

SCOPING COMMENTS

On following pages are the comments and suggestions offered by persons attending the several public and staff scoping sessions conducted in November and December and through letters sent to the park during that time. The comments are presented as they were recorded at the scoping meetings, but have been reorganized into several categories. Comments from the letters are summarized. In many cases the comments illustrate disparate views on various issues. The planning team will review and consider all of the comments in the development of alternative plans.

► Adjacent Lands

Acquire additional lands with priority on adding riparian lands

Acquire any adjacent lands that are available

Add adjacent BLM lands to the north-protect core of park

Address issues outside boundary—impacts of development—staff must be aware and involved; light pollution, air quality; water

Avoid mining claims in future acquisitions—gravel, etc.

Analyze for mining issues prior to purchase

Boundary adjustment benefits

1. increase capacity to meet visitor use
2. improve ecosystem management

Consider scenic/agricultural easements as at Pt. Reyes to protect land outside the park

Enlarge the boundary to the north through acquisitions or easements

Expand boundaries

Impacts on adjacent property owners if NPS acquires private and public tracts

NPS should acquire nearby BLM land for park

NPS should seek a major boundary addition

Parking and roadside camping have impacts on local property owners—County & CALTRANS perspective

Take strong position with Soledad on land uses to protect park gateway



► Cultural Resources Management

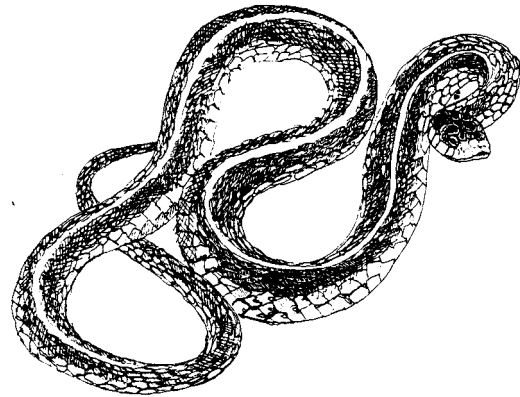
Consider best preservation of structure in selecting uses for historic structures

Pay more attention to cultural resources, e.g. CCC works such as stable & gas house

More emphasis on pioneer history

Remove resources office from HQ's area. Design is incompatible with CCC structures

Retain existing historic structures in park



► Interpretation & Education

25 years from now, people may come to see chaparral as much as pinnacles

Continue walks and education outreach

Encourage school field trips—requires road improvement

Expand visitor center offerings and space

General Management Plan should provide for interpretation

Get the word out about park to increase level of understanding re park plans and programs, e.g. why we fence, shoot pigs, leave trees in stream, etc.

Have public meetings to discuss park approaches. Also use web site. Need to reach kids. Start locally.

Interpretation should use both traditional techniques (e.g. campfire programs) and high-tech methods

Keep botanist on staff and have him/her interact with public

Let people know about tarantulas

Outreach offsite to schools & elderly to inform re: values & opportunities of Pinnacles NM

Outreach would include info on wilderness philosophy and how to prepare for visit. Also general park info

Provide specialist "on duty" roster so public can direct questions

The plan should consider opportunities for environmental education

Update materials in visitor center to educate people on sensitive species

Use historic buildings—living history. CCC-era buildings

Visitor center needs more information

SCOPING COMMENTS

► Management Considerations

Address employee parking
Backcountry camping will result in need for more staff
Climbers are willing to help preserve park
Could encourage local people to work in park
Could locate residences in Soledad, main visitor center, then have contact station in meadow
Don't allow dogs in the park
Eliminate temporary housing in park and replace with durable appropriate construction, using wood and stone
Establish more "Friends" organizations
Establish volunteer program for MAPS project
Get admin. facilities out of the center of the park
Give climbers opportunities to help with climber related projects
Higher fees should be charged to pay park costs
Housing has priority for limited space
Maybe park could locate an offsite area for housing
Minimize infrastructure to keep close to current levels
Move administrative buildings to Hollister
Need for park housing on west side
Need permanent and seasonal housing
NPS should use volunteer and other low cost labor for trail development
Provide adequate employee housing in park
Staff needs relationship to the park to really interpret it, i.e. must live in it
The park should encourage student research projects
Underlying problem is expense of housing. Seasonal employees cannot find housing at all. Must address this issue.
Use climbing community more to help with the maintenance of access trails
Use preventive maintenance

► Natural Resources Management

Bring back the condors
Consider reintroduction of extirpated native species
Continue raptor monitoring
Continue to protect tarantulas
Eliminate alien species that displace native vegetation
Eliminate pigs from park even if that means killing them
Encourage MAPS program in park for bird monitoring
Eradicate/control noxious weeds
Establish use zones based on terrain/resource
Fire should be used to maintain health of plant communities
Get rid of the pigs
Have aggressive burn policy for park
Impacts from increased visitor numbers
Keep backcountry as is—add new visitors to front country

Keep viewshed in mind when you develop
Locate developments and services near boundaries rather than in center of park
Move out of Bear Gulch; sensitive area
Move out of riparian areas—they are not sacrifice areas.
No non-native red fox allowed in park (bird issue)
NPS should actively pursue air quality protection
NPS should provide public education on pig control and use of prescribed fire
Park development is currently in riparian areas—parking lots, roads, etc.
Park should aggressively combat non-native plants
Park should recognize potential use of the monument by condors reintroduced on central coast
Pig fences are unnecessary
Plan should be based on the park's carrying capacity
Protect raptors by keeping climbers out of nesting areas in spring
Protect the Townsend Big-Eared Bat
Protection of wilderness values and wildlife habitat should be first priority of plan
Remove facilities that do not specifically benefit environment or visitor use
Remove non-native species, e.g. star-thistle
Riparian areas need to be reserved and development not expanded into those areas
Take advantage of the flood event and move infrastructure out of the flood plain to benefit the resource and accommodate current and future visitation
Trails should be better marked to keep users from making braided routes
Wildlife protection—high priority
Wildlife protection—supports visitor experience



SCOPING COMMENTS

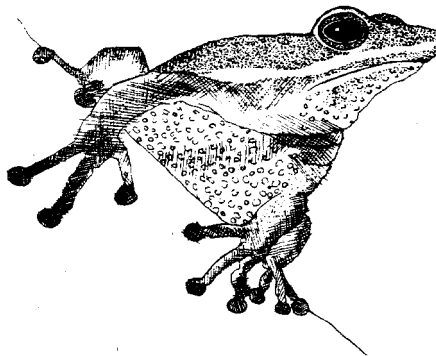
► Visitor Access

A shuttle system with large offsite parking lot may be a solution
Accommodate bikes on roadways—more practical with boundary expansion
Address carrying capacity—consider reservation system or shuttle from Soledad
Address handicapped access & elderly
Address movement of visitors into and through the park—parking is a major issue
Avoid reservation system
Cave access as much as possible
Caves should not be closed—visitors should take responsibility for own safety
Climbers need access to cliffs under CMP
Close internal roads to all but bikes, shuttles, handicapped—provide bike racks at trailheads
Consider climber gear when selecting new shuttle vehicles
Consider use of a shuttle system
Develop alternatives to accommodate short-term visitors (parking)
Don't improve roads to accommodate RV use
Don't limit use that does not damage resources
Establish shuttle system in lieu of large parking lots
Improve west entrance road to 2 full lanes—dangerous now—wine tasters are dangerous.
Push for Fed-state joint venture on road.
Improve parking and auto access
Keep park open for moonlight hiking
Need for trailhead parking to access individual trails—small lots—disperse impact
Park cars outside the park and shuttle in
Parking facilities should be expanded; necessary for public access
Select east and west shuttle lots
The park should be open 24 hours/day
Upgrade road system in preparation for next El Nino
Youth should have access to the park at a reasonable price

► Visitor Experience

Address issue of carrying capacity and visitor numbers
Address the variety of visitors—rock climbers to parents with strollers to elderly
Campfire programs in past drew community people
Camping offers visitors important park experiences and should be provided
Consider stock use in park/wilderness
Continue use of wooden signs

Don't change east side trails or developed areas. Environment can't handle more
If caving is part of visitor experience, we need to make better use of Balcony Caves
Important to have short walks for families
Keep "quaint" roads
Keep climber access/keep low key
Keep park as it is—no changes
Keep park low key compared to Yosemite type situation
Keep trail system as is
Keep wilderness trails as wilderness trails
Minimize signage on trails and climbing routes
More trails are needed to better distribute visitor use
New trails should be narrow footpaths with few structures for quality experience and minimum impact
No bikes on trails
No horses on trails
No horses—too much conflict on trails
Open parts of backcountry to overnight use—very limited & in designated areas
Park should allow backpack wilderness camping
Park should provide opportunities for mountain biking, including cross-park route
Pinnacles offers rare opportunity for multi-pitch climb; proximity is major factor
Promote amateur astronomy visitation and night sky opportunities
Protect night sky
The green fencing used in erosion control is visually offensive; the same is true of the gates to the caves
The park offers quality visitor experience opportunities at dusk, dawn, and night
Vary visitor experience in terms of time spent in park, 2-6 hours
Vision involves a closer relationship between visitor enjoyment and what naturally occurs in park. This involves some front country development. Can't go back 100 years.
Visitor experience considered good now
Visual quality should be maintained in any construction projects

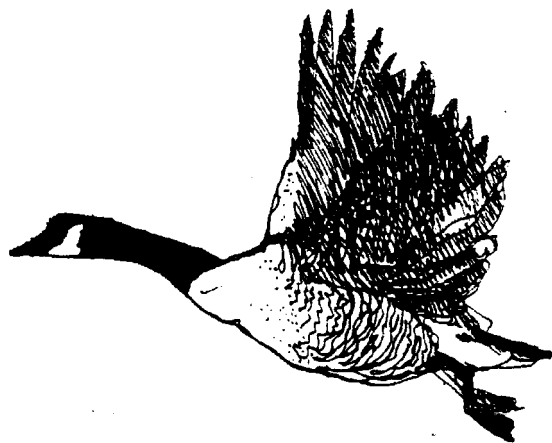


SCOPING COMMENTS

► Visitor Service & Facilities

A camp area is needed on the west side
A reasonably priced campground is needed on the east side
Address operating hours and be open in the evenings and in the morning earlier than 7:30
Adequate law enforcement & emergency services
Backcountry camping—walk-in
 1. balance with riparian sensitivity
Basic trail information at trailhead, i.e. indicate availability of water and restrooms
Better delineate north wilderness trail
Build south wilderness trail loop—build to last—expand boundary if needed for sound alignment
Camping on west side should be provided outside the park boundary
Chalone area is underused and should accommodate more visitors
Climber access routes—consider formalizing trails to avoid braiding
Consider potential of back country camping
 1. consider trailhead parking lot
Continue climbing policies as they are
Could provide programs in evening and still have gates closed- or periodical “open” nights
Don’t replace west side campground in flood plain
Either downgrade west side or upgrade to visitor facility equal to east side. Could meet population needs of Salinas Valley. Provide more access to peaks through new trails. Reason Pinnacles was set aside.
Encourage a west side campground (public/private) in Soledad or on Metz Road.
Establish owl walks on regular basis; Don’t use tape recordings—adverse impact on birds
Evaluate possibility of adding trails, i.e. follow West entrance boundary fence and then follow ridge line to high peaks
Expand camping facilities and opportunities (consider cost of camping)
Expand open park hours to accommodate night use
Have youth camping by special designation
Include camping on west side
Interested in more routes bolted
More interpretive hikes
Move visitor center to park boundary to explain options early in visit
Need more camping
No appropriate area physically for campground
No backcountry camping
No concessionaire
No need for backcountry camping
No need to provide developed camping; use existing private campground

NPS should provide and run low-cost campgrounds
On permit basis, allow use of tower on North Chalone Peak
Park should be open 24 hours
Park structures should be adequate to accommodate use and should incorporate CCC esthetics
Provide camping—No RV—14 day maximum stay
Provide comfort station at reservoir and other areas of high use to reduce resource impacts
Provide night experience to kids—increase needed in ranger staff



Provide overflow camp and picnic areas for busy periods
Provide trail connection from Pinnacles CG to main park trail system
Readdress Chalone area use
Reestablish walk-in access from Pinnacles campground
Relocate buildings on west per approved plan. On the west side pinnacles can be seen—photo opportunities. Tie trails into development. Short trails to viewpoints would meet needs of parents with kids, and other less ambulatory
Replace fixed anchors-safety (retro-bolting)
Retain current camp on east side
Should provide electricity on west side
Single retro-bolting w/o permit
Stage litters at central climbing areas
Tackle issue of park operating hours—address vandalism through education and outreach
Use tower on peak for camping
Walk-in tent campgrounds near both entrances
West side facilities need to be improved but must decide on appropriate location
West side needs entrance station and contact station. Implement approved plan.
Westside campground needed close to the park

SCOPING COMMENTS

► Miscellaneous Observations and Admonitions

Access trails for rock climbing are good

Address carrying capacity

Address carrying capacity and use as a planning guide

Address traffic increase on highways including bicycles and motorcycles

As visitation to wineries in area grows, more visitors to Pinnacles as well

Be sure climbing is recognized as a primary use

Carrying capacity driven by visitor experience (important)

Consider reservations

1. Allow % drop-in
2. Climbers cooperate with raptor breeding closures

Continue public information efforts

Criteria for facility location:

1. Evaluate natural environment
2. Find where people want to go and do
3. Determine what to offer to visitors
4. Locate developed facilities to serve 1-3

Do not reconsider a road through the park

Don't restrict visitor use based on minor air quality impacts

Drive time will become shorter & park visits may become shorter

Establish demographics of recreation use for planning purposes

Factor cost and risk assessment into evaluation of alternatives

Generally involve user in policy decisions

Get maps changed so they don't show through road from west to east

If boundary does not expand, park will need to be very clever to get back to previous visitor level

Include a climbing ranger in developing regulations and plans

Keep climbers in decision loop for regulations; continue with volunteer projects

Keep good relations with Pinnacles Campground

Keep park personnel living in park

Landowners around park not interested in developing camping—camping in park is important and would draw more visitors

Legitimate after hours use may discourage unlawful use

Litter and other trash on roadside

May not need to live in the park to have love for it

Need to address park access in the spring on both sides

No "for-profit" concessionaire

No concessioners

Park Day helps to involve the community

Park is well protected. And this should continue

Picnic areas and trailheads may not need to be co-located

Previous internal shuttle focused people on Bear Gulch and areas nearby—with discontinuation there was more dispersal. But dispersal means that fewer people will have contact with a ranger.

Raise the price of park entrance pass/lower daily pass price

Recognize Pinnacles NM as one of the original National Parks with a high quality experience

Re-examine cave management policies

Response to shortened drive may depend on facilities provided

School programs work well

Visitors must come to Bear Gulch on weekdays because fees are not collected at entrance

With shuttle system, there would be a need to determine capacity to ensure a quality experience

