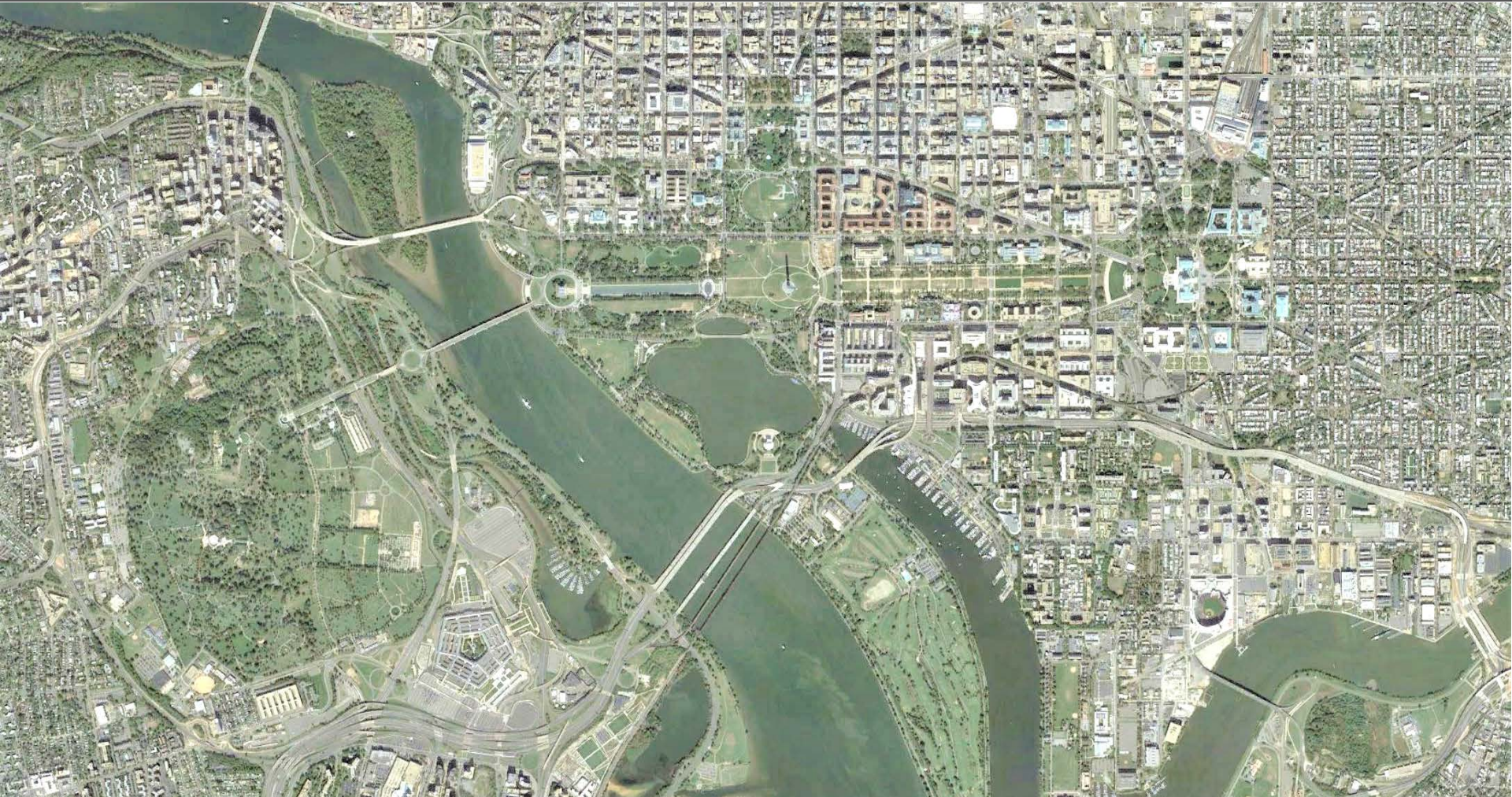


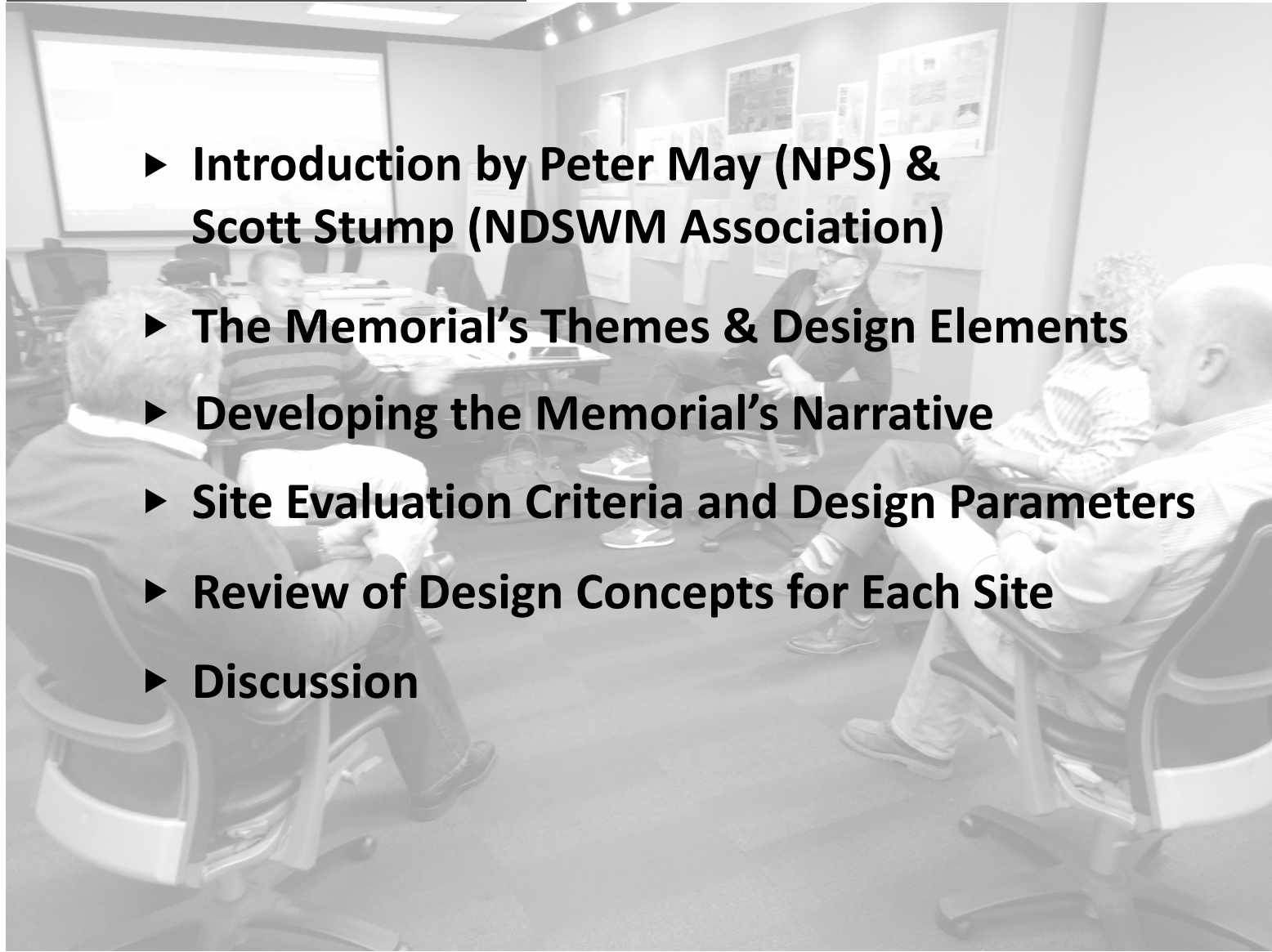
National Desert Storm and Desert Shield Memorial

Site Selection Phase – Site Design Studies Review with the National Capital Planning Commission



April 5, 2018

Table of Contents

- 
- ▶ **Introduction by Peter May (NPS) & Scott Stump (NDSWM Association)**
 - ▶ **The Memorial's Themes & Design Elements**
 - ▶ **Developing the Memorial's Narrative**
 - ▶ **Site Evaluation Criteria and Design Parameters**
 - ▶ **Review of Design Concepts for Each Site**
 - ▶ **Discussion**

Introduction

The National Desert Storm War Memorial Association (Association), the sponsoring organization for the National Desert Storm and Desert Shield Memorial, has developed a range of design concepts for three potential sites for the Memorial. NCPC reviewed the Constitution Avenue Terminus Area, E Street Corridor, and Constitution Avenue Belvedere sites for the Memorial at its December 7, 2017 meeting. The commissioners supported the advancement of the three sites for further study and requested the Memorial team develop one or more alternative design concepts for the three sites. The Commission also requested information about the physical relationship of the memorial to the surrounding context, including access and preservation of historic landscapes, and provide information about program needs at each site.

To comply with the National Environmental Policy Act (NEPA), a design public scoping period is scheduled to commence on March 12, 2017 and close on April 12, 2017. A public meeting is tentatively scheduled for March 27, 2018 at 6:00 p.m. at 2020 K Street NW, Washington, DC. At the meeting, the Association will present an overview of the NEPA process and the design concepts and offer an open house-style review of materials.

Background

The attached materials build on the site selection study and review process started in 2015. The Association prepared a broad site selection study in 2015-2016 and conducted a thorough site selection review process in 2017 in cooperation with the NPS and staff from NCPC, CFA, and the DC State Historic Preservation Office (SHPO). After a review of 18 sites, two sites were selected as the most appropriate for further analysis and to explore potential concepts for how the site could accommodate a memorial. The Association presented the two finalist sites, Memorial Circle Area and the Constitution Avenue Terminus Area (identified as Sites 1 and 6, respectively in the *Memorials and Museums Master Plan*) to NCPC on July 13, 2017 and CFA on July 20, 2017.

Introduction

NCPC found that the Memorial Circle Area site is “currently challenged by pedestrian – vehicular conflicts” and noted that the site’s “adjacent road network may detract from a contemplative and safe environment necessary for a successful memorial.” CFA expressed concern about the suitability of the Memorial Circle Area site, noting that the site is “layered with many other commemorative associations” and “found that a site less laden with established commemorative meaning would provide a better setting for the Desert Storm and Desert Shield Memorial.” In addition, comments received during the site selection public scoping period noted that locating the Memorial at the Memorial Circle site would be disconnected and isolated from the other commemorative works both on the Washington and Arlington side of the Potomac River. Based on this combined feedback, the Association found that the Memorial Circle Area site poses difficult challenges and removed the site from further consideration.

At the July 20, 2017 CFA meeting, CFA endorsed the further exploration of the Constitution Avenue Terminus Area site and E Street Corridor site, (identified as Site 11 in the *Memorials and Museums Master Plan*), as well as recommended that the Constitution Avenue Belvedere site be included in the next phase of site selection. NCPC reviewed the Constitution Avenue Terminus Area, E Street Corridor, and Constitution Avenue Belvedere sites for the Memorial. The commissioners supported the advancement of the three sites for further study and requested the Memorial team develop one or more alternative design concepts for the three sites. This submittal has been prepared in response to that direction from NCPC.

The Memorial's Themes

The Memorial's Themes:

1. **The Historic Pivot:** the restoration of the bond between the American people and the military, as illustrated in the National Victory Parade on Constitution Avenue on June 8, 1991. There were 8,000 military participants and over 200,000 spectators
2. **The 34-nation coalition** & international diplomacy to liberate the country of Kuwait
3. **Commemoration** of the conflict and the Americans who served

The Memorial's Design Elements

Potential Memorial Design Elements:

1. Walls: to provide opportunities for enclosure, carved inscriptions, bas relief, stars, laser imaging, etc.
2. Statuary / sculptures: to convey the Memorial's narrative
3. Basic, maintainable landscaping materials: such as trees & grass
4. Ramps, walks, processional
5. A tall vertical element: to terminate an important axis

Developing the Narrative: The Historical Context



The Vietnam War Memorial

- Desert Storm is an historical bookend to the Vietnam Era
- The Vietnam War & Operation Desert Storm are contrasting conflicts:
 - Vietnam War was a long divisive conflict with an ambiguous outcome
 - Operation Desert Storm had a clear mission with a rapid & decisive victory
- Historic events could inform the Memorial's narrative & design: descending vs. ascending, angular vs. curved

Developing the Narrative: Fine Tuning The Memorial's Message



The American military as heroes and liberators



Kuwaiti liberation celebrations



MOPP: Mission Oriented Protective Posture; an ever-present concern

Developing the Narrative: Potential Sources of Inspiration



The Left Hook Map



Wind Sculptures



Joann Grant's 3rd grade class quilt of 1991



Coalition country flags

Updated Site Evaluation Criteria

The addition of this memorial to a contemplated site should:

- Establish a prominent place of honor
- Compliment the existing attributes of the site
- Maintain the civic quality of open space
- Respect the established context and should not preclude the addition of future memorials
- Allow for future connections
- Enable an appropriately sized and scaled design
- Create an appropriate visitor experience and include a sacred space for reflection

Design Parameters: Primary & Secondary Considerations

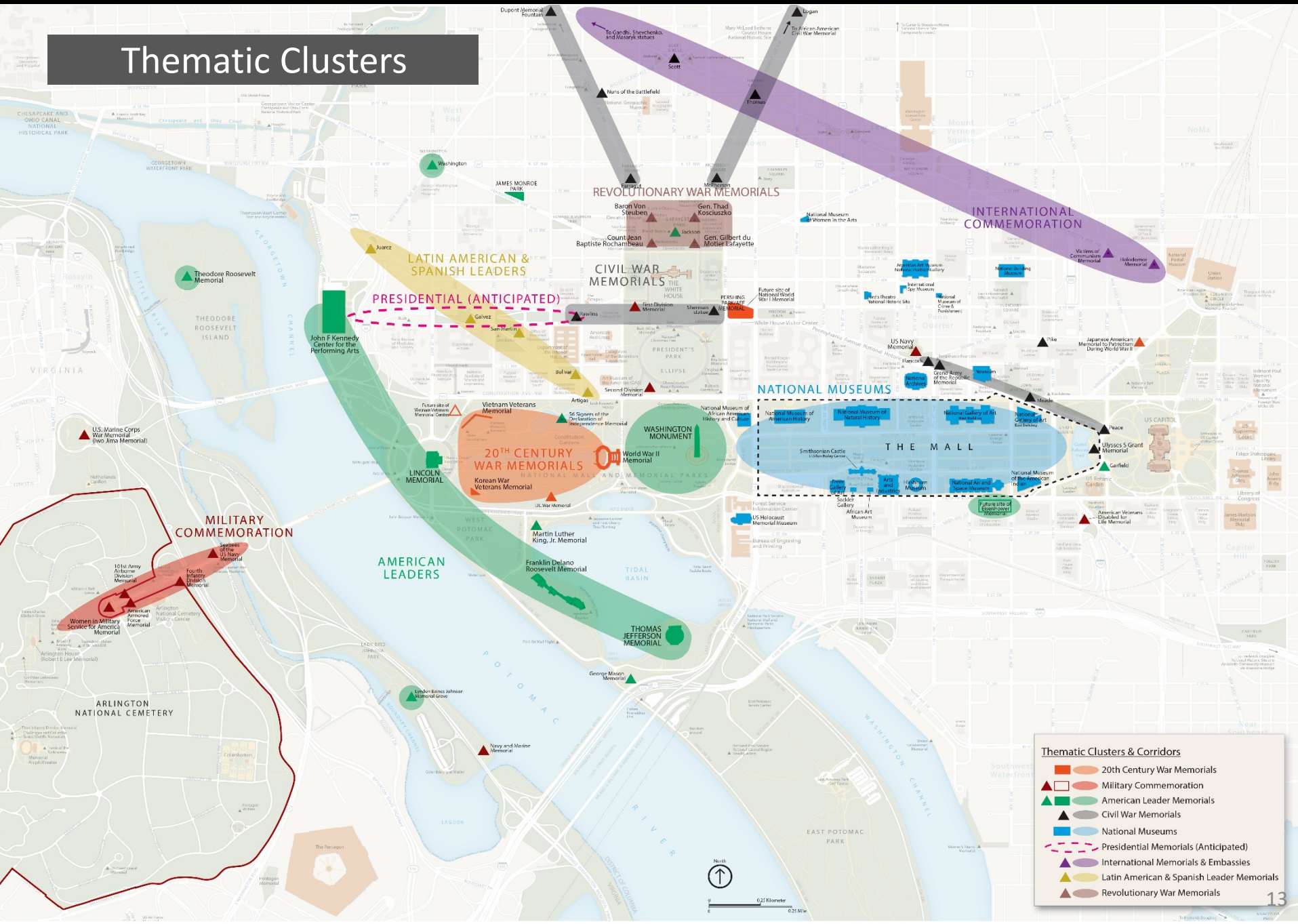
The design of the memorial should:

- Be compact and appropriate in size, related to the scale of the site
- Be more than a stand-alone object, it should provide an appropriate place of reflection
- Be integrated within, and be complementary to, the existing landscape
- Maintain existing trees, particularly designed rows of trees, to the extent practicable
- Utilize existing circulation resources (sidewalks, pathways and parking) to the extent practicable

Concept Design Review



Thematic Clusters



Thematic Clusters & Corridors

- 20th Century War Memorials
- Military Commemoration
- American Leader Memorials
- Civil War Memorials
- National Museums
- Presidential Memorials (Anticipated)
- International Memorials & Embassies
- Latin American & Spanish Leader Memorials
- Revolutionary War Memorials

Concept Design Review

► The Belvedere

SITE CHARACTER: The Civic Landscape Site

A visible, prominent site on the Potomac River

Site Characteristics:

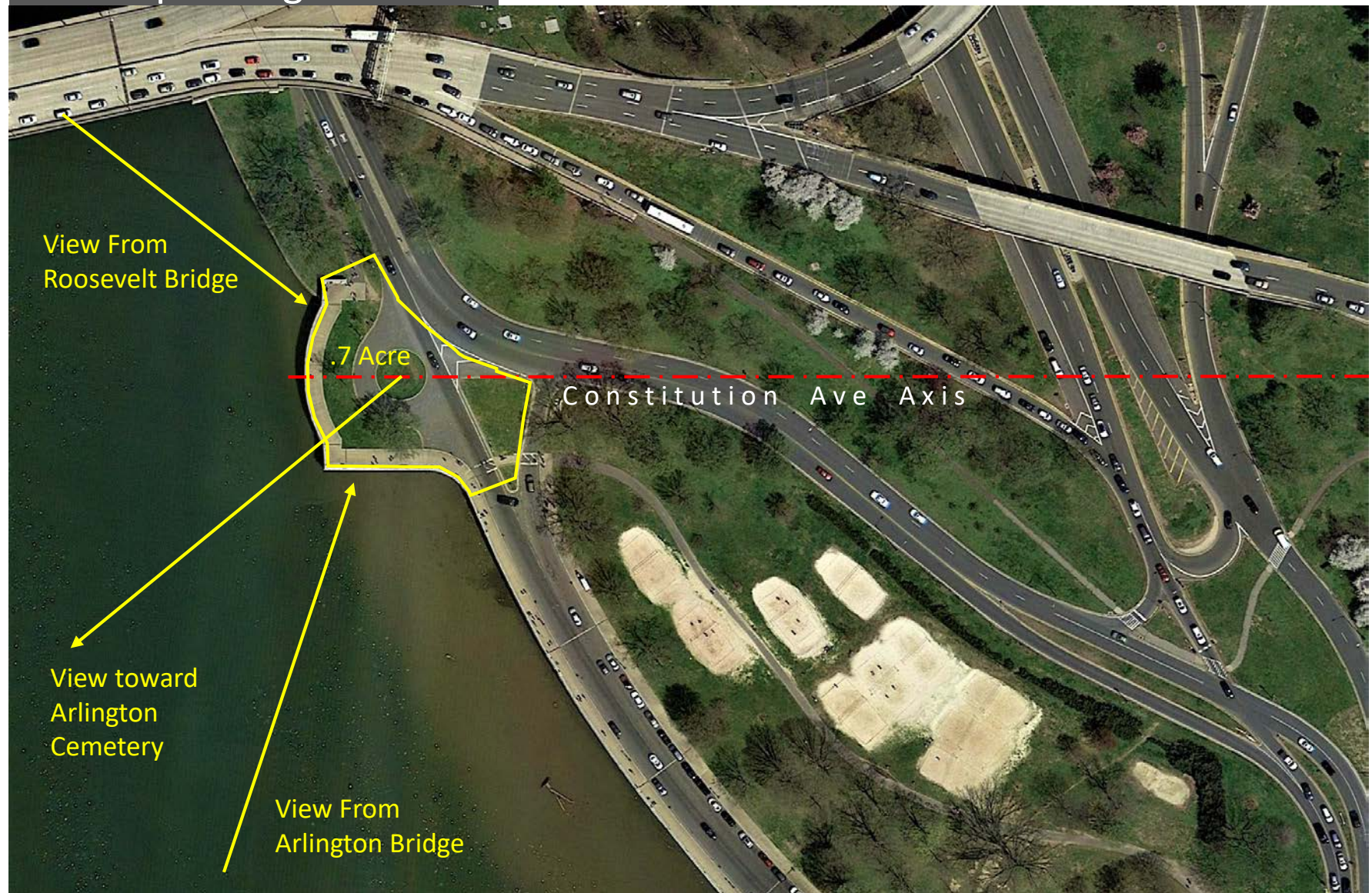
- The site is the historic terminus to Constitution Avenue
- Visible to & from multiple directions
- Adjacent to the Potomac: boundlessness & floodplain
- Parallel parking on Potomac Parkway
- ½ mile walk to the National Mall & the Lincoln Memorial
- Adjacent vehicular circulation
- Multi-use trail passes through the site

Concept Design Review

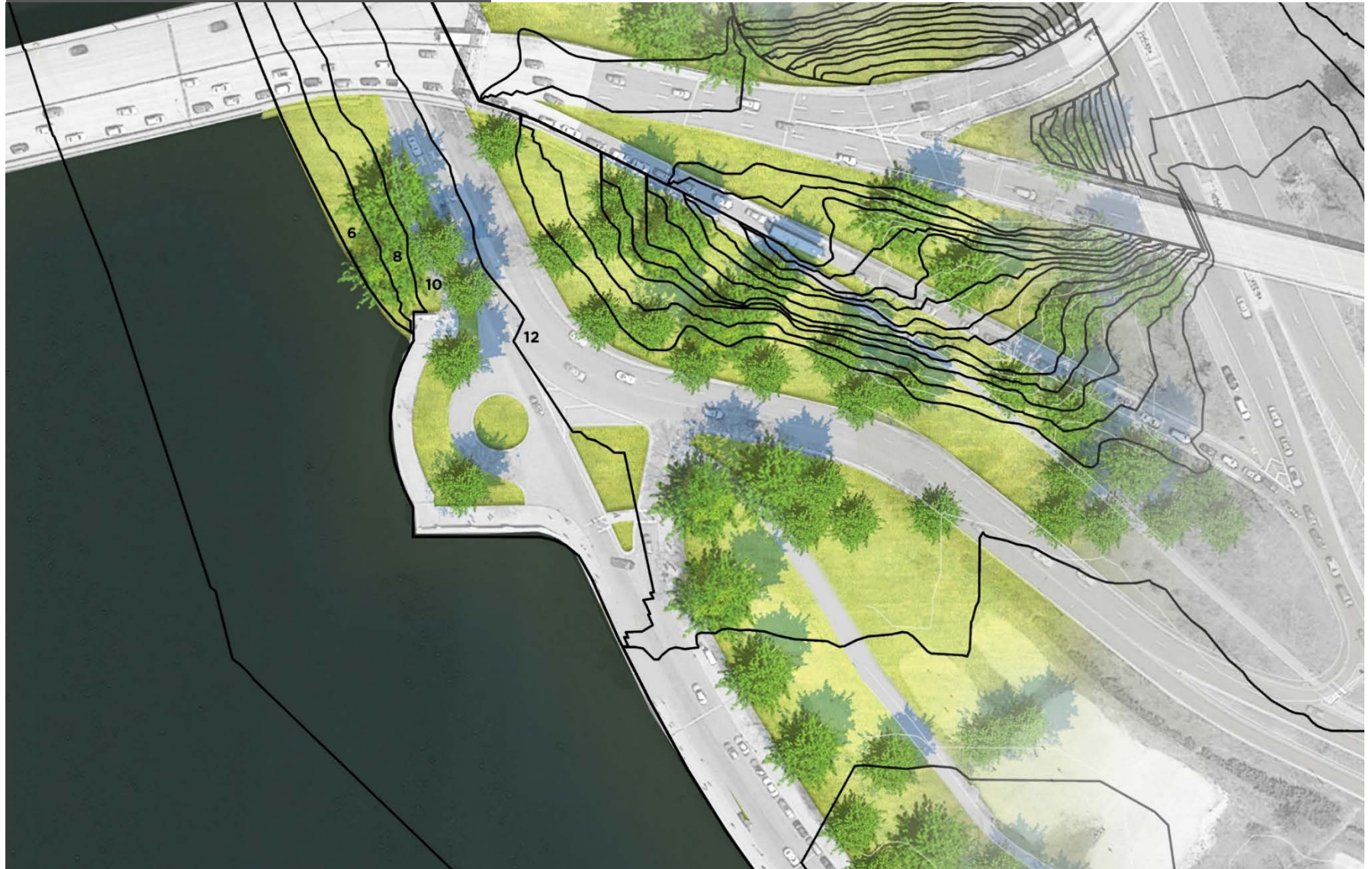


► The Belvedere – Site Aerial Photo

Concept Design Review



Concept Design Review



Concept Design Review



Concept Design Review



The view toward the Washington Monument



The view toward the Roosevelt Bridge

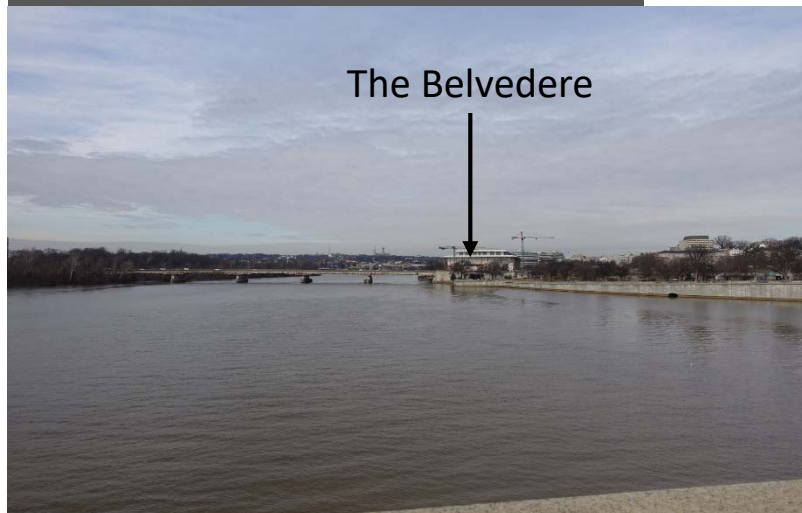


The view toward the Roosevelt Bridge



The view from the Roosevelt Bridge

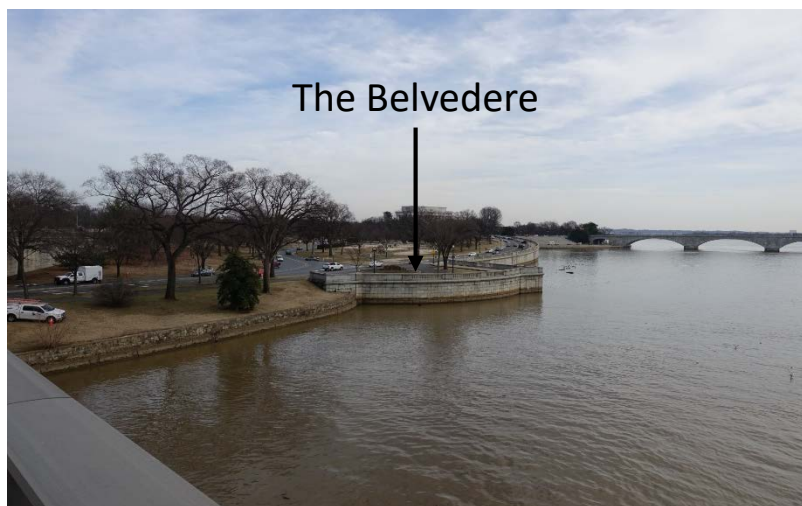
Concept Design Review



The view from Memorial Bridge



The view from the Mt. Vernon Trail



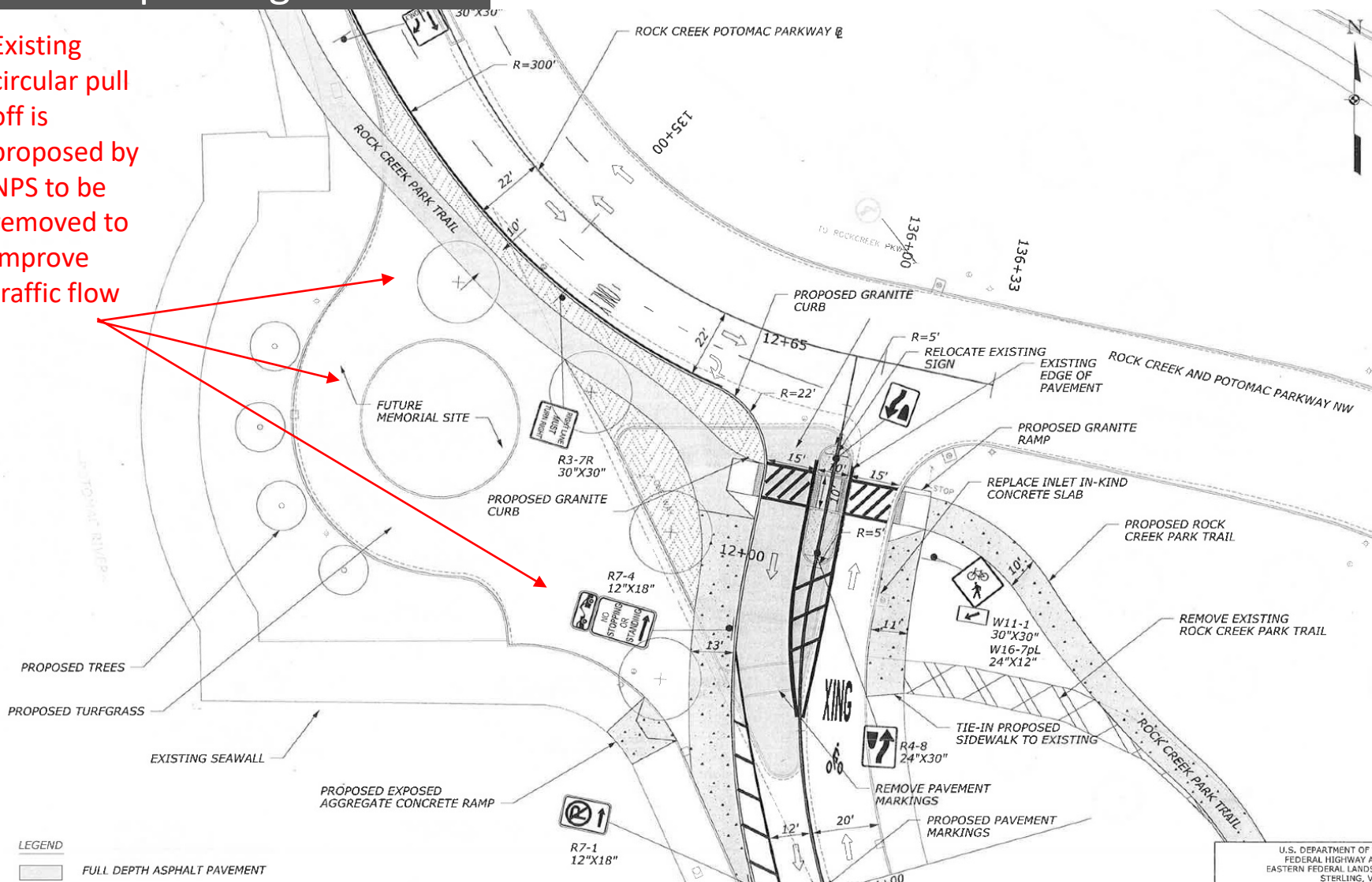
The view from Memorial Bridge



The view from 23rd & Constitution

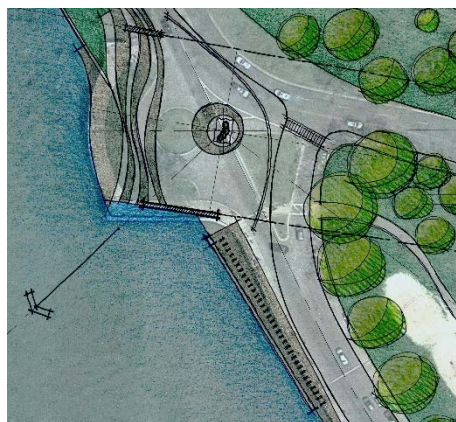
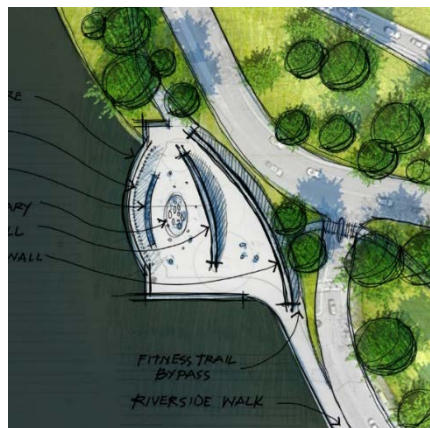
Concept Design Review

Existing circular pull off is proposed by NPS to be removed to improve traffic flow



Concept Design Review

A few of the many design concepts that were explored for this site:

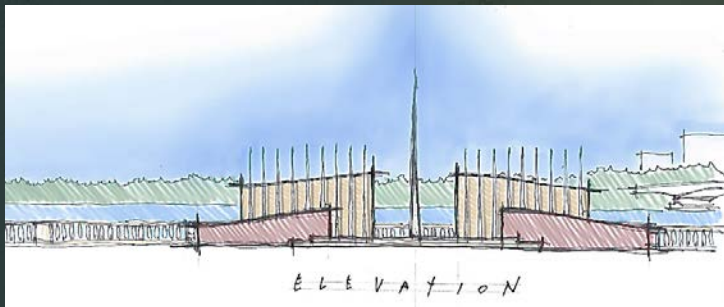


Concept Design Review

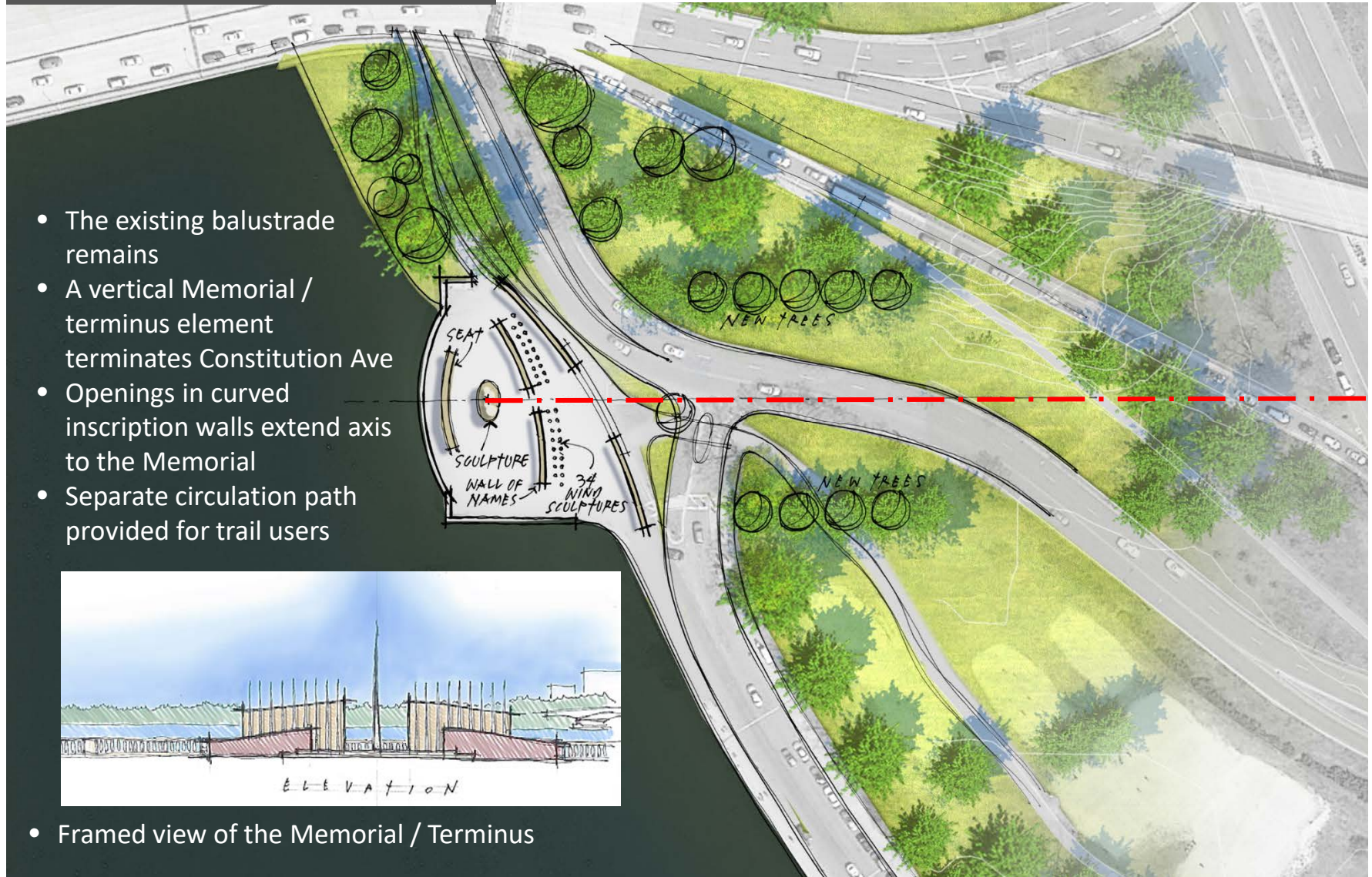


Concept Design Review

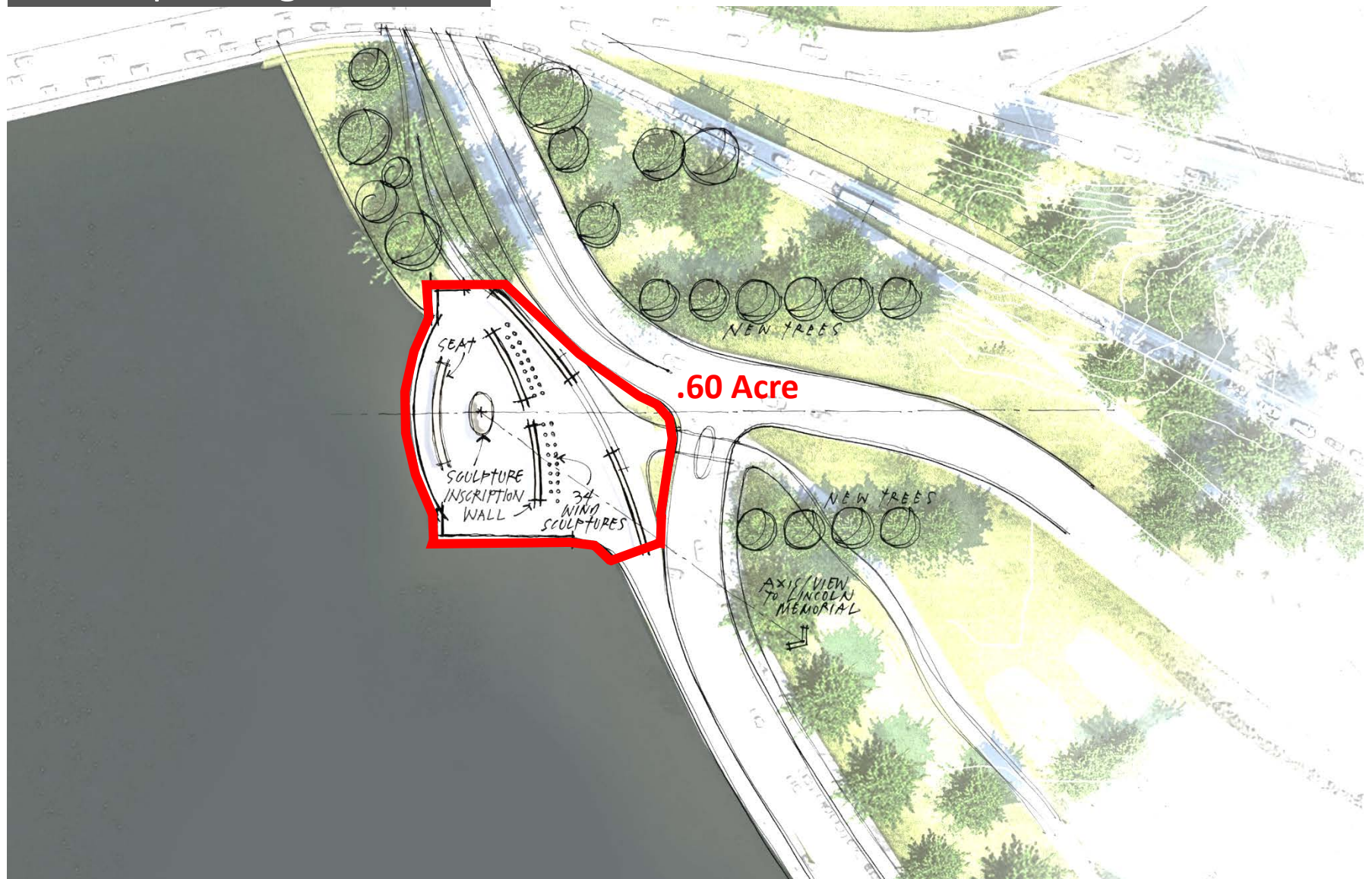
- The existing balustrade remains
- A vertical Memorial / terminus element terminates Constitution Ave
- Openings in curved inscription walls extend axis to the Memorial
- Separate circulation path provided for trail users



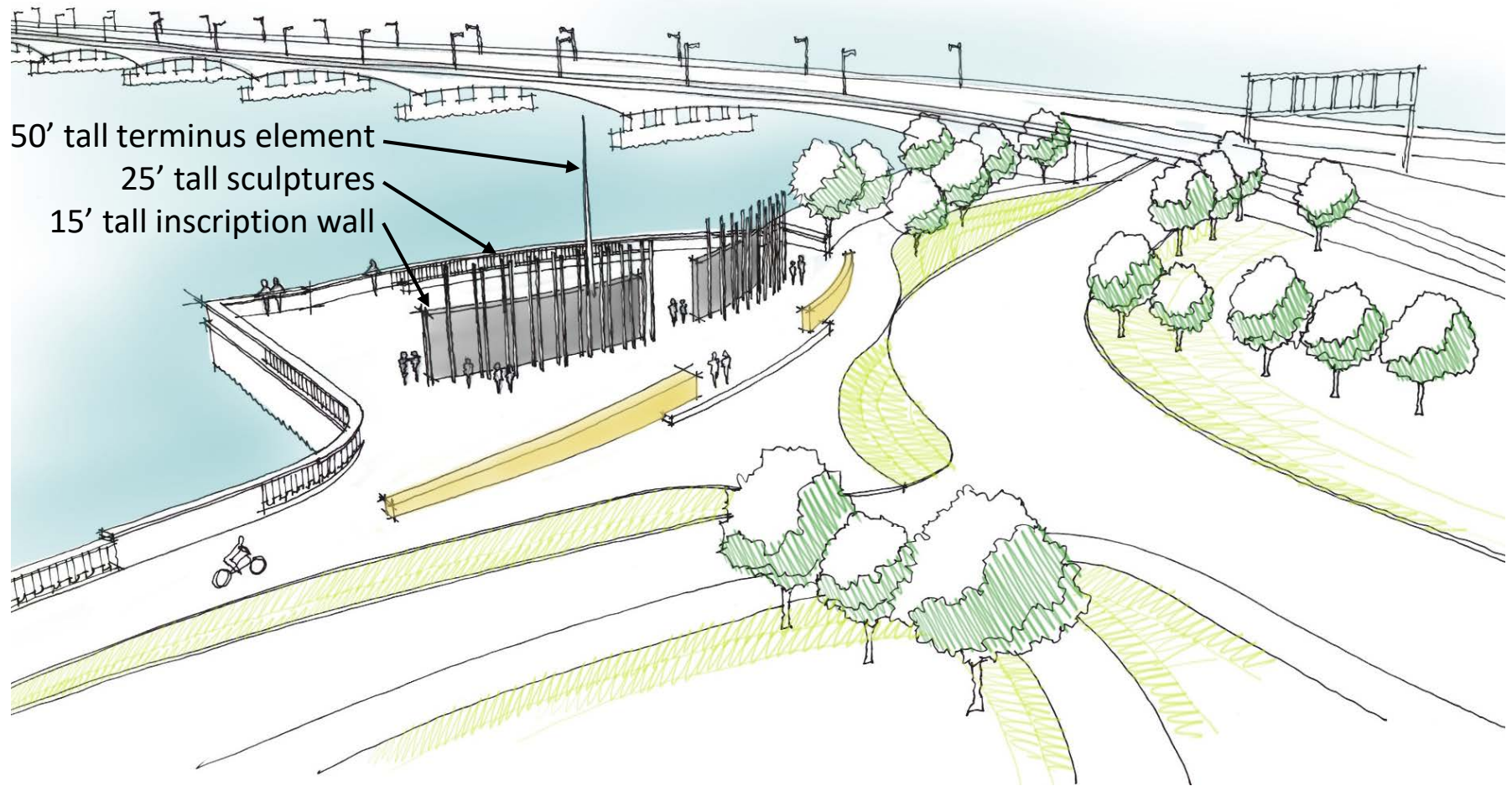
- Framed view of the Memorial / Terminus



Concept Design Review



Concept Design Review



Concept Design Review

► E Street

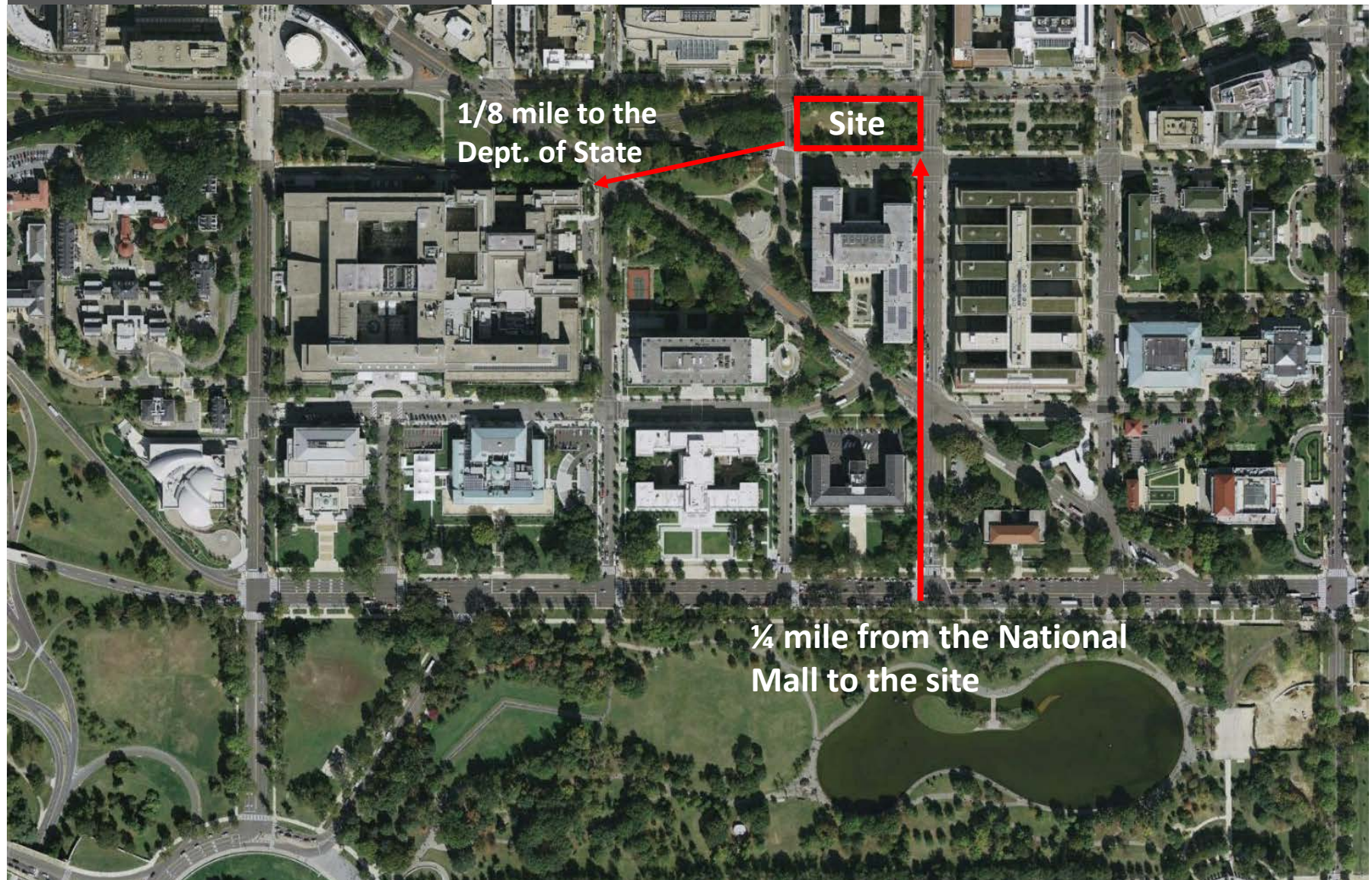
SITE CHARACTER: The Urban Landscape Site

An Urban Green Space

Site Characteristics:

- Urban character, zoned for mixed used (MU)
- Site #11 in the Museums & Memorials Master Plan
- Bounded by 4 streets & multistory buildings
- Existing park occupies east portion of site
- Area II location level of prominence
- ¼ mile to the National Mall via 19th Street
- Adjacent to Rawlins Park, with a shared center axis
- Within anticipated Presidential Corridor
- On-street parking

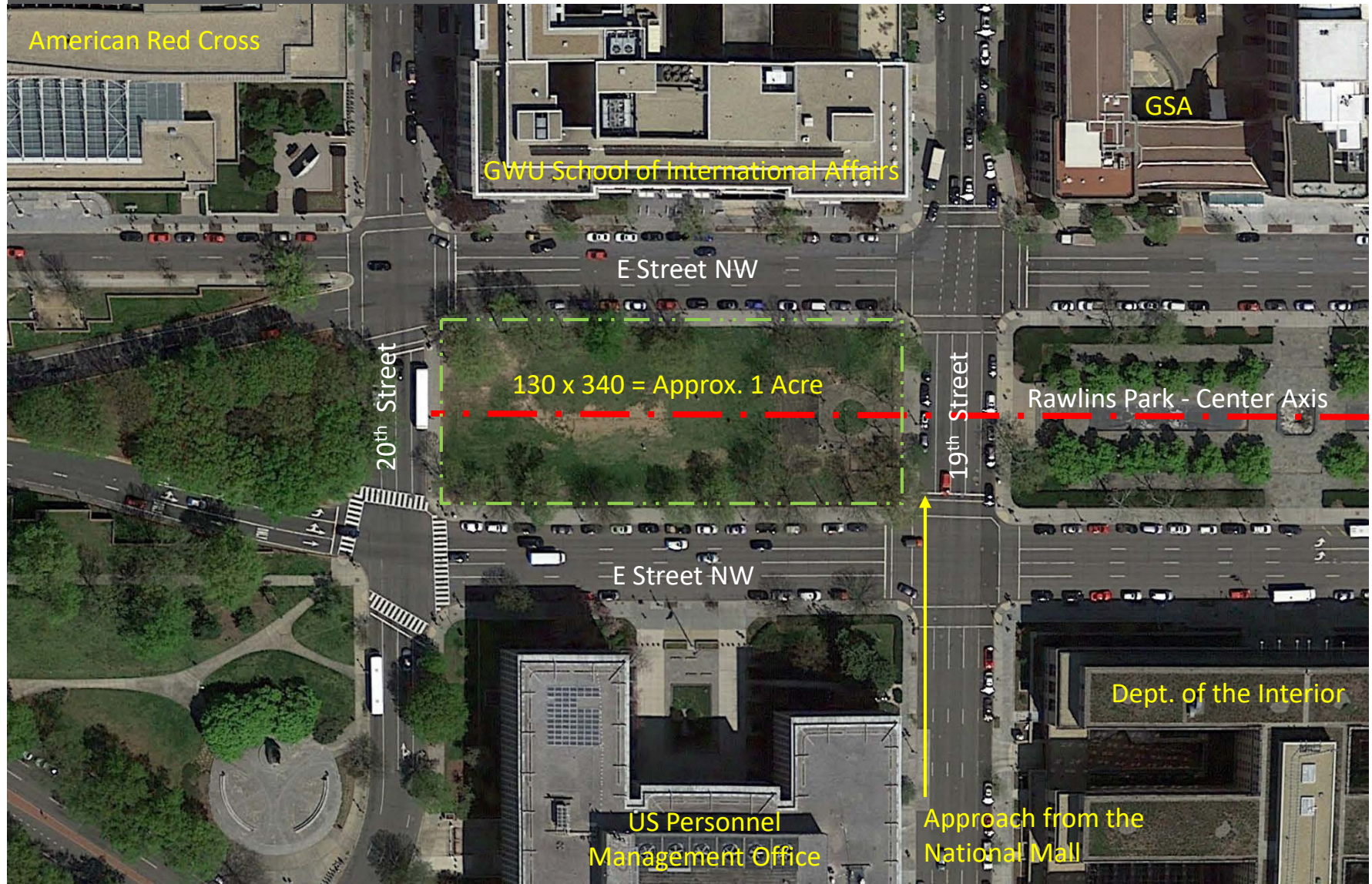
Concept Design Review



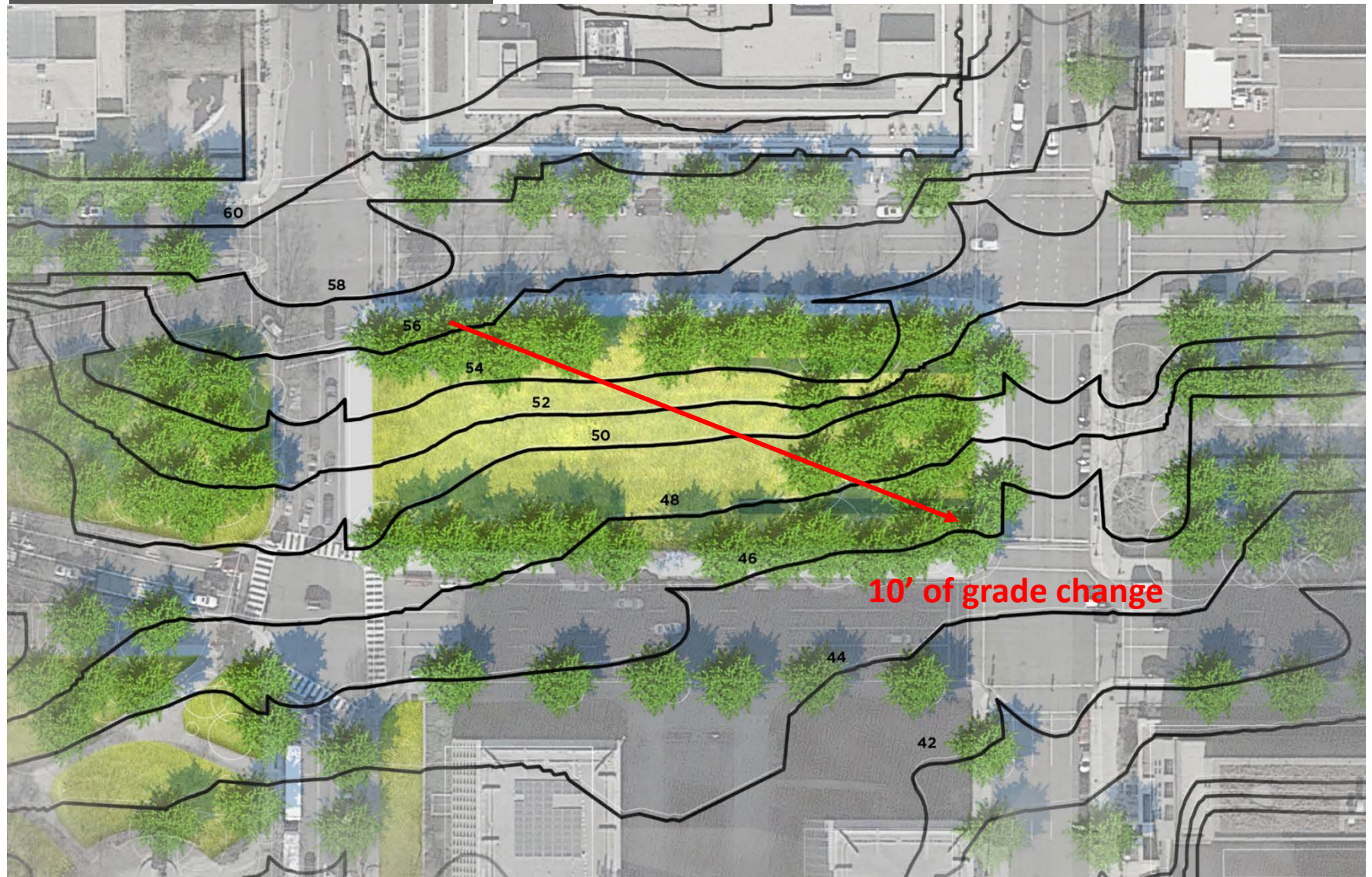
Concept Design Review



Concept Design Review



Concept Design Review



Concept Design Review



► **E Street** – View Looking East Across Site

Concept Design Review



Concept Design Review



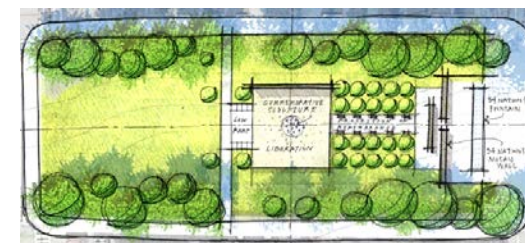
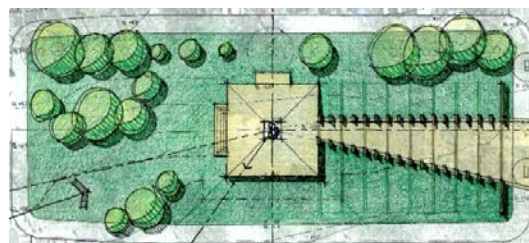
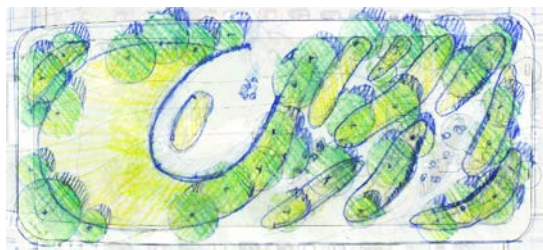
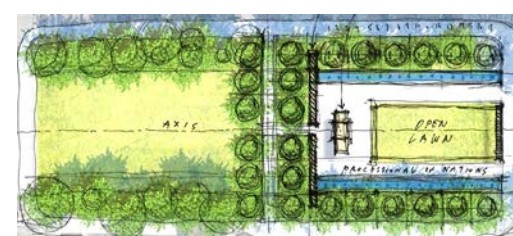
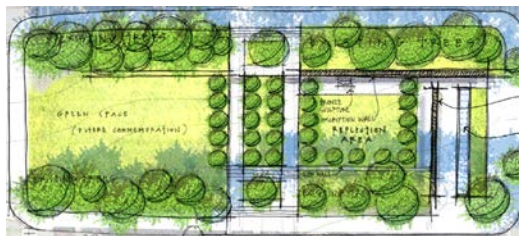
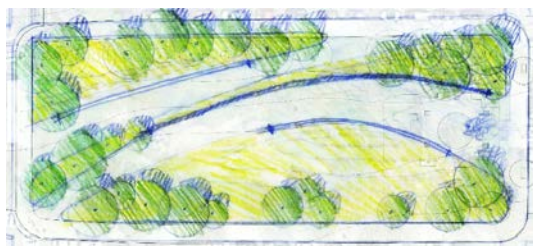
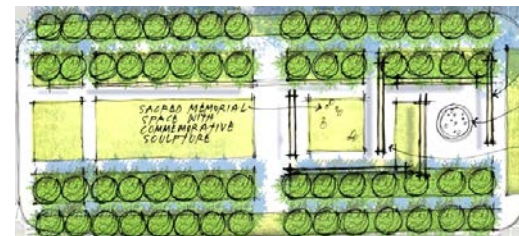
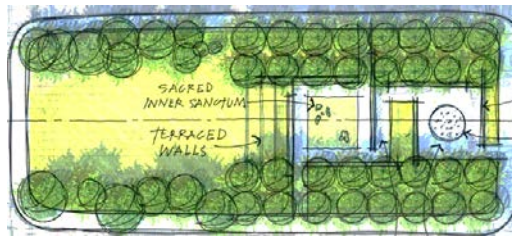
► **E Street** – View Looking West From Rawlins Park

Concept Design Review

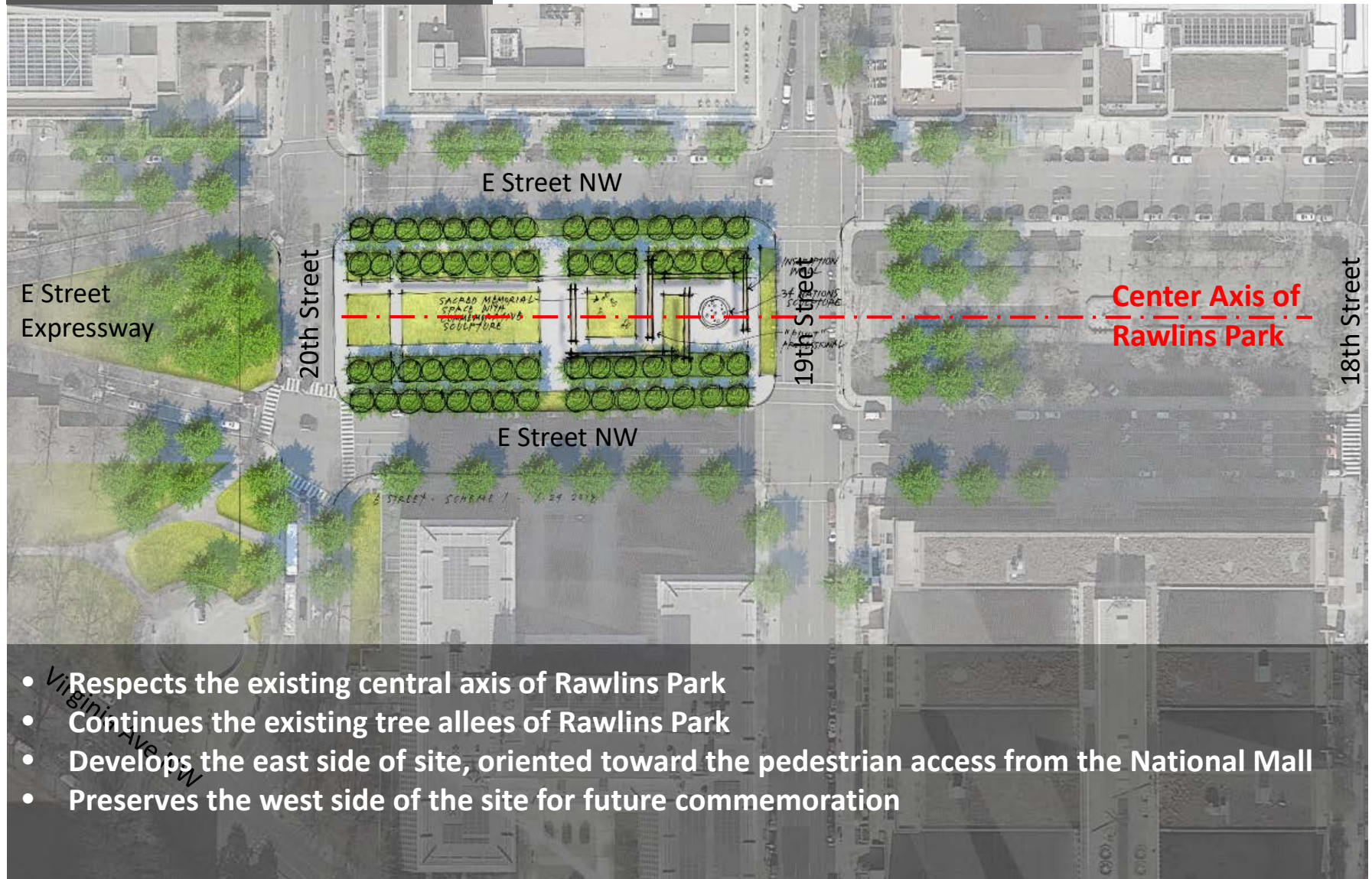


Concept Design Review

A few of the many design concepts that were explored for this site:

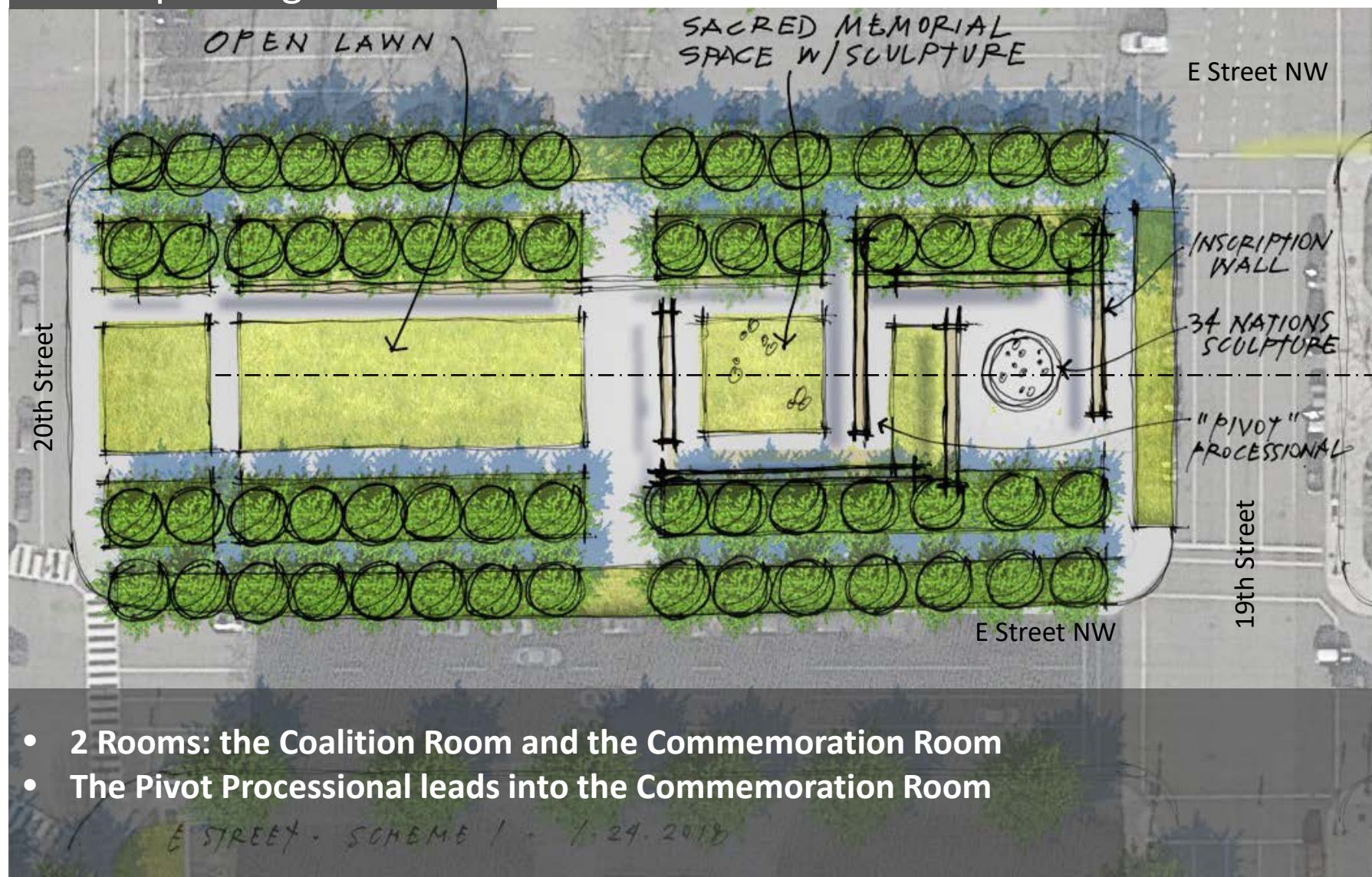


Concept Design Review



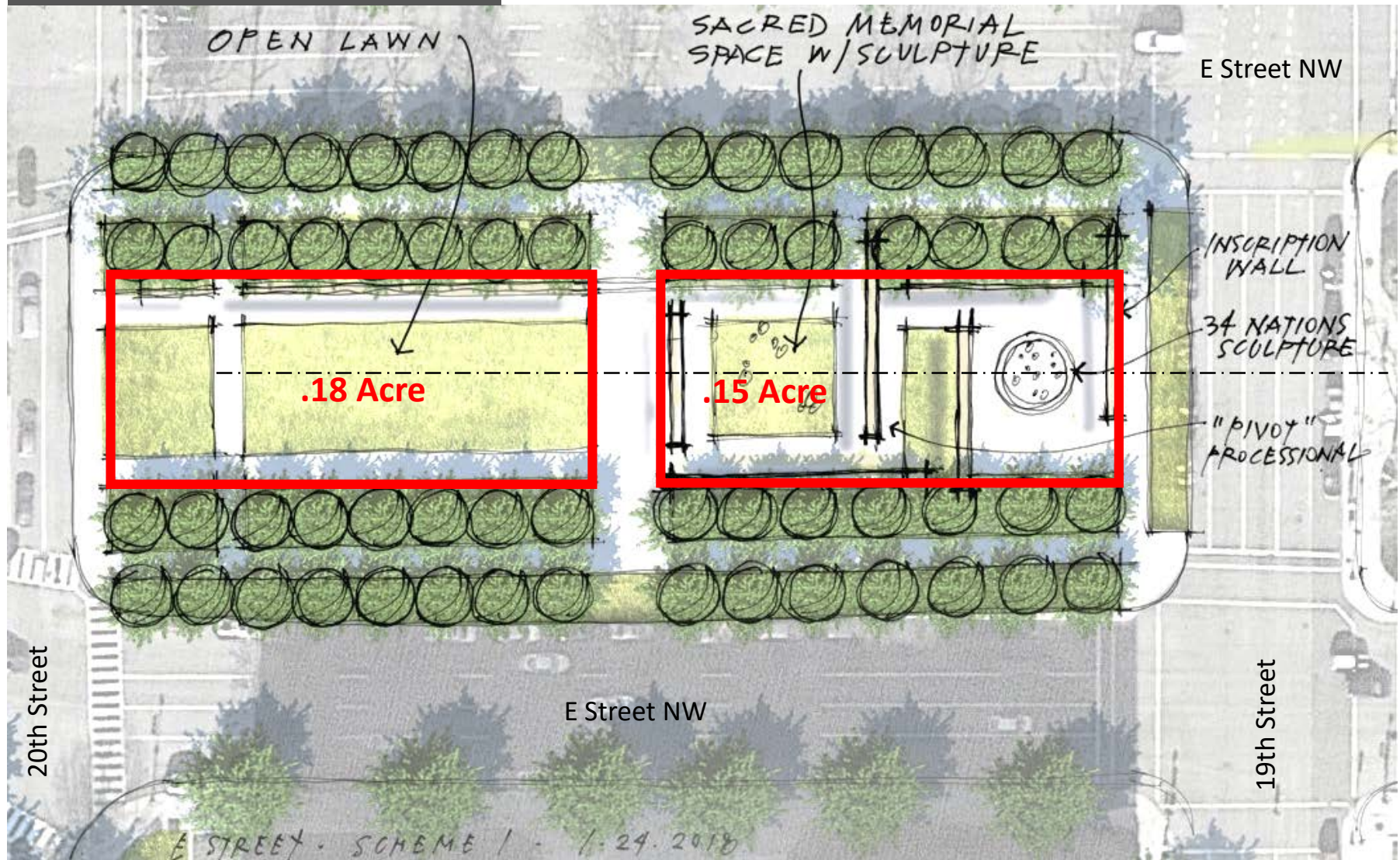
- Respects the existing central axis of Rawlins Park
- Continues the existing tree allees of Rawlins Park
- Develops the east side of site, oriented toward the pedestrian access from the National Mall
- Preserves the west side of the site for future commemoration

Concept Design Review

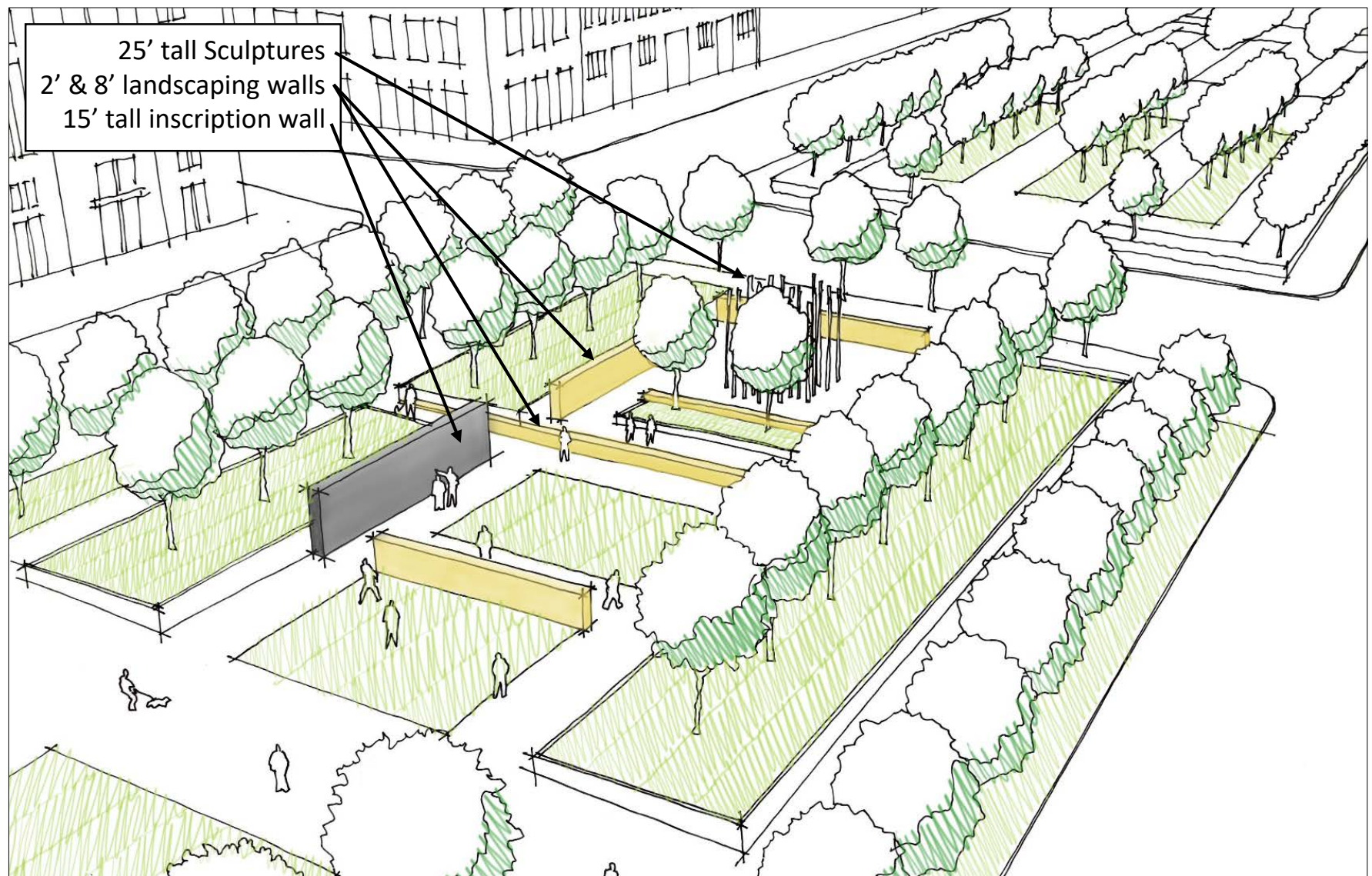


- 2 Rooms: the Coalition Room and the Commemoration Room
- The Pivot Processional leads into the Commemoration Room

Concept Design Review



Concept Design Review



Concept Design Review



- Respects the existing central axis of Rawlins Park
- Continues the existing tree allees of Rawlins Park
- Develops the east side of site, oriented toward the pedestrian access from the National Mall
- Preserves the west side of the site for future commemoration

Concept Design Review

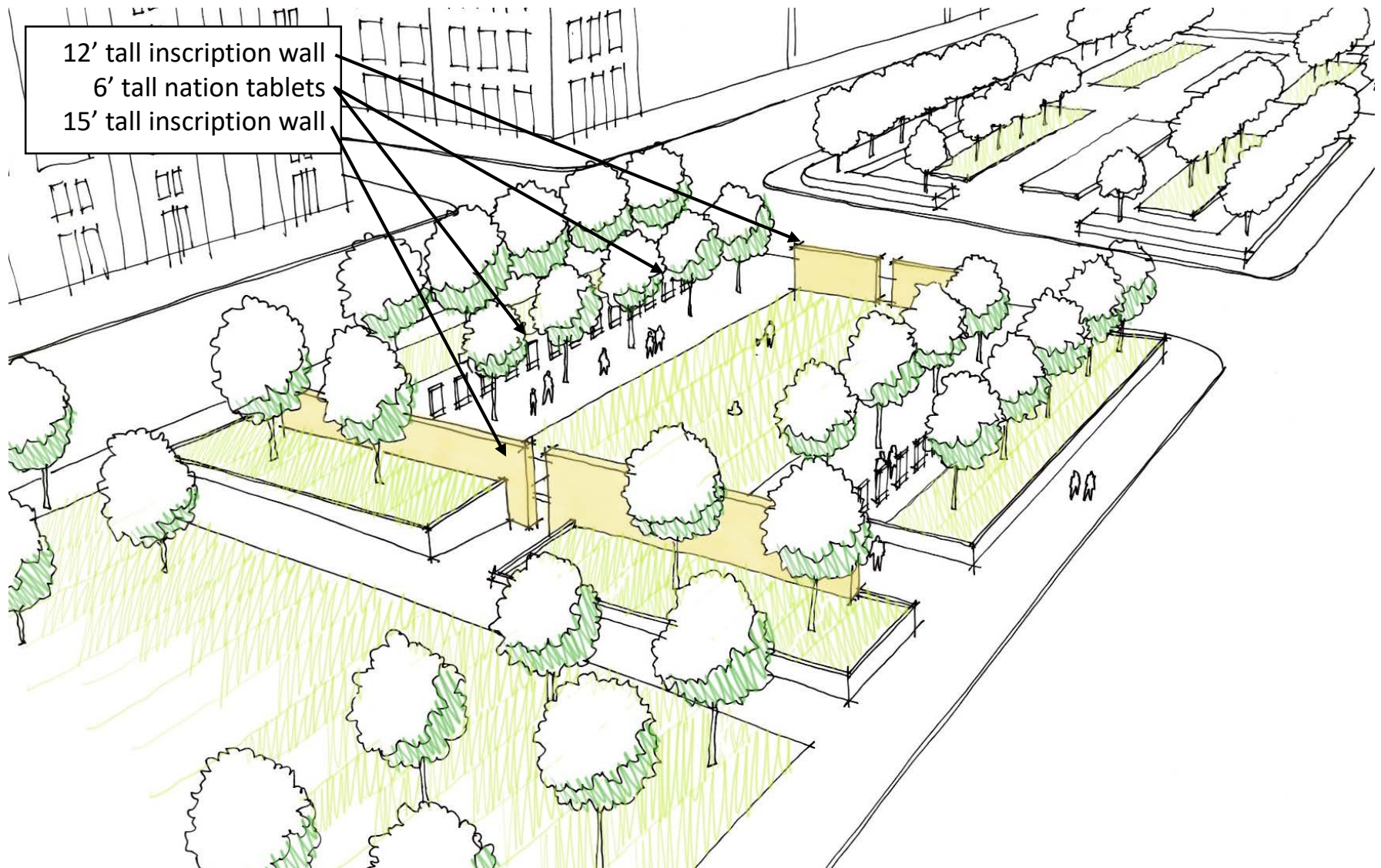


- Formal, axial, one-room concept
- Commemorative sculpture with inscription wall terminates axis
- Open lawn and central axis is flanked by 2 processions, honoring the 34 nations in the coalition

Concept Design Review

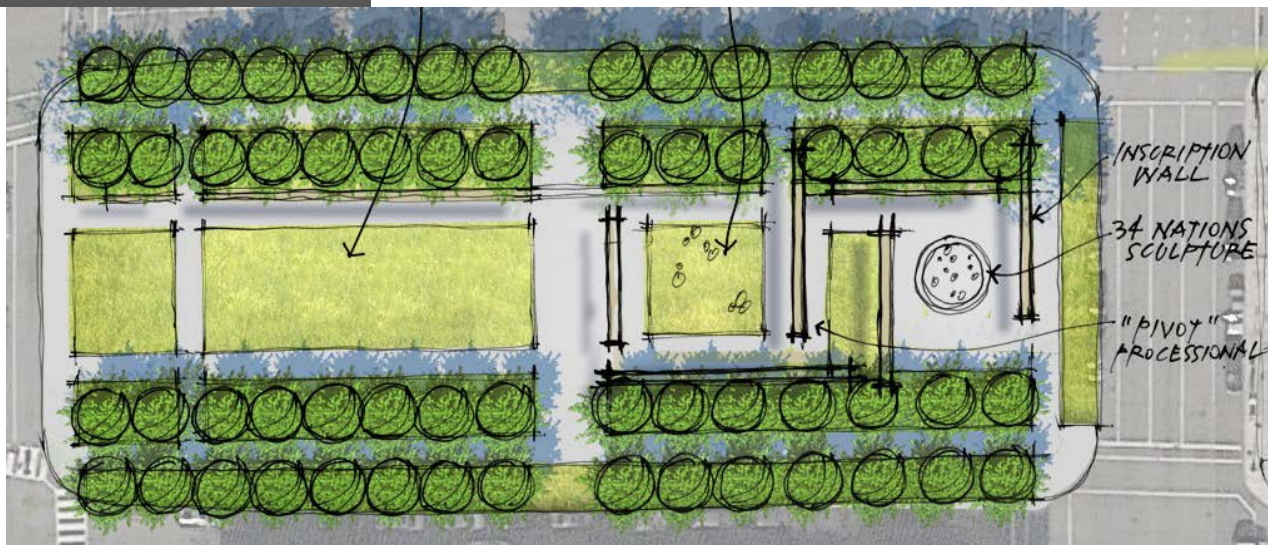


Concept Design Review

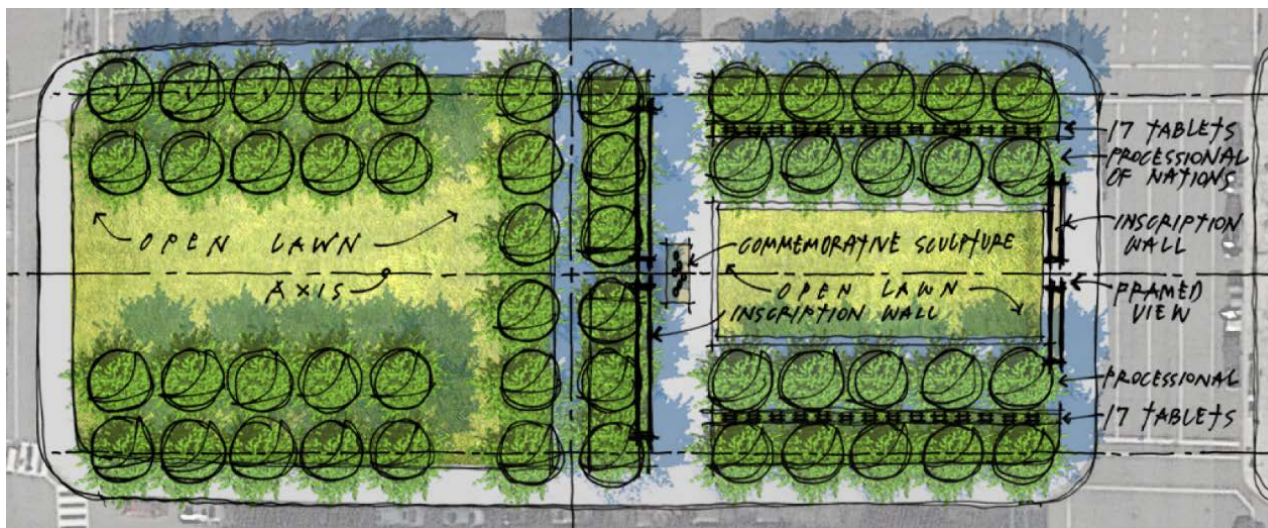


Concept Design Review

Scheme 1



Scheme 2



Concept Design Review

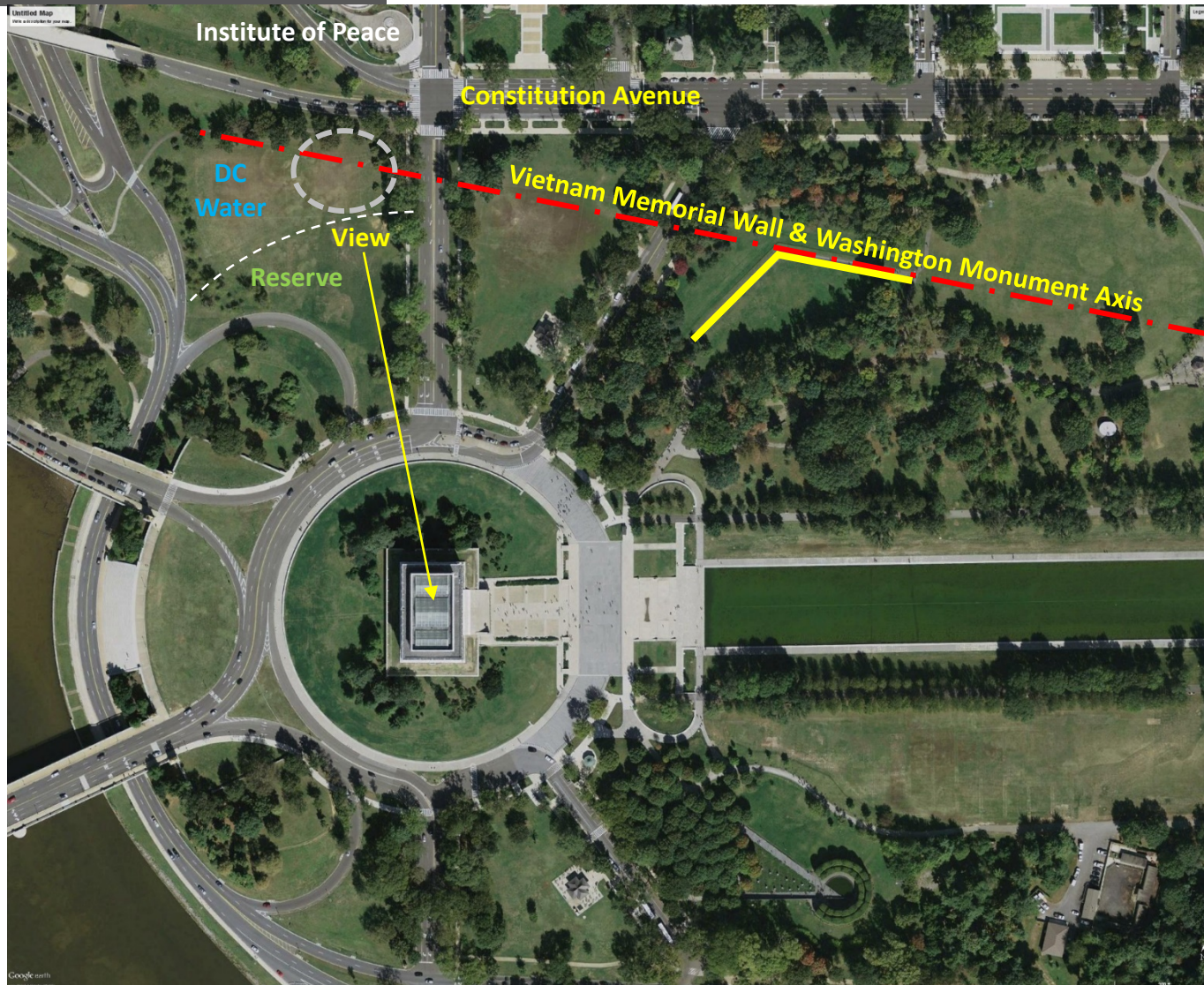
► 23rd & Constitution Avenue

SITE CHARACTER: The Cultural Landscape Site *Near the National Mall*

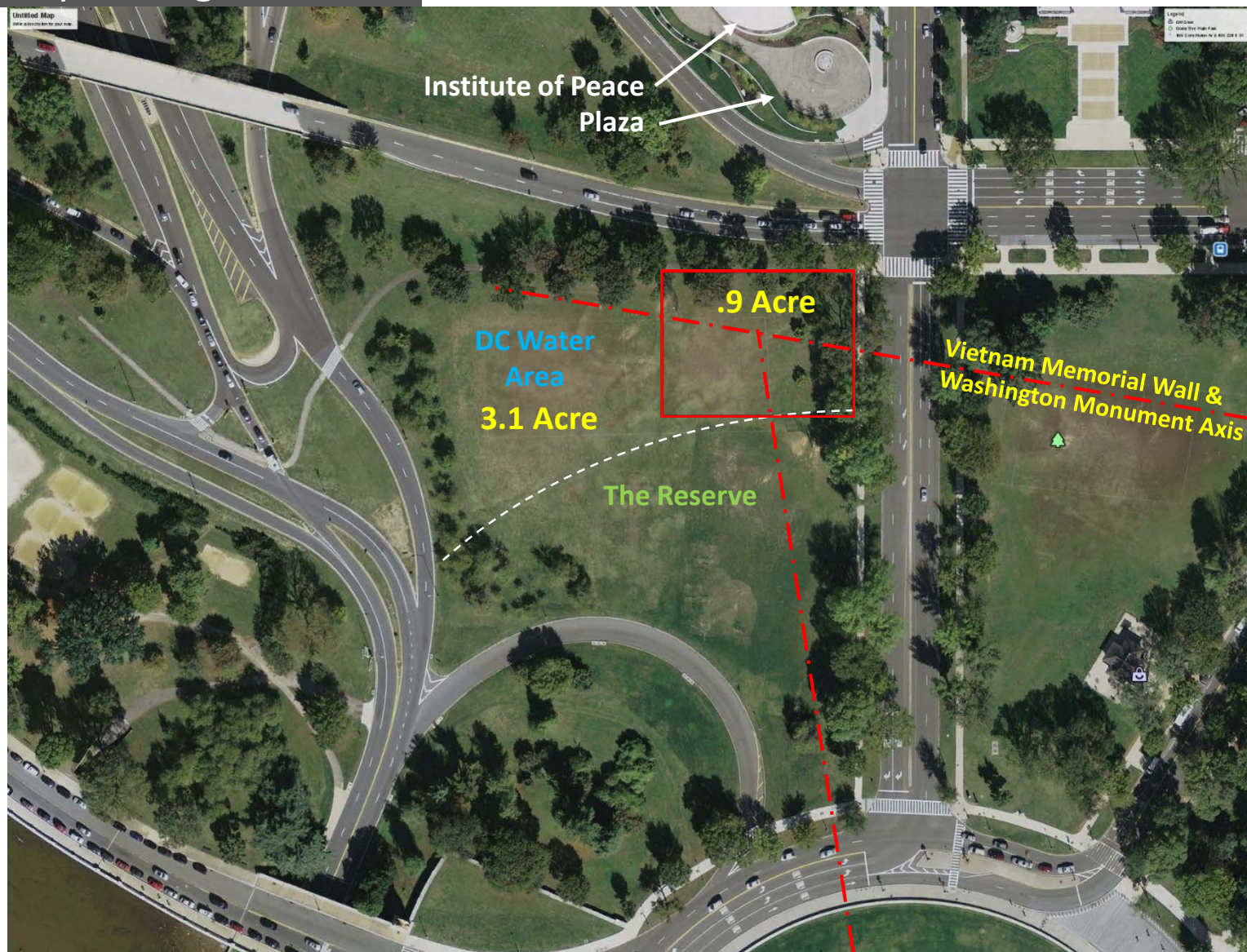
Site Characteristics:

- Site #6 in the Memorials and Museums Master Plan
- Thematic connection to the 1991 Victory Parade on Constitution Ave
- Adjacent to the National Mall
- Area I location, the Reserve is to the south
- Lincoln Memorial adjacency: A symbol of liberation & freedom
- Connections to other national memorials
- On-street parking on Constitution Avenue
- Outside of 100-year flood plain, within 500-year floodplain
- Coordination with future DC Water & levee projects

Concept Design Review



Concept Design Review



Concept Design Review



Concept Design Review

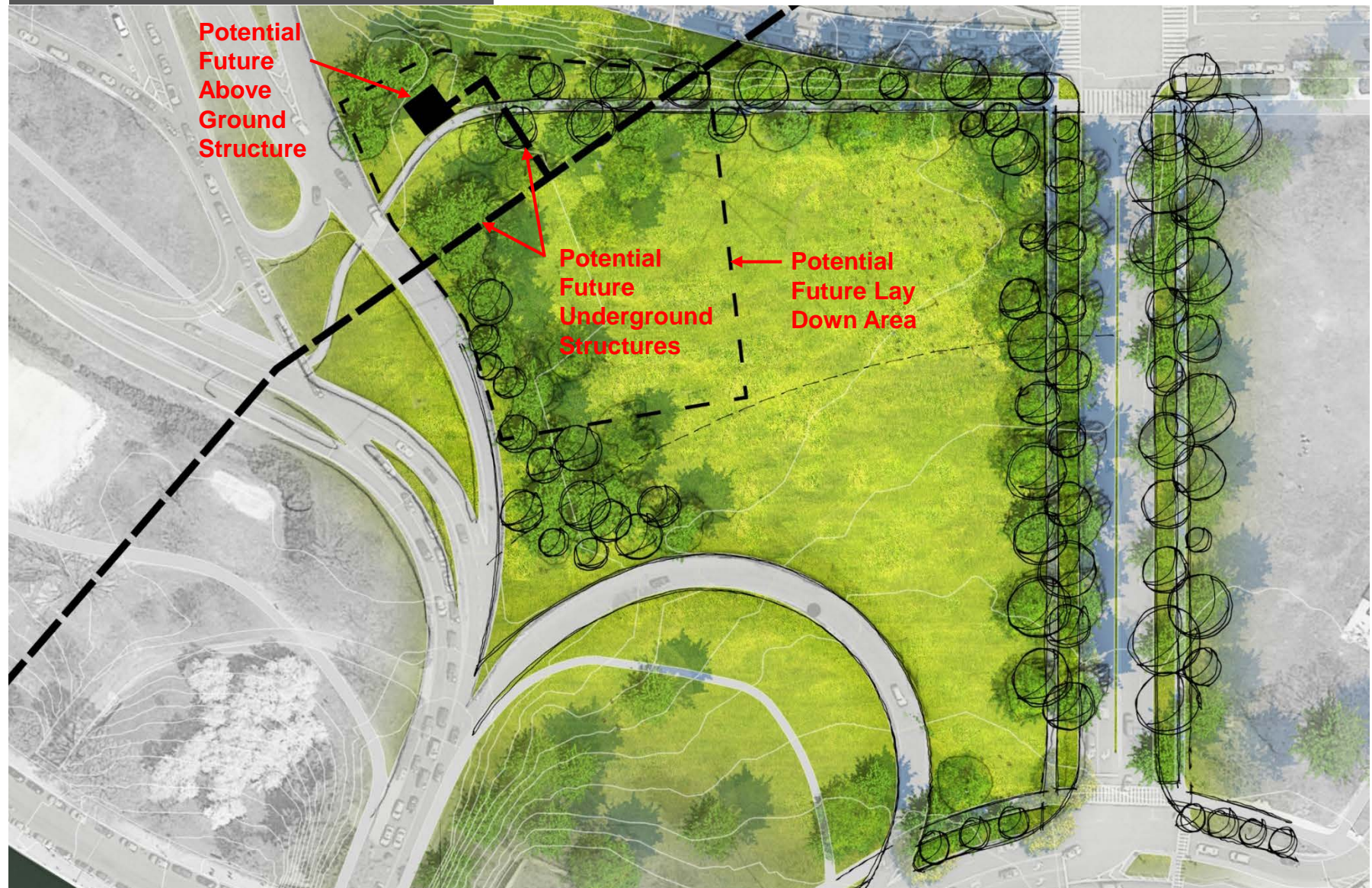


► **23rd & Constitution** – Site Photo – looking toward the Lincoln Memorial

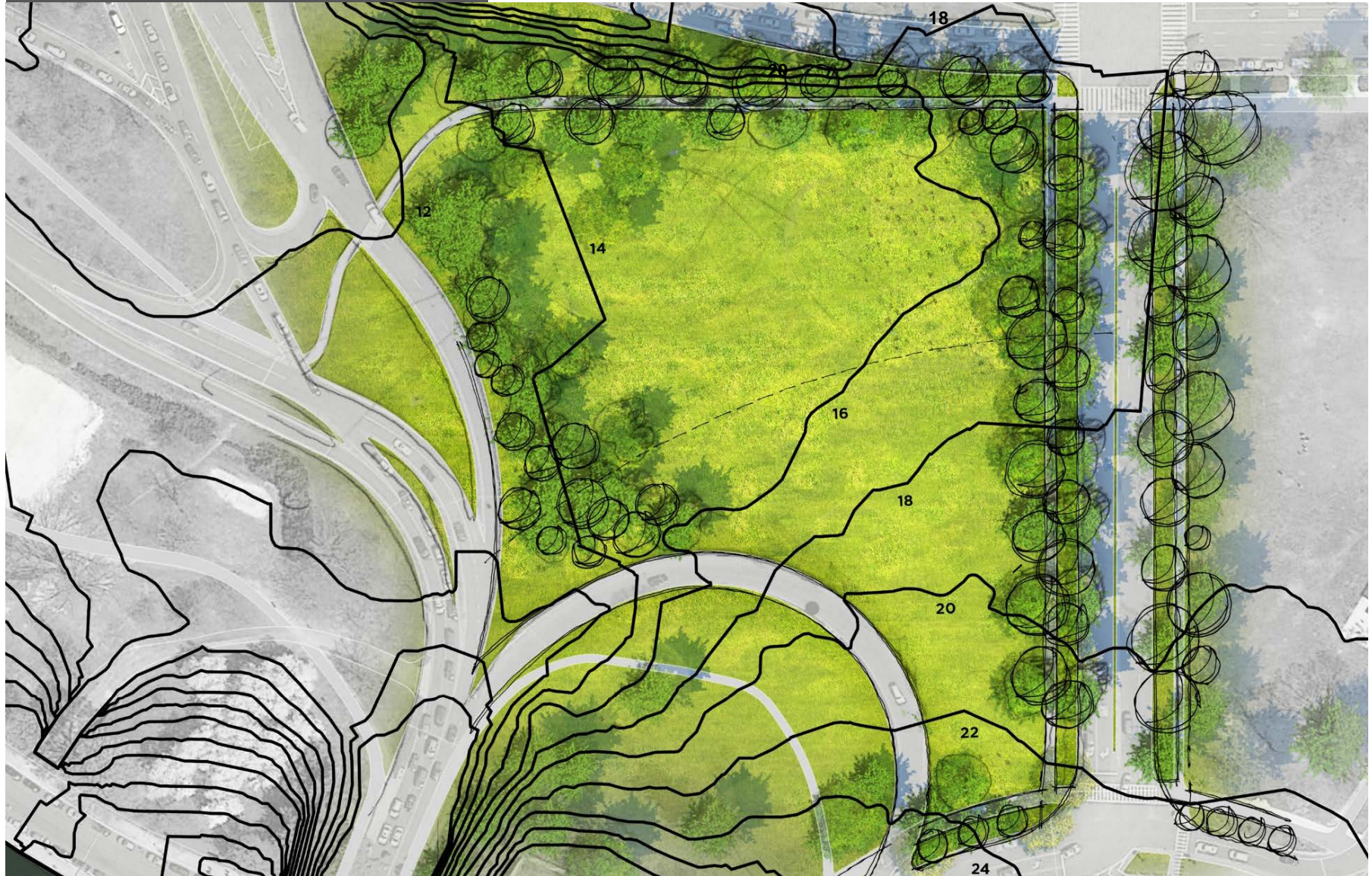
Concept Design Review



Concept Design Review



Concept Design Review



Concept Design Review

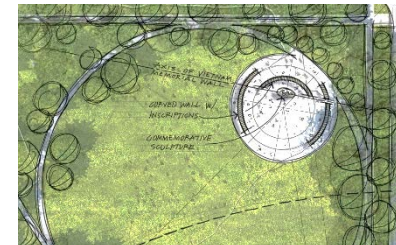
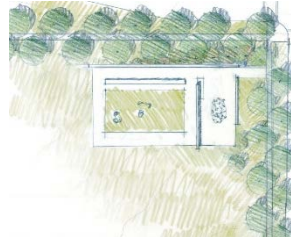
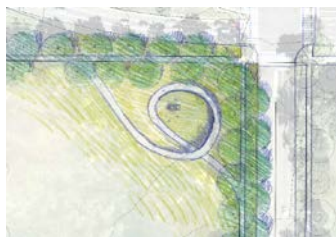
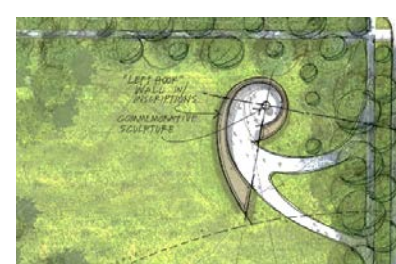
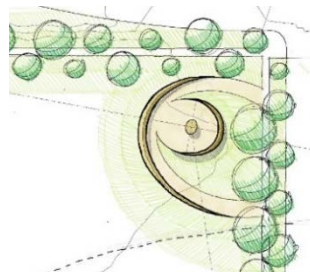
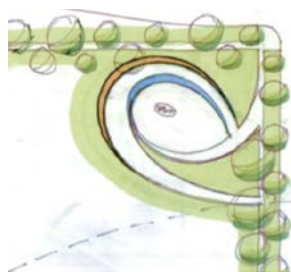
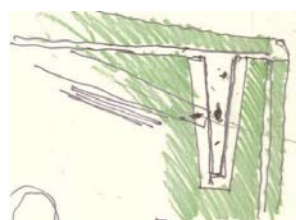
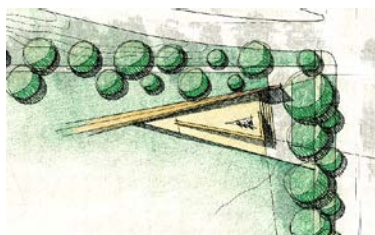
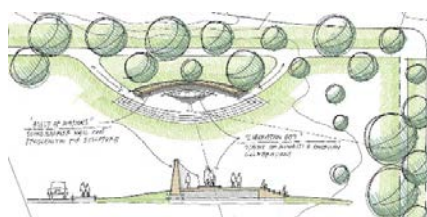
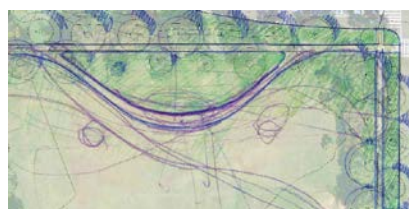


Concept Design Review



Concept Design Review

A few of the many design concepts that were explored for this site:

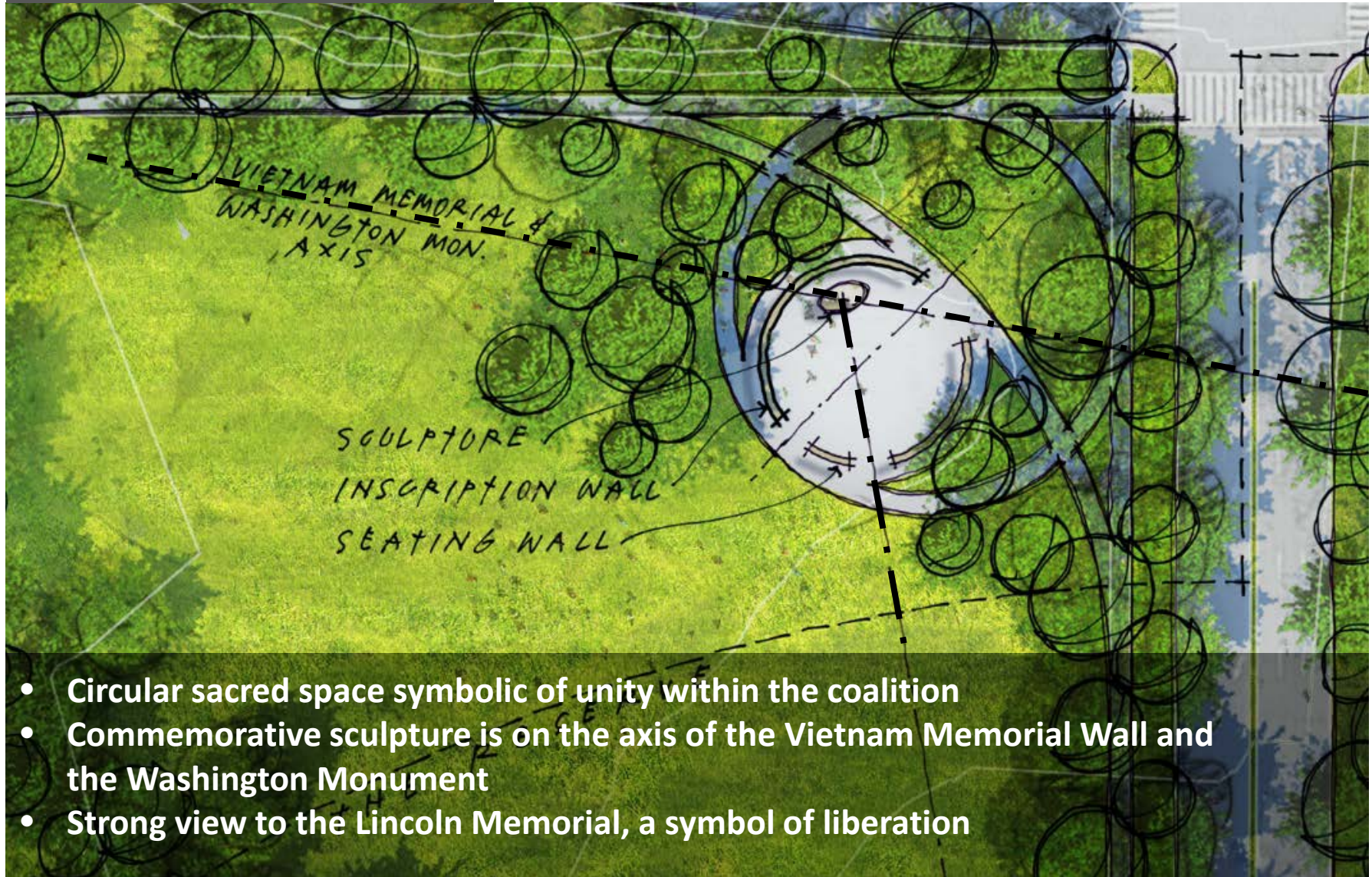


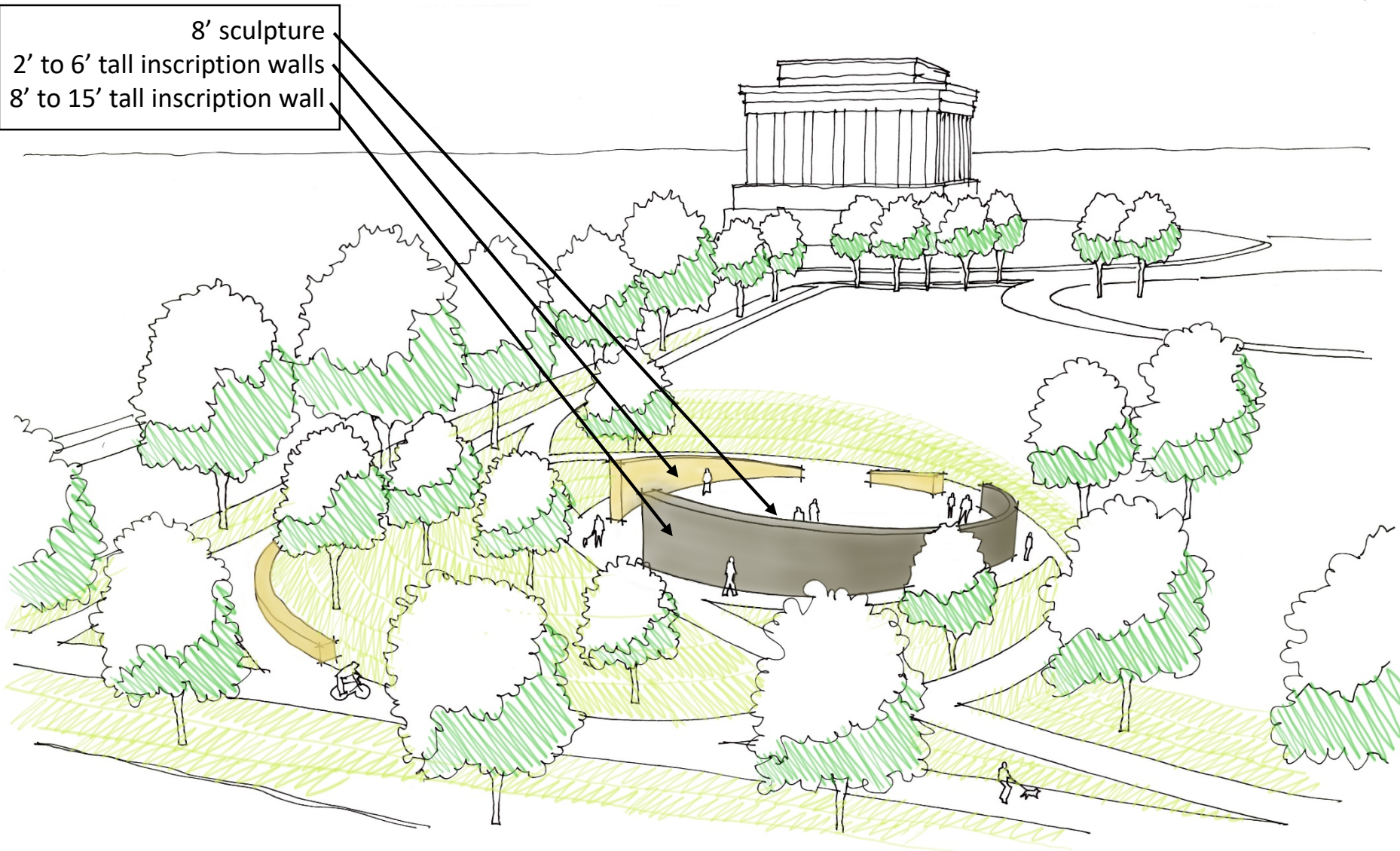
Concept Design Review



- Occupies northeast portion of site, accommodating DC Water project
- Strong thematic connections to the Vietnam War Memorial (change in public attitudes) and the Lincoln Memorial (symbol of liberation)

Concept Design Review

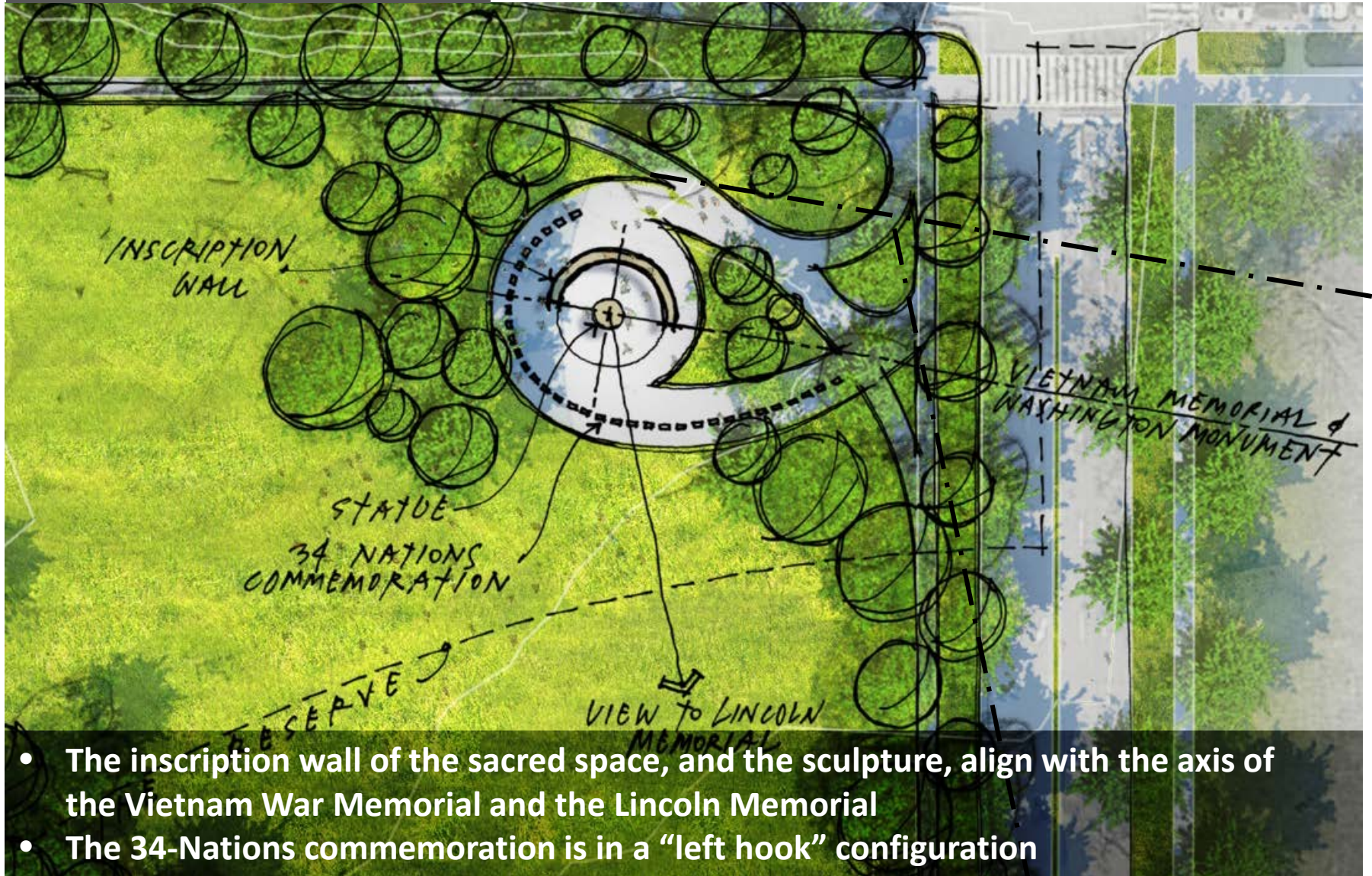




Concept Design Review

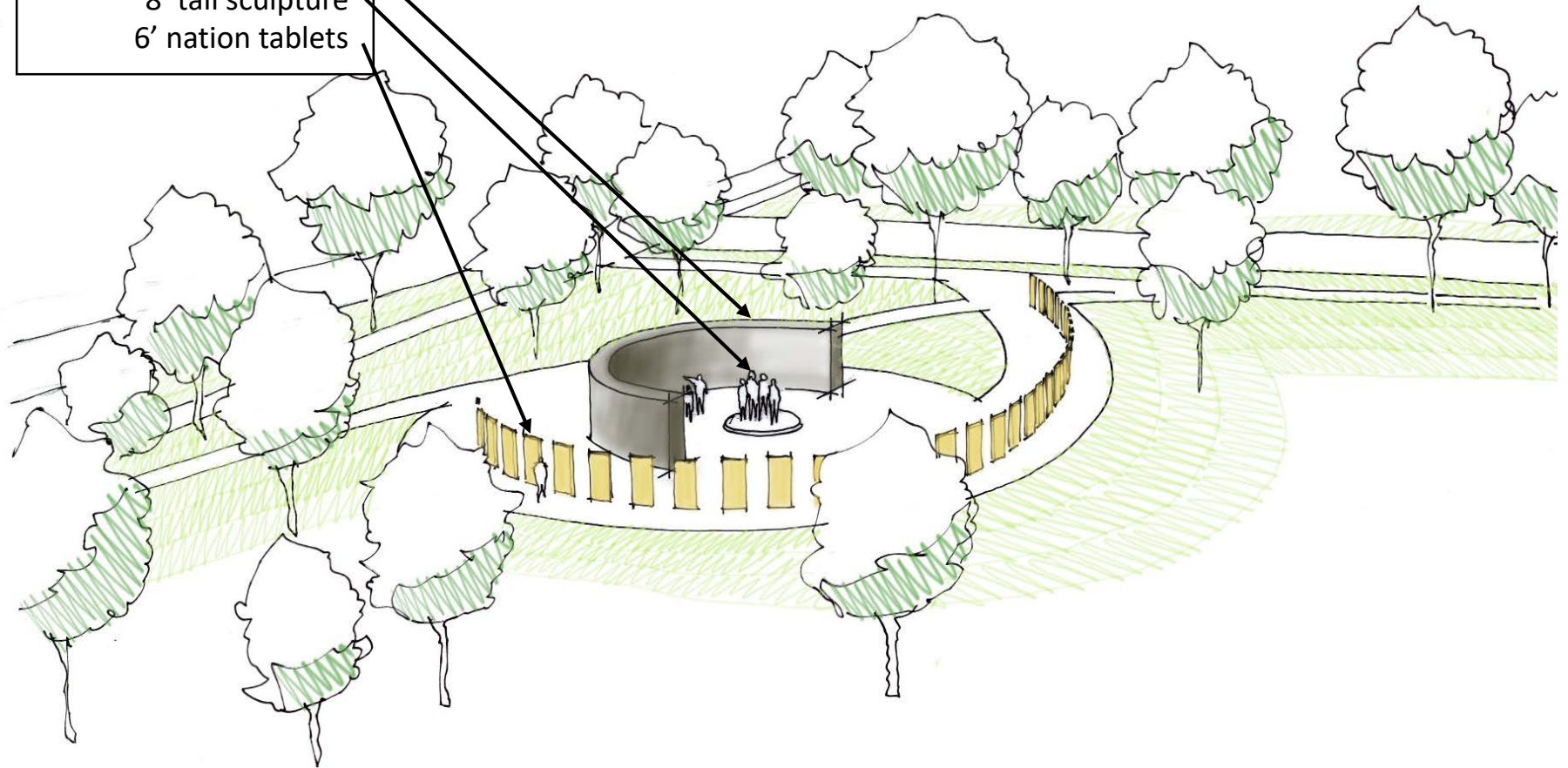


Concept Design Review



Concept Design Review

15' tall inscription wall
8' tall sculpture
6' nation tablets

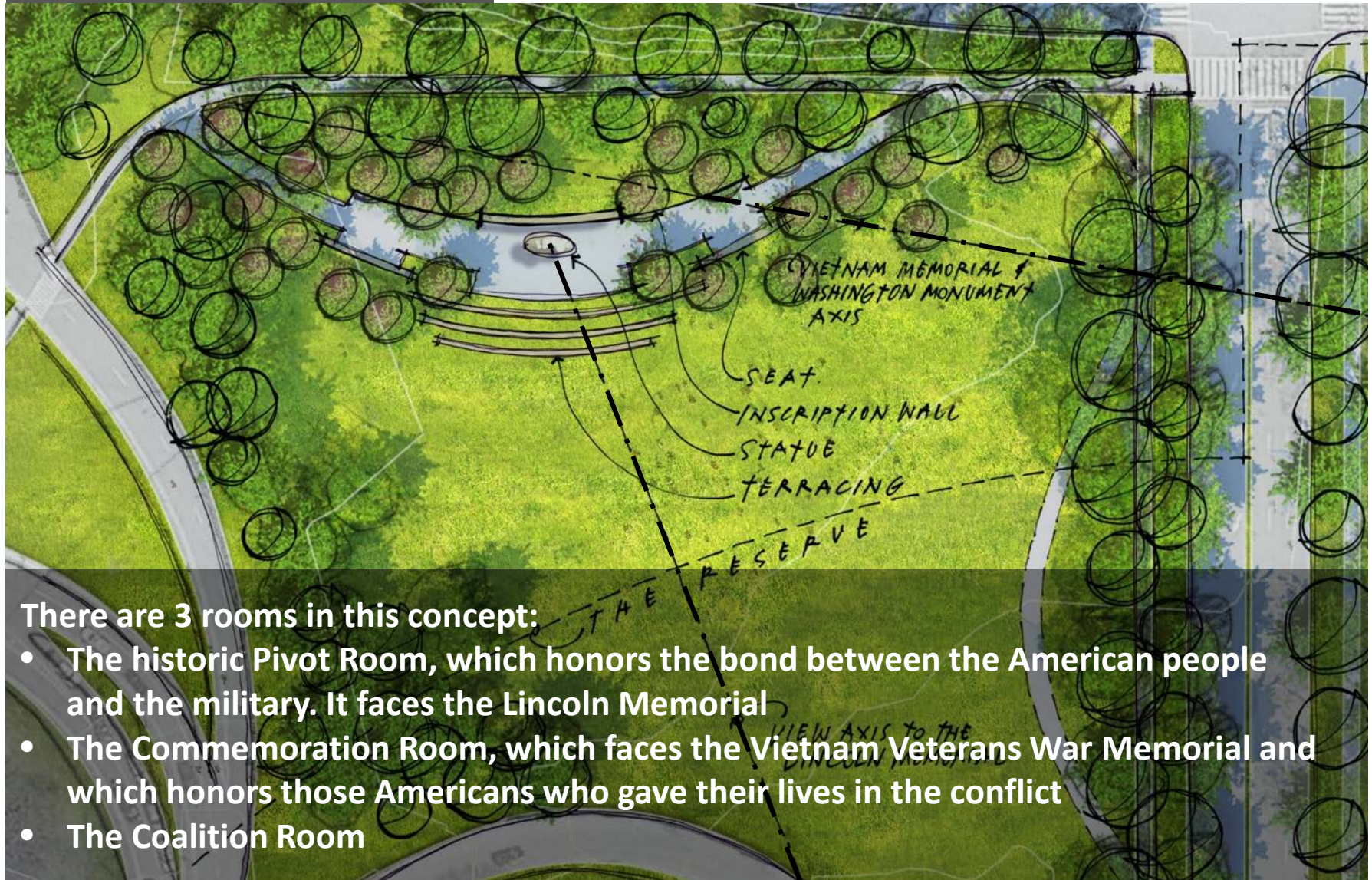


Concept Design Review



- Occupies north portion of site, accommodating the DC Water project to the south
- Strong views and thematic connection to the Lincoln Memorial (symbol of liberation)
- Secondary axial connection to the Vietnam War Memorial (change in public attitudes)

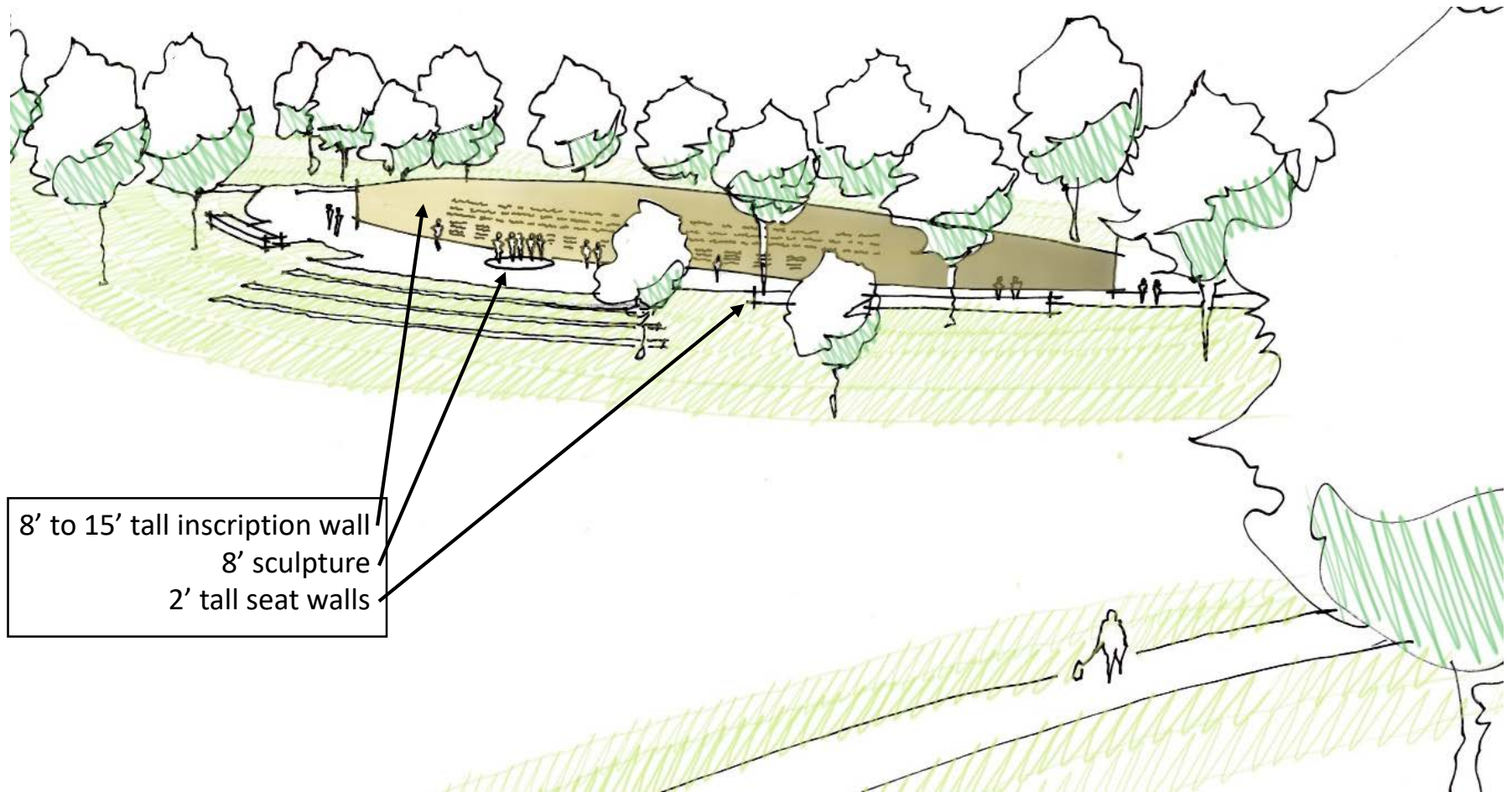
Concept Design Review



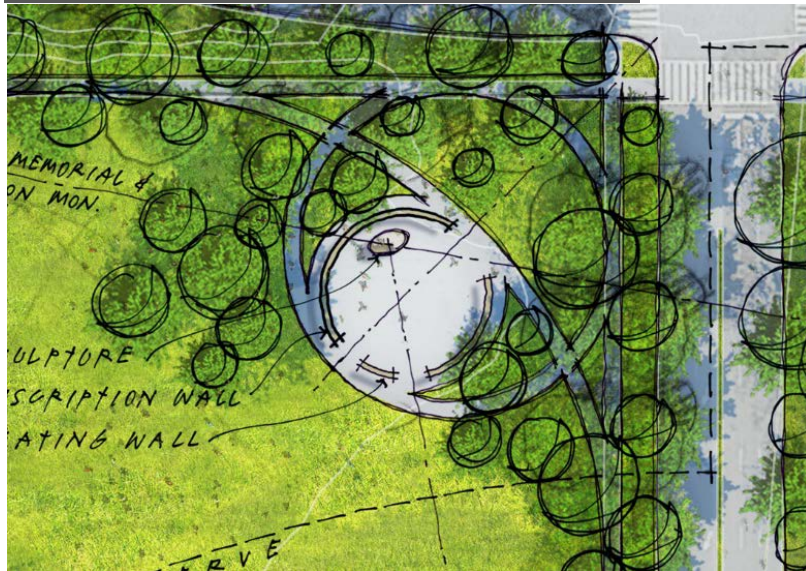
There are 3 rooms in this concept:

- The historic Pivot Room, which honors the bond between the American people and the military. It faces the Lincoln Memorial
- The Commemoration Room, which faces the Vietnam Veterans War Memorial and which honors those Americans who gave their lives in the conflict
- The Coalition Room

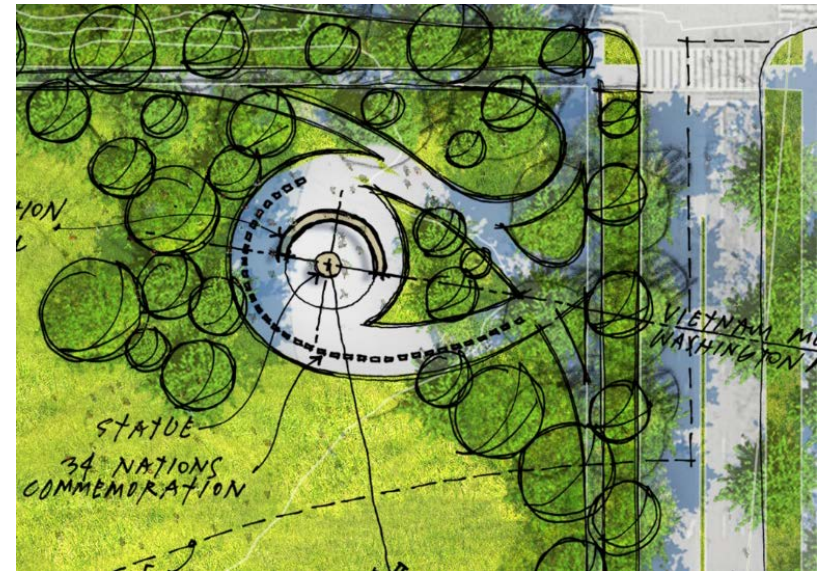
Concept Design Review



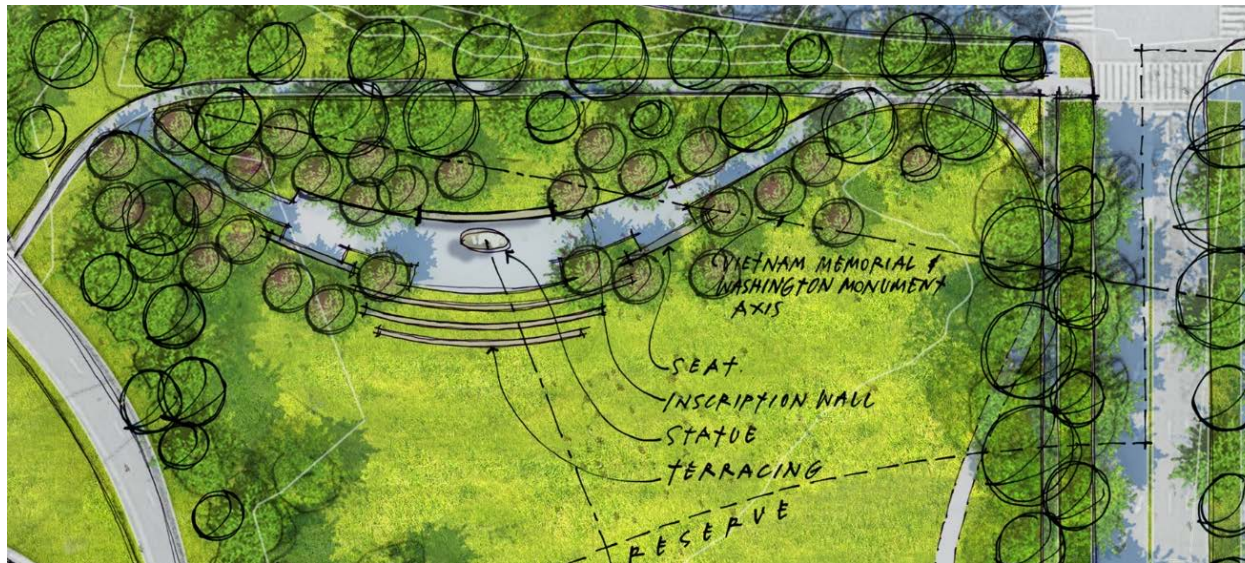
Concept Design Review



Scheme 1



Scheme 2



Scheme 3

Discussion

