

# Wuksachi Village Telecommunications Facility, Sequoia National Park

The National Park Service (NPS) is considering the issuance of a right-of-way permit to Verizon Wireless to construct, operate, and maintain a wireless telecommunications facility west of the Wuksachi Village within Sequoia National Park.

The facility would provide year-round cellular coverage in the vicinity of the Wuksachi Village and surrounding areas, including the Lodgepole Campground, Wolverton area, and portions of the Generals Highway. The proposed wireless telecommunications facility would be contained within a 40- foot by 40- foot area at the terminus of an existing paved access road (Figure 1), and would potentially include:

- A 138-foot tall tower with panel antennas and microwave dishes, covered with branches to simulate a pine tree (Figure 2)
- A covered 28-foot by 13-foot steel equipment platform and prefabricated shelter
- A 500-gallon propane tank mounted on a 5-foot by 10-foot concrete pad

An estimated 1,420 feet of buried electrical cable would be installed along the existing access road to connect the tower to an existing electrical transformer. Two 14-inch diameter fir trees would be removed from the facility site. Additional hazard trees may be removed in the project area, which has experienced high mortality of firs and pines in recent years.

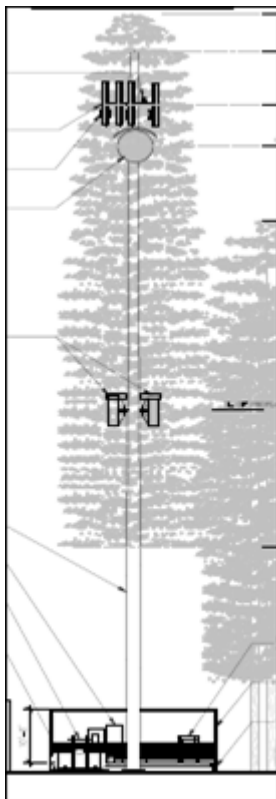
The project would affect about 0.23 acres (10,120 square feet) of park land. A raft- style foundation would be placed for the tower, and concrete foundations would be placed for the steel equipment platform and propane tank. Construction is expected to span 6 to 10 weeks and would occur in 2019 if the proposal is approved.

## **NEPA Process and Timeline**

- Project Initiation- November 2017
- Internal Scoping- December 2017- January 2018
- Public Scoping- April 2018
- EA Preparation- May 2018
- Public Review of EA- June 2018
- Final Decision – Late Summer 2018



*Figure 1 Aerial image of proposed telecommunications facility site.*



*Figure 2 Simulated Tree Cell Tower*

Figure 3 Attachment 1: Visual Simulation





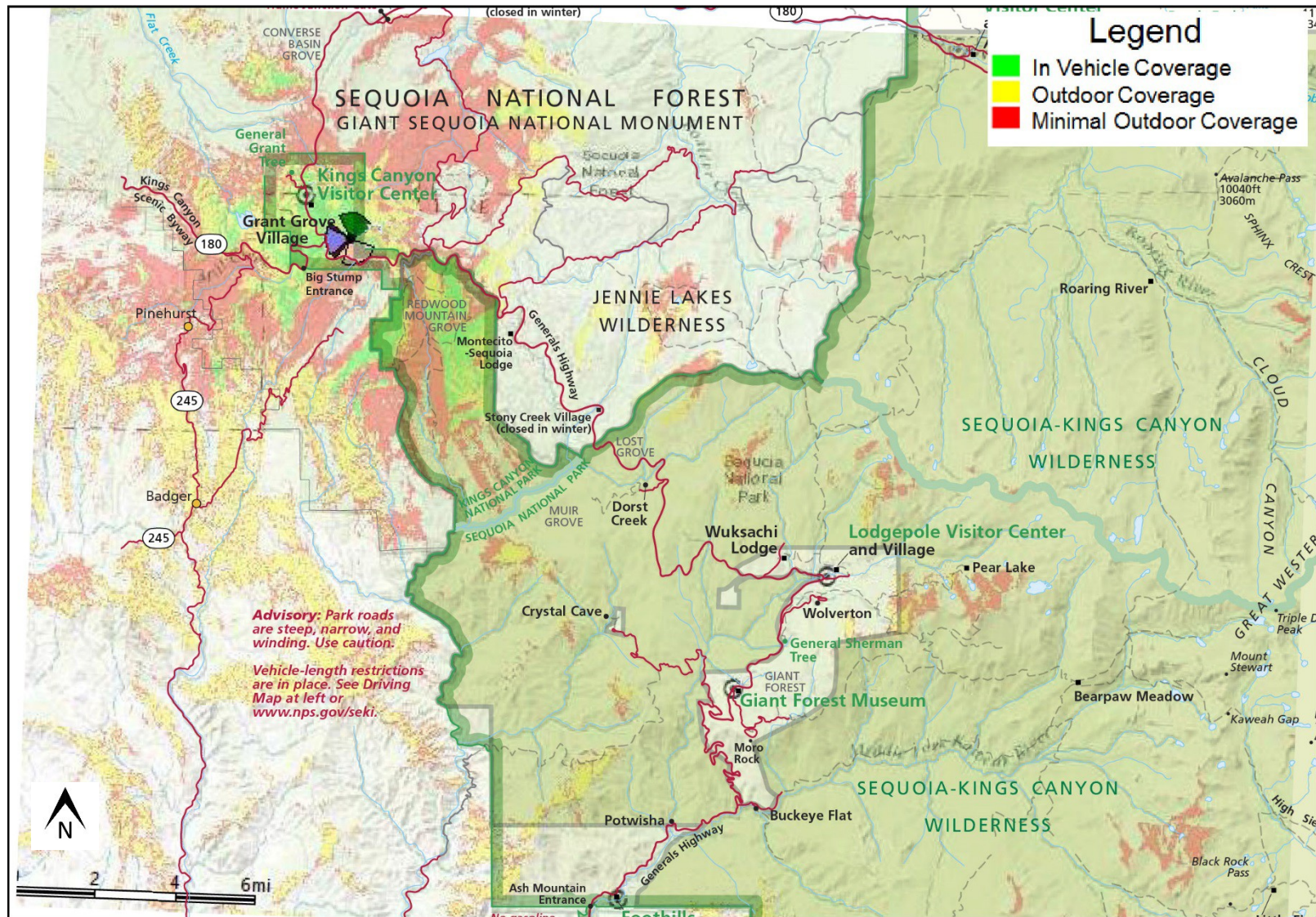


Figure 4 - Map A. Existing Wireless Coverage at Sequoia and Kings Canyon National Parks



Figure 5 Map B. Existing and Proposed Wireless Coverage at Sequoia and Kings Canyon National Parks. Antennas would be directed towards the Generals Highway/roads/developed areas, and away from wilderness.

