



# Join Pinnacles National Monument in Planning for the Next Century

*Dear Friends:*

I'm pleased to announce that Pinnacles National Monument is beginning the next phase of its General Management Plan.

Pinnacles was established as a National Monument in 1908 by President Theodore Roosevelt to protect 900 acres of forest land. Today, your National Monument is over 24,000 acres and home to volcanic rock formations, talus caves, riparian waterways, oak savannah woodlands, chaparral, and cultural landscapes that include prehistoric archeology, California homesteads, and historic construction from the Civilian Conservation Corps. The General Management Plan (GMP) will describe the long term vision for managing this rich fabric of central California's landscape, and provide guidance for management and development over the next 15-20 years.

You may recall that we started the GMP several years ago – in 1998. We held some public meetings, and asked for your ideas about the future of Pinnacles. Then we decided to put the planning process on hold until the purchase of Pinnacles Ranch and campground was completed, which occurred on March 15, 2006. Bringing this important piece of land into the monument took longer than expected, but it was worth the wait. The Ranch provides us new planning opportunities for the east side of the monument—addressing challenges we have been wrestling with for decades—such as better parking and transportation options, camping, education, and a wider range of opportunities for people with different interests and abilities.

In addition to acquiring Pinnacles Ranch, we have made great progress in reintroducing California condors, removing invasive exotic plants and destructive non-native pigs,



**Pinnacles Ranch dedication.** From left to right are Stu and Peggy Kingman, Superintendent Eric Brunnemann, Congressman Sam Farr, local school children, school teacher Tina Plunkett, and former Superintendent Steve Shakelton.

restoring Chalone Creek, reintroducing California red-legged frogs, and rerouting Bear Gulch Cave Trail to protect Townsend bat colonies while keeping cave routes open to visitors. With our expanding mission we have new partners, including the San Benito County Office of Education, Hartnell Community College, Institute for Wildlife Studies, San Benito Community Foundation, and the newly established Pinnacles Partnership—which is dedicated to ensuring excellence in education, resource stewardship and visitor experiences at Pinnacles National Monument for present and future generations.

We are now ready to continue the planning process, incorporating all public comments received during the first public comment period. Because so much has changed during the interim, we want to give you another opportunity to tell us what you would like us to address in our long-range planning for the park.

The GMP process gives all of us the opportunity to think about what we want from places like Pinnacles that embody our

national heritage. The surrounding areas are changing dramatically—as are our needs. What will you as a community expect? What will your children, and your children's children, experience when they come here?

This newsletter describes the GMP planning process and how you can be involved over the next three years. We hope you will tell us your thoughts and ideas, and work with us to plan for Pinnacles National Monument's second century.

Most Sincerely,

Eric J. Brunnemann  
Superintendent

## Contents

- Letter from the Superintendent
- What is a General Management Plan?
- Pinnacles National Monument Map
- Why was Pinnacles NM Established?
- Tell Us What You Think!
- General Management Plan Schedule
- Public Meetings Schedule
- Comment Form

# What is a General Management Plan?

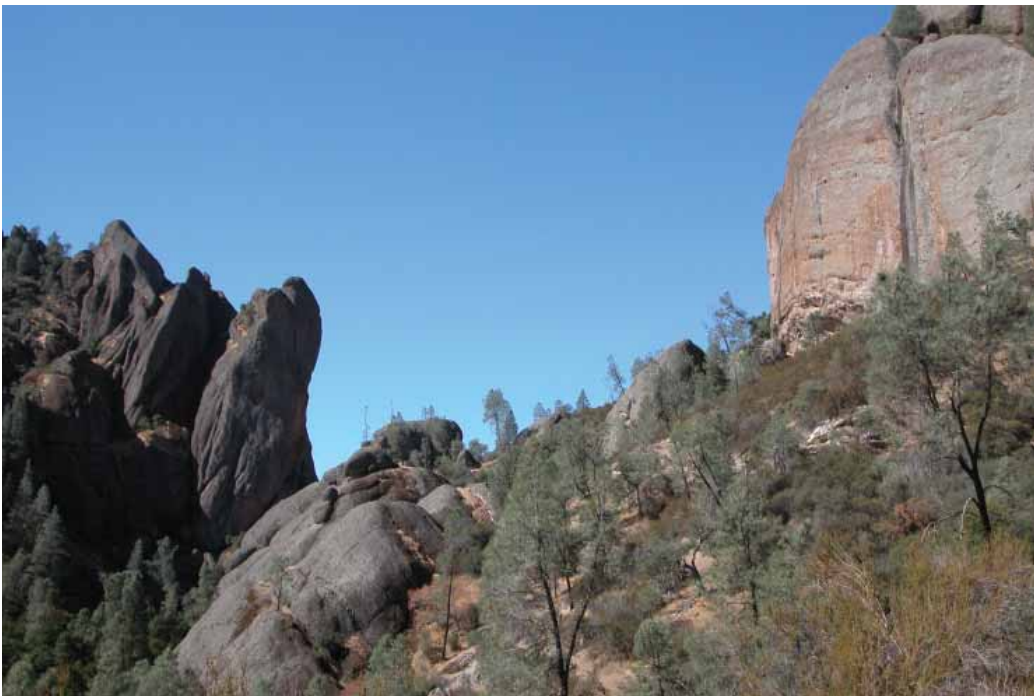
A General Management Plan (GMP) is an opportunity for you to help create a vision for the future of Pinnacles National Monument. A GMP is a long-range plan required for each park and monument in the national park system. It identifies the desired conditions for natural and cultural resources and visitor experiences, in order to guide Pinnacles' managers as they decide how best to protect monument resources, how to provide for high quality visitor experiences, and how to manage visitation and visitor use. The GMP planning process will involve the following steps:  
(See graphic on page 7.)

- **Foundation Planning:** document why the monument was established, what is significant about the monument and what are its most important resources.
- **Public Scoping:** identify goals and issues that need to be addressed in the planning process.
- **Data and Resource Analysis:** collect data and analyze existing conditions of the monument.

- **Develop Alternatives:** outline different possible futures for the monument and determine what actions are needed to accomplish these goals.
- **Prepare/Distribute Draft General Management Plan and Environmental Impact Statement:** prepare and distribute the draft plan for public, agency, and other stakeholder review.
- **Prepare Final General Management Plan and Environmental Impact Statement:** analyze comments, respond to comments, and revise the draft plan.

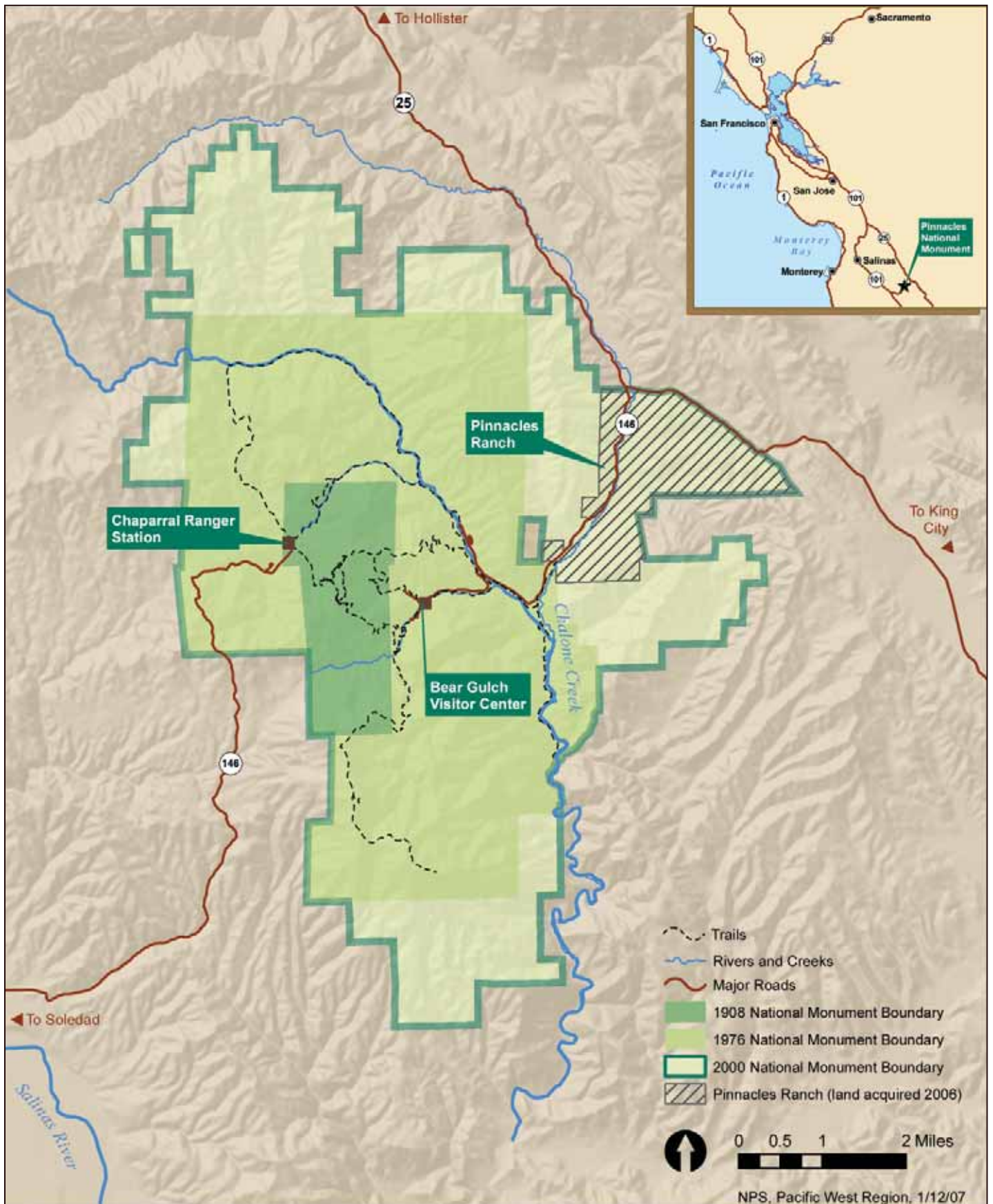
The GMP will provide a “blueprint” for the future of Pinnacles National Monument – what resource conditions and visitor experiences we will be striving to achieve over the next 15-20 years. The plan will not include facility designs, and it won't be able to resolve all of the identified issues, or guarantee funding for the park.

A General Management Plan provides a vision for the future and a framework for decision-making.





# Pinnacles National Monument Map



# Why was Pinnacles National Monument Established?

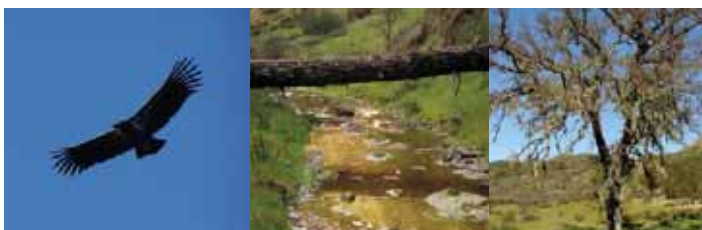
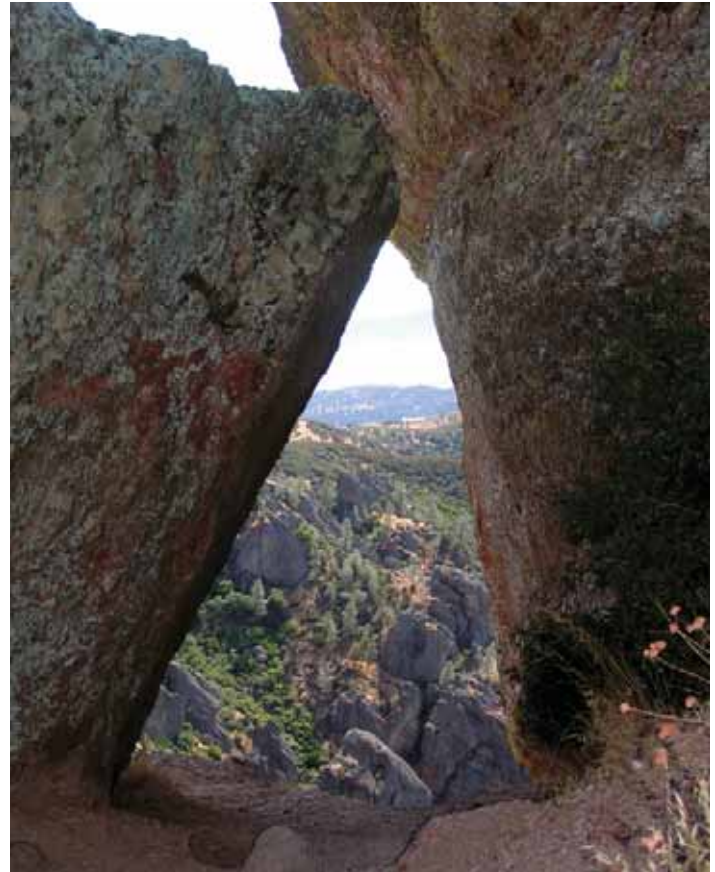
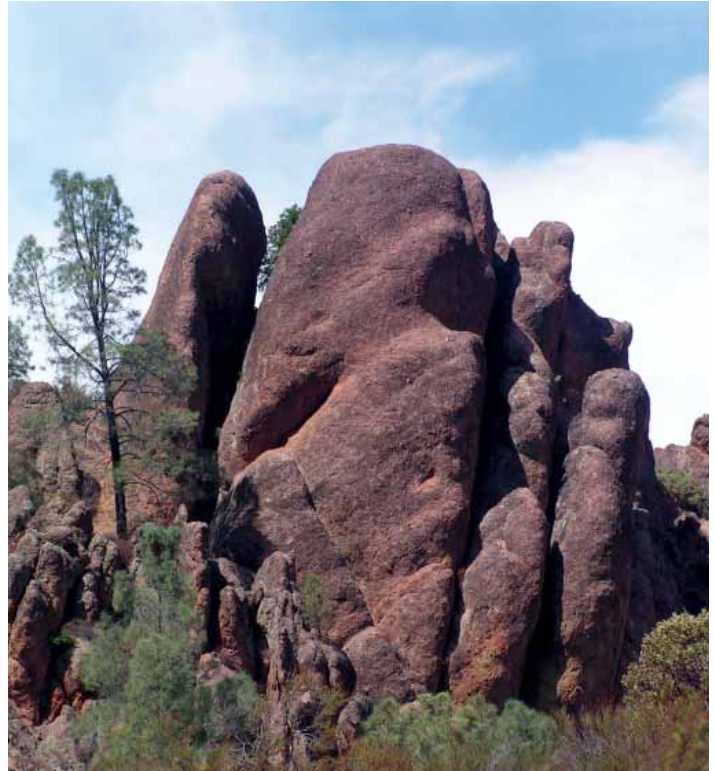
The first step of the GMP planning process is to clarify why the park exists – what was so special about Pinnacles that President Theodore Roosevelt signed a proclamation to preserve it? We answer this question by preparing a “foundation statement.” The foundation statement records our shared understanding of a park’s purpose, significance, and resources and values – a foundation for planning and management. The following are draft statements about Pinnacles’ purpose and significance prepared by park staff. Please let us know if you think we have accurately captured what is significant about the monument. We will use these statements to guide the development of the general management plan.

## Park Purpose

The purpose statement clarifies the reasons Pinnacles National Monument was established as part of the national park system and provides the foundation for management and use of the monument. The following draft purpose statement is based on the Presidential proclamation that established the monument and later proclamations and laws that gave further direction.

## Pinnacles National Monument’s Purpose:

The purpose of Pinnacles National Monument is to protect the volcanic Pinnacle Rocks formation, talus caves, associated lands and ecosystems that are of scientific and educational value, by caring for their natural processes and wild character for the benefit and inspiration of all.





## Park Significance

Significance statements define what is most important about a park's resources and values. These draft statements describe the park's distinctiveness in a regional and national context. They are based on the purpose for which the park was created. Understanding the national monument's significance helps guide and focus NPS decisions about managing the monument.

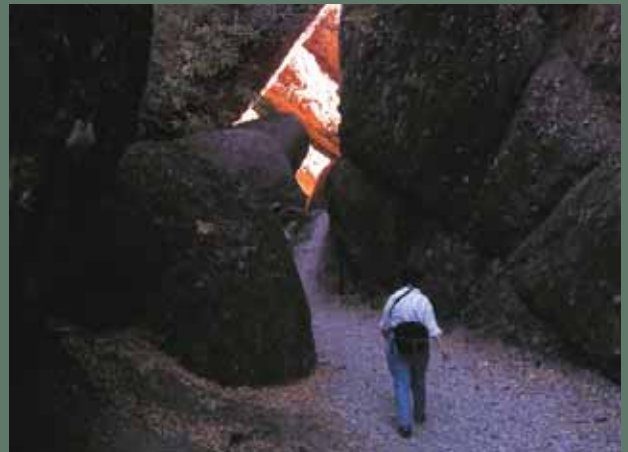
### **Pinnacles National Monument is nationally significant because:**

- Pinnacles National Monument contains a remnant of an ancient strata volcano that was split by the movement of two continental plates and provided key evidence for the theory of plate tectonics.
- Pinnacles National Monument contains the most extensive assemblage of rare talus caves within the National Park System and cares for the natural processes and ecosystems within.
- Pinnacles Wilderness protects the natural character of central California's native ecosystems and provides opportunities to experience wildness in an area of expanding urban development.
- The dynamic ecosystems of Pinnacles National Monument are a refuge for native species and their habitats.

### **Other Important Resources and Values**

The following resources and values are also important considerations for planning:

- The development and character of Pinnacles National Monument was strongly influenced by the work of the 1930s Civilian Conservation Corps, most of which remains today. Examples include stone buildings, trails, roads, bridges, and Bear Gulch reservoir.
- Other important resources and values are associated with ranching, homesteading, Native American use, and the grassroots efforts that established the national monument.



# Tell us what you think!

There will be several opportunities throughout the GMP planning process to share your thoughts and ideas with us. The graphic on p. 7 indicates public opportunities for comment and review at key points in the planning process.

Please let us know if you have thoughts, ideas and concerns about what should be addressed in the general management plan. It is important that we hear your ideas and concerns early in the planning process. The comment period for this stage of the planning process will extend through **May 31, 2007**.

You can send us your comments by completing the enclosed comment form and mailing it back to us or by submitting your comments electronically through the Pinnacles web site:

<http://www.nps.gov/pinn>

Under “**Quicklinks**,” click on “**General Management Plan**.” This web site will also include regular updates on the planning schedule, public meeting announcements, copies of newsletters and planning documents.

**Public Meetings.** This spring we will hold public meetings at several locations in the region. These meetings will provide an opportunity for you to share your thoughts, ideas, values, concerns and information. You will also be able to learn more about the planning process. Please refer to the dates at the back of the newsletter for a meeting near you.

## Newsletters and Web site.

Newsletters such as this will be distributed periodically throughout the planning process. For the most up-to-date information, you can view the Pinnacles web site. All newsletters will be posted on the planning web site and you can enter in your comments through the web site.

**Discussions with Groups and Organizations.** Our planning team members will also meet with interested agencies and organizations in order to gather and generate ideas, and to provide information about the plan's progress.

This GMP was started several years ago – in 1998. We held some public meetings, and asked for your ideas about the future of Pinnacles NM. Some of you may have provided comments at that time and your comments were recorded and will still be considered. A summary of comments from the 1998 public meetings is posted on the Pinnacles web site.

The planning process was put on hold until acquisition of Pinnacles Ranch was completed in March 2006. Because it has been so long, and because so much has changed in the meantime, we're re-opening the public comment period. With all the changes that have taken place at Pinnacles and in the surrounding communities, we want to give you another opportunity to tell us what you'd like us to address in planning for the park's future.

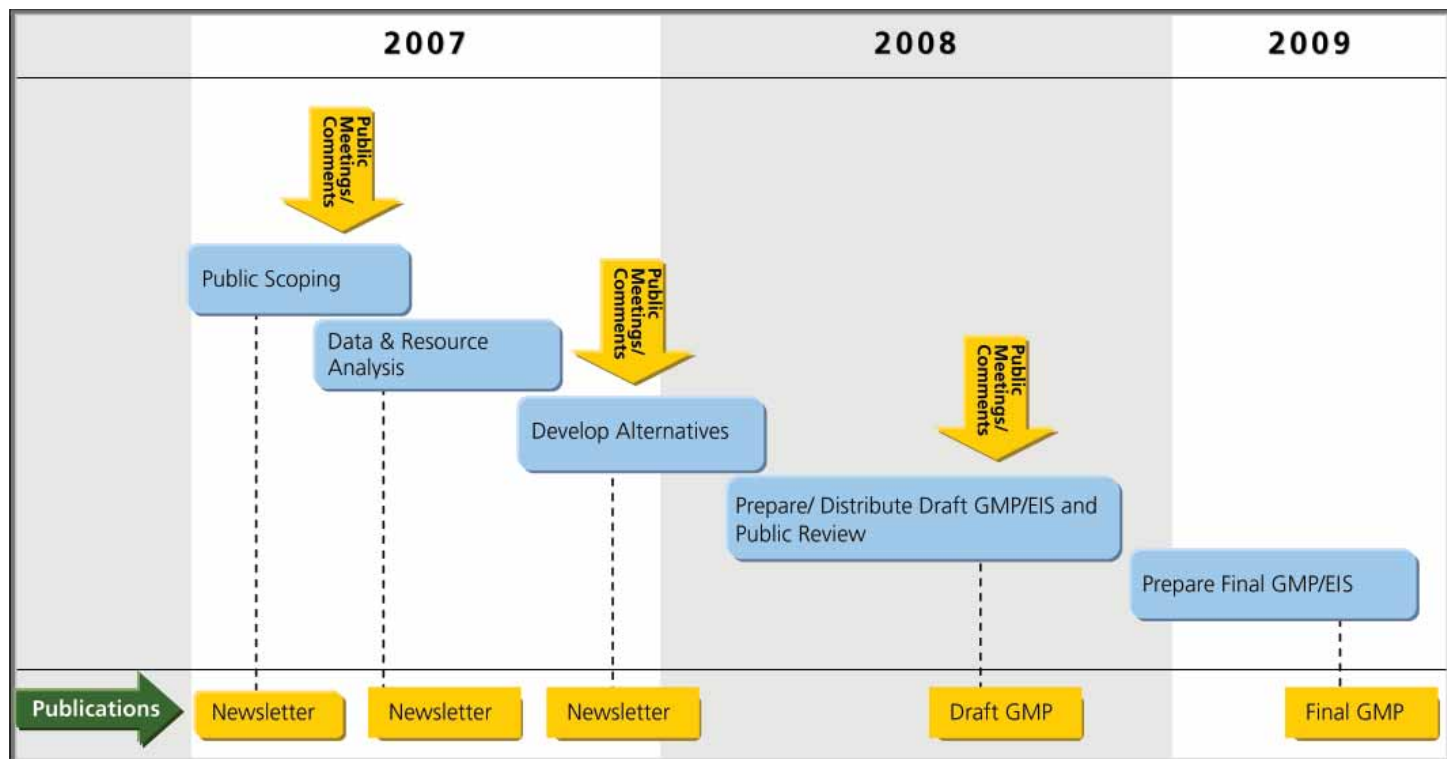
## Please send comments to:

**General Management Plan Team  
Pinnacles National Monument  
5000 Highway 146  
Paicines, CA, 95043**





# General Management Plan Schedule





National Park Service  
U.S. Department of the Interior

Pinnacles National Monument GMP  
5000 Highway 146  
Paicines, CA, 95043

EXPERIENCE YOUR AMERICA™

## Contact Information

### Mail:

Pinnacles National Monument GMP  
5000 Highway 146  
Paicines, CA 95043

### Phone:

Carl Brenner, GMP Information:  
(831) 389-4485 x 265

Martha Crusius, Project Manager:  
(510) 817-1447

### Park Web Site:

<http://www.nps.gov/pinn>

### E-mail:

[pinn\\_gmp@nps.gov](mailto:pinn_gmp@nps.gov)

## Public Meetings

This spring we will hold public meetings to give you an opportunity to tell us what you'd like us to consider in a new general management plan for Pinnacles National Monument. During these meetings you will have an opportunity to 1) learn more about the general management plan process and how you can participate, 2) discuss your ideas, thoughts and concerns about the future of Pinnacles National Monument, and 3) learn about current park programs.

This newsletter also describes other ways in which you can give us your comments and suggestions. We look forward to hearing from you!

### Soledad, CA

Wednesday, March 7, 2007, 7-9 pm  
Soledad High School  
Mission Room  
425 Gabilan Drive

### Hollister, CA

Monday, March 19, 2007, 7-9 pm  
San Benito County Board of Supervisors  
Chambers  
481 4th Street

### Paicines, CA

Tuesday, March 20, 2007, 7-9 pm  
Jefferson School, Meeting Hall  
221 Old Hernandez Road

### Santa Clara, CA

Saturday, March 24, 2007, 1-3 pm  
Santa Clara University  
Rm 129 in the Arts & Sciences Bldg  
(Building 804)  
500 El Camino Real