

National Mall and Memorial Parks

Lincoln Memorial Rehabilitation Environmental Assessment

NAMA 216042 | Contract No P15PC00012 | Task Order No P16PD01472

Consulting Parties Meeting Notes

February 21, 2018

This meeting was held to continue the Section 106 process with the consulting parties and to present information about the project, the alternatives developed, the adverse effects of the preferred alternative on the historic Lincoln Memorial (the memorial), and proposed mitigation measures. Consulting parties were given the opportunity to ask questions and provide comments about the project. The project team includes members from the National Park Service (NPS)—including those from National Mall and Memorial Parks (NAMA or the park) and the National Capital Region (NCR)—and the NPS’s consultants from Quinn Evans Architects and VHB. Consulting parties included attendees from the DC Historic Preservation Office (SHPO), Advisory Council on Historic Preservation (ACHP), National Capital Planning Commission (NCPC), US Commission of Fine Arts (CFA), National Trust for Historic Preservation (National Trust), Committee of 100 on the Federal City, Eastern National, and the DC Preservation League. Sign-in sheets from the meeting are attached for reference.

Attendees

Name	Affiliation	Name	Affiliation
Catherine Dewey	NPS–NAMA	Andrew Lewis	DC SHPO
Mike Commisso	NPS–NAMA	Rob Nieweg	National Trust
Sean Kennealy	NPS–NAMA	Richard Bush	Committee of 100
Yue Li	NPS–NAMA	Rebecca Miller	DC Preservation League
Maureen Joseph	NPS–NCRO	Stacy Madalena	Eastern National
Chris Wilson	ACHP	Nick Miano	Eastern National
Lee Webb	NCPC	Steven Spurlock	Quinn Evans Architects
Frederick Lindstrom	CFA	Abby Tourtellotte	Quinn Evans Architects
Sarah Batcheler	CFA	Erin Leatherbee	VHB

Presentation Summary

After brief introductions, the NPS gave an informational presentation (attached for reference) that provided an overview of the following:

- overview of the project
- brief historical overview of the memorial
- status of the Section 106 process
- review of the area of potential effect
- review of contributing and non-contributing features
- alternatives developed
- adverse effects of the preferred alternative on historic properties
- proposed mitigation options

Open Discussion

Attendees were able to ask questions during the presentation, and an open discussion was held after the presentation. Questions and/or concerns and the associated responses are summarized by topic below.

Mitigation

- Question/concern: Photo documentation of the exterior doors and other areas that will be changed should be included in the mitigation.
 - Response: NPS will complete HABS documentation for areas where changes will occur. NPS noted that HABS documentation was completed for some areas in 2005. They will update the documentation as needed for this project.
- Question/concern: Interpretive exhibits should focus on the construction of the memorial rather than on Lincoln himself to provide a new experience.
 - Response: The design team is currently working on creating exhibits around the themes of the memorial including why the site was chosen, who the architects were, how it was constructed, and what important events occurred at the memorial.
- Question/concern: What is the intent of the historic structure/landscape preservation maintenance plan in the proposed mitigation?
 - Response: This mitigation is to develop a standard for the desired appearance of the vegetation and historic structures in and around the memorial for maintenance staff to follow. It could include instructions such as how shrubs should be pruned and what to use to clean historic materials.
- Question/concern: The NCPC requested a review of the design as it moves forward and more detail is developed.
 - Response: NPS agreed to include design review in the stipulations of the MOA.
- Question/concern: An on-site, follow-up meeting with the consulting parties was requested once the design is implemented.
 - Response: NPS agreed to include a post-design meeting on-site in the MOA stipulations.

Effects on Historic Properties

- Question/concern: Will the NPS add new signage or advertisements to inform the public of the new experience? If so, will the new signs result in an adverse effect on the memorial?
 - Response: The NPS plans on advertising the new experience through signs, social media, the park website, and through park rangers. New signs installed will follow the park's approved sign plan and would likely be new panels on existing pylons. No adverse effect would result from those new panels.
- Question/concern: Since the previous consulting parties meeting, have there been any new designs for new mechanical systems that would result in impacts on the memorial?
 - Response: All new mechanical systems would be tied into existing vents and ducts. The undercroft space is large enough that the new mechanical systems will not need additional ventilation.
- Question/concern: Will there be change to historic materials visible to the public for installation of the second elevator? Will the existing door on the chamber level need to be modified?
 - Response: The elevator will use the existing space in the north side of the chamber level and will use the existing door, which meets code. All changes to the historic material will be in areas not visible to the public. The elevator and associated vestibule will mirror the existing elevator and vestibule.
- Question/concern: There was concern about the proposed viewing platform in the interpretive area that would extend into the undercroft between the first of the four main statuary undercroft columns. This platform may interrupt the complete view of those important columns and may limit the ability to fully experience and understand the structure of the statuary undercroft columns.
 - Response: The NPS feels strongly about having that space available for educational opportunities and ranger talks. The NPS will consider the effects of that viewing platform

on the experience of the statuary undercroft columns and will consider the balance of the interpretive opportunities and the related effects.

- Question/concern: It was noted that the interior changes in the undercroft would result in a larger adverse effect on the character of the undercroft than was expressed and NPS should expand this discussion in the Assessment of Effect table. The proposed mitigation would be commensurate with this larger adverse effect, particularly the interpretation of the memorial's construction.
 - Response: NPS will expand the discussion of the adverse effect on the character of the undercroft due to the larger interpretive area in the Assessment of Effect table and will ensure mitigation in the MOA is commensurate.

Visitor Experience

- Question/concern: How will the larger doors and second elevator affect how visitors access and experience the memorial? How will it affect the procession up the stairs? A concern was raised that visitors who enter the undercroft first may choose to take the elevator up to the chamber level rather than walking up the stairs. A related concern was that visitors in the chamber will not know there is an exterior door to the undercroft and will take the elevator by default.
 - Response: While visitor trends are difficult to predict because the undercroft will be a new experience, the NPS expects that most people will continue to use the stairs to access the chamber level due to high visitation, even with two elevators. The NPS also expects the majority of visitors to use the south door to access the undercroft due to its proximity to the parking area. The visitor experience in the undercroft is expected to average about 10-15 minutes, which was estimated based on current visitor trends. The NPS expects to have to adapt to changes in visitor use and may add more park rangers and/or signage to direct visitors to the stairs rather than the elevator when possible.
- Question/concern: The use of non-reflective glass in the exhibit space was suggested, particularly because visitors will take photos with flash.
 - Response: The NPS is looking at options for non-reflective glass that is also resistant to finger prints to limit the amount of cleaning/maintenance.
- Question/concern: What is the visitor capacity of each alternative?
 - Response: Alternative B, the preferred alternative, has a capacity of up to 499 people, which is driven by the number of egresses. Alternative C has a lower capacity of approximately 100-150 people, although the team did not have the specific number available at the meeting. It was noted that the wider doors proposed in the preferred alternative allow two visitors using wheelchairs or pushing strollers to use the doors simultaneously. The wider doors also allow maintenance equipment to be more easily brought into the undercroft for service as needed.

Next Steps

- Information provided at this meeting will be posted on PEPC.
- The NPS will revise the Assessment of Effect matrix to expand discussion of adverse effect resulting from the expanded exhibit level in the undercroft.
- The NPS will draft an MOA to resolve the adverse effects and circulate it for review.
- No additional consulting parties meetings are scheduled at this time.
- Construction is expected to be complete in late 2020.

Section 106 Consulting Parties Meeting

February 21, 2018

[illegible]

Rehabilitation of Lincoln Memorial

Section 106 Consulting Parties Meeting

February 21, 2018

[illegible]

REHABILITATION OF LINCOLN MEMORIAL

Section 106 Consulting Parties Meeting

21 February 2018





AGENDA

PRESENTATION

- WELCOME + INTRODUCTIONS
- IDENTIFY HISTORIC RESOURCES
 - ALTERNATIVES
 - ASSESSMENT OF EFFECTS
- DISCUSSION ON MITIGATION

NEXT STEPS



LINCOLN MEMORIAL, WASHINGTON D.C

PROJECT AREA



The purpose of this project is to expand overall interpretive and educational visitor experience at the Lincoln Memorial. Its needed because of current configuration of visitor services and park support facilities are insufficient.

PURPOSE + NEED



Only one elevator to the chamber and its unreliable



Restrooms outdated and require repairs



Egress to restrooms/exhibit space not current with life safety codes



Chamber bookstore too small

CURRENT CONDITIONS



Memorial designed by Henry Bacon and sculpture created by Daniel Chester French;

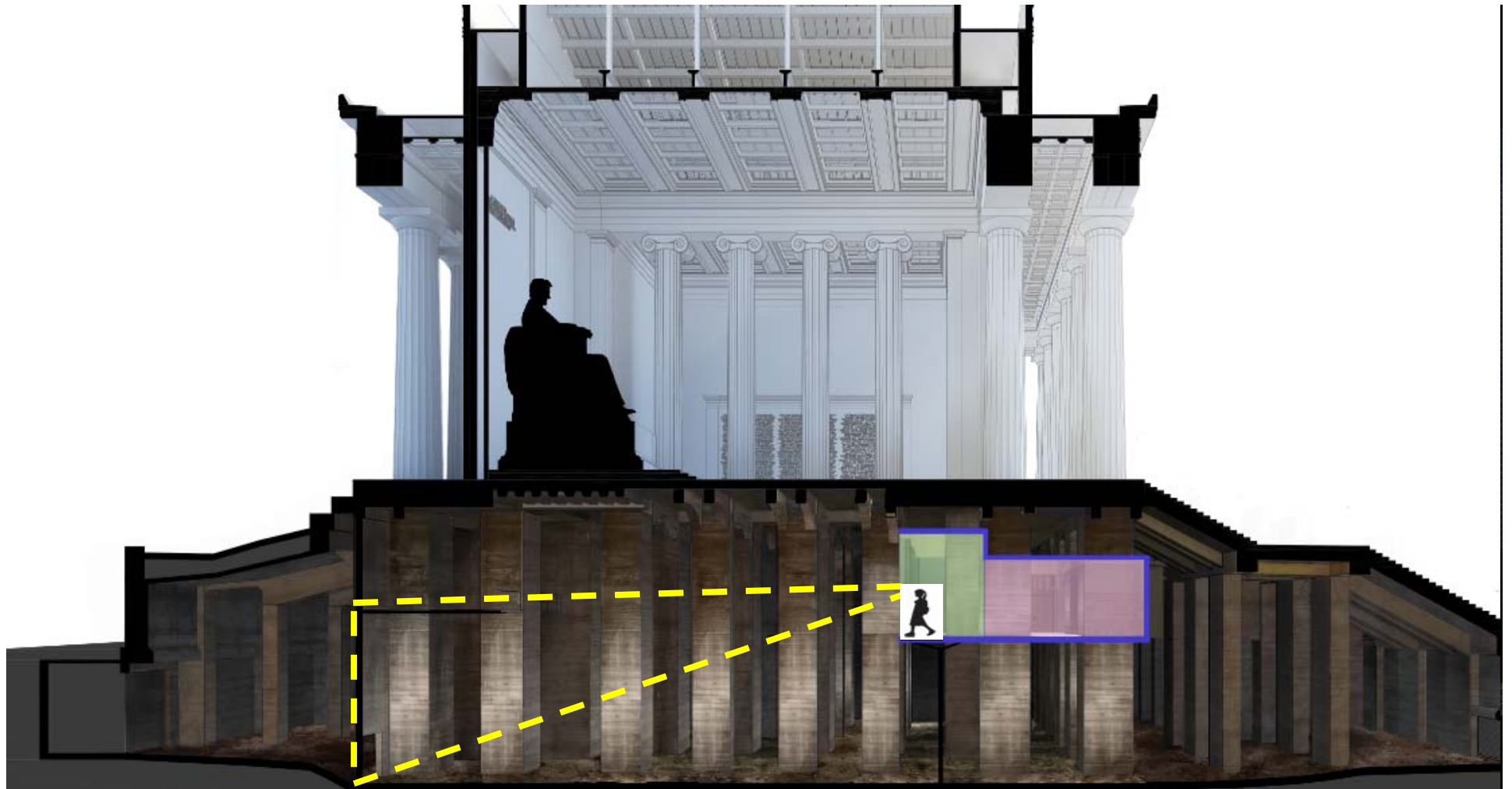
Dedicated in 1922 in the style of an ancient Greek temple;

Located on a site identified by the McMillan Commission in its 1901-1902 plan for Washington;

Prominent setting for events such as Marian Anderson's Easter Sunday concert (1939) and MLK's "I Have a Dream" speech (1963).

LINCOLN MEMORIAL

HISTORICAL OVERVIEW



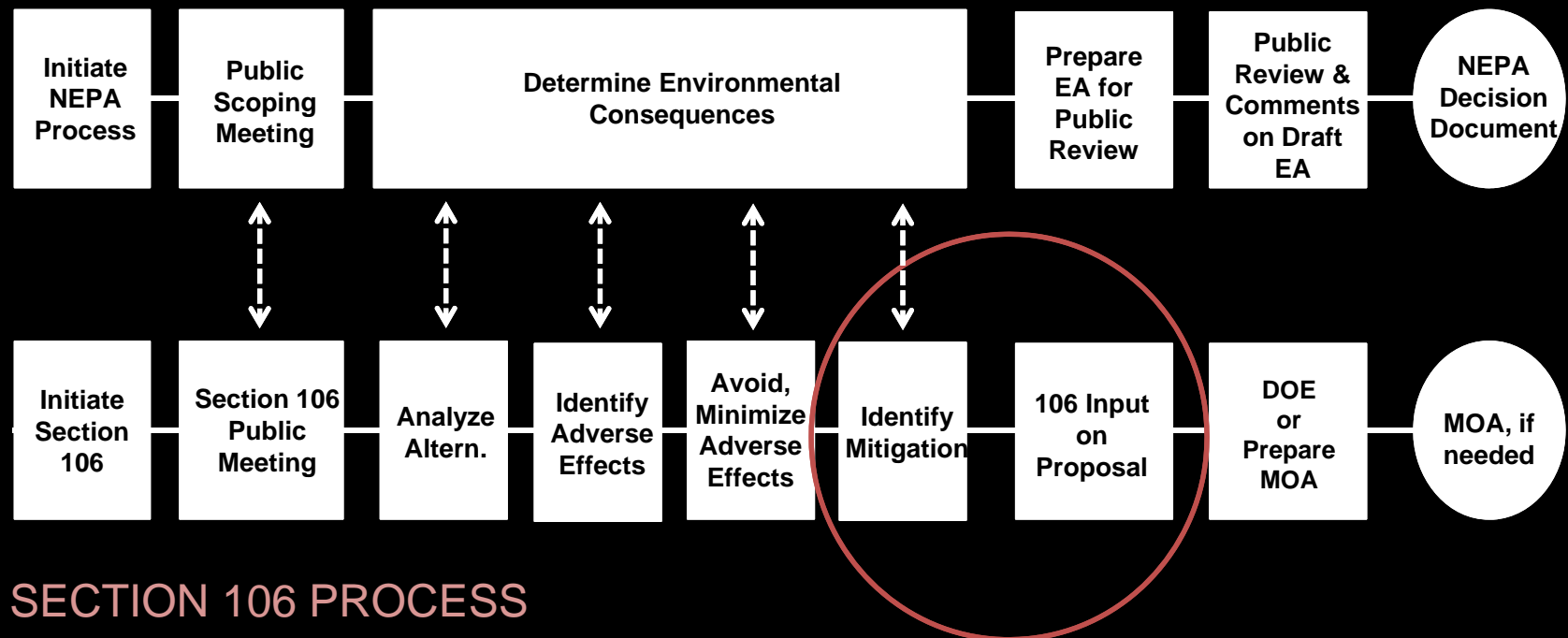
HISTORICAL OVERVIEW



HISTORICAL OVERVIEW



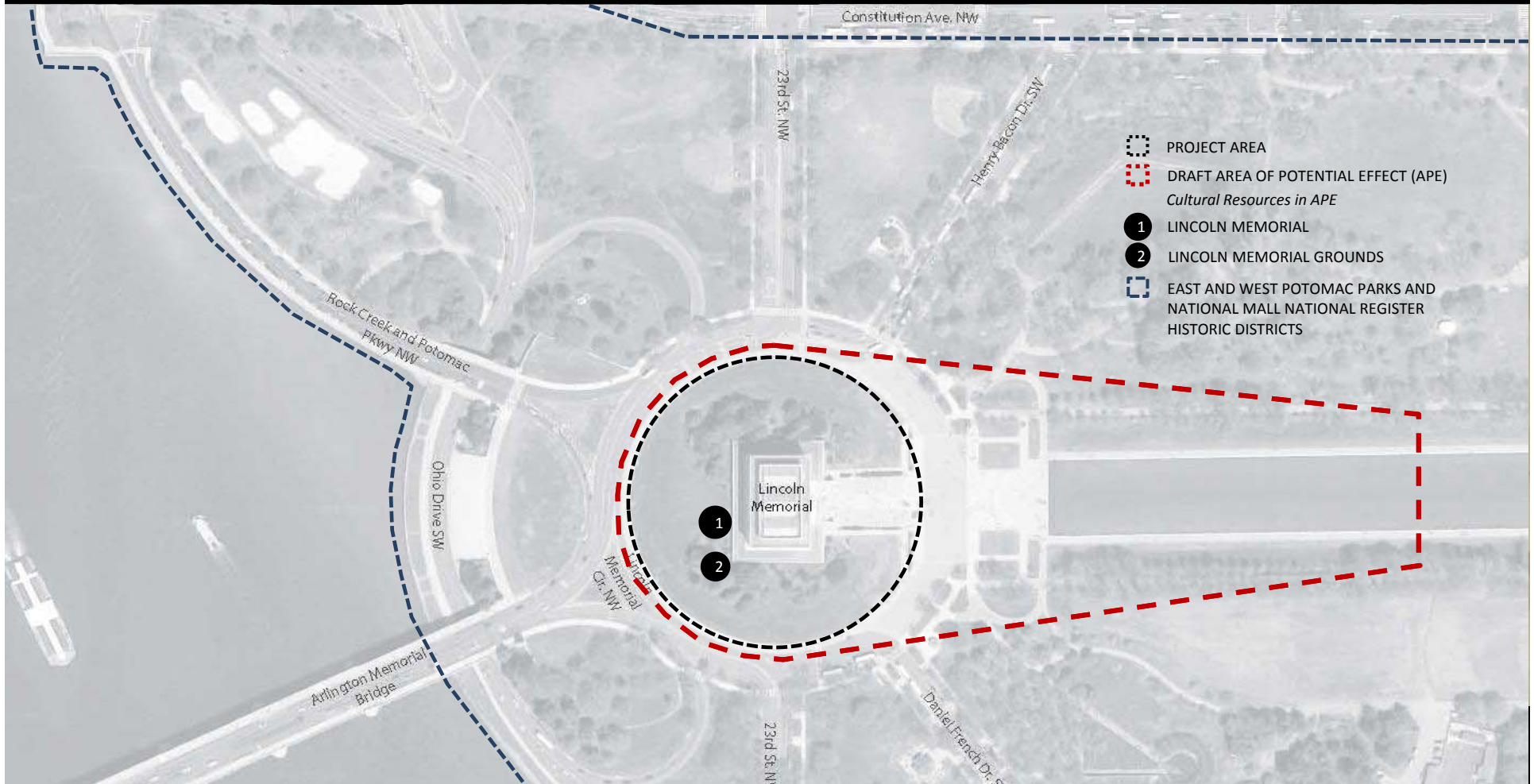
NEPA PROCESS



SECTION 106 PROCESS

- Public Scoping Meeting 6.27.17; EA released for comment (2/5-3/7);
- SHPO and Tribal Section 106 Consultation Initiated on 3.17.17 and 2.15.18

SEC. 106 UPDATE



AREA OF POTENTIAL EFFECT (APE)



Based on the findings of the Historic Structures Assessment report (2016):

- Memorial exterior (including stylobate, colonnade, entablature, exterior decorations);
- Memorial interior (including statuary chamber and rooms,
- Chamber roof and skylight chamber;
- Approachway and terrace;
- Bronze doors in raised terrace retaining wall;
- Lower and upper steps;
- North and south tripods;
- Raised terrace;
- Undercroft (beneath statuary Chamber)

Lincoln Memorial, following completion of reflecting pool , May 1923 (LOC)

CONTRIBUTING FEATURES



Based on the findings of the Historic Structures Assessment report (2016):

- Upper and lower roof materials
- North and south walkways and north and south plazas;
- Undercroft (beneath approachway and raised Terrace).

NON-CONTRIBUTING FEATURES

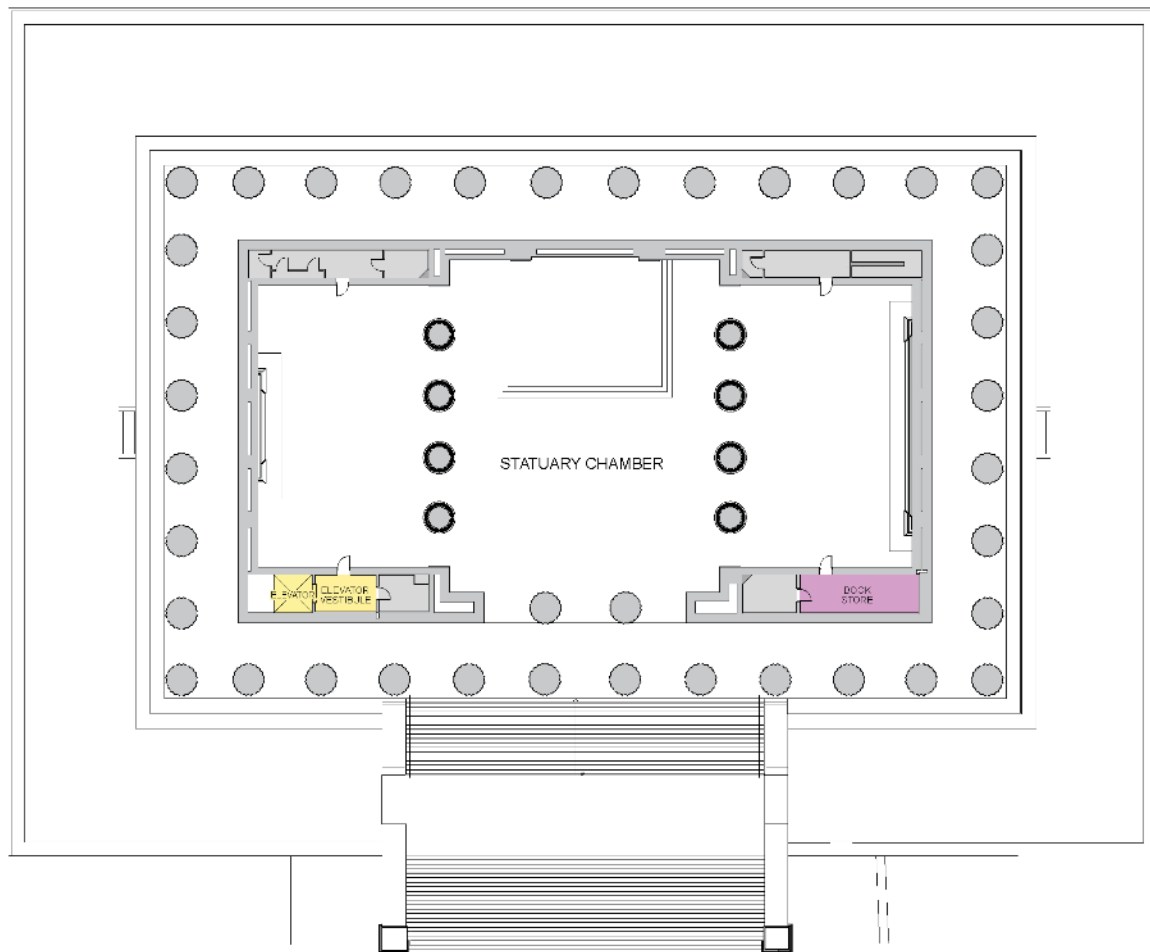


ALTERNATIVES

ALTERNATIVE A- NO ACTION

ALTERNATIVE B-PROPOSED ACTION

ALTERNATIVE C- IMPROVE EXISTING



LEGEND

RETAIL

CIRCULATION

RESTROOMS

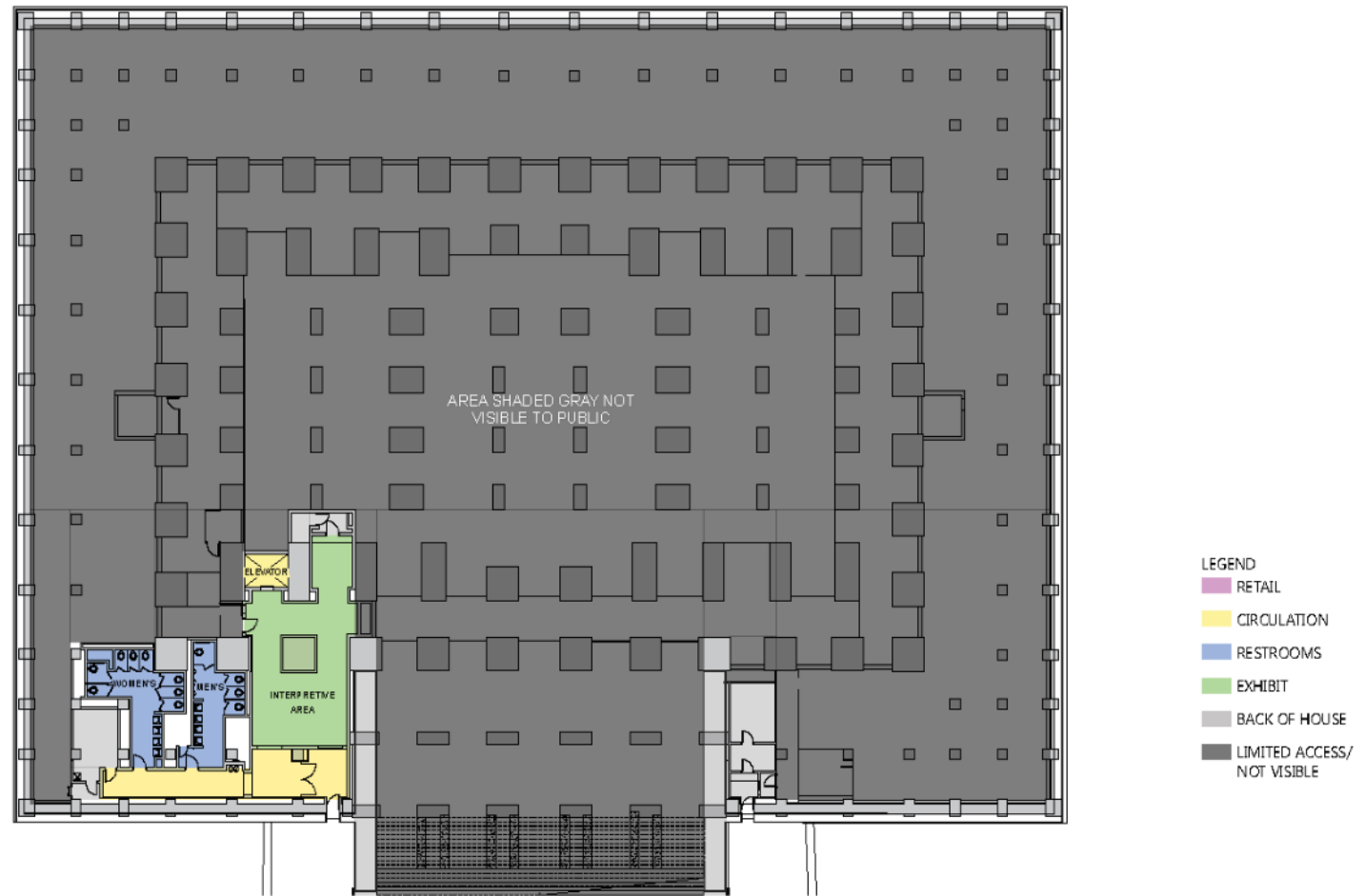
EXHIBIT

BACK OF HOUSE

LIMITED ACCESS/
NOT VISIBLE

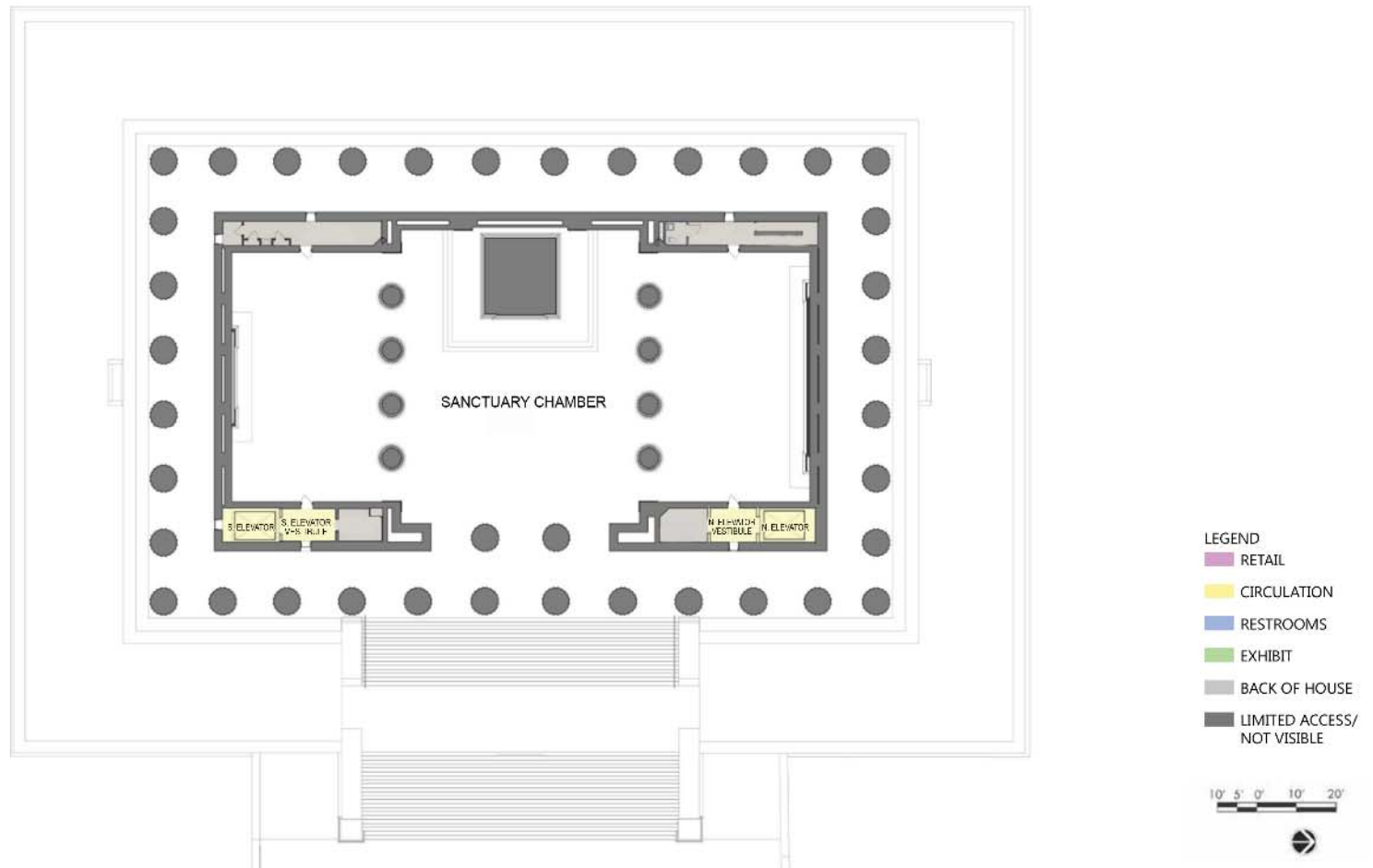
- No changes in egress; single 36" door connects to exhibit level
- No changes in the existing interpretive area and restrooms
- No views of the undercroft
- Single outdated elevator remains
- Retain existing retail area, USPP office, staff breakroom, single elevator lobby, and janitor's closet

NO ACTION
ALT. A



- No changes in egress; single 36" door connects to exhibit level
- No changes in the existing interpretive area and restrooms
- No views of the undercroft
- Single outdated elevator remains
- Retain existing retail area, USPP office, staff breakroom, single elevator lobby, and janitor's closet

NO ACTION
ALT. A



- Improved egress from exhibit level; south and north doors enlarged to 72" (both connect to exhibit level)
- Exhibit level expanded for interpretive space, additional restrooms, new retail area
- Curtain wall provides views of the undercroft
- South elevator renovated and updated, new elevator added in the north

PROPOSED ACTION

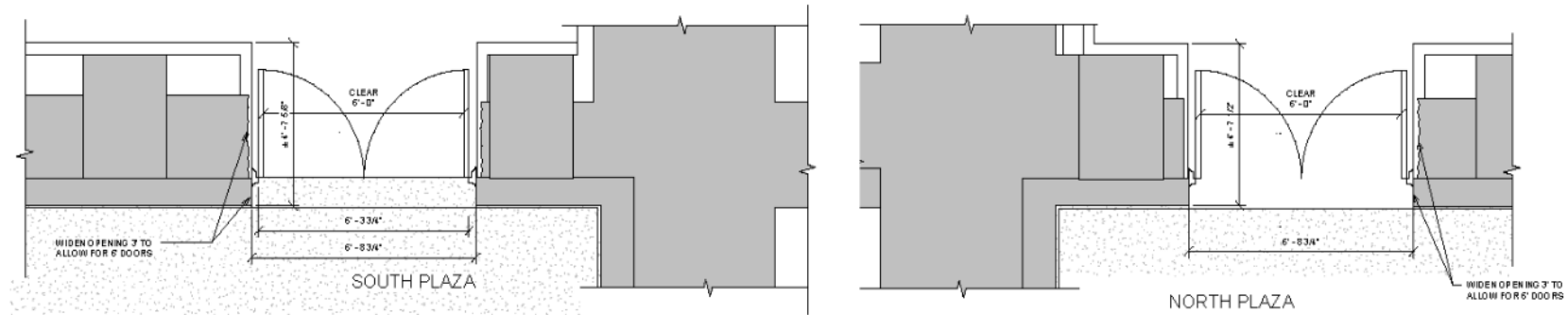
ALT. B



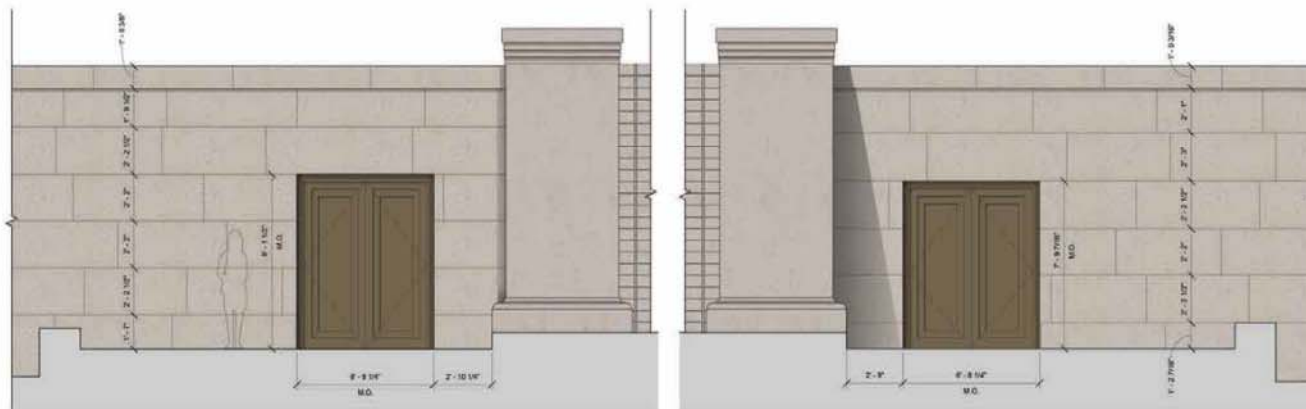
- Improved egress from exhibit level; south and north doors enlarged to 72" (both connect to exhibit level)
- Exhibit level expanded for interpretive space, additional restrooms, new retail area
- Curtain wall provides views of the undercroft
- South elevator renovated and updated, new elevator added in the north

PROPOSED ACTION

ALT. B



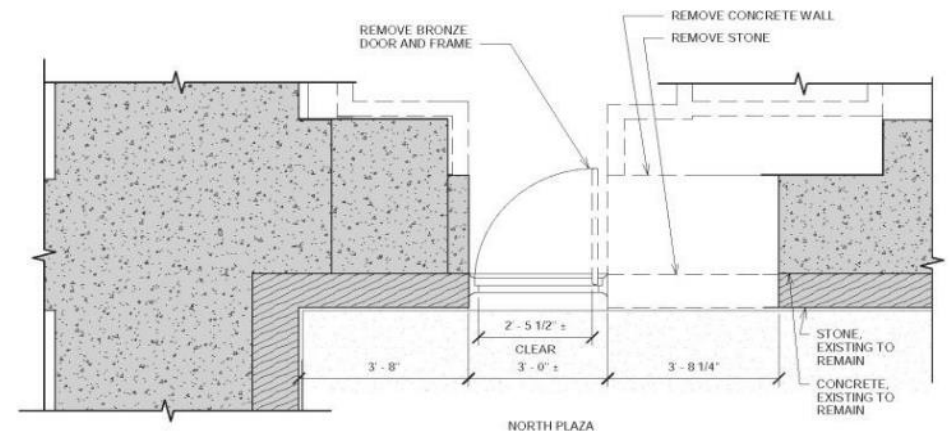
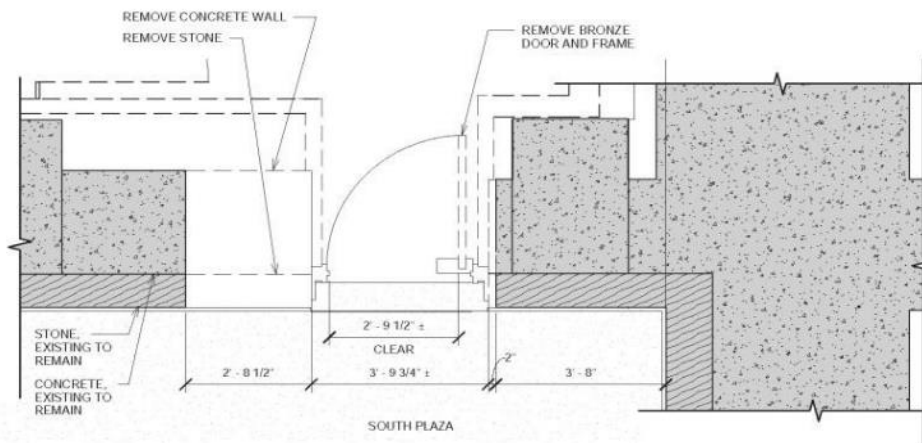
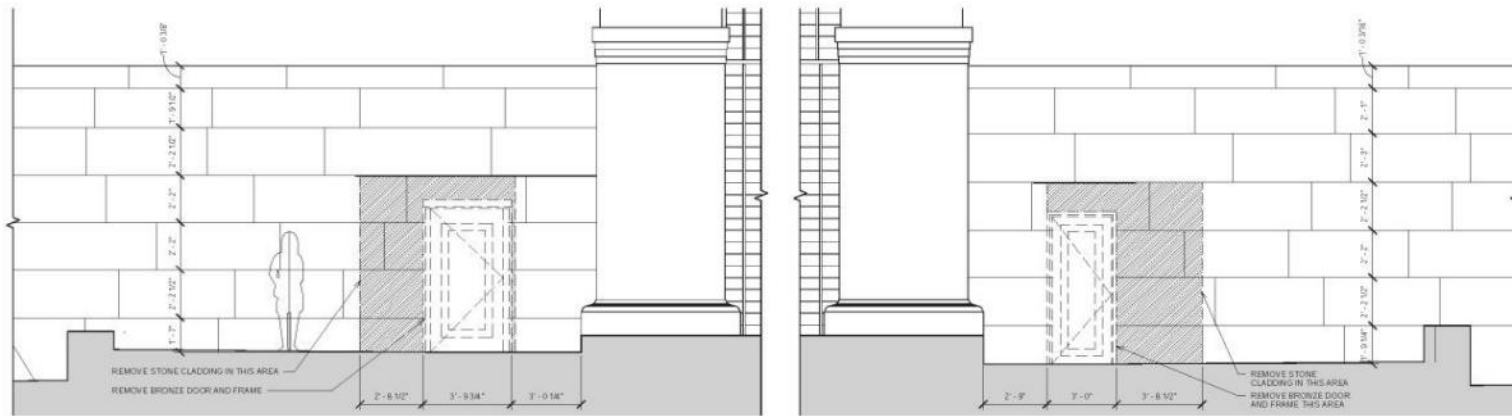
Plan View



East Elevation

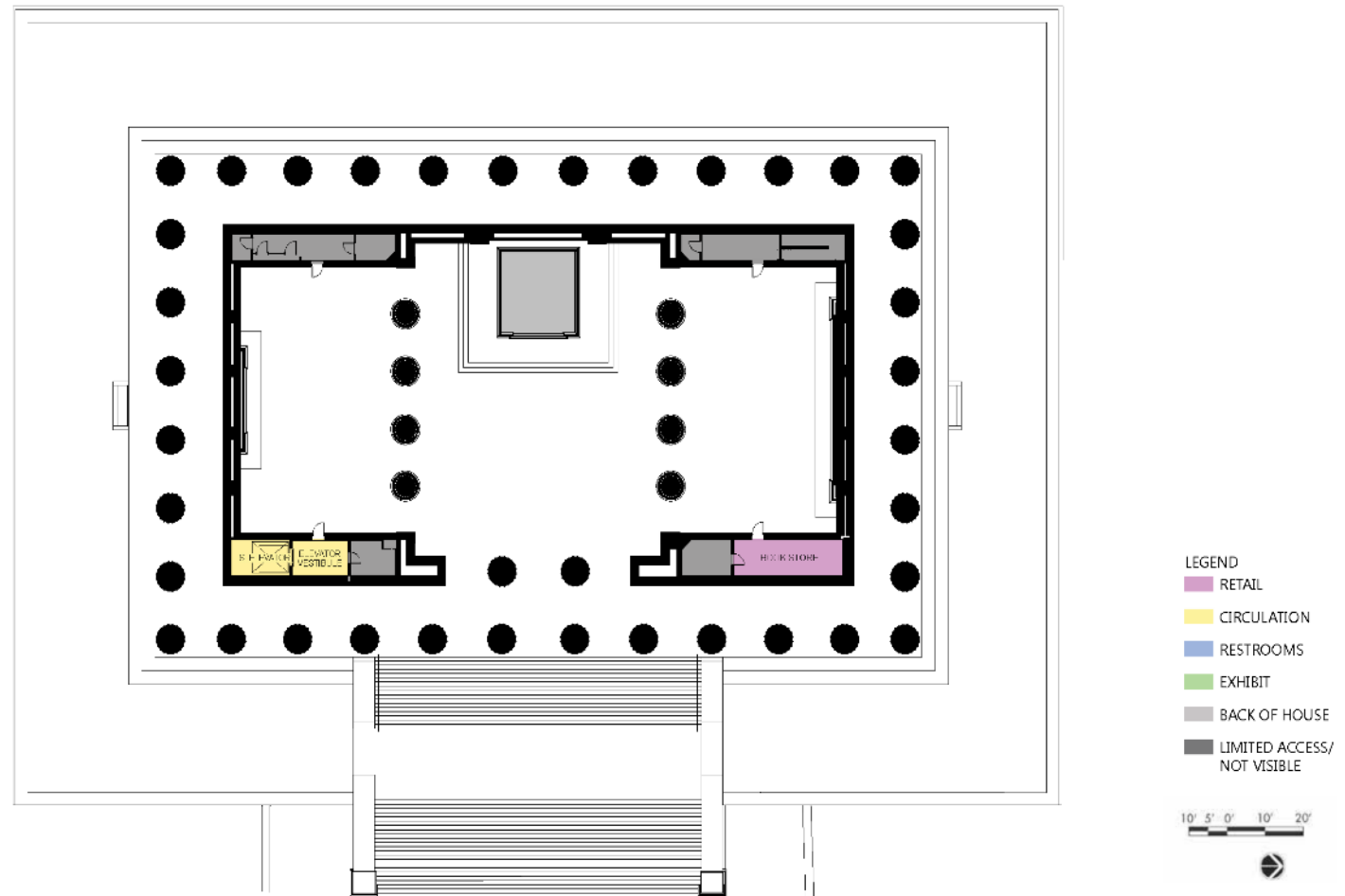
- Improved egress from exhibit level; south and north doors enlarged to 72" (both connect to exhibit level)
- Exhibit level expanded for interpretive space, additional restrooms, new retail area
- Curtain wall provides views of the undercroft
- South elevator renovated and updated, new elevator added in the north

PROPOSED ACTION
ALT. B



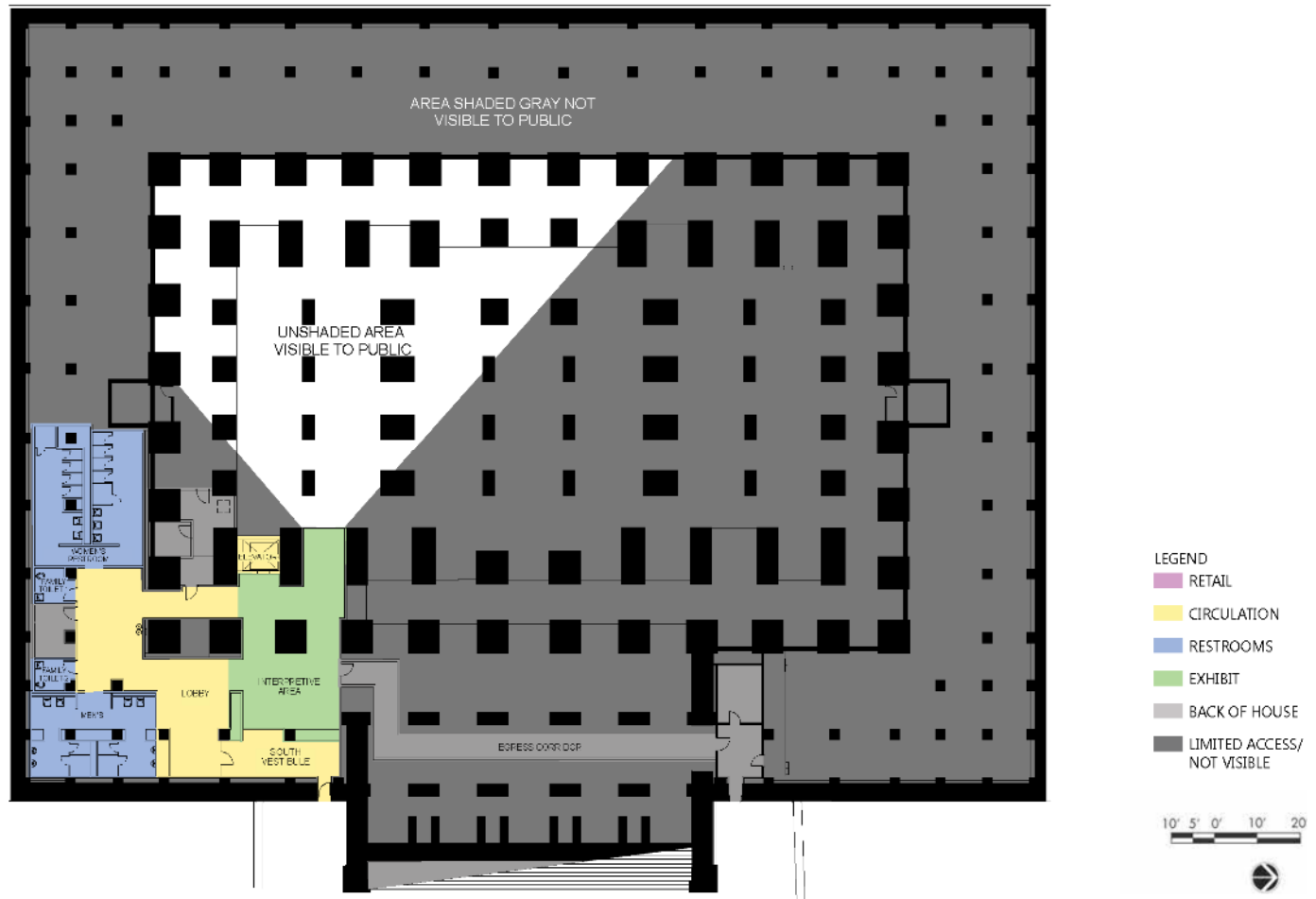
- Improved egress from exhibit level; south and north doors enlarged to 72" (both connect to exhibit level)
- Exhibit level expanded for interpretive space, additional restrooms, new retail area
- Curtain wall provides views of the undercroft
- South elevator renovated and updated, new elevator added in the north

PROPOSED ACTION
ALT. B



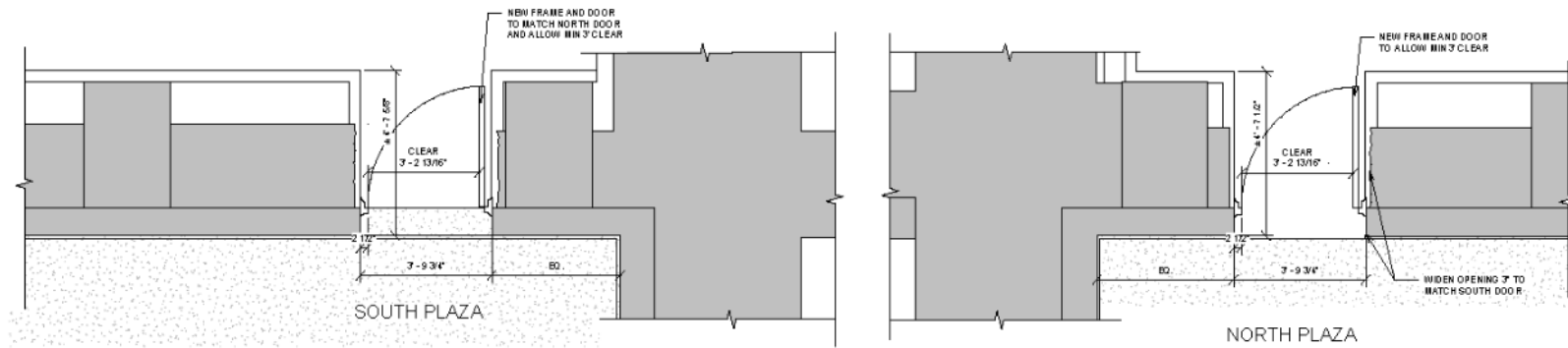
- Slightly improved egress from exhibit level; north doors widened by 5" and connected to public space on exhibit level for 2nd egress point
- Modest changes in the existing interpretive area and additional restrooms
- Picture window into the undercroft
- Retail space remains as is, no second elevator

IMPROVE EXISTING
ALT. C

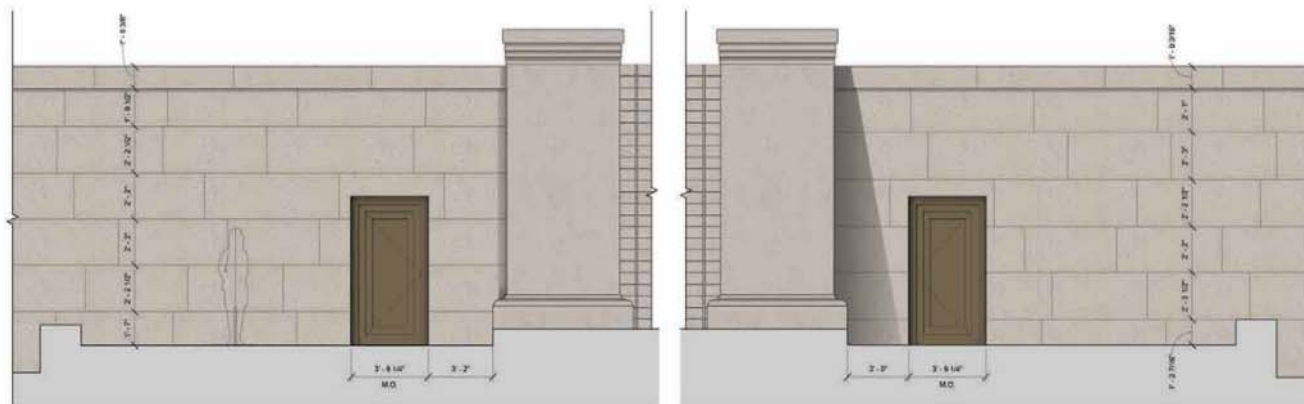


- Slightly improved egress from exhibit level; north doors widened by 5" and connected to public space on exhibit level for 2nd egress point
- Modest changes in the existing interpretive area and additional restrooms
- Picture window into the undercroft
- Retail space remains as is, no second elevator

IMPROVE EXISTING ALT. C



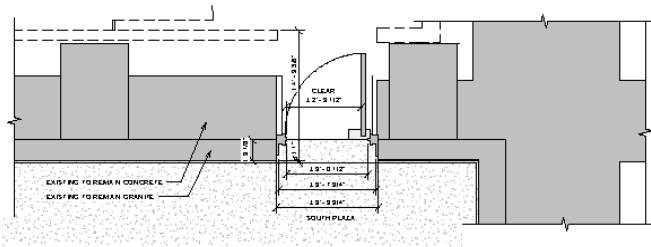
Plan View



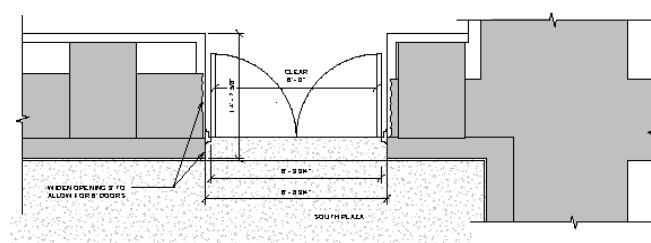
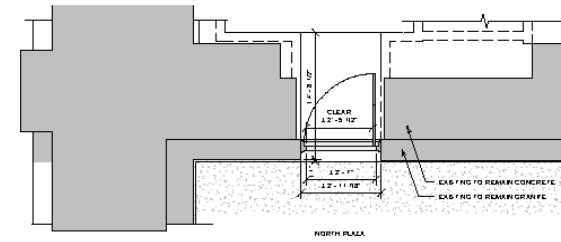
East Elevation

- Slightly improved egress from exhibit level; north doors widened by 5" and connected to public space on exhibit level for 2nd egress point
- Modest changes in the existing interpretive area and additional restrooms
- Picture window into the undercroft
- Retail space remains as is, no second elevator

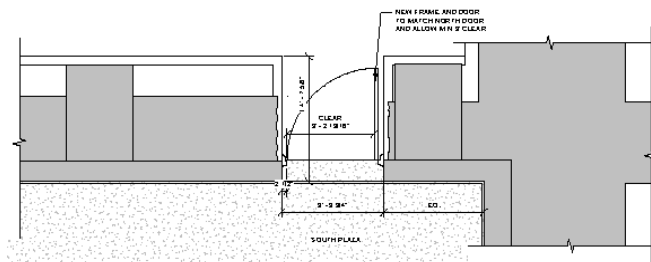
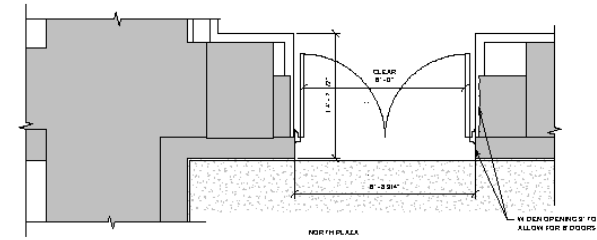
IMPROVE EXISTING
ALT. C



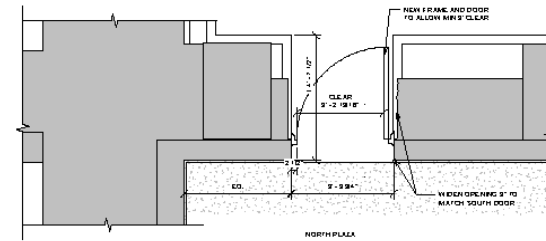
Alternative A: No Action



Alternative B: NPS Preferred
- 72" Door Expansion



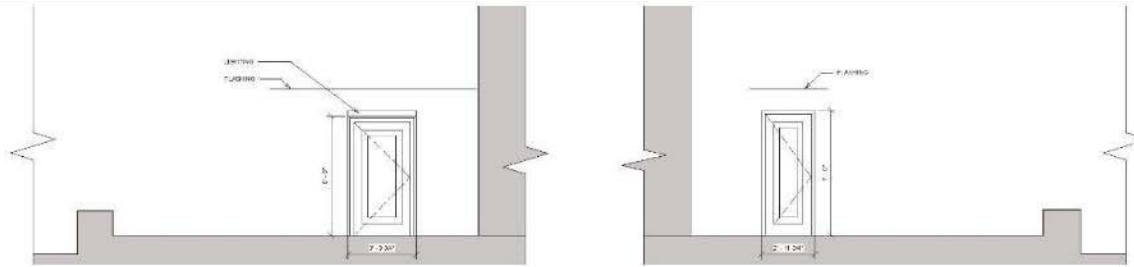
Alternative C: Improve Existing
- 36" Door Expansion



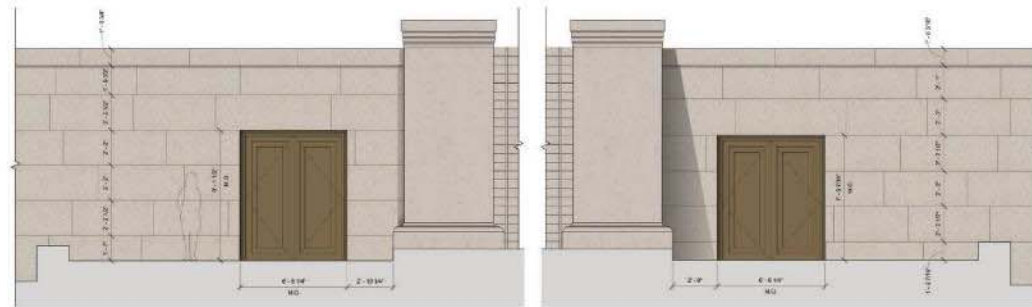
Lincoln Memorial Rehabilitation
Environmental Assessment

FIGURE 16
Exterior Doors Comparison, Plan View

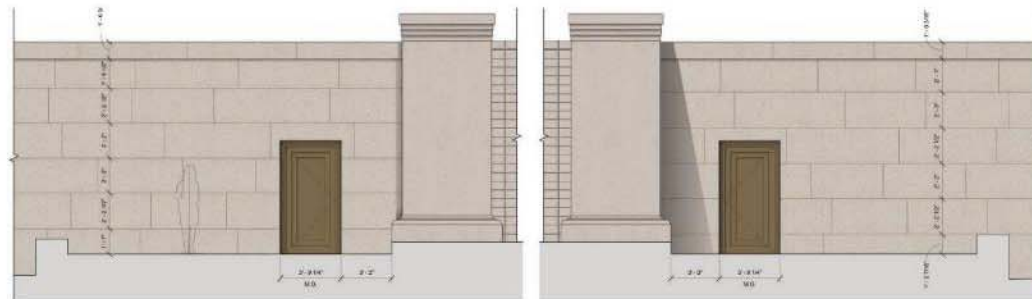
COMPARISONS



Alternative A: No Action



Alternative B: NPS Preferred
- 72" Door Expansion



Alternative C: Improve Existing
- 36" Door Expansion

Lincoln Memorial Rehabilitation
Environmental Assessment

FIGURE 17
Exterior Doors Comparison, East Elevation

COMPARISONS



BRONZE DOORS, EAST ELEVATION

ALT. A



BRONZE DOORS, EAST ELEVATION

ALT. B



BRONZE DOORS, EAST ELEVATION

ALT. C

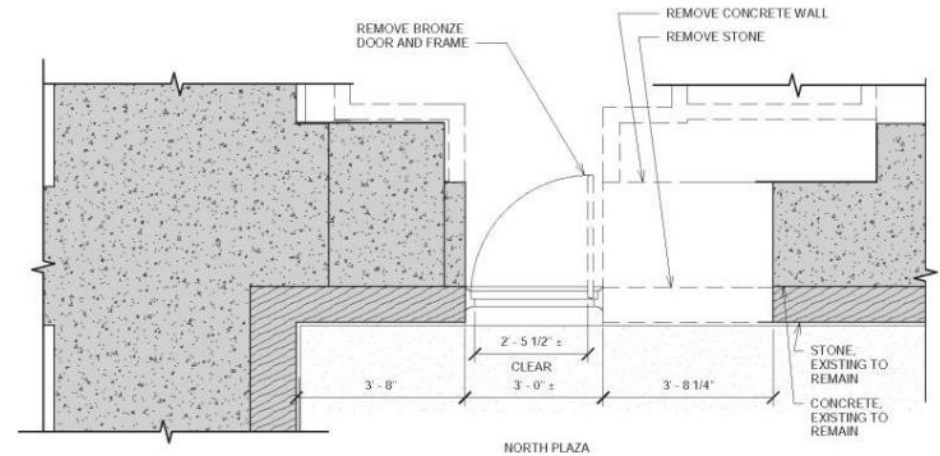
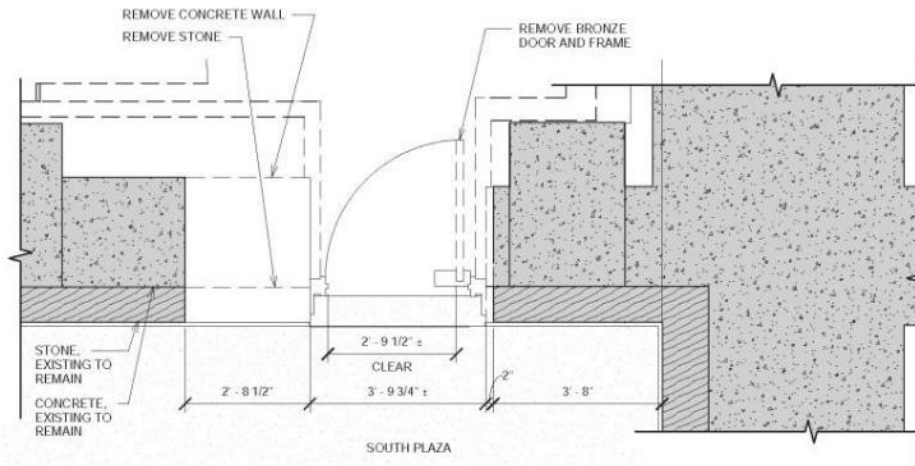
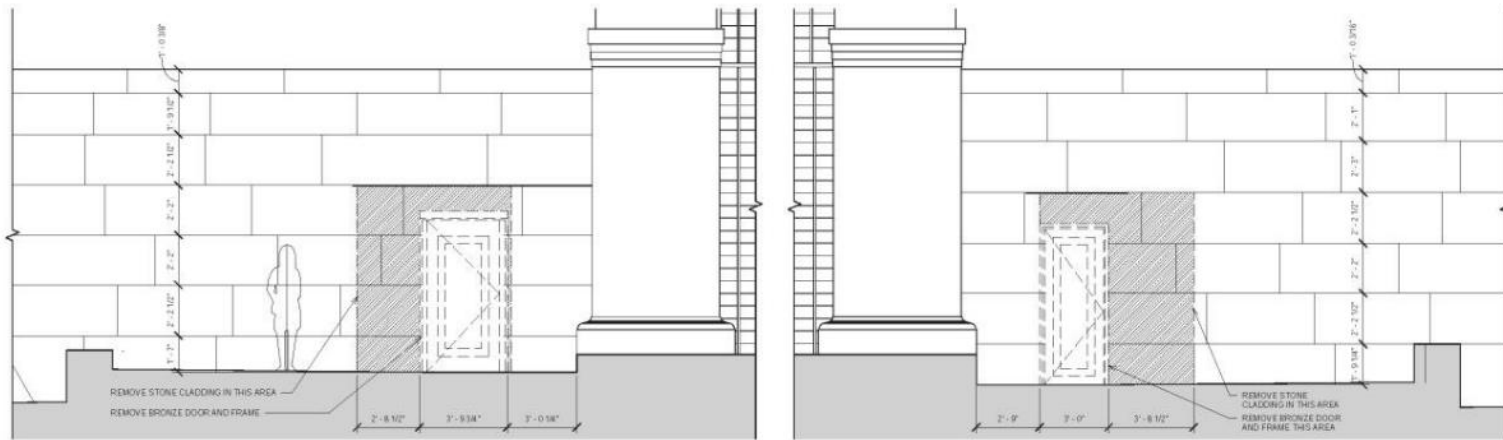
Adverse effect on Memorial Exterior

- The doors on the east façade of the Lincoln Memorial would be replaced with larger doors of a sympathetic design.
- A change in appearance of the main façade would occur and a loss of historic masonry would be required for the new doors

Adverse effect on Memorial Interior

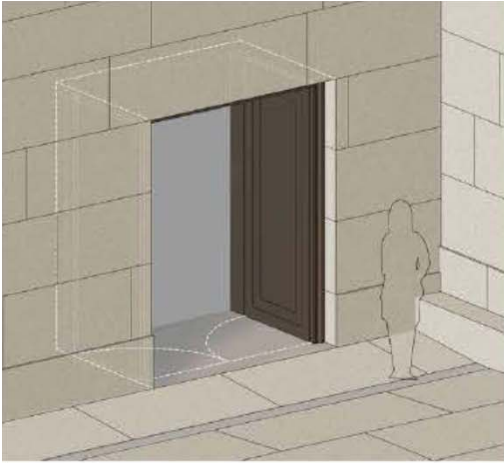
- Removal of historic material on the chamber level for new elevator and improved mechanical systems. This loss of material would be in areas not visible to the public.
- Removal and replacement of historic material would be required on the exhibit level for new structural elements. The expanded exhibit level would result in a change in appearance of the undercroft and the introduction of modern materials.
- Some historic character of the undercroft would be diminished with these changes. However, most of the changes would be concentrated within the non-character-defining raised terrace area.

EFFECTS-ALT B. (Preferred)



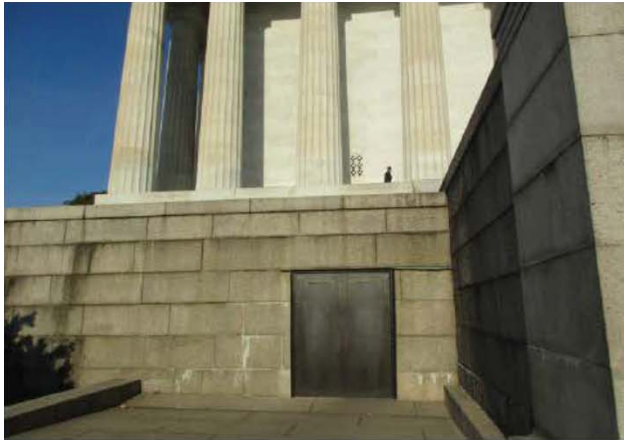
ALT B: 72' OPENING (2x36") DEMO PLAN, EAST ELEVATION

EFFECTS-ALT B. (Preferred)



72' OPENING (2x36") PHOTO SIMULATION, EAST ELEVATION

EFFECTS-ALT B. (Preferred)



1 - SOUTH UNDERCROFT DOOR



2 - NORTH UNDERCROFT DOOR



3 - VIEW FROM APPROACHWAY

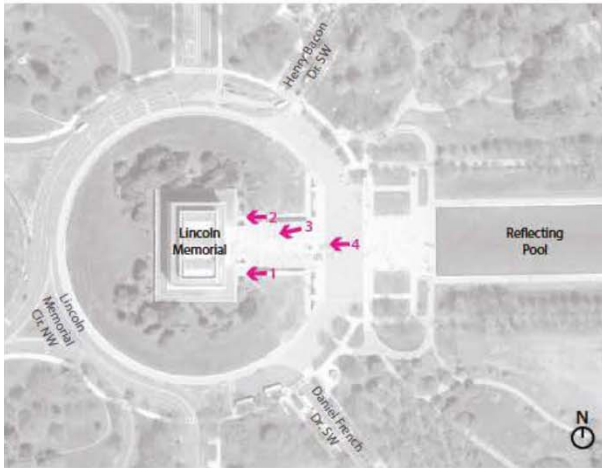


PHOTO KEY PLAN



4 - VIEW FROM MEMORIAL CIRCLE

72' OPENING (2x36") SIMULATION CLOSED, EAST ELEVATION

EFFECTS-ALT B. (Preferred)



1 - SOUTH UNDERCROFT DOOR



2 - NORTH UNDERCROFT DOOR



3 - VIEW FROM APPROACHWAY

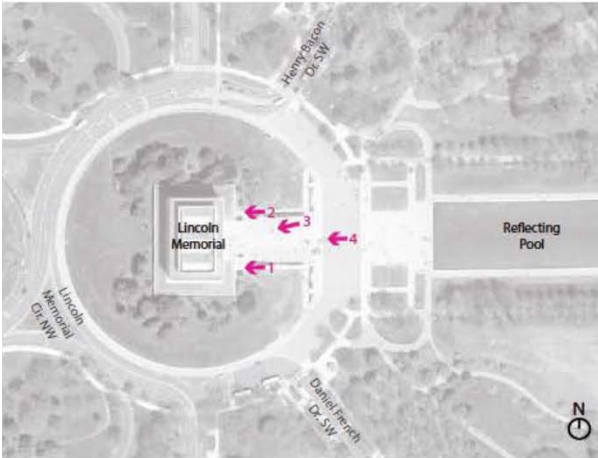


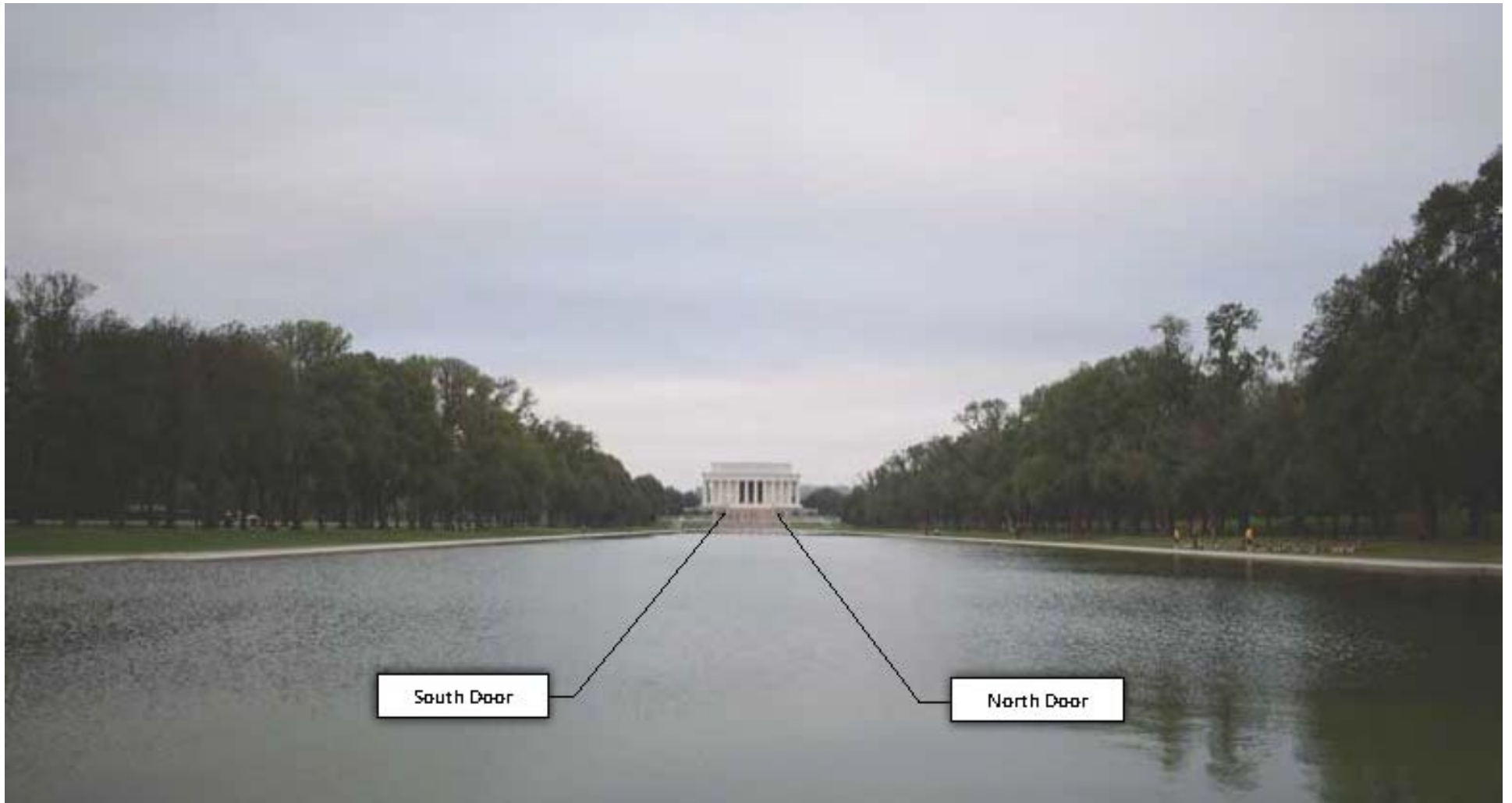
PHOTO KEY PLAN



4 - VIEW FROM MEMORIAL CIRCLE

72' OPENING (2x36") SIMULATION OPENED, EAST ELEVATION

EFFECTS-ALT B. (Preferred)



72' OPENING (2x36") SIMULATION OPENED, EAST ELEVATION

EFFECTS-ALT B. (Preferred)



72' OPENING (2x36") SIMULATION OPENED, EAST ELEVATION

EFFECTS-ALT B. (Preferred)



MITIGATION OPTIONS

- POTENTIALLY ADD REMOVED STONE & BRONZE DOOR TO MUSEUM COLLECTION
 - UPDATE HABS DOCUMENTATION
- PREPARATION OF INTERPRETATIVE MATERIALS ON MEMORIAL DEVELOPMENT
 - CONSERVE AND PROTECT HISTORIC GRAFFITI
 - COMPLETE CONDITION ASSESSMENT OF GUERIN MURALS
- HISTORIC STRUCTURE/LANDSCAPE PRESERVATION MAINTENANCE PLAN



OPPORTUNITIES TO COMMENT

Please submit comments at:

www.parkplanning.nps.gov/LincolnMemorialRehab

or mail to:

ATTN: Lincoln Memorial Rehabilitation
Superintendent, National Mall and Memorial Parks
900 Ohio Drive, SW Washington, DC 20024