

Desert View Inter-Tribal Cultural Heritage Site Plan / Environmental Assessment

Public Scoping | February - March 2018

National Park Service
U.S. Department of the Interior
Grand Canyon National Park



WELCOME

AGENDA

4:00 - 4:30 Sign in and Open House

4:30 - 5:00 NPS Presentation

5:00 - 6:00 Open House

"We share Desert View as a symbol to bond the peoples of yesterday, today, and tomorrow. The Watchtower serves as a connection to embrace the heartbeats of our peoples and visitors far and wide with the heartbeat of the canyon...We are still here."

- Inter-tribal Advisory Council Vision for Desert View



Desert View Inter-Tribal Cultural Heritage Site Plan / Environmental Assessment

Public Scoping | February - March 2018

National Park Service
U.S. Department of the Interior
Grand Canyon National Park



WELCOME

AGENDA

6:00 - 6:30 Sign in and Open House

6:30 - 7:00 NPS Presentation

7:00 - 8:00 Open House

"We share Desert View as a symbol to bond the peoples of yesterday, today, and tomorrow. The Watchtower serves as a connection to embrace the heartbeats of our peoples and visitors far and wide with the heartbeat of the canyon...We are still here."

- Inter-tribal Advisory Council Vision for Desert View





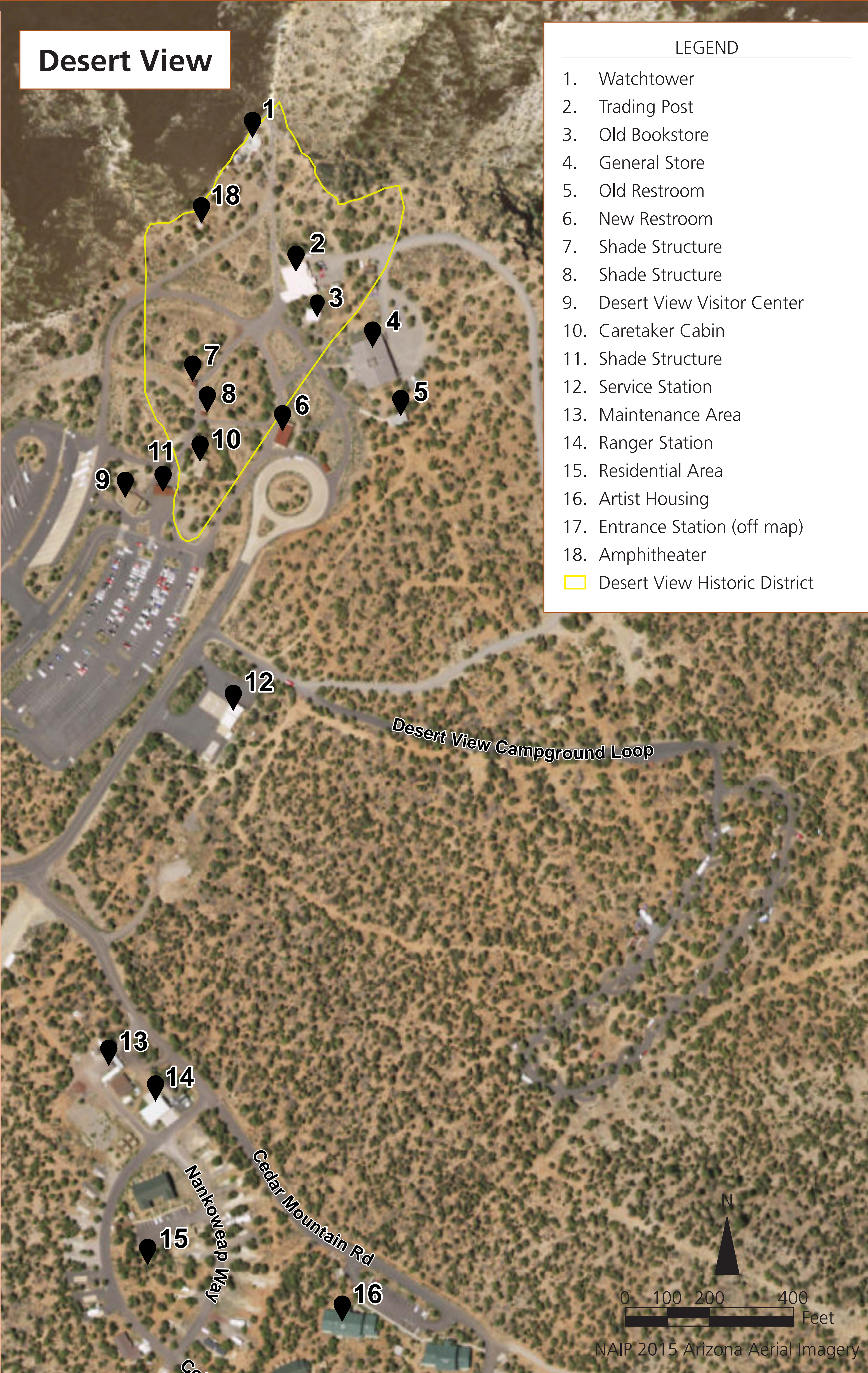
PURPOSE AND NEED FOR ACTION

The purpose of this project is to increase opportunities for first-voice tribal interpretation, improve visitor orientation, and enhance the overall visitor experience at Desert View in Grand Canyon National Park.

Specifically, action is needed at this time to:

- Address visitor orientation issues at Desert View related to only-partial implementation of a 2002 plan,
- Proactively respond to increasing visitation at the site, and,
- Embrace a unique opportunity to partner with tribes.

This proposed action also provides the National Park Service (NPS) with the opportunity to implement the Native American Tourism and Improving Visitor Experience (NATIVE) Act whose purpose is “to enhance and integrate Native American tourism, empower Native American communities, increase coordination and collaboration between Federal tourism assets, and expand heritage and cultural tourism opportunities in the United States” (PL 114-221).





OBJECTIVES



FIRST-VOICE TRIBAL INTERPRETATION

- Promote knowledge of and appreciation for the diverse cultures of tribes associated with the Grand Canyon within all NPS activities at Desert View.
- Integrate first-voice tribal voices, history, and cultural perspectives into park interpretive programs.
- Increase the number and variety of cultural and educational programs and demonstrations, special events and exhibits, and opportunities for personal interactions with tribal representatives.
- Provide opportunities for associated tribes to share information related to tourism on tribal lands with visitors to Desert View in order to encourage further exploration of cultures beyond the boundaries of GCNP.

VISITOR ORIENTATION

- Provide visitors, upon arrival, with clear visual orientation to the site, including an understanding of the significance of Desert View and the Grand Canyon.



INFRASTRUCTURE

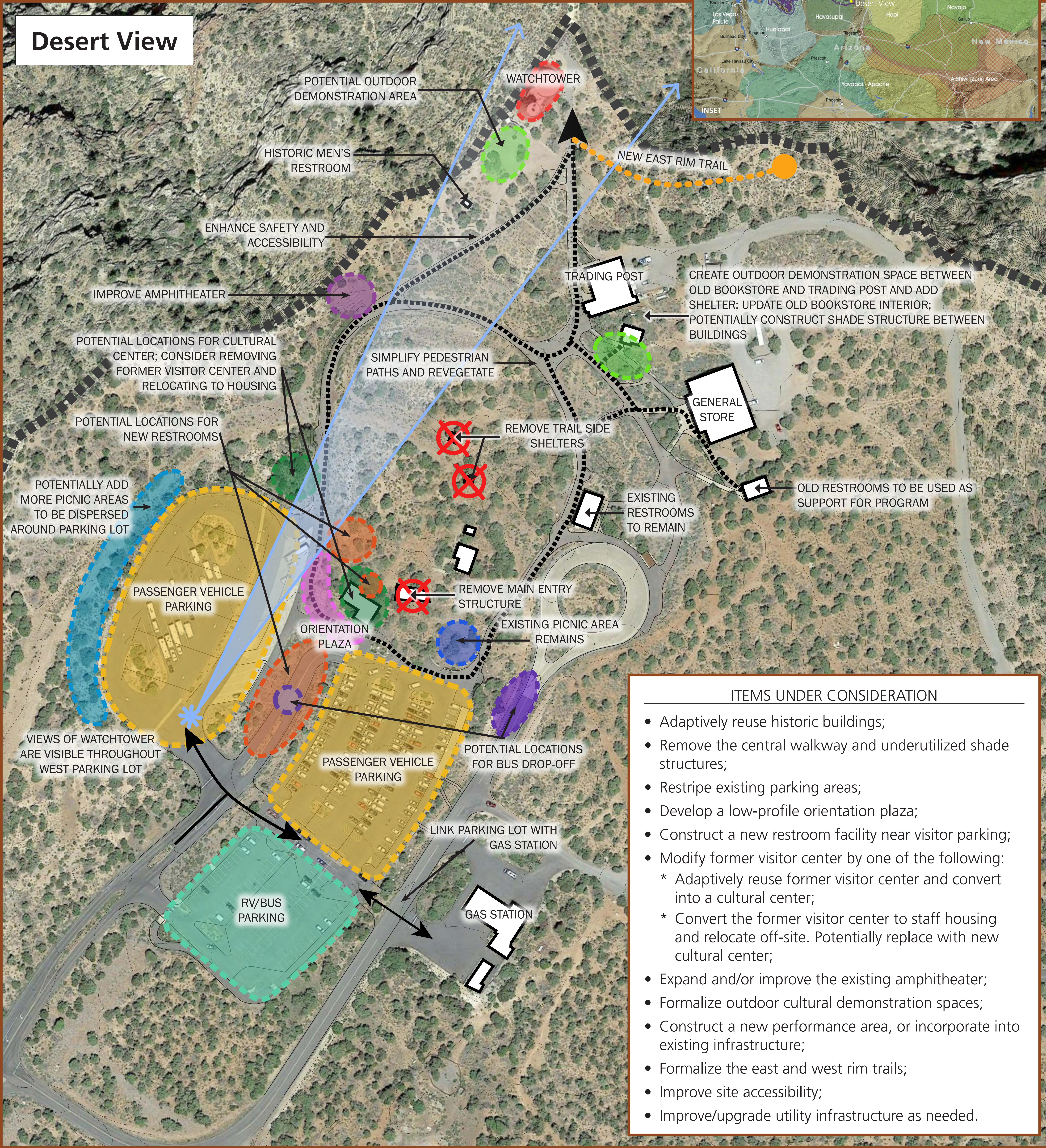
- Appropriately scale the modern built environment to align with operational needs, allowing for the greatest flexibility to address anticipated programming on site.
- Give visual and architectural deference to the Desert View Watchtower, a National Historic Landmark, and its associated cultural landscape in all modern design features of the site.
- Improve site accessibility, including to the main Watchtower entrance.
- Expand and/or improve visitor facilities and associated infrastructure to accommodate a projected increase in visitation.
- Improve the environmental sustainability of site infrastructure and operations.

Desert View Inter-Tribal Cultural Heritage Site Plan / Environmental Assessment

Public Scoping | February - March 2018

Map of Grand Canyon's traditionally associated tribes, with Desert View. Depicts each tribe's range of cultural homeland relative to Grand Canyon.

PROPOSED ACTION



NATIONAL ENVIRONMENTAL POLICY ACT (NEPA) PROCESS

February 2018	Public Scoping and Public Scoping Meetings	WE ARE HERE
March 2018	National Park Service (NPS) Reviews Public Scoping Comments	
Summer 2018	Develop alternatives, analyze impacts, and write Environmental Assessment (EA)	
Fall 2018	EA available for public review and comment/public meetings	
Fall 2018	NPS reviews and analyzes comments, prepares errata	
Winter 2018/2019	NPS issues Decision Document	

HOW TO COMMENT

Submit comments on the proposed plan via the NPS planning website at <http://parkplanning.nps.gov/DesertViewIChS>, in person at public scoping open house events, or write to: Superintendent, Grand Canyon National Park, Attn: Desert View EA, PO Box 129, Grand Canyon, AZ 86023. The preferred method for submitting comments is on the project website listed above. The public scoping period extends from February 5 - March 6, 2018.



Desert View Inter-Tribal Cultural Heritage Site Plan / Environmental Assessment

Public Scoping | February - March 2018

National Park Service
U.S. Department of the Interior
Grand Canyon National Park



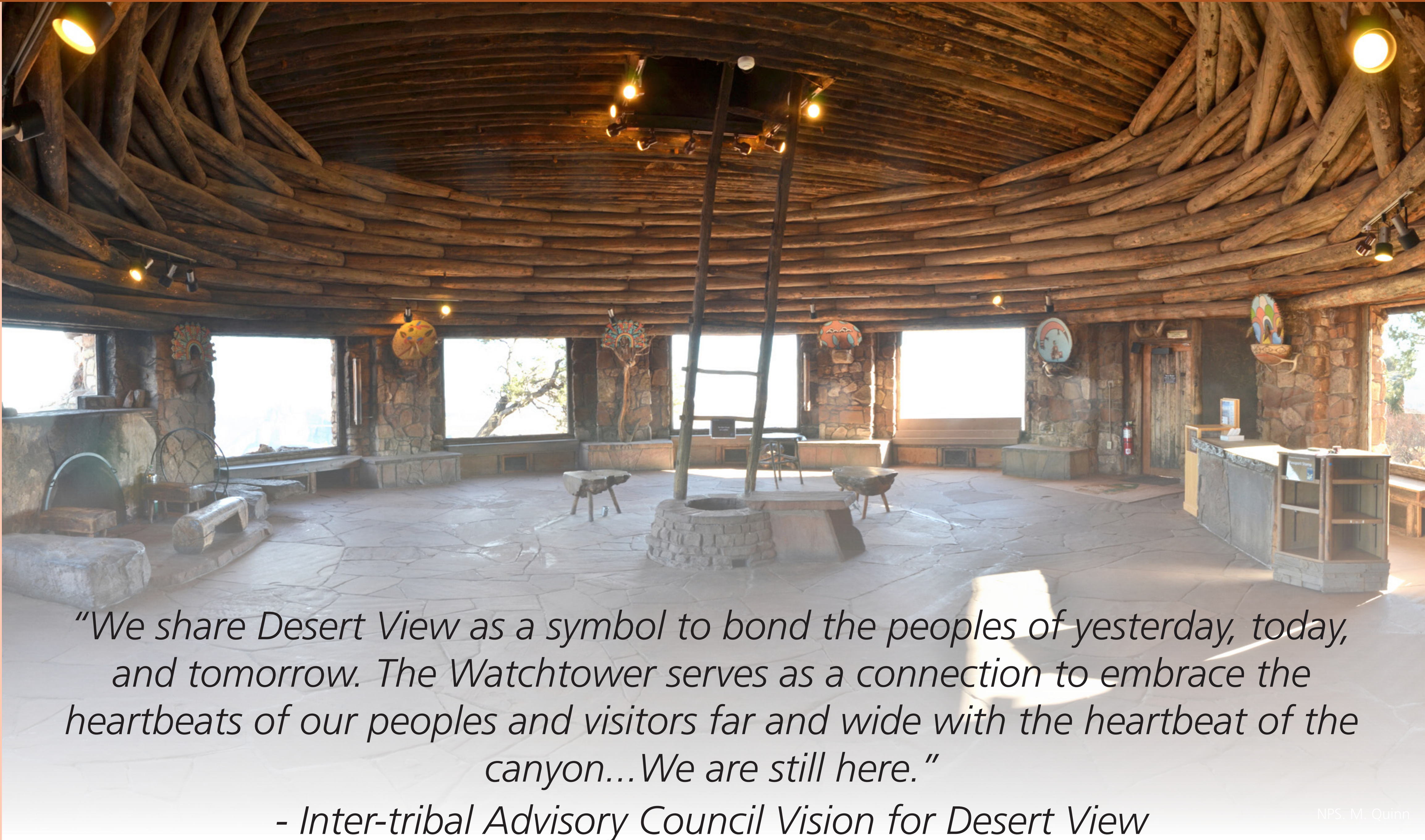
PARTNERSHIPS

In 2013, Grand Canyon National Park established an Inter-tribal Advisory Council (ItAC) comprised of representatives from the park's traditionally associated American Indian tribes and other non-profit partners.

In 2015, the ItAC developed a strategic plan that outlined a collaborative vision between the park and tribal partners to integrate tribal voices, history, and cultural perspectives into park interpretive programs at Desert View. The NPS embraced this vision and prepared a Site Concept Plan for Desert View in 2016 that identified potential onsite improvements and/or modifications to facilities to realize this vision onsite. This Plan / EA builds upon the ItAC strategic plan and Site Concept Plan.

The following partners have helped develop a vision for the Inter-tribal Cultural Heritage Site:

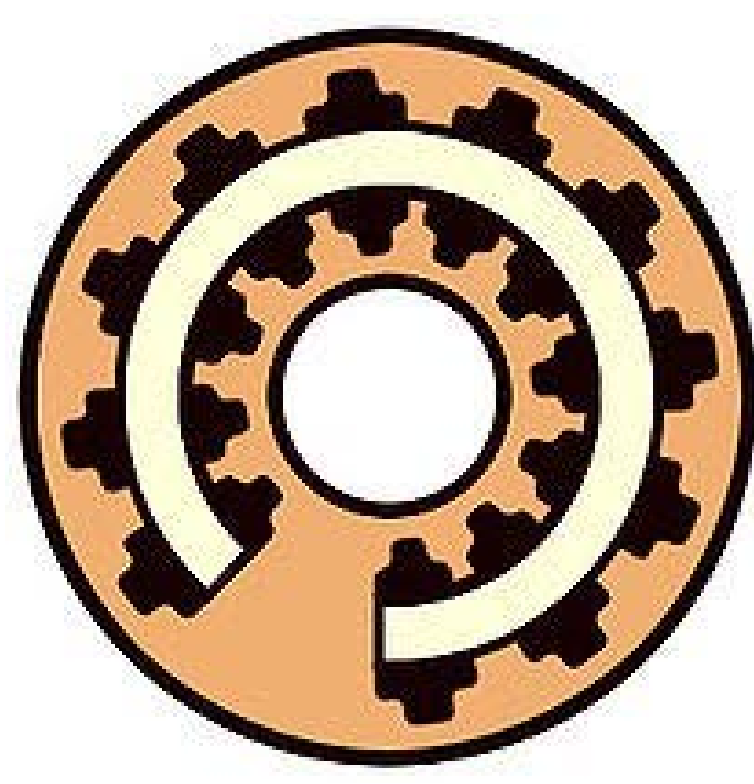
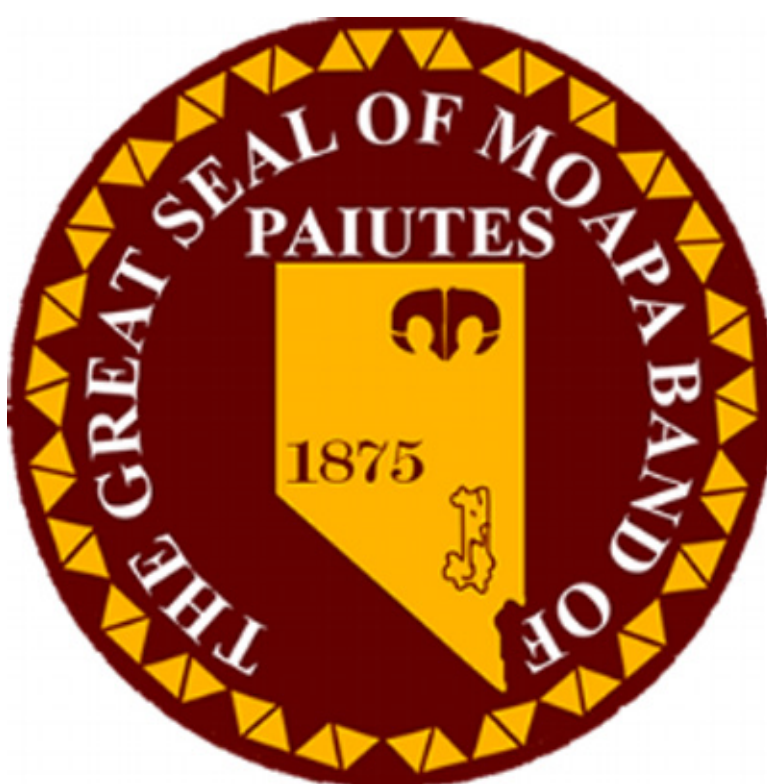
- Representatives from the Kaibab Band of Paiute Indians, Havasupai, Hopi, Hualapai, Navajo, Zuni, and Yavapai-Apache tribes;
- The Grand Canyon Association;
- The American Indian Alaska Native Tourism Association (AIANTA);
- The Bureau of Indian Affairs; and
- Park concessionaires.



"We share Desert View as a symbol to bond the peoples of yesterday, today, and tomorrow. The Watchtower serves as a connection to embrace the heartbeats of our peoples and visitors far and wide with the heartbeat of the canyon... We are still here."

- Inter-tribal Advisory Council Vision for Desert View

NPS M. Quinn



Grand
Canyon
Association



AIANTA
American Indian Alaska
Native
Tourism Association



ANCESTRAL LANDS CONSERVATION CORPS



Since 2015, Grand Canyon National Park has hosted Ancestral Lands Conservation Corps, in partnership with the National Park Service’s Youth Programs Office and Conservation Legacy.



This program engages native youth and young adults in the care and management of natural and cultural resources that are often of great ancestral significance to Grand Canyon’s Traditionally Associated Tribes.



Conservation field crews and interns worked with National Park Service staff throughout the park on projects including trails, vegetation, facilities, archaeology, and interpretive programs.



Desert View Inter-Tribal Cultural Heritage Site Plan / Environmental Assessment

Public Scoping | February - March 2018

National Park Service
U.S. Department of the Interior
Grand Canyon National Park



CULTURAL DEMONSTRATIONS

Grand Canyon National Park and the Inter-tribal Advisory Council, in close partnership with Grand Canyon Association (GCA) and the American Indian Alaska Native Tourism Association (AIANTA), have sustained a Cultural Demonstration program at Desert View since 2014.

Hosted inside the historic Desert View Watchtower, artisans and representatives from each of the park’s 11 Traditionally Associated tribes have provided demonstrations as a way to share their culture and artistry through direct dialogue with Grand Canyon National Park visitors.

Through a generous grant awarded to AIANTA on behalf of the Desert View program by ArtPlace America, and proceeds from GCA bookstores, the National Park Service (NPS) is able to host these demonstrators, provide housing and travel stipends, and a small honorarium as compensation for their work.

The NPS provides these programs to visitors through special management authorities which allow for Native American guests to present traditional and contemporary artistic works to visitors as demonstrations to educate the public about their indigenous cultures.



NPS. M. Quinn



NPS. M. Quinn



NPS. M. Quinn



NPS. M. Quinn