

REHABILITATION OF LINCOLN MEMORIAL

Section 106 Consulting Parties Meeting

21 February 2018





AGENDA

PRESENTATION

- WELCOME + INTRODUCTIONS
- IDENTIFY HISTORIC RESOURCES
 - ALTERNATIVES
 - ASSESSMENT OF EFFECTS
- DISCUSSION ON MITIGATION

NEXT STEPS



LINCOLN MEMORIAL, WASHINGTON D.C

PROJECT AREA



The purpose of this project is to expand overall interpretive and educational visitor experience at the Lincoln Memorial. Its needed because of current configuration of visitor services and park support facilities are insufficient.

PURPOSE + NEED



Only one elevator to the chamber and its unreliable



Restrooms outdated and require repairs



Egress to restrooms/exhibit space not current with life safety codes



Chamber bookstore too small

CURRENT CONDITIONS



Memorial designed by Henry Bacon and sculpture created by Daniel Chester French;

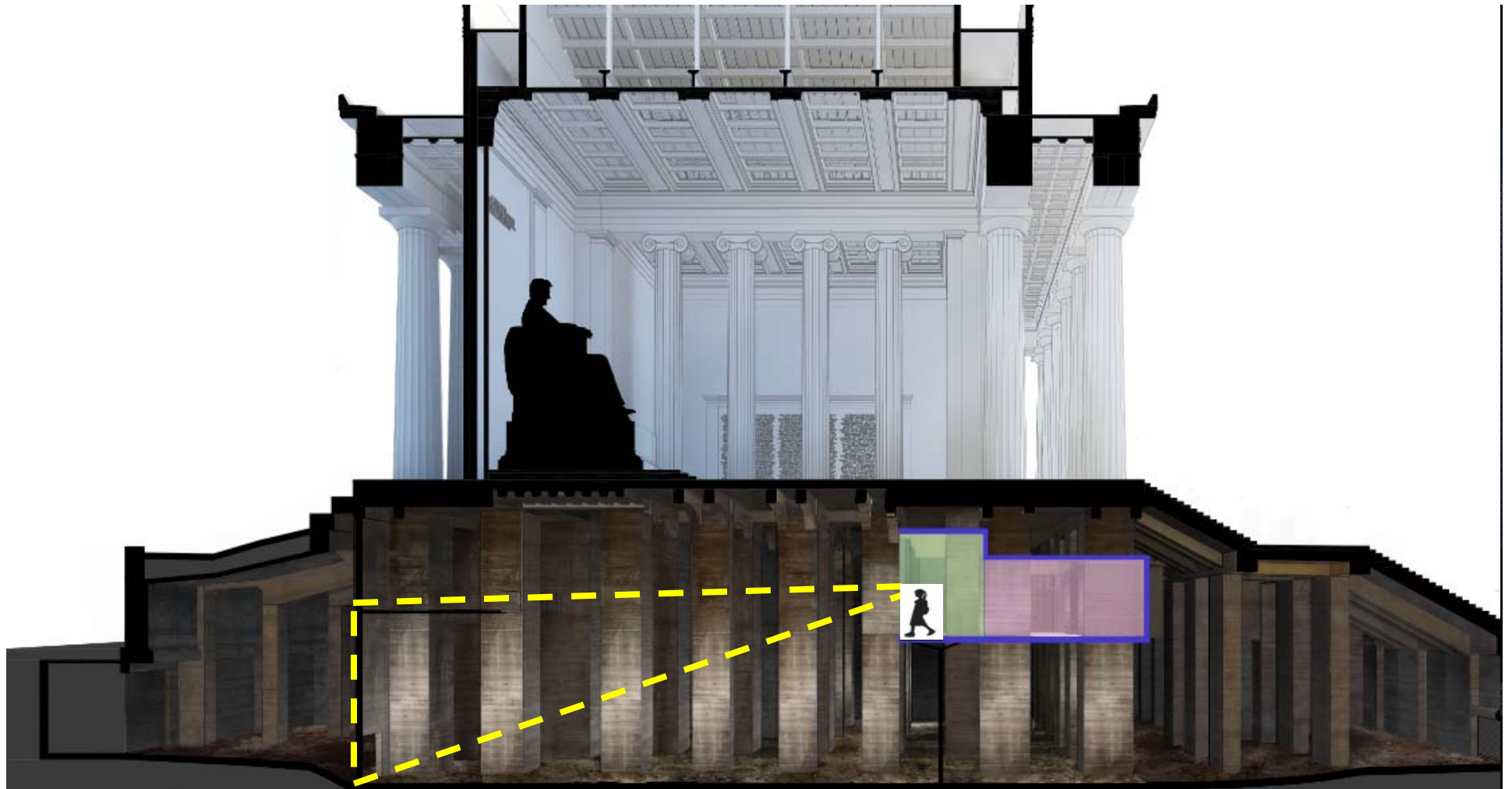
Dedicated in 1922 in the style of an ancient Greek temple;

Located on a site identified by the McMillan Commission in its 1901-1902 plan for Washington;

Prominent setting for events such as Marian Anderson's Easter Sunday concert (1939) and MLK's "I Have a Dream" speech (1963).

LINCOLN MEMORIAL

HISTORICAL OVERVIEW



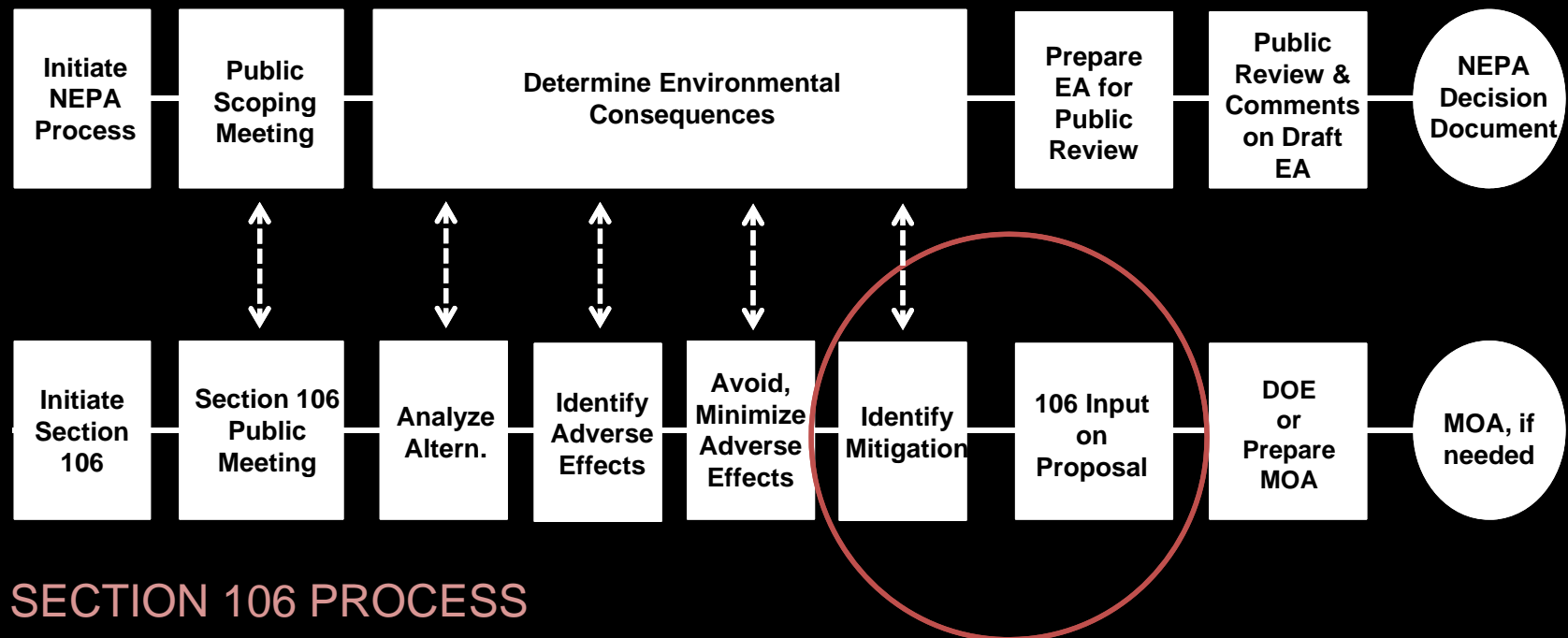
HISTORICAL OVERVIEW



HISTORICAL OVERVIEW



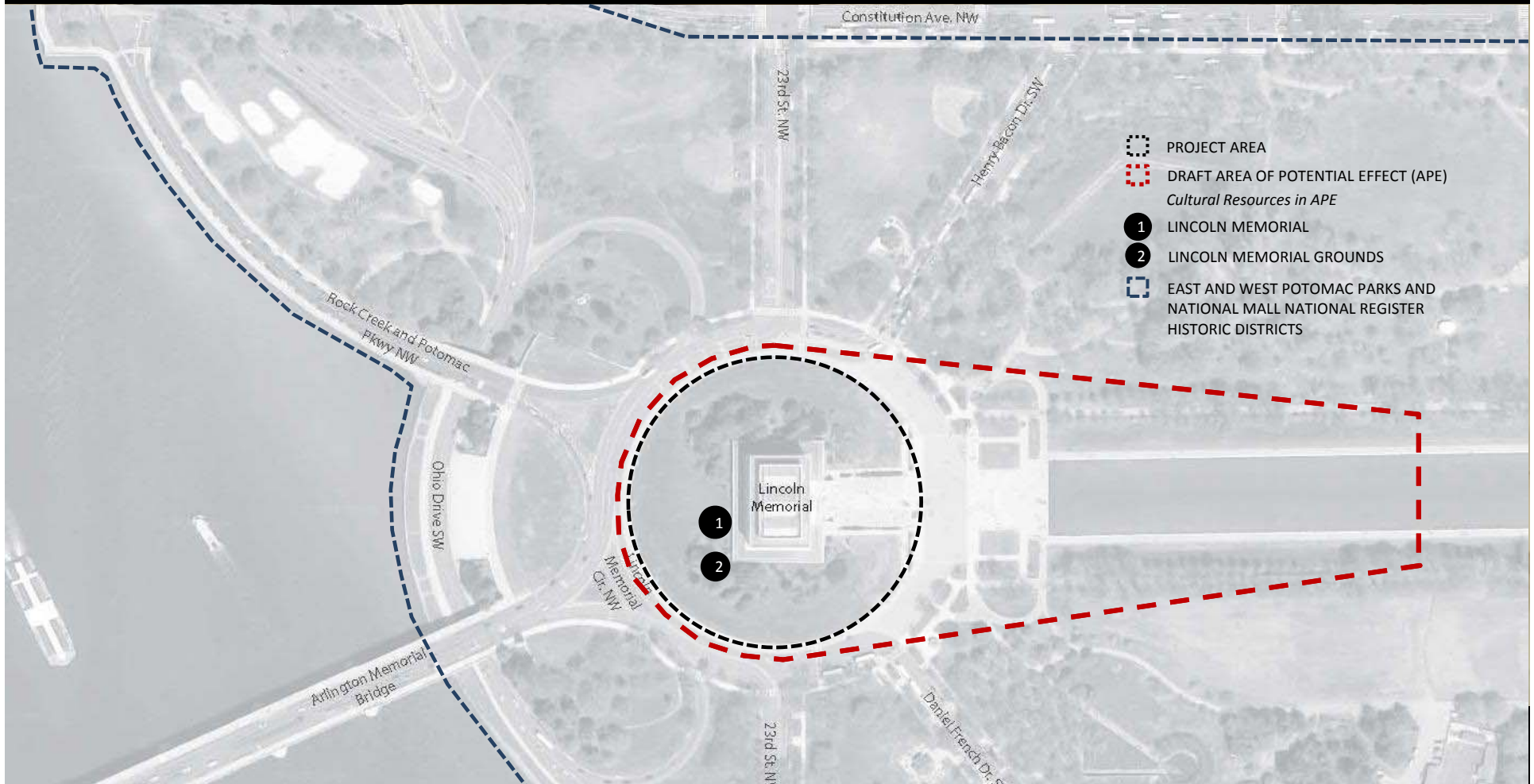
NEPA PROCESS



SECTION 106 PROCESS

- Public Scoping Meeting 6.27.17; EA released for comment (2/5-3/7);
- SHPO and Tribal Section 106 Consultation Initiated on 3.17.17 and 2.15.18

SEC. 106 UPDATE



AREA OF POTENTIAL EFFECT (APE)



Based on the findings of the Historic Structures Assessment report (2016):

- Memorial exterior (including stylobate, colonnade, entablature, exterior decorations);
- Memorial interior (including statuary chamber and rooms,
- Chamber roof and skylight chamber;
- Approachway and terrace;
- Bronze doors in raised terrace retaining wall;
- Lower and upper steps;
- North and south tripods;
- Raised terrace;
- Undercroft (beneath statuary Chamber)

Lincoln Memorial, following completion of reflecting pool , May 1923 (LOC)

CONTRIBUTING FEATURES



Based on the findings of the Historic Structures Assessment report (2016):

- Upper and lower roof materials
- North and south walkways and north and south plazas;
- Undercroft (beneath approachway and raised Terrace).

NON-CONTRIBUTING FEATURES

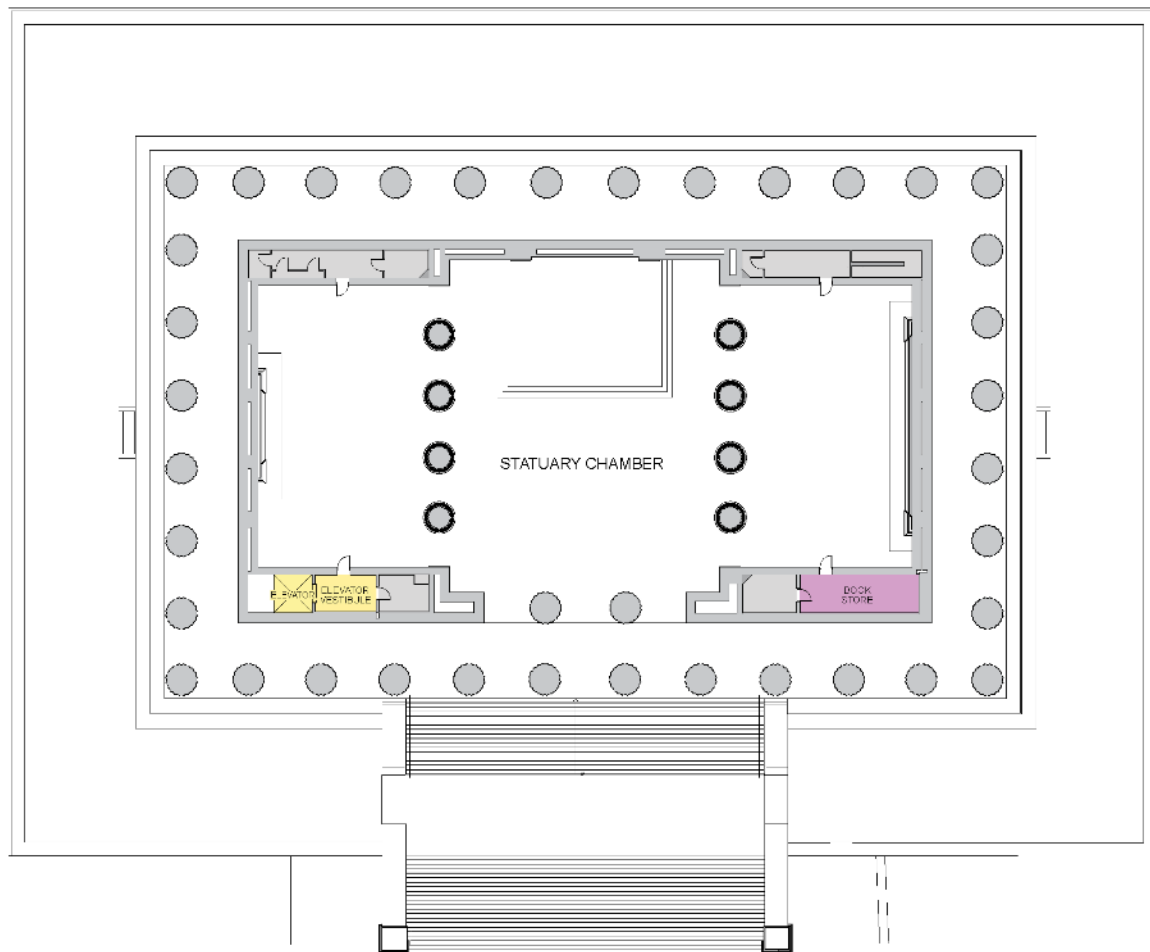


ALTERNATIVES

ALTERNATIVE A- NO ACTION

ALTERNATIVE B-PROPOSED ACTION

ALTERNATIVE C- IMPROVE EXISTING



LEGEND

RETAIL

CIRCULATION

RESTROOMS

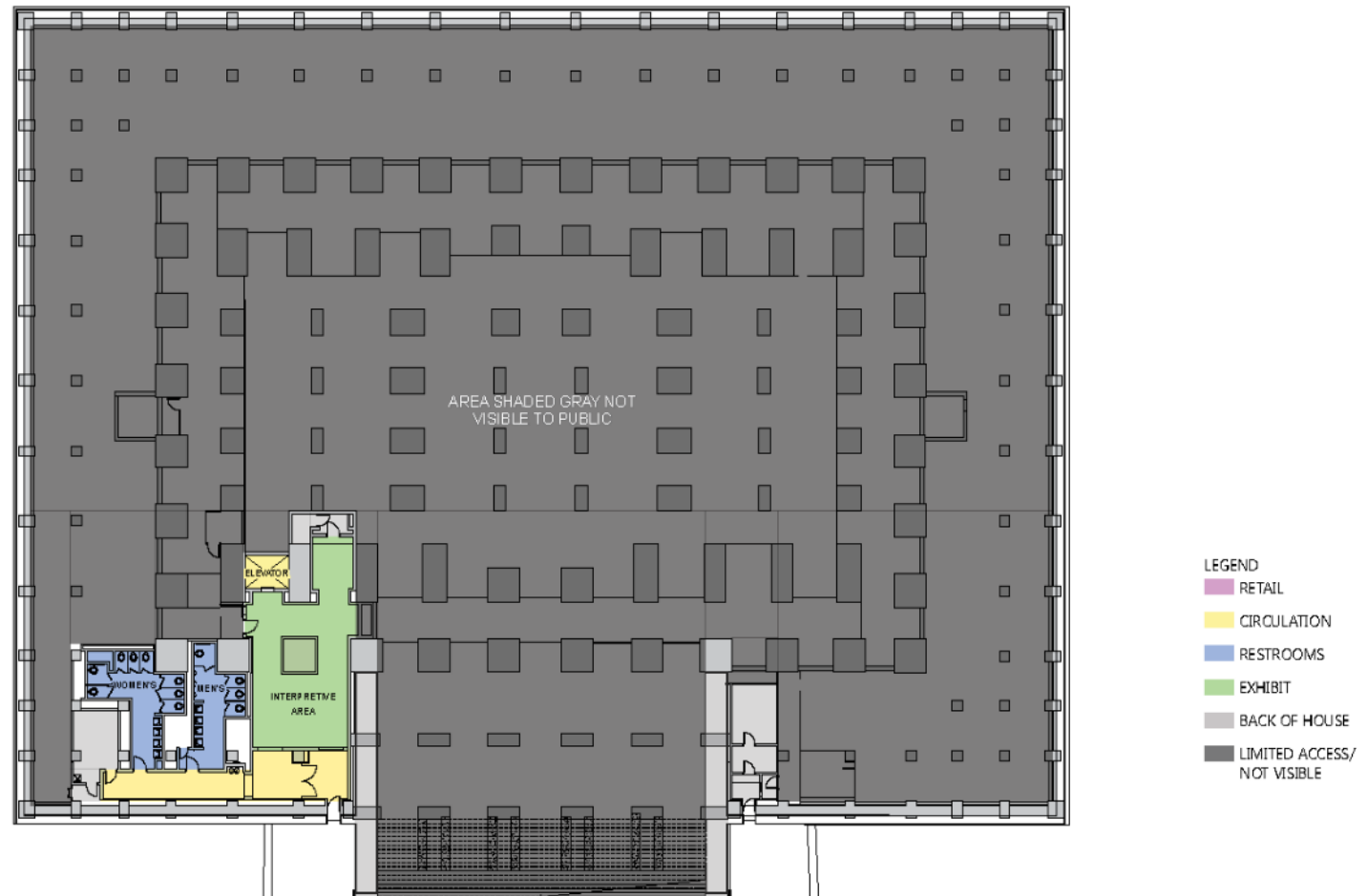
EXHIBIT

BACK OF HOUSE

LIMITED ACCESS/
NOT VISIBLE

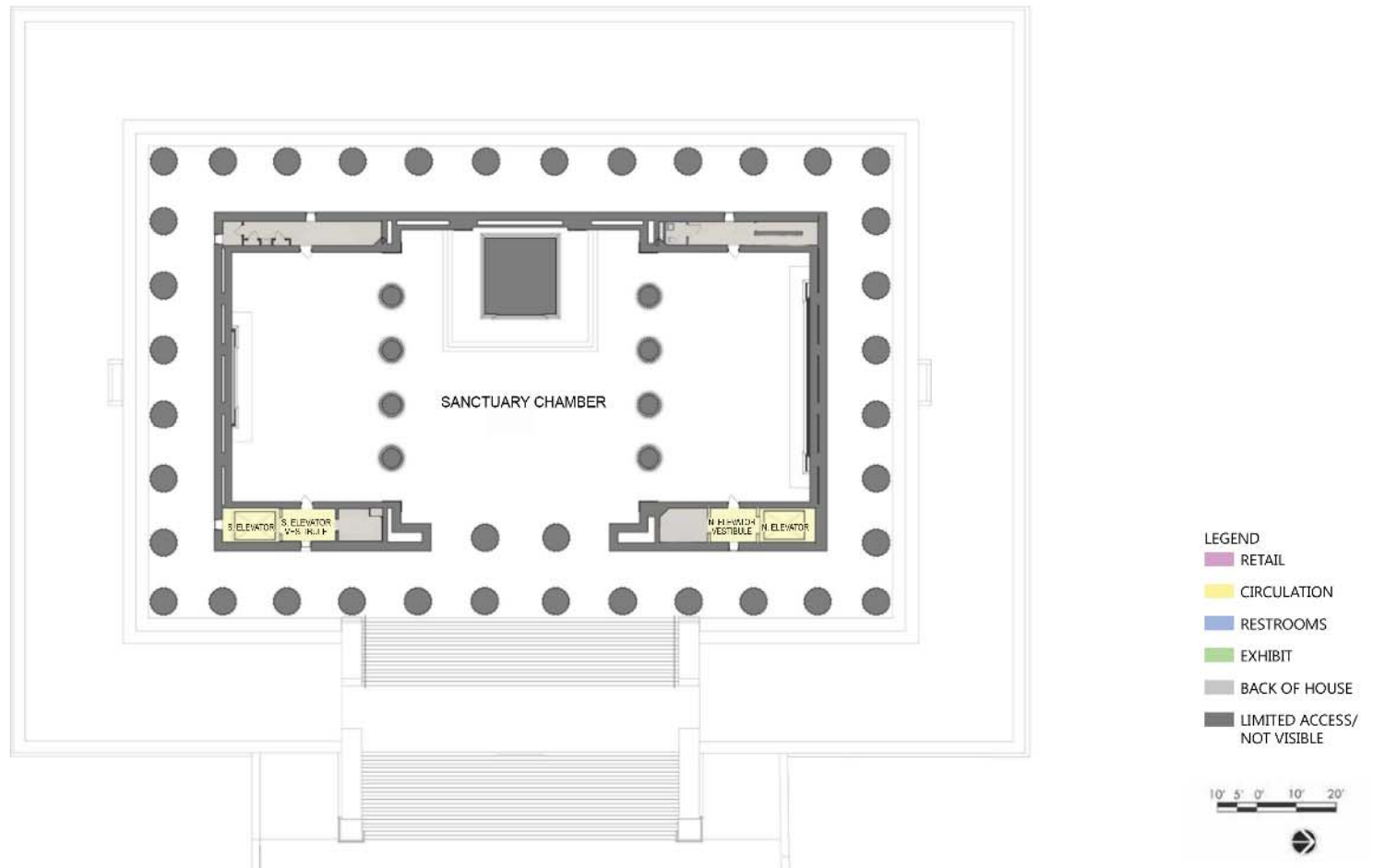
- No changes in egress; single 36" door connects to exhibit level
- No changes in the existing interpretive area and restrooms
- No views of the undercroft
- Single outdated elevator remains
- Retain existing retail area, USPP office, staff breakroom, single elevator lobby, and janitor's closet

NO ACTION
ALT. A



- No changes in egress; single 36" door connects to exhibit level
- No changes in the existing interpretive area and restrooms
- No views of the undercroft
- Single outdated elevator remains
- Retain existing retail area, USPP office, staff breakroom, single elevator lobby, and janitor's closet

NO ACTION
ALT. A



- Improved egress from exhibit level; south and north doors enlarged to 72" (both connect to exhibit level)
- Exhibit level expanded for interpretive space, additional restrooms, new retail area
- Curtain wall provides views of the undercroft
- South elevator renovated and updated, new elevator added in the north

PROPOSED ACTION

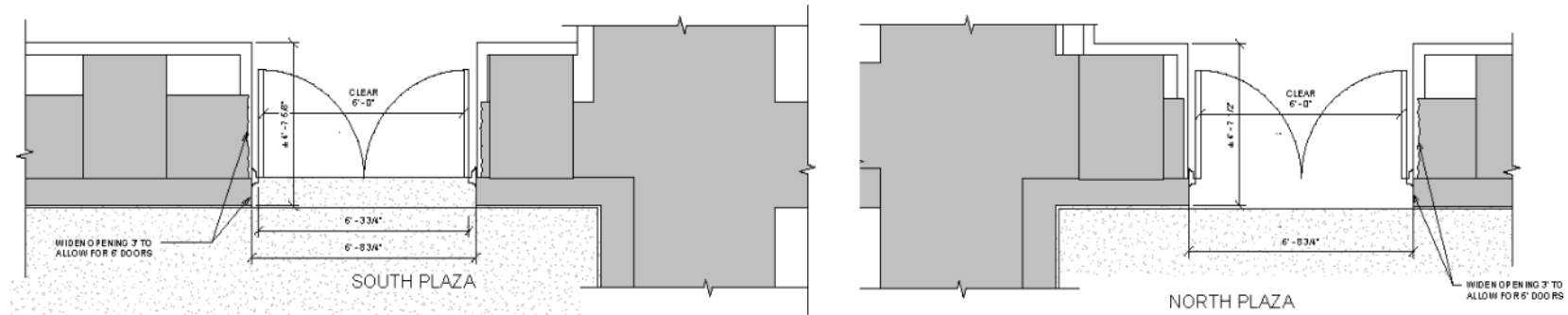
ALT. B



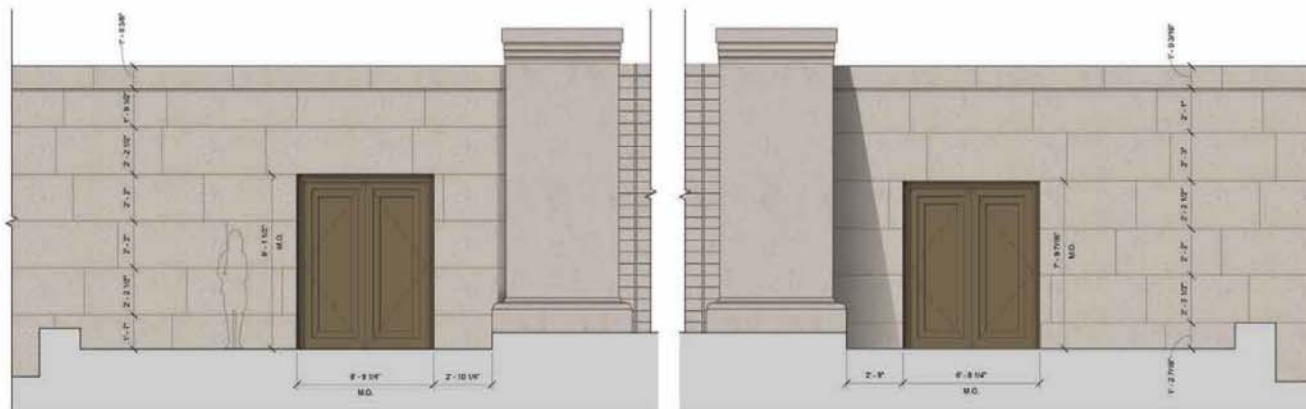
- Improved egress from exhibit level; south and north doors enlarged to 72" (both connect to exhibit level)
- Exhibit level expanded for interpretive space, additional restrooms, new retail area
- Curtain wall provides views of the undercroft
- South elevator renovated and updated, new elevator added in the north

PROPOSED ACTION

ALT. B



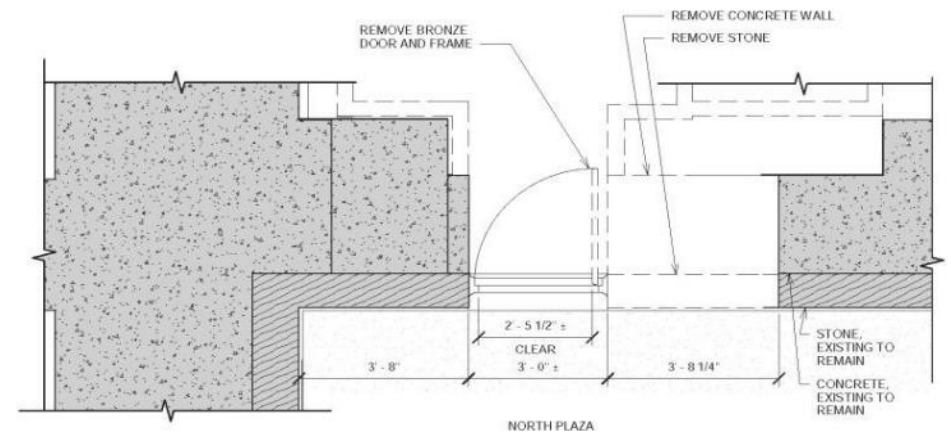
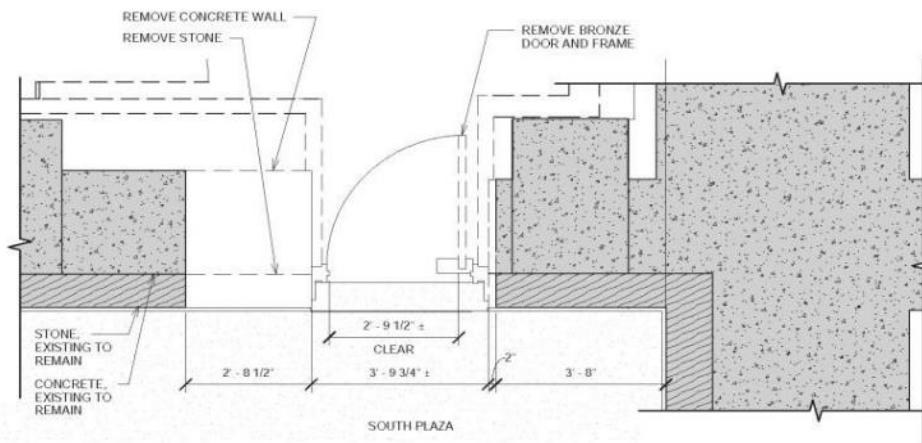
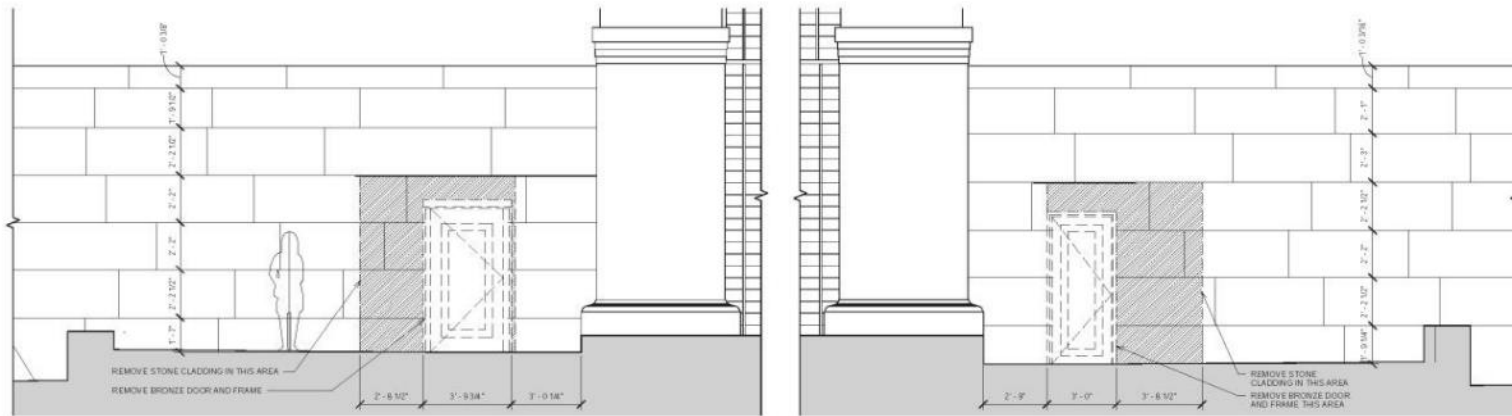
Plan View



East Elevation

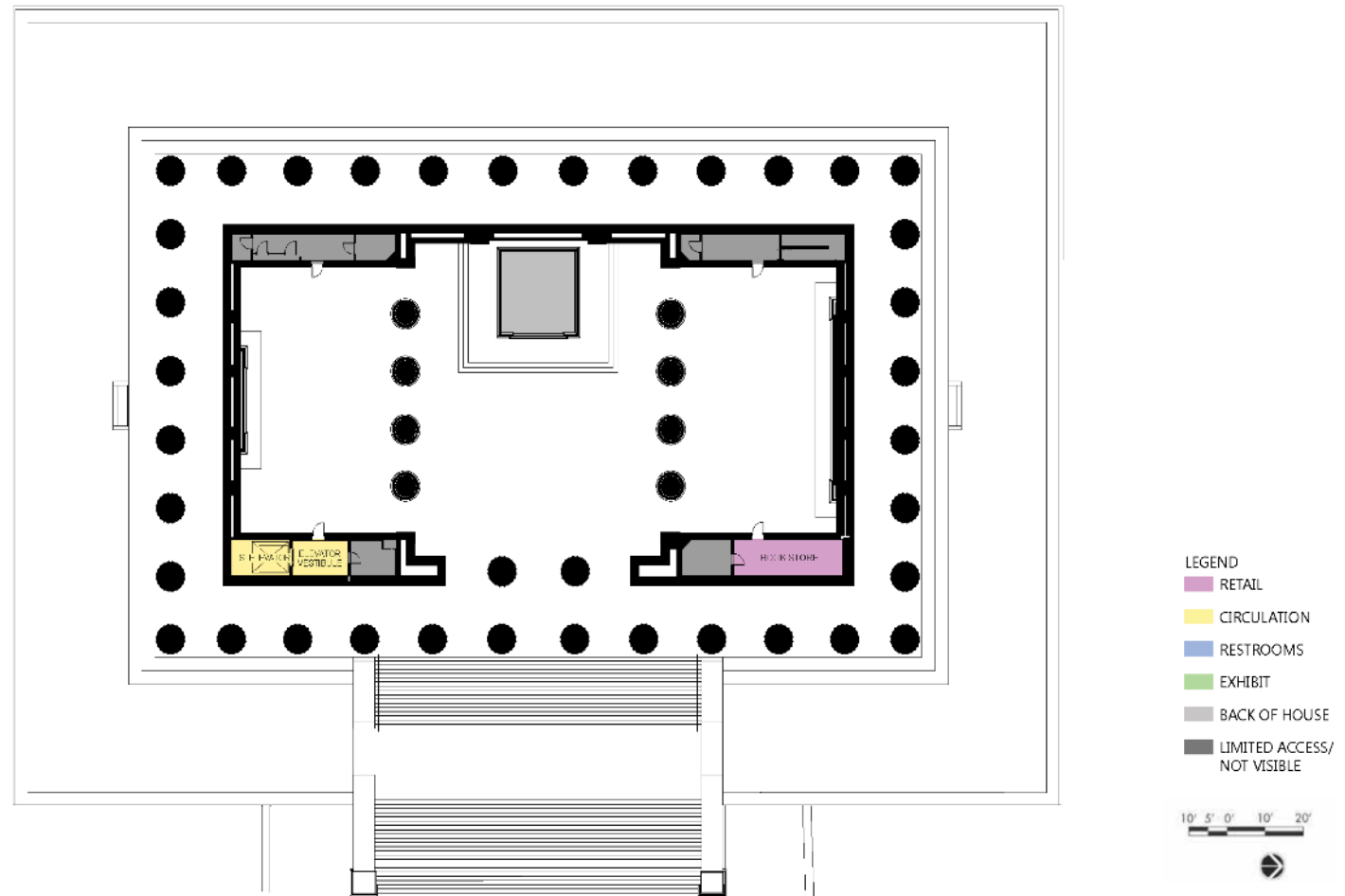
- Improved egress from exhibit level; south and north doors enlarged to 72" (both connect to exhibit level)
- Exhibit level expanded for interpretive space, additional restrooms, new retail area
- Curtain wall provides views of the undercroft
- South elevator renovated and updated, new elevator added in the north

PROPOSED ACTION
ALT. B



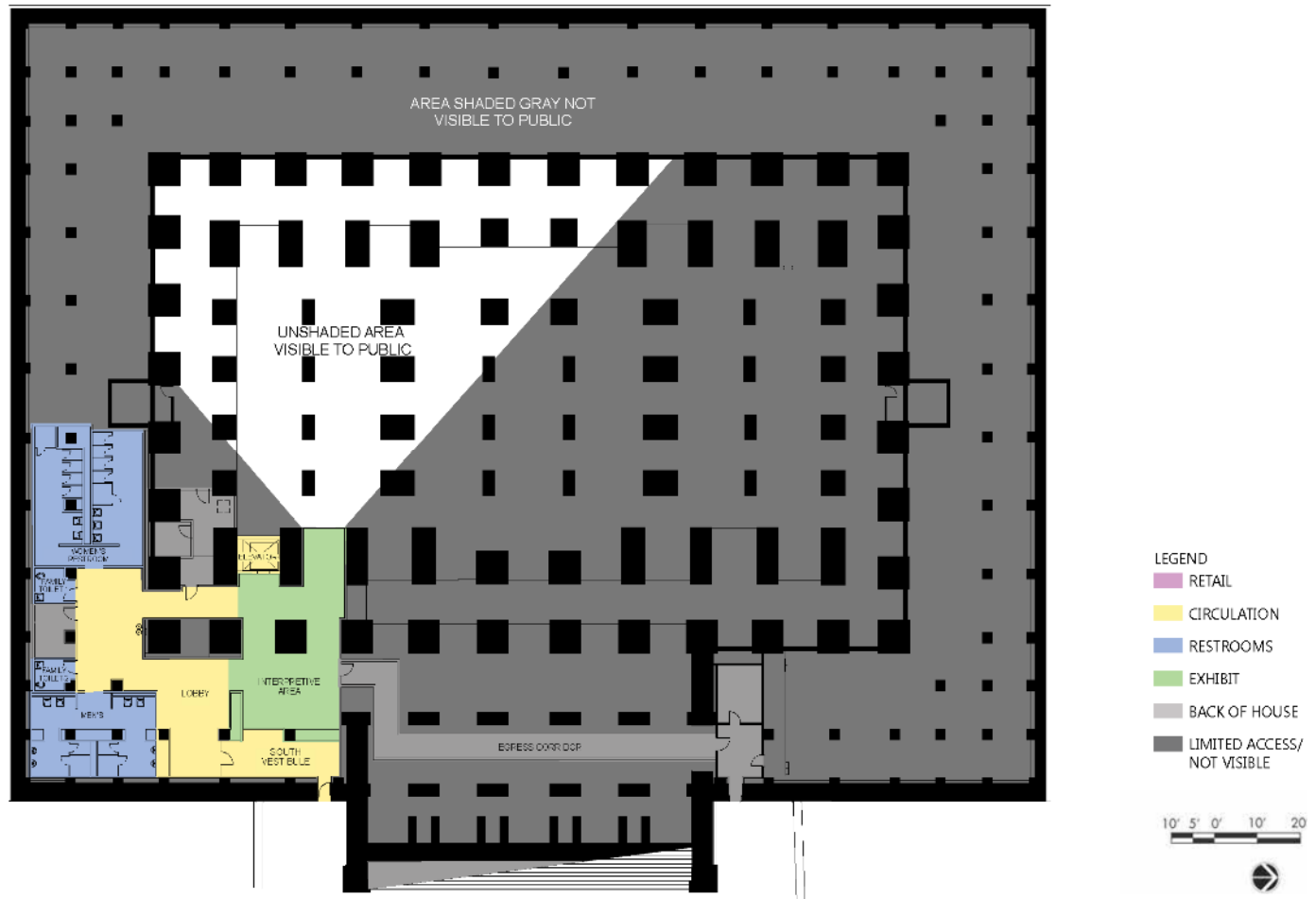
- Improved egress from exhibit level; south and north doors enlarged to 72" (both connect to exhibit level)
- Exhibit level expanded for interpretive space, additional restrooms, new retail area
- Curtain wall provides views of the undercroft
- South elevator renovated and updated, new elevator added in the north

PROPOSED ACTION
ALT. B



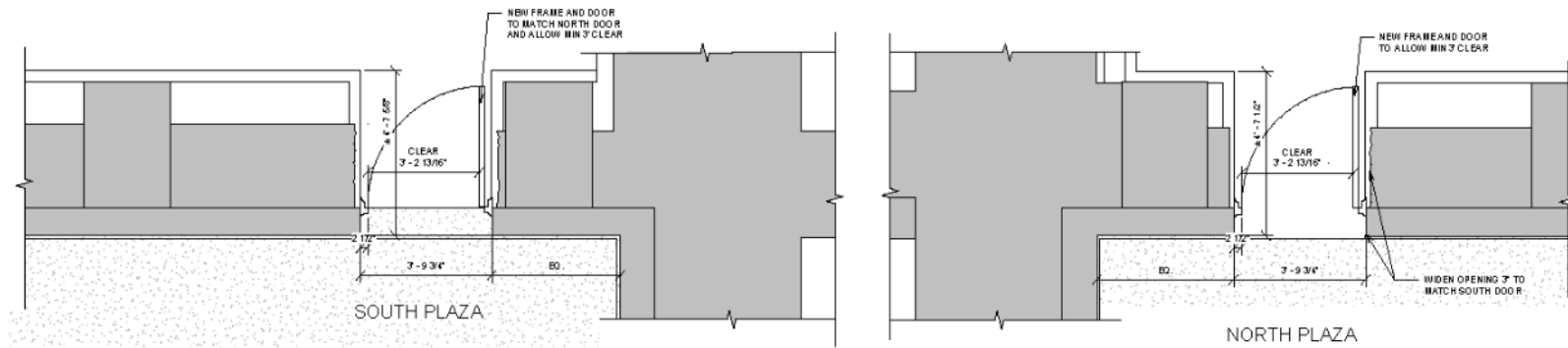
- Slightly improved egress from exhibit level; north doors widened by 5" and connected to public space on exhibit level for 2nd egress point
- Modest changes in the existing interpretive area and additional restrooms
- Picture window into the undercroft
- Retail space remains as is, no second elevator

IMPROVE EXISTING ALT. C

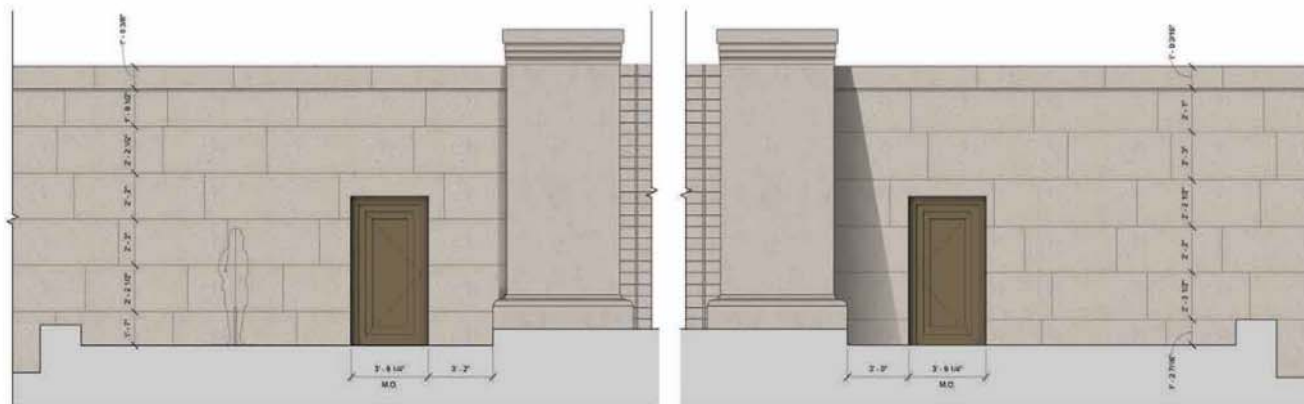


- Slightly improved egress from exhibit level; north doors widened by 5" and connected to public space on exhibit level for 2nd egress point
- Modest changes in the existing interpretive area and additional restrooms
- Picture window into the undercroft
- Retail space remains as is, no second elevator

IMPROVE EXISTING ALT. C



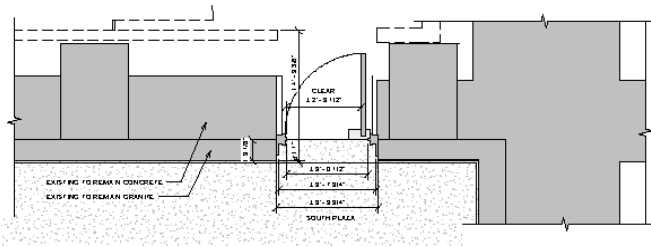
Plan View



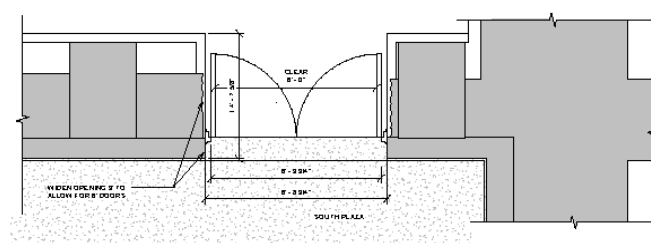
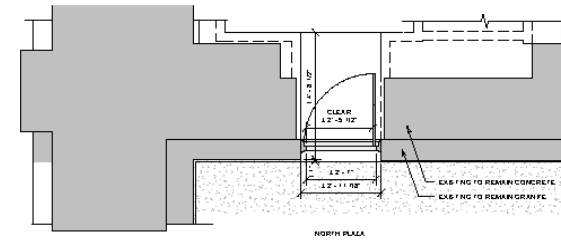
East Elevation

- Slightly improved egress from exhibit level; north doors widened by 5" and connected to public space on exhibit level for 2nd egress point
- Modest changes in the existing interpretive area and additional restrooms
- Picture window into the undercroft
- Retail space remains as is, no second elevator

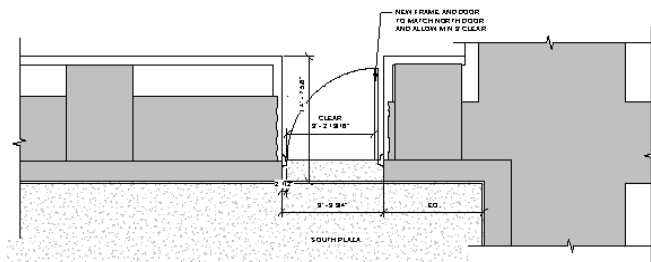
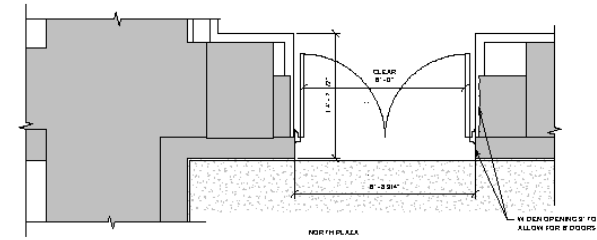
IMPROVE EXISTING
ALT. C



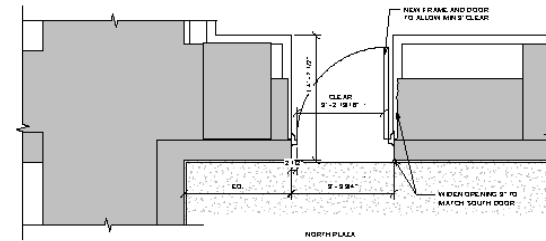
Alternative A: No Action



Alternative B: NPS Preferred
- 72" Door Expansion



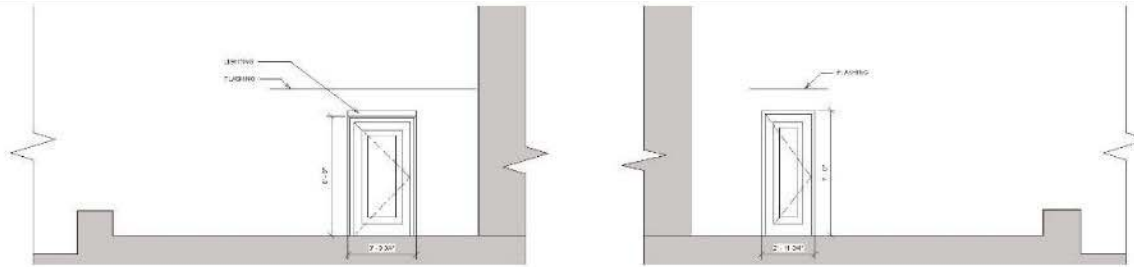
Alternative C: Improve Existing
- 36" Door Expansion



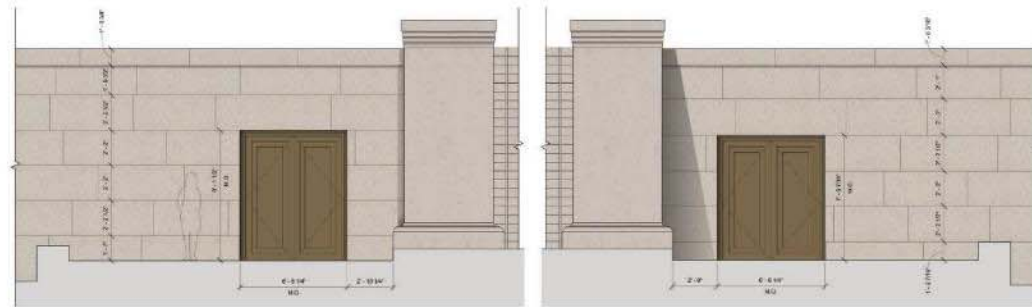
Lincoln Memorial Rehabilitation
Environmental Assessment

FIGURE 16
Exterior Doors Comparison, Plan View

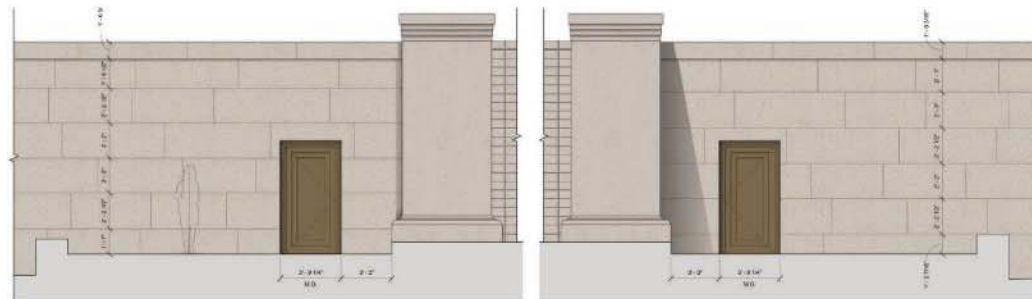
COMPARISONS



Alternative A: No Action



Alternative B: NPS Preferred
- 72" Door Expansion



Alternative C: Improve Existing
- 36" Door Expansion

Lincoln Memorial Rehabilitation
Environmental Assessment

FIGURE 17
Exterior Doors Comparison, East Elevation

COMPARISONS



BRONZE DOORS, EAST ELEVATION

ALT. A



BRONZE DOORS, EAST ELEVATION

ALT. B



BRONZE DOORS, EAST ELEVATION

ALT. C

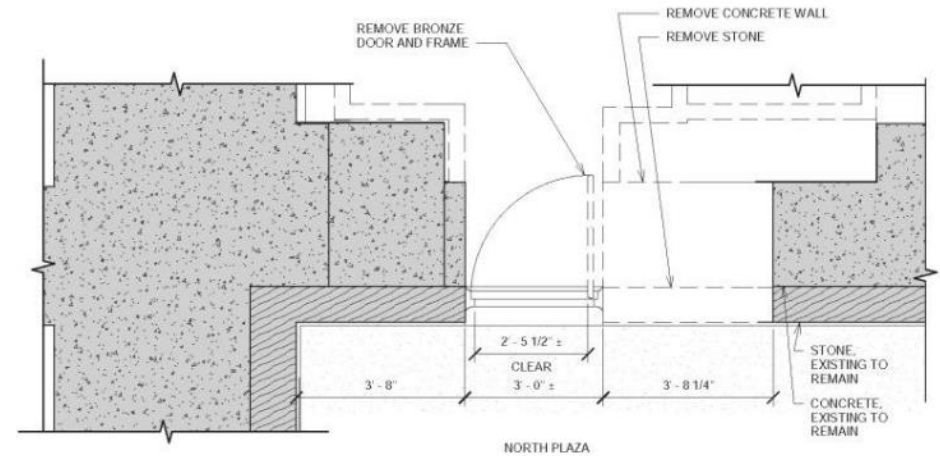
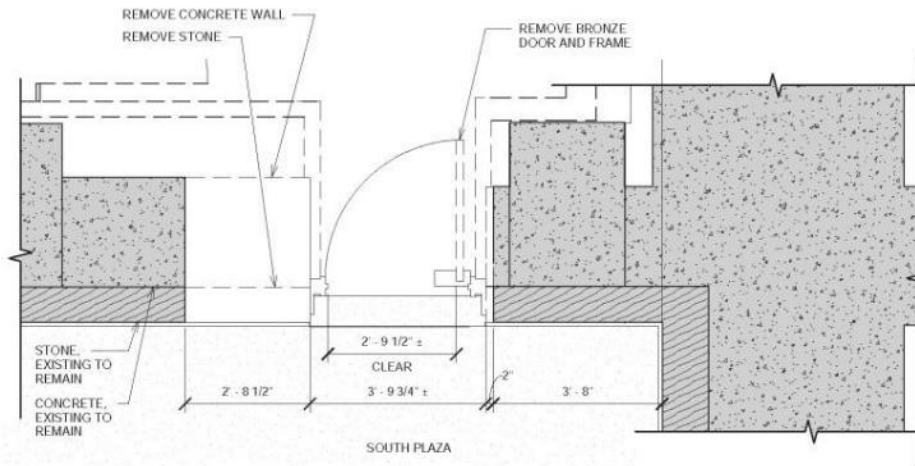
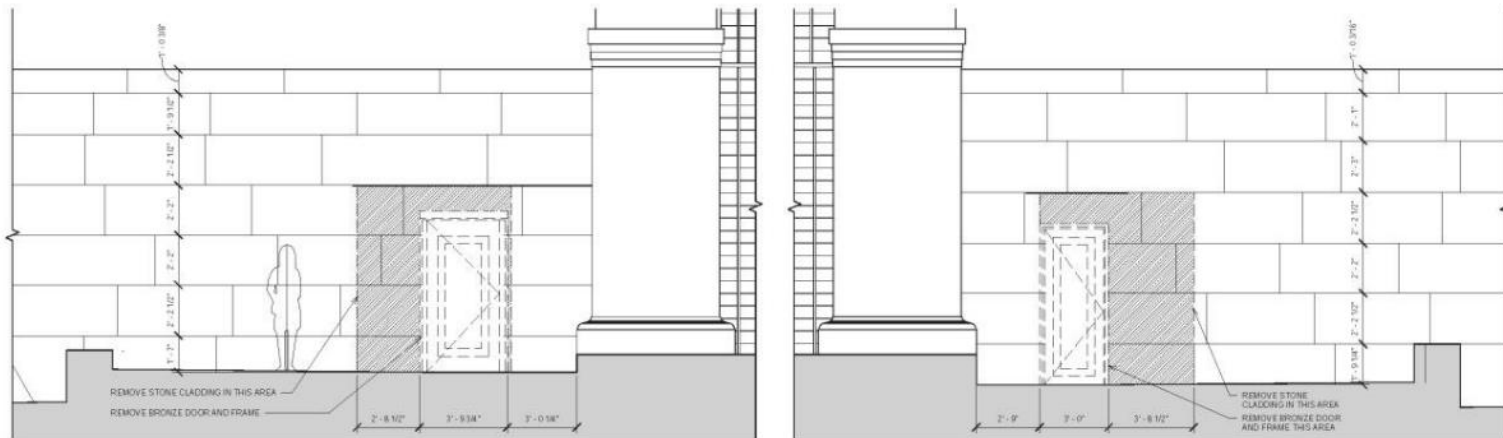
Adverse effect on Memorial Exterior

- The doors on the east façade of the Lincoln Memorial would be replaced with larger doors of a sympathetic design.
- A change in appearance of the main façade would occur and a loss of historic masonry would be required for the new doors

Adverse effect on Memorial Interior

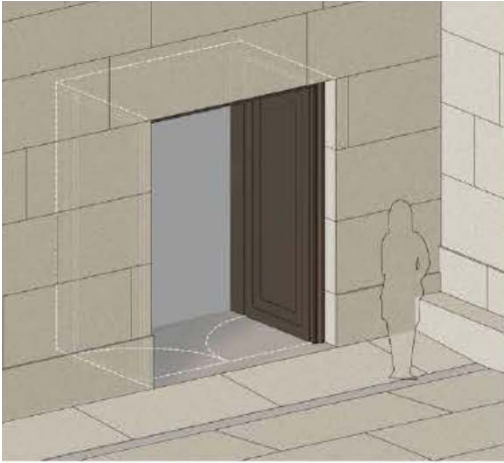
- Removal of historic material on the chamber level for new elevator and improved mechanical systems. This loss of material would be in areas not visible to the public.
- Removal and replacement of historic material would be required on the exhibit level for new structural elements. The expanded exhibit level would result in a change in appearance of the undercroft and the introduction of modern materials.
- Some historic character of the undercroft would be diminished with these changes. However, most of the changes would be concentrated within the non-character-defining raised terrace area.

EFFECTS-ALT B. (Preferred)



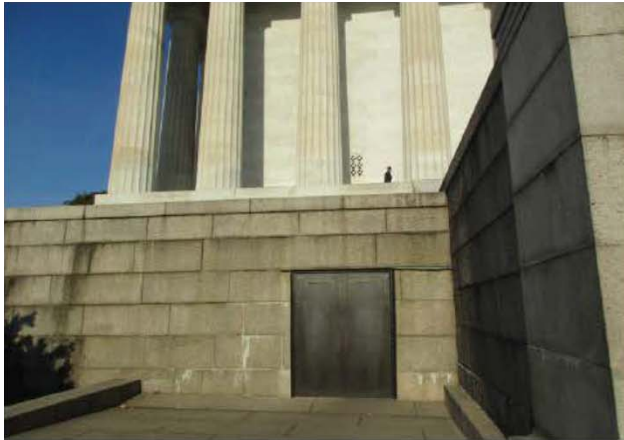
ALT B: 72' OPENING (2x36") DEMO PLAN, EAST ELEVATION

EFFECTS-ALT B. (Preferred)

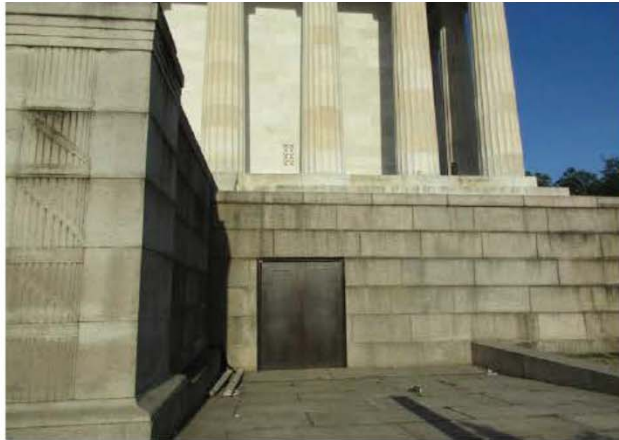


72' OPENING (2x36") PHOTO SIMULATION, EAST ELEVATION

EFFECTS-ALT B. (Preferred)



1 - SOUTH UNDERCROFT DOOR



2 - NORTH UNDERCROFT DOOR



3 - VIEW FROM APPROACHWAY

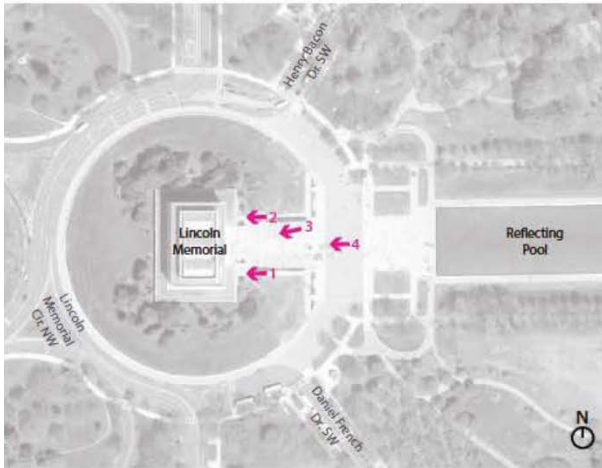


PHOTO KEY PLAN



4 - VIEW FROM MEMORIAL CIRCLE

72' OPENING (2x36") SIMULATION CLOSED, EAST ELEVATION

EFFECTS-ALT B. (Preferred)



1 - SOUTH UNDERCROFT DOOR



2 - NORTH UNDERCROFT DOOR



3 - VIEW FROM APPROACHWAY

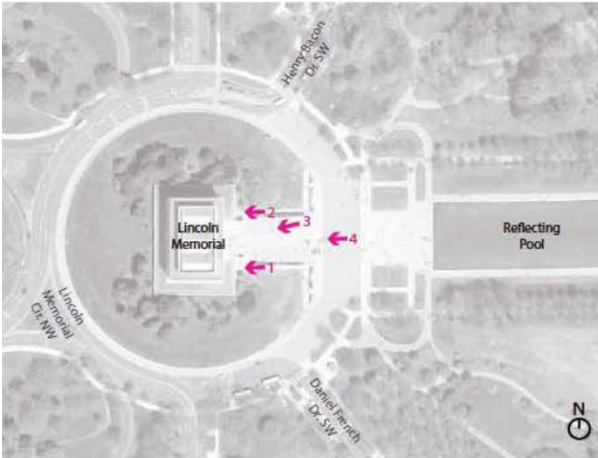


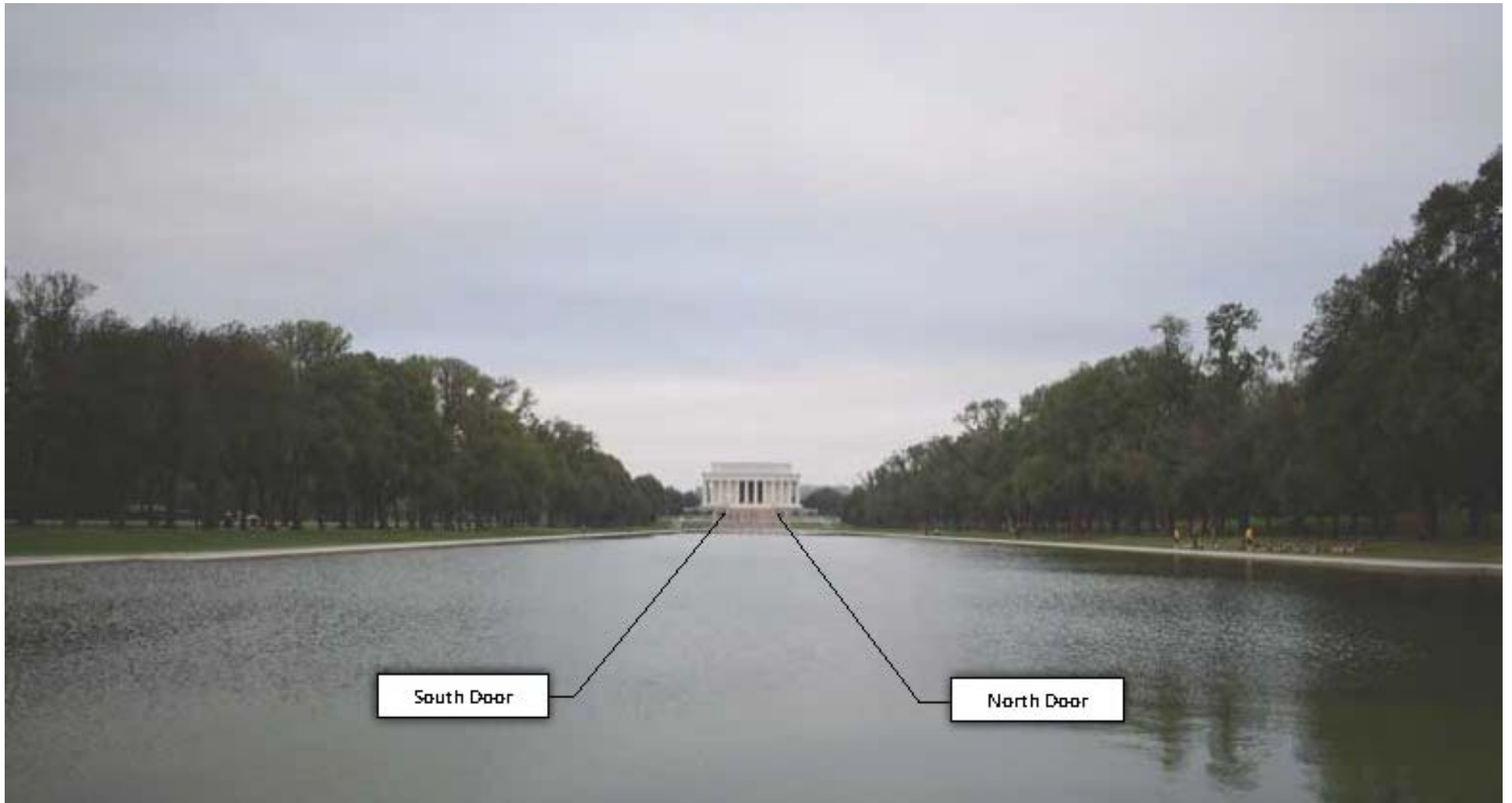
PHOTO KEY PLAN



4 - VIEW FROM MEMORIAL CIRCLE

72' OPENING (2x36") SIMULATION OPENED, EAST ELEVATION

EFFECTS-ALT B. (Preferred)



72' OPENING (2x36") SIMULATION OPENED, EAST ELEVATION

EFFECTS-ALT B. (Preferred)



72' OPENING (2x36") SIMULATION OPENED, EAST ELEVATION

EFFECTS-ALT B. (Preferred)



MITIGATION OPTIONS

- POTENTIALLY ADD REMOVED STONE & BRONZE DOOR TO MUSEUM COLLECTION
 - UPDATE HABS DOCUMENTATION
- PREPARATION OF INTERPRETATIVE MATERIALS ON MEMORIAL DEVELOPMENT
 - CONSERVE AND PROTECT HISTORIC GRAFFITI
 - COMPLETE CONDITION ASSESSMENT OF GUERIN MURALS
- HISTORIC STRUCTURE/LANDSCAPE PRESERVATION MAINTENANCE PLAN



OPPORTUNITIES TO COMMENT

Please submit comments at:

www.parkplanning.nps.gov/LincolnMemorialRehab

or mail to:

ATTN: Lincoln Memorial Rehabilitation
Superintendent, National Mall and Memorial Parks
900 Ohio Drive, SW Washington, DC 20024