

# **Parkland Restoration Plan Environmental Assessment**

Glen Echo Park - Public Scoping Meeting February 27, 2018



# **Welcome**

## **Public Scoping Open House**

### **Parkland Adjacent to Intelligence Community Campus-Bethesda (ICC-B) Parkland Restoration Plan Environmental Assessment**

- The purpose of the open house is to present the alternative concepts and engage the public to identify issues, concerns, and ideas.
- The alternative concepts will be further developed and refined with ideas that are collected during the public comment period. We want your input regarding the alternative concepts.



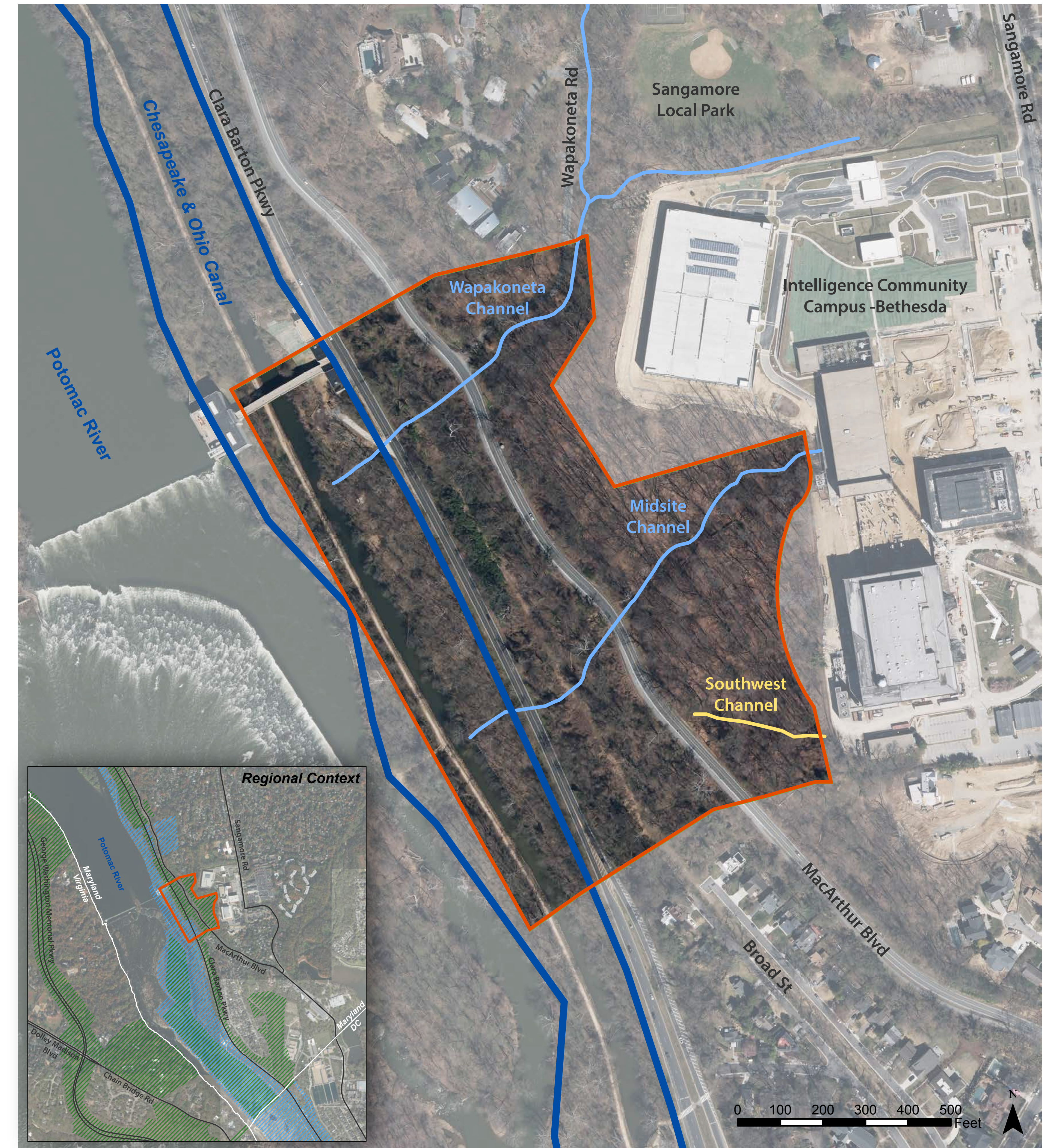
# Parkland Restoration Plan Environmental Assessment

Glen Echo Park - Public Scoping Meeting February 27, 2018



## Project Background

- The project area is located on NPS land between the Intelligence Community Campus-Bethesda (ICC-B) and the Chesapeake & Ohio (C&O) Canal National Historical Park.
- Two NPS units, the George Washington Memorial Parkway (GWMP) and the C&O Canal National Historical Park (CHOH), administer the project area.
- The project focuses on three eroded channels and sedimentation in the C&O Canal.
- The Office of the Director of National Intelligence (ODNI) has redeveloped the ICC-B campus, which is adjacent to the project area.
- As part of the redevelopment project, ODNI agreed to address pre-existing erosion and sedimentation concerns caused by the stormwater runoff from the previous facility.
- In 2015, the U.S. Army Corps of Engineers and Wiley|Wilson developed 15% channel stabilization concept designs for the three channels east of MacArthur Blvd.



### LEGEND

- |  |  |
|--|--|
| Project Area   | Natural stream channels  |
| NPS George Washington Memorial Parkway               | Non-natural channel  |
| NPS Chesapeake & Ohio Canal National Historical Park | Chesapeake & Ohio Canal National Historical Park Historic District |



# Parkland Restoration Plan Environmental Assessment

Glen Echo Park - Public Scoping Meeting February 27, 2018



# Purpose and Need

## Purpose

The purpose of the proposed project is to:

- Improve the long-term ecological function and drainage of two natural stream channels
- Stabilize a non-natural erosion channel
- Resolve sedimentation issues on NPS land that is downstream of the ICC-B

## Need

The project is needed to address stormwater runoff from development that has resulted in:

- Tree root and streambank undercutting
- Sedimentation deposition
- Channel and culvert blockages
- Sediment load in the Chesapeake & Ohio Canal requiring removal

Channel erosion has decreased the ecological functions and values of these channels and the Chesapeake & Ohio Canal.



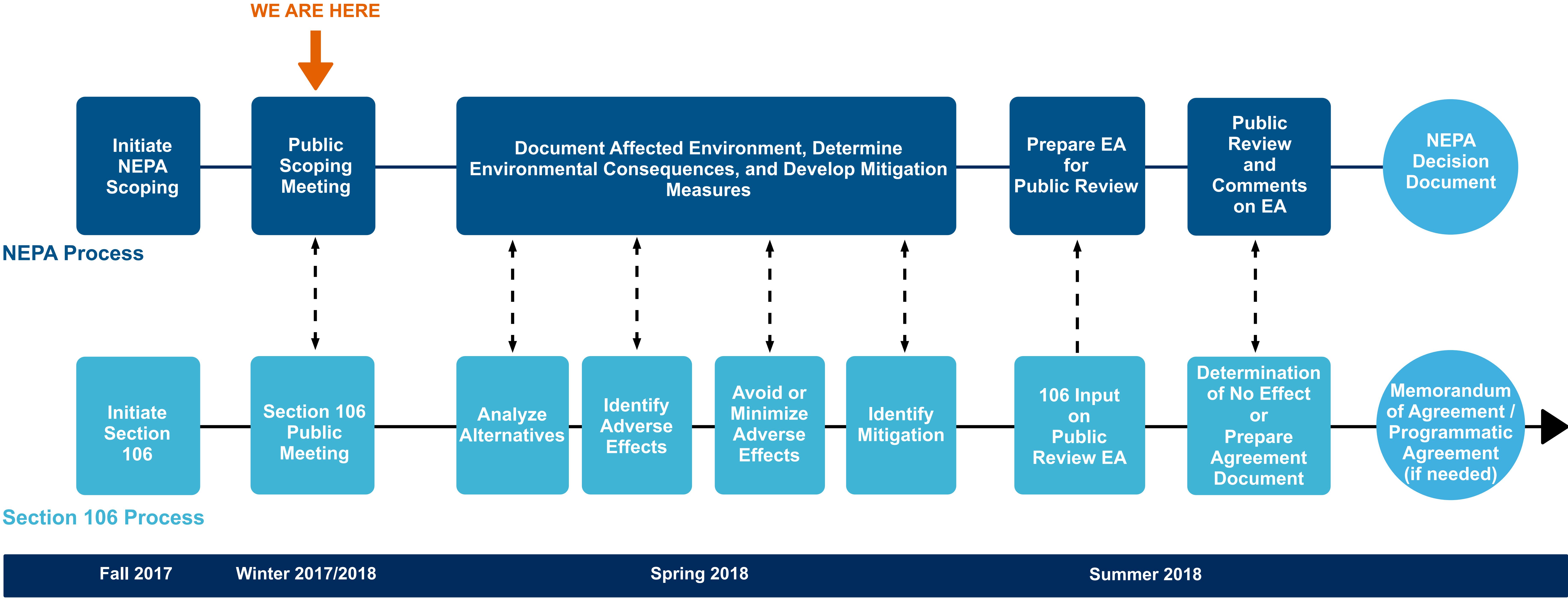


# Parkland Restoration Plan Environmental Assessment

Glen Echo Park - Public Scoping Meeting February 27, 2018



## NEPA + Section 106 Processes





# Parkland Restoration Plan Environmental Assessment

Glen Echo Park - Public Scoping Meeting February 27, 2018



## What Issues will the EA Address?

- Uncontrolled stormwater from outside the project site is currently eroding streambanks, undercutting trees, and adding debris to channels
- Erosion and poorly controlled stormwater have led to sedimentation of the C&O Canal, diminishing the historic character and ecological condition of the site
- The proposed project could introduce or change elements of documented historic resources, archeological resources, and cultural landscapes
- The repair of parkland could remove trees that are in poor condition
- The restoration of parkland could allow establishment of invasive species within disturbed area
- The restoration of parkland could negatively affect aquatic natural resources



Stairway to nonextant electronic trolley line



Chesapeake & Ohio Canal



# Parkland Restoration Plan Environmental Assessment

Glen Echo Park - Public Scoping Meeting February 27, 2018



## Existing Conditions

### Wapakoneta Channel

- Exposed sewer pipe
- Debris
- Eroded sections

### Midsite Channel

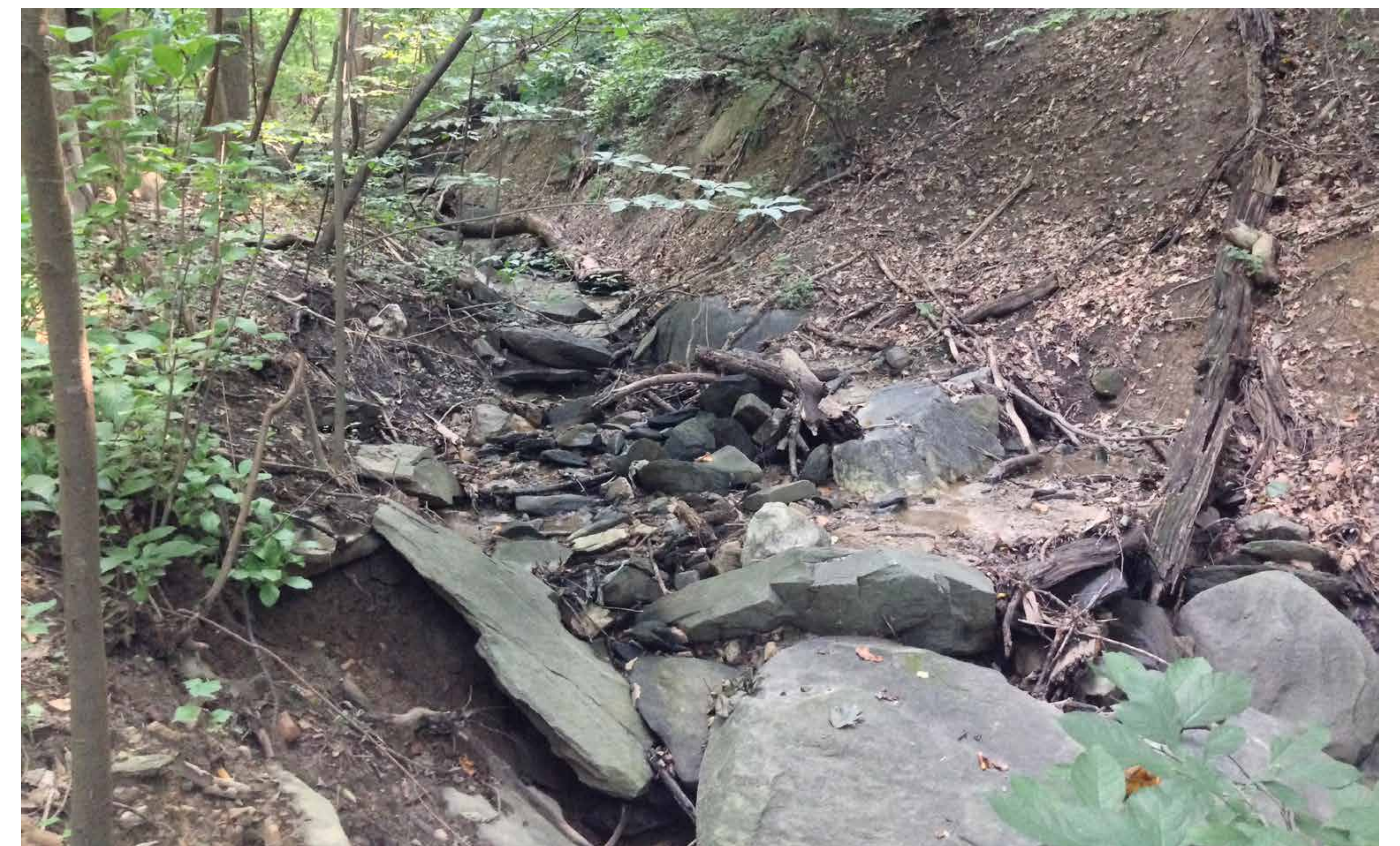
- Larger channel with wide cobblestone bottom
- Large undercut trees
- Highest functioning channel in project area
- Bank erosion
- Erosion at end of culvert running under MacArthur Blvd
- Tree debris blocking culvert
- Currently stable

### Southwest Channel

- Deep erosion ditch
- Heavy presence of invasive species

### C&O Canal

- Multiple bars of sediment
- Silted-in culvert no longer carries water under the canal prism





# Parkland Restoration Plan Environmental Assessment

Glen Echo Park - Public Scoping Meeting February 27, 2018



## Concept Elements under Consideration

- Remove debris blockages
- Remove sedimentation
- Restore channel cross-sections and profiles with natural materials and alteration of existing stone
- Revegetate as needed using native species
- Remove invasive species near work area
- Fill non-natural stream channel
- Install riprap with stone and materials that are visually compatible with natural conditions
- Stabilize trees, if possible, that have been undercut



Tree debris blocking channel and culvert



Scrap metal object in channel



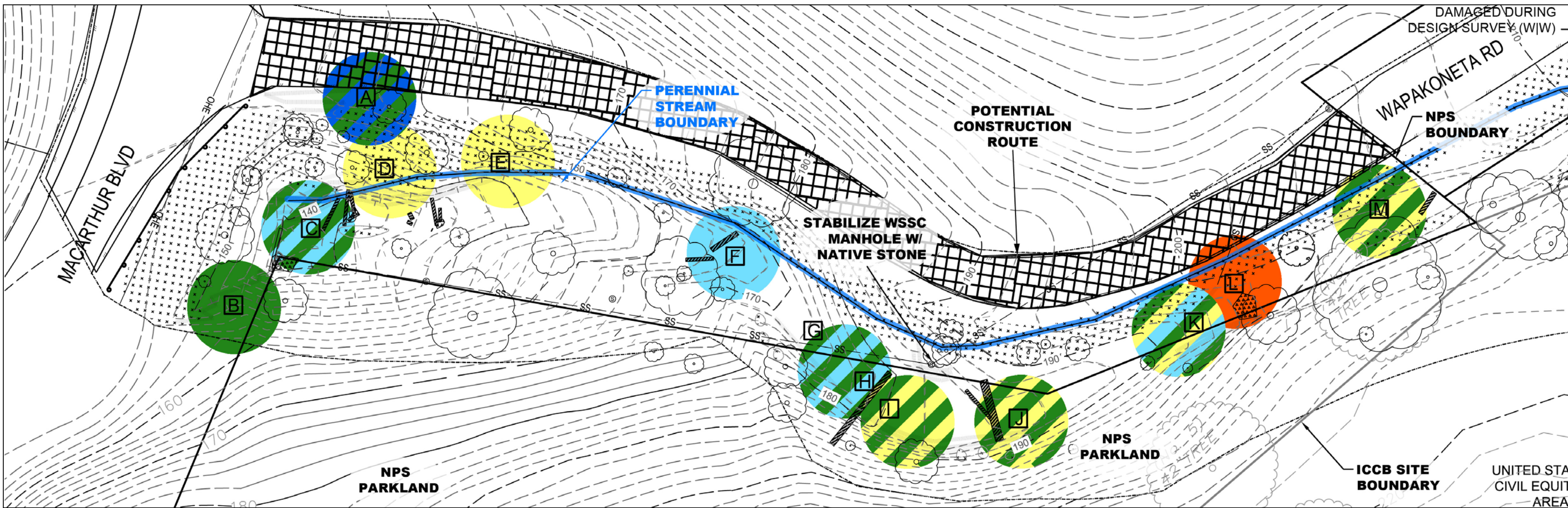
# Parkland Restoration Plan Environmental Assessment

Glen Echo Park - Public Scoping Meeting February 27, 2018



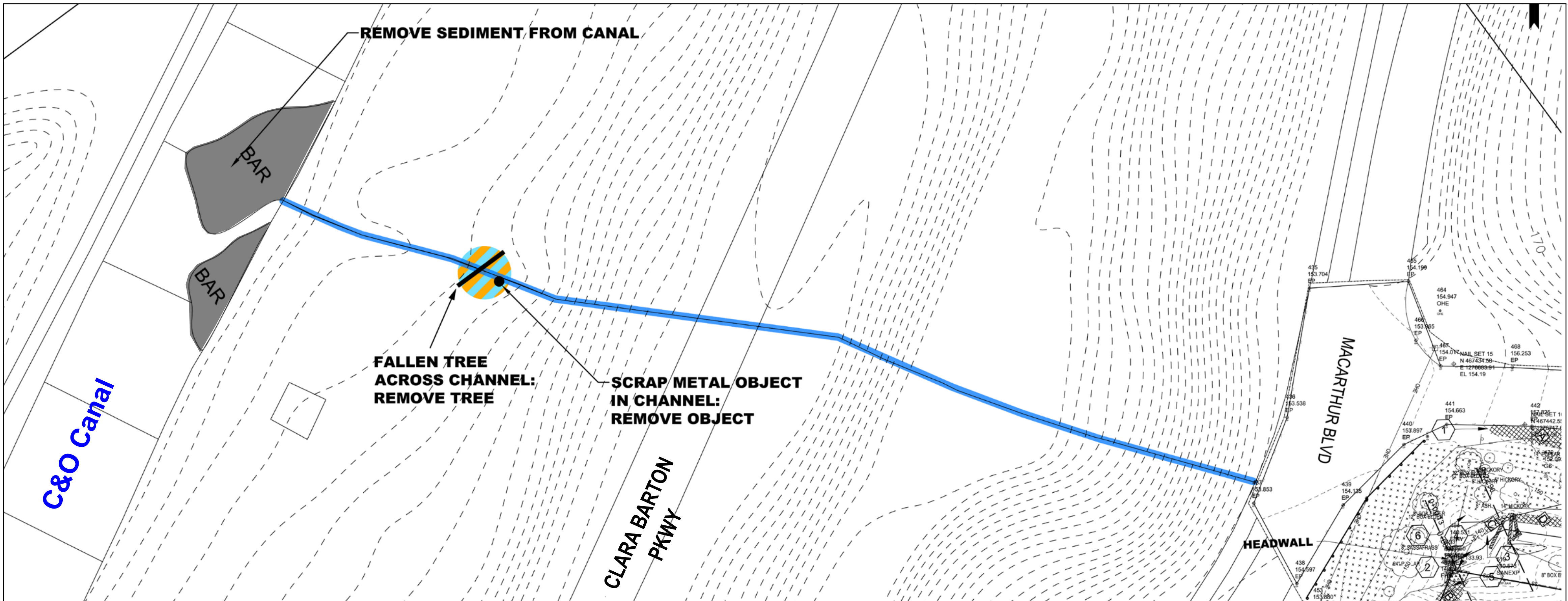
## Alternative Concept: Wapakoneta Channel

### East of MacArthur Blvd



- Stabilize road shoulder
- Remove tree debris blocking channel
- Use sandy clay backfill with native soils compacted within coir blocks to build up bank slope
- Stabilize with native vegetation plantings
- Use native stone to provide culvert outfall protection

### West of MacArthur Blvd



- Remove fallen tree across channel
- Remove debris blocking channel
- Remove sediment from C&O Canal

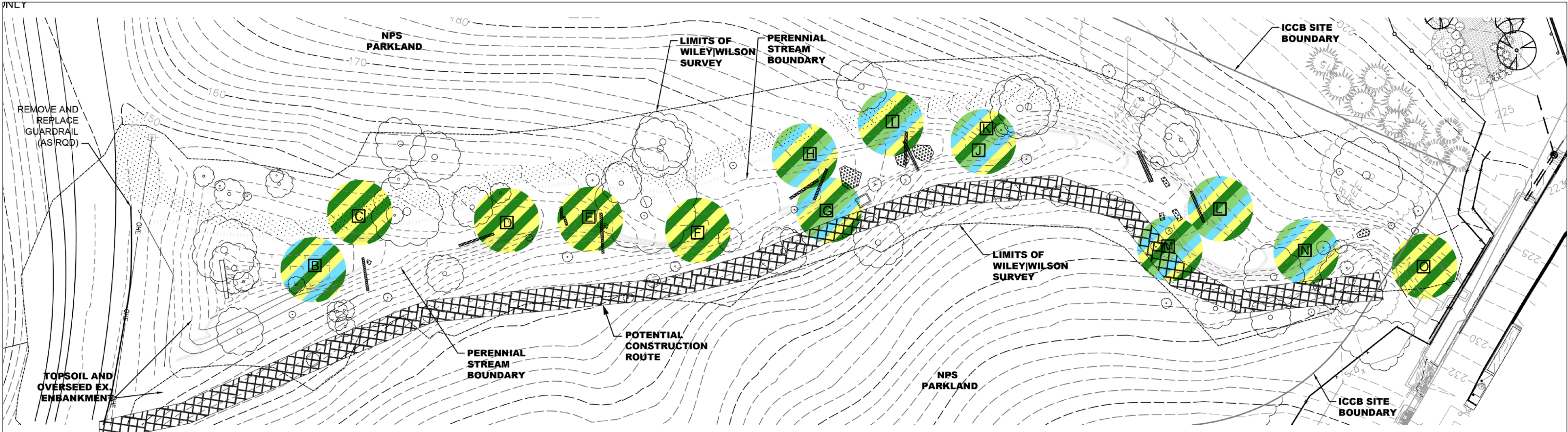


# Parkland Restoration Plan Environmental Assessment

Glen Echo Park - Public Scoping Meeting February 27, 2018

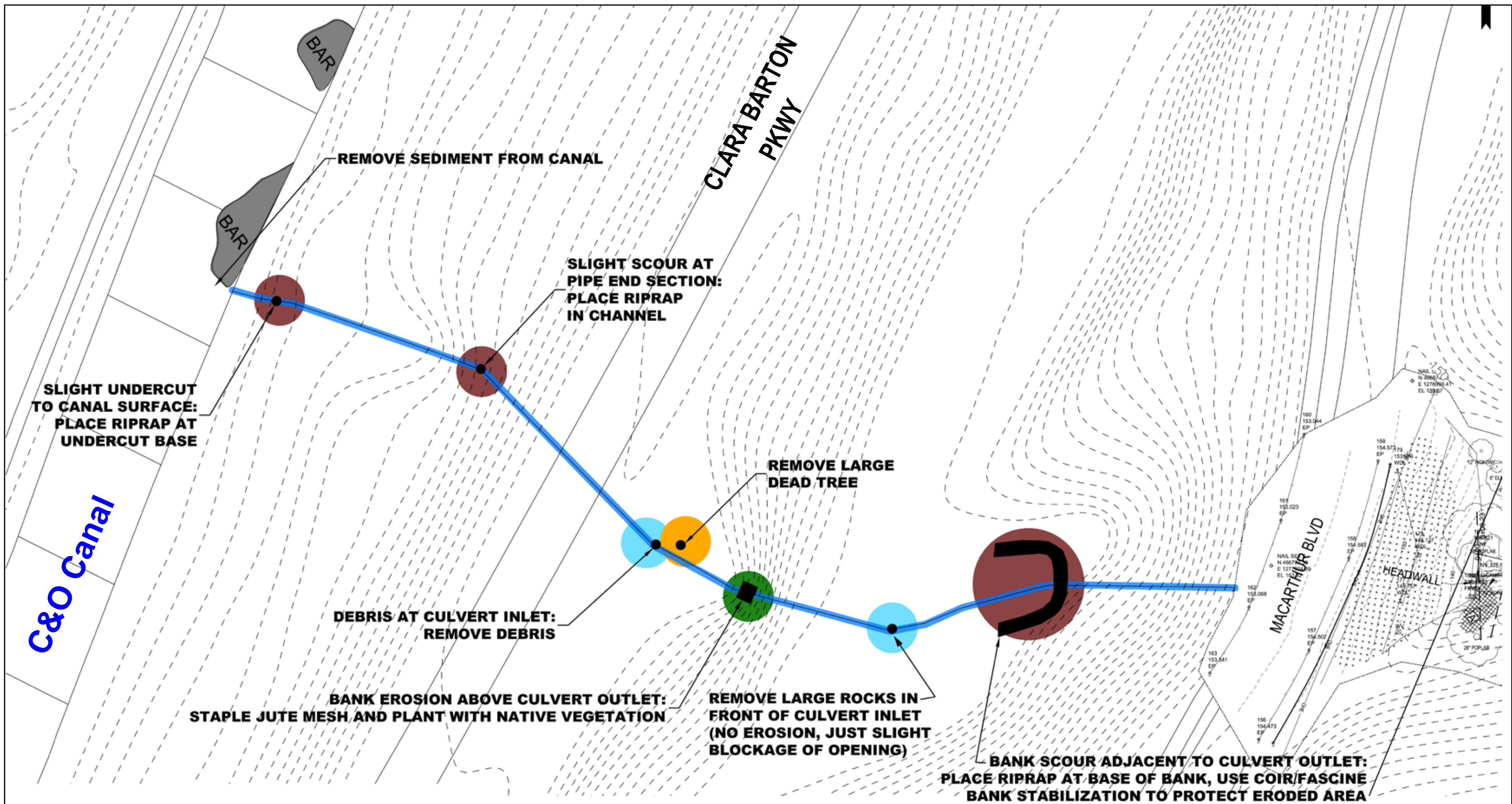
## Alternative Concept: Midsite Channel

### East of MacArthur Blvd



- Stabilize undercut trees
- Remove tree debris blocking channel
- Use sandy clay backfill with native soils compacted within coir blocks to build up bank slope
- Stabilize with native vegetation plantings
- Reform rock step pools

### West of MacArthur Blvd



- Remove dead tree
- Remove large rocks and debris blocking culverts
- Remove sediment from C&O Canal
- Plant with native vegetation
- Use riprap to restore bank scour areas



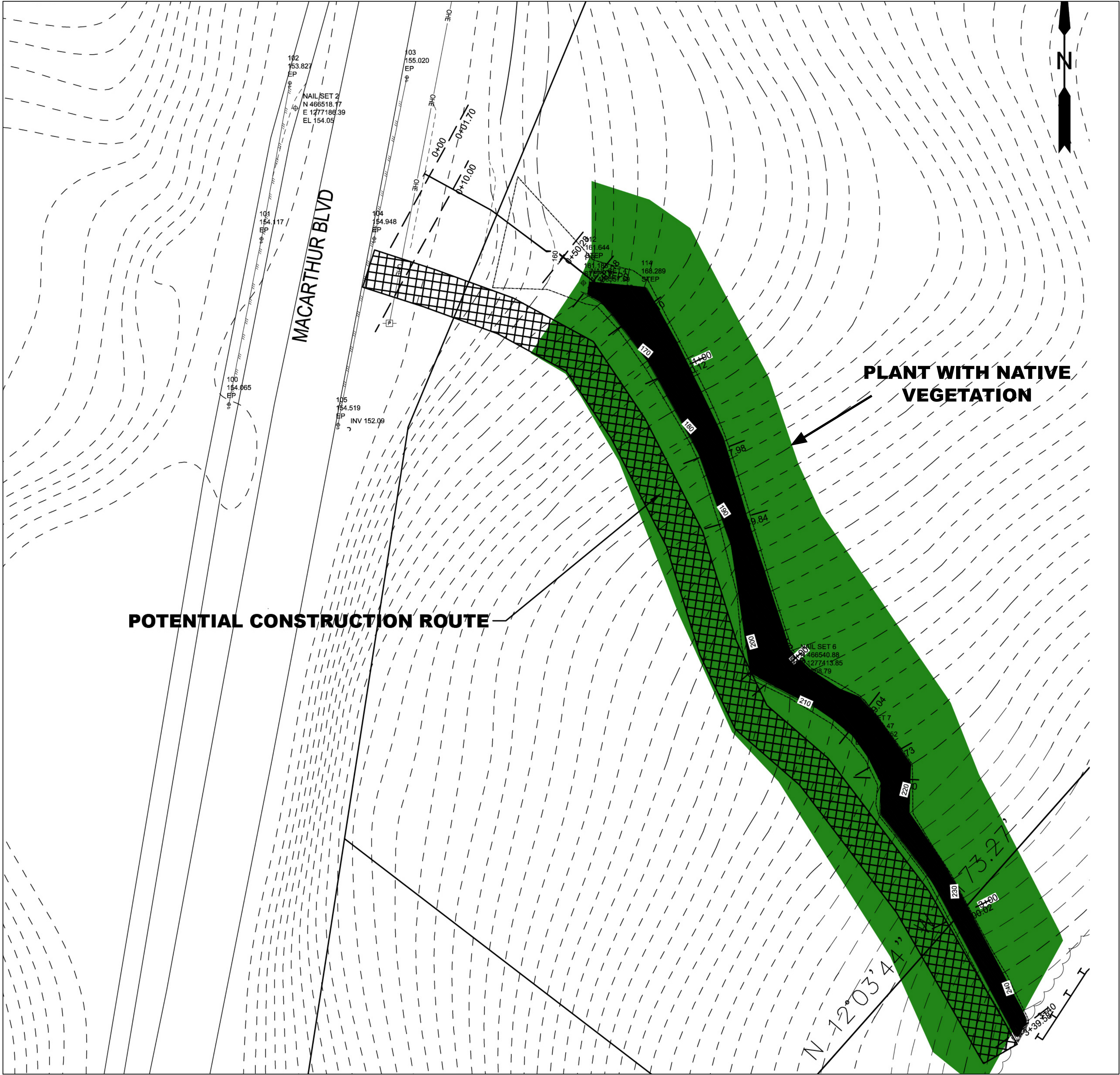
# Parkland Restoration Plan Environmental Assessment

Glen Echo Park - Public Scoping Meeting February 27, 2018



## Alternative Concept: Southwest Channel

### East of MacArthur Blvd



Plant channel and potential construction route with native shrubs and trees as needed

Construct series of 14 timber wale bulkheads across eroded gully



# Parkland Restoration Plan Environmental Assessment

Glen Echo Park - Public Scoping Meeting February 27, 2018



# Historic Resources



**LEGEND**

- Project Site
- Draft Area of Potential Effect (APE)
- Chesapeake & Ohio Canal National Historical Park Historic District
- Clara Barton Parkway



# Parkland Restoration Plan Environmental Assessment

Glen Echo Park - Public Scoping Meeting February 27, 2018



## How to Comment

**Please identify any ideas, issues, or concerns you may have regarding the proposed project**

### During this Meeting

- Fill out a comment form

### After this Meeting

- **Submit comments online by March 18, 2018 at <https://parkplanning.nps.gov/iccb>**
- Mailed comments must be postmarked by March 18, 2018 to receive consideration and sent to:

Superintendent  
Attn: ICC-B Environmental Assessment  
George Washington Memorial Parkway  
700 George Washington Memorial Parkway  
c/o Turkey Run Park  
McLean, VA 22101

**Please Note:** Before including your address, phone number, e-mail address, or other personal identifying information in your comment, you should be aware that your entire comment – including your personal identifying information – may be made publicly available at any time. While you can ask us in your comment to withhold your personal identifying information from public review, we cannot guarantee that we will be able to do so.