

SECTION 106 REVIEW | 02-13-2018

National World War I Memorial Pershing Park



ARCHITECTS



Land

DAVID RUBIN

Collective

AGENDA

INTRODUCTION

REVIEW OF PROJECT TO DATE AND PRESENTATION OF CURRENT DESIGN (15 MINUTES)

REVIEW OF DETERMINATION OF EFFECTS (15 MINUTES)

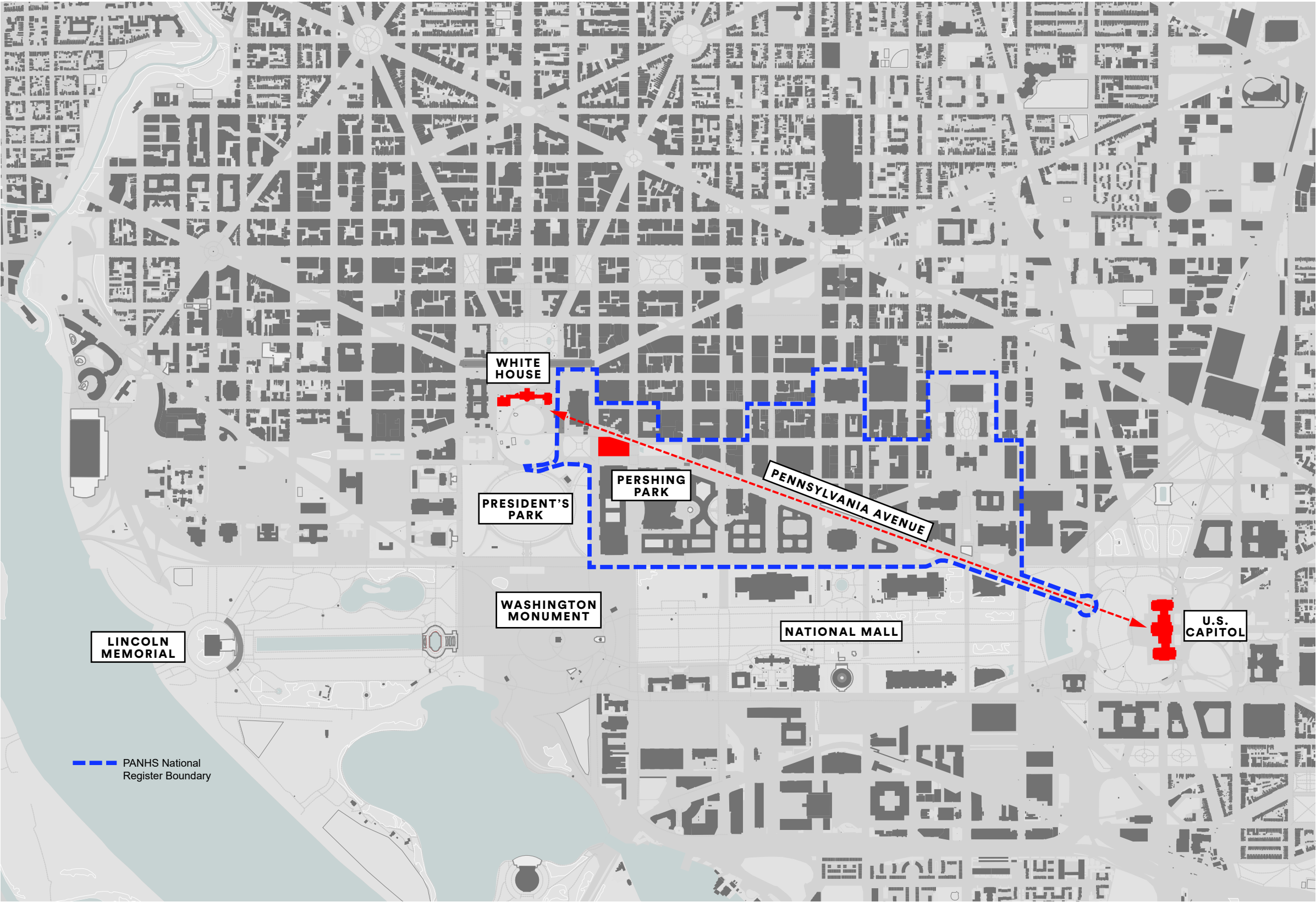
IDENTIFICATION OF MITIGATION (45 MINUTES)

NEXT STEPS (15 MINUTES)

MEETING PROTOCOL

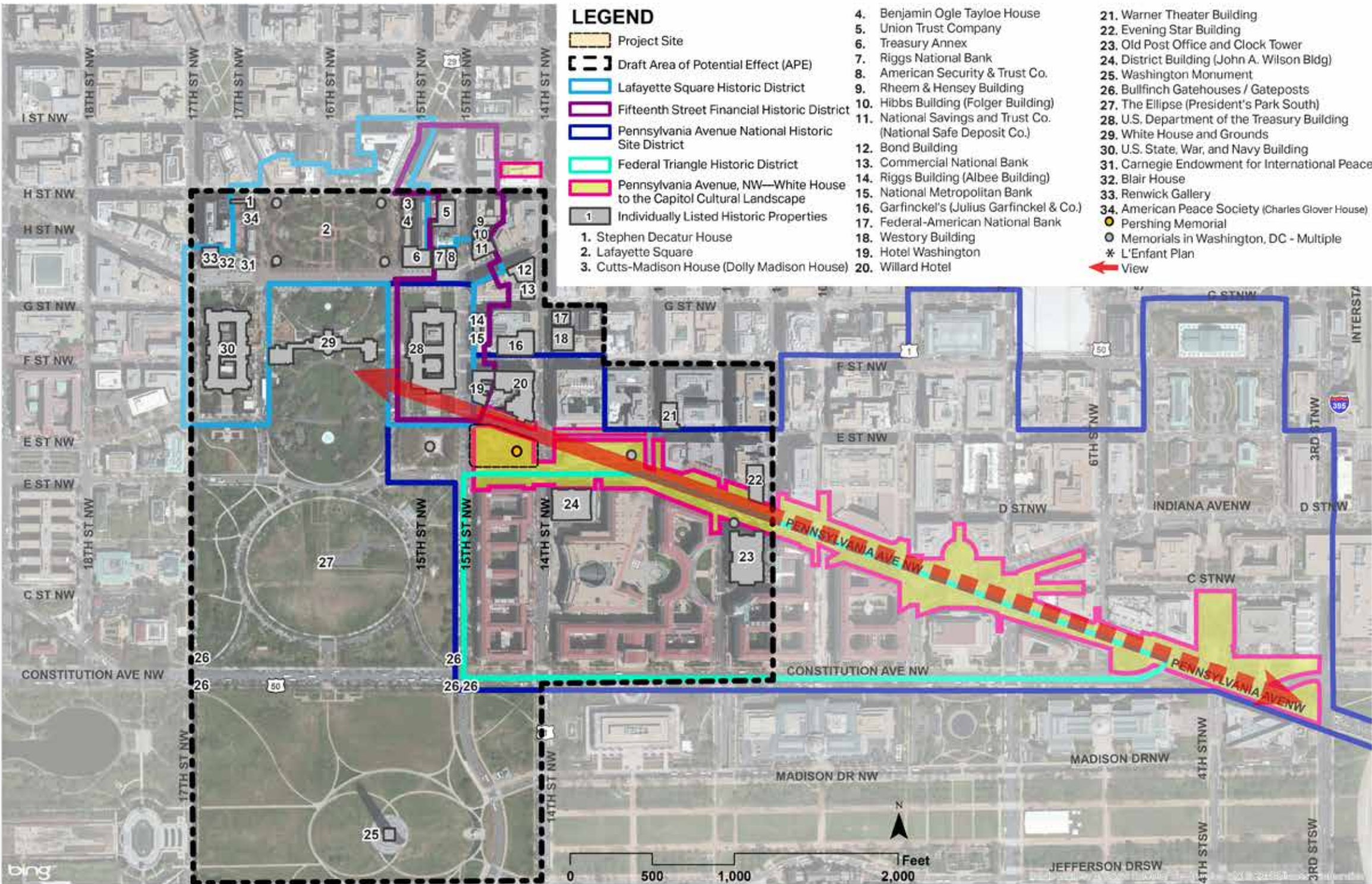
- IDENTIFY YOURSELF PRIOR TO MAKING ANY COMMENTS
- BE COURTEOUS OF OTHERS (DO NOT INTERRUPT) AND AVOID PERSONAL ATTACKS
- LIMIT YOUR COMMENTS TO THE AGENDA ITEM THAT IS BEING DISCUSSED
- IF YOU BELIEVE A RELEVANT ISSUE SHOULD BE RAISED THAT IS NOT ON THE AGENDA, ASK THE FACILITATOR IF IT CAN BE ADDED
- WE EXPECT TO HEAR FROM ALL ATTENDEES; DO NOT JUST BE AN OBSERVER

SITE LOCATION



AREA OF POTENTIAL AFFECTS

- Pennsylvania Avenue is the ceremonial physical and visual corridor connecting the Capitol to the White House
- The site is located within Pennsylvania Avenue National Historic Site
- Pennsylvania Avenue streetscape materials and alignments have been integrated into the design of the park



EXISTING SITE PHOTOGRAPHS

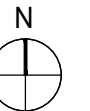


This is a highly detailed landscape architectural site plan for a large, irregularly shaped site. The plan features a central rectangular area with a grid pattern, surrounded by various landscape elements including numerous circular tree symbols, rectangular building footprints, and winding paths. The site is bordered by a road on the top and right sides. The plan includes extensive annotations, dimensions, and labels for various features and materials.

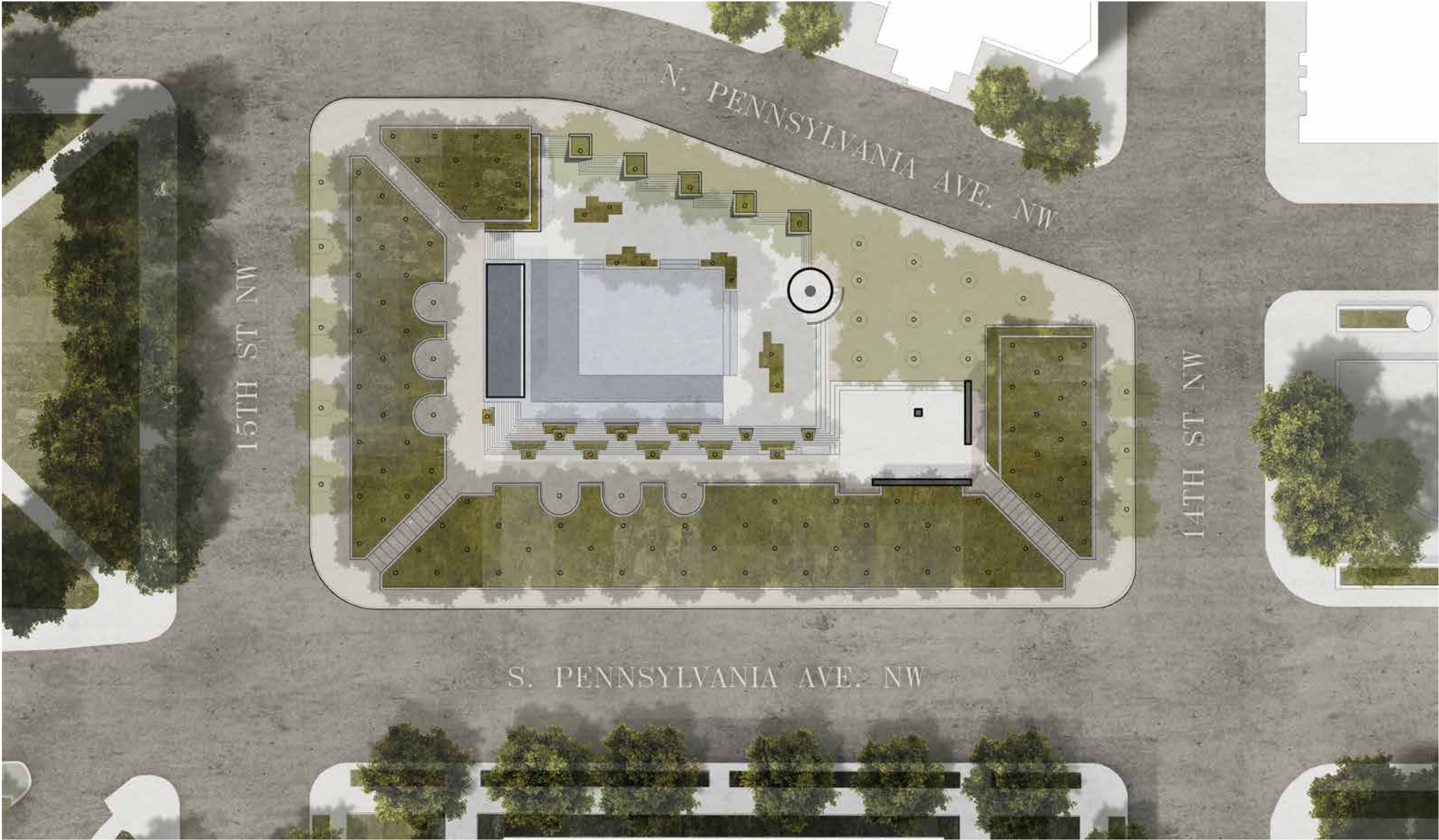
Key Features and Annotations:

- Central Area:** A large rectangular area with a grid pattern, possibly representing a lawn or paved plaza. It is surrounded by a series of rectangular building footprints and smaller rectangular structures.
- Tree Symbols:** Numerous circular symbols with internal patterns, representing different types of trees. Some are labeled with codes like "T-1", "T-2", "T-3", etc.
- Paths and Walkways:** Winding lines representing paths and walkways, some labeled with "P" and "W".
- Boundaries and Roads:** The site is bordered by a road on the top and right sides. The boundary is marked with a dashed line and labeled "PROPERTY LINE".
- Dimensions and Annotations:** Extensive use of dimensions and labels throughout the plan, indicating specific measurements and material specifications.
- Materials and Finishes:** Various hatching and shading patterns used to indicate different materials and finishes, such as "GRAVEL", "ASPHALT", "CONCRETE", etc.
- Structural Elements:** Rectangular footprints of buildings and smaller structures, some with internal details like doors and windows.
- Topography:** Contour lines and elevations are shown, indicating the site's topography.
- Orientation:** A north arrow is located in the upper right corner of the plan.

The plan is a comprehensive technical drawing that provides a detailed view of the proposed landscape design, including all structural, planting, and circulation elements.



JUNE 2017 CONCEPT



JUNE 2017 RESTORED POOL CONCEPT

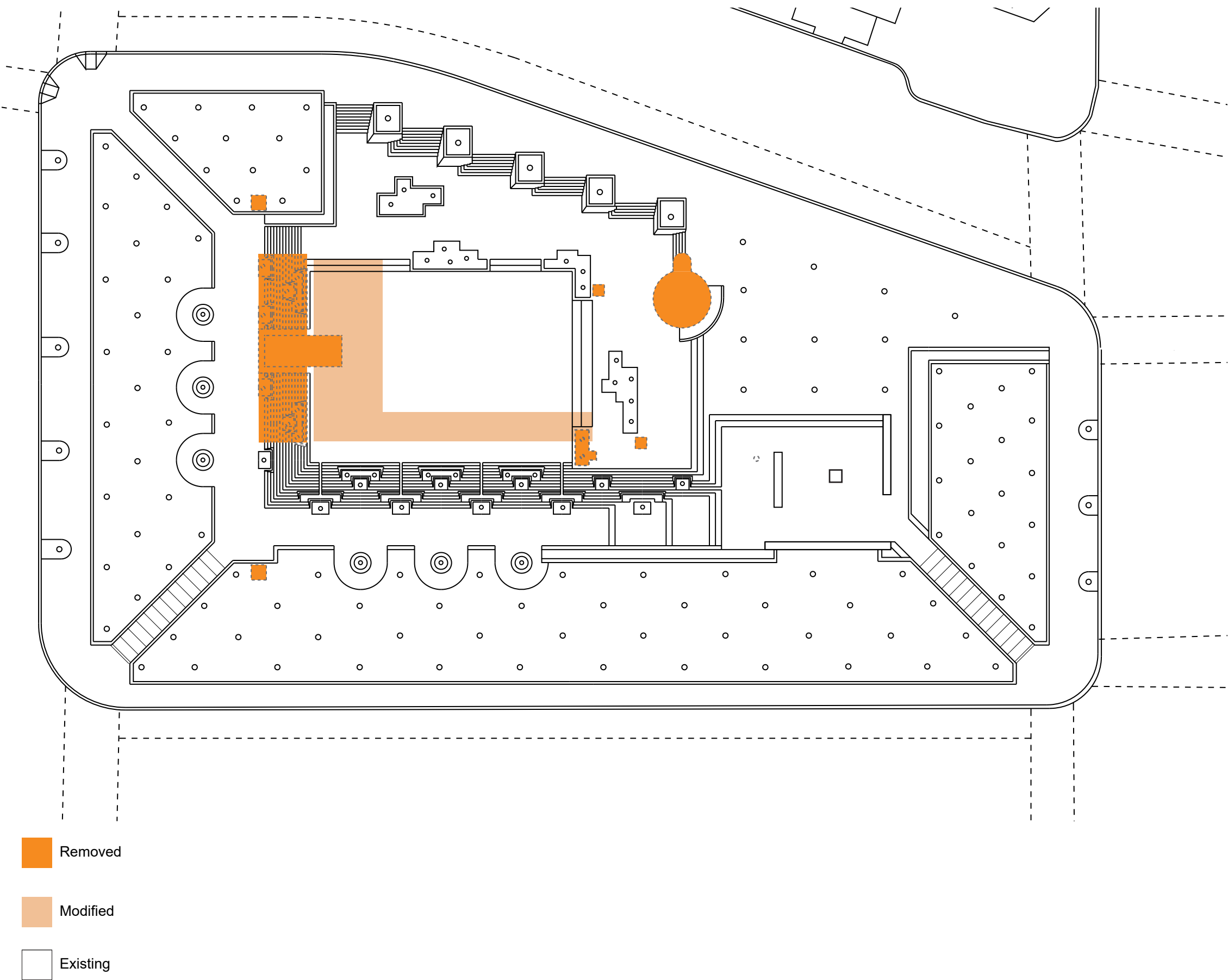
ASSESSMENT OF EFFECTS

The June 2017 concept would result in the following:

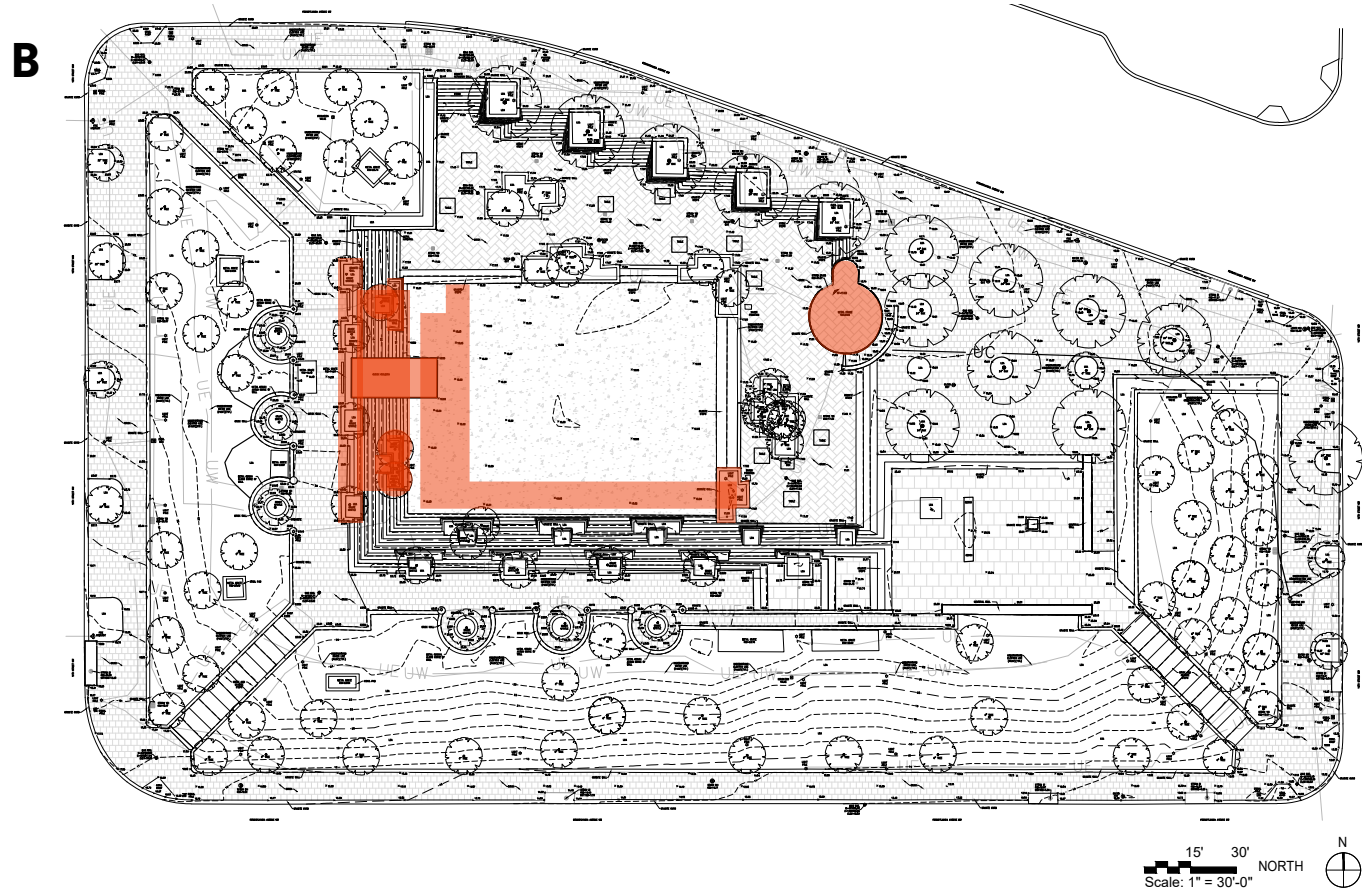
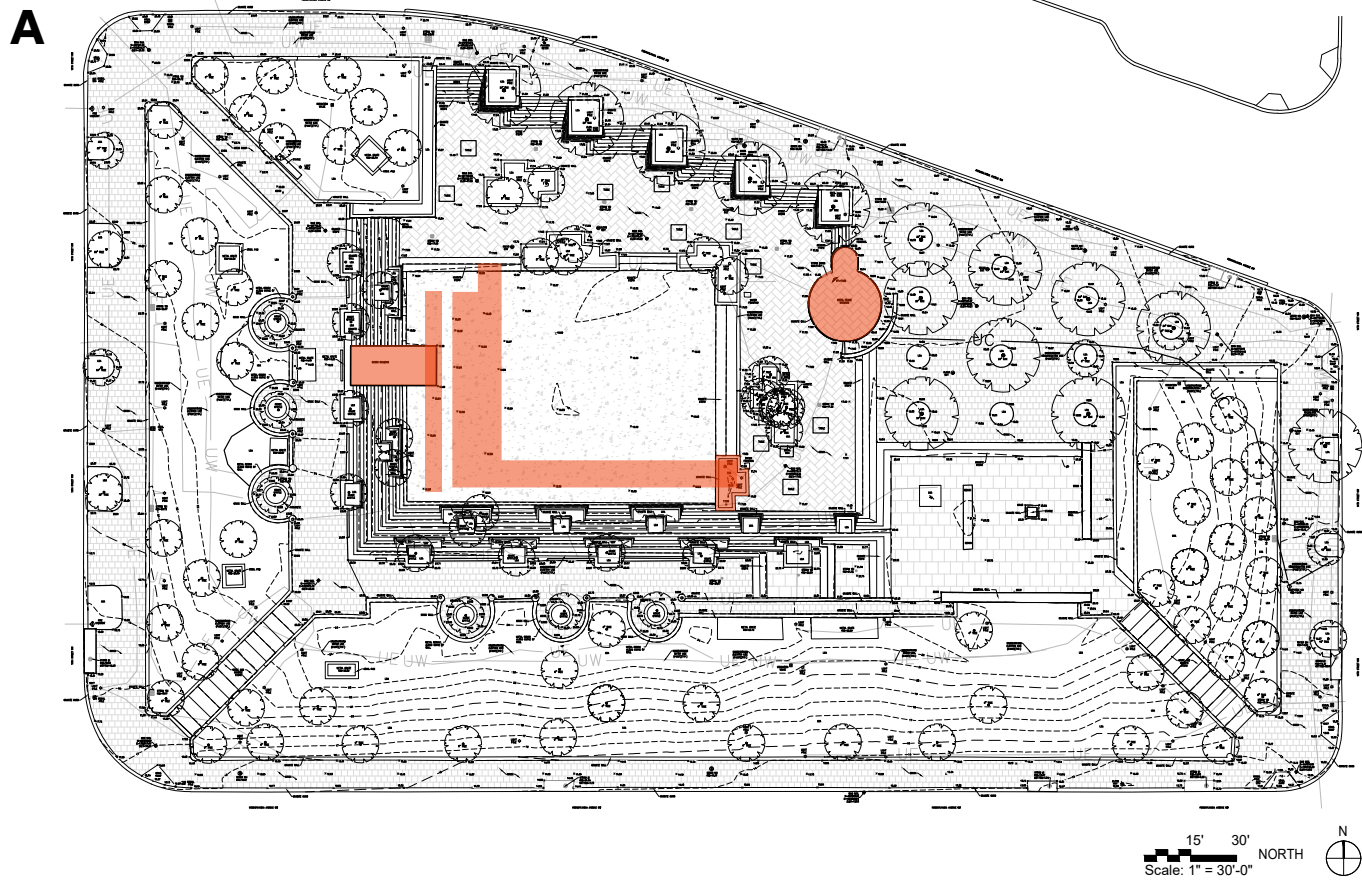
No adverse effect on the **L’Enfant Plan of the City of Washington**, the **Pennsylvania Avenue National Historic Site**, and the **Pennsylvania Avenue NW-White House to the U.S. Capitol Cultural Landscape**

Adverse effect on **Pershing Park** due to changes to the spatial organization, views and vistas, built features, water features, and vegetation:

- Loss of the cascade fountain, granite steps and planters along the western edge of the sunken plaza, as well as five specimen trees.
- Alteration of the spatial relationship between the upper and lower sections of the park.
- Insertion of a walkway through the water feature would alter its use and appearance, although the footprint of the pool basin would be retained.
- Replacement of the existing kiosk with a flagpole located on a circular plinth.
- Change of recreation use to no longer include ice skating

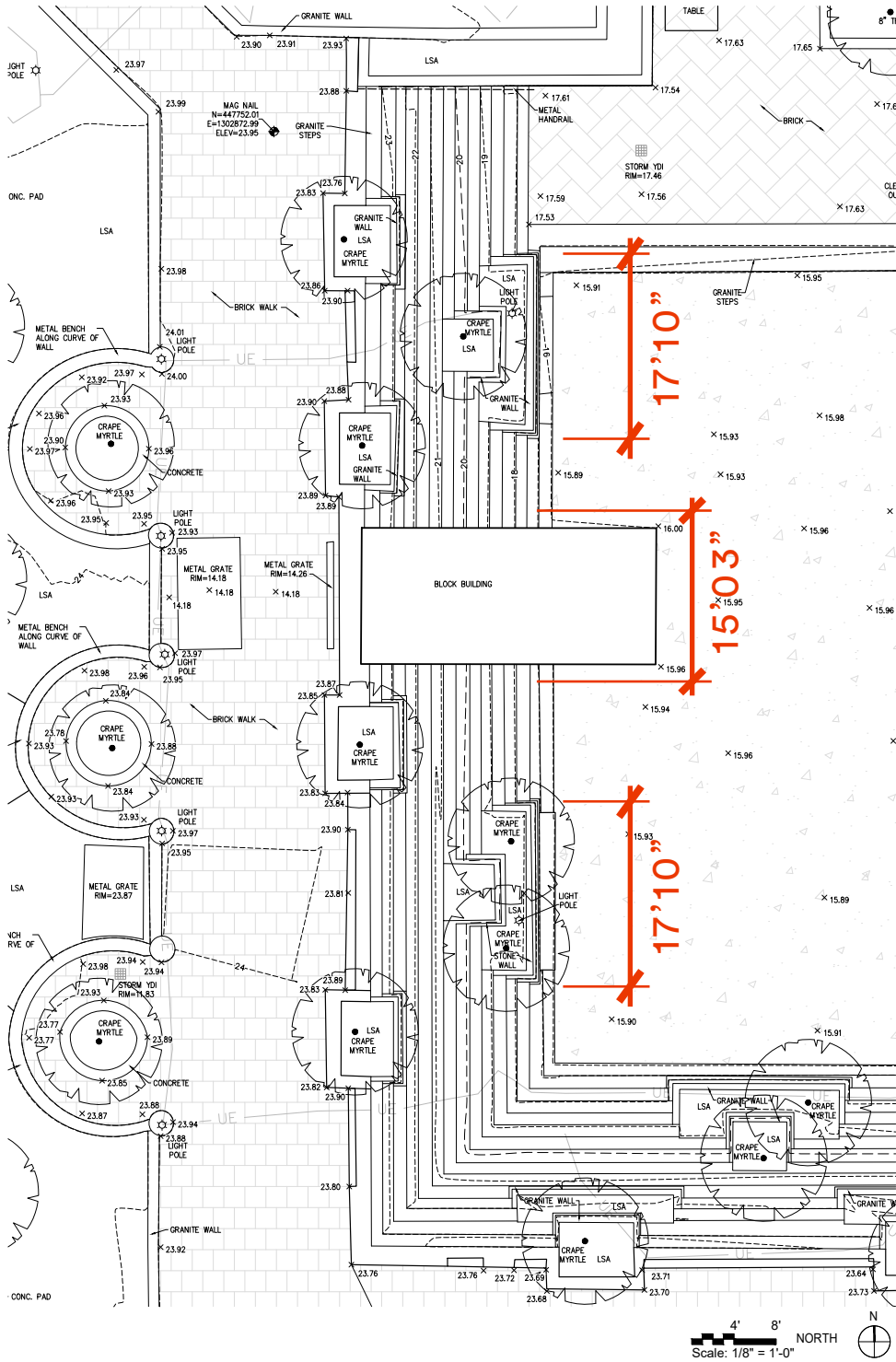


DESIGN OPTIONS



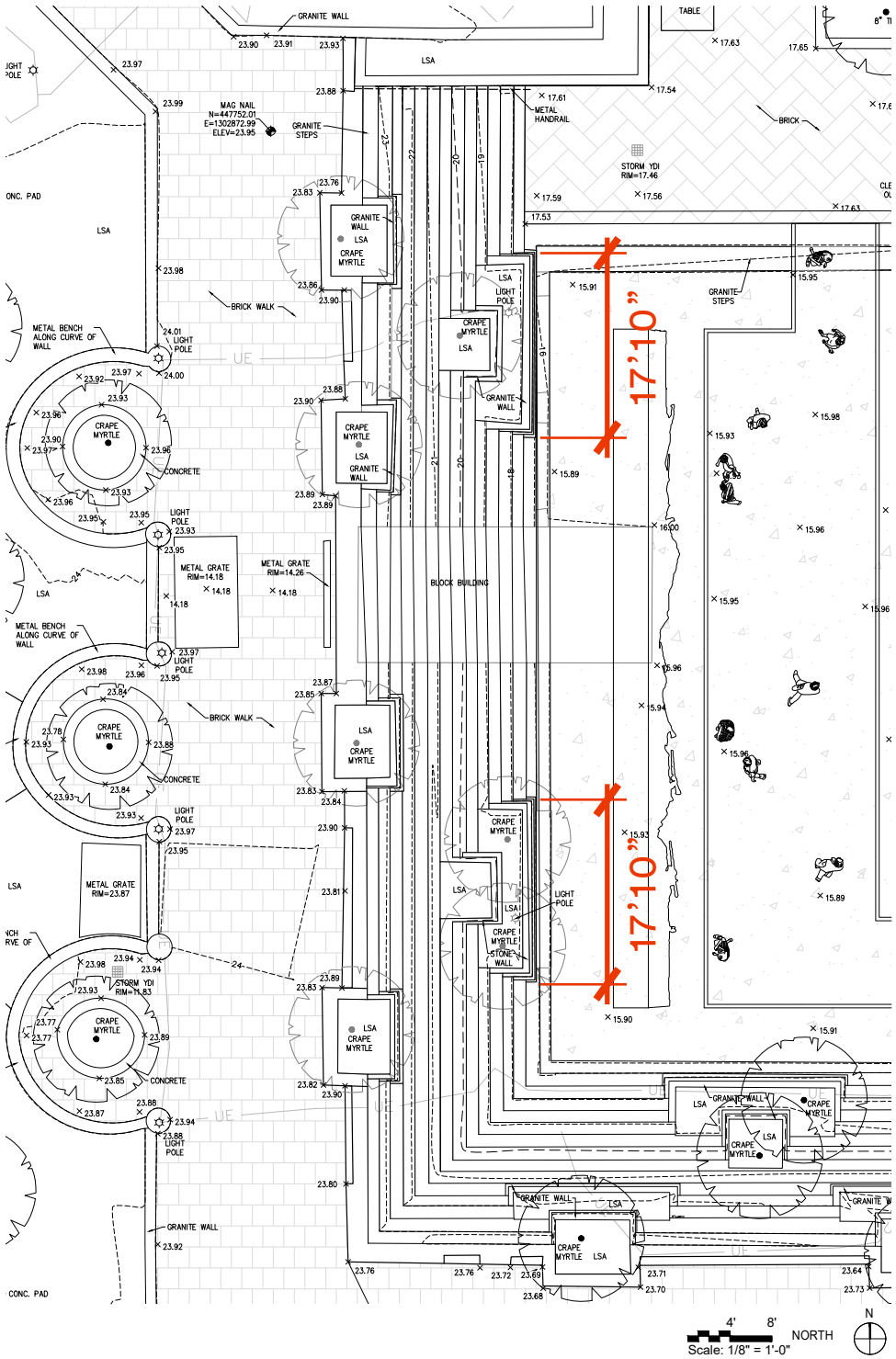
DESIGN OPTION COMPARISONS: IMPACT ON POOL ACCESS

EXISTING CONDITIONS



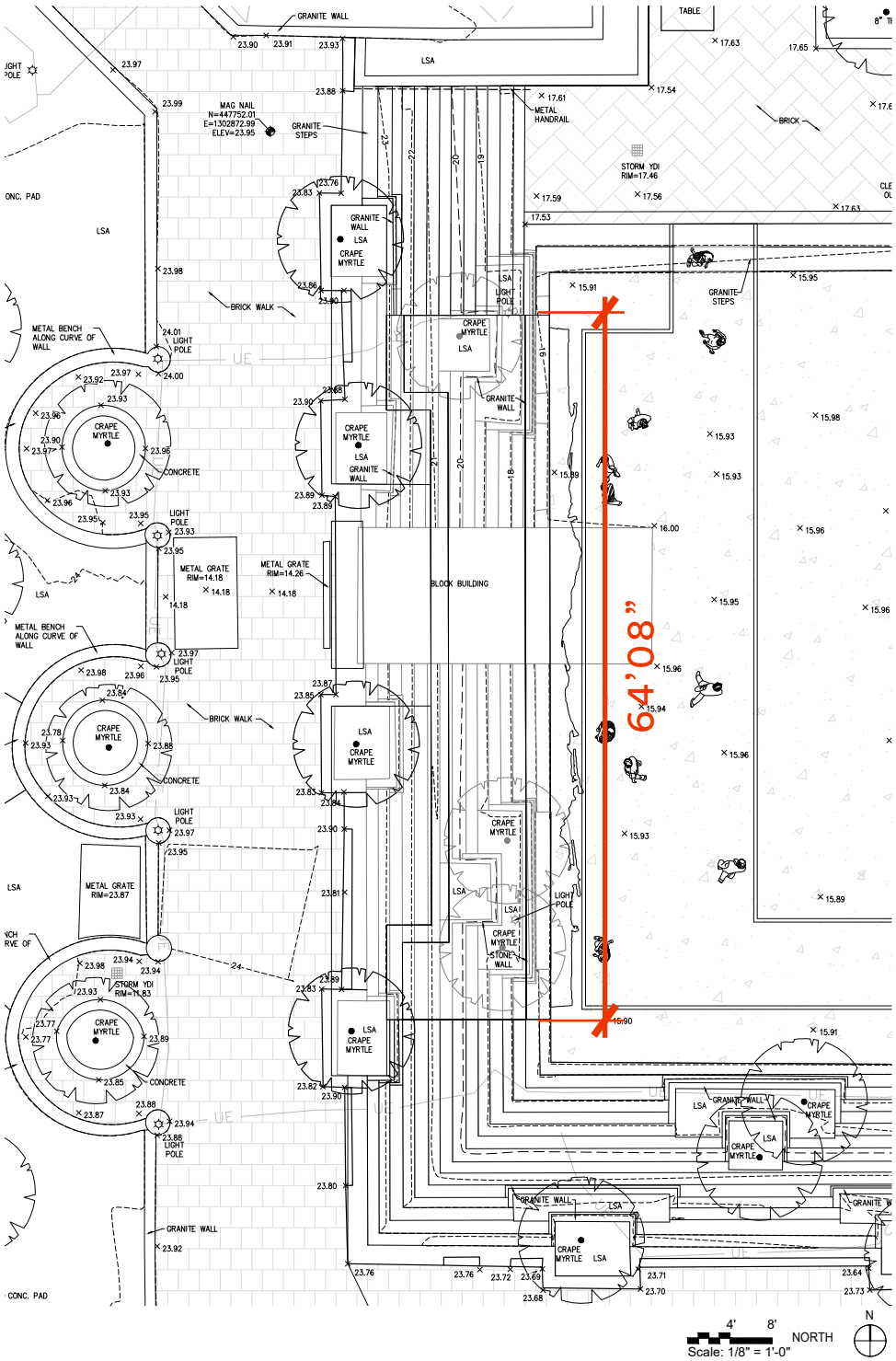
TOTAL NON-ACCESSIBLE POOL EDGE ON WESTERN TERRACE = 50'-11"

OPTION A - FREESTANDING WALL



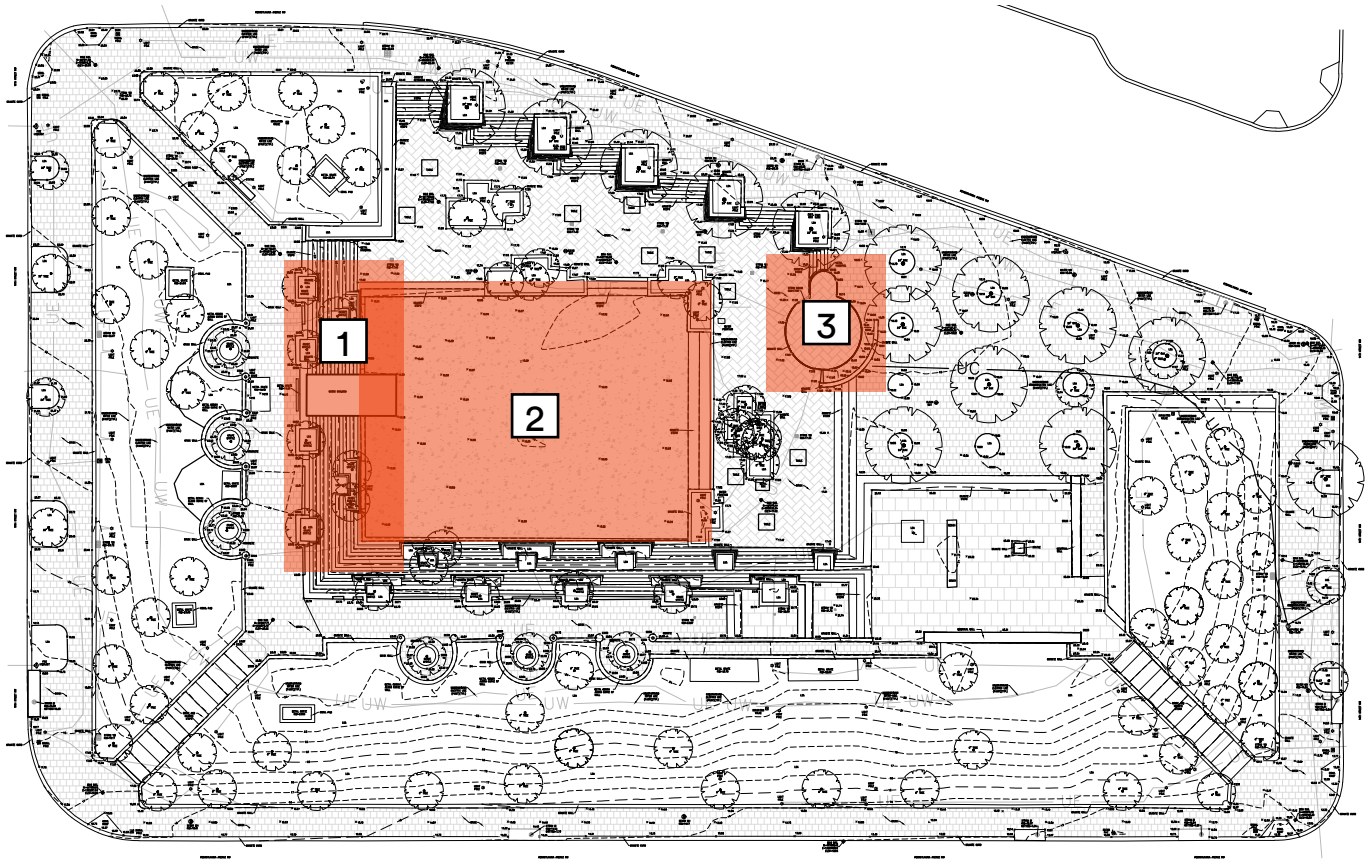
TOTAL NON-ACCESSIBLE POOL EDGE ON WESTERN TERRACE = 35'-8"

OPTION B - INTEGRATED WALL



TOTAL NON-ACCESSIBLE POOL EDGE ON WESTERN TERRACE = 64'-8"

AREAS OF STUDY



1. FOUNTAIN / WEST TERRACE



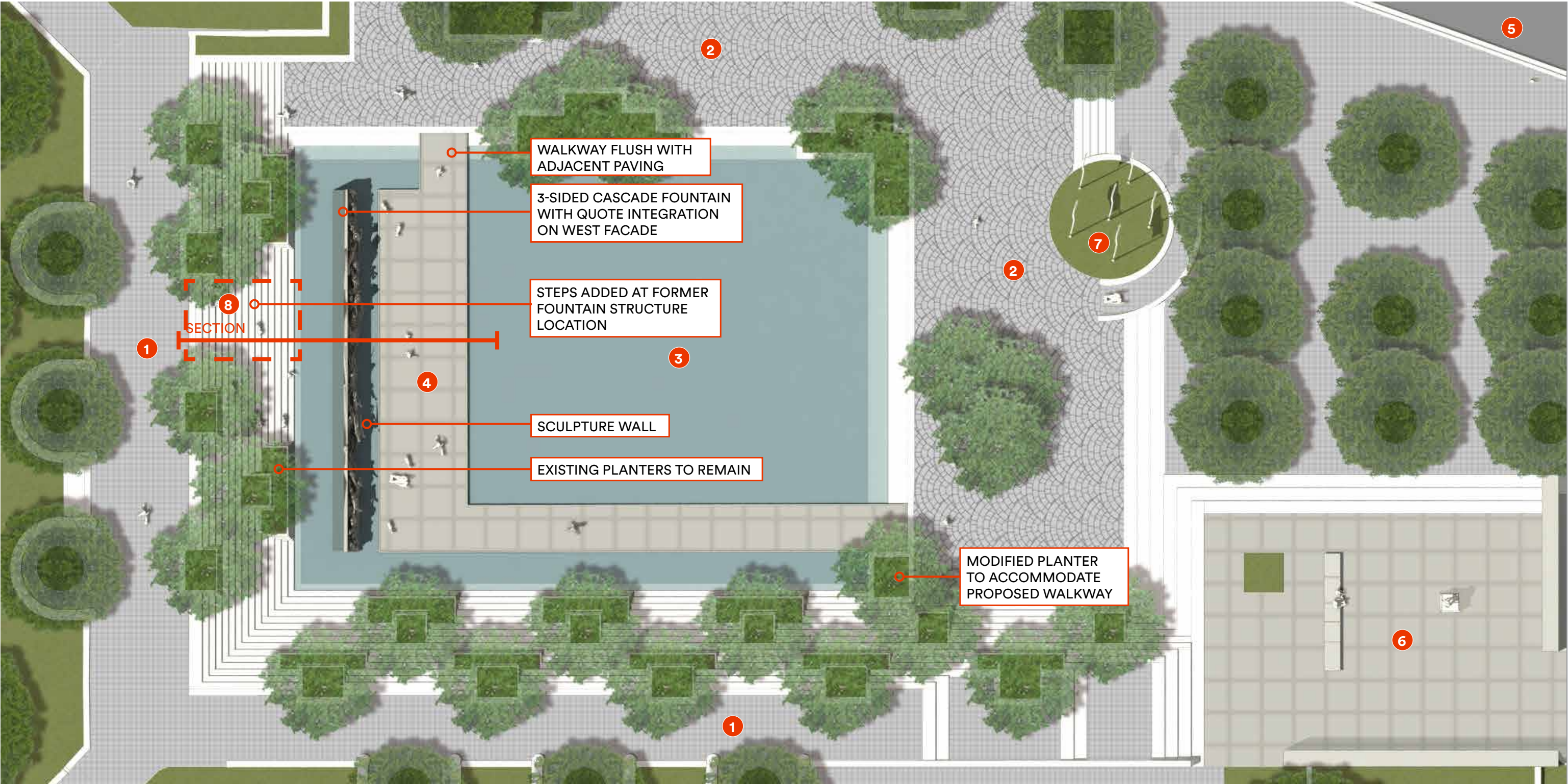
2. POOL



3. KIOSK



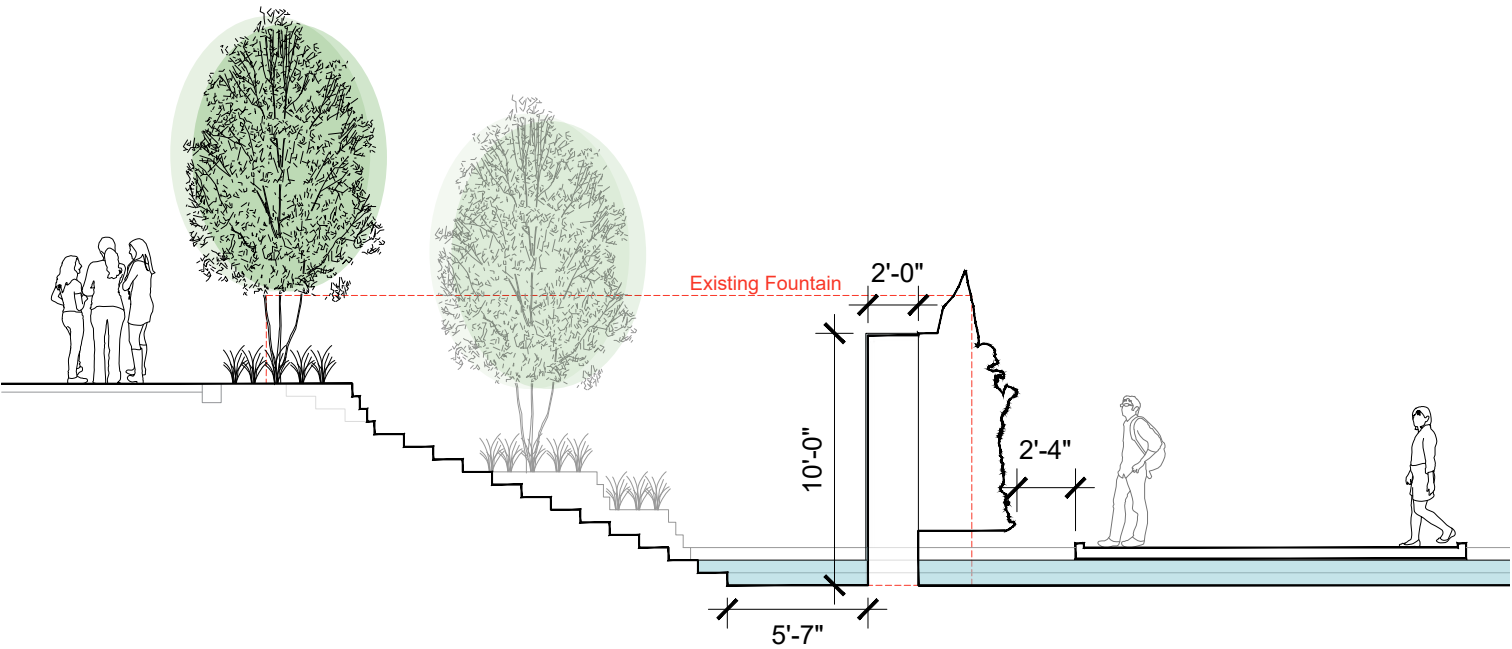
SCULPTURE WALL - OPTION A: FREESTANDING WALL



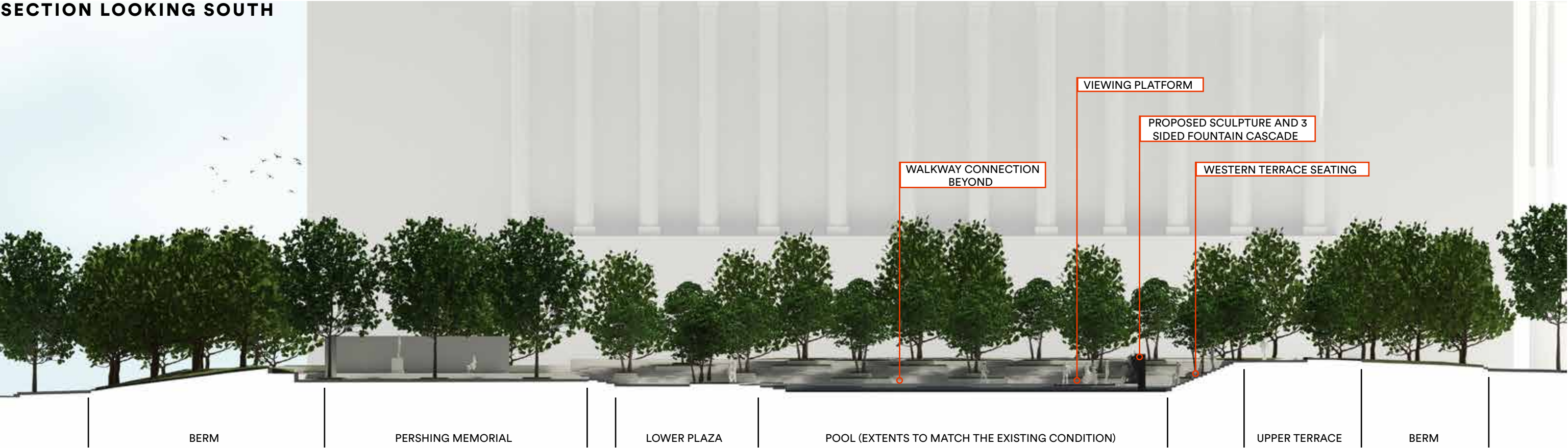
- 1 EXISTING UPPER WALKWAY
- 2 EXISTING LOWER PLAZA
- 3 FOUNTAIN BASIN
- 4 WALKWAY + VIEWING PLATFORM
- 5 PENNSYLVANIA AVENUE
- 6 EXISTING PERSHING MEMORIAL
- 7 FLAGSTAFF
- 8 CONTEMPLATIVE GATHERING



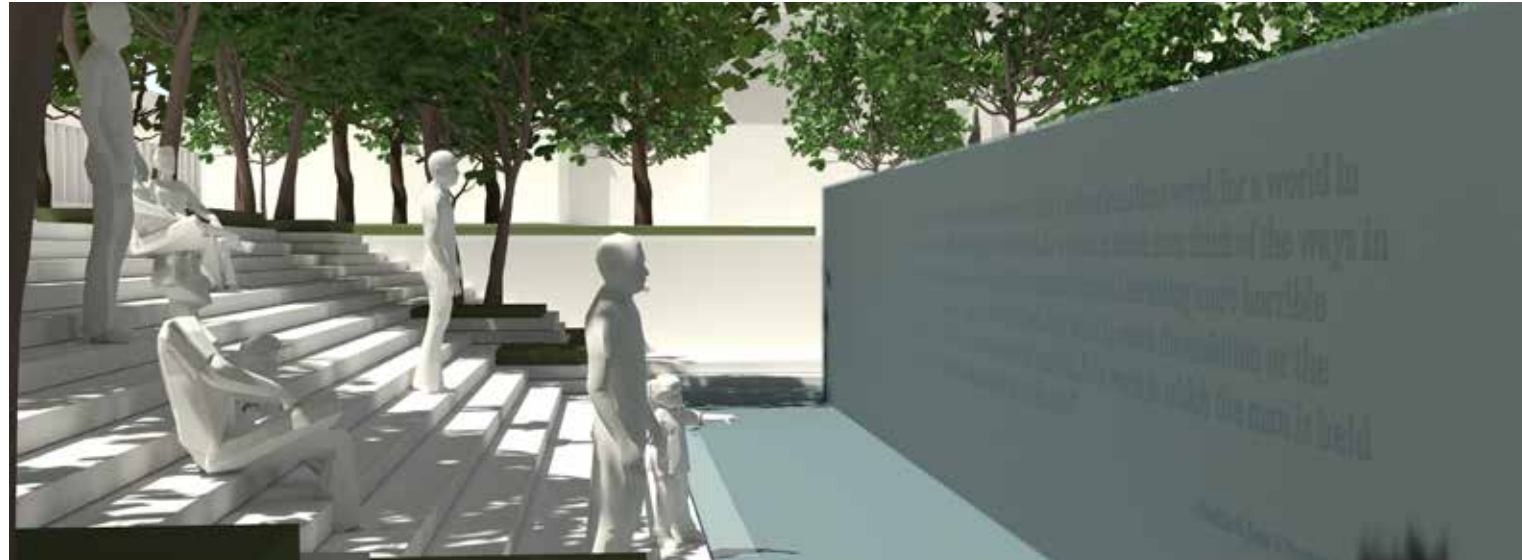
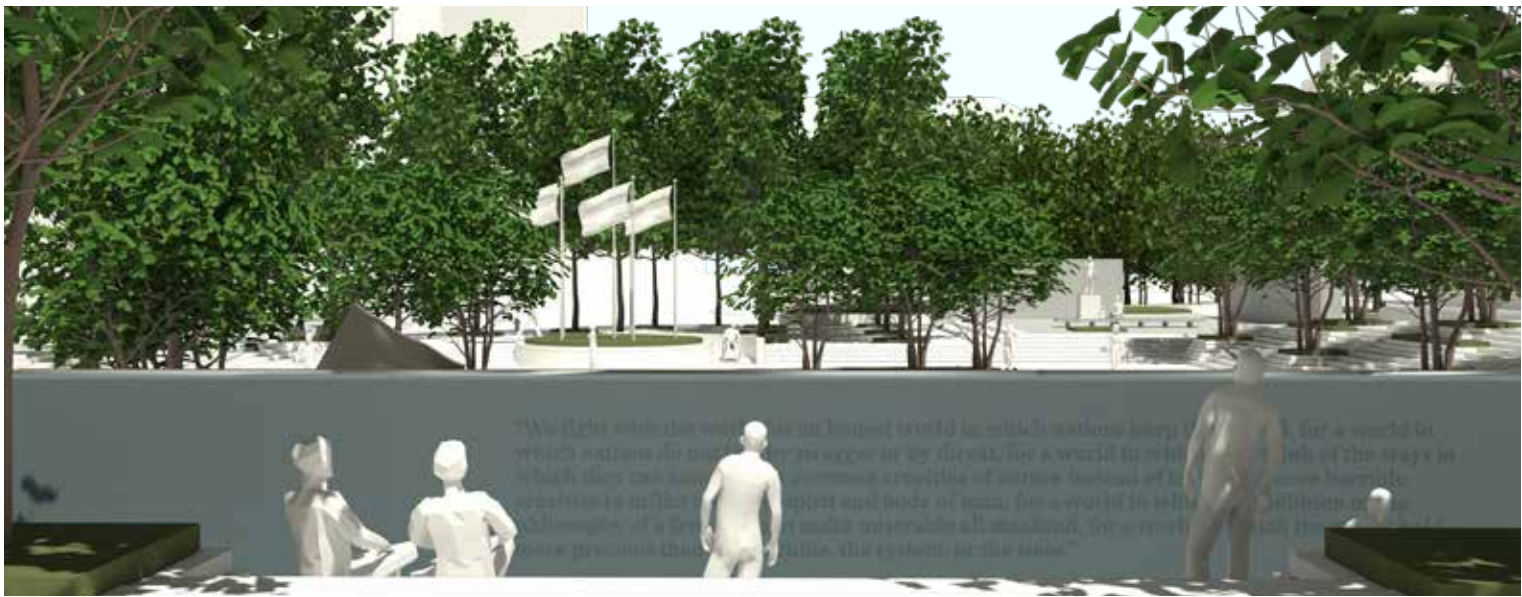
SCULPTURE WALL - OPTION A: FREESTANDING WALL



SECTION LOOKING SOUTH



SCULPTURE WALL - OPTION A: FREESTANDING WALL



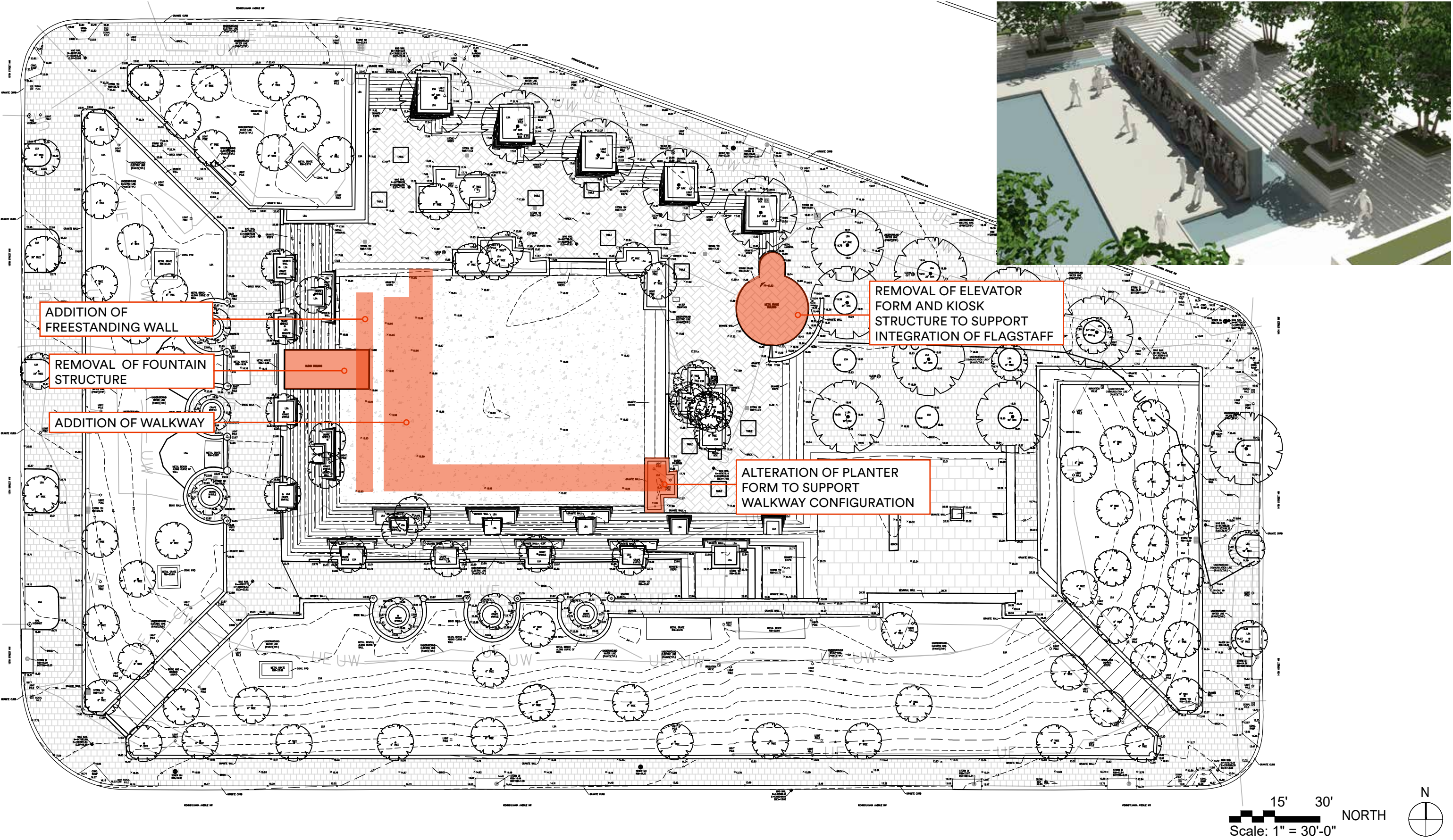
SCULPTURE WALL - OPTION A: FREESTANDING WALL



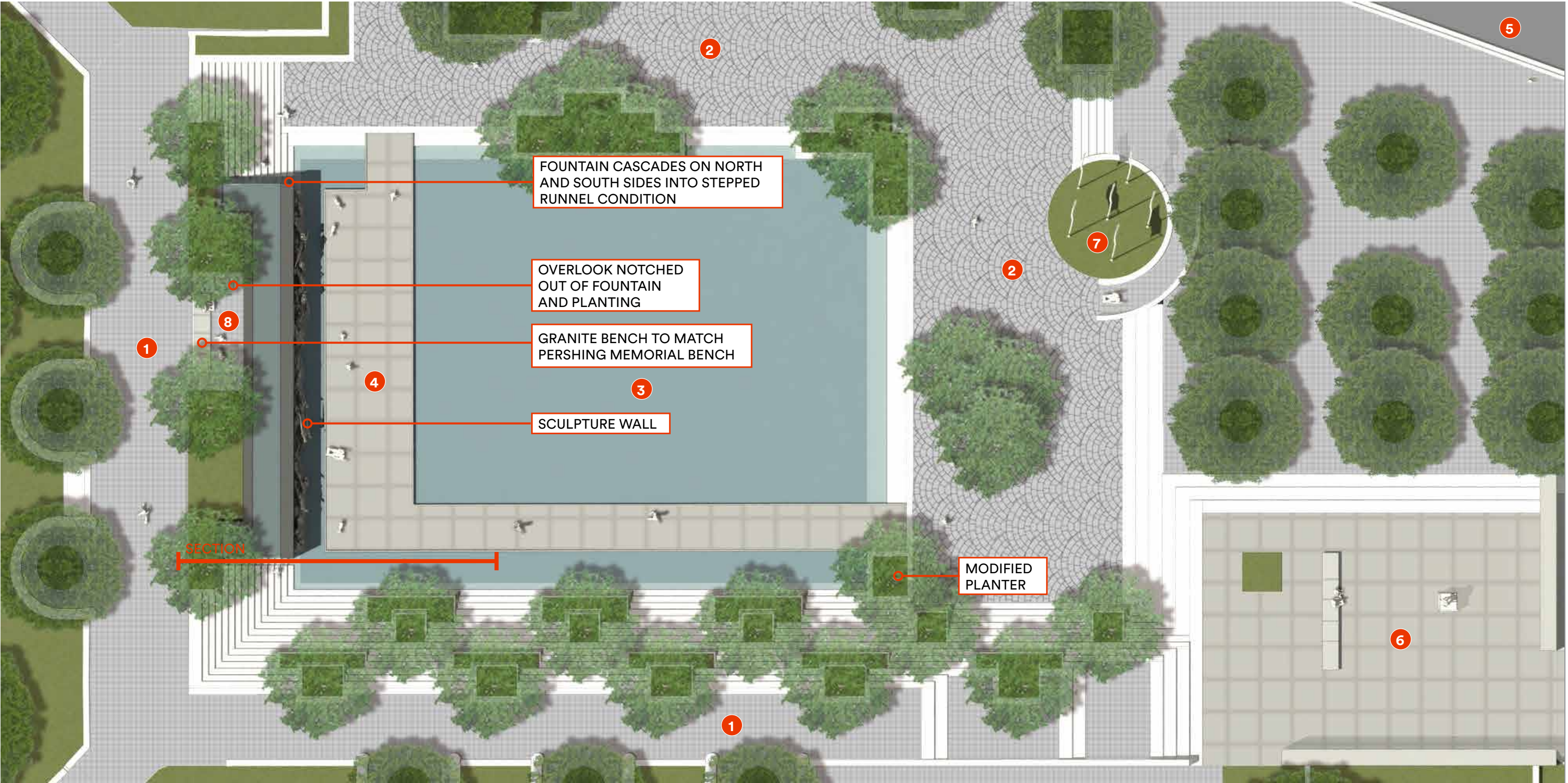
SCULPTURE WALL - OPTION A: FREESTANDING WALL



OPTION A: FREESTANDING WALL - ASSESSMENT OF EFFECTS

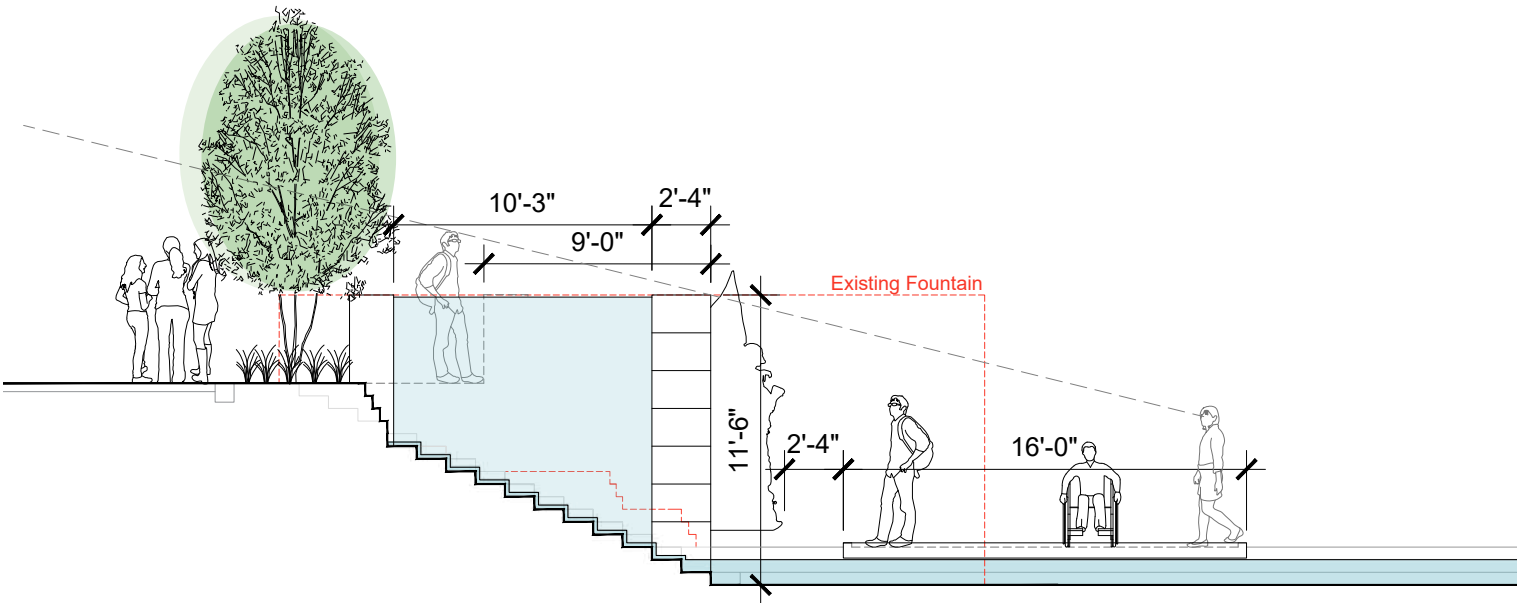


SCULPTURE WALL - OPTION B: INTEGRATED WALL

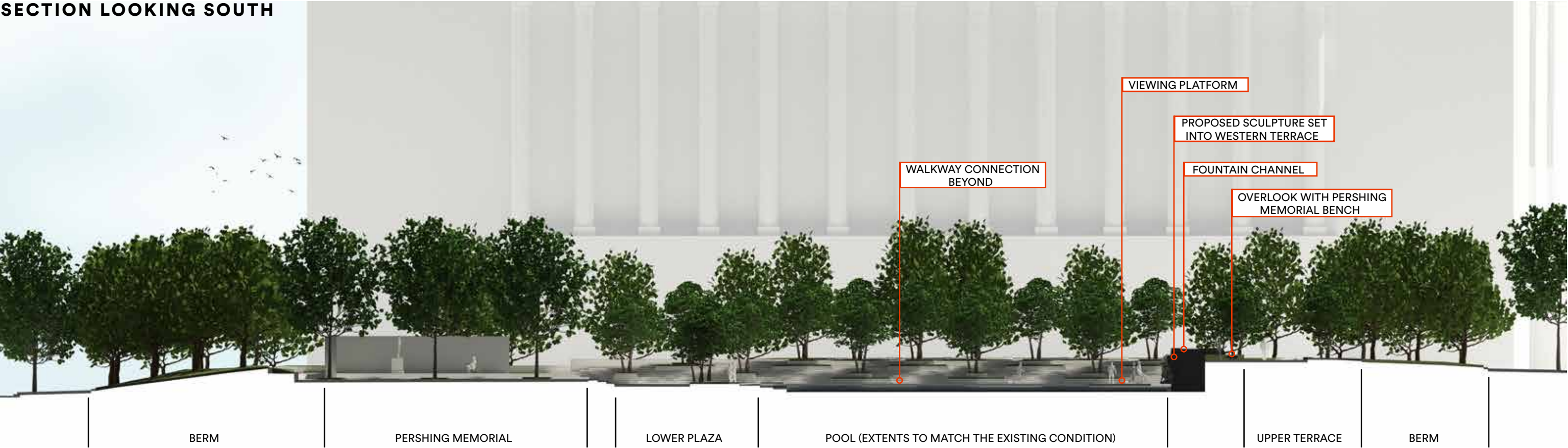


- 1 UPPER WALKWAY
- 2 LOWER PLAZA
- 3 FOUNTAIN BASIN
- 4 WALKWAY + VIEWING PLATFORM
- 5 PENNSYLVANIA AVENUE
- 6 PERSHING MEMORIAL
- 7 FLAGSTAFF
- 8 OVERLOOK

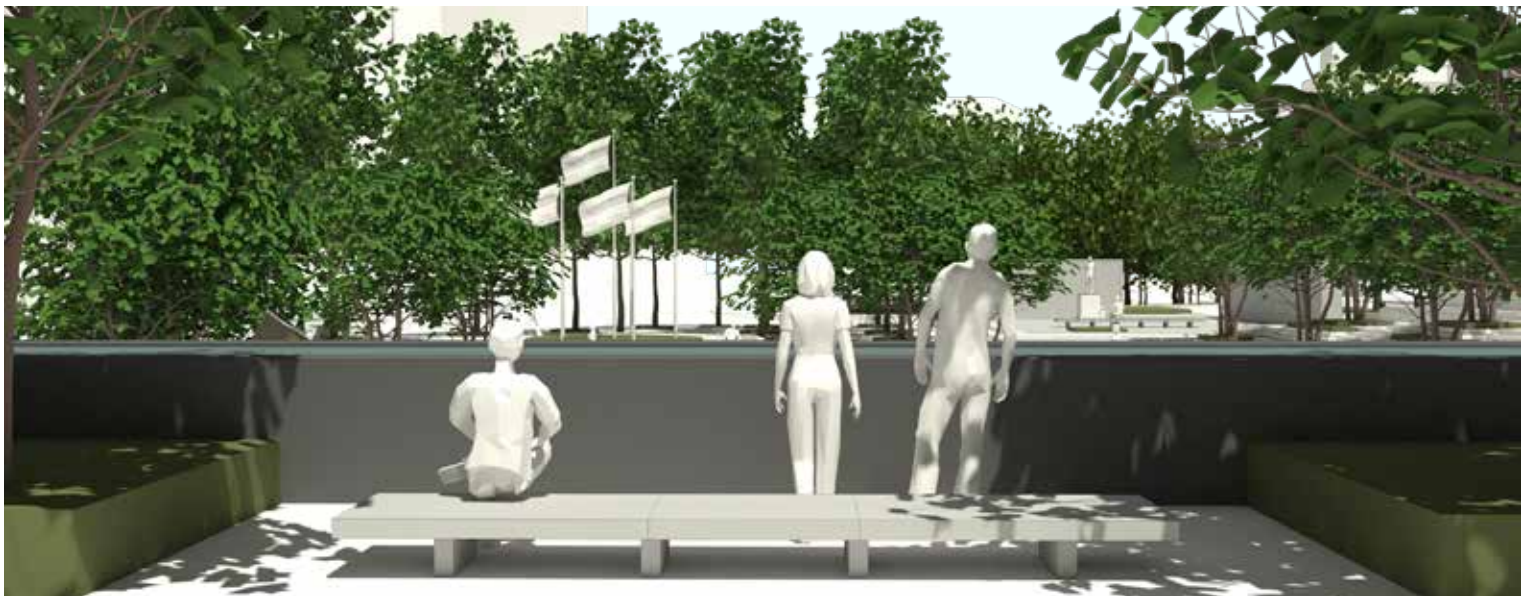
SCULPTURE WALL - OPTION B: INTEGRATED WALL



SECTION LOOKING SOUTH



SCULPTURE WALL - OPTION B: INTEGRATED WALL



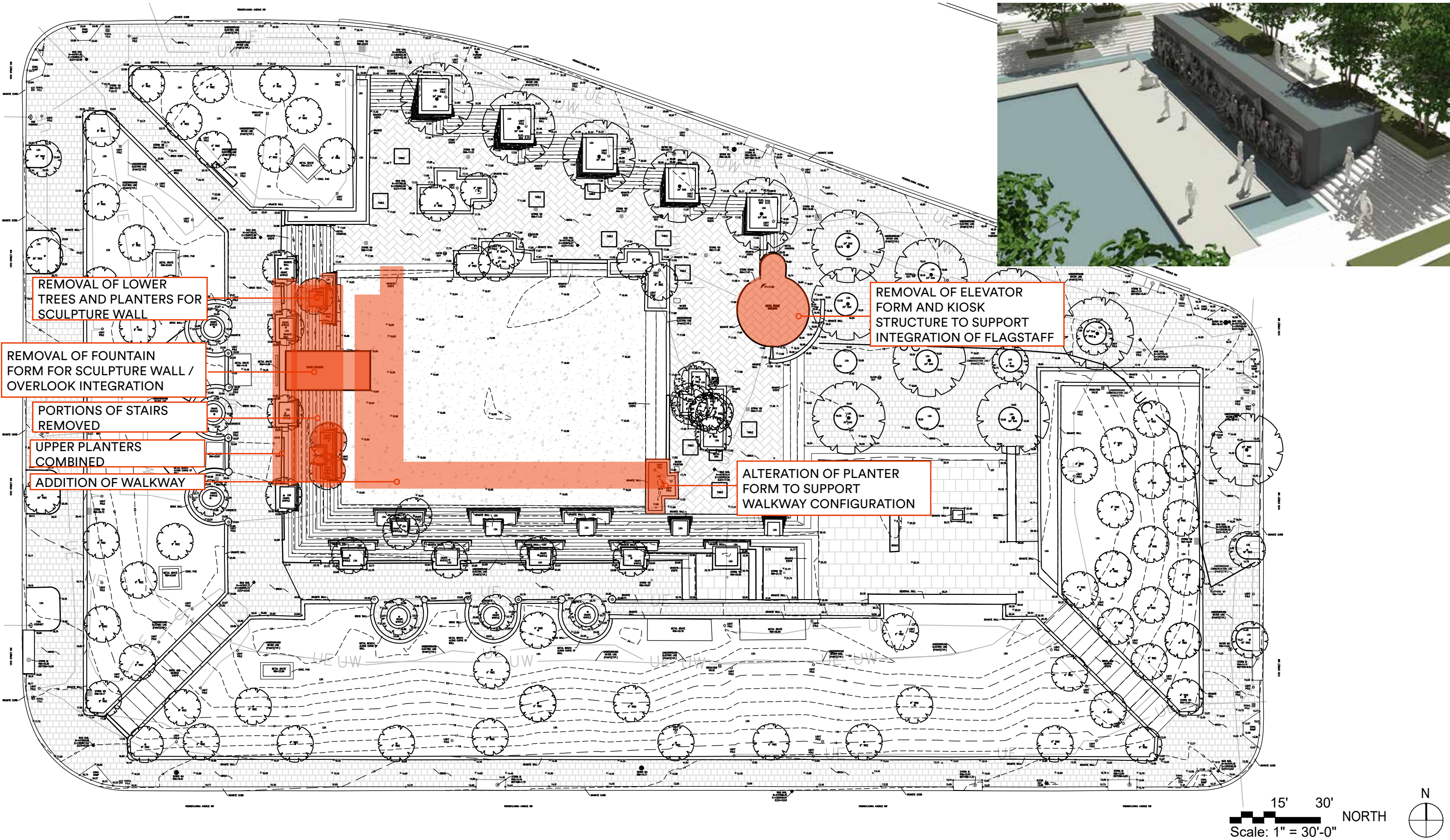
SCULPTURE WALL - OPTION B: INTEGRATED WALL



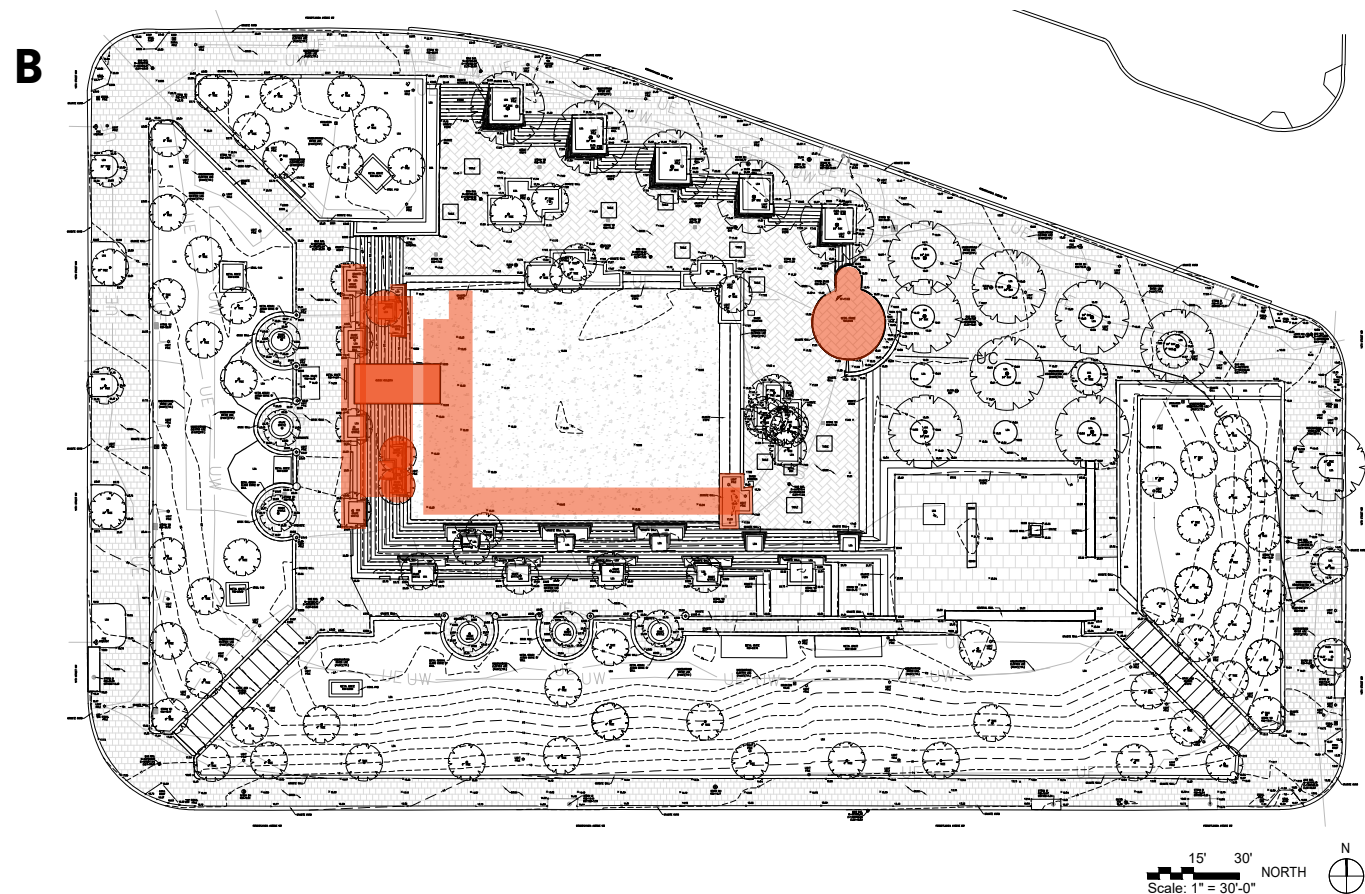
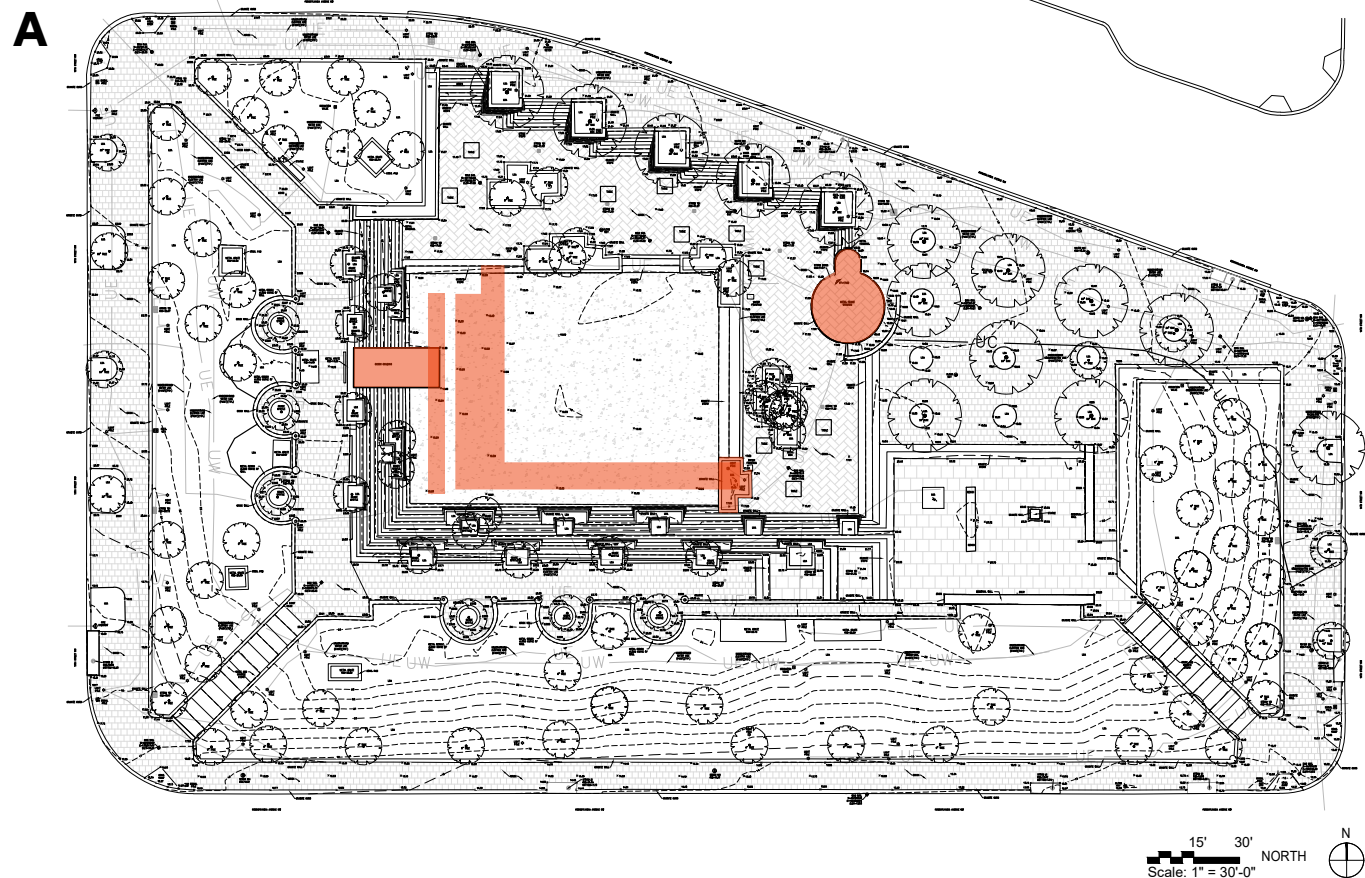
SCULPTURE WALL - OPTION B: INTEGRATED WALL



OPTION B: INTEGRATED WALL - ASSESSMENT OF EFFECTS



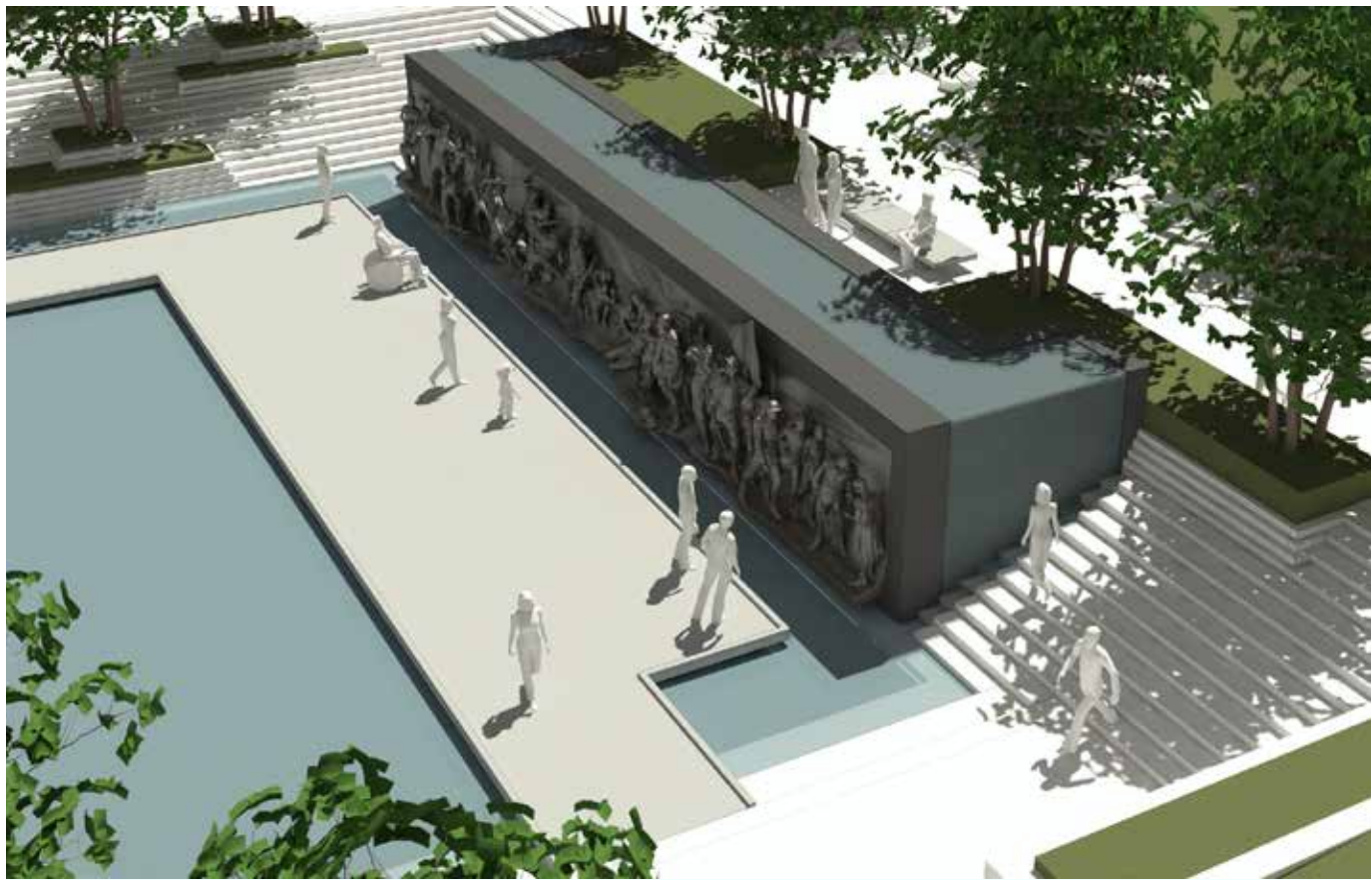
SCULPTURE WALL COMPARISONS - ASSESSMENT OF EFFECTS



Character-Defining Feature	Assessment
Retained	
Pershing Memorial granite walls	No adverse effect
Terra-cotta pavers	No adverse effect
Memorial plaza granite flooring	No adverse effect
Belgian block paving	No adverse effect
Semi-circular alcoves	No adverse effect
Pershing statue and memorial	No adverse effect
PADC lighting	No adverse effect
Removed	
Granite cascade pool structure	Adverse effect
Kiosk	Adverse effect
Cascade fountain	Adverse effect

Character-Defining Feature	Assessment
Modified	
Granite planters	Adverse effect
Granite steps	Adverse effect
Pool basin	Adverse effect
Omnidirectional view	Adverse effect
Honey locust trees over lawn on berms	Likely no adverse effect
Willow oaks above paving at NE corner	Likely no adverse effect
Willow oaks in planters on north side of pool	Likely no adverse effect
Crape myrtle trees in alcoves	Likely no adverse effect
Crape myrtle and birch trees	Likely no adverse effect
Native and naturalized grasses and perennial flowering	Likely no adverse effect
Drinking fountains	Likely no adverse effect
Trash cans	Likely no adverse effect

SCULPTURE WALL - COMPARISONS



SCULPTURE WALL - COMPARISONS



POOL WALKWAY



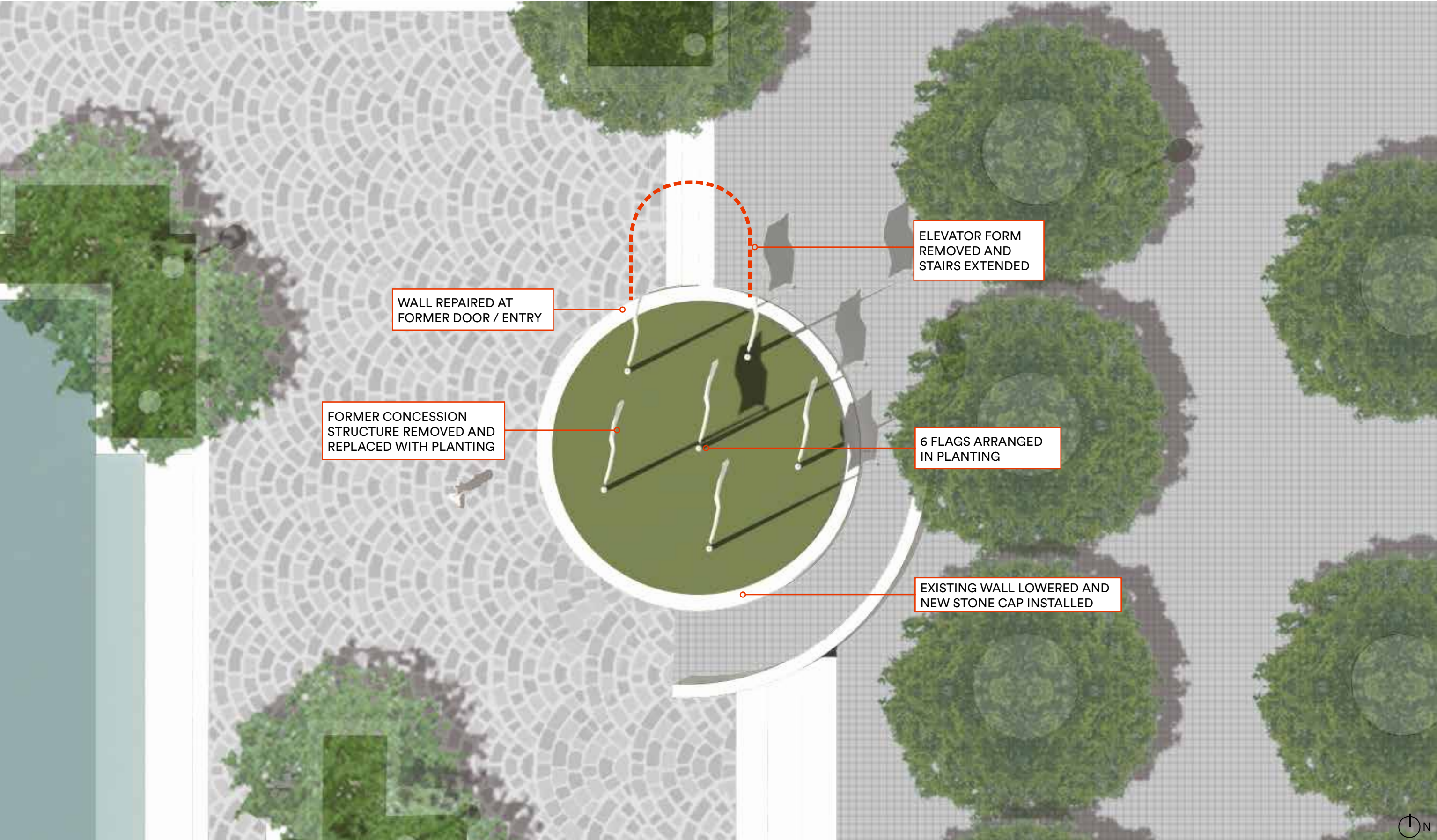
POOL WALKWAY



FLAGSTAFF



FLAGSTAFF



MITIGATION TOPICS

Mitigation Strategies would likely fall into one of three categories:

- Paved / hardscape elements
- Vegetation
- Documentation

Design Change	Mitigation Topics
Removals	
Remove cascade fountain	1) Salvaging of fountain materials (stone) for use in new fountain 2) Interpretation about the missing design elements
Remove section of western steps and five granite planters (Option B only)	1) Consideration of reduced length of sculpture wall and fountain 2) Salvaging of stone for use in other locations within the park
Remove trash receptacles	1) Repair and retention 2) Replacement in-kind
Remove sections of steps and portions of one granite planter	1) Consideration of where new pool walkways require step and planter removal 2) Salvaging of stone for use in other locations within the park
Additions	
Add bas relief wall and fountain	1) Consideration of reduced length of sculpture wall and fountain 2) Reuse of stone from existing fountain in construction of new fountain
Add walkway over pool	1) Minimization of size of new walkway 2) Consideration of number of connections to the pool edge to minimize loss of granite steps and planters
Replacements	
Replace unhealthy street trees	Replacement in kind
Replace river birch trees	Replacement in kind
Replace herbaceous plants	Replacement in kind
Replace kiosk with flagpole	Minimization changes to the kiosk base and ramp
Replace honey locust trees and reduce quantity	1) Replacement in kind and retention of current number 2) Retention of planting pattern
Replace crape myrtles	Replacement in kind
Replace drinking fountain	Replacement in kind
Replace lawn with flowering perennials to match OVS plan	Replacement as described

PAVING AND HARDSCAPE EFFECTS MINIMIZATION AND MITIGATION

EXISTING TO REMAIN AND/OR PROPOSED TO MATCH EXISTING



PENNSYLVANIA AVENUE PAVER:
TERRA COTTA PAVERS AND BRICKS OF
VARYING SIZES



GRANITE SETTS:
COLDSRING CARNELIAN GRANITE
SETTS



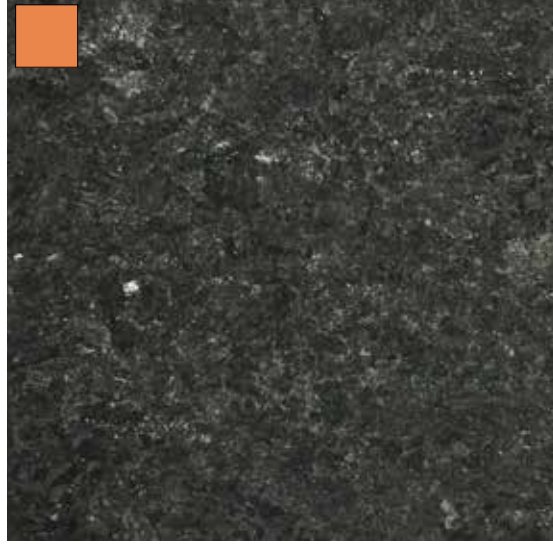
PERSHING MEMORIAL PAVING:
(THERMAL FINISH), COLDSRING
CARNELIAN GRANITE

EXISTING TO BE REMOVED



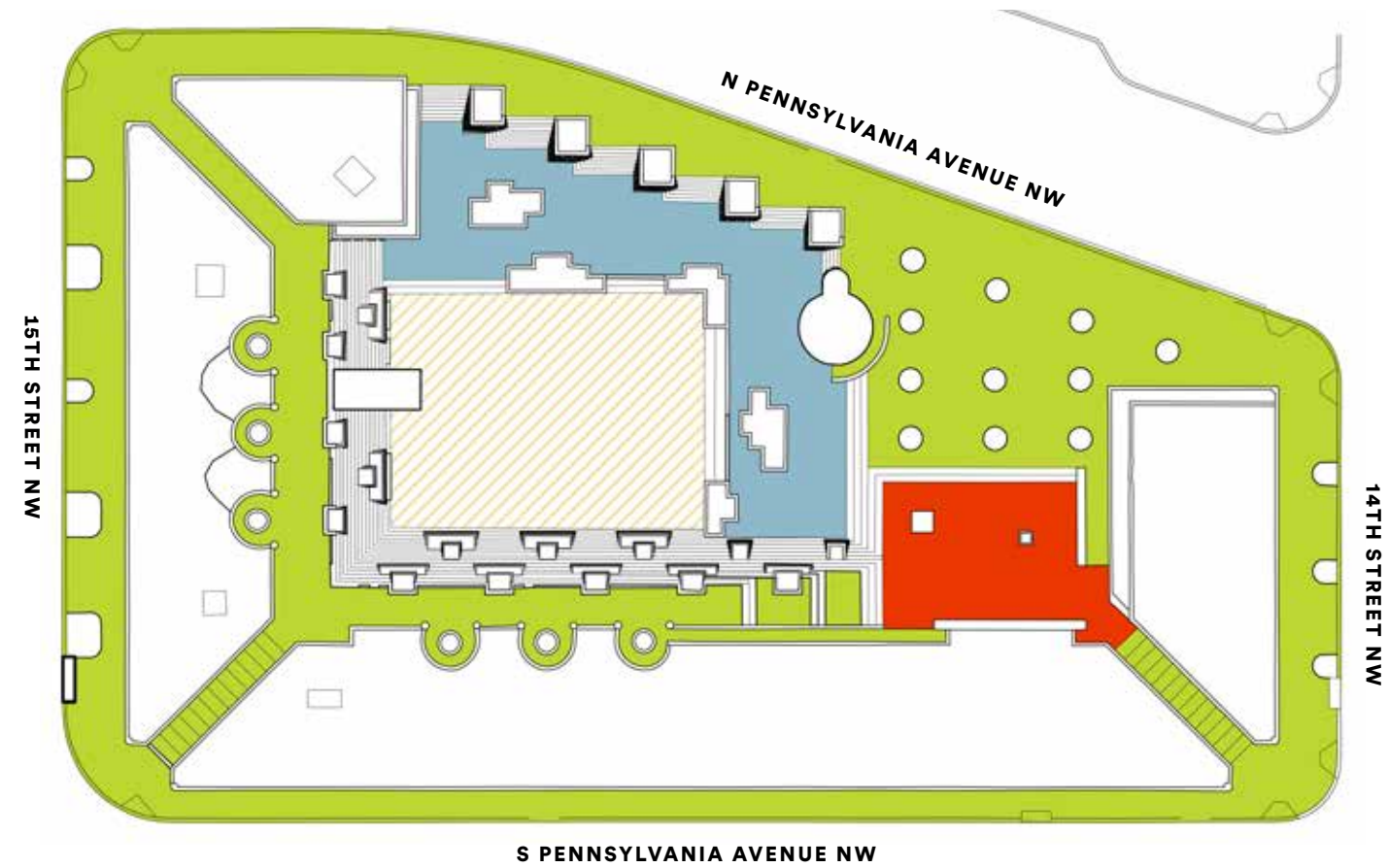
POOL BASIN / ICE RINK FLOOR:
CAST IN PLACE (CIP) CONCRETE

PROPOSED

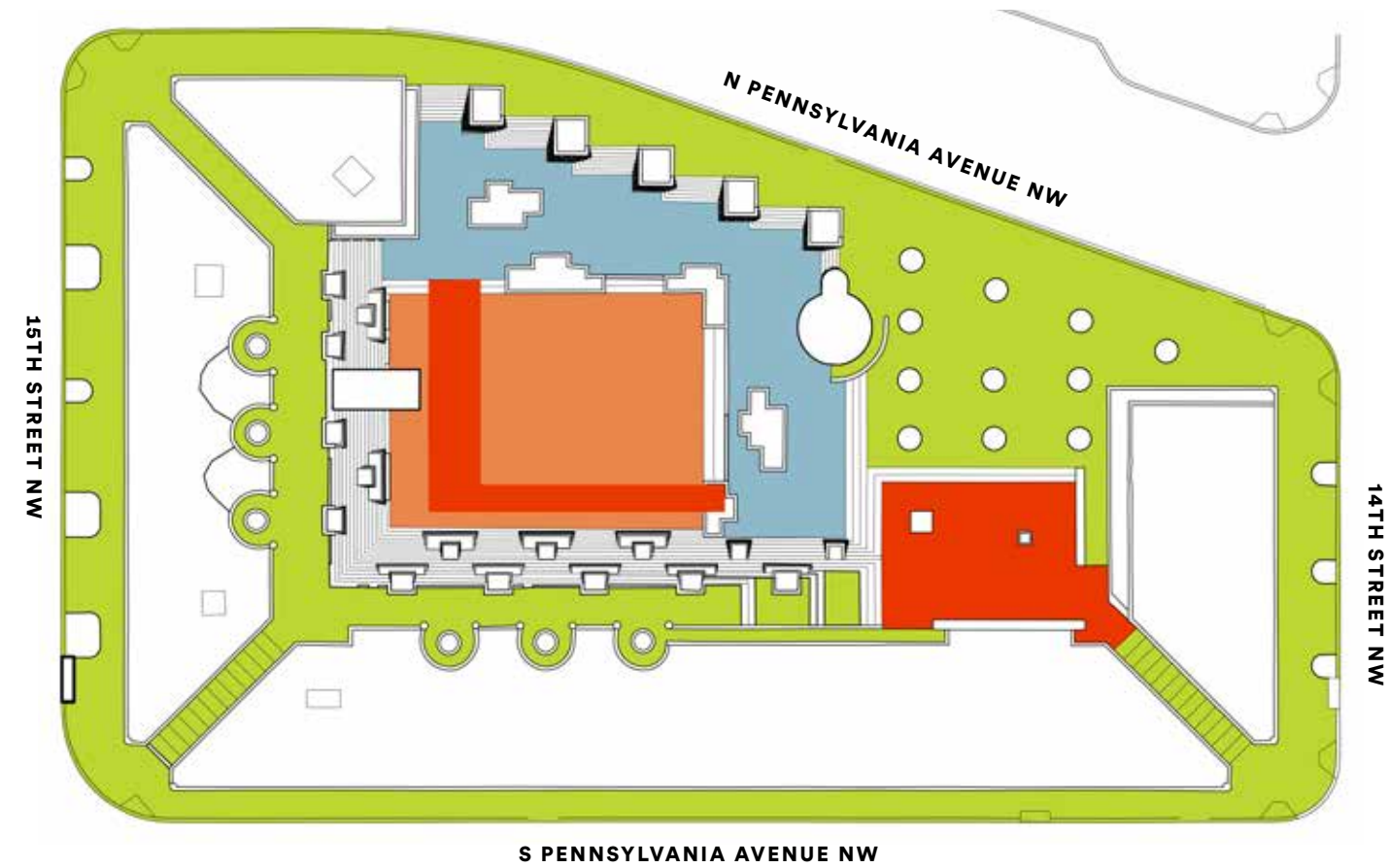


POOL BASIN /
SCULPTURE SUPPORT WALL:
COLSPRING MESABI BLACK GRANITE
(DIAMOND 100 FINISH FOR BASIN,
DIAMOND 8 HONED FINISH FOR WALL)

EXISTING PAVING PLAN

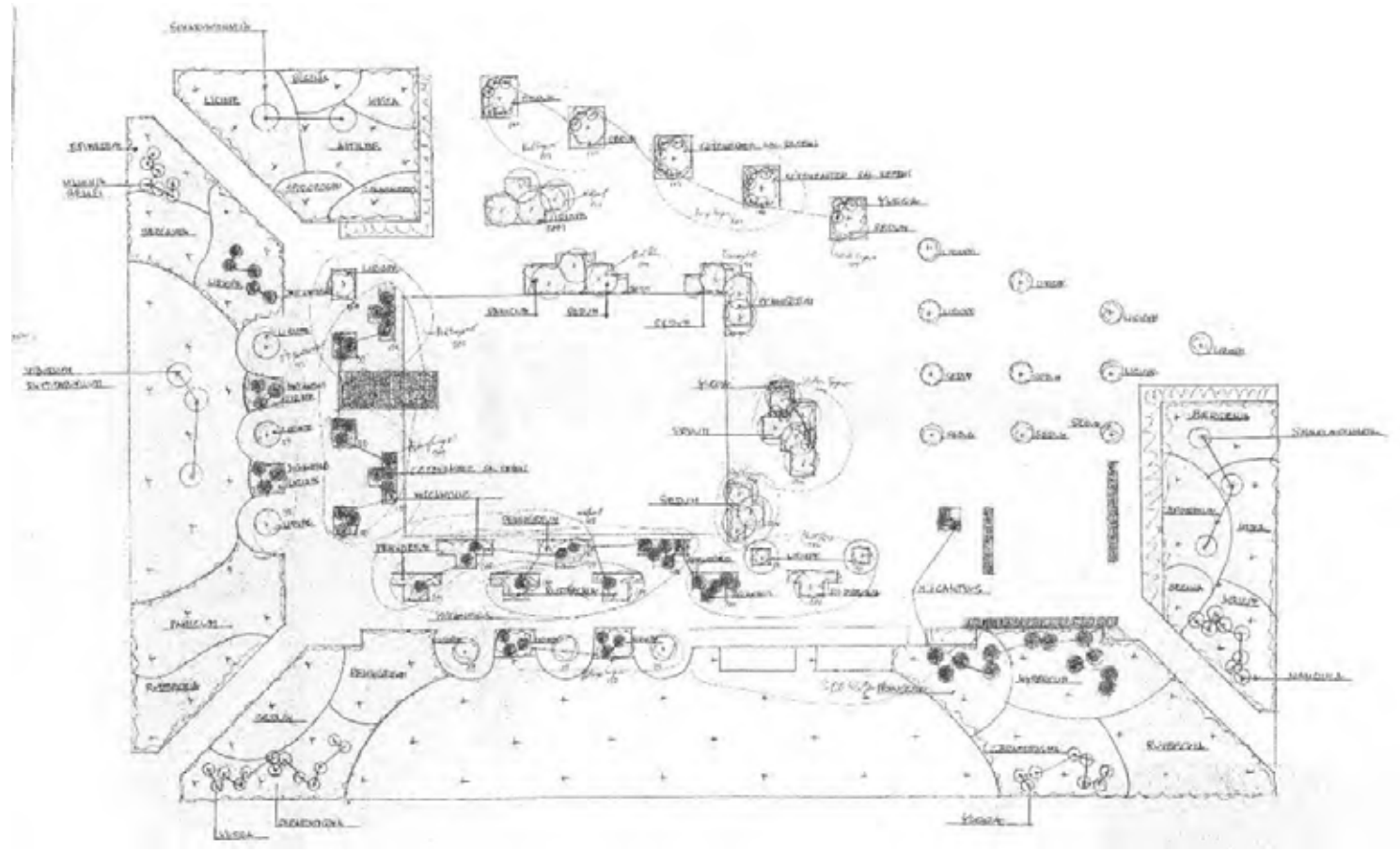


PROPOSED PAVING PLAN



REHABILITATE OEHME VAN SWEDEN PLANTING PLAN

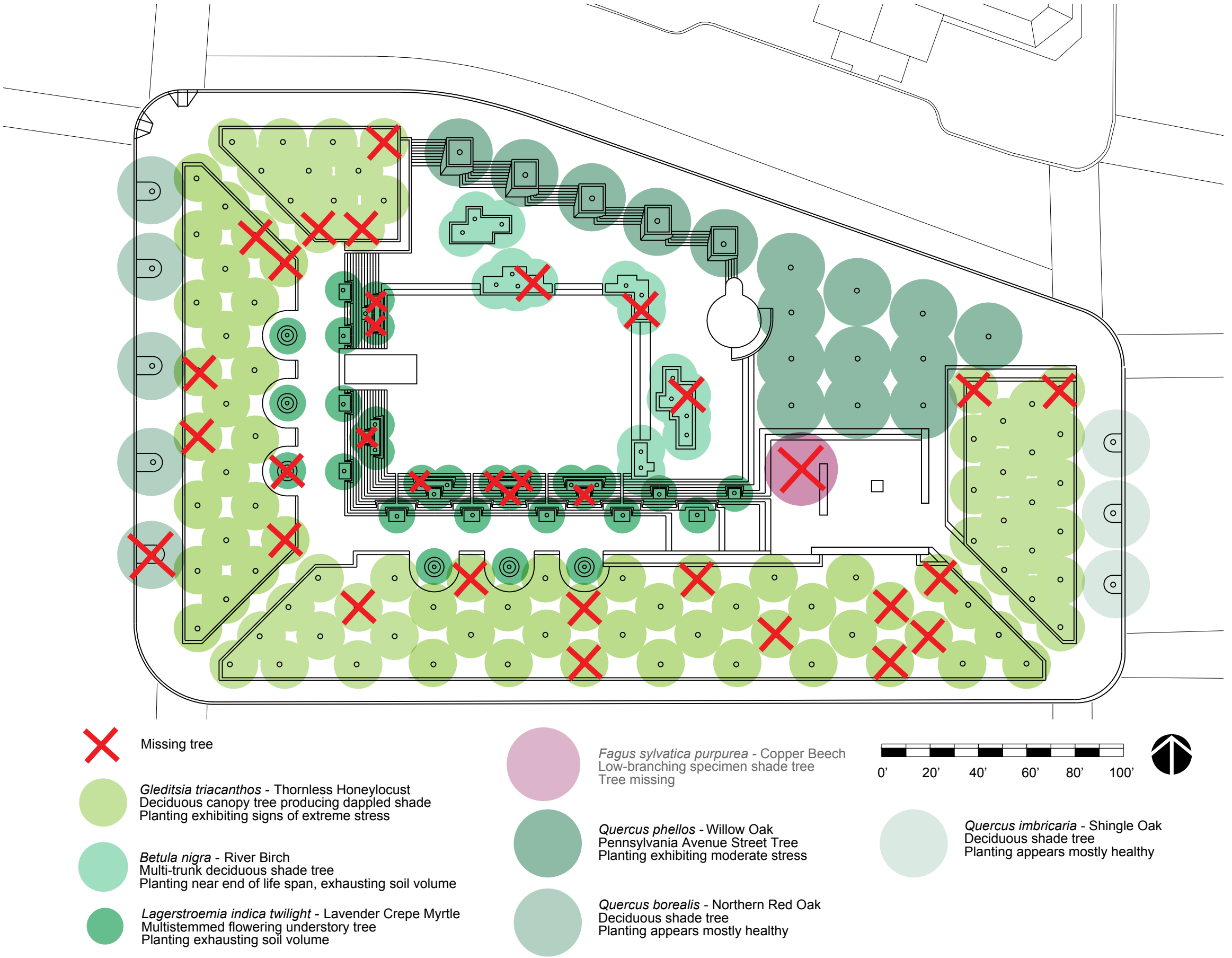
The Oehme van Sweden planting plan for Pershing Park added grasses and perennials near the pool. Water plants, ornamental grasses, and perennials created lush spaces within the design framework.



VEGETATION MITIGATION: OEHME VAN SWEDEN PLANTING PLAN

Potential treatments

- Root Collar Excavation
- Repair of Girdling Roots
- Pruning
- Soil Improvements



DOCUMENTATION

Documentation of historic resource could provide mitigation for changes to the park. Potential options and topics for documentation include the following:

- Context study on modernist landscapes in DC, or
- Updating the Historic American Buildings Survey/Historic American Landscape Survey (HABS/HALS) documentation with plans, sections, large format imagery, and interpretive materials

HABS

HISTORIC AMERICAN BUILDINGS SURVEY



DOCUMENTING AMERICA'S
ARCHITECTURAL HERITAGE

HALS

HISTORIC AMERICAN LANDSCAPES SURVEY



Tudor Place, Washington, DC; south lawn and façade of house through historic tulip poplar; Jack E. Boucher, photographer, 1998.



DOCUMENTING AMERICA'S
LANDSCAPE HERITAGE



APPENDIX

Site Photos

FOUNTAIN AND TERRACES



SITE ELEMENTS

