

National Park Service
U.S. Department of the Interior

Hot Springs National Park



Welcome to the
Hot Springs National Park
Pullman Avenue
Trail Connection
Public Open House

Tuesday, January 30, 2018
4:30 – 7:30 p.m.



Pullman Avenue Trail Connection



Project Goals and Overview

- Provide a safe, sustainable and planned route between Hot Springs National Park and the City of Hot Springs Urban Forest Park and Cedar Glades Park
- Develop a short (<1 mile total), multi-use, natural soil trail to accommodate recreational uses such as hiking and biking
- Protect important natural and cultural resources in the area
- Work in partnership with City of Hot Springs, Visit Hot Springs, and the International Mountain Bike Association (IMBA)



Pullman Avenue Trail Connection

What is “NEPA”?

“NEPA” stands for “National Environmental Policy Act”

- 1969 law that all federal agencies abide by
- Disclose the impacts of a federally-led project on the human environment
- Provide transparency and comment opportunities for the public
- Guides overall structure and process to this planning effort

What is an “EA”?

An “EA” is an “Environmental Assessment”

- One of the three common NEPA pathways
- Requires analysis of resources that might be affected by the project
- Final agency decision is called a Finding of No Significant Impact, or “FONSI”



Pullman Avenue Trail Connection

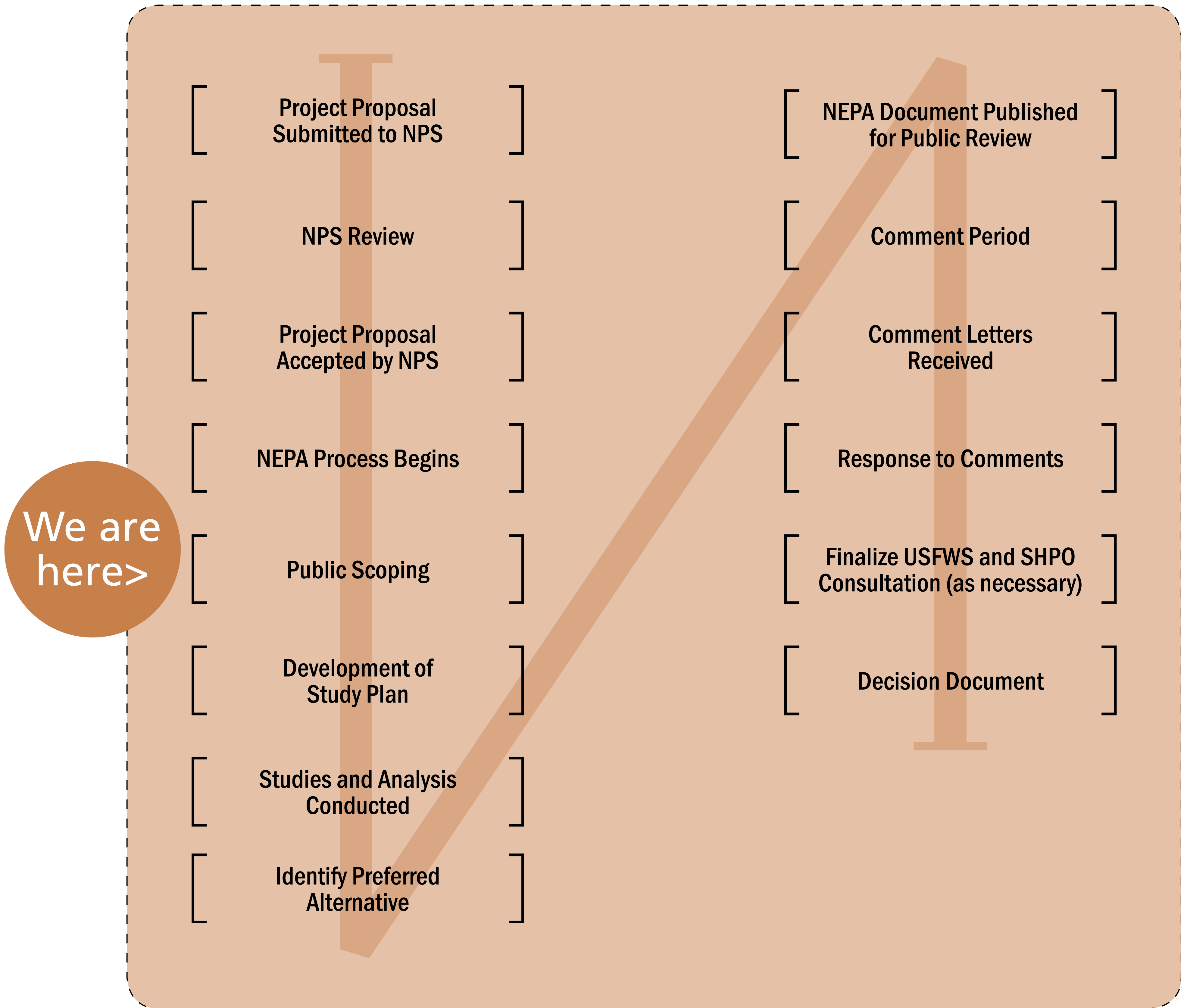


Cultural Resources Compliance

- This project will be carried out in accordance with the National Historic Preservation Act
- Hot Springs National Park will begin Tribal Consultation later this winter
- Fieldwork will be conducted to assess whether any cultural resources would be affected by the proposed trail connection
- Mitigation of any cultural resources impacts will be included in the Environmental Assessment

Pullman Avenue Trail Connection

NPS planning and NEPA flowchart





Pullman Avenue Trail Connection



Key Issues and Resources

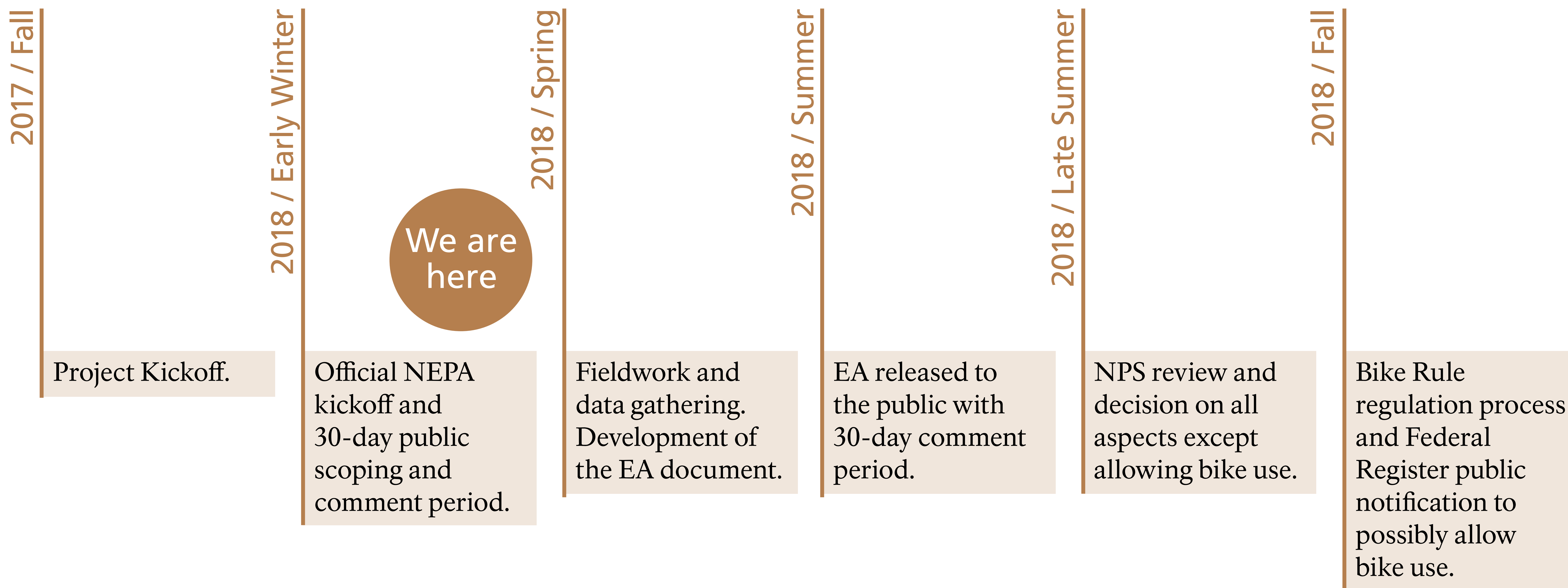
- Vegetation
- Soils
- Wildlife
- Scenery
- Cultural Resources
- Recreational Use
- Transportation and Access
- Public Safety
- Economic Impacts

We want
to hear your
feedback on
these issues &
resources!



Pullman Avenue Trail Connection

Project Timeline





Pullman Avenue Trail Connection



What is the NPS Bike Rule?

- The Bike Rule is a federal regulation for designating bicycle routes and managing bicycle use within park units throughout the National Park System
- It was signed in 2012 to improve the prior regulation in response to increasing public interest in bike use in National Park units
- For the Pullman Avenue Trail Connection project, the Bike Rule would result in a special regulation to allow new construction of a multi-use trail on which bike use could be authorized



Pullman Avenue Trail Connection

We Want Your Input!

Share Your Ideas and Feedback with Us!

- Submit your comment forms here tonight
- Enter your comments on the PEPC project website
- Mail your comments to:
Attn: Pullman Avenue Trail Connection Comment
Hot Springs National Park
101 Reserve St.
Hot Springs, AR 71901
- Please submit your comments by February 16, 2018

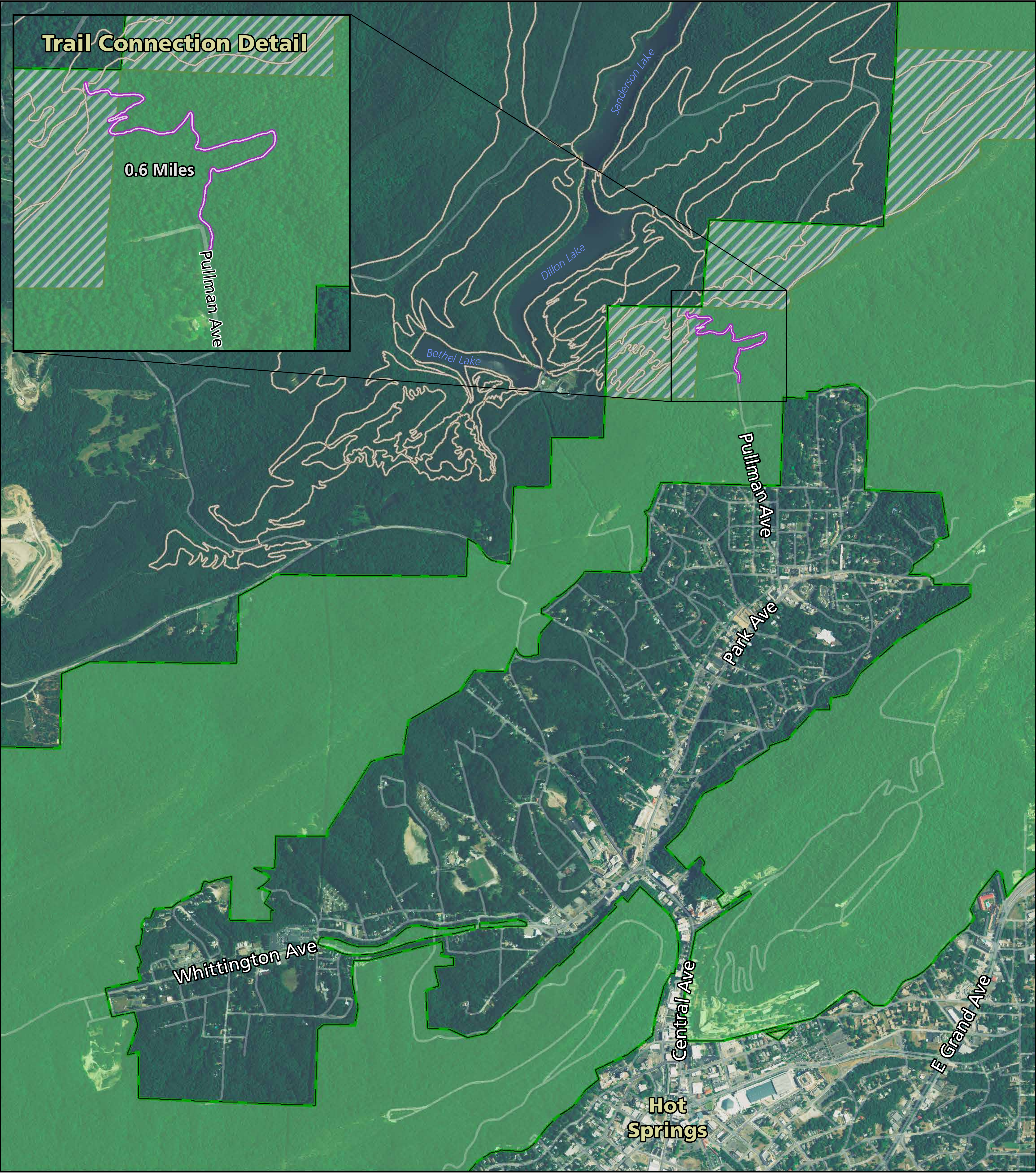
What's Next?

- Another 30-day public comment period will occur when the Environmental Assessment is ready for review.
- The NPS Bike Rule federal regulation process will occur concurrently with and following the NEPA process.

Thank You!

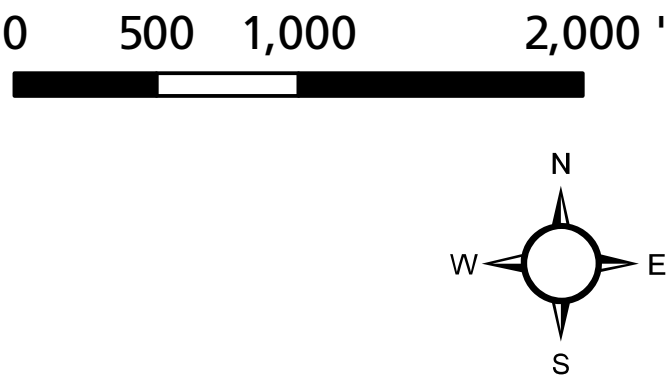


Pullman Avenue Trail Connection



LEGEND

- Proposed Pullman Avenue Trail Connection
- Proposed City of Hot Springs Multi-Use Trails
- Hot Springs National Park Administrative Boundary
- National Park Service Lands
- Other Public Lands Within Hot Springs National Park



Date: January 2018
NAD 1983, State Plane Arkansas South (feet)
Features represented on map are approximate