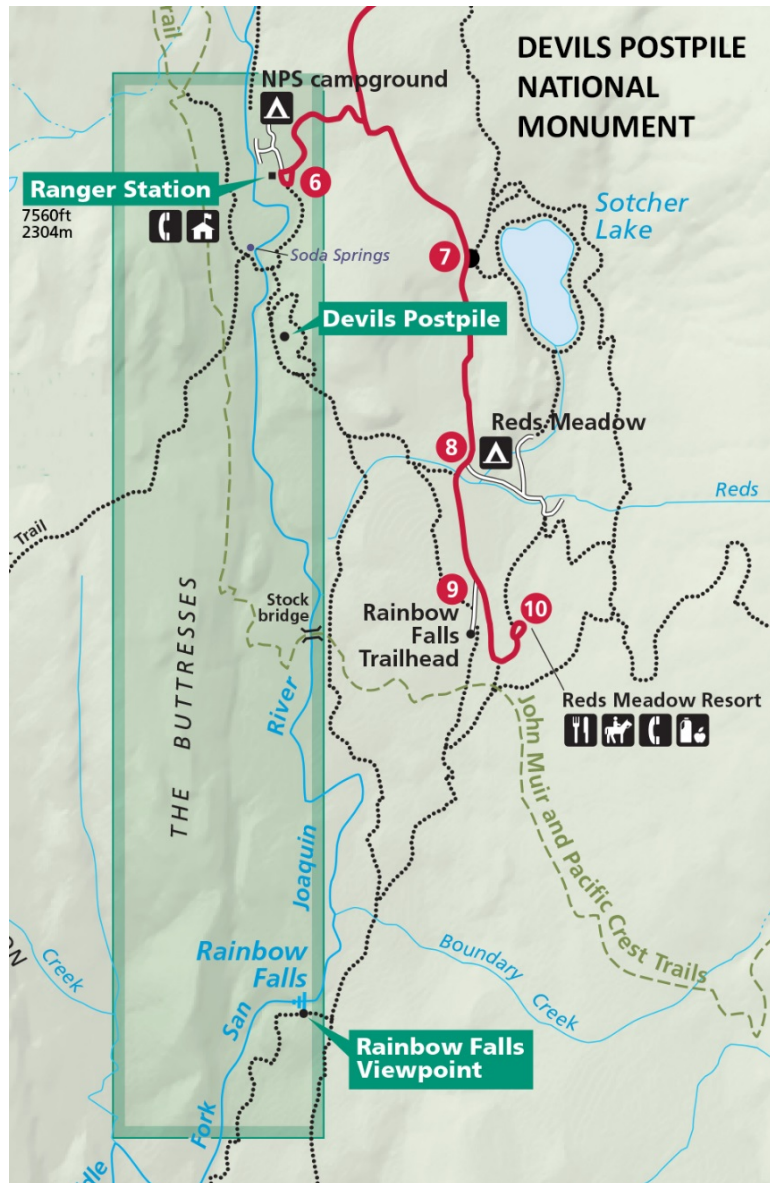


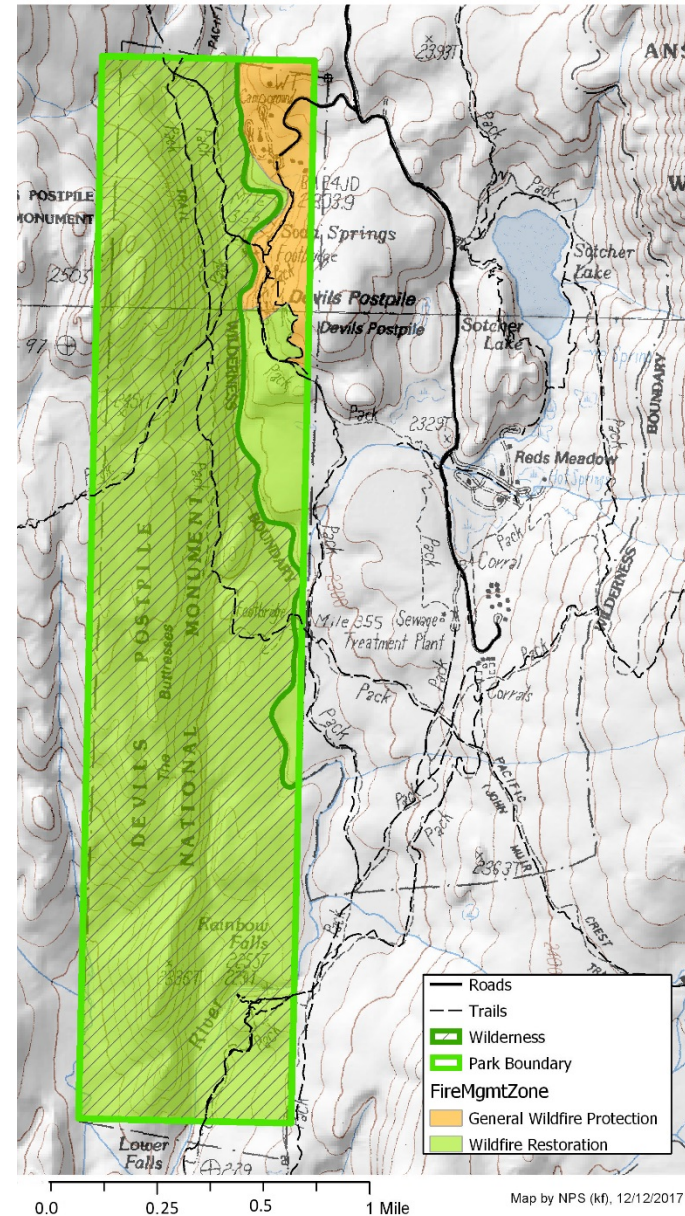


**Proposed Devils Postpile National Monument
Fire Management Plan Update
Strategic Wildfire Zones**

January 2018



**DEVILS POSTPILE NATIONAL MONUMENT
PROPOSED FIRE MANAGEMENT ZONING**



DEVILS POSTPILE NATIONAL MONUMENT -- PROPOSED STRATEGIC WILDFIRE ZONES				
Zone Name	Goal	Park Resources	Fire Management Strategies	
			Wildfire	Fuels Management
P GENERAL WILDFIRE PROTECTION	Protect park visitors and reduce the risk to natural and cultural resources from unwanted wildfire.	Majority of park infrastructure, high visitor concentration, access roads, recreational resources, natural and cultural resources.	<ol style="list-style-type: none"> 1. Provide an aggressive initial suppression response to wildfire. 2. Use wildfire on a limited basis to increase ecosystem resilience and provide ecological benefits when conditions allow. 	<ol style="list-style-type: none"> 1. Use mechanical treatment and/or prescribed fire to reduce hazardous fuel loads.
R WILDFIRE RESTORATION	Restore a more natural fire regime and forest structure to increase resilience to the effects of wildfire.	Wilderness and non-wilderness forests, wildlife habitats, watersheds, riparian corridors, meadows, ecological processes, nationally significant trails, and cultural resources.	<ol style="list-style-type: none"> 1. Suppress unwanted wildfire. 2. Allow wildfires when conditions provide opportunities for fire management to increase ecosystem resilience and to provide ecological benefits. 	<ol style="list-style-type: none"> 1. Use mechanical treatments combined with prescribed fire to reduce fuel loads and restore a more natural fire regime, and for management of special resources including Soda Springs and cultural resources.
M* WILDFIRE MAINTENANCE	Maintain ecosystem resilience and allow for the ecological benefits of wildfire.	Wilderness and non-wilderness forests, wildlife habitats, watersheds, riparian corridors, meadows, ecological processes, nationally significant trails, and cultural resources.	<ol style="list-style-type: none"> 1. Suppress unwanted wildfire when conditions warrant. 2. Use wildfire to maintain ecosystem resilience and provide ecological benefits when conditions allow. 	<ol style="list-style-type: none"> 1. Use mechanical treatment combined with prescribed fire where necessary to reduce risk of damage from unwanted wildfires and/or maintain a natural fire regime.

***Note:** At present, no park lands are proposed for inclusion in the “Wildfire Maintenance Zone”. However, over the life of the Fire Management Plan, the intent is that some park lands currently in the “Wildfire Restoration Zone” would, following fire management treatments, transition to the “Wildfire Maintenance Zone” as ecological conditions in these areas come into conformance with more natural fire regimes. The Zone reassignment would occur once monitoring results, and resource specialists and park managers determine that those acres are sufficiently restored to tolerate wildfire as a primary management tool.