



LITTLE BIGHORN BATTLEFIELD NATIONAL MONUMENT

Public Review of GMP Amendment /
Environmental Assessment

Purpose of Public Review

- Gather input on the Little Bighorn Battlefield National Monument General Management Plan Amendment / Environmental Assessment related to the park's visitor center and curatorial space.



Purpose of the GMP Amendment

- Provide new direction for the future of the park's visitor center and safeguard the park's museum collection.
- Improve the quality of visitors' experience in the visitor center.
- Provide better access to the museum collection and the information in the archives to the tribes and other stakeholders.



Plan Need: Providing for Quality Visitor Experiences

- 1952 visitor center is in poor condition.
- Many visitors have had a diminished experience:
 - >10,000 visitors annually are turned away from viewing park film.
 - >1,000 visitors endure tough conditions during ranger talks on the patio.



Plan Need: Protection of the Museum Collection

- Deteriorating condition of visitor center led to removal of collection from the park in 2011.
- As a result:
 - objects that are important to the tribes are no longer in the area.
 - objects in the museum are at risk.
 - objects are not readily available to researchers.



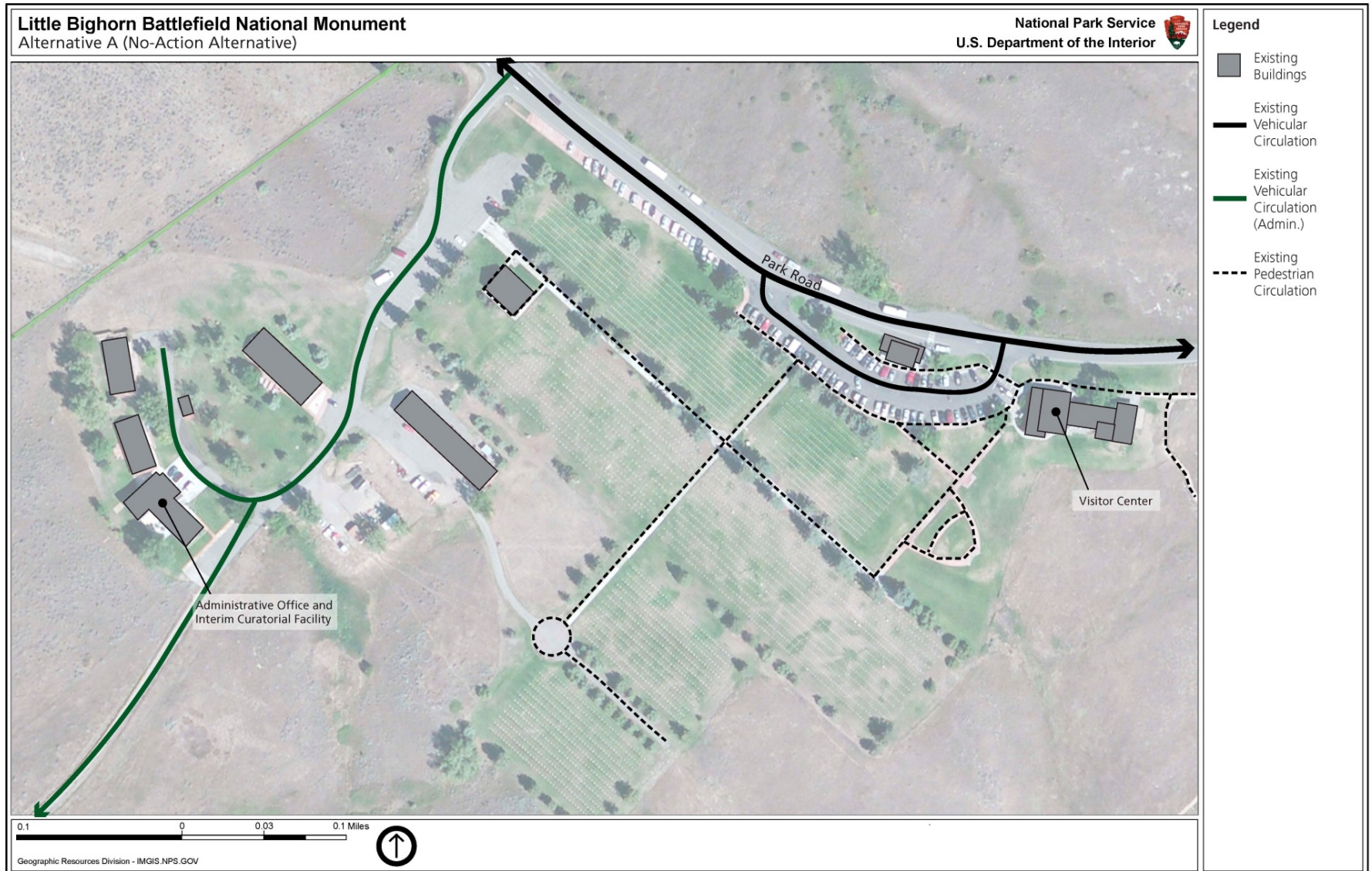
History of the Project

- **General Management Plan** (1986, updated in 1995) proposed a new visitor orientation / administrative facility at a different location.
- The National Park Service was **unable to implement** this because of land ownership issues and other challenges.
- In 2011, the park's **museum collection was relocated** to the Western Archeological and Conservation Center (WACC) in Tucson, AZ.
- In 2014, the National Park Service initiated a public planning process to **amend the park's general management plan**.

No Action Alternative-

- Required under NEPA; serves as a baseline for comparing the effects of action alternatives.
- **Visitor Center:** Keep existing visitor center in its original location and make interior improvements.
 - Partially addresses deferred maintenance to provide for long-term operation of the existing visitor center.
 - Minimal exhibit improvements.
 - Does not include installation of fire suppression and security systems and improved environmental controls.
- **Museum Collection / Administration:** No changes. Collection remains at WACC.

No-Action Alternative



Action Alternative (NPS Preferred)-

- *Implement an **interim remodel** of the visitor center to address more immediate facility and visitor experience needs.*
- ***Build a new visitor center** in the current location of the existing visitor center.*
- ***Return, at a minimum, priority museum objects**, if not all museum collection, to the park through the provision of an appropriate curatorial space.*
 - Flexibility to return collection to the park in phases, focusing on returning the highest priority objects first.
 - Flexibility to incorporate a smaller curatorial space in the visitor center rebuild and/or build a separate collection facility near the administrative building, depending on cost-effectiveness and feasibility.

Action Alternative (NPS Preferred)

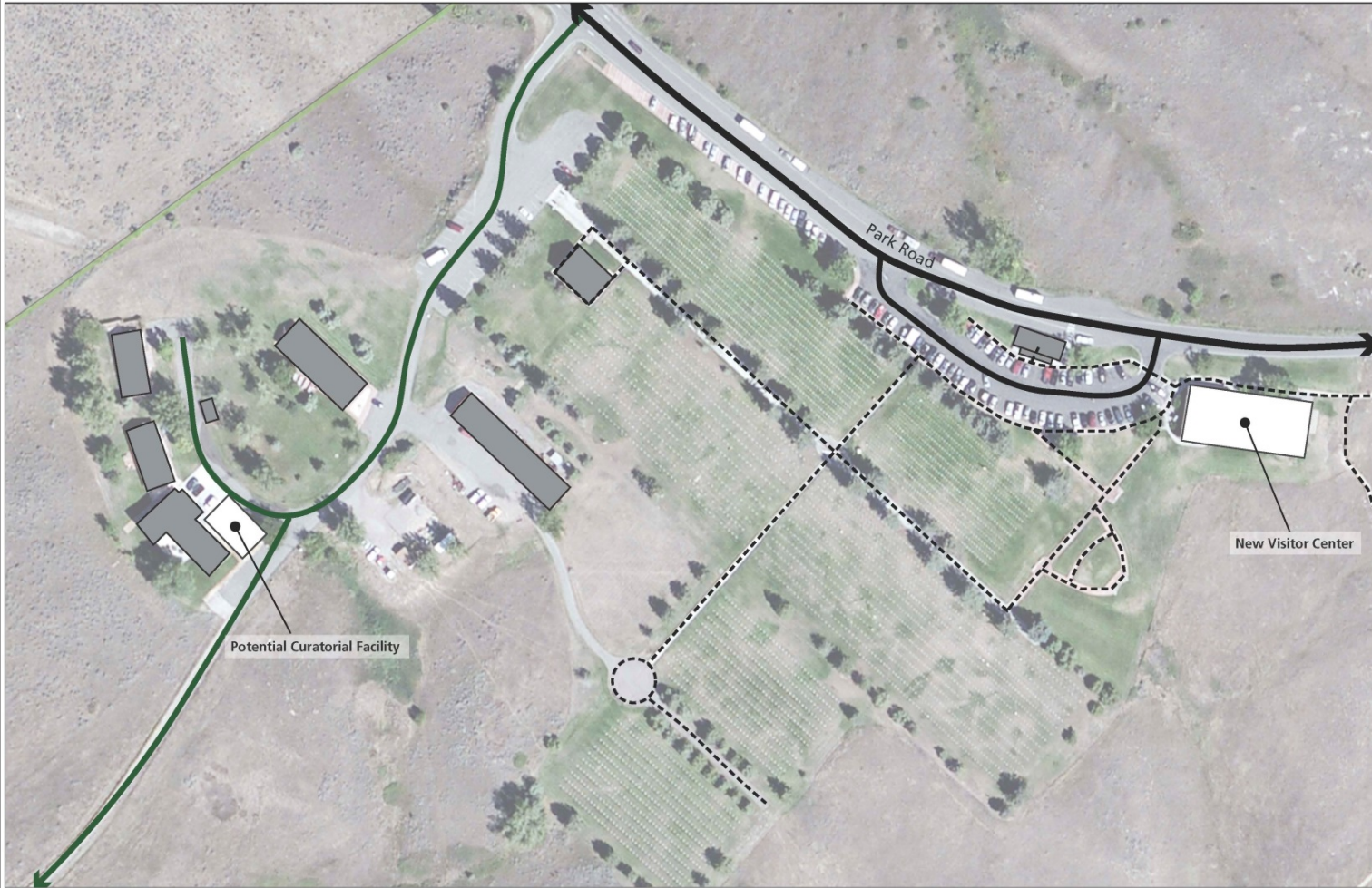
Little Bighorn Battlefield National Monument
Alternative B (NPS Preferred Alternative)

National Park Service
U.S. Department of the Interior



Legend

- New Buildings
- Existing Buildings
- Existing Vehicular Circulation
- Existing Vehicular Circulation (Admin.)
- Pedestrian Circulation



0.1 0 0.03 0.1 Miles

Geographic Resources Division - IMGIS.NPS.GOV



New Visitor Center

Potential Curatorial Facility

Alternatives Considered But Dismissed

- Lease a new visitor center and museum storage facility in Garryowen area.
- Lease a new visitor center and museum storage facility in the Reno Creek Road area.
- Build a new visitor center and museum storage facility on Custer Battlefield Preservation Committee land.
- Locate administrative offices outside the park.
- Lease a visitor center and collection facility as part of the proposed Montana Department of Transportation “Battlefield Rest Area.”

How to Comment on the Plan

- Use the NPS Public Environment and Planning Comment (PEPC) site to submit comments (https://parkplanning.nps.gov/libi_gmpa)
- Mail comments to Little Bighorn Battlefield National Monument: P.O. Box 39, Crow Agency, MT 59022
- Comments are due by January 4, 2018.

Next Steps in the Planning Process

Planning Step	When?
Provide opportunity for public to comment on the plan / environmental assessment (45-day comment period.)	Winter 2018
Analyze public comments and prepare responses to substantive comments.	Winter 2018
Prepare and sign decision document	Winter 2018



Thank you! Questions?

