

Your Input Matters. Stay Involved.

HOW TO COMMENT

We look forward to hearing your thoughts on the materials presented. You may provide comments in the following ways:

- We prefer that comments be submitted online at [go.nps.gov/JeffersonAccessibility](https://go.nps.gov/JeffersonAccessibility)
- Complete a comment form and submit it in person at the open house.
- Send a written comment form or letter to:

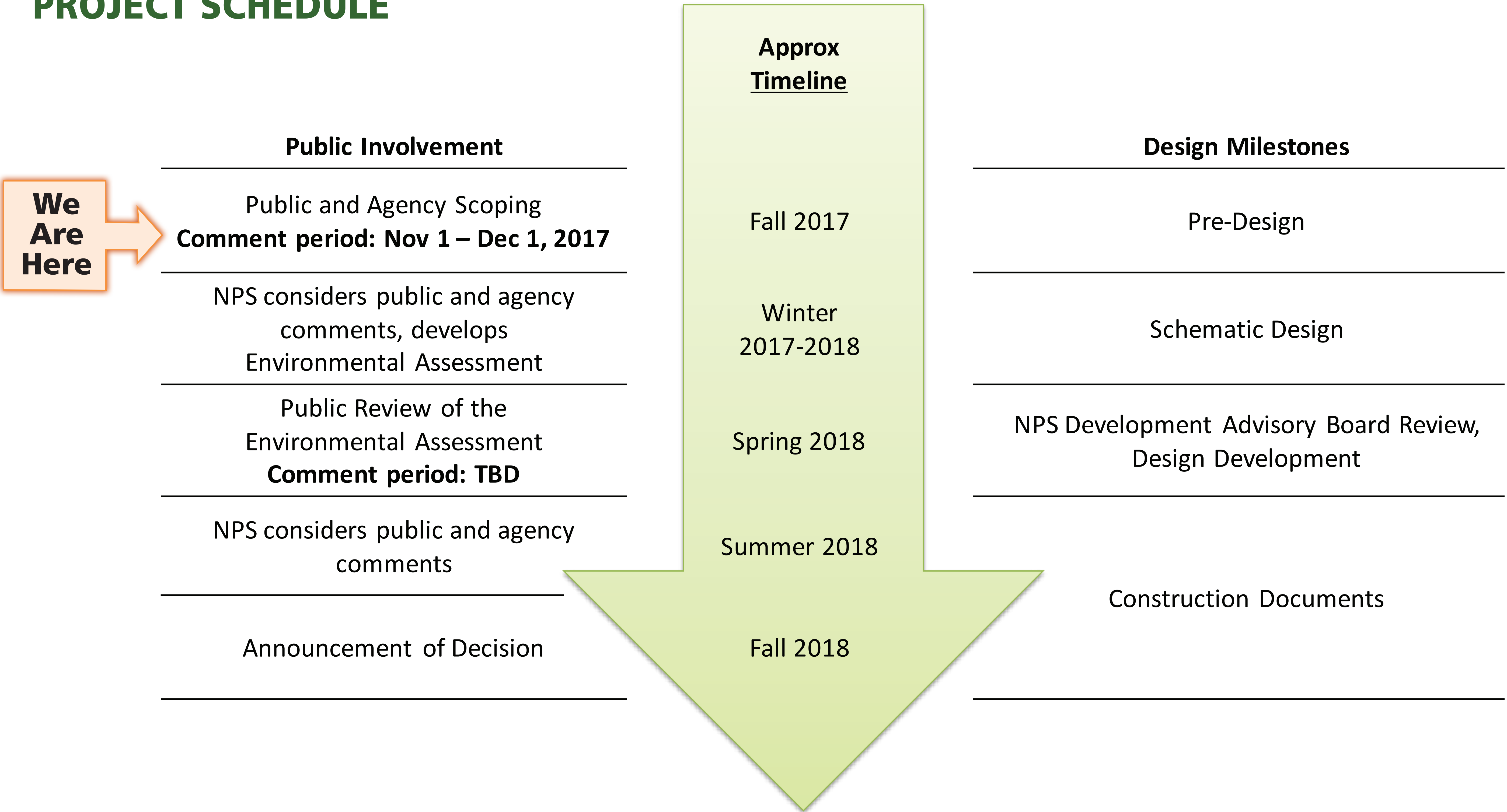
Superintendent  
Thomas Jefferson Memorial Accessibility Improvements EA  
National Mall and Memorial Parks  
900 Ohio Drive SW  
Washington, DC 20024

Please submit all comments by  
**December 1, 2017**

PLANNING PROCESS AND SCHEDULE

The table below outlines the planning process, highlighting opportunities for public involvement.

PROJECT SCHEDULE







## Purpose of and Need for the Project

### PURPOSE OF THE PROJECT

- Remove or reduce barriers to access for all visitors to the Memorial.
- Improve experience of all visitors to the Memorial.

### WHY IS THE PROJECT NEEDED?

- Accessible route to the interior is over 1,000 feet long and winding.
- There is only one accessible route to the chamber level.
- Elements of the Memorial interior present barriers to access, including
  - Interpretive exhibits.
  - Physical elements.
- Designated accessible parking may be blocked by buses.
- No access aisle protected from traffic.

### PROPOSED ACTION

- Improve parts of the interior for maximum accessibility, including
  - Interpretive exhibits.
  - Physical elements.



The statue of Thomas Jefferson is at the chamber level of the Memorial.

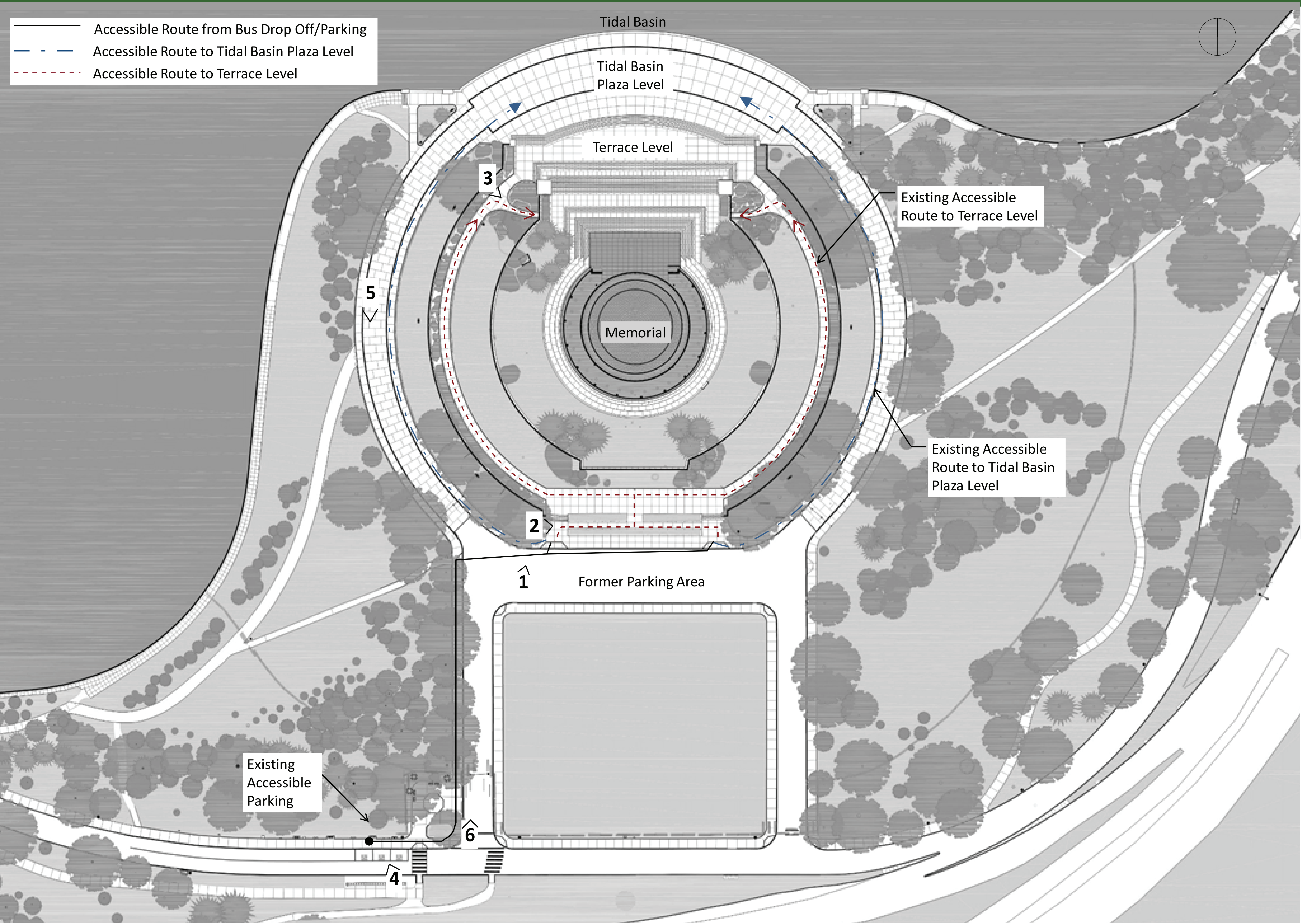


# Thomas Jefferson Memorial Accessibility Improvements

National Park Service  
US Department of the Interior  
  
National Mall and Memorial Parks  
District of Columbia



## Existing Conditions



1 Path to sloped walkways



2 West sloped walkway leading to Terrace Level



3 West entrance to Lower Level from Terrace Level



4 Reserved parking spots along East Basin Drive SW



5 East side Circular Roadway



6 Southwest approach to Memorial from refreshment kiosk





## Possible Interior Improvements

### POSSIBLE UPDATES TO THE INTERPRETIVE COMPONENTS:

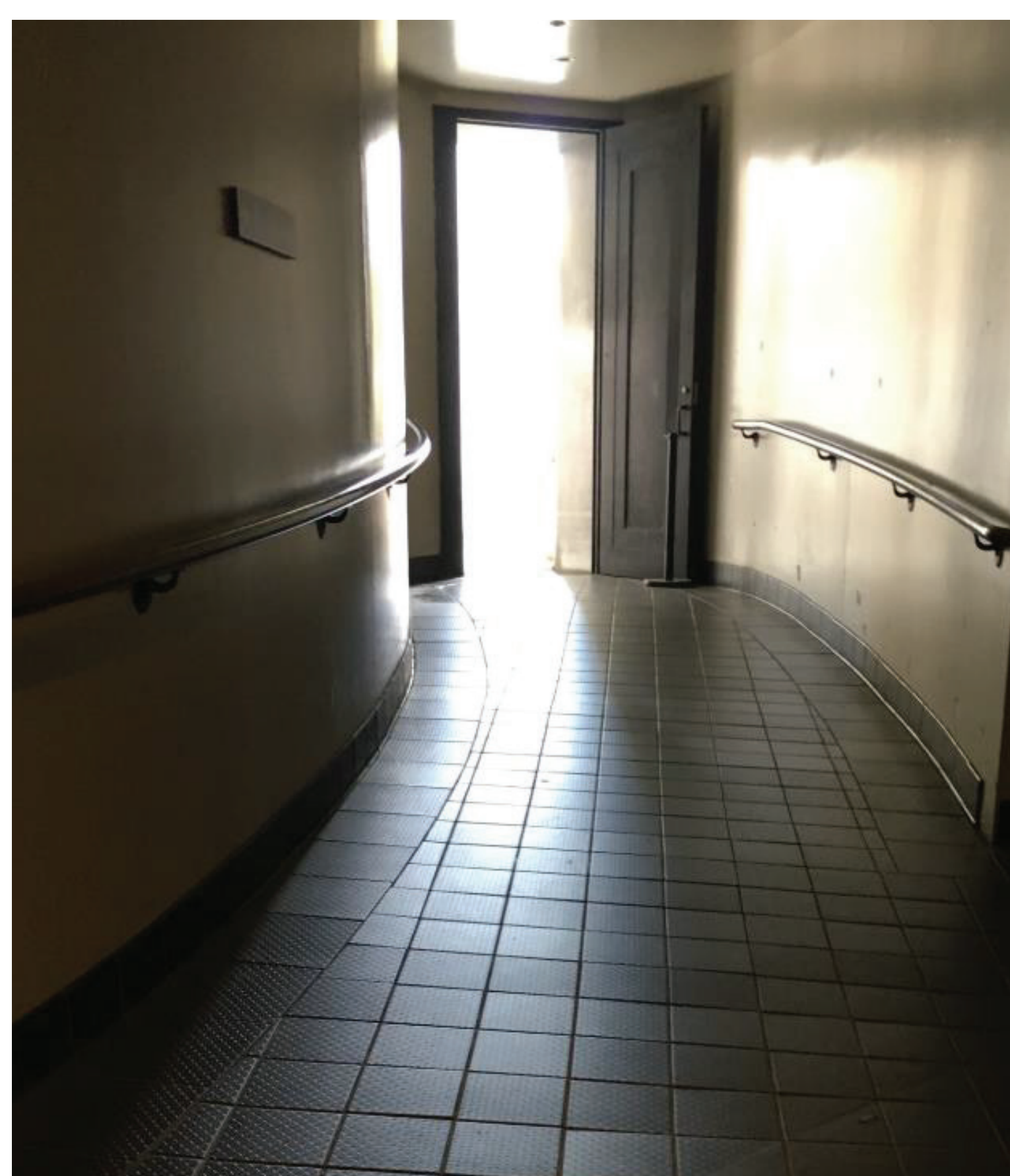
- Redesign the exhibits to focus on the Memorial, the Thomas Jefferson statue, and the surrounding landscape and vista.
- Relocate most of the interpretation to the former contact station adjacent to the chamber; to provide less of a disconnect between the visual experience and the tactile experience of viewing the memorial.
- Add tactile and audio-described waysides to the Thomas Jefferson Memorial grounds to share the experience with more visitors.
- Audio describe and provide braille for all interpretive and Memorial content.
- In the space leading up to and inside the elevator, create a desirable experience that is equivalent of ascending the stairs of the Thomas Jefferson Memorial.

### POSSIBLE UPDATES TO THE PHYSICAL COMPONENTS:

- Provide lowered counter tops at the bookstore.
- Reduce the steepness of the ramp to the chamber level.
- Extend handrails along the ramps at the entrance to the lower level.
- Adjust locations of fixtures within the restrooms.



Existing exhibit space



Elevator lobby ramp

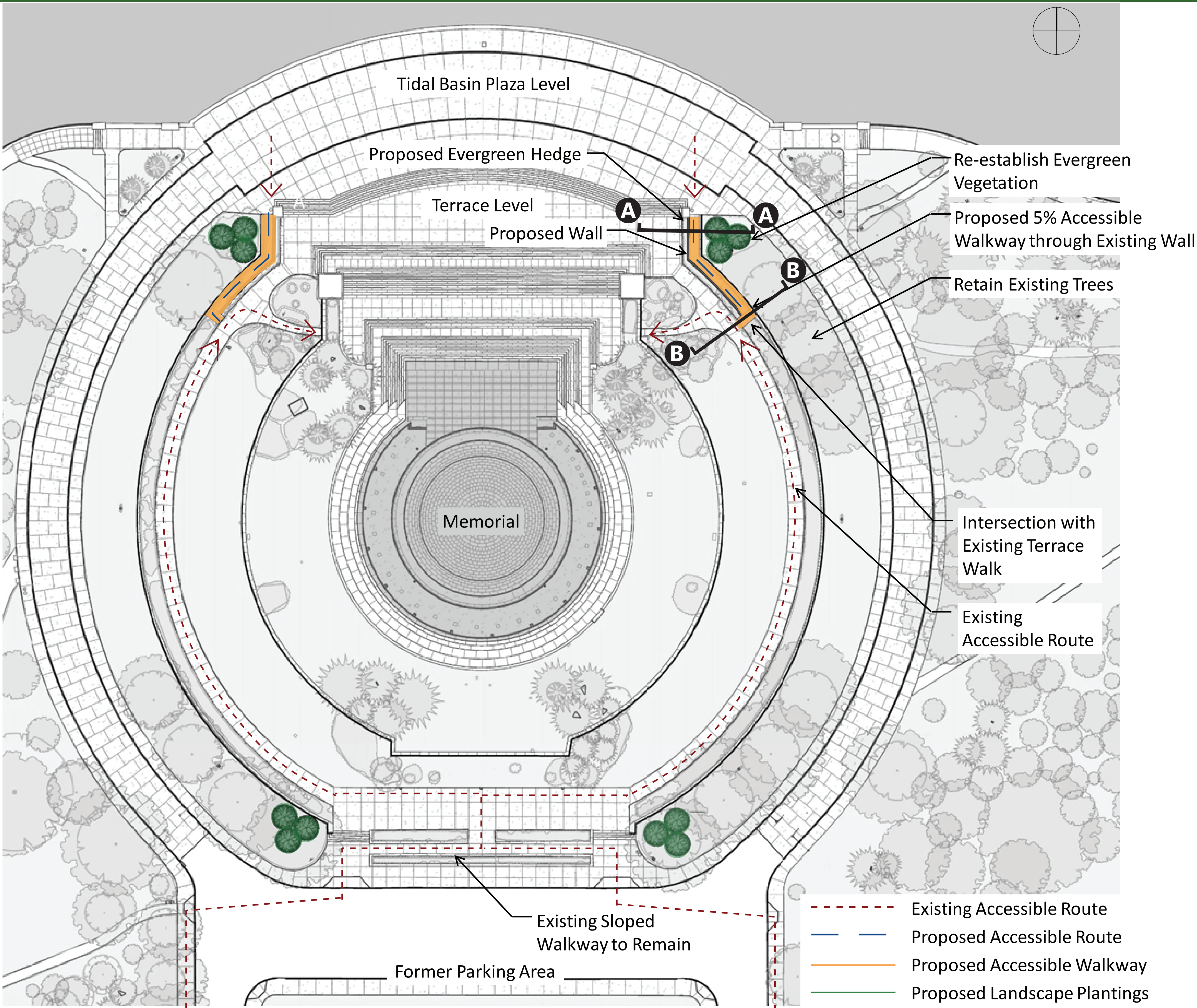


Bookstore on lower level



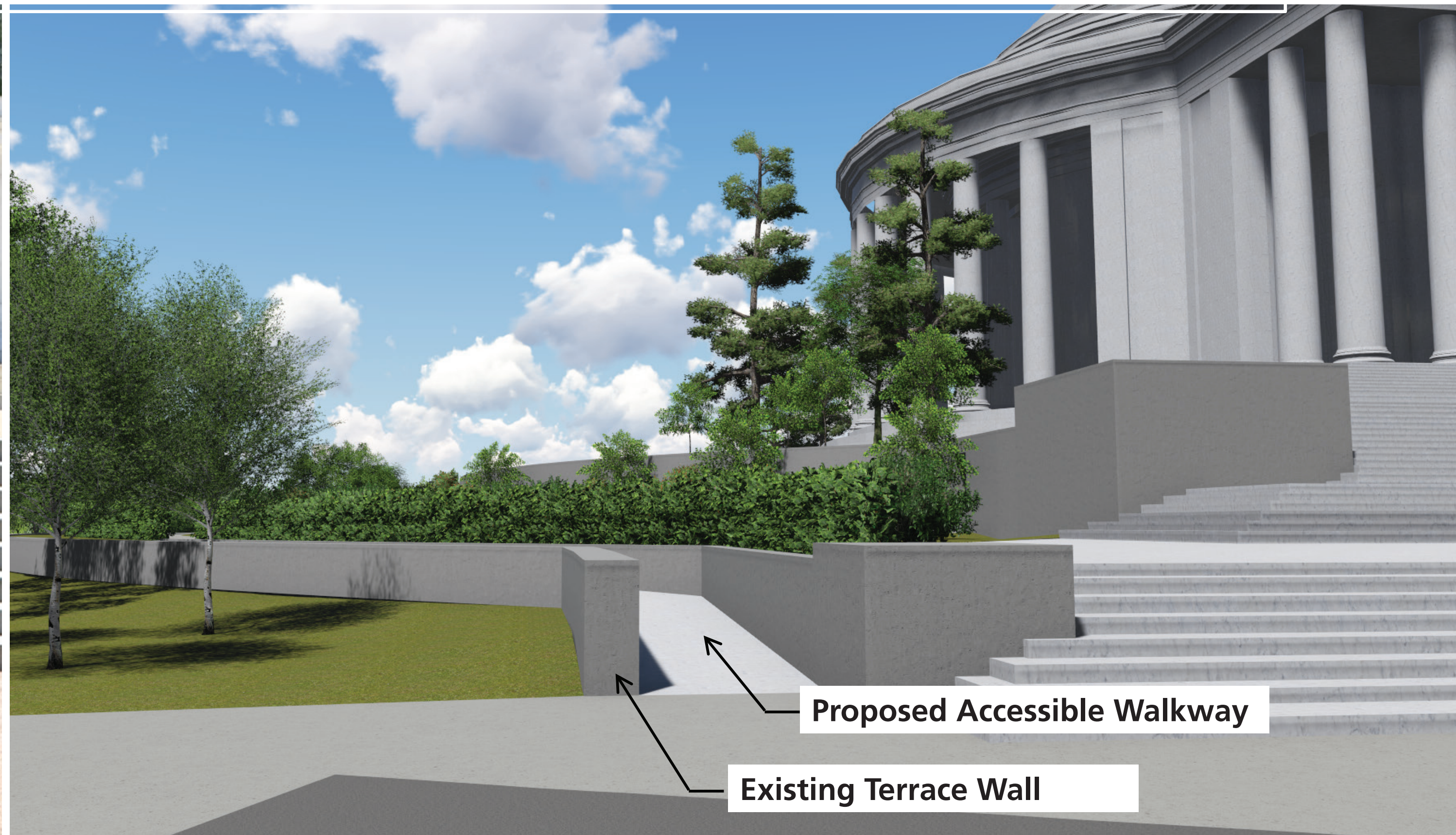
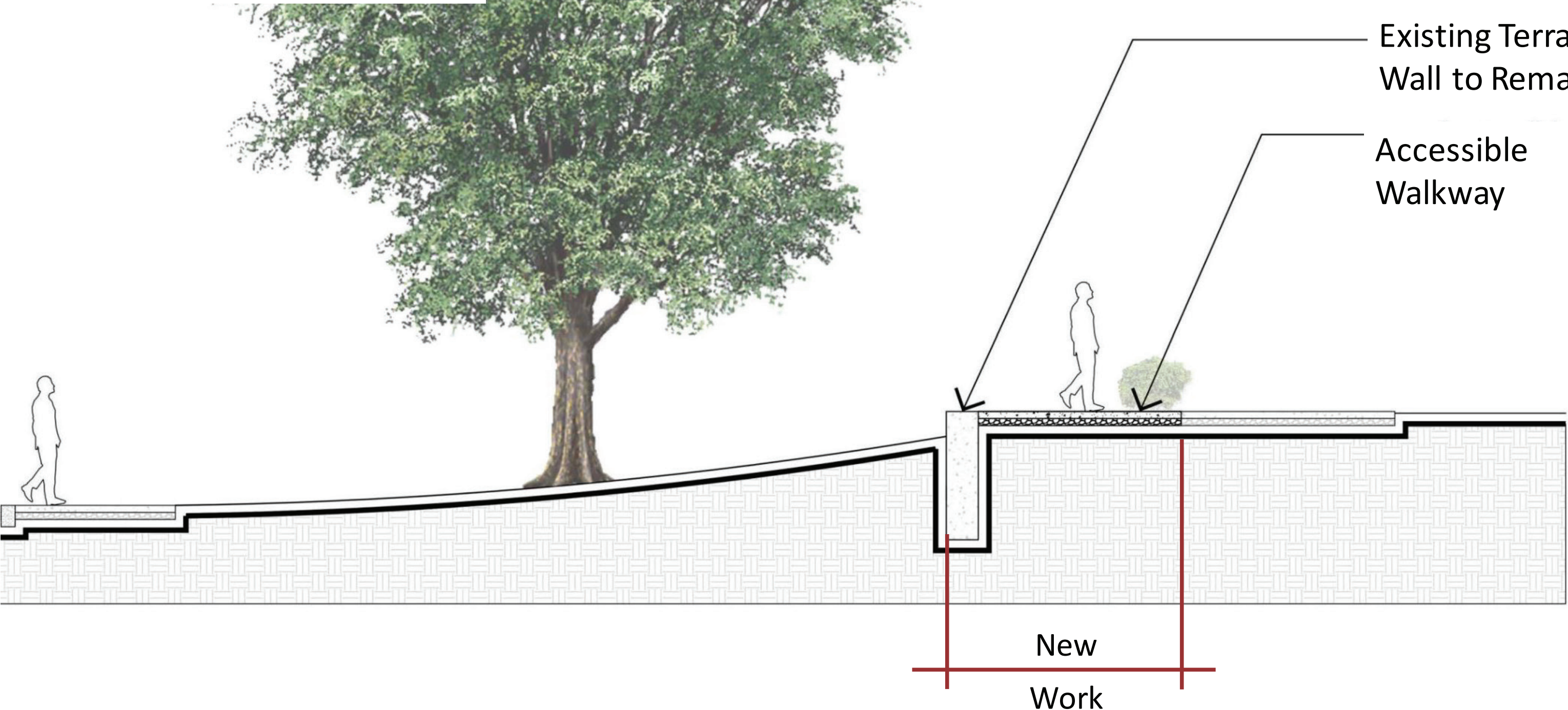
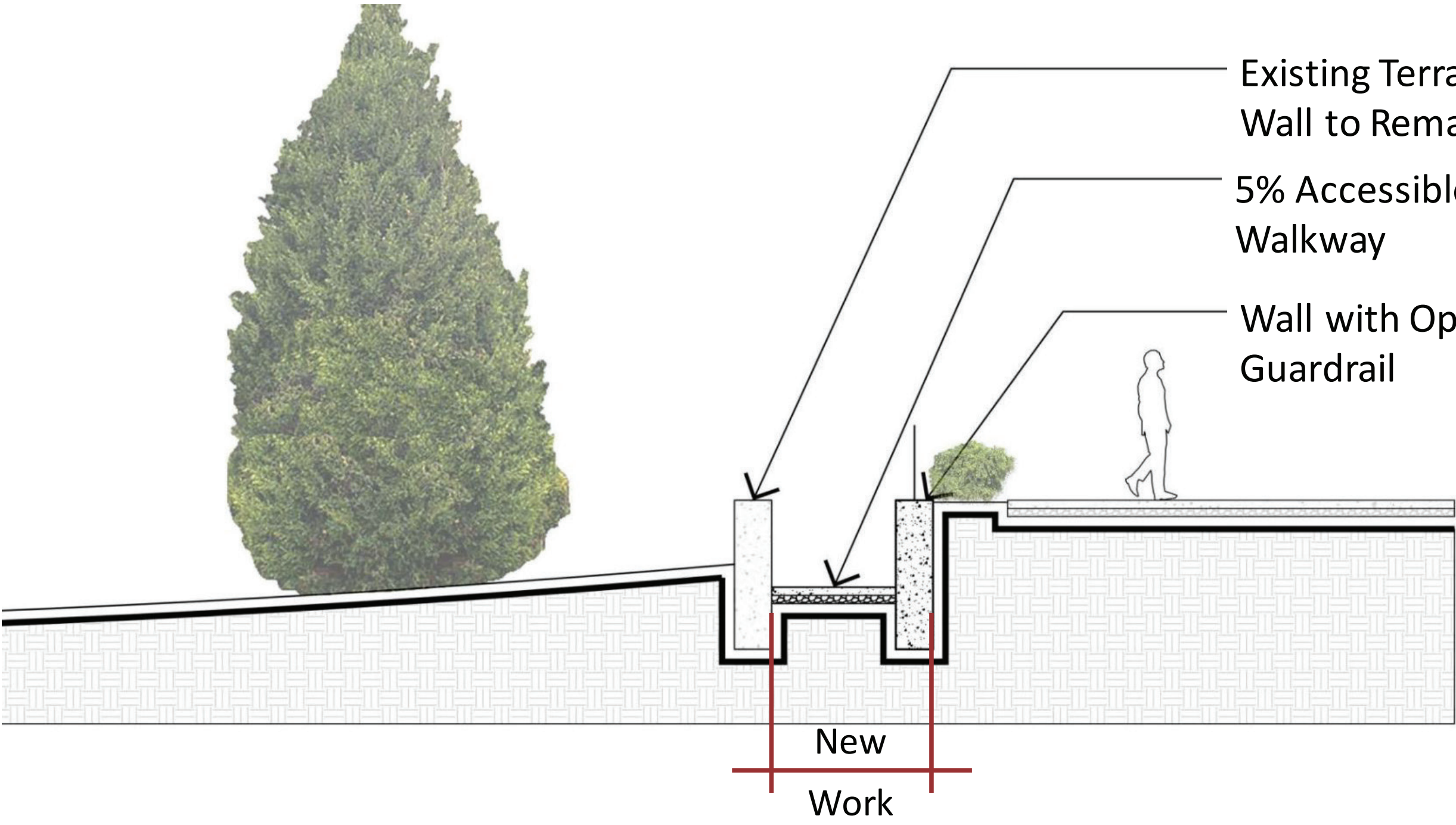


Option 1: Sloped Walkway within Existing Planter



Section A-A

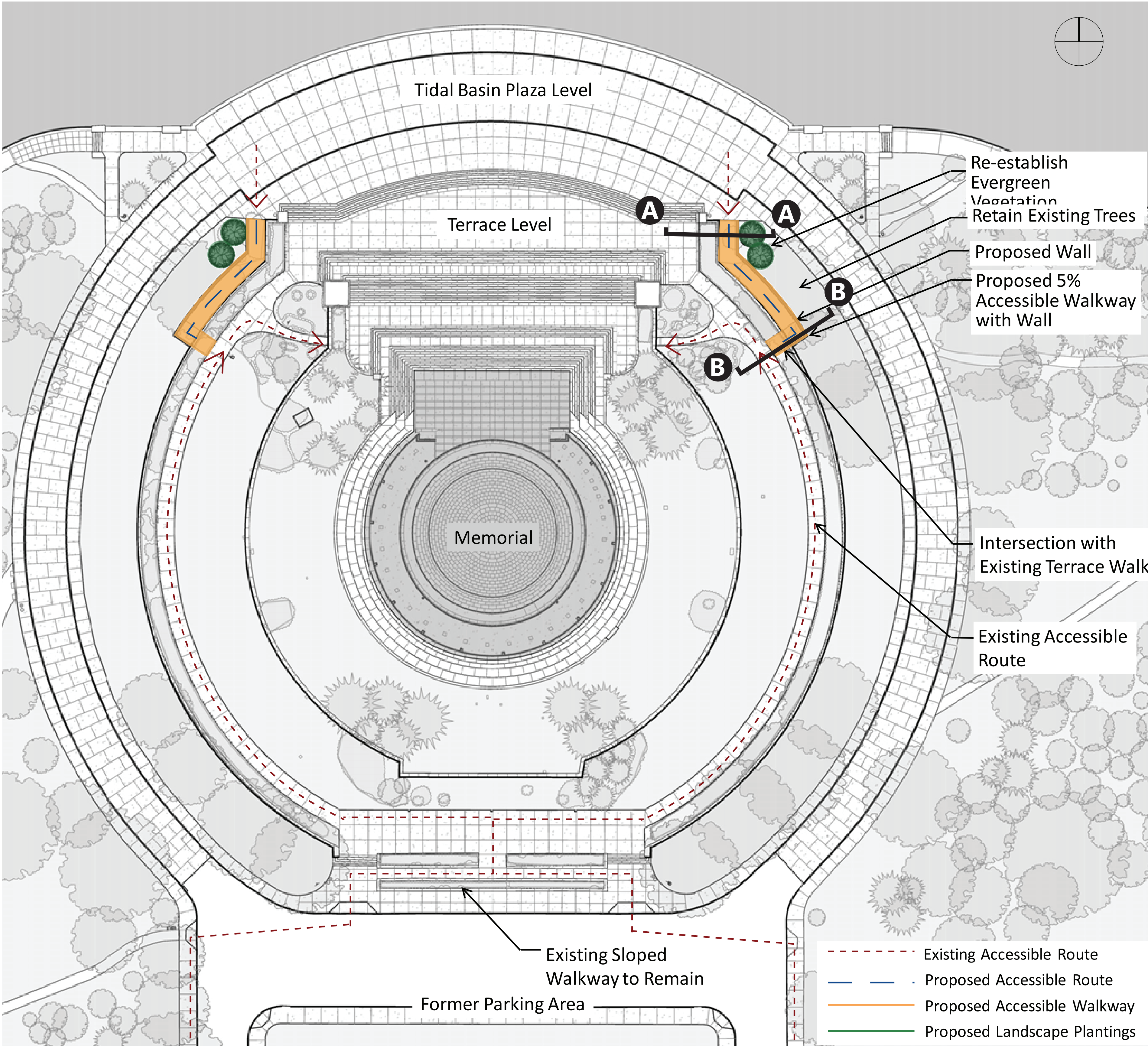
Section B-B



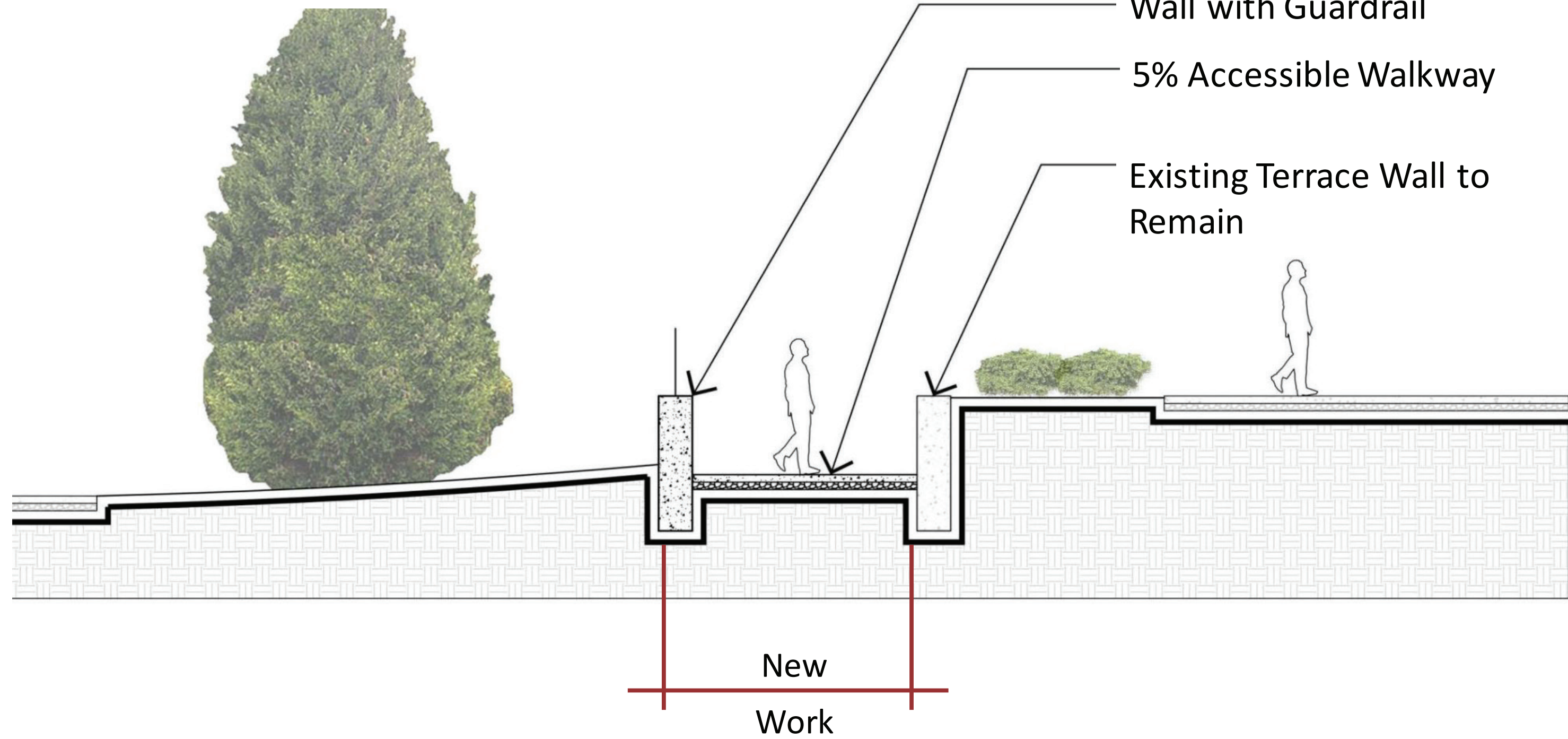




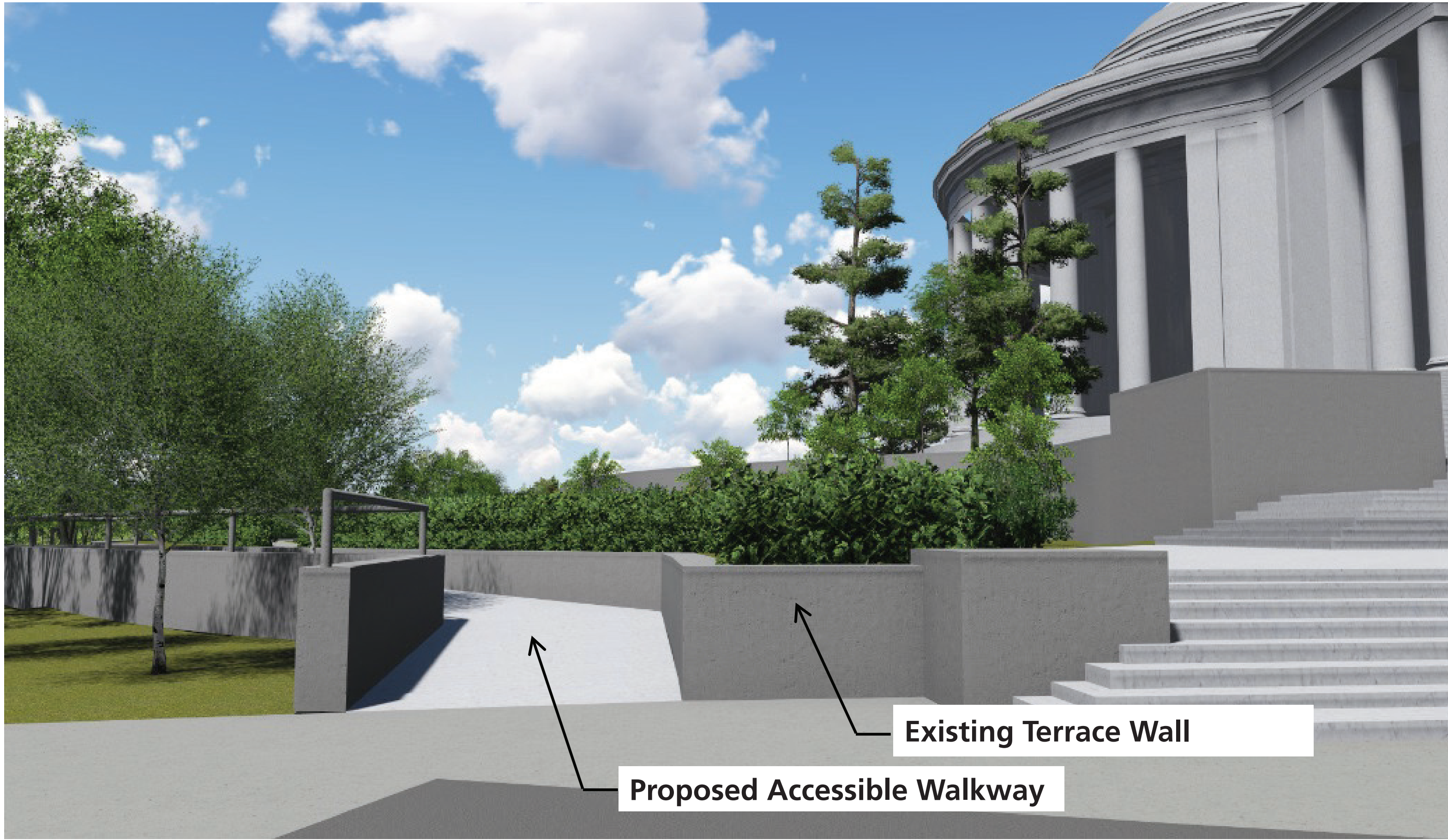
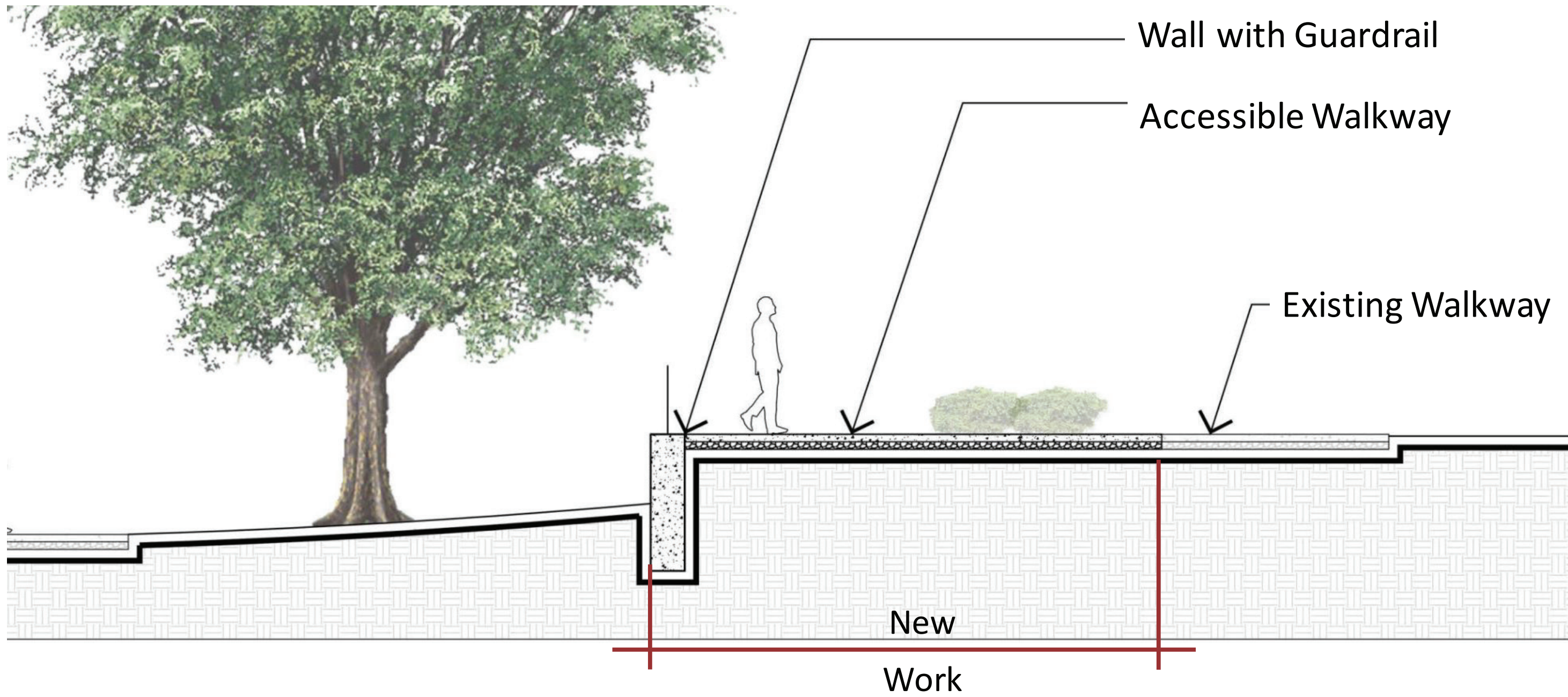
Option 2: North Sloped Walkway with Guardrail



Section A-A



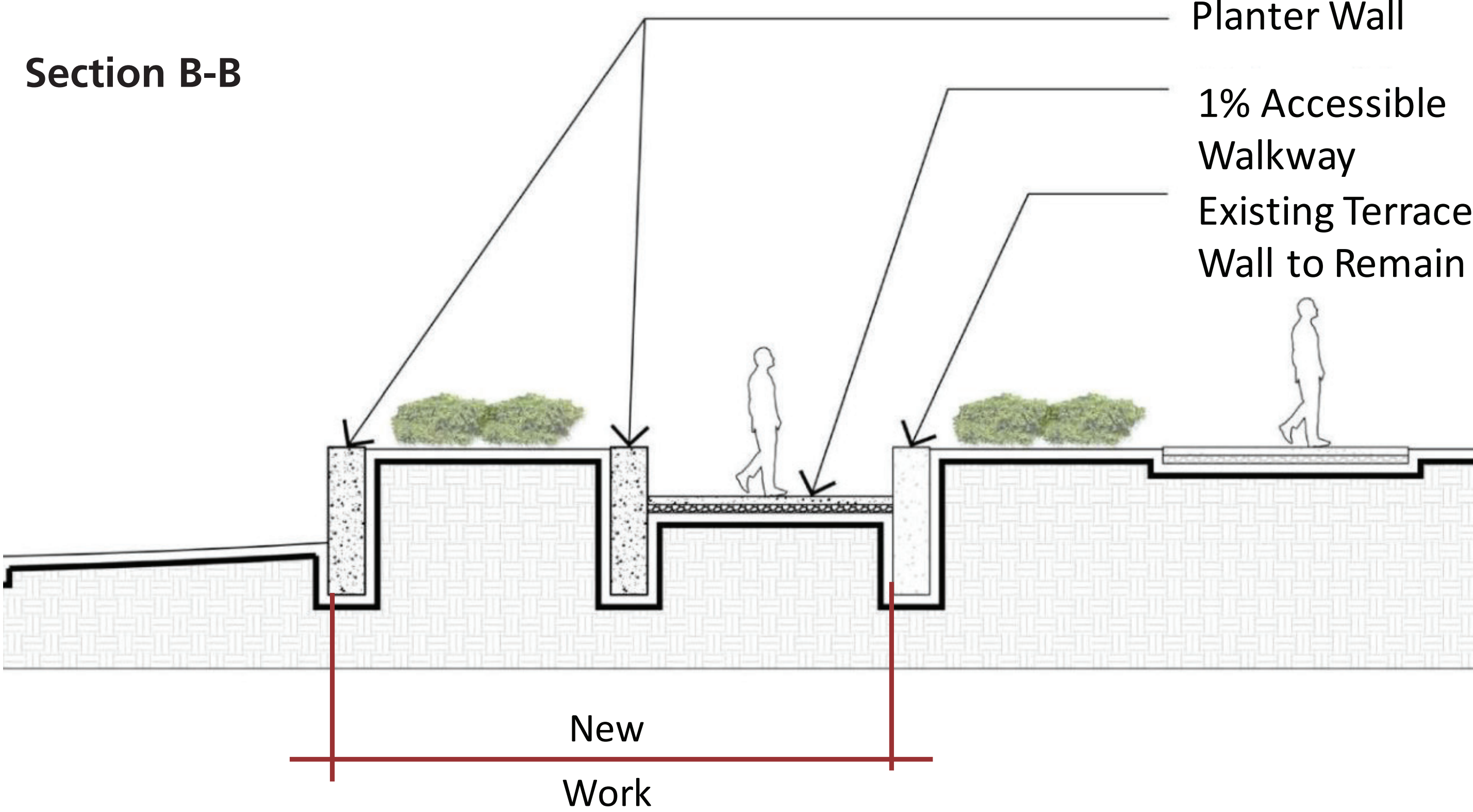
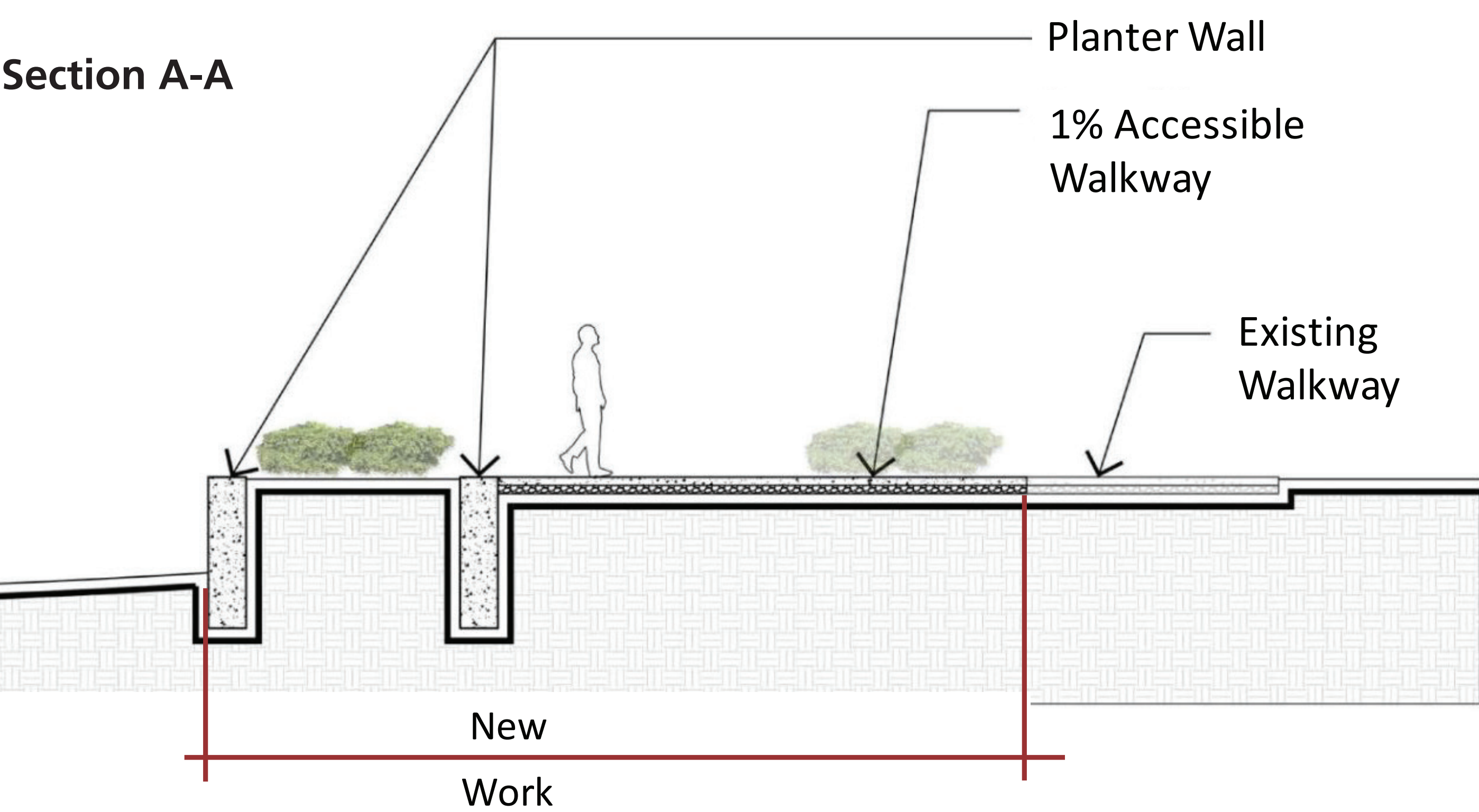
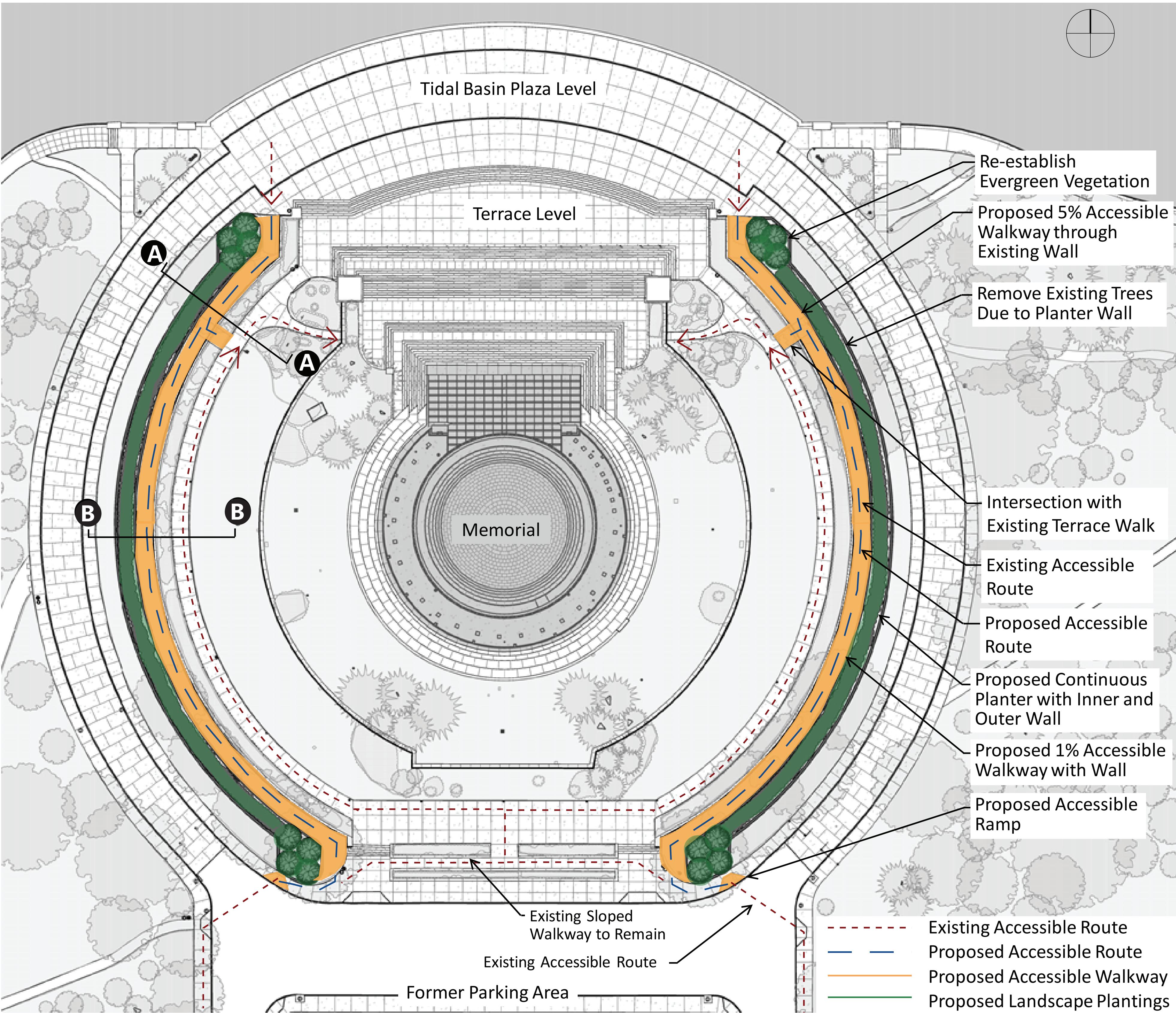
Section B-B







Option 3: Continuous Sloped Walkway with Planter



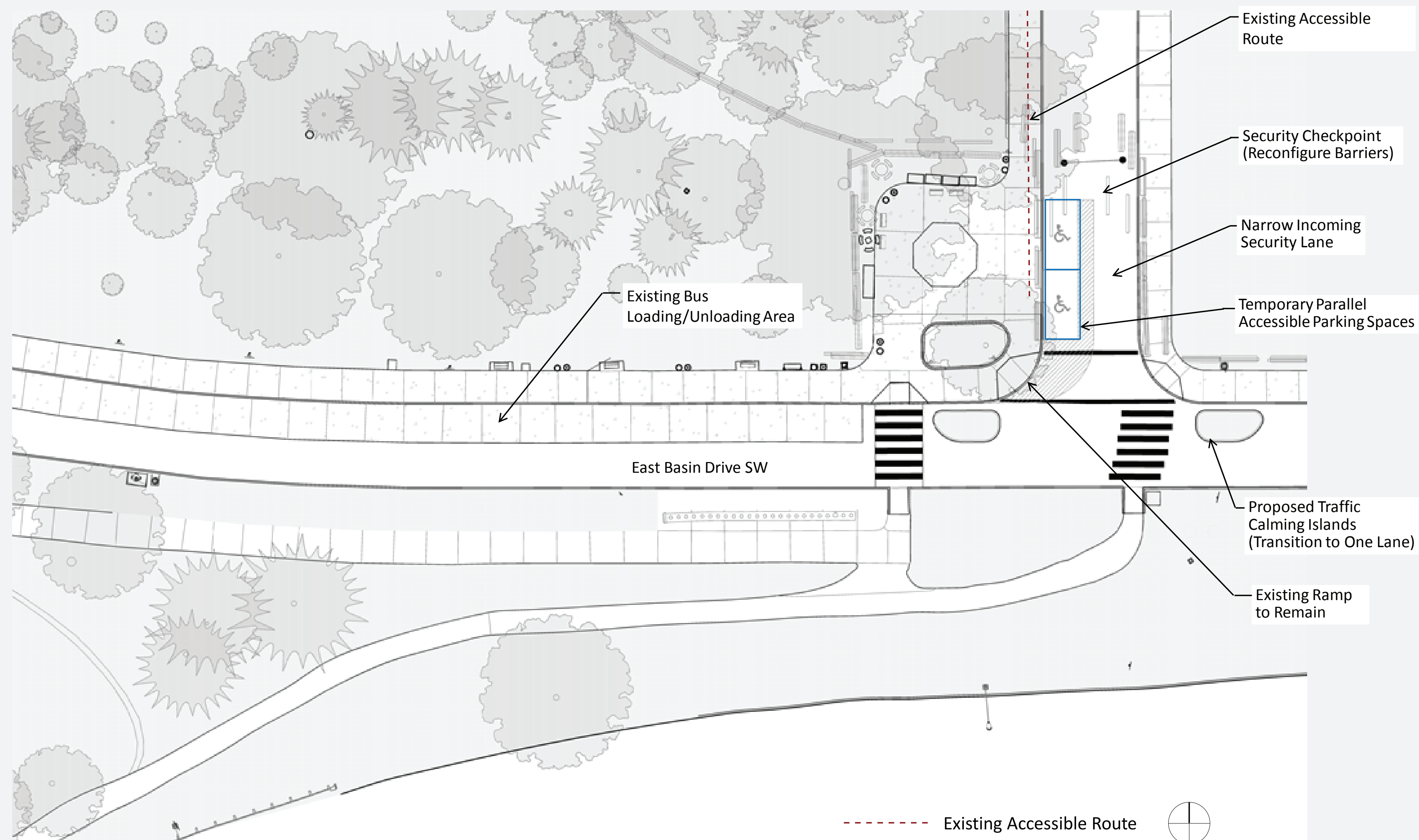




## Option 4: Parking and Bus Drop-Off Area Options

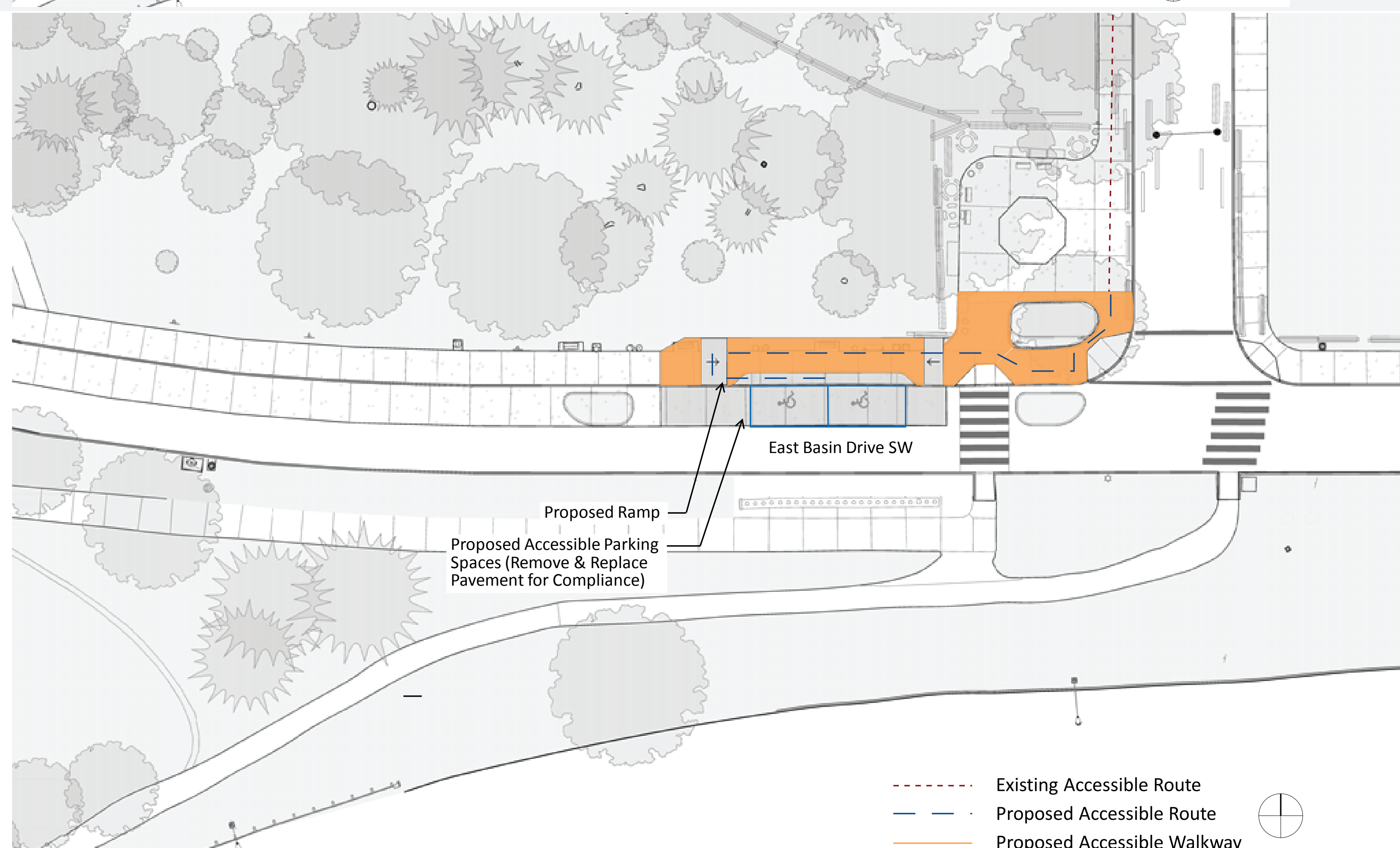
### Option 4.1: Temporary Parallel Parking at Kiosk Location

- Accessible parking removed from East Basin Drive
- Out of traffic for loading/unloading
- Use existing ramps for access to walkway
- Away from bus loading/unloading
- Room for maneuvering vehicles is very limited



### Option 4.2: Accessible Parking Spaces in Existing Location

- Accessible parking remains along East Basin Drive
- Adjacent walkway reconstructed to improve accessibility



### Option 4.3: Accessible Parking Spaces at Kiosk Location

- Accessible parking removed from East Basin Drive
- Out of traffic for loading/unloading
- Surrounding walkways reconstructed to improve accessibility
- Away from bus loading/unloading
- Sufficient room to easily maneuver vehicles is very limited

