



Effigy Mounds National Monument

Dear Friends,

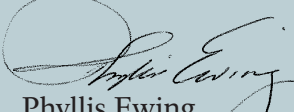
On behalf of the planning team, I am pleased to share this third General Management Plan newsletter with you and ask for your continued help in planning the future of Effigy Mounds National Monument. As a reminder, general management plans provide overall guidance for the long-term management of a national park service unit. This process requires that we develop a range of possible alternative future conditions and management strategies for the cultural and natural resources of this historic site. The plan will determine how the park will address resource management, visitor uses, development needs, and interpretation or education issues for the next 15 to 20 years.

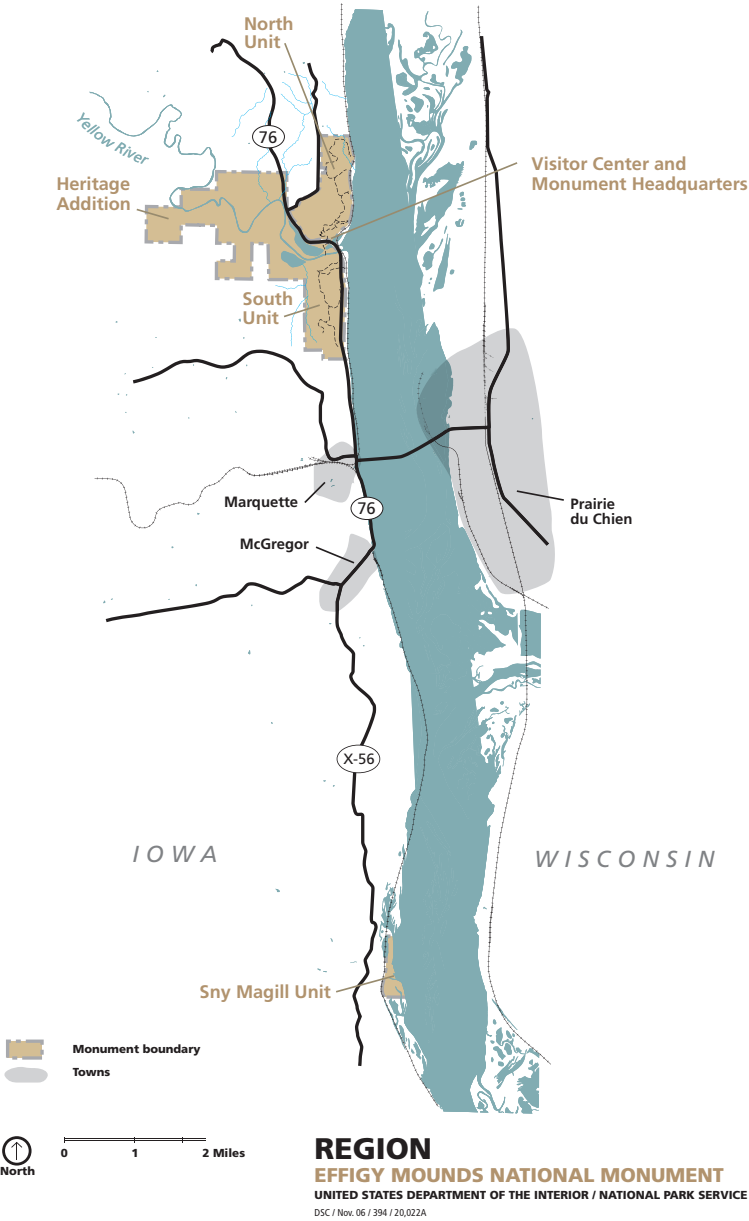
The planning team has developed a set of management zones that describe how specific portions of the park would be managed for resources, visitor experience and park operations. These zones were then assembled into two different configurations to create a range of alternatives or possible future management strategies.

This newsletter is your first opportunity to respond to the preliminary management alternatives. Your comments and suggestions will help in developing a preferred alternative that will be presented in the *Draft General Management Plan and Environmental Impact Statement* available for public review and comment in early 2008.

I welcome your continued participation in this important planning effort.

Sincerely,


Phyllis Ewing
Superintendent



Please plan to attend one of our Public Meetings

Phone: 563-873-3491

Tuesday, January 9, 2007

7:00 P.M.

Prairie du Chien City Hall
(Use parking lot door)
214 E. Blackhawk Avenue
Prairie du Chien, Wisconsin

Wednesday, January 10, 2007

7:00 P.M.

McGregor Public Library
334 Main Street
McGregor, Iowa

A park's purpose statement reflects why a park is a part of the national park system. Significance statements capture the essence of the park's importance to our country's natural and cultural heritage. Defining the national monument's significance helps managers make decisions that preserve the resources and values necessary to accomplish the monument's purpose.

Monument Purpose

Effigy Mounds National Monument preserves outstanding representative examples of significant phases of prehistoric Indian mound-building cultures in the American Midwest; protects wildlife and natural values within the monument; and provides for scientific study and appreciation of its features for the benefit of this and future generations.

Monument Significance

1. The national monument contains nationally significant archeological resources comprising one of the largest concentrations of Indian mounds in the United States including some of the finest and best preserved examples of effigy mounds in their original forms. These cultural features provide insight into the social, spiritual and ceremonial life of the people who were here prior to contact by Europeans.

2. The natural and cultural resources of the monument are intricately connected – the mound-building cultures were the result of the dynamic interface of people and their environment. The native vegetation communities associated with the mound-building era were the result of the topography and climate found in the geologically unique Driftless Area of the Upper Midwest. This environment produced microhabitats that support high flora and fauna diversity.
3. The monument contains historic resources that represent Euro-American settlement of the area and the displacement of historic American Indian culture. Conversely, early scientific research began the period of understanding and preserving the rich Indian culture.
4. The monument preserves and protects physical evidence of the cultural landscape, which documents the early and continuing scientific interest in the mounds and mound-building cultures. The monument's cultural resources and collections document the change from early archeology, narrowly focused on artifact recovery, to a change in philosophy and methods of modern archeological investigation that incorporates a variety of investigative techniques and native perspectives.
5. The monument is a sacred landscape identified by present-day members of the monument's affiliated tribes.

As part of this phase of the planning process, the planning team developed management prescriptions that describe the desired future condition of cultural and natural resources, the desired visitor experience, and the appropriate types of facilities. These prescriptions were then divided into four sets to form distinct zones. All areas of the monument were placed into one of these

zones (See alternative zoning maps). The management prescriptions helped guide the development of the preliminary management alternatives also presented in this newsletter. While there is a resource preservation mandate for the entire monument, the management emphasis varies by zone.



Preservation Zone

Emphasis in this zone would be to protect the resources while providing opportunities for visitors to experience the resource features through appropriate activities such as canoeing and occasional guided trail hikes. The natural setting created by preserving or restoring landscapes would provide a connection between the mound-building cultures and the environment that shaped their lives and beliefs. Independent visitor access on the ground would be limited both by developing no new trails and by returning some disturbed land (for example, old logging roads) to native vegetation.



Preservation/Trail Zone

The purpose of this zone is to place management emphasis on preserving the resources while providing hiking trails for visitors by either, preferably, reusing existing roads or, as necessary, building new low-impact trails. New trails could be built in this zone.

NOTE 1: The riverfront property is within the monument's legislated boundary but is not currently owned by the NPS. This property is zoned in all alternatives with the understanding that the zoning would not be in effect until the land was acquired. The railroad right-of-way would be in the Brown Zone unless it is abandoned.

NOTE 2: The exact location of some monument boundaries is uncertain. The boundary, and therefore the shape of the corresponding zone(s), could change when an approved boundary survey is completed.



Visitor Trail Zone

The purpose of this zone would be to provide visitor access via trails adjacent to resources. Interpretive media would allow visitors to understand and appreciate the meanings inherent in burial mounds, the cultures that produced them, and the associated landscape.



Development Zone

Emphasis of this zone would be on concentrated visitor services and monument operations. Visitors would receive primary orientation, information, and interpretation here. Facilities for monument operations are located in this zone.

PRELIMINARY MANAGEMENT ALTERNATIVES

The NPS planning team is required to develop and analyze alternative ways to achieve the desired future conditions while meeting the monument's stated purpose and protecting significant resources and values. The planning team considered suggestions from the public and park staff to develop the three

preliminary alternatives summarized here. The alternatives are not final and may change based on comment. They are being distributed to all who are interested so that the NPS can benefit from your review and comments.

ALTERNATIVE ACTION

Current management strategies and trends would continue under the no-action alternative. There would be no major changes to monument operations or visitor services other than those already in progress or approved. All cultural sites would continue to be maintained and preserved using current practices. The mounds would be protected by native vegetation. Management treatments would vary according to the cover and condition of individual mounds. Historic sites would be protected from damage but not otherwise managed. The landscape would continue to be managed to represent the environment associated with the mound-building cultures.

The Heritage Addition would not have a long-term management plan in place. The North, South, and Sny Magill units would continue to be managed under three different strategies.

Key Components of Alternative A

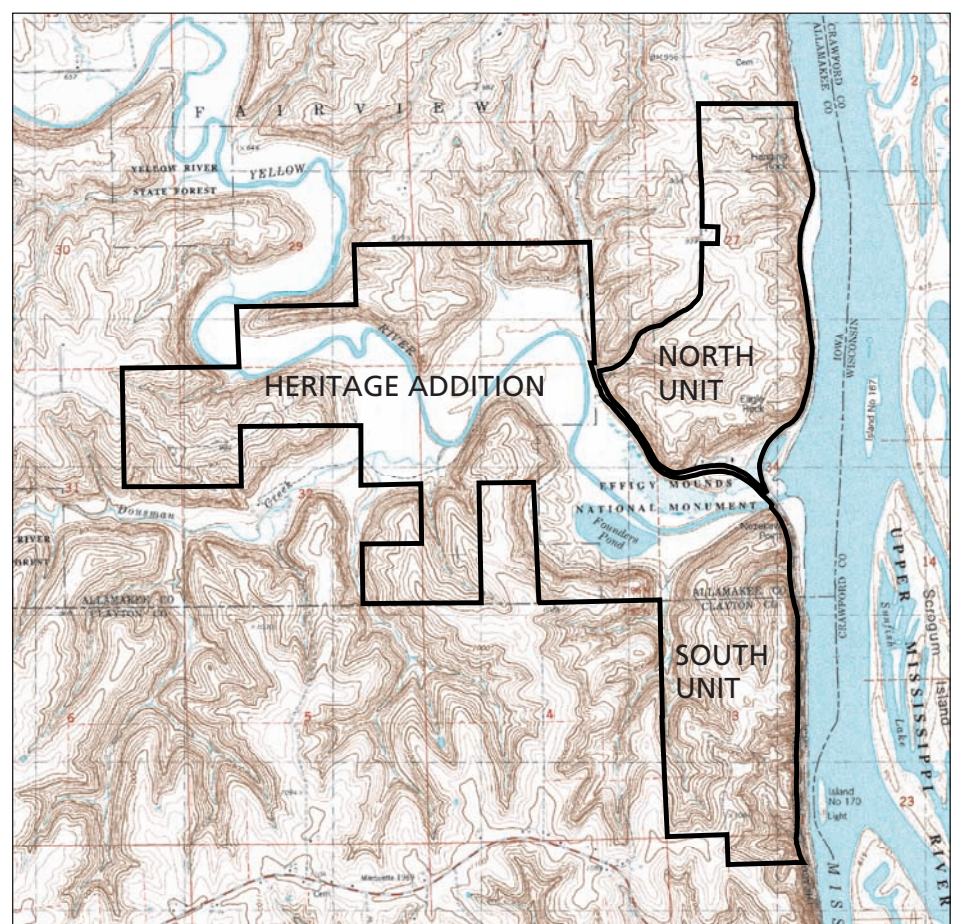
- Current management strategies and trends will continue.
- Trails and other facilities (benches, signs, etc.) would continue to be maintained.



Sny Magill

Legend

 Monument Boundary

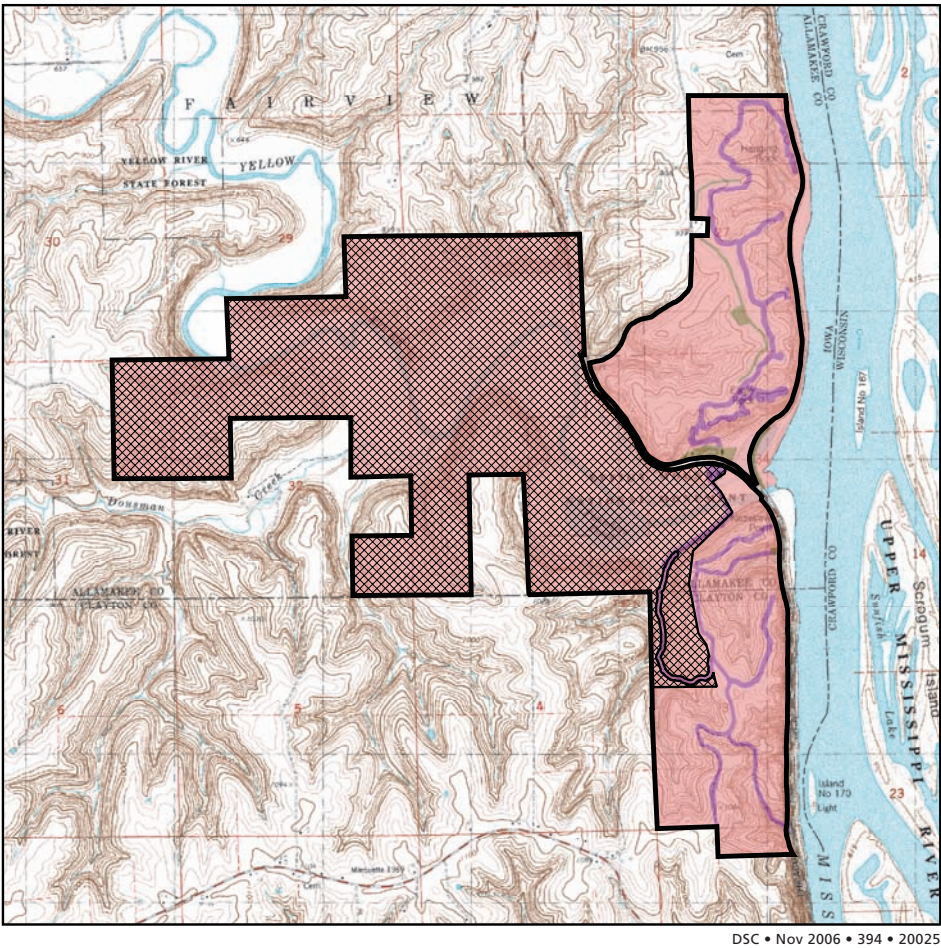
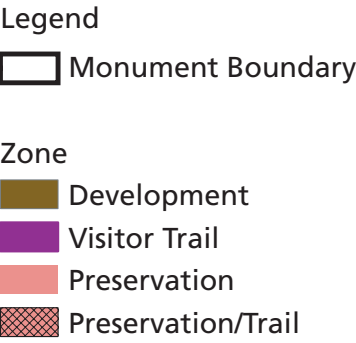
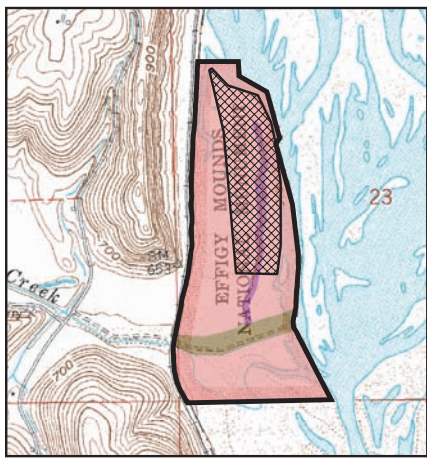


DSC • Nov 2006 • 394 • 20024

ALTERNATIVE B

Alternative B would provide an enhanced visitor experience with increased understanding of the monument while protecting natural and cultural resources. The monument would serve as a catalyst for mound research and management in the region. For example, there would be an expanded role for maintenance and interpretive staff who would work in cooperation with resource management to develop innovative management techniques. The desired visitor experience would be to make personal connections to the monument’s tangible resources through understanding of the significance of the American Indian mound-building story and its relationship to the heritage of the region. The landscape and visitor facilities would support a contemplative atmosphere with opportunities for the public to spend time reflecting upon the lives and legacy of the moundbuilders and the sacred nature of the site today. The inextricably linked cultural and natural resources would be managed to resemble the landscape associated with the mound building era. This natural setting would provide a connection to the mound-building cultures and the environment that shaped their lives and beliefs.

Some changes in developed space within the current footprint, or on new land should it be acquired from willing sellers, would be necessary to provide needed visitor services and research space. This would provide increased education, research, and access opportunities through the development of a permanent facility at Sny Magill with regional partners if adjacent land is acquired from a willing seller. Bookstore and museum space would be reconfigured in the existing visitor center to provide increased access and quality of exhibits and sales items. Education and interpretation of the natural resources of the park would be expanded. The monument would offer increased formal educational programming for visitors. Programming would emphasize reaching a broader segment of the public including improved accommodation of educational groups. Physical access to and interpretation at the Sny Magill mound group and T.H. Lewis mound group would increase. The visitor and research center at Sny Magill would promote education and protection activities that would support mound management throughout the region and allow for partnering with outside groups to enhance mound building culture research in the region. If land adjacent to Sny Magill is acquired, a visitor and



DSC • Nov 2006 • 394 • 20025

research center would be built on that land to promote education and protection activities in support of mound management and research into mound culture throughout the region as well as allow for increased partnering with outside groups.

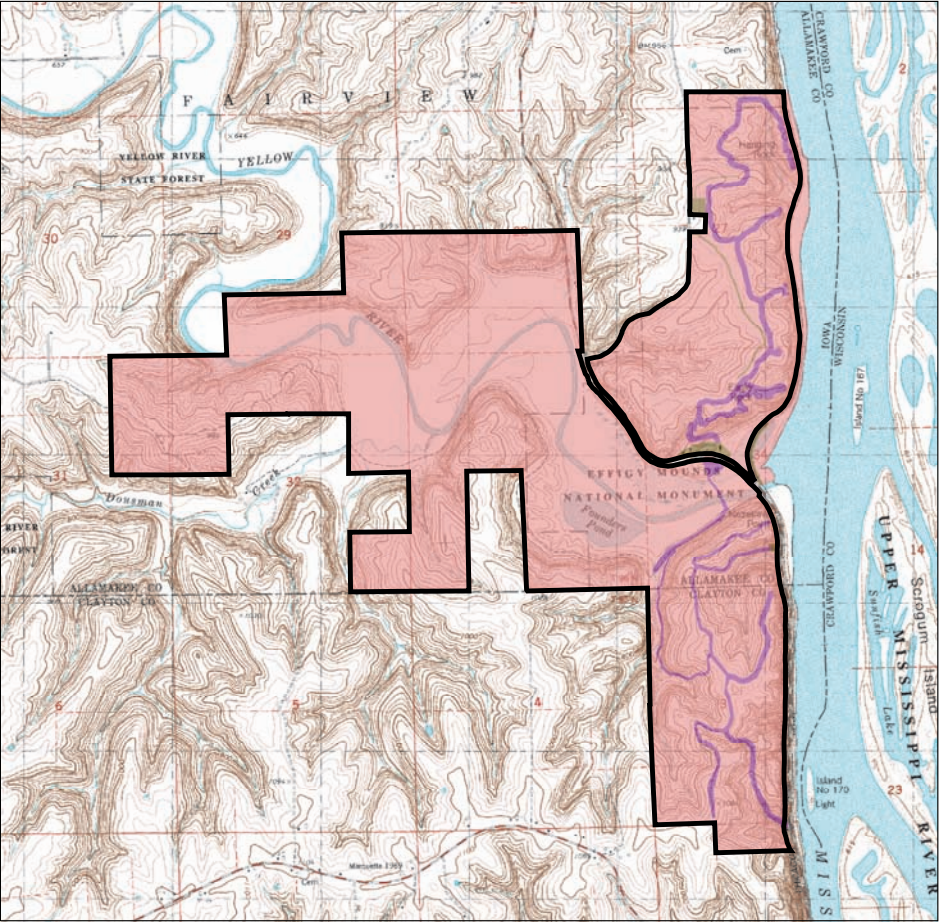
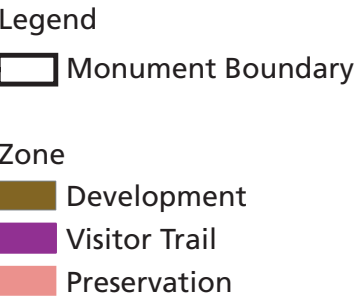
Key Components of Alternative B

- Heritage Addition: Some existing logging roads maintained as trails, some visitor trails developed, bridges over Dousman Creek and Yellow River. Pursue “no-wake” restriction for Yellow River to protect resources and visitor experience.
- Visitor Center and Maintenance Area: Most maintenance functions maintained at their present location, some moved to North Unit. Former housing used for administrative purposes. Expanded interpretive space in visitor center.
- North/South Units: No new trails (other than those already approved), existing trails could be re-aligned for resource protection, there would be an increased emphasis on landscape preservation.
- Sny Magill: A low-profile boardwalk provided to protect mounds, visitor contact station and research center (with partners) on adjacent property if acquired from a willing seller.

ALTERNATIVE C

Alternative C would emphasize the natural resource environment and its interconnectedness with the cultural resources. It would also increase formal education and outreach programs. Natural viewsheds, soundscapes, and odorscapes would be protected as much as feasible under this alternative. Changes in development would be limited to an accessible, low visibility boardwalk at the Sny Magill unit, relocation of most of the maintenance facility to the North Unit, reallocating facility (building) space in the developed area to provide meeting and rainy-day areas for educational and other groups, and planting prairie vegetation in the (main unit) visitor center area and on land adjacent to the Sny Magill mound group. The inextricably linked cultural and natural resources would be managed as a landscape appropriate to the environment associated with the mound building era. The natural setting created by preserving or restoring landscapes would provide a connection between the mound-building cultures and the environment that shaped their lives and beliefs.

Education and interpretation of the natural resources of the park would be expanded. Education and outreach efforts would continue in the region. The preservation emphasis would continue as it is today in the North, South, and Sny Magill units. Additional trail development would be only allowed in previously developed corridors of the monument when necessary for visitor safety or resource protection. The visitor experience in the Heritage Addition would be primarily self-directed resource observation by canoeing on the Yellow River, or by periodic special ranger-led hiking and canoe tours in a quiet, contemplative setting to preserve the sense of sacredness of the mound groups.



DSC • Nov 2006 • 394 • 20026

Key Components of Alternative C

- Heritage Addition: A few old roads maintained as trails for administrative and occasional public use, the remaining old roads would be rehabilitated. No new visitor trails would be developed.
- North/South Units: Most maintenance functions moved to North Unit, some new trails allowed for interpretation of prairies.
- Visitor Center and Maintenance Area: Room for educational groups in space vacated by maintenance, former housing used for administrative space, expanded interpretation and museum in visitor center.
- Sny Magill: Minimal development, a roving ranger would provide interpretation and NPS presence during periods of high visitation.

UNITED STATES DEPARTMENT OF THE INTERIOR
NATIONAL PARK SERVICE
DENVER SERVICE CENTER - MATTHEW SAFFORD
12795 WEST ALAMEDA PARKWAY
P.O. BOX 25287
DENVER, CO 80225-0287

FIRST-CLASS MAIL
POSTAGE & FEES PAID
NATIONAL PARK SERVICE
PERMIT NO. G-83

OFFICIAL BUSINESS
PENALTY FOR PRIVATE USE, \$300



PREFERRED ALTERNATIVE

The NPS has not yet developed a preferred alternative. The preferred alternative will be designated after we obtain public input and conduct a decision-making analysis. It will be described in the *Draft General Management Plan/Environmental Impact Statement*. The NPS preferred alternative could be one of the preliminary alternatives shown in this newsletter or, more likely, it could be made up of parts from one or more of the preliminary alternatives.

STUDIES TO ACCOMPANY THE PLAN

BOUNDARY ADJUSTMENT

As part of the NPS planning process, the planning team will assess areas to determine if any additional lands are necessary or desirable to fulfill Effigy Mounds National Monument’s mission. Any lands proposed for addition to the boundary must

- include significant resources or opportunities for public enjoyment related to purposes of the park,
- address operational and management issues such as access and boundary identification by topographic or other natural features or roads,
- otherwise protect park resources that are critical to fulfilling the monument’s mission.

Additional land would be acquired only from a willing seller. The plan will address possible boundary adjustments separately from the alternatives (i.e., boundary adjustments will not be tied to a specific alternative). However, if land is acquired from a willing seller, it may be used in different ways depending on the alternative.

RIVER STUDY

Because the section of the Yellow River, which flows through the Monument, is on the Nationwide Rivers Inventory, a study of this section’s eligibility and suitability as a part of the Wild and Scenic River System will accompany this general management plan.



PLANNING TIME FRAME

The general management planning process for Effigy Mounds National Monument is expected to take several years to complete. A summary of the process and anticipated time frame is shown in the table. We are on step three of the process and the public will have opportunities to share ideas and comments throughout the remainder of the process.

After reviewing the comments received from this newsletter, the planning team will refine the alternative concepts. Comments from the public will help guide the team in the production of complete alternatives and development of the preferred alternative in the *Draft General Management Plan and Environmental Impact Statement*.

We Are Here	Step	Time Frame	Planning Activity	How You Can Be Involved
	1	2005	Initiate Project The planning team assembles,begins to identify the project’s scope, customizes the planning process, and begins to establish contacts with participants.	
	2	Fall 2005 – Winter 2005	Define Planning Context and Foundation The team examines why the national monument was established and confirms its mission, purpose, significance. Team members collect and analyze relevant data and public comments.	Read the newsletter. Send us your ideas and comments and/or attend a public meeting.
	3	Spring 2006 – Early 2007	Develop and Evaluate Alternatives Using staff and public input, the team explores what the monument’s future should look like and propose a range of possible alternatives.	Read the newsletter. Send us your ideas and comments and/or attend a public meeting.
	4	Spring 2007 – Early 2008	Prepare a Draft Document <i>A Draft General Management Plan / Environmental Impact Statement</i> is published. The draft document describes the alternatives and impacts of implementing each. Based on the impacts and public input, a preferred alternative is identified in the document.	Review the draft plan. Send us your comments and/or attend a public meeting.
	5	Spring 2009	Publish Final Document Based on review by the National Park Service and the public, the team revises the <i>General Management Plan / Environmental Impact Statement</i> and distributes a final plan. The plan is approved in a published record of decision.	Read the final plan, including NPS responses to substantive public comments and official letters.
	6	Summer 2009 and beyond	Implement the Approved Plan After the Record of Decision is signed, the plan will be carried out as funding allows.	Work with the national monument to implement the plan.

HOW TO PARTICIPATE

The planning team welcomes your comments anytime in the planning process. Right now, we would like to hear your ideas and recommendations on the management zone prescriptions and the preliminary alternative concepts presented in this newsletter. Please comment through any one of the following methods:

- 1. Fill out the enclosed comment form and drop it in the mail
- 2. Attend one of the public meetings shown on page one of this newsletter
- 3. Fill out an electronic comment form at <http://parkplanning.nps.gov>
- 4. Mail or drop off a letter to the

Superintendent
Effigy Mounds National Monument
151 Highway 76
Harpers Ferry, IA 52146-7519.