

## **DWIGHT D. EISENHOWER MEMORIAL**

**COMMISSION OF FINE ARTS**

REVISED FINAL DESIGN SUBMISSION

SUBMISSION DATE: SEPTEMBER 7, 2017

MEETING DATE: SEPTEMBER 20, 2017



TABLE OF CONTENTS

- 1.0 DESIGN REVISION SUMMARY
- 2.0 COMMEMORATIVE ART UPDATE
- 3.0 LANDSCAPE DESIGN UPDATE





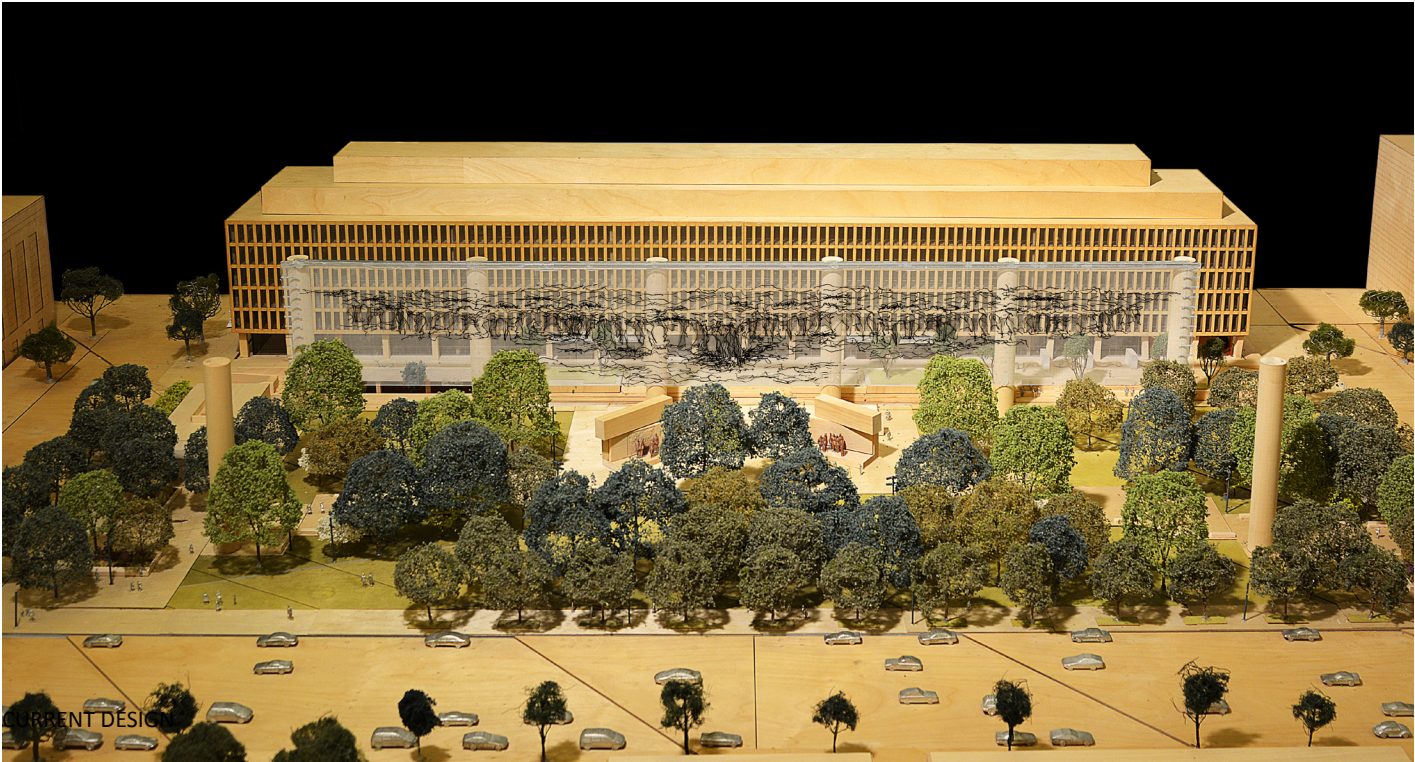
DESIGN REVISIONS SUMMARY

Last May the design team presented a revised design to the Commission of Fine Arts. The design updates included a new proposal for the Young Eisenhower sculpture on the Overlook and a three panel tapestry mockup with the revised Normandy landscape art. As a result of the mockup review, the Commission advised the team to continue to refine the fabrication methods and tapestry art to improve the legibility of the image. Additionally, they recommended the design team reconsider the removal of the four trees from the project, and explore other locations for the statue of Eisenhower as a young man within the park now that this figure is no longer central to the contextual framework of the memorial.

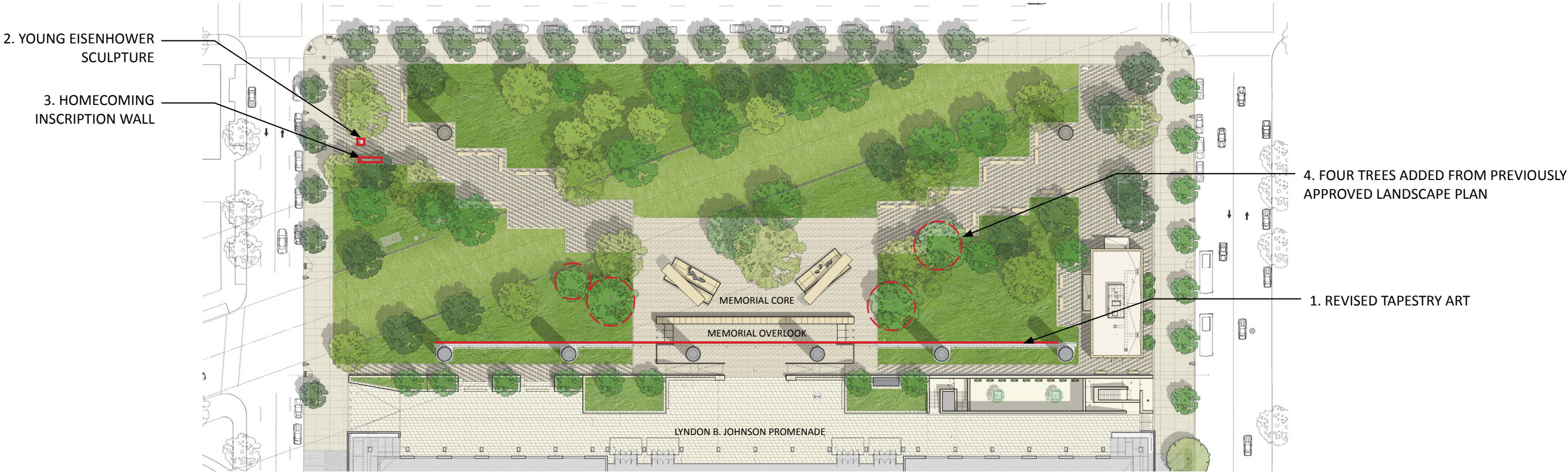
After study of the tapestry artwork, the design team concluded that a graphic approach to the tapestry art would be more successful against the backdrop of the Lyndon B. Johnson building. The current art on the tapestry is an artistic abstract drawing of the Normandy coastline. The new image has a higher contrast to improve the image clarity and overall increased transparency. A larger mockup will be available on the day of the Commission Meeting for review at the project site. The current design also includes a new location for the Young Eisenhower sculpture near the Northwest entry plaza. The canopy tree design has returned the four trees around the Memorial core to the project in response to the Commission comments.

The current design updates include:

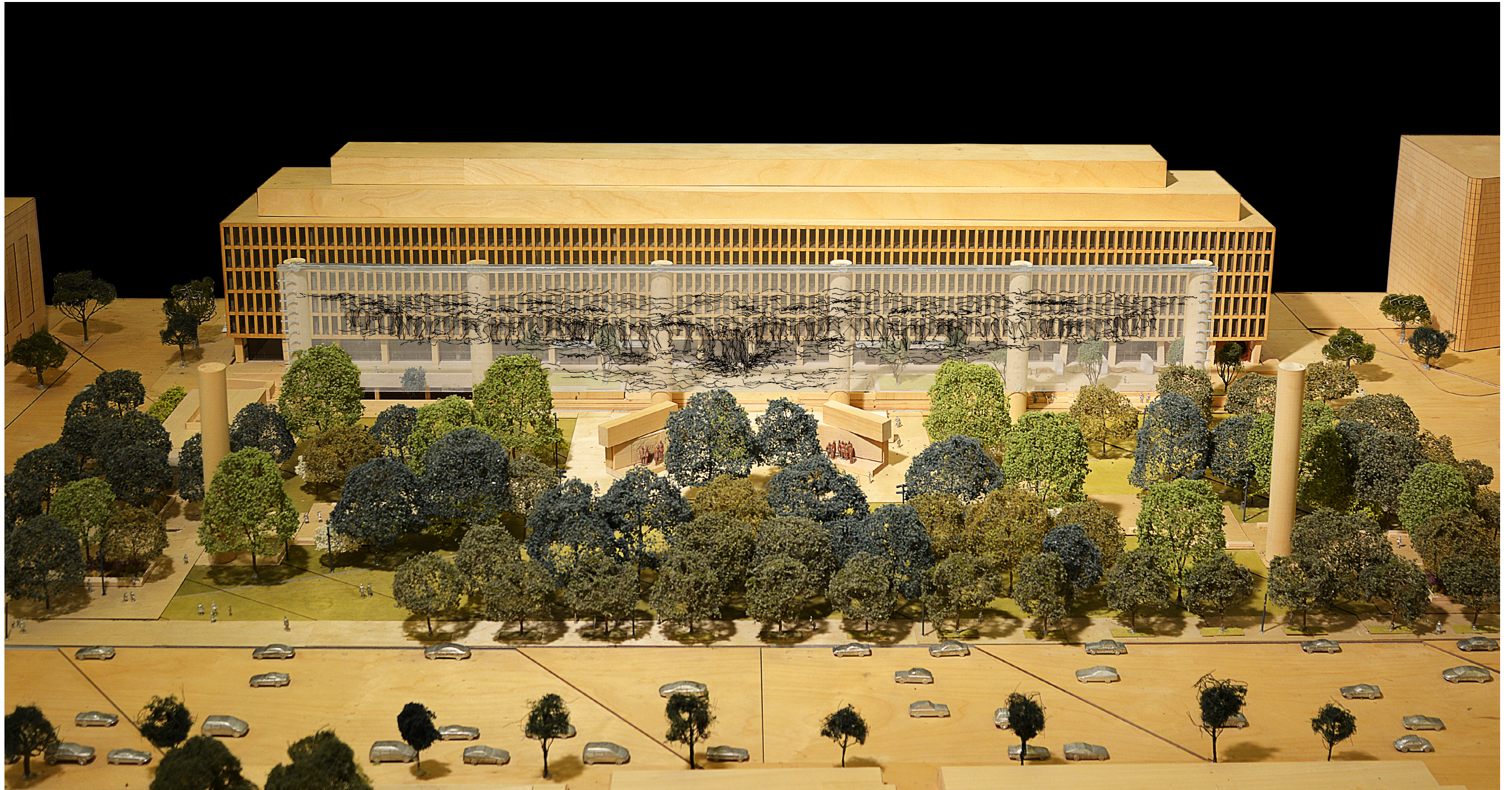
- 1. Revised Tapestry Art
- 2. New location for Young Eisenhower Sculpture
- 3. New Inscription Wall with Abilene Homecoming Speech
- 4. Four added trees from previously approved design.



CURRENT DESIGN



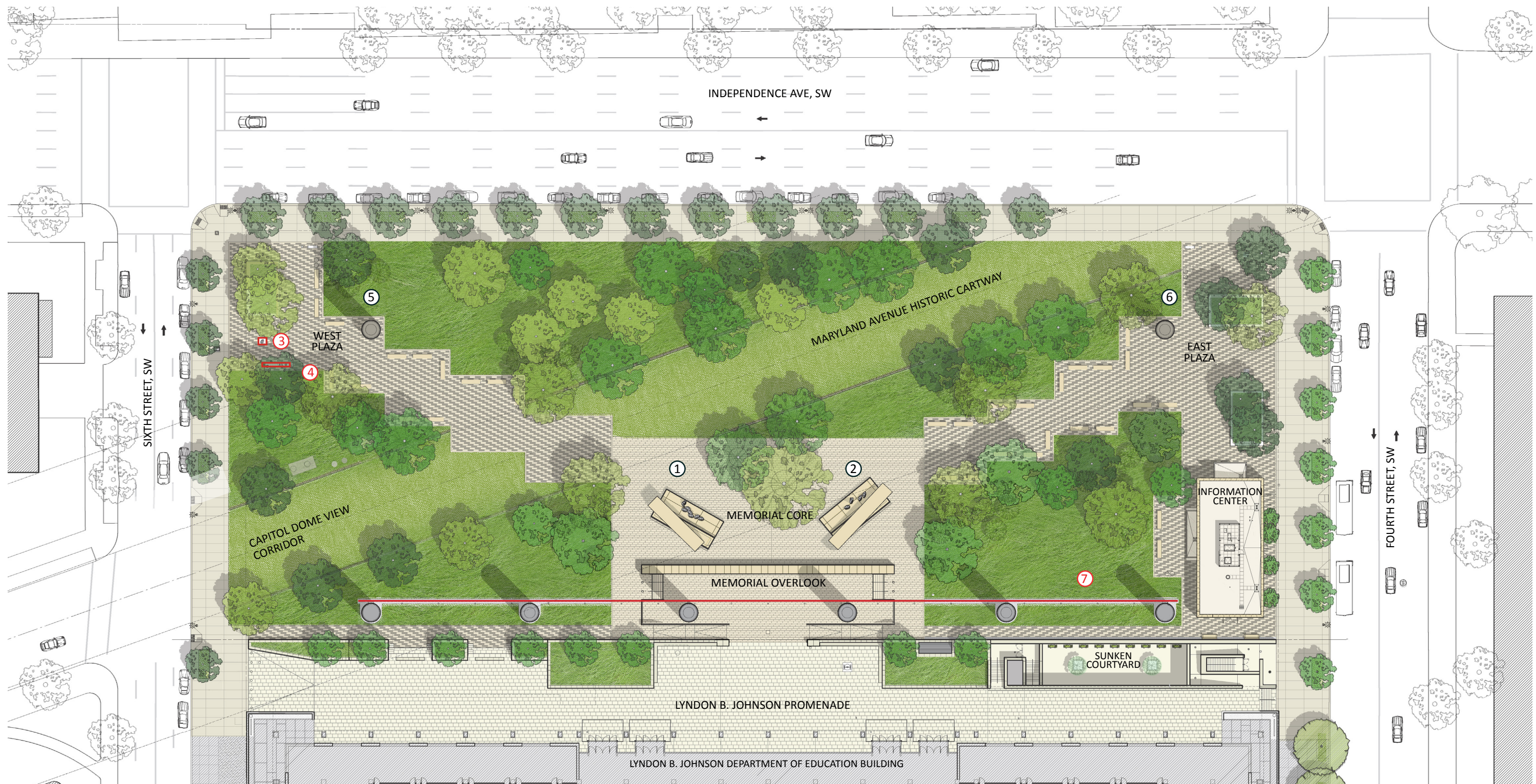




AERIAL VIEW OF THE MEMORIAL WITH THE REVISED TAPESTRY ART

1.0 - DESIGN REVISION SUMMARY





- ① GENERAL EISENHOWER MEMORIAL ELEMENT
- ② PRESIDENT EISENHOWER MEMORIAL ELEMENT
- ③ YOUNG EISENHOWER SCULPTURE
- ④ HOMECOMING INSCRIPTION WALL
- ⑤ GENERAL EISENHOWER COLUMN
- ⑥ PRESIDENT EISENHOWER COLUMN
- ⑦ SOUTH TAPESTRY



DESIGN REVISION SUMMARY - 1.0



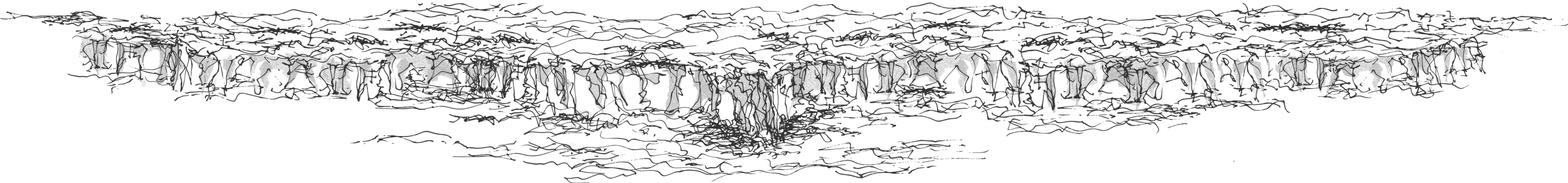
MEMORIAL TAPESTRY

The tapestry and colonnade are unique methods of memorialization presented for the Eisenhower Memorial. The tapestry serves as a commemorative memorial element as well as an urban site planning element, to create both a physical and symbolic context for Dwight D. Eisenhower. The stainless steel tapestry, positioned at the southern perimeter of the site, frames the urban memorial park.

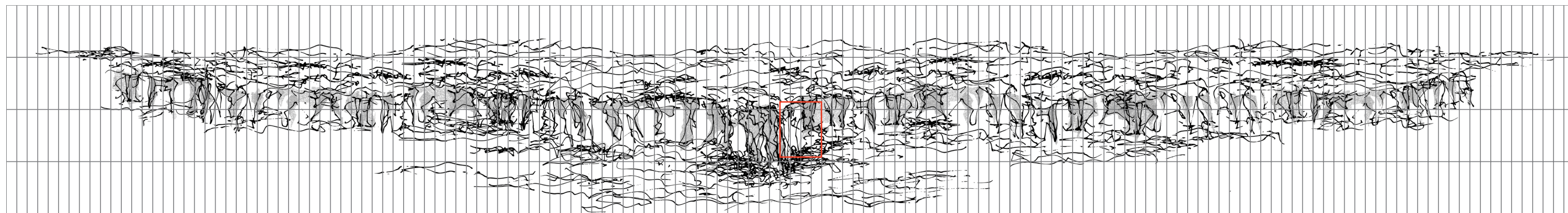
The Commission of Fine Arts has endorsed a revised thematic context for the story of Eisenhower planned for the Memorial and the revised tapestry art from the rural Kansas landscape to an aerial scene of the Normandy coast. Last May, the design team produced a three panel mockup of the tapestry with the revised Normandy landscape design. In response to the new mockup, the Commissioners recommended the team continue to refine the image and the fabrication method of the tapestry to improve the image clarity.

After extensive study of the linework methods for rendering the tapestry photographic image, and review of both tapestry mockups previously presented to the Commission, the team concluded that a graphic approach to the Normandy landscape art with higher contrast would be more successful for improving image clarity against the Lyndon B. Johnson, Department of Education. The revised design is an abstract artistic depiction of the cliffs of Normandy coastline that will increase legibility and the transparency of the overall tapestry. In the new composition, the cliffs of Normandy were enlarged, the horizon line was raised and the east and west edges of the image were softened. Point du Hoc remains at the center of the tapestry art. The linework that is integral to the art image allows the fabrication method for the water portions and landscape to be treated similarly in the panel production. Shading will differentiate the cliffs from the upper landscape and water.

A larger tapestry mockup of this revised art design will be on display in front of the Lyndon B. Johnson building on the day of the CFA Commission meeting for review.



PROPOSED NEW IMAGE FOR THE TAPESTRY



PANELIZED TAPESTRY SHOWING THE MOCK UP LOCATION IN CONTEXT







VIEW OF TAPESTRY FROM THE MEMORIAL CORE

The expansive Normandy cliff is a prominent feature in the views of the tapestry at the Memorial Core. The iconic Point du Hoc landmark on the coastline is the center of the composition flanked by the Presidential and General Memorial sculptural figures. This arrangement invites visitors to learn about Normandy and the location of one of Eisenhower's greatest achievements. Normandy symbolically remains a powerful reminder of the sacrifices of D-Day and how this pivotal event

lead to lasting peace that shaped our nation's history in the years that followed. The artistic image symbolically represents the peace Eisenhower won as Supreme Allied Commander and the peace he kept and nurtured as the 34th President during a unique time when the United States emerged on to the global stage. The tapestry backdrop frames the context of Eisenhower's service to the country and his enduring legacy as a key figure in the 20th century.



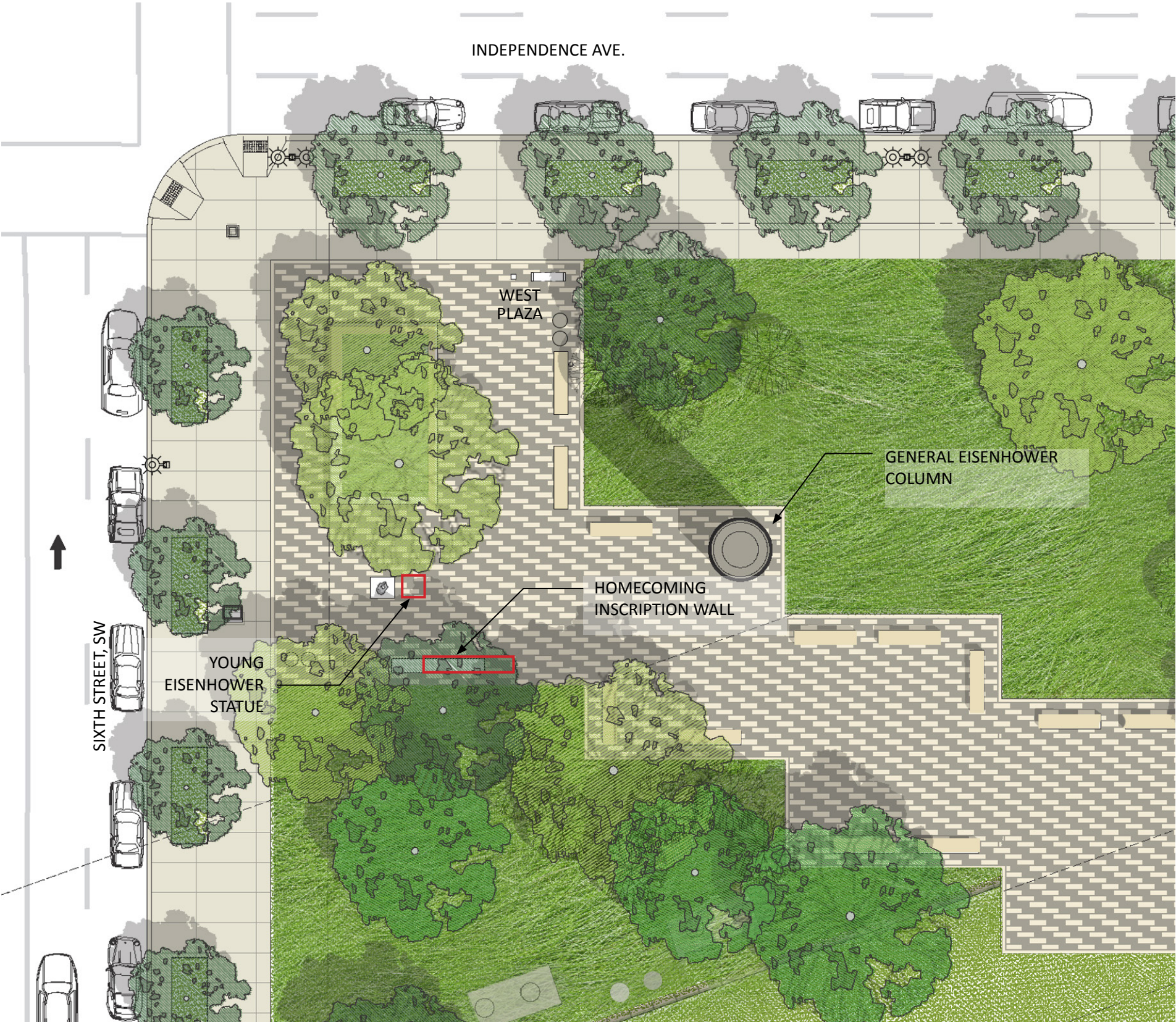
YOUNG EISENHOWER SCULPTURE

The statue of Eisenhower as a young man has been repositioned and refined in response to the CFA and NCPC Commission comments.

The statue is now located at the northwest plaza entrance into the Memorial. The refined sculpture is fully seated on a podium. Adjacent to the statue, on the south edge of the plaza, is an inscription wall with an excerpt from the Homecoming speech that Eisenhower gave in Abilene in 1945 as part of his tour throughout the United States celebrating the Allied victory. In this speech, Eisenhower references his dreams as a young man and strong connection with his hometown of Abilene, Kansas.

The sculpture showing the Kansas youth and the Abilene Homecoming inscription encourages visitors entering the memorial to connect with Eisenhower’s personal story as an American story.

Several other locations for the Young Eisenhower statue were considered, including a central location on the Overlook and an option near the entrance to the Department of Education on the Promenade. The Young Eisenhower sculpture in this location balances the larger entry plaza and Information Building at the eastern end of the site.







EISENHOWER AS A YOUNG MAN MAQUETTE DETAIL BY  
SERGEY EYLANBEKOV

### YOUNG EISENHOWER STATUE UPDATE

The pose of Young Eisenhower has been refined by the sculptor. The maquette shows the figure seated on a limestone pedestal that is 30” high. The figure looks toward the memorial. The youthful Eisenhower offers a counterpoint to the General and Presidential portrait figures at the Memorial core that depict more serious moments in Eisenhower’s life.



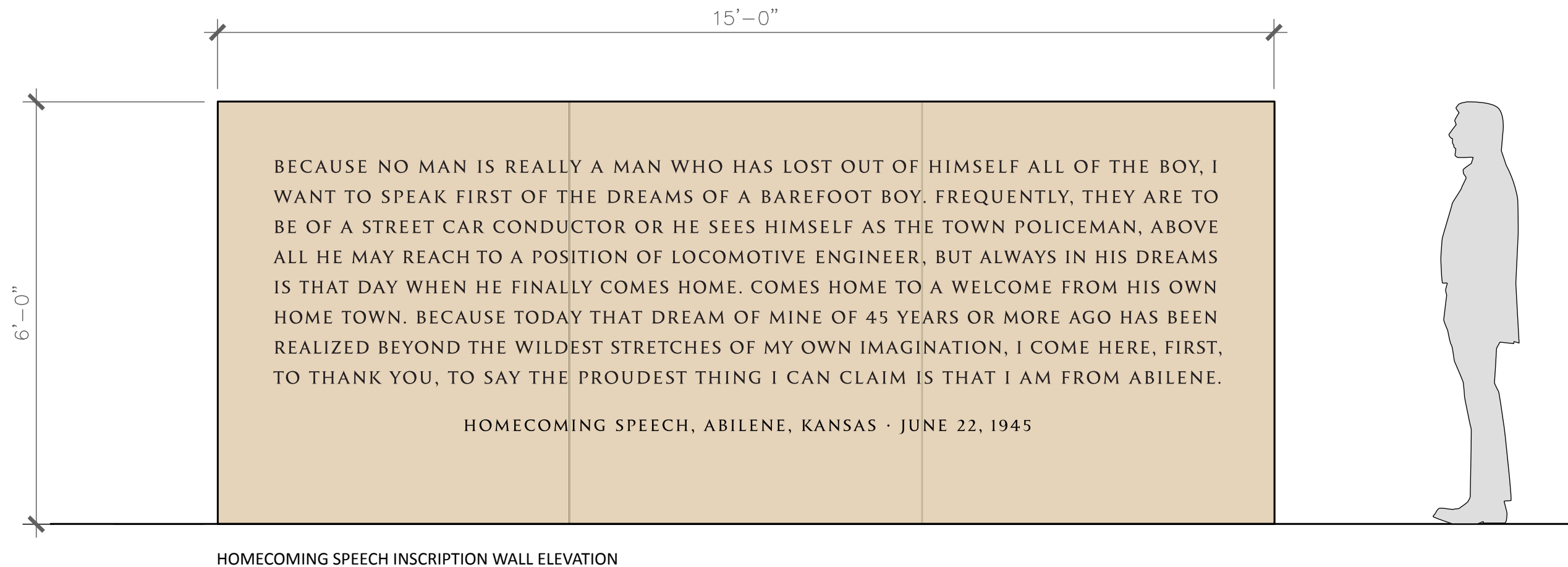
EISENHOWER AS A YOUNG MAN SCULPTURE MAQUETTE  
BY SERGEY EYLANBEKOV





NORTHWEST ENTRY PLAZA LOOKING SOUTH AT HOMECOMING INSCRIPTION WALL AND SCULPTURE OF YOUNG EISENHOWER





### HOMECOMING SPEECH INSCRIPTION WALL

On a stone wall near the statue of Young Eisenhower will be an excerpt from the Abilene Homecoming Speech given in Abilene, Kansas on June 22, 1945.

*Historical Context:* Following the surrender of Nazi Germany, General Eisenhower embarked on a victory parade tour celebrating the Allied victory in Europe. After stops in Paris, London, New York, West Point, Washington, and Kansas City, Eisenhower returned to his hometown of Abilene, Kansas, via the same train tracks that had taken him eastward to West Point thirty-four years

prior. On June 22, 1945, in Abilene’s City Park—which had been newly named Eisenhower Park—Eisenhower delivered his Homecoming Speech to the largest crowd Abilene had ever known, in which he modestly acknowledged the admiration of proud fellow Abileners, while asserting that in his eyes he was merely “the symbol of heroic men you people and all the United States have sent to war” and not a hero. Reflecting on the fateful events that had brought him to this moment, he contemplated the impact of his small town upbringing noting, “never has this town

been outside my heart and memory.” Despite having planned and led the greatest amphibious military assault in history leading to the liberation of Western Europe, for Eisenhower the proudest thing he could claim was that he was from Abilene. Eisenhower displayed his genuine emotions in his deliverance of this speech, illustrating his profound astonishment at the level of enthusiasm with which he was greeted while simultaneously expressing his respect for the circumstances that had led to this momentous occasion.





### LANDSCAPE DESIGN UPDATE

In February and May, the team proposed the removal of four trees adjacent to the Memorial core in order to increase views to the tapestry. The tree removal has been reconsidered, and is no longer being proposed. The current design proposes a species change at the memorial core center tree from a London Plane to a Bur Oak to give the central grove of trees a stronger character and presence. Additionally, an existing street tree originally proposed to remain on Sixth Street, SW, is being replaced with a Swamp White Oak in the current design to match the other proposed street trees along the west edge of the memorial. The existing tree is being removed from the project due to the poor health of the tree.

#### KEY:



Red Oak  
*Quercus rubra*



Swamp White Oak  
*Quercus bicolor*



Shingle Oak  
*Quercus imbricaria*



London Plane  
*Platanus x acerfolia*



Bur Oak  
*Quercus macrocarpa*



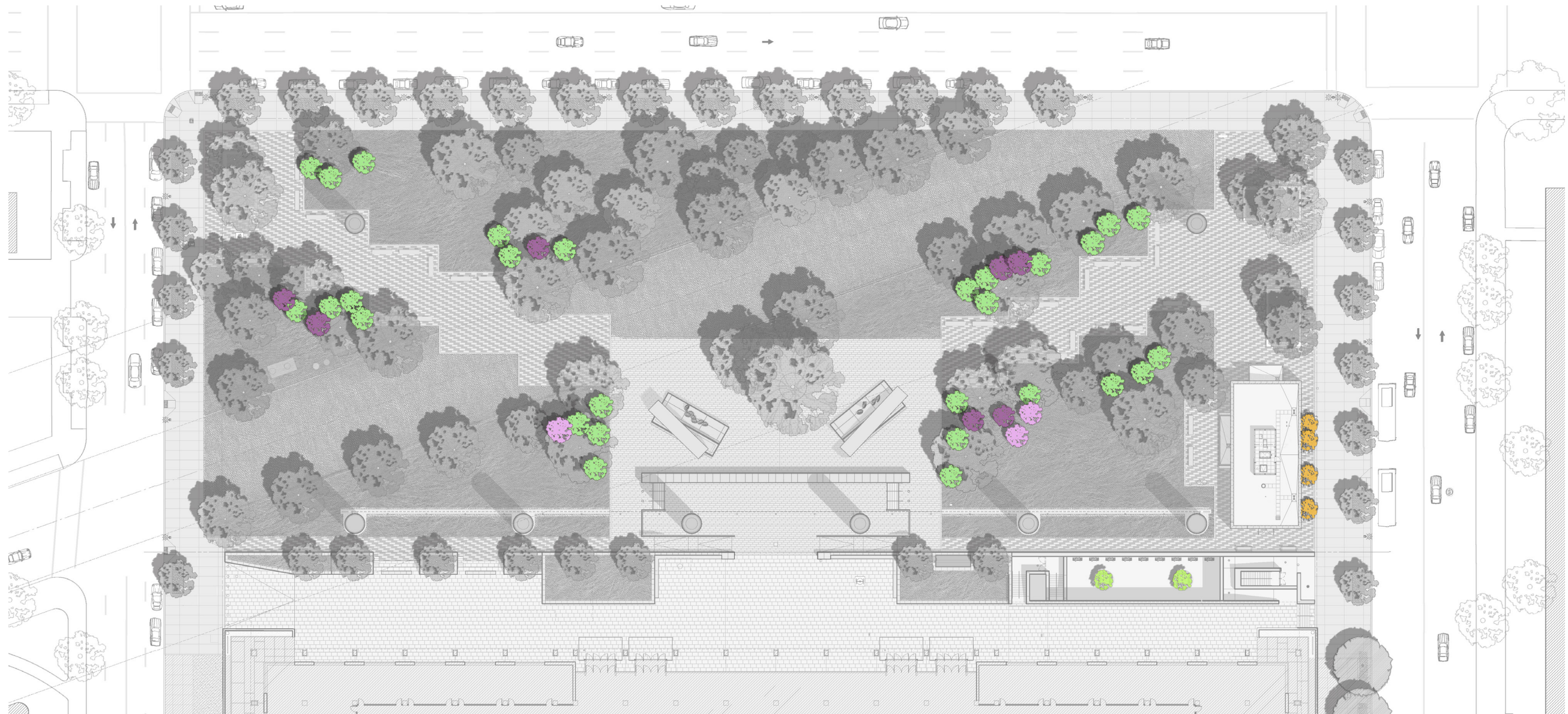
Hackberry  
*Celtis occidentalis*



River Birch  
*Betula nigra*

### 3.0 - LANDSCAPE DESIGN UPDATE





UNDERSTORY TREE PLAN



MEMORIAL PRECINCT



Flowering Dogwood  
*Cornus florida CV*



Ironwood  
*Carpinus caroliniana*



Eastern Redbud  
*Cercis canadensis*

VISITOR CENTER



American Hophornbeam  
*Ostrya virginiana*

LBJ SUNKEN COURTYARD



Nellie Stevens Holly  
*Ilex Nellie Stevens*