



United States Department of the Interior

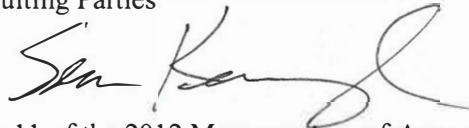
NATIONAL PARK SERVICE
National Mall and Memorial Parks
900 Ohio Drive, S.W.
Washington, D.C. 20024-2000



September 7, 2017

Memorandum

To: Signatories, Invited Signatories and Consulting Parties

From: Sean Kennealy, Acting Superintendent 

Subject: Final Determination of Effect, Stipulation 11 of the 2012 Memorandum of Agreement (Updated since May 8, 2015)

In accordance with Stipulation 11 of the 2012 Memorandum of Agreement (MOA) among the National Park Service (NPS), the Eisenhower Memorial Commission (EMC), the National Capital Planning Commission (NCPC), the Advisory Council on Historic Preservation, and the District of Columbia State Historic Preservation Officer (DC SHPO), the purpose of this letter is to record our final determination of effect for the establishment of the Dwight D. Eisenhower Memorial based on the most recent design changes proposed by the EMC. The NPS previously issued its final determination of effect on May 8, 2015. At that time, the NPS concluded that the design refinements accomplished between 2012 and 2015 minimized the adverse effects on historic properties identified in the 2012 MOA. The proposed site is located at Maryland and Independence Avenues between 4th and 6th Streets, on a four-acre site in Southwest Washington, DC.

Since receiving final design approvals from the Commission of Fine Arts (CFA) on June 18, 2015 and the National Capital Planning Commission (NCPC) on July 9, 2015, EMC proposes the following changes to the memorial plans based on consultation with the Eisenhower family and input from the CFA on May, 18, 2017:

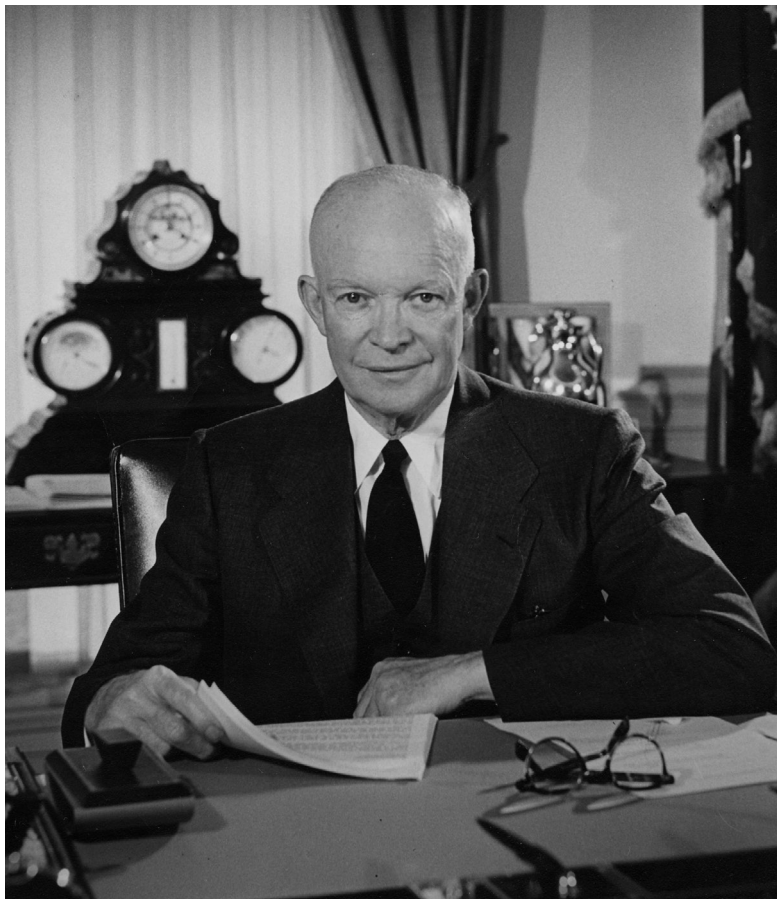
1. Revising the artistic image on the tapestry, and the symbolic context of the story of Eisenhower from a landscape scene of Abilene, Kansas, Eisenhower's hometown, to a contemporary view of the Normandy beaches, where the D-Day landing occurred under Eisenhower's command during World War II.
2. Relocating the statue of young Eisenhower from the Memorial Overlook to the corner of the site at 6th Street and Independence Avenue, NW. The statue is seated on a single pedestal.
3. Adding a small plinth with an inscription a few feet to the south of the statue of young Eisenhower.

At the January 2017 CFA and February 2017 NCPC meetings, the commissions reviewed and largely approved the overall revised concept design. However, both commissions requested additional visual studies and a mock-up of the revised tapestry image. In recent months, EMC has provided additional documentation on the tapestry image including a mock-up that was presented on May 18, 2017 at the National Building Museum. A more expansive mock-up was subsequently requested by both the CFA and the DC SHPO. Based on the analysis of this information and the previously submitted documentation, the

NPS still believes that these changes will not result in new adverse effects or intensify the previously identified adverse effects to historic properties.

Based on images and the assumption that the tapestry will be as transparent as the previously approved design of the Kansas Landscape, as well as an anticipated final viewing of the larger mock-up on September 20, the NPS seeks your concurrence with our final determination of effect. In accordance with the MOA, this determination and the initial final design documentation will be posted on the NPS Planning, Environment & Public Comment (PEPC) website for a 14-day review and comment period, ending September 22, 2017. We look forward to continuing to work with you as we prepare to submit the plans for final approval for the September 2017 CFA meeting and October 2017 NCPC meeting.

If you have any questions, please do not hesitate to contact Catherine Dewey, Chief of Resource Management, at (202) 245-4711 or Catherine_dewey@nps.gov.



EISENHOWER MEMORIAL

NATIONAL CAPITAL PLANNING COMMISSION

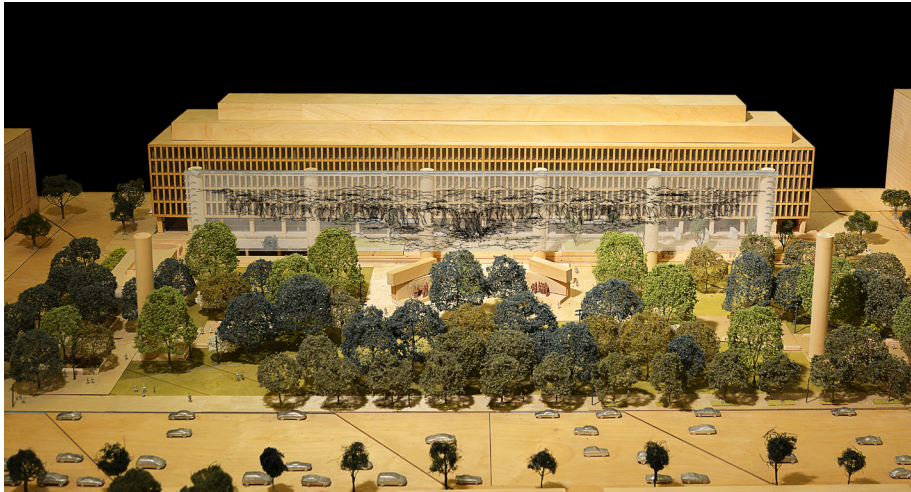
REVISED PRELIMINARY AND FINAL DESIGN SUBMISSION

SUBMISSION DATE: SEPTEMBER 1, 2017

MEETING DATE: OCTOBER 5, 2017

TABLE OF CONTENTS

- 1.0 DESIGN REVISION SUMMARY
- 2.0 COMMEMORATIVE ART UPDATE
- 3.0 LANDSCAPE DESIGN UPDATE
- 4.0 LIGHTING DESIGN UPDATE



CURRENT DESIGN

DESIGN REVISIONS SUMMARY

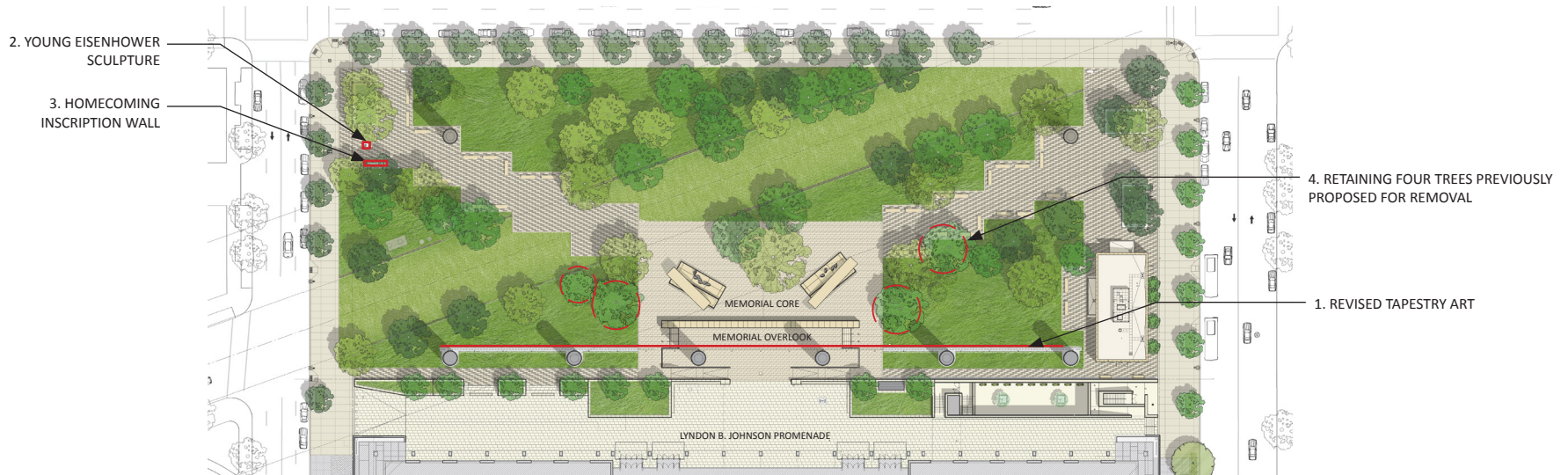
In February 2017, a revised design of the Eisenhower Memorial project was presented to the Commission. The design changes included a new thematic context for the Memorial, revised art on the tapestry, relocating the Young Eisenhower sculpture and removing four trees from the landscape design. The National Capital Planning Commission found the revised design was not significantly changed since the final approval of 2015, including the stainless steel tapestry and the supporting colonnade, freestanding columns, memorial core, landscaping and the information center. Additionally, the revised memorial design concept was found to continue to satisfy the site selection design principles adopted by the Commission in September 2006.

In response to agency comments, the design team presented a refined design to the Commission of Fine Arts in May. The design updates included a new proposal for the Young Eisenhower statue on the Overlook and a three panel tapestry mockup with the revised art. CFA recommended the design team reconsider the removal of the four trees from the project, and explore other locations for the statue of Eisenhower as a young man within the park now that this figure is no longer central to the contextual framework of the memorial. Additionally, they advised the team to continue to refine the fabrication methods and tapestry art to improve the legibility of the image.

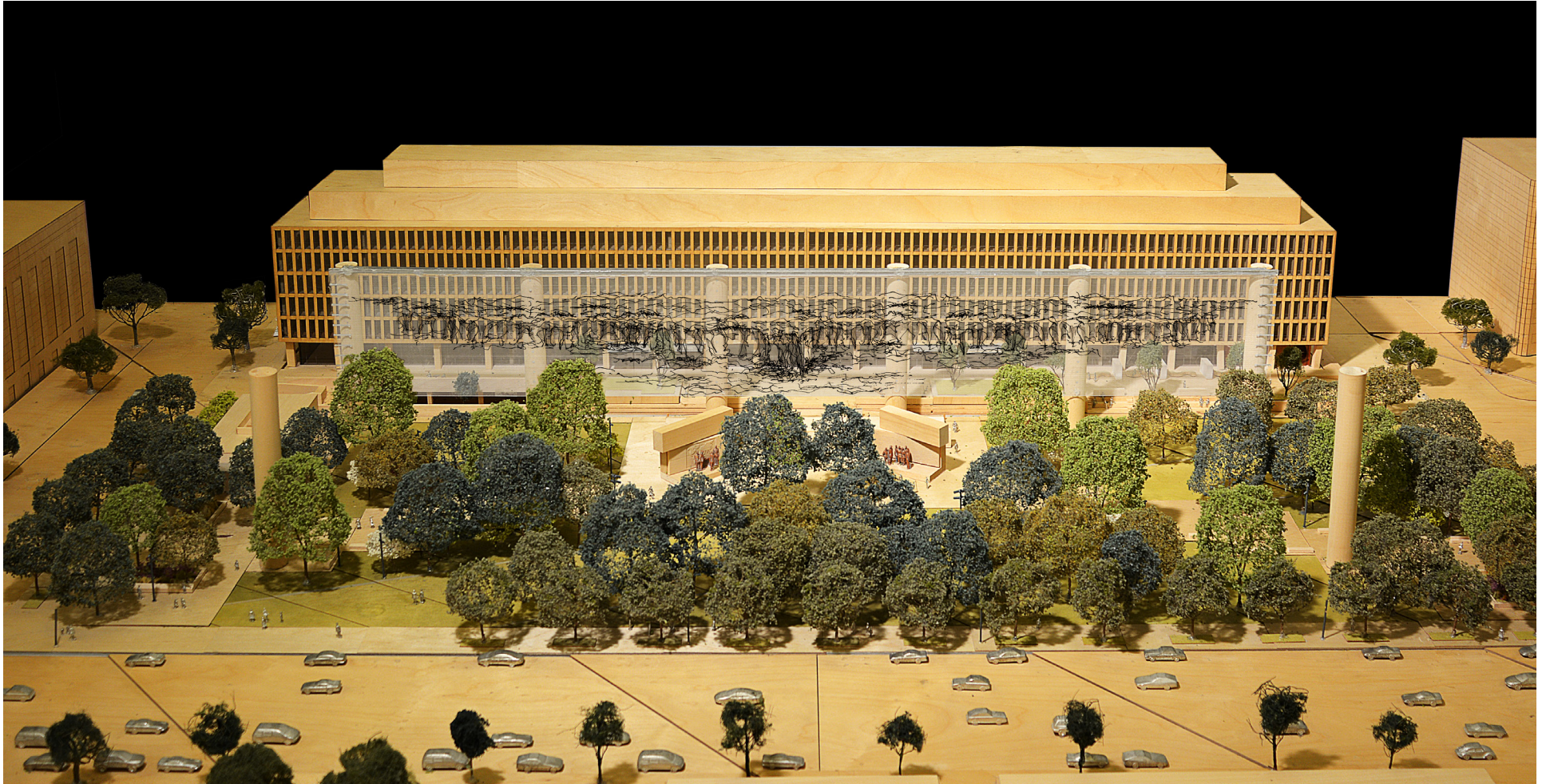
The current design update includes:

1. Revised Tapestry Art
2. New location for Young Eisenhower Sculpture
3. New Inscription wall with Abilene Homecoming Speech
4. Retaining four added trees previously proposed for removal.

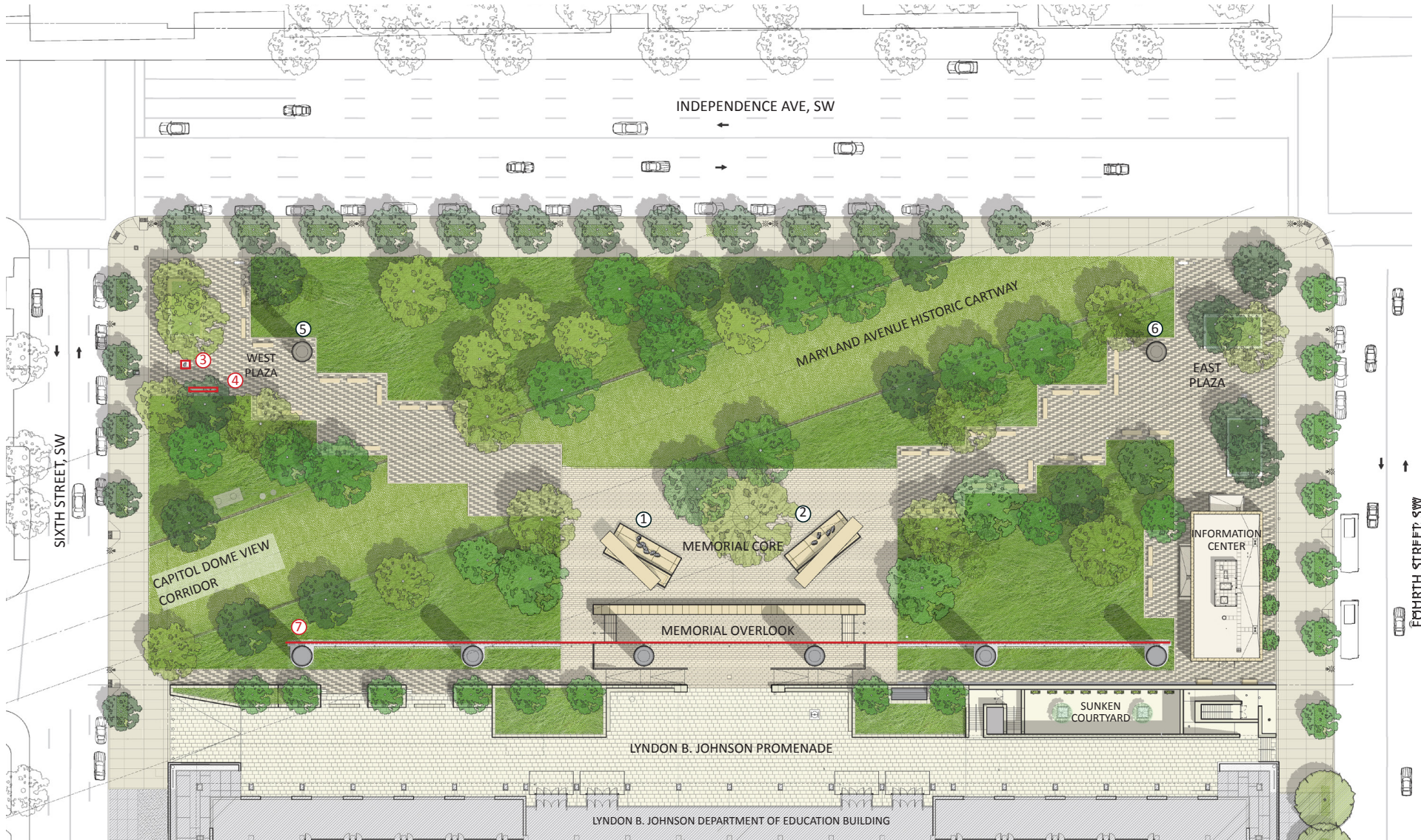
This submission addresses the NCPC request for a new mock-up, additional visual studies of the tapestry, and the revised lighting design for final design approval.



CURRENT DESIGN



AERIAL VIEW OF THE MEMORIAL WITH THE REVISED TAPESTRY IMAGE



- ① GENERAL EISENHOWER MEMORIAL ELEMENT
- ② PRESIDENT EISENHOWER MEMORIAL ELEMENT
- ③ YOUNG EISENHOWER STATUE
- ④ HOMECOMING SPEECH
- ⑤ GENERAL EISENHOWER COLUMN
- ⑥ PRESIDENT EISENHOWER COLUMN
- ⑦ SOUTH TAPESTRY



MEMORIAL TAPESTRY

The tapestry and colonnade are unique methods of memorialization presented for the Eisenhower Memorial. The tapestry serves as a commemorative memorial element as well as an urban site planning element, to create both a physical and symbolic context for Dwight D. Eisenhower. The stainless steel tapestry, positioned at the southern perimeter of the site, frames the urban park.

In September of 2011, a full scale proof of concept mock-up for three panels of the tapestry were displayed in front of the Department of Education building. Following this initial mock-up, the design team further developed the CNC welding fabrication system, the panel engineering and environmental material testing. The NCPC Commission found the tapestry fabrication met the Commemorative Works Act durability criteria.

In February 2016, the NCPC Commission and CFA endorsed a revised thematic context for the story of Eisenhower planned for the Memorial and new tapestry art depicting an aerial scene of the Normandy landscape and coastline. Both Commissions requested a new tapestry

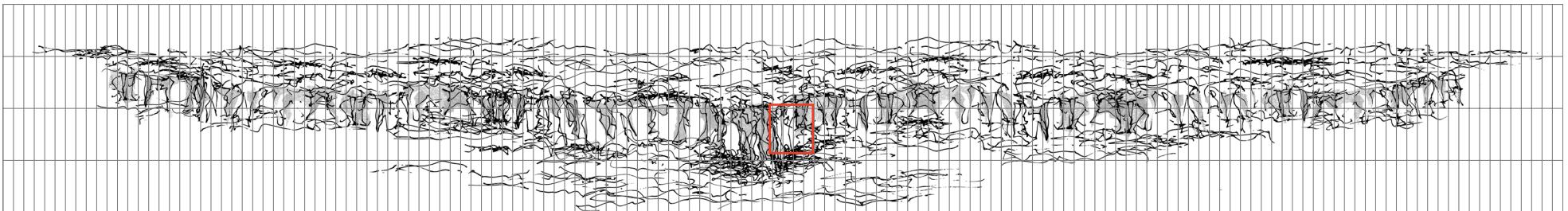
mock-up to understand how the revised tapestry art impacts the Department of Education Headquarters and other surrounding buildings. In May, the Commission of Fine Arts reviewed a tapestry mockup with the Normandy design. CFA recommended the team continue to refine the image and the fabrication method of the tapestry to improve the image clarity.

After further study and review of the previous tapestry mockups, the team concluded that a graphic approach to the Normandy landscape art with higher contrast would be more successful for improving image clarity against the backdrop of the Lyndon B. Johnson building. The revised design is an artistic drawing of the cliffs of Normandy coastline that will increase legibility and the transparency of the overall tapestry.

A new tapestry mock-up of the current art will be on display in front of the Lyndon B. Johnson Department of Education on the day of the NCPC Commission meeting for review.

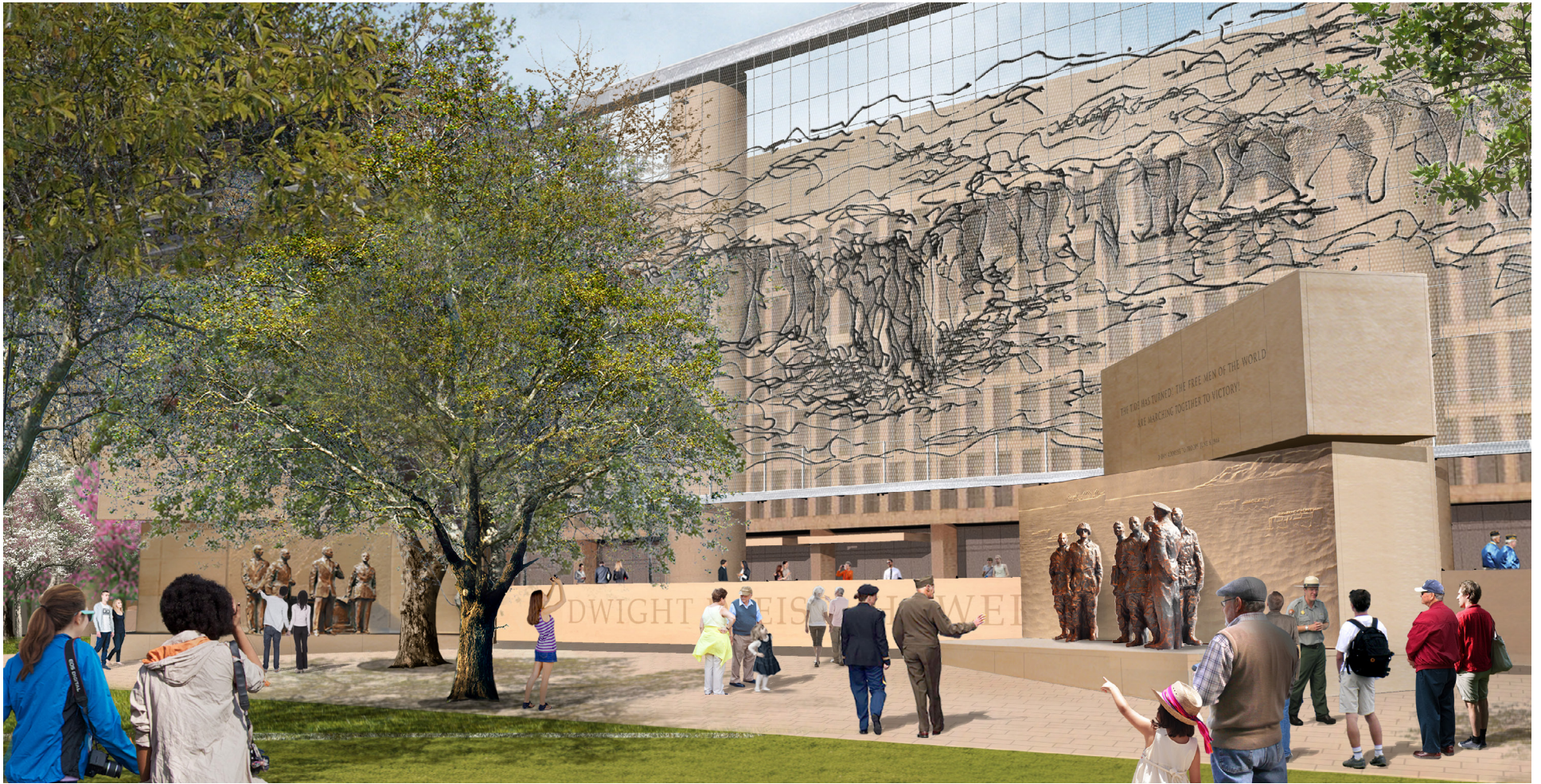


PROPOSED ART FOR THE TAPESTRY



PROPOSED ART FOR THE TAPESTRY WITH PANELS SHOWING MOCKUP LOCATION

2.0 - COMMEMORATIVE ART UPDATE



VIEW OF TAPESTRY FROM CENTER OF MEMORIAL CORE

The expansive tapestry with the Normandy cliff is a prominent feature at the center of the memorial. The iconic Point du Hoc landmark on the coastline is the center of the composition flanked by the Presidential and General Memorial sculptural figures. This arrangement invites visitors to learn about Normandy and the location of one of Eisenhower's greatest achievements. Normandy symbolically remains a powerful reminder of the sacrifices of D-Day and how this pivotal event lead to peace and shaped our nation's history in the years that followed. The artistic image symbolically represents the peace

Eisenhower won as Supreme Allied Commander and the peace he kept and nurtured as the 34th President during a unique time when the United States emerged on to the global stage. The tapestry backdrop frames the context of Eisenhower's service to the country and his enduring legacy as a key figure in the 20th century.

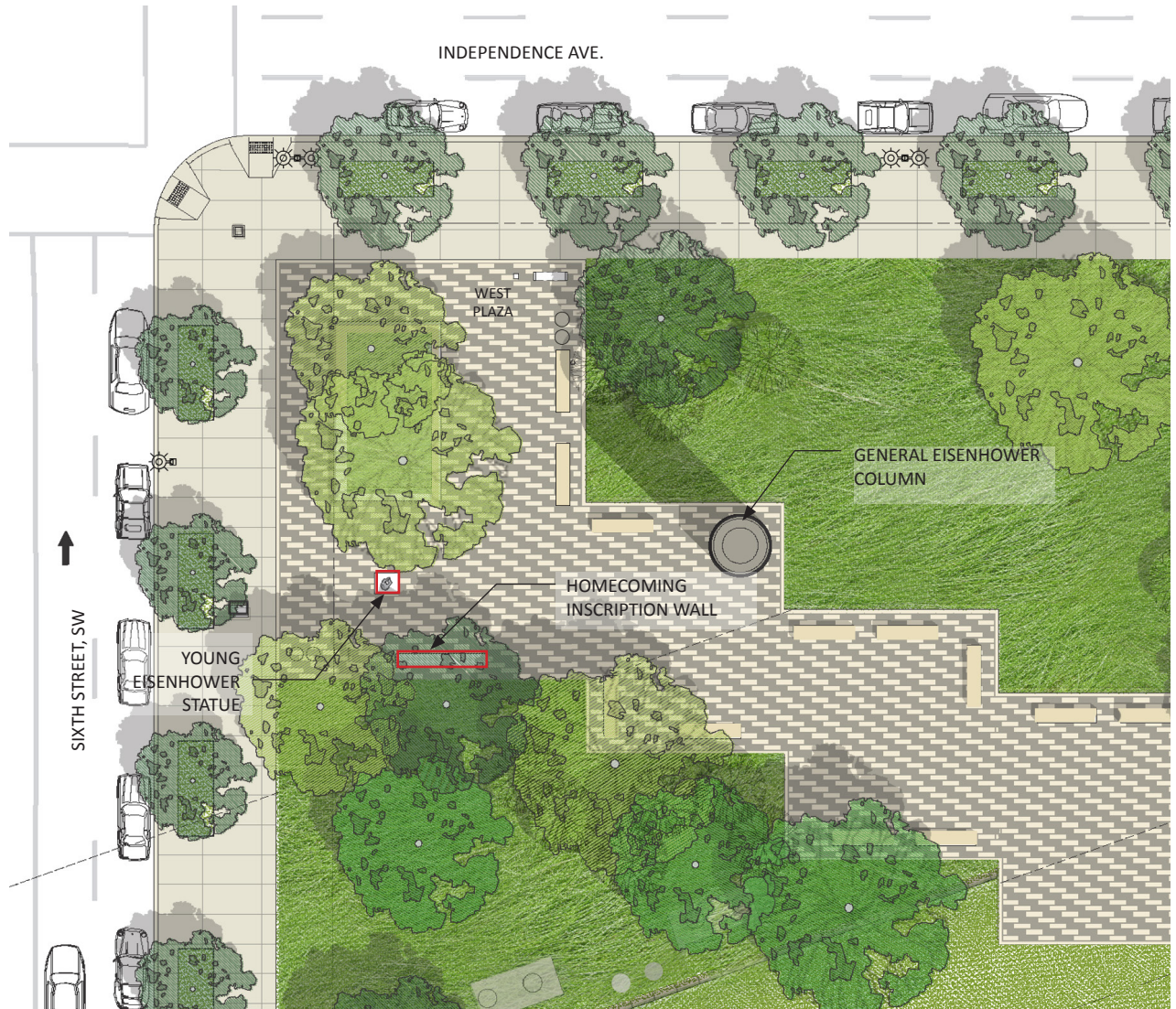
YOUNG EISENHOWER SCULPTURE

The statue of Eisenhower as a young man has been repositioned and refined in response to the CFA and NCPC Commission comments.

The statue is now located at the Northwest plaza entrance into the Memorial. The artist has refined the sculpture pose, with the figure seated on a podium. Adjacent to the statue, on the south edge of the plaza, is an inscription wall with an excerpt from the Homecoming speech that Eisenhower gave upon his return to Abilene in 1945. In this speech, Eisenhower's references his strong connection with his hometown of Abilene, Kansas.

The sculpture showing the Kansas youth and the Abilene Homecoming inscription encourages visitors entering the Memorial to connect with Eisenhower's personal story as an American story.

Several other locations for the Young Eisenhower statue were considered, including a central location on the Overlook and an option near the entry to the LBJ Department of Education. This location balances the eastern side of the site with the Information Building.





EISENHOWER AS A YOUNG MAN MAQUETTE DETAIL
BY SERGEY EYLANBEKOV

YOUNG EISENHOWER STATUE

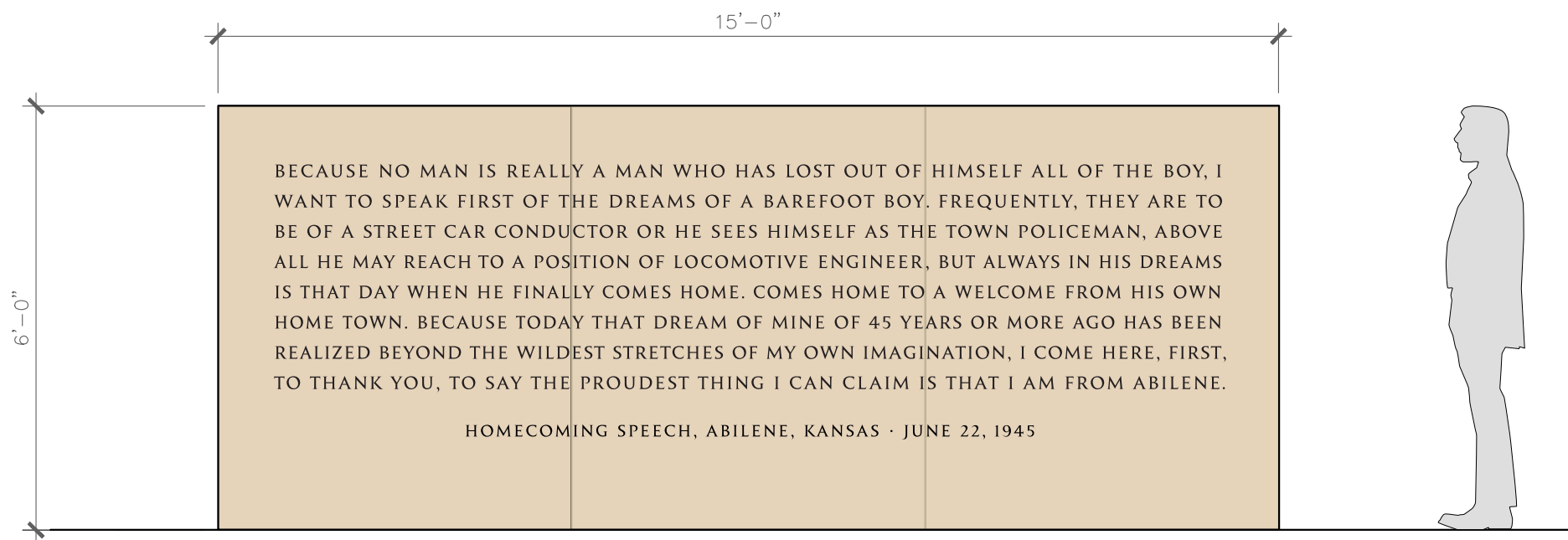
The pose of Young Eisenhower has been refined by the sculptor. The maquette shows the figure seated on a limestone pedestal that is 30" high. The figure looks toward the Memorial. The youthful Eisenhower offers a counter point to the General and Presidential portrait figures depicting more serious moments in Eisenhower's life.



EISENHOWER AS A YOUNG MAN SCULPTURE MAQUETTE
BY SERGEY EYLANBEKOV



NORTHWEST ENTRY PLAZA LOOKING SOUTH AT HOMECOMING INSCRIPTION WALL AND SCULPTURE OF YOUNG EISENHOWER



HOMECOMING SPEECH INSCRIPTION WALL ELEVATION

HOMECOMING SPEECH INSCRIPTION WALL

On a stone wall near the statue of Young Eisenhower will be an excerpt from the Abilene Homecoming Speech given in Abilene, Kansas on June 22, 1945.

Historical Context: Following the surrender of Nazi Germany, General Eisenhower embarked on a victory parade tour celebrating the Allied victory in Europe. After stops in Paris, London, New York, West Point, Washington, and Kansas City, Eisenhower returned to his hometown of Abilene, Kansas, via the same train tracks that had taken him eastward to West

Point thirty-four years prior. On June 22, 1945, in Abilene's City Park—which had been newly named Eisenhower Park—Eisenhower delivered his Homecoming Speech to the largest crowd Abilene had ever known, in which he modestly acknowledged the admiration of proud fellow Abileners, while asserting that in his eyes he was merely “the symbol of heroic men you people and all the United States have sent to war” and not a hero. Reflecting on the fateful events that had brought him to this moment, he contemplated the impact of his small town upbringing noting, “never has this town been outside

my heart and memory.” Despite having planned and led the greatest amphibious military assault in history leading to the liberation of Western Europe, for Eisenhower the proudest thing he could claim was that he was from Abilene. Eisenhower displayed his genuine emotions in his deliverance of this speech, illustrating his profound astonishment at the level of enthusiasm with which he was greeted while simultaneously expressing his respect for the circumstances that had led to this momentous occasion.

3.0 LANDSCAPE DESIGN UPDATE

The landscape planting plan has returned to the previously approved 2015 design. In February 2017, the team proposed the removal of four trees adjacent to the Memorial core to increase views to the tapestry. The tree removal has been reconsidered, and is no longer being proposed. The current design proposes a species revision at the memorial core center tree from a London Plane to a Bur Oak to give the central grove of trees a stronger character and presence. Additionally, an existing street tree originally proposed to remain on Sixth Street, SW, is being replaced with a Swamp White Oak in the current design to match the other proposed street trees along the west edge of the memorial. The existing tree is being removed from the project due to the poor health of the tree.



CANOPY TREE PLAN

() CANOPY TREES ADDED BACK TO DESIGN

() TREE SPECIES REVISED



KEY:



Red Oak
Quercus rubra



Swamp White Oak
Quercus bicolor



Shingle Oak
Quercus imbricaria



London Plane
Platanus x acerfolia



Bur Oak
Quercus macrocarpa



Hackberry
Celtis occidentalis

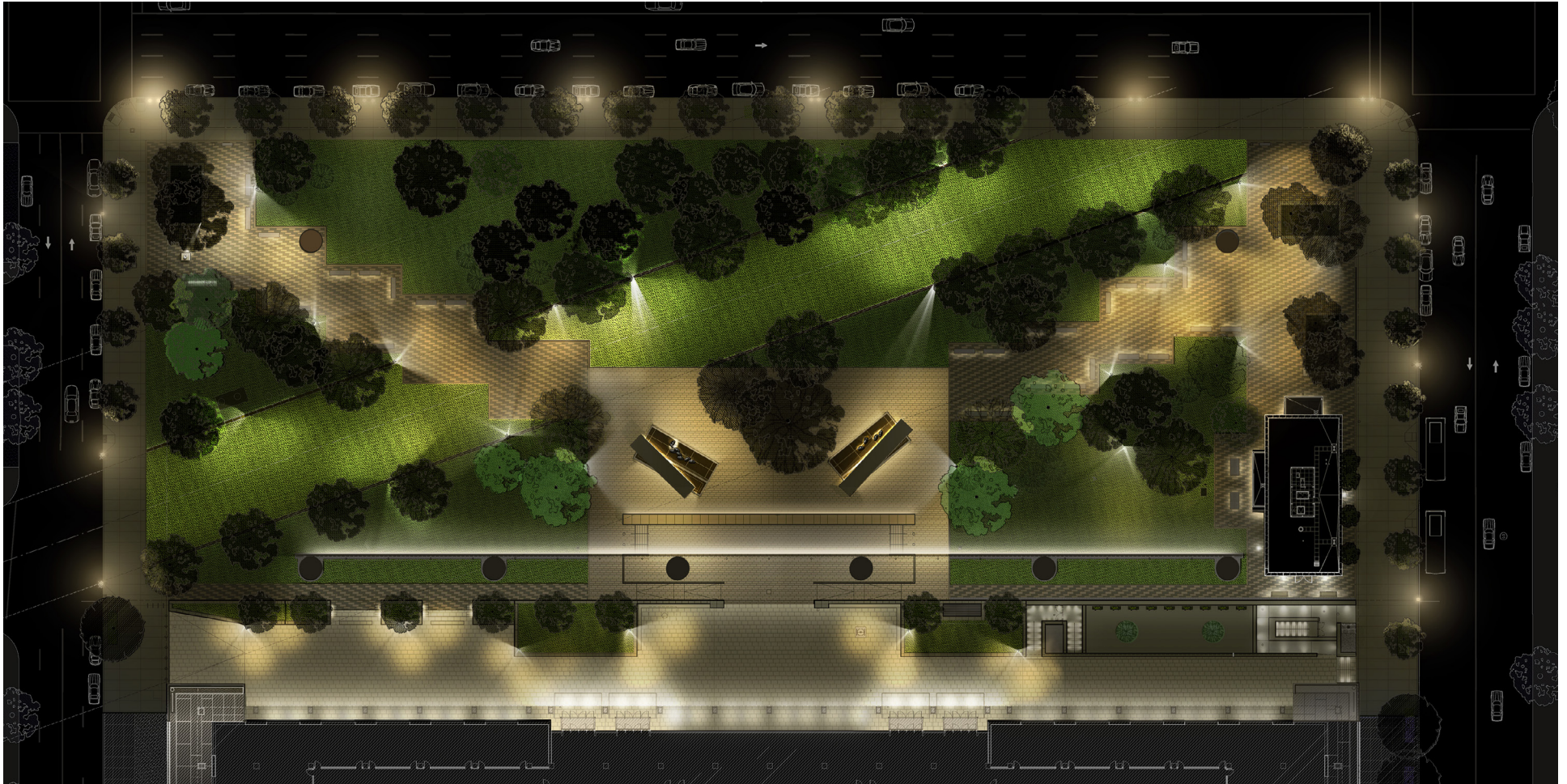


River Birch
Betula nigra

EISENHOWER MEMORIAL

Gehry Partners • AECOM Joint Venture

LANDSCAPE DESIGN UPDATE- 3.0

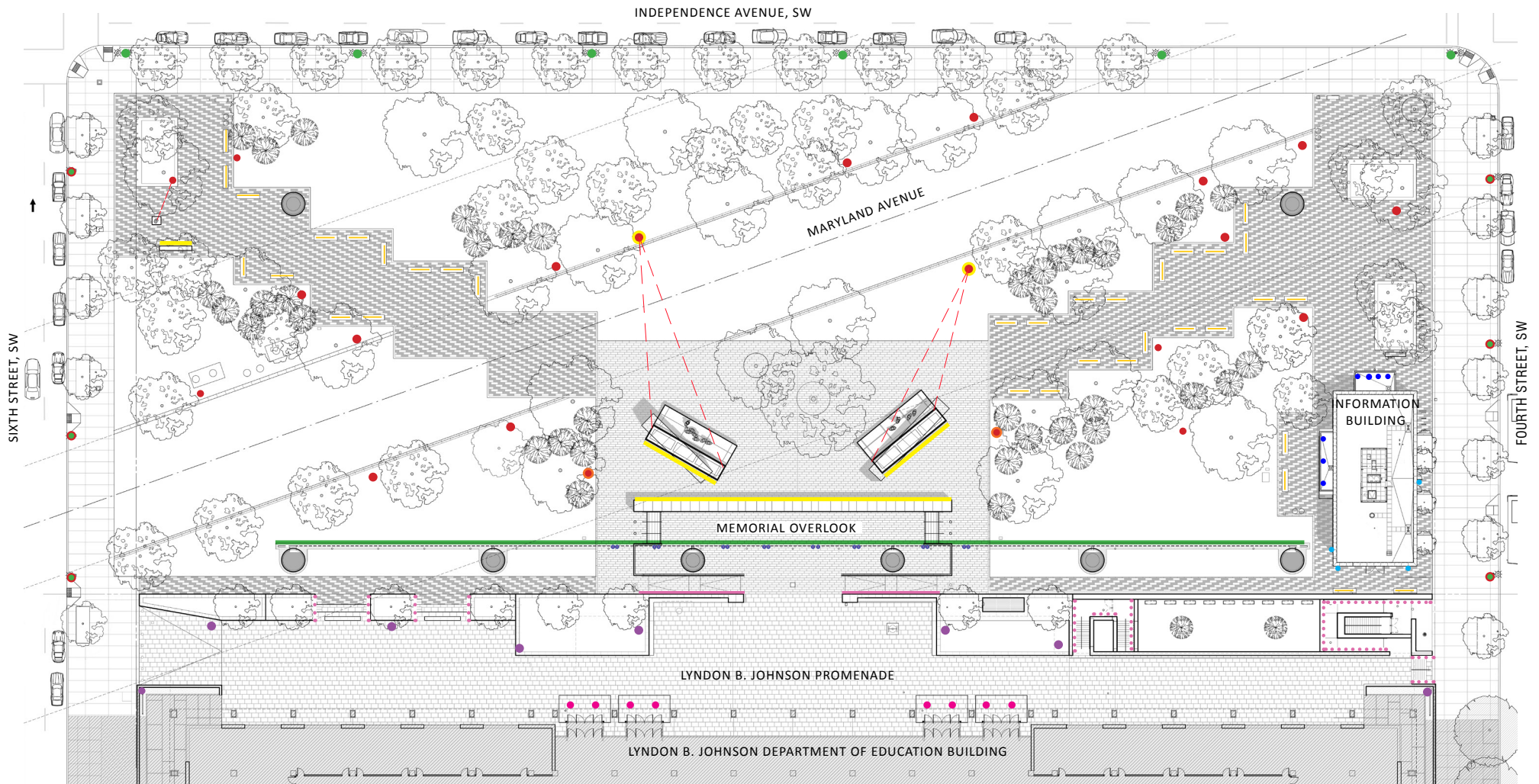


CURRENT RENDERED LIGHTING PLAN

CURRENT DESIGN

The lighting plan is the same as the previously approved design with the addition of lighting for the sculpture of Eisenhower as a young man and the new inscription wall at the Northwest Entry Plaza.

4.0 - LIGHTING DESIGN UPDATE



UPDATED LIGHTING KEY PLAN

- 14' APPROACHING WALKWAY POLE WITH DOWNLIGHTS
- 30' MEMORIAL CORE ART LIGHTING POLE WITH FRAMING PROJECTORS
- 30' MEMORIAL CORE LIGHTING POLE WITH DOWNLIGHTS
- 14' LBJ PROMENADE POLE WITH DOWNLIGHTS
- STREET LIGHTING TWIN POLE
- STREET LIGHTING SINGLE HEAD POLE
- SUPPORT BUILDING EXTERIOR CANOPY DOWNLIGHTING
- SUPPORT BUILDING EXTERIOR WALL SCONCES
- MEMORIAL OVERLOOK DOWNLIGHTING
- LBJ BUILDING CANOPY DOWNLIGHTING
- FRAMING PROJECTOR
- BENCH LIGHTING
- MEMORIAL BLOCK TRENCH LIGHTING
- TAPESTRY UPLIGHTING
- RAMP RAIL LIGHTING
- STEP LIGHTING



NIGHT VIEW OF MARYLAND AVENUE VIEWSHED TOWARDS CAPITOL

The lighting concept allows the visual progression of Maryland Avenue axis through the site. This corridor will allow for a view to the Capitol to remain unimpeded from issues such as glare or lighting of too large a scale. Keeping the light sources close to the ground at the pedestrian level allows the eye to explore beyond the site to surrounding areas, and on to the Capitol itself.

In this particular view, the tapestry on the right side is dark above the tree canopy due to the fact that the light source is uplighting the tapestry from below and fades intentionally as it reaches the top of the tapestry and because the light source illuminates only the north side of the tapestry from this view. The south side of the tapestry will be less bright as illustrated in the view.

4.0 - LIGHTING DESIGN UPDATE



VIEW ALONG MARYLAND AVENUE LOOKING TOWARDS THE CAPITOL

As one moves within the site along the Maryland Avenue axis, the layering of light begins to be recognized fully. Although the Maryland Avenue view to the Capitol remains distinct, the green space that defines our site is illuminated differently from a typical avenue or street. As a nod to the fact that the axis continues through the site; we light it. However, the light is directed downward to the natural greensward surface. Instead

of ambient street poles that would otherwise distract the view upward to the Capitol, the lighting within the site quietly falls on the ground, with glare from the light fixtures kept to a minimum.



NIGHT VIEW OF THE MEMORIAL CORE

COMMEMORATIVE ART LIGHTING

At the Memorial elements at the core of the site, the lighting is continuous and densely layered. Linear uplighting helps to define each element, but in different ways. The linear uplighting of the tapestry floating above provides the backdrop for the entire site and fades as it reaches the top of the tapestry surface blending into the night sky above. Another continuous uplight subtly illuminates the Eisenhower inscription walls.

This uplight is of a human scale, and helps to ground the area immediately underneath the tapestry as a part of the Memorial core's glowing center. The Memorial elements on the right and left utilize a soft glow of light to bring out the subtle textures of the bas relief walls and to reinforce the silhouette of the statues standing in front of the reliefs.

The final layer of lighting in this view are for the statues themselves. The sculptures are illuminated specifically from the front, with the light focused on the figures and nothing else.

4.0 - LIGHTING DESIGN UPDATE



HOMEcoming SPEECH INSCRIPTION WALL AND THE FIGURE OF EISENHOWER AS A YOUNG MAN LOOKING SOUTH

YOUNG EISENHOWER LIGHTING

The sculpture of Eisenhower as a youth is proposed to be illuminated with a single projector designed focus on the statue. The Homecoming Speech inscription wall will have linear uplighting at the base of the wall similar to the Memorial core inscription walls.