



Executive Director's Recommendation

Commission Meeting: July 13, 2017

PROJECT President Franklin D. Roosevelt Prayer Plaque World War II Memorial The National Mall Washington, DC	NCPC FILE NUMBER 7727
SUBMITTED BY United States Department of the Interior National Park Service	NCPC MAP FILE NUMBER 00.00(73.10)44572
REVIEW AUTHORITY Federal Projects in the District per 40 U.S.C. § 8905 and Public Law 113-123	APPLICANT'S REQUEST Approval of comments on concept design
	PROPOSED ACTION Approve comments on concept design
	ACTION ITEM TYPE Staff Presentation

PROJECT SUMMARY

Public Law 113-123 authorizes the placement of a plaque or inscription with the words that President Franklin D. Roosevelt prayed on D-Day in the vicinity of the World War II Memorial, in accordance with the Commemorative Works Act (40 U.S.C. 8905 et seq.) (CWA). The CWA defines approval requirements related to the location, design, and construction of commemorative works in the District of Columbia and its environs. The National Capital Planning Commission (NCPC) and the U.S. Commission of Fine Arts (CFA) approve site and design for new commemorative works.

The National Park Service (NPS), on behalf of the Friends of the World War II Memorial, submitted to NCPC the FDR D-Day Prayer Schematic Design, which includes criteria for developing the design and two design concept alternatives within the Circle of Remembrance. The two design alternatives include:

- Alternative A: Free-Standing Symmetrical Plaque
- Alternative B: Integrated Asymmetrical Plaque

In December 2016, the Commission provided comments on the refined plaque location within the Circle of Remembrance, supporting a plaque location that completes the geometric form of the circle while incorporating the plaque as a free-standing element, separated from the circular wall enclosure by two pedestrian pathways. In November 2015, the Commission provided comments identifying the Circle of Remembrance as a preferred site location for the FDR Prayer Plaque. Now, the Commission is providing comments on the concept design of the plaque and improvements to the Circle of Remembrance.

Based on the approximate 500-word length (over 2,000 characters) of the FDR prayer and necessary size for legibility (3/8" tall letters), the plaque has a proposed surface area of approximately 40 to 50 square feet. The Friends of the World War II Memorial contracted with Oehme van Sweden, the landscape architects for the World War II Memorial, for the plaque site location and design.

KEY INFORMATION

- The CWA establishes requirements for building commemorative works on federal lands within the District of Columbia and its environs. It applies to lands under jurisdiction of the U.S. Department of the Interior (DOI) and the U.S. General Services Administration (GSA). This site is under the jurisdiction of DOI and is managed by the National Park Service (NPS).
- In general, in accordance with the CWA, the key benchmarks for authorizing a new memorial are summarized below:
 - (1) Congress authorizes each new memorial purpose (subject) and a memorial sponsor by separate federal law.
 - P.L. 113-123 directs the Secretary of the Interior to install a plaque or inscription of FDR's prayer in the area of the World War II Memorial.
 - (2) The sponsor consults with the National Capital Memorial Advisory Commission (NCMAC) on alternative sites and design concepts.
 - NCMAC commented favorably on Site A at its September 14, 2015 meeting.
 - (3) CFA, NCPC, and NPS must approve the site and design for new commemorative works.
 - The FDR D-Day Prayer Schematic Design, which is the subject of this EDR, is the next step towards these approvals.
 - CFA commented favorably on the Alternative B design concept, subject to future review, at its June 15, 2017 meeting.
 - NCPC commented favorably on the Alternative II refined plaque location, on December 1, 2016.
 - CFA commented favorably on the Alternative II refined plaque location, subject to future design review, at its November 17, 2016 meeting.
 - NCPC commented favorably on Site A (Circle of Remembrance) on November 5, 2015.
 - CFA commented favorably on Site A, subject to the review of the plaque design, at its October 15, 2015 meeting.

- (4) CFA, NCPC, and NPS must approve and permit the final site and design for each new memorial, after the steps above are completed. NPS is responsible for the long-term maintenance and interpretation of memorials.
- The two design Alternatives, A and B, propose changing the existing material of the Circle of Remembrance to be more consistent with the primary memorial precinct. The flagstone retaining wall, wood and metal park benches, and concrete paving would be replaced by granite retaining walls, benches, and paving.
 - Alternative A proposes the plaque as a free-standing element between the two entry pathways. This symmetrical Alternative is inspired by the WWII Memorial, and provides seating capacity for 33 people (including four wheelchairs), and standing capacity for 205 people. The 24-inch tall landscape wall is punctuated with gaps, which allow views to the landscape and spaces for accessible seating.
 - Alternative B proposes the plaque as an element integrated with the benches and retaining wall encircling the Circle of Remembrance, framing a single entry pathway. This asymmetrical Alternative is inspired by landscape elements, and provides seating capacity for 25 people (including two wheelchairs), and standing capacity for 196 people. The solid, sloped landscape wall transitions from 18-inches to 36-inches in height.
 - In addition to the CWA site location criteria, the NPS, on behalf of the Friends of the WWII Memorial, developed additional site location and design criteria for the project submission in 2016. These site location criteria highlight locating the prayer plaque in a manner that creates opportunities for quiet contemplation. The design criteria evaluate the aesthetics and visitor experience of the D-Day Prayer.
 - The U.S. Army Corps of Engineers are currently planning changes and improvements to the Potomac Park Levee, which abuts the Circle of Remembrance. The changes to the levee could impact the Circle of Remembrance features and landscape.

RECOMMENDATION

The Commission:

Finds that both Alternatives A and B have positive qualities and could be developed as an appropriate design for the Circle of Remembrance.

Notes that Alternative A is similar to the plaque location and design supported by the Commission in December 2016 because the addition of the free-standing plaque completes the geometric form of the circle.

Notes that Alternative B repositions the Circle of Remembrance, modifies existing circulation patterns, and expresses a different character from the primary WWII Memorial precinct.

Finds that Alternative B has a distinct contemporary design, locates the plaque prominently within the Circle of Remembrance, and preserves views to surrounding sites.

Supports Alternative B provided the applicant address the following issues as the design is further refined:

- Improve universally accessible (ABAAS-compliant) circulation into the Circle of Remembrance and around the plaque, while deterring pedestrian cut-throughs.
- Ensure ample universally accessible seating spaces for the anticipated visitor population.
- Create comfortable standing and sitting spaces for reading the plaque and contemplation, away from the entry/exit space.
- Improve the plaque design to promote text legibility, establish a clear hierarchy of the plaque above bench and wall elements, and discourage unintended uses such as sitting or sleeping.
- Provide porosity within the solid retaining wall to allow views into the surrounding landscape.
- Incorporate low-maintenance vegetation that promotes long-term legibility of the plaque.
- Coordinate the repositioned location of the Circle of Remembrance and landscape planting plans with the Potomac Park Levee Project.

PROJECT REVIEW TIMELINE

Previous actions	December 1, 2016 – Approval of comments on concept design.
	November 5, 2015 – Approval of comments on site selection.
Remaining actions (anticipated)	Approval of design (preliminary and final).

PROJECT ANALYSIS

Executive Summary

NPS, on behalf of the Friends of the World War II Memorial, has submitted the FDR D-Day Prayer Schematic Design. The submission includes two design alternatives for locating the words of President Franklin D. Roosevelt's D-Day Prayer as a plaque near the entry to the Circle of Remembrance.

Alternative A proposes the plaque as a free-standing element between the two entry pathways. This symmetrical Alternative is inspired by the WWII Memorial, and provides seating capacity for 33 people (including four wheelchairs), and standing capacity for 205 people. The 24-inch tall landscape wall is punctuated with gaps with allow views to the landscape and spaces for accessible seating.

Alternative B proposes the plaque as an element integrated with the benches and retaining wall encircling the Circle of Remembrance, framing a single entry pathway. This asymmetrical Alternative is inspired by landscape elements, and provides seating capacity for 25 people (including two wheelchairs), and standing capacity for 196 people. The solid, sloped landscape wall transitions from 18-inches to 36-inches in height.

Staff recommends the Commission approve comments on the selection of Alternative B for the location and design of the President Franklin D. Roosevelt D-Day Prayer.

Analysis

Staff analyzed the design of this project using guidance in the Commemorative Works Act (CWA), the Comprehensive Plan, and in consideration of the applicant's site selection criteria. A general principle set forth in the Comprehensive Plan is to protect and improve the open space character of the National Mall and the integrity of each memorial and park element. Further, the Comprehensive Plan includes policies to enhance the quality of the visitor experience to the Nation's Capital, particularly at major cultural sites, such as the World War II memorial. Therefore, staff's comments on the site selection and design emphasize the importance of successfully integrating the inscription in a manner that is responsive to its surrounding context.

The CWA 40 U.S.C. 8905 includes decision criteria for site and design approval:

- Surroundings – to the maximum extent possible, a commemorative work shall be located in surroundings that are relevant to the subject of the work.
- Location – a commemorative work shall be located so that it does not interfere with or encroach on, an existing commemorative work, and to the maximum extent practicable, it protects open space, existing public use, and cultural and natural resources.
- Material – a commemorative work shall be constructed of durable material suitable to the outdoor environment.
- Landscape features – landscape features of commemorative works shall be compatible with the climate.

In 2016, the NPS and Friends of the World War II Memorial, with the assistance of Oehme van Sweden (OVS), the landscape architects of the World War II Memorial grounds, established the following criteria for evaluating the design alternatives. The first four relate to locating the D-Day Prayer at the Circle of Remembrance, and the last four relate to the aesthetics and visitor experience.

- Contemplative character.
- Vegetative screening.
- Compatibility with existing circulation and visitation patterns.
- Ease of long-term maintenance.
- Visual connection with the WWII Memorial
- Adherence with original WWII memorial design intent
- Comfort and legibility
- Adherence to original intent/prayer format

Staff supported the criteria proposed by the NPS and Friends of the World War II Memorial in 2016, and is carrying these criteria forward in the current analysis. Staff particularly supports the criteria for a site to provide opportunities for quiet contemplation and peaceful reflection and adherence with the original WWII memorial design intent.

The NPS and Friends of the World War II Memorial proposed two design alternatives, A and B, for the FDR Prayer Plaque. Each design incorporates the approximate 500-word length (over 2,000 characters) of the FDR prayer and necessary size for legibility (3/8" tall letters). Both design alternatives include additional modifications to the existing landscape retaining wall, benches, and pavers at the Circle of Remembrance in order to be more materially consistent with the primary memorial precinct. The existing material palette at the Circle of Remembrance consists of rusticated fieldstone retaining walls and Victorian park benches. These materials are unlike the primary memorial precinct, which consists of various types of granite and metal embellishments. Both design alternatives propose additional small multi-stem flowering trees along the perimeter of the Circle of Remembrance to enclose the space. Staff finds that both Alternatives A and B have positive qualities and could be developed as an appropriate design for the Circle of Remembrance.

Each design alternative is described and analyzed according the above criteria as well as the pros and cons of the design identified during the consultation process.

Alternative A: Free-Standing Symmetrical Plaque

Alternative A proposes a 42 square-foot plaque (36 inches tall) as a free-standing element between the two entry pathways. This symmetrical Alternative is inspired by the WWII Memorial, and provides seating capacity for 33 people (including four wheelchairs), and standing capacity for 205 people. The 24-inch tall landscape wall is punctuated with gaps with allow views to the landscape and spaces for accessible seating.

The following pros and cons were identified during the consultation process:

Pros:

- Retains existing circulation and visitation patterns; applicant's previous evaluation criterion.
- Design style and character is similar to the primary memorial precinct; applicant's previous evaluation criterion.

- FDR Prayer Plaque is prominently located and clearly distinguished from the Circle of Remembrance in a free-standing manner between two pedestrian paths.
- Circulation is flexible; two entry/exit points provide more circulation space and pedestrian routes.
- Provides more standing area and seating spaces (including two more wheelchair spaces) than Alternative B.
- Gaps allow for views into the landscape, and diminish the monolithic sense of the retaining wall.
- Preserves views to surrounding sites.

Cons:

- Existing pathways may be too wide or too close to the plaque viewing and contemplation area. The circulation spaces may compete with the size and area of the contemplation space within the Circle of Remembrance.
- Unnecessarily symmetrical form.

In addition to the pros and cons listed previously, staff notes that Alternative A is similar to the plaque location and design supported by the Commission in December 2016 because it completes the geometric form of the circle.

Alternative B: Integrated Asymmetrical Plaque

Alternative B proposes a 55 square-foot plaque (36 inches tall) as an element integrated with the benches and retaining wall encircling the Circle of Remembrance, framing a single entry pathway. This asymmetrical Alternative is inspired by landscape elements, and provides seating capacity for 25 people (including two wheelchairs), and standing capacity for 196 people. The solid, sloped landscape wall transitions from 18-inches to 36-inches in height.

The following pros and cons were identified during the consultation process:

Pros:

- Novel quality and contemporary design inspired by landscape elements.
- Enhanced formal relationship to the wider context of West Potomac Park and landscape.
- FDR Prayer Plaque is prominently located and integrated with the Circle of Remembrance as a singular design gesture.
- Preserves views to surrounding sites.
- Decreases impervious surface area.

Cons:

- Modifies existing circulation and visitation patterns; a deviation from the applicant's previous evaluation criterion.
- Design style and character differs from the primary memorial precinct; a deviation from the applicant's previous evaluation criterion.
- Repositions the Circle of Remembrance, which results in greater impacts to the existing landscape and vegetation.

- Circulation is limited; one entry/exit point provides less circulation space and pedestrian routes.
- Provides less standing area and seating space (including two fewer wheelchairs spaces) than Alternative A.
- FDR Prayer Plaque is weakly distinguished from other elements within the Circle of Remembrance; the benches and retaining wall, which should have a lower hierarchy than the plaque.
- Text may be difficult to read on the curving plaque.
- The retaining wall and benches are monolithic and do not allow views into the landscape.

Universal accessibility issues were raised during the consultation process. Blind pedestrians may not be able to detect the 36-inch tall plaque at ground level. The plaque could become an obstacle, and the sharp corners of the bronze plaque could be dangerous. A program for the FDR Prayer Plaque has not been defined. The applicant should consider what types of ceremonies, services, or events might occur and how much visitation the plaque or inscription will receive once it is in place.

In summary, staff notes that Alternative B repositions the Circle of Remembrance, modifies existing circulation patterns, and expresses a difference character from the primary WWII Memorial precinct. However, staff finds that Alternative B has a distinct contemporary design, locates the plaque prominently within the Circle of Remembrance, and preserves views to surrounding sites. Therefore, staff requests that the Commission support Alternative B.

At a future date, NPS will submit the plaque for preliminary and final approval. Staff recommends that the applicant continue refining the design and consider the following issues:

- Improve universally accessible (ABAAS-compliant) circulation into the Circle of Remembrance and around the plaque, while deterring pedestrian cut-throughs.
- Ensure ample accessible seating spaces for the anticipated visitor population.
- Create comfortable standing and sitting spaces for reading the plaque and contemplating, away from the entry/exit space.
- Improve the plaque design to promote text legibility, establish a clear hierarchy of the plaque above bench and wall elements, and discourage unintended uses such as sitting or sleeping.
- Provide porosity within the solid retaining wall to allow views into the surrounding landscape.
- Incorporate low-maintenance vegetation that promotes long-term legibility of the plaque.
- Coordinate the repositioned location of the Circle of Remembrance and landscape planting plans with the Potomac Park Levee Project.

CONFORMANCE TO EXISTING PLANS, POLICIES AND RELATED GUIDANCE

Comprehensive Plan for the National Capital

As noted above, the planning comments are designed to ensure that this project meets basic goals of the Comprehensive Plan.

National Historic Preservation Act

NCPC and NPS each have an independent responsibility to comply with Section 106 of the National Historic Preservation Act (NHPA). NPS initiated consultation with the District of Columbia State Historic Preservation Officer (DC SHPO) on October 1, 2015 and identified the Circle of Remembrance (Site A) as their preferred site. NPS determined selection of the Circle of Remembrance would have no adverse effect on historic properties and will continue consultation as the design phase of the project proceeds. The DC SHPO determined selection of the Circle of Remembrance would have no adverse effect on historic properties conditioned upon DC SHPO's opportunity to review and comment on the selection of the final location and designs and that any such comments will be incorporated into the project. NCPC will complete the requirements of Section 106 prior to the Commission's final approval of the design phase of the project.

National Environmental Policy Act

NCPC and NPS will each have an independent responsibility to comply with the National Environmental Policy Act (NEPA); NCPC's responsibility stems from its approval authority over the site and design of the FDR prayer plaque. With its current review and action, the Commission is providing comments on the location and design alternatives. Final NEPA documentation is not required at this time and NPS and NCPC are evaluating the appropriate level of NEPA documentation for the project. Final NEPA documentation will be completed prior to the Commission's action on the final site and design of the FDR prayer plaque.

CONSULTATION

Coordinating Committee

Without objection, the Committee forwarded the proposed comments on concept design to the Commission with the statement that the proposal has been coordinated with all participating agencies. The SHPO noted that their coordination is conditioned upon satisfactory completion of the Section 106 review process, including the execution of Memoranda of Agreement, as applicable.

U.S. Commission of Fine Arts

The U.S. Commission of Fine Arts (CFA) reviewed the project at its June 15, 2017 meeting. The CFA commented favorably on Alternative B. Previously, the CFA commented favorably on Alternative II at its November 17, 2016 meeting. CFA reviewed the project at its October 15, 2015 meeting and supported the selection of Site A, subject to the review of the plaque design.

National Capital Memorial Advisory Commission

The National Capital Memorial Advisory Commission (NCMAC) has not reviewed the current submission of the refined design within the Circle of Remembrance. However, the NCMAC reviewed the project at its September 14, 2015 meeting. The NCMAC commented favorably on Site A (Circle of Remembrance) and did not support the selection of Site C.

ONLINE REFERENCE

The following supporting documents for this project are available online:

- World War II Memorial: FDR D-Day Prayer Schematic Design.
- Public Law 113-123.

Prepared by Meghan Spigle
06/30/2017

POWERPOINT (ATTACHED)

NCPC File 7727: President Franklin D. Roosevelt Prayer Plaque

World War II Memorial

Submitted by the National Park Service

Concept Review

Commission meeting date: July 13, 2017

NCPC review authority: Commemorative Works Act (40 U.S.C. 8905) & Public Law 113-123

Applicant request: Concept Review

Delegated / consent / open / executive session: Open

NCPC Review Officer: M. Spigle

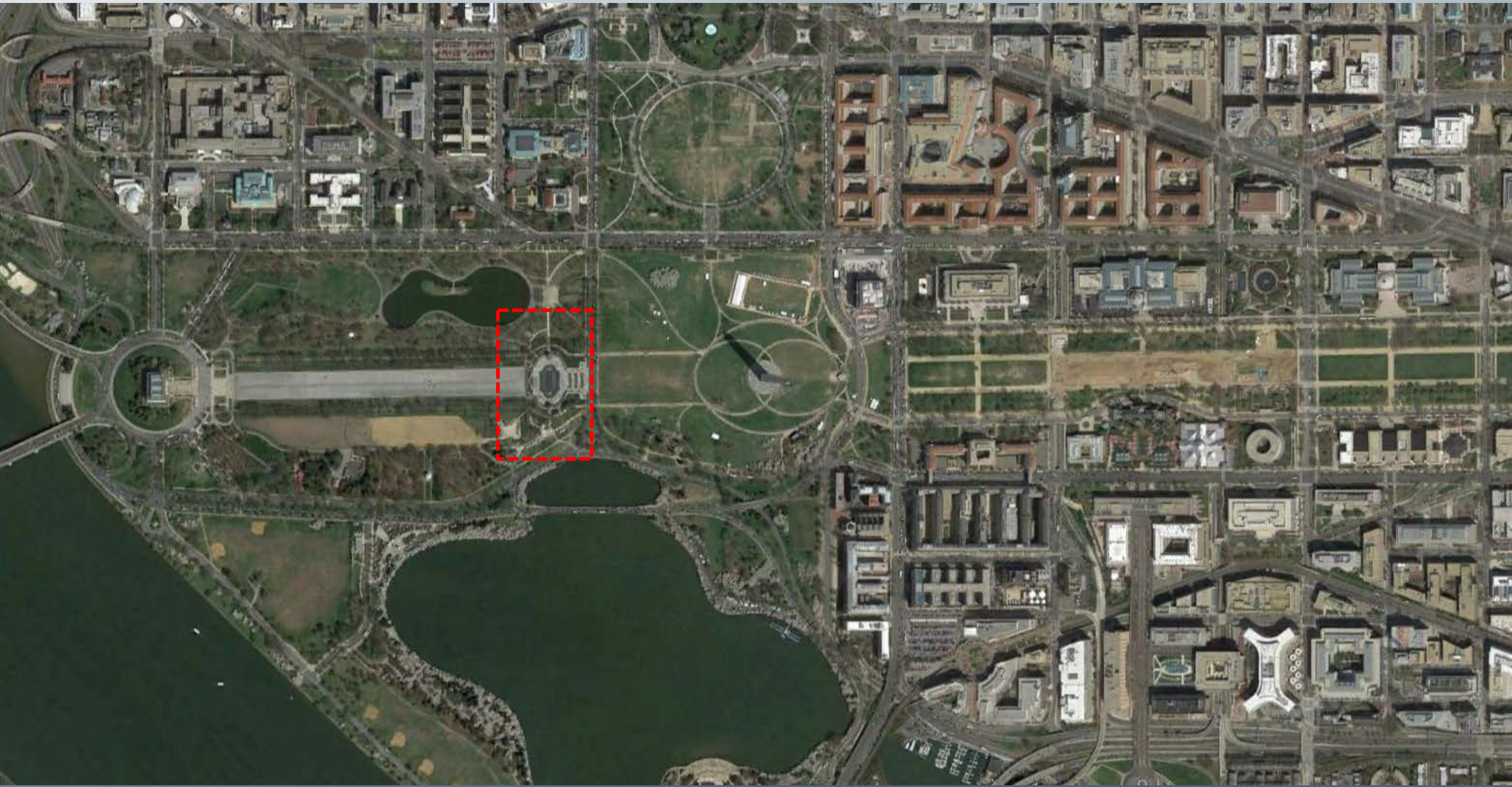
NCPC File number: 7727

Project summary:

Public Law 113-123 authorized placement of a plaque or inscription in the vicinity of the World War II Memorial with the words that President Franklin D. Roosevelt prayed with the United States on D-Day, June 6, 1944. The Commemorative Works Act sets forth approval requirements related to the design and placement of the plaque. In accordance with the CWA, NCPC approves site and design for new commemorative works.

The National Park Service (Department of the Interior) on behalf of the Friends of the World War II Memorial, is submitting two design alternatives at the Circle of Remembrance, to the National Capital Planning Commission for concept review. In December 2016, the Commission supported design Alternative II, which located a free-standing plaque in a manner that completed the geometric form of the circle. In November 2015, the Commission commented favorably on the Circle of Remembrance (Site A) for the location of the prayer plaque.

CFA reviewed the proposed design concept on June 15, 2017 and commented favorably on Scheme B. In November 2016, the CFA supported design Alternative II. On October 15, 2015 the U.S. Commission of Fine Arts provided comments on the site study. On September 14, 2015 the National Capital Memorial Advisory Commission provided comments on the site study. These comments will be included in the record.







PRAYER WITH THE NATION

ALMIGHTY GOD: OUR SONS, PRIDE OF OUR NATION, THIS DAY HAVE SET UPON A MIGHTY ENDEAVOR, A STRUGGLE TO PRESERVE OUR REPUBLIC, OUR RELIGION, AND OUR CIVILIZATION, AND TO SET FREE A SUFFERING HUMANITY.

LEAD THEM STRAIGHT AND TRUE; GIVE STRENGTH TO THEIR ARMS, STOUTNESS TO THEIR HEARTS, STEADFASTNESS TO THEIR FAITH.

THEY WILL NEED THY BLESSINGS. THEIR ROAD WILL BE LONG AND HARD. THE ENEMY IS STRONG. HE MAY HURL BACK OUR FORCES. SUCCESS MAY NOT COME WITH RUSHING SPEED, BUT WE SHALL RETURN AGAIN AND AGAIN; AND WE KNOW THAT BY THY GRACE, AND BY THE RIGHTEOUSNESS OF OUR CAUSE, OUR SONS WILL TRIUMPH.

THEY WILL BE SORE TRIED, BY NIGHT AND BY DAY, WITHOUT REST – TILL THE VICTORY IS WON. THE DARKNESS WILL BE RENT BY NOISE AND FLAME. MEN'S SOULS WILL BE SHAKEN WITH THE VIOLENCES OF WAR.

THESE MEN ARE LATELY DRAWN FROM THE WAYS OF PEACE. THEY FIGHT NOT FOR THE LUST OF CONQUEST. THEY FIGHT TO END CONQUEST. THEY FIGHT TO LIBERATE. THEY FIGHT TO LET JUSTICE ARISE, AND TOLERANCE AND GOOD WILL AMONG THY PEOPLE. THEY YEARN BUT FOR THE END OF BATTLE, FOR THEIR RETURN TO THE HAVEN OF HOME.

SOME WILL NEVER RETURN. EMBRACE THESE, FATHER, AND RECEIVE THEM, THY HEROIC SERVANTS, INTO THY KINGDOM.

AND FOR US AT HOME ~ FATHERS, MOTHERS, CHILDREN, WIVES, SISTERS, AND BROTHERS OF BRAVE MEN OVERSEAS ~ WHOSE THOUGHTS AND PRAYERS ARE EVER WITH THEM - HELP US ALMIGHTY GOD, TO REDICATE OURSELVES IN RENEWED FAITH IN THEE IN THIS HOUR OF GREAT SACRIFICE.

MANY PEOPLE HAVE URGED THAT I CALL THE NATION INTO A SINGLE DAY OF SPECIAL PRAYER. BUT BECAUSE THE ROAD IS LONG AND THE DESIRE IS GREAT, I ASK THAT OUR PEOPLE DEVOTE THEMSELVES IN CONTINUANCE OF PRAYER. AS WE RISE EACH NEW DAY, AND AGAIN WHEN EACH DAY IS SPENT, LET WORDS OF PRAYER BE ON OUR LIPS, INVOKING THY HELP TO OUR EFFORTS.

GIVE US STRENGTH, TOO ~ STRENGTH IN OUR DAILY TASKS, TO REDOUBLE THE CONTRIBUTIONS WE MAKE IN THE PHYSICAL AND MATERIAL SUPPORT OF OUR ARMED FORCES.

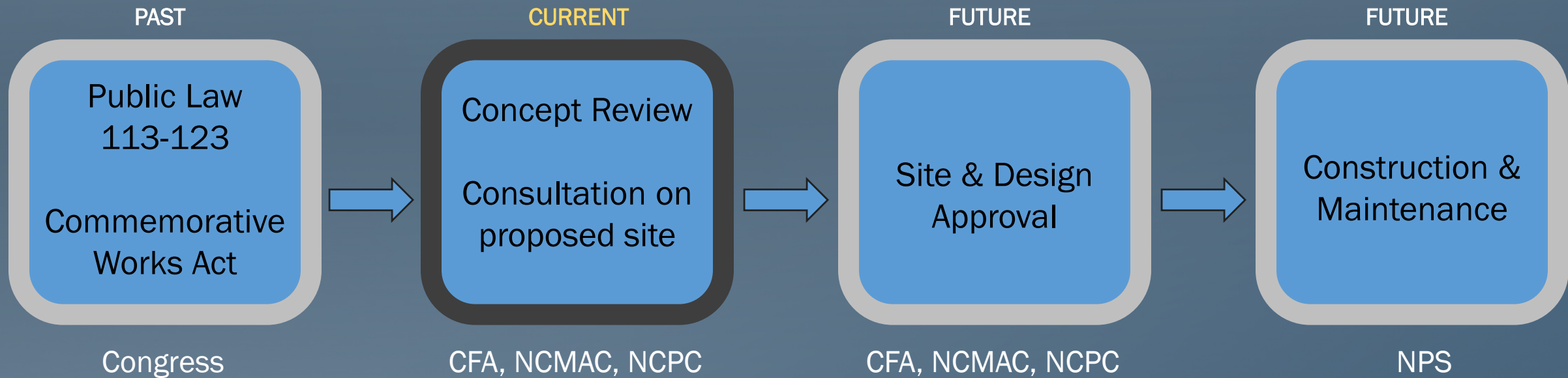
AND LET OUR HEARTS BE STOUT, TO WAIT OUT THE LONG TRAVAIL, TO BEAR SORROWS THAT MAY COME, TO IMPART OUR COURAGE UNTO OUR SONS WHERESOEVER THEY MAY BE.

AND, O LORD, GIVE US FAITH. FAITH IN THEE; FAITH IN OUR SONS; FAITH IN EACH OTHER; FAITH IN OUR UNITED CRUSADE. LET NOT THE KEENESS OF OUR SPIRIT EVER BE DULLED. LET NOT THE IMPACTS OF TEMPORARY EVENTS, OF TEMPORAL MATTERS OF BUT FLEETING MOMENT ~ LET NOT THESE DETER US IN OUR UNCONQUERABLE PURPOSE.

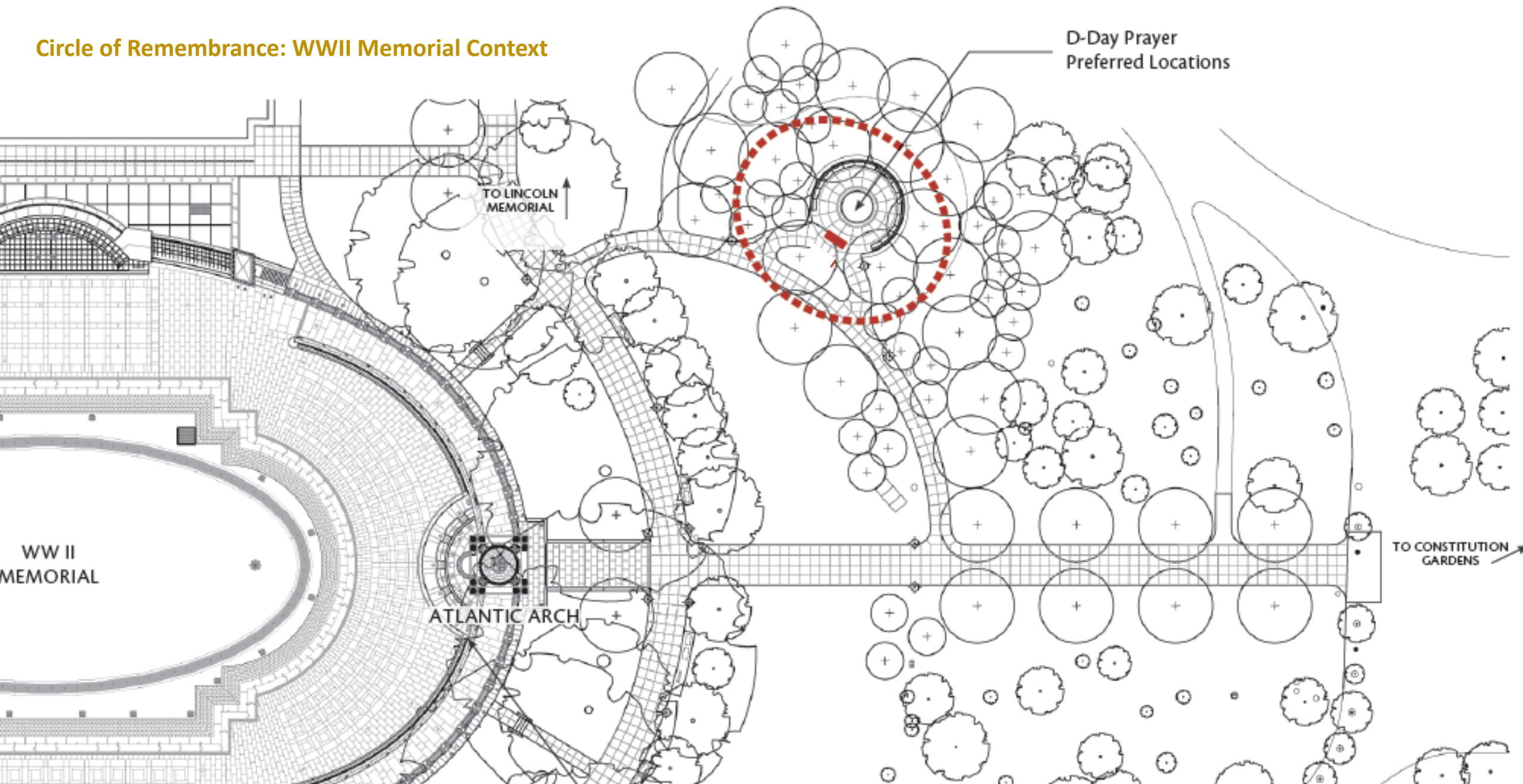
WITH THY BLESSING, WE SHALL PREVAIL OVER THE UNHOLY FORCES OF OUR ENEMY. HELP US CONQUER THE APOSTLES OF GREED AND RACIAL ARROGANCIES. LEAD US TO THE SAVING OF OUR COUNTRY, AND WITH OUR SISTER NATIONS INTO A WORLD UNITY THAT WILL SPELL A SURE PEACE – A PEACE INVULNERABLE TO THE SCHEMINGS OF UNWORTHY MEN. AND A PEACE THAT WILL LET ALL MEN LIVE IN FREEDOM, REAPING THE JUST REWARDS OF THEIR HONEST TOIL.

THY WILL BE DONE, ALMIGHTY GOD. AMEN.

PRESIDENT FRANKLIN DELANO ROOSEVELT
WHITE HOUSE, WASHINGTON, DC
EVENING - JUNE 06, 1944



Circle of Remembrance: WWII Memorial Context



Criteria for Evaluating the Design Alternatives

Several criteria were developed to evaluate the design alternatives for the D-Day Prayer Memorial within the Circle of Remembrance. The first four criteria listed below were carried forward from the Site Analysis because they are pertinent to locating the Prayer within the Circle of Remembrance site. The final four criteria were developed specifically to evaluate the aesthetics and visitor experience of the D-Day Prayer Memorial.

Criteria for siting the D-Day Prayer Memorial within the Circle of Remembrance

CONTEMPLATIVE CHARACTER

The D-Day Prayer shall be sited to allow contemplation and reflection. Concepts for the Prayer shall preserve the contemplative character and purpose of the Circle, while allowing for quiet reflection and solemnity called for by the Prayer itself.

VEGETATIVE SCREENING

The D-Day Prayer shall be sited with consideration for preservation of existing mature vegetation and selective inclusion of new planting to provide a sense of comfortable enclosure and filter viewsheds to the bustling primary Memorial precinct.

COMPATIBILITY WITH EXISTING CIRCULATION AND VISITATION PATTERNS

The siting of the D-Day Prayer shall limit disturbance to the existing circulation patterns and shall not require additional walkways. In addition, the D-Day Prayer shall be sited so that visitors can easily locate it.

EASE OF LONG-TERM MAINTENANCE

The D-Day Prayer shall be designed and sited with consideration for long-term maintenance. The NPS has requested that the D-Day Prayer be inscribed in bronze rather than stone for ease of maintenance. Also, the D-Day Prayer shall be sited in a location where it can be elevated (and not flat on the ground) for ease of maintenance.

Criteria for evaluating the design of the D-Day Prayer Memorial

VISUAL CONNECTION WITH THE WWII MEMORIAL

The D-Day Prayer shall be sited to allow visitors to have views of the WWII Memorial while reading the Prayer.

ADHERENCE WITH ORIGINAL WWII MEMORIAL DESIGN INTENT

The design of the D-Day Prayer presents an opportunity to more closely align the Circle of Remembrance with the WWII Memorial in material and character. The proposed concepts shall incorporate the granite and bronze used at the WWII Memorial.

COMFORT AND LEGIBILITY

The D-Day Prayer shall be inscribed or engraved in a size and location sufficient for legibility of the text and with enough space for visitors to gather while visiting the Prayer.

ADHERENCE TO ORIGINAL INTENT / PRAYER FORMAT

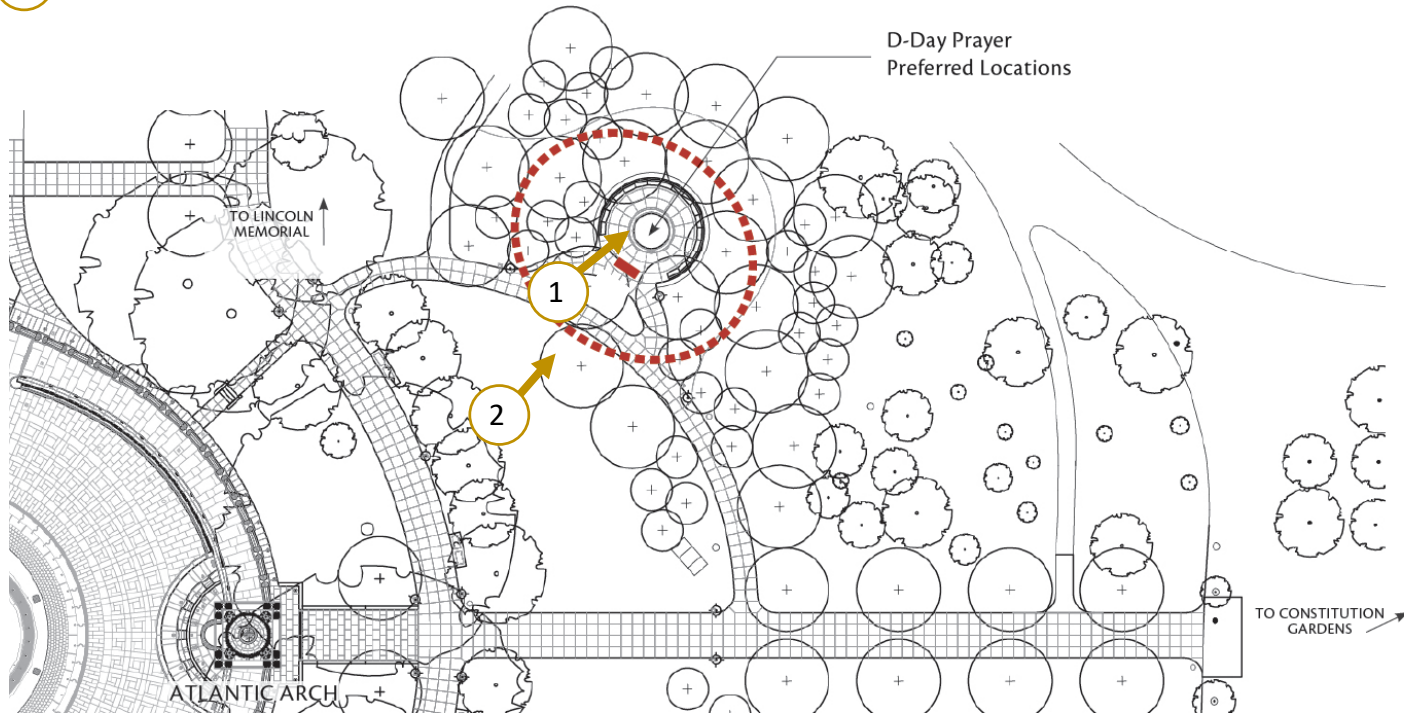
The text of the D-Day Prayer shall be displayed in a manner that is consistent with the tone and language of FDR's original delivery of the Prayer.



1 View into Circle, Constitution Gardens beyond



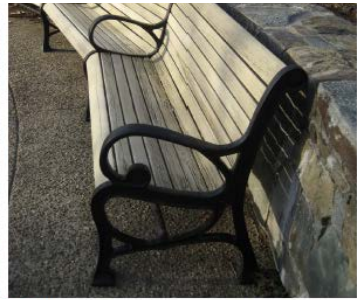
2 View from the lawn in front of the Circle of Remembrance



Concrete Paving



Granite Planter Curb ('Greene County' granite)



Wood Bench with Cast Iron Frame and Arm Rest



Fieldstone Wall



Trash Receptacle



Light Pole

D-Day Prayer Design Alternative II

Concept Description

This alternative ‘completes’ the Circle, placing the prayer on a curved granite wall within the bounds of the Circle’s circumference. Similarly to Alternative I, The Prayer is inscribed onto a bronze plaque that is placed on top of the wall. The wall is approximately 2.5’ tall, 3.5’ wide and 14’ long.

Panel Dimensions

FRANKLIN D. ROOSEVELT'S D-DAY PRAYER			
MY FELLOW AMERICANS IN THIS POIGNANT HOUR, I ASK YOU TO JOIN ME IN PRAYER.			
ALMIGHTY GOD: OUR SONS, PRIDE OF OUR NATION, THIS DAY HAVE SET UPON A MIGHTY ENDEAVOR, A STRUGGLE TO PRESERVE OUR REPUBLIC, OUR RELIGION, AND OUR CIVILIZATION, AND TO SET FREE A SUFFERING HUMANITY.	THESE ARE MEN LATELY DRAWN FROM THE WAYS OF PEACE, THEY FIGHT NOT FOR THE LUST OF CONQUEST, THEY FIGHT TO END CONQUEST, THEY FIGHT TO LIBERATE, THEY FIGHT TO LET JUSTICE ARISE, AND TOLERANCE AND GOOD WILL AMONG ALL THE PEOPLE THEY YEARN NOT FOR THE END OF BATTLE, FOR THEIR RETURN TO THE HEAVEN OF HOME.	MANY PEOPLE HAVE URGED THAT I CALL THE NATION INTO A SINGLE DAY OF SPECIAL PRAYER. BUT BECAUSE THE ROAD IS LONG AND THE STRUGGLE GREAT, I ASK THAT OUR PEOPLE DEVOTE THEMSELVES IN A CONTINUANCE OF PRAYER, AS WE RISE TO EACH NEW DAY, AND AGAIN WHEN EACH DAY IS SPENT, LET WORDS OF PRAYER BE ON OUR LIPS, INVOKING THY HELP TO OUR EFFORTS.	AND, O LORD, GIVE US FAITH, GIVE US FAITH IN THE FAITH IN OUR SONS, FAITH IN EACH OTHER, FAITH IN OUR UNITED CRUSADE, LET NOT THE LIVENESS OF OUR SPIRIT EVER BE DULLED, LET NOT THE IMPACTS OF TEMPORARY EVENTS, OF TEMPORAL MATTERS OF BUT FLEETING MOMENT LET NOT THESE DETER US IN OUR UNCONQUERABLE PURPOSE.
LEAD THEM STRAIGHT AND TRUE, GIVE STRENGTH TO THEIR ARMS, STOUTNESS TO THEIR HEARTS, STRAIDFASTNESS IN THEIR FAITH.	SOME WILL NEVER RETURN, EMBRACE THESE, FATHER, AND RECEIVE THEM, THY BROTHERS SERVANTS INTO THY KINGDOM.	GIVE US STRENGTH, TOO - STRENGTH IN OUR DAILY TASKS, TO REDOUBLE THE CONTRIBUTIONS WE MAKE IN THE PHYSICAL AND THE MATERIAL SUPPORT OF OUR ARMED FORCES.	WITH THY BLESSING, WE SHALL PREVAIL, OVER THE UNHOLY FORCES OF OUR ENEMY, HELP US TO CONQUER THE APOSTLES OF GREED AND RACIAL ARROGANCIES, LEAD US TO THE SAVING OF OUR COUNTRY, AND WITH OUR SISTER NATIONS INTO A WORLD UNITY THAT WILL SPELL A SURE PEACE, A PEACE INVULNERABLE TO THE SCHEMING OF UNWORTHY MEN, AND A PEACE THAT WILL LET ALL OF MEN LIVE IN FREEDOM, REAPING THE JUST REWARDS OF THEIR HONEST TOIL.
THEY WILL NEED THY BLESSINGS, THEIR ROAD WILL BE LONG AND HARD, FOR THE ENEMY IS STRONG, HE MAY HURL BACK OUR FORCES, SUCCESS MAY NOT COME WITH RUSSHO SPEED, BUT WE SHALL RETURN AGAIN, AND AGAIN, AND WE KNOW THAT BY THY GRACE, AND BY THE RIGHTNESS OF OUR CAUSE, OUR SONS WILL TRUMPH.	AND FOR US AT HOME - FATHERS, MOTHERS, CHILDREN, WIVES, SISTERS, AND BROTHERS OF BRAVE MEN OVERSEAS - WHOSE THOUGHTS AND PRAYERS ARE EVER WITH THEM - HELP US, ALMIGHTY GOD, TO REDEDICATE OURSELVES IN REVIVED FAITH IN THESE IN THE HOUR OF GREAT SACRIFICE.	AND LET OUR HEARTS BE STOUT, TO WAIT OUT THE LONG TRAVAIL, TO BEAR SORROWS THAT MAY COME TO IMPART OUR COURAGE UNTO OUR SONS WHERESOEVER THEY MAY BE.	THY WILL BE DONE, ALMIGHTY GOD. AMEN.



Alternative II: Four Panel plaque



D-Day Prayer Design Alternative II

Design Alternative II was selected as a preferred concept because it emphasizes the 'circular' form of the Circle of Remembrance and creates a strong visual connection with the WWII Memorial. This alternative would provide additional enclosure for the Circle, while creating a defined threshold.

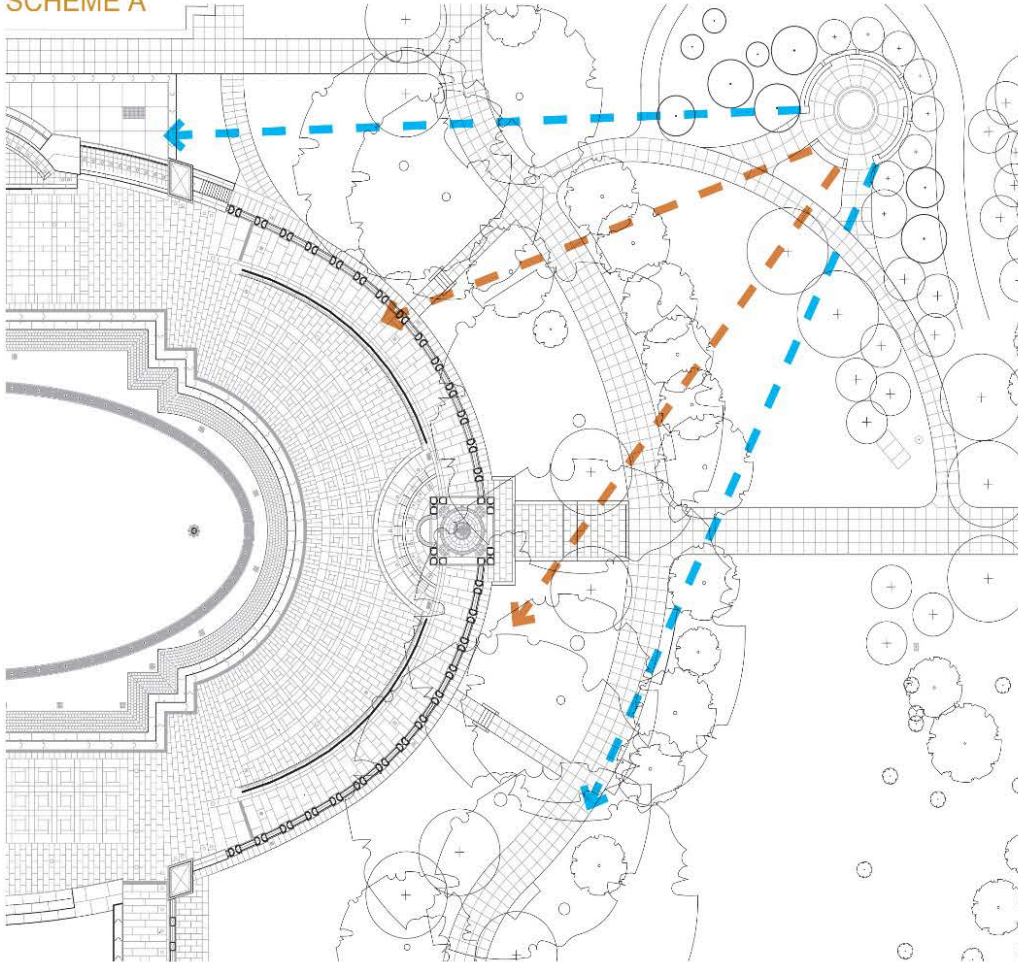


-  Circle of Remembrance orientation
-  D-Day Prayer Plaque viewed

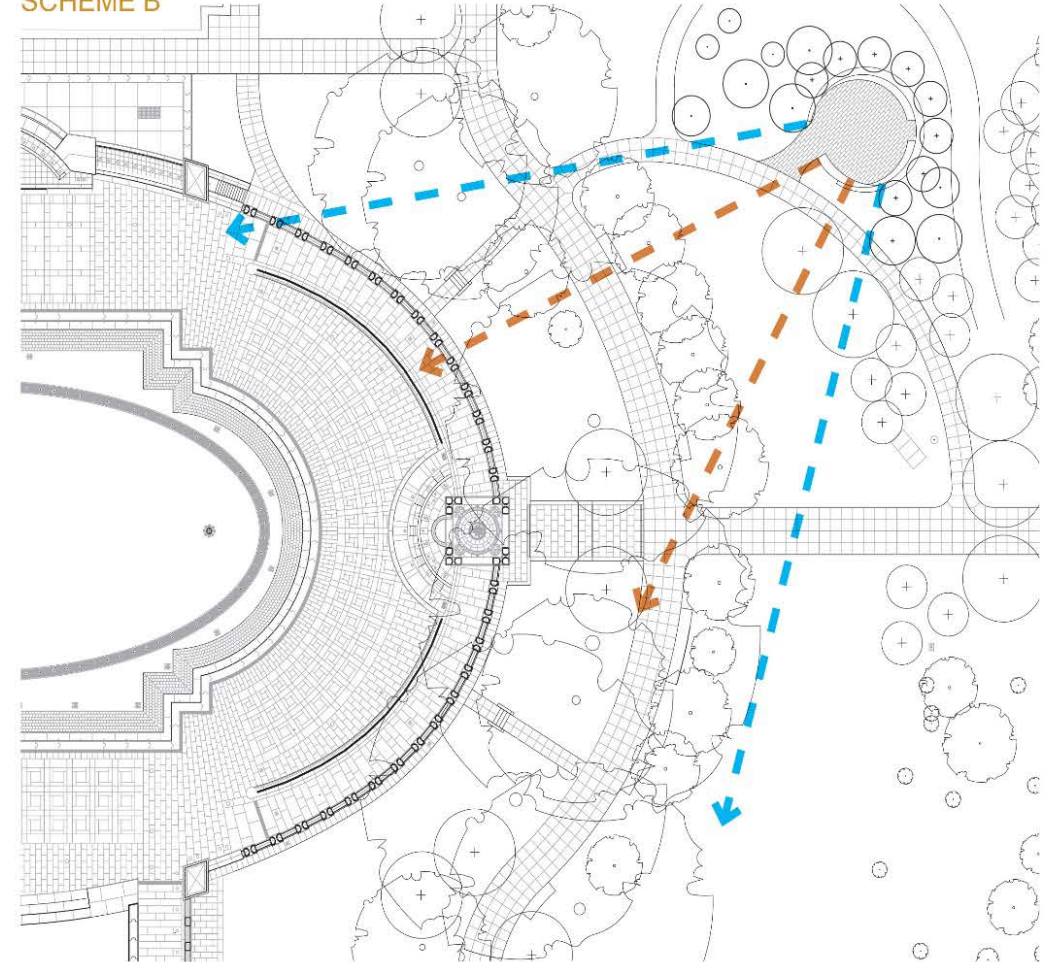
WWII Memorial Context

Both of the proposed schemes align the Prayer with views of the WWII Memorial, providing the desired orientation and viewshed. Scheme A maintains the existing Circle location and path layout, allowing the Prayer to be a discrete element within the circumference of the Circle. Scheme B maintains the footprint of the Circle, but reorients and shifts its location to allow the Prayer to become a cohesive extension of its geometry.

SCHEME A



SCHEME B



Establishing an arrival sequence and contemplative space

The next scheme arose from the desire to join the Circle of Remembrance with the Prayer plaque through one cohesive gesture. This scheme also endeavors to enhance the contemplative experience of the Circle and Prayer through a revised entry sequence. The diagrams which follow present the conceptual grounding and methodology for Scheme B.

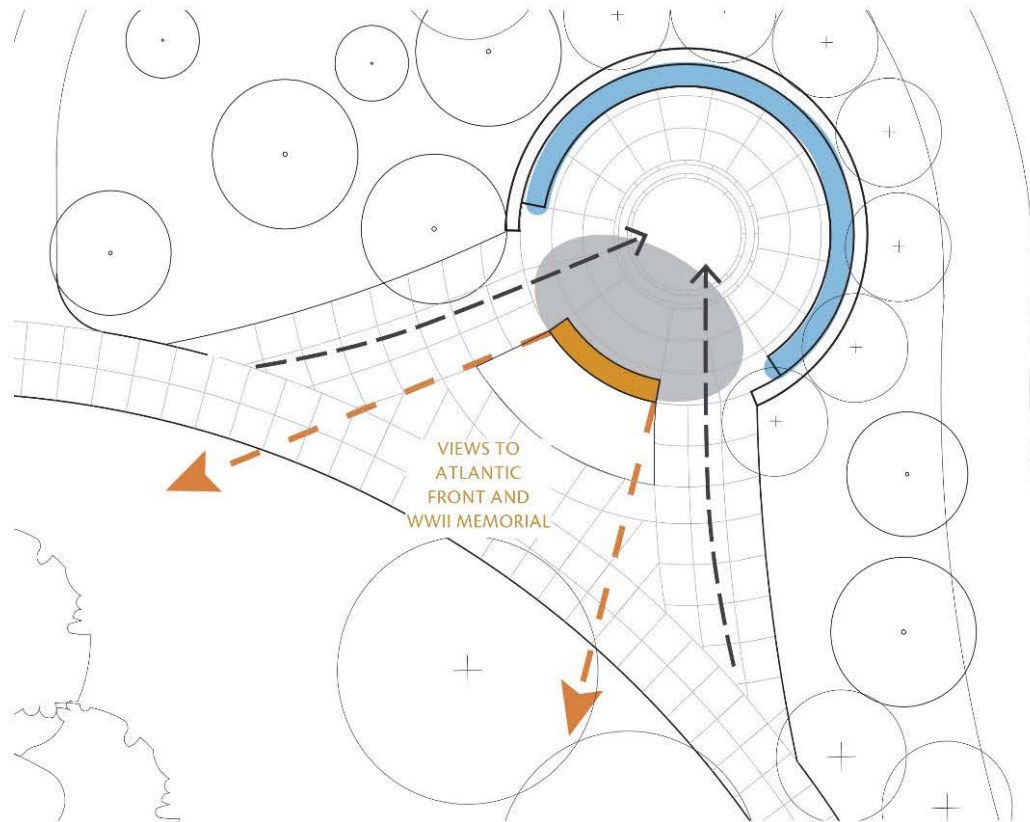


DIAGRAM I | Existing Orientation and Viewshed: In Scheme A the Prayer plaque is centered within the circumference of the circle, with paths on either side. This placement could expose readers of the Prayer to traffic coming in and out, reducing the 'contemplative' nature of this experience.

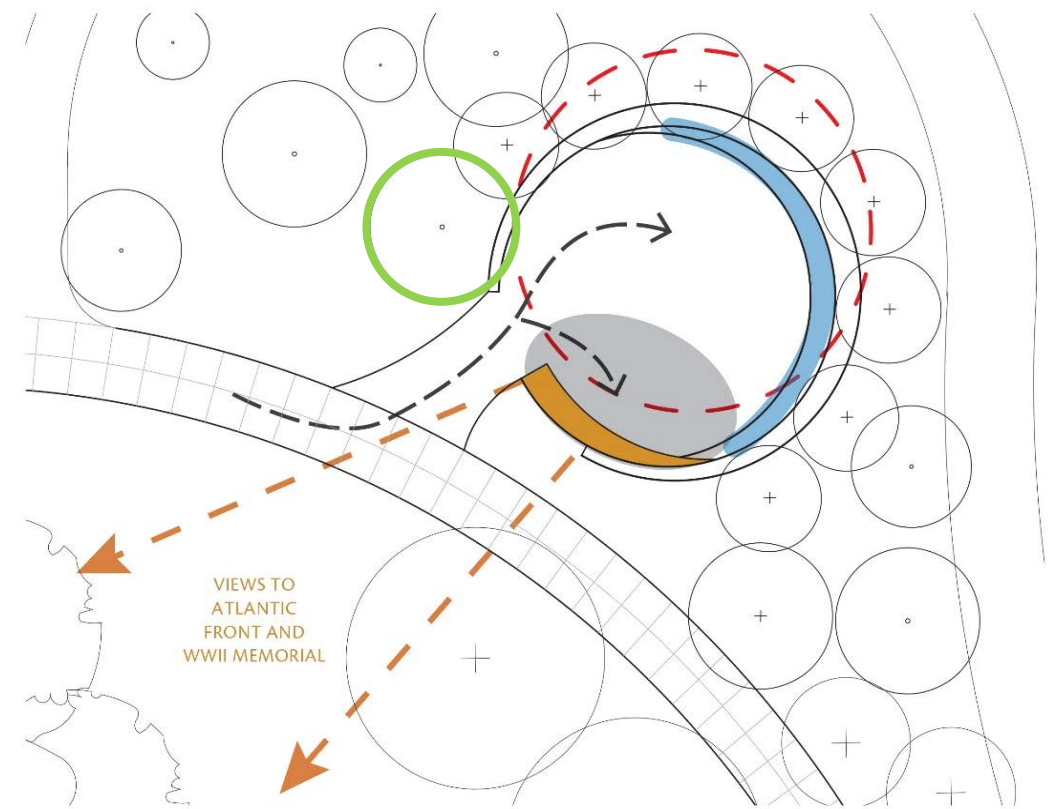
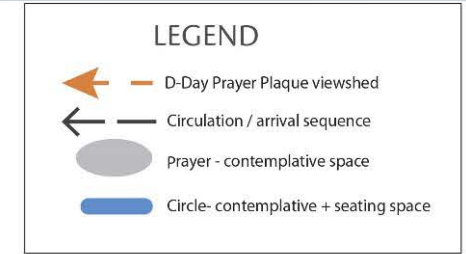


DIAGRAM IV | MOVING the Circle: In order to provide the desirable orientation, a pleasing arrival sequence, and maintain existing trees, the Circle is moved closer to the existing path, minimizing the extent of paving and improving the layout of the walkway. At the same time, this allows sufficient low planting in front of the Prayer to buffer the contemplative experience and maintain views to the WWII Memorial.

D-Day Prayer Scheme A

Concept Description

This scheme develops the previous concept by 'punctuating' the wall with gaps and allowing the Prayer to be a 'free-standing' element that is lighter and not embedded in stone. At the same time, this proposal maintains the existing symmetrical pathways and relates closely with the design language of the WWII Memorial. The Prayer remains a distinct element within the circumference of the Circle, separated by circulation on either side.

This scheme provides the following capacity for gathering and seating:

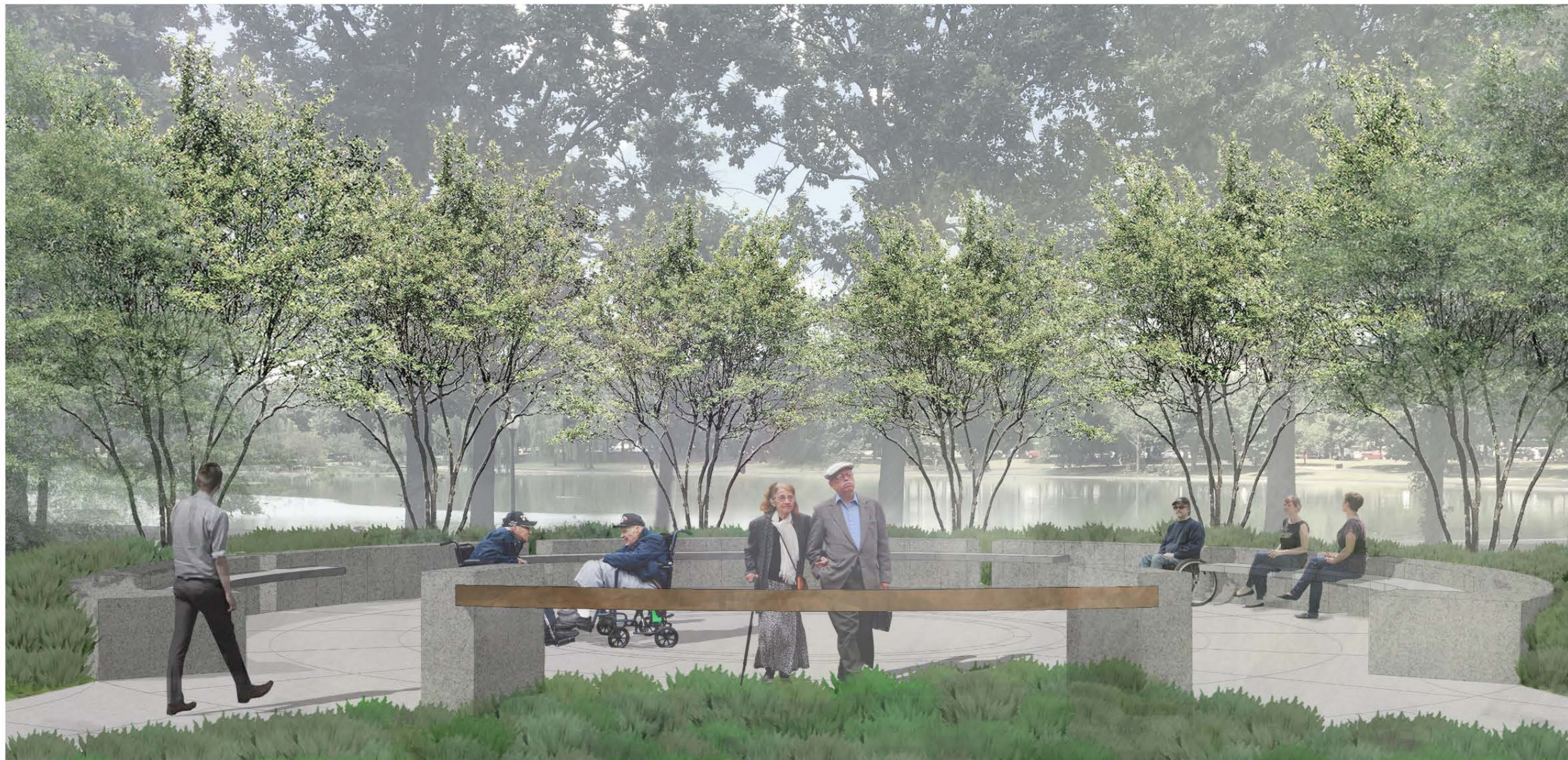
- Seating capacity - 33, including 4 wheelchair spaces (based on 21" per seat)
- Gathering space - 51 people (based on IBC 2012 code for classrooms of 20 SF/person)
- Standing room capacity - 205 people (based on IBC 2012 code for gathering of 5 SF/person)



D-Day Prayer Scheme A

View to WWII Memorial In this scheme, the Prayer is a free-standing element within the circumference of the Circle of Remembrance. The bronze plaque is held by two granite pillars, providing material continuity with the walls but allowing for a lighter feeling. Planting beyond the Prayer provides a green backdrop that reinforces the form of the Circle without obscuring views beyond.





D-Day Prayer Scheme B

Concept Description

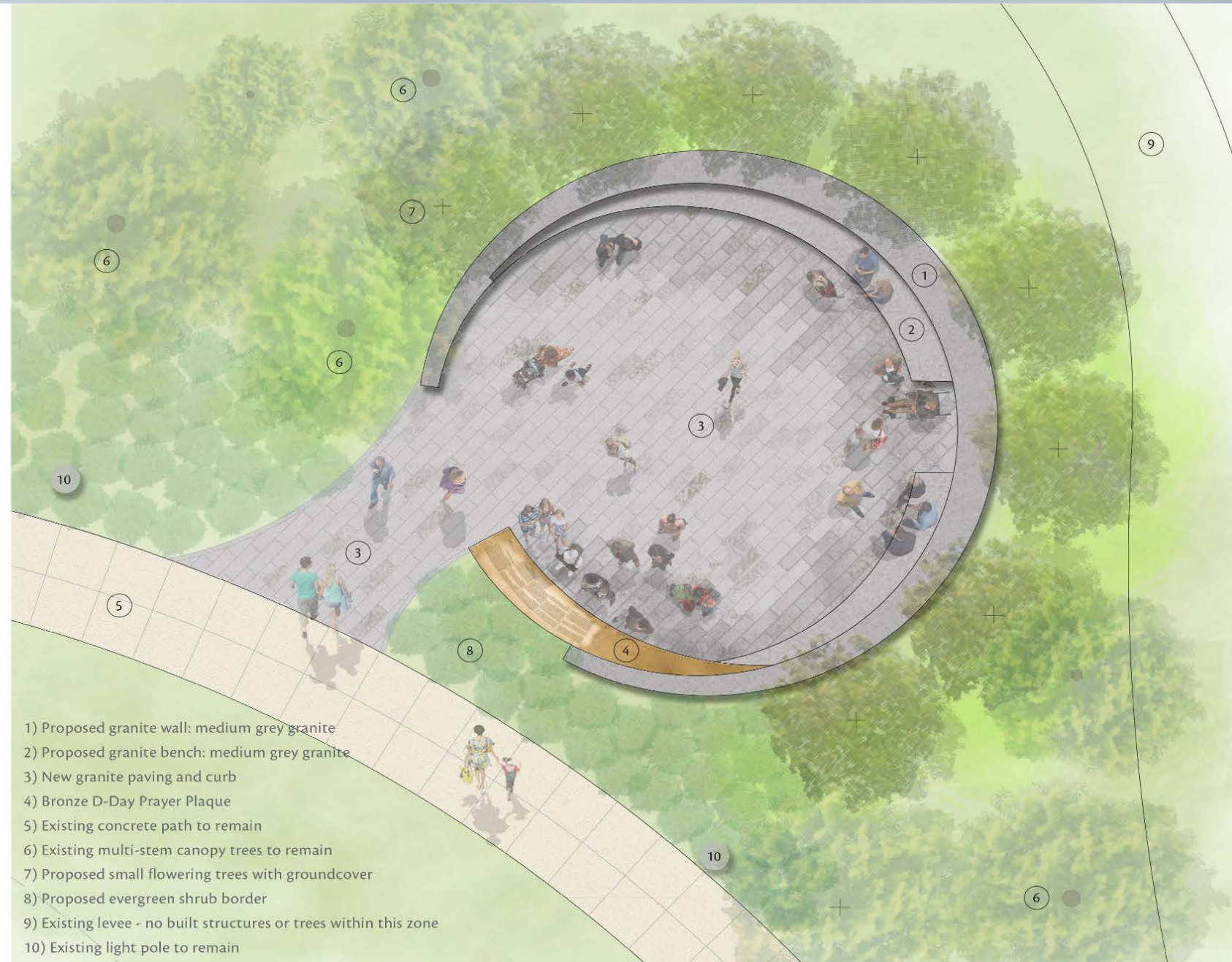
This scheme develops the previous concept through a unified, sculptural gesture that encompasses the retaining wall, bench, and the Prayer itself.

The bench is cantilevered from the circular wall to create lightness and emphasize the overall gesture. Similarly, the Prayer is an extension of the circular wall, overlapping with the curving bench, and providing an elegant transition. This treatment allows for greater transparency both into the Circle and outward, towards the Memorial.

In this proposal, the Circle of Remembrance is rotated and shifted to allow the Prayer plaque to be oriented towards the WWII Memorial, while allowing for circulation on the edge of the space, rather than into the center.

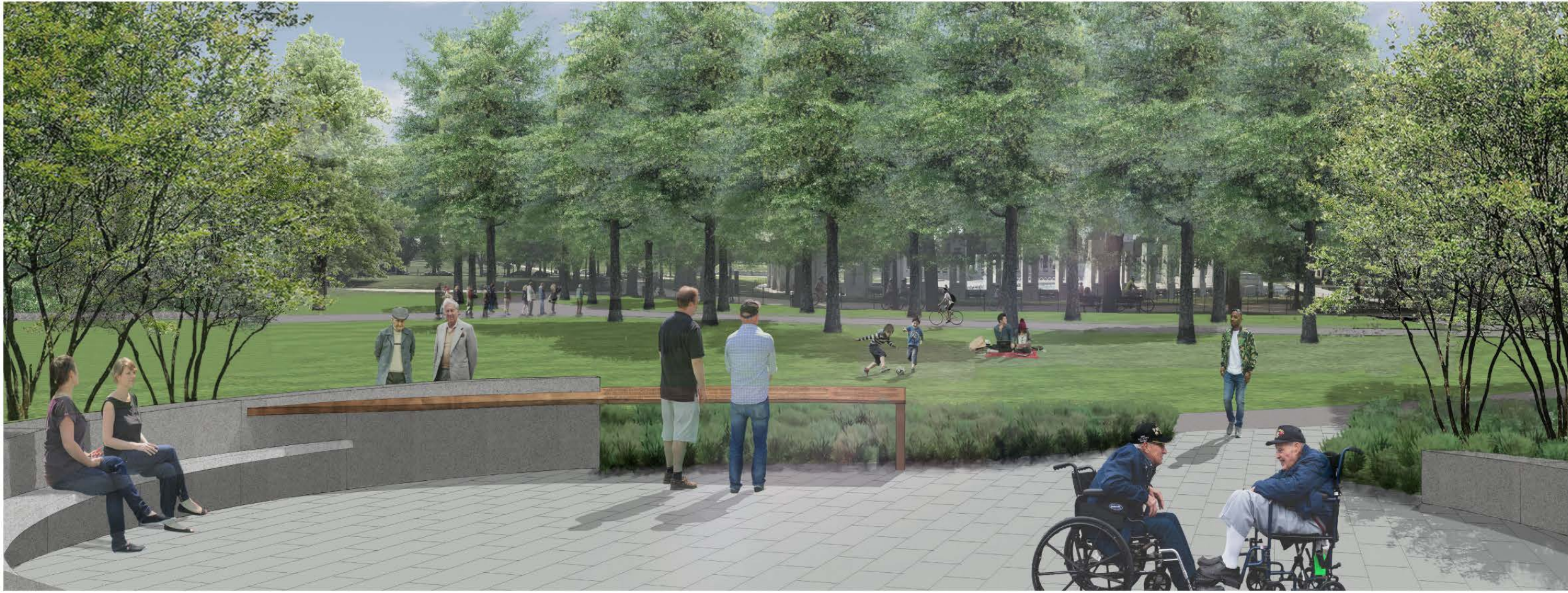
This scheme provides the following capacity for gathering and seating:

- Seating capacity - 25, including 2 wheelchair spaces (based on 21" per seat)
- Gathering space - 49 people (based on IBC 2012 code for classrooms for 20 SF/person)
- Standing room capacity - 196 people (based on IBC 2012 code for gathering for 5 SF/person)

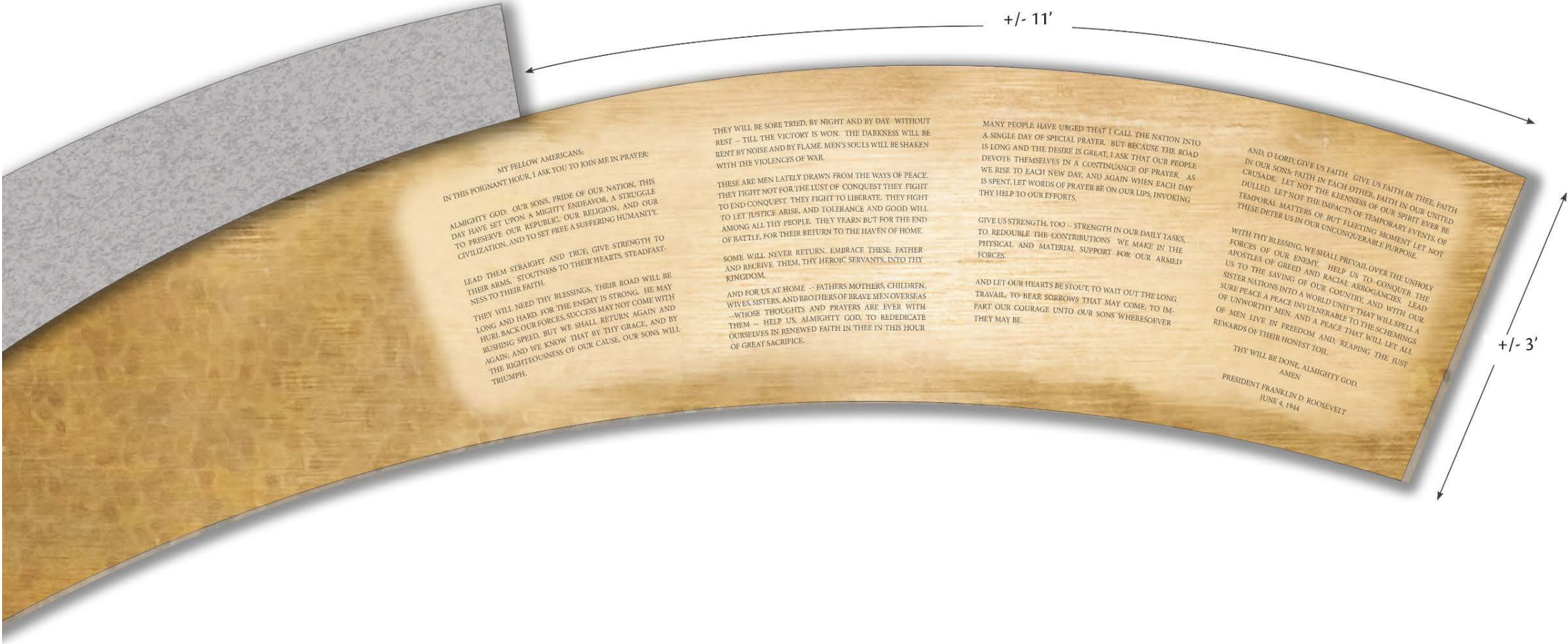


D-Day Prayer Scheme B

View to WWII Memorial In this scheme, the Prayer is a quiet extension of the overall gesture of the Circle of Remembrance. At the same time, it orients and frames visitors to the WWII Memorial. Planting beyond the Prayer provides a green backdrop that reinforces the form of the Circle without obscuring views beyond.







MY FELLOW AMERICANS,
IN THIS POIGNANT HOUR, I ASK YOU TO JOIN ME IN PRAYER:

ALMIGHTY GOD: OUR SONS, PRIDE OF OUR NATION, THIS
DAY HAVE SET UPON A MIGHTY ENDEAVOR, A STRUGGLE
TO PRESERVE OUR REPUBLIC, OUR RELIGION, AND OUR
CIVILIZATION, AND TO SET FREE A SUFFERING HUMANITY.

LEAD THEM STRAIGHT AND TRUE, GIVE STRENGTH TO
THEIR ARMS, STOUTNESS TO THEIR HEARTS, STEADFAST-
NESS TO THEIR FAITH.

THEY WILL NEED THY BLESSINGS, THEIR ROAD WILL BE
LONG AND HARD, FOR THE ENEMY IS STRONG. HE MAY
HURL BACK OUR FORCES, SUCCESS MAY NOT COME WITH
RUSHING SPEED, BUT WE SHALL RETURN AGAIN AND
AGAIN; AND WE KNOW THAT BY THY GRACE, AND BY
THE RIGHTEOUSNESS OF OUR CAUSE, OUR SONS WILL
TRIUMPH.

THEY WILL BE SORE TRIED, BY NIGHT AND BY DAY, WITHOUT
REST - TILL THE VICTORY IS WON. THE DARKNESS WILL BE
RENT BY NOISE AND BY FLAME, MEN'S SOULS WILL BE SHAKEN
WITH THE VIOLENCES OF WAR.

THESE ARE MEN LATELY DRAWN FROM THE WAYS OF PEACE,
THEY FIGHT NOT FOR THE LUST OF CONQUEST, THEY FIGHT
TO END CONQUEST. THEY FIGHT TO LIBERATE, THEY FIGHT
TO LET JUSTICE ARISE, AND TOLERANCE AND GOOD WILL
AMONG ALL THY PEOPLE. THEY YEARN BUT FOR THE END
OF BATTLE, FOR THEIR RETURN TO THE HAVEN OF HOME.

SOME WILL NEVER RETURN, EMBRACE THESE, FATHER
AND RECEIVE THEM, THY HEROIC SERVANTS, INTO THY
KINGDOM.

AND FOR US AT HOME -- FATHERS, MOTHERS, CHILDREN,
WIVES, SISTERS, AND BROTHERS OF BRAVE MEN OVERSEAS
-- WHOSE THOUGHTS AND PRAYERS ARE EVER WITH
THEM -- HELP US, ALMIGHTY GOD, TO REDEDICATE
OURSELVES IN RENEWED FAITH IN THEE IN THIS HOUR
OF GREAT SACRIFICE.

MANY PEOPLE HAVE URGED THAT I CALL THE NATION INTO
A SINGLE DAY OF SPECIAL PRAYER. BUT BECAUSE THE ROAD
IS LONG AND THE DESIRE IS GREAT, I ASK THAT OUR PEOPLE
DEVOTE THEMSELVES IN A CONTINUANCE OF PRAYER. AS
WE RISE TO EACH NEW DAY, AND AGAIN WHEN EACH DAY
IS SPENT, LET WORDS OF PRAYER BE ON OUR LIPS, INVOKING
THY HELP TO OUR EFFORTS.

GIVE US STRENGTH, TOO -- STRENGTH IN OUR DAILY TASKS,
TO REDOUBLE THE CONTRIBUTIONS WE MAKE IN THE
PHYSICAL AND MATERIAL SUPPORT FOR OUR ARMED
FORCES.

AND LET OUR HEARTS BE STOUT, TO WAIT OUT THE LONG
TRAVAIL, TO BEAR SORROWS THAT MAY COME, TO IM-
PART OUR COURAGE UNTO OUR SONS WHERESOEVER
THEY MAY BE.

AND, O LORD, GIVE US FAITH. GIVE US FAITH IN THEE, FAITH
IN OUR SONS, FAITH IN EACH OTHER, FAITH IN OUR UNITED
CRUSADE. LET NOT THE KEENNESS OF OUR SPIRIT EVER BE
DULLED. LET NOT THE IMPACTS OF TEMPORARY EVENTS OF
TEMPORAL MATTERS OF BUT FLEETING MOMENT LET NOT
THESE DETER US IN OUR UNCONQUERABLE PURPOSE.

WITH THY BLESSING, WE SHALL PREVAIL OVER THE UNHOLY
FORCES OF OUR ENEMY. HELP US TO CONQUER, THE
US TO THE SAVING OF OUR COUNTRY, AND WITH OUR
SISTER NATIONS INTO A WORLD UNITY THAT WILL SPELL A
SURE PEACE, A PEACE INVULNERABLE TO THE SCHEMINGS
OF UNWORTHY MEN, AND A PEACE THAT WILL LET ALL
OF MEN LIVE IN FREEDOM, AND, REAPING THE JUST
REWARDS OF THEIR HONEST TOIL.

THY WILL BE DONE, ALMIGHTY GOD.
AMEN
PRESIDENT FRANKLIN D. ROOSEVELT
JUNE 4, 1944

D-Day Prayer Planting Design

Concept Description

The planting design is intended to emphasize the form of the space, encircling the walls with small, multi-stem flowering trees that provide a sense of enclosure and filtered views towards Constitution Gardens. This proposal also incorporates existing trees, taking advantage of their established scale and shade.

Existing and proposed trees are underplanted with hardy groundcovers that will provide yearlong greenery with minimal maintenance. To provide seasonal interest, a mix of spring and summer bulbs are interspersed throughout the groundcover. The inclusion of white flowers also references a beautiful but unrealized vision for a 'floral memorial' symbolizing peace and honoring the fallen and their families.

At the Circle's entry, an evergreen threshold of low, hardy shrubs frames views in and out of the Circle, while providing seasonal interest through fruit and fall color.

Potential species

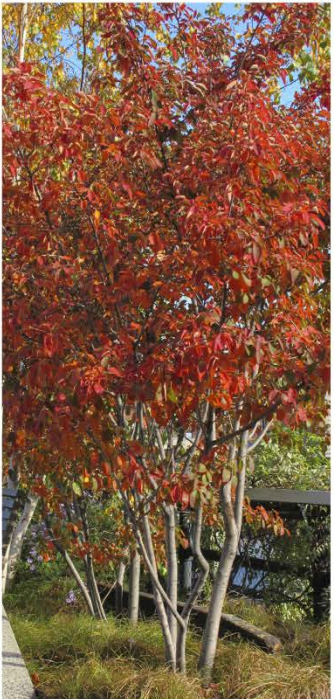
The following images are representative of initial species being considered. The final plant selection will be developed in concert with Friends of the WWII Memorial and the National Park Service to ensure consistency with the design vision, fulfillment of maintenance requirements, and consideration of the plant palette of the Memorial and National Mall context.



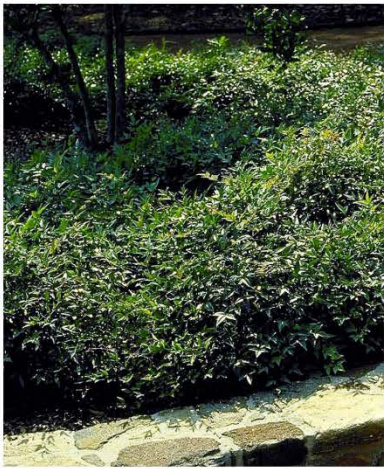
Existing multi-stem canopy trees: *Chionanthus retusus*



Proposed trees: *Amelanchier grandiflora* 'Autumn Brilliance'



Proposed trees: *Amelanchier grandiflora* 'Autumn Brilliance'



Proposed evergreen shrub/groundcover: *Nandina domestica* 'Harbor Dwarf'



Proposed shrub: *Hydrangea quercifolia* 'Sikes Dwarf' | Oakleaf Hydrangea



Proposed groundcover: *Epimedium x versicolor* 'Sulphurum'



Proposed bulbs: White narcissus, Snowdrops species TBD

WW II Memorial Material Precedents

Materiality and Design Intent

The proposed concepts for the FDR D-Day Prayer are designed to be consistent materially and aesthetically with the WWII Memorial.

Benches

The benches at the WWII Memorial are comprised of light grey 'Kershaw' granite with gently rounded edges. The walls and benches at the Circle of Remembrance and the FDR D-Day Prayer would reflect this design language.

The material of the new walls and benches could be the same 'Kershaw' granite or a medium grey granite, such as the 'Moss Green' granite used as a paving accent at the Memorial. This medium grey granite would provide a transition from the Memorial grounds to the 'park' landscape of Constitution Gardens.



Circle of Remembrance from Constitution Gardens pathway



'Kershaw' granite wall and benches at WWII Memorial



Detail of chamfered edge

WW II Memorial Material Precedents

Paving and Metalwork

The updated design for the Circle of Remembrance includes new granite paving within the 'circle' itself. The paving design will also take cues from the WWII Memorial in terms of material and pattern.

The concepts for the D-Day Prayer Memorial propose an inscription on a bronze plaque to provide legibility for visitors and to allow for long-term maintenance by the National Park Service. The plaque will be embedded or similarly attached to a granite tablet or wall, depending on the concept selected. The finish or patina of the bronze plaque will be consistent with elements present at the WWII Memorial.

Materials Key

- ① 'Kershaw' granite (vertical elements)
- ② 'Greene County' granite (primary paving material)
- ③ 'Moss Green' granite (frame paving accent)
- ④ 'Rio Verde' granite (center medallian paving accent)



Paving pattern at the Rainbow Pool edge, WWII Memorial



Paving pattern detail showing four types of stone used at WWII Memorial



Various bronze details from the WWII Memorial