

# NCPC File 7727: President Franklin D. Roosevelt Prayer Plaque

World War II Memorial

---

Submitted by the National Park Service

Concept Review

**Commission meeting date:** July 13, 2017

**NCPC review authority:** Commemorative Works Act (40 U.S.C. 8905) & Public Law 113-123

**Applicant request:** Concept Review

**Delegated / consent / open / executive session:** Open

**NCPC Review Officer:** M. Spigle

**NCPC File number:** 7727

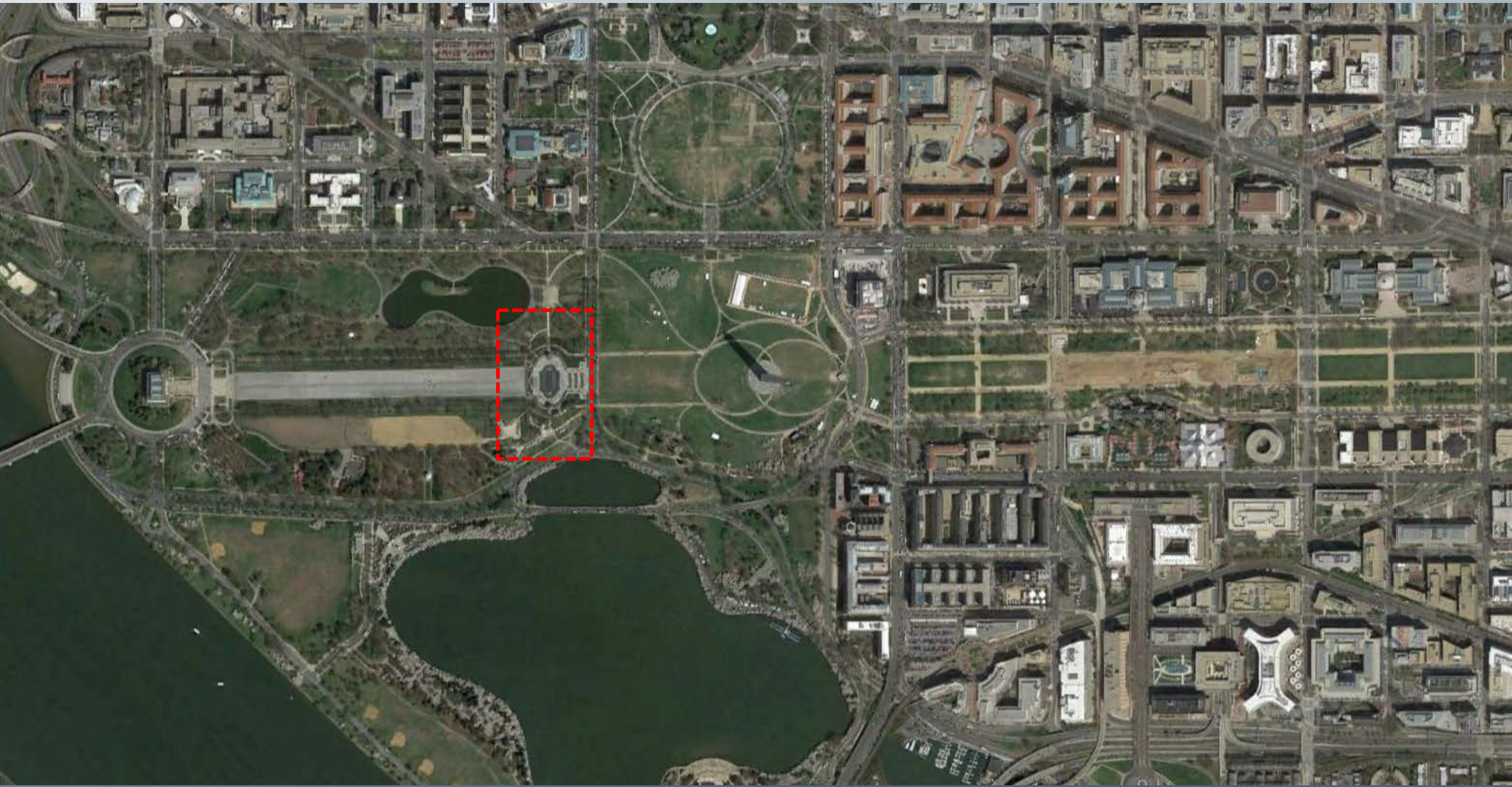
**Project summary:**

Public Law 113-123 authorized placement of a plaque or inscription in the vicinity of the World War II Memorial with the words that President Franklin D. Roosevelt prayed with the United States on D-Day, June 6, 1944. The Commemorative Works Act sets forth approval requirements related to the design and placement of the plaque. In accordance with the CWA, NCPC approves site and design for new commemorative works.

The National Park Service (Department of the Interior) on behalf of the Friends of the World War II Memorial, is submitting two design alternatives at the Circle of Remembrance, to the National Capital Planning Commission for concept review. In December 2016, the Commission supported design Alternative II, which located a free-standing plaque in a manner that completed the geometric form of the circle. In November 2015, the Commission commented favorably on the Circle of Remembrance (Site A) for the location of the prayer plaque.

CFA reviewed the proposed design concept on June 15, 2017 and commented favorably on Scheme B. In November 2016, the CFA supported design Alternative II. On October 15, 2015 the U.S. Commission of Fine Arts provided comments on the site study. On September 14, 2015 the National Capital Memorial Advisory Commission provided comments on the site study. These comments will be included in the record.











## PRAYER WITH THE NATION

ALMIGHTY GOD: OUR SONS, PRIDE OF OUR NATION, THIS DAY HAVE SET UPON A MIGHTY ENDEAVOR, A STRUGGLE TO PRESERVE OUR REPUBLIC, OUR RELIGION, AND OUR CIVILIZATION, AND TO SET FREE A SUFFERING HUMANITY.

LEAD THEM STRAIGHT AND TRUE; GIVE STRENGTH TO THEIR ARMS, STOUTNESS TO THEIR HEARTS, STEADFASTNESS TO THEIR FAITH.

THEY WILL NEED THY BLESSINGS. THEIR ROAD WILL BE LONG AND HARD. THE ENEMY IS STRONG. HE MAY HURL BACK OUR FORCES. SUCCESS MAY NOT COME WITH RUSHING SPEED, BUT WE SHALL RETURN AGAIN AND AGAIN; AND WE KNOW THAT BY THY GRACE, AND BY THE RIGHTEOUSNESS OF OUR CAUSE, OUR SONS WILL TRIUMPH.

THEY WILL BE SORE TRIED, BY NIGHT AND BY DAY, WITHOUT REST – TILL THE VICTORY IS WON. THE DARKNESS WILL BE RENT BY NOISE AND FLAME. MEN'S SOULS WILL BE SHAKEN WITH THE VIOLENCES OF WAR.

THESE MEN ARE LATELY DRAWN FROM THE WAYS OF PEACE. THEY FIGHT NOT FOR THE LUST OF CONQUEST. THEY FIGHT TO END CONQUEST. THEY FIGHT TO LIBERATE. THEY FIGHT TO LET JUSTICE ARISE, AND TOLERANCE AND GOOD WILL AMONG THY PEOPLE. THEY YEARN BUT FOR THE END OF BATTLE, FOR THEIR RETURN TO THE HAVEN OF HOME.

SOME WILL NEVER RETURN. EMBRACE THESE, FATHER, AND RECEIVE THEM, THY HEROIC SERVANTS, INTO THY KINGDOM.

AND FOR US AT HOME ~ FATHERS, MOTHERS, CHILDREN, WIVES, SISTERS, AND BROTHERS OF BRAVE MEN OVERSEAS ~ WHOSE THOUGHTS AND PRAYERS ARE EVER WITH THEM - HELP US ALMIGHTY GOD, TO REDICATE OURSELVES IN RENEWED FAITH IN THEE IN THIS HOUR OF GREAT SACRIFICE.

MANY PEOPLE HAVE URGED THAT I CALL THE NATION INTO A SINGLE DAY OF SPECIAL PRAYER. BUT BECAUSE THE ROAD IS LONG AND THE DESIRE IS GREAT, I ASK THAT OUR PEOPLE DEVOTE THEMSELVES IN CONTINUANCE OF PRAYER. AS WE RISE EACH NEW DAY, AND AGAIN WHEN EACH DAY IS SPENT, LET WORDS OF PRAYER BE ON OUR LIPS, INVOKING THY HELP TO OUR EFFORTS.

GIVE US STRENGTH, TOO ~ STRENGTH IN OUR DAILY TASKS, TO REDOUBLE THE CONTRIBUTIONS WE MAKE IN THE PHYSICAL AND MATERIAL SUPPORT OF OUR ARMED FORCES.

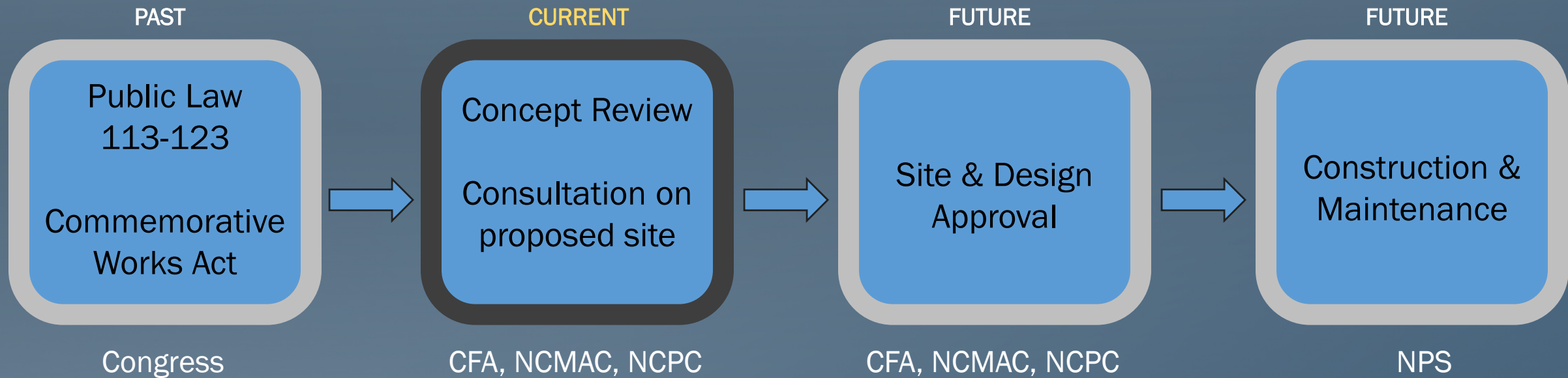
AND LET OUR HEARTS BE STOUT, TO WAIT OUT THE LONG TRAVAIL, TO BEAR SORROWS THAT MAY COME, TO IMPART OUR COURAGE UNTO OUR SONS WHERESOEVER THEY MAY BE.

AND, O LORD, GIVE US FAITH. FAITH IN THEE; FAITH IN OUR SONS; FAITH IN EACH OTHER; FAITH IN OUR UNITED CRUSADE. LET NOT THE KEENESS OF OUR SPIRIT EVER BE DULLED. LET NOT THE IMPACTS OF TEMPORARY EVENTS, OF TEMPORAL MATTERS OF BUT FLEETING MOMENT ~ LET NOT THESE DETER US IN OUR UNCONQUERABLE PURPOSE.

WITH THY BLESSING, WE SHALL PREVAIL OVER THE UNHOLY FORCES OF OUR ENEMY. HELP US CONQUER THE APOSTLES OF GREED AND RACIAL ARROGANCIES. LEAD US TO THE SAVING OF OUR COUNTRY, AND WITH OUR SISTER NATIONS INTO A WORLD UNITY THAT WILL SPELL A SURE PEACE – A PEACE INVULNERABLE TO THE SCHEMINGS OF UNWORTHY MEN. AND A PEACE THAT WILL LET ALL MEN LIVE IN FREEDOM, REAPING THE JUST REWARDS OF THEIR HONEST TOIL.

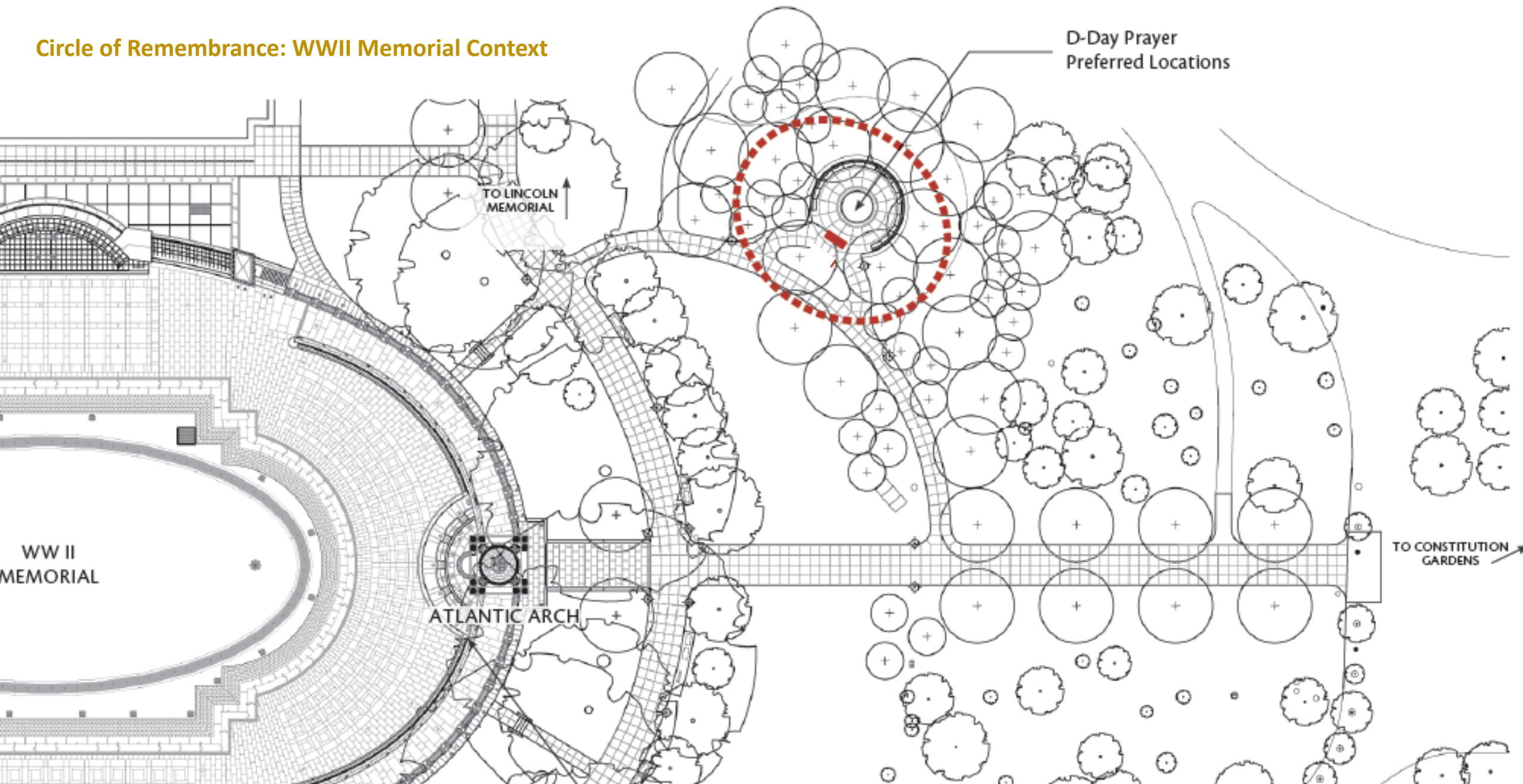
THY WILL BE DONE, ALMIGHTY GOD. AMEN.

PRESIDENT FRANKLIN DELANO ROOSEVELT  
WHITE HOUSE, WASHINGTON, DC  
EVENING - JUNE 06, 1944





## Circle of Remembrance: WWII Memorial Context



## Criteria for Evaluating the Design Alternatives

Several criteria were developed to evaluate the design alternatives for the D-Day Prayer Memorial within the Circle of Remembrance. The first four criteria listed below were carried forward from the Site Analysis because they are pertinent to locating the Prayer within the Circle of Remembrance site. The final four criteria were developed specifically to evaluate the aesthetics and visitor experience of the D-Day Prayer Memorial.

### Criteria for siting the D-Day Prayer Memorial within the Circle of Remembrance

#### *CONTEMPLATIVE CHARACTER*

The D-Day Prayer shall be sited to allow contemplation and reflection. Concepts for the Prayer shall preserve the contemplative character and purpose of the Circle, while allowing for quiet reflection and solemnity called for by the Prayer itself.

#### *VEGETATIVE SCREENING*

The D-Day Prayer shall be sited with consideration for preservation of existing mature vegetation and selective inclusion of new planting to provide a sense of comfortable enclosure and filter viewsheds to the bustling primary Memorial precinct.

#### *COMPATIBILITY WITH EXISTING CIRCULATION AND VISITATION PATTERNS*

The siting of the D-Day Prayer shall limit disturbance to the existing circulation patterns and shall not require additional walkways. In addition, the D-Day Prayer shall be sited so that visitors can easily locate it.

#### *EASE OF LONG-TERM MAINTENANCE*

The D-Day Prayer shall be designed and sited with consideration for long-term maintenance. The NPS has requested that the D-Day Prayer be inscribed in bronze rather than stone for ease of maintenance. Also, the D-Day Prayer shall be sited in a location where it can be elevated (and not flat on the ground) for ease of maintenance.

### Criteria for evaluating the design of the D-Day Prayer Memorial

#### *VISUAL CONNECTION WITH THE WWII MEMORIAL*

The D-Day Prayer shall be sited to allow visitors to have views of the WWII Memorial while reading the Prayer.

#### *ADHERENCE WITH ORIGINAL WWII MEMORIAL DESIGN INTENT*

The design of the D-Day Prayer presents an opportunity to more closely align the Circle of Remembrance with the WWII Memorial in material and character. The proposed concepts shall incorporate the granite and bronze used at the WWII Memorial.

#### *COMFORT AND LEGIBILITY*

The D-Day Prayer shall be inscribed or engraved in a size and location sufficient for legibility of the text and with enough space for visitors to gather while visiting the Prayer.

#### *ADHERENCE TO ORIGINAL INTENT / PRAYER FORMAT*

The text of the D-Day Prayer shall be displayed in a manner that is consistent with the tone and language of FDR's original delivery of the Prayer.

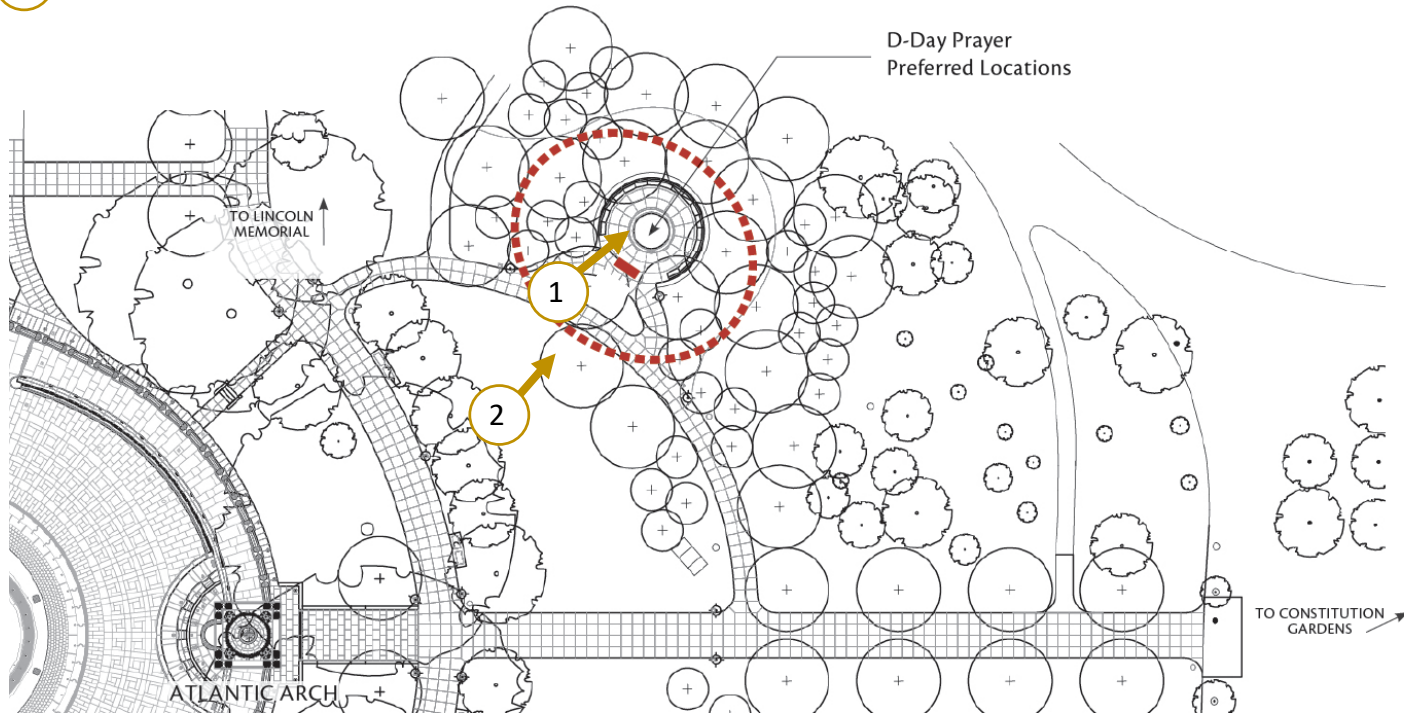




1 View into Circle, Constitution Gardens beyond



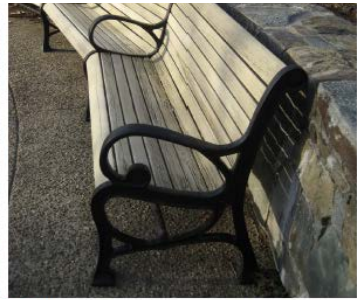
2 View from the lawn in front of the Circle of Remembrance



Concrete Paving



Granite Planter Curb ('Greene County' granite)



Wood Bench with Cast Iron Frame and Arm Rest



Fieldstone Wall



Trash Receptacle



Light Pole



D-Day Prayer Design Alternative II

Concept Description

This alternative ‘completes’ the Circle, placing the prayer on a curved granite wall within the bounds of the Circle’s circumference. Similarly to Alternative I, The Prayer is inscribed onto a bronze plaque that is placed on top of the wall. The wall is approximately 2.5’ tall, 3.5’ wide and 14’ long.

Panel Dimensions

FRANKLIN D. ROOSEVELT'S D-DAY PRAYER			
MY FELLOW AMERICANS IN THIS POIGNANT HOUR, I ASK YOU TO JOIN ME IN PRAYER.			
ALMIGHTY GOD: OUR SONS, PRIDE OF OUR NATION, THIS DAY HAVE SET UPON A MIGHTY ENDEAVOR, A STRUGGLE TO PRESERVE OUR REPUBLIC, OUR RELIGION, AND OUR CIVILIZATION, AND TO SET FREE A SUFFERING HUMANITY.	THESE ARE MEN LATELY DRAWN FROM THE WAYS OF PEACE, THEY FIGHT NOT FOR THE LUST OF CONQUEST, THEY FIGHT TO END CONQUEST, THEY FIGHT TO LIBERATE, THEY FIGHT TO LET JUSTICE ARISE, AND TOLERANCE AND GOOD WILL AMONG ALL THE PEOPLE THEY YEARN NOT FOR THE END OF BATTLE, FOR THEIR RETURN TO THE HEAVEN OF HOME.	MANY PEOPLE HAVE URGED THAT I CALL THE NATION INTO A SINGLE DAY OF SPECIAL PRAYER. BUT BECAUSE THE ROAD IS LONG AND THE STRUGGLE GREAT, I ASK THAT OUR PEOPLE DEVOTE THEMSELVES IN A CONTINUANCE OF PRAYER, AS WE RISE TO EACH NEW DAY, AND AGAIN WHEN EACH DAY IS SPENT, LET WORDS OF PRAYER BE ON OUR LIPS, INVOKING THY HELP TO OUR EFFORTS.	AND, O LORD, GIVE US FAITH, GIVE US FAITH IN THESE FAITH IN OUR SONS, FAITH IN EACH OTHER, FAITH IN OUR UNITED CRUSADE, LET NOT THE LIVENESS OF OUR SPIRIT EVER BE DULLED, LET NOT THE IMPACTS OF TEMPORARY EVENTS, OF TEMPORAL MATTERS OF BUT FLEETING MOMENT LET NOT THESE DETER US IN OUR UNCONQUERABLE PURPOSE.
LEAD THEM STRAIGHT AND TRUE, GIVE STRENGTH TO THEIR ARMS, STOUTNESS TO THEIR HEARTS, STRAIDFASTNESS IN THEIR FAITH.	SOME WILL NEVER RETURN, EMBRACE THESE, FATHER, AND RECEIVE THEM, THY BROTHERS SERVANTS INTO THY KINGDOM.	GIVE US STRENGTH, TOO - STRENGTH IN OUR DAILY TASKS, TO REDOUBLE THE CONTRIBUTIONS WE MAKE IN THE PHYSICAL AND THE MATERIAL SUPPORT OF OUR ARMED FORCES.	WITH THY BLESSING, WE SHALL PREVAIL, OVER THE UNHOLY FORCES OF OUR ENEMY, HELP US TO CONQUER THE APOSTLES OF GREED AND RACIAL ARROGANCIES, LEAD US TO THE SAVING OF OUR COUNTRY, AND WITH OUR SISTER NATIONS INTO A WORLD UNITY THAT WILL SPELL A SURE PEACE, A PEACE INVULNERABLE TO THE SCHEMINGS OF UNWORTHY MEN, AND A PEACE THAT WILL LET ALL OF MEN LIVE IN FREEDOM, REAPING THE JUST REWARDS OF THEIR HONEST TOIL.
THEY WILL NEED THY BLESSINGS, THEIR ROAD WILL BE LONG AND HARD, FOR THE ENEMY IS STRONG, HE MAY HURL BACK OUR FORCES, SUCCESS MAY NOT COME WITH RUSSHO SPEED, BUT WE SHALL RETURN AGAIN, AND AGAIN, AND WE KNOW THAT BY THY GRACE, AND BY THE RIGHTNESS OF OUR CAUSE, OUR SONS WILL TRUMPH.	AND FOR US AT HOME - FATHERS, MOTHERS, CHILDREN, WIVES, SISTERS, AND BROTHERS OF BRAVE MEN OVERSEAS - WHOSE THOUGHTS AND PRAYERS ARE EVER WITH THEM - HELP US, ALMIGHTY GOD, TO REDEDICATE OURSELVES IN REVIVED FAITH IN THESE IN THIS HOUR OF GREAT SACRIFICE.	AND LET OUR HEARTS BE STOUT, TO WAIT OUT THE LONG TRAVAIL, TO BEAR SORROWS THAT MAY COME TO IMPART OUR COURAGE UNTO OUR SONS WHERESOEVER THEY MAY BE.	THY WILL BE DONE, ALMIGHTY GOD.  AMEN.

Alternative II: Four Panel plaque







## D-Day Prayer Design Alternative II

Design Alternative II was selected as a preferred concept because it emphasizes the 'circular' form of the Circle of Remembrance and creates a strong visual connection with the WWII Memorial. This alternative would provide additional enclosure for the Circle, while creating a defined threshold.



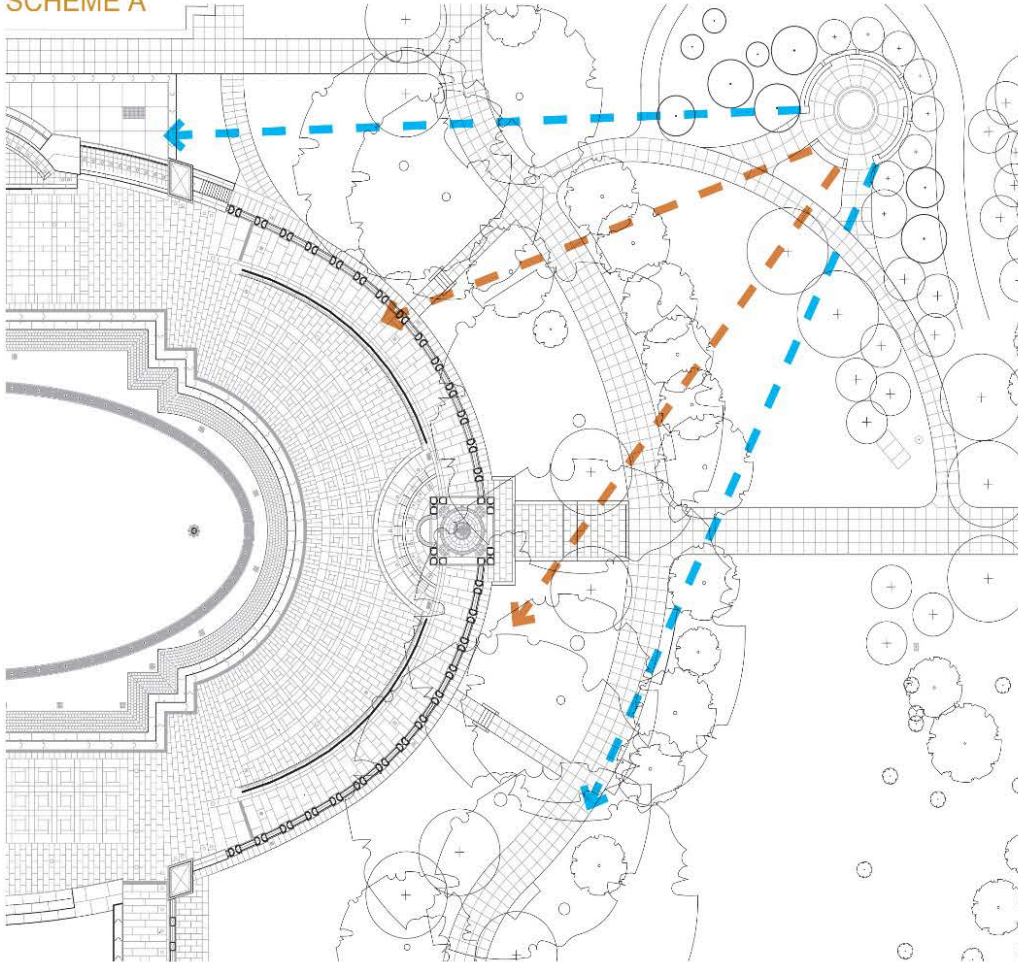


-  Circle of Remembrance orientation
-  D-Day Prayer Plaque viewed

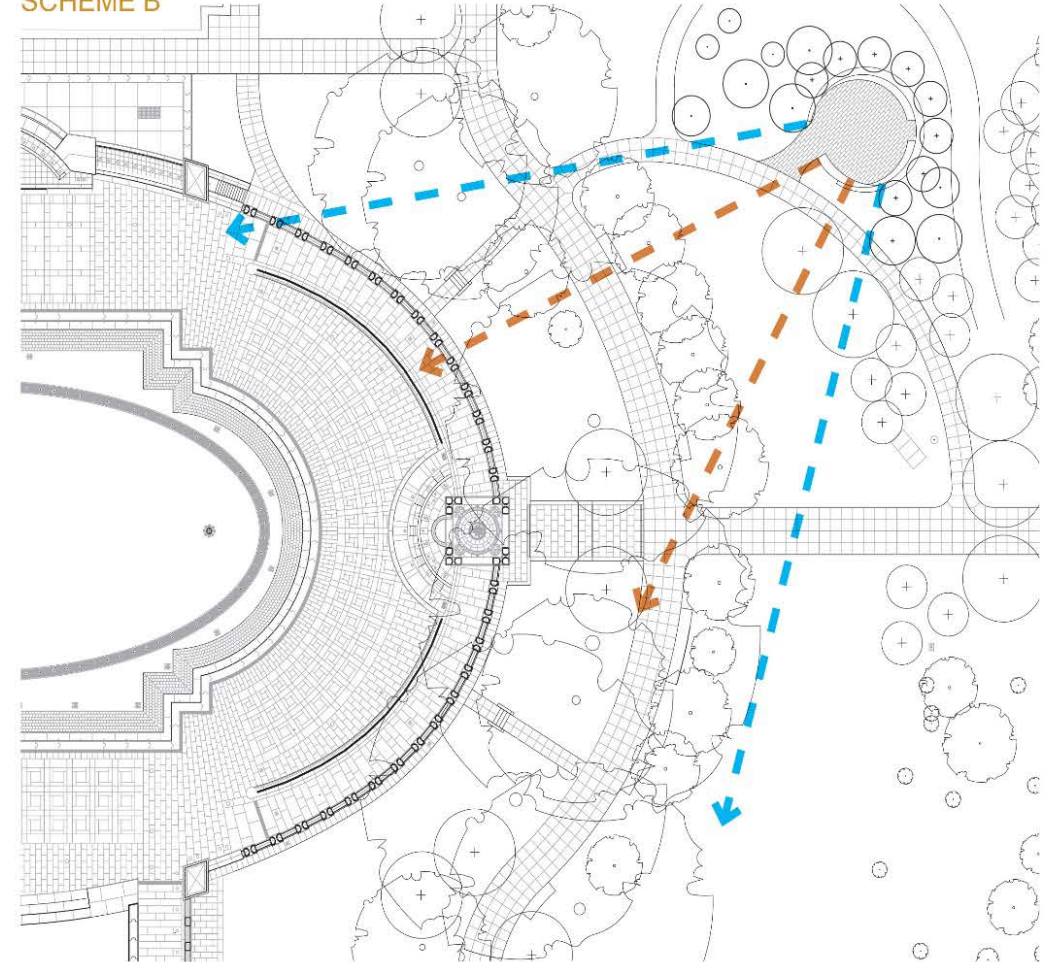
## WWII Memorial Context

Both of the proposed schemes align the Prayer with views of the WWII Memorial, providing the desired orientation and viewshed. Scheme A maintains the existing Circle location and path layout, allowing the Prayer to be a discrete element within the circumference of the Circle. Scheme B maintains the footprint of the Circle, but reorients and shifts its location to allow the Prayer to become a cohesive extension of its geometry.

### SCHEME A



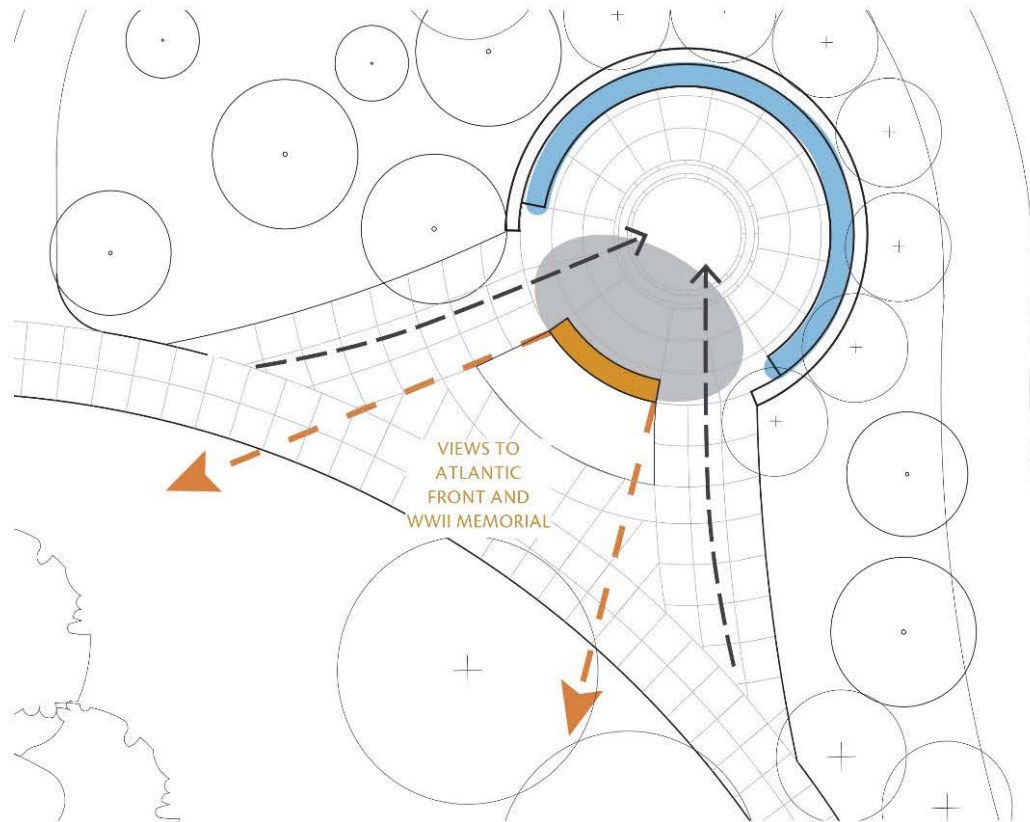
### SCHEME B



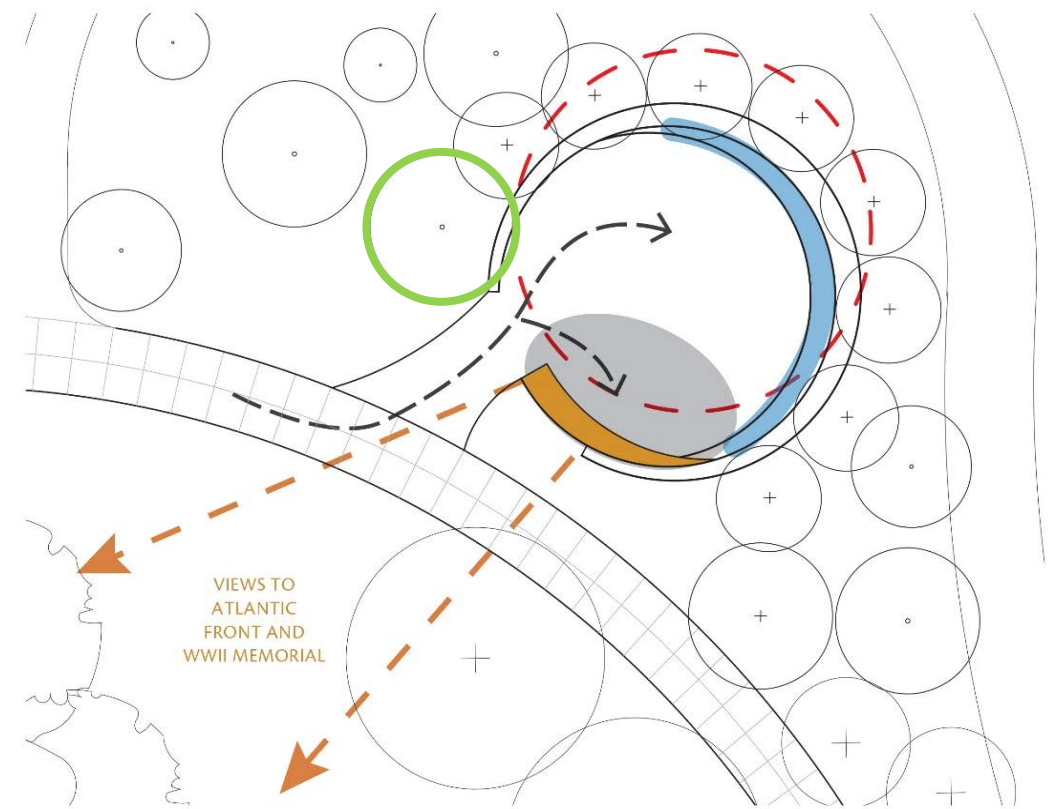
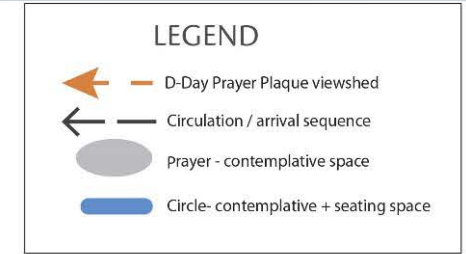


## Establishing an arrival sequence and contemplative space

The next scheme arose from the desire to join the Circle of Remembrance with the Prayer plaque through one cohesive gesture. This scheme also endeavors to enhance the contemplative experience of the Circle and Prayer through a revised entry sequence. The diagrams which follow present the conceptual grounding and methodology for Scheme B.



**DIAGRAM I | Existing Orientation and Viewshed:** In Scheme A the Prayer plaque is centered within the circumference of the circle, with paths on either side. This placement could expose readers of the Prayer to traffic coming in and out, reducing the 'contemplative' nature of this experience.



**DIAGRAM IV | MOVING the Circle:** In order to provide the desirable orientation, a pleasing arrival sequence, and maintain existing trees, the Circle is moved closer to the existing path, minimizing the extent of paving and improving the layout of the walkway. At the same time, this allows sufficient low planting in front of the Prayer to buffer the contemplative experience and maintain views to the WWII Memorial.



## D-Day Prayer Scheme A

### Concept Description

This scheme develops the previous concept by 'punctuating' the wall with gaps and allowing the Prayer to be a 'free-standing' element that is lighter and not embedded in stone. At the same time, this proposal maintains the existing symmetrical pathways and relates closely with the design language of the WWII Memorial. The Prayer remains a distinct element within the circumference of the Circle, separated by circulation on either side.

This scheme provides the following capacity for gathering and seating:

- Seating capacity - 33, including 4 wheelchair spaces (based on 21" per seat)
- Gathering space - 51 people (based on IBC 2012 code for classrooms of 20 SF/person)
- Standing room capacity - 205 people (based on IBC 2012 code for gathering of 5 SF/person)





## D-Day Prayer Scheme A

**View to WWII Memorial** In this scheme, the Prayer is a free-standing element within the circumference of the Circle of Remembrance. The bronze plaque is held by two granite pillars, providing material continuity with the walls but allowing for a lighter feeling. Planting beyond the Prayer provides a green backdrop that reinforces the form of the Circle without obscuring views beyond.









## D-Day Prayer Scheme B

### Concept Description

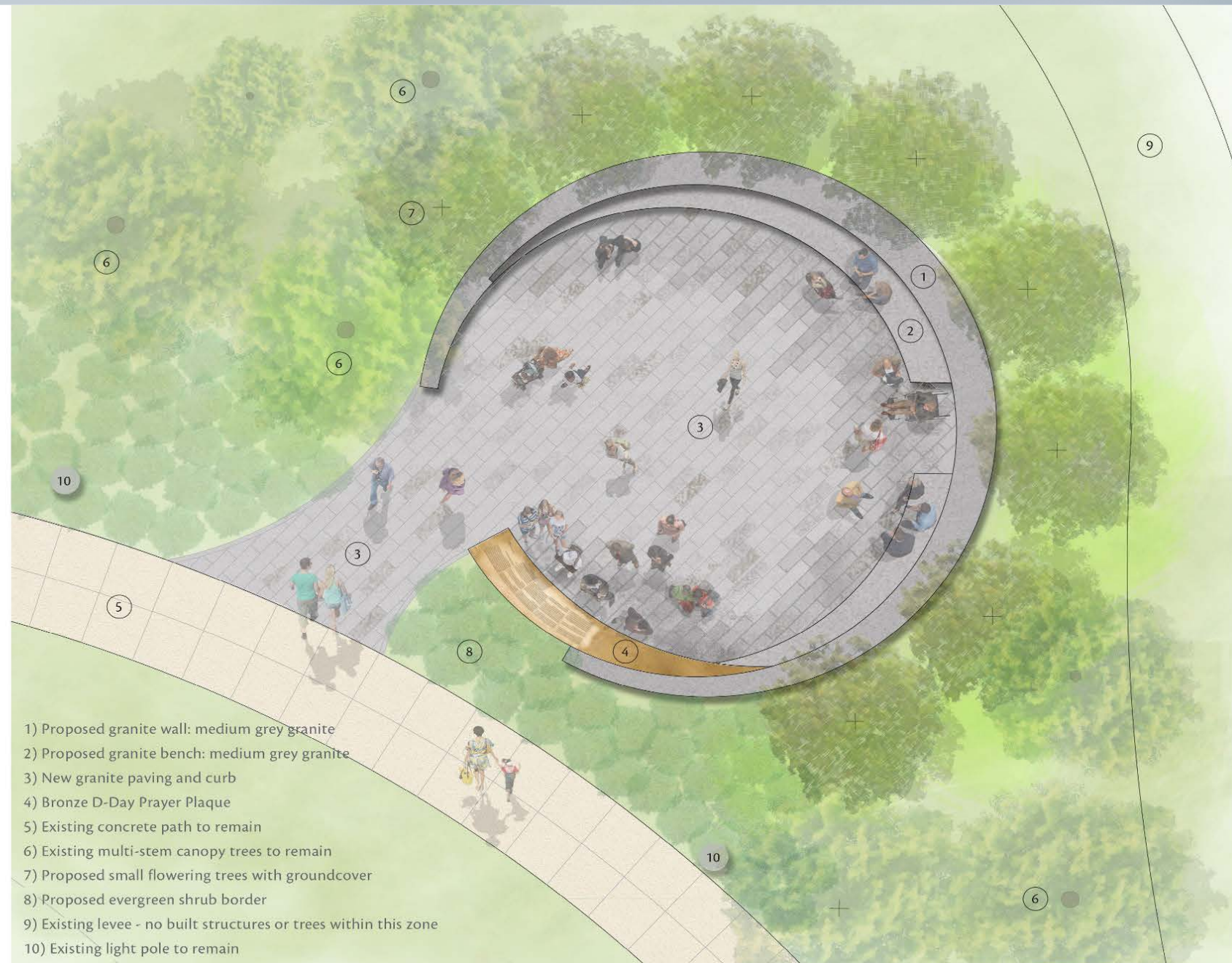
This scheme develops the previous concept through a unified, sculptural gesture that encompasses the retaining wall, bench, and the Prayer itself.

The bench is cantilevered from the circular wall to create lightness and emphasize the overall gesture. Similarly, the Prayer is an extension of the circular wall, overlapping with the curving bench, and providing an elegant transition. This treatment allows for greater transparency both into the Circle and outward, towards the Memorial.

In this proposal, the Circle of Remembrance is rotated and shifted to allow the Prayer plaque to be oriented towards the WWII Memorial, while allowing for circulation on the edge of the space, rather than into the center.

This scheme provides the following capacity for gathering and seating:

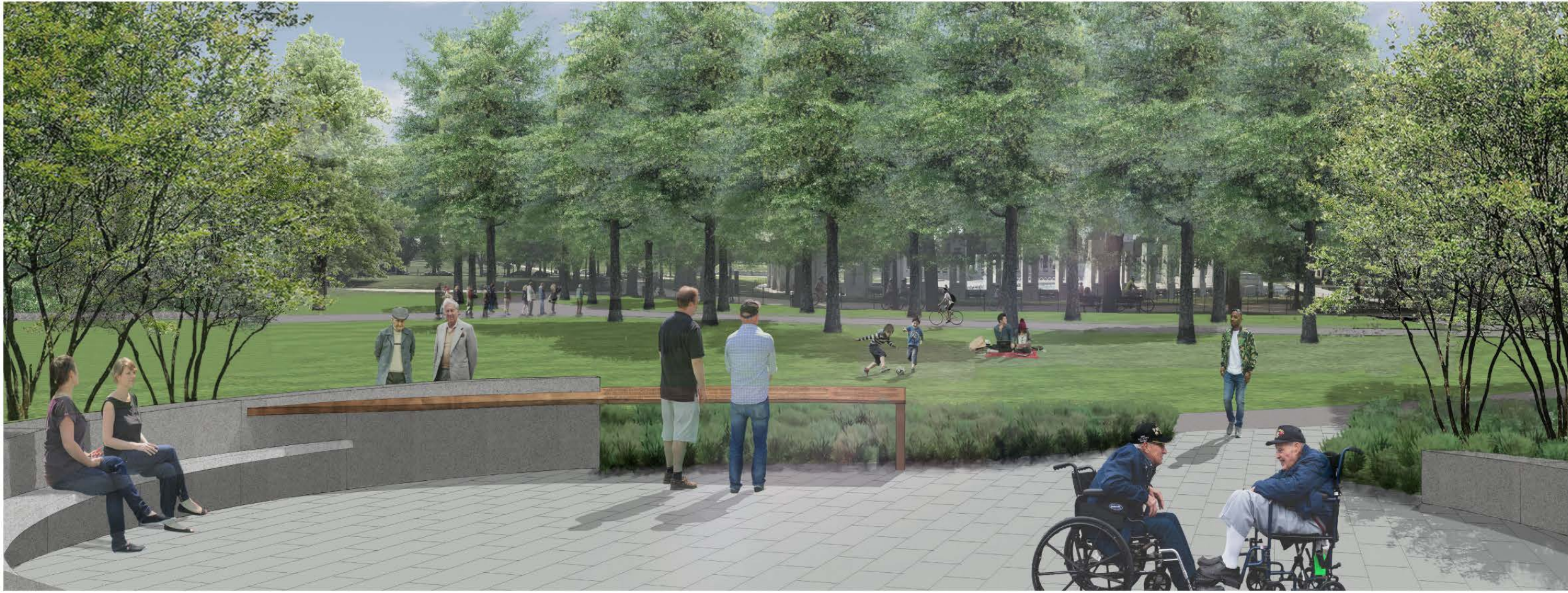
- Seating capacity - 25, including 2 wheelchair spaces (based on 21" per seat)
- Gathering space - 49 people (based on IBC 2012 code for classrooms for 20 SF/person)
- Standing room capacity - 196 people (based on IBC 2012 code for gathering for 5 SF/person)





## D-Day Prayer Scheme B

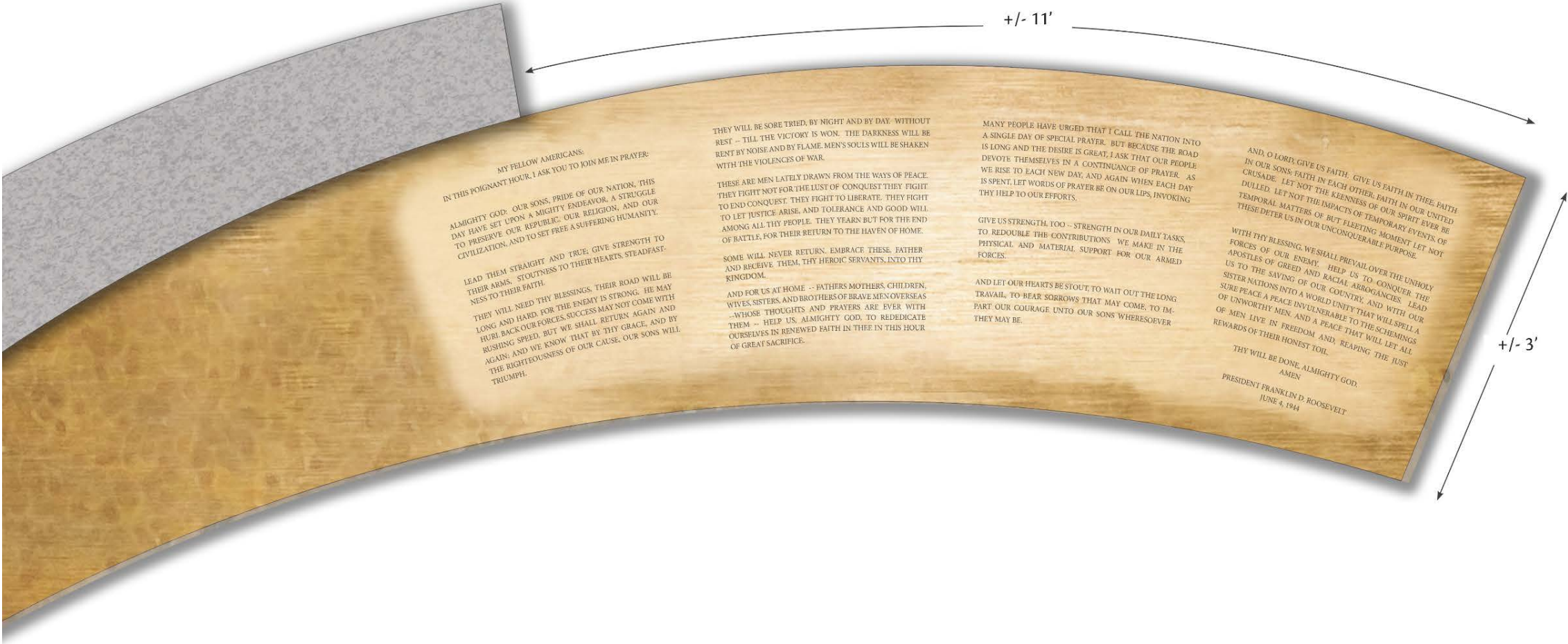
**View to WWII Memorial** In this scheme, the Prayer is a quiet extension of the overall gesture of the Circle of Remembrance. At the same time, it orients and frames visitors to the WWII Memorial. Planting beyond the Prayer provides a green backdrop that reinforces the form of the Circle without obscuring views beyond.













## D-Day Prayer Planting Design

### Concept Description

The planting design is intended to emphasize the form of the space, encircling the walls with small, multi-stem flowering trees that provide a sense of enclosure and filtered views towards Constitution Gardens. This proposal also incorporates existing trees, taking advantage of their established scale and shade.

Existing and proposed trees are underplanted with hardy groundcovers that will provide yearlong greenery with minimal maintenance. To provide seasonal interest, a mix of spring and summer bulbs are interspersed throughout the groundcover. The inclusion of white flowers also references a beautiful but unrealized vision for a 'floral memorial' symbolizing peace and honoring the fallen and their families.

At the Circle's entry, an evergreen threshold of low, hardy shrubs frames views in and out of the Circle, while providing seasonal interest through fruit and fall color.

### Potential species

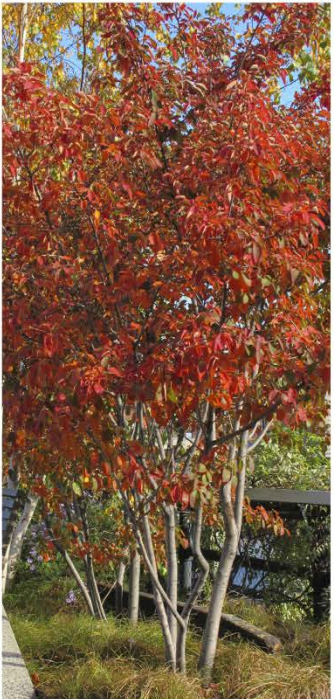
The following images are representative of initial species being considered. The final plant selection will be developed in concert with Friends of the WWII Memorial and the National Park Service to ensure consistency with the design vision, fulfillment of maintenance requirements, and consideration of the plant palette of the Memorial and National Mall context.



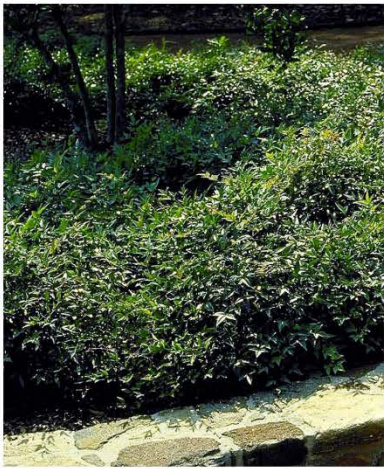
Existing multi-stem canopy trees: *Chionanthus retusus*



Proposed trees: *Amelanchier grandiflora* 'Autumn Brilliance'



Proposed trees: *Amelanchier grandiflora* 'Autumn Brilliance'



Proposed evergreen shrub/groundcover: *Nandina domestica* 'Harbor Dwarf'



Proposed shrub: *Hydrangea quercifolia* 'Sikes Dwarf' | Oakleaf Hydrangea



Proposed groundcover: *Epimedium x versicolor* 'Sulphurum'



Proposed bulbs: White narcissus, Snow drops species TBD



## WW II Memorial Material Precedents

### Materiality and Design Intent

The proposed concepts for the FDR D-Day Prayer are designed to be consistent materially and aesthetically with the WWII Memorial.

### Benches

The benches at the WWII Memorial are comprised of light grey 'Kershaw' granite with gently rounded edges. The walls and benches at the Circle of Remembrance and the FDR D-Day Prayer would reflect this design language.

The material of the new walls and benches could be the same 'Kershaw' granite or a medium grey granite, such as the 'Moss Green' granite used as a paving accent at the Memorial. This medium grey granite would provide a transition from the Memorial grounds to the 'park' landscape of Constitution Gardens.



Circle of Remembrance from Constitution Gardens pathway



'Kershaw' granite wall and benches at WWII Memorial



Detail of chamfered edge



## WW II Memorial Material Precedents

### Paving and Metalwork

The updated design for the Circle of Remembrance includes new granite paving within the 'circle' itself. The paving design will also take cues from the WWII Memorial in terms of material and pattern.

The concepts for the D-Day Prayer Memorial propose an inscription on a bronze plaque to provide legibility for visitors and to allow for long-term maintenance by the National Park Service. The plaque will be embedded or similarly attached to a granite tablet or wall, depending on the concept selected. The finish or patina of the bronze plaque will be consistent with elements present at the WWII Memorial.

#### Materials Key

- ① 'Kershaw' granite (vertical elements)
- ② 'Greene County' granite (primary paving material)
- ③ 'Moss Green' granite (frame paving accent)
- ④ 'Rio Verde' granite (center medallian paving accent)



Paving pattern at the Rainbow Pool edge, WWII Memorial



Paving pattern detail showing four types of stone used at WWII Memorial



Various bronze details from the WWII Memorial