

Visitor Use Management Plan

Summer 2017

National Park Service
U.S. Department of the Interior

Eisenhower National Historic Site
Pennsylvania



Message From the Superintendent

Dear Friends,

I am excited to share with you that the National Park Service (NPS) is beginning the public involvement phase of our planning for future visitor access and use of the Eisenhower National Historic Site. Please join us at the upcoming public scoping meeting outlined on page 3.

Eisenhower National Historic Site preserves the only home that President Dwight D. Eisenhower and First Lady Mamie Eisenhower ever owned. The Eisenhower home, farm, and adjacent lands have changed little since the site opened to the public in 1980. In an effort to quickly open the site to visitors and to preserve the site as it was during the Eisenhowers' occupancy, visitor access has been restricted to shuttle bus transportation from the Gettysburg Visitor Center. As early as 1982, the National Park Service (NPS) was concerned about mode of visitor access to the site and how it influenced the experience of the visitor.

The NPS is exploring whether alternative transportation services are still the best method of access to the Eisenhower Farm. The plan will be evaluating the benefits and impacts of alternative transportation and onsite parking as modes of visitor access to the site. It will also be evaluating how visitors use the site once they have arrived.

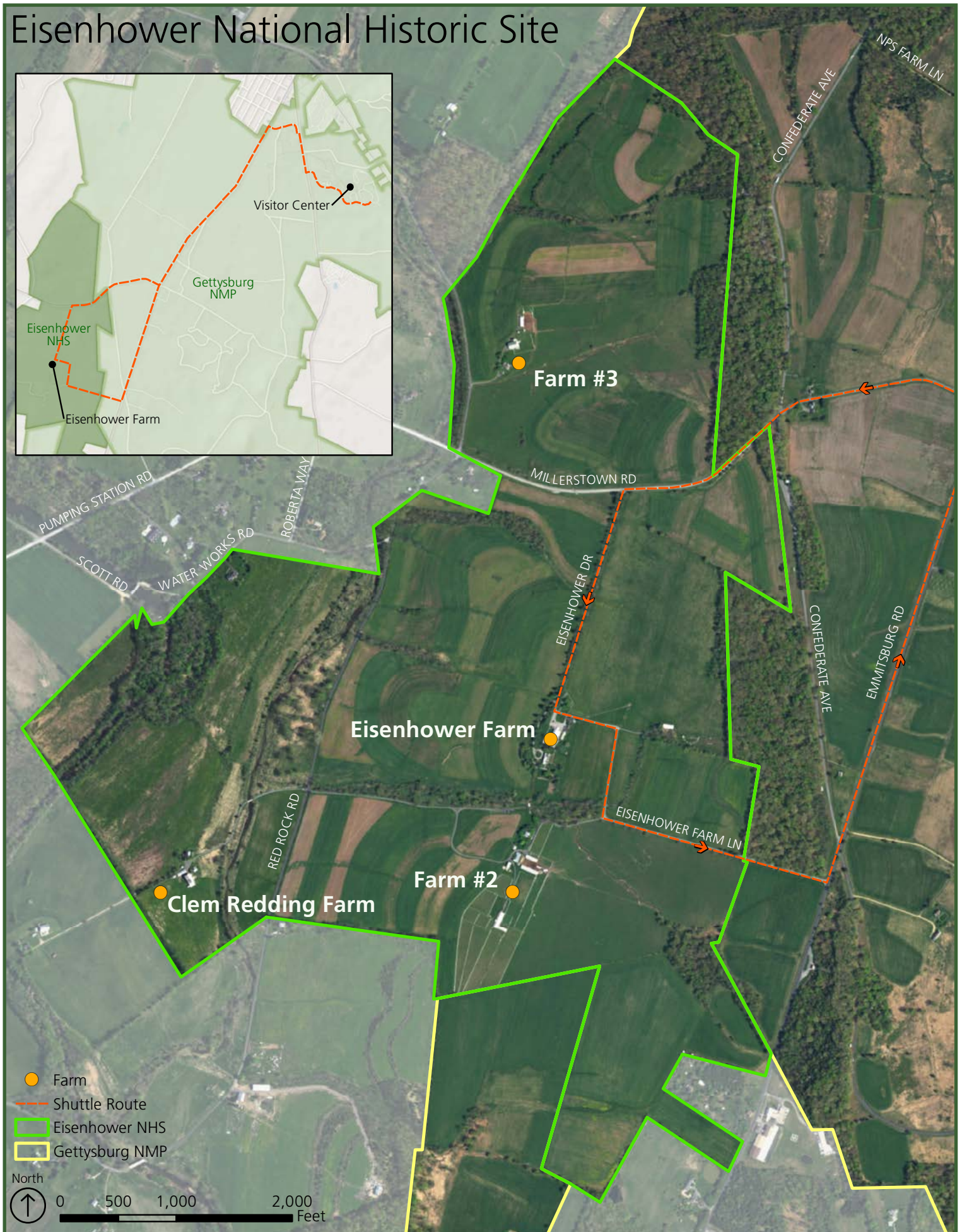
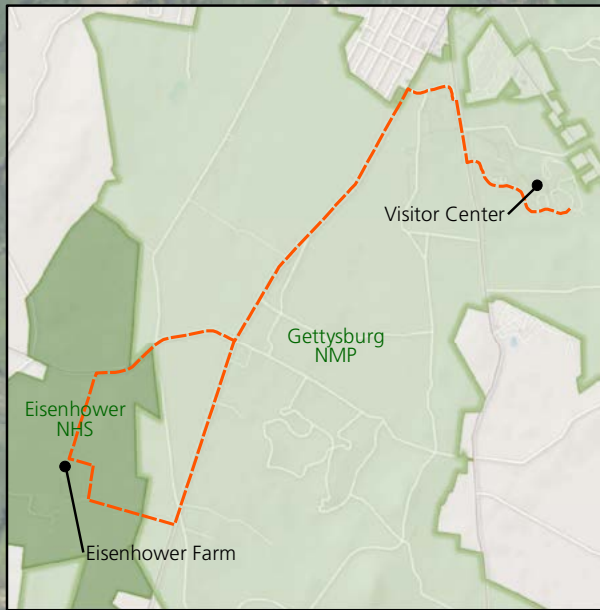


Please take a moment to help us find a way to improve your experience touring the site in a manner that allows us to meet our stewardship responsibilities to preserve and protect this national treasure for future generations.

Sincerely,

William T. Justice
Acting Superintendent
Gettysburg National Military Park
Eisenhower National Historic Site

Eisenhower National Historic Site





Listening Sessions for the Visitor Use Management Plan

The National Park Service (NPS) is undertaking a listening session process as an initial step in the development of a visitor use management plan (the plan) for Eisenhower National Historic Site (the park). The purpose of the plan is to maximize the ability of the National Park Service to encourage access and protect the park's natural and cultural resources. The planning process will examine current and potential visitor opportunities and develop long-term strategies for providing access and connecting visitors to important experiences.

We encourage you to get involved with the process and add your voice to the visitor use planning for the park. The National Park Service will host a listening session and will be providing information on the park to spread the word about this important effort. This is the beginning of the input process, and there will be future opportunities to provide additional input. You can find out more at <https://www.facebook.com/EisenhowerNPS> or <https://www.nps.gov/eise/getinvolved/index.htm>

You are invited...

Please attend our Listening Session:

Thursday, July 27, 2017
6:30 p.m. – 8:30 p.m.

Ford Education Room
 Museum and Visitor Center
 Gettysburg National Military Park
 1195 Baltimore Pike
 Gettysburg, PA 17325





Plan Goals

The goal of the visitor use management plan is to establish a vision for the future of visitor experiences by evaluating and determining appropriate access, visitor services and interpretive opportunities, and protecting the cultural integrity of the site. The National Park Service intends to develop a plan that promotes relevancy, builds constituency, and provides sustainable access and opportunities. This plan will evaluate a range

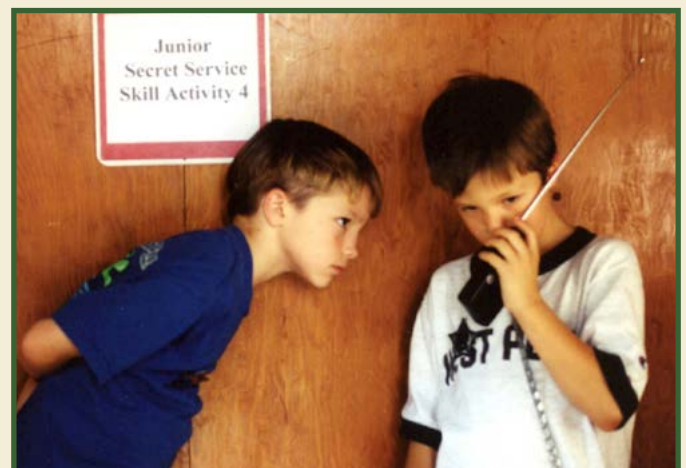
of improved and new visitor uses in a manner consistent with the purpose and significance of the park.

For more information on the purpose, significance, and fundamental resources and values of the park, please see the park's foundation document at: https://www.nps.gov/eise/learn/management/upload/EISE_FD_SP.pdf

Key Issues

This plan is being initiated to help establish a vision for the future of visitor experiences at the park by addressing:

- Visitor access, wayfinding, parking, and related design;
- Visitor opportunities and how they could be expanded, including around the Eisenhower home;
- Visitor experiences consistent with the Eisenhowers' values and the site's resource protection goals.



Planning Process and Timeline

WE
ARE
HERE

Schedule	Milestone	Planning Effort
Summer 2017	Scoping	Public scoping begins July 17 and ends August 21, 2017 Public Scoping Meeting: Gettysburg Visitor Center July 27, 2017
Fall and Winter 2017	Management Alternatives	NPS staff review public scoping comments NPS staff develop management alternative
Spring 2018	Draft Plan	NPS staff analyze management alternative impacts and write an environmental assessment for public review
Summer 2018	Public Review	Visitor use management plan and environmental assessment released; public meetings and comment period (30 days)
Fall 2018	Decision Document	NPS prepares a Decision Document that identifies the alternative to be implemented





How You Can Be Involved

The National Park Service welcomes your input in helping us understand how you experience Eisenhower National Historic Site. We are interested in understanding the following:

ACCESS... Do you see any issues regarding access to Eisenhower National Historic Site? Does the current transportation infrastructure at the site differ from how you would prefer to be arriving at and moving around the site?

EXPERIENCES... What experience(s) do you value or want to have at Eisenhower National Historic Site?

SERVICES... Are there additional visitor services you feel Eisenhower National Historic Site should provide?

SHARE YOUR IDEAS... Do you have any other thoughts on visitor opportunities or the management of Eisenhower National Historic Site that you think the planning team should consider?





Join the Conversation

As an integral part of the planning process, the National Park Service is asking for your input. Broad public participation will help shape the plan by giving us a better understanding of our visitors and their experiences, preferences, and needs. It can also help us identify existing or new opportunities to meet those needs while also achieving our mission to preserve and protect resources.

Public “scoping” is the first step in the planning process where the public is asked to identify opportunities and concerns to help the park focus its analysis on important issues. The information on back describes how you can get involved in scoping and provide input.





How to Comment

Your thoughts are important to us. There are three ways to submit your comments:

1. Submit comments electronically (*preferred method*): www.parkplanning.nps.gov/eise
2. Submit by U.S. Mail: please fill out the enclosed (postage-paid) comment form, fold, tape closed, and mail back.
3. Hand-deliver to the Gettysburg NMP Museum and Visitor Center Information Desk:
Eisenhower National Historic Site
1195 Baltimore Street, Suite 100
Gettysburg, PA 17325

Questions?

Learn more about Eisenhower National Historic Site online, via the websites below:

go.nps.gov/eise

www.nps.gov/eise

www.facebook.com/EisenhowerNPS

You can also contact us directly via email, U.S. Mail, or telephone:

email: eise_public_comments@nps.gov

Eisenhower National Historic Site

1195 Baltimore Street, Suite 100

Gettysburg, PA 17325

Phone: (717) 338-9114

*Thank you for your interest in the Planning Process for the
Visitor Use Management Plan for Eisenhower National Historic Site!*