

Youngsholm Cultural Landscape Report, Environmental Assessment, and Schematic Design



QUINN EVANS
ARCHITECTS



Public Open House

Charles Young Buffalo Soldiers National Monument

Wilberforce, Ohio - Wednesday, June 21, 2017



Youngsholm

Cultural Landscape Report & Environmental Assessment

Welcome

– Dr. Joy Kinard, Superintendent of Charles Young Buffalo Soldiers National Monument, NPS

Introduction to the Youngsholm CLR and EA Process

– Marla McEnaney, Historical Landscape Architect, NPS

Landscape History, Existing Conditions, Integrity, Treatment Alternatives & Recommendations

– Greg De Vries, Historical Landscape Architect, Quinn Evans Architects

Discussion



- ↓ Start Up and Base Mapping (July 2016)
- ↓ Open House and Field Investigations (Aug. 2016)
- ↓ CLR Part 1 / EA - 75% Draft (Dec. 2016)
 - Introduction
 - Site History
 - Existing Condition/Affected Environment & Analysis of Landscape Integrity
- ↓ Landscape Alternatives Workshop (Feb.)
- ↓ CLR Parts 1 and 2 / EA - 95% Draft (April)
 - Recommended Landscape Treatment
 - Implementation Guidance and Environmental Consequences
- ↓ Open House (June)
- ↓ CLR / EA for Public Review - 95% Draft (June/July)
- ↓ CLR /EA and Finding of No Significant Impact/Record of Decision for NPS Review - 100% Draft (Sept.)
- ❑ Final CLR/EA (Oct.)
- ❑ Final Schematic Design and Cost Estimates (Nov. - Jan.)





Landscape Significance

The vernacular landscape reflects the values of Charles Young's family as they developed a homestead and farm from 1907 to 1922 in Wilberforce, Ohio.

Site History Overview

- Landscape Origins
- American Settlement 1783-1906
- Youngsholm Development 1907-1922
- Youngsholm Transformation 1923-2012
- Youngsholm Renewal 2013-2017





Landscape Origins

- American Indian groups including Adena, Hopewell, Fort Ancient, Shawnee, and others since 13,000 BC
- Early surveys record trees including oak, elm, hickory, dogwood

American Settlement 1783-1906

- 1780s Virginia Military Survey, 1804 site survey
- 1833 land cleared for agriculture
- 1839 brick house
 - Pattern of the domestic and farm landscapes established
 - Deliberate tree plantings including black locust and maple
 - Additional information in the 2013 Historic Structure Report
- 1830s anti-slavery neighbors, Underground Railroad activity
- 1850 railroad alters use of Columbus Pike/US Route 42
- 1858-1877 Laura Smith farm
- 1864 Charles Young, born in Helena, Kentucky



Charles Young 1874, age 10





Youngsholm Development 1907-1922

- 1907-1915 initial development
 - Place of respite for Charles Young
 - Farm expansion, beatification, and tenant farmers
- 1916-1922 expansion and elaboration
 - Domestic life in the landscape
 - Numerous barns and outbuildings
 - Victorian garden features
 - Barnyard, pens, and chicken run
 - Vegetable garden, fruit trees





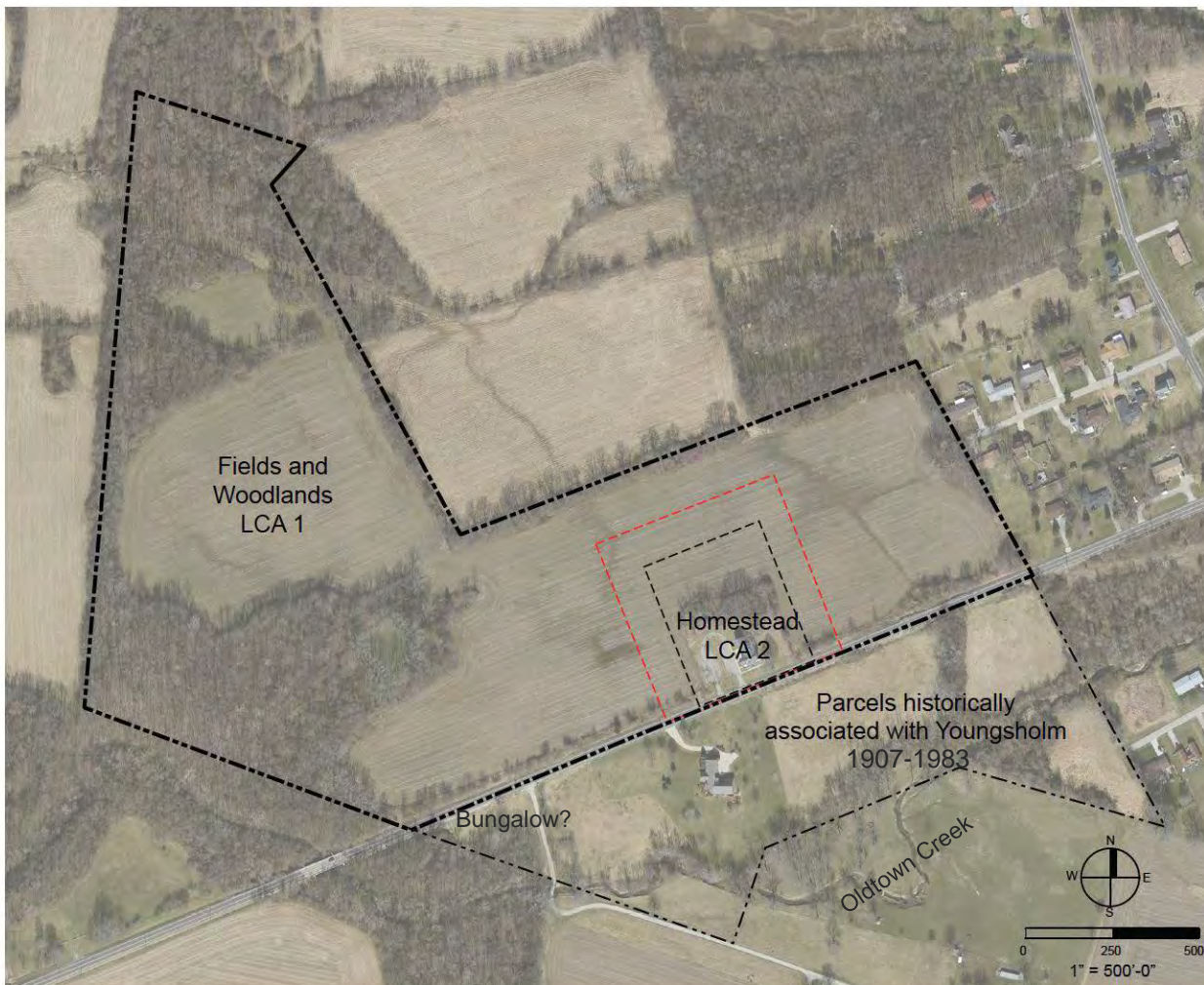
Youngsholm Transformation 1923-2012

- 1920s-1970 Young family residence with changed livelihoods
- 1950s-1960s Agricultural innovation by son, Charles Noel Young
- 1974 Xenia Tornado damage and National Historic Landmark
- 1983 Omega Psi Phi and north/south parcel division
- 1988 parking lot added

Youngsholm Renewal 2013-present

- 2013 National Monument declared





Legend

- National Monument boundary / study area
- Parcels historically associated with Youngsholm
- Homestead LCA
- NHL Boundary

National Monument

59.656 acres

Fields and Woodlands

57.656 acres

Homestead

2.0 acres

National Historic Landmark

4.0 acres (---)

South Outparcel

19.484 acres - private

Historic Youngsholm

79.14 acres





Fields and Woodlands

- Fields
- Woodlands
- Oldtown Creek
- Pond (est. 1958-1964)



Homestead

- Home grounds (---)
- House
- Parking
- Former farm (---)
- Pole barn





1922 Fields and Woodlands LCA

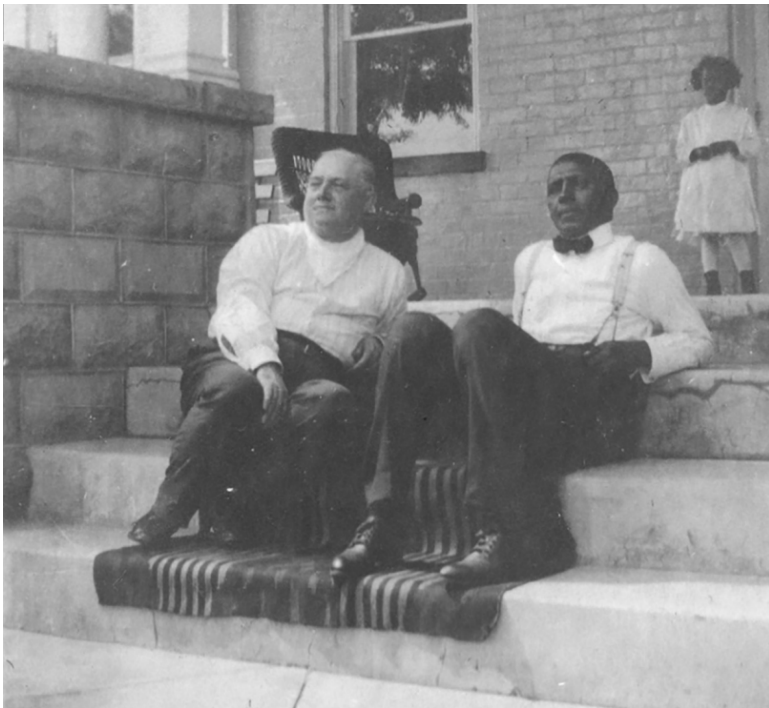
- Open fields with wooded edges
- Homestead and farm complex
- Views south toward rural setting



1922 Homestead LCA

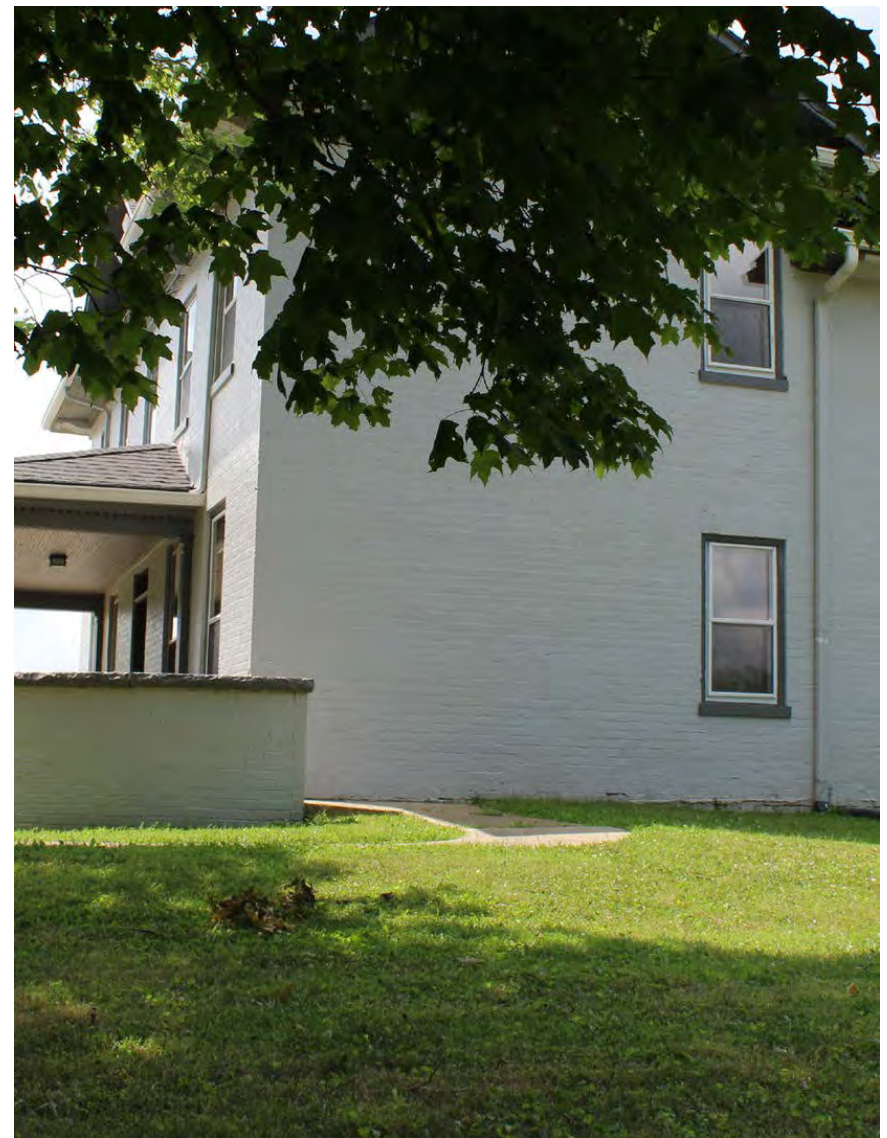
- Home grounds with front yard, west patio, domestic spaces
- Pens and chicken yard
- Barnyard
- Vegetable garden





Home grounds – front yard and social spaces





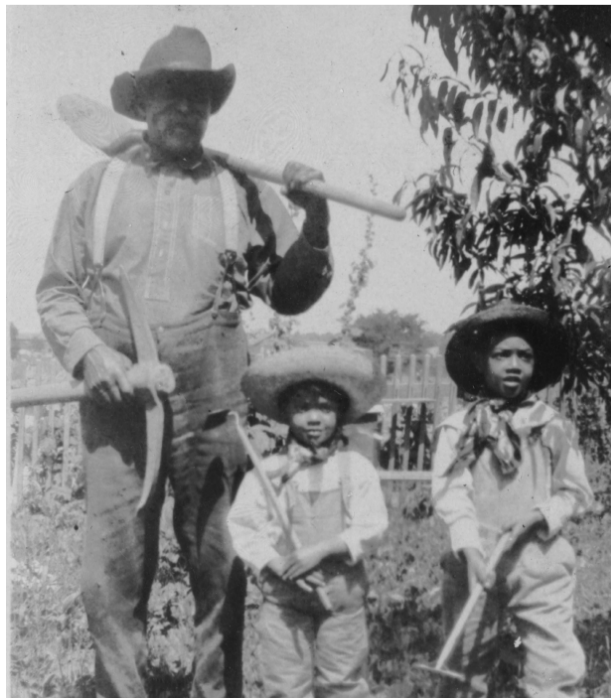
Home grounds – east yard beds and trees





Home grounds – west patio domestic areas





Farm – barnyard, pens,
and garden





Existing Condition Fieldwork


- Site survey and aerial photographs
- Assessment of physical conditions with a focus on historical features and management concerns
- Simultaneous comparisons with historic photographs and maps


Study of Landscape Characteristics

- Spatial Organization, Land Patterns, and Land Use
- Natural Systems and Topography
- Views
- Vegetation
- Circulation
- Buildings, Structures, and Utilities
- Water Features
- Small Scale Features
- Archeological Features

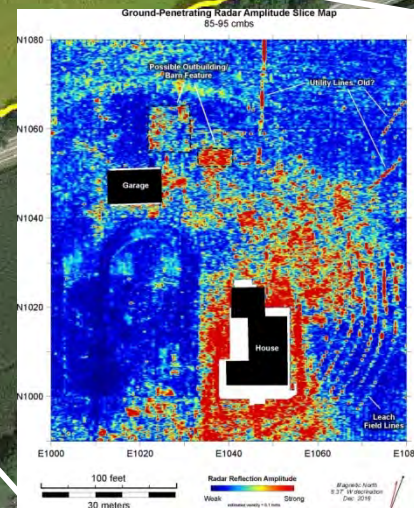


CHYO Geophysical Survey by OVAI

 Magnetic Gradient Survey (34.5 acres-all mag)

 Magnetic Gradient & Radar Survey (2.2 acres-all GPR)

Magnetic North
6.37° W declination
Dec. 2016





Missing historic features (red) on 2017 plan (black)



- Historic character remains with
 - A few contributing features
 - General aspects like location and setting
- Decreased historic integrity with
 - Lack of historic features
 - Presence of recent features
- Fortunately, the impacts are largely reversible





Landscape Treatment Vision

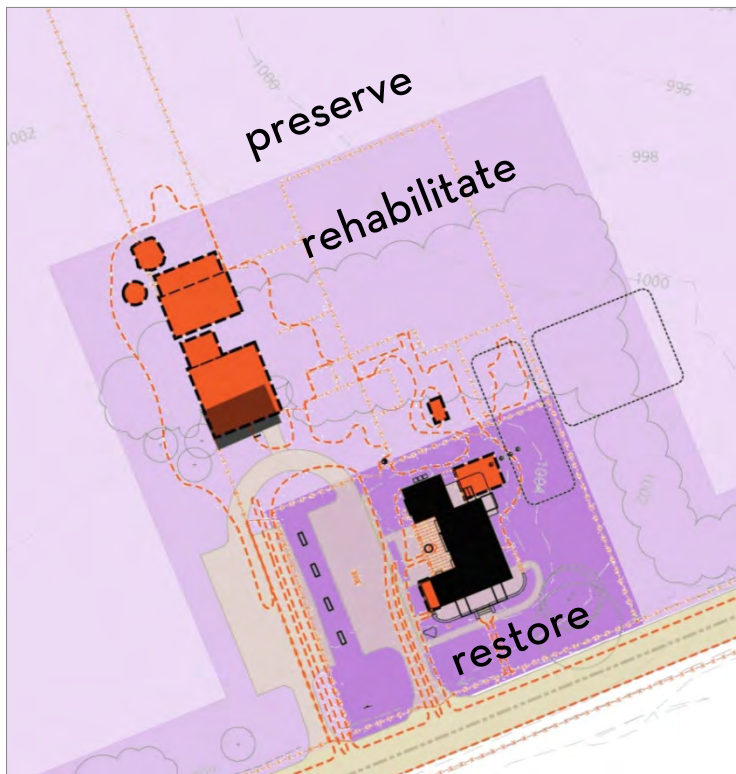
To preserve and enhance the historic landscape character of the homestead and its supporting fields and woodlands within the Charles Young Buffalo Soldiers National Monument and to promote enjoyment and understanding of the site as an entryway for commemoration of the national and international importance and leadership of Charles Young, making his family's relationship to this place and its stories a hub for their intersecting communities, which include neighborhood, military, civil rights movement, arts, and education.





Landscape Treatment Approach

Zones within an overall framework of landscape rehabilitation



- existing features in black
- missing features in orange

Landscape Treatment Alternatives

- **No Action**
 - Continue stewardship and interpretation of the site
- **Action Alternative 1**
 - Recapture historic character with interventions to a limited degree
- **Action Alternative 2**
 - Recapture historic character with interventions to a greater degree

