

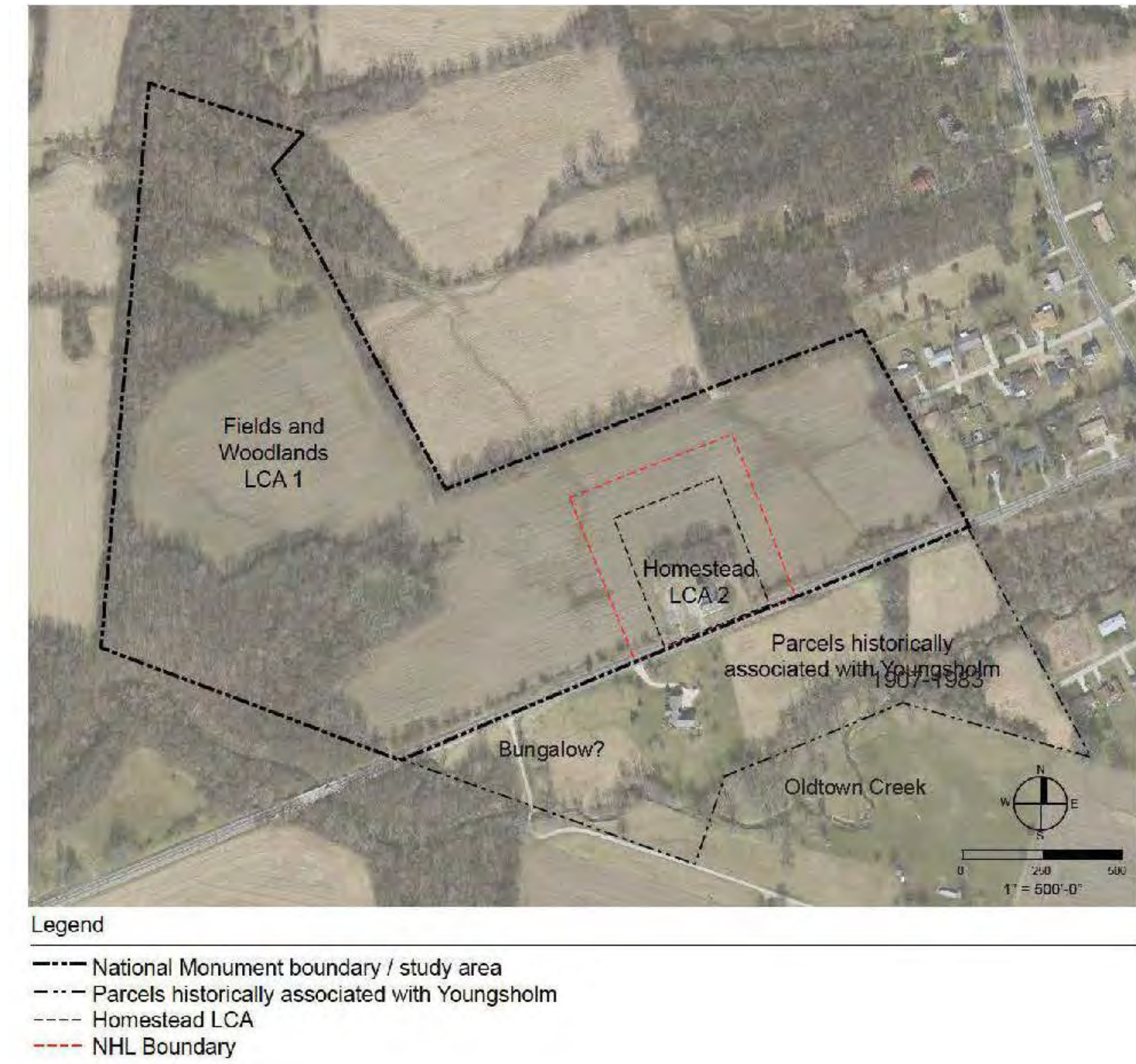
YOUNGSHOLM: CHARLES YOUNG BUFFALO SOLDIERS NATIONAL MONUMENT

CULTURAL LANDSCAPE REPORT / ENVIRONMENTAL ASSESSMENT AND SCHEMATIC DESIGN

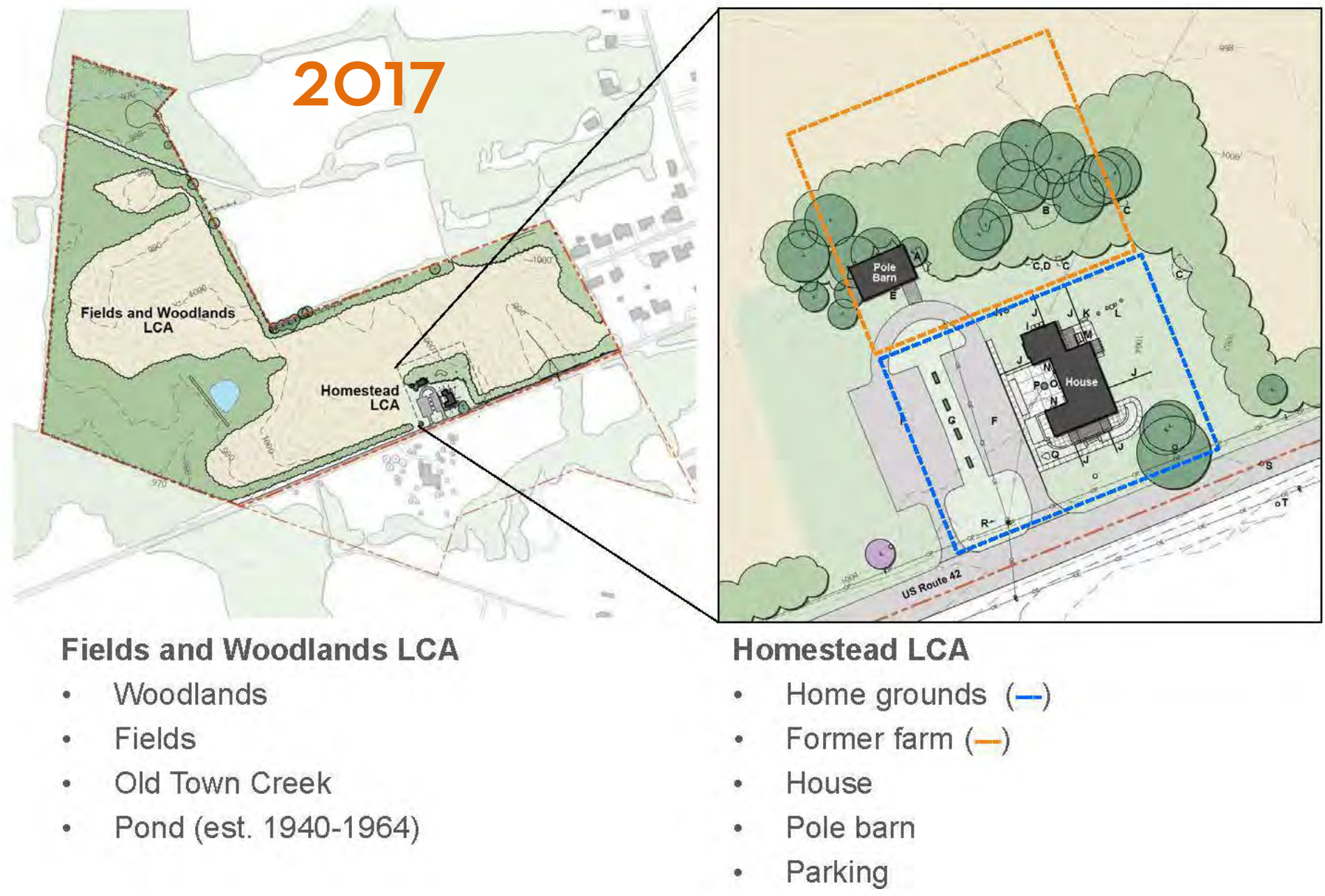


Through the Youngsholm Cultural Landscape Report and Landscape Rehabilitation Project, Quinn Evans Architects enables the Charles Young Buffalo Soldiers National Monument to embody the story of an American hero.

As a soldier, diplomat, and intellectual, Charles Young (1864-1922) overcame inequality to become a leading national figure in the years after the Civil War when the United States emerged as a world power. His family's house and farm, affectionately called "Youngsholm", served as a refuge away from service as a commander of the Buffalo Soldiers and a military attaché in the western US, Mexico, Haiti, Liberia, and Nigeria, among other posts.



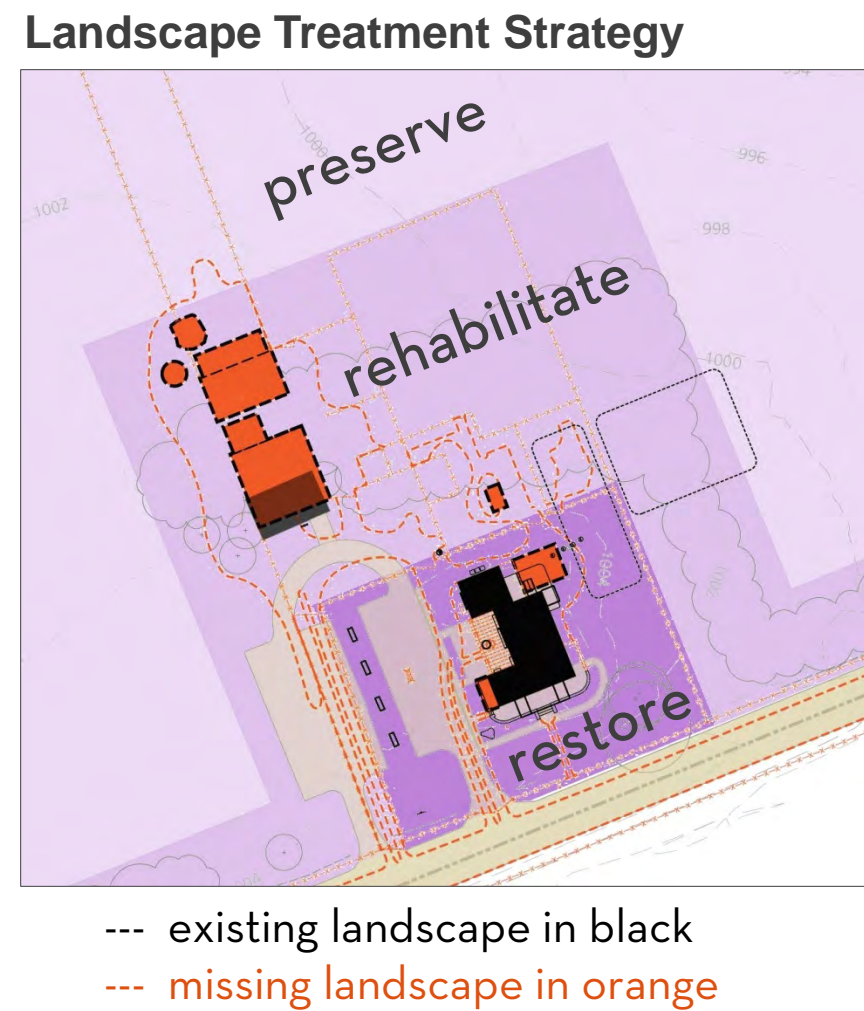
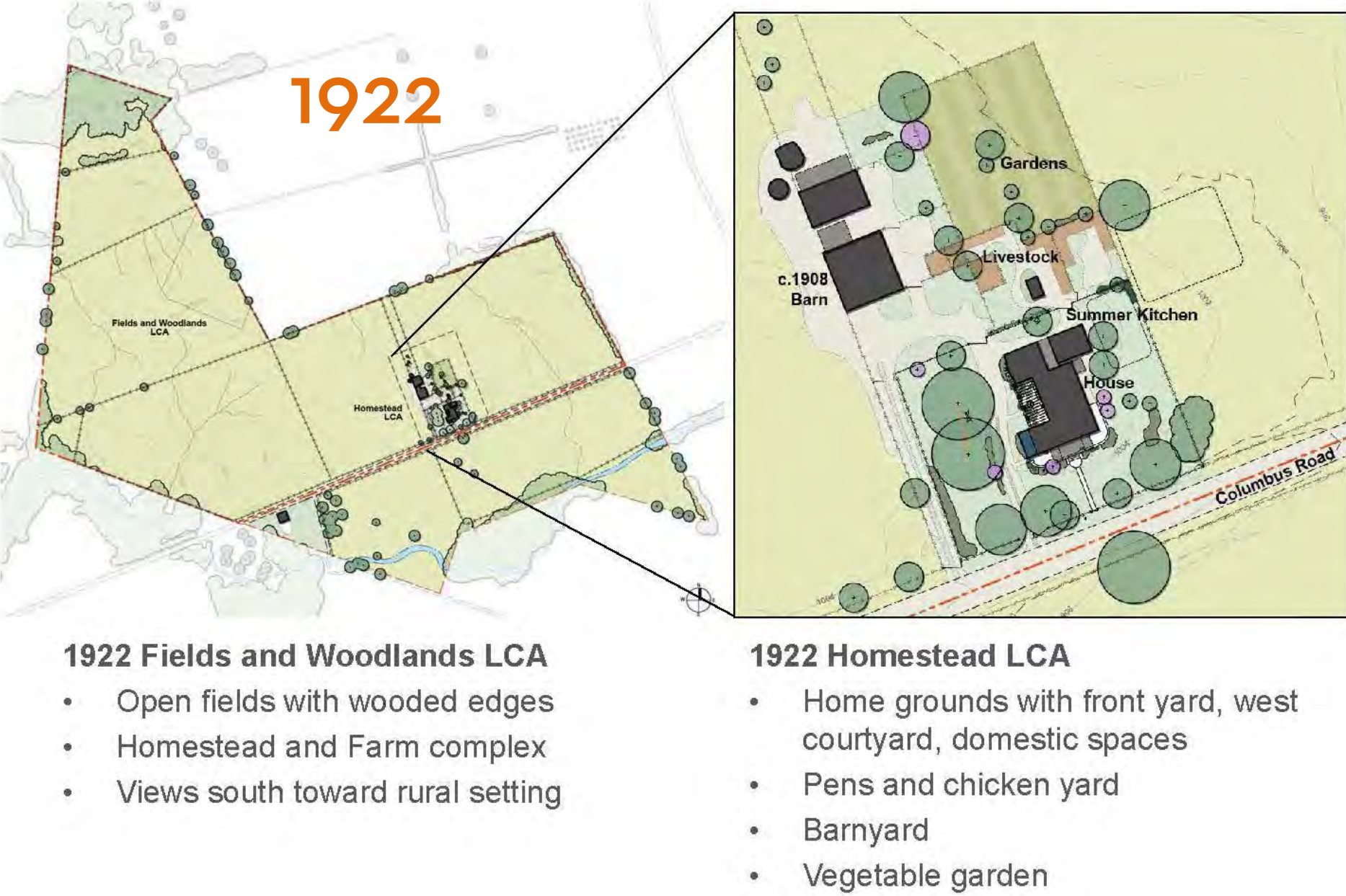
What Remains?



The combined Cultural Landscape Report and Environmental Assessment will guide the treatment, use, and management of heritage resources through the in-depth documentation of the 60-acre site over-time, analysis of landscape conditions, and provision of treatment recommendations. Schematic design of the preferred alternative will allow the public to envision life at the farm in 1922; enjoy gathering spaces, accessible trails, compatible parking, and interpretive exhibits; and benefit from the sustainable management of fields and woodlands.

For the Environmental Assessment, QEA is collaborating with Woolpert, Inc. to study the potential environmental consequences of the recommendations. The project was preceded by a historic structure report by STRATA Architects, the prime on this contract. After the public review of the report, completion of the schematic design phase is planned for early 2018.

What's Missing?



What's the Opportunity?

While the house and field pattern remain, nearly all traces of domestic and agricultural life have disappeared over time.

This presents a unique opportunity to interpret the story of the Young family through the restoration of the 1922 homestead and the rehabilitation of farm and fields.

Let the Place Tell the Stories



YOUNGSHOLM: CHARLES YOUNG BUFFALO SOLDIERS NATIONAL MONUMENT

WILBERFORCE, OHIO

CULTURAL LANDSCAPE REPORT / ENVIRONMENTAL ASSESSMENT AND SCHEMATIC DESIGN



Both Alternatives 1 and 2

- Restore home grounds (fenced area around the house) to 1922 historic character for full interpretation and compatibility with HSR recommendations
- Improve wayfinding and safety for visitor and staff approach, arrival, and parking
- Relocate parking and accommodate buses and other large vehicles (24 cars, 2 buses/trailer)
- Provide pervious, mowable parking area
- Provide bicycle access from neighborhood
- Manage fields via partnership as hay and crops
- Provide interpretive trails around field margins for immersive experience of agricultural landscape, historic views to homestead, and education associated with the farm pond
- Consider management of rural character of setting, particularly to the south

Alternative 1

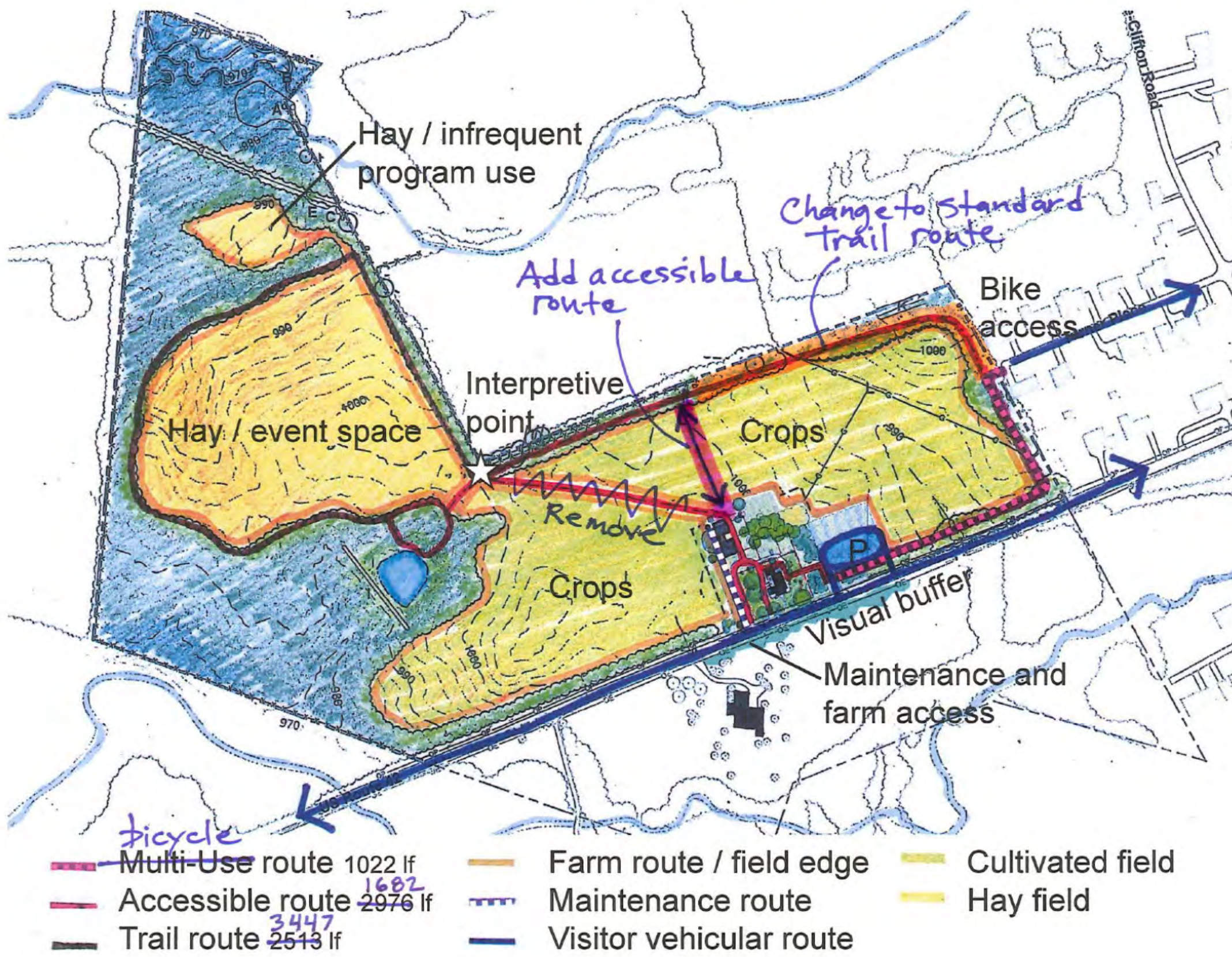
- Restore home grounds, rehabilitate spatial organization of farm, preserve fields and woodlands
- Relocate parking, basic orientation, and arrival sequence to east of the house
- Combine maintenance/farm access and separate from visitor access
- Interpret farm with fences to define historic and open programmatic spaces and to regain a sense of character

Alternative 2

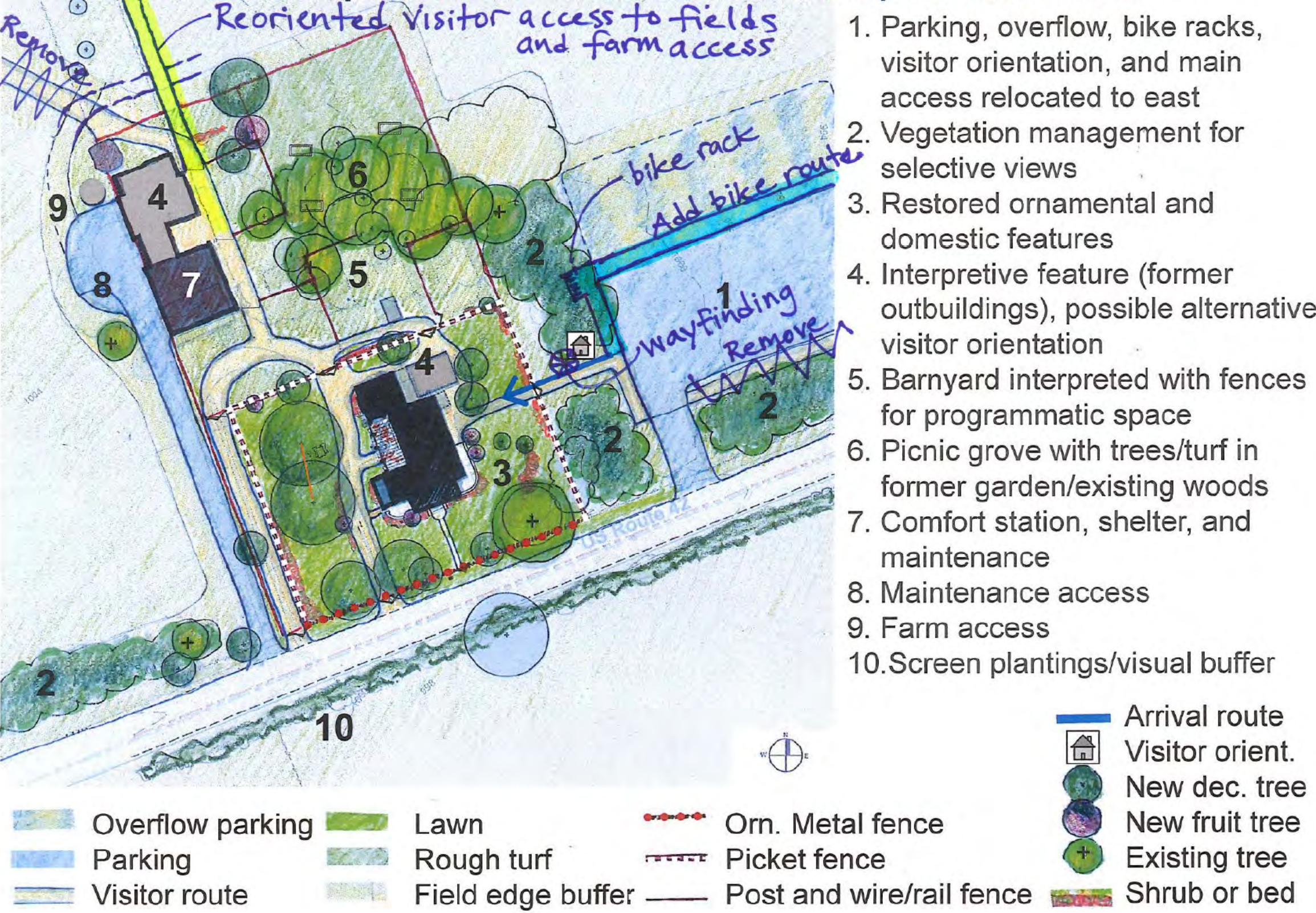
- Restore home grounds, rehabilitate character and features of farm, rehabilitate (to a limited extent) fields and woodlands
- Relocate parking to west of the existing parking area, adjacent to visitor contact area (barns), and provide maintenance and farm access
- Access house in historic sequence, access porch with sloped walk
- Interpret the summer kitchen with a frame and roof with movable tables/benches
- Enhance historic character in farm and barnyard, rehabilitate with historic fences, incorporate tables/benches into pen areas for open programming
- Provide more accessible trails in fields
- Grade stage zone at natural amphitheater in the northwest field

Alternative 1 with March 2017 workshop notes

Alternative 1: Recapture Historic Character of Core, Expand Site Access

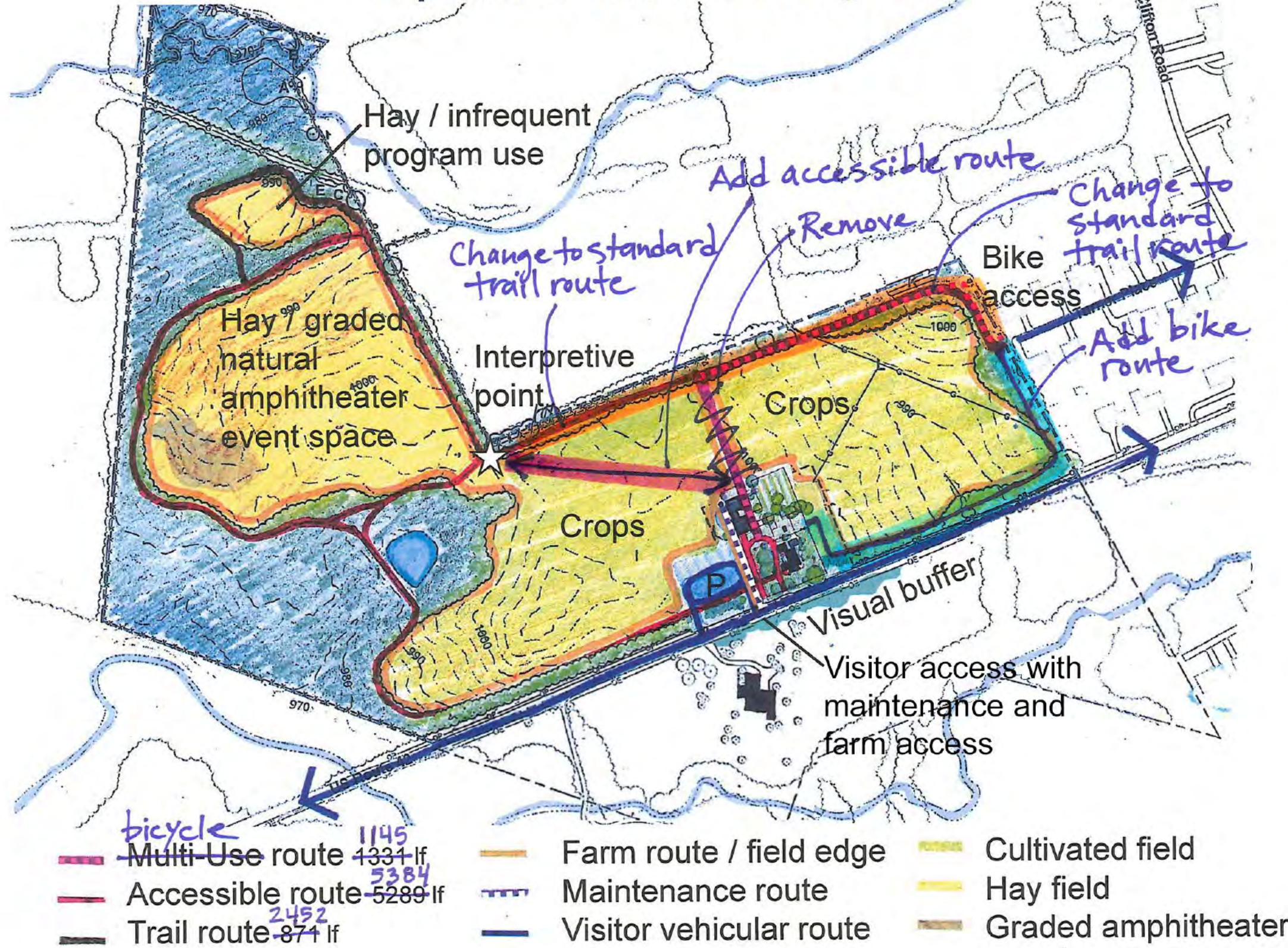


Alternative 1: Recapture Historic Character of Core, Expand Site Access



Alternative 2 with March 2017 workshop notes

Alternative 2: Recapture Historic Character and Features of Core, Expand Site Access and Programs



Alternative 2: Recapture Historic Character and Features of Core, Expand Site Access and Programs

