

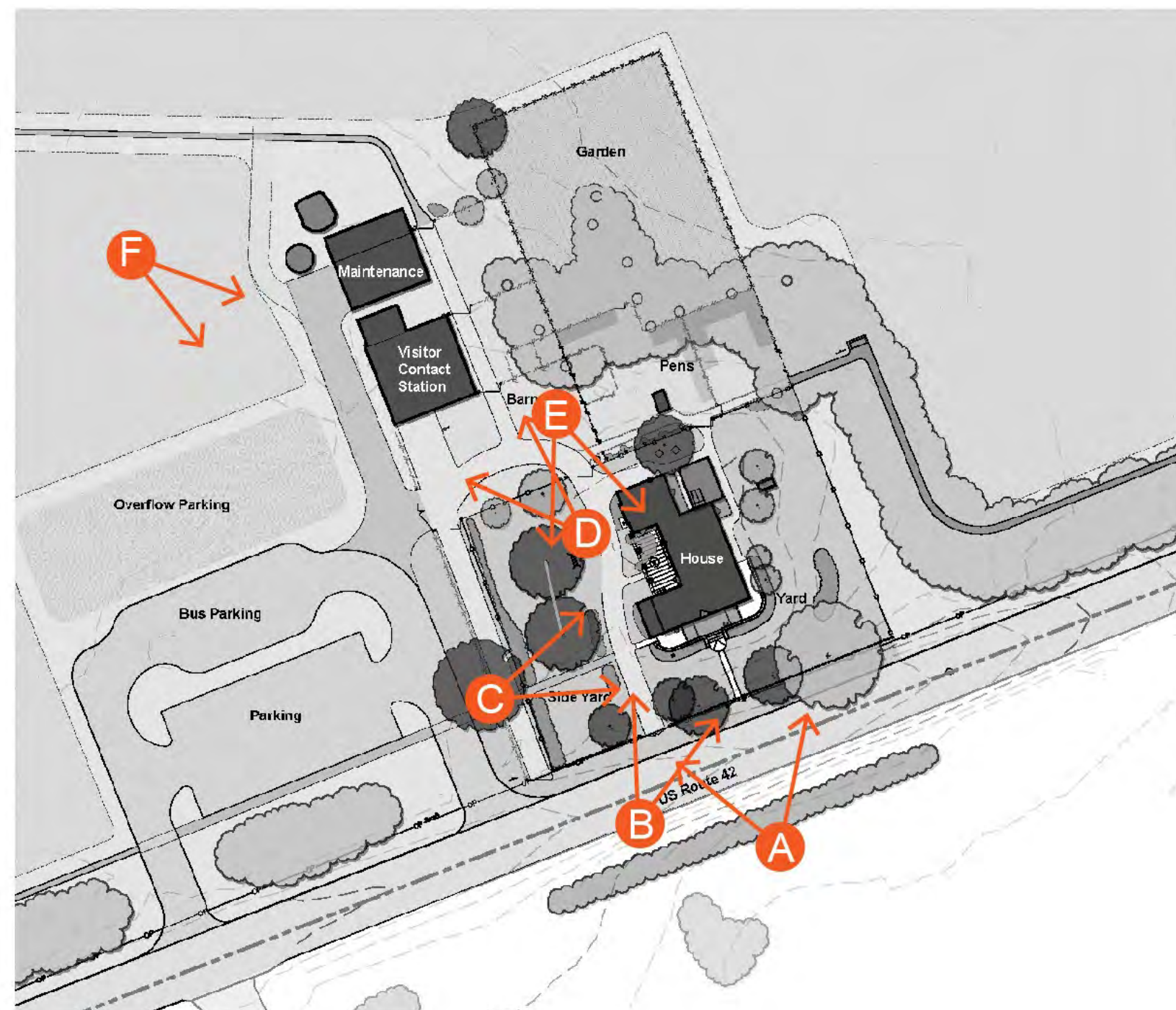
YOUNGSHOLM: CHARLES YOUNG BUFFALO SOLDIERS NATIONAL MONUMENT

WILBERFORCE, OHIO

CULTURAL LANDSCAPE REPORT / ENVIRONMENTAL ASSESSMENT AND SCHEMATIC DESIGN



Landscape treatment sketches show the recapture of the historic character and features of the Youngsholm Homestead



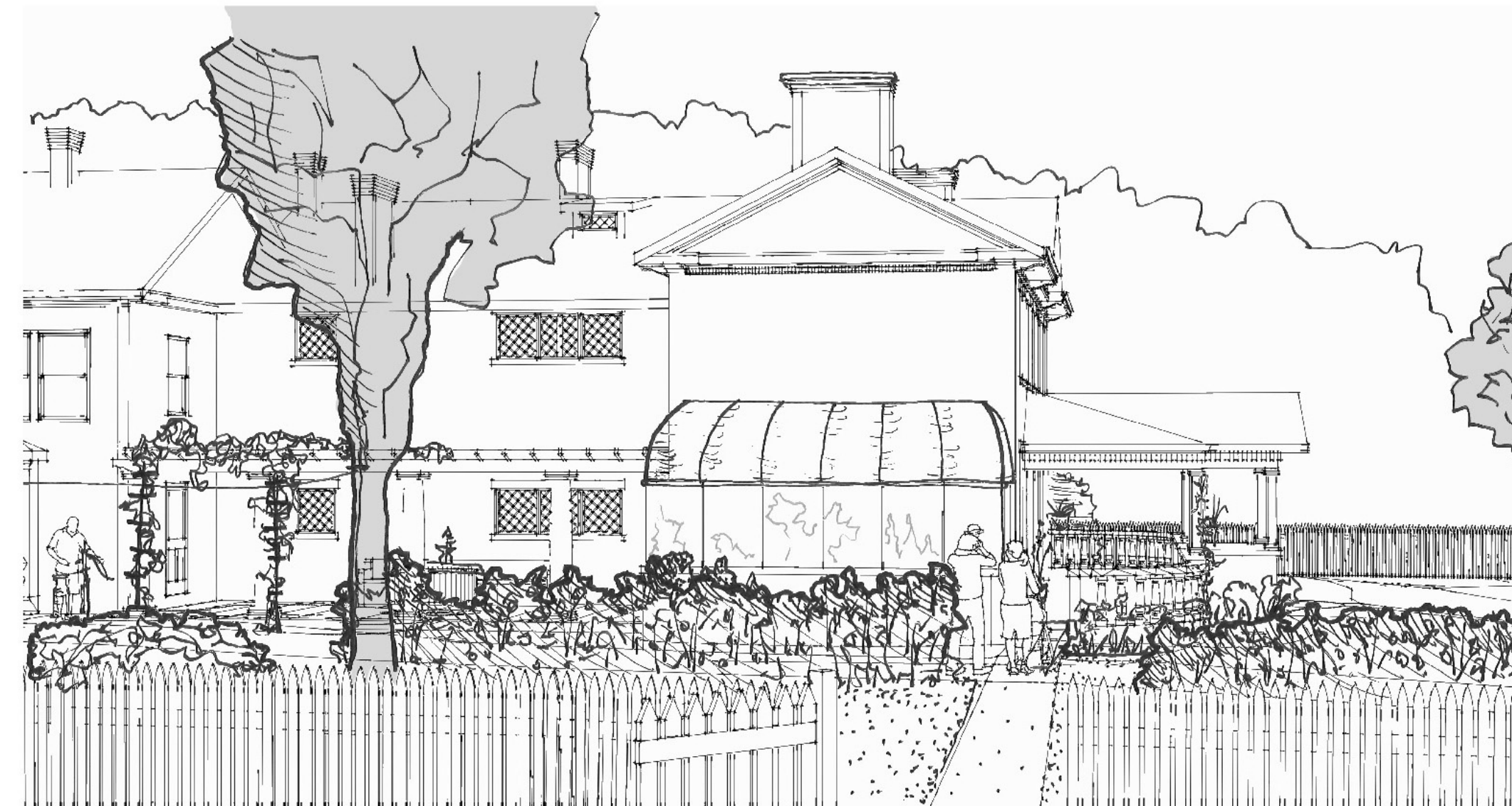
Sketch view orientation



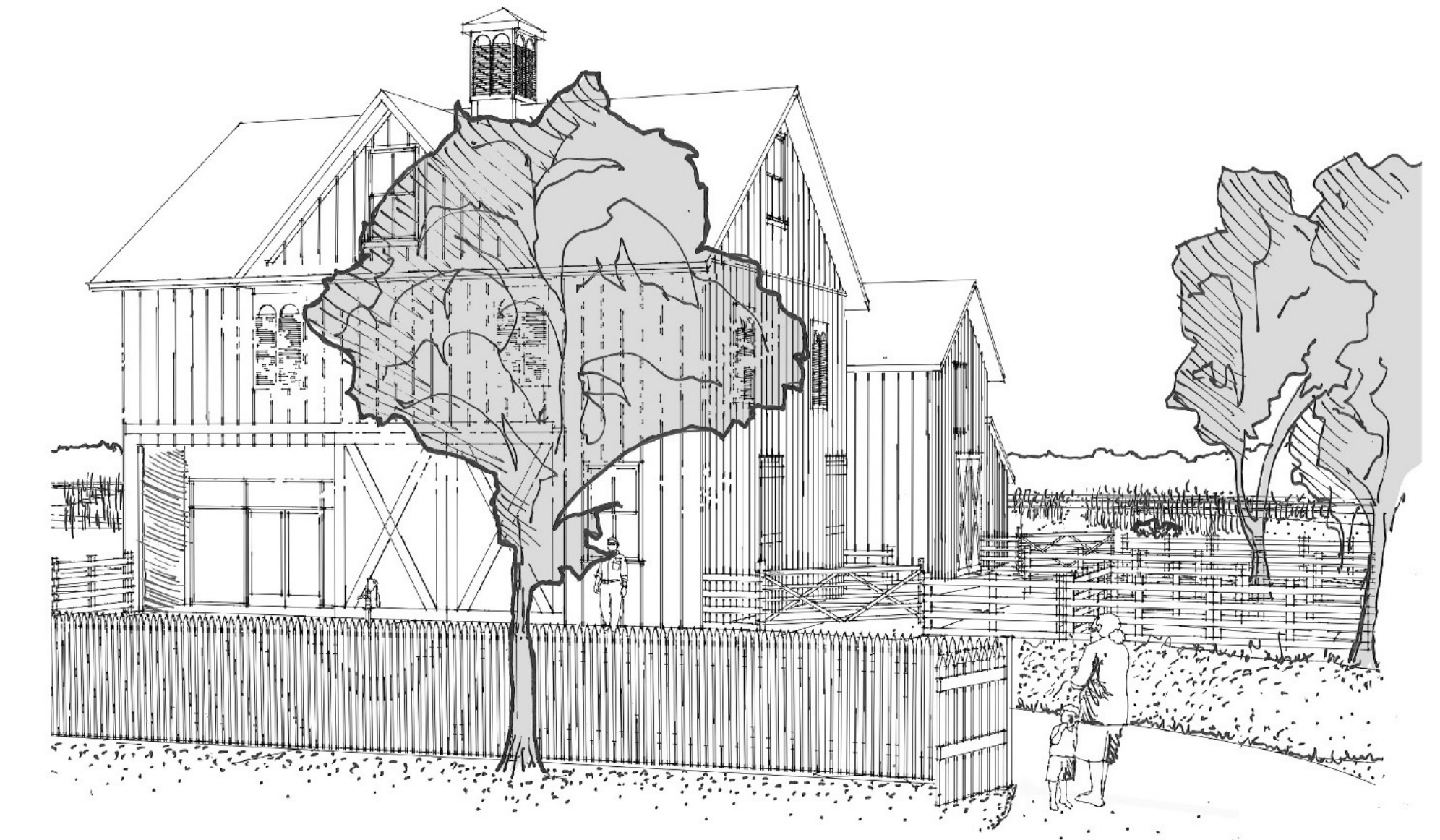
A. The treatment intent is to recapture the spatial rhythm and massing of buildings and canopy trees along the US Route 42 frontage. (source: QEA, 2017)



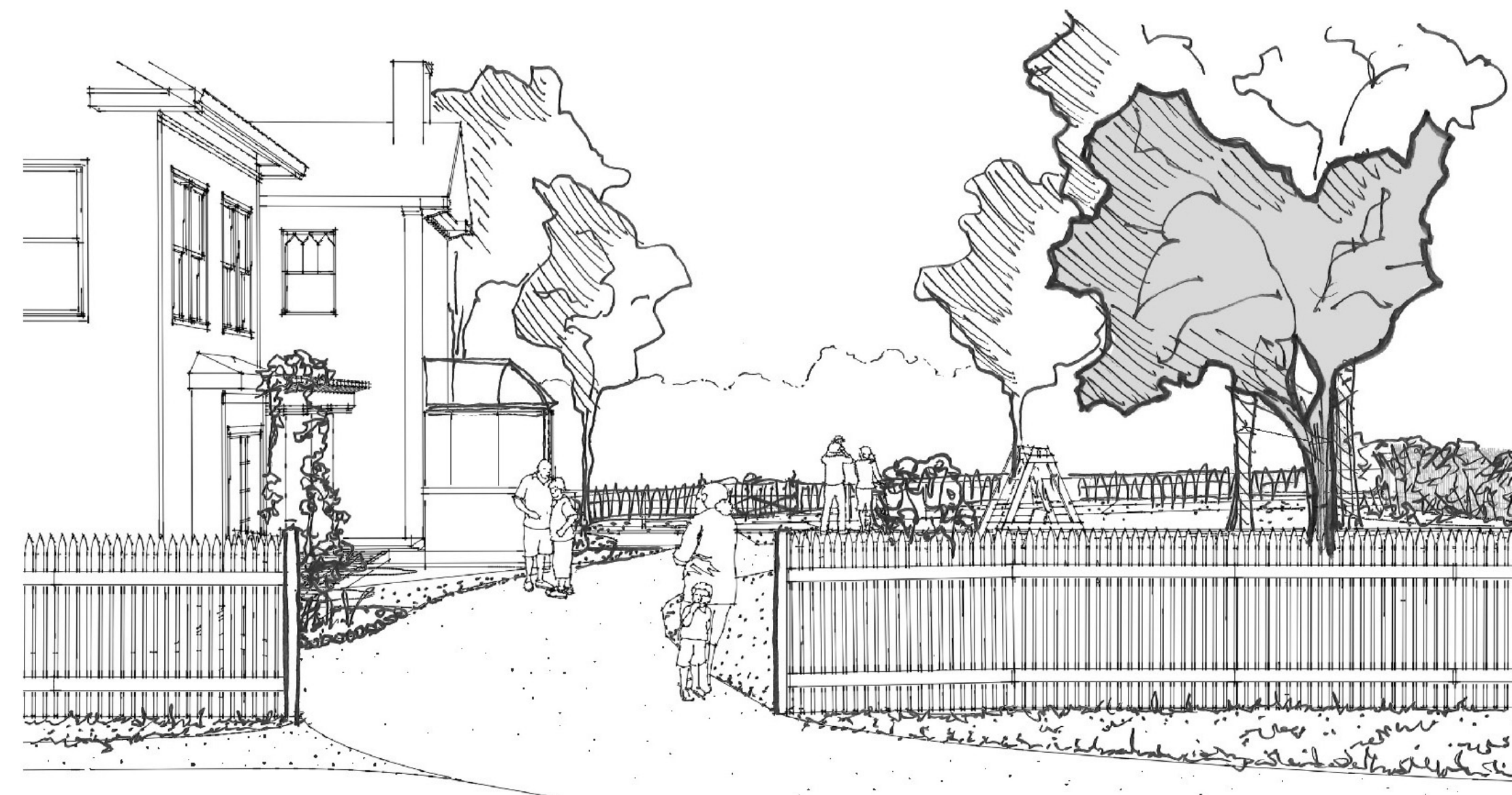
B. Restoration of small-scale elements such as fences, gates, and hitching post will enhance the historic character of the landscape. (source: QEA, 2017)



C. Upon arrival, visitors can glimpse the rehabilitated vegetation and conservatory across the Youngsholm side yard. (source: QEA, 2017)



D. The visitor contact station is in the location of the historic barn complex. Visitors can walk into the fields or return to the house from this area. (source: QEA, 2017)



E. Picket fencing defines the boundary between the home grounds and the barnyard and pens. Lawn with trees, shrubs, rustic outdoor furniture, and a clothesline indicate the domestic character of the landscape. (source: QEA, 2017)



F. Addition of the visitor contact station, canopy trees, and fencing helps to redefine the spatial definition of the Homestead when viewed from the fields. (source: QEA, 2017)