

National Desert Storm and Desert Shield Memorial  
Site Selection Public Scoping Meeting

# WELCOME

## **The purpose of tonight:**

- ▶ Identify any issues or potential concerns associated with the site selection of the proposed memorial
- ▶ Gather early public input on the scope of the project and study
- ▶ Encourage you to provide your thoughts and ideas in writing

July 12, 2017



# Project Background and Site Locations

- ▶ Congress authorized establishment of the National Desert Storm and Desert Shield Memorial in Public Law 113-291 on Federal land in the District of Columbia. This memorial is anticipated to be known as the National Desert Storm War Memorial
- ▶ Congress authorized the location of the commemorative work in Public Law 115-18 within Area I as defined under the Commemorative Works Act
- ▶ Work must be consistent with the Commemorative Works Act; Construction of the memorial will be sponsored and funded by the National Desert Storm War Memorial Association
- ▶ The memorial will be maintained by the National Park Service (NPS)





# Purpose and Need

## Purpose of the Memorial

- ▶ To commemorate and honor members of the Armed Forces who served on active duty in support of Operation Desert Storm or Operation Desert Shield

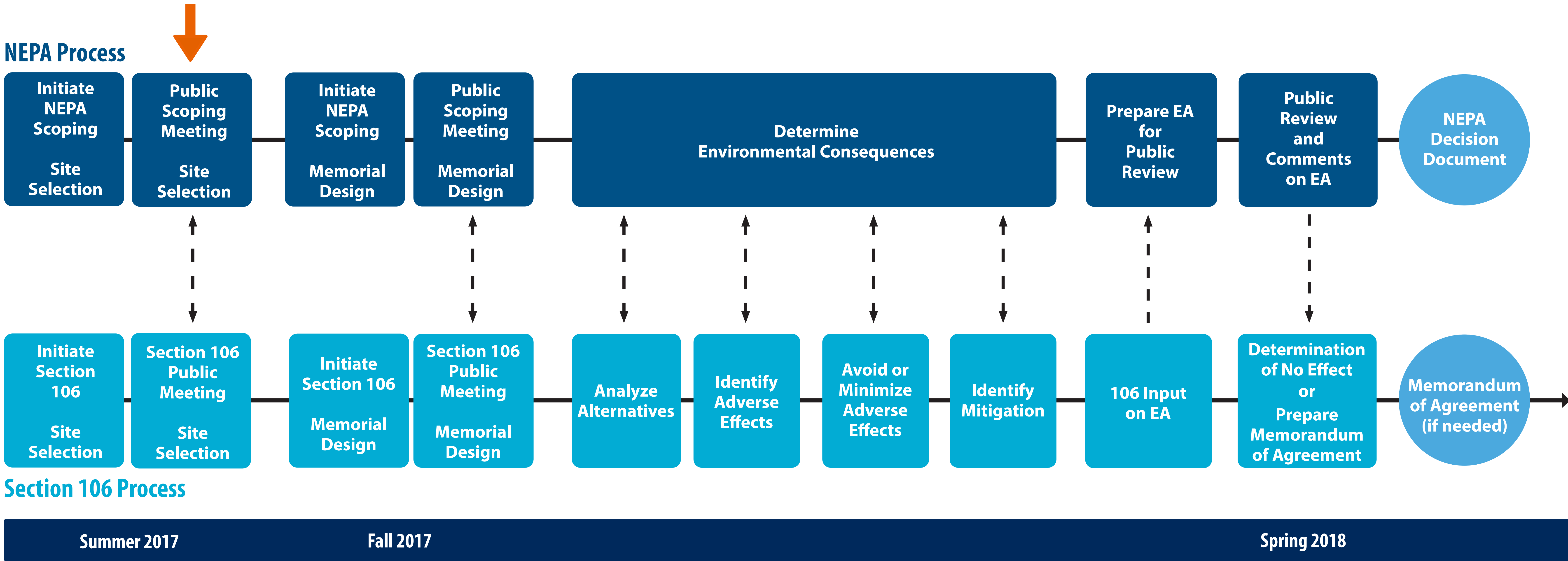
## Need of the Memorial

- ▶ To carry out Public Law 113-291 and address the current lack of a formal place for commemoration of those who served during Operation Desert Storm or Operation Desert Shield





# NEPA and Section 106 - A Coordinated Approach

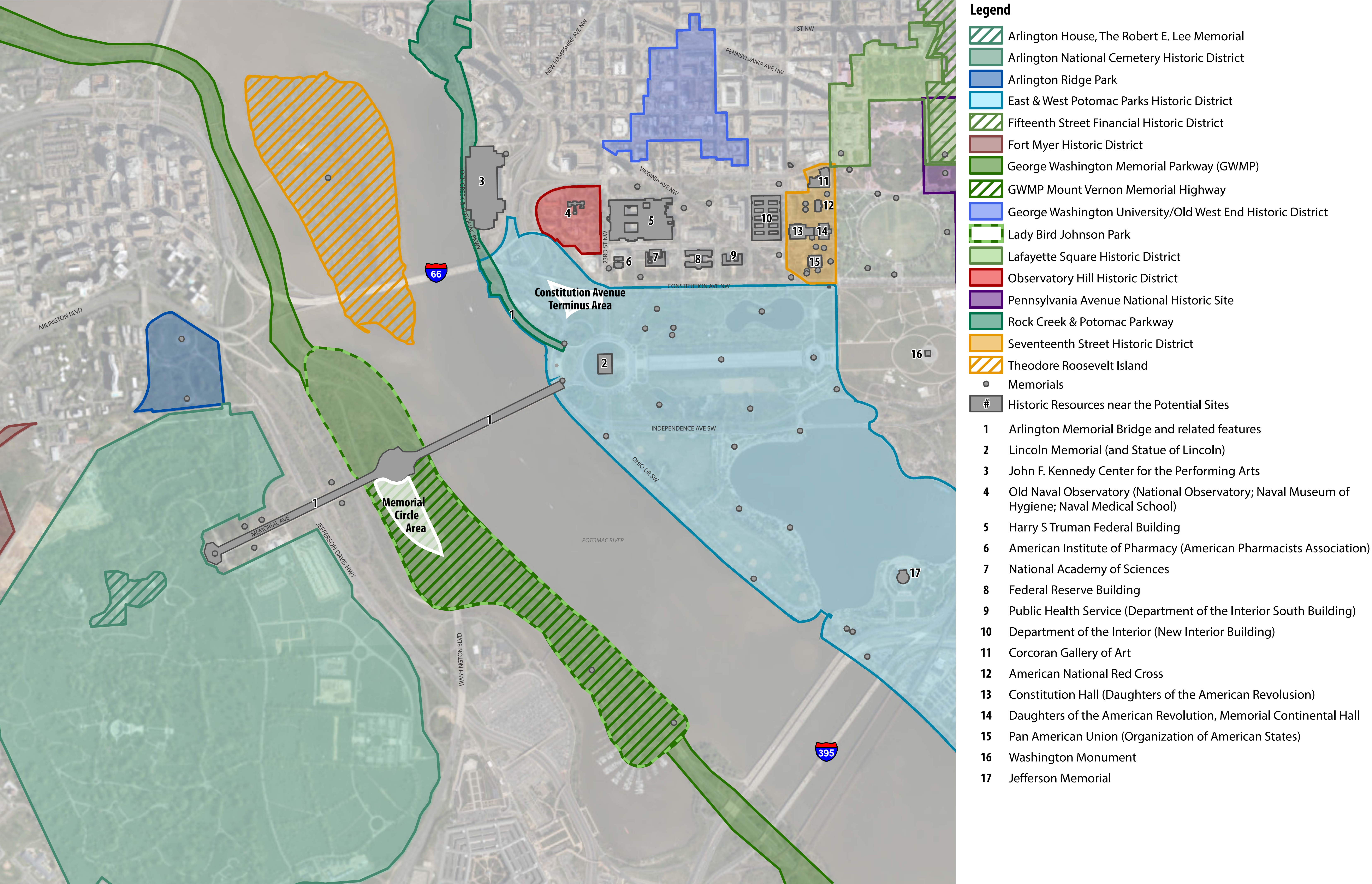


## What Issues will the EA Address?

- |  |   |   |   |
|--|---|---|---|
| <b>Cultural Resources</b> <ul style="list-style-type: none"><li>▶ Historic Resources</li><li>▶ Cultural Landscapes</li><li>▶ Visual Resources</li><li>▶ Archeology</li></ul> | <b>Transportation</b> <ul style="list-style-type: none"><li>▶ Traffic Operations</li><li>▶ Parking</li><li>▶ Pedestrian Circulation</li></ul> | <b>Natural and Physical Resources</b> <ul style="list-style-type: none"><li>▶ Soils</li><li>▶ Vegetation</li><li>▶ Water Resources</li><li>▶ Stormwater</li><li>▶ Floodplains</li></ul> | <b>Other Issues</b> <ul style="list-style-type: none"><li>▶ Land Use</li><li>▶ Utilities</li><li>▶ Park Operations</li><li>▶ Visitor Use and Experience</li></ul> |
|--|---|---|---|



# Historic Resources in the Vicinity of Sites Under Consideration

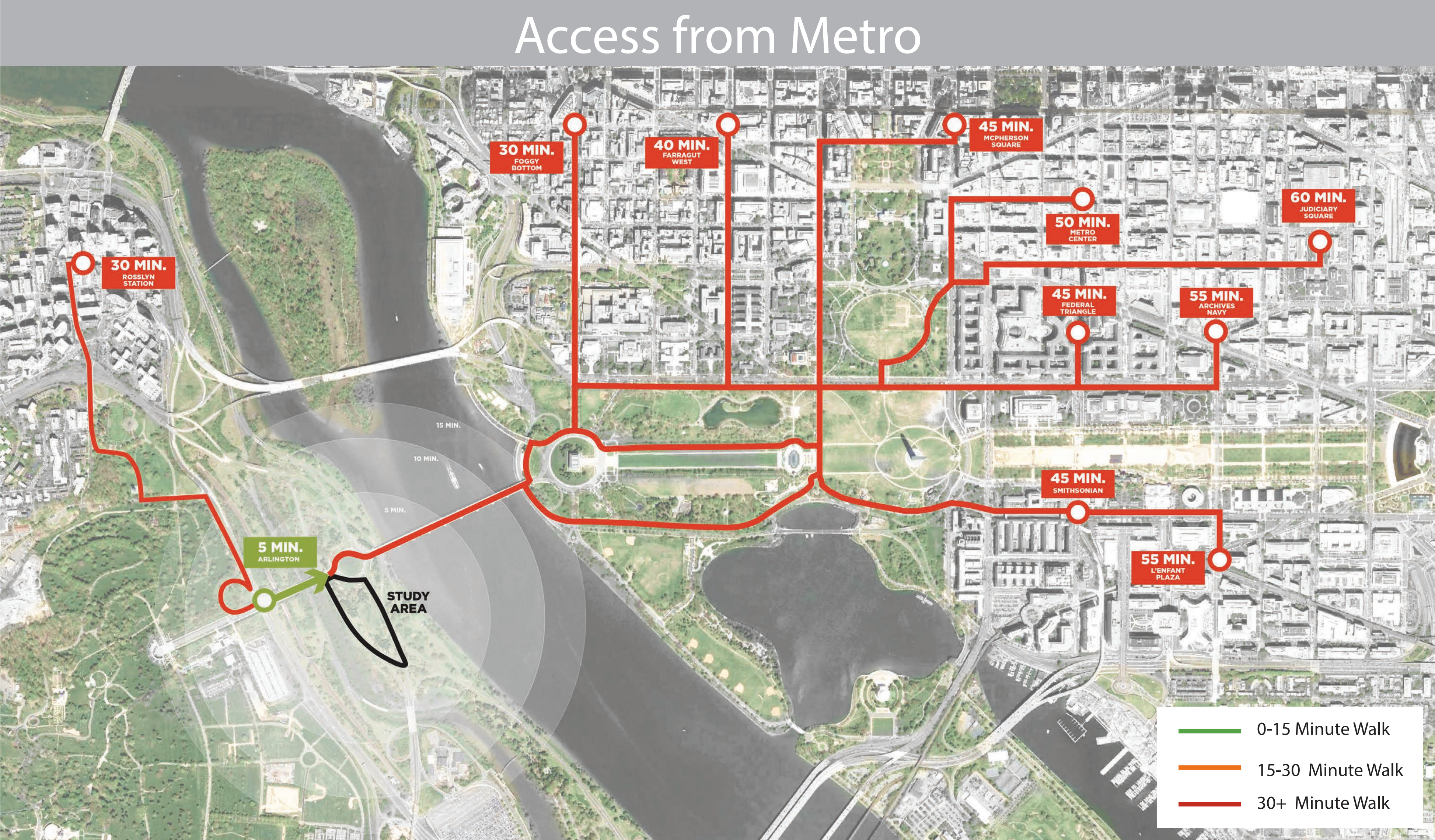
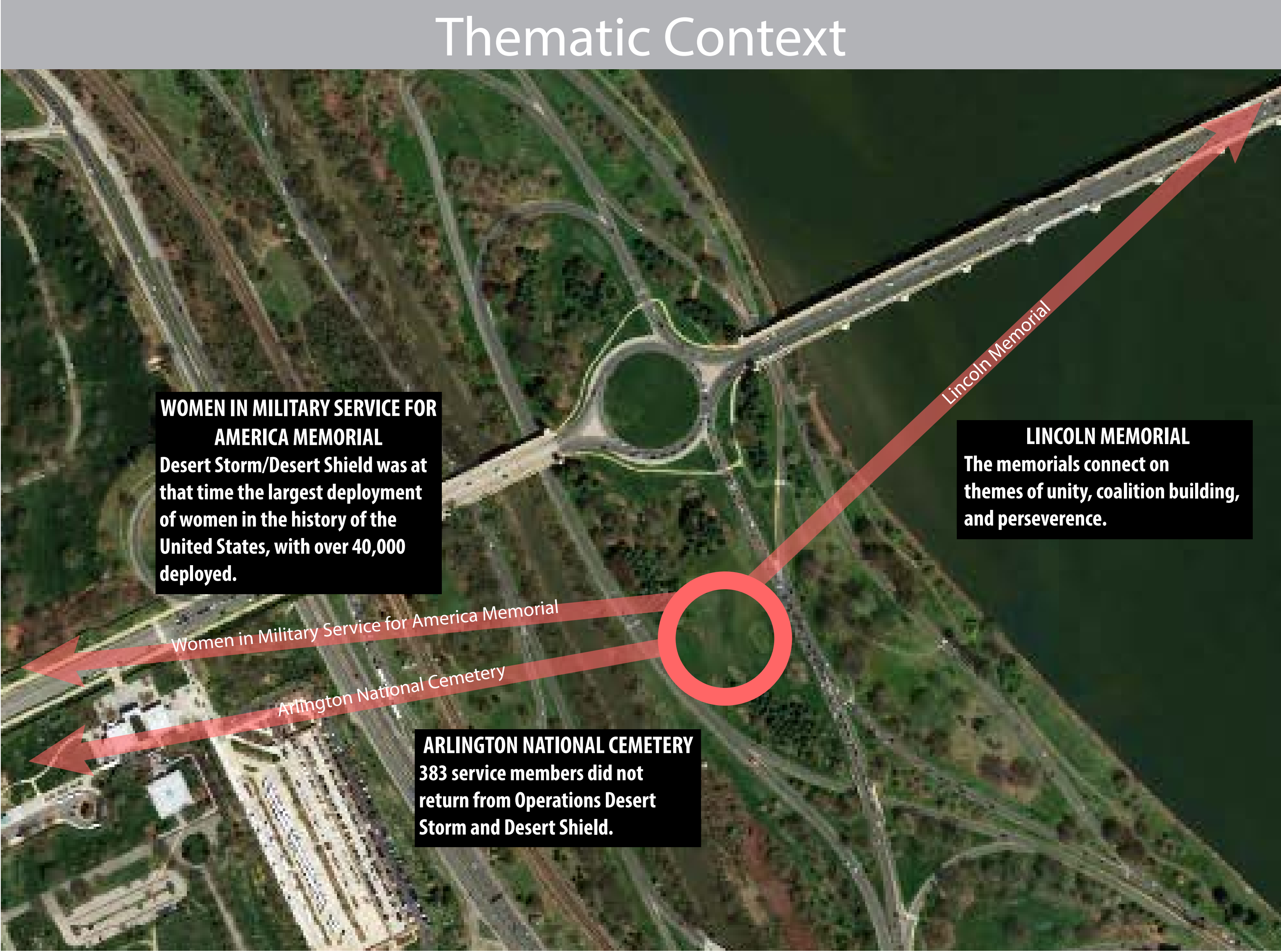


Source: Esri, DigitalGlobe, GeoEye, Earthstar Geographics, CNES/Airbus DS, USDA, USGS, AeroGRID, IGN, and the GIS User Community



# Memorial Circle Area

- ▶ 9.3 acres
- ▶ Identified as Site 1 in the *Memorials and Museums Master Plan*
- ▶ Memorial program accommodated
- ▶ Thematic link to Arlington National Cemetery, Women in Military Service for America Memorial, and Lincoln Memorial
- ▶ Access to transit and parking
- ▶ Modest challenges in terms of tranquility, infrastructure requirements, and pedestrian access due to traffic patterns and volumes





# Constitution Avenue Terminus Area

- ▶ 3.8 acres
- ▶ Identified as Site 6 in the *Memorials and Museums Master Plan*
- ▶ Desired program accommodated to a high level
- ▶ Thematic nexus to Vietnam Veterans Memorial and other 20th Century war memorials, including the Korean War Memorial and the World War II Memorial
- ▶ High visibility and access to other nearby attractions
- ▶ Adjacent to U.S. Institute of Peace
- ▶ Minor challenges in terms of resiliency due to floodplain location are being addressed by the Army Corps of Engineers

