

National Desert Storm and Desert Shield Memorial
Environmental Assessment
SITE SELECTION PUBLIC SCOPING MEETING



July 12, 2017

Agenda

Welcome and Purpose of Meeting

- ▶ National Park Service

Project Background

- ▶ Scott Stump, National Desert Storm War Memorial Association

NEPA and Section 106 Process and Issues

- ▶ Claire Sale, AECOM

Project Description

- ▶ Claire Sale, AECOM and Skip Graffam, OLIN

Opportunity for Public Comment

WELCOME AND PURPOSE OF MEETING

National Park Service

Purpose of Meeting

- ▶ First of two public scoping/ initial Section 106 meetings
- ▶ Process involves selecting a site and then a design for the memorial
- ▶ Receive public feedback on site alternatives

PROJECT BACKGROUND

Scott Stump, National Desert Storm War Memorial Association

Project Background

- ▶ Congress authorized establishment of the National Desert Storm and Desert Shield Memorial in Public Law 113-291 on Federal land in the District of Columbia. This memorial is anticipated to be known as the National Desert Storm War Memorial
- ▶ Congress authorized the location of the commemorative work in Public Law 115-18 within Area I as defined under the Commemorative Works Act
- ▶ Work must be consistent with the Commemorative Works Act; Construction of the memorial will be sponsored and funded by the National Desert Storm War Memorial Association
- ▶ The memorial will be maintained by the National Park Service (NPS)

NEPA AND SECTION 106 PROCESS AND ISSUES

Claire Sale, AECOM

Purpose and Need

Purpose of the Memorial

- ▶ To commemorate and honor members of the Armed Forces who served on active duty in support of Operation Desert Storm or Operation Desert Shield

Need of the Memorial

- ▶ To carry out Public Law 113-291 and address the current lack of a formal place for commemoration of those who served during Operation Desert Storm or Operation Desert Shield



Organization

Project Sponsor



National Desert Storm War Memorial Association

Agencies

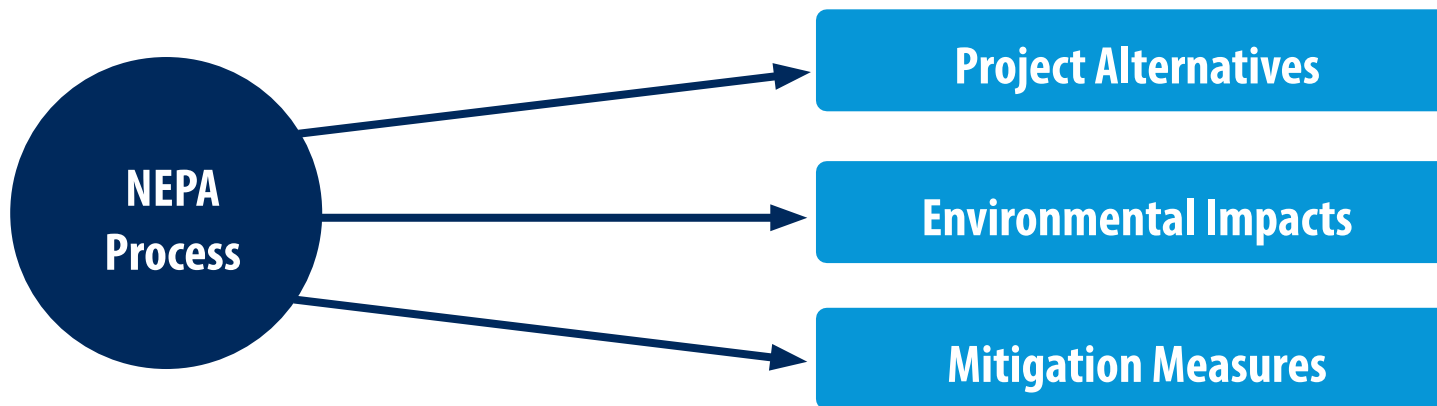


What is NEPA?

National Environmental Policy Act of 1969

(NEPA; Public Law 91-190; 42 U.S.C. 4321 *et seq.*)

- ▶ Established a national policy for **protecting the environment** and requires evaluation of alternative actions
- ▶ Goal is to ensure **informed decision-making**
- ▶ Can conclude with an Environmental Assessment (EA) and Finding of No Significant Impact (FONSI) or an Environmental Impact Statement (EIS) and Record of Decision (ROD)

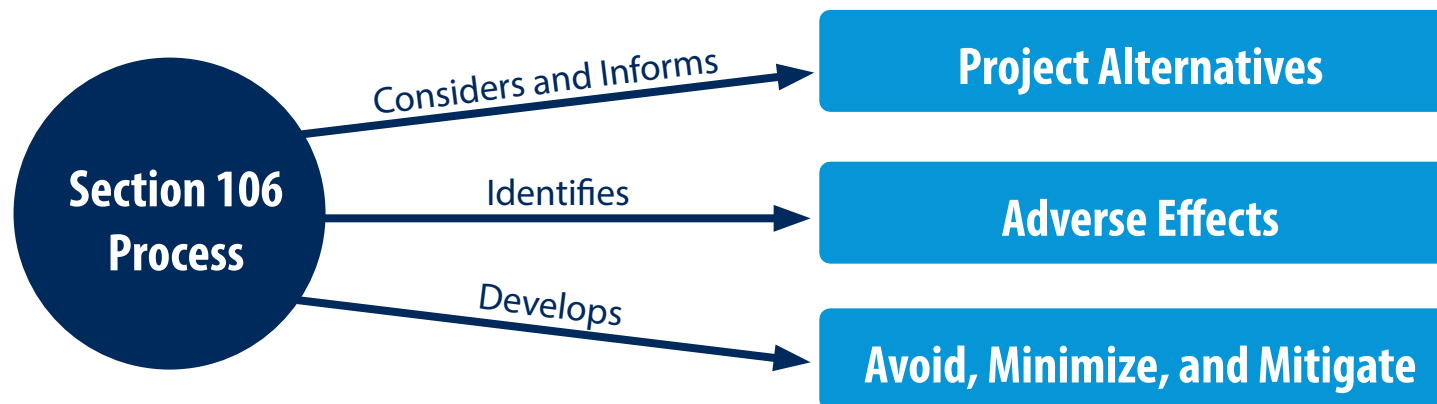


What is Section 106?

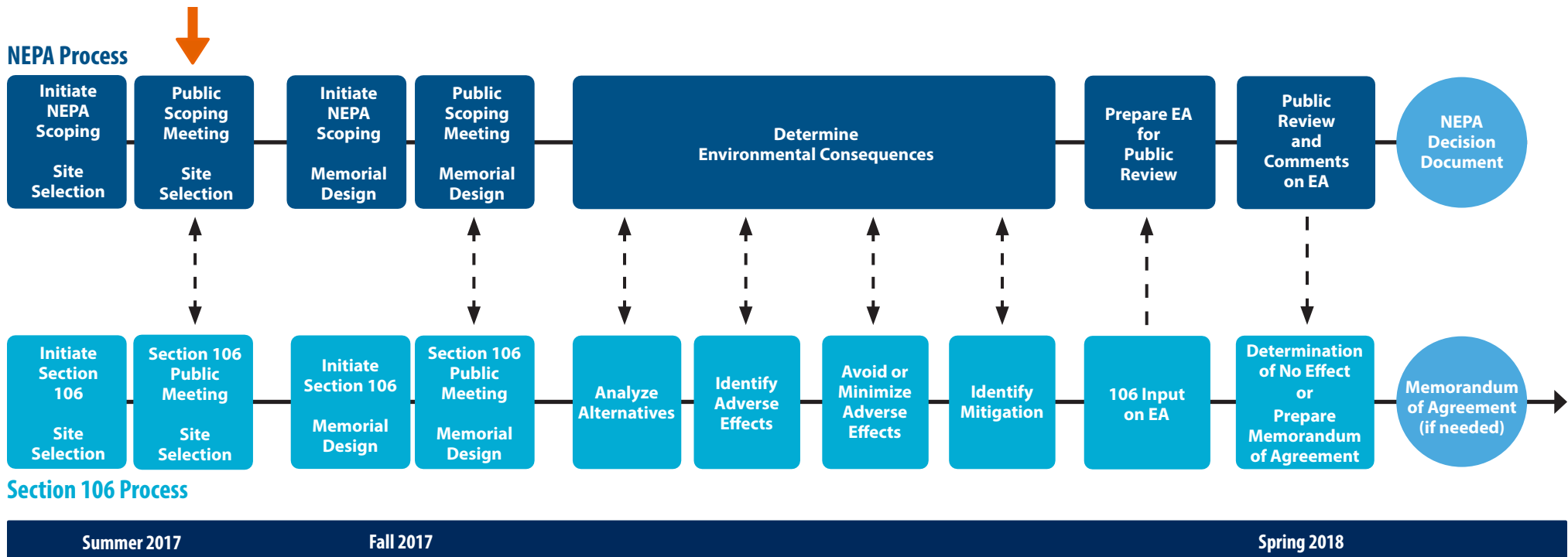
Component of National Historic Preservation Act of 1966

(NHPA; Public Law 89-665; 16 U.S.C. 470 *et seq.*)

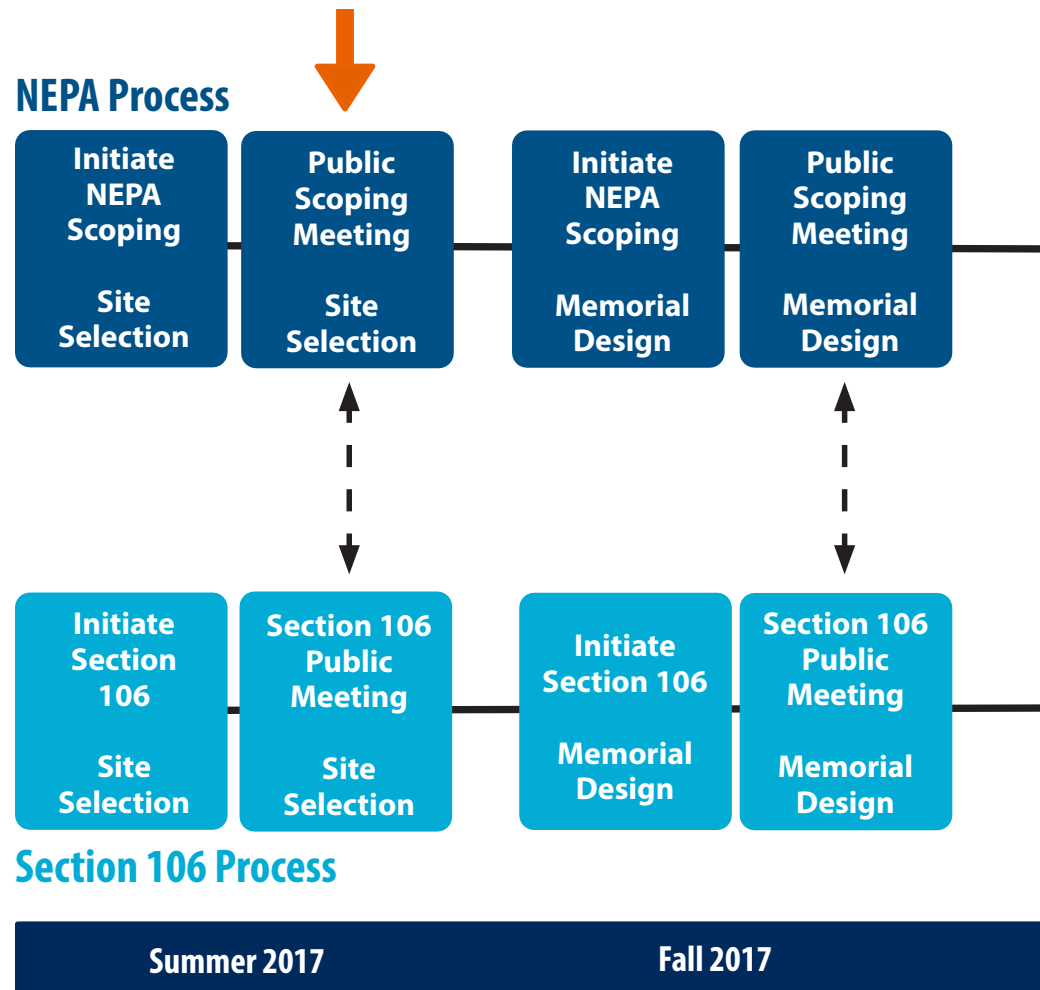
- ▶ Established a process to **protect resources** listed on, or eligible for listing in, the National Register of Historic Places, and requires the consideration of alternatives if effects on historic resources are anticipated
- ▶ Goal is to **minimize potential harm** and damage to historic properties
- ▶ Can conclude in a Determination of No Adverse Effect or a Memorandum of Agreement with Consulting Parties



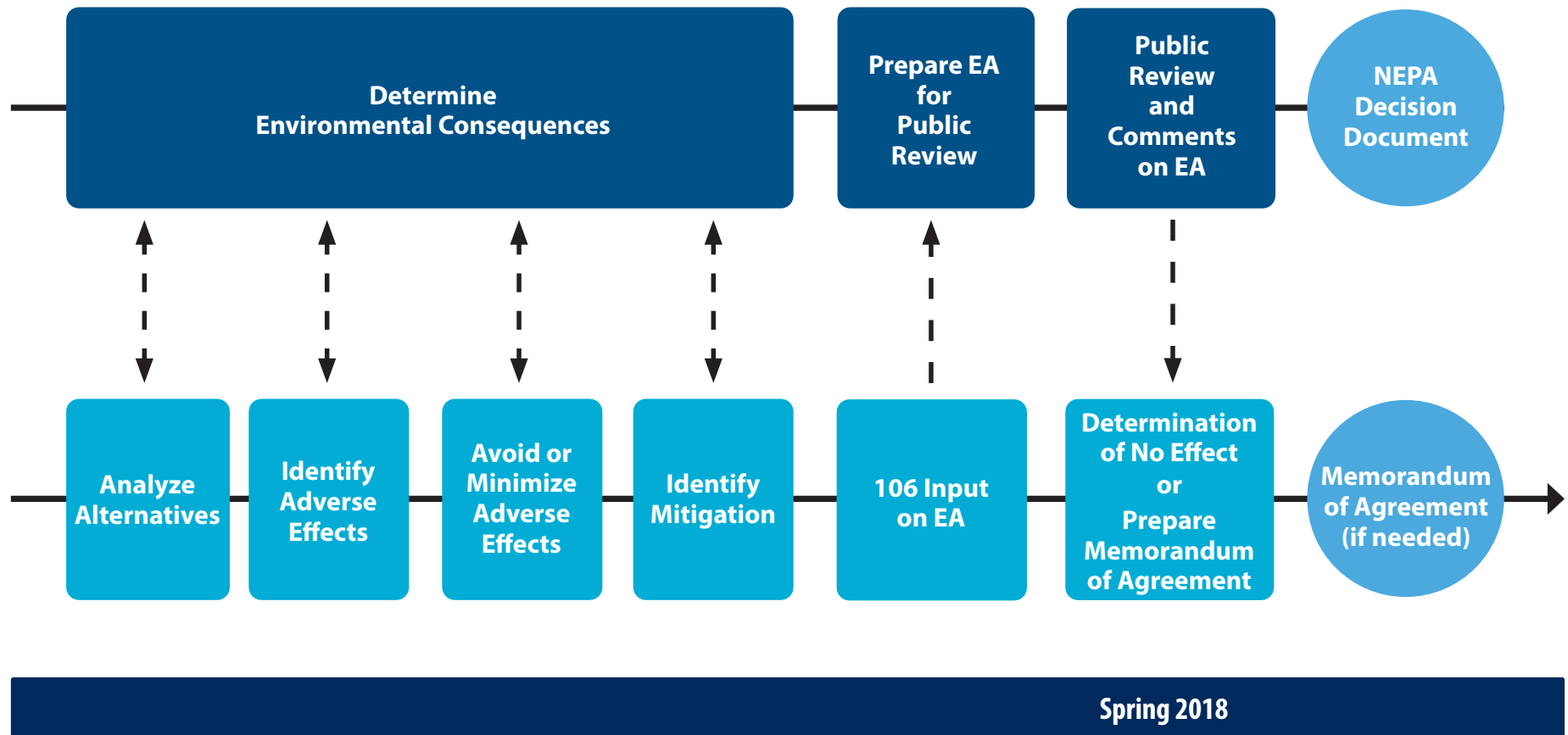
NEPA and Section 106 - A Coordinated Approach



NEPA and Section 106 - Summer 2017/Fall 2017



NEPA and Section 106 - Spring 2018



NEPA and Section 106 - Agency Process

The NPS, in cooperation with the National Capital Planning Commission (NCPC), is evaluating an updated NEPA and Section 106 process for this memorial's site and design. The purpose of this revised process is to better align and support key decision points associated with each agency's NEPA and Section 106 responsibilities, and to ensure that the review is commensurate with the complexity of the project. In addition to this site selection scoping period, the NPS and NCPC will also conduct scoping review and a scoping meeting for design in the fall 2017. Following both scoping periods, an EA will be created to document potential environmental impacts.

This is a deviation from NCPC's existing Environmental and Historic Preservation Procedures, which requires separate NEPA and Section 106 processes for site selection and the design of the memorial. If you have questions on the proposed updated process and NCPC's guidelines, please contact Matthew Flis of NCPC at 202-482-7200 or matthew.flis@ncpc.gov.

Site Location Map



— RESERVE - - - AREA I

What Issues will the EA Address?

Cultural Resources

- ▶ Historic Resources
- ▶ Cultural Landscapes
- ▶ Visual Resources
- ▶ Archeology

Other Issues

- ▶ Land Use
- ▶ Utilities
- ▶ Park Operations
- ▶ Visitor Use and Experience

Transportation

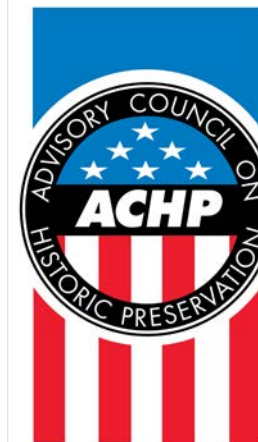
- ▶ Traffic Operations
- ▶ Parking
- ▶ Pedestrian Circulation

Natural and Physical Resources

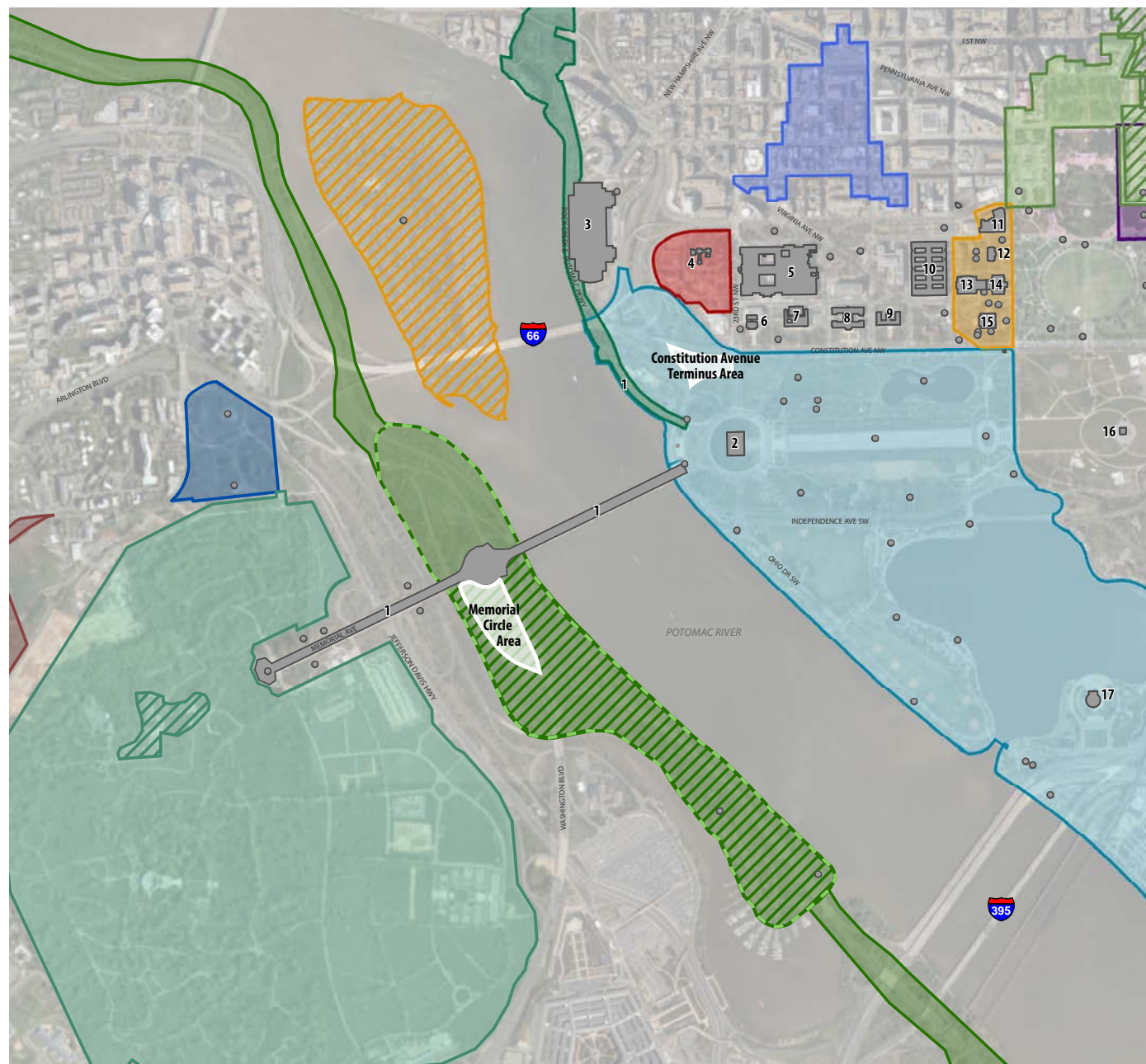
- ▶ Soils
- ▶ Vegetation
- ▶ Water Resources
- ▶ Stormwater
- ▶ Floodplains

Section 106 Participants

- ▶ District of Columbia and Virginia State Historic Preservation Offices
- ▶ National Capital Memorial Advisory Commission
- ▶ Advisory Council on Historic Preservation
- ▶ National Capital Planning Commission
- ▶ U.S. Commission of Fine Arts
- ▶ Arlington National Cemetery
- ▶ Arlington County
- ▶ Fort Myer
- ▶ Preservation Organizations and Other Interested Parties
- ▶ General Public



Historic Resources in the Vicinity of Sites Under Consideration



Legend

- Arlington House, The Robert E. Lee Memorial
 - Arlington National Cemetery Historic District
 - Arlington Ridge Park
 - East & West Potomac Parks Historic District
 - Fifteenth Street Financial Historic District
 - Fort Myer Historic District
 - George Washington Memorial Parkway (GWMP)
 - GWMP Mount Vernon Memorial Highway
 - George Washington University/Old West End Historic District
 - Lady Bird Johnson Park
 - Lafayette Square Historic District
 - Observatory Hill Historic District
 - Pennsylvania Avenue National Historic Site
 - Rock Creek & Potomac Parkway
 - Seventeenth Street Historic District
 - Theodore Roosevelt Island
 - Memorials
 - Historic Resources near the Potential Sites
- 1 Arlington Memorial Bridge and related features
 - 2 Lincoln Memorial (and Statue of Lincoln)
 - 3 John F. Kennedy Center for the Performing Arts
 - 4 Old Naval Observatory (National Observatory; Naval Museum of Hygiene; Naval Medical School)
 - 5 Harry S Truman Federal Building
 - 6 American Institute of Pharmacy (American Pharmacists Association)
 - 7 National Academy of Sciences
 - 8 Federal Reserve Building
 - 9 Public Health Service (Department of the Interior South Building)
 - 10 Department of the Interior (New Interior Building)
 - 11 Corcoran Gallery of Art
 - 12 American National Red Cross
 - 13 Constitution Hall (Daughters of the American Revolution)
 - 14 Daughters of the American Revolution, Memorial Continental Hall
 - 15 Pan American Union (Organization of American States)
 - 16 Washington Monument
 - 17 Jefferson Memorial

How Can You Submit Comments?

During this Meeting

- ▶ Comment Cards

After this Meeting

- ▶ On-line
- ▶ Written comments can be mailed

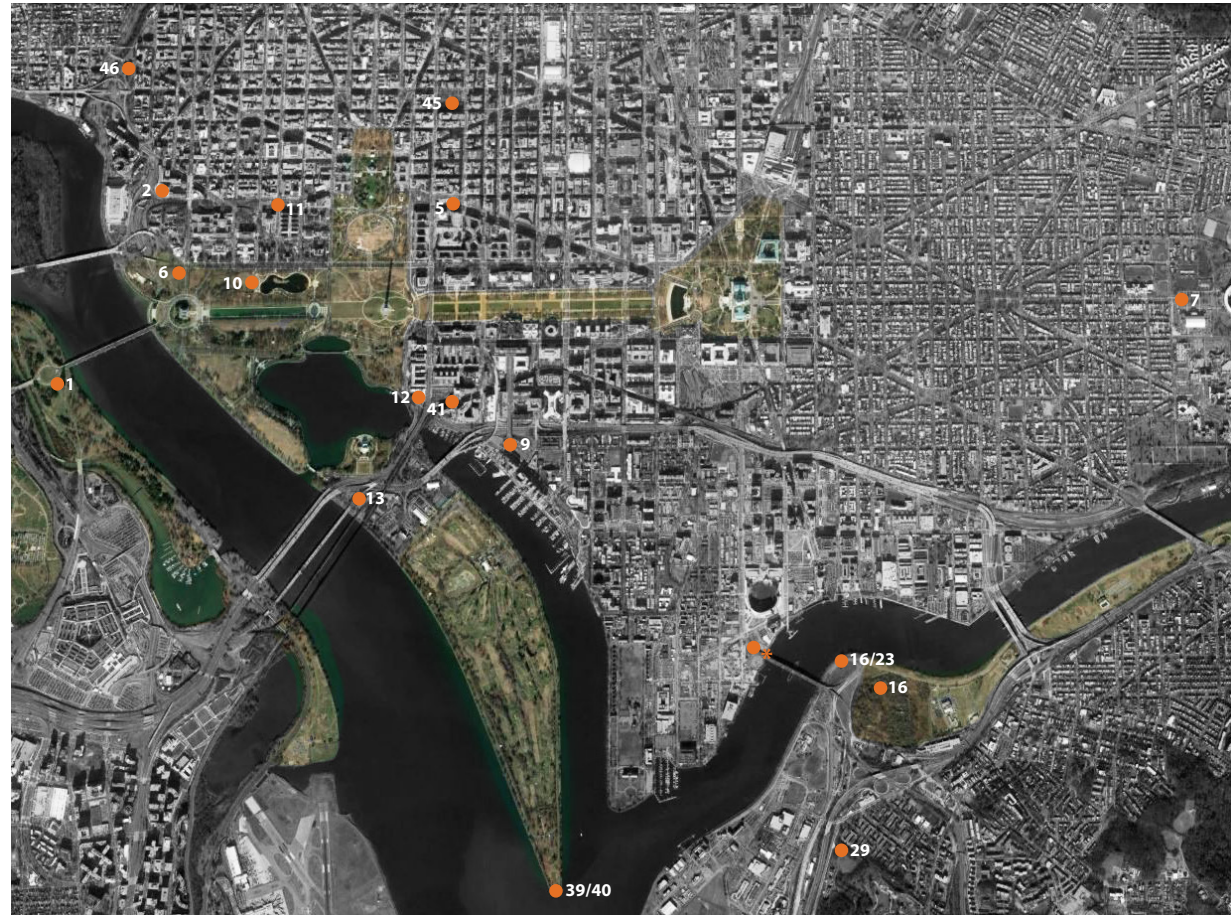
PROJECT DESCRIPTION

Claire Sale, AECOM and Skip Graffam, OLIN

Site Selection Process

Began evaluating sites in 2015

**Three rounds of evaluation
(total of 18 sites)**



Site Selection Process

Developed 9 preliminary site selection criteria:

- ▶ Within the District of Columbia
- ▶ At least 1.5 acres in size and able to accommodate a minimum of 80-100 people
- ▶ Accessible to pedestrians, transit, and visitors and meet ABAAS standards
- ▶ Near other visitor destinations
- ▶ Thematically connected to the memorial
- ▶ Minimal infrastructure improvements
- ▶ Appropriate environment for reflection
- ▶ Safe environment for both visitors and memorial features, and minimal potential maintenance issues of memorial features
- ▶ Resilient to the environment and the potential effects of climate change and enable sustainable design practices

Design Parameters

The following design parameters are intended to ensure the Memorial provides an appropriate commemorative experience as well as fit within the context of the site.

The Memorial should:

- ▶ Be compact in size with a footprint of less than 1.0 acre within a site of less than 2.0 acres
- ▶ Serve as more than a stand-alone object and provide a place of reflection
- ▶ Maintain a generally low horizontal profile
- ▶ Be integrated within, and complementary to, the existing landscape



Design Parameters

The Memorial should:

- ▶ Maintain existing trees, particularly designed rows or allees of trees, to the extent practicable
- ▶ Utilize existing circulation resources (sidewalks and pathways) to the extent practicable
- ▶ Provide minimal parking (likely to be universally accessible parking only)
- ▶ Be located outside of 100 year floodplain; if located within the 500 year floodplain, the Memorial must be flood resilient



Site Location Map



— RESERVE - - - AREA I

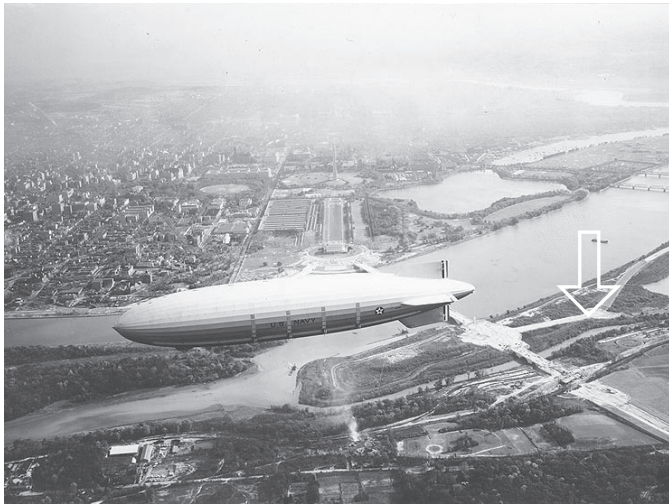
Memorial Circle Area

- ▶ 9.3 acres
- ▶ Identified as Site 1 in the *Memorials and Museums Master Plan*
- ▶ Memorial program accommodated
- ▶ Thematic link to Arlington National Cemetery, Women in Military Service for America Memorial, and Lincoln Memorial
- ▶ Access to transit and parking
- ▶ Modest challenges in terms of tranquility, infrastructure requirements, and pedestrian access due to traffic patterns and volumes



Memorial Circle Area

Historical Photographs



MEMORIAL CIRCLE SITE - 1931



MEMORIAL CIRCLE SITE - CIRCA 1940



MEMORIAL CIRCLE SITE - 1973

Memorial Circle Area

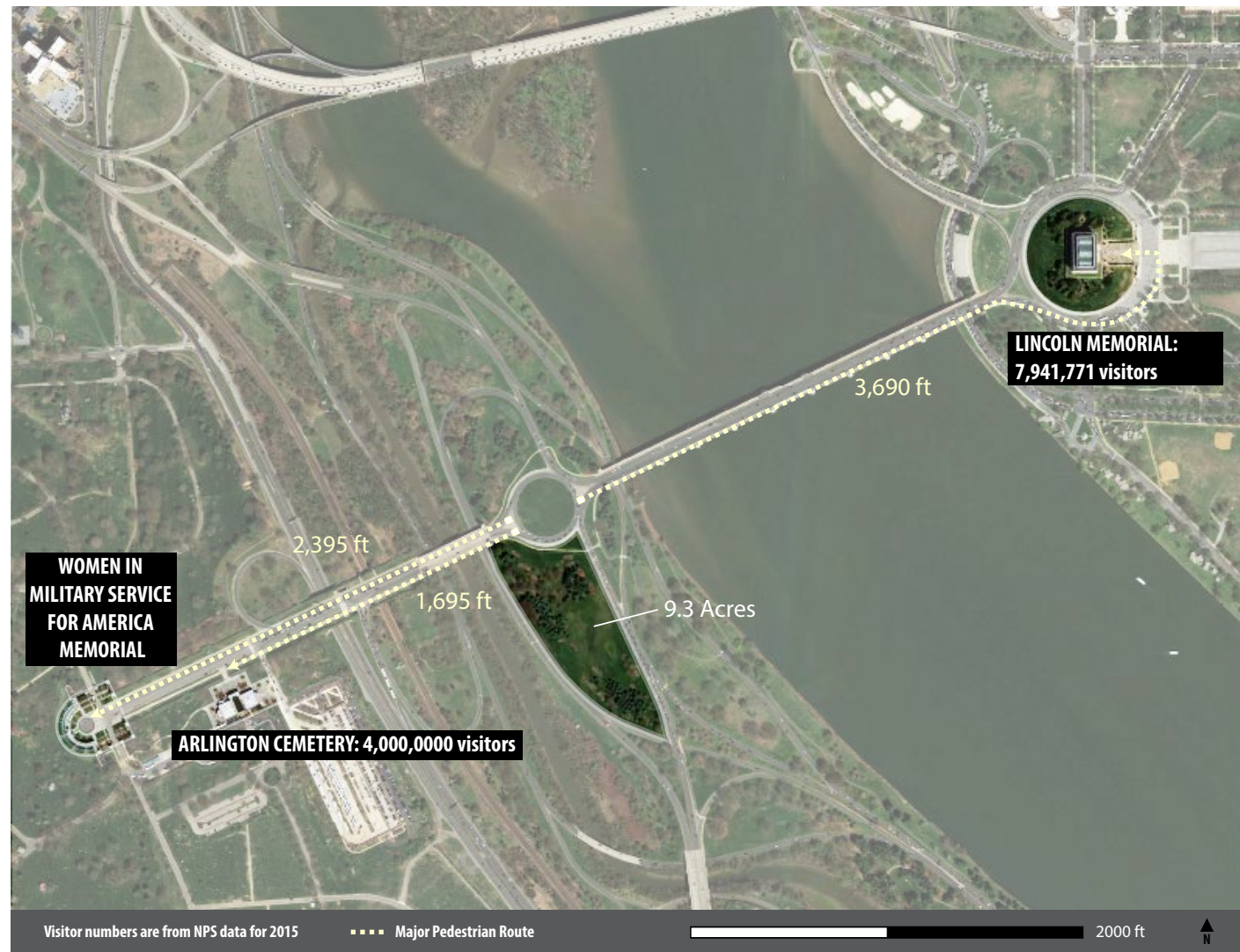
Current Photographs



Memorial Circle Area

Visitor Context

- ▶ Located on Columbia Island
- ▶ Associated with Arlington National Cemetery and Women in Military Service for America Memorial
- ▶ Attractions with four million visitors within a half mile



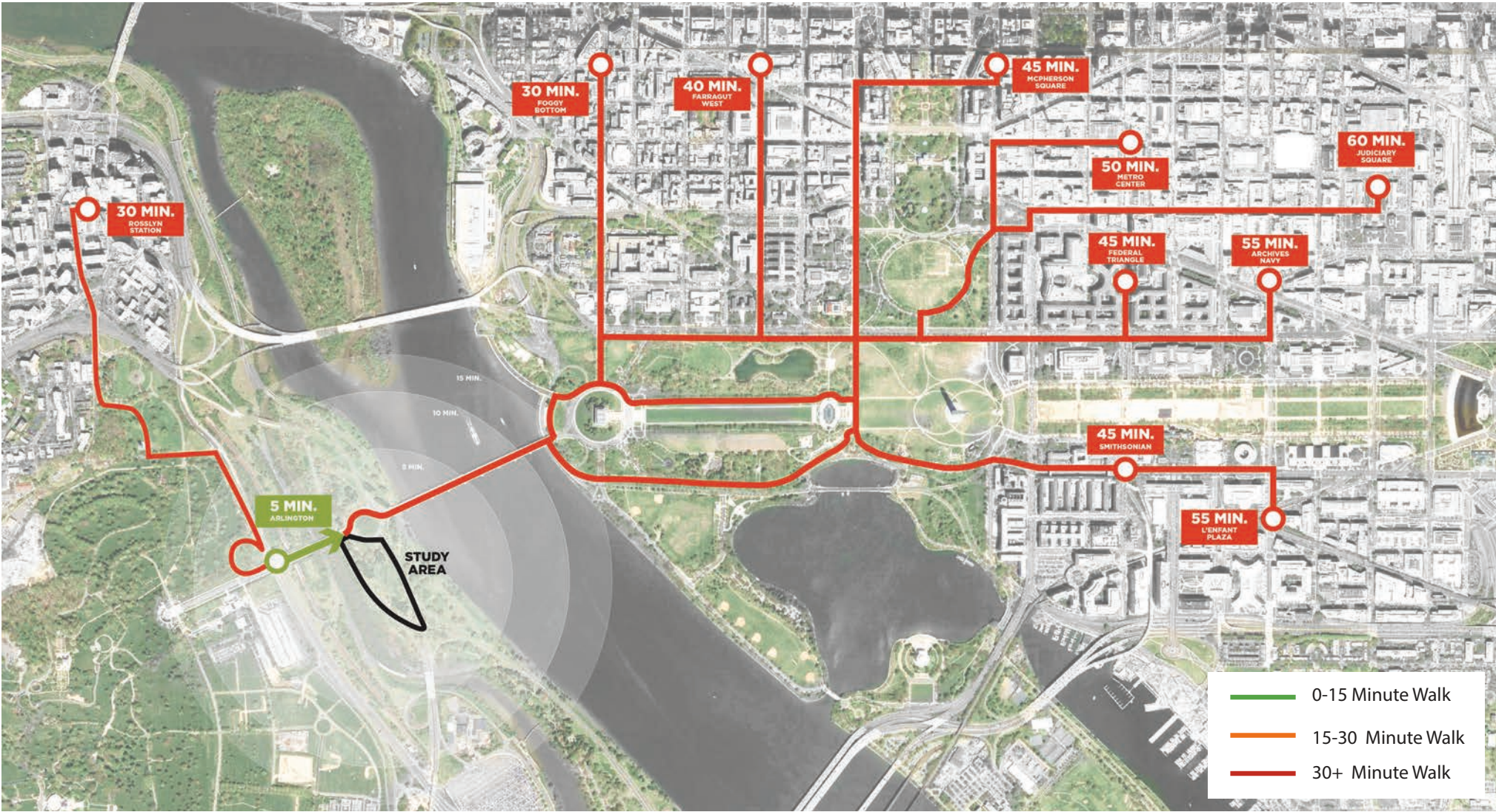
Memorial Circle Area

Thematic Context



Memorial Circle Area

Access from Metro



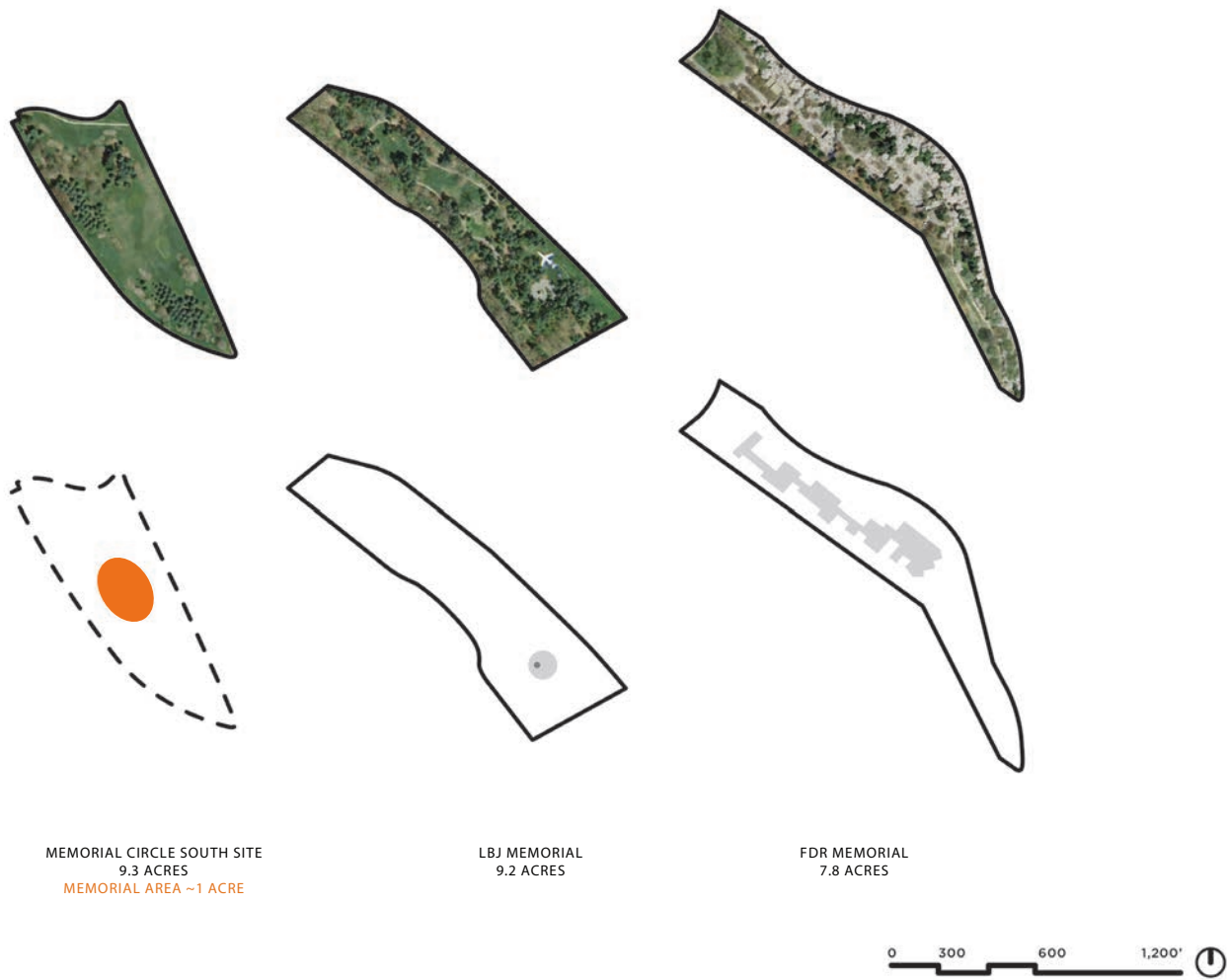
Memorial Circle Area

Circulation and Constraints



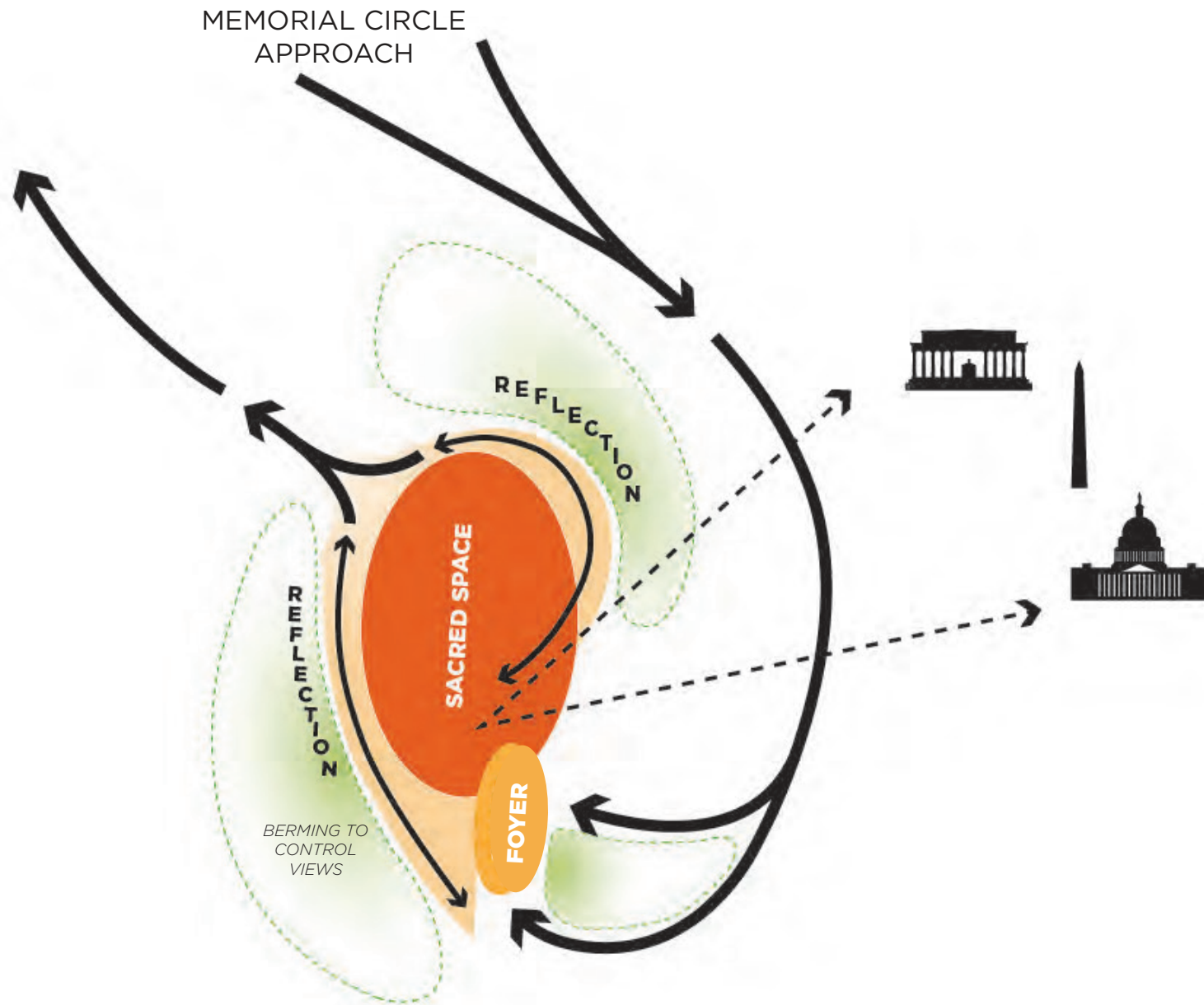
Memorial Circle Area

Scale Comparisons



Memorial Circle Area

Experiential Concept



Constitution Avenue Terminus Area

- ▶ 3.8 acres
- ▶ Identified as Site 6 in the *Memorials and Museums Master Plan*
- ▶ Desired program accommodated to a high level
- ▶ Thematic nexus to Vietnam Veterans Memorial and other 20th Century war memorials, including the Korean War Memorial and the World War II Memorial
- ▶ High visibility and access to other nearby attractions
- ▶ Adjacent to U.S. Institute of Peace
- ▶ Minor challenges in terms of resiliency due to floodplain location are being addressed by the Army Corps of Engineers

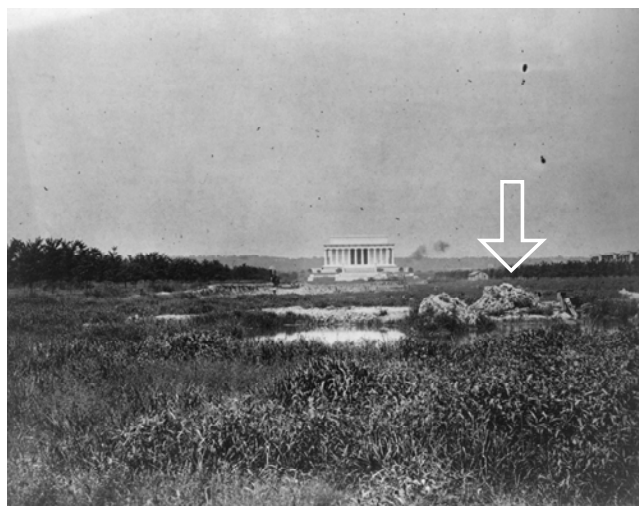


Constitution Avenue Terminus Area

Historical Photographs



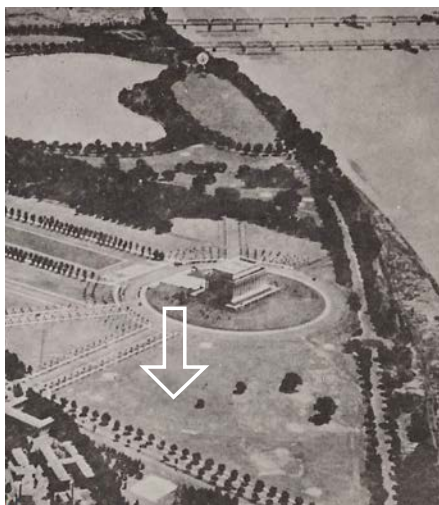
CONSTITUTION AVENUE SITE - MID 19TH CENTURY



CONSTITUTION AVENUE SITE - 1917



CONSTITUTION AVENUE SITE - 1919



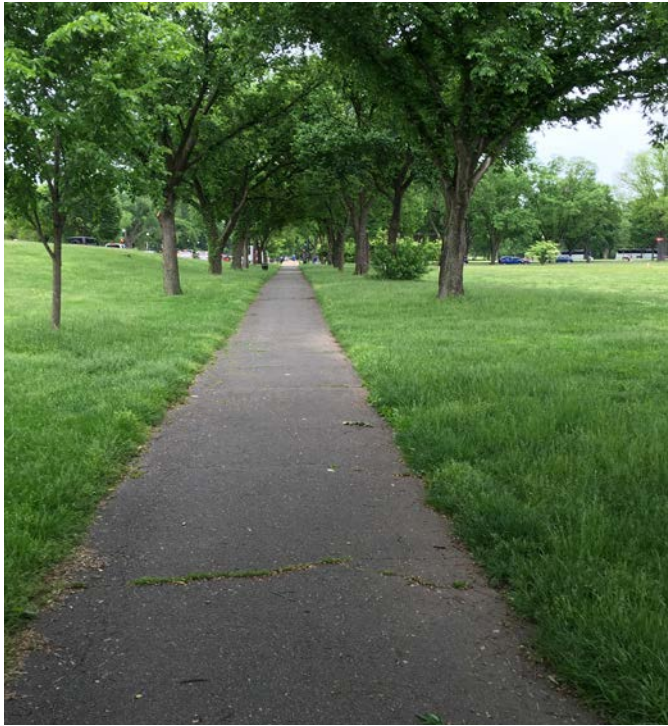
CONSTITUTION AVENUE SITE - 1925



CONSTITUTION AVENUE SITE - 1935

Constitution Avenue Terminus Area

Current Photographs



Constitution Avenue Terminus Area

Visitor Context

- ▶ Located beside the Lincoln Memorial and Vietnam Veterans Memorial
- ▶ Associated with the National Mall
- ▶ Attractions with eight million visitors within a half mile (18 million visitors cumulatively)



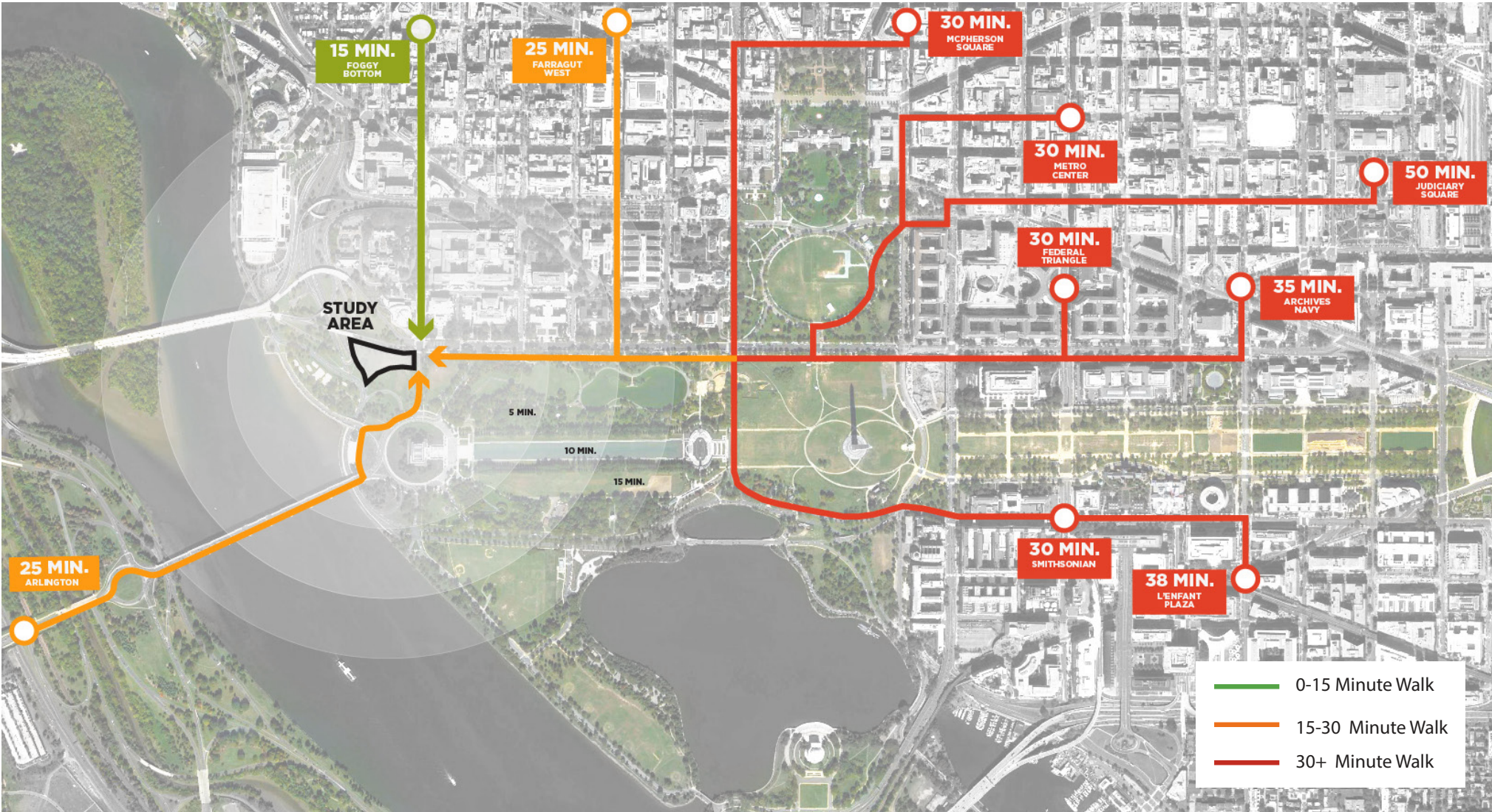
Constitution Avenue Terminus Area

Thematic Context



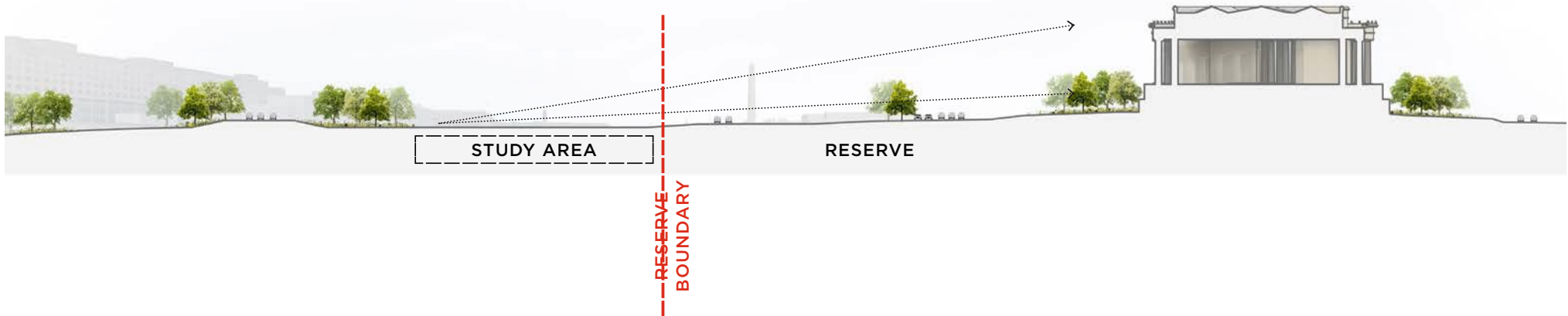
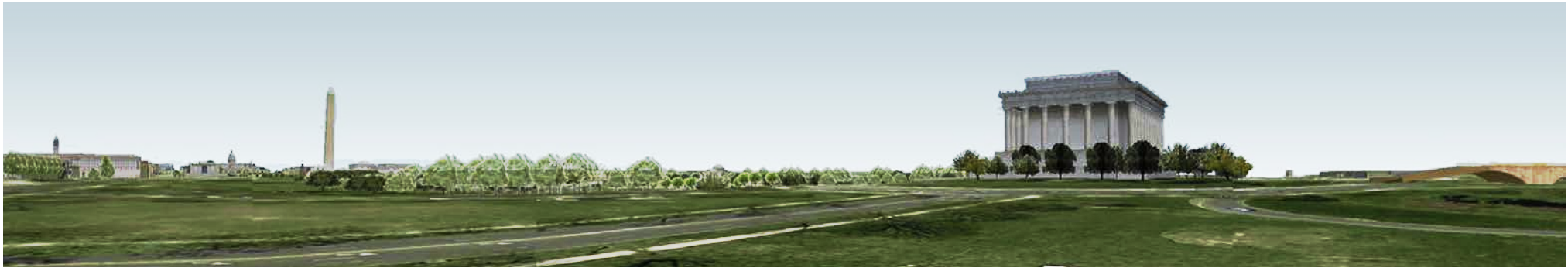
Constitution Avenue Terminus Area

Access from Metro



Constitution Avenue Terminus Area

Existing Section



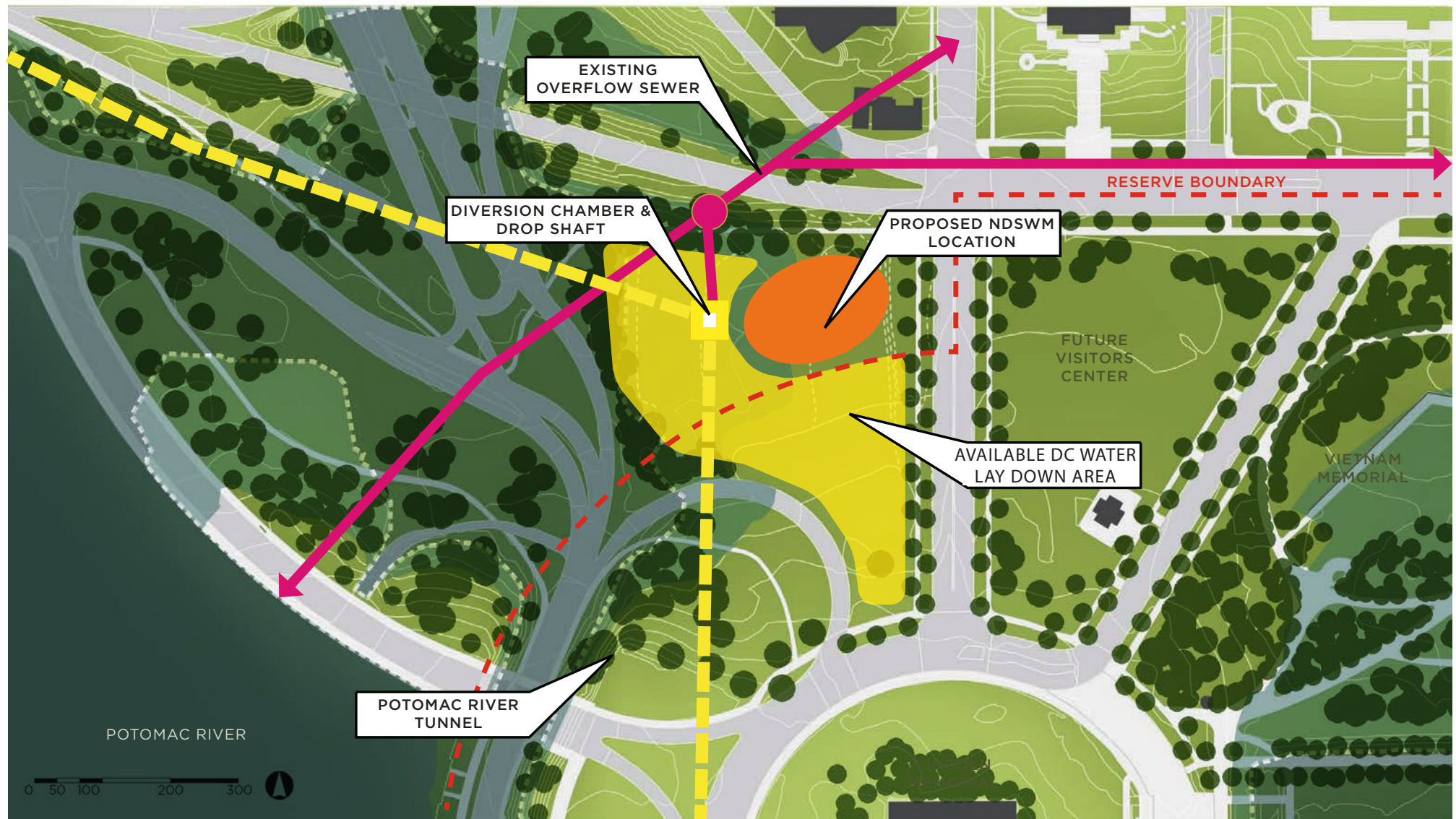
Constitution Avenue Terminus Area

Circulation and Constraints



Constitution Avenue Terminus Area

Example of DC Water Potomac River Tunnel Project Configuration at the Site



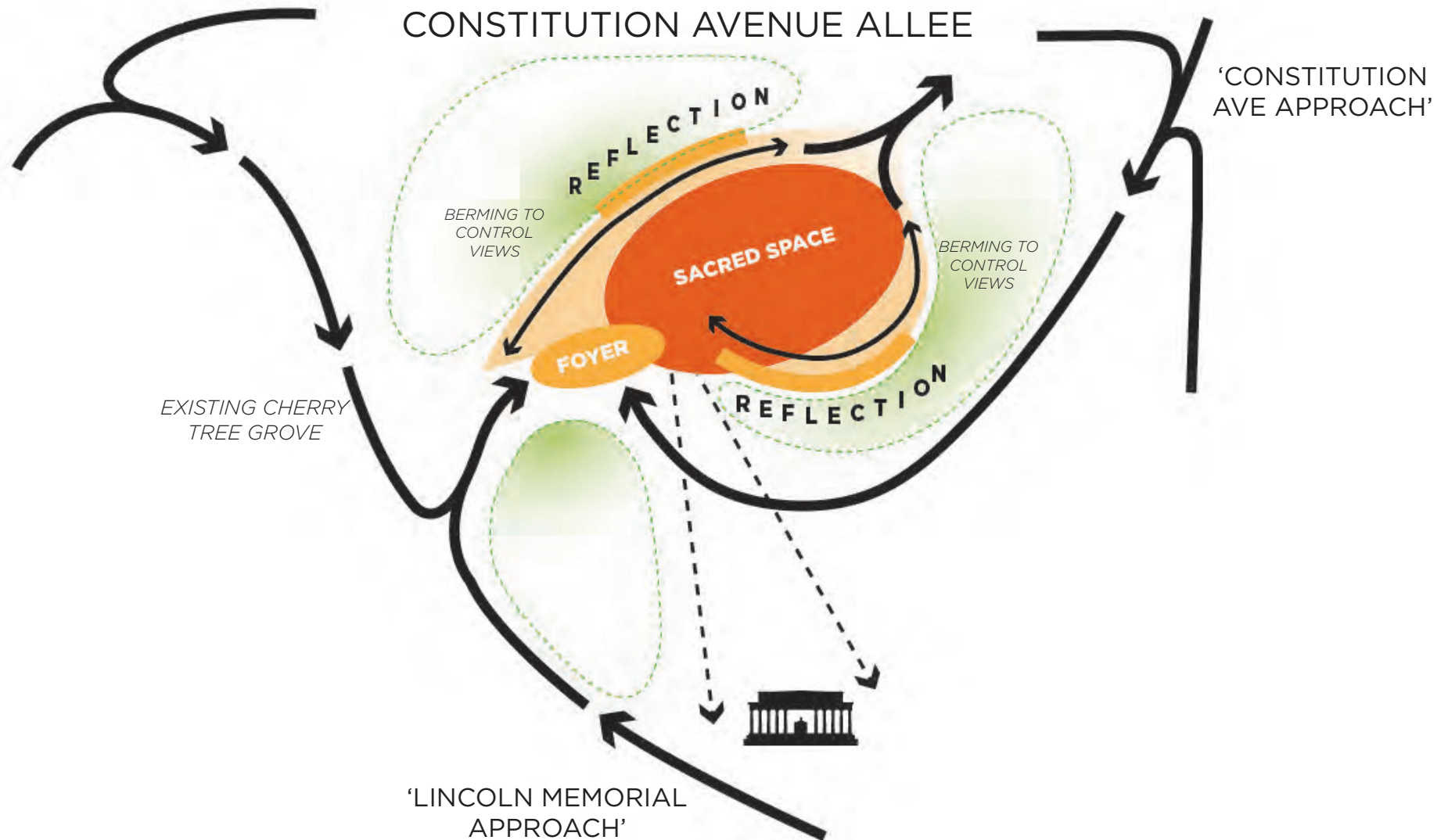
Constitution Avenue Terminus Area

Scale Comparisons



Constitution Avenue Terminus Area

Experiential Concept



OPPORTUNITY FOR PUBLIC COMMENT

Comment Note

Please Note:

Before including your address, phone number, e-mail address, or other personal identifying information in your comment, you should be aware that your entire comment – including your personal identifying information – may be made publicly available at any time. While you can ask us in your comment to withhold your personal identifying information from public review, we cannot guarantee that we will be able to do so.

How Can You Submit Comments?

During this Meeting

- ▶ Comment Cards

After this Meeting

- ▶ **On-line:** Submit comments by **July 24, 2017** at
<https://parkplanning.nps.gov/projectHome.cfm?projectId=62216>
- ▶ **Written comments can be mailed to:**
 - Glenn DeMarr
 - Attn: Desert Storm War Memorial EA
 - National Park Service
 - National Capital Region
 - 1100 Ohio Dr. SW
 - Washington, DC 20242
- ▶ **Mailed comments** must be postmarked by **July 24, 2017** to receive consideration