

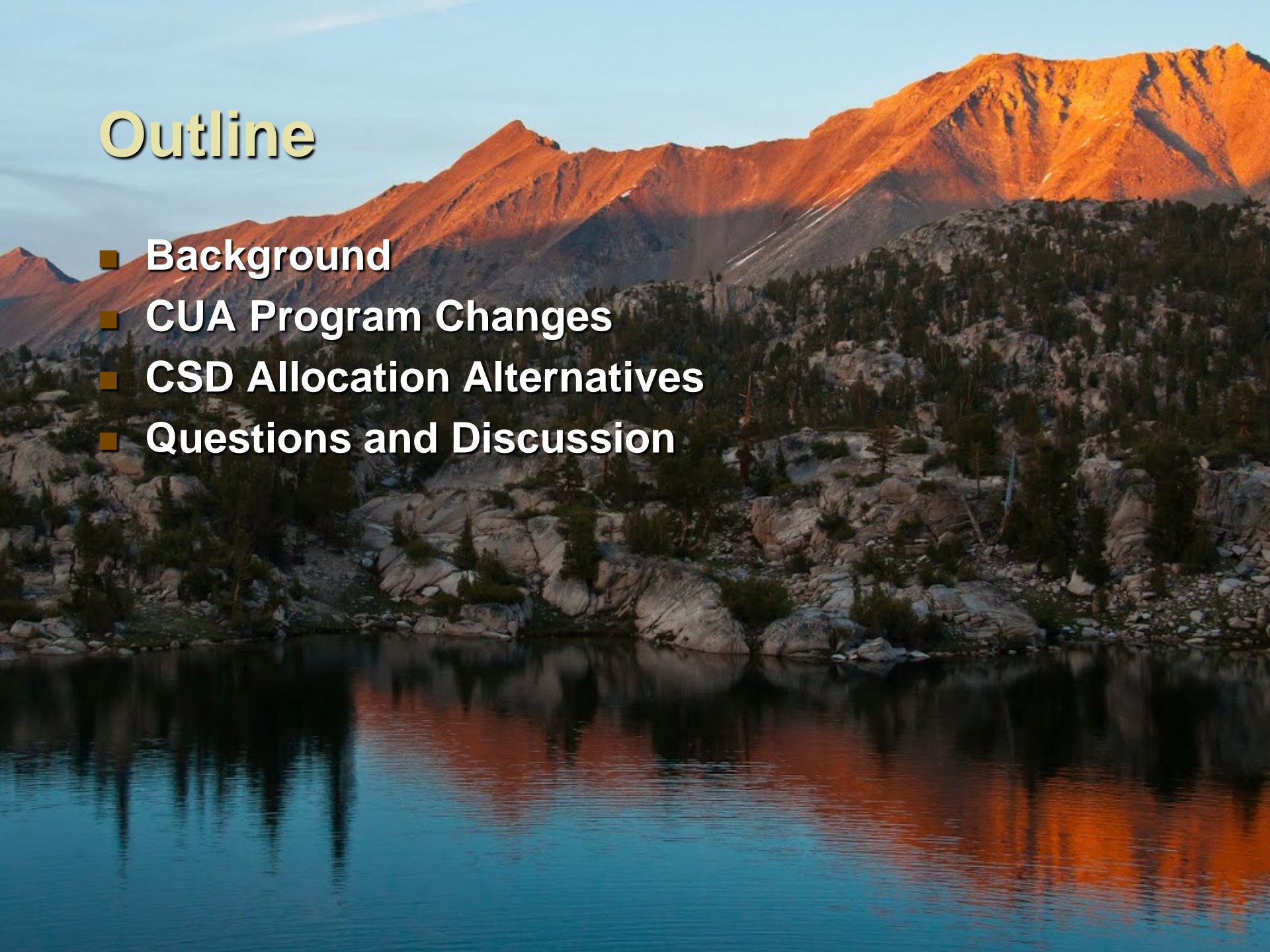
Commercial use under the Wilderness Stewardship Plan

Sequoia and Kings Canyon National Parks

**CSD Allocation Plan and CUA
Program Changes**

Outline

- Background
- CUA Program Changes
- CSD Allocation Alternatives
- Questions and Discussion



Background

- Wilderness Stewardship Plan, 2015
- Initial discussions w/wilderness operators, 2016
- Finalize process w/public input, 2017
- WSP-END implementation, 2018
 - Commercial Service Day (CSD) allocations in place
 - January 2018: Two-year CUAs

Wilderness CUA Application Process

- Application window for wilderness CUAs
 - July 17, 2017 to October 20, 2017 for 2018-2019
- CUA for either wilderness or front-country use
 - Transitory use of front-country okay
- CUA for multiple authorized activities

CUA Fee Changes

- SEKI moving to NPS Market Price method
- For revenue generated in SEKI:

Gross Receipts	Fee
Under \$250K	3%
Next \$250K	4%
Over \$500K	5%

- Non-refundable application fee, deducted from final fee
- Operators report gross receipts each year in January
- SEKI issues bill of collection

Reporting

- Monthly Visitor Use Statistics by 15th of each month
 - Submit via email
 - Separate monthly report for each service type
- Report all trips within SEKI boundary
 - No CSD required for Administrative Trips
 - No CSD required for Educational Trips
 - No CSD required for de minimis entry

CSD Limits

- Creates four categories of CSDs

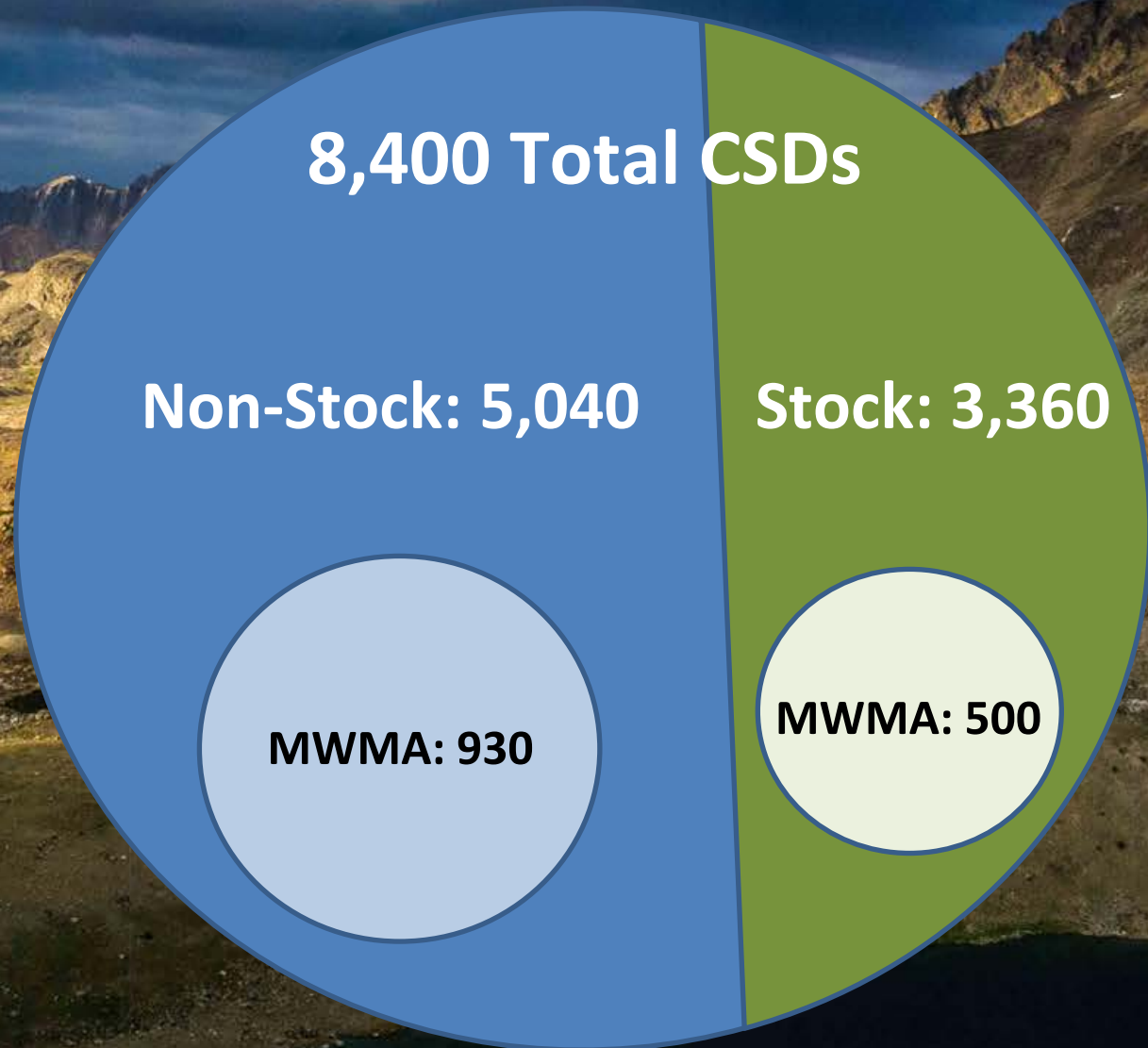
Stock

Non-Stock

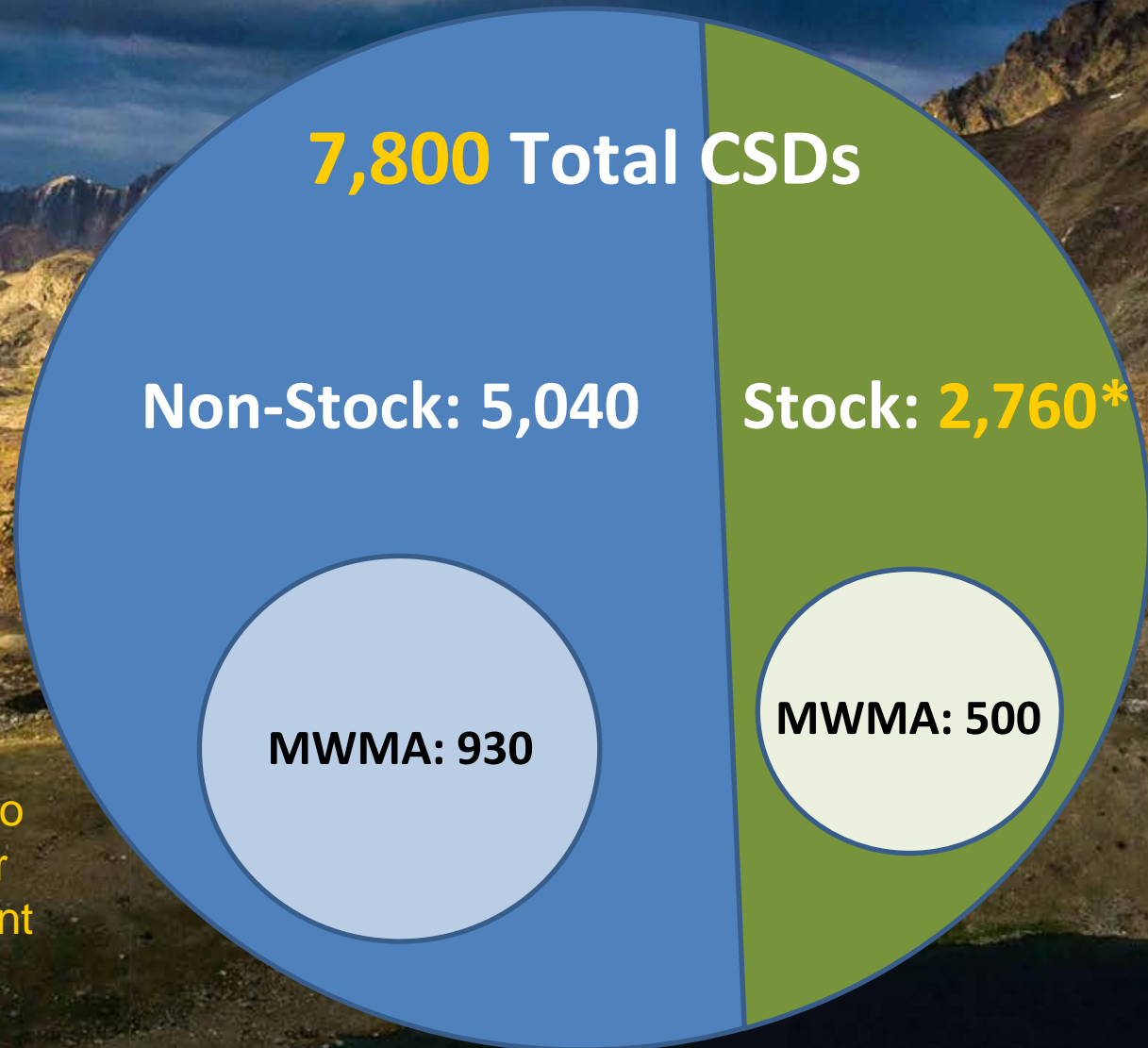
Wilderness
Wide (WW)

Mount Whitney
Management
Area (MWMA)

CSD Allocations (total)



CSD Allocations (CUA)



*Reduced by 600 to allow concessioner to operate at current levels

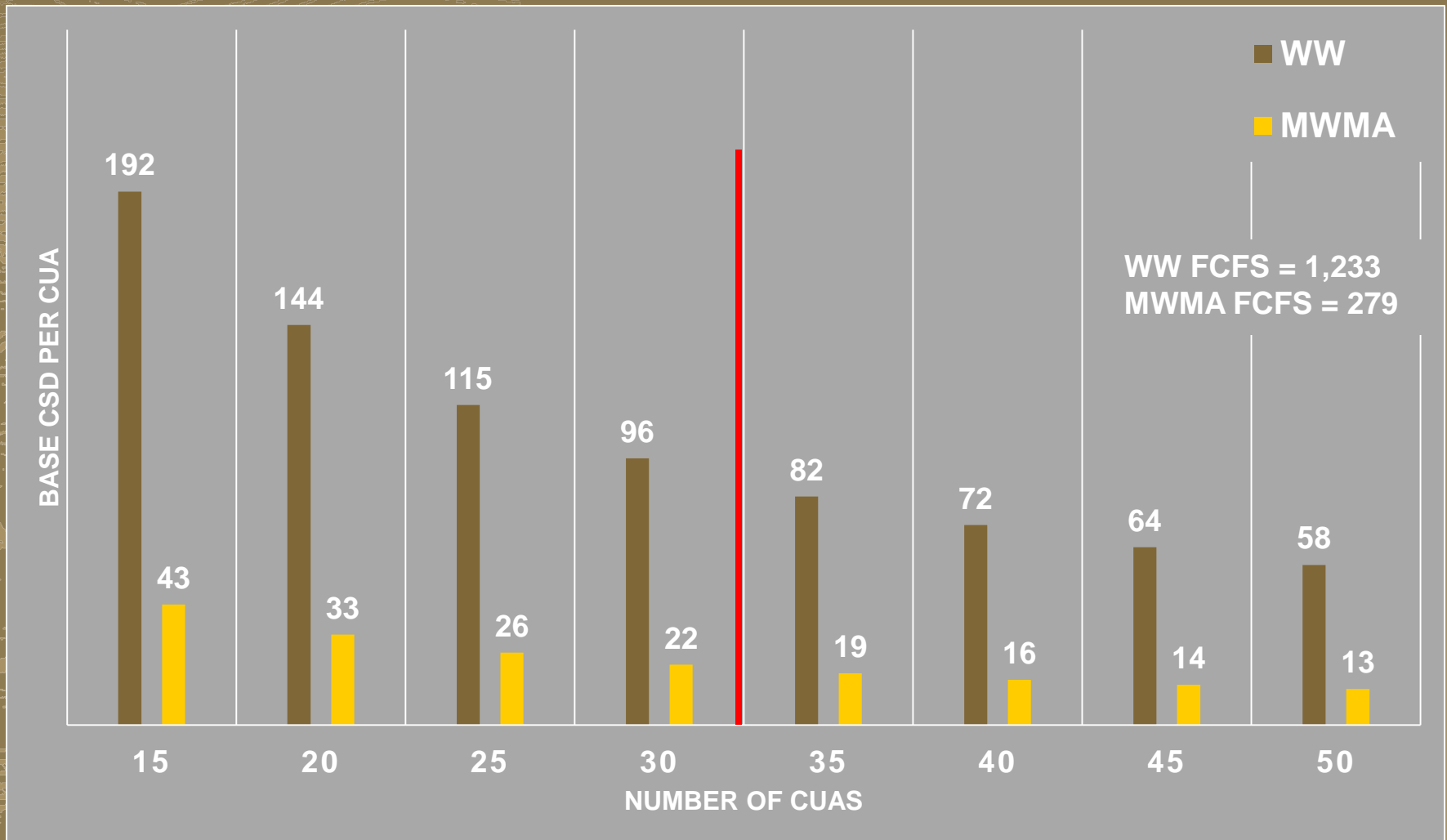
Allocation Alternatives

1. Unlimited CUAs, Hybrid CSD allocation
 - No limit on CUAs
 - 70% of CSDs allocated evenly
 - 30% of CSDs allocated first come, first served basis
2. Limited CUAs, Hybrid CSD allocation
 - Limit CUAs to number of operators at time of WSP
 - 70% of CSDs allocated evenly
 - 30% of CSDs allocated first come, first served basis
3. Limited CUAs, Fixed CSD allocation
 - Limit CUAs to number of operators at time of WSP
 - 100% of CSDs allocated to CUAs at High / Low use levels

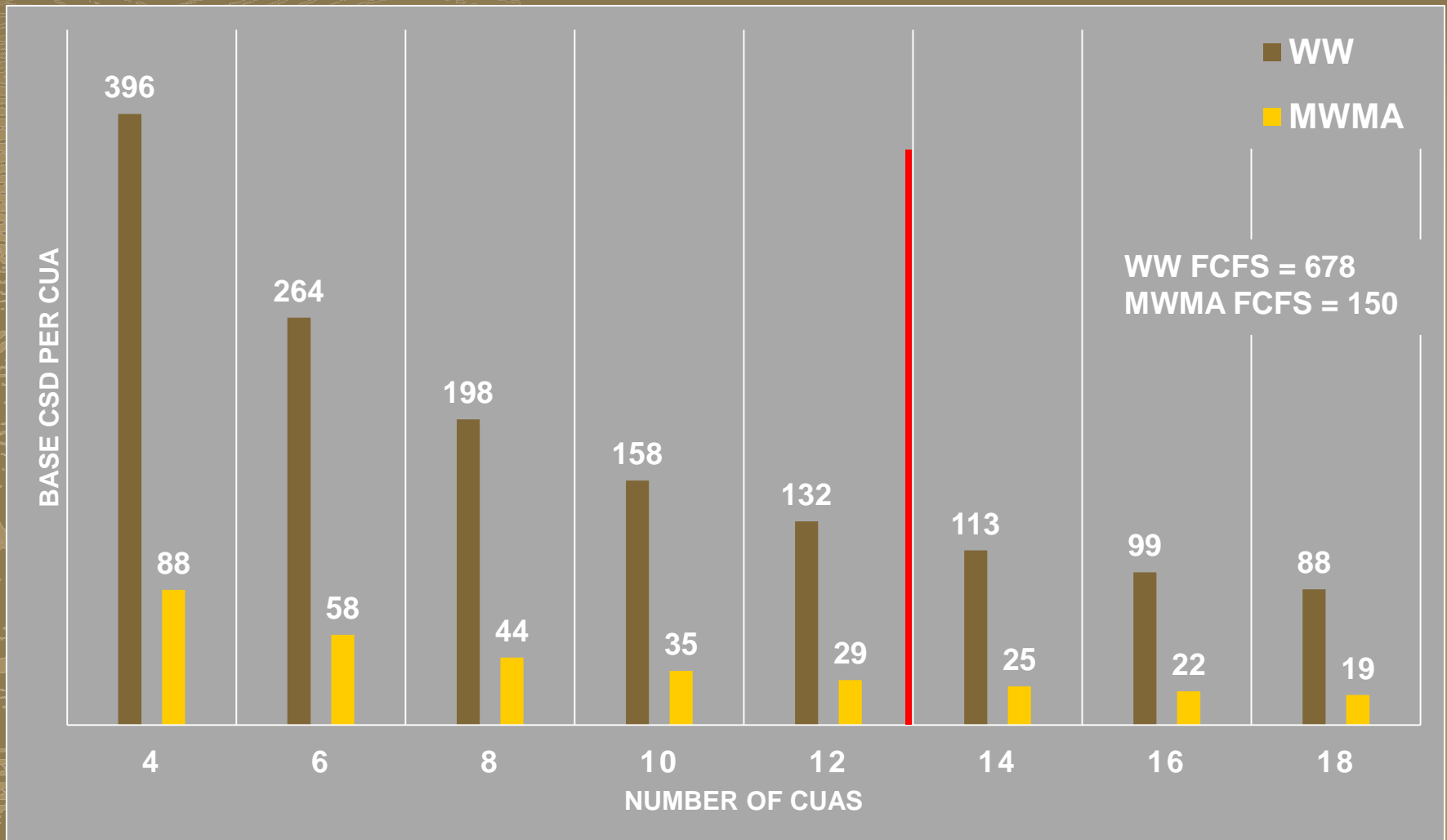
Alternative 1: Description

- No limit on CUAs
- 70% CSDs allocated evenly (70% CSDs / total CUAs) – Base CSDs
- 30% CSDs allocated on first come, first served basis – FCFS CSDs

Alt 1: Non-Stock CSD Allocation



Alt 1: Stock CSD Allocation

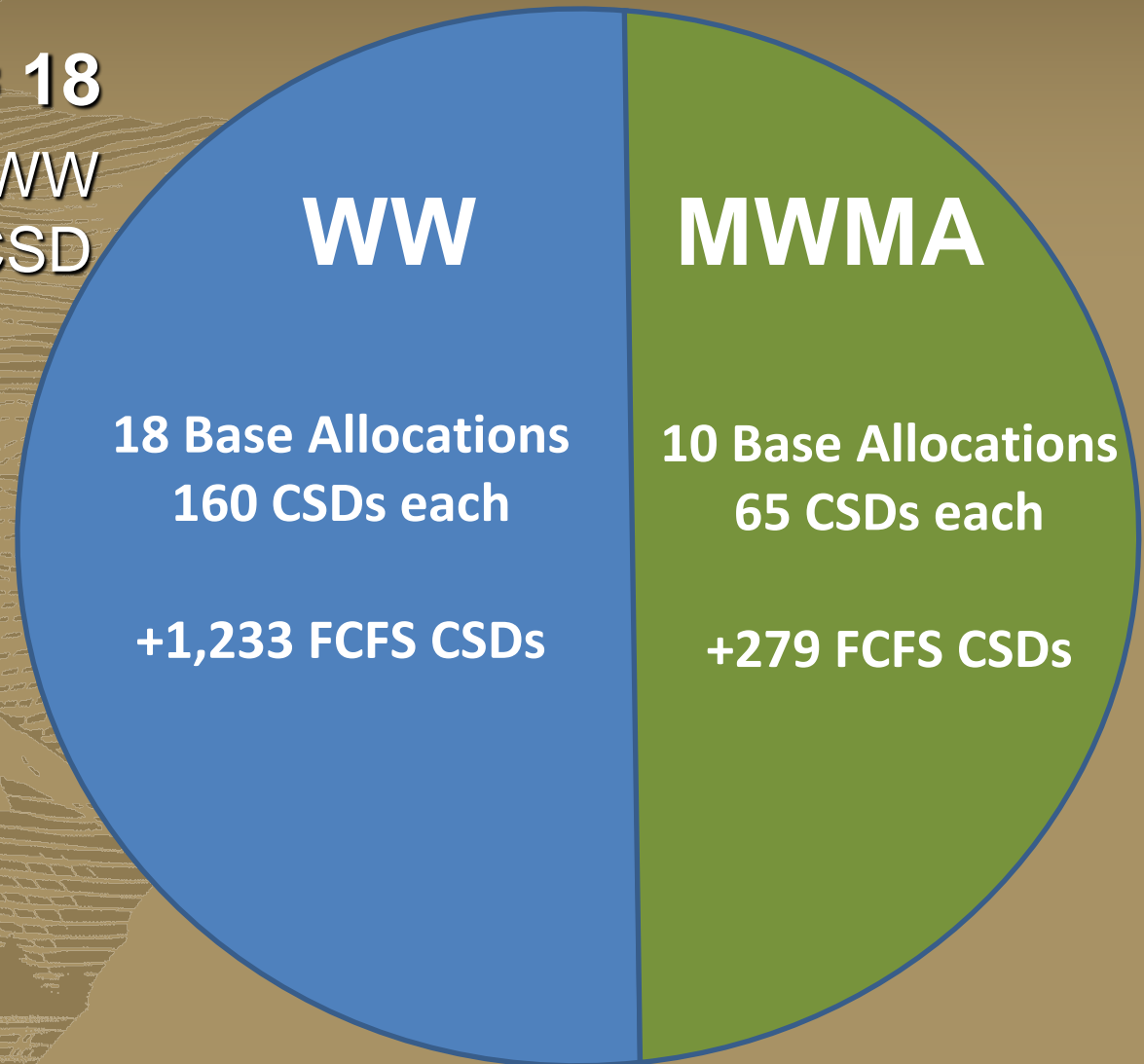


Alternative 2: Description

- Limit CUAs to WSP levels
 - 18 non-stock
 - 12 stock
- CUA selection based on qualifications
- 70% CSDs allocated evenly (70% CSDs / total CUAs) – Base CSDs
 - 18 non-stock WW, 10 MWMA
 - 12 stock WW, 4 MWMA
- 30% CSDs allocated on first come, first served basis – FCFS CSDs

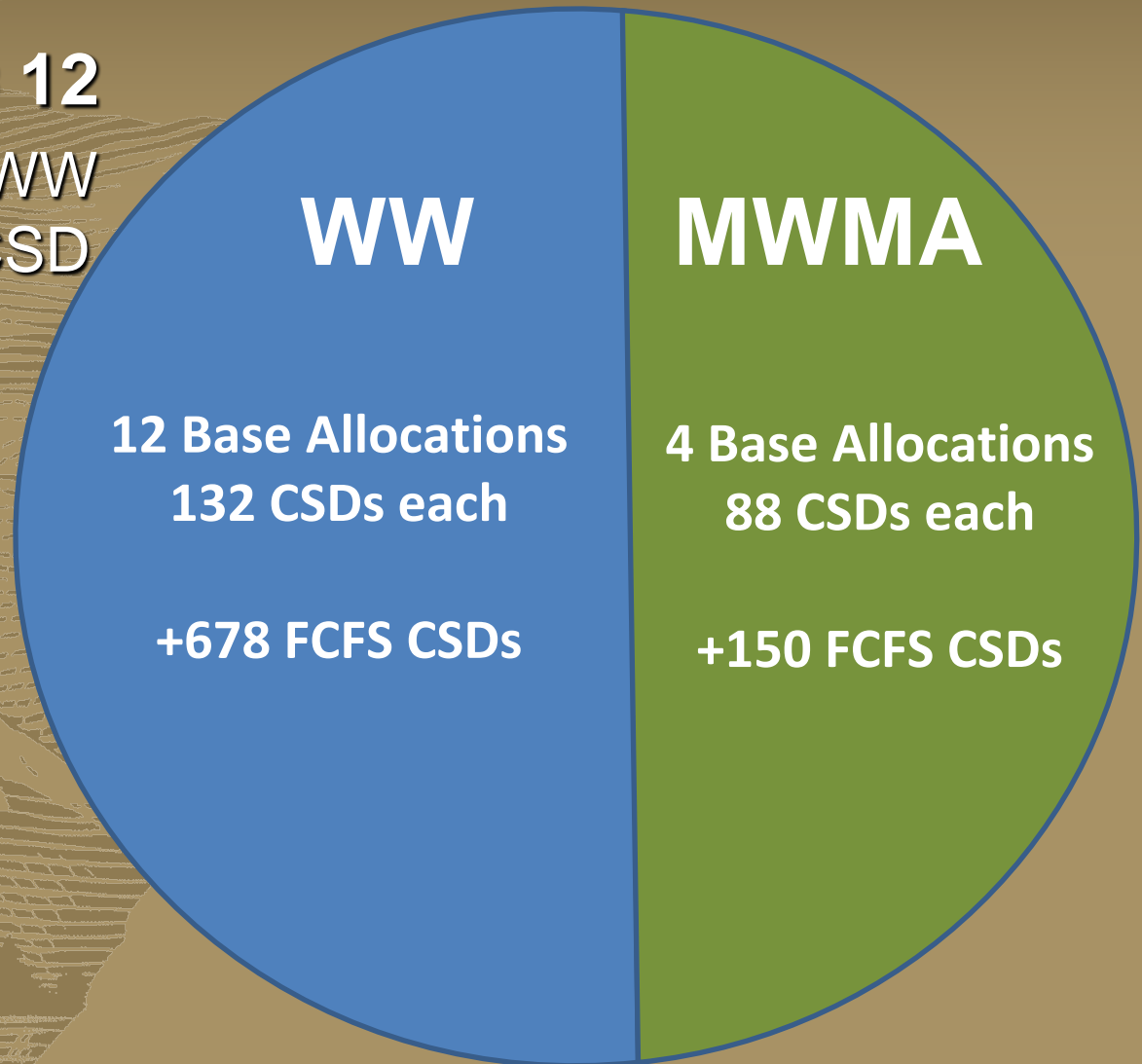
Alt 2: Non-Stock CSD Allocation

- **Total CUAs = 18**
- CUA may have WW and/or MWMA CSD Allocations



Alt 2: Stock CSD Allocation

- **Total CUAs = 12**
- CUA may have WW and/or MWMA CSD Allocations

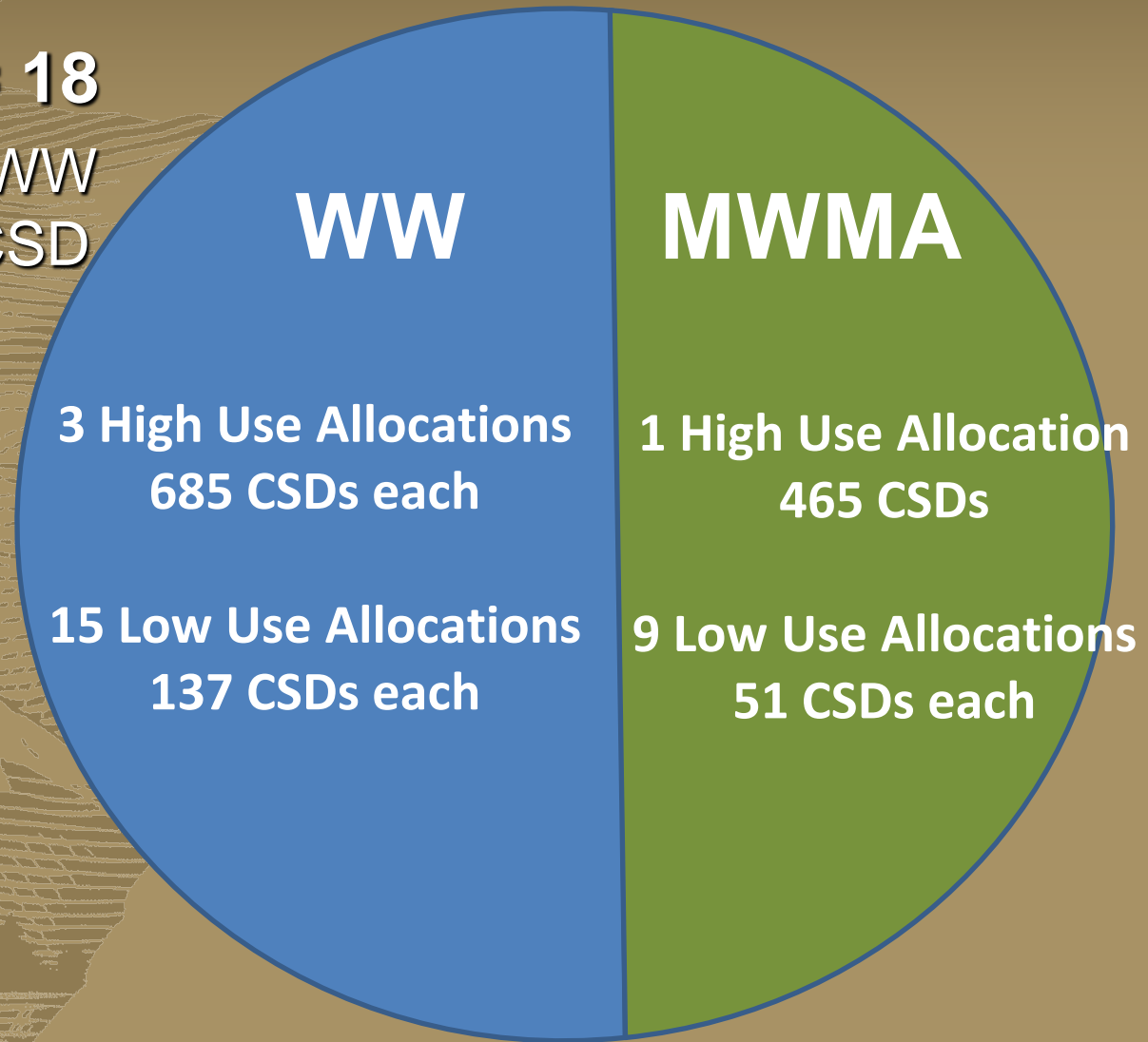


Alternative 3: Description

- Limit CUAs to WSP levels
 - 18 non-stock
 - 12 stock
- CUA selection based on qualifications
- CSDs allocated at high and low-use fixed levels
 - 18 non-stock WW: 3 high-use, 15 low-use
 - 10 non-stock MWMA: 1 high-use, 9 low-use
 - 12 stock WW: 3 high-use, 9 low-use
 - 4 stock MWMA: 1 high-use, 3 low-use

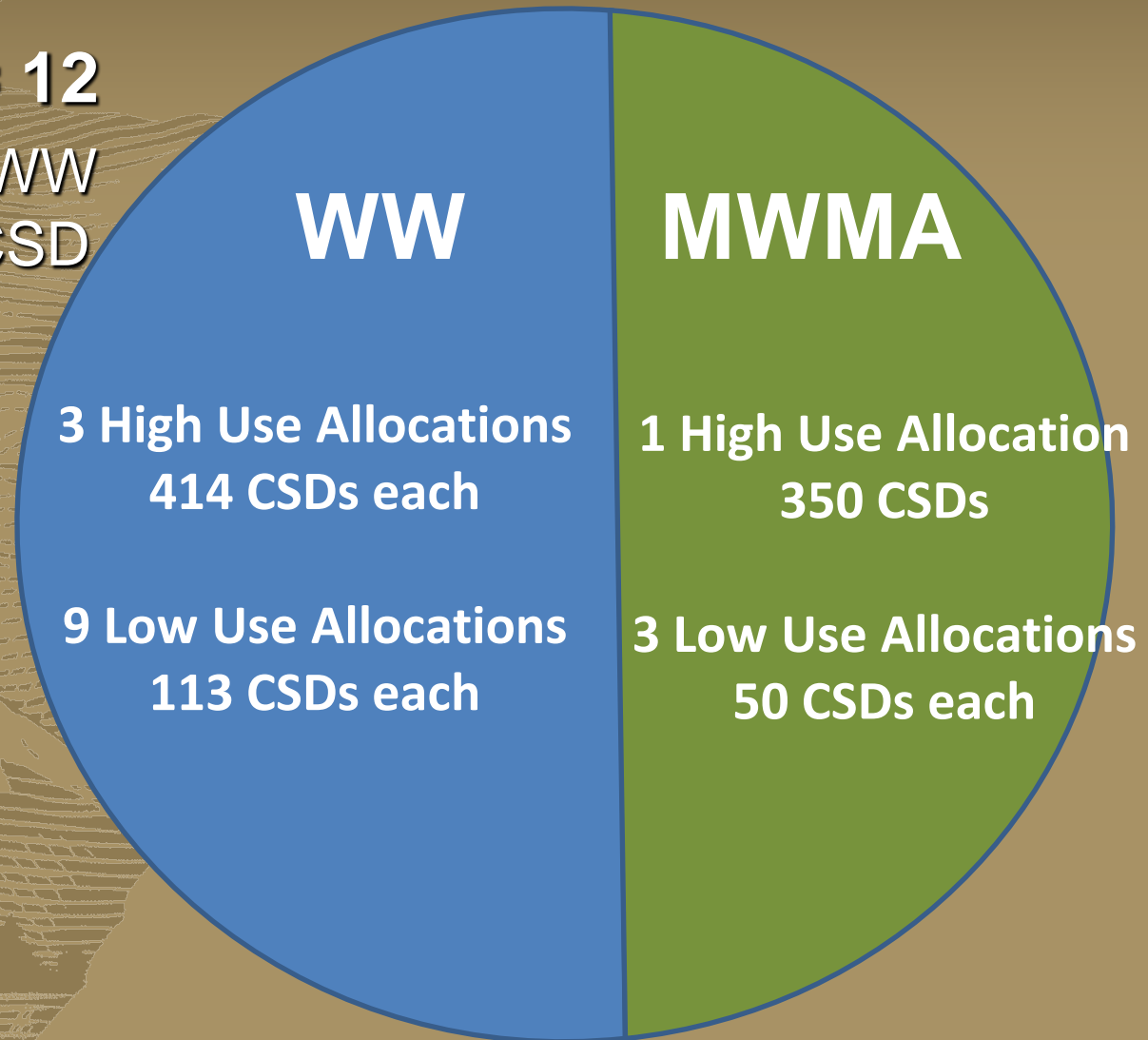
Alt 3: Non-Stock CSD Allocation

- **Total CUAs = 18**
- CUA may have WW and/or MWMA CSD Allocations



Alt 3: Stock CSD Allocation

- **Total CUAs = 12**
- CUA may have WW and/or MWMA CSD Allocations



Proposed Technical Correction to CSD Numbers

- Stock: Identified and fixed errors in query syntax
 - Stock night to CSD conversion in MWMA
 - Data with null values in 'comment' field
 - Two Non-MWMA locations included in MWMA
 - Some Bearpaw HSC records included
 - Client per animal ratio
- Non-Stock: Included SPC commercial use
- Detailed memo available on PEPC for public comment in 3-4 weeks

Proposed Change from END

	Wilderness-Wide	Mount Whitney	Total
Non-Stock	+90	+45	+135
Stock	-60	+150	+90
Total	+30	+195	+225

Proposed Revised CSD Allocations

	Wilderness-Wide	Mount Whitney	Total
Non-Stock	4,200	975	5,175
Stock	2,800	650	3,450
Total	7,000*	1,625*	8,625

*7,004 and 1,621 prior to rounding

Questions and Discussion

- Your input, reaction, and questions are important!
- Please submit questions and comments for the record directly in PEPC.
- Contacts:
 - jason_watkins@nps.gov, or 559-565-3107
 - monica_rinne@nps.gov, or 559-565-3103
 - seki_concessions@nps.gov