

## **DWIGHT D. EISENHOWER MEMORIAL**

**COMMISSION OF FINE ARTS**

REVISED FINAL DESIGN SUBMISSION

SUBMISSION DATE: MAY 4, 2017

MEETING DATE: MAY 18, 2017





## TABLE OF CONTENTS

- 1.0 DESIGN REVISION SUMMARY
- 2.0 COMMEMORATIVE ART UPDATE
- 3.0 LBJ PROMENADE UPDATE
- 4.0 LANDSCAPE DESIGN



## DESIGN REVISIONS SUMMARY

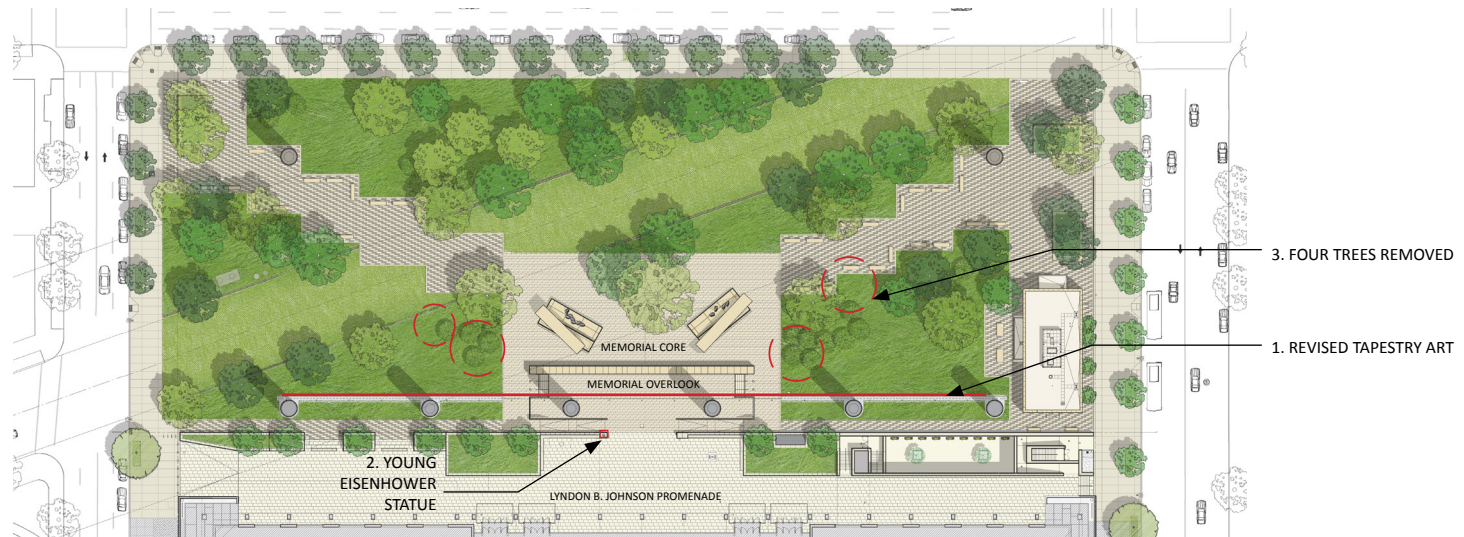
In January 2017, a revised design of the Eisenhower Memorial project was presented to the Commission of Fine Arts. The design changes included; a revised thematic context and art on the tapestry, relocating the Young Eisenhower statue to the Lyndon B. Johnson Promenade and removing four canopy trees from the landscape design. The Commission supported the revised concept and recommended the design team reconsider the location of the statue of Eisenhower as a youth and removal of the trees. The Commission requested a tapestry mock-up to review the image quality and legibility.

In response to the Commission comments, the design team has provided the following:

- A refined location and pose of the statue of Eisenhower as a young man to integrate this element more deliberately within the Memorial.
- A new tapestry mock-up as been created to demonstrate the landscape details and the treatment of the clouds in the stainless steel wire media in full size three panel mock-up.
- Additional visual studies were created to further demonstrate the visitor experience of the tapestry within the revised park landscape.



CURRENT DESIGN



CURRENT DESIGN



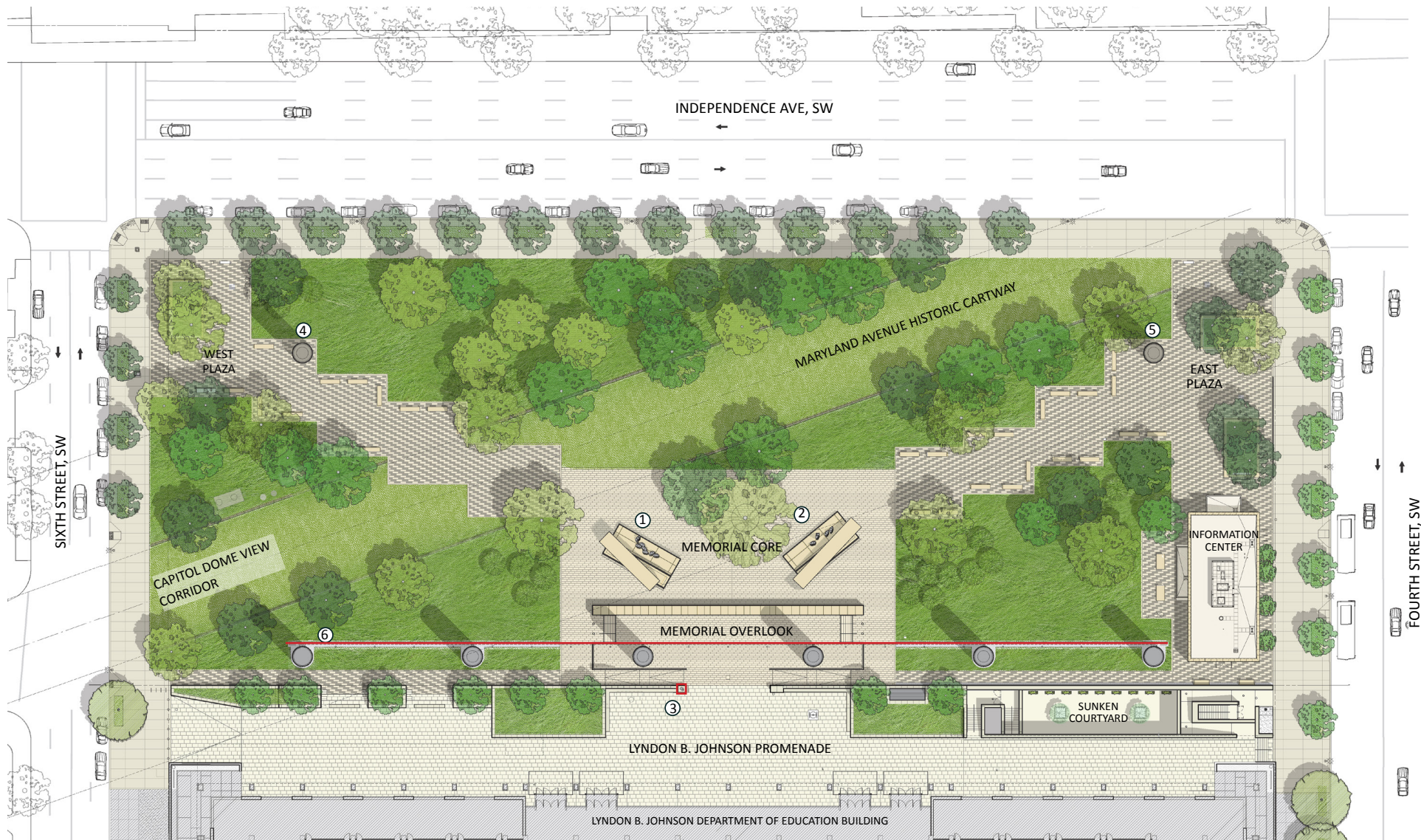


VIEW OF MEMORIAL CORE

CURRENT DESIGN

1.0 - DESIGN REVISION SUMMARY





- ① GENERAL EISENHOWER MEMORIAL ELEMENT
- ② PRESIDENT EISENHOWER MEMORIAL ELEMENT
- ③ **YOUNG EISENHOWER STATUE**
- ④ GENERAL EISENHOWER COLUMN
- ⑤ PRESIDENT EISENHOWER COLUMN
- ⑥ **SOUTH TAPESTRY**



SITE PLAN

## MEMORIAL TAPESTRY

The tapestry and colonnade are unique methods of memorialization presented for the Eisenhower Memorial. The tapestry serves as a commemorative memorial element as well as an urban site planning element, to create both a physical and symbolic context for Dwight D. Eisenhower.

The stainless steel tapestry, positioned at the southern perimeter of the site, frames the urban park. The artistic image on the tapestry, and the thematic context of the story of Eisenhower has been revised since 2015. The new tapestry image reflects the peaceful Normandy coastline, from the sea looking towards the land. The contemporary scene also includes Point du Hoc at the center, with Omaha Beach and Utah Beach, in remembrance of the sacrifices of D-Day. The coast of Normandy remains a symbolic reminder of this pivotal event that led to peace and shaped our nation's history in the years that followed. This hopeful image symbolically represents the peace Eisenhower won as Supreme Allied Commander and the peace he kept

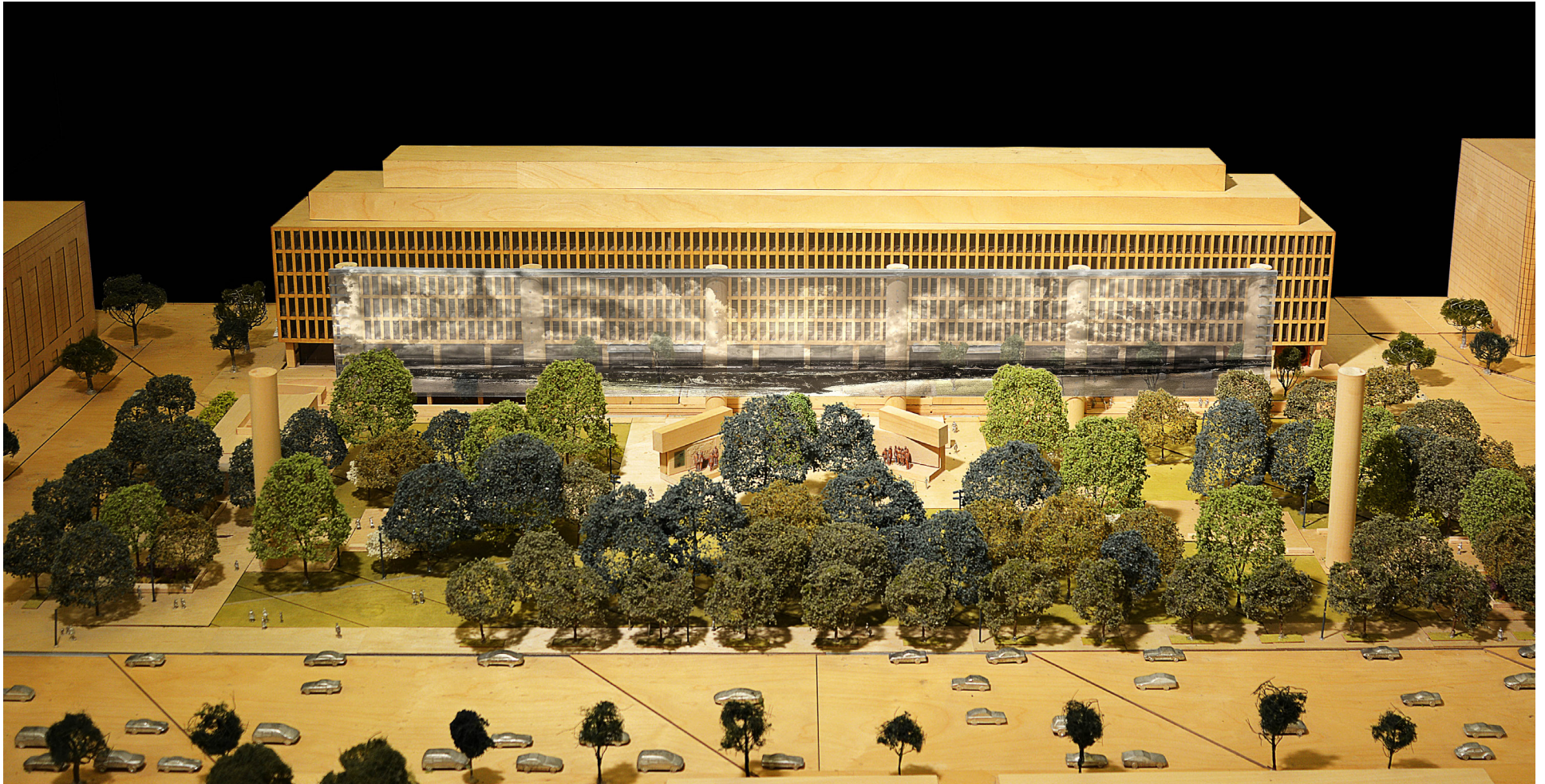
and nurtured as the 34th President during a unique time when the United States emerged on to the global stage. The tapestry frames the context of Eisenhower's service to the country and his enduring legacy as a key figure in the 20th century.

The tapestry is composed of stainless steel cable of various sizes welded to create a drawing through the use of line and transparency. The image is inherent to the tapestry design, providing a two-sided image (mirrored) which changes dramatically throughout the day with the passing light, from bright and reflective to dark as silhouette. The tapestry will be attached to a cable net structural system which spans between the colonnade. The tapestry will have vertical and horizontal seams at a width of 3 feet and 15 feet in vertical length.



PROPOSED NEW IMAGE FOR THE TAPESTRY





AERIAL VIEW OF THE MEMORIAL WITH THE REVISED TAPESTRY IMAGE



## MEMORIAL TAPESTRY MOCK-UP

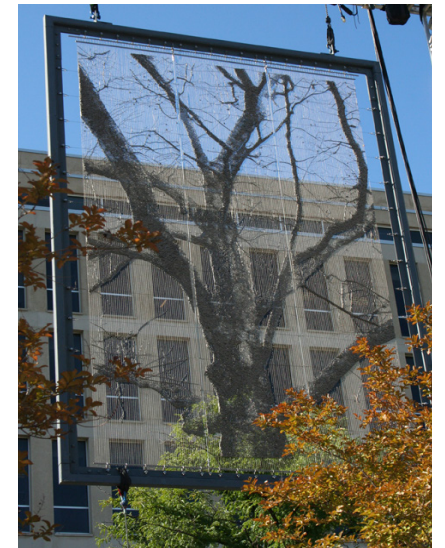
In September of 2011, a full scale proof of concept mock-up for three panels of the tapestry were displayed in front of the Department of Education building. The goal of the mock-up at the time was to demonstrate the artistic quality, imagery intent and transparency established for this important commemorative element. Following the initial mock-up, the design team further developed the CNC welding fabrication system, the panel engineering and environmental material testing. The NCPC Commission found the tapestry fabrication met the Commemorative Works Act durability criteria.

The CFA Commission requested a new tapestry mock-up to review the quality and legibility of the Normandy coastline image with distant landforms and cloud formations utilizing the proposed fabrication method of welded stainless steel wires. A new mock-up will be on display at the National Building Museum on the day of the CFA Commission meeting. The three panels indicated below were selected for the mock-up as representative panels for the overall design in relationship to the proportion of landscape and sky.

The tapestry fabrication utilizes four types of stainless steel braided wires and cables welded together. The design has a structural base grid and eight separate art layers that are applied in succession to form the image. The three panel image to the right shows the line work that represents the stainless steel wires for all eight art layers combined. The line work on each layer will be the basis for locating the art wires and welds on the panel. The artist adds finishing touches on the panel at the conclusion of the CNC fabrication process.



2011 PROOF OF CONCEPT TAPESTRY  
MOCK-UP LOOKING OUT FROM LBJ



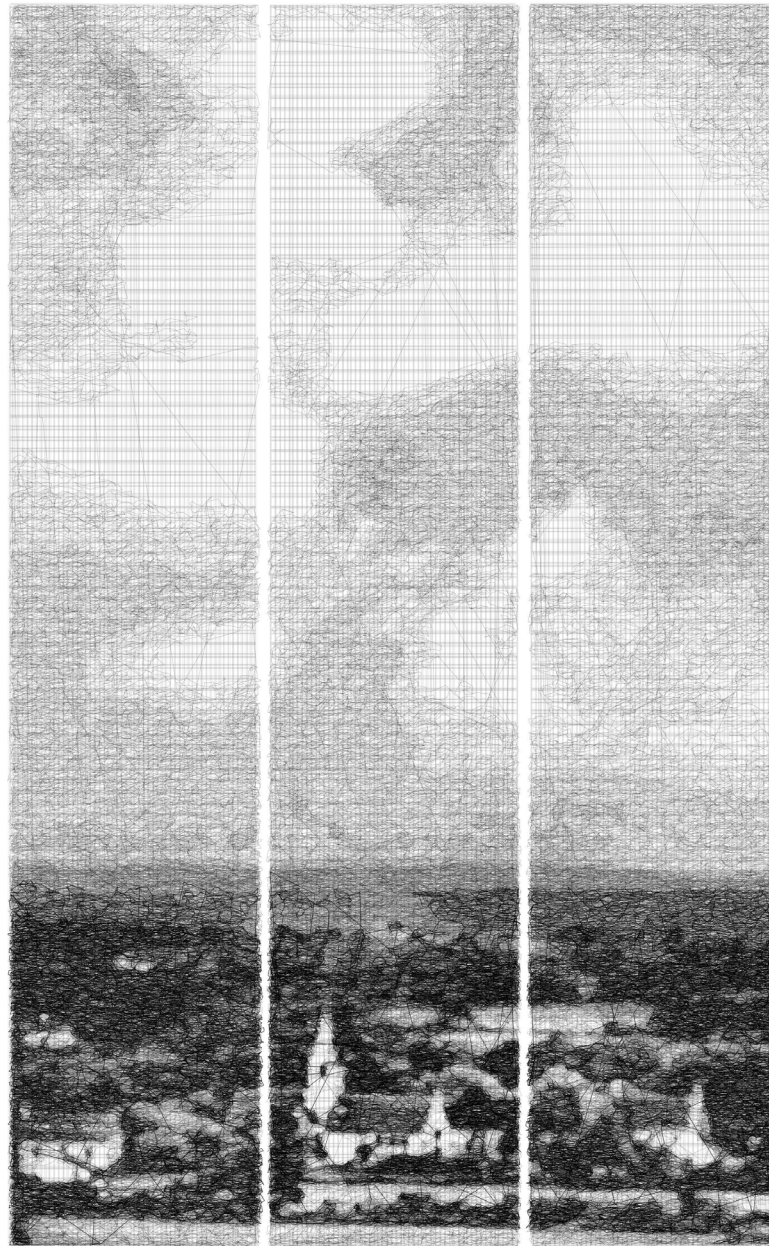
2011 PROOF OF CONCEPT TAPESTRY  
MOCK-UP LOOKING TOWARDS LBJ



PANELIZED TAPESTRY SHOWING THE THREE PANEL MOCK UP LOCATION IN CONTEXT

CURRENT DESIGN





THREE PANEL TAPESTRY LINE ART FOR THE MOCK-UP



VIEW OF TAPESTRY FROM CENTER OF MEMORIAL CORE

The revised tapestry art with the peaceful Normandy coastline is a prominent feature in the center of the memorial, where the landscape opens to reveal an expansive view of the tapestry. The iconic protruding landmark Point du Hoc identifies the Normandy coast on the tapestry image to visitors. The Point du Hoc is centered on the memorial core composition flanked by the Presidential and General Memorial Elements. The Normandy coast on the tapestry is a symbolic backdrop to the story of Dwight D. Eisenhower and his enduring contribution to our nation.

This new view demonstrates how the tapestry landscape is the third element of the memorial core and adds to the visitor experience by supplementing the narrative context for Eisenhower's dual accomplishments as the Supreme Allied Commander of the Allied Forces and the 34th President of the United States.

## 2.0 - COMMEMORATIVE ART UPDATE





VIEW OF MEMORIAL CORE AND TAPESTRY FROM MARYLAND AVENUE

CURRENT DESIGN



### 3.0 LYNDON B. JOHNSON PROMENADE UPDATE

#### LYNDON B. JOHNSON PROMENADE

The Lyndon B. Johnson Promenade serves as a separate and distinct forecourt to the Department of Education building. The Promenade provides a grander entrance to the north facade of the building elevated above the Memorial to create a new base and entry for the building. Several features are being proposed to enhance the Department of Education entrance and serve as a functional and active pedestrian space as well as create a positive interaction with the Eisenhower Memorial.

On the west end of the Promenade is a zone that has been designed to add a permanent exterior exhibition space. Children's art work is one possibility for a choice in programming this area. The steps adjacent to the planters, which address the grade change between the Promenade and the Memorial, can be used as seating areas and small gathering spaces looking onto the Memorial park. The northwestern corner of the LBJ building is the proposed interior location to house a future public outreach for the Department of Education, which could include a retail component.

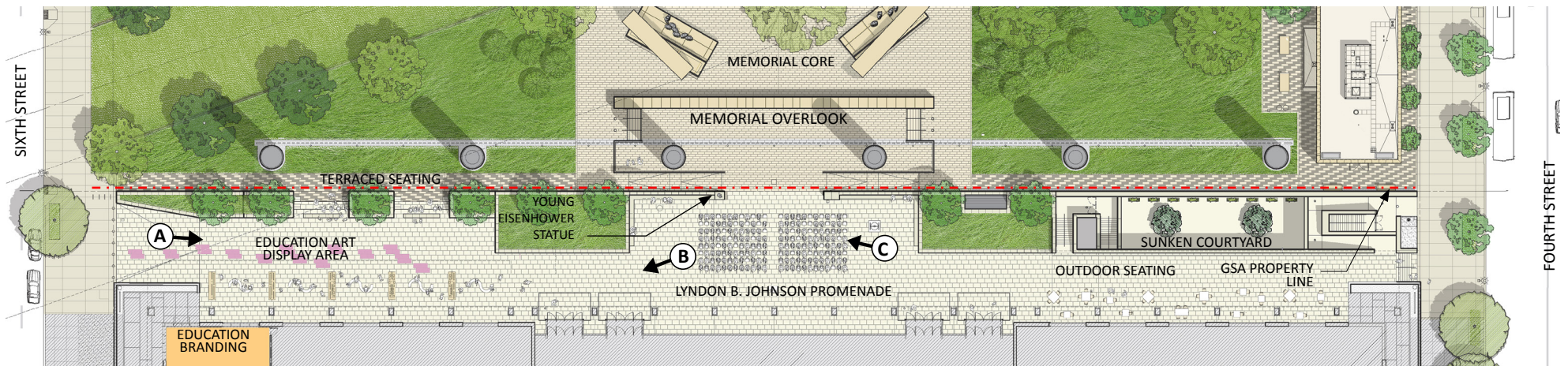
The Memorial Overlook takes advantage of the area between two large planters within the Promenade for larger group events. Ramps and stairs provide access to the Memorial from the Promenade. Adjacent to the interior cafeteria, an outdoor seating and dining area can be developed for use by the Department of Education employees and the public. The circulation from the sunken courtyard has been reconfigured to allow for the development of a green space that serves as an amenity to the existing library below.

#### YOUNG EISENHOWER SCULPTURE

The statue of Eisenhower as a young man has been further refined in response to the Commission comments. The revised statue is now seated on a pedestal at the intersection of the Memorial Overlook and the LBJ Promenade near the top of the ramp. Young Eisenhower remains centrally located within the Memorial near the Overlook inviting young visitors to identify and connect with Eisenhower's personal history as a great American story.

The new placement of the statue also emphasizes President Eisenhower's role in the establishment of the Department of Health, Education and Welfare in 1953, a predecessor to the Department of Education. Several other locations for the Young Eisenhower statue were considered, including the entrance plazas, approach pathways, as well as options for the sculpture in the park landscape. These alternatives were discarded in favor of the prominent location at the memorial center adjacent to the Department of Education. This location presented an opportunity to strengthen the connection between Eisenhower's legacy and the surrounding precinct.

The new location is immediately adjacent to the GSA property line and addresses concerns raised about the statue being located over the existing Lyndon B. Johnson building basement.

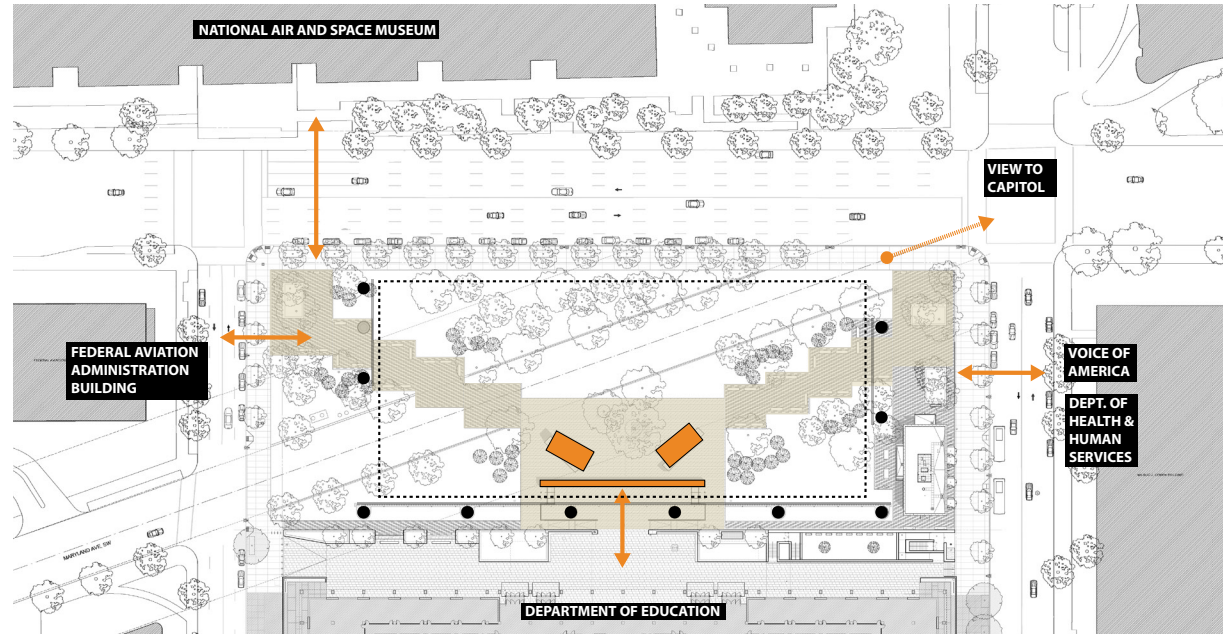


LYNDON B. JOHNSON PROMENADE PLAN

### 3.0 - LBJ PROMENADE UPDATE

## CONTEXTUAL RELATIONSHIPS IN THE VICINITY OF THE SITE

Eisenhower's legacy has a strong relationship to the context of this precinct. The National Air and Space Museum, the Federal Aviation Administration Building, the US Department of Education building, and the US Department of Health and Human Services building all have ties to Eisenhower's achievements. These strong thematic relationships were a contributing factor in the 2006 site selection process.







**A** VIEW OF PROMENADE LOOKING EAST

### 3.0 - LBJ PROMENADE UPDATE

**EISENHOWER MEMORIAL**  
Gehry Partners • AECOM Joint Venture



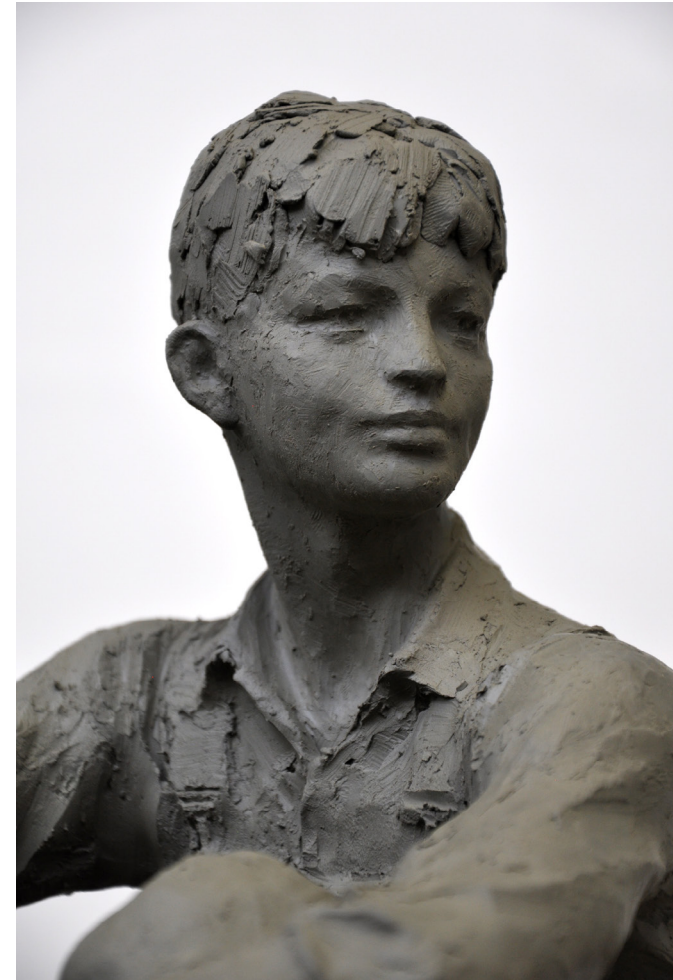


**B** VIEW OF WESTERN SECTION OF THE LBJ PROMENADE LOOKING WEST





EISENHOWER AS A YOUNG MAN SCULPTURE MAQUETTE BY SERGEY EYLANBEKOV



EISENHOWER AS A YOUNG MAN MAQUETTE DETAIL  
BY SERGEY EYLANBEKOV

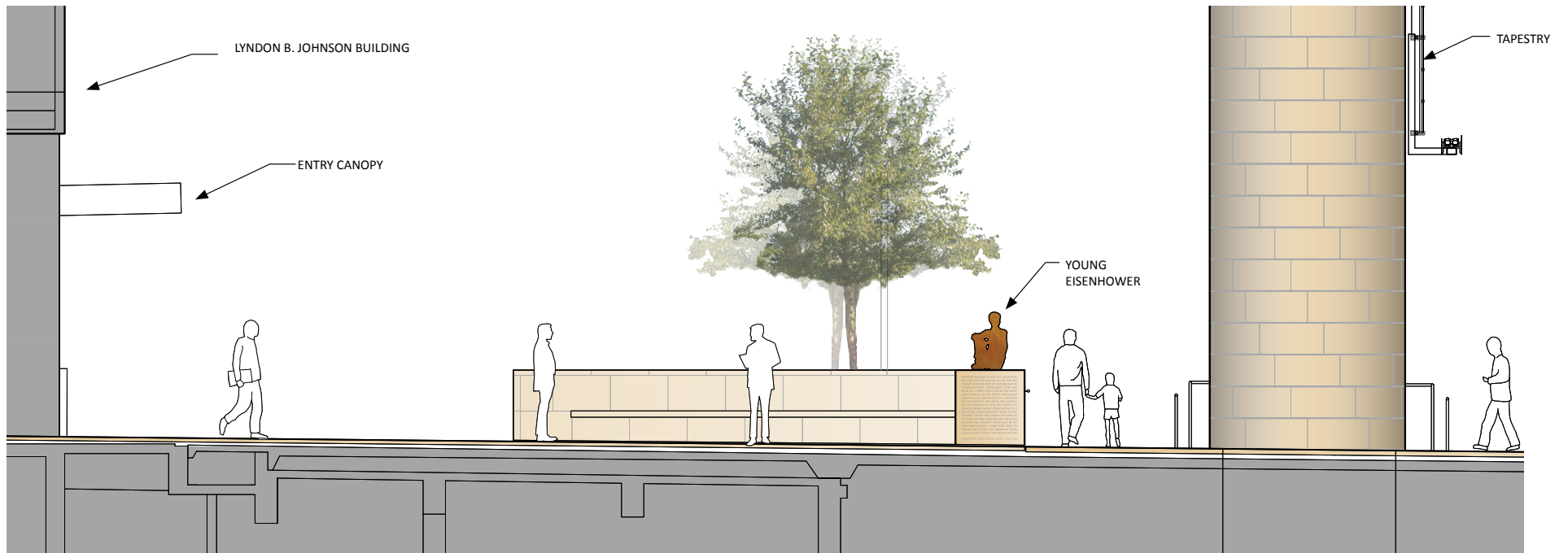
#### YOUNG EISENHOWER STATUE

The pose of Young Eisenhower has been further refined by the sculptor in response to the new placement of the figure at the entry point of the Lyndon B. Johnson Promenade from the memorial. The maquette shows the figure seated on a solid limestone pedestal that is four feet high. The figure faces the Department of Education, but his head is turned toward the memorial. The youthful Eisenhower is a hopeful counter point to General and Presidential Eisenhower portrait figures depicting more serious moments in his life.



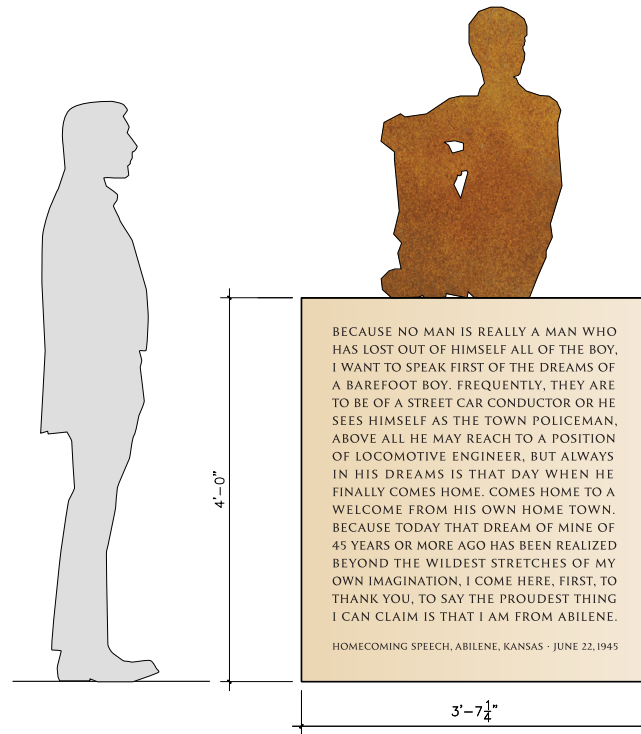


© LYNDON B. JOHNSON PROMENADE LOOKING NORTHWEST AT THE FIGURE OF EISENHOWER AS A YOUNG MAN



SECTION THROUGH LYNDON B. JOHNSON PROMENADE AND MEMORIAL OVERLOOK





YOUNG EISENHOWER INSCRIPTION WALL ELEVATION

## YOUNG EISENHOWER INSCRIPTION WALL

On the pedestal below the statue of Young Eisenhower will be an excerpt from the Abilene Homecoming Speech given in Abilene, Kansas on June 22, 1945.

*Historical Context:* Following the surrender of Nazi Germany, General Eisenhower embarked on a victory parade tour celebrating the Allied victory in Europe. After stops in Paris, London, New York, West Point, Washington, and Kansas City, Eisenhower returned to his hometown of Abilene, Kansas, via the same train tracks that had taken him eastward to West

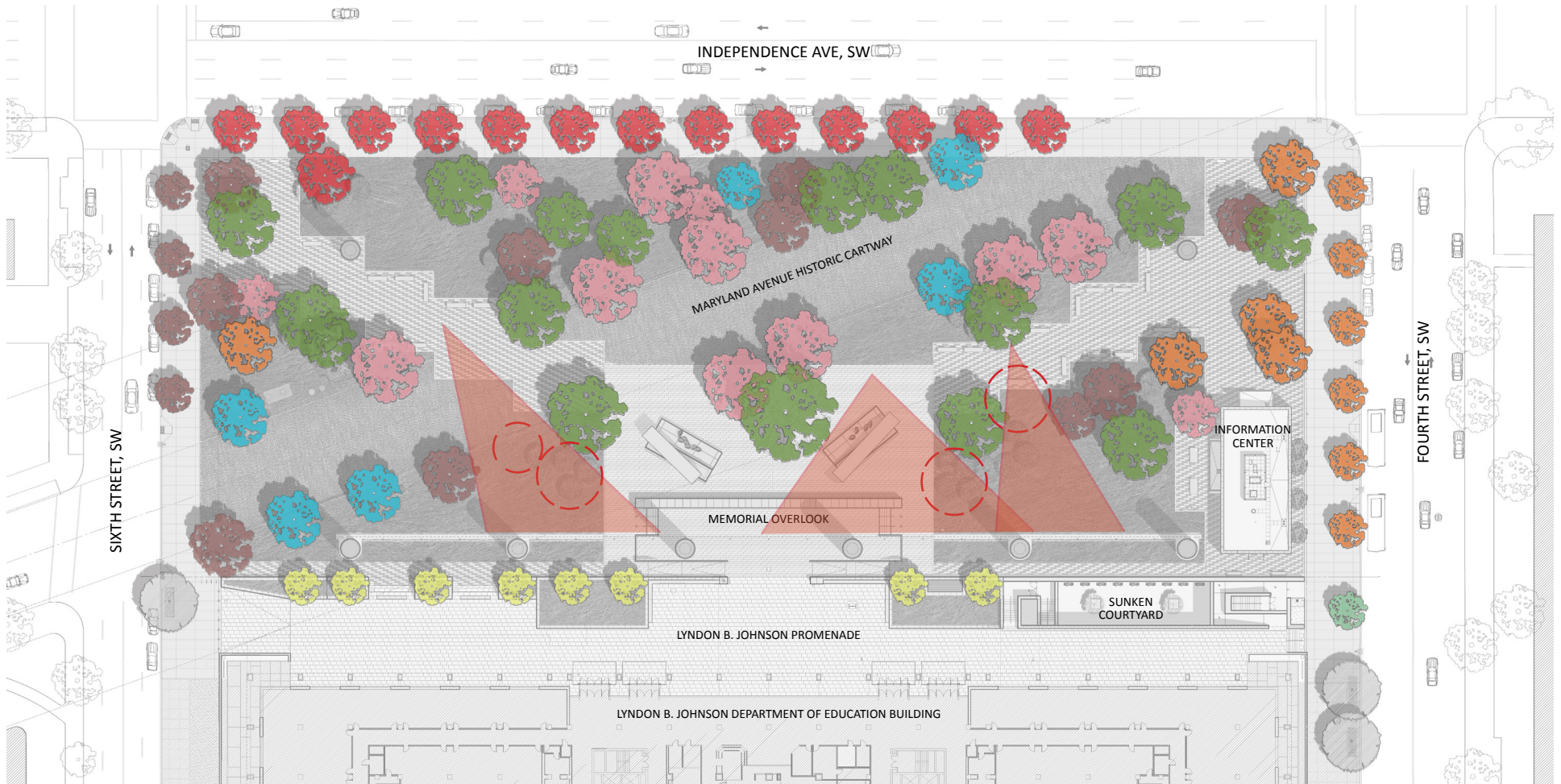
Point thirty-four years prior. On June 22, 1945, in Abilene's City Park—which had been newly named Eisenhower Park—Eisenhower delivered his Homecoming Speech to the largest crowd Abilene had ever known, in which he modestly acknowledged the admiration of proud fellow Abileners, while asserting that in his eyes he was merely “the symbol of heroic men you people and all the United States have sent to war” and not a hero. Reflecting on the fateful events that had brought him to this moment, he contemplated the impact of his small town upbringing noting, “never has this town been outside

my heart and memory.” Despite having planned and led the greatest amphibious military assault in history leading to the liberation of Western Europe, for Eisenhower the proudest thing he could claim was that he was from Abilene. Eisenhower displayed his genuine emotions in his deliverance of this speech, illustrating his profound astonishment at the level of enthusiasm with which he was greeted while simultaneously expressing his respect for the circumstances that had led to this momentous occasion.

## LANDSCAPE DESIGN AND TAPESTRY VISUAL STUDIES

The revised landscape presented in January removed four large canopy trees from the design at the center of the park for the purpose of opening larger vistas to the revised art of the Normandy coast image on the tapestry. The Commission did not support the tree removal commenting that this design would remove shade for the visitors to the memorial while not improving the perception of the tapestry.

The tapestry Normandy landscape is meant to be viewed as a series of partial vignettes that are revealed to the visitor on the journey through the park landscape from the entry plazas at the corners of the site to the memorial core where the vista opens. The views corridors are framed by the large tree canopy and understory trees. The understory trees remain in the design around the memorial center to provide shade and comfort to visitors at the pedestrian scale. The smaller understory trees do not block the tapestry landscape image to the same degree as the large trees. The following landscape visual studies illustrate the visitor perspective and show the effect of the removal of the large canopy trees to enhance the legibility of the Normandy landscape by widening the view of this prominent artistic element.



CANOPY TREE PLAN

( ) CANOPY TREE REMOVED FROM 2015 DESIGN



KEY:



Red Oak  
*Quercus rubra*



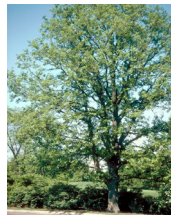
Swamp White Oak  
*Quercus bicolor*



Shingle Oak  
*Quercus imbricaria*



London Plane  
*Platanus x acerfolia*



Bur Oak  
*Quercus macrocarpa*



Hackberry  
*Celtis occidentalis*



Willow Oak  
*Quercus phellos*



River Birch  
*Betula nigra*

EISENHOWER MEMORIAL

Gehry Partners • AECOM Joint Venture

LANDSCAPE DESIGN UPDATE - 4.0





VIEW OF TAPESTRY LOOKING SOUTHEAST ALONG THE APPROACH WALKWAY.

2015 LANDSCAPE DESIGN WITH CANOPY TREE





VIEW OF TAPESTRY LOOKING SOUTHEAST ALONG THE APPROACH WALKWAY.

PROPOSED CURRENT DESIGN WITH CANOPY TREE REMOVED





VIEW OF TAPESTRY FROM MEMORIAL CORE LOOKING SOUTH

2015 LANDSCAPE DESIGN WITH CANOPY TREE





VIEW OF TAPESTRY FROM MEMORIAL CORE LOOKING SOUTH

PROPOSED CURRENT DESIGN WITH CANOPY TREE REMOVED





VIEW OF TAPESTRY LOOKING SOUTH ALONG THE EAST APPROACH WALKWAY

2015 LANDSCAPE DESIGN WITH CANOPY TREE





VIEW OF TAPESTRY LOOKING SOUTH ALONG THE EAST APPROACH WALKWAY

PROPOSED CURRENT DESIGN WITH CANOPY TREE REMOVED