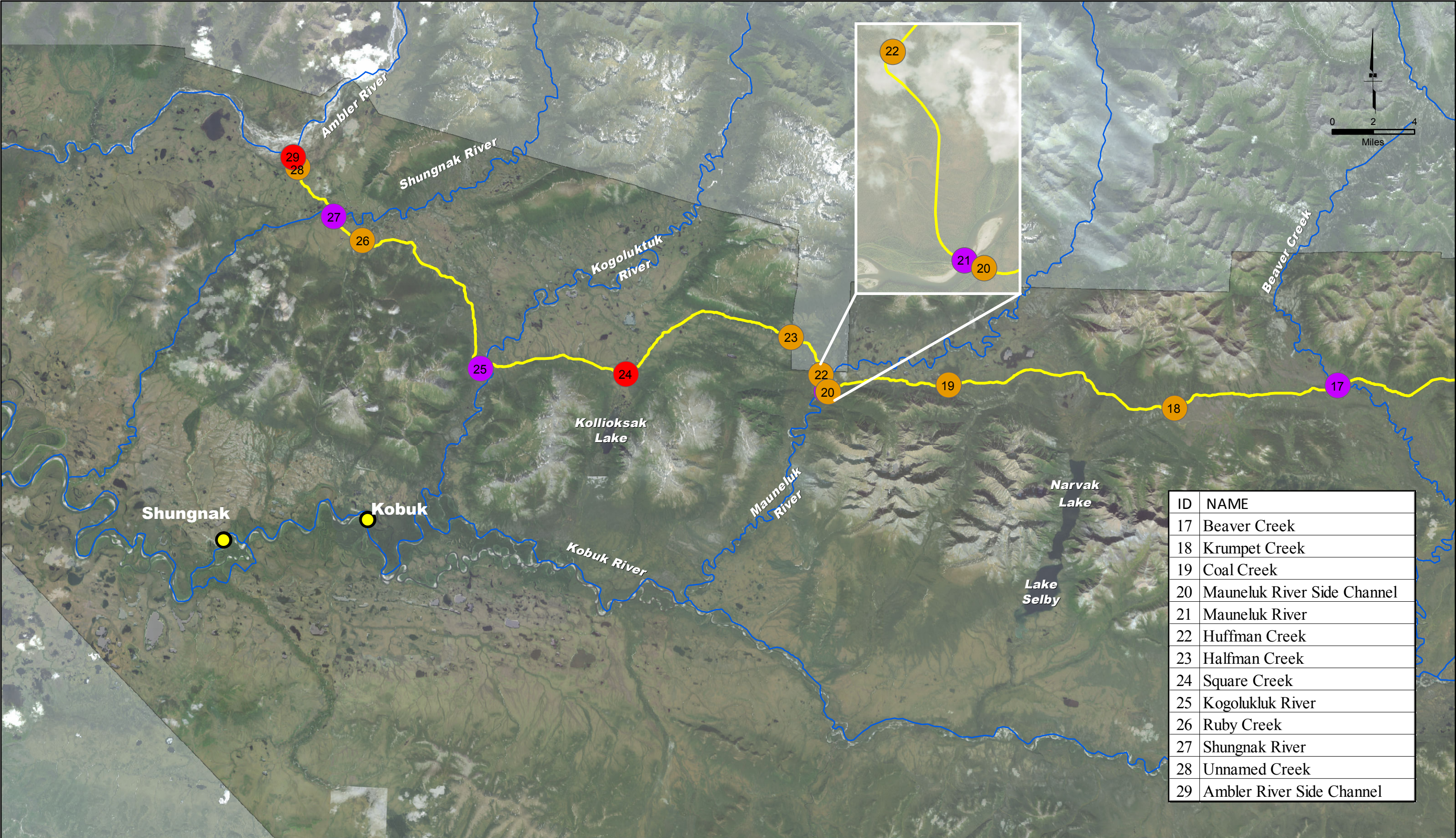


APPENDIX 6C

USCG BRIDGE PERMIT APPLICATION FIGURES AND TYPICALS

- **Figures 1 – 3: Proposed Bridge Locations**
- **Figures 4 – 6: Typical Sections**
- **Figures 7 – 34: Bridge Site Details**

(This Page Intentionally Left Blank)



ID	NAME
17	Beaver Creek
18	Krumpet Creek
19	Coal Creek
20	Mauneluk River Side Channel
21	Mauneluk River
22	Huffman Creek
23	Halfman Creek
24	Square Creek
25	Kogolukluk River
26	Ruby Creek
27	Shungnak River
28	Unnamed Creek
29	Ambler River Side Channel

Communities

#

Large Bridge

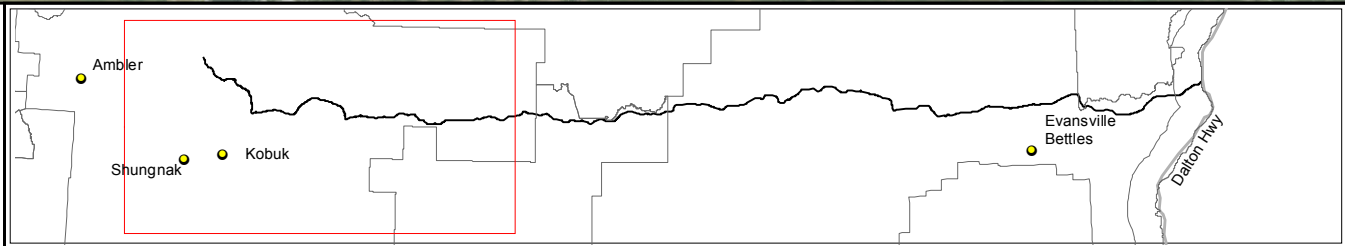
#

Medium Bridge

#

Small Bridge

Preferred (Northern) Alignment



AMBLER
MINING DISTRICT

INDUSTRIAL ACCESS PROJECT

DOWL

AIDEA
Alaska Industrial Development
and Export Authority

USCG Bridge Program Review
Proposed Bridge Locations

Ambler Mining District
Industrial Access Project

April 19, 2016

Figure 1



ID	NAME
5	East Fork Henshaw Creek
6	South Fork Bedrock Creek
7	Unnamed Creek
8	Malamute Fork Alatna River
9	Alatna River
10	Unnamed Creek
11	Unnamed Creek
12	Unnamed Creek
13	Kobuk River
14	Unnamed Creek
15	Unnamed Creek
16	Reed River

Communities

#

Large Bridge

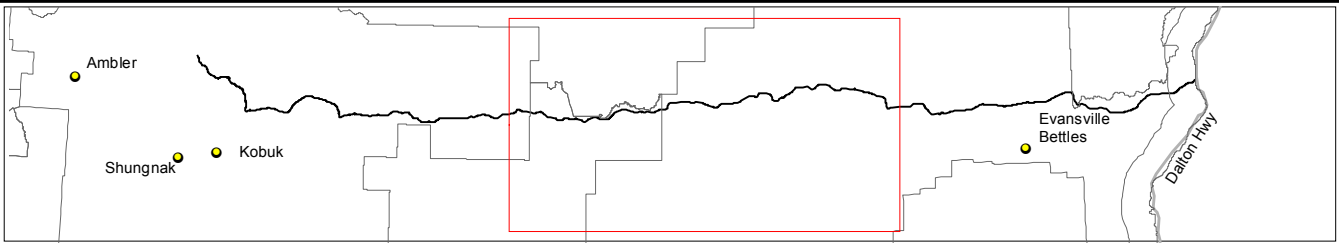
#

Medium Bridge

#

Small Bridge

Preferred (Northern) Alignment



AMBLER MINING DISTRICT

INDUSTRIAL ACCESS PROJECT

DOWL

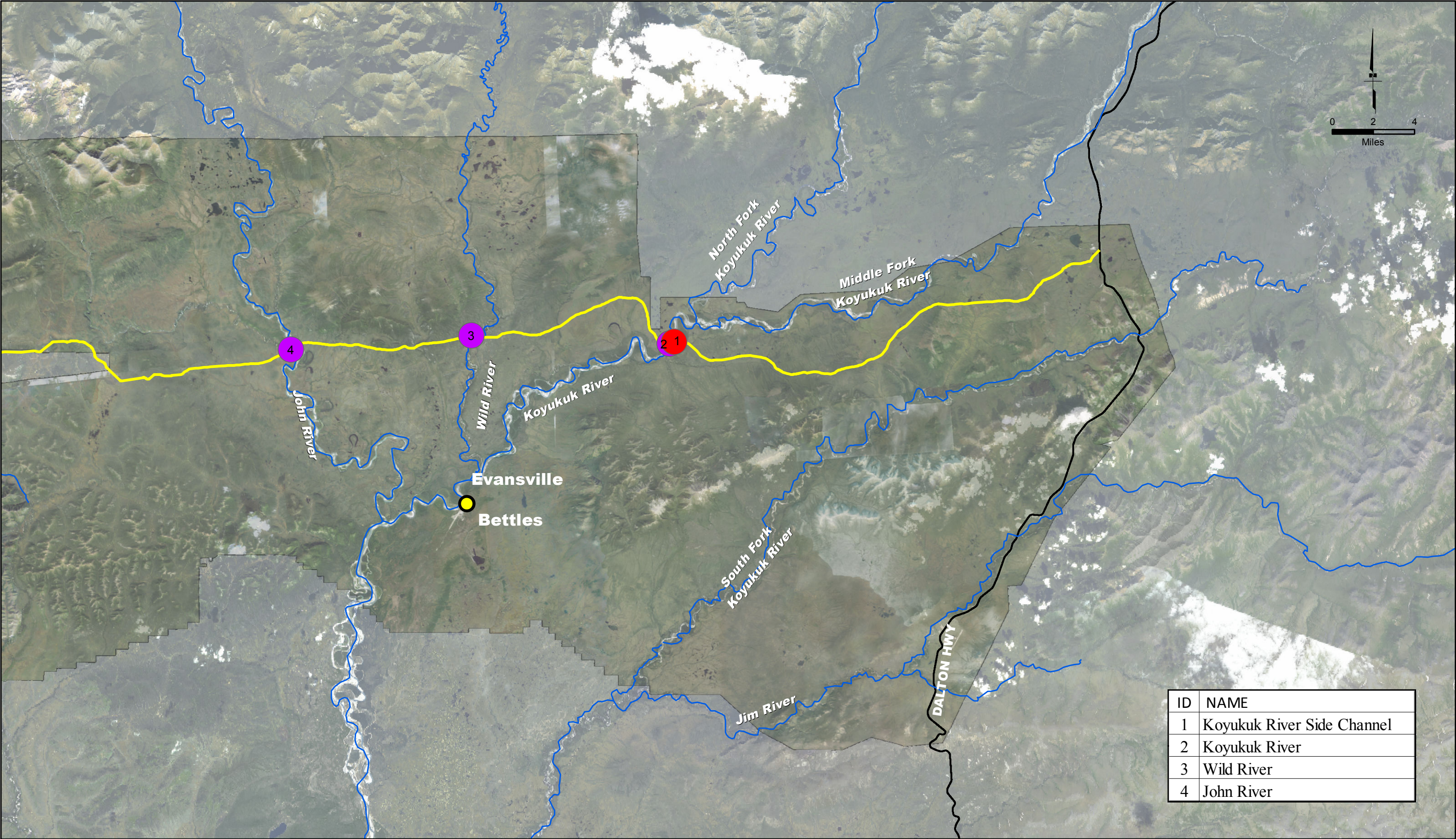
AIDEA

USCG Bridge Program Review
Proposed Bridge Locations

Ambler Mining District
Industrial Access Project

April 19, 2016

Figure 2



ID	NAME
1	Koyukuk River Side Channel
2	Koyukuk River
3	Wild River
4	John River

Communities

#

Large Bridge

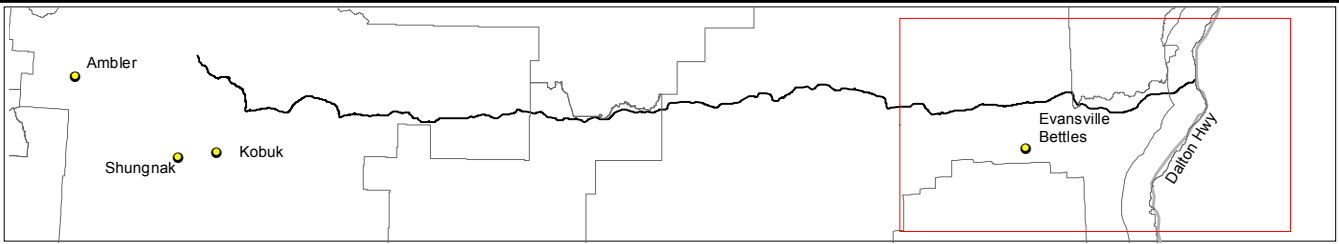
#

Medium Bridge

#

Small Bridge

Preferred (Northern) Alignment



AMBLER MINING DISTRICT

INDUSTRIAL ACCESS PROJECT

DOWL

AIDEA

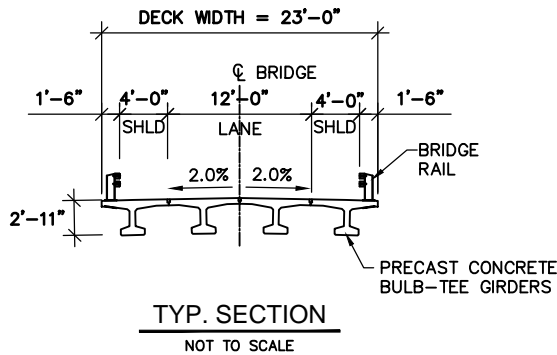
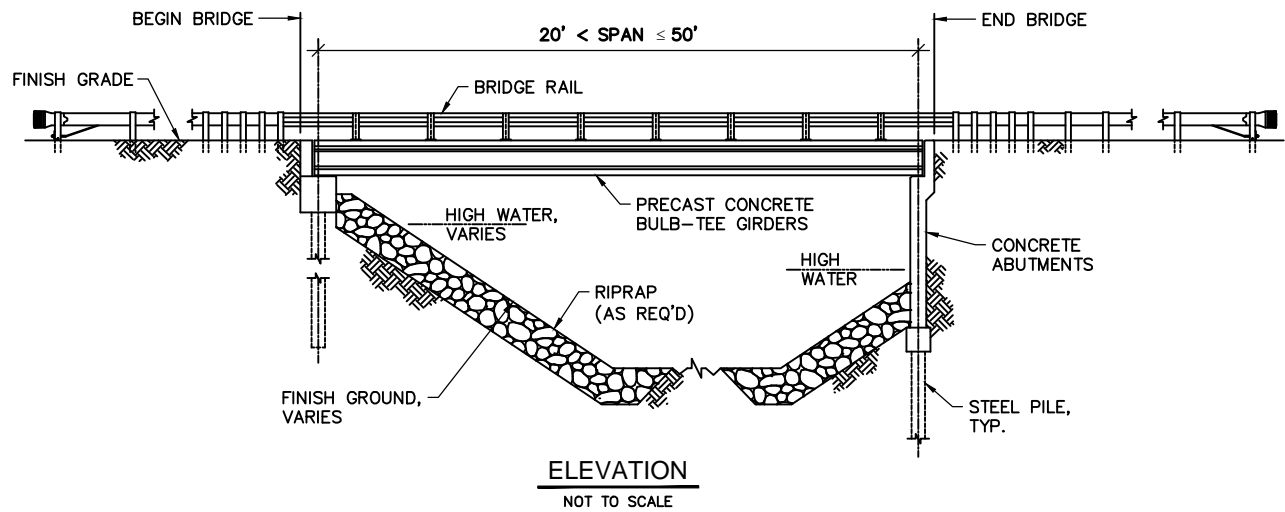
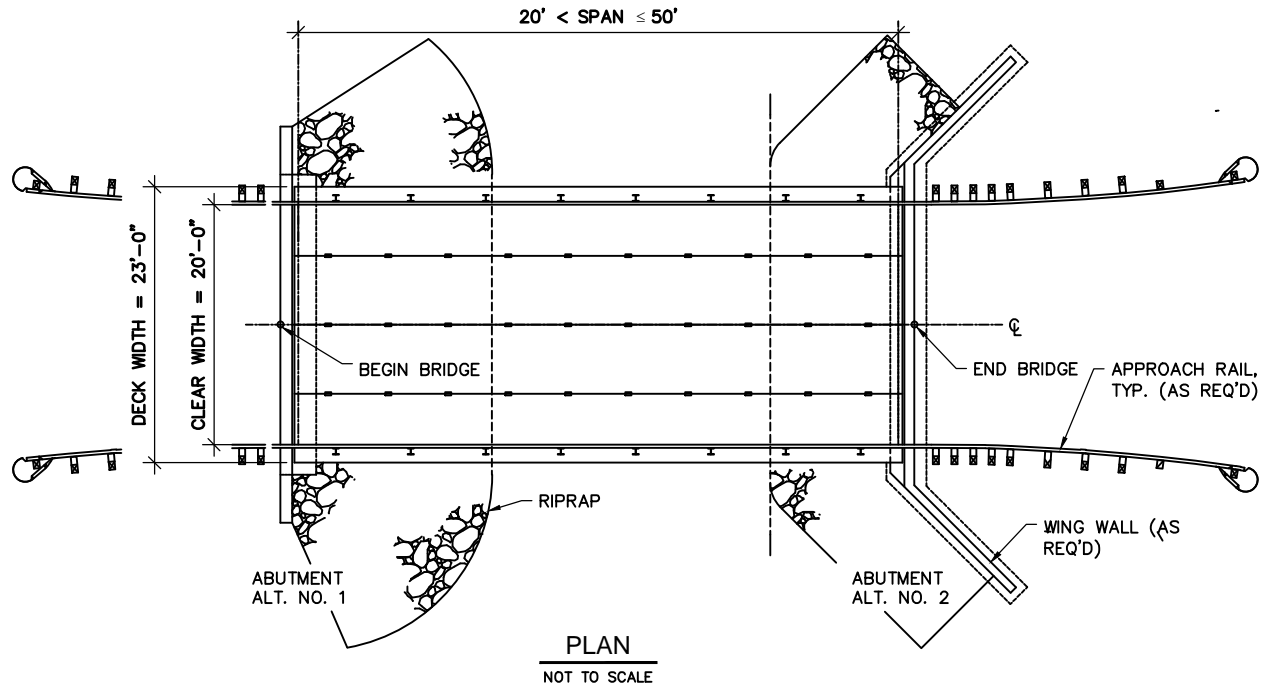
Alaska Industrial Development and Export Authority

USCG Bridge Program Review
Proposed Bridge Locations

Ambler Mining District
Industrial Access Project

April 19, 2016

Figure 3

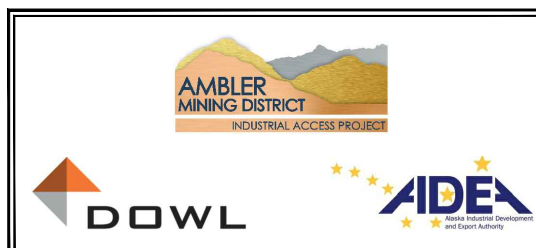
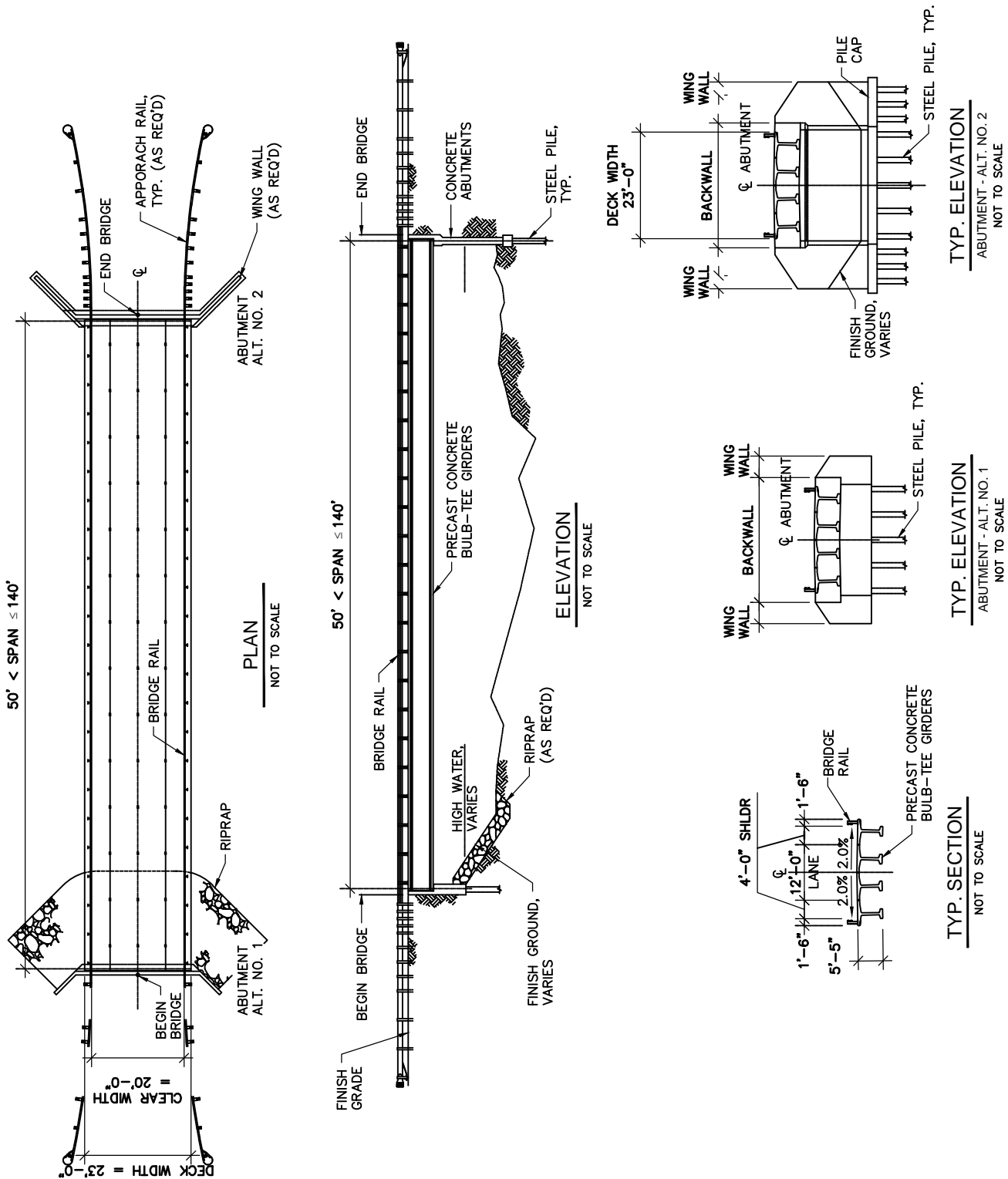


USCG Bridge Program Review
Small Bridge (<50' SPAN)

Ambler Mining District
Industrial Access Project

April 15, 2016

Figure 4



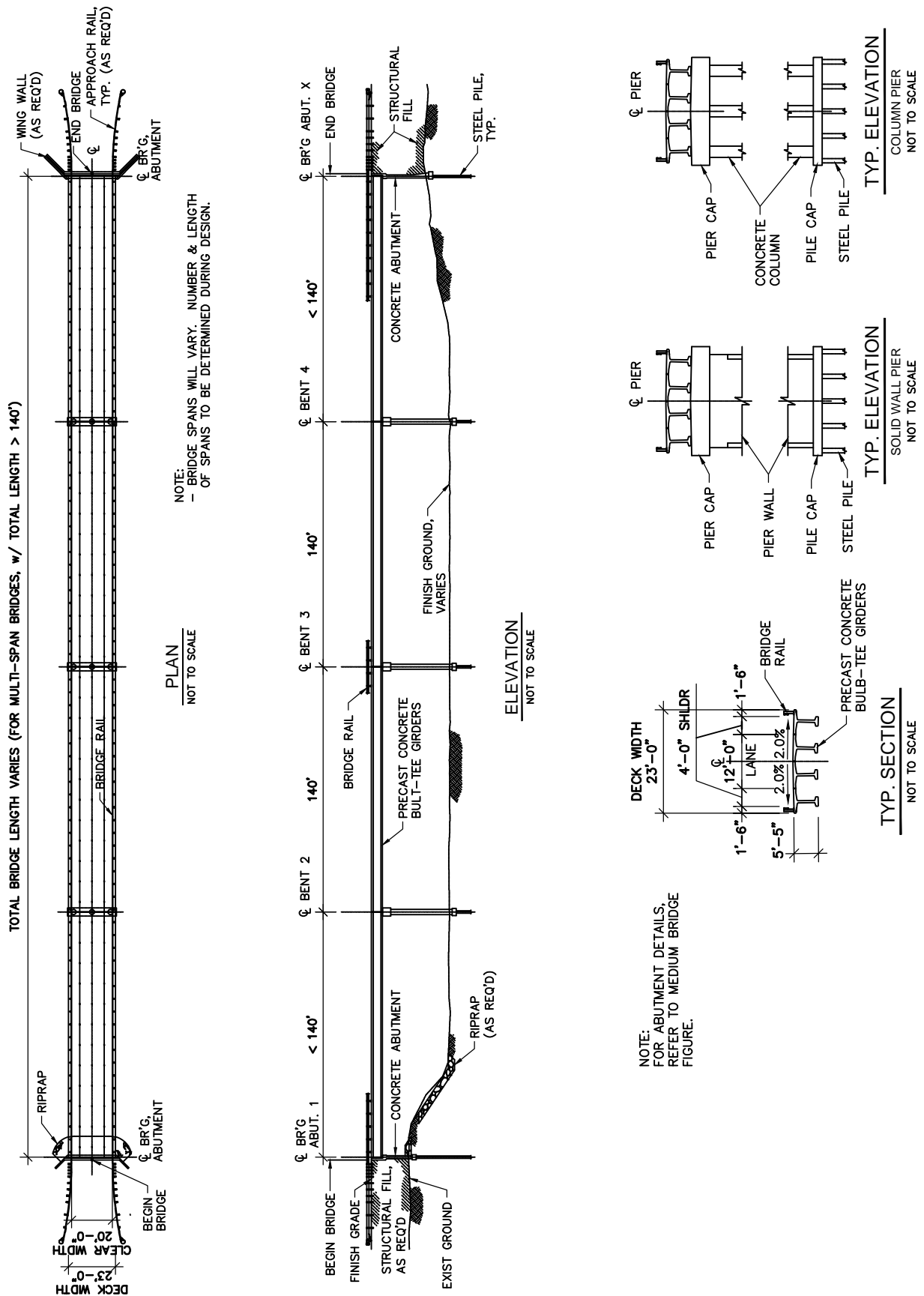
USCG Bridge Program Review
MEDIUM BRIDGE (50FT < SPAN < 140FT)

Ambler Mining District
Industrial Access Project

April 15, 2016

Figure 5

Ambler - Large Bridge
(multi-span, Total Bridge Length > 150')
(individual spans > 120')

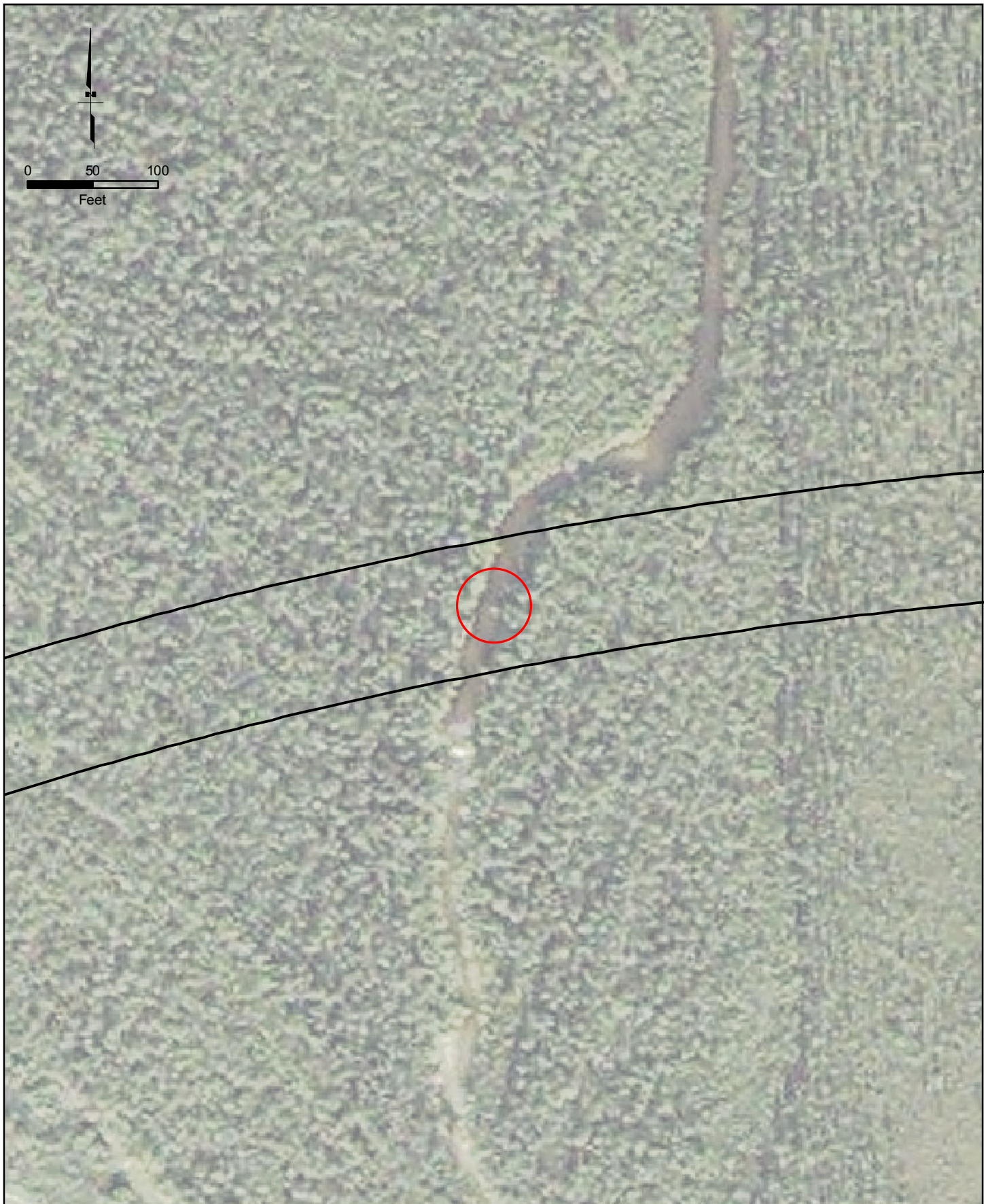





USCG Bridge Program Review
LARGE BRIDGE (> 140FT SPAN)

Ambler Mining District
Industrial Access Project

April 15, 2016

Figure 6



-  Large Bridge
-  Medium Bridge
-  Small Bridge

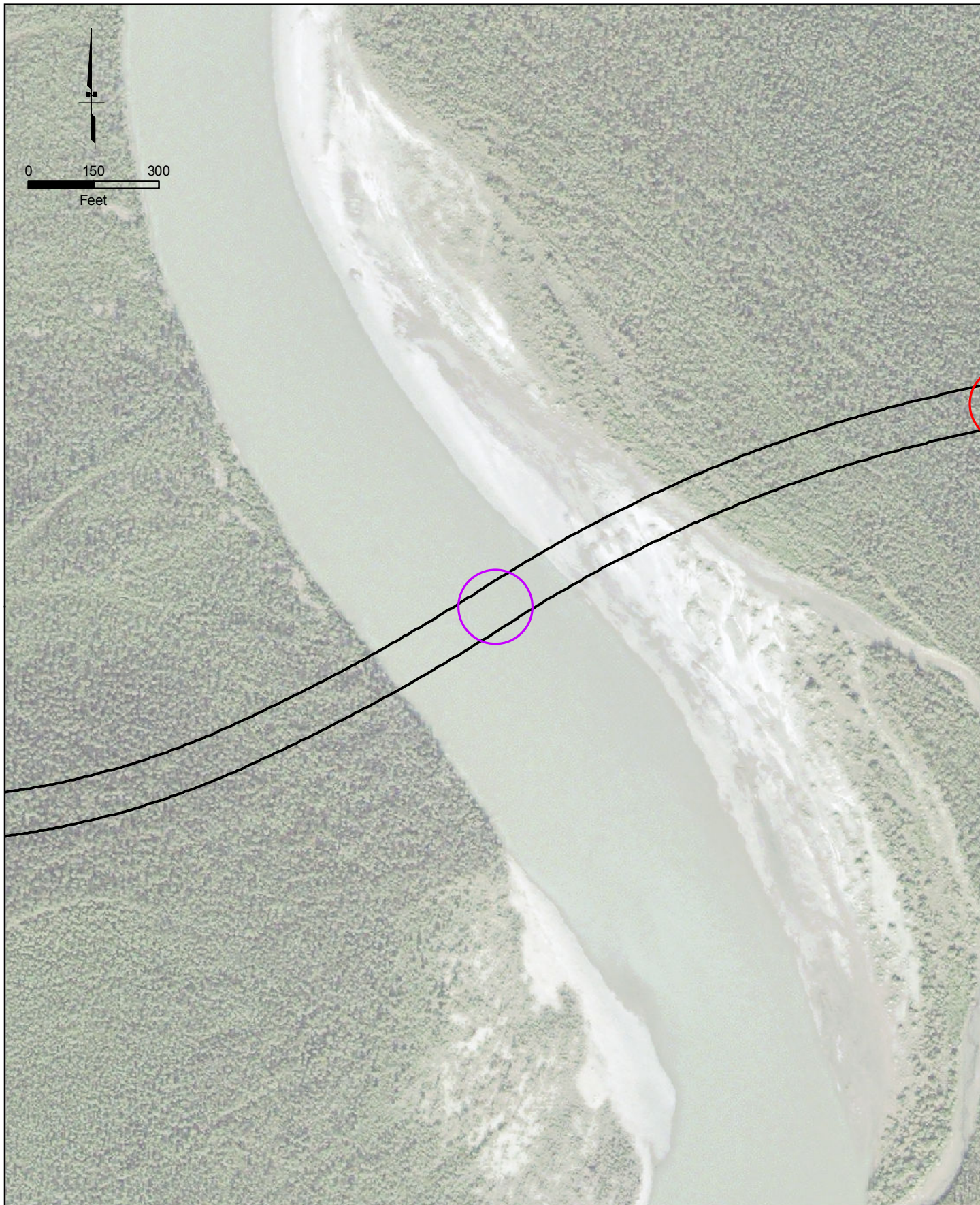


USCG Bridge Program Review
No. 1, Koyukuk River Side Channel

Ambler Mining District
Industrial Access Project

April 19, 2016

Figure 7



- Large Bridge
- Medium Bridge
- Small Bridge

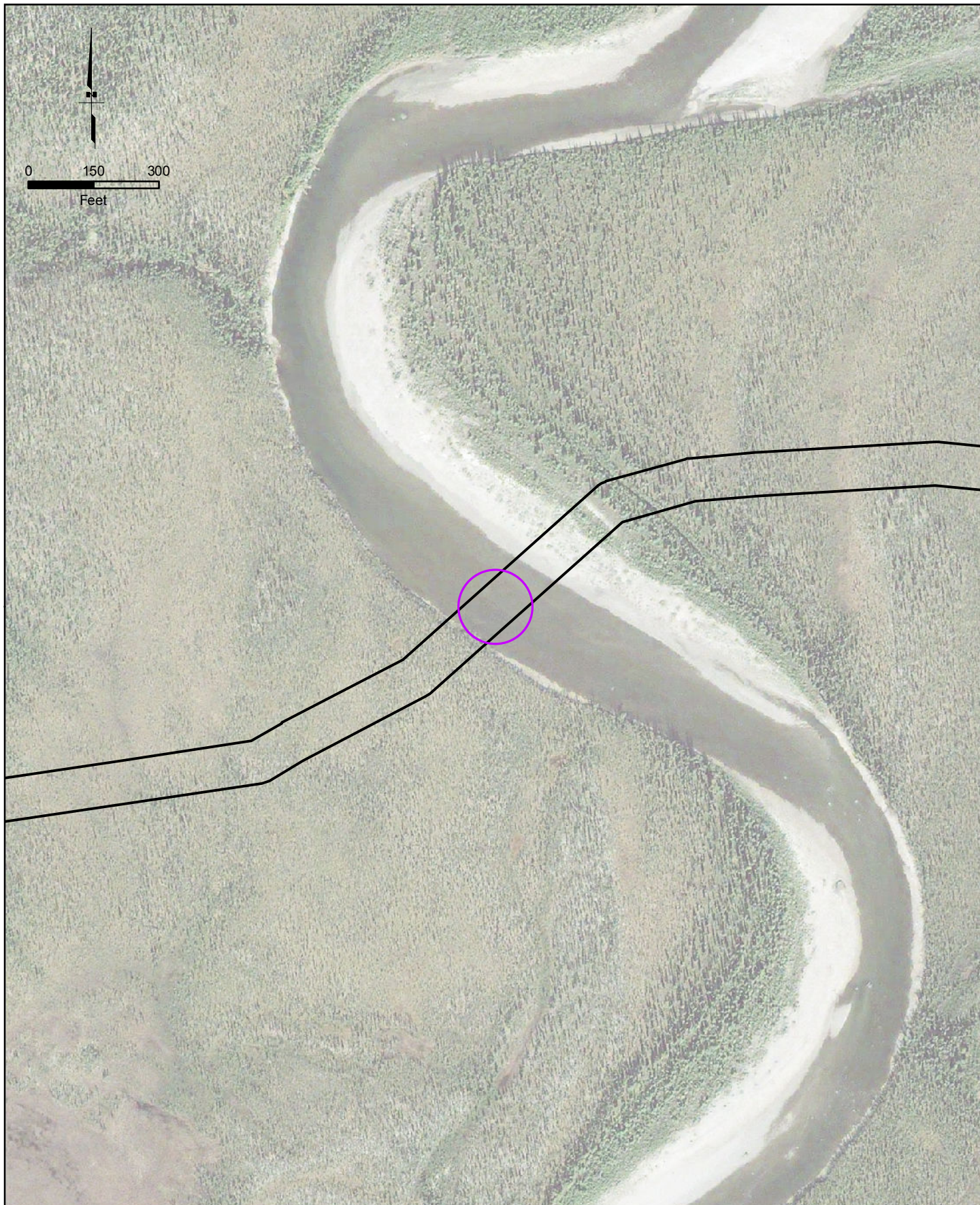


USCG Bridge Program Review
No. 2, Koyukuk River

Ambler Mining District
Industrial Access Project

April 19, 2016

Figure 8



- Large Bridge
- Medium Bridge
- Small Bridge

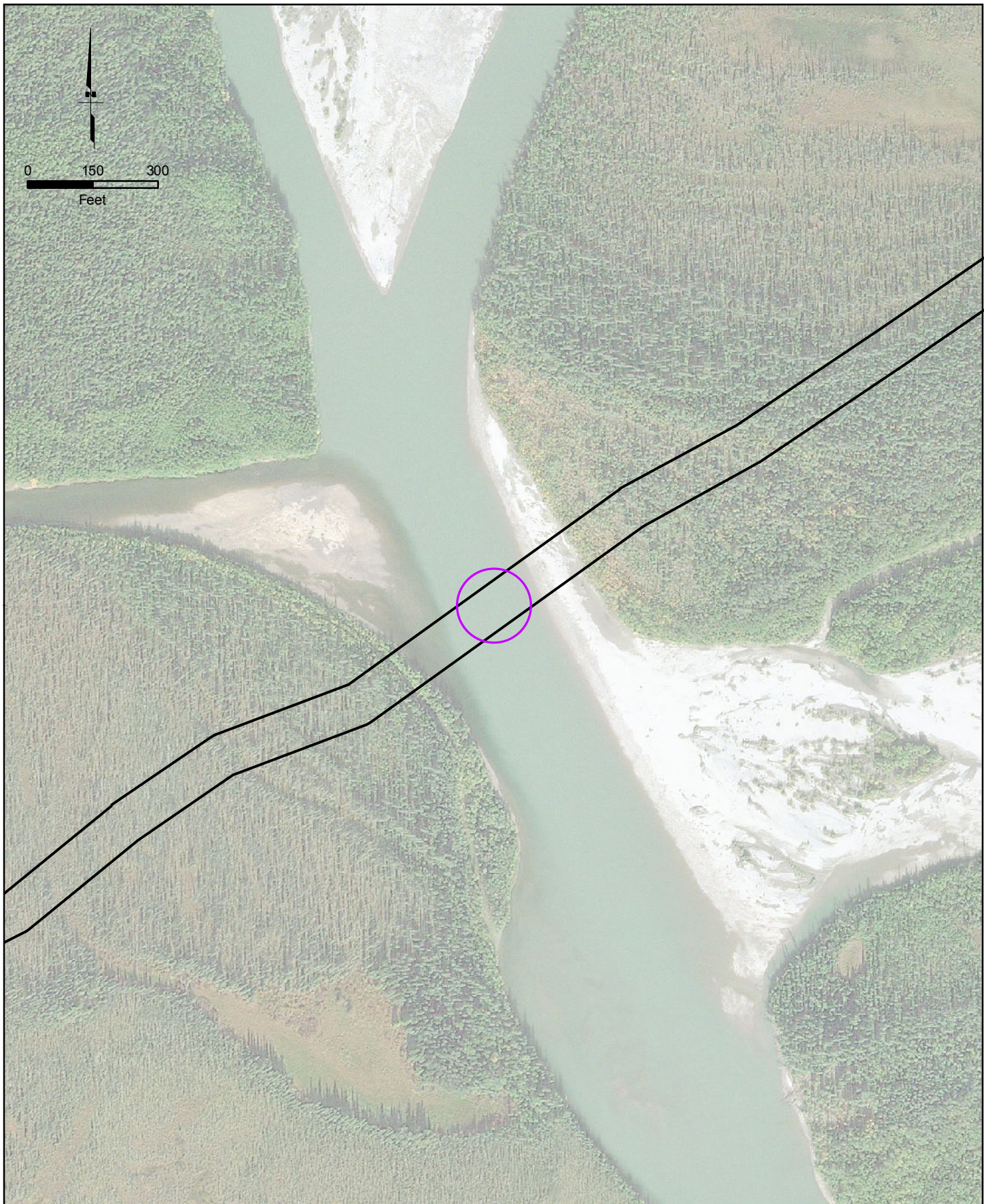


USCG Bridge Program Review
No. 3, Wild River

Ambler Mining District
Industrial Access Project

April 19, 2016

Figure 9



- Large Bridge
- Medium Bridge
- Small Bridge



USCG Bridge Program Review
No. 4, John River

Ambler Mining District
Industrial Access Project

April 19, 2016

Figure 10



- Large Bridge
- Medium Bridge
- Small Bridge



USCG Bridge Program Review
No. 5, E. F. Henshaw Creek

Ambler Mining District
Industrial Access Project

April 19, 2016

Figure 11



- Large Bridge
- Medium Bridge
- Small Bridge



USCG Bridge Program Review
No. 6, S. F. Bedrock Creek

Ambler Mining District
Industrial Access Project

April 19, 2016

Figure 12



- Large Bridge
- Medium Bridge
- Small Bridge

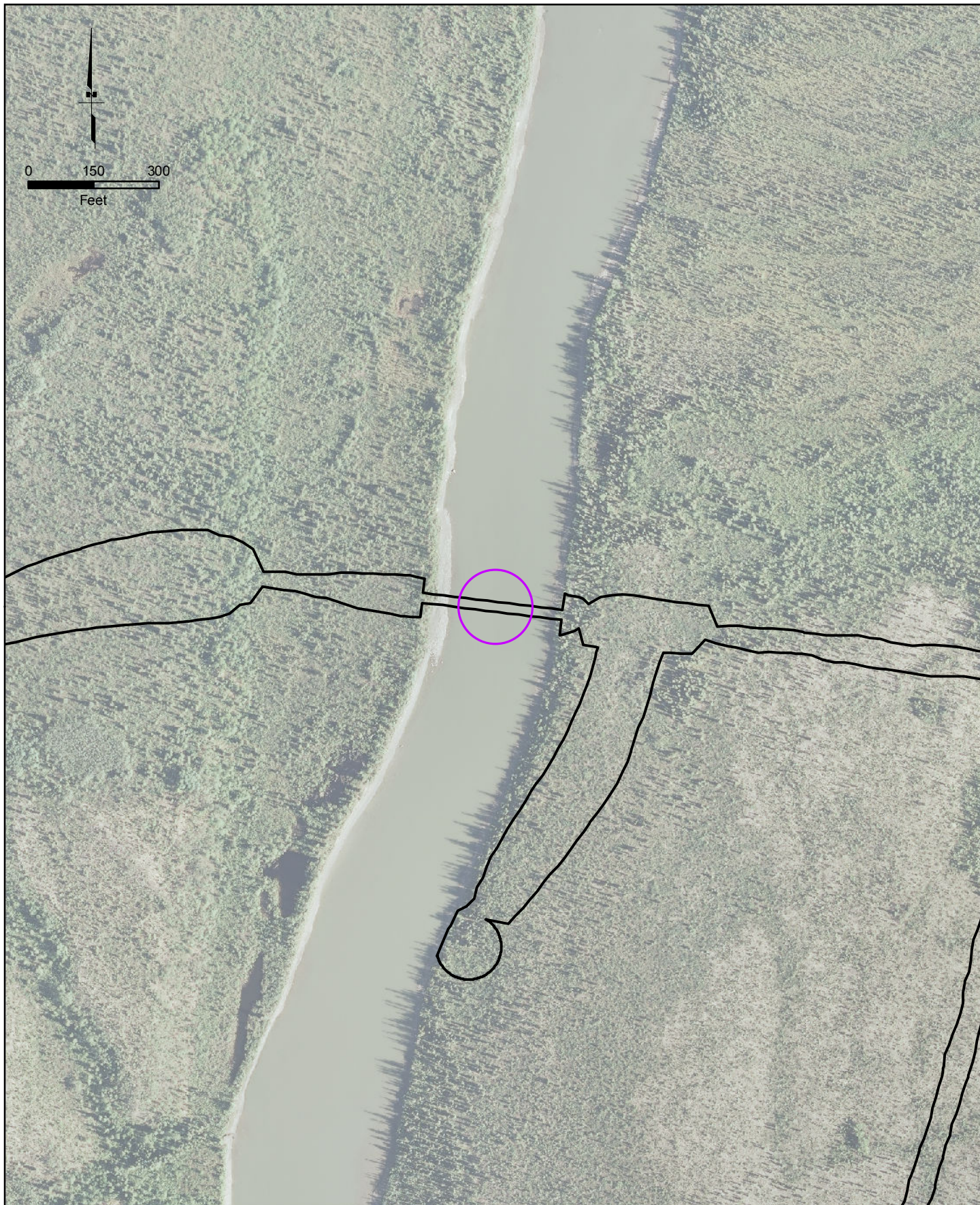


USCG Bridge Program Review
No. 8, Malamute Fork Alatna River

Ambler Mining District
Industrial Access Project

April 19, 2016

Figure 14



- Large Bridge
- Medium Bridge
- Small Bridge



USCG Bridge Program Review
No. 9, Alatna River

Ambler Mining District
Industrial Access Project

April 19, 2016

Figure 15



- Large Bridge
- Medium Bridge
- Small Bridge

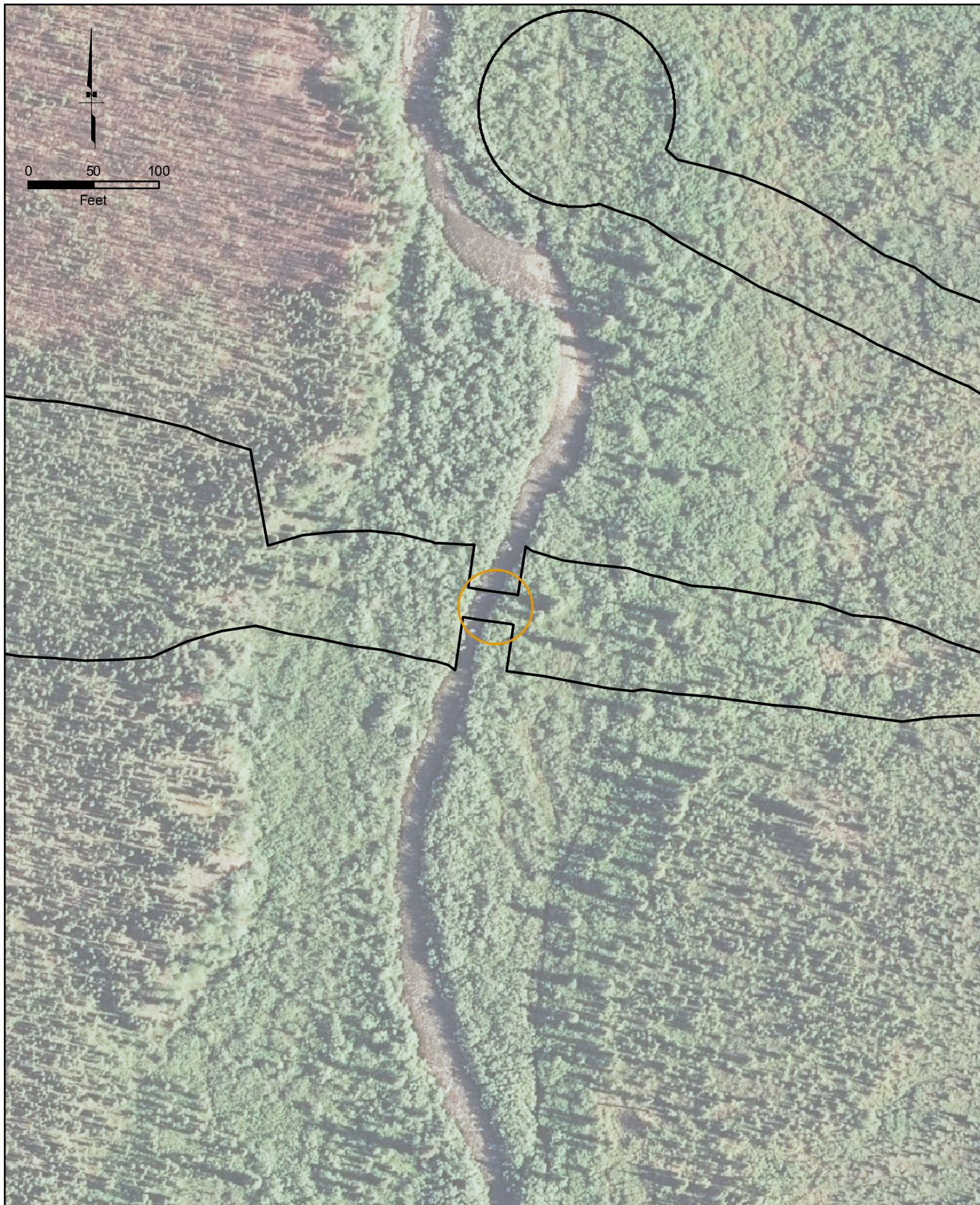


USCG Bridge Program Review
No. 7, Unnamed Creek

Ambler Mining District
Industrial Access Project

April 19, 2016

Figure 13



- Large Bridge
- Medium Bridge
- Small Bridge

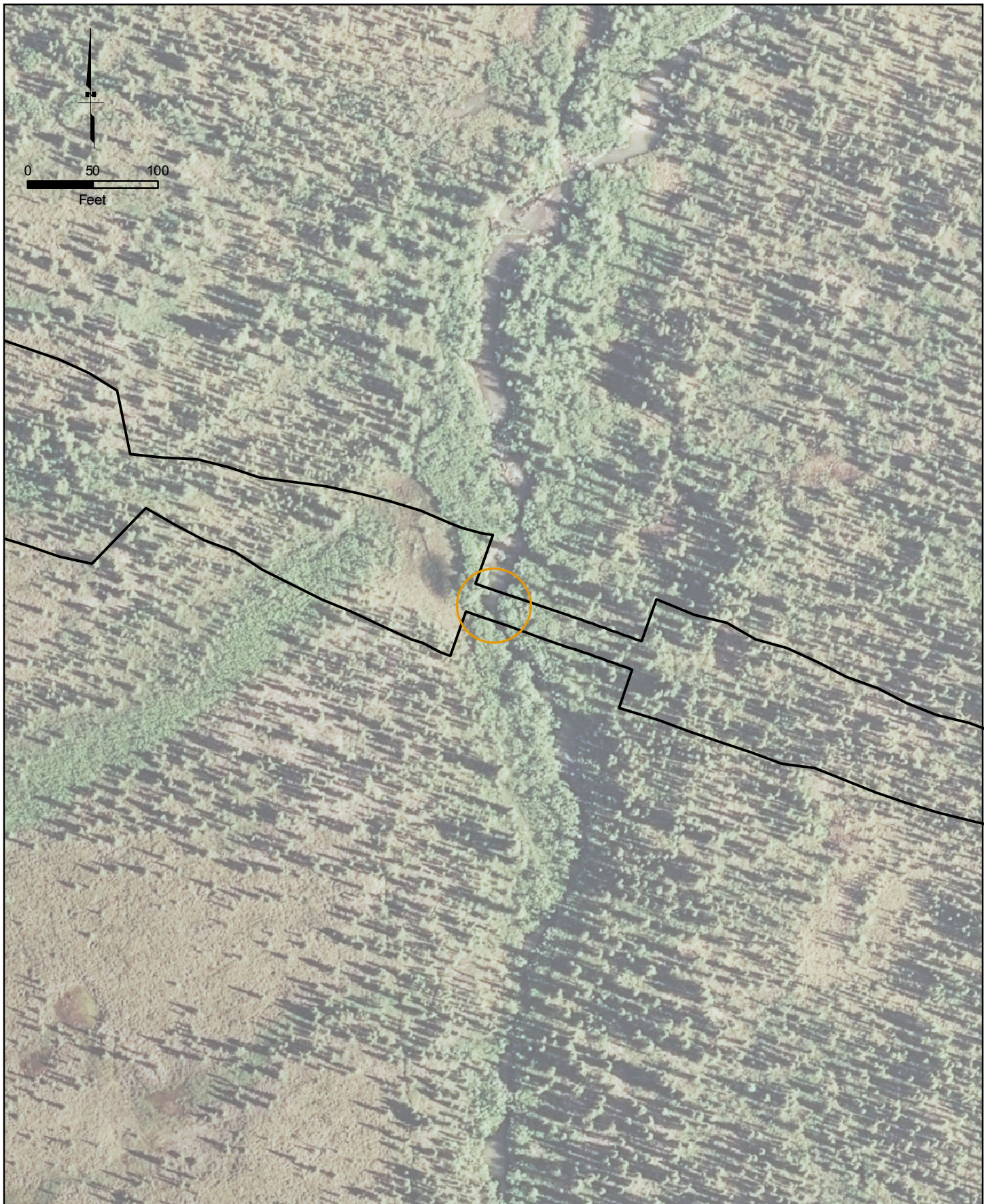


USCG Bridge Program Review
No. 10, Unnamed Creek

Ambler Mining District
Industrial Access Project

April 19, 2016

Figure 16



- Large Bridge
- Medium Bridge
- Small Bridge

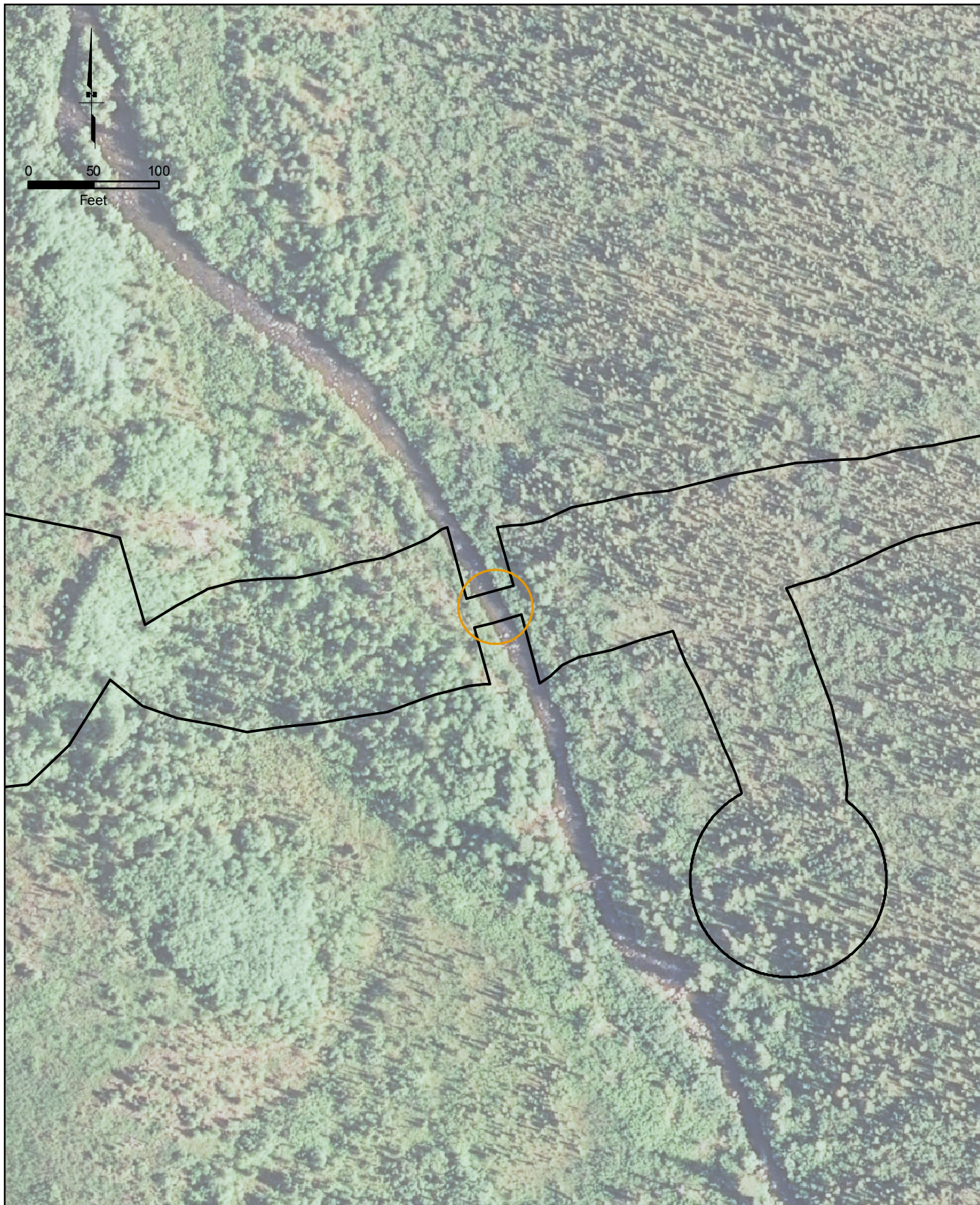


USCG Bridge Program Review
No. 11, Unnamed Creek

Ambler Mining District
Industrial Access Project

April 19, 2016

Figure 17



- Large Bridge
- Medium Bridge
- Small Bridge

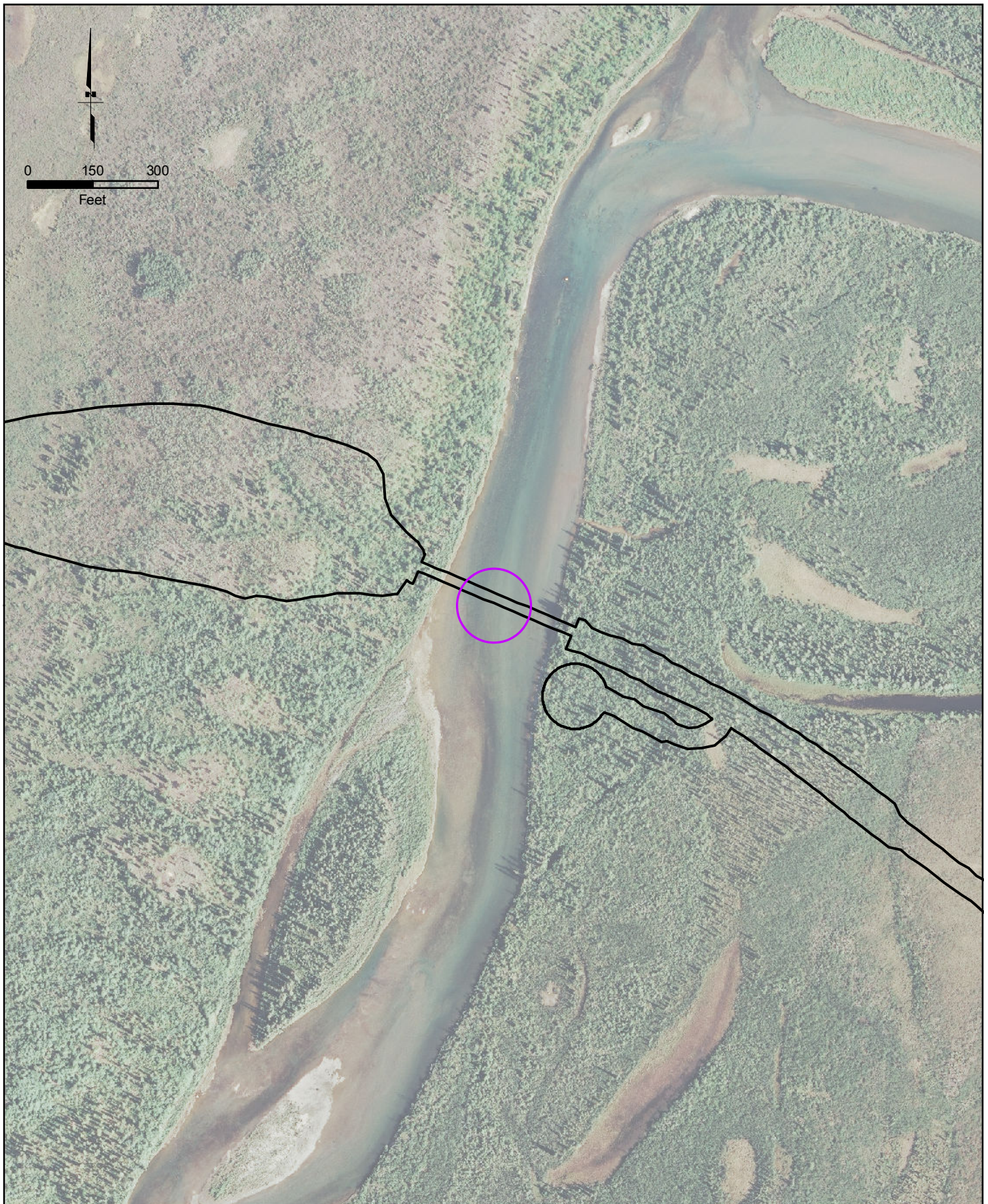


USCG Bridge Program Review
No. 12, Unnamed Creek

Ambler Mining District
Industrial Access Project

April 19, 2016

Figure 18



- Large Bridge
- Medium Bridge
- Small Bridge



USCG Bridge Program Review
No. 13, Kobuk River

Ambler Mining District
Industrial Access Project

April 19, 2016

Figure 19



- Large Bridge
- Medium Bridge
- Small Bridge

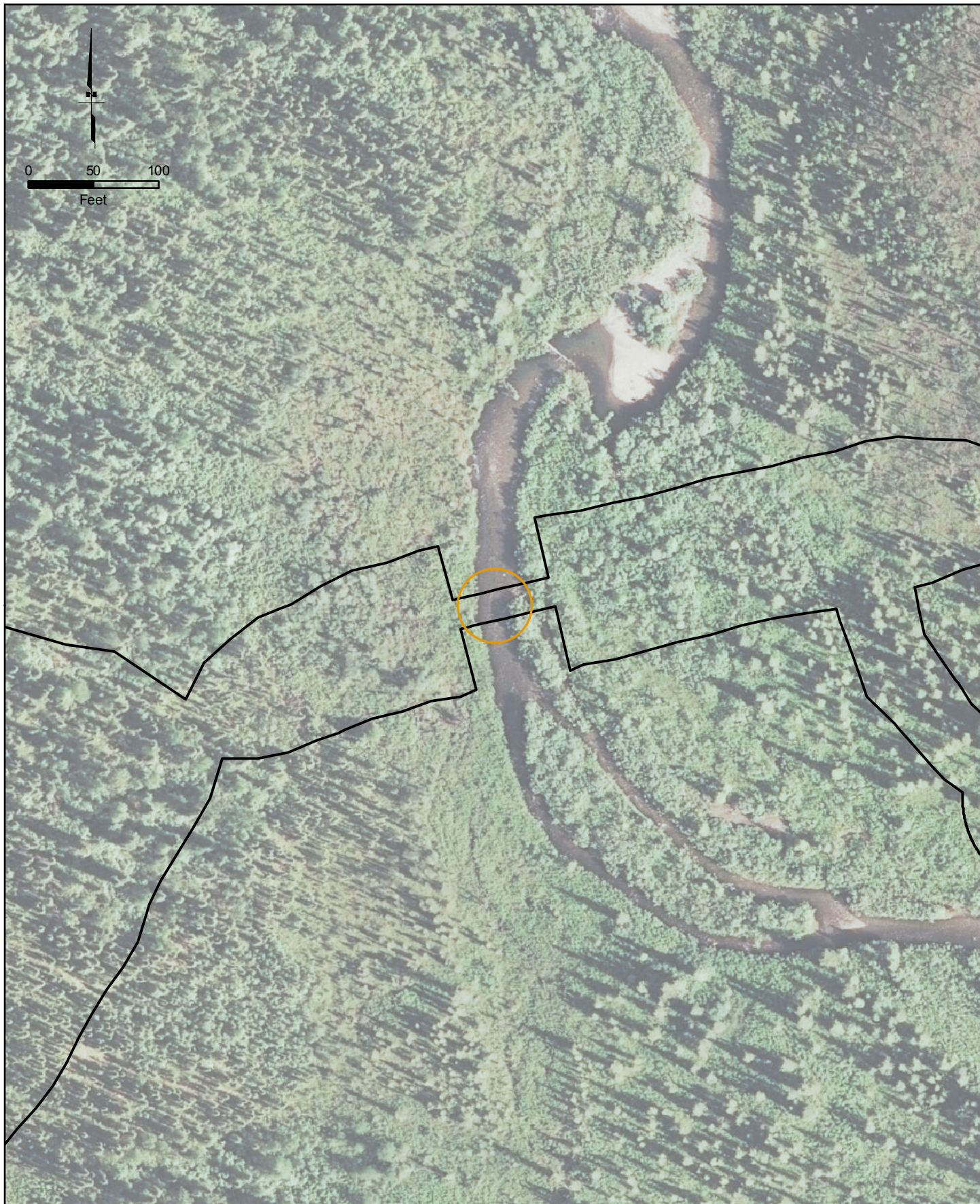


USCG Bridge Program Review
No. 14, Unnamed Creek

Ambler Mining District
Industrial Access Project

April 19, 2016

Figure 20



- Large Bridge
- Medium Bridge
- Small Bridge

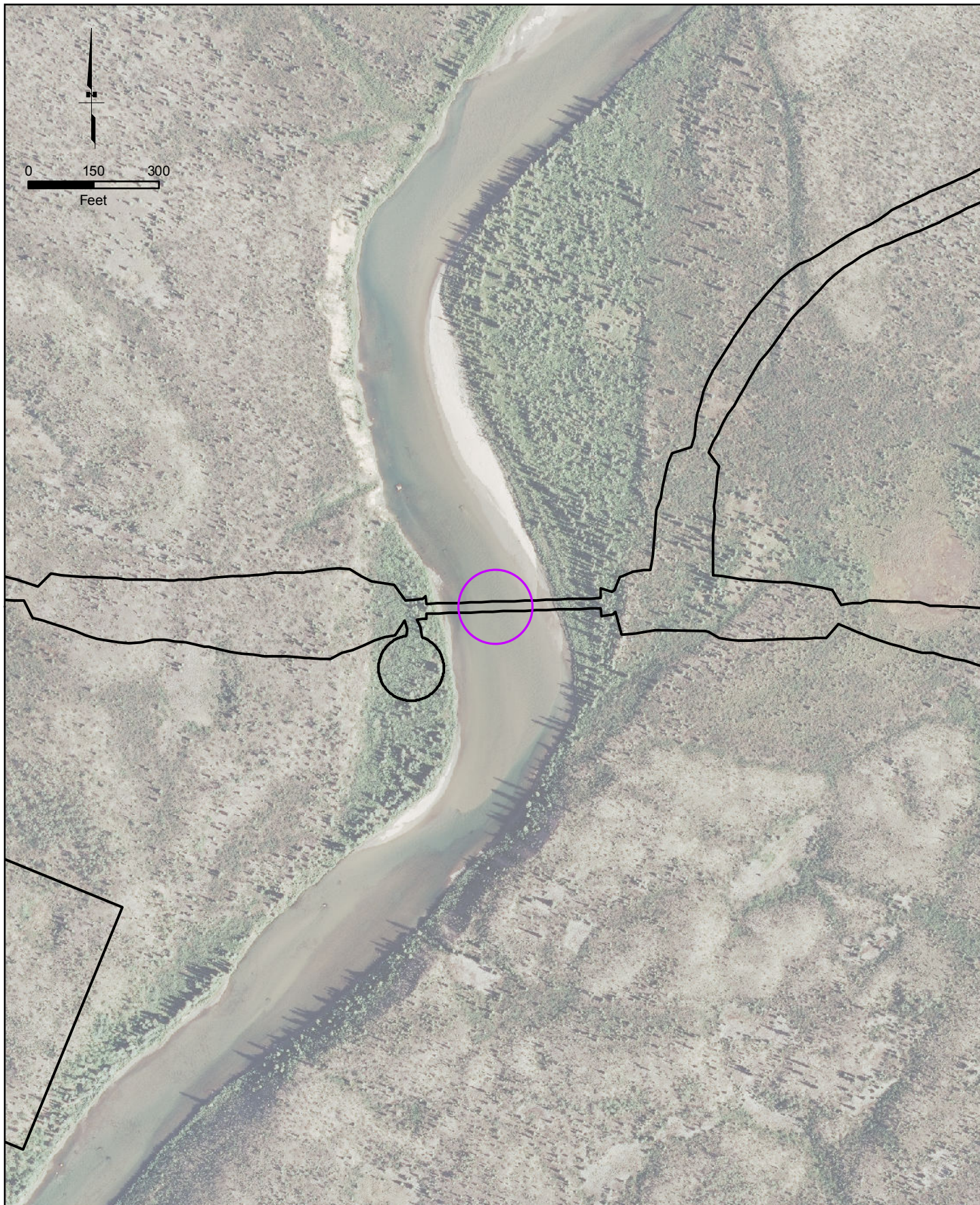


USCG Bridge Program Review
No. 15, Unnamed Creek

Ambler Mining District
Industrial Access Project

April 19, 2016

Figure 21



- Large Bridge
- Medium Bridge
- Small Bridge



USCG Bridge Program Review
No. 16, Reed River

Ambler Mining District
Industrial Access Project

April 19, 2016

Figure 22



- Large Bridge
- Medium Bridge
- Small Bridge

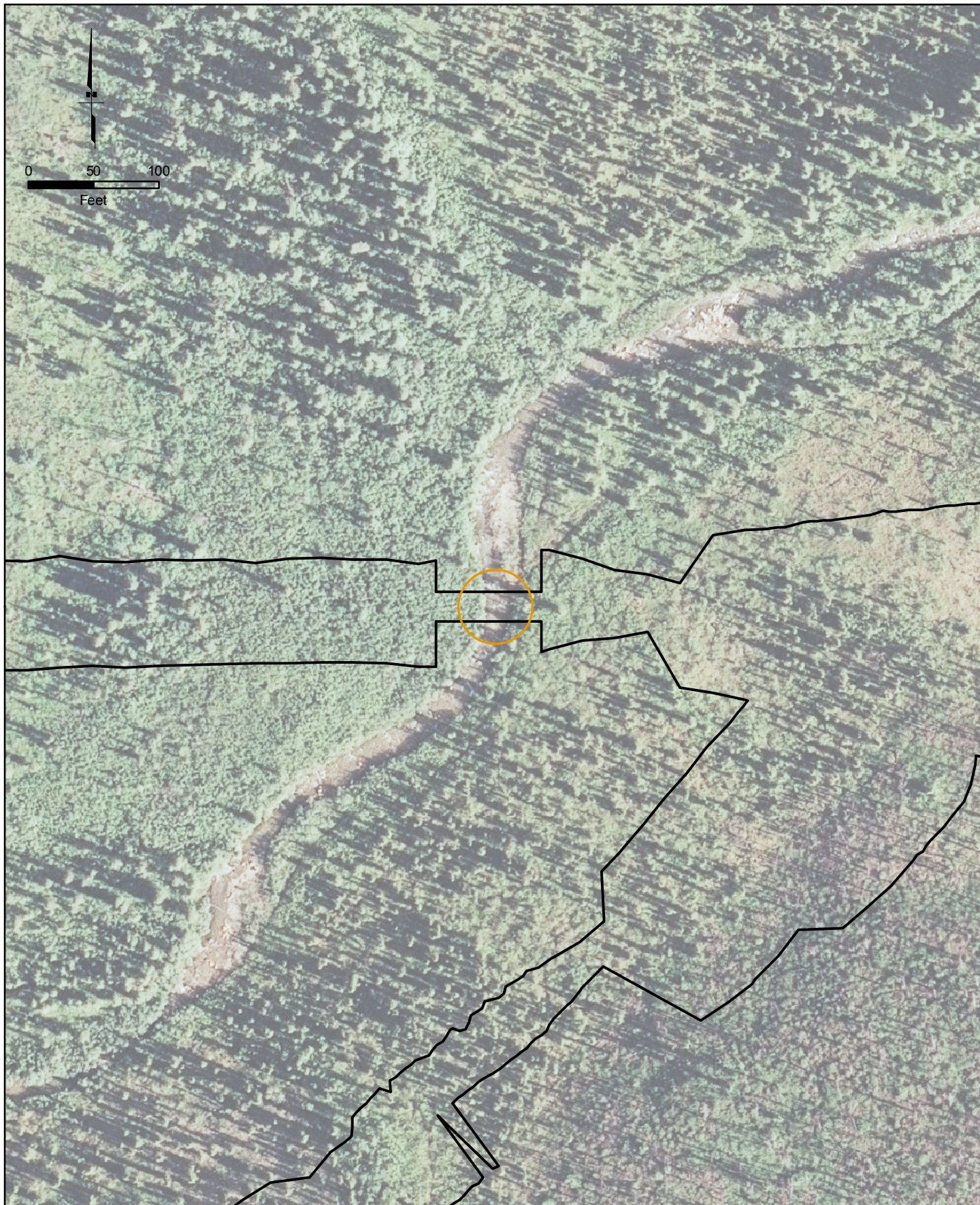


USCG Bridge Program Review
No. 17, Beaver Creek

Ambler Mining District
Industrial Access Project

April 19, 2016

Figure 23



- Large Bridge
- Medium Bridge
- Small Bridge



USCG Bridge Program Review
No. 18, Krumpet Creek

Ambler Mining District
Industrial Access Project

April 19, 2016

Figure 24



- Large Bridge
- Medium Bridge
- Small Bridge



USCG Bridge Program Review
No. 19, Coal Creek

Ambler Mining District
Industrial Access Project

April 19, 2016

Figure 25



- Large Bridge
- Medium Bridge
- Small Bridge

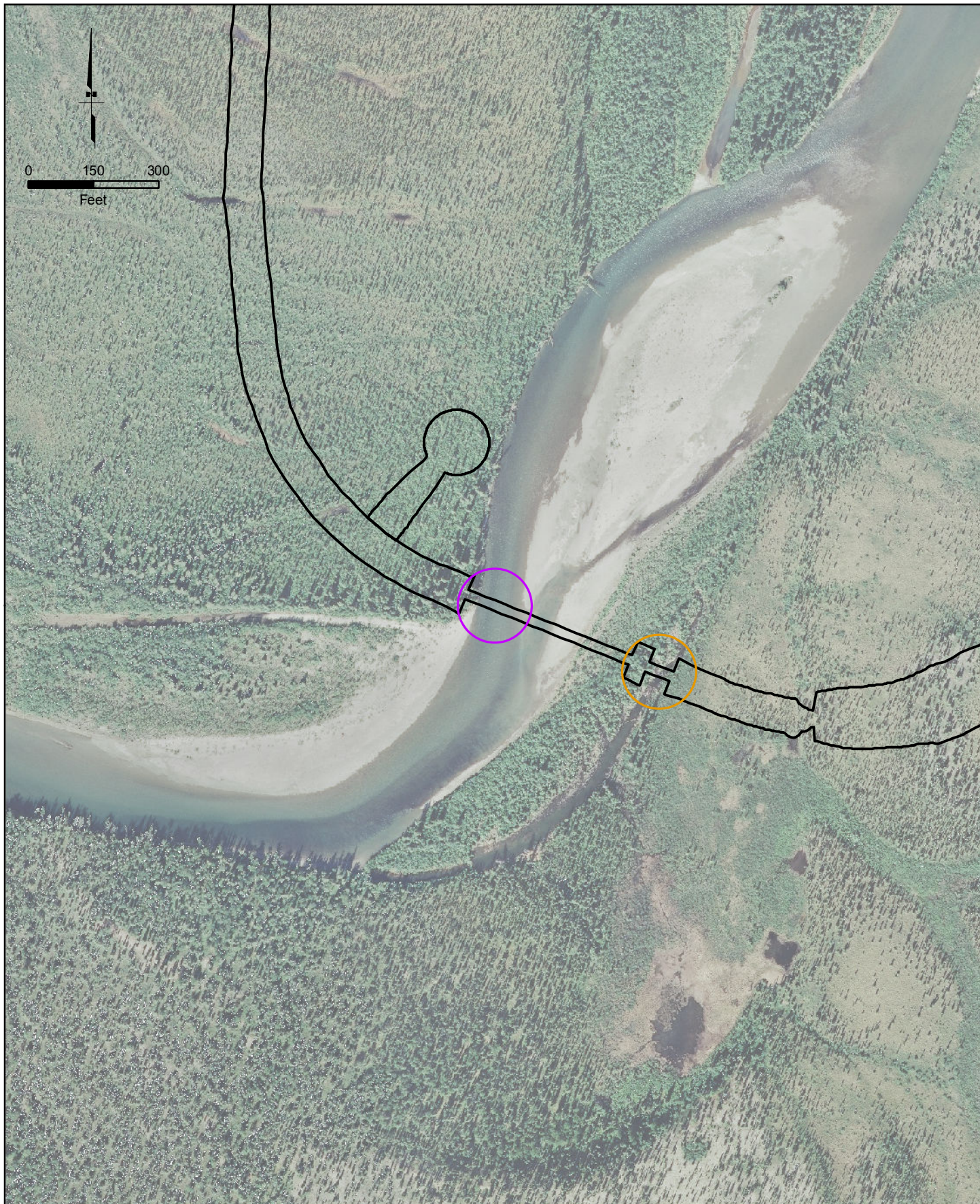


USCG Bridge Program Review
No. 20, Mauneluk River Side Channel

Ambler Mining District
Industrial Access Project

April 19, 2016

Figure 26



- Large Bridge
- Medium Bridge
- Small Bridge



USCG Bridge Program Review
No. 21, Mauneluk River

Ambler Mining District
Industrial Access Project

April 19, 2016

Figure 27



- Large Bridge
- Medium Bridge
- Small Bridge

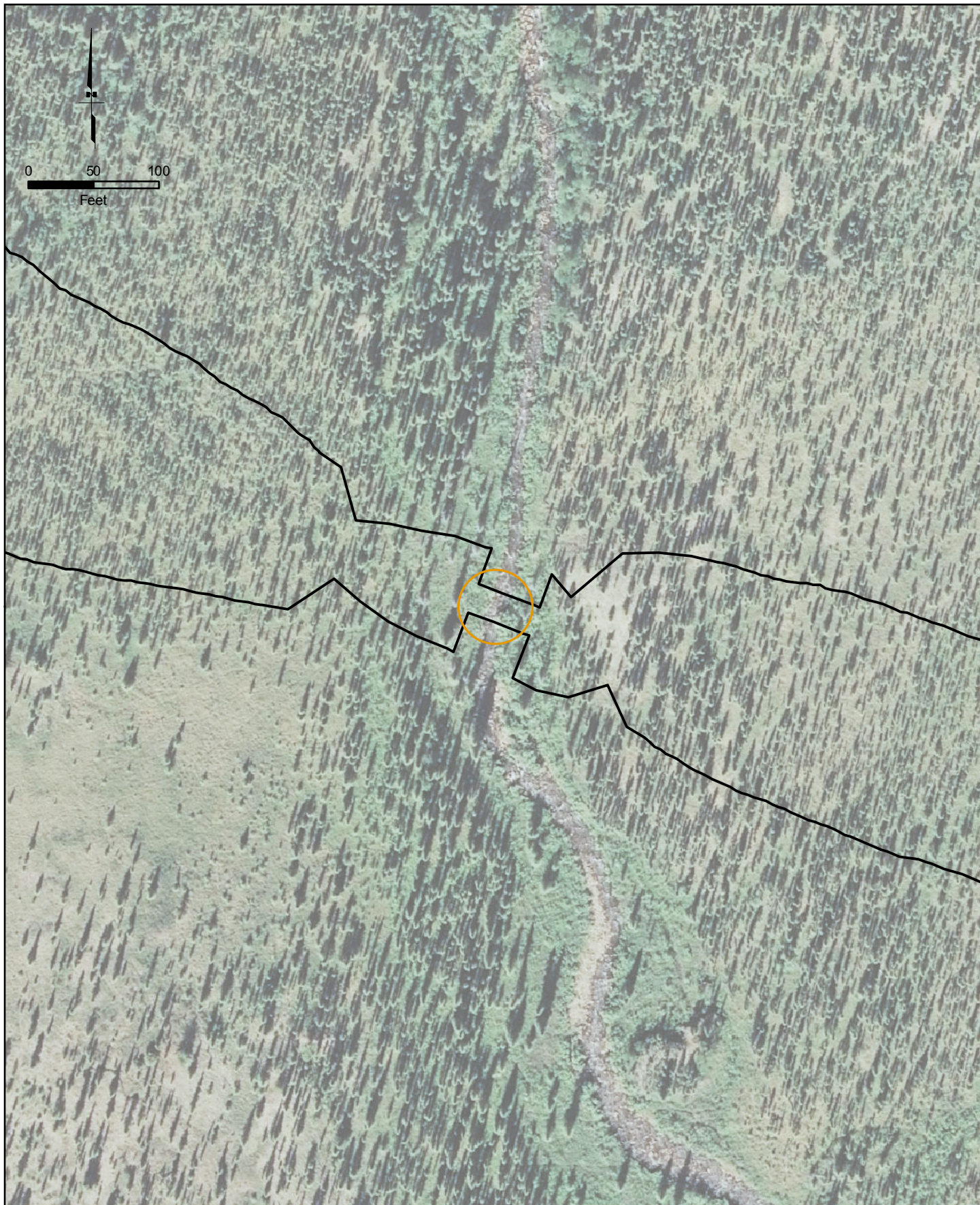


USCG Bridge Program Review
No. 22, Huffman Creek

Ambler Mining District
Industrial Access Project

April 19, 2016

Figure 28



- Large Bridge
- Medium Bridge
- Small Bridge



USCG Bridge Program Review
No. 23, Halfman Creek

Ambler Mining District
Industrial Access Project

April 19, 2016

Figure 29



- Large Bridge
- Medium Bridge
- Small Bridge



USCG Bridge Program Review
No. 24, Square Creek

Ambler Mining District
Industrial Access Project

April 19, 2016

Figure 30



- Large Bridge
- Medium Bridge
- Small Bridge

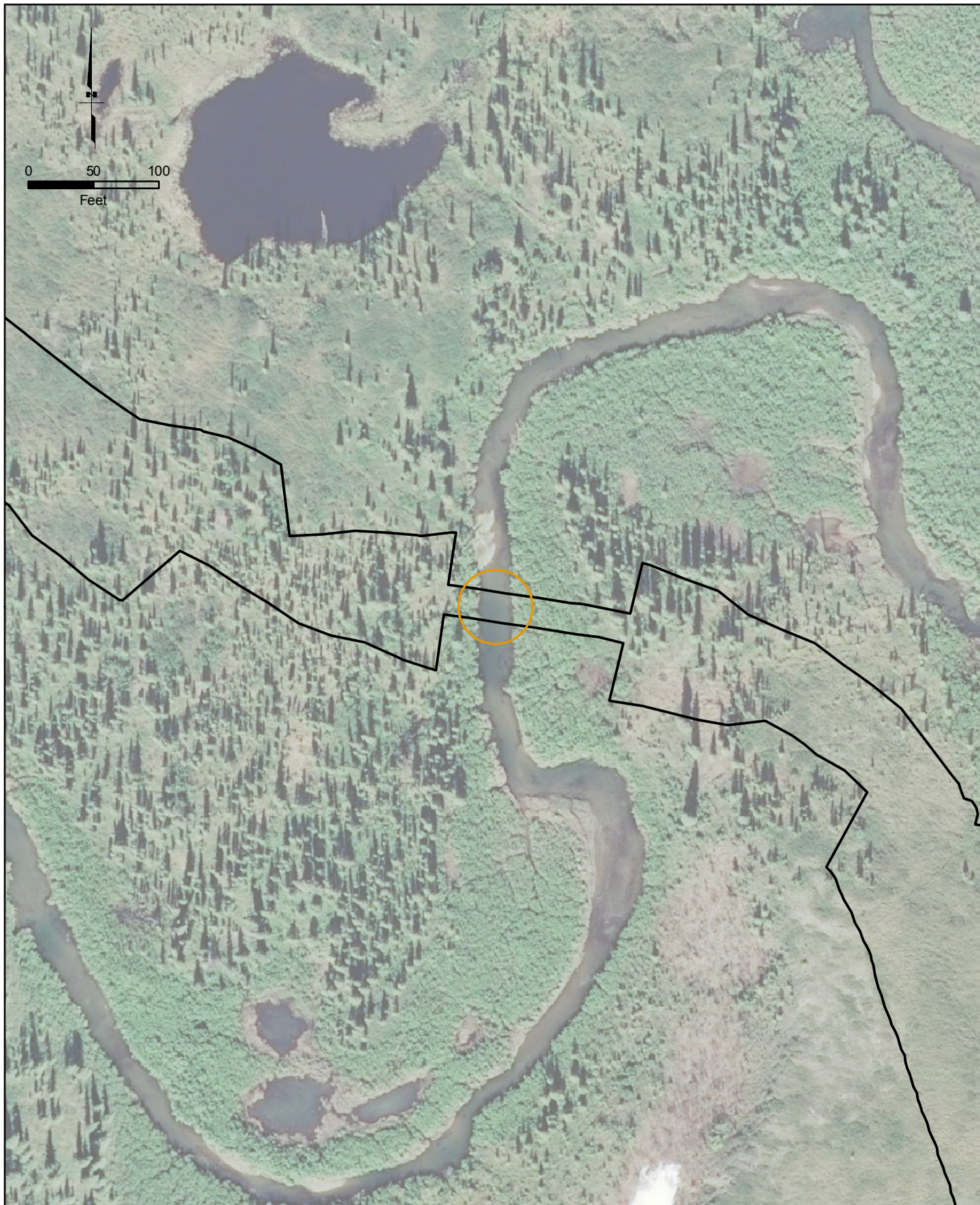


USCG Bridge Program Review
No. 25, Kogoluktuk River

Ambler Mining District
Industrial Access Project

April 19, 2016

Figure 31



- Large Bridge
- Medium Bridge
- Small Bridge



USCG Bridge Program Review
No. 26, Ruby Creek

Ambler Mining District
Industrial Access Project

April 19, 2016

Figure 32



- Large Bridge
- Medium Bridge
- Small Bridge

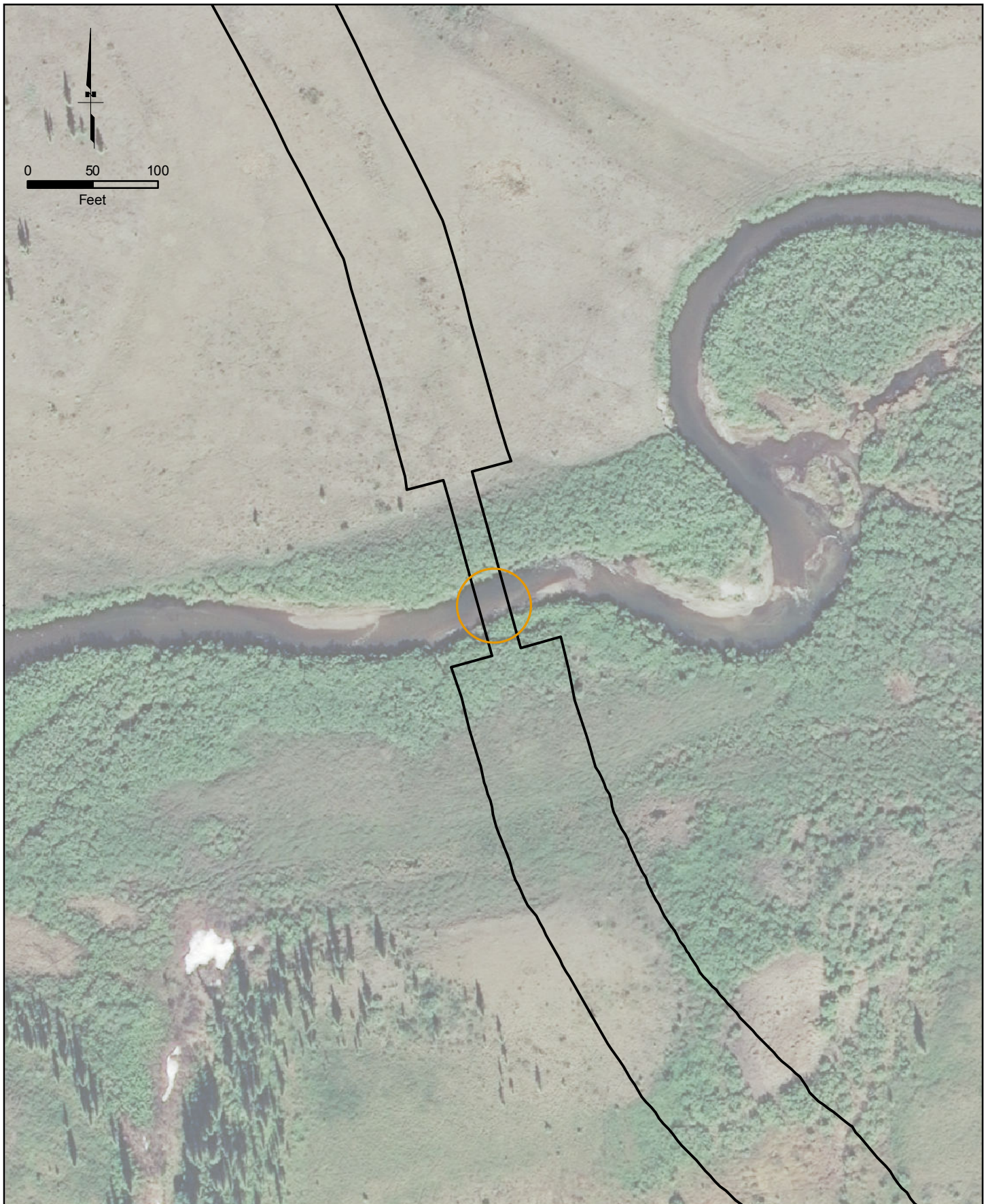


USCG Bridge Program Review
No. 27, Shungnak River

Ambler Mining District
Industrial Access Project

April 19, 2016

Figure 33



- Large Bridge
- Medium Bridge
- Small Bridge

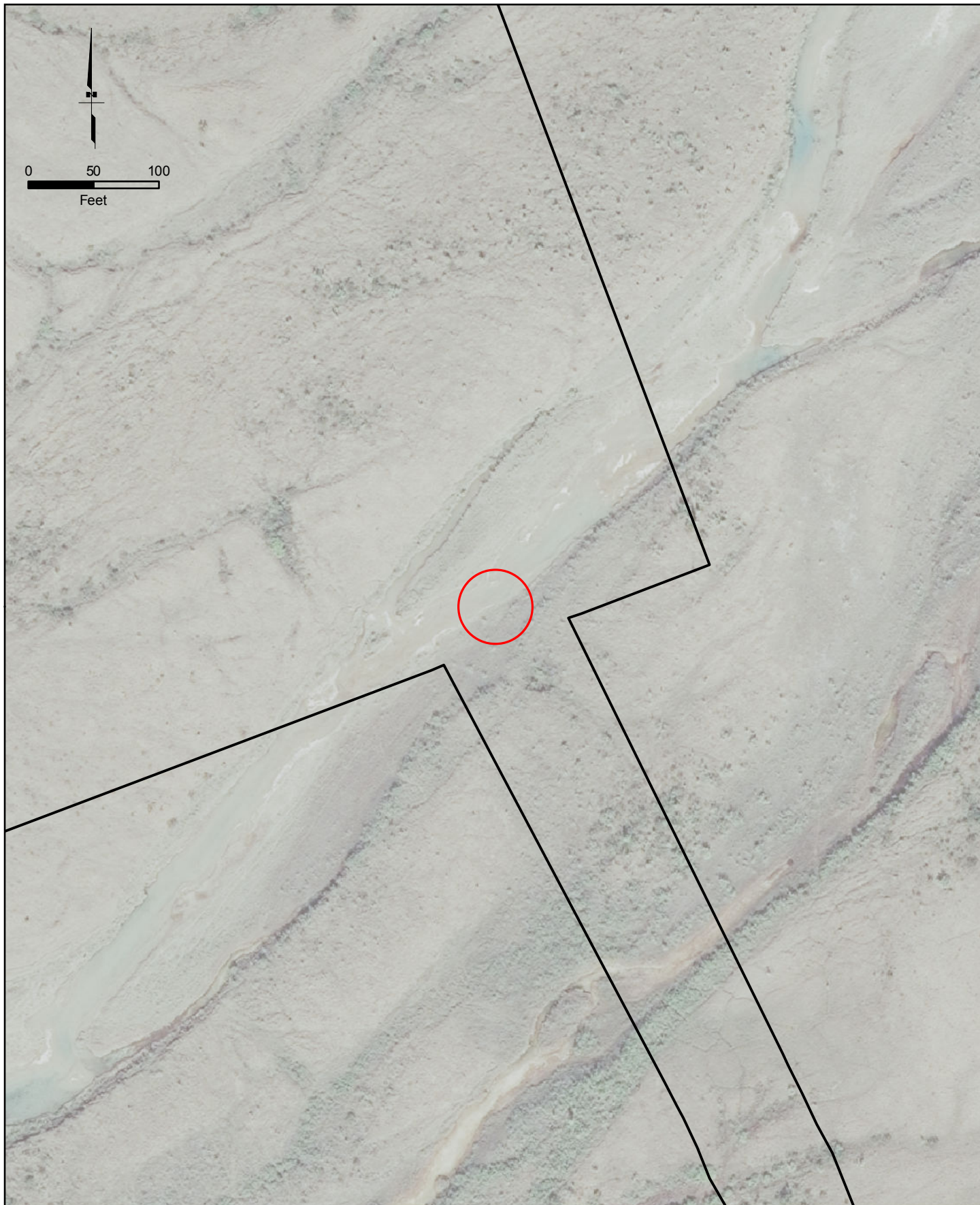


USCG Bridge Program Review
No. 28, Unnamed Creek

Ambler Mining District
Industrial Access Project

April 19, 2016

Figure 34



- Large Bridge
- Medium Bridge
- Small Bridge



USCG Bridge Program Review
No. 29, Ambler River Side Channel

Ambler Mining District
Industrial Access Project

April 19, 2016

Figure 35