

Preliminary Alternatives for Visitor Center at USS *Arizona* Memorial

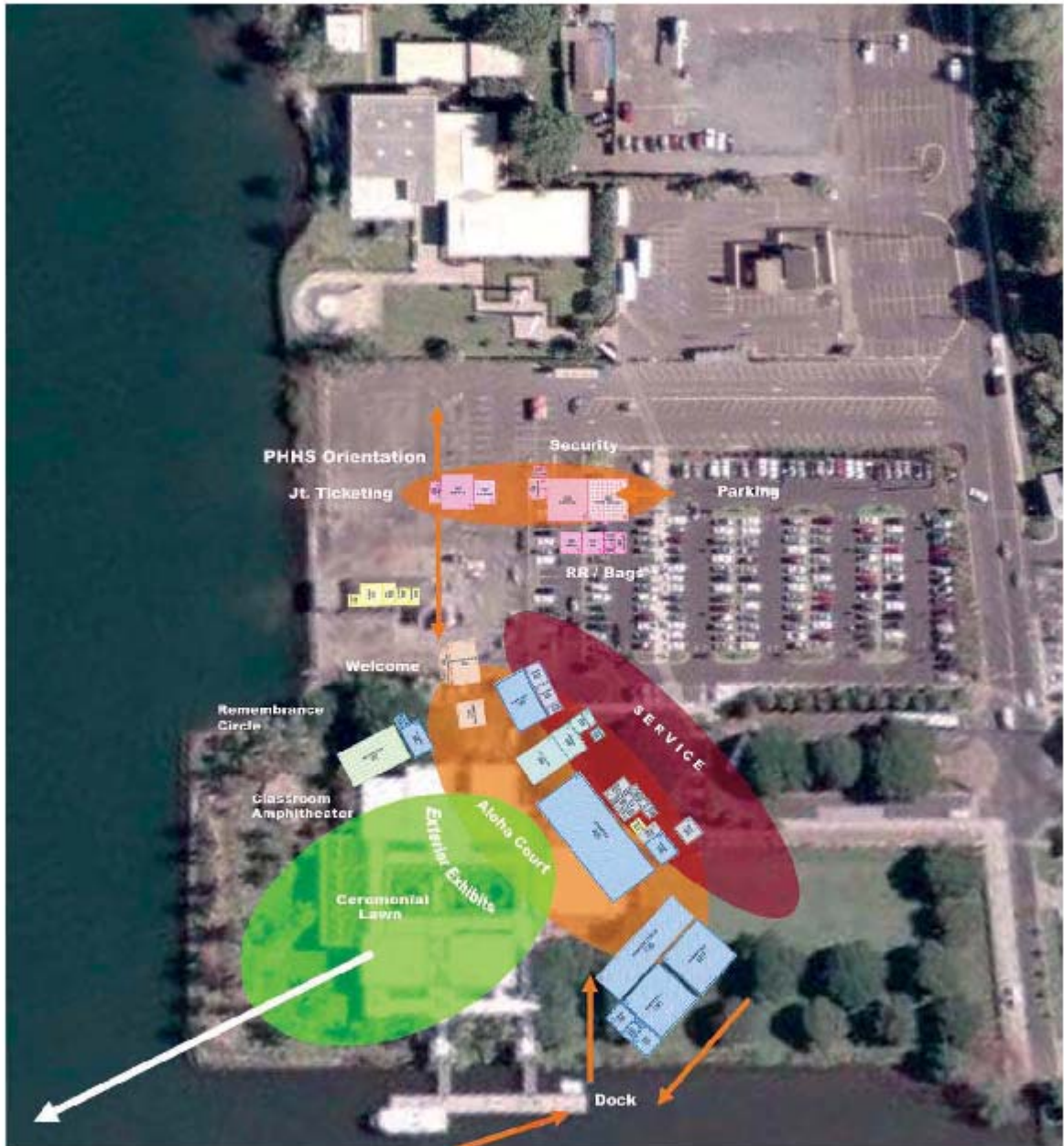
The National Park Service (NPS) has initiated planning for a project to replace the Visitor Center at the USS *Arizona* Memorial. Currently, the building is deteriorating due to foundation failure and differential settling of footings. In addition, the visitor experience has been impacted by long lines and wait times to visit the memorial. The NPS is preparing alternatives to replace the facility to provide an improved visitor experience and resolve the structural challenges. The Visitor Center is located at the Pearl Harbor Naval Base, and is owned and operated by the National Park Service. As part of the planning phase, the NPS held two public open houses at the USS *Arizona* Visitor Center to present possible alternatives that are being considered.

Alternative A: No Action (Continue Current Management)

Short-term “band-aid” repairs could continue to be made and prolong the useful life of the structure for up to 8 years.



Alternative B: Construct a new visitor center facility at the existing location.



Alternative C: Construct a new visitor center facility just north of the existing facility (adjacent to the USS *Bowfin*).



The public will be able to comment on the alternatives through September 16, 2006. Subsequently, the NPS will prepare and distribute environmental documentation for public review. We look forward to your comments.