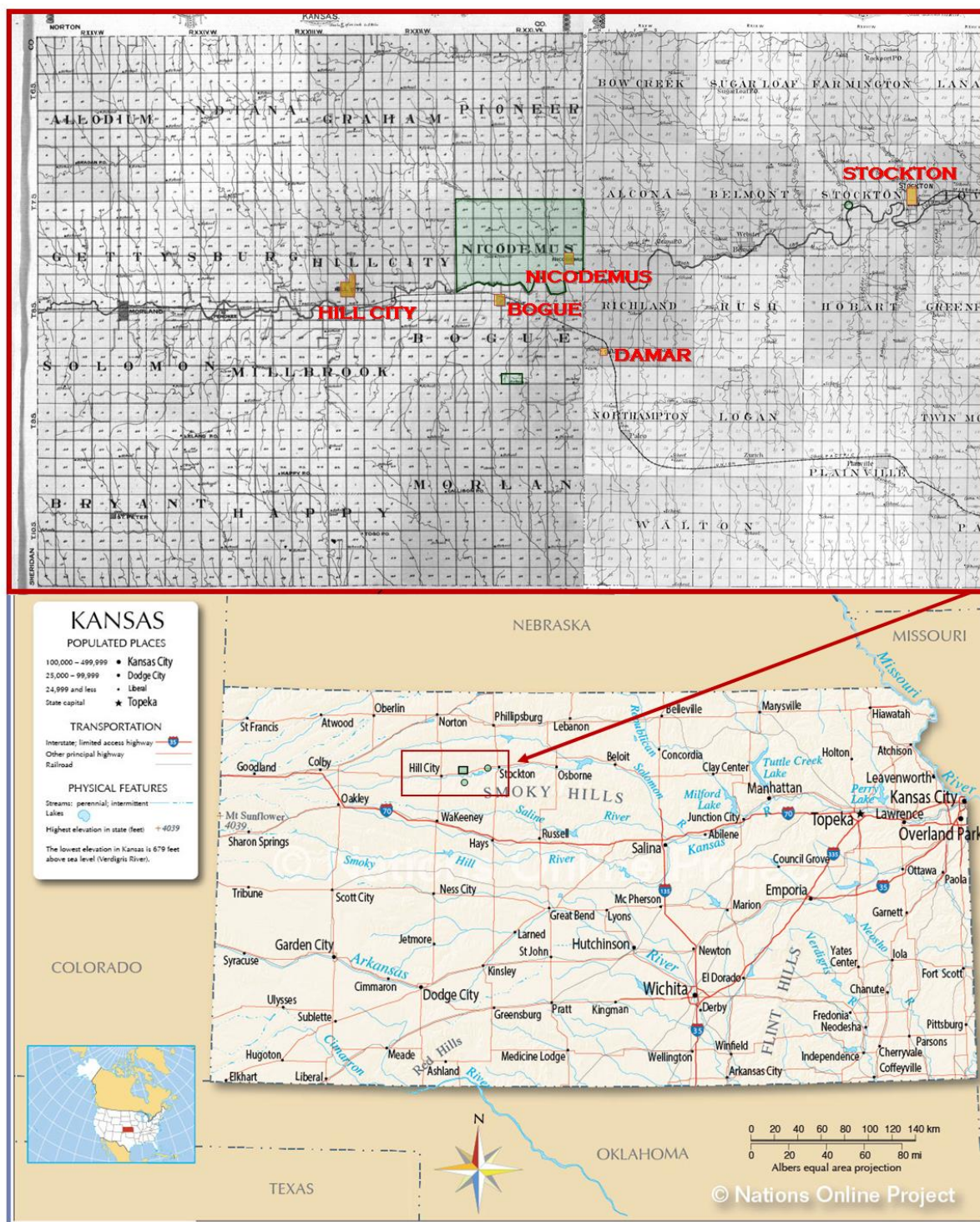


NICODEMUS HISTORIC DISTRICT**Figures**

United States Department of the Interior, National Park Service

National Register of Historic Places Registration Form



Overview Maps. Top image created from Kansas Historical Society, *Standard Atlas of Graham County*, 1906, and *Standard Atlas of Rooks County*, 1904-1905, <http://www.kansasmemory.org/>. Bottom image: "Reference Map of Kansas," Nations Online Project, http://www.nationsonline.org/one-world/map/USA/kansas_map.htm.

NICODEMUS HISTORIC DISTRICT

United States Department of the Interior, National Park Service

Figures

National Register of Historic Places Registration Form



John and Leeanna Samuels. Courtesy Nicodemus Historical Society.

NICODEMUS HISTORIC DISTRICT

United States Department of the Interior, National Park Service

Figures

National Register of Historic Places Registration Form



Charles and Emma Williams Family. Courtesy Nicodemus Historical Society.

NICODEMUS HISTORIC DISTRICT

United States Department of the Interior, National Park Service

Figures

National Register of Historic Places Registration Form



Henry H. Williams, first baby born in Nicodemus, a month after the colonists arrived in 1877. Courtesy Graham County Historical Society.

NICODEMUS HISTORIC DISTRICT

United States Department of the Interior, National Park Service

Figures

National Register of Historic Places Registration Form



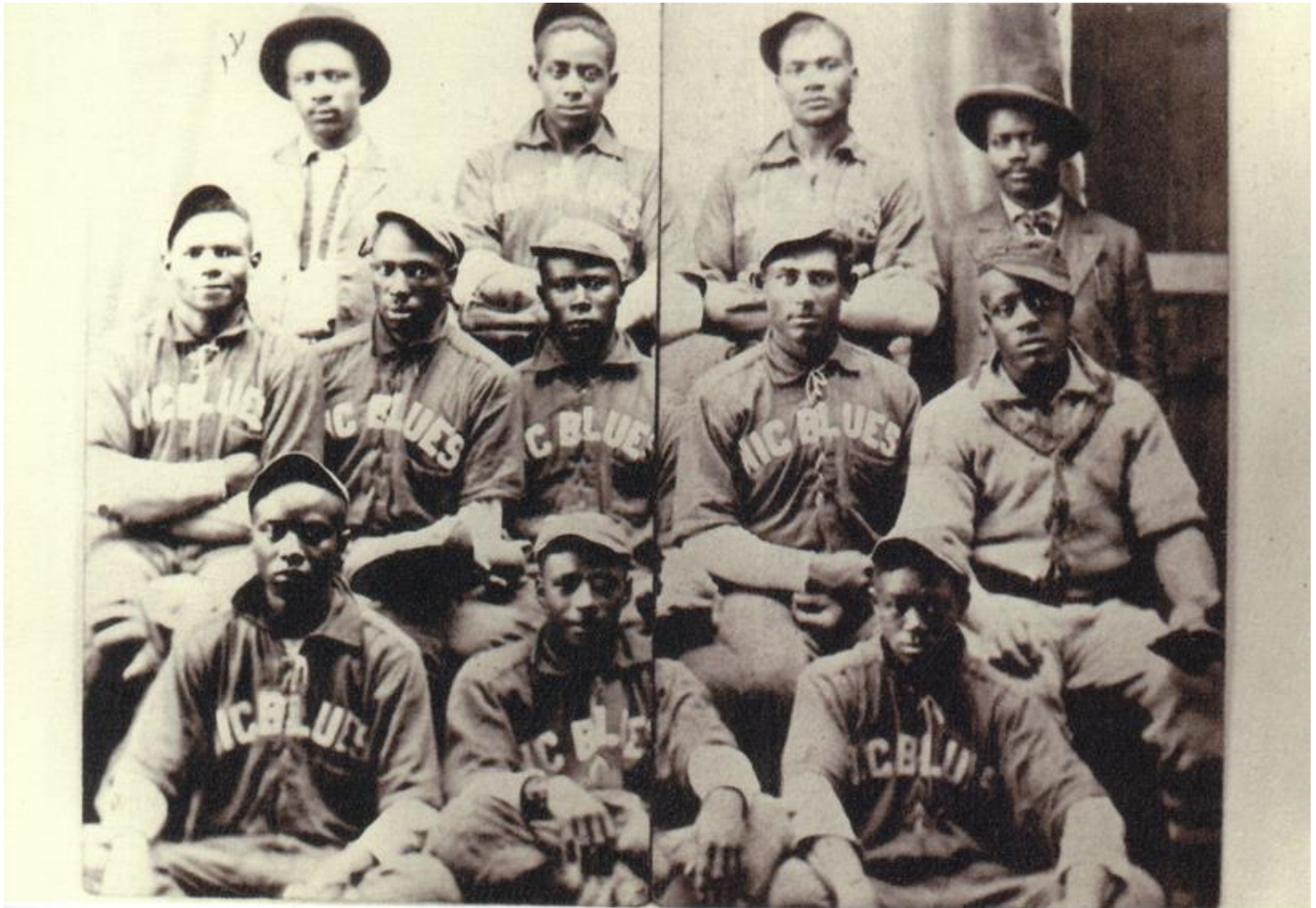
George M. Sayers Store building, built in 1880 by S. G. Wilson. Courtesy Graham County Historical Society.

NICODEMUS HISTORIC DISTRICT

United States Department of the Interior, National Park Service

Figures

National Register of Historic Places Registration Form



Nicodemus Blues, 1907. Back row (l-r): Jim Merrit, manager; Cass Bibb; Hayes Porter; Neal Saddler. 2nd row (l-r): Bill Riley; Inky Balckburn; Happy Sparks; Frank Bronson; Bill Kirk. Front row (l-r): Charles "Doc" Vaughn; Steve Demery; Raleigh Stewart. Courtesy Graham County Historical Society; from original loaned by Fred and Ora Switzer.

NICODEMUS HISTORIC DISTRICT

United States Department of the Interior, National Park Service

Figures

National Register of Historic Places Registration Form



Three ladies from Nicodemus. Courtesy Nicodemus Historical Society.

NICODEMUS HISTORIC DISTRICT

United States Department of the Interior, National Park Service

Figures

National Register of Historic Places Registration Form



1953 aerial view of Nicodemus townsite. Library of Congress image, HABS KANS, 33-NICO, 1—8.

NICODEMUS HISTORIC DISTRICT

United States Department of the Interior, National Park Service

Figures

National Register of Historic Places Registration Form



Nicodemus Homecoming Parade, 1997. From www.nicodemuskansas.org.