

# Dwight D. Eisenhower Memorial Modification

Bound by Independence Avenue, 4th Street, and 6th Streets, SW and by the  
Lyndon B. Johnson Department of Education Headquarters Building

---

United States Department of the Interior, National Park Service  
on behalf of the Dwight D. Eisenhower Memorial Commission

Revised Concept Design

February 2, 2017



**September  
2006**

February  
2011

April  
2014

October  
2014

July  
2015

February  
2017

**Site and Design  
Principles**

Concept Design  
Alternatives

Preliminary Site and  
Building Plans

Preliminary Site and  
Building Plans

1. Final Site and  
Building Plans

Revised Concept  
Design

2. Maryland Avenue  
Closure and  
Transfer of  
Jurisdictions





September  
2006

**February  
2011**

April  
2014

October  
2014

July  
2015

February  
2017

Site and Design  
Principles

**Concept Design  
Alternatives**

Preliminary Site and  
Building Plans

Preliminary Site and  
Building Plans

1. Final Site and  
Building Plans

Revised Concept  
Design

2. Maryland Avenue  
Closure and  
Transfer of  
Jurisdictions





September  
2006

February  
2011

**April  
2014**

**October  
2014**

July  
2015

February  
2017

Site and Design  
Principles

Concept Design  
Alternatives

**Preliminary Site and  
Building Plans**

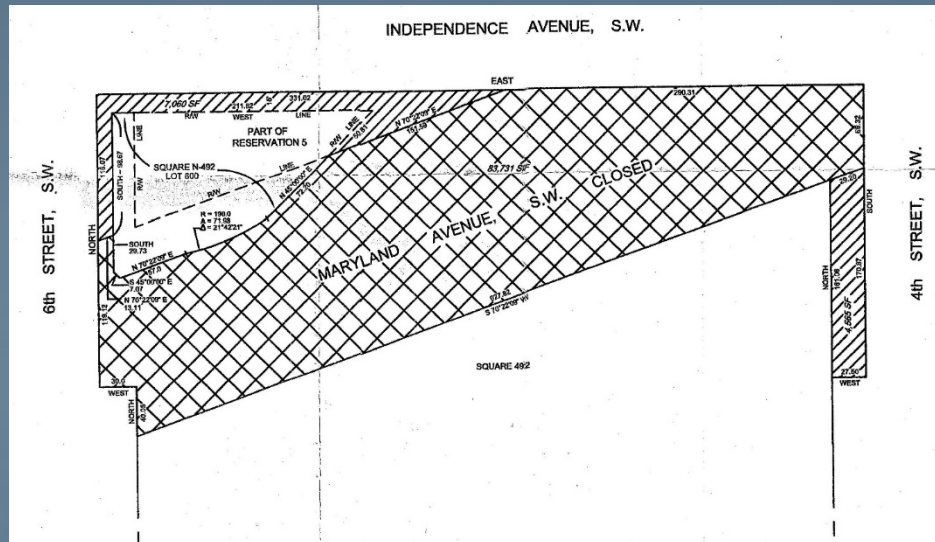
**Preliminary Site and  
Building Plans**

1. Final Site and  
Building Plans

Revised Concept  
Design

2. Maryland Avenue  
Closure and  
Transfer of  
Jurisdictions







September  
2006

February  
2011

April  
2014

October  
2014

July  
2015

**February  
2017**

Site and Design  
Principles

Concept Design  
Alternatives

Preliminary Site and  
Building Plans

Preliminary Site and  
Building Plans

1. Final Site and  
Building Plans

**Revised Concept  
Design**

2. Maryland Avenue  
Closure and  
Transfer of  
Jurisdictions

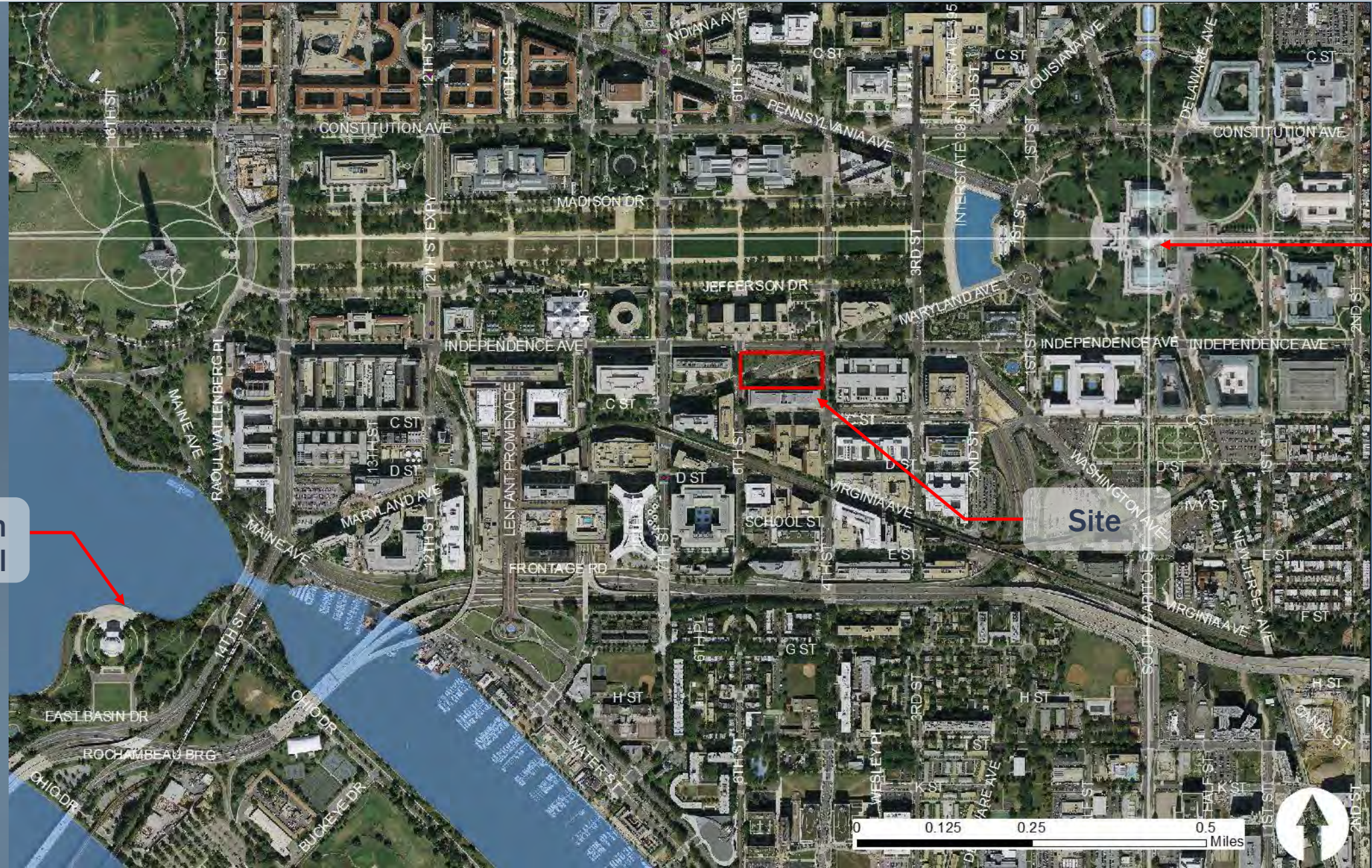




U.S. Capitol

Jefferson  
Memorial

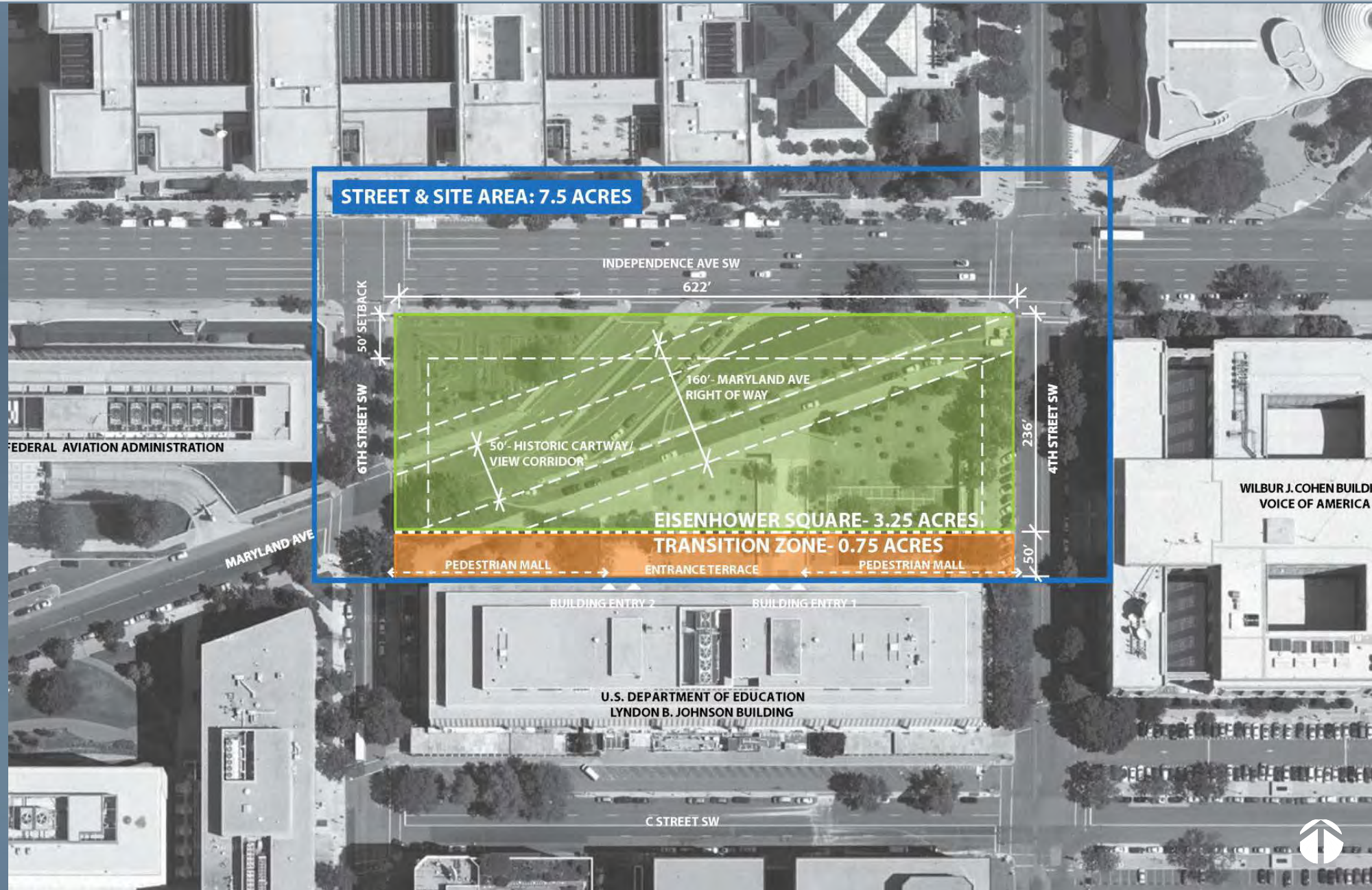
Site













1. Preserve reciprocal views to and from the U.S. Capitol along Maryland Avenue, SW.
2. Enhance the nature of the site as one in a sequence of public spaces embellishing the Maryland Avenue vista.
3. Create a unified memorial site that integrates the disparate parcels into a meaningful and functional public gathering place that also unifies the surrounding precinct.
4. Reflect L'Enfant Plan principles by shaping the memorial site as a separate and distinct public space that complements the Department of Education Headquarters and other surrounding buildings.
5. Respect and complement the architecture of the surrounding precinct.
6. Respect the building lines of the surrounding rights-of-way and the alignment of trees along Maryland Avenue.
7. Incorporate significant green space into the design of the memorial.



# Memorial Concept and Composition



Memorial Core



Tapestry and Columns



Landscape



Memorial Information Center

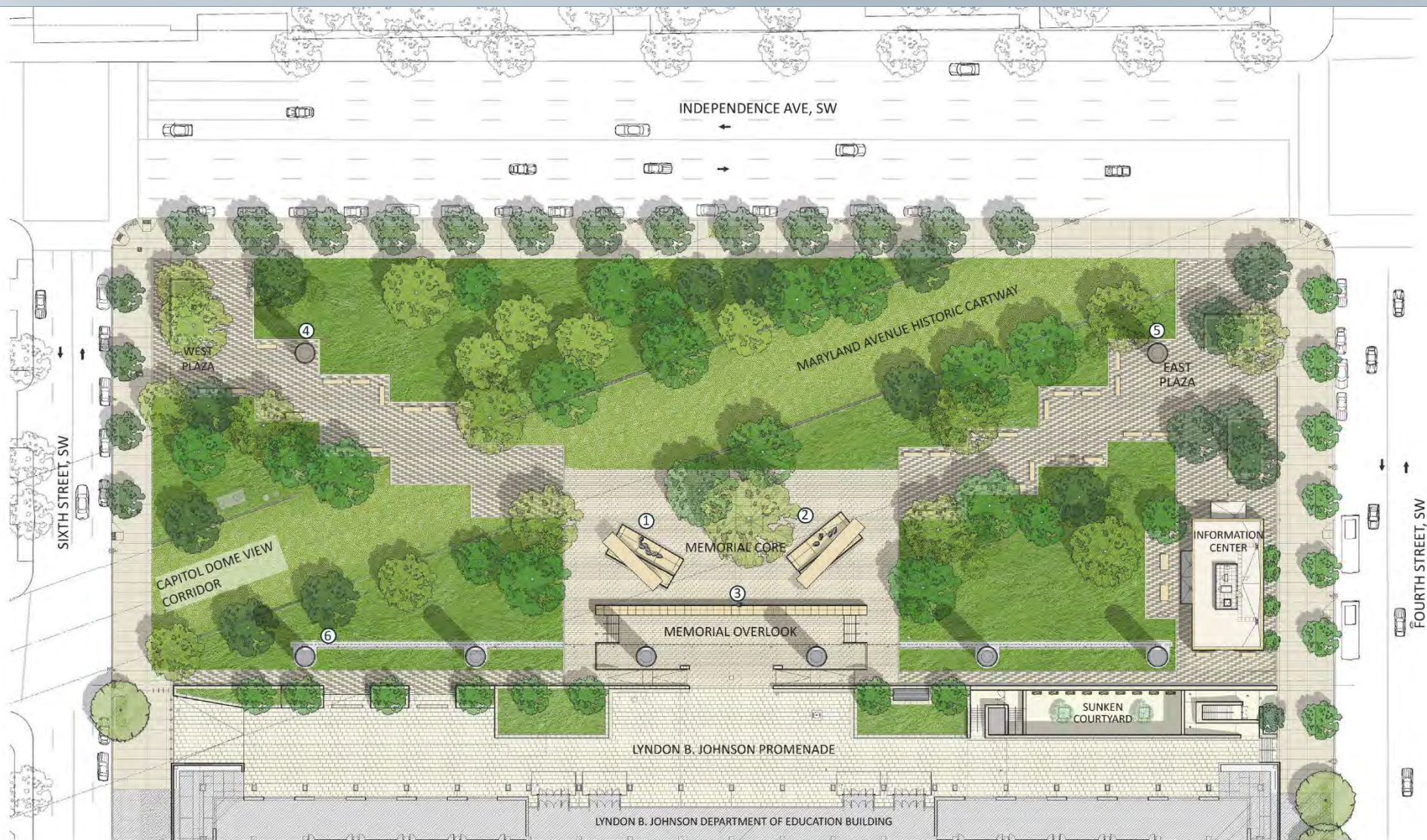


LBJ Promenade



Lighting



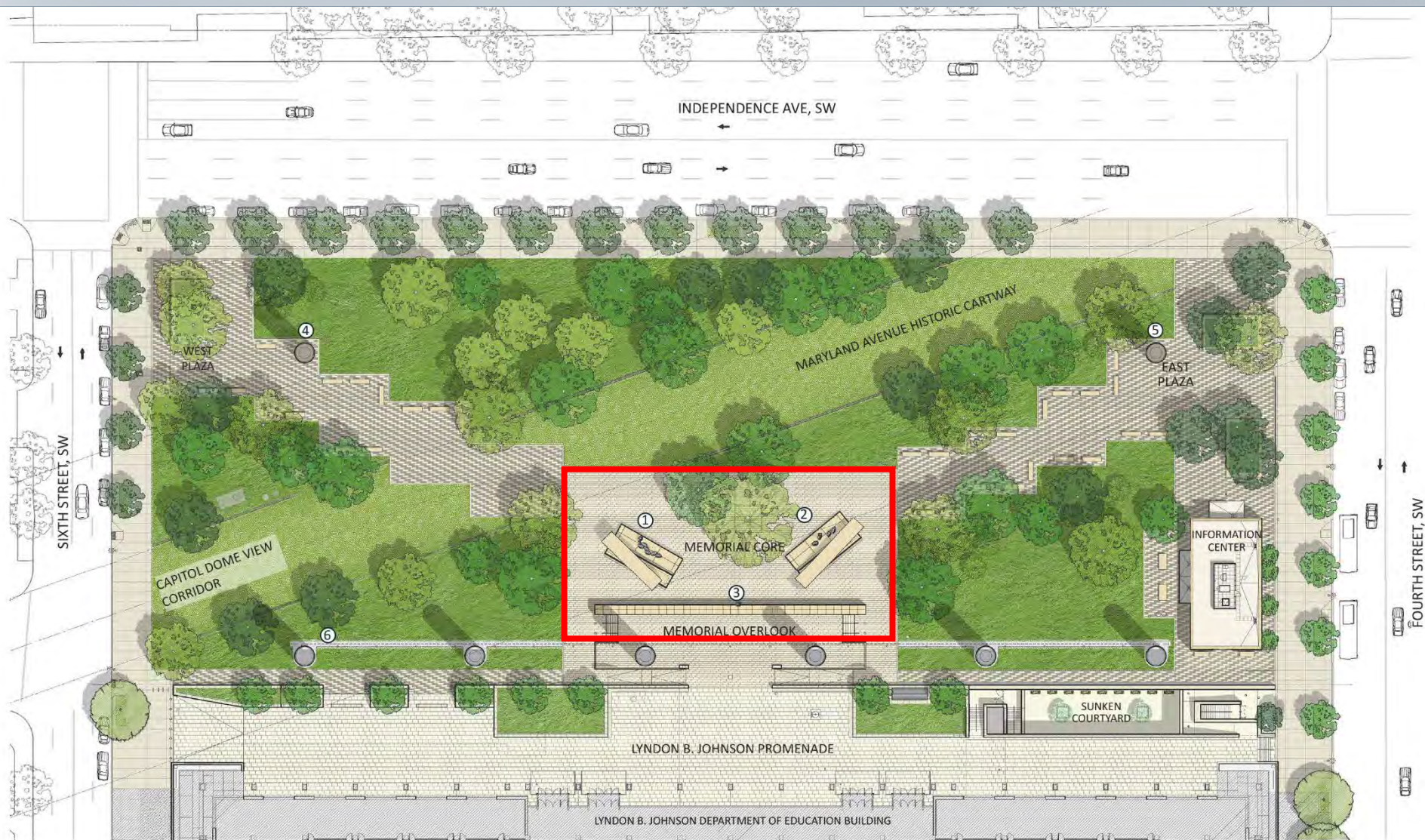


- ① GENERAL EISENHOWER MEMORIAL ELEMENT
- ② PRESIDENT EISENHOWER MEMORIAL ELEMENT
- ③ YOUNG EISENHOWER STATUE
- ④ GENERAL EISENHOWER COLUMN
- ⑤ PRESIDENT EISENHOWER COLUMN
- ⑥ SOUTH TAPESTRY



SITE PLAN



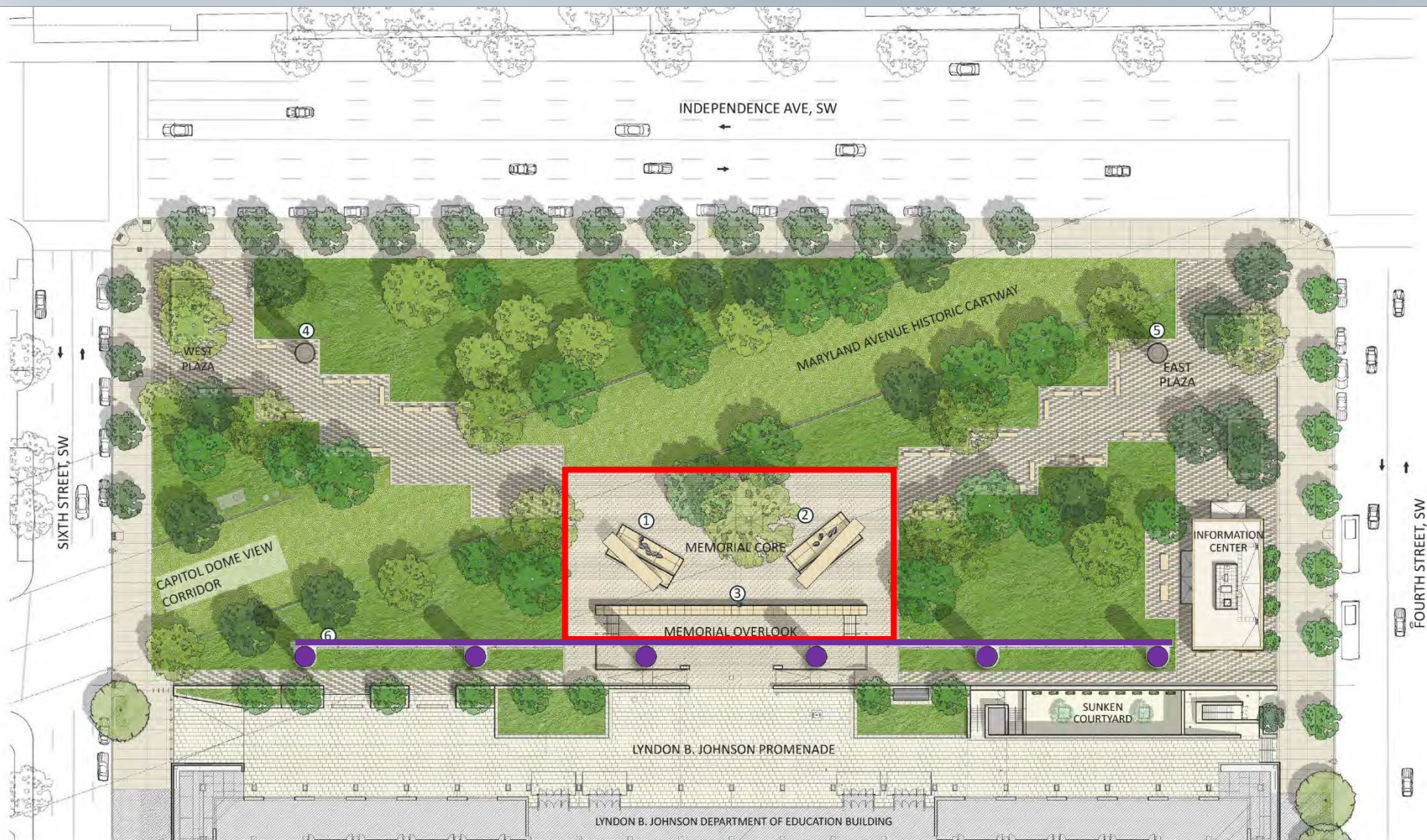


- ① GENERAL EISENHOWER MEMORIAL ELEMENT
- ② PRESIDENT EISENHOWER MEMORIAL ELEMENT
- ③ YOUNG EISENHOWER STATUE
- ④ GENERAL EISENHOWER COLUMN
- ⑤ PRESIDENT EISENHOWER COLUMN
- ⑥ SOUTH TAPESTRY



SITE PLAN



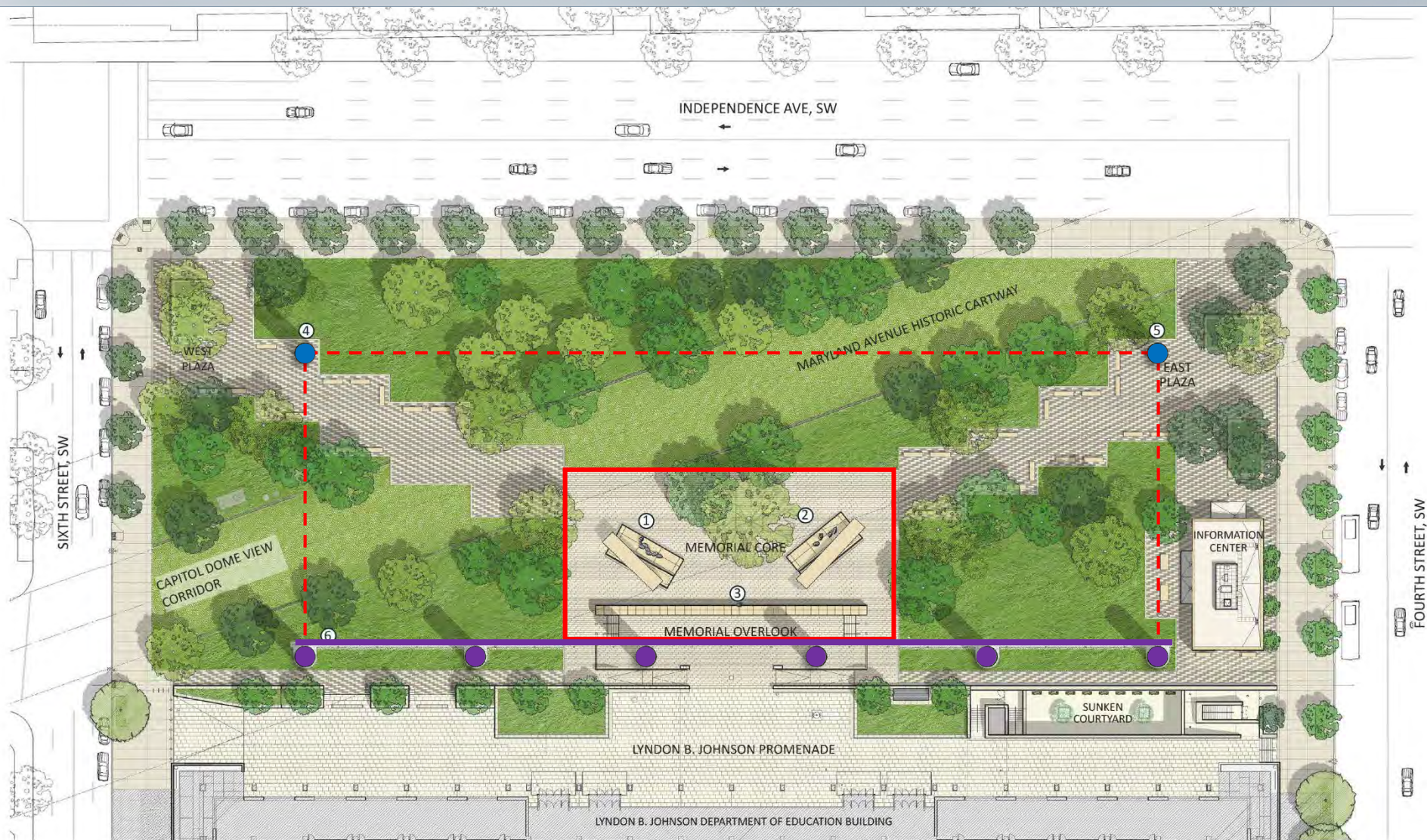


- ① GENERAL EISENHOWER MEMORIAL ELEMENT
- ② PRESIDENT EISENHOWER MEMORIAL ELEMENT
- ③ YOUNG EISENHOWER STATUE
- ④ GENERAL EISENHOWER COLUMN
- ⑤ PRESIDENT EISENHOWER COLUMN
- ⑥ SOUTH TAPESTRY

0' 5' 10' 20' 30'  
SITE PLAN

SITE PLAN



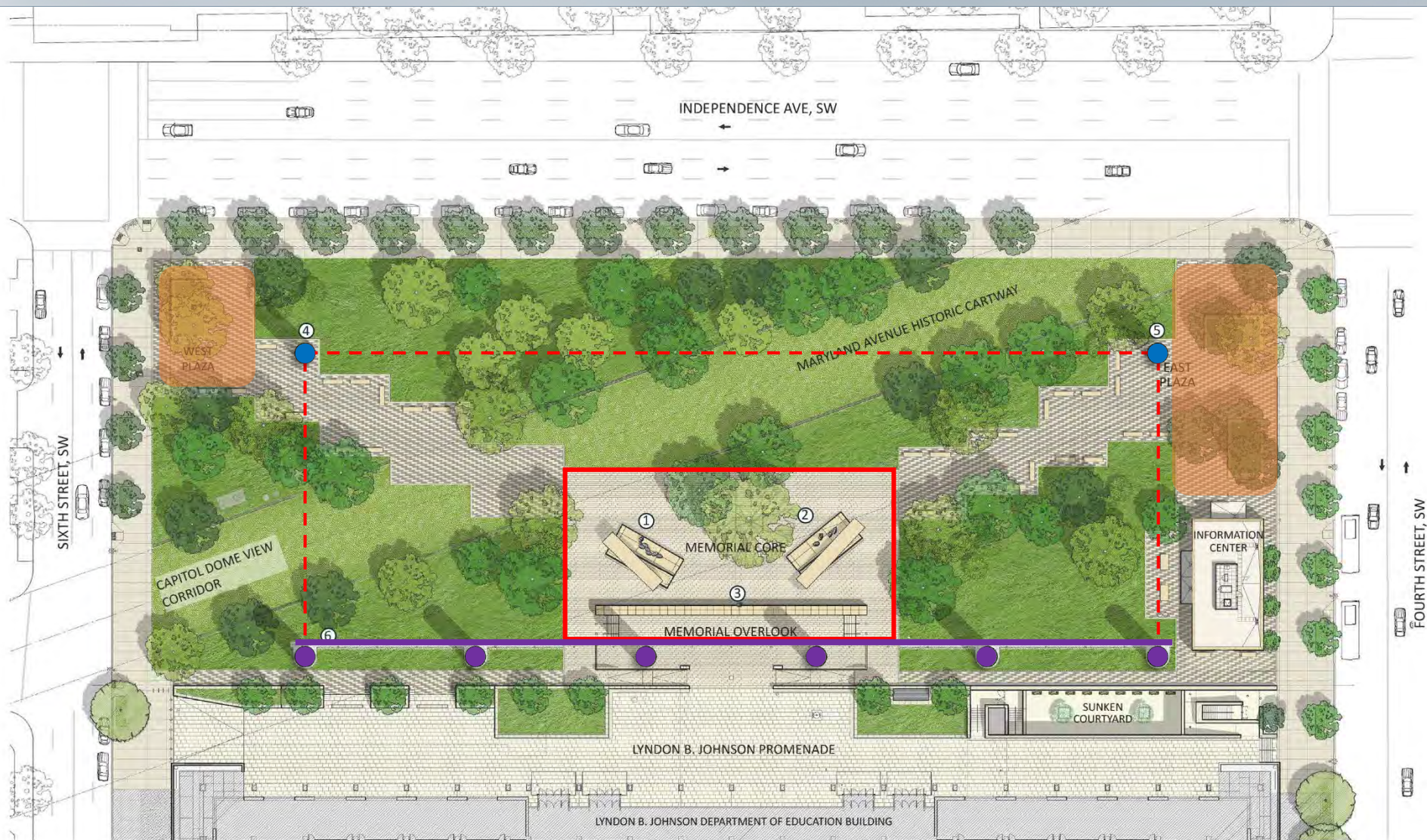


- ① GENERAL EISENHOWER MEMORIAL ELEMENT
- ② PRESIDENT EISENHOWER MEMORIAL ELEMENT
- ③ YOUNG EISENHOWER STATUE
- ④ GENERAL EISENHOWER COLUMN
- ⑤ PRESIDENT EISENHOWER COLUMN
- ⑥ SOUTH TAPESTRY



SITE PLAN



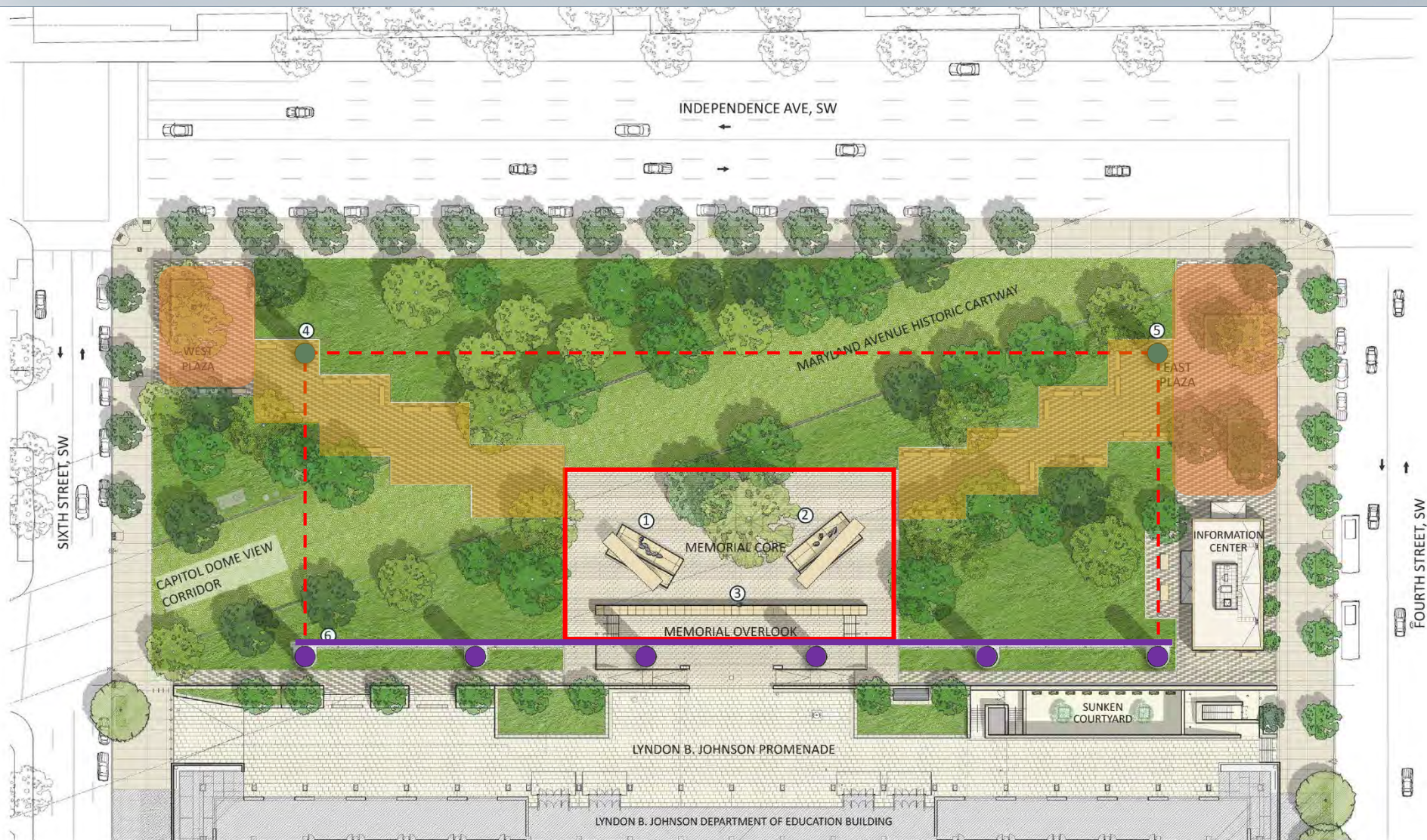


- ① GENERAL EISENHOWER MEMORIAL ELEMENT
- ② PRESIDENT EISENHOWER MEMORIAL ELEMENT
- ③ YOUNG EISENHOWER STATUE
- ④ GENERAL EISENHOWER COLUMN
- ⑤ PRESIDENT EISENHOWER COLUMN
- ⑥ SOUTH TAPESTRY

0' 5' 10' 20' 30'  
SITE PLAN

SITE PLAN



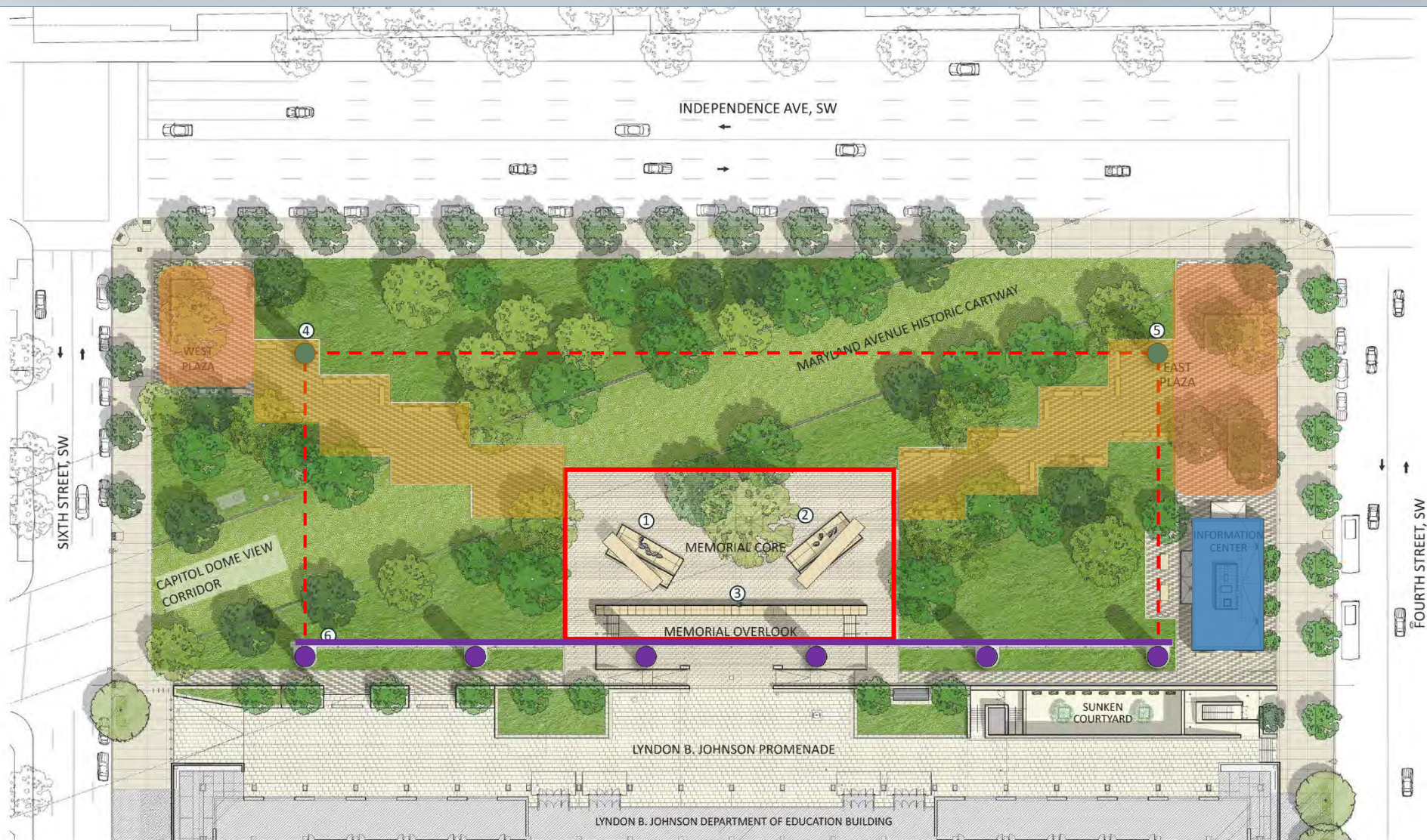


- ① GENERAL EISENHOWER MEMORIAL ELEMENT
- ② PRESIDENT EISENHOWER MEMORIAL ELEMENT
- ③ YOUNG EISENHOWER STATUE
- ④ GENERAL EISENHOWER COLUMN
- ⑤ PRESIDENT EISENHOWER COLUMN
- ⑥ SOUTH TAPESTRY

0' 5' 10' 20' 30'  
SITE PLAN

SITE PLAN



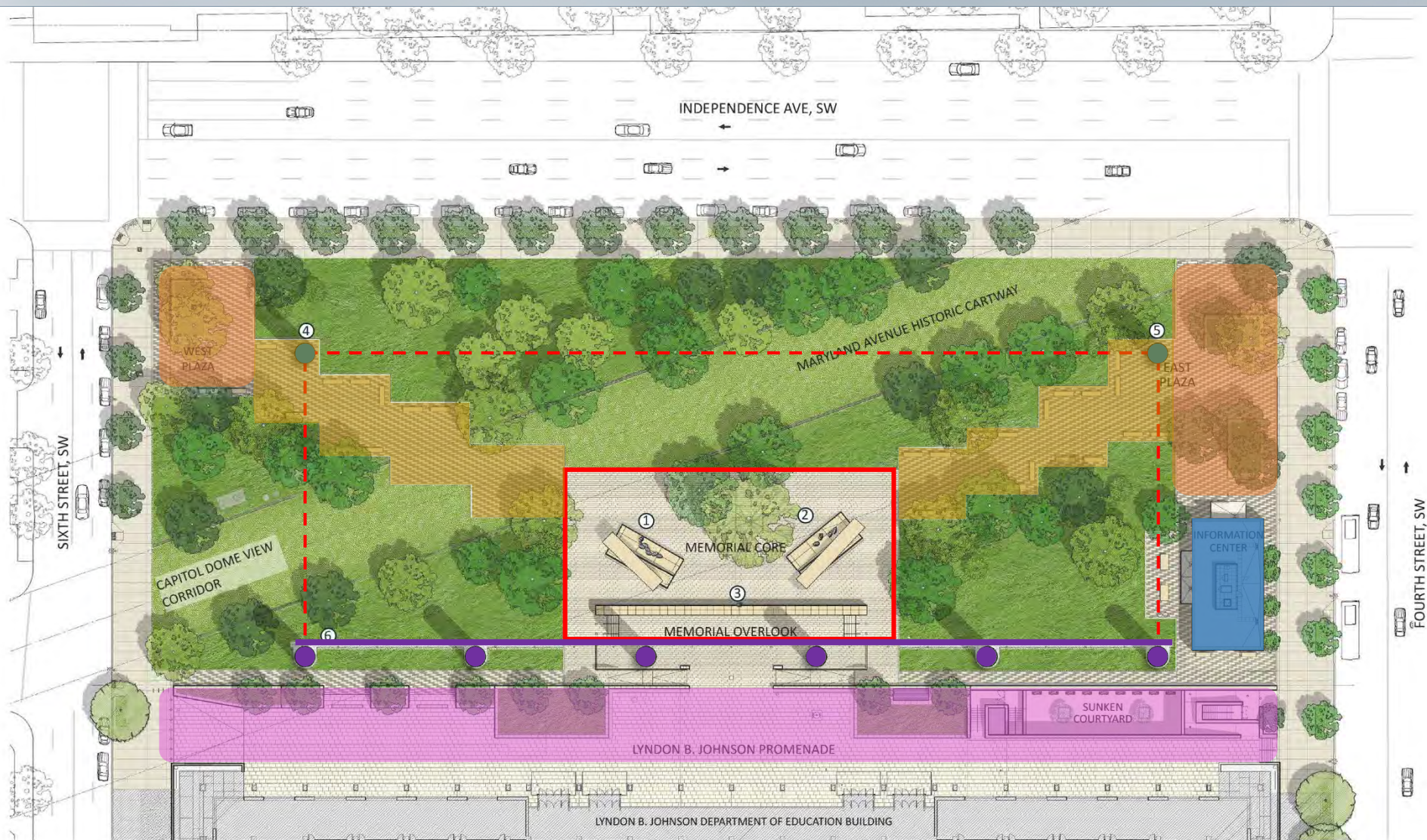


- ① GENERAL EISENHOWER MEMORIAL ELEMENT
- ② PRESIDENT EISENHOWER MEMORIAL ELEMENT
- ③ YOUNG EISENHOWER STATUE
- ④ GENERAL EISENHOWER COLUMN
- ⑤ PRESIDENT EISENHOWER COLUMN
- ⑥ SOUTH TAPESTRY



SITE PLAN



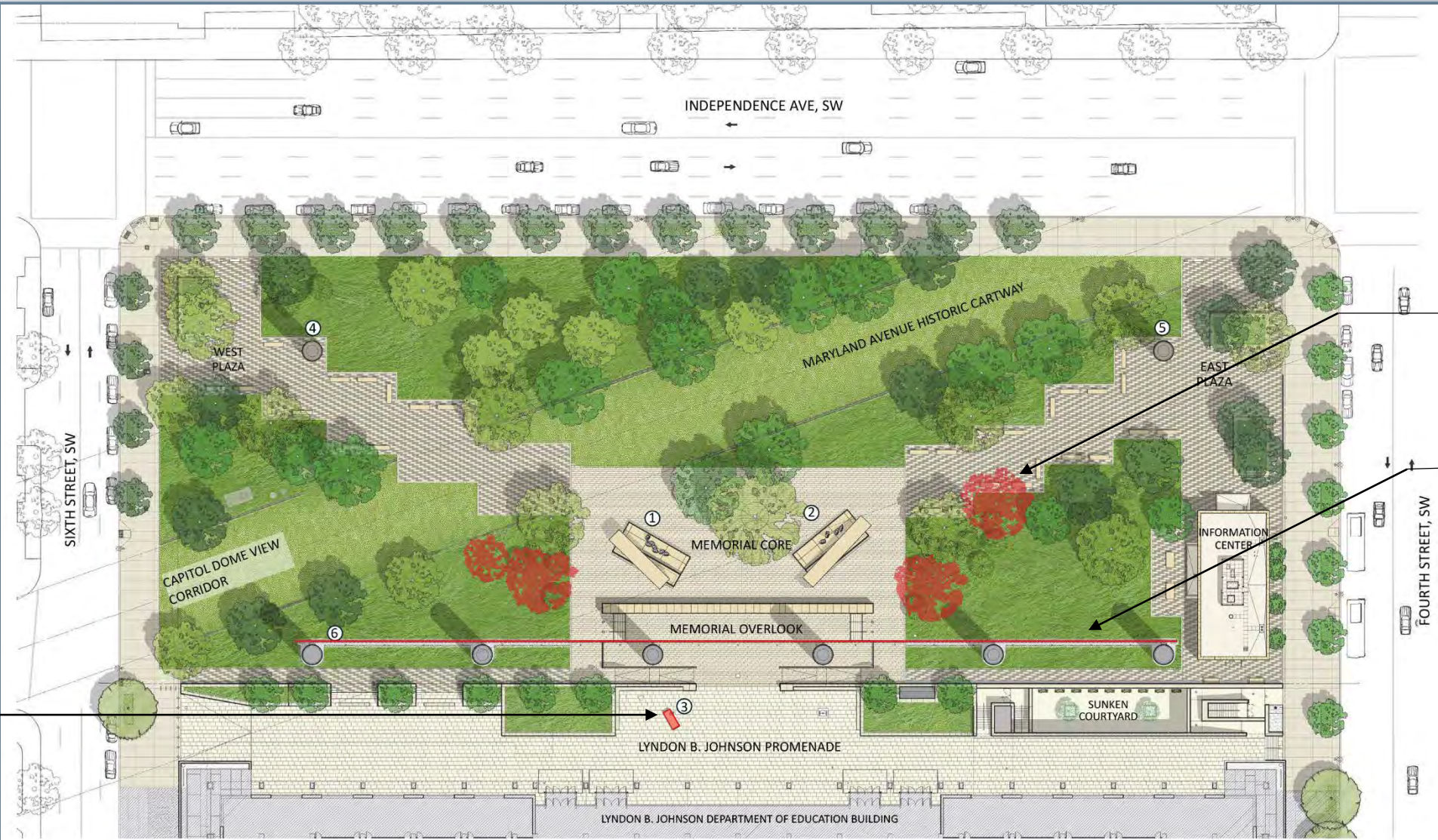


- ① GENERAL EISENHOWER MEMORIAL ELEMENT
- ② PRESIDENT EISENHOWER MEMORIAL ELEMENT
- ③ YOUNG EISENHOWER STATUE
- ④ GENERAL EISENHOWER COLUMN
- ⑤ PRESIDENT EISENHOWER COLUMN
- ⑥ SOUTH TAPESTRY

0' 5' 10' 20' 30'  
SITE PLAN

SITE PLAN





Four Trees  
Removed

Revised  
Tapestry Art

Young Eisenhower  
Sculpture

- ① GENERAL EISENHOWER MEMORIAL ELEMENT
- ② PRESIDENT EISENHOWER MEMORIAL ELEMENT
- ③ YOUNG EISENHOWER STATUE
- ④ GENERAL EISENHOWER COLUMN
- ⑤ PRESIDENT EISENHOWER COLUMN
- ⑥ SOUTH TAPESTRY



# 1. Tapestry

---





July 2015 – Final Plan showing a landscape scene of Abilene, Kansas



Current Design showing a contemporary aerial view of Normandy, France



447'

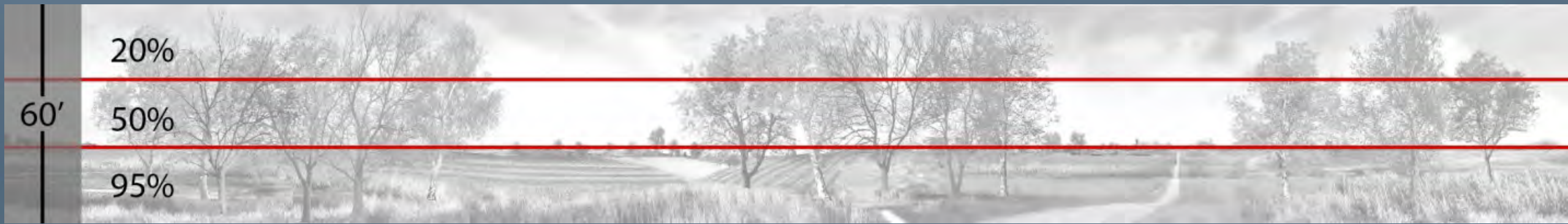
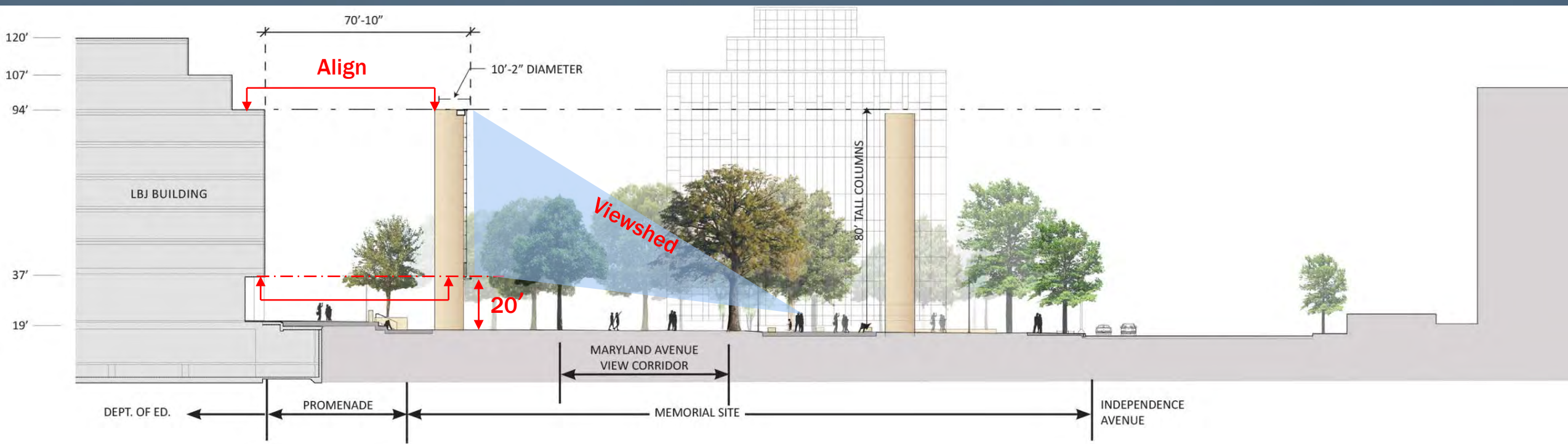
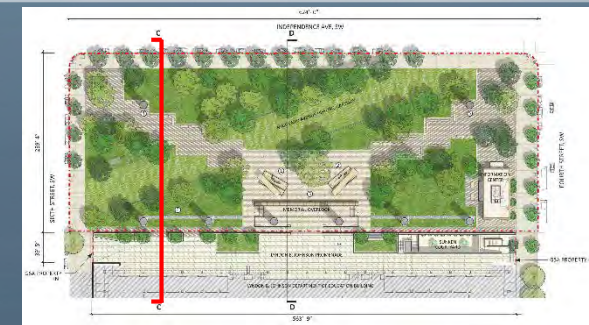


Diagram of south tapestry showing estimated image densities (in percent solid) / October 2014 – Preliminary Plan



Current Design





Section Looking West













View of Memorial Core and Tapestry from Maryland Avenue





View of Memorial Core and Tapestry from Maryland Avenue





Tapestry Mock-up Viewed From LBJ Building



Tapestry Mock-up Viewed Against The LBJ Building



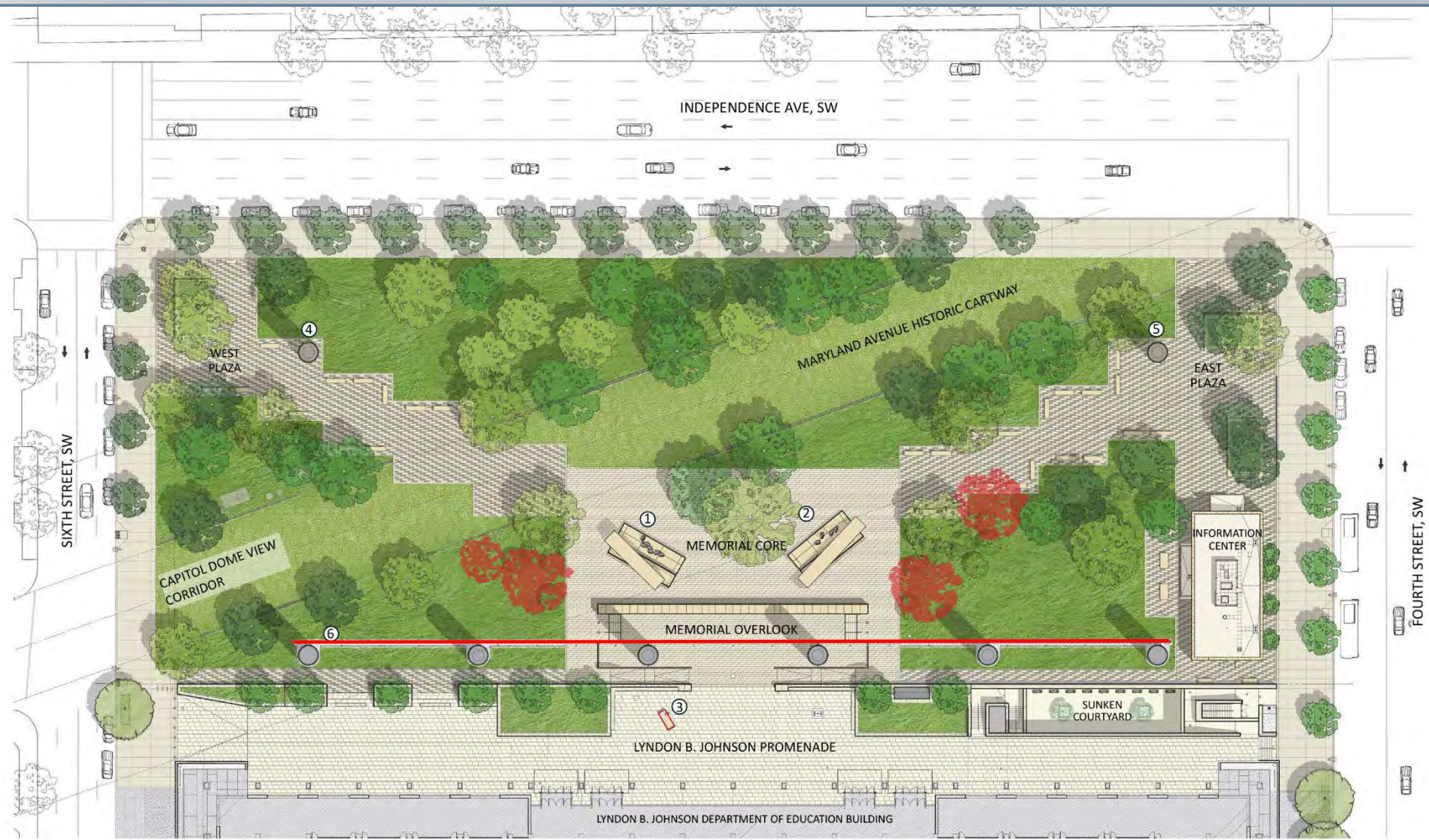
Tapestry Mock-up Illuminated at Night



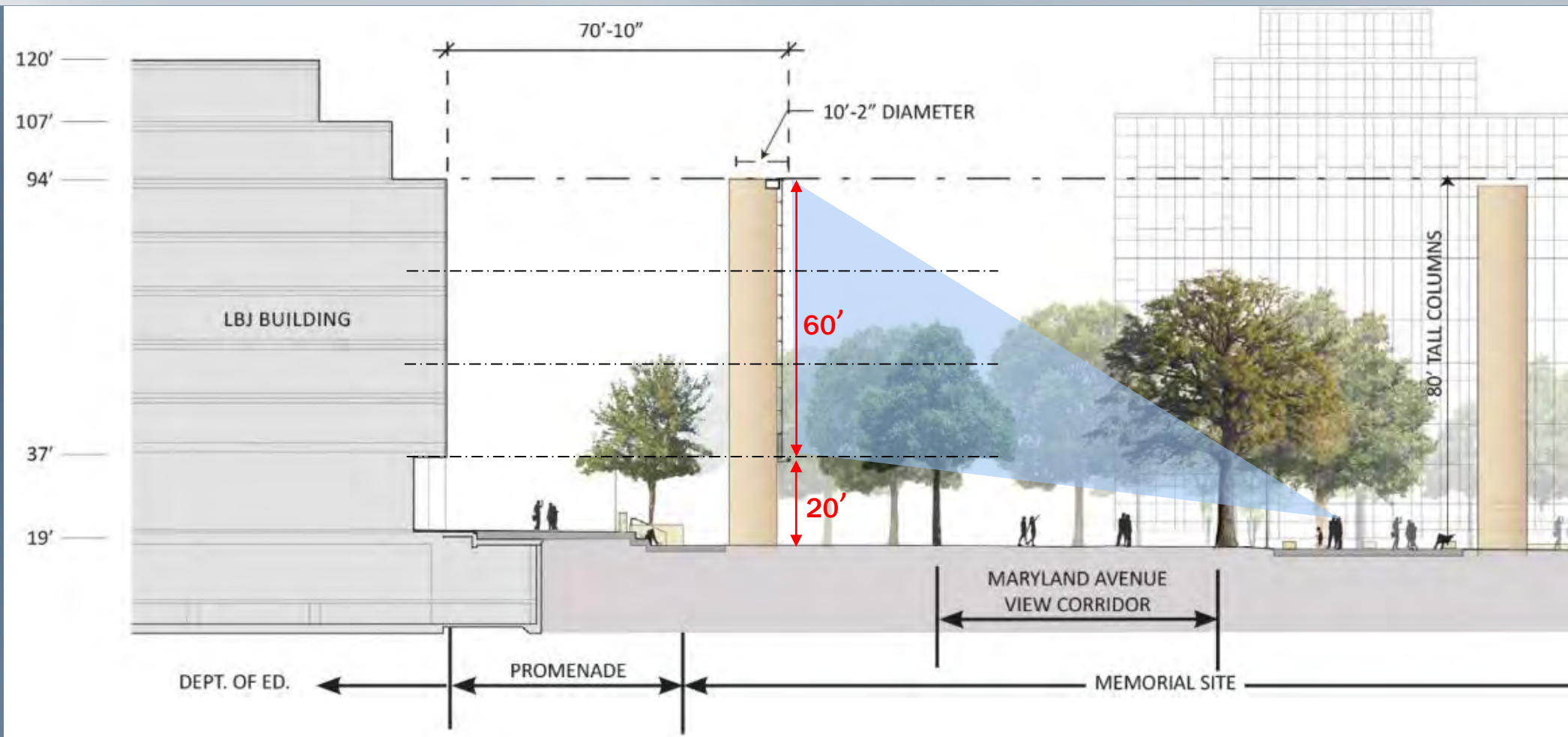
## 2. Landscape

---

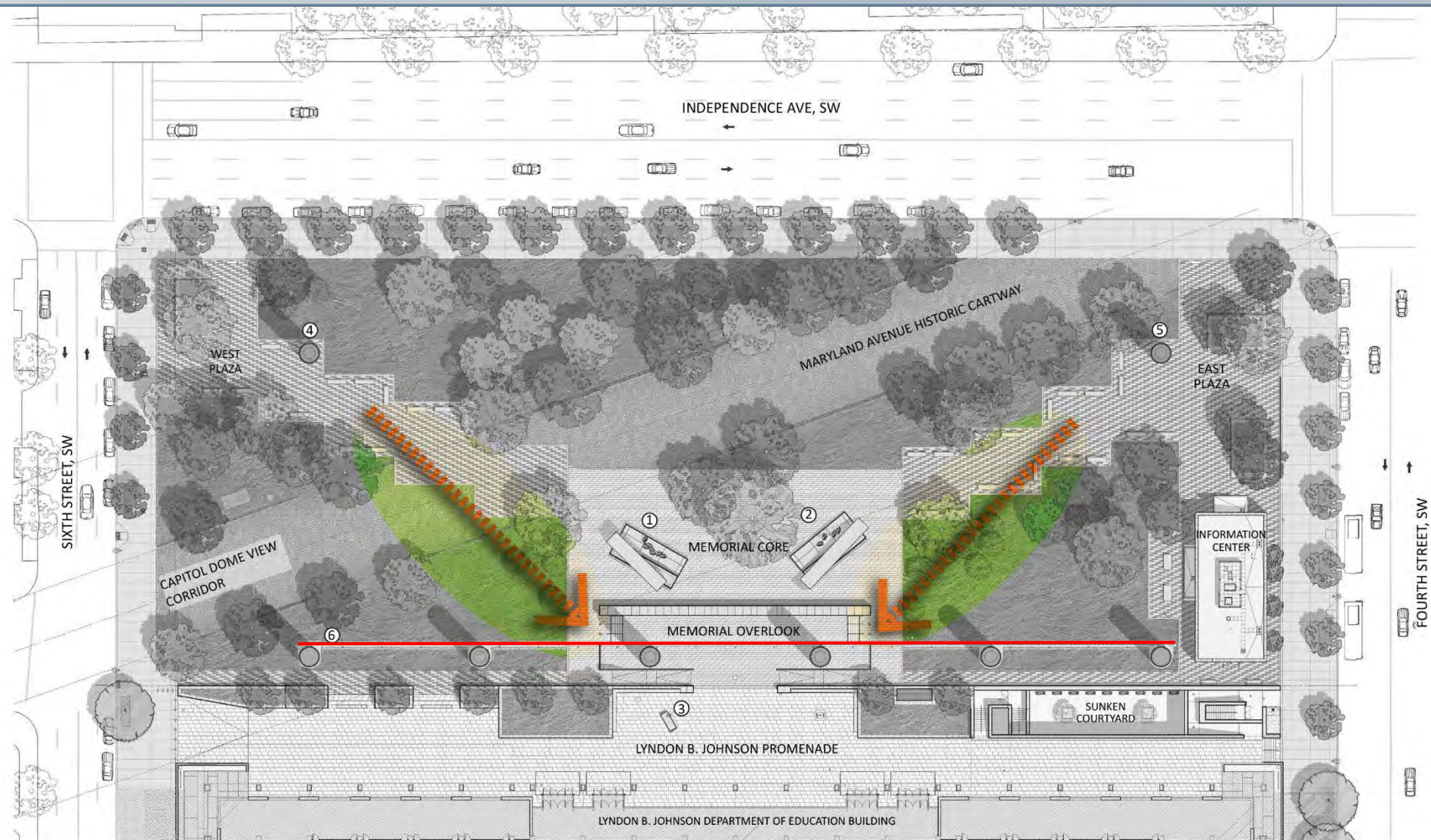






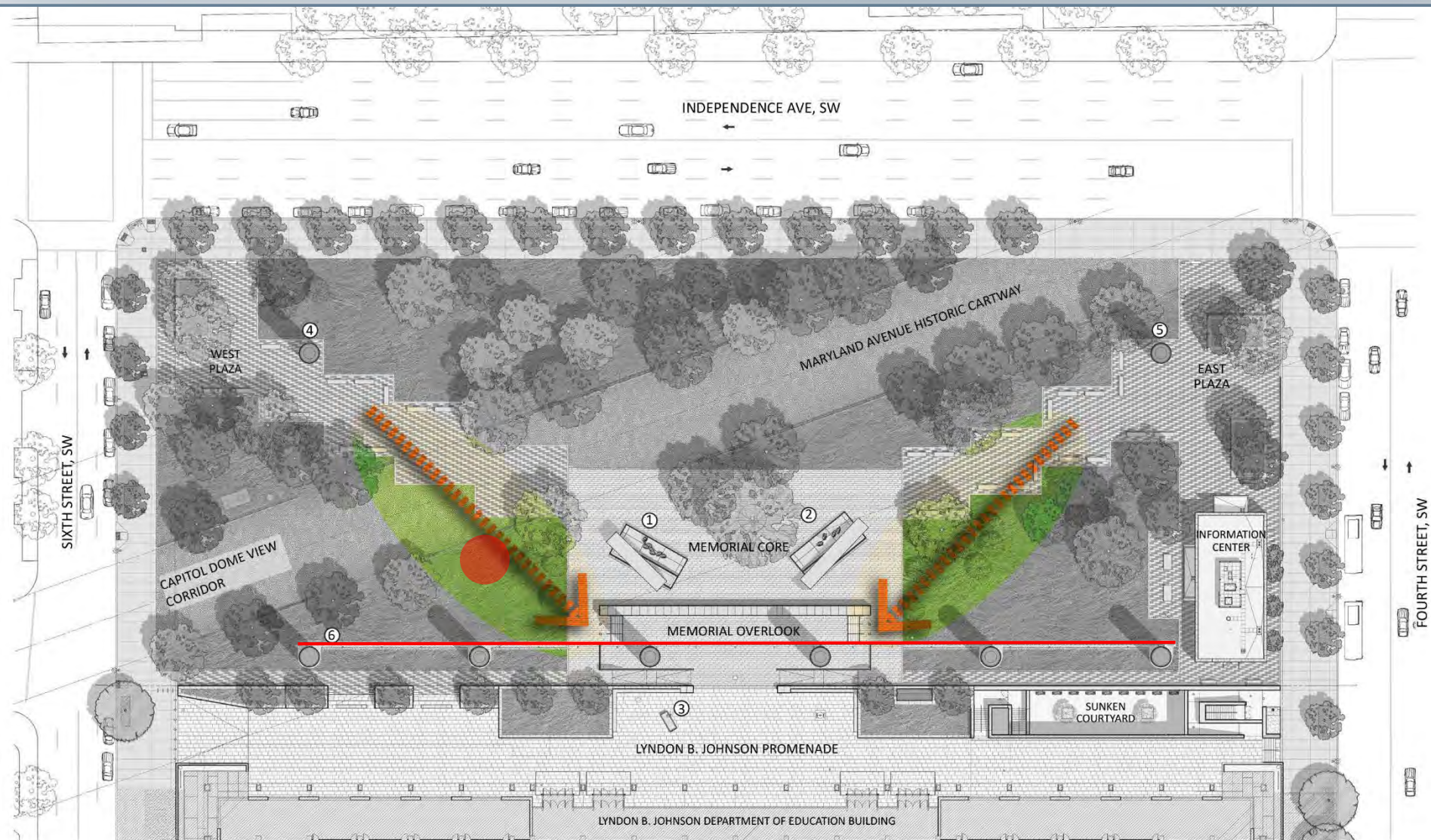






- ① GENERAL EISENHOWER MEMORIAL ELEMENT
- ② PRESIDENT EISENHOWER MEMORIAL ELEMENT
- ③ YOUNG EISENHOWER STATUE
- ④ GENERAL EISENHOWER COLUMN
- ⑤ PRESIDENT EISENHOWER COLUMN
- ⑥ SOUTH TAPESTRY





- ① GENERAL EISENHOWER MEMORIAL ELEMENT
- ② PRESIDENT EISENHOWER MEMORIAL ELEMENT
- ③ YOUNG EISENHOWER STATUE
- ④ GENERAL EISENHOWER COLUMN
- ⑤ PRESIDENT EISENHOWER COLUMN
- ⑥ SOUTH TAPESTRY

0 5 10 25 50  
SITE PLAN



### 3. Memorial Core - Young Eisenhower Statue

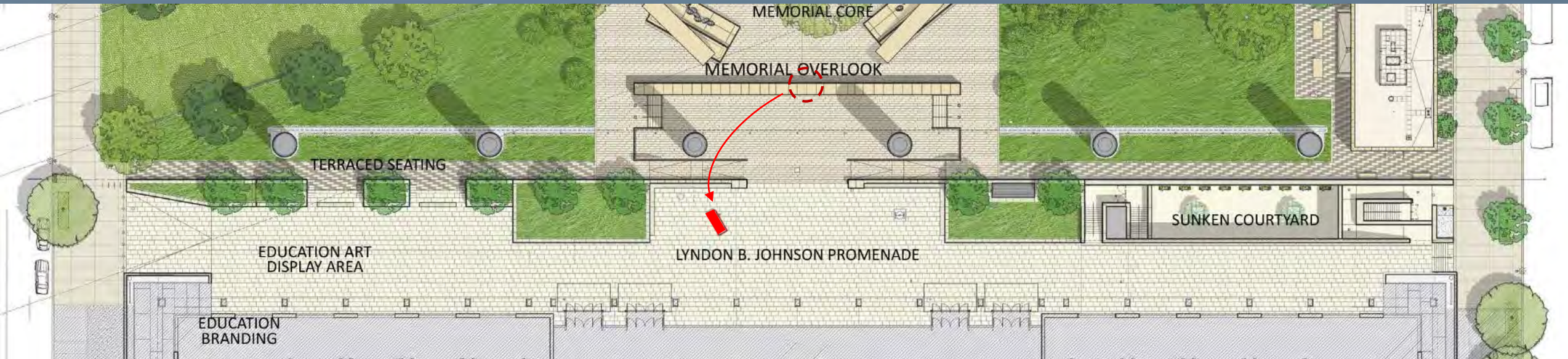
---





View of Memorial Core and Tapestry from Maryland Avenue

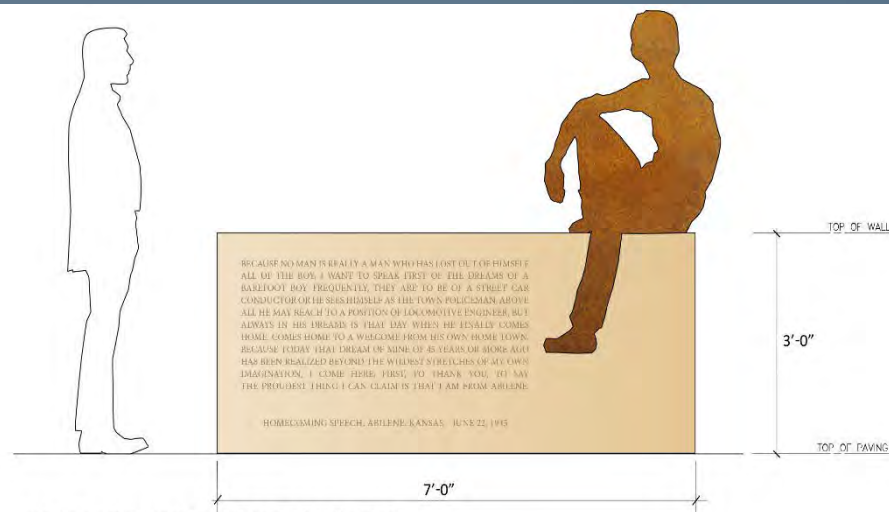








SECTION A THROUGH LYNDON B. JOHNSON PROMENADE



YOUNG EISENHOWER INSCRIPTION WALL ELEVATION









The Commission:

**Comments favorably** on the revised concept design for the Dwight D. Eisenhower Memorial.

**Finds** that the overall placement, scale and assembly of the primary memorial elements have not significantly changed since final approval, including the stainless steel tapestry and supporting colonnade, freestanding columns, memorial core, landscaping, and information center.

**Finds** that the revised memorial design concept continues to satisfy the site selection design principles adopted by the Commission in September 2006.

**Requests** additional visual studies and a mock-up of the revised tapestry that address any impacts to the Lyndon B. Johnson Department of Education Headquarters including views of the building through the tapestry, the memorial itself, and surrounding context.

**Requests** a revised lighting plan consistent with the overall lighting design for the memorial that considers the relocated young Eisenhower sculpture and its associated inscription wall.

**Requests** that the applicant conduct additional Section 106 consultation to ensure that the proposed design changes will not result in new or intensified adverse effects to historic properties.