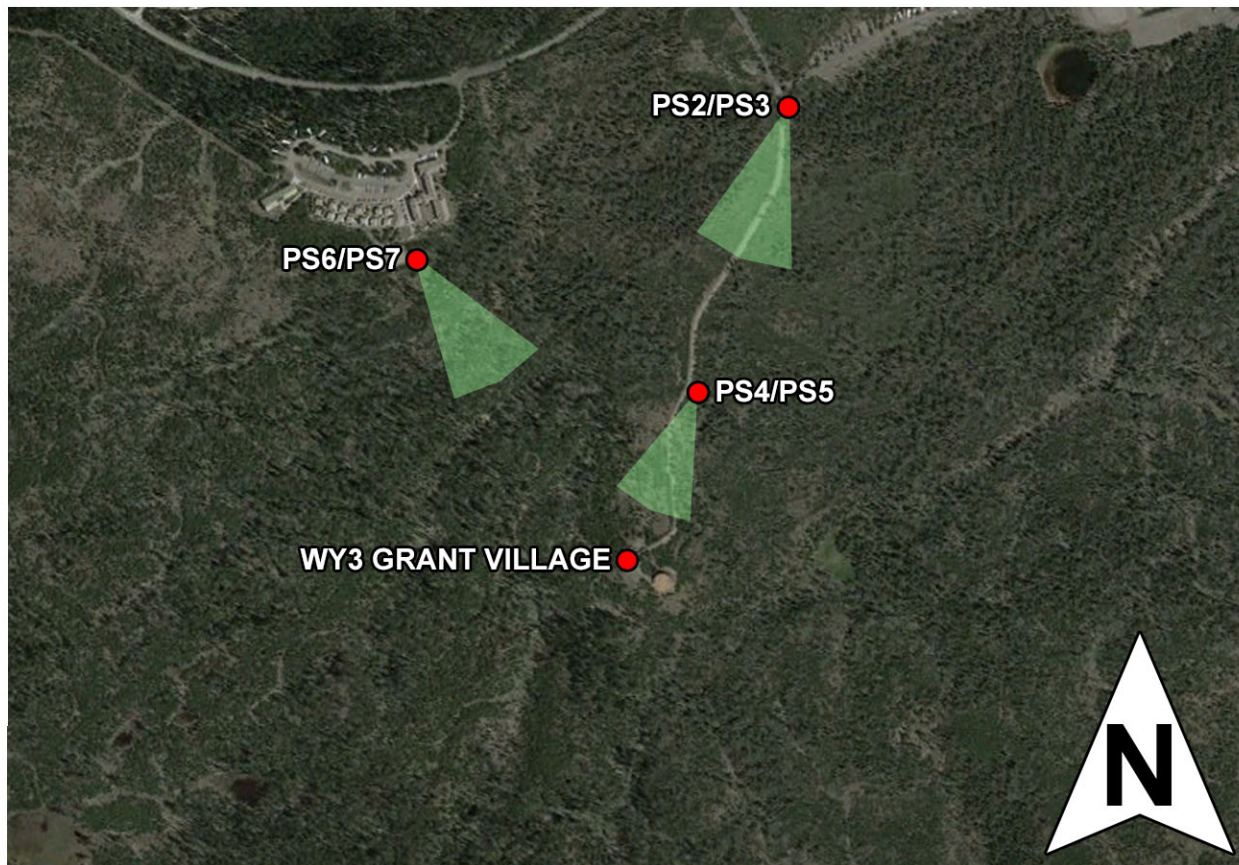




WY3 GRANT VILAGE

PHOTO SIMULATION
NOVEMBER 20, 2014



SITE ADDRESS:

YELLOWSTONE NATIONAL PARK
GRANT VILLAGE, WYOMING
TETON COUNTY

COORDINATES:

LAT: 44°22'51.4"N
LONG: 110°32'46.8"W

CONTENTS:

PS1: COVER
PS2: EXISTING NORTHEAST ELEVATION
PS3: NORTHEAST ELEVATION SIMULATION
PS4: EXISTING NORTHEAST ELEVATION
PS5: NORTHEAST ELEVATION SIMULATION
PS6: EXISTING NORTHWEST ELEVATION
PS7: NORTHWEST ELEVATION SIMULATION



TOWERCOM TECHNOLOGIES, LLC

767 N. Star Road Star, ID 83669 (208) 286-0266

Albuquerque, NM • Boise, ID • El Paso, TX • Las Vegas, NV • Denver, CO



WY3 GRANT VILLAGE
SITE PHOTO
EXISTING NORTHEAST ELEVATION
NOVEMBER 20, 2014



NEW VERIZON
WIRELESS
MICROWAVE
ANTENNA



verizonwireless

WY3 GRANT VILLAGE
SITE PHOTO
NORTHEAST ELEVATION SIMULATION
NOVEMBER 20, 2014



The Verizon Wireless logo is positioned in the bottom left corner. It features a red checkmark-like symbol above the word "verizon" in a bold, sans-serif font, with "wireless" in a smaller, lighter font to its right.

verizonwireless

WY3 GRANT VILLAGE
SITE PHOTO
EXISTING NORTHEAST ELEVATION
NOVEMBER 20, 2014



NEW VERIZON WIRELESS
MICROWAVE ANTENNA

The Verizon Wireless logo, featuring the word "verizon" in white lowercase letters with a red checkmark above the "v", followed by "wireless" in a smaller, black, sans-serif font.

WY3 GRANT VILLAGE
SITE PHOTO
NORTHEAST ELEVATION SIMULATION
NOVEMBER 20, 2014





WY3 GRANT VILLAGE
SITE PHOTO
EXISTING NORTHWEST ELEVATION
NOVEMBER 20, 2014



*PROPOSED VERIZON
WIRELESS MICROWAVE
ANTENNA NOT VISIBLE
ON EXISTING MONOPOLE



verizonwireless

WY3 GRANT VILLAGE
SITE PHOTO
NORTHWEST ELEVATION SIMULATION
NOVEMBER 20, 2014

