

PHOTO SIMULATIONS FOR WY1 CANYON VILLAGE

Prepared For:

VERIZON WIRELESS
2730 Bozeman Avenue
Helena, MT 59601

December 14, 2016



Prepared by:

Adams & Clark, Inc.

1720 W. Fourth Avenue
Spokane, WA 99201

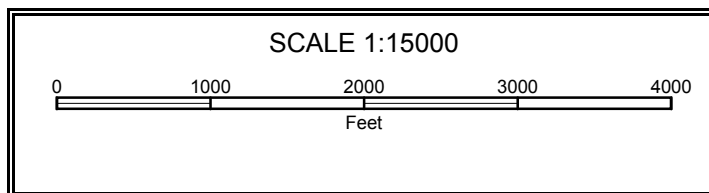
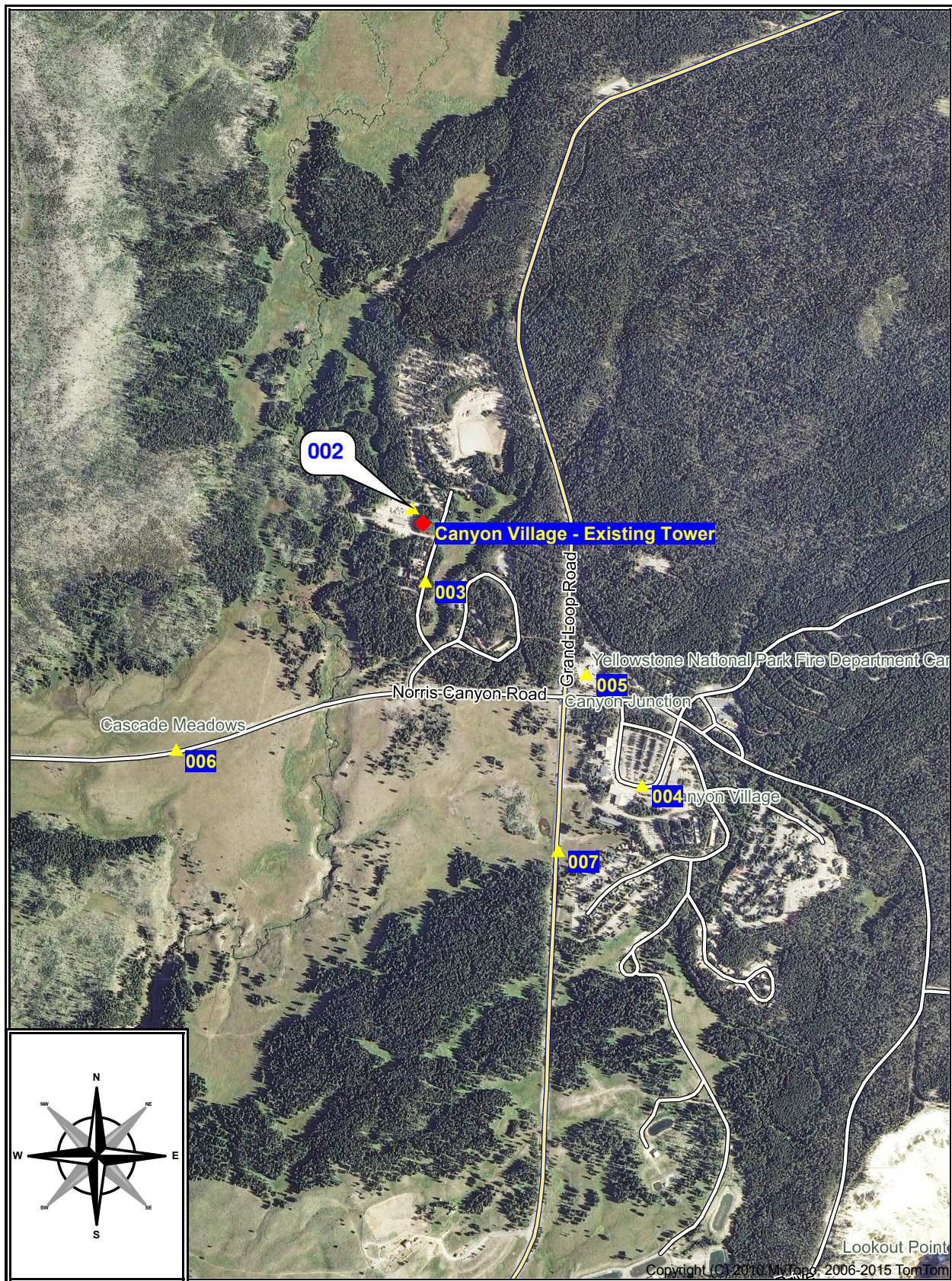
(509)747-4600 Fax (509)747-8913
A&C Project No. 2015-01-028

PROJECT DESCRIPTION

The existing communication site with 70' lattice tower is located in Yellowstone National Park near the maintenance shop of Canyon Village. This existing 70' lattice tower is owned by CenturyTel. Verizon Wireless proposes to construct a new 90' monopine tower just to the east of the existing lattice tower.

METHODOLOGY

On December 02, 2015, Bret De Young of the National Park Service and two members of their Historic Preservation Office accompanied me to determine where these pictures were taken. In order to find the tower from the different viewpoints, a 20' red and white rod topped with a red flag was attached to the top of the existing 70' lattice tower. These photo simulations are intended to show how the 90' monopine tower will look from the historic districts identified on the enclosed map furnished by the National Park Service.



EXISTING

NEW 90' MONOPINE TOWER
WITH VERIZON WIRELESS
ANTENNAS

WY1 CANYON VILLAGE

NORTHWEST ELEVATION
FROM
POINT 002 WITH 55mm
LENS

PROPOSED



EXISTING

NEW 90' MONOPINE TOWER
WITH VERIZON WIRELESS
ANTENNAS



WY1 CANYON VILLAGE

SOUTH ELEVATION FROM
POINT 003 WITH 55mm
LENS

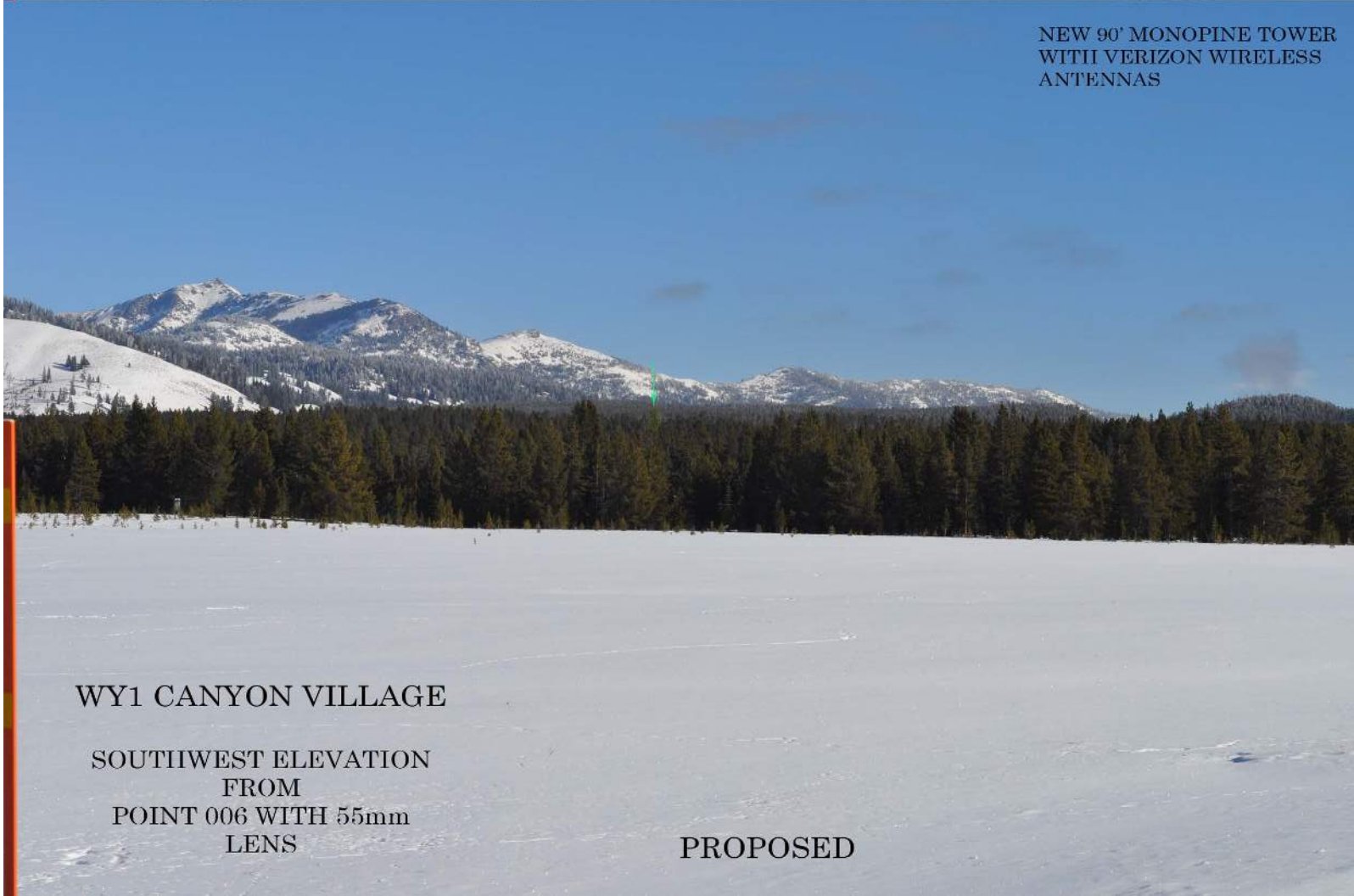
PROPOSED





EXISTING

NEW 90' MONOPINE TOWER
WITH VERIZON WIRELESS
ANTENNAS



WY1 CANYON VILLAGE

SOUTHWEST ELEVATION
FROM
POINT 006 WITH 55mm
LENS

PROPOSED



EXISTING

NEW 90' MONOPINE TOWER
WITH VERIZON WIRELESS
ANTENNAS

WY1 CANYON VILLAGE
SOUTHWEST ELEVATION
FROM
POINT 006 WITH 300mm LENS

PROPOSED



EXISTING

NEW 90' MONOPINE TOWER
WITH VERIZON WIRELESS
ANTENNAS



WY1 CANYON VILLAGE

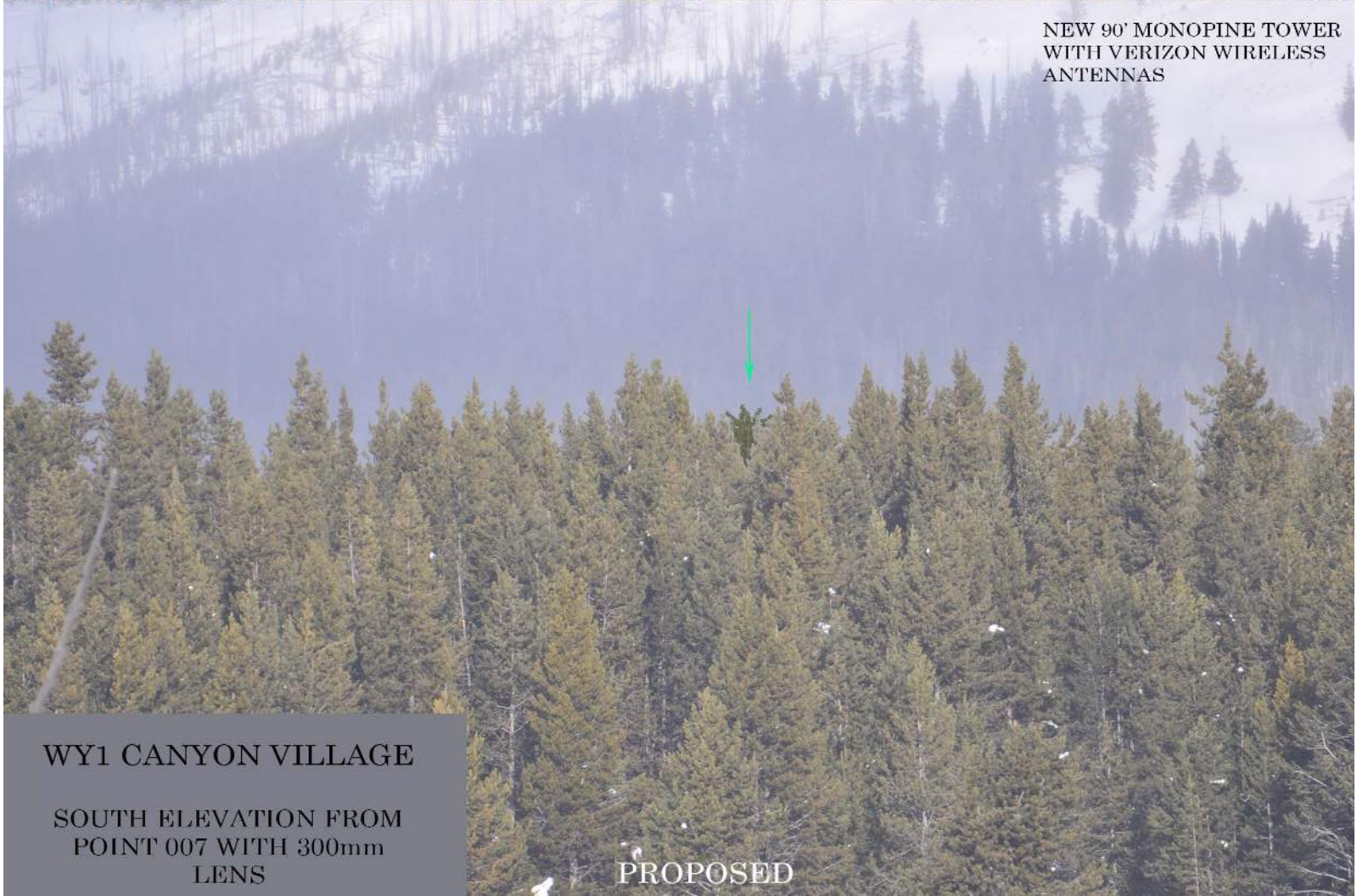
SOUTH ELEVATION FROM
POINT 007 WITH 55mm
LENS

PROPOSED



EXISTING

NEW 90' MONOPINE TOWER
WITH VERIZON WIRELESS
ANTENNAS



WY1 CANYON VILLAGE

SOUTH ELEVATION FROM
POINT 007 WITH 300mm
LENS

PROPOSED