



NPS Seeks Comments on Platte River Area Targeted Accessibility Improvement Project

Project Description and Background

The National Park Service (NPS), at Sleeping Bear Dunes National Lakeshore (Lakeshore), plans to expand accessibility at key points within the Platte River corridor. The project will provide a universal experience for their facilities at the Loon Lake access, Platte River Campground, Platte River Picnic Area and canoe/kayak launch, and Platte Point. Improvements will also occur at the Philip A. Hart Visitor Center in Empire. This project, part of the Targeted Accessibility Improvement Program (TAIP); has a unique opportunity to provide expanded accessibility for all people to experience the Lakeshore though kayaking, canoeing, tubing, swimming, fishing, picnicking and camping.

Physical improvements include accessible oversized parking stalls, accessible routes to activity areas, restrooms, campground facilities such as pay stations, water spigots and fire rings, accessible kayaks/canoe launch and pullout, and fishing and fish cleaning. Programmatic improvements include improving or replacing interpretive media to provide information about recreational experiences so that visitors with disabilities and their companions can prepare for and engage in the activities. Universally designed interpretive media will include indoor and outdoor exhibits and orientation signs that incorporate audio, tactile and written communication methods.

In 2015 an interdisciplinary planning team began the process of conceptualizing how to improve recreational opportunities for all visitors at the Platte River area. The team researched and eventually developed the preliminary accessibility improvements provided in this newsletter. The planning team weighed multiple topics into the improvements including current and past site conditions, current and projected future visitor use, preliminary wetland assessments, protected species information, and jurisdictional considerations. The Lakeshore is requesting your input regarding these preliminary improvements to assist with project development.

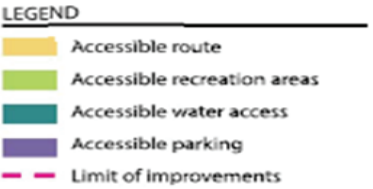
Targeted Accessibility Improvement Project Locations



Preliminary Platte Point Improvements

Interpretive Plaza with River Access – An accessible car parking space will be installed adjacent to an accessible family restroom. These facilities will be connected by accessible walk to a new interpretive plaza with educational exhibits designed to accommodate 30 children and four adults or 20 adults. An accessible walkway will be routed past the new interpretive plaza to provide access to the Platte River.

Pay Station - Van accessible parking stall providing access to pay station and site orientation kiosk.

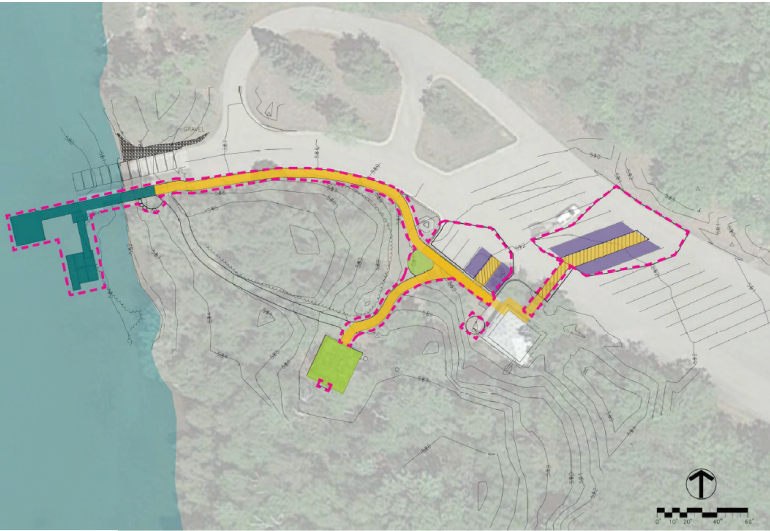


Philip A. Hart Visitor Center - Two accessible orientation kiosks will be added to the front of the building near the entrance to the visitor center (image not provided).



Preliminary Platte River Picnic Area and Canoe/Kayak Launch Improvements

Accessible routes will be constructed to provide interconnectivity between facilities, each of which will receive accessibility improvements. These facilities include walkways, parking spaces, restrooms, two water spigots, an interpretive/wayfinding information shelter, three individual picnic tables with grills, a fish cleaning station, and a picnic shelter with three accessible picnic tables and grills. The designated canoe/kayak drop-off and ramp to the river will be modified to provide an accessible route from the drop-off to the river. Water access features will include an accessible canoe/kayak launch and ramped entry into the river. Stairs are incorporated into the water access facility to accommodate its use as a watercraft launch point.



Preliminary Loon Lake Improvements

Construct two accessible parking spaces adjacent to existing restrooms and two Recreational Vehicle (RV) spaces. All accessible parking spaces will be provided with an accessible route to new accessible walkways that connect to recreation facilities including restrooms, a picnic area, boat launch, and new orientation kiosk and fixed fishing pier. The fixed pier will provide fishing opportunities and gangway will provide access to a floating dock with an integrated accessible canoe/kayak launch.

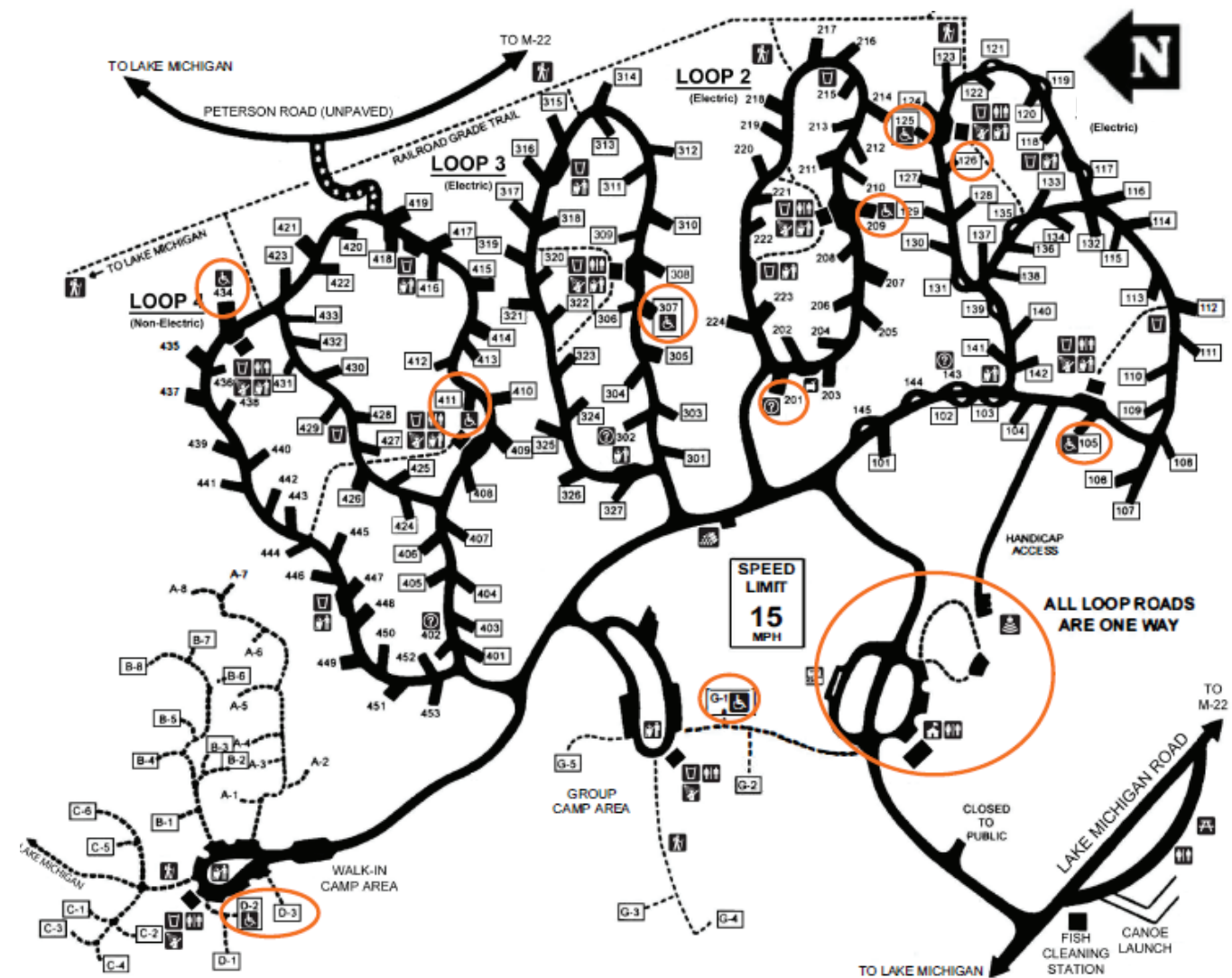
Sleeping Bear Dunes National Lakeshore

Platte Point Targeted Accessibility Improvement Pro

National Park Service
U.S. Department of the Interior

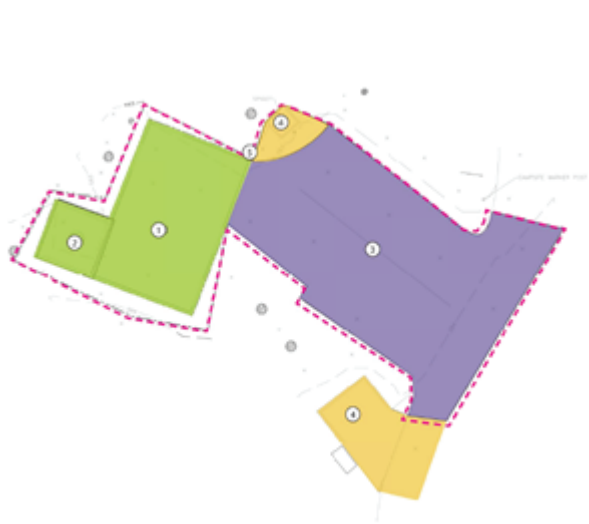


December 2016



Preliminary Platte River Campground Improvements

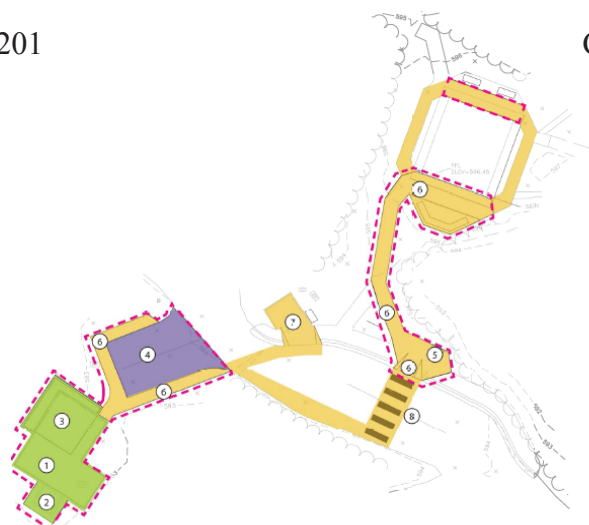
Accessibility improvements will be provided at eight existing accessible campsites and three non-accessible sites will be converted into fully accessible campsites. The project will result in a total of 11 fully accessible campsites including one host campsite, seven drive-up and two walk-in campsites, and one group campsite. Many of the campsites will have access to restrooms, showers, and trash/recycling facilities. Other campground facilities with improved accessibility include the campground amphitheater, ranger station, and sanitary dump station. New indoor and outdoor exhibits at the campground office will provide orientatin to the park and area.



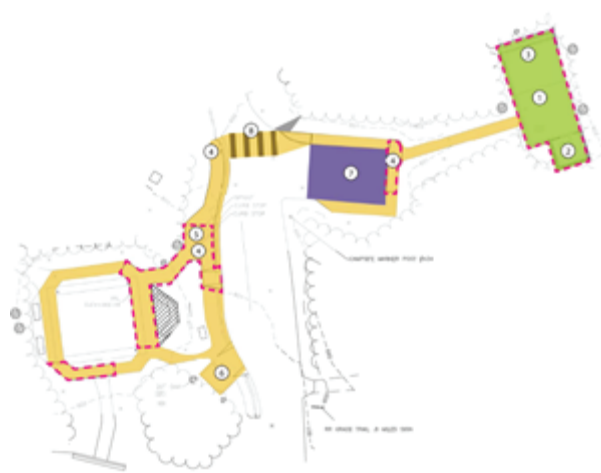
Campground Site 201



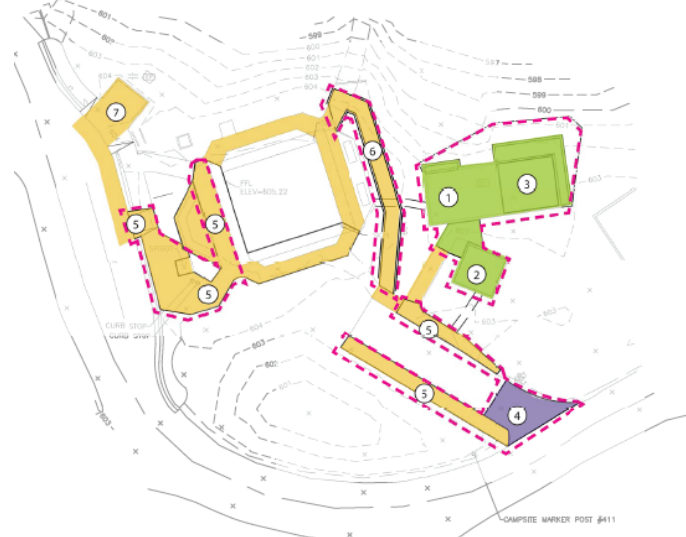
Campground Site 209 and Adjacent Restroom



Campground Site 307 and Adjacent Restroom



Campground Site 434 and Adjacent Restroom



Campground Site 411 and Adjacent Restroom

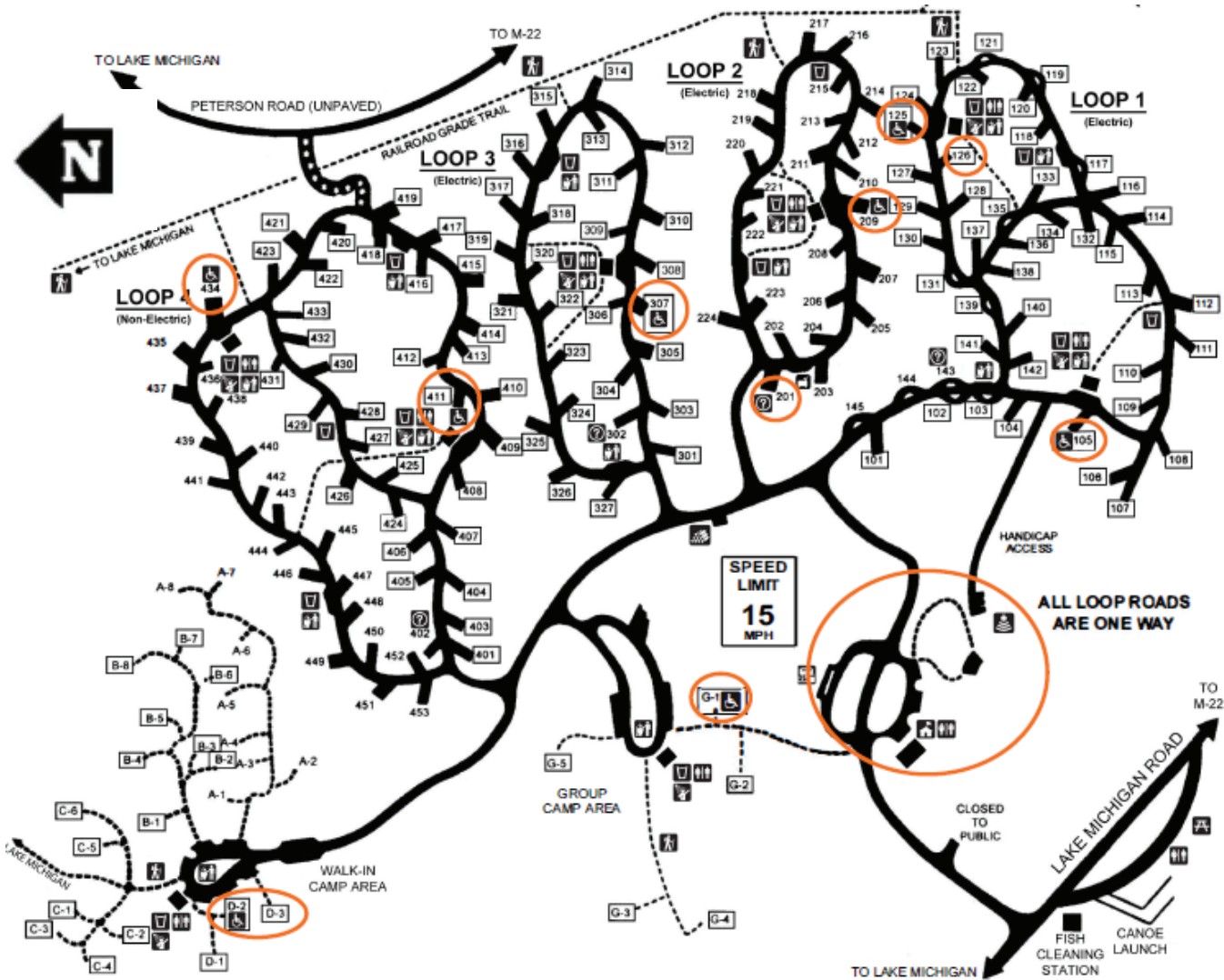
Sleeping Bear Dunes National Lakeshore

Platte Point Targeted Accessibility Improvement Pro

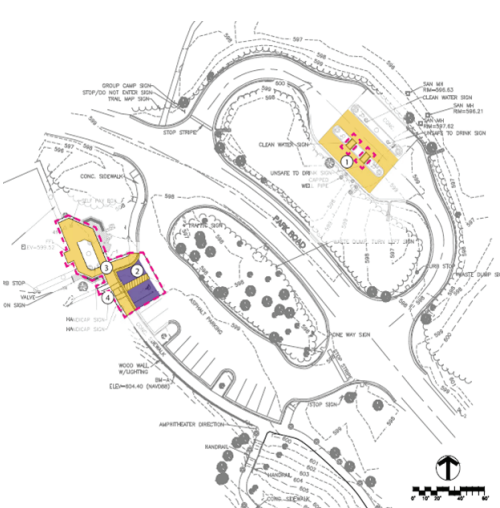
National Park Service
U.S. Department of the Interior



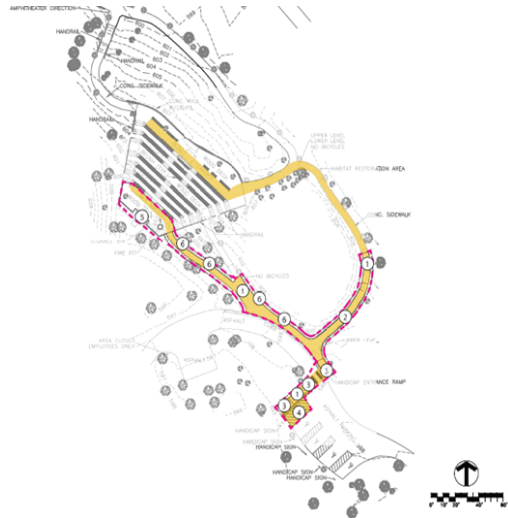
December 2016



Preliminary Platte River Campground Improvements



Ranger Station ADA Parking and Dump Station



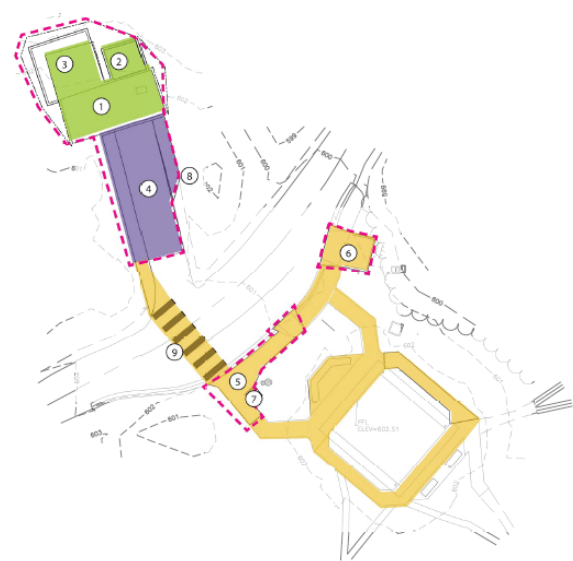
Amphitheater Improvements



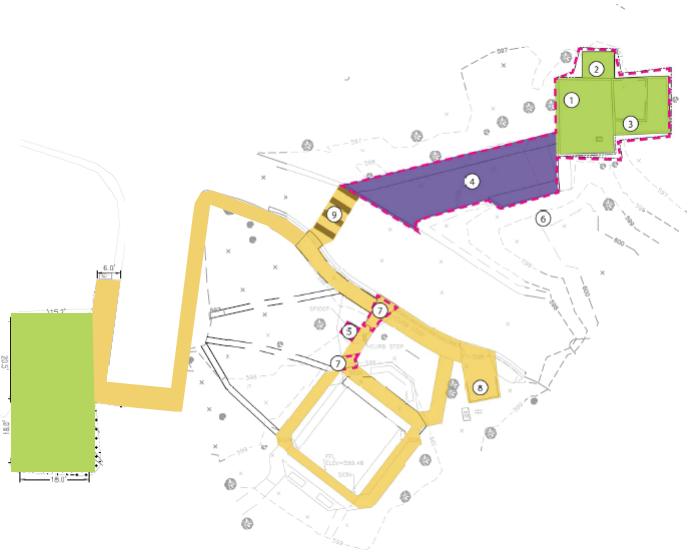
Campsite D-2 and 3 and Adjacent Restroom



Campsite G-1 and Adjacent Restroom



Campsite 105 and Adjacent Restroom



Campsite 125/126 and Adjacent Restroom

- LEGEND**
- AMPHITHEATER
 - BICYCLE ACCESS TO PETERSON
 - CAMPGROUND HOST
 - DRINKING WATER
 - FIREWOOD SALES
 - HANDICAPPED SITE
 - PICNIC AREA
 - RANGER STATION
 - RESTROOMS
 - SANITARY DUMP
 - SHOWERS
 - TRAIL
 - TRASH DISPOSAL
 - RESERVABLE SITE

- LEGEND**
- Accessible route
 - Accessible parking
 - Limit of improvements
 - Limit of improvements