

Kīpahulu Comprehensive Plan

Haleakalā National Park, Hawaii
Fall 2016

National Park Service
U.S. Department of the Interior

Haleakalā National Park
Hawaii



Kīpahulu coastline

Message from the Superintendent

Aloha kakou,

Haleakalā National Park is developing a comprehensive plan for the lands under National Park Service management in the Kīpahulu District. The purpose of the Kīpahulu Comprehensive Plan (the plan) is to balance recreational access and visitor facilities with protection of the park's important natural and cultural resources. The National Park Service originally initiated this project in 2010 and developed preliminary sets of management strategies and actions. These potential strategies were shared with the public for input in 2012, but the plan was put on hold until recently. The park is now committed to focusing on the Lower Kīpahulu Valley, building on previous public input and incorporating new information and emerging issues that have been identified since 2012. The renewed planning process will examine current and new visitor opportunities and will outline long-term management strategies.

An integral part of the planning process is getting your input on key issues that should be considered while developing the plan. Your feedback will help us identify management strategies that meet visitor needs while also achieving our mission to preserve and protect resources. We also want to meet our responsibility to be a good neighbor in southeast Maui. In August 2016, the park held a series of public listening and focus group sessions to learn about key stakeholder concerns and share information on the upcoming planning process. Your comments will help us build upon

these ideas and guide the planning team in developing management strategies and alternatives. We are accepting public comments from November 10, 2016, through December 15, 2016. You can find more information, submit comments, and get project updates at the project's website: (<http://www.parkplanning.nps.gov/KCP>).

As we explore different ways to manage the park for the future, I encourage you to stay connected and be an active participant in this important planning process. This comment period will not be your last opportunity to have a say in the process. In the following newsletter, you will find a number of ways to contact us and get information. Next year, the park will host several public meetings where you can learn about, discuss, and comment on the draft plan. In addition to the public meetings, presentations and other materials will be posted online at the park planning website: (<http://www.parkplanning.nps.gov/KCP>).

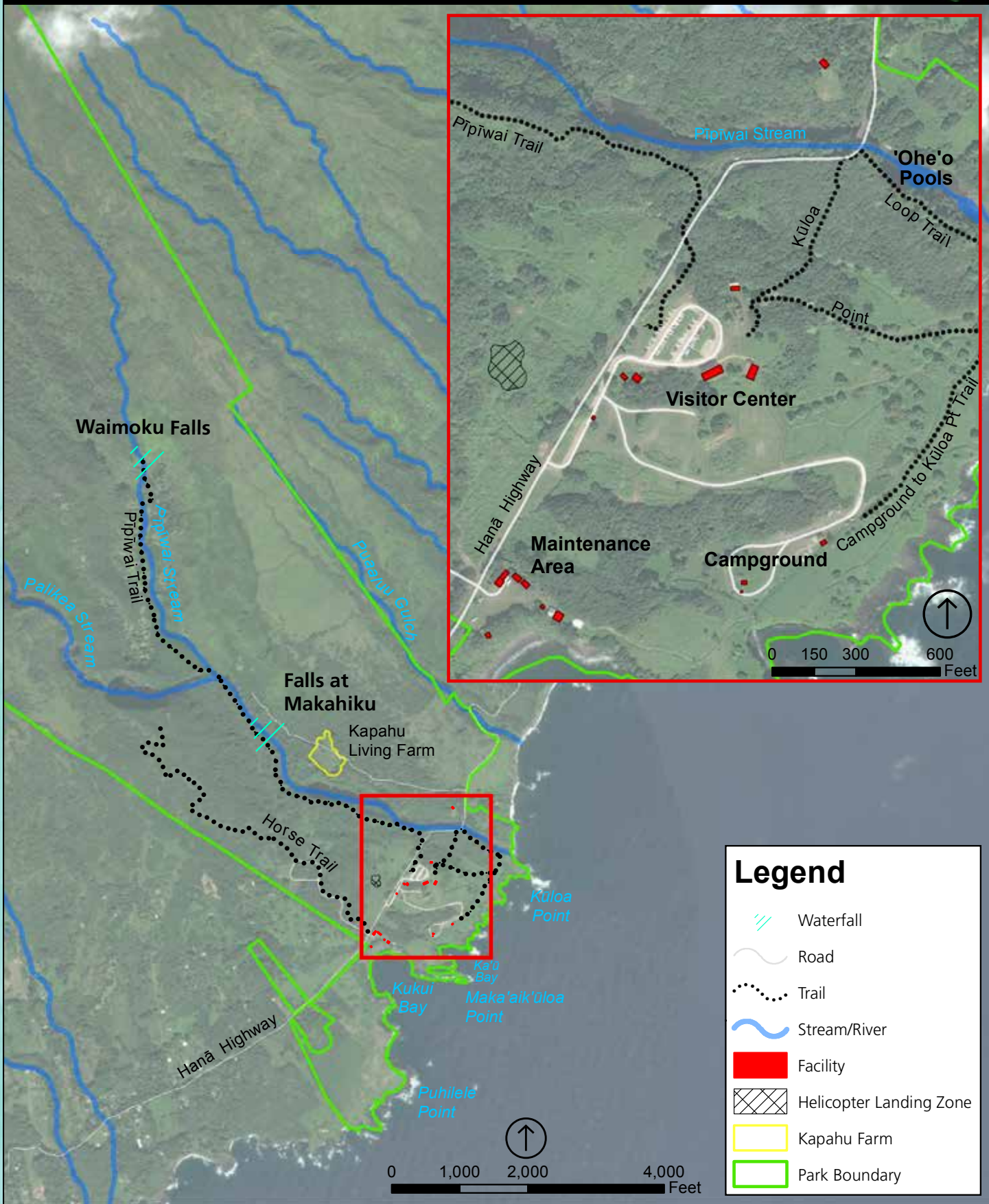
Mahalo in advance for your interest and participation in the Kīpahulu Comprehensive Plan. We look forward to hearing from you!

Sincerely,

A handwritten signature in dark ink, appearing to read "Natalie B. Gates".

Natalie B. Gates
Superintendent





November 2016



Makahiku Falls Overlook



Pipīwai Trail steps



Pipīwai Trail Overlook

Why is a Comprehensive Plan for the Kīpahulu District Needed?

Nearly 800,000 visitors a year travel the long and winding road to southeast Maui to visit Kīpahulu, which is the location of two of Haleakalā National Park's primary attractions, the 'Ohe'o pools and the Pipīwai Trail. This area has become a popular destination for visitors to Maui and is heavily marketed by the local tourism industry. During peak times, the Lower Kīpahulu Valley receives over 500 cars and about 1,500 to 1,800 people per day, an extraordinary amount of visitor

traffic for a remote location with limited public access and infrastructure in place. The large volume of visitors is impacting natural and cultural resources, while off-road parking and crowding is creating staff and visitor safety concerns. The existing trails system cannot accommodate the volume of visitor use, and many social trails are being created, adversely impacting vegetation, soils, and cultural sites.



Kanalulu House



'Ohe'o Gulch



Overflow parking



Social trail impacting vegetation



Pipīwai Trail wayside sign



Pīpīwaī Trail exposed roots

Kīpahulu Comprehensive Plan, Purpose and Need



Pīpīwaī Trail boardwalk

Project Purpose: The purpose of the Kīpahulu Comprehensive Plan is to provide park management with direction on protecting natural and cultural resources, while providing valuable visitor experiences, maintaining efficient park operations, and creating partnerships.

Project Need: A comprehensive plan is needed to:

Establish a vision for the Lower Kīpahulu Valley area of the Kīpahulu District:

- Ensure resource protection
- Determine the appropriate level of development and ensure accessibility requirements are met
- Guide site design and development character considerations
- Resolve staff housing issues
- Encourage partnerships with community groups, schools, and non-profit organizations

Provide direction for visitor use management:

- Improve the campground to meet visitor needs
- Develop indicators and thresholds and determine visitor capacity
- Inform trail design and maintenance efforts
- Enhance the quality and diversity of visitor experiences
- Address visitor and staff health and safety concerns

Promote cultural values, features, and interpretation:

- Establish areas where visitors can learn about Hawaiian cultural practices
- Expand interpretation of Hawaiian cultural and ethnographic resources
- Manage the Kapahu Living Farm area
- Encourage Native Hawaiian use for traditional cultural practice



Wayside at Kūloa loop



Kapahu Living Farm

Public Scoping Questions

In 2012, individuals and groups submitted comments related to preliminary management alternatives developed by the NPS planning team before the previous Kīpahulu plan was put on hold. Many of these comments presented new ideas promoting the conservation and preservation of resources and favored reasonable, usable design for any additional visitor use development in the Lower Kīpahulu Valley. As this project moves forward and considers previous public input, the team would like to hear from the public again through the following questions focused on the current project's purpose and need.

- What do you want us to know about the Lower Kīpahulu Valley? What should this comprehensive plan consider or be sure to include?
- What kinds of experiences do you want to have at Kīpahulu? What do you think would need to be done to facilitate those experiences?
- What concerns do you have related to this plan or future management of the Lower Kīpahulu Valley?



Kīpahulu aerial view



Kīpahulu coastline



Horse Trail overlook



Pīpīwaī Trail bamboo forest

How to Comment



Historic wall near parking

Haleakalā National Park is asking for public feedback on the overall vision for the plan from November 10, 2016, to December 15, 2016. During this period, the public is encouraged to comment on the public scoping questions above and share any additional thoughts on your vision for the Lower Kīpahulu Valley. Please keep in mind when commenting that the unique content of comments received, rather than the number of times a similar comment was heard, is what will help refine the management alternatives. Bulk comments in any format (hard copy or electronic) submitted on behalf of others will not be accepted.

There are a couple of ways for you to share your thoughts and make your voice heard. You may submit your comments at the NPS Planning, Environment, and Public Comment (PEPC) website:

(<http://www.parkplanning.nps.gov/KCP>). Once on the website, select "Open For Comment" to provide your thoughts to the planning team. Comments may also be submitted by email (to HALE_Superintendent@nps.gov with the subject line "KIPA Comprehensive Plan"), or by regular mail to the following address:

National Park Service – Planning Division
ATTN: HALE Kīpahulu Comprehensive Plan Team
PO Box 25287
DENVER CO 80225-0287

The project team will accept comments through December 15, 2016.



Close up of historic wall



'Ohe'o Gulch



View mauka (inland) towards 'Ohe'o Gulch and Kīpahulu Valley from Kūloa Point Trail

Next Steps in the Planning Process

The planning team will analyze comments from the August public and focus group meetings and the public scoping questions included in this newsletter. These comments will help inform the development of the draft plan. The range of alternatives will be presented in the draft plan for public

review. Public comments on the draft plan will then be used for further changes before it is finalized and approved. The following table provides an updated planning schedule, including opportunities for public input.

Planning Schedule

WE
ARE
HERE

Public engagement (Listening sessions and public comment period)	Summer and Fall 2016
Development of draft management strategies with public involvement	Winter and Spring 2017
Develop and refine alternatives	Spring and Summer 2017
Prepare the Plan and Environmental Assessment (EA)	Fall 2017
Public review of the Plan/EA	Winter 2017 – Early 2018
Decision Document and Finding of No Significant Impact (FONSI)	2018

UNITED STATES DEPARTMENT OF THE INTERIOR
NATIONAL PARK SERVICE
DENVER SERVICE CENTER - PLANNING DIVISION
ATTN: HALE KĪPAHULU COMPREHENSIVE PLAN TEAM
PO Box 25287
DENVER CO 80225-0287

FIRST-CLASS MAIL
POSTAGE & FEES PAID
NATIONAL PARK SERVICE
PERMIT NO. G-83

OFFICIAL BUSINESS
PENALTY FOR PRIVATE USE \$300



View of Kīpahulu coastline

Mahalo for your continued interest in the Haleakalā National Park Kīpahulu Comprehensive Plan!