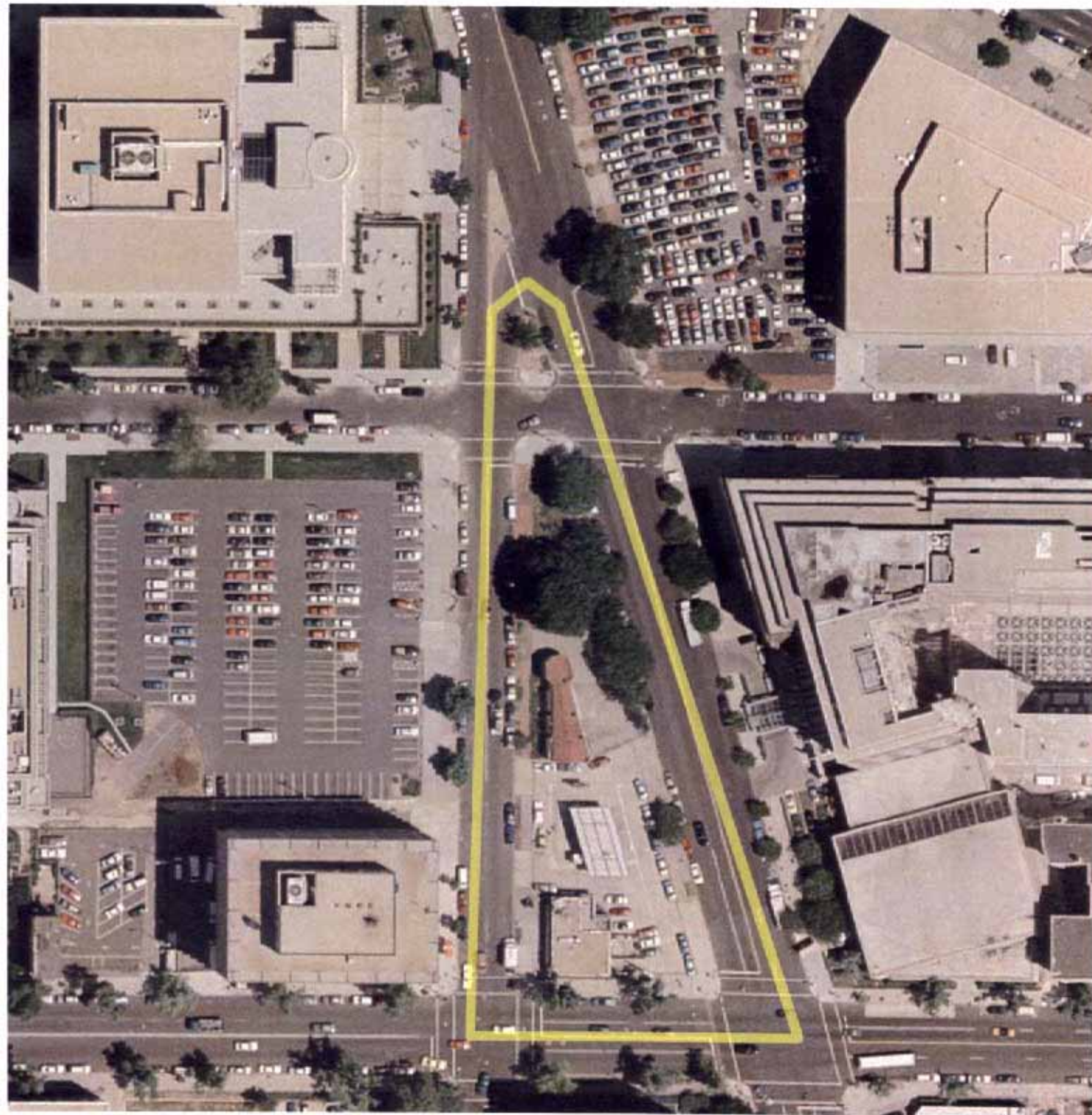


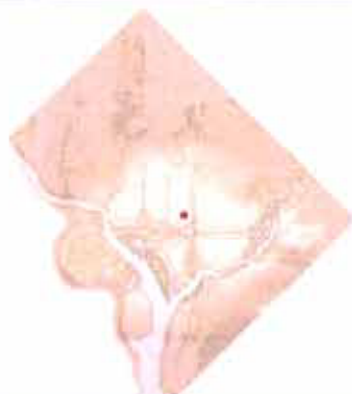
Site #12
New Jersey Ave.
At 1st & E Sts. NW
(not to scale)

Update: The majority
of this site is now the
home of the National
Association of
Realtors headquarters
building. Only an
unacceptably small
land parcel remains
available.



Near Union Station

Location:



Framework Context:



Vicinity:



Site Description Summary:

Situated within two blocks of Union Station, this location is comprised of a small triangular park at the intersection of Massachusetts and New Jersey Avenues. This location represents a node within the corridor where views of the U.S. Capitol and landscape amenities provide a prominent setting. In addition, the redevelopment of vacant parcels in this area continues to redefine the vicinity. Georgetown University Law School is located nearby as are office buildings and surface parking lots.

Physical Characteristics:

Location:	Northwest
Acreage:	0.25 - 0.5
Configuration:	Triangular
Overall Character:	Open, landscaped
Terrain:	Flat
Adjoining Uses:	Office, Institutional, Parking

Urban Design Framework:

Relative Prominence:	Federal Elements
Comp. Plan Element:	Special Street
Framework Element:	Monumental Corridor
Plan Compatibility:	Consistent
Memorial Proximity:	Walk
Potential Identity:	Yes

Site Access:

Vehicular Corridor:	No
Metrorail Proximity:	Fair- Union Station
Metrobus Proximity:	Very Good
Pedestrian Access:	Good
Parking Availability:	Good
Intermodal Station Proximity:	Yes- Metro
Circulator Node Proximity:	Yes
Water Access:	No

Profile:

Development Term:	Present
Ownership:	NPS
ANC:	8C
Current Development Project:	NA
NPS Reservation:	77A/77B
NPS Park Name:	TBD
NPS Total Park Acreage:	TBD

Commemorative Opportunity:

An opportunity exists to incorporate a small scale memorial within this triangular park. With good visibility from Massachusetts Avenue and New Jersey Avenue, this site could accommodate a new memorial within the context of an emerging office district. Good views of the U.S. Capitol from this location provide an excellent opportunity for commemoration. The size and setting of the parcel lend themselves to an understated commemorative element at this location.

Visual Quality:

Prominent Views:	Federal, District Elements
Vistas:	Federal, District Elements
Existing Setting:	Special Street Node
Potential Setting:	Same
Gateway Corridor:	Yes

Historic & Cultural Resources:

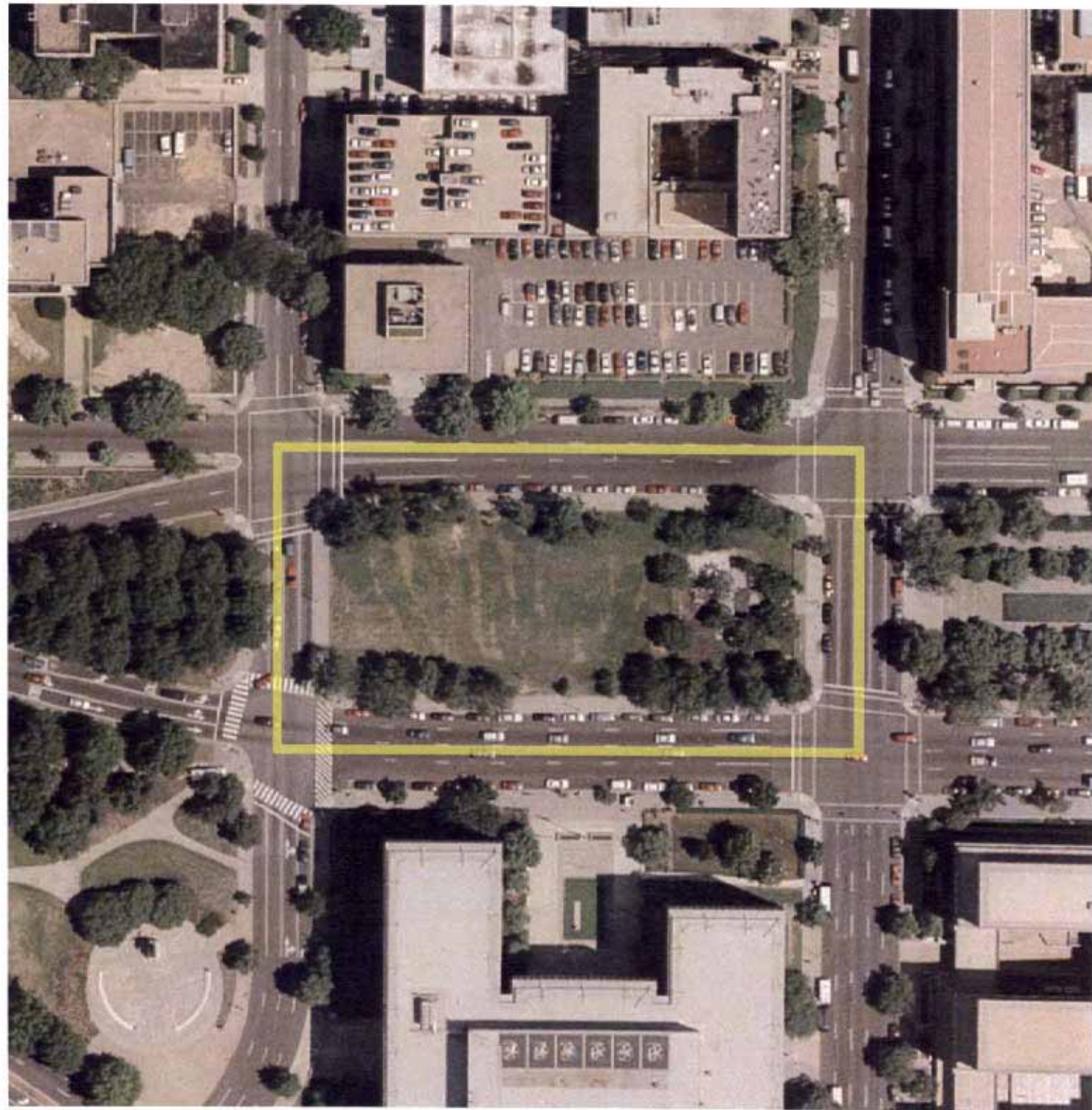
Historic Resources:	Landmark, Special Street
Cultural Resources:	Building, Street, Landscape
Historic District:	NA
Arts/Entertainment District:	NA
Embassy Proximity:	NA
Memorial Zone:	2
Museum Proximity:	Walk

Site Image



Direct view of Capitol from these triangular park areas, which offer prominent settings for appropriately scaled memorial features

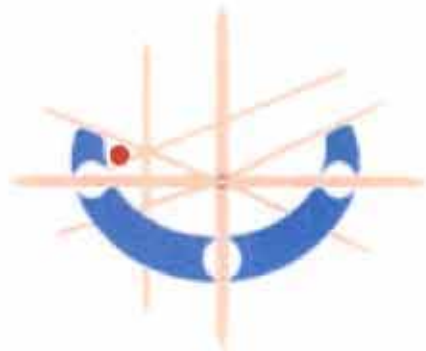
Site #13
Walt Whitman Park
E St. between 19th &
20th Sts. NW
(not to scale)



Location:



Framework Context:



Vicinity:



Site Description Summary

This site location, along E Street between 19th and 20th Streets, NW, is in the Foggy Bottom area west of the White House. The site location is along the E Street corridor at the point where the expressway emerges from its tunnel. The two-acre site has a slightly rolling topography and is primarily green with an open, urban feel. Known as Walt Whitman Park, the eastern quarter of this rectangular site is a playground, while the remainder is a landscaped lawn surrounded by a tree buffer.

Urban Design Conditions

Located at a designated Special Place at the intersection of Special Streets, this site location reinforces the Monumental Corridors component of the Urban Design Framework. The east end of the site has an indirect axial relationship with the White House via New York Avenue. Just west of the site is Virginia Avenue, which provides a direct relationship with the Washington Monument. The site location is within walking distance of other historic and cultural resources, including the Kennedy Center and architecturally significant federal office buildings, such as the historic Department of the Interior and the General Services Administration buildings.

Economic Conditions

The Walt Whitman Park site location offers the potential to accommodate a feature that attracts high visitor traffic, such as a major memorial. However, the economic nature of the area, with existing office and State Department buildings, creates questions about how and where new economic activities would occur. With proper incentives and public/private investment, this site would be highly suitable for a commemorative feature, possibly in partnership with George Washington University. The office buildings presently provide daytime economic activity; the challenge would be to bring new economic benefits north of Virginia Avenue on evenings and weekends.

Transportation Conditions

This site has better passenger vehicle access than public transportation access. The park is located one block away from Virginia Avenue, a major vehicular corridor with nearby public parking facilities including both on-street and garage parking. There is poor Metrorail access with the closest station being Farragut West, located approximately 2,500 feet from the site. Metrobus is directly available. There is a possibility that the Circulator might be routed near the park if the demand is high, however, it is more likely that the route will be closer to the Mall.

Environmental Conditions

The site location features slightly rolling topography consisting of an open lawn area, with ornamental trees on the edges. There are no water resources near the site, and no adverse noise or air quality conditions are present. There also is no evidence of contamination on or near the site.

Commemorative Opportunity:**Jurisdiction: Federal – National Park Service**

This location presents the opportunity to locate one or more small memorials in an existing urban park setting. The park area is approximately one acre in size. The E Street site to the west of 20th Street could also be developed as either a federal memorial location or as a District commemorative site, giving the precinct an attractive pedestrian-oriented park character.

Memorial development would enhance the current open, passive parkland setting of the site in addition to helping transform the E Street corridor into a memorial boulevard space. The transportation characteristics of this site are most compatible with a memorial that will generate a low to moderate number of visitors. A large number of visitors to this location would warrant the provision of additional public transportation facilities such as the Circulator.

Due to the topography, location, and surrounding uses in the area of the site, memorial development would likely require only minor site alterations, including limited grading and no stabilization or utility improvements.

Any future memorial in this location should incorporate some form of interpretive resources related to the life and work of Walt Whitman.



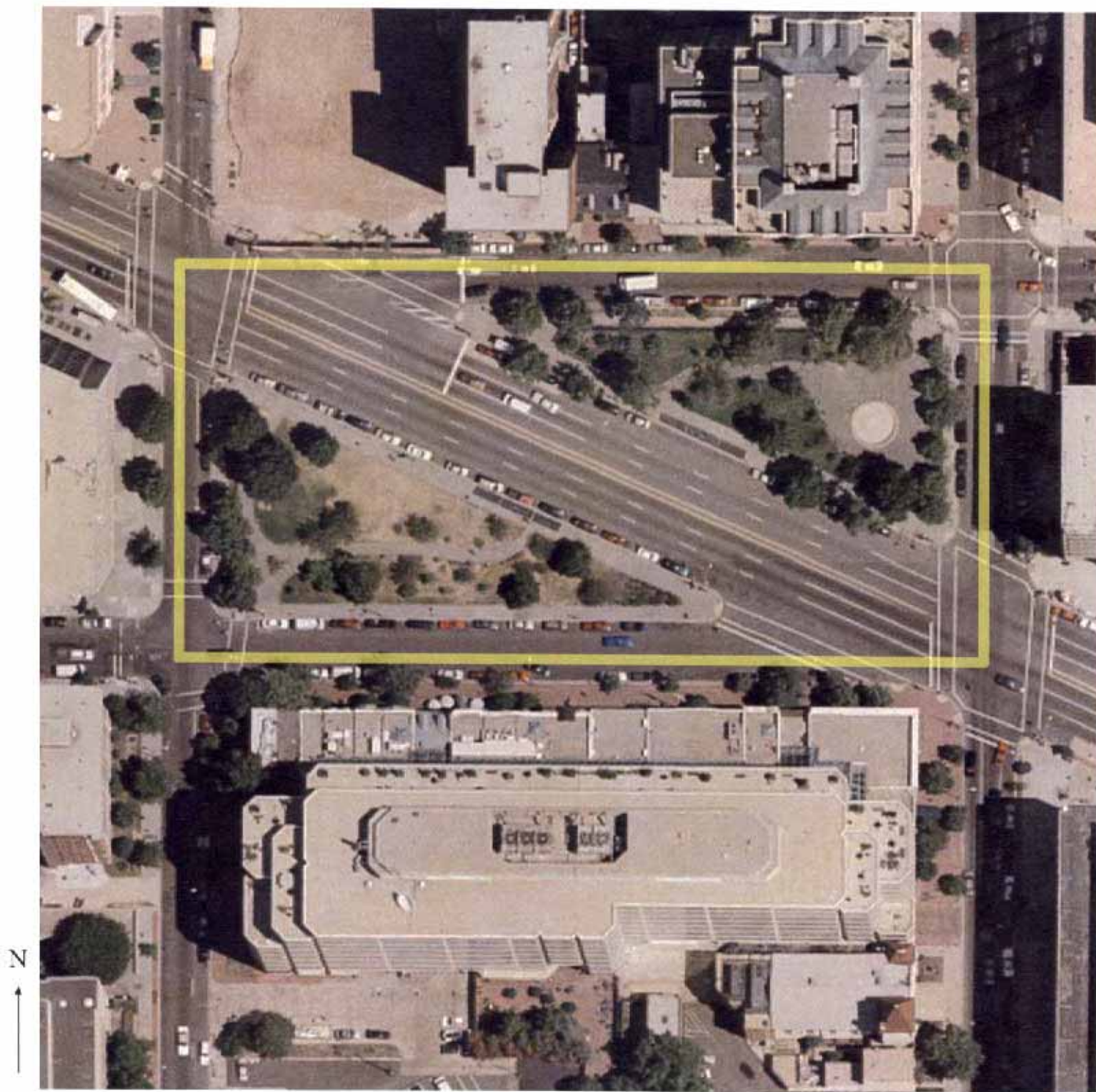
The image above depicts a view looking east from Walt Whitman Park.

Design Considerations:

This site is located within an established public parkland area that is defined by a perimeter of prominent federal and institutional office uses.

1. This location on a major transportation corridor is a gateway to Downtown and is near the White House and President's Park.
2. The E Street corridor has the potential to become a thematic memorial boulevard. This primary location could accommodate a major memorial on the boulevard.
3. The existing urban park is near an enclave of federal office buildings and a memorial could complement these uses. A memorial park would also provide relief to pedestrians and office workers in the area.
4. Memorial design and development in this location should retain and enhance the current urban park setting and open space character, and should respect the urban scale of the park and the surrounding buildings.
5. The opportunity exists to develop a pedestrian-oriented destination memorial at this location.
6. The design should complement the design of nearby Rawlins Park.
7. The site is located where the E Street tunnel rises to grade to become a wide boulevard. The opportunity exists to create a major feature at this point of arrival in the city.

Site #14
James Monroe Park
Pennsylvania Ave.
At 26th Street NW
(not to scale)



On Pennsylvania Avenue, NW

Location:**Framework Context:****Vicinity:****Site Description Summary:**

These existing public spaces provide similar passive recreational and interpretive opportunities for residents, employees, and tourists. Their triangular parcels are presently defined by open landscaped spaces that contrast with nearby higher density office and commercial uses. Their location within the highly visible Pennsylvania Avenue corridor makes these parks appropriate for future memorials. Existing conditions include landscaped terraces with seating and generally level terrain. These parcels represent nodes within this prominent corridor from the White House to Washington Circle.

Physical Characteristics:

Location:	Northwest
Acreage:	0.25 - 1.0
Configuration:	Triangular
Overall Character:	Open / Landscaped
Terrain:	Flat
Adjoining Uses:	Mixed Use

Urban Design Framework:

Relative Prominence:	District / Federal
Comp. Plan Element:	Special Street
Framework Element:	Monumental Corridor
Plan Compatibility:	Consistent
Memorial Proximity:	Walk
Potential Identity:	Yes

Site Access:

Vehicular Corridor:	Yes - Pennsylvania Ave.
Metro Proximity:	Good - Foggy Bottom/Farragut West
Metrobus Proximity:	Good
Pedestrian Access:	Good
Parking Availability:	Good
Intermodal Station Proximity:	Yes - Metro/Circulator
Circulator Node Proximity:	No
Water Access:	No

Profile:

Development Term:	Present
Ownership:	NPS
ANC:	2A
Current Development Project:	NA
NPS Reservations:	028/C30
NPS Park Name:	Triangle
NPS Total Park Acreage:	1.35

Commemorative Opportunity:

Several opportunities exist to incorporate future commemorative features within these public parks. New memorials within these parcels could include both understated elements that would maintain present conditions or dramatic features that would reshape the character of these sites. This range of potential commemorative actions is possible due to the relative absence of highly visible memorials within this section of Pennsylvania Avenue. This corridor would benefit from greater definition of these existing public spaces. Any memorial planned for Monroe or Morrow Parks should contain ancillary interpretive media on the lives of these historic figures.

Visual Quality:

Prominent Views:	District / Federal Elements
Vistas:	District / Federal Elements
Existing Setting:	Special Street / Parkland
Potential Setting:	same
Gateway Corridor:	Yes

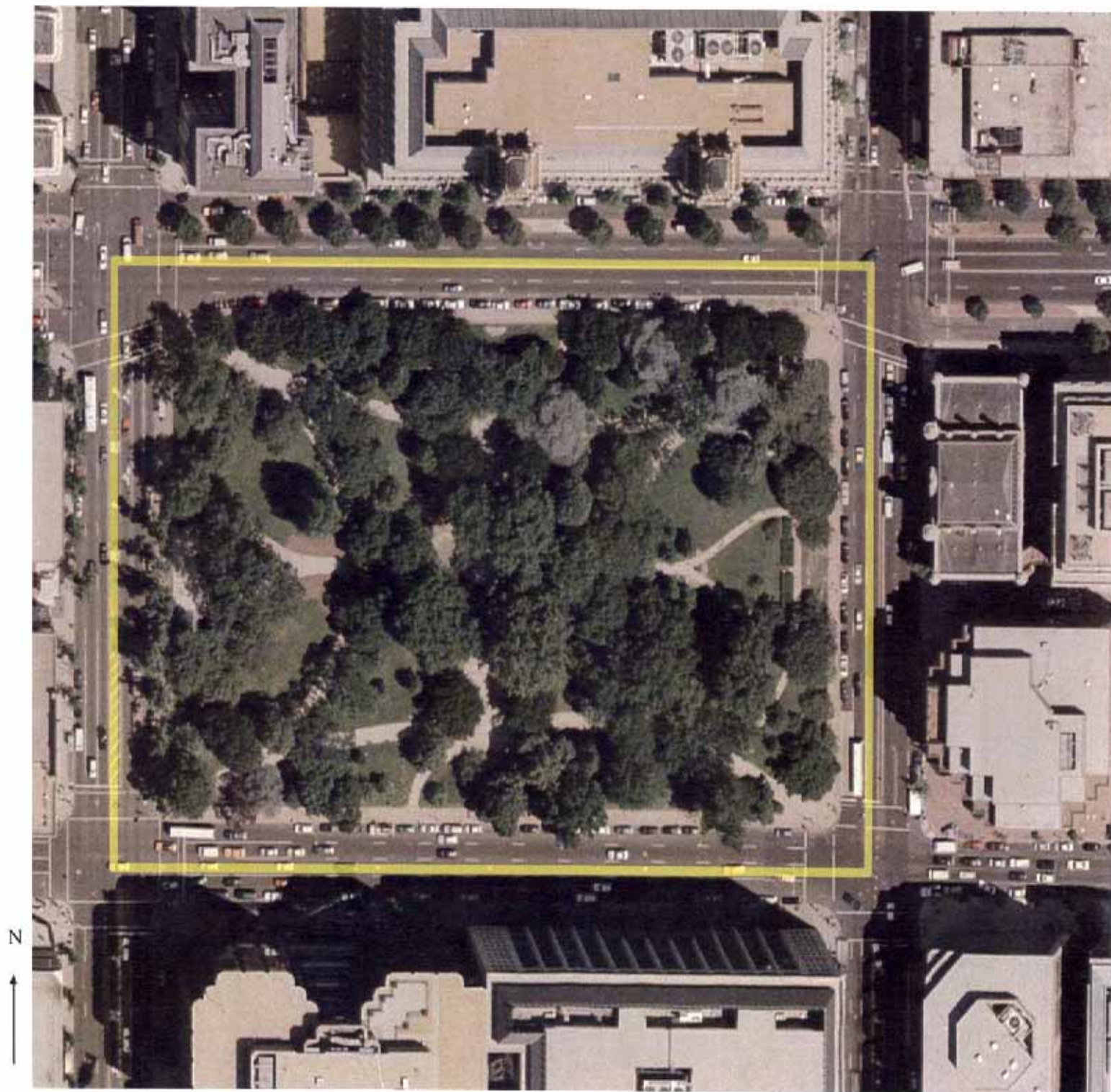
Historic & Cultural Resources:

Historic Resources:	Landmark, Special Street
Cultural Resources:	Building, Street, Landscape
Historic District:	NA
Arts/Entertainment District:	Yes
Embassy Proximity:	Yes
Memorial Zone:	2
Museum Proximity:	Walk

Site Image

View of park on Pennsylvania Avenue between 18th & 19th Streets that could accommodate a small scale memorial feature within the established setting of this prominent corridor.

Site #15
Franklin Square
Eye & K Sts.
13th & 14th Sts. NW
(not to scale)



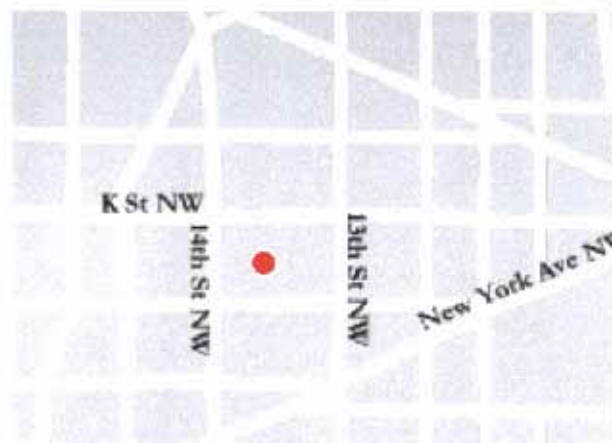
Location:



Framework Context:



Vicinity:



Site Description Summary:

Located within the prominent urban corridor between Washington Circle and Mt. Vernon Square, this five-acre park is one of several public squares in the vicinity that feature prominent commemorative elements. Farragut, McPherson, and Lafayette Squares are located nearby. Within the western limits of Franklin Square is an existing memorial to Commodore Barry. The site features wooded and open lawn areas with an existing fountain feature that defines the central axis of the park. A well-designed fabric of pathways and terrace areas adorns the park. Adjoining uses include prominent historic structures and contemporary office and retail uses. The McPherson Square Station provides direct Metro access to the park.

Physical Characteristics:

Location:	Northwest
Acreage:	0.25-1.0
Configuration:	Rectangular
Overall Character:	Open / Landscaped
Terrain:	Flat
Adjoining Uses:	Mixed Use

Urban Design Framework:

Relative Prominence:	District / Federal
Comp. Plan Element:	Special Street
Framework Element:	Monumental Corridor
Plan Compatibility:	Consistent
Memorial Proximity:	Walk
Potential Identity:	Yes

Site Access:

Vehicular Corridor:	Yes- K Street, NW
Metro Rail Proximity:	Good- McPherson Square
Metrobus Proximity:	Very Good
Pedestrian Access:	Good
Parking Availability:	Good
Intermodal Station Proximity:	Yes - Metro/Circulator
Circulator Node Proximity:	Yes
Water Access:	No

Profile:

Development Term:	Present
Ownership:	NPS
ANC:	2C
Current Development Project:	NA
NPS Reservation:	9
NPS Park Name:	Franklin Square
NPS Total Park Acreage:	4.79

Commemorative Opportunity:

With several existing commemorative features and museums located nearby, this site provides several opportunities for locating a small scale memorial that would complement existing park features. The established scale and character of the park provide several appropriate landscape settings for commemorative features of a small size. The vicinity of Franklin Square will become increasingly more prominent within the city as a visitor destination once the District of Columbia convention center and the city museum at nearby Mt. Vernon Square are opened. The National Museum of Women in the Arts is also located within one block.

Visual Quality:

Prominent Views:	District / Federal Elements
Vistas:	District / Federal Elements
Existing Setting:	Special Street / Parkland
Potential Setting:	Same
Gateway Corridor:	NA

Historic & Cultural Resources:

Historic Resources:	Landmark, Special Street
Cultural Resources:	Building, Street, Landscape
Historic District:	NA
Arts/Entertainment District:	NA
Embassy Proximity:	NA
Memorial Zone:	2
Museum Proximity:	Walk

Site Image



Internal view of Franklin Square taken from western limits of park near 14th Street. Existing fountain depicts the central portion of the park. A future small scale memorial could complement existing park features.