

Remarks on Sites 9-24

Location and Overview:

Sites 9-24 are located primarily in Area II and are farther from the National Mall than Sites 1-8. At the March 25, 2002 Eisenhower Memorial Commission (EMC) meeting, the recommendation to remove these 16 sites from further consideration was approved. They were initially part of a list of 24 potential sites created by Dr. Michael Richman, a consultant to the Commission.

Area I Consideration:

Also during the March 2002 meeting, EMC Chairman, Rocco C. Siciliano, related the results of his presentation to the National Capital Memorial Commission (NCMC) requesting their recommendation of Area I designation for the Eisenhower Memorial. The NCMC had voted unanimously to recommend this memorial for location within Area I, deeming it to be of "pre-eminent historical and lasting significance." The Commission was encouraged by this recommendation to consider sites within Area I.

First Evaluation:

With the desire to respect the significance of Eisenhower's legacy, especially as developed by the Eisenhower Legacy Committee, the EMC considered Sites 1-8 from the original list, all of which are located in Area I and are considered by the Commission to be more prominent and accessible, therefore meeting key site selection criteria. Sites 9-24 were removed from further consideration based on their lack of prominence and ready public access.

Site #9
10th Street Overlook
L'Enfant Promenade, SW
(not to scale)

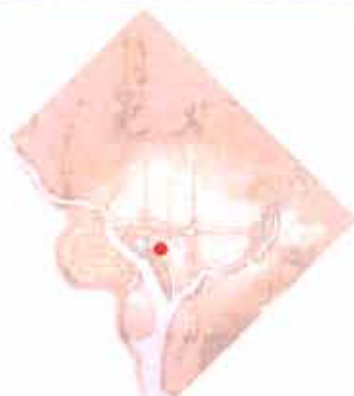


Update: This site is
currently being
considered by the
National Museum of
African American
History and Culture

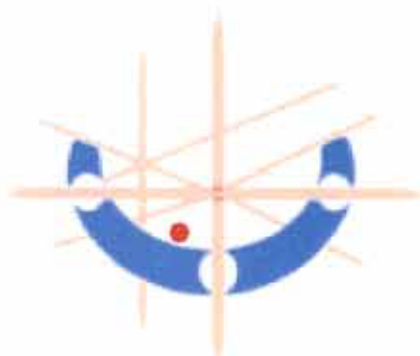
N



Location:



Framework Context:



Vicinity:



Site Description Summary

This potential site is located at the terminus of the 10th Street promenade, immediately to the south of L'Enfant Plaza, SW. This four-acre site currently includes a small plaza and surrounding hillside, referred to as Benjamin Banneker Park. It connects via a bridge over the Southwest Freeway to a pedestrian promenade to L'Enfant Plaza, with a possible connection to Maine Avenue. The elliptical-shaped site location is in an open urban setting with hardscape, a fountain, benches, lights, and a few trees. Surrounding land uses include offices, hotel, roadways, and surface parking.

Urban Design Conditions

The site is highly visible on a crest above the Washington Channel and the Southwest waterfront. The site, which has been designated a Special Place, is historically important as the southern terminus of 10th Street and the L'Enfant Promenade. The location has a direct visual relationship with and is within walking distance of many federal elements, including the Jefferson Memorial. The site also is immediately adjacent to L'Enfant Plaza, which has a strong identity with numerous office, commercial, and institutional uses, as well as a Metrorail station. The site location at a topographic high point affords 360-degree views of the city, including a prominent view of the Washington Channel. This site location offers the opportunity to create a federal focal memorial that can reconnect the National Mall and L'Enfant Plaza to Maine Avenue and the water.

Economic Conditions

A museum or memorial at the 10th Street Overlook site would create new visitor traffic, both pedestrian and automotive. A significant potential exists for increased use of the L'Enfant Plaza underground amenities and shops. A commemorative feature or museum on this site, properly executed, could also build an economic link from the Mall to Water and G Streets in Southwest. Currently, these areas do not benefit greatly from tourism and visitor traffic to Washington D.C. This link, along with the possibility of drawing water taxi traffic heading for the Washington Mall, would help to develop the neighborhoods economically.

Transportation Conditions

This site has an excellent supporting transportation system. The closest Metrorail station is L'Enfant Plaza (approximately 1,500-feet away), through which the Yellow, Blue, Orange and Green lines run. It is expected that a significant percentage of visitors to a memorial/museum at this location would use Metrorail because of the number of lines connecting at L'Enfant Plaza and the synergy created from the surrounding attractions. Likewise, public transportation use would increase with the implementation of the Circulator system and the water transportation system. The Circulator system has the potential of connecting to both L'Enfant Plaza and the water transportation system, whose dock would be less than 1,000 feet from the site. There are excellent pedestrian facilities along the L'Enfant Promenade. The transportation characteristics demonstrate that it would be possible to accommodate a high volume of visitors at a future memorial/museum on the site.

Environmental Conditions

The open, urban setting of this site location features hardscaping, with design features to support the existing fountain and parkland. However, the surrounding hillside features a mix of roadway and natural resources associated with the site. The steeply sloped hillside has a lawn area. The site receives a low to moderate level of noise and some adverse air quality from airplanes in the National Airport flight path and from automobile traffic on the Southeast/Southwest Freeway (I-395). However, there is minimal adverse air quality from the automobile and airplane traffic. There is no evidence of previous industrial uses or environmental contamination on the site.

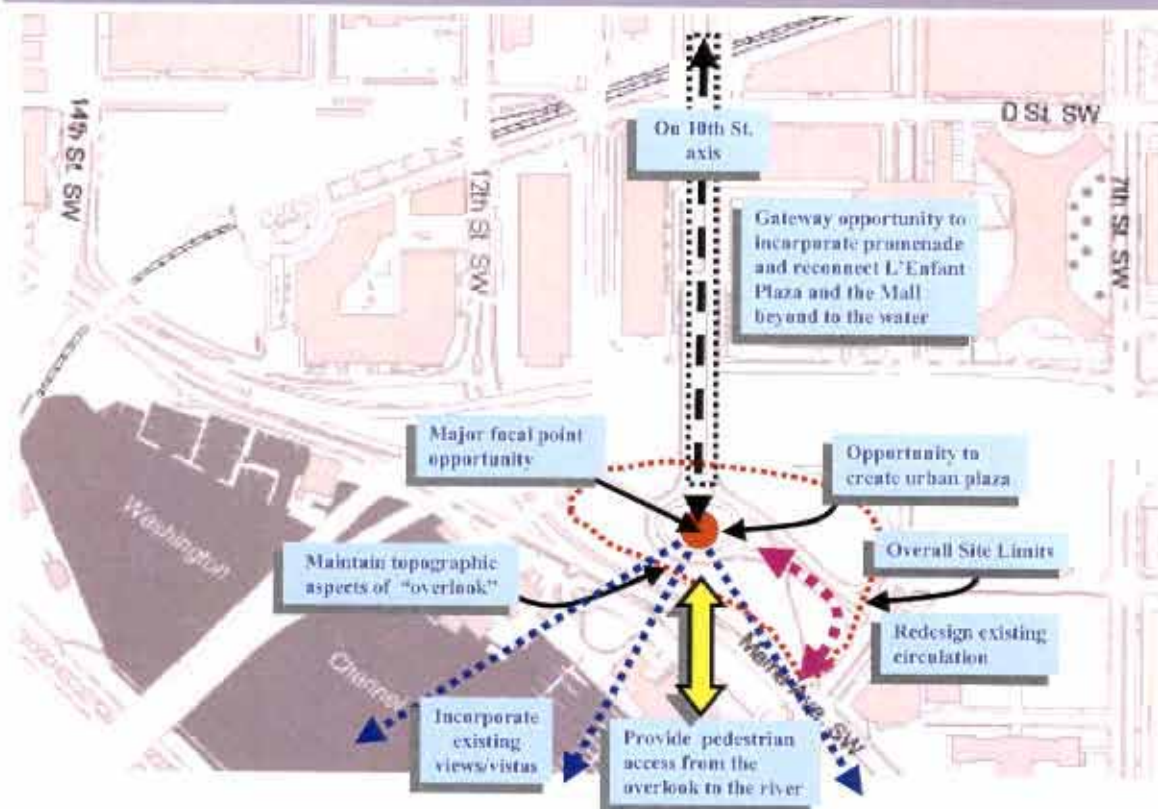
Commemorative Opportunity:**Jurisdiction: Federal – National Park Service**

Memorial development at this location could draw visitors down the 10th Street promenade from the Smithsonian museums to the Washington Channel through both direct physical connections and amenities that could be provided within the corridor.

Future connection to a Legacy-proposed pedestrian footbridge over Washington Channel would be crucial to create a seamless experience from the National Mall to the Washington Channel and to Hains Point, and beyond.

In order to take advantage of the waterfront position, the path from the overlook to the waterfront needs to be improved with a wayfinding system. Memorial development should also enhance the views afforded by this scenic overlook.

Since the slope conditions are generally steep, future memorial construction could require moderate grading and slope stabilization. Potential redesign of the circulation system around the overlook, as well as possible construction of pedestrian access to the waterfront, may require further environmental assessment and remediation activities.

Design Considerations:

The view is looking south to the terminus of the L'Enfant Promenade (10th Street), overlooking Maine Avenue, SW, and toward the fountain currently located at the overlook.

1. The site is appropriate for a major memorial and/or museum at this terminus of 10th Street, a Special Street. The memorial should serve as a focal point on the 10th Street promenade and should provide reciprocal views to and from the waterfront.

2. The site is a significant scenic overlook and any future memorial and/or museum should respect and enhance these existing views.

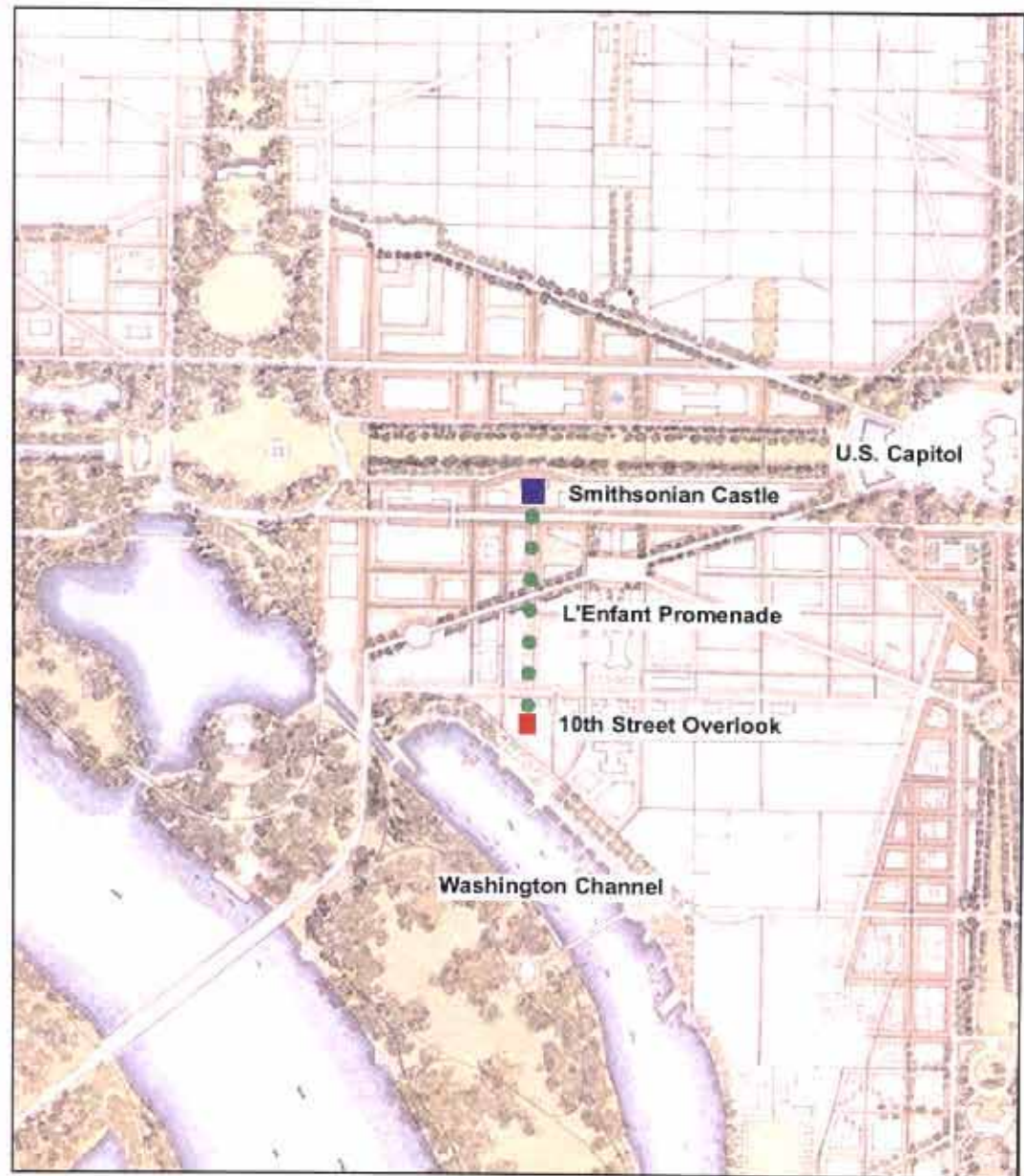
3. Future reciprocal views could include the Jefferson Memorial (which is currently obscured by Interstate 395) and the Smithsonian Institution Building ("the Castle") on Independence Avenue (which would be visible if the Forrestal Building were removed sometime in the future).

4. In the L'Enfant Plan, 10th Street connects with the Washington Channel. Development of this site should physically connect 10th Street and the waterfront areas. Safe pedestrian access should be provided through the memorial site.

5. This could be an important pedestrian connection to the water. The memorial should provide amenities to draw pedestrians from L'Enfant Plaza and the surrounding federal enclave to the overlook and the waterfront beyond.

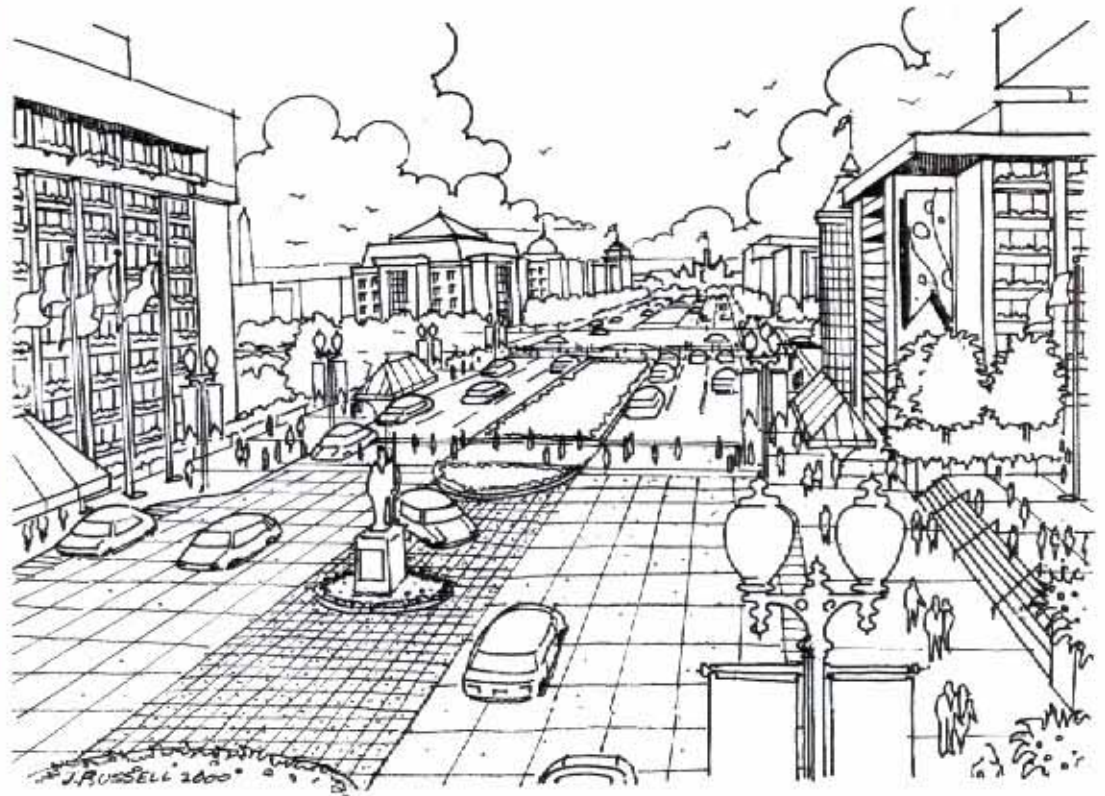
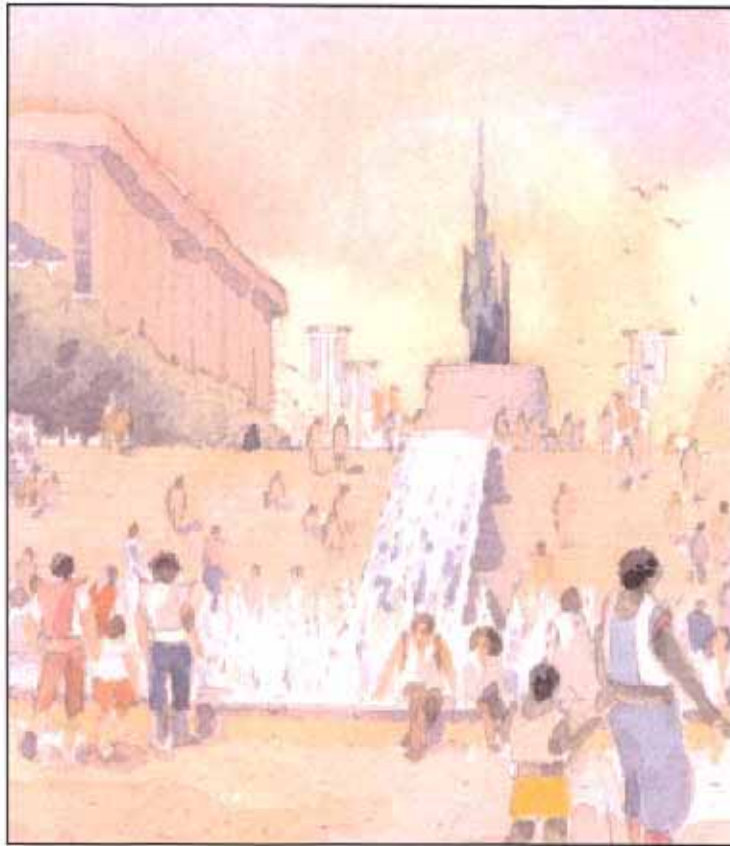
6. A proposed memorial to Benjamin Banneker has been sited along the promenade between this site and Independence Avenue on axis with L'Enfant Plaza.

Design Considerations:



Existing conditions within the L'Enfant Promenade, looking north to the Forrestal Building beyond which the Smithsonian Institution Building is located. Revitalization and redefinition of this area could be complemented by future improvements and the potential introduction of commemorative elements within the Promenade and Overlook.

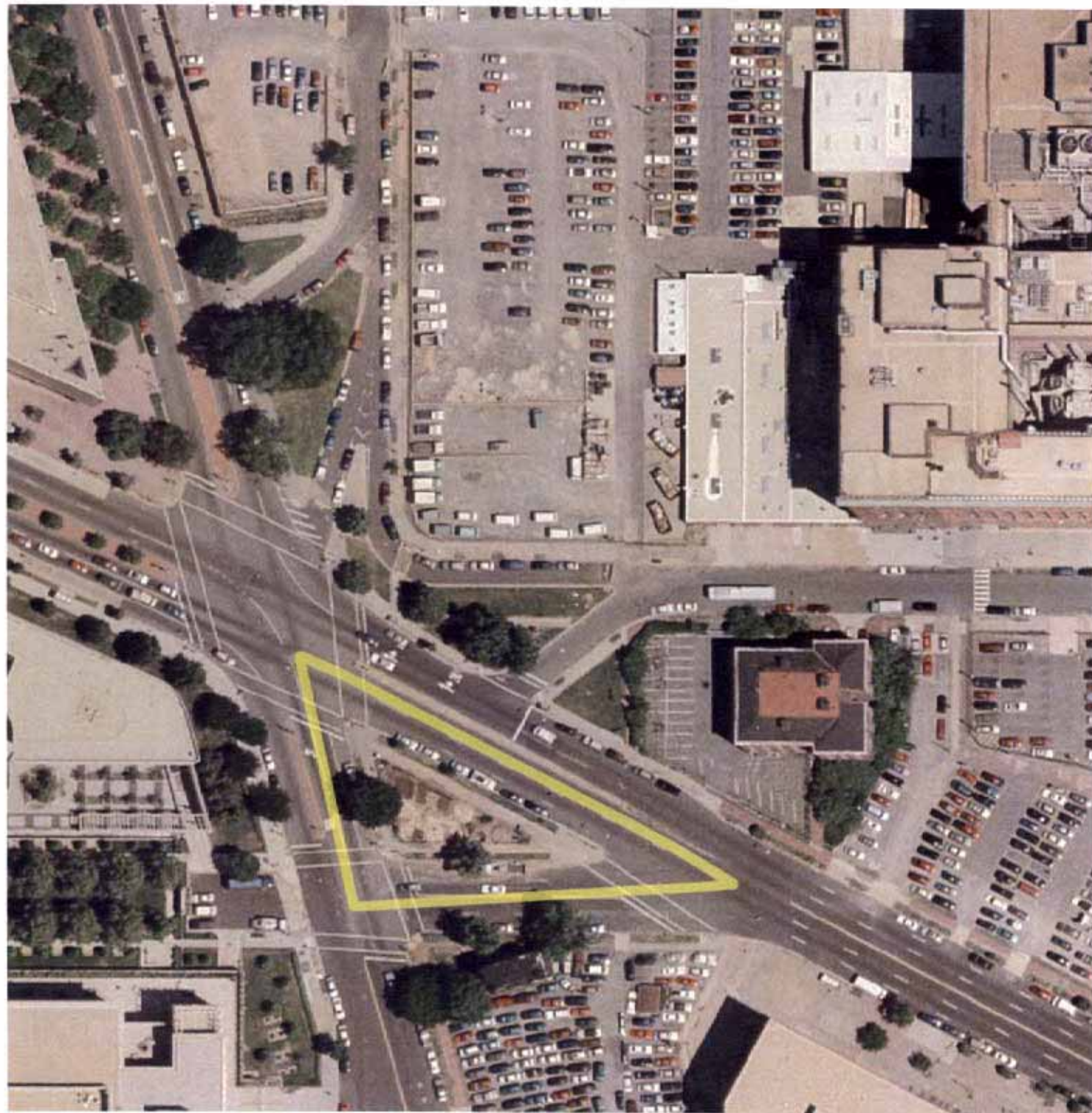
Design Proposals:



Concepts for revitalizing the L'Enfant Promenade with improvements that redefine the 10th Street Overlook while reshaping the existing setting of the Promenade. Views from within the Promenade to the Smithsonian Institution Building could be re-established, providing improved linkage between the National Mall and the Washington Channel area.

Site #10
New Jersey &
Massachusetts Aves.
At 1st & G Sts. NW
(not to scale)

Update: This site
was approved in
March 2005 for the
Victims of
Communism
Memorial



Near Union Station

Location:



Framework Context:



Vicinity:



Site Description Summary:

Situated within two blocks of Union Station, this location is comprised of a small triangular park at the intersection of Massachusetts and New Jersey Avenues. This location represents a node within the corridor where views of the U.S. Capitol and landscape amenities provide a prominent setting. In addition, the redevelopment of vacant parcels in this area continues to redefine the vicinity. Georgetown University Law School is located nearby as are office buildings and surface parking lots.

Physical Characteristics:

Location:	Northwest
Acreage:	0.25 - 0.5
Configuration:	Triangular
Overall Character:	Open, landscaped
Terrain:	Flat
Adjoining Uses:	Office, Institutional, Parking

Urban Design Framework:

Relative Prominence:	Federal Elements
Comp. Plan Element:	Special Street
Framework Element:	Monumental Corridor
Plan Compatibility:	Consistent
Memorial Proximity:	Walk
Potential Identity:	Yes

Site Access:

Vehicular Corridor:	No
Metro-rail Proximity:	Fair- Union Station
Metrobus Proximity:	Very Good
Pedestrian Access:	Good
Parking Availability:	Good
Intermodal Station Proximity:	Yes- Metro
Circulator Node Proximity:	Yes
Water Access:	No

Profile:

Development Term:	Present
Ownership:	NPS
ANC:	8C
Current Development Project:	NA
NPS Reservation:	77A/77B
NPS Park Name:	TBD
NPS Total Park Acreage:	TBD

Commemorative Opportunity:

An opportunity exists to incorporate a small scale memorial within this triangular park. With good visibility from Massachusetts Avenue and New Jersey Avenue, this site could accommodate a new memorial within the context of an emerging office district. Good views of the U.S. Capitol from this location provide an excellent opportunity for commemoration. The size and setting of the parcel lend themselves to an understated commemorative element at this location.

Visual Quality:

Prominent Views:	Federal, District Elements
Vistas:	Federal, District Elements
Existing Setting:	Special Street Node
Potential Setting:	Same
Gateway Corridor:	Yes

Historic & Cultural Resources:

Historic Resources:	Landmark, Special Street
Cultural Resources:	Building, Street, Landscape
Historic District:	NA
Arts/Entertainment District:	NA
Embassy Proximity:	NA
Memorial Zone:	2
Museum Proximity:	Walk

Site Image



Direct view of Capitol from these triangular park areas, which offer prominent settings for appropriately scaled memorial features

Site #11
New Jersey &
Massachusetts Aves.
1st & H Sts. NW
(not to scale)



Near Union Station

Location:**Framework Context:****Vicinity:****Site Description Summary:**

Situated within two blocks of Union Station, this location is comprised of a small triangular park at the intersection of Massachusetts and New Jersey Avenues. This location represents a node within the corridor where views of the U.S. Capitol and landscape amenities provide a prominent setting. In addition, the redevelopment of vacant parcels in this area continues to redefine the vicinity. Georgetown University Law School is located nearby as are office buildings and surface parking lots.

Physical Characteristics:

Location:	Northwest
Acreage:	0.25 - 0.5
Configuration:	Triangular
Overall Character:	Open, landscaped
Terrain:	Flat
Adjoining Uses:	Office, Institutional, Parking

Urban Design Framework:

Relative Prominence:	Federal Elements
Comp. Plan Element:	Special Street
Framework Element:	Monumental Corridor
Plan Compatibility:	Consistent
Memorial Proximity:	Walk
Potential Identity:	Yes

Site Access:

Vehicular Corridor:	No
Metrorail Proximity:	Fair- Union Station
Metrobus Proximity:	Very Good
Pedestrian Access:	Good
Parking Availability:	Good
Intermodal Station Proximity:	Yes- Metro
Circulator Node Proximity:	Yes
Water Access:	No

Profile:

Development Term:	Present
Ownership:	NPS
ANC:	BC
Current Development Project:	NA
NPS Reservation:	77A/77B
NPS Park Name:	TBD
NPS Total Park Acreage:	TBD

Commemorative Opportunity:

An opportunity exists to incorporate a small scale memorial within this triangular park. With good visibility from Massachusetts Avenue and New Jersey Avenue, this site could accommodate a new memorial within the context of an emerging office district. Good views of the U.S. Capitol from this location provide an excellent opportunity for commemoration. The size and setting of the parcel lend themselves to an understated commemorative element at this location.

Visual Quality:

Prominent Views:	Federal, District Elements
Vistas:	Federal, District Elements
Existing Setting:	Special Street Node
Potential Setting:	Same
Gateway Corridor:	Yes

Historic & Cultural Resources:

Historic Resources:	Landmark, Special Street
Cultural Resources:	Building, Street, Landscape
Historic District:	NA
Arts/Entertainment District:	NA
Embassy Proximity:	NA
Memorial Zone:	2
Museum Proximity:	Walk

Site Image

Direct view of Capitol from these triangular park areas, which offer prominent settings for appropriately scaled memorial features