

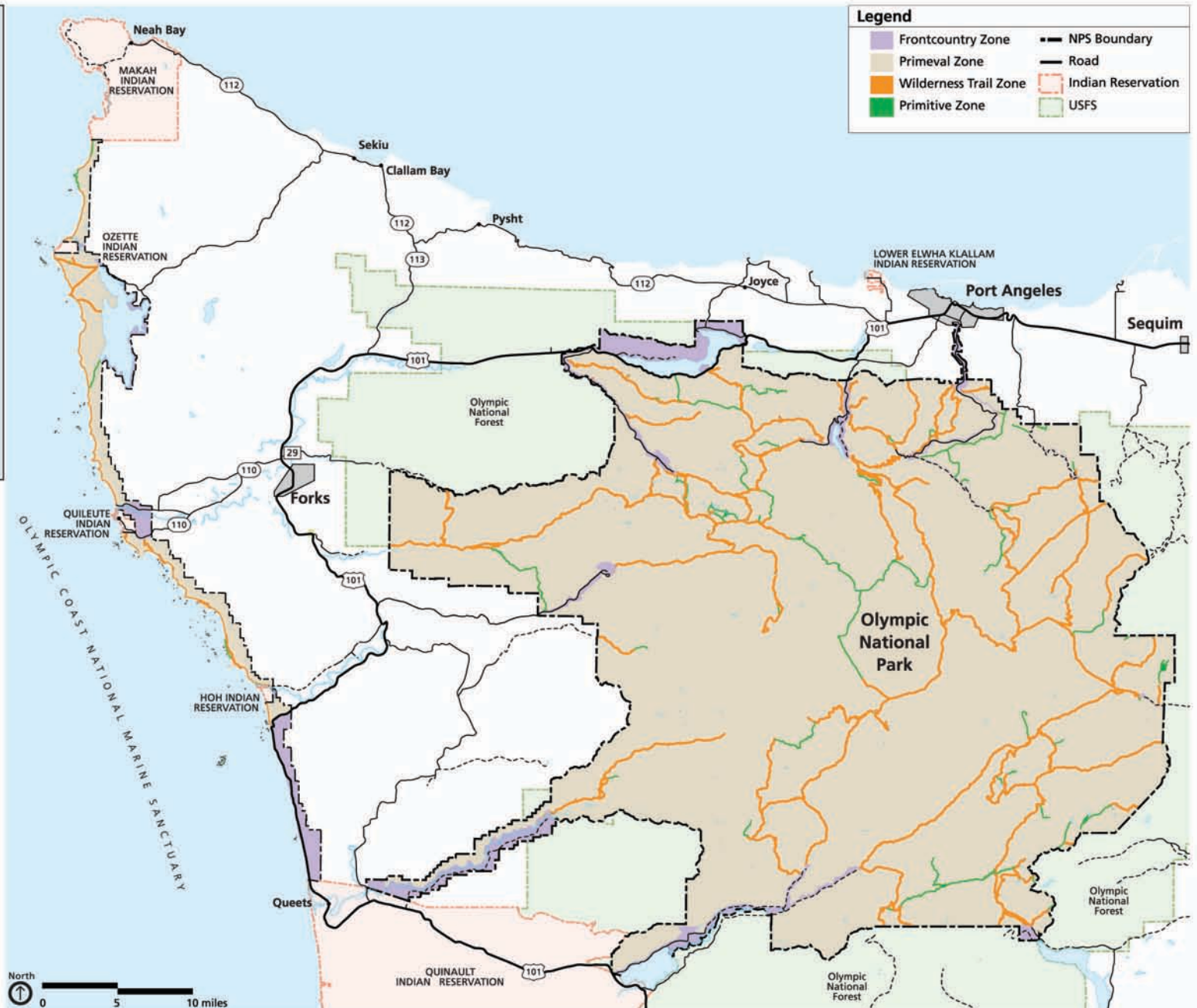
Wilderness Alternative A - Current Management

1. Existing trails for hiking would be retained and maintained. Some way trails would be allowed to remain and some would be removed to minimize resource damage and improve visitor experience.

Stock use would continue on some trails.

Opportunities for solitude would continue to be readily available.

2. In accordance with the Wilderness Act, some nonhistoric facilities would be removed. Some degraded structures would be rehabilitated. Facilities might include temporary research facilities, trail bridges, radio repeaters, historic structures, and boundary and resource signs.



Wilderness Alternative B - Resource Protection Emphasis

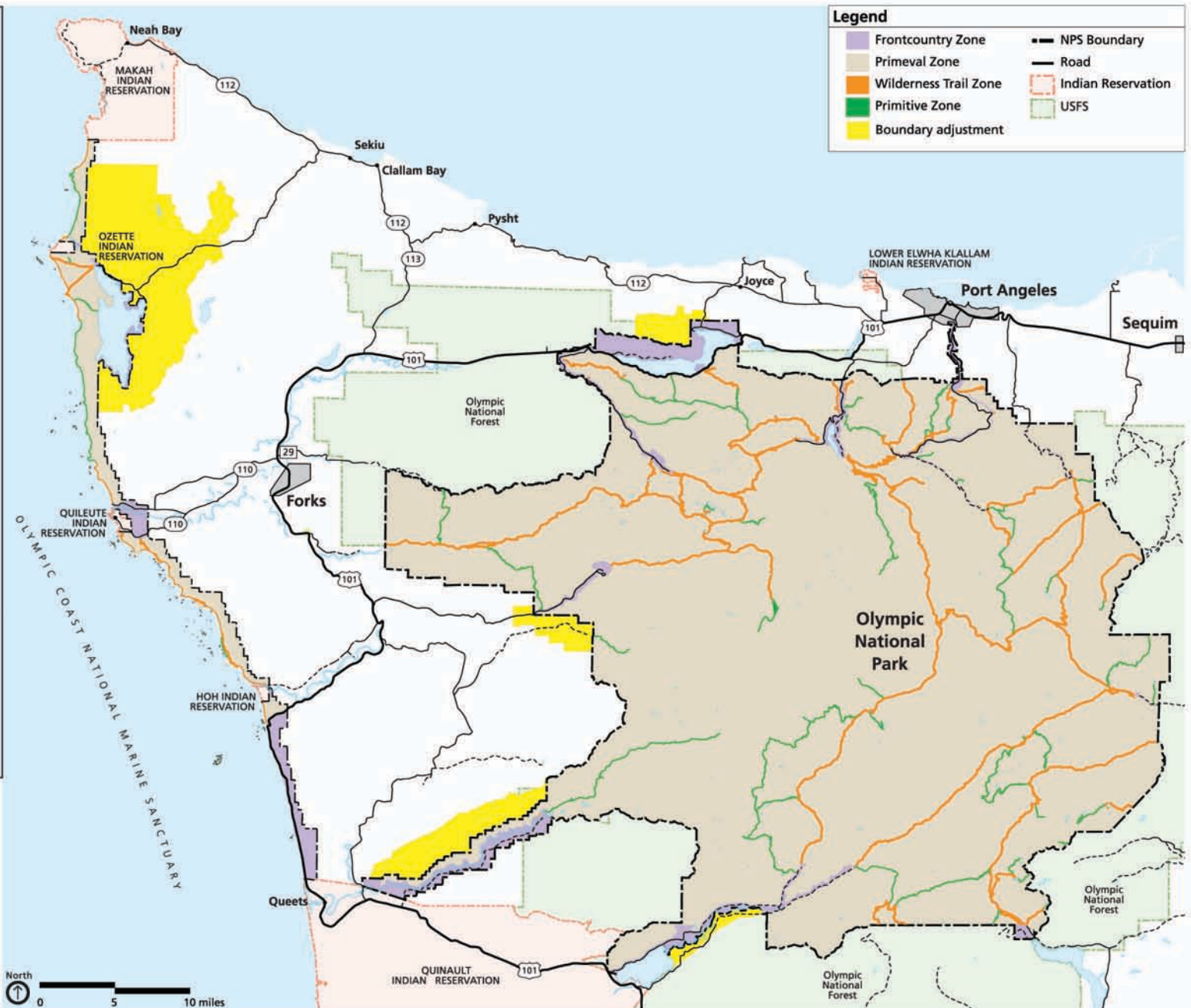
1. Some wider trails would be converted to narrower trails to provide more solitude in the wilderness setting. There would be no new trails developed in the wilderness; however, trail reroutes would be authorized to protect resources, for public safety, and/or to maintain access after storms or trail damage.

Fewer opportunities for stock use would be provided.

More opportunities for solitude would be provided.

2. Facilities would be retained, maintained, and/or improved in accordance with the Wilderness Act. Facilities might include temporary research facilities, trail bridges, radio repeaters, historic structures, and boundary and resource signs.

Where necessary and appropriate, as determined by the minimum requirement analysis, facilities could be provided (e.g. privies, signs, storage shed, tent platforms) for the management of wilderness and the protection of wilderness values and character or for administrative or safety purposes. If determined inappropriate, some nonhistoric facilities may be removed.



Wilderness Alternative C - Visitor Opportunities Emphasis

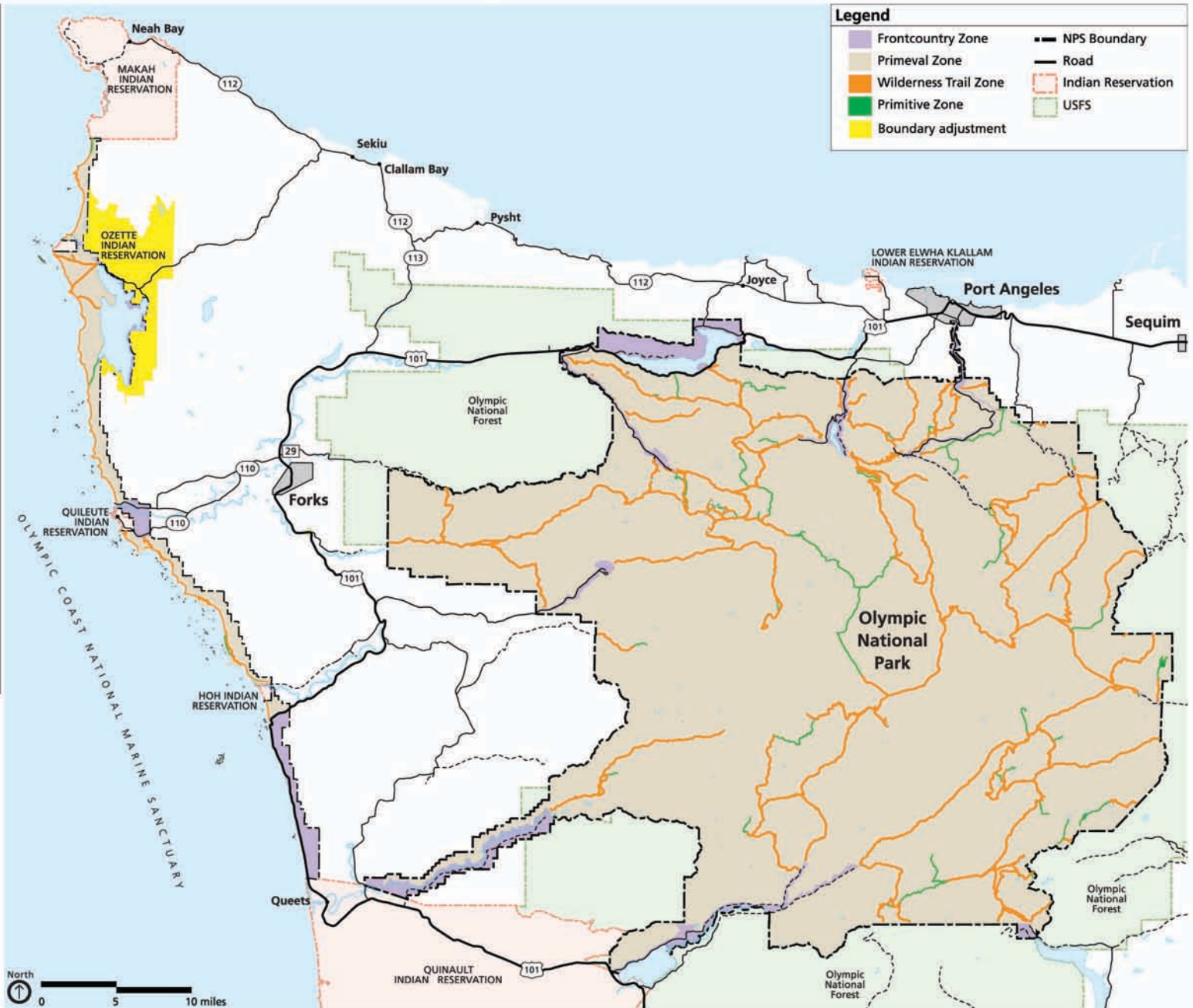
1. Some of the narrower trails would be converted to wider trails. Some abandoned trails might be restored to usable condition. Some way trails would be allowed to remain; others would be removed. Some new trail segments would be developed.

Fewer opportunities for solitude would be provided.

More opportunities for stock use would be provided. Trails would be wider and maintained to stock standard.

2. Most facilities would be retained, maintained, and/or improved in accordance with the Wilderness Act. Facilities might include temporary research facilities, trail bridges, radio repeaters, historic structures, and boundary and resource signs.

Where appropriate and justified, facilities (e.g. privies, signs, storage shed, tent platforms) necessary for the management of wilderness and the protection of wilderness values and character could be provided for administrative or safety purposes.



Wilderness Alternative D - Preferred Alternative

1. Most existing trails for hiking would be retained and maintained to park trail standards. Some paths and routes (i.e., way trails, social trails) might be removed for resource protection. Trails or trail reroutes may be authorized to protect resources, for public safety, and/or to provide access after storm or trail damage.

In some areas, stock use opportunities could be reduced.

Opportunities for solitude would continue to be readily available and may slightly increase.

2. Most facilities would be retained, maintained and/or improved, if these facilities are determined to be essential to meet the minimum requirements for the administration of the wilderness. Examples of improvements might include technological improvements to radio repeaters, and the use of more sustainable wilderness sanitation facilities. Facilities might include ranger stations, temporary research facilities, trail bridges, radio repeaters, historic structures, and boundary and resource signs.

Where necessary and appropriate, as determined by the minimum requirement analysis, facilities could be provided (e.g. privies, signs, storage shed, tent platforms) for the management of wilderness and the protection of wilderness values and character or for administrative or safety purposes. If determined inappropriate, some nonhistoric facilities may be removed.

