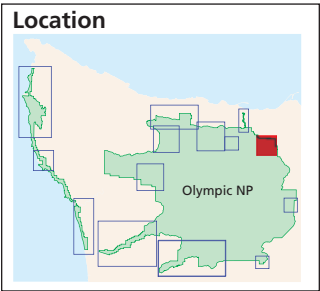
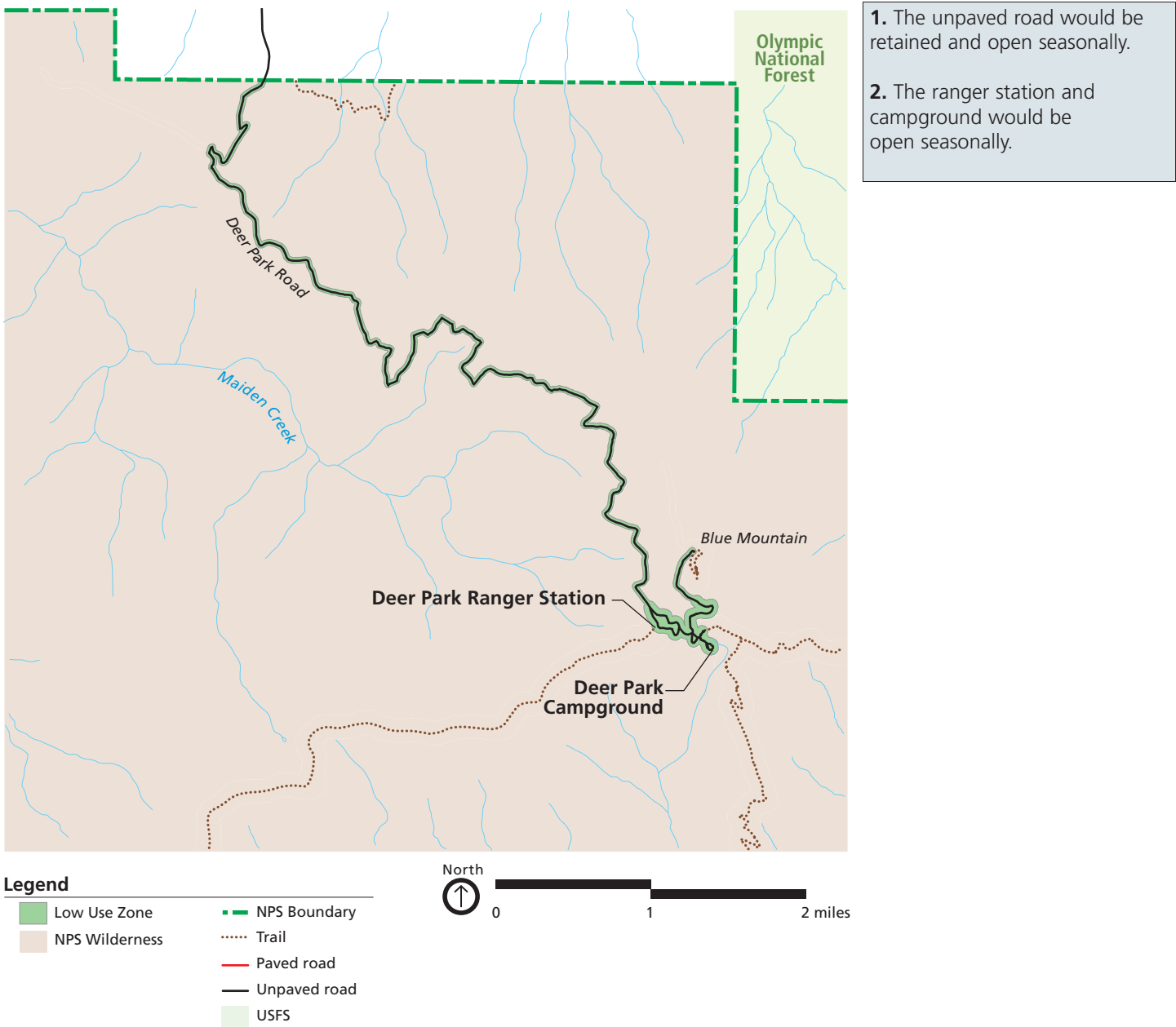
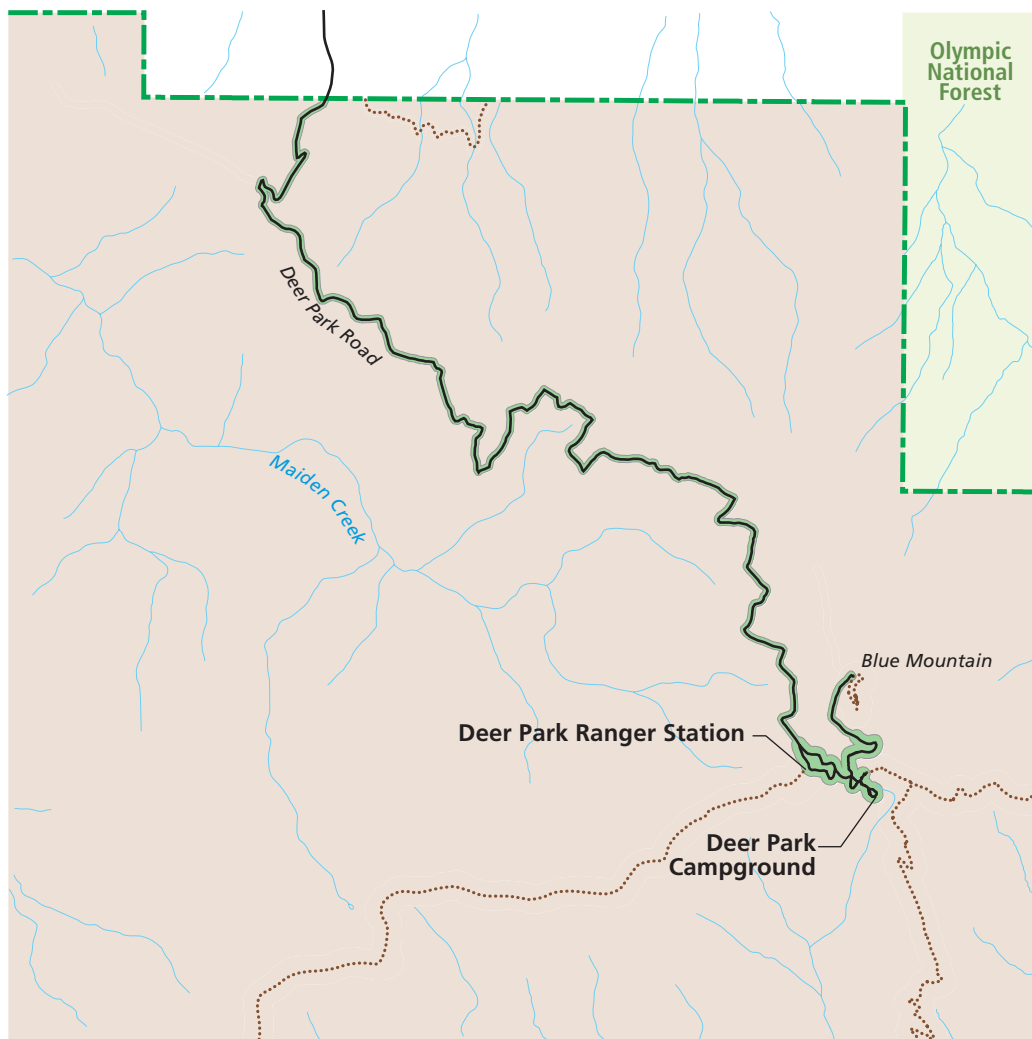


Deer Park Alternative A - Current Management



Deer Park Alternative B - Resource Protection Emphasis



1. The unpaved road would be retained and open seasonally.
2. The ranger station would be eliminated and the campground would be reduced or eliminated.

Legend

 Low Use Zone	 NPS Boundary
 NPS Wilderness	 Trail
	 Paved road
	 Unpaved road
	 USFS

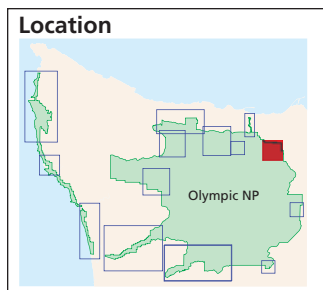
North



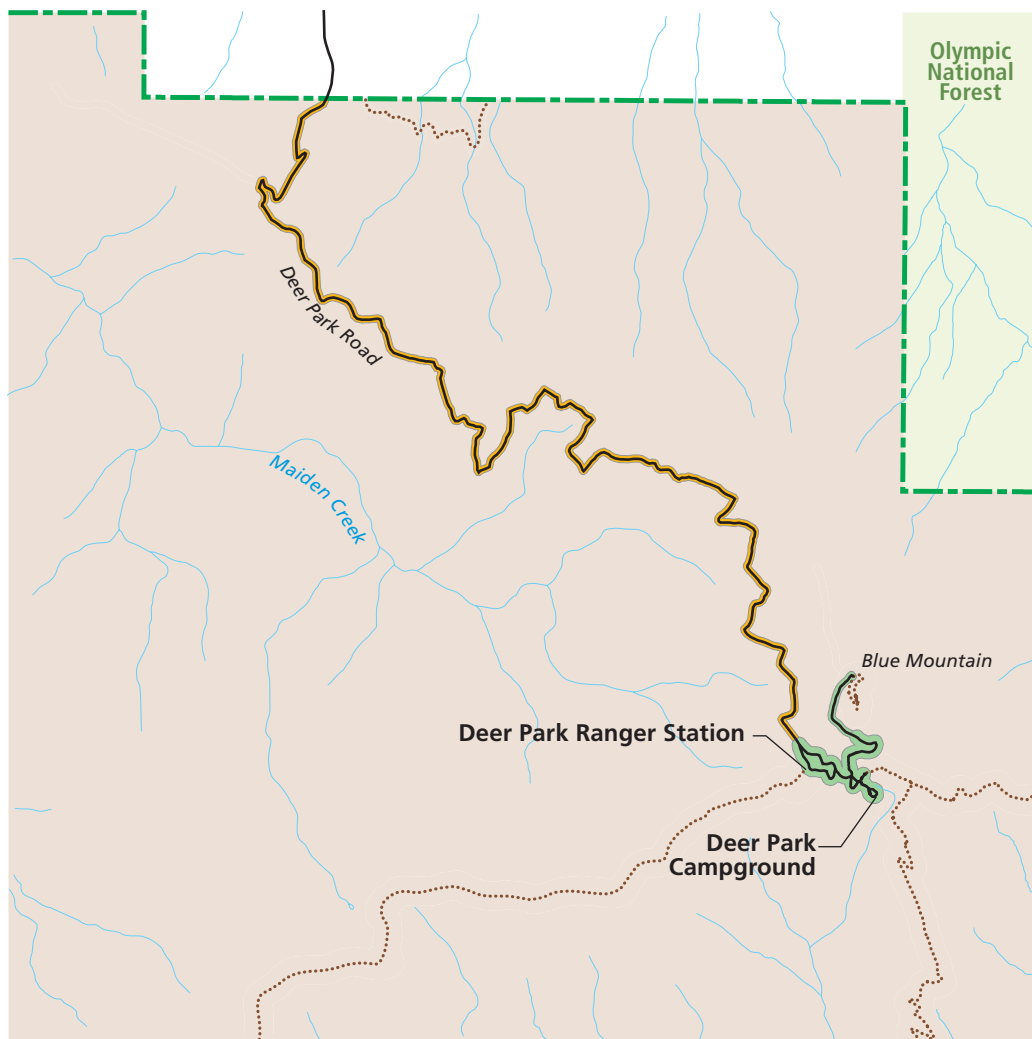
0

1

2 miles



Deer Park Alternative C - Visitor Opportunities Emphasis



1. The road would be paved and open year-round.
2. The ranger station would be retained and campground would be expanded.

Legend

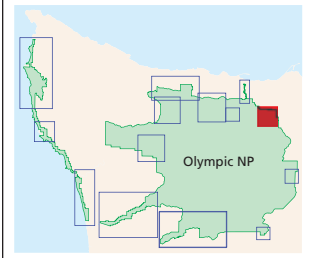
 Low Use Zone	 NPS Boundary
 Day Use Zone	 Trail
 NPS Wilderness	 Paved road
	 Unpaved road
	 USFS

North

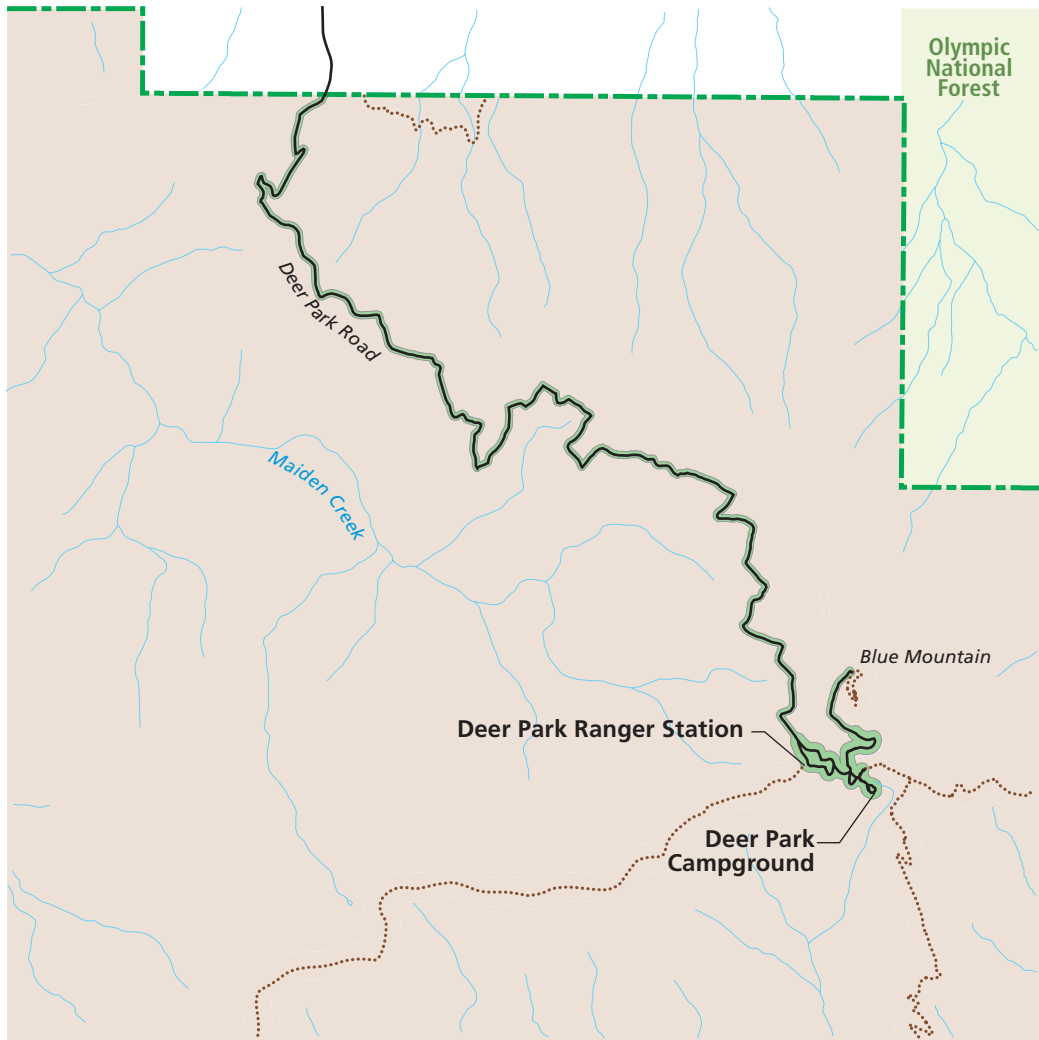


0 1 2 miles

Location



Deer Park Alternative D - Preferred Alternative



- 1. The unpaved road would be retained and open seasonally.
- 2. The ranger station and campground would be open seasonally.

Legend

Low Use Zone	NPS Boundary
NPS Wilderness	Trail
	Paved road
	Unpaved road
	USFS

