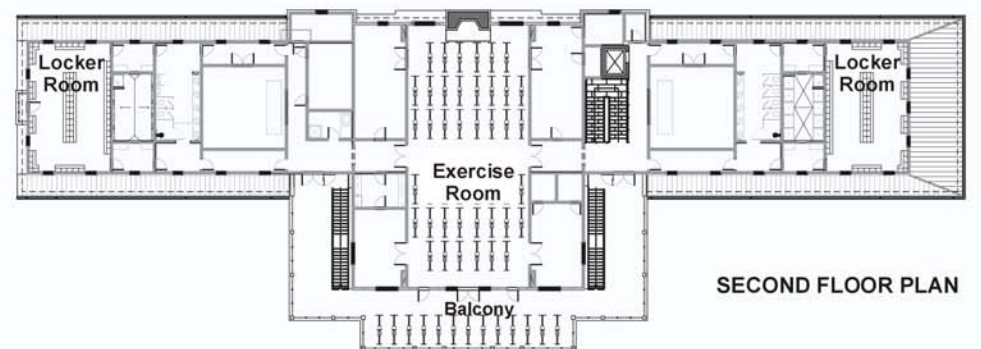
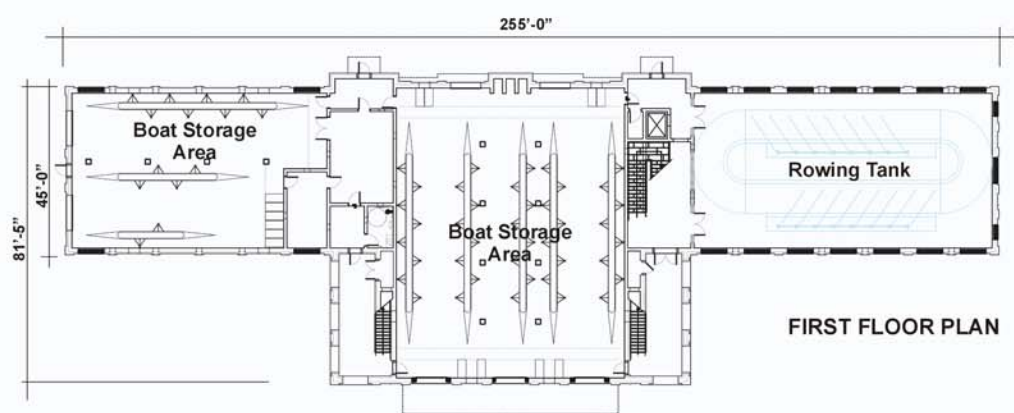
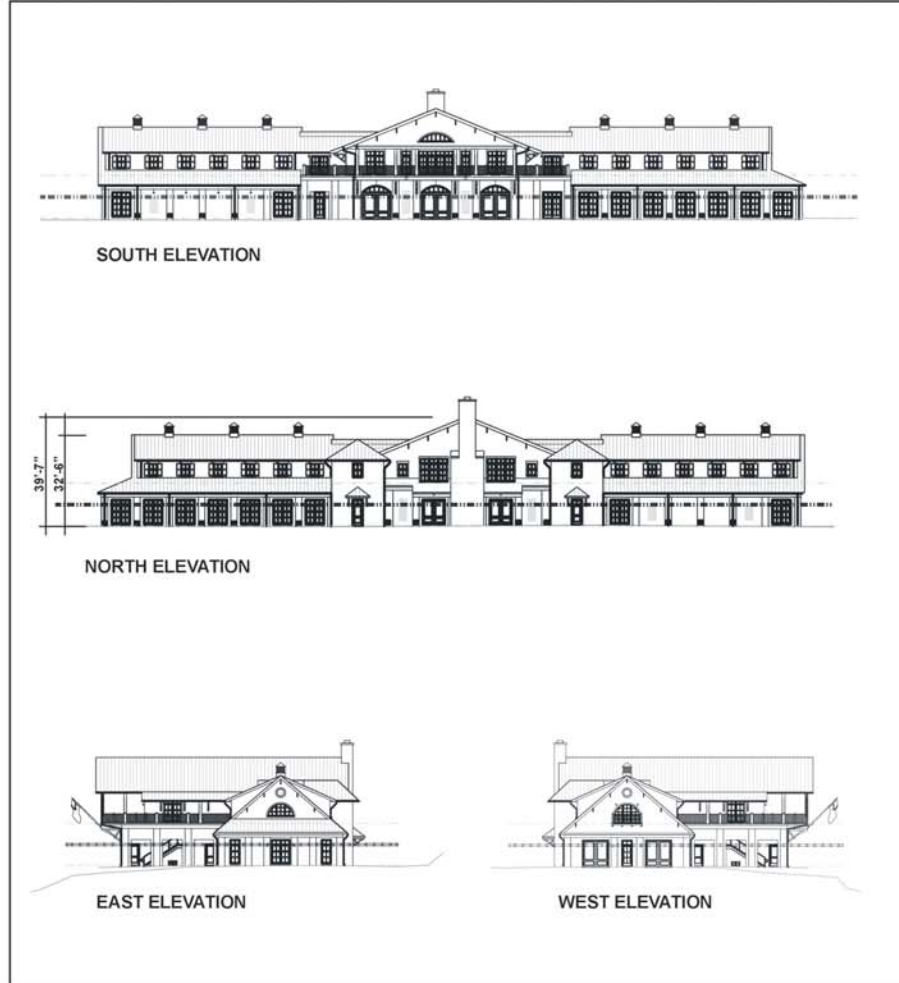
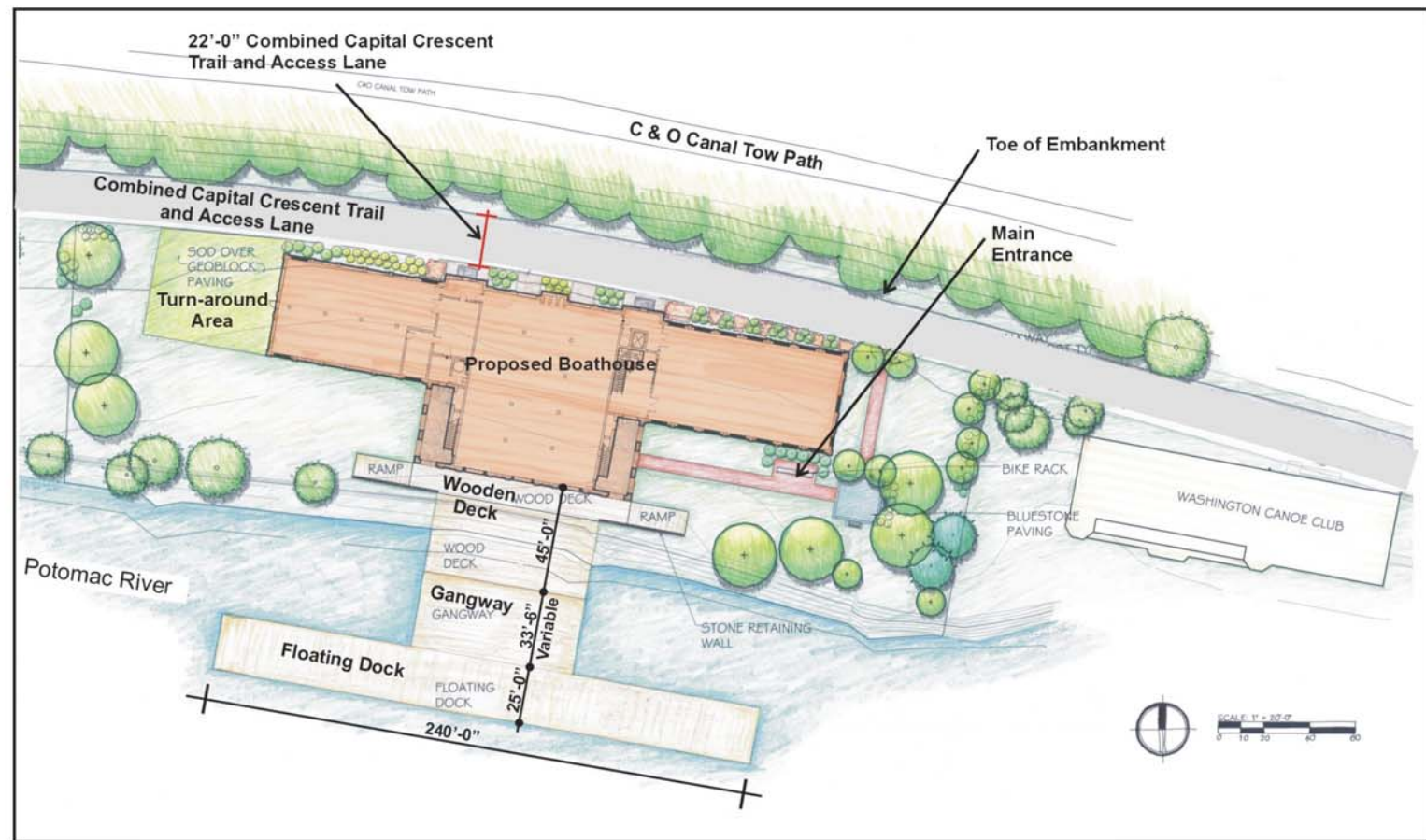
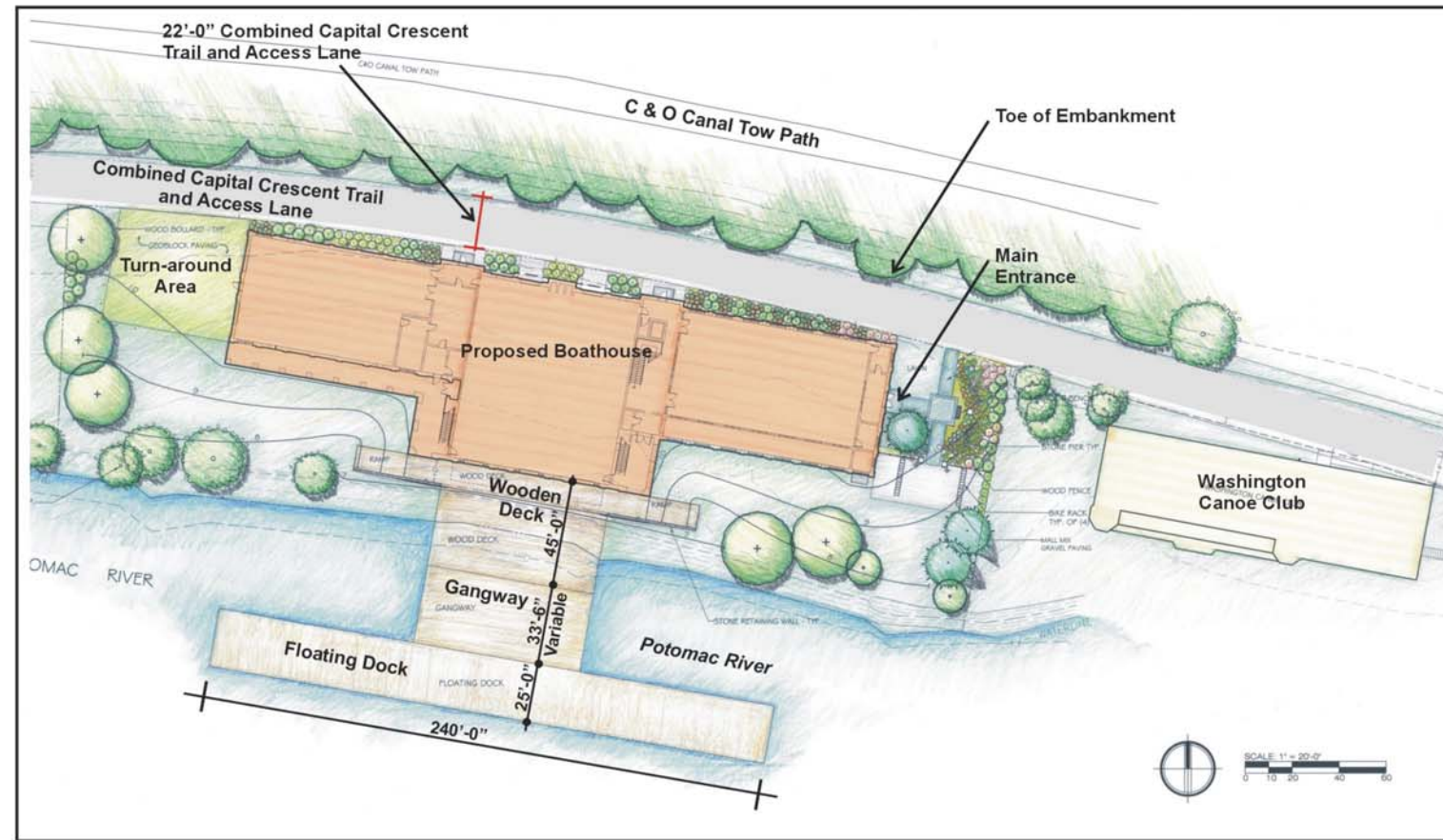


**ALTERNATIVE B - 15,000 SF FOOTPRINT; MAX. HT. = 40 FEET**





**ALTERNATIVE C - 18,682 SF FOOTPRINT; MAX. HT. = 36.5 FEET**



SOUTH ELEVATION



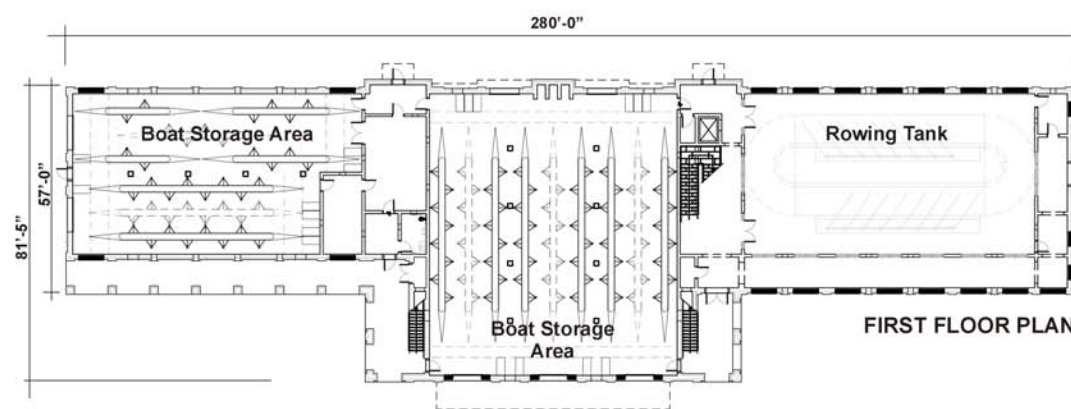
NORTH ELEVATION



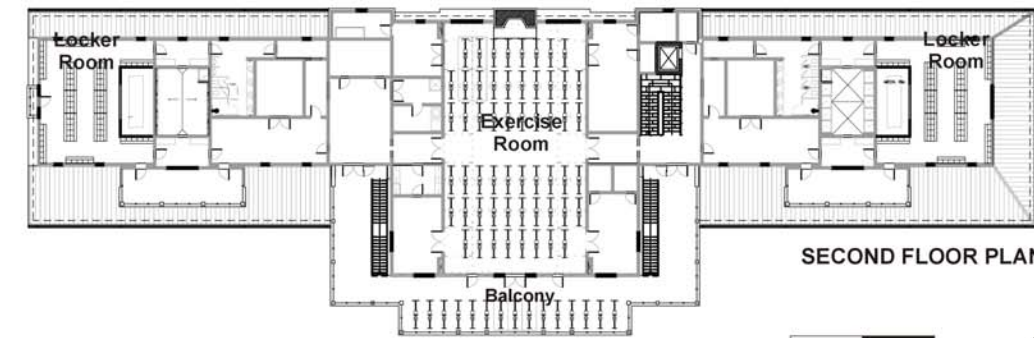
EAST ELEVATION



WEST ELEVATION



FIRST FLOOR PLAN

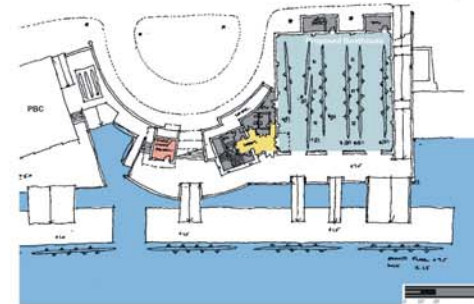
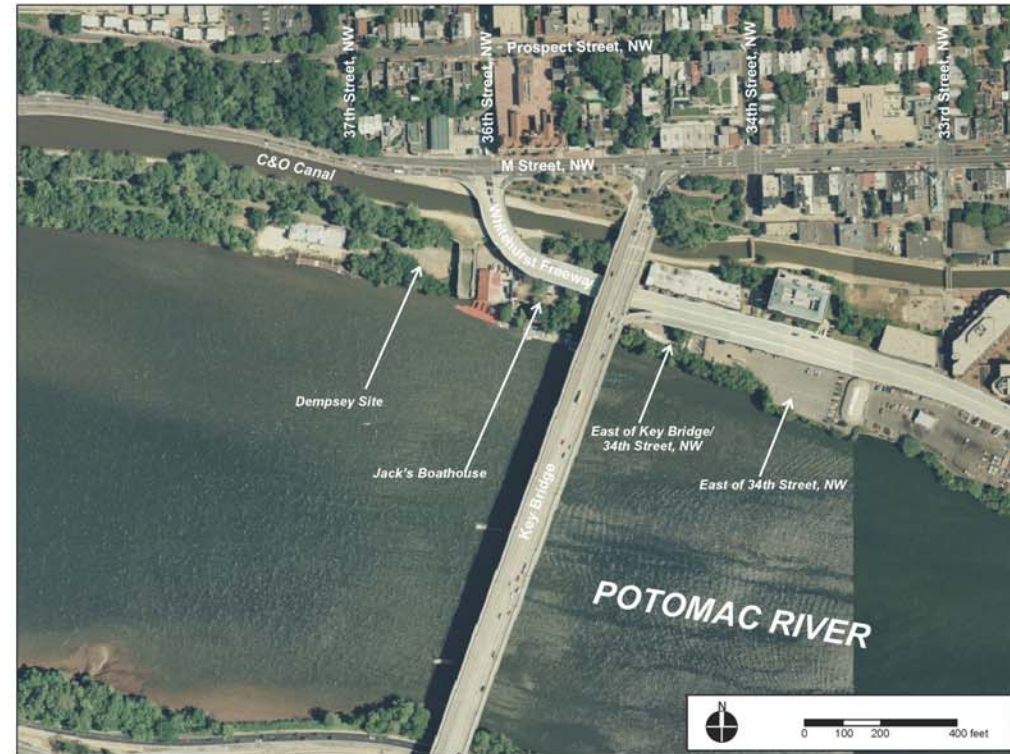


SECOND FLOOR PLAN

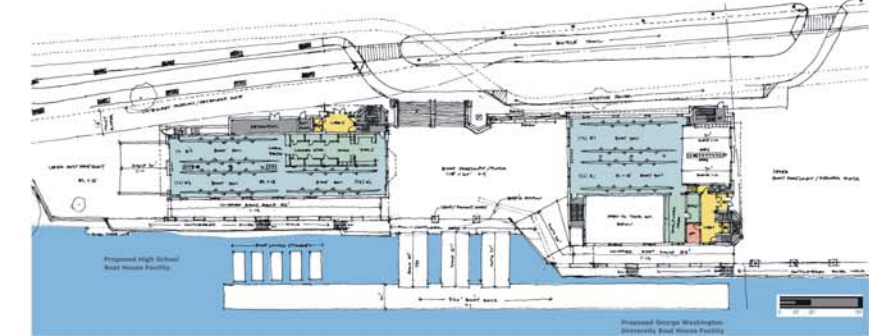




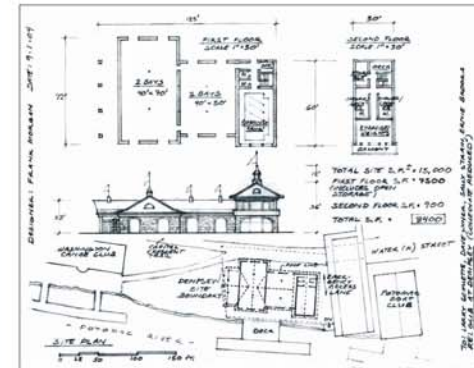
## ALTERNATIVES CONSIDERED BUT REJECTED



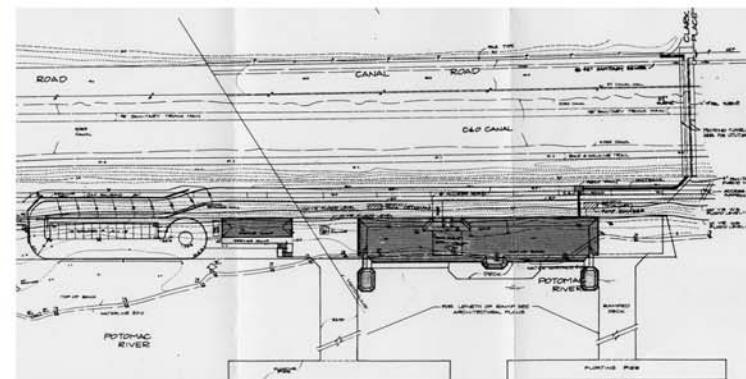
Potential Site Plan for a Boathouse at Jack's



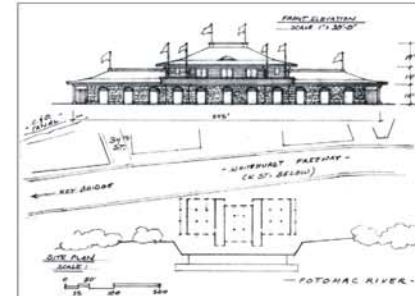
Potential Site Plan for two Boathouses between Key Bridge and 34th Street, NW



Potential Site Plan for a Boathouse at Dempsey's  
Source: Frank Morgan, 2005



Potential Site Plan for a Boathouse at the Upstream Site (Tract 102-109)  
Source: McKissack and McKissack, 1992



Potential Site Plan for a Boathouse east of 34th Street, NW  
Source: Frank Morgan, 2005

## ALTERNATIVES CONSIDERED BUT REJECTED

- Georgetown University Tract 102-109 (Upstream Site)
- Reduced Boathouse Program at the Waterfront Site
- Georgetown Waterfront East of Key Bridge to 34th Street, NW
- Jack's Boathouse
- Dempsey's Site
- East of 34th Street, NW
- Anacostia Waterfront
- Virginia Side on NPS Land
- Adjacent to the Boathouse at Fletcher's Cove
- Expansion of Thompson's Boat Center



National Park Service

**PROPOSED GEORGETOWN BOATHOUSE  
Environmental Assessment**