

National Park Service
U.S. Department of the Interior

West Side Trails Construction



Agenda

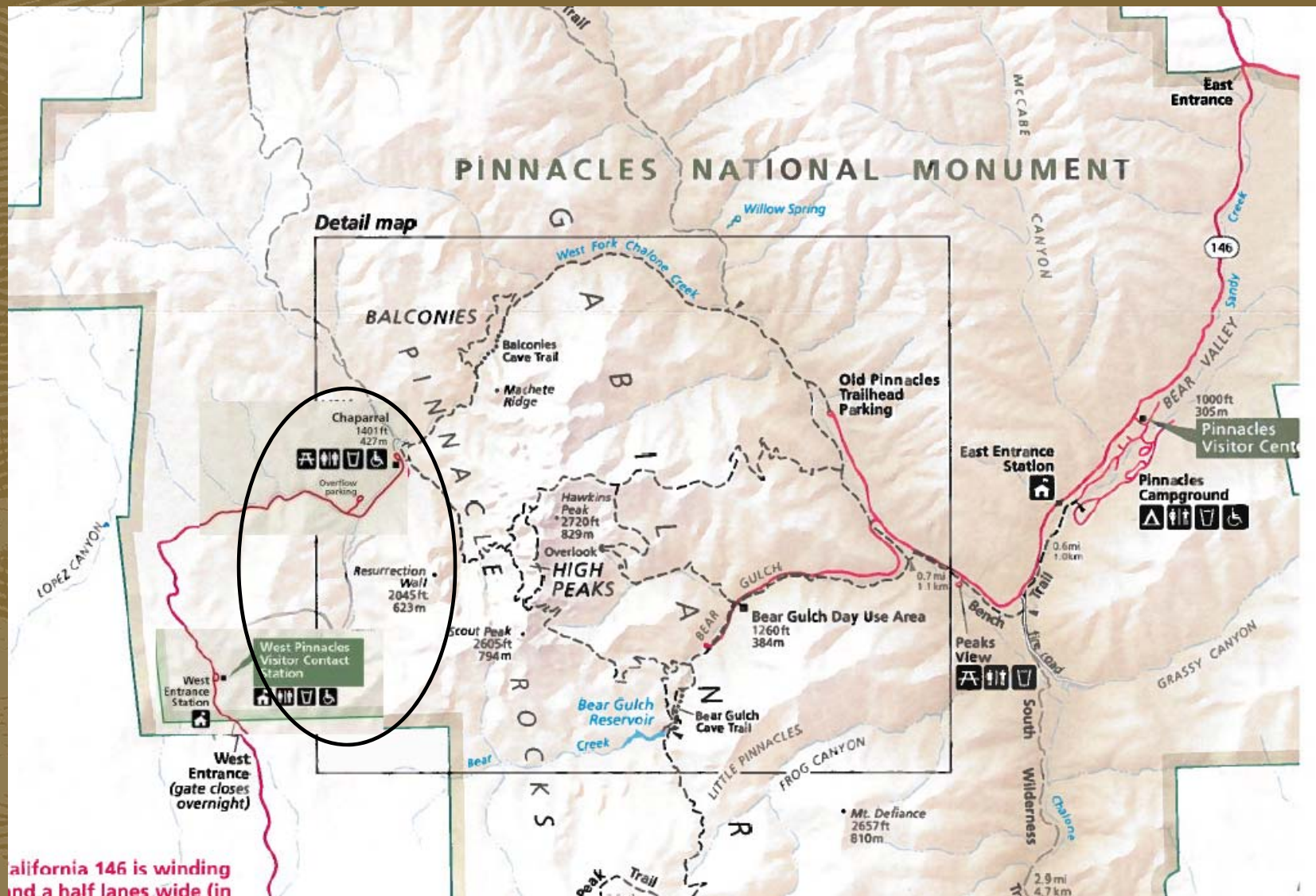
- The project and why it is needed
- Preferred alternative
- Other alternatives
- Environmental impacts
- Project schedule
- Questions and answers



EXPERIENCE YOUR AMERICA

Proposed Action

- Construct a new accessible trail from the West Side Visitor Contact Station (VCS)
- Construct a new trail connecting the VCS to the trailheads at the Chaparral area
- Provide interpretive and wayfinding signage



California 146 is winding
and a half lanes wide (in

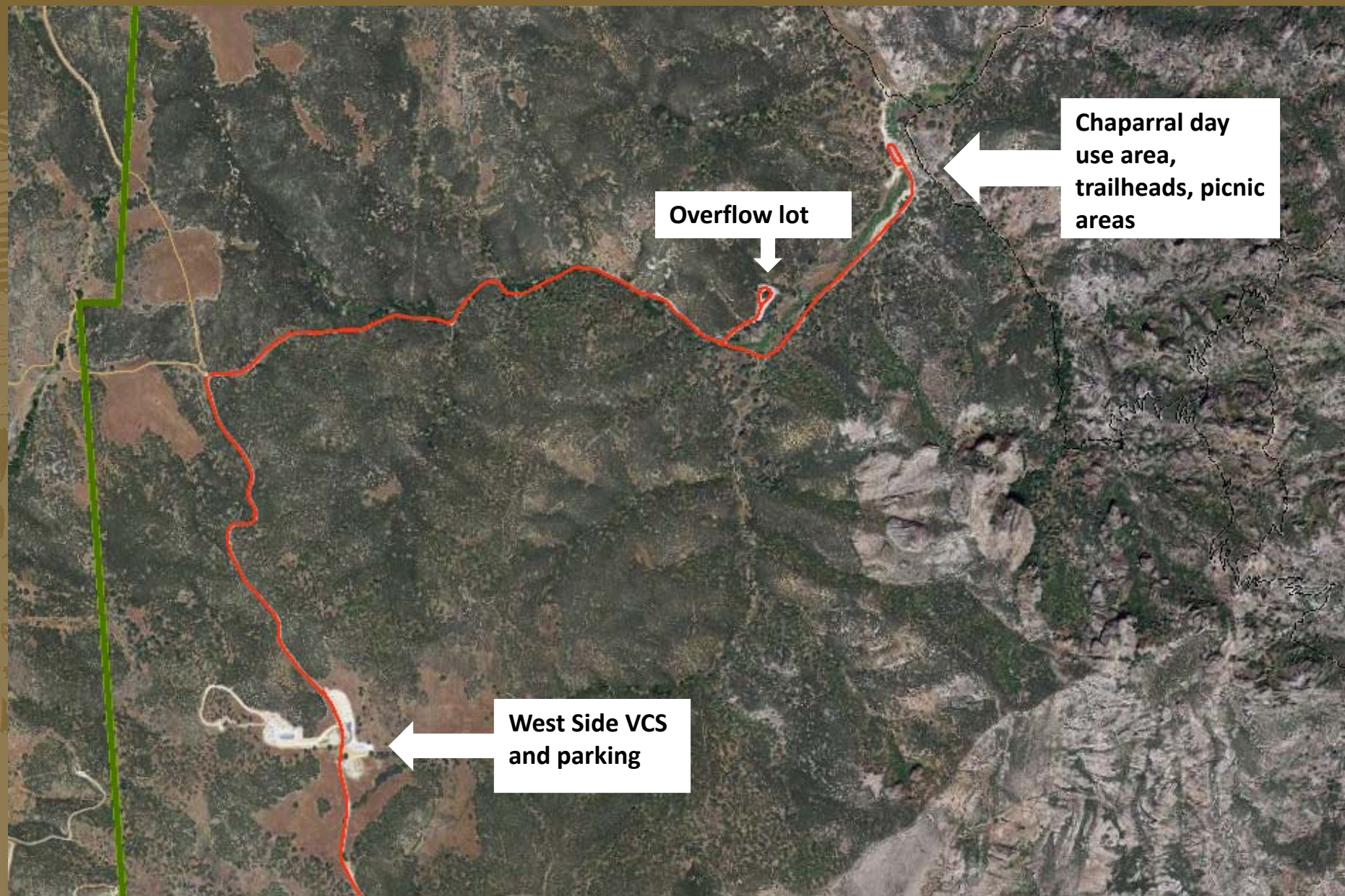
EXPERIENCE YOUR AMERICA

Why are these trails needed?

- No existing trails at VCS
- Resource damage
- No trails from VCS to other west side trailheads, walking road is unsafe
- Lack of accessible trails in park



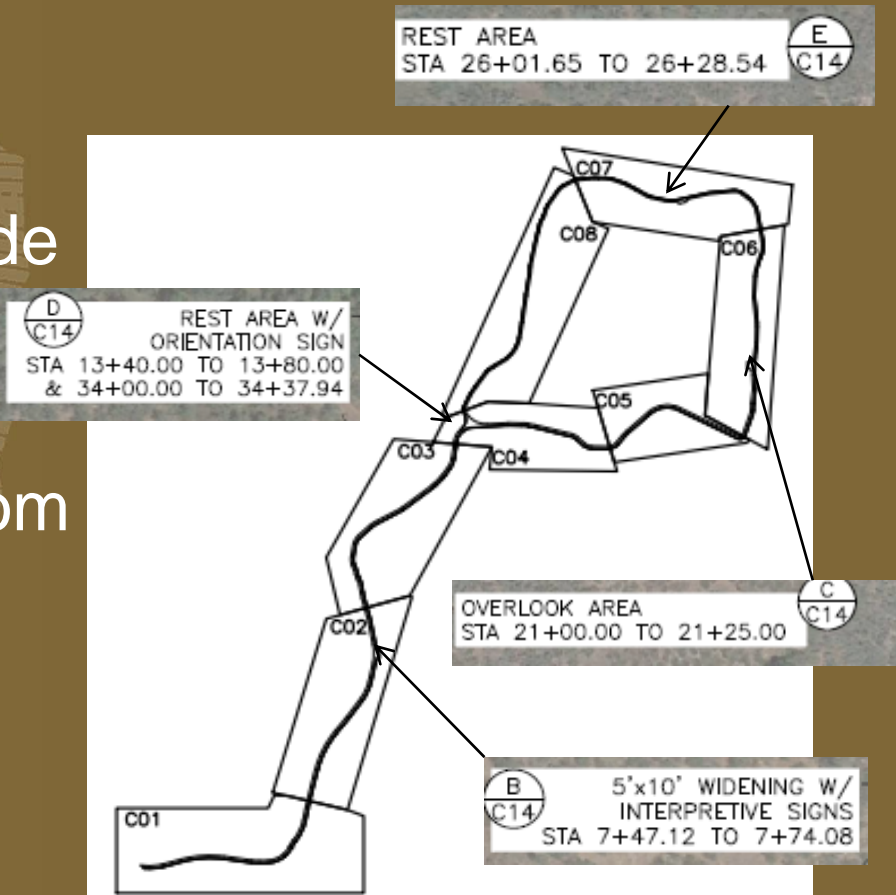
EXPERIENCE YOUR AMERICA



EXPERIENCE YOUR AMERICA

Preferred Accessible Trail

- Lollipop alignment
- .25 mi long (1350 ft.) linear section, 5 feet wide
- .4 mi long (2050 feet) loop, 5 feet wide to overlook, 3 feet wide from overlook to rest area
- Overlook, rest areas, interpretive waysides
- Restore existing social trails

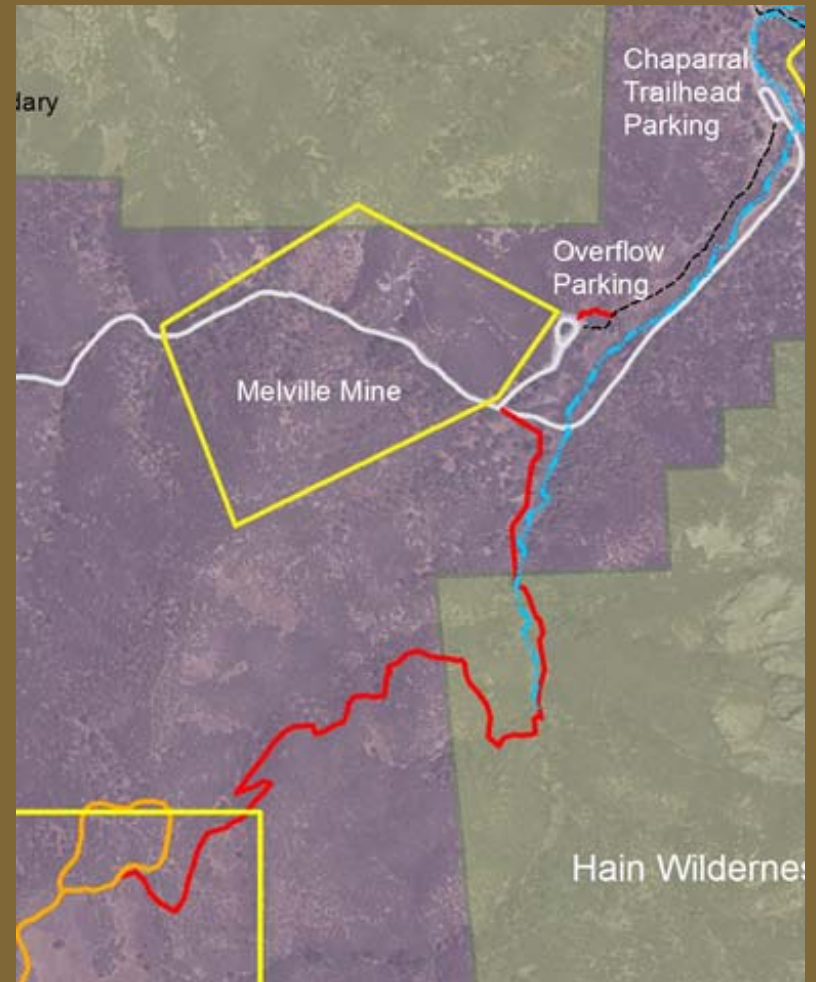




EXPERIENCE YOUR AMERICA

Preferred Connector Trail

- Approximately 1 mile long, 3 feet wide
- 600 feet in elevation change with gradual grades
- From accessible trail to overflow parking lot, then connects to an existing trail to Chaparral and other trailheads
- Great views of views of rock formations and wildflowers



EXPERIENCE YOUR AMERICA



EXPERIENCE YOUR AMERICA



EXPERIENCE YOUR AMERICA

Other Alternatives Considered

- Connector trail alignment on other side of Jawbone Canyon, outside of wilderness
- No Action





Other Alternatives Dismissed

- Improvements at Chaparral area
- Two other connector trail alignments
- Trails in other areas or a larger trail network
- Rock stream crossings



Environmental Impacts

- Geology
- Vegetation
- Wildlife
- Cultural Resources
- Wilderness
- Visitor Resources and Access

Geology

Accessible Trail

- Outsloped and retaining walls to reduce erosion

Preferred Connector

- Connector mostly gradual grades with few short steep areas
- Switchbacks widely spaced and screened

Non-Wilderness Connector

- Connector trail steep for most of trail
- Numerous stacked switchbacks, exposed and hard to screen
- Chance to shortcutting and erosion is great.
- Many more check steps, retaining walls, rock work needed.

Vegetation

- Impacts similar between 2 action alternatives
- Removal of approx. 4 acres of vegetation
- Species common in the park



Wildlife

- Impacts similar between 2 action alts
- Listed park species: California condor, red-legged frog, and tiger salamander
- No habitat = no adverse effects



Cultural Resources

Accessible Trail

- Overlook and portions of trail visible from the Lyons Homestead archeological historical district.

Preferred Connector

- Connector along outer edge of an archeological site
- In proposed historical district

Non-Wilderness Connector

- Connector outside area of cultural and archeological sensitivity

Wilderness

Accessible Trail

- Overlook and portions of trail visible from Wilderness

Preferred Connector

- Largely hidden from views in Wilderness
- 1500 feet of trail constructed within wilderness

Non-Wilderness Connector

- Nearly entire trail is visible from Wilderness
- Open and exposed, little opportunity to hide trail
- Impacts High Peaks integral vista

Visitor Resources and Access

All Alignments

- Substantial benefits to visitors: accessible park experience, opportunities for interpretation/education and new visitor programs, improves visitor safety, provides a connection from VCS to other west side trails.
- Minimal visitor impact during construction
- Some adverse impact to parking availability at VCS lot

Preferred Connector

- Gradual decline through canyon
- Shaded in summer
- Protects views from Wilderness

Non-Wilderness Connector

- Consistently steep for most of trail, many switchbacks
- Exposed to summer sun
- Impacts views from Wilderness

Project Schedule

- April 2016: Public review of EA
- Early May: review public comments
- May/June: Finding of No Significant Impact
- Fall 2016: Construction of accessible trail begins

**Thank you for
your
participation!**

Questions?



EXPERIENCE YOUR AMERICA