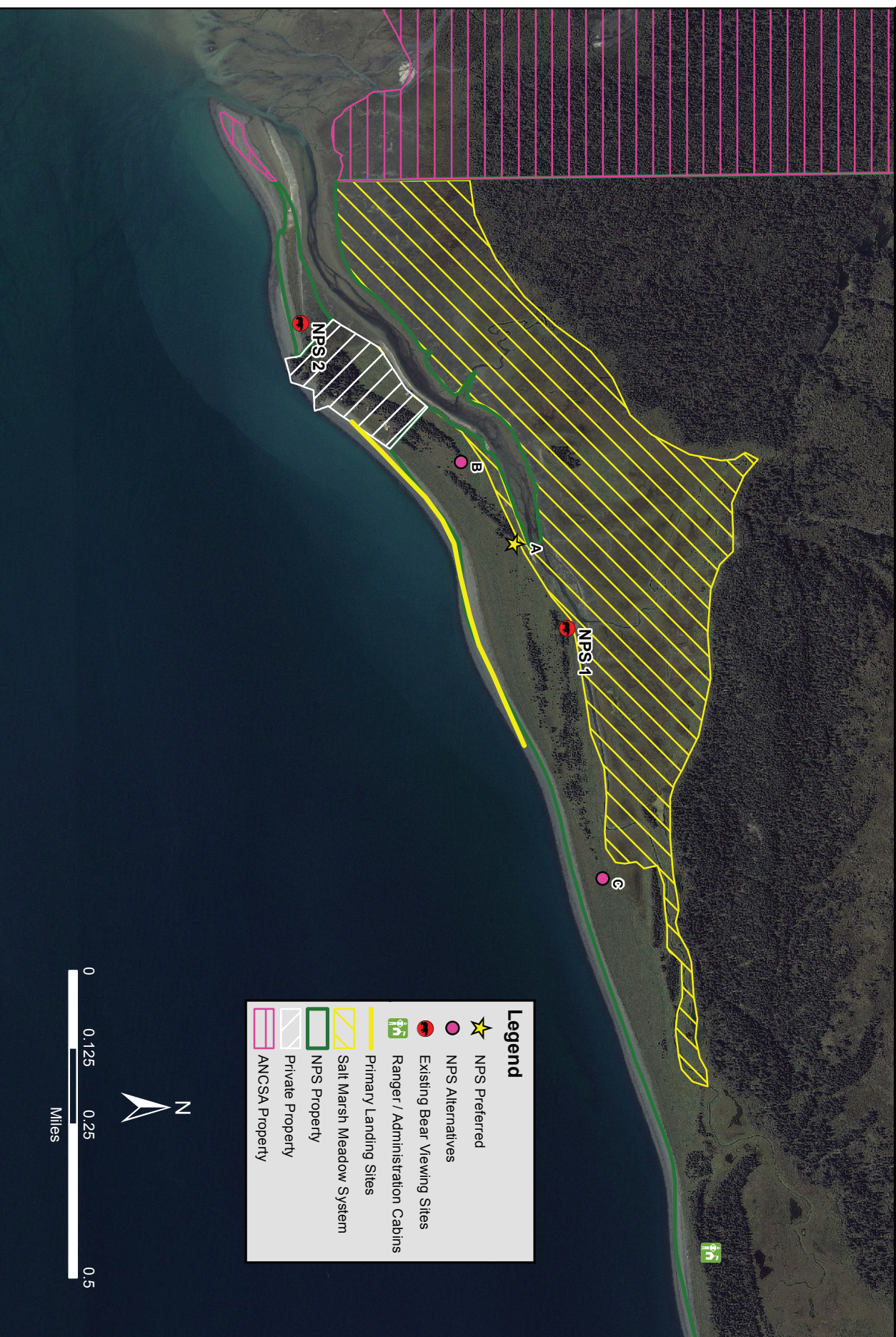


Proposed Chinitna Bay Bear Viewing Sites

Lake Clark National Park and Preserve

**National Park Service
U.S. Department of the Interior**





National Park Service
U.S. Department of the Interior

Lake Clark National Park and Preserve
240 W. 5th Ave., Suite 236
Anchorage, AK 99501

First Class Mail
Postage and Fees
PAID
City, State
Permit number

EXPERIENCE YOUR AMERICA™



National Park Service
U.S. Department of the Interior

The purpose of Lake Clark National Park and Preserve is to protect a region of dynamic geologic and ecological processes that create scenic mountain landscapes, unaltered watersheds supporting Bristol Bay red salmon, and habitats for wilderness dependent populations of fish and wildlife, vital to 10,000 years of human history.

Lake Clark National Park and Preserve
240 W. 5th Ave., Suite 236
Anchorage, AK 99501

<http://www.nps.gov/lacl/index.htm>

Phone
(907) 644-3626

Project Website
<http://parkplanning.nps.gov/ChinitnaBayBearViewing>

The National Park Service cares for the special places saved by the American people so that all may experience our heritage.

Dear Friends and Interested Parties,

Over the last three years the numbers of park visitor's bear viewing at Chinitna Bay in Lake Clark National Park has nearly tripled. All NPS bear viewing with guides in Chinitna Bay on NPS lands is permitted at two designated bear viewing areas. The NPS is considering a request from a Commercial Use Operator (CUA) guide service to add an additional bear viewing area at Chinitna Bay.

Per the current CUA's stipulations, a maximum of 15 persons may occupy each bear viewing area at any one time. Unguided park visitors are also encouraged to utilize the same viewing areas and trail access as the CUA operators to improve safety and limit disturbing the bears.

Park staff evaluated three potential bear viewing areas at Chinitna Bay. Access to the viewing areas would continue to be from the beach and travel between sites would not be permitted for visitor safety. safe approach from the beach and areas that are not visible from other viewing areas the NPS preferred location is identified as "A" on the map attached.

Please see the enclosed map of the bear viewing areas (current and proposed) at Chinitna Bay.

Margaret L. Goodro

*Superintendent
Lake Clark National Park and Preserve*