

APPENDIX C: ASSESSMENT OF EFFECTS

KENNEDY CENTER EXPANSION CONNECTION PROJECT

Section 106 Assessment of Effects



Prepared by
ROBINSON & ASSOCIATES, INC.

February 18, 2016

TABLE OF CONTENTS

1.0 INTRODUCTION.....	2
1.1 Purpose.....	2
1.2 Project Background.....	6
1.3 Section 106 Consultation Overview.....	7
2.0 IDENTIFICATION OF HISTORIC PROPERTIES.....	8
2.1 Area of Potential Effects.....	8
2.2 Identification of Resources.....	8
3.0 ASSESSMENT OF EFFECTS.....	19
3.1 Methodology.....	19
3.2 Description of Alternatives.....	19
3.3 Effects Assessment.....	26
4.0 CONCLUSION.....	48
5.0 BIBLIOGRAPHY.....	50
APPENDIX	

1.0 INTRODUCTION

1.1 Purpose

The John F. Kennedy Center for the Performing Arts (Kennedy Center), located along the Potomac River at the western edge of the District's monumental core, is a congressionally designated national showcase for the performing arts and a living memorial to President Kennedy. It was determined eligible for the National Register of Historic Places on February 13, 2012, for its association with President Kennedy and as the work of master architect Edward Durell Stone. Attracting more than two million visitors annually, the Kennedy Center presents musical, dance, and theatrical performances, supports artists in the creation of new work, and serves the nation as a leader in arts and arts management education. Due to a critical shortage of dedicated spaces to serve its existing and expanding programs, the Kennedy Center is expanding its facilities through the construction of three land-based pavilions south of the existing building. The National Capital Planning Commission (NCPC) approved the Kennedy Center Expansion Project design for the land-based pavilions in July 2015.

Located at 2700 F Street, NW, the Kennedy Center is situated on an eminent site overlooking the Potomac River. The Rock Creek and Potomac Parkway and the Rock Creek Paved Recreation Trail parallel the Potomac River and Rock Creek from the Lincoln Memorial to the junction of the Rock Creek and Potomac Parkway and Beach Drive. (From this point, the Rock Creek Paved Recreation Trail, known as the Rock Creek Trail, continues north through Rock Creek Park.) Currently, there is no direct connection between the Kennedy Center and the Rock Creek Paved Recreation Trail along the Potomac River waterfront. (See Figure 1 through Figure 4 for existing conditions images.) The proposed Kennedy Center Expansion Connection Project would provide a safe pedestrian and bicycle connection between the Kennedy Center and the Rock Creek Paved Recreation Trail while creating a public waterfront link to and from the Kennedy Center, the National Mall and Memorial Parks, the Potomac River waterfront, and the surrounding vicinity.

The Kennedy Center is operated as a public and private partnership and receives federal funding each year to pay for the maintenance and operation of the building. The NCPC and the National Park Service (NPS) are acting as co-lead agencies in cooperation with the Kennedy Center to fulfill the requirements of Section 106 of the National Historic Preservation Act for the proposed Kennedy Center Expansion Connection Project. The proposed connection would be located on a site bounded by Virginia Avenue, NW, to the north, the Kennedy Center on the east, the Potomac Expressway and ramp to Roosevelt Bridge on the southeast, and the Potomac River on the west. This project area partially falls within the Rock Creek and Potomac Parkway, which, in this area, is under the jurisdiction of the National Mall and Memorial Parks, a unit of the NPS. (See Figure 5 for a map illustrating the project area.) NCPC is reviewing the project under its authorities specified in the National Capital Planning Act, and an approval action by NCPC is considered an undertaking subject to Section 106.

In accordance with the National Environmental Policy Act (NEPA), the NPS and NCPC are preparing an Environmental Assessment (EA) to identify alternatives and assess the potential impacts of the proposed

Kennedy Center Expansion Connection Project. The EA includes five alternatives for the proposed project:

- No Action
- At-Grade Crossing Access
- Bridge Access with Ramp and Stairs
- Bridge Access with Ramp and Elevator
- River Terrace Access

In accordance with Section 106 of the National Historic Preservation Act of 1966 (54 U.S.C. 306108) and its implementing regulations (36 CFR Part 800), the NCPC and NPS in cooperation with the Kennedy Center must take into account the effects of the Expansion Connection Project on historic properties. The purpose of this Assessment of Effects report is to identify the historic properties within an area of potential effects (36 CFR 800.4), evaluate the potential effects of the proposed alternatives on historic properties, and apply the criteria of adverse effect (36 CFR 800.5) to determine if the proposed undertaking may directly or indirectly alter any characteristics of a historic property in a manner that would diminish its integrity. The analysis presented in this report will be used as a basis for consultation between the NPS, NCPC, Kennedy Center, D.C. Historic Preservation Office (DCHPO), the Virginia State Historic Preservation Office (VASHPO), and other consulting parties concerning the effects of the proposed undertaking on historic properties. The information gathered in this Section 106 Assessment of Effects report will be incorporated into the NEPA EA.



Figure 1: Aerial image of the project area.



Figure 2: View of project area looking northeast from the Theodore Roosevelt Memorial Bridge.



Figure 3: West side of the project area looking north from Theodore Roosevelt Memorial Bridge over the Rock Creek and Potomac Parkway and the Rock Creek Paved Recreation Trail.



Figure 4: South end of the project area looking north along the Rock Creek Paved Recreation Trail.

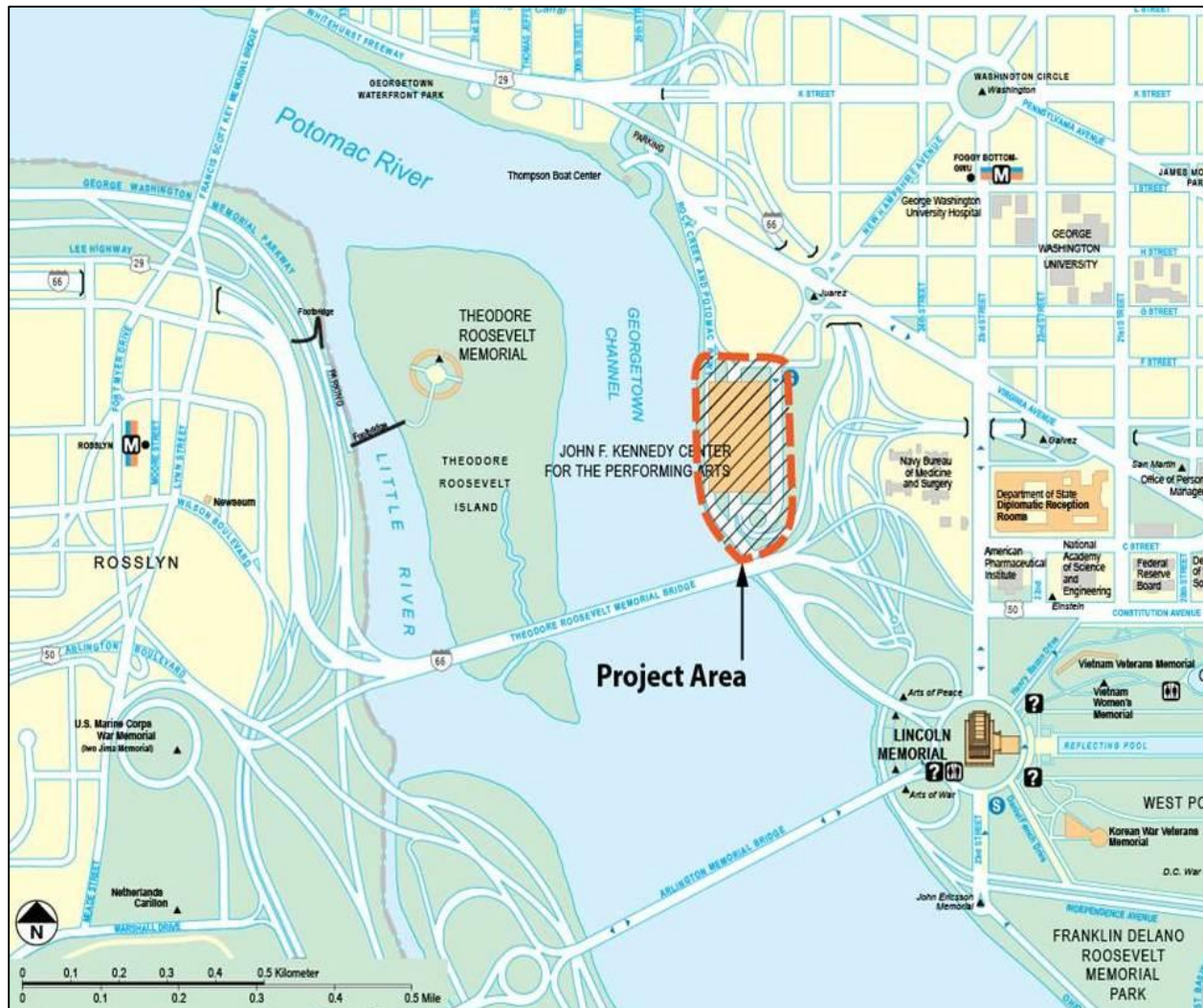


Figure 5: Project Area Map

1.2 Project Background

The Kennedy Center Expansion Connection Project proposes to provide a safe pedestrian and bicycle connection between the Kennedy Center and the Rock Creek Paved Recreation Trail and a public waterfront link to and from the Kennedy Center. In recent years, several proposals for such a connection have been considered. In 2011, a draft Section 106 Assessment of Effects report was prepared for the Kennedy Center Pedestrian Access Improvement Project that evaluated two action alternatives proposing connections from the Kennedy Center River Terrace. This project was put on hold, and Section 106 consultation was discontinued. In July 2014, an Assessment of Effects report was prepared for the Kennedy Center Expansion Project. One of the alternatives considered for this project included a River Pavilion, which would have been accessed either by a bridge or by an at-grade crossing over the Rock Creek and Potomac Parkway. Ultimately, the Kennedy Center chose not to pursue the River Pavilion alternative for the Expansion Project. Instead, the Kennedy Center is expanding its facilities

through the construction of three land-based pavilions, the design for which was approved by the NCPC in July 2015.

1.3 Section 106 Consultation Overview

Section 106 review and NEPA are being coordinated for the Kennedy Center Expansion Connection Project. The NPS and NCPC are preparing an EA to identify alternatives and assess the potential impacts of the project. Concurrently, the agencies are conducting consultation under Section 106 of the NHPA, which was initiated with the DCHPO on November 9, 2015, and with the VASHPO on February 17, 2016. A joint NEPA/Section 106 public scoping meeting was held on September 29, 2015, during which the consulting parties were introduced to the project, presented with a draft area of potential effects, and invited to comment on the proposal. A 30-day public comment period was open from September 15 to October 15, 2015. A second consulting parties meeting occurred on December 10, 2015, to present the proposed alternatives to the public and invite comment on the potential effects of the undertaking. A final consulting parties meeting will be held on February 23, 2016, to further discuss the effects of the undertaking and to solicit input into ways to avoid, minimize, or mitigate adverse effects. The NPS's Planning, Environment, and Public Comment (PEPC) website is being used as a tool to disseminate information on the project and collect public comment.

2.0 IDENTIFICATION OF HISTORIC PROPERTIES

2.1 Area of Potential Effects

The area of potential effects (APE), as defined in 36 CFR Part 800.16, for the Kennedy Center Expansion Connection Project was identified by NPS and NCPC through consultation with the DCHPO, the VASHPO, and other consulting parties. The APE encompasses areas in the District of Columbia and Virginia from which the project site is readily visible and includes cultural resources that could potentially be directly or indirectly affected by the undertaking or affected by changes in the character of the site. The APE boundaries are roughly the Whitehurst Freeway and Virginia Avenue, NW, on the north; New Hampshire Avenue, NW, the east facade of the Kennedy Center, the Terminus of Rock Creek and Potomac Parkway, and Ohio Drive on the east; the Arlington Memorial Bridge and Memorial Avenue on the south; and the George Washington Memorial Parkway (GWMP) and Francis Scott Key Bridge on the west. (See Figure 6.)

2.2 Identification of Resources

An historic property is defined as any prehistoric or historic district, site, building, structure, or object included in, or eligible for inclusion in, the National Register of Historic Places (NRHP). The NPS categorizes their cultural resources as archeological resources, cultural landscapes, historic districts and structures, museum objects, and ethnographic resources.

The list of historic properties and cultural resources within the APE for the Kennedy Center Expansion Connection Project was compiled based on a review of existing documentation and through consultation with the DCHPO, the VASHPO, and other consulting parties. Resource types include properties in the District of Columbia Inventory of Historic Places and the Virginia Landmarks Register; properties, districts, and cultural landscapes listed in or determined eligible for listing in the NRHP; and National Historic Landmarks.

Section 106 requires coordination with federally recognized Indian tribes who may have potential religious or cultural interests in the project area and acknowledges that tribes may have interest in geographic locations other than their seat of government. As such, on October 28, 2013, the Delaware Nation was invited to participate in the Section 106 consultation for the Kennedy Center Expansion Project. The NPS, NCPC, and Kennedy Center met with the Delaware Nation on November 25, 2013, to discuss the project, at which time the Delaware Nation expressed interest in the archeological potential of the project area. Subsequently, Phase 1A archaeological investigations for the Kennedy Center Expansion Project were carried out that determined that no known American Indian traditional cultural properties existed within the study area.¹ A copy of the Phase 1A archaeological report was submitted to the Delaware Nation on May 7, 2014. The tribe responded on October 24, 2014, that the project area was not in the “area of interest” for the Delaware Nation. The Kennedy Center Expansion Connection

¹ Stantec, “Phase 1A Archeological Investigations Conducted for the John F. Kennedy Center for the Performing Arts Expansion Project in Washington, D.C.,” March 2014.

Project is in the same area as the Kennedy Center Expansion Project and as such is also outside the area of interest of the Delaware Nation.

As previously noted, in 2014, Phase 1A archaeological investigations were conducted for the Kennedy Center Expansion Project. Based on those investigations, all excavations associated with the Kennedy Center Expansion Connection Project, as currently proposed, would be limited to fill deposits and are not expected to impact archaeological resources. However, if construction excavations continue to the depth of fill or below, geoarchaeological investigations would be conducted to determine whether intact land surfaces are present below fill. If such land surfaces are present and would be impacted by construction of the Kennedy Center Expansion Connection Project, a program of archaeological investigations to identify, evaluate, and mitigate any adverse effects to archaeological resources present should be implemented. (The project is not expected to impact archeological resources; therefore, they were dismissed as an impact topic in the EA.)

The APE includes the following historic properties and cultural resources: the Kennedy Center, the Georgetown Historic District, the East and West Potomac Parks Historic District, Rock Creek and Potomac Parkway, the Watergate Complex, the Lincoln Memorial Grounds, Arlington Memorial Bridge and related features, the Memorial Avenue Corridor, Lady Bird Johnson Park, the GWMP, and Theodore Roosevelt Island. These sites have been extensively documented; therefore, additional survey requirements on potentially affected historic resources are not anticipated. (See Figure 6 for a map identifying the locations of the historic resources within the APE.) The historic properties and cultural resources within the APE for the Kennedy Center Expansion Connection Project are described below.

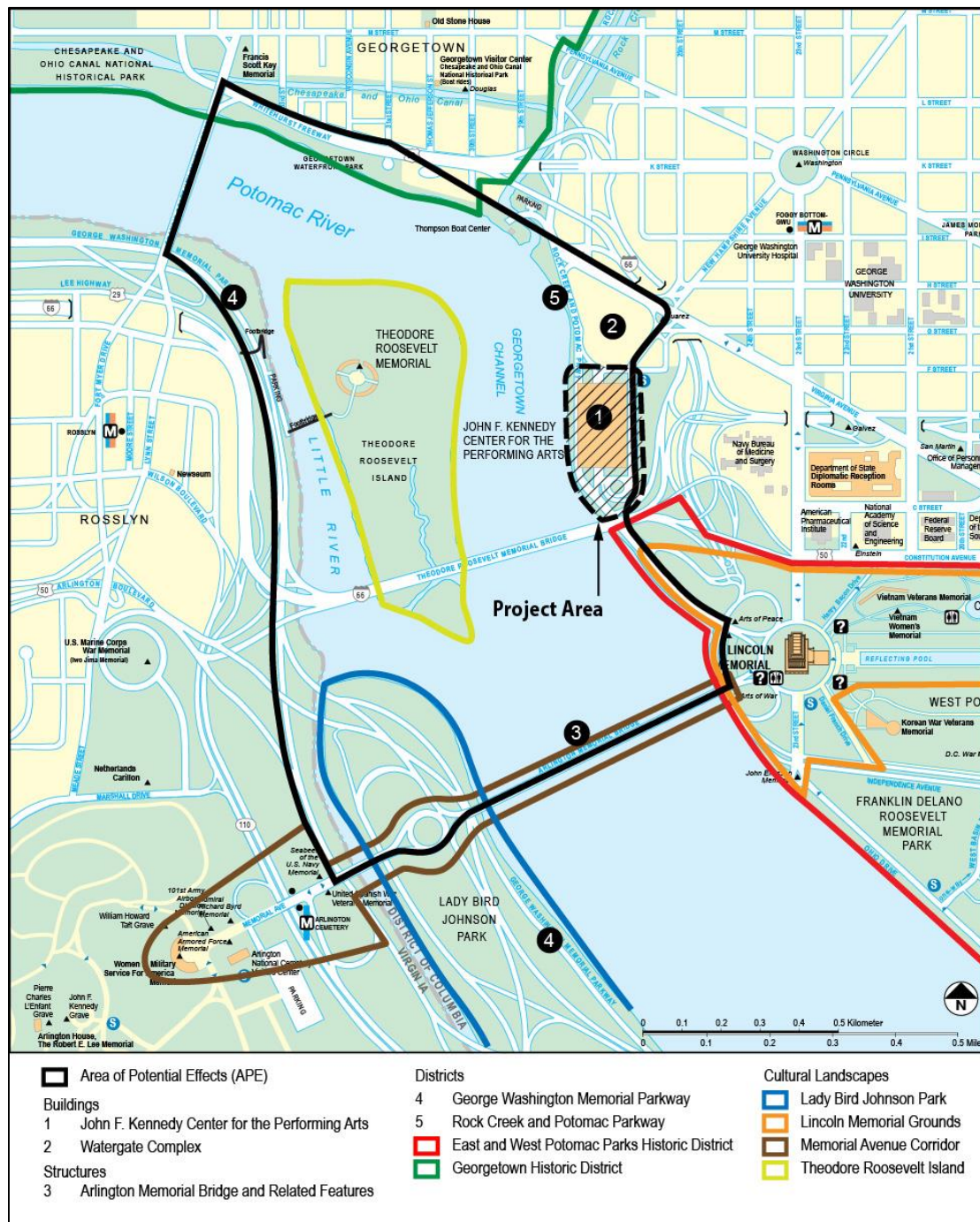


Figure 6: Area of Potential Effects and Resources

2.2.1 Arlington Memorial Bridge and Related Features

Spanning the Potomac River at the western terminus of the Mall composition, the Arlington Memorial Bridge was authorized by Congress in 1916 and constructed between 1926 and 1932. It is built of reinforced concrete faced with granite. The bridge complex was designed by McKim, Mead & White in the Neoclassical style and features sculptural elements by artists Alexander P. Proctor, Carl Paul Jennewein, and Leo Friedlander. The southern terminus of the Rock Creek and Potomac Parkway was constructed concurrently with the bridge and enters the Lincoln Memorial Circle at the northwest. The area between the parkway terminus and the bridge is the Watergate, a broad flight of steps leading to the water that serves as a ceremonial river entrance to the city. At its western end, the Arlington Memorial Bridge complex includes Columbia Plaza, the circular plaza on Columbia Island; the Boundary Channel Bridge, which connects Columbia Island with the Virginia shore; and Memorial Avenue and Hemicycle, the ceremonial entrance to Arlington National Cemetery.² By connecting the Lincoln Memorial with the Arlington House, The Robert E. Lee Memorial, the Arlington Memorial Bridge represents a symbolic link between the North and the South. The bridge and its associated architectural, engineering, sculptural, and landscape features are significant as important elements in the early twentieth-century Beaux Arts urban design of the National Capital. The Arlington Memorial Bridge and related features (including the Watergate, Rock Creek and Potomac Parkway Terminus, Columbia Plaza, Boundary Channel Bridge, and Memorial Avenue and Hemicycle) were listed in the D.C. Inventory of Historic Sites on November 8, 1964, and in the NRHP on April 4, 1980.³

2.2.2 East and West Potomac Parks Historic District

The East and West Potomac Parks Historic District encompasses approximately 730 acres of parkland, including a large portion of the District's monumental core. Situated roughly between the Potomac River and the grounds of the Washington Monument, the East and West Potomac Parks Historic District is characterized by broad expanses of open space framed by mature landscape plantings and views of major memorials that have become part of the American collective memory. The parks provide the setting for nationally recognized memorials such as the Lincoln Memorial and Reflecting Pool, the Thomas Jefferson Memorial, the Franklin Delano Roosevelt Memorial, and the Vietnam Veterans and Women's Memorials, among others. The large land masses that are today East and West Potomac Parks were sculpted from tidal flats by the U.S. Army Corps of Engineers in an ambitious reclamation project that lasted over thirty years. The reclaimed land became parkland that has been shaped by a number of

² For the purpose of this report, the list of resources associated with the Arlington Memorial Bridge is taken from the National Register of Historic Places nomination form. It should be noted, however, that several resources are now known by other names. Columbia Island was renamed Lady Bird Johnson Park in 1967. Memorial Circle and its surrounding landscape encompasses what was previously called Columbia Plaza. Boundary Channel Bridge is now called Memorial Avenue Bridge. See National Park Service, Cultural Landscapes Inventory, "Memorial Avenue Corridor, George Washington Memorial Parkway," 2004 (revised 2009).

³ Barry Mackintosh, National Register of Historic Places Nomination Form, "Arlington Memorial Bridge and related features," 4 April 1980, and "District of Columbia Inventory of Historic Sites," Alphabetic Version dated 30 September 2009.

development plans – most notably the Senate Park Commission (McMillan) Plan of 1901-02, the nation's first major manifestation of the City Beautiful movement. The East and West Potomac Parks Historic District includes three contributing buildings, eleven contributing sites, eleven contributing structures, and ten contributing objects. The East and West Potomac Parks Historic District was listed in the D.C. Inventory of Historic Sites on November 8, 1964, and in the NRHP on November 30, 1973 (revised 2001).⁴

2.2.3 George Washington Memorial Parkway

The GWMP is a national parkway of over 7,000 acres traversed by a planned and landscaped roadway system that extends 38.3 miles along the Potomac River through the District of Columbia, Virginia, and Maryland. Initially conceived as a memorial to George Washington, the parkway was authorized by Congress in 1928, with construction starting in 1929. The parkway serves as a grand entryway to the nation's capital and preserves the Potomac River and its watersheds. The parkway comprises twenty-seven sites replete with natural and cultural resources. While some of these sites were included in the original parkway authorization, others such as Theodore Roosevelt Island and the Arlington House, The Robert E. Lee Memorial were separately legislated and incorporated. Approximately nine million visitors use the parks of the GWMP annually, including the national and international monuments and memorials, natural and recreational areas, trails, a living history farm, historic homes, and an arts and crafts park. These sites, while each possessing a distinct history and individual merits, are united by the parkway and together represent broad themes in the nation's history. The GWMP was listed in the Virginia Landmarks Register on October 8, 1981, and in the NRHP on June 2, 1995.⁵

2.2.4 Georgetown Historic District

Established by the Old Georgetown Act of September 22, 1950, the Georgetown Historic District represents a remarkably intact example of a complete historic town. The historic district encompasses approximately 340 contributing buildings dating from the period of significance, which extends nearly 200 years from 1751 to 1950. Building stock dates from several historical periods, including Early Georgetown (1751-1829), when the area flourished as a tobacco port town and shipping center; Early to Mid-Victorian Georgetown (1830-1869), when extensive industrial and commercial growth occurred along the waterfront; Late Victorian Georgetown (1870-1899), the period following the consolidation of Georgetown into the city of Washington when vast infrastructure improvements were made; and Early Twentieth Century Georgetown (1900-1949), which saw the first housing restoration efforts and culminated in the passage of the Old Georgetown Act. The district includes representative samples of residential, commercial, institutional, and industrial buildings from all periods and contains many of the city's oldest buildings. The Georgetown Historic District was listed in the D.C. Inventory of Historic Sites

⁴ Robinson & Associates, National Register of Historic Places Registration Form, "East and West Potomac Parks Historic District," 11 November 2001.

⁵ Jere L. Krakow, National Register of Historic Places Registration Form, "George Washington Memorial Parkway," 2 June 1995, and "District of Columbia Inventory of Historic Sites," Alphabetic Version dated 30 September 2009.

on November 8, 1964, and designated a National Historic Landmark and listed in the NRHP on May 28, 1967 (amended 2003).⁶

2.2.5 John F. Kennedy Center for the Performing Arts

The Kennedy Center has the unique distinction of serving as both a national performing arts center and as the only presidential memorial to John F. Kennedy in the Nation's Capital. It is situated on an eminent site overlooking the Potomac River at the western edge of the District's monumental core. The Kennedy Center is one of the nation's busiest arts facilities, producing and presenting a wide variety of performances and leading the nation in arts education and accessibility. It was designed by twentieth-century master architect Edward Durell Stone and was constructed between 1964 and 1971. The Kennedy Center possesses exceptional significance as the sole national memorial to President John F. Kennedy within the National Capital and its environs. The Kennedy Center also possesses exceptional significance as an important example of the work of Edward Durell Stone, a nationally recognized architect of the Modern Movement, and as a public monument to President John F. Kennedy that is immediately recognizable as one of the nation's most iconic memorials. The Kennedy Center was determined eligible for the NRHP by the DCHPO on February 13, 2012.⁷

Character-defining features of the Kennedy Center include intangible attributes of the building's aesthetic composition such as its bilateral symmetry; long, low horizontality; hierarchical facades; and clear, geometric form. Exterior contributing features include the thin-clad marble curtain walls; the size and location of the plaza-level glass curtain walls on the west facade; the roof overhang and marble-paneled fascia; the exterior columns (including the Roof Terrace columns); the stage access doors; the bronze wall signage; the engraved quotations on the west facade; the West Terrace footprint and cantilevered structure; the marble panels of the north, west, and south fascia of the West Terrace overhang; the shape and location of the planting boxes and water features of the West Terrace; the West Terrace perimeter wall plantings; the vertical paired openings on the north, south, and center bays of the east facade; the size and location of the Entrance Plaza water features; the Entrance Plaza public art including *Don Quixote*, *From Columbia to John F. Kennedy*, and *America and War and Peace*; the size and location of the glass curtain walls of the Roof Terrace; and the louvered vents and penthouse roof overhang with marble-paneled fascia of the Roof Terrace. The following views from the Kennedy Center are contributing: the 360-degree panoramic view from the Roof Terrace, views of the Potomac River from the River Terrace, views of Theodore Roosevelt Island from the River Terrace, and views of the Virginia shoreline from the River Terrace.

⁶ Kimberly Prothro Williams, National Register of Historic Places Registration Form, "Georgetown Historic District (amended)," 3 July 2003, and "District of Columbia Inventory of Historic Sites," Alphabetic Version dated 30 September 2009.

⁷ Robinson & Associates, D.C. Historic Preservation Office Determination of Eligibility Form, "John F. Kennedy Center for the Performing Arts," 19 January 2012. The DCHPO determined the Kennedy Center eligible for the NRHP on 13 February 2012.

2.2.6 Lady Bird Johnson Park

Lady Bird Johnson Park is a 157-acre island located along the Virginia shore of the Potomac River, directly across from West Potomac Park in Washington, D.C. The park, originally known as Columbia Island, was created from material dredged from the Potomac River to fulfill the construction needs of the Arlington Memorial Bridge and Mount Vernon Memorial Highway. Columbia Island was added to the capital's park system in 1922, and early landscaping plans proposed combining the formal, ceremonial elements of the Arlington Memorial Bridge composition with naturalistic park-like treatment in the surrounding areas and the shoreline. Later, a revised landscape plan was conceived under the Johnson administration's Beautification Program. It was developed by landscape architect Edward D. Stone, Jr., and followed a simple, modern design based on picturesque landscape aesthetics. Today the park is traversed by a complex system of roadways, and two monuments are located at the park's southern end – the Navy-Marine Memorial and the Lyndon Baines Johnson Memorial Grove. Lady Bird Johnson Park has a period of significance from 1915 to 1979. The DCHPO concurred with the findings of the Lady Bird Johnson Cultural Landscapes Inventory on March 24, 2005, in accordance with Section 110 of the NHPA.

Contributing Circulation features of Lady Bird Johnson Park within the APE include Memorial Circle and the GWMP. Contributing Vegetation features include: all of the Stone planting plan; cottonwoods; crabapple, pear and elm trees remaining from the 1932 planting; daffodils; dogwoods; and the large white pines near the pylons. Contributing Buildings and Structures within the APE include: Arlington Memorial Bridge; Arlington Memorial Bridge Boundary Channel Extension; Little River Inlet Bridge; the four pylons of Memorial Circle; the westbound U.S. Route 50 overpass; and the Mount Vernon Bike Trail Bridge. Contributing Views and Vistas include: views from GWMP and Washington/Arlington Boulevard to daffodil beds and flowering dogwoods; views from Memorial Circle east to the Lincoln Memorial, west to Arlington House, The Robert E. Lee Memorial, and Arlington National Cemetery, north up the island, and south down the island; and views along the Mount Vernon Trail near the Potomac River shore and corresponding views from northbound and southbound GWMP. The following views from GWMP northbound are contributing: views north along the Virginia Shore and the Virginia corridor of the GWMP; views north of Arlington Memorial Bridge to Roosevelt Island, the D.C. shoreline, and the Kennedy Center; and views to the Washington shoreline and the National Mall. The following views from GWMP southbound are contributing: views to the island's shoreline and river and views of the Washington shoreline. The following Small-Scale Features within the APE are contributing: the GWMP wooden guardrails and the Mount Vernon Trail NPS benches. Contributing Constructed Water Features within the APE include Boundary Channel.⁸

2.2.7 Lincoln Memorial Grounds

The Lincoln Memorial grounds encompass 94 acres of West Potomac Park and are a major element of the system of public buildings, parks, memorials, bridges, and drives that constitutes the monumental

⁸ National Park Service, Cultural Landscapes Inventory, "Lady Bird Johnson Park, George Washington Memorial Parkway," 2005 (revised 2010).

core of Washington, D.C. The Senate Park Commission (McMillan) Plan of 1901-02 defined a vision for the area that included parks and memorials to great men and important events in American history. The Lincoln Memorial was the first such memorial to be constructed. It was sited along the major east-west axis that extends from the Capitol to the Washington Monument as laid out in the L'Enfant Plan. The park-like grounds of the commemorative landscape surrounding the Lincoln Memorial were mostly designed to be used for passive recreation. The Lincoln Memorial grounds have national significance as an essential part of the Senate Park Commission (McMillan) Plan, one of the most successful implementations of the City Beautiful movement. The Lincoln Memorial is significant for its association with Abraham Lincoln and Martin Luther King, Jr., and as an important example of the classicism of the Beaux Arts style.

Contributing Views and Vistas of the Lincoln Memorial grounds within the APE include: the reciprocal vista between the Lincoln Memorial and Arlington House, The Robert E. Lee Memorial across the Arlington Memorial Bridge; the vista from and to Parkway Drive; and the fan-shaped vista from the Lincoln Memorial west to the Virginia shoreline and the opposite view from the shoreline to the Lincoln Memorial. Contributing Vegetation features include: the rows of American elms along the radial roads; the remnant circular band of American elms around Lincoln Circle; the grass panels surrounded by rows of elms within Lincoln Circle; the intact historic planting around the Lincoln Memorial; the grass on the raised terrace and in the inner circle; the Watergate area planting on both sides of each approach road; the row of American elms on the northeast side of Parkway Drive; the remnant naturalistic grove and memorial trees northeast of Parkway Drive; the grassy areas of Watergate plaza; the intact planting bed at the Constitution Avenue terminus; the riparian planting along the Potomac River shoreline; and the grass strip along the Potomac River shoreline. Contributing Circulation features include: Lincoln Circle; the Arlington Memorial Bridge; Parkway Drive; Ohio Drive; the remnant Constitution Avenue terminus; the sidewalks on both sides of the Arlington Memorial Bridge and Parkway Drive; the sidewalk at the top of the Watergate steps; and the paths on both sides of Ohio Drive at the base of the Watergate steps. Contributing Structures of the Lincoln Memorial grounds within the APE include: the Arlington Memorial Bridge abutment; the Watergate steps; the Parkway Drive abutment; the statuary on the approach pedestals (Valor, Sacrifice, Music and Harvest, and Aspiration and Literature); and the Watergate plaza wing walls. Contributing Small-Scale Features include: the Washington Globe lamp posts on the Arlington Memorial Bridge, Parkway Drive, and Ohio Drive; the granite Watergate steps; and the granite block pavers at the base of the Watergate steps.⁹

2.2.8 Memorial Avenue Corridor

The Memorial Avenue corridor is a mile-long axial landscape that includes the Arlington Memorial Bridge, Memorial Circle, Memorial Avenue Bridge (over Boundary Channel), Memorial Avenue, and the entrance to Arlington National Cemetery. Basic elements of the Memorial Avenue corridor were first articulated in the 1901 Senate Park Commission (McMillan) Plan of 1901-02. With the exception of Memorial Circle, the work of parkway designer Gilmore D. Clarke, the corridor was designed by McKim,

⁹ National Park Service, Cultural Landscape Report, Part I, "West Potomac Park, Lincoln Memorial Grounds," 1999.

Mead & White under project architect William Mitchell Kendall. Conceived as a grand entryway to Arlington National Cemetery, it is a major element of the system of public buildings, parks, memorials, bridges, and drives that constitutes the monumental core of Washington, D.C. The composition is Neoclassical in design, and landscape features are, for the most part, formal in style. The corridor is significant for its embodiment of the ideals of the City Beautiful movement. The bridge and its features also represent the work of several masters, particularly the architects William Mitchell Kendall and Charles Follen McKim. The VASHPO concurred with the findings of the Memorial Avenue Corridor Cultural Landscapes Inventory on July 19, 2004, in accordance with Section 110 of the NHPA. The DCHPO concurred with the findings on August 16, 2004.

Contributing Buildings and Structures of the Memorial Avenue corridor within the APE include: the Arlington Memorial Bridge; *The Arts of War (Sacrifice)* and *The Arts of War (Valor)*; the Memorial Avenue (Boundary Channel) Bridge; and the Memorial Circle Pylons. Contributing Circulation features within the APE include: Memorial Circle; the pedestrian system on the two bridges and avenue; and the pedestrian walks around Memorial Circle. Contributing Small-Scale Features within the APE include: the “Durax” centerline of Memorial Avenue and both bridges; the original cast-iron inlet grates along both bridges and Memorial Avenue; the granite block “Durax” surface of the Memorial Avenue Bridge; the granite curbstones; the granite header stones at the ends of bridges; the granite lamp post bases, the sidewalk paving on the two bridges and avenue, the triangular “islands” of granite blocks at the east and west ends of Memorial Circle; and the Washington standard lamp posts. Contributing Vegetation features within the APE include the holly hedge along Memorial Avenue, the white oak border of Memorial Avenue, and the white pines at the four pylons near Memorial Circle. Contributing Views and Vistas include: views of the green parkland along both sides of the Potomac from Arlington Memorial Bridge and views to the river, Capitol dome, and other landmarks of the Capital from Memorial Circle. Contributing Constructed Water Features within the APE include Boundary Channel.¹⁰

2.2.9 Rock Creek and Potomac Parkway

U.S. Reservation 360 occupies the gorge and rim of the lower Rock Creek Valley and a stretch of land along the Potomac River waterfront. Comprised of approximately 180 acres in the northwest quadrant of Washington, D.C., the Reservation’s primary feature is the Rock Creek and Potomac Parkway, a designed linear landscape dedicated to scenic driving. Officially authorized in 1913 to provide a landscaped roadway connection between the Mall and Potomac Park (later renamed East and West Potomac Parks) and the already established Rock Creek Park and National Zoo, the Rock Creek and Potomac Parkway comprises a major component of the District’s comprehensive park system developed following City Beautiful ideals during the early twentieth century. It was the first parkway in the metropolitan region and one of the earliest parkways in the nation. It is significant in the areas of

¹⁰ National Park Service, Cultural Landscapes Inventory, “Memorial Avenue Corridor, George Washington Memorial Parkway,” 2004 (revised 2009).

community planning and development, engineering, recreation, and landscape architecture during the period 1828 to 1951.

Contributing features of the Rock Creek and Potomac Parkway include *The Arts of Peace*, the Roadway, the Millet Lamp posts, the Trail Network, the Stone Seawall, the Sycamore Allée, Rock Creek, the Chesapeake & Ohio Canal, the K Street Bridge, the Sewer Pumping Station, Culverts (that incorporate headwalls), the Godey Lime Kilns, the Pennsylvania Avenue Bridge, the M Street Bridge, P Street Beach, P Street Bridge, the P Street Road Bridge, Dumbarton Bridge, the Median, Lyons Mill Footbridge, South Waterside Drive Overpass, the Washington City Tunnel Storage Shed, the Massachusetts Avenue Bridge, North Waterside Drive, Saddle Club Footbridge, Shoreham Hill, Shoreham Hill Road Bridge, the Quarry, the Connecticut Avenue Bridge, the Woodley Lane Bridge Abutments, the Calvert Street Bridge, and the Parkway Ending. The Rock Creek and Potomac Parkway was listed in the D.C. Inventory of Historic Sites on November 8, 1964, and in the NRHP on May 4, 2005, under the multiple property listing “Parkways of the National Capital Region, 1913-1965.”¹¹

2.2.10 Theodore Roosevelt Island

Historically, Theodore Roosevelt Island was a natural passage across the Potomac River and a locus of commercial and transportation activity. In 1932 the island, which measures approximately 90 acres, was transferred to the federal government to serve as a national memorial to President Theodore Roosevelt. Landscape architect Frederick Law Olmsted, Jr., along with architect John Russell Pope, prepared plans for the memorial. The overall goal of the plan was the establishment of a native woodland which would memorialize Theodore Roosevelt for his achievements as a leader in conservation policy and commemorate the primeval forest of the Potomac River valley. In 1967, a large open-air architectural monument commemorating Roosevelt was completed on the northern end of the island. Roosevelt Island is unique among presidential memorials in its commemoration of a specific area of presidential achievement and in its development primarily as a living landscape memorial. The island has multiple periods of significance (1749-1833, 1861-1865, and 1931-1967) and is important as a cultural landscape design of famed landscape architect Frederick Law Olmsted, Jr., as an integral part of the Senate Park Commission (McMillan) Plan of 1901-02, and as an important addition to the landscape setting of the National Mall. Theodore Roosevelt Island was listed in the D.C. Inventory of Historic Sites on November 8, 1964, and in the NRHP on October 15, 1966 (updated in 2001). In addition, the DCHPO concurred with the findings of the Theodore Roosevelt Cultural Landscapes Inventory on September 16, 2012, in accordance with Section 110 of the NHPA.

Contributing Circulation features of Theodore Roosevelt Island include the Woods Trail, the Upland Trail, the Swamp Trail, the North Transverse Trail, and Remnants of the Causeway. Contributing Buildings and Structures include the Theodore Roosevelt Memorial, including the monoliths “Youth,” “Manhood,” “The State,” and “Nature,” the benches, pools, and plaza; the Theodore Roosevelt Island bridges; the

¹¹ Eve L. Barsoum, National Register of Historic Places Registration Form, “Rock Creek and Potomac Parkway Historic District,” 4 May 2005.

Theodore Roosevelt Island fountains; the Mason House and Mason Ice House ruins; the wharf ruins on the north shore; and the ruin of the boat or scow on the east side of the island. Contributing Small-Scale Features include two low stone retaining walls, and the benches in memorial plaza. Contributing Vegetation features include the plans associated with the Olmsted Jr. plan and the plants associated with the original plaza. Contributing Land Use features include the use of the site as a presidential memorial and the use of the site to experience nature. Contributing Topographic features include the topography dating back to Olmsted. Contributing Views and Vistas include views within and across the plaza. Contributing Constructed Water Features include the large moats and pools adjacent to the plaza.¹²

2.2.11 Watergate

The Watergate consists of a complex of six interconnected buildings designed by Modernist architect Luigi Moretti and constructed between 1964 and 1971 on land adjacent to the Rock Creek and Potomac Parkway overlooking the Potomac River. The Watergate was the site of one of the biggest scandals in modern United States history, which forced the resignation of President Nixon on August 9, 1974. The Watergate also possesses exceptional architectural significance as an outstanding and innovative example of the Modern Movement in Washington, D.C. The landscape design by Boris Timchenko accentuates the Modernist building with plantings, fountains and pools on terraces with broad views of the river. The periods of significance include 1964 to 1971, the period in which the complex was constructed, and 1972, the year of the Watergate break-in. The Watergate was listed in the D.C. Inventory of Historic Sites on February 24, 2005, and in the NRHP on October 12, 2005.¹³

¹² National Park Service, Cultural Landscapes Inventory, "Theodore Roosevelt Island," 2010.

¹³ C. Albee, A. Schoenfeld, E. Thompson, and L. Trieschmann, National Register of Historic Places Registration Form, "Watergate," 12 October 2005, and "District of Columbia Inventory of Historic Sites," Alphabetic Version dated 30 September 2009.

3.0 ASSESSMENT OF EFFECTS¹⁴

3.1 Methodology

The criteria of adverse effect, as defined in 36 CFR Part 800.5, were applied to assess the potential effects of the Kennedy Center Expansion Connection Project alternatives on the historic properties and cultural resources within the APE. An adverse effect is found when an undertaking may alter, directly or indirectly, any of the characteristics of a historic property that qualify it for inclusion in the NRHP in a manner that would diminish the integrity of the property's location, design, setting, materials, workmanship, feeling, or association. Adverse effects may include reasonably foreseeable effects that may occur later in time, be farther removed in distance, or be cumulative. Examples of adverse effects on historic properties include:

- the physical destruction of or damage to all or part of the property;
- the alteration of a property, including restoration, rehabilitation, repair, maintenance, stabilization, and provision of handicapped access, that is not consistent with the Secretary of the Interior's Standards for the Treatment of Historic Properties;
- the removal of the property from its historic location;
- the change in character of the property's use or of physical features within the property's setting that contribute to its historic significance;
- the introduction of visual, atmospheric, or audible elements that diminish the integrity of the property's significant historic features;
- the neglect of a property which causes its deterioration; and
- the transfer, lease, or sale of property out of Federal ownership or control without adequate and legally enforceable restrictions or conditions to ensure long-term preservation of that property's historic significance.

The following analysis is an assessment of the effects of the undertaking on NRHP-eligible or NRHP-listed historic properties and cultural resources and is based upon the Section 106 criteria of adverse effect.

3.2 Description of Alternatives

3.2.1 No Action Alternative

Under the No Action alternative, the Kennedy Center Expansion Connection Project would not be implemented. This alternative describes the continuation of the existing conditions, operations, and maintenance of the Kennedy Center, including the planned and NCPC-approved Kennedy Center Expansion Project, which will construct three land-based pavilions south of the existing facility. This alternative also describes the continuation of the existing conditions and operations of the Rock Creek and Potomac Parkway and the Rock Creek Paved Recreation Trail. (See Figure 7 and Figure 8.)

¹⁴ See Table 1 in the Appendix for a summary of the adverse effect determinations.

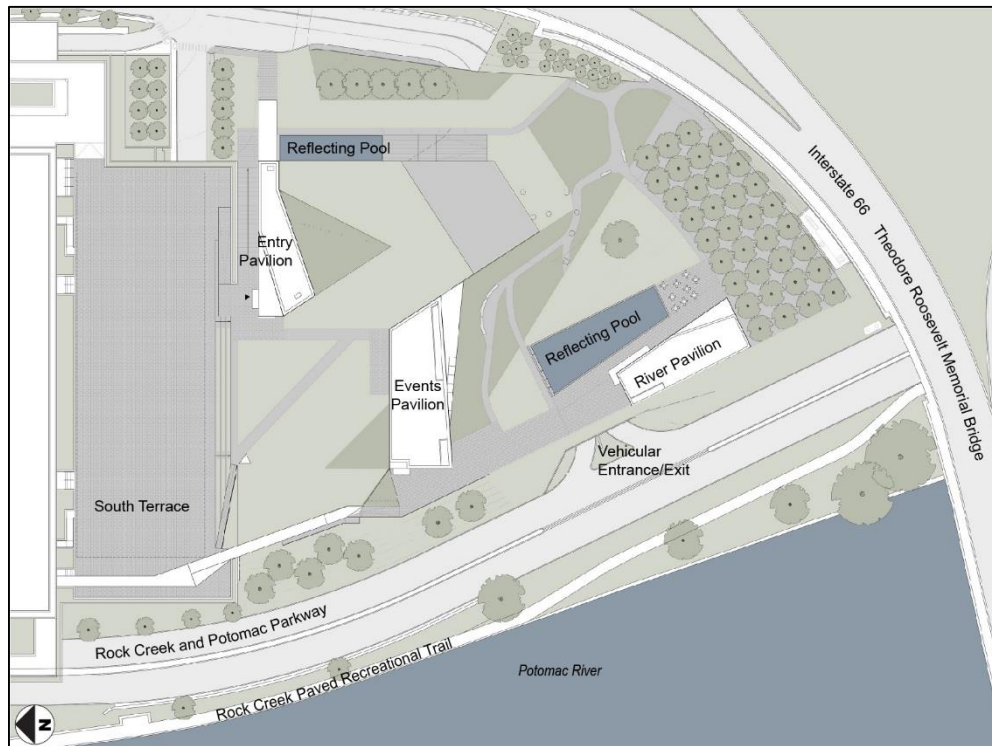


Figure 7: No Action Alternative, plan view (not to scale).



Figure 8: No Action Alternative, plan view (not to scale).

3.2.2 At-Grade Access Alternative

The At-Grade Access Alternative proposes to connect the Kennedy Center Expansion Project and the Rock Creek Paved Recreation Trail via an at-grade crossing that would traverse the northbound and southbound lanes of the Rock Creek and Potomac Parkway. Under this alternative, the Rock Creek Paved Recreation Trail would not be rerouted and no trees would be removed or relocated. Two trail spurs would be added to connect the at-grade crossing with the paved recreation trail. Small-scale features, including benches and a bicycle rack (final locations to be determined), would be added along the trail in the vicinity of the crossing. (See Figure 9 and Figure 10.)

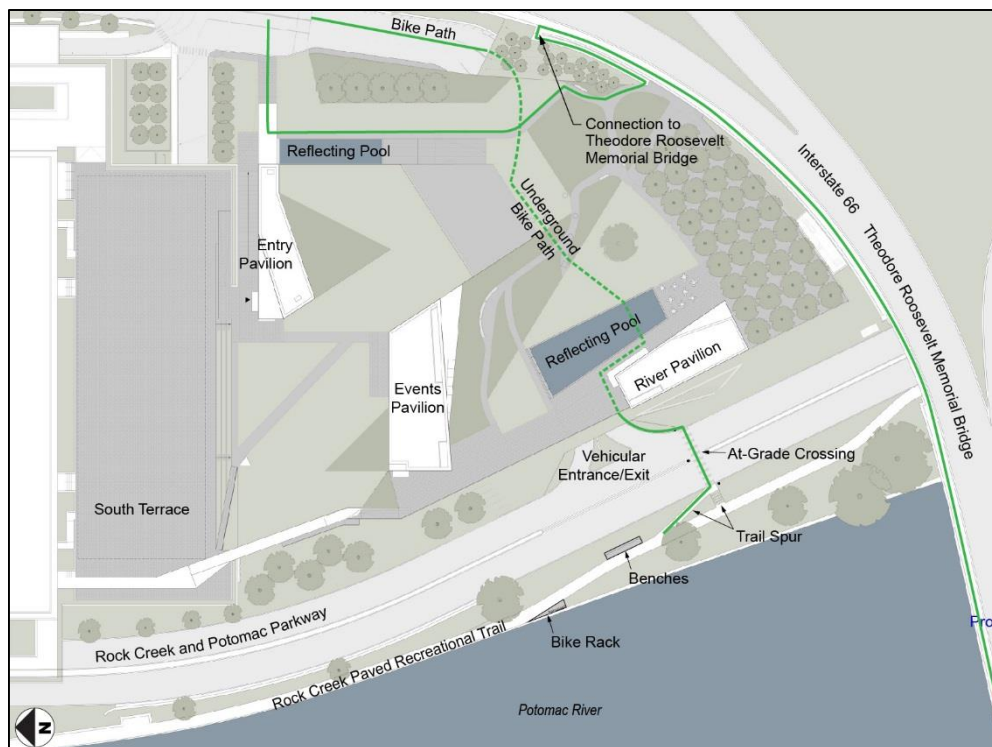


Figure 9: At-Grade Crossing Access Alternative, plan view (not to scale) showing the proposed bicycle route (in green) from the Rock Creek Paved Recreation Trail through the site of the Expansion Project.



Figure 10: At-Grade Crossing Access Alternative, oblique view.

3.2.3 Bridge Access with Ramp and Stairs Alternative

The Bridge Access with Ramp and Stairs Alternative would include a bridge that would span the northbound and southbound lanes of the Rock Creek and Potomac Parkway and would be accessed from the Rock Creek Paved Recreation Trail by both a ramp and stairs. The connection would be a steel structure, and the bridge component would measure approximately 11 feet wide. Under this alternative, a section of the Rock Creek Paved Recreation Trail would be rerouted and three trail spurs would be added to connect the trail with the landing of the stair at the south end of the ramp, the ramp landing, and the landing of the north stair. Small-scale features, including benches and a bicycle rack (final locations to be determined), would be added along the trail in the vicinity of the bridge. One tree would be removed for the construction of the ramp, and a replacement tree would be planted near the location of the original. (See Figure 11 and Figure 12.)

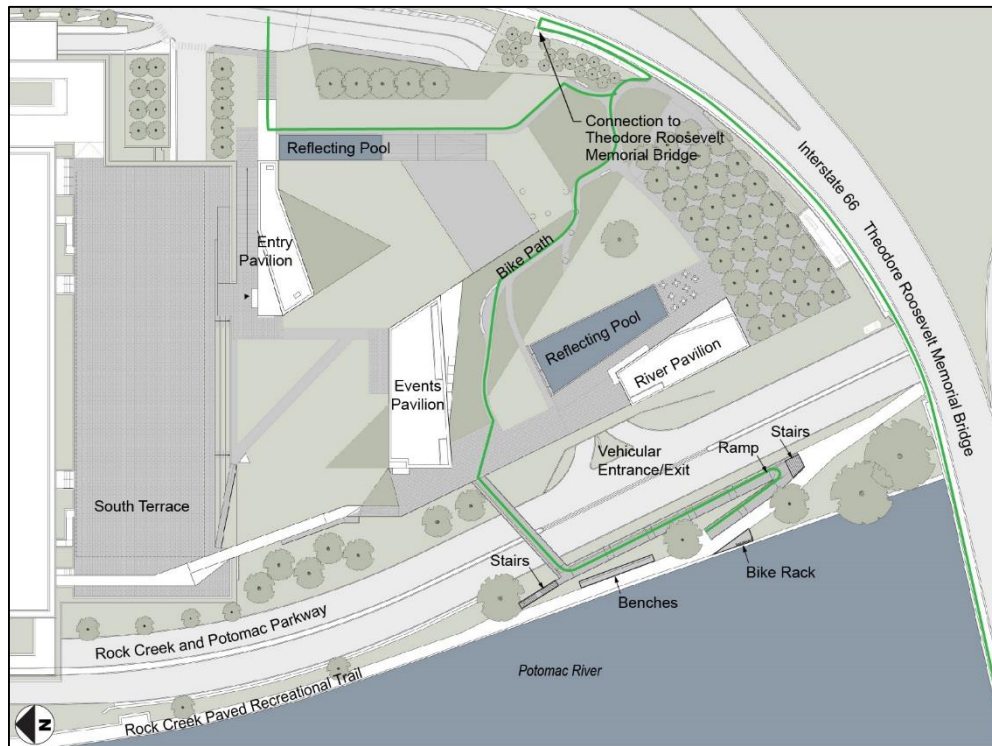


Figure 11: Bridge Access with Ramp and Stairs Alternative, plan view (not to scale) showing the proposed bicycle route (in green) from the Rock Creek Paved Recreation Trail through the site of the Expansion Project.



Figure 12: Bridge Access with Ramp and Stairs Alternative, oblique view.

3.2.4 Bridge Access with Ramp and Elevator Alternative

The Bridge Access with Ramp and Elevator Alternative would include a bridge that would span the northbound and southbound lanes of the Rock Creek and Potomac Parkway and would be accessed from the Rock Creek Paved Recreation Trail by both a ramp and an elevator. The elevator would measure 14 feet above the bridge deck and 31 feet above the Rock Creek Paved Recreation Trail. The connection would be a steel structure, and the bridge component would measure approximately 11 feet wide. Under this alternative, a section of the Rock Creek Paved Recreation Trail would be rerouted and three trail spurs would be added to connect the trail with the landing of the stair at the south end of the ramp, the ramp landing, and the elevator threshold. Small-scale features, including benches and a bicycle rack (final locations to be determined), would be added along the trail in the vicinity of the bridge. One tree would be removed for the construction of the ramp, and a replacement tree would be planted near the location of the original. (See Figure 13 and Figure 14.)

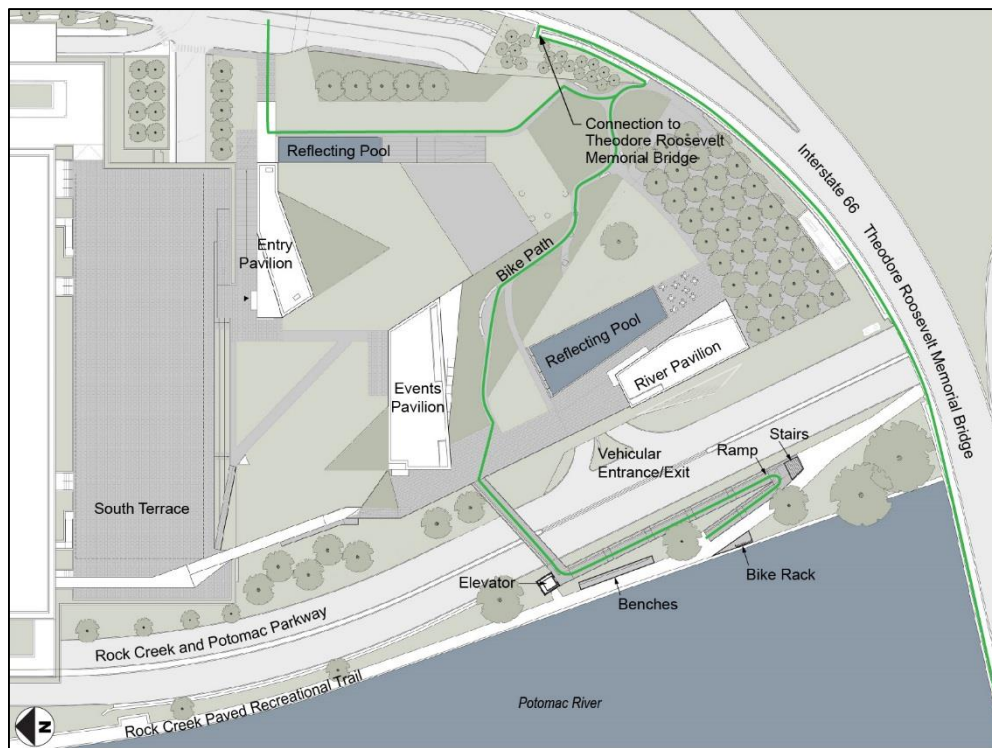


Figure 13: Bridge Access with Ramp and Elevator Alternative, plan view (not to scale) showing the proposed bicycle route (in green) from the Rock Creek Paved Recreation Trail through the site of the Expansion Project.



Figure 14: Bridge Access with Ramp and Elevator Alternative, oblique view.

3.2.5 River Terrace Access Alternative

The River Terrace Access Alternative proposes a pair of curved staircases with integrated elevators that would provide access between the Kennedy Center River Terrace and the Rock Creek Paved Recreation Trail. Under this alternative, portions of the existing terrace wall and planter structure would be removed from the River Terrace and two platforms, each measuring 20 feet wide, would extend approximately 16 feet out over the southbound lanes of the Rock Creek and Potomac Parkway. Each platform would be centered on the existing terrace fountains and the entrances to the Hall of Nations and the Hall of States. A paved plaza would be constructed at the bottom of the stair and elevator structures that tied into the Rock Creek Paved Recreation Trail. The elevators would be approximately 14 feet high as measured from the deck of the River Terrace. (See Figure 15 and Figure 16.)

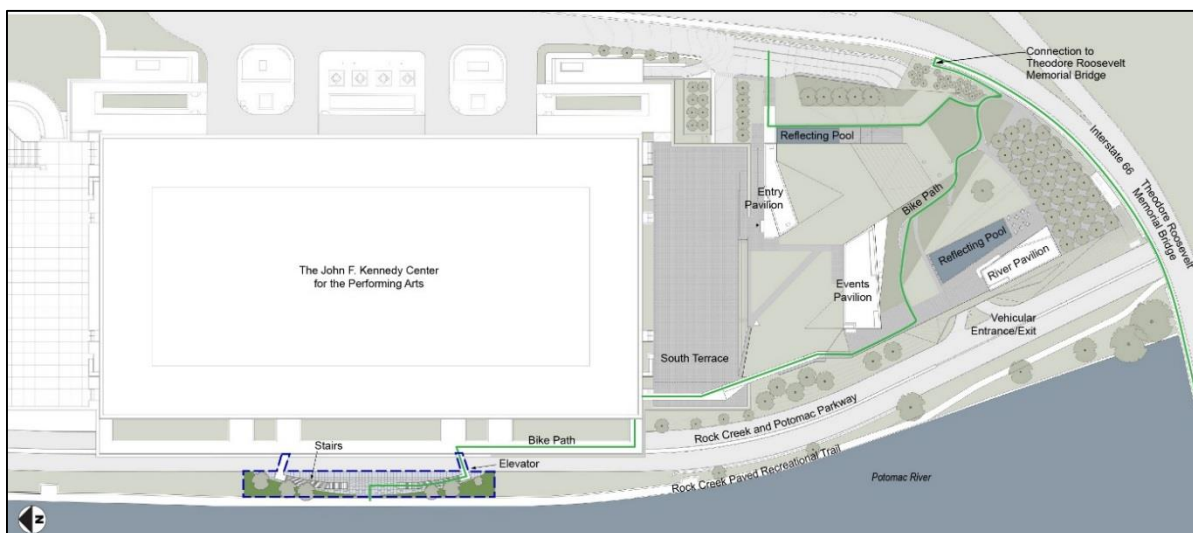


Figure 15: River Terrace Access Alternative, plan view (not to scale) showing the proposed bicycle route (in green) from the Rock Creek Paved Recreation Trail through the site of the Expansion Project.



Figure 16: River Terrace Access Alternative, oblique view.

3.3 Effects Assessment

Arlington Memorial Bridge and Related Structures

Arlington Memorial Bridge and Related Structures, which forms part of the southern boundary of the project's APE, is significant as the principal physical and symbolic connection between the Lincoln Memorial and Virginia's Arlington House, The Robert E. Lee Memorial.

No Action Alternative

The No Action Alternative would have no adverse effect on the overall integrity or the character-defining features of the Arlington Memorial Bridge and Related Structures.

At-Grade Crossing Access Alternative

The At-Grade Crossing Access Alternative would not be visible from the Arlington Memorial Bridge and would have no adverse effect on the resource. (See Figure 17 and Figure 18.)

Bridge Access with Ramp and Stairs Alternative

Although not visible from the entire length of the Arlington Memorial Bridge, the Bridge Access with Ramp and Stairs Alternative would be minimally visible from the west end of the structure. However, the primary vista of the bridge along the east-west axis of the National Mall would not be affected. The Bridge Access with Ramp and Stairs Alternative would have no adverse effect on the Arlington Memorial Bridge and Related Structures. (See Figure 17 and Figure 18.)

Bridge Access with Ramp and Elevator Alternative

Although not visible from the entire length of the Arlington Memorial Bridge, the Bridge Access with Ramp and Elevator Alternative would be minimally visible from the west end of the structure. However, the primary vista of the bridge along the east-west axis of the National Mall would not be affected. The Bridge Access with Ramp and Elevator Alternative would have no adverse effect on the Arlington Memorial Bridge and Related Structures. (See Figure 17 and Figure 18.)

River Terrace Access Alternative

Although not visible from the entire length of the Arlington Memorial Bridge, the River Terrace Access Alternative would be minimally visible from the west end of the structure. However, the primary vista of the bridge along the east-west axis of the National Mall would not be affected. The River Terrace Access Alternative would have no adverse effect on the Arlington Memorial Bridge and Related Structures. (See Figure 17 and Figure 18.)



Figure 17: View of the Kennedy Center from the east end of the Arlington Memorial Bridge.



Figure 18: View of the Kennedy Center from the west end of the Arlington Memorial Bridge.

East and West Potomac Parks Historic District

Contributing features of the East and West Potomac Parks Historic District within the APE include the Lincoln Memorial Grounds, the Arlington Memorial Bridge, and the Stone Seawalls. Also among the defining elements of the East and West Potomac Parks Historic District are the vast unimpeded vistas that connect the broad greensward, the distant monuments, the Potomac River, and the low skyline of the city.

No Action Alternative

The No Action Alternative would have no adverse effect on the overall integrity or the character-defining features of the East and West Potomac Parks Historic District.

At-Grade Crossing Access Alternative

The At-Grade Crossing Access Alternative would not be visible from the East and West Potomac Parks Historic District and would have no adverse effect on the resource. (See Figure 19.)

Bridge Access with Ramp and Stairs Alternative

The impacts of the Bridge Access with Ramp and Stairs Alternative on the Lincoln Memorial Grounds and the Arlington Memorial Bridge are covered in other sections of text related directly to each resource. The Bridge Access with Ramp and Stairs Alternative would have no impact on the Stone Seawalls, which are located south of the Theodore Roosevelt Memorial Bridge. Due to sightlines and the location and relative scale of the connection structure, the Bridge Access with Ramp and Stairs Alternative would be minimally visible from locations within the historic district and would have no adverse effect on views from the East and West Potomac Parks Historic District. (See Figure 19.)

Bridge Access with Ramp and Elevator Alternative

The impacts of the Bridge Access with Ramp and Elevator Alternative on the Lincoln Memorial Grounds and the Arlington Memorial Bridge are covered in other sections of text related directly to each resource. The Bridge Access with Ramp and Stairs Alternative would have no impact on the Stone Seawalls, which are located south of the Theodore Roosevelt Memorial Bridge. Due to sightlines and the location and relative scale of the connection structure, the Bridge Access with Ramp and Elevator Alternative would be minimally visible from locations within the historic district and would have no adverse effect on views from the East and West Potomac Parks Historic District. (See Figure 19.)

River Terrace Access Alternative

The impacts of the River Terrace Alternative on the Lincoln Memorial Grounds and the Arlington Memorial Bridge are covered in other sections of text related directly to each resource. The River Terrace Alternative would have no impact on the Stone Seawalls, which are located south of the Theodore Roosevelt Memorial Bridge. The River Terrace Access Alternative would not be visible from the East and West Potomac Parks Historic District and would have no adverse effect on the resource. (See Figure 19.)



Figure 19: View towards the Kennedy Center from the East and West Potomac Parks Historic District.

George Washington Memorial Parkway

The landscape values of the GWMP are associated with the preservation of the scenic and aesthetic qualities of the Potomac River valley. Hilltop vistas provide glimpses of Washington's monumental core and were a central purpose for the establishment of the parkway and its continuing protection. One significant aspect of the GWMP is its function as a designed entryway into the National Capital. As such, it provides a picturesque approach to Washington with views of the Potomac River, the monuments, and the federal city beyond.

No Action Alternative

The No Action Alternative would have no adverse effect on the overall integrity or the character-defining features of the GWMP.

At-Grade Crossing Access Alternative

The At-Grade Crossing Access Alternative would not be visible from the GWMP and would have no adverse effect on the resource. (See Figure 20.)

Bridge Access with Ramp and Stairs Alternative

Due to distances, sightlines, and the location and relative scale of the connection structure, the Bridge Access with Ramp and Stairs Alternative would insignificantly alter existing views and would not impede

views of the monumental core from the GWMP. Therefore, the Bridge Access with Ramp and Stairs Alternative would have no adverse effect on the resource. (See Figure 20.)

Bridge Access with Ramp and Elevator Alternative

Due to distances, sightlines, and the location and relative scale of the connection structure, the Bridge Access with Ramp and Elevator Alternative would insignificantly alter existing views and would not impede views of the monumental core from the GWMP. Therefore, the Bridge Access with Ramp and Elevator Alternative would have no adverse effect on the resource. (See Figure 20.)

River Terrace Access Alternative

Due to distances, sightlines, and the location and relative scale of the connection structure, the River Terrace Access Alternative would insignificantly alter existing views and would not impede views of the monumental core from the GWMP. Therefore, the River Terrace Access Alternative would have no adverse effect on the resource. (See Figure 20.)



Figure 20: View toward the Kennedy Center from the GWMP.

Georgetown Historic District

Although contributing views and vistas of the Potomac River from the Georgetown Historic District are not specifically identified, Georgetown has been tied to its waterfront location from its eighteenth-century beginnings as a tobacco port and shipping center through its early twentieth-century industrialization.

No Action Alternative

The No Action Alternative would have no adverse effect on the overall integrity or the character-defining features of the Georgetown Historic District.

At-Grade Crossing Access Alternative

The At-Grade Crossing Access Alternative would not be visible from the Georgetown Historic District and would have no adverse effect on the resource.

Bridge Access with Ramp and Stairs Alternative

Due to distances and sightlines, the Bridge Access with Ramp and Stairs Alternative would be minimally visible from the historic district and would have no adverse effect on the resource. (See Figure 21.)

Bridge Access with Ramp and Elevator Alternative

Due to distances and sightlines, the Bridge Access with Ramp and Elevator Alternative would be minimally visible from the historic district and would have no adverse effect on the resource. (See Figure 21.)

River Terrace Access Alternative

While the River Terrace Access Alternative would be visible from the historic district, the alternative would not alter any of the characteristics of the district that qualify it for inclusion in the NRHP or diminish the integrity of the resource. As a result, the River Terrace Access Alternative would have no adverse effect on the Georgetown Historic District. (See Figure 21.)



Figure 21: View toward the Kennedy Center from the Georgetown Historic District.

John F. Kennedy Center for the Performing Arts

Character-defining features of the Kennedy Center include intangible attributes of the building's aesthetic composition such as its bilateral symmetry; long, low horizontality; hierarchical facades; and clear, geometric form. Exterior contributing features include the thin-clad marble curtain walls; the size and location of the plaza-level glass curtain walls on the west facade; the roof overhang and marble-paneled fascia; the exterior columns (including the Roof Terrace columns); the stage access doors; the bronze wall signage; the engraved quotations on the west facade; the West Terrace footprint and cantilevered structure; the marble panels of the north, west, and south fascia of the West Terrace overhang; the shape and location of the planting boxes and water features of the West Terrace; the West Terrace perimeter wall plantings; the vertical paired openings on the north, south, and center bays of the east facade; the size and location of the Entrance Plaza water features; the Entrance Plaza public art including *Don Quixote*, *From Columbia to John F. Kennedy*, and *America and War and Peace*; and the size and location of the glass curtain walls, the louvered vents, and the penthouse roof overhang including the marble-paneled fascia of the Roof Terrace. Due to extensive alterations made during a 2005 garage expansion and site improvement project, there are no contributing features of the North Terrace, the Upper South Terrace, and the Lower South Terrace. Contributing views from the Kennedy Center include the 360-degree panoramic view from the Roof Terrace, views of the Potomac River from the River Terrace, views of Theodore Roosevelt Island from the River Terrace, and views of the Virginia shoreline from the River Terrace.

No Action Alternative

The No Action Alternative would have no adverse effect on the overall integrity or the character-defining features of the Kennedy Center.

At-Grade Crossing Access Alternative

The At-Grade Crossing Access Alternative would have no adverse effect on the overall integrity or the character-defining features of the Kennedy Center.

Bridge Access with Ramp and Stairs Alternative

The Bridge Access with Ramp and Stairs Alternative would have no adverse effect on the overall integrity or the character-defining features of the Kennedy Center. The Bridge Access with Ramp and Stairs Alternative would minimally interrupt the 360-degree panoramic view from the Kennedy Center's Roof Terrace and contributing views from the River Terrace of the Potomac River, Theodore Roosevelt Island and the Virginia shoreline would not be impacted. (See Figure 22 and Figure 23.)

Bridge Access with Ramp and Elevator Alternative

The Bridge Access with Ramp and Elevator Alternative would have no adverse effect on the overall integrity or the character-defining features of the Kennedy Center. The Bridge Access with Ramp and Elevator Alternative would minimally interrupt the 360-degree panoramic view from the Kennedy Center's Roof Terrace and contributing views from the River Terrace of the Potomac River, Theodore Roosevelt Island and the Virginia shoreline would not be impacted. (See Figure 22 and Figure 23.)



Figure 22: View from the Kennedy Center Roof Terrace looking southwest.



Figure 23: View looking south from the Kennedy Center River Terrace.

River Terrace Access Alternative

The River Terrace Access Alternative would have an adverse effect on the Kennedy Center. The construction of the staircase platforms would require the removal of original fabric (two segments of the existing River Terrace perimeter wall each measuring 20 feet wide) and would alter the original footprint of the River Terrace by extending portions of the terrace to the west. The River Terrace Access Alternative would also diminish the cantilevered quality of the River Terrace, interrupt the overall horizontality of the building's original design, and detract from the building's free-standing character. (See Figure 35.) Lastly, the stair and elevator structures of the River Terrace Access Alternative would interrupt views from the River Terrace. (See Figure 24.) The 360-degree panoramic view from the Roof Terrace would not be affected.

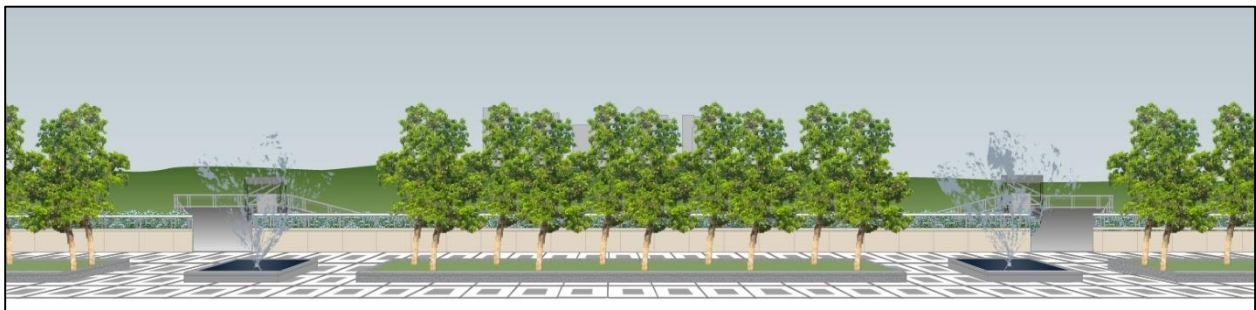


Figure 24: View looking west from the Kennedy Center River Terrace illustrating the staircase platforms, railings, and elevator towers of the River Terrace Access Alternative.

Lady Bird Johnson Park

Contributing views and vistas of Lady Bird Johnson Park within the APE include views from the Mount Vernon Trail and northbound GWMP to the Kennedy Center.

No Action Alternative

The No Action Alternative would have no adverse effect on the overall integrity or the character-defining features of Lady Bird Johnson Park.

At-Grade Crossing Access Alternative

The At-Grade Crossing Access Alternative would not be visible from Lady Bird Johnson Park and would have no adverse effect on the resource. (See Figure 25.)

Bridge Access with Ramp and Stairs Alternative

The Bridge Access with Ramp and Stairs Alternative would be minimally visible from Lady Bird Johnson Park and would have no adverse effect on the resource. (See Figure 25.)

Bridge Access with Ramp and Elevator Alternative

The Bridge Access with Ramp and Elevator Alternative would be minimally visible from Lady Bird Johnson Park and would have no adverse effect on the resource. (See Figure 25.)

River Terrace Access Alternative

The River Terrace Access Alternative would be minimally visible from Lady Bird Johnson Park and would have no adverse effect on the resource. (See Figure 25.)



Figure 25: View toward the Kennedy Center from Lady Bird Johnson Park.

Lincoln Memorial Grounds

The most important designed vista of the Lincoln Memorial grounds aligns with the National Mall axis east to the Washington Monument and the U.S. Capitol and west across the Watergate steps to the Virginia shoreline.

No Action Alternative

The No Action Alternative would have no adverse effect on the overall integrity or the character-defining features of the Lincoln Memorial grounds.

At-Grade Crossing Access Alternative

The At-Grade Crossing Access Alternative would not be visible from the Lincoln Memorial grounds and would have no adverse effect on the resource. (See Figure 26.)

Bridge Access with Ramp and Stairs Alternative

Due to distances and sightlines, the Bridge Access with Ramp and Stairs Alternative would be minimally visible from locations within the Lincoln Memorial grounds and would have no adverse effect on existing views from the resource. (See Figure 26.)

Bridge Access with Ramp and Elevator Alternative

Due to distances and sightlines, the Bridge Access with Ramp and Elevator Alternative would be minimally visible from locations within the Lincoln Memorial grounds and would have no adverse effect on existing views from the resource. (See Figure 26.)

River Terrace Access Alternative

The River Terrace Access Alternative would not be visible from the Lincoln Memorial grounds and would have no adverse effect on the resource. (See Figure 26.)



Figure 26: View toward the Kennedy Center from the Lincoln Memorial grounds.

Memorial Avenue Corridor

Contributing Memorial Avenue corridor views and vistas within the APE include views of the green parkland along both sides of the Potomac from the Arlington Memorial Bridge and views of the river from Memorial Circle.

No Action Alternative

The No Action Alternative would have no adverse effect on the overall integrity or the character-defining features of the Memorial Avenue corridor.

At-Grade Crossing Access Alternative

The At-Grade Crossing Access Alternative would not be visible from the Memorial Avenue corridor and would have no adverse effect on the resource. (See Figure 27.)

Bridge Access with Ramp and Stairs Alternative

The Bridge Access with Ramp and Stairs Alternative would be minimally visible from points along the Memorial Avenue corridor and would have no adverse effect on the resource. (See Figure 27.)

Bridge Access with Ramp and Elevator Alternative

The Bridge Access with Ramp and Elevator Alternative would be minimally visible from points along the Memorial Avenue corridor and would have no adverse effect on the resource. (See Figure 27.)

River Terrace Access Alternative

The Bridge Access with Ramp and Elevator Alternative would be minimally visible from points along the Memorial Avenue corridor and would have no adverse effect on the resource. (See Figure 27.)



Figure 27: View of the Kennedy Center from the Memorial Avenue corridor.

Rock Creek and Potomac Parkway

The Rock Creek and Potomac Parkway features twenty-eight contributing resources, eight of which are located within the APE. These include *The Arts of Peace*, the Millet Lamp posts, the Stone Seawalls, Rock

Creek, the Sycamore Allée, the Roadway, and the Network of Trails.¹⁵ Significant views from the parkway include panoramic views of the Potomac River and of Theodore Roosevelt Island.

No Action Alternative

The No Action Alternative would have no adverse effect on the overall integrity or the character-defining features of the Rock Creek and Potomac Parkway. (See Figure 28 and Figure 31.)

At-Grade Crossing Access Alternative

The At-Grade Access Alternative would have no adverse effect on the Rock Creek and Potomac Parkway. While the At-Grade Access Alternative would add a trail spur to the Rock Creek Paved Recreation Trail to connect with the at-grade crossing, this alternation would not significantly impact the Network of Trails, a contributing element of the parkway. (The At-Grade Access Alternative would not impact views from the Rock Creek and Potomac Parkway or impact the following contributing resources of the parkway: *The Arts of Peace*, Millet Lamp posts, Stone Seawalls, Rock Creek, and the Chesapeake & Ohio Canal, and the Sycamore Allée.) (See Figure 28 and Figure 31.)

Bridge Access with Ramp and Stairs Alternative

The Bridge Access with Ramp and Stairs Alternative would have an adverse effect on the Rock Creek and Potomac Parkway. The Bridge Access with Ramp and Stairs Alternative would reroute a section of the Rock Creek Paved Recreation Trail and add three trail spurs, which would impact the Network of Trails, a contributing element of the parkway. In addition, the connection structure would interrupt and be a visual distraction from existing views of the Potomac River and Theodore Roosevelt Island from the Rock Creek and Potomac Parkway Roadway and the Rock Creek Paved Recreation Trail. (Because of the location of the connection structure under the Bridge Access with Ramp and Stairs Alternative, the alternative would have no impact on the following contributing resources of the parkway: *The Arts of Peace*, Millet Lamp posts, Stone Seawalls, Rock Creek, and the Chesapeake & Ohio Canal, and the Sycamore Allée.) (See Figure 29 and Figure 32.)

Bridge Access with Ramp and Elevator Alternative

The Bridge Access with Ramp and Elevator Alternative would have an adverse effect on the Rock Creek and Potomac Parkway. The Bridge Access with Ramp and Elevator Alternative would reroute a section of the Rock Creek Paved Recreation Trail and add three trail spurs, which would impact the Network of Trails, a contributing element of the parkway. In addition, the connection structure would interrupt and be a visual distraction from existing views of the Potomac River and Theodore Roosevelt Island from the Rock Creek and Potomac Parkway Roadway and the Rock Creek Paved Recreation Trail. (Because of the location of the connection structure under the Bridge Access with Ramp and Stairs Alternative, the alternative would have no impact on the following contributing resources of the parkway: *The Arts of*

¹⁵ A row of trees lines the Rock Creek and Potomac Parkway as it courses along the river from the Roosevelt Bridge to the intersection with Virginia Avenue. The Sycamore Allée, a contributing resource of the Rock Creek and Potomac Parkway, is only present in the section of the tree line in front of the Watergate building.

Peace, Millet Lamp posts, Stone Seawalls, Rock Creek, and the Chesapeake & Ohio Canal, and the Sycamore Allée.) (See Figure 30 and Figure 33.)

River Terrace Access Alternative

The River Terrace Access Alternative would have an adverse effect on the Rock Creek and Potomac Parkway. Under the River Terrace Access Alternative, two staircase platforms would extend over the two southbound lanes of the Roadway. This would cause a minor increase in the tunnel effect of passing under the Kennedy Center River Terrace. In addition, the stair and elevator structures would interrupt and be a visual distraction from existing views of the Potomac River from the Rock Creek and Potomac Parkway Roadway. The River Terrace Access Alternative would add a landscaped plaza at the base of the stair and elevator structures, which would impact the Network of Trails, a contributing element of the parkway and add a hardscape element along what is considered a natural pathway to the river. (Because of the location of the connection structure under the River Terrace Access Alternative, the alternative would have no impact on the following contributing resources of the parkway: *The Arts of Peace*, Millet Lamp posts, Stone Seawalls, Rock Creek, and the Chesapeake & Ohio Canal, and the Sycamore Allée.) (Figure 34 and Figure 35.)



Figure 28: View showing existing conditions looking north along the Rock Creek and Potomac Parkway from under the Roosevelt Bridge overpass.



Figure 29: View looking north along the Rock Creek and Potomac Parkway under the Bridge Access with Ramp and Stairs Alternative.



Figure 30: View looking north along the Rock Creek and Potomac Parkway under the Bridge Access with Ramp and Elevator Alternative.



Figure 31: View looking south from the Rock Creek and Potomac Parkway showing existing conditions.



Figure 32: View looking south along the Rock Creek and Potomac Parkway under the Bridge Access with Ramp and Stairs Alternative.



Figure 33: View looking south along the Rock Creek and Potomac Parkway under the Bridge Access with Ramp and Elevator Alternative.



Figure 34: View looking south from the Rock Creek and Potomac Parkway under the River Terrace Access Alternative.

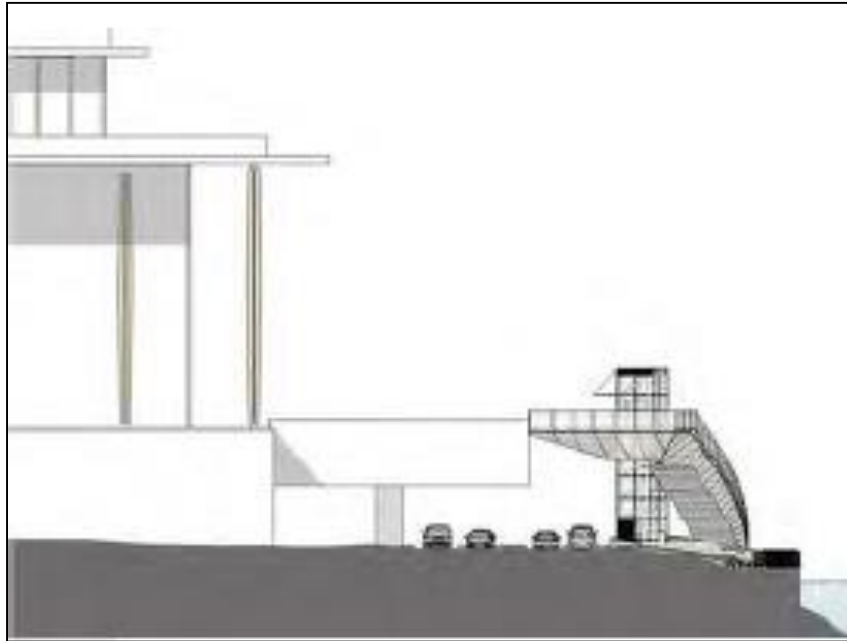


Figure 35: Section showing the River Terrace Access Alternative.

Theodore Roosevelt Island

Measuring approximately 90 acres, Theodore Roosevelt Island is located in the Potomac River, across the Georgetown Channel from the Kennedy Center. The island serves as a presidential memorial and as a site where people can experience a natural setting surrounded by an urban background.¹⁶ Over the years, the setting of the island to the east has changed, with new park, commercial, and residential development along the Georgetown shore, the construction of the Theodore Roosevelt Bridge, and by its location along the flight path of planes departing from and arriving at Reagan National Airport. However, despite these changes to its surroundings, the island's setting continues to be a contributing aspect of its integrity. There are no significant historic views on the northern part of the island, and views to the various commercial and residential structures and roads along the Georgetown waterfront are not contributing. An "Outlook Plateau" once planned for the southern end of the island's upland plateau was to provide a vantage point for visitors to view the Lincoln Memorial, the western end of the Mall, the Potomac River, and other points east. Plans for the Outlook, however, were never carried out, and virtually all views south are blocked by the Theodore Roosevelt Memorial Bridge and by overgrown vegetation. There are no significant historic views looking east across the Potomac toward the project area. Contributing views and vistas are limited to the views within and across the plaza of the Theodore Roosevelt Memorial.

No Action Alternative

The No Action Alternative would have no adverse effect on the overall integrity or the character-defining features of Theodore Roosevelt Island.

¹⁶ National Park Service, Cultural Landscapes Inventory, "Theodore Roosevelt Island," 2010.

At-Grade Crossing Access Alternative

The At-Grade Crossing Access Alternative would have no adverse effect on Theodore Roosevelt Island. (See Figure 36 and Figure 37.)

Bridge Access with Ramp and Stairs Alternative

The Bridge Access with Ramp and Stairs Alternative would have no adverse effect on contributing views and vistas of Theodore Roosevelt Island. While the Bridge Access with Ramp and Stairs Alternative would be seen from the Theodore Roosevelt Island, it would have no adverse effect on the island's setting. Under this alternative, the connection structure would not dominate the island's surroundings, attract the attention of the casual observer, or substantially change the urban landscape that forms the background of the island's natural setting. (See Figure 36 and Figure 37.)

Bridge Access with Ramp and Elevator Alternative

The Bridge Access with Ramp and Elevator Alternative would have no adverse effect on contributing views and vistas of Theodore Roosevelt Island. While the Bridge Access with Ramp and Elevator Alternative would be seen from the Theodore Roosevelt Island, it would have no adverse effect on the island's setting. Under this alternative, the connection structure would not dominate the island's surroundings, attract the attention of the casual observer, or substantially change the urban landscape that forms the background of the island's natural setting. (See Figure 36 and Figure 37.)

River Terrace Access Alternative

The River Terrace Access Alternative would have no adverse effect on contributing views and vistas of Theodore Roosevelt Island. The River Terrace Access Alternative would have an impact on the island's setting. While the River Terrace Access Alternative would not substantially change the urban landscape that forms the background of the island's natural setting, it would likely attract the attention of the casual observer. The River Terrace Access Alternative, however, would not diminish the setting to a degree that reaches the level of an adverse effect. (See Figure 36 and Figure 37.)



Figure 36: View from Theodore Roosevelt Island toward the Kennedy Center.



Figure 37: View from Theodore Roosevelt Island toward the Kennedy Center.

Watergate

The design of the Watergate was carefully planned to complement its location on a site directly adjacent to the Rock Creek and Potomac Parkway and the riverfront and to take full advantage of the views of the Potomac.

No Action Alternative

The No Action Alternative would have no adverse effect on the overall integrity or the character-defining features of the Watergate.

At-Grade Crossing Access Alternative

The At-Grade Crossing Access Alternative would not be visible from the Watergate and would have no adverse effect on the resource. (See Figure 38.)

Bridge Access with Ramp and Stairs Alternative

The Bridge Access with Ramp and Stairs Alternative would not be visible from the Watergate and would have no adverse effect on the resource. (See Figure 38.)

Bridge Access with Ramp and Elevator Alternative

The Bridge Access with Ramp and Elevator Alternative would not be visible from the Watergate and would have no adverse effect on the resource. (See Figure 38.)

River Terrace Access Alternative

While the staircase platforms of the River Terrace Access Alternative would project out over the southbound lanes of the Rock Creek and Potomac Parkway, the platforms would be set back from the northern and southern edges of the River Terrace and would insignificantly alter existing views along the Potomac from the Watergate. As a result, the River Terrace Access Alternative would have no adverse effect on the resource. (See Figure 38.)



Figure 38: View toward the Kennedy Center from the northeast corner of the intersection of F Street, NW, and the Rock Creek and Potomac Parkway.

4.0 CONCLUSION

The Kennedy Center Expansion Connection Project would provide a safe pedestrian and bicycle connection between the Kennedy Center and the Rock Creek Paved Recreation Trail and would improve access and create a public waterfront link to and from the Kennedy Center, the National Mall and Memorial Parks, the Rock Creek Paved Recreation Trail, the Potomac River waterfront, and the surrounding vicinity. Approval of the project by NCPC under the National Capital Planning Act and any necessary permitting or jurisdictional transfers conducted by NPS constitute federal undertakings that require compliance with Section 106 of the National Historic Preservation Act. Following the Section 106 process defined in 36 CFR 800, this report defines the APE for the proposed undertaking, identifies historic properties within the APE, and analyzes the potential for the proposed alternatives to affect these historic resources.

The application of the criteria of adverse effects revealed that the No Action Alternative and the At-Grade Crossing Access Alternative would have no adverse effect on the historic properties within the APE.

The Bridge Access with Ramp and Stairs Alternative would have no adverse effect on the following historic properties within the APE: Arlington Memorial Bridge and Related Structures, East and West Potomac Parks Historic District, GWMP, Georgetown Historic District, John F. Kennedy Center for the Performing Arts, Lady Bird Johnson Park, Lincoln Memorial grounds, Memorial Avenue corridor, Theodore Roosevelt Island, and the Watergate. The Bridge Access with Ramp and Stairs Alternative would have an adverse effect on the Rock Creek and Potomac Parkway.

The Bridge Access with Ramp and Elevator Alternative would have no adverse effect on the following historic properties within the APE: Arlington Memorial Bridge and Related Structures, East and West Potomac Parks Historic District, GWMP, Georgetown Historic District, John F. Kennedy Center for the Performing Arts, Lady Bird Johnson Park, Lincoln Memorial grounds, Memorial Avenue corridor, Theodore Roosevelt Island, and the Watergate. The Bridge Access with Ramp and Elevator Alternative would have an adverse effect on the Rock Creek and Potomac Parkway.

The River Terrace Access Alternative would have no adverse effect on the following historic properties within the APE: Arlington Memorial Bridge and Related Structures, East and West Potomac Parks Historic District, GWMP, Georgetown Historic District, Lady Bird Johnson Park, Lincoln Memorial grounds, Memorial Avenue corridor, Theodore Roosevelt Island, and the Watergate. The River Terrace Access Alternative would have an adverse effect on the Kennedy Center and the Rock Creek and Potomac Parkway.

In conclusion, the effects analysis revealed that of the proposed action alternatives for the Kennedy Center Expansion Connection Project, the River Terrace Access Alternative would have the greatest adverse effect on historic properties. These adverse effects would include modifications to the Kennedy Center's River Terrace, impacts to the cantilevered quality of the River Terrace and the overall horizontality of the Kennedy Center's original design, the interruption of views from the River Terrace,

and impacts to views along the Rock Creek and Potomac Parkway Roadway and Network of Trails. The Bridge Access with Ramp and Stair Alternative and the Bridge Access with Ramp and Elevator Alternative would have similar effects to each other and would have less adverse effect than the River Terrace Access Alternative. The Bridge Access with Ramp and Stair Alternative and the Bridge Access with Ramp and Elevator Alternative would have no direct adverse effect on the Kennedy Center. The At-Grade Crossing Access Alternative would have no adverse effect on the historic properties within the APE. The assessment of adverse effects is summarized in Table 1 (Appendix A).

5.0 BIBLIOGRAPHY

National Register Nominations

Albee, C., A. Schoenfeld, E. Thompson, and L. Trieschmann. National Register of Historic Places – Registration Form. “Watergate.” 12 October 2005.

Barsoum, Eve L. National Register of Historic Places – Registration Form. “Rock Creek and Potomac Parkway Historic District.” 4 May 2005.

Fanning, Kay. National Register of Historic Places – Registration Form. “Theodore Roosevelt Island.” 2001.

Krakow, Jere L. National Register of Historic Places – Registration Form. “George Washington Memorial Parkway.” 2 June 1995.

Mackintosh, Barry. National Register of Historic Places – Nomination Form. “Arlington Memorial Bridge and related features.” 4 April 1980.

Robinson & Associates. National Register of Historic Places – Registration Form. “East and West Potomac Parks Historic District.” 11 November 2001.

Williams, Kimberly Prothro. National Register of Historic Places – Registration Form. “Georgetown Historic District (amended).” 3 July 2003.

NPS Cultural Landscape Studies

NPS Cultural Landscapes Inventory. “Lady Bird Johnson Park.” 2005 (revised 2010).

NPS Cultural Landscapes Inventory. “Memorial Avenue Corridor, George Washington Memorial Parkway.” 2004 (revised 2009).

NPS Cultural Landscapes Inventory. “Theodore Roosevelt Island.” 2010.

NPS Cultural Landscape Report, Part I. “West Potomac Park, Lincoln Memorial Grounds.” 1999.

Other

D. C. Historic Preservation Office. “District of Columbia Inventory of Historic Sites.” Alphabetic Version dated 30 September 2009.

Robinson & Associates. D.C. Historic Preservation Office Determination of Eligibility Form. “John F. Kennedy Center for the Performing Arts.” 19 January 2012.

Stantec. "Phase 1A Archeological Investigations Conducted for the John F. Kennedy Center for the Performing Arts Expansion Project in Washington, D.C." March 2014.

APPENDIX

Table 1: Kennedy Center Expansion Connection Project
Summary of Adverse Effect Determination

	No Action Alternative	At-Grade Crossing Access Alternative	Bridge Access with Ramp and Stair Alternative	Bridge Access with Ramp and Elevator Alternative	River Terrace Access Alternative
Resource					
Arlington Memorial Bridge and Related Structures	No adverse effect	No adverse effect	No adverse effect	No adverse effect	No adverse effect
East and West Potomac Parks Historic District	No adverse effect	No adverse effect	No adverse effect	No adverse effect	No adverse effect
George Washington Memorial Parkway	No adverse effect	No adverse effect	No adverse effect	No adverse effect	No adverse effect
Georgetown Historic District	No adverse effect	No adverse effect	No adverse effect	No adverse effect	No adverse effect
John F. Kennedy Center for the Performing Arts	No adverse effect	No adverse effect	No adverse effect	No adverse effect	<i>Adverse Effect</i> <i>-Views from the River Terrace would be interrupted</i> <i>- River Terrace perimeter wall and River Terrace footprint would be altered</i> <i>-Cantilevered quality of the River Terrace and overall horizontality of the building's original design would be diminished</i>

Table 1: Kennedy Center Expansion Connection Project
Summary of Adverse Effect Determination (cont.)

	No Action Alternative	At-Grade Crossing Access Alternative	Bridge Access with Ramp and Stair Alternative	Bridge Access with Ramp and Elevator Alternative	River Terrace Access Alternative
Resource					
Lady Bird Johnson Park	No adverse effect	No adverse effect	No adverse effect	No adverse effect	No adverse effect
Lincoln Memorial grounds	No adverse effect	No adverse effect	No adverse effect	No adverse effect	No adverse effect
Memorial Avenue corridor	No adverse effect	No adverse effect	No adverse effect	No adverse effect	No adverse effect
Rock Creek and Potomac Parkway	No adverse effect	No adverse effect	<i>Adverse Effect</i> - Views of the Potomac River and Theodore Roosevelt Island from sections of the Rock Creek and Potomac Parkway Roadway and Trail would be interrupted - Rerouting a section of the Rock Creek Paved Recreation Trail and adding three trail spurs would impact the Network of Trails	<i>Adverse Effect</i> - Views of the Potomac River and Theodore Roosevelt Island from sections of the Rock Creek and Potomac Parkway Roadway and Trail would be interrupted - Rerouting a section of the Rock Creek Paved Recreation Trail and adding three trail spurs would impact the Network of Trails	<i>Adverse Effect</i> - Views of the Potomac River and Theodore Roosevelt Island from sections of the Rock Creek and Potomac Parkway Roadway and Trail would be interrupted - Bridge and stair structures would increase tunnel effect along the Rock Creek and Potomac Parkway - Plaza at the base of the stair and elevator structures would impact the Network of Trails
Theodore Roosevelt Island	No adverse effect	No adverse effect	No adverse effect	No adverse effect	No adverse effect
Watergate	No adverse effect	No adverse effect	No adverse effect	No adverse effect	No adverse effect