



Join Lava Beds NM in Planning for the Future

The general management plan will describe a vision and goals for Lava Beds National Monument for the next 20 years.



Dear Friends:

Have you ever wondered how you can make a difference in your community? Do you want to contribute toward safeguarding and preserving your natural and cultural heritage? Would you like to provide leadership and your own ideas on how to best manage, develop, and use a National Park so that it serves all of the public? This is your opportunity. You can do all of these things by becoming a part of the planning effort that will guide the future development, protection, and recreational opportunities at Lava Beds National Monument.

You are invited to join park staff, recreation and preservation planning specialists, other agencies and organizations, and the public in charting the future of Lava Beds National Monument for the next fifteen to twenty years. The monument protects many and varied resources, including a large concentration of lava tube caves, Modoc War sites, and rock art. Lava Beds safeguards and interprets significant aspects of the area's cultural history, and provides educational opportunities to children and the visiting public. The monument has long promoted and enhanced the appreciation, recreational use, and enjoyment of these resources, and now it's time to see where we should go next. Lava Beds National Monument is special and unique, and of national importance. It is also your park.

The National Park Service is just beginning to initiate planning efforts that will lead to a new General Management Plan (GMP) for Lava Beds National Monument. A GMP provides a framework and management direction for the future. It identifies important park issues, appropriate uses, development goals, sets program objectives, determines user capacities, and directs resource protection programs for fifteen to twenty years. It will serve as the monument's "blueprint" for the future, and everyone is invited and encouraged to be part of this effort.

The last general management plan for Lava Beds National Monument was completed in 1996. Since then, the monument has been expanded, visitation has increased, and monument staff and researchers have learned much more about the significance of the monument's geologic features and historic sites. Much has changed in how the public perceives and interacts with the park and its resources. Park staff have been busy coordinating research, improving collections management, and inventorying park resources. Development plans are now finished and in use, including the upgrading of all park facilities, a new visitor center, a research center, and new interpretive displays. New roadways, parking areas, and cave improvements have all been completed.

The 1996 GMP has been successfully implemented, and now a new direction is necessary. Your involvement is essential in

crafting a general management plan that will capture and perpetuate the connections visitors have had with Lava Beds over the years, and that will continue to protect and enhance the park's resources, visitor experiences, and educational opportunities. We hope you will join us to express your thoughts, ideas, and vision so that together we can ensure that Lava Beds continues to be the best it can be and provides that meaningful National Park experience that generations of park visitors associate with this special place.

Craig Dorman
Superintendent

Join us in planning for Lava Beds National Monument's Future

We need your participation to help create the framework that will guide Lava Beds National Monument for the next 20 years.

This newsletter includes:

- ▣ Park Purpose and Significance: Why was Lava Beds NM established?
- ▣ How you can Participate
- ▣ GMP Planning Schedule
- ▣ Comment Form
- ▣ Public Meeting Schedule

Step 1. Establishing a Foundation

Why was Lava Beds National Monument Established?

The first step of the GMP planning process is to clarify why the park exists. What was so special about Lava Beds that President Calvin Coolidge took action to preserve it as part of our national park system in 1925? We answer this question by preparing a "foundation statement." The foundation statement records our shared understanding of a park's purpose, significance, and resources and values – a foundation for planning and management. Below are statements about Lava Beds' purpose and significance. Please let us know if you think we have accurately captured what is significant about this park.

Purpose

The purpose statement clarifies the reasons Lava Beds National Monument was established as part of the national park system and provides the foundation for management and use of the monument. The following purpose statement is based on the Presidential Proclamation that established the monument and later proclamations and laws that gave further direction to the monument.

Lava Bed National Monument's Park Purpose:

Lava Beds National Monument protects and interprets volcanic and natural features of scientific interest, and evidence of prehistoric and historic human settlement, use, and conflict.

Significance

Significance statements define what is most important about a park's resources and values and are based on the purpose for which the park was created. These statements describe the park's distinctiveness on a regional and national context. Understanding the national monument's significance helps guide and focus our decisions about managing the monument.

Lava Beds National Monument is significant because:

- Lava Beds National Monument protects and interprets one of the largest concentrations of lava tube caves in the continental U.S., along with unique environments and cave-dependent species.
 - Lava Beds National Monument protects and interprets outstanding, diverse, abundant, and well preserved lava flows, cinder cones, spatter cones, Maar volcanoes, and other volcanic features associated with the Medicine Lake shield volcano.
 - Lava Beds National Monument protects and interprets objects, major sites, and rugged volcanic landscapes associated with the 1872-73 Modoc War.
 - Lava Beds National Monument contains archeological evidence of over 11,000 years of human occupation, exceptional rock art consisting of over 5,000 petroglyphs and regionally-distinctive pictographs, and a landscape of continued significance to Modoc people as a part of their traditional homeland.
 - Lava Beds National Monument provides a wilderness experience in a unique volcanic Great Basin landscape.
 - Lava Beds National Monument protects and manages regionally representative native plant and animal species and processes.
- The following resources and values may not be fundamental to the park's purpose and significance but are nevertheless important considerations for general management planning:
- Lava Bed National Monument contains sites and resources associated with homesteading and ranching, early cave exploration and use, the Civilian Conservation Corps and park development, and war on the home front. Examples of these sites and resources include: park facilities and trails built by the Civilian Conservation Corps, homesteader buildings and roads, historic markings, Camp Lava Beds, and Caldwell Cave.



- clockwise from top left:*
- (1) Lava tube cave
 - (2) Visitors view Devil's Homestead Lava Flow
 - (3) Captain Jack's Stronghold Historic Trail
 - (4) Petroglyph carving at Petroglyph Point
 - (5) Lava Beds landscape
 - (6) An impressive variety of ferns are present in cave entrances

NPS photos

Tell us what you think!

There will be several opportunities to share your thoughts and ideas with our General Management Plan team. The table below indicates public involvement opportunities at key points in our project schedule.

We are now in the first phase of the planning process. Please let us know your thoughts, ideas and concerns on what should be addressed in the general management plan. It is important that we hear your concerns early in our planning process. The initial comment period will extend through **September 2, 2006**.

You can send us your comments by completing the enclosed comment form or by submitting your comments through our project website: <http://parkplanning.nps.gov/labe>. We will also post regular updates on the planning schedule, public meeting announcements, copies of newsletters and planning documents here.

Public Meetings. In June we will hold public meetings at several locations in the region. These meetings will provide an opportunity for you to share your thoughts, ideas, values, concerns and information now – at the beginning of the process. You will also be able to learn more about the planning process. Please refer to the dates on Page 4 for a meeting near you.

Newsletters and Website. Newsletters such as this will be distributed periodically throughout the planning process. For the most up-to-date information, you can view the project planning web page at <http://parkplanning.nps.gov/labe>. All newsletters will be posted on the planning web site.

Discussions with Groups and Organizations. Our planning team members will also meet with interested individuals, groups, agencies and organizations. The purpose of these informal discussions is to engage participants to gather and generate ideas, and to provide information about the plan's progress.

Please send comments to:

**General Management Plan Team
Lava Beds National Monument
1 Indian Well, Headquarters
Tulelake, CA 96134**

Lava Beds NM Location



General Management Plan Schedule

	Planning Activity	Dates	Public Involvement Opportunities
1	Scoping – Set the stage for planning: Reaffirm purpose, significance, and identify ideas, concerns or issues to be addressed in the GMP.	Spring to Summer 2006	Review newsletter and send us your ideas or concerns on the comment form provided or through our planning website. Attend public meetings and voice your ideas and concerns.
2	Develop and present preliminary alternatives: Outline different possible futures for the park and provide opportunities for review and comment by the public, agencies, tribes and other park stakeholders.	Spring to Fall 2007	Review newsletter and send us your ideas or concerns. Attend workshops and/or comment on the preliminary alternatives.
3	Prepare and distribute a Draft General Management Plan / Environmental Impact Statement for review and comment by the public, agencies, tribes and other park stakeholders.	Fall 2007 to Spring 2008	Review the Draft GMP/EIS and provide written comments. Attend public meetings to learn more about the draft document and to voice your ideas and concerns.
4	Revise and publish Final General Management Plan / Environmental Impact Statement: Analyze comments, respond to comments, revise draft document, distribute to the public.	Summer 2008 to Winter 2009	Review the Final GMP/EIS.
5	Implement the approved plan: Prepare and issue a "Record of Decision" finalizing the plan. Begin to implement the plan as funding allows.	Spring 2009 and beyond	Work with the park to implement the GMP. Specific implementation plans and projects will include further public involvement opportunities.



National Park Service
U.S. Department of the Interior

General Management Plan Team
Lava Beds National Monument
1 Indian Well
Headquarters
Tulelake, CA 96134

EXPERIENCE YOUR AMERICA

NEWSLETTER 1, MAY 2006

Public Meetings

This summer we are holding three public meetings to begin planning for a new general management plan for Lava Beds National Monument. The general management plan will describe a vision and goals for Lava Beds National Monument for the next 20 years. During these meetings you will have an opportunity to 1) Learn more about the general management plan process and how you can participate and 2) Discuss your ideas, thoughts and concerns about the future of Lava Beds National Monument.

If you are unable to attend the meetings, this newsletter provides you with other ways in which you can give us your comments and suggestions. We look forward to hearing from you!

Monday
June 5, 2006
7:00 - 9:00 PM

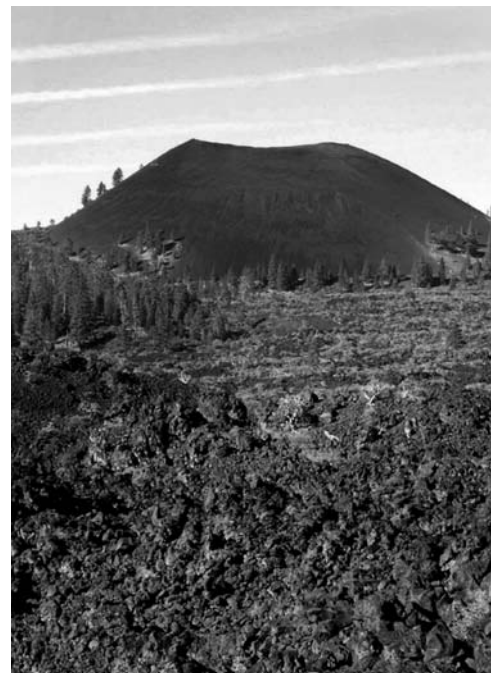
Oregon Institute of Technology
College Union, Mt. Mazama Room
3201 Campus Drive, Klamath Falls, OR

Wednesday
June 7, 2006
7:00 - 9:00 PM

Tulelake Fairgrounds, Arts and Crafts Building
800 South Main Street
Tulelake, CA

Thursday
June 8, 2006
7:00 - 9:00 PM

Yreka Community Center
810 North Oregon Street
Yreka, CA



The Callahan lava flow and cinder butte.

Contact Information

Mail: General Management Plan Team, Lava Beds National Monument, 1 Indian Well, Headquarters, Tulelake, CA 96134

Park phone numbers: 530-667-8113 / 530-667-8104 ■ Project Manager: Barbara Butler (510) 817-1322

Park Web Site: <http://www.nps.gov/labe> ■ GMP Planning Web Site: <http://parkplanning.nps.gov/labe>