

OCEAN BEACH IMMEDIATE ACTION PLAN AS-NEEDED

CITY AND COUNTY OF SAN FRANCISCO PUBLIC UTILITIES COMMISSION JANUARY 2016

NOTES:

1. ALL WORK SHALL TAKE PLACE DURING DAYLIGHT HOURS. LIGHTING OF THE BEACH AREA IS PROHIBITED.
2. UNLESS AUTHORIZED BY THE EXECUTIVE DIRECTOR, CONSTRUCTION WORK OR EQUIPMENT OPERATIONS MAY NOT BE CONDUCTED BELOW THE MEAN HIGH TIDE LINE UNLESS TIDAL WATERS HAVE RECEDED FROM THE AUTHORIZED WORK AREAS, OR IN AN EMERGENCY AS DEFINED BY COASTAL ACT REGULATIONS.
3. GRADING OF INTERTIDAL AREAS IS PROHIBITED.
4. PER APPROVAL FROM EXECUTIVE DIRECTOR ON JAN 12, 2016, TRACKED VEHICLES (INCLUDING 1 LOADER, 1 EXCAVATOR AND 1 BULLDOZER) SHALL BE ALLOWED ON THE BEACH. WHEN TRANSITING ON THE BEACH, ALL SUCH VEHICLES SHALL REMAIN AS HIGH ON THE UPPER BEACH AS POSSIBLE AND AVOID CONTACT WITH OCEAN WATERS AND INTERTIDAL AREAS.
5. ALL CONSTRUCTION MATERIALS AND EQUIPMENT PLACED ON THE BEACH DURING DAYLIGHT CONSTRUCTION HOURS SHALL BE STORED BEYOND THE REACH OF TIDAL WATERS. ALL CONSTRUCTION MATERIALS AND EQUIPMENT SHALL BE REMOVED IN THEIR ENTIRETY FROM THE BEACH AREA BY SUNSET EACH DAY THAT WORK OCCURS. THE ONLY EXCEPTIONS SHALL BE FOR EROSION AND SEDIMENT CONTROLS AND/OR CONSTRUCTION AREA BOUNDARY FENCING WHERE SUCH CONTROLS AND/OR FENCING ARE PLACED AS CLOSE TO THE SHORELINE PROTECTION AS POSSIBLE, AND THEIR EXTENT IS MINIMIZED TO THE EXTENT PRACTICABLE.
6. CONSTRUCTION (INCLUDING BUT NOT LIMITED TO CONSTRUCTION ACTIVITIES, AND MATERIALS AND/OR EQUIPMENT STORAGE) IS PROHIBITED OUTSIDE OF THE CONSTRUCTION, STAGING, AND STORAGE AREAS.
7. EQUIPMENT WASHING MAY NOT TAKE PLACE ON THE BEACH.
8. ALL BEACH AREAS, ALL BEACH ACCESS POINTS, AND ALL OTHER PUBLIC ACCESS FACILITIES (E.G., PARKING LOTS AND PATHS) IMPACTED BY CONSTRUCTION ACTIVITIES SHALL BE RESTORED TO THEIR PRE-CONSTRUCTION CONDITION OR BETTER WITHIN THREE DAYS OF COMPLETION OF CONSTRUCTION. ANY BEACH SAND IMPACTED SHALL BE FILTERED AS NECESSARY TO REMOVE ALL CONSTRUCTION DEBRIS FROM THE BEACH.
9. IMPACTS TO WESTERN SNOWY PLOVERS AND BANK SWALLOWS SHALL BE AVOIDED. DIRECTIONS FROM CITY PROVIDED BIOLOGIST ON WESTERN SNOWY PLOVER AND BANK SWALLOW PROTECTIONS SHALL BE FOLLOWED.

SURVEY CONTROL:

HORIZONTAL: THE HORIZONTAL POSITION OF THE POINTS ARE BASED ON CA STATE PLANE (EPOCH 2010), ZONE 3 WITH A COMBINED FACTOR OF 0.9999329 AND A CONVERGENCE ANGLE -1°13'53". POINT HELD 941 429 N TIDAL

VERTICAL: POINTS WERE INITIALLY COLLECTED ON THE CITY AND COUNTY OF SAN FRANCISCO (CCSF) VERTICAL DATUM BY THE SURVEYOR. POINTS SHOWN ON THE DRAWINGS HAVE BEEN ADJUSTED TO MEAN LOWER LOW WATER (MLLW). TO CONVERT FROM MLLW TO THE CCSF DATUM, SUBTRACT 11.666'. CONVERSION FACTOR BETWEEN MLLW AND CCSF DATUMS PROVIDED BY MOFFATT & NICHOL IN AN EMAIL DATED 17 JULY 2012.

CCSF BENCHMARK DATA: THE CCSF BENCHMARK USED WAS A CROW CUT ON THE OUTER RIM OF A STORM WATER INLET AT THE SOUTH EAST CORNER OF THE GREAT HIGHWAY AND BALBOA STREET. ELEVATION = 14.525'.

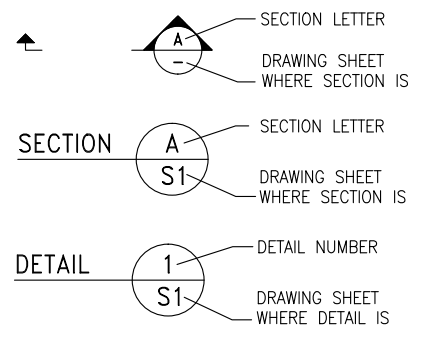
SOURCE: SURVEY PERFORMED BY MERIDIAN SURVEYING ENGINEERING, INC (DATED OCT/NOV 2015).

PLOT: EXTENTS
SCALE: 1:1
BORDER:
22,34
COLOR: No.
RED 0.70MM
YELLOW 0.20MM
GREEN 0.25MM
CYAN 0.40MM
BLUE 0.50MM
MAGENTA 0.20MM
WHITE 0.35MM
GRAY 0.15MM
9 0.15MM
10 1.00MM
100 0.50MM
210 0.50MM

SHEET INDEX

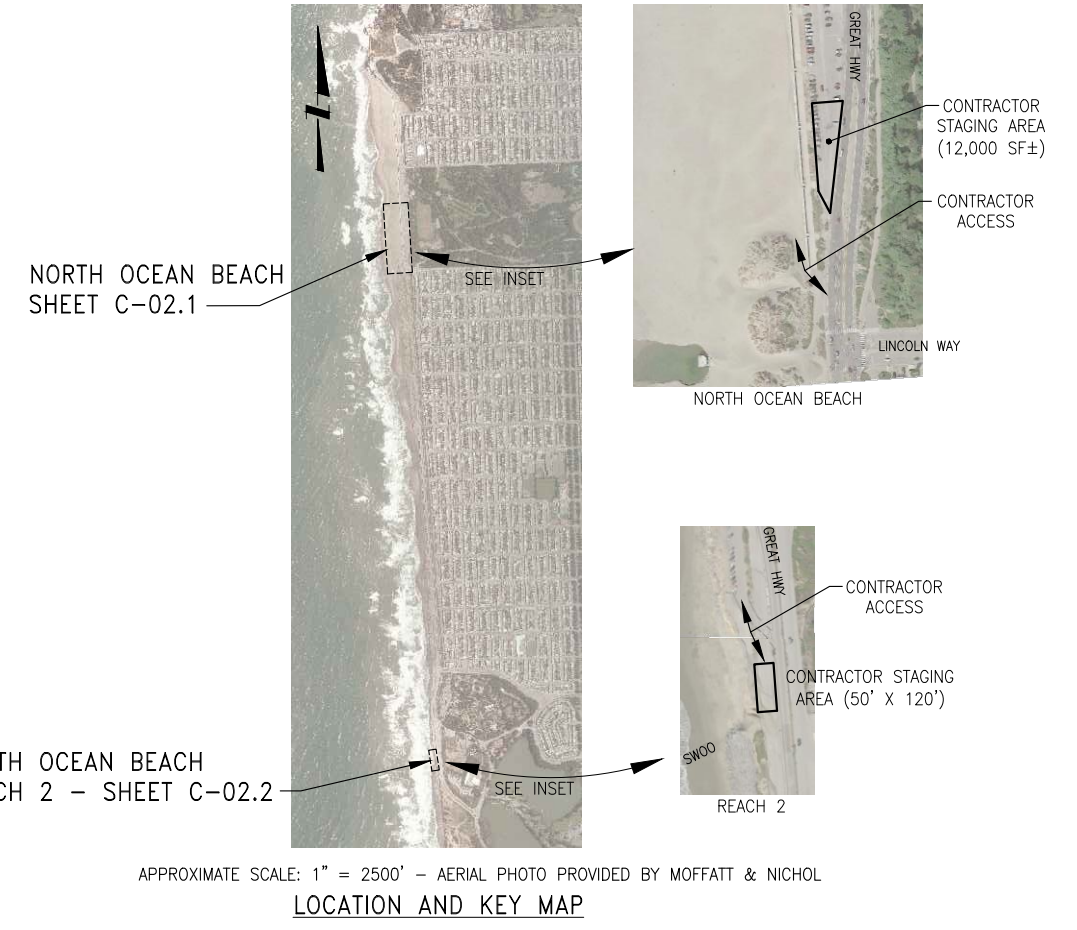
SHEET NO.	DRAWING NO.	DESCRIPTION
<u>GENERAL</u>		
1	G-01.1	TITLE SHEET - WINTER 2016
<u>CIVIL</u>		
2	C-02.1	NORTH OCEAN BEACH / EXCAVATION PLAN - WINTER 2016
3	C-02.2	SOUTH OCEAN BEACH / REACH 2 PLAN - WINTER 2016
4	C-03.1	NORTH OCEAN BEACH / EXCAVATION SECTIONS - WINTER 2016
5	C-03.2	SOUTH OCEAN BEACH / REACH 2 SECTIONS - WINTER 2016
6	C-04	SANDBAGS DETAILS
7	C-05	SOUTH OCEAN BEACH / REACH 2 SITE IMPROVEMENTS - WINTER 2016

LEGEND



ABBREVIATIONS:

@	AT	MLLW	MEAN LOWER LOW WATER
&	AND	N	NORTH
⊕	CENTERLINE	NTS	NOT TO SCALE
(E)	EXISTING	OG	ORIGINAL GRADE
EL	ELEVATION	RD	ROAD
FG	FINISH GRADE	S	SOUTH
H	HORIZONTAL	SWOO	SOUTHWEST OCEAN OUTFALL
MHT	MEAN HIGH TIDE	TYP	TYPICAL
MHW	MEAN HIGH WATER	V	VERTICAL

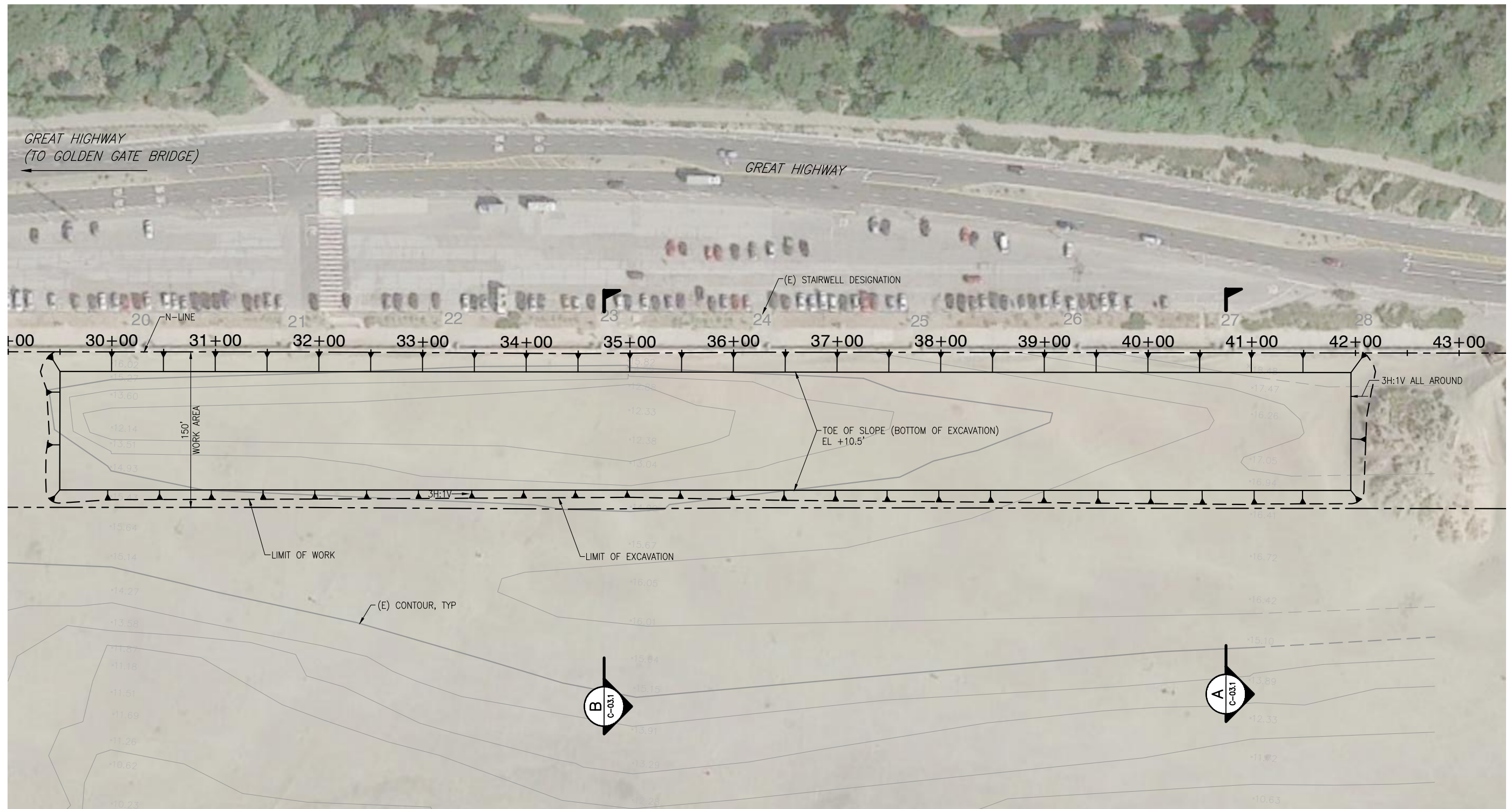


FOR THE SOLE USE OF THE DOCUMENT RECIPIENT - DO NOT CITE, COPY, OR CIRCULATE WITHOUT THE EXPRESS PERMISSION OF THE SFPUC.

ELEVATION DATUM
MLLW

moffatt & nichol		2185 N. CALIFORNIA BLVD SUITE 500 WALNUT CREEK, CA 94598 (925) 944-5411	
PROJECT ENGINEER AJ	DRAWN NK	DESIGNED AJ	CHECKED / APPROVED
PROJECT MANAGER NN	DESIGNED AJ	CHECKED NN	DRAWN
APPROVAL DT	CHECKED NN		
1 1/8/16 T.O.-01 NEW DRAWING		AJ	NN
NO.	DATE	DESCRIPTION	BY
REVISIONS			

CONTRACT NO. WW-607			
CITY AND COUNTY OF SAN FRANCISCO PUBLIC UTILITIES COMMISSION INFRASTRUCTURE DIVISION ENGINEERING MANAGEMENT BUREAU			
OCEAN BEACH IMMEDIATE ACTION PLAN AS-NEEDED			
TITLE SHEET - WINTER 2016			
CHECKED / APPROVED	DRAWN	SCALE	DATE
SECTION MANAGER	DESIGNED	AS SHOWN	JAN 2016
MAINTENANCE ENGINEERING MANAGER			
APPROVED	APPROVED		
MANAGER, ENGINEERING MANAGEMENT BUREAU	DIVISION MANAGER, WASTEWATER ENTERPRISE		
PLAN NO. G-01.1	DRAWING/FILE NO. WW8763.1	REVISION NO. 1	

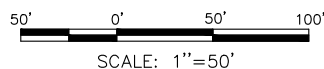


PLAN

SCALE: 1" = 50'

NOTES:

1. NOT ALL BURIED AND EXPOSED UTILITIES AND APPURTENANCES ARE SHOWN. A SEARCH FOR BURIED UTILITIES AT THE PROJECT SITE HAS NOT BEEN UNDERTAKEN. THEREFORE, ALL SUBSURFACE WORK SHALL PROCEED WITH CAUTION DUE TO POSSIBLE PRESENCE OF UNIDENTIFIED UTILITIES. CONTRACTOR SHALL CONTACT USA NORTH AT 811 OR 1-800-227-2600 A MINIMUM OF TWO WORKING DAYS PRIOR TO EXCAVATION OR DRILLING ACTIVITIES.
2. EXISTING CONTOURS SHOWN ARE APPROXIMATE AND ARE BASED ON SURVEY POINTS TAKEN OCTOBER/NOVEMBER 2015 BY MERIDIAN SURVEYING ENGINEERING.



FOR THE SOLE USE OF THE DOCUMENT
RECIPIENT - DO NOT CITE, COPY, OR
CIRCULATE WITHOUT THE EXPRESS
PERMISSION OF THE SFPUC.

ELEVATION
DATUM

MLLW

CONTRACT NO. WW-607

CITY AND COUNTY OF SAN FRANCISCO
PUBLIC UTILITIES COMMISSION
INFRASTRUCTURE DIVISION
ENGINEERING MANAGEMENT BUREAU

OCEAN BEACH IMMEDIATE ACTION PLAN AS-NEEDED

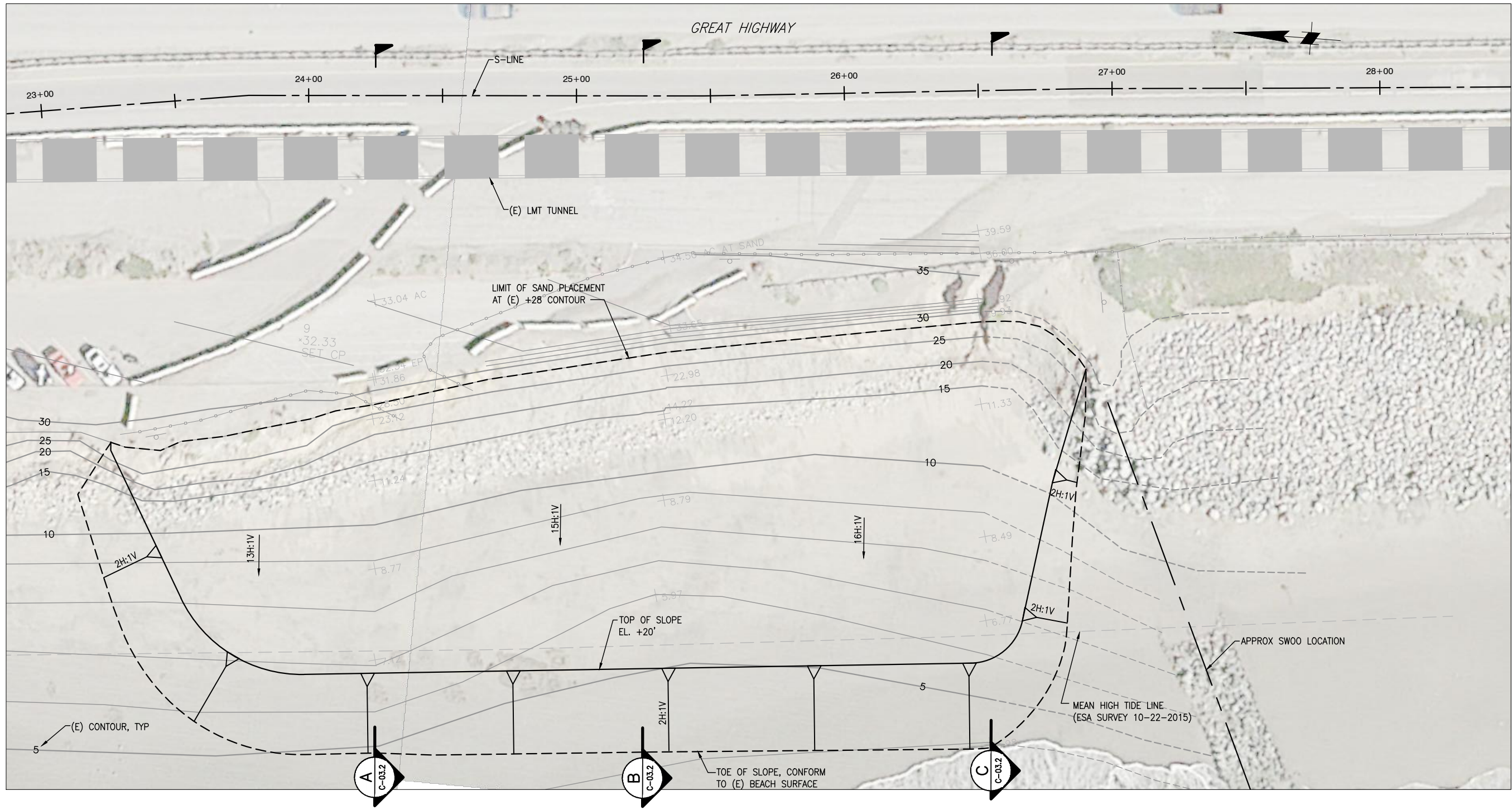
NORTH OCEAN BEACH
EXCAVATION PLAN- WINTER 2016

moffatt & nichol
2185 N. CALIFORNIA BLVD
SUITE 500
WALNUT CREEK, CA 94596
(925) 944-5411

PROJECT ENGINEER AJ	DRAWN NK															
PROJECT MANAGER NN	DESIGNED AJ															
APPROVAL DT	CHECKED NN															
<table border="1"> <tr> <th>NO.</th> <th>DATE</th> <th>DESCRIPTION</th> <th>BY</th> <th>APPR'D</th> </tr> <tr> <td>1</td> <td>1/8/16</td> <td>T.O.-01 NEW DRAWING</td> <td>AJ</td> <td>NN</td> </tr> <tr> <th colspan="5">REVISIONS</th> </tr> </table>		NO.	DATE	DESCRIPTION	BY	APPR'D	1	1/8/16	T.O.-01 NEW DRAWING	AJ	NN	REVISIONS				
NO.	DATE	DESCRIPTION	BY	APPR'D												
1	1/8/16	T.O.-01 NEW DRAWING	AJ	NN												
REVISIONS																

CHECKED / APPROVED	DRAWN
SECTION MANAGER	DESIGNED
MAINTENANCE ENGINEERING MANAGER	SCALE AS SHOWN
APPROVED	DATE JAN 2016
APPROVED	APPROVED
MANAGER, ENGINEERING MANAGEMENT BUREAU	DIVISION MANAGER, WASTEWATER ENTERPRISE
PLAN NO. C-02.1	DRAWING/FILE NO. WW8764.1
	REVISION NO. 1

PLOT: EXTENTS
SCALE: 1:1
BORDER:
22,34
COLOR: No.
RED 0.70MM
YELLOW 0.20MM
GREEN 0.25MM
CYAN 0.40MM
BLUE 0.50MM
MAGENTA 0.20MM
WHITE 0.35MM
GRAY 0.15MM
9 0.15MM
10 1.00MM
100 0.50MM
210 0.50MM



PLAN

SCALE: 1" = 40'

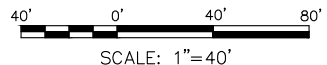
NOTES:

- NOT ALL BURIED AND EXPOSED UTILITIES AND APPURTENANCES ARE SHOWN. A SEARCH FOR BURIED UTILITIES AT THE PROJECT SITE HAS NOT BEEN UNDERTAKEN. THEREFORE, ALL SUBSURFACE WORK SHALL PROCEED WITH CAUTION DUE TO POSSIBLE PRESENCE OF UNIDENTIFIED UTILITIES. CONTRACTOR SHALL CONTACT USA NORTH AT 811 OR 1-800-227-2600 A MINIMUM OF TWO WORKING DAYS PRIOR TO EXCAVATION OR DRILLING ACTIVITIES.
- EXISTING CONTOURS SHOWN ARE APPROXIMATE AND ARE BASED ON SURVEY POINTS TAKEN OCTOBER/NOVEMBER 2015 BY MERIDIAN SURVEYING ENGINEERING.

PLOT: EXTENTS
SCALE: 1:1
BORDER: 22,34

COLOR: No.

RED	0.70MM
YELLOW	0.20MM
GREEN	0.25MM
CYAN	0.40MM
BLUE	0.50MM
MAGENTA	0.20MM
WHITE	0.35MM
GRAY	0.15MM
9	0.15MM
10	1.00MM
100	0.50MM
210	0.50MM



FOR THE SOLE USE OF THE DOCUMENT RECIPIENT - DO NOT CITE, COPY, OR CIRCULATE WITHOUT THE EXPRESS PERMISSION OF THE SFPUC.

ELEVATION DATUM
MLLW

CONTRACT NO. WW-607

CITY AND COUNTY OF SAN FRANCISCO
PUBLIC UTILITIES COMMISSION
INFRASTRUCTURE DIVISION
ENGINEERING MANAGEMENT BUREAU

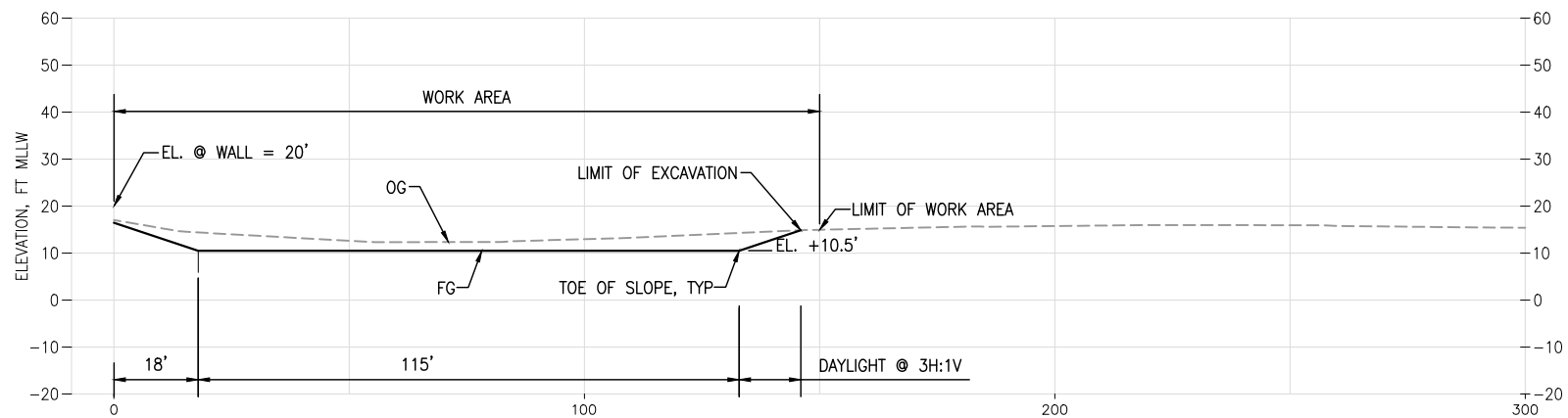
OCEAN BEACH IMMEDIATE ACTION PLAN AS-NEEDED

SOUTH OCEAN BEACH
REACH 2 PLAN - WINTER 2016

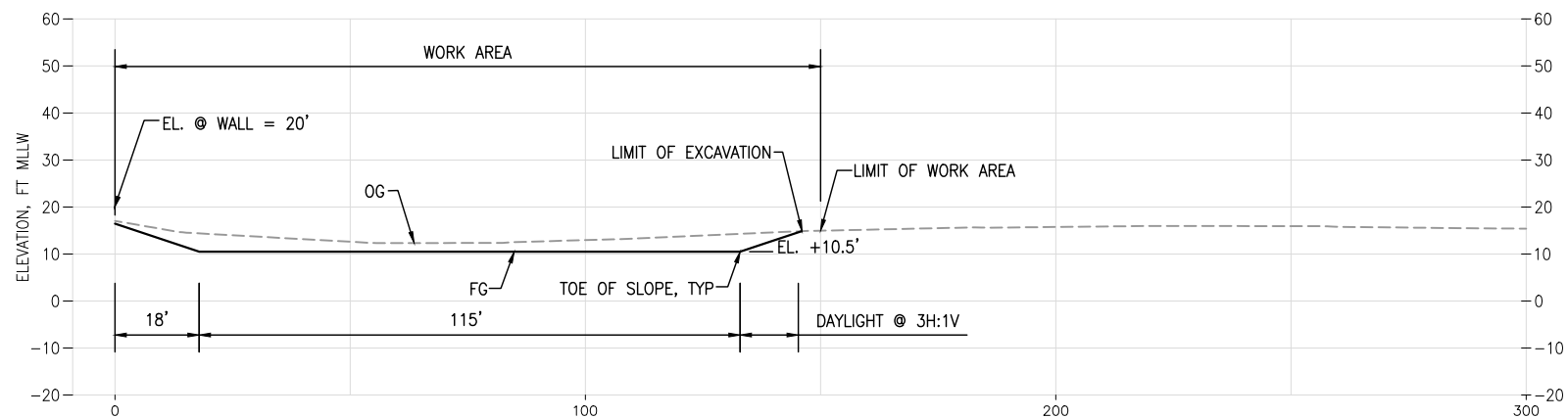
moffatt & nichol
2185 N. CALIFORNIA BLVD
SUITE 500
WALNUT CREEK, CA 94596
(925) 944-5411

PROJECT ENGINEER AJ	DRAWN NK										
PROJECT MANAGER NN	DESIGNED AJ										
APPROVAL DT	CHECKED NN										
<table border="1"> <tr> <th>NO.</th> <th>DATE</th> <th>DESCRIPTION</th> <th>BY</th> <th>APPR'D</th> </tr> <tr> <td>1</td> <td>1/8/16</td> <td>T.O.-01 NEW DRAWING</td> <td>AJ</td> <td>NN</td> </tr> </table>		NO.	DATE	DESCRIPTION	BY	APPR'D	1	1/8/16	T.O.-01 NEW DRAWING	AJ	NN
NO.	DATE	DESCRIPTION	BY	APPR'D							
1	1/8/16	T.O.-01 NEW DRAWING	AJ	NN							
REVISIONS											

CHECKED / APPROVED	DRAWN
SECTION MANAGER	DESIGNED
MAINTENANCE ENGINEERING MANAGER	SCALE AS SHOWN
DATE	JAN 2016
APPROVED	APPROVED
MANAGER, ENGINEERING MANAGEMENT BUREAU	DIVISION MANAGER, WASTEWATER ENTERPRISE
PLAN NO. C-02.2	DRAWING/FILE NO. WW8764.2
REVISION NO. 1	



B SECTION - STA 34+75 (N-LINE)
 C-02.1 SCALE: 1" = 20'



C SECTION - STA 40+75 (N-LINE)
 C-02.1 SCALE: 1" = 20'

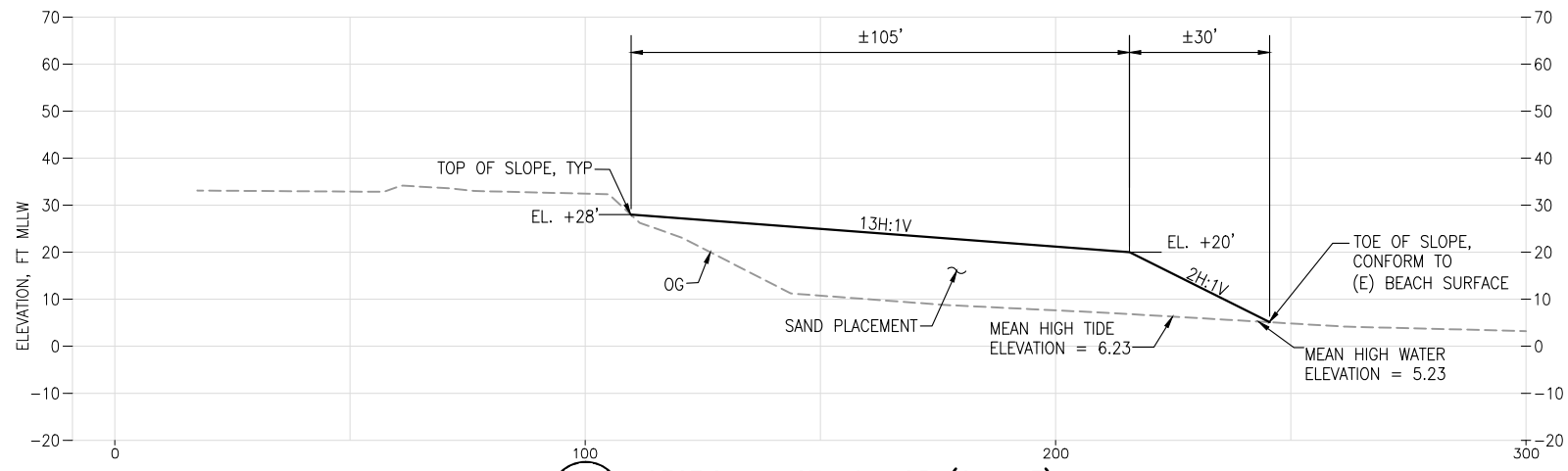
PLOT: EXTENTS
 SCALE: 1:1
 BORDER:
 22,34
 COLOR: No.
 RED 0.70MM
 YELLOW 0.20MM
 GREEN 0.25MM
 CYAN 0.40MM
 BLUE 0.50MM
 MAGENTA 0.20MM
 WHITE 0.35MM
 GRAY 0.15MM
 9 0.15MM
 10 1.00MM
 100 0.50MM
 210 0.50MM

FOR THE SOLE USE OF THE DOCUMENT
 RECIPIENT - DO NOT CITE, COPY, OR
 CIRCULATE WITHOUT THE EXPRESS
 PERMISSION OF THE SFPUC.

ELEVATION
 DATUM
 MLLW

		2185 N. CALIFORNIA BLVD SUITE 500 WALNUT CREEK, CA 94598 (925) 944-5411	
PROJECT ENGINEER AJ	DRAWN NK	CHECKED / APPROVED	DRAWN
PROJECT MANAGER NN	DESIGNED AJ	SECTION MANAGER	DESIGNED
APPROVAL DT	CHECKED NN	MAINTENANCE ENGINEERING MANAGER	SCALE AS SHOWN DATE JAN 2016
1 1/8/16 T.O.-01 NEW DRAWING NO. DATE DESCRIPTION BY APPR'D		APPROVED	APPROVED
REVISIONS		MANAGER, ENGINEERING MANAGEMENT BUREAU	DIVISION MANAGER, WASTEWATER ENTERPRISE

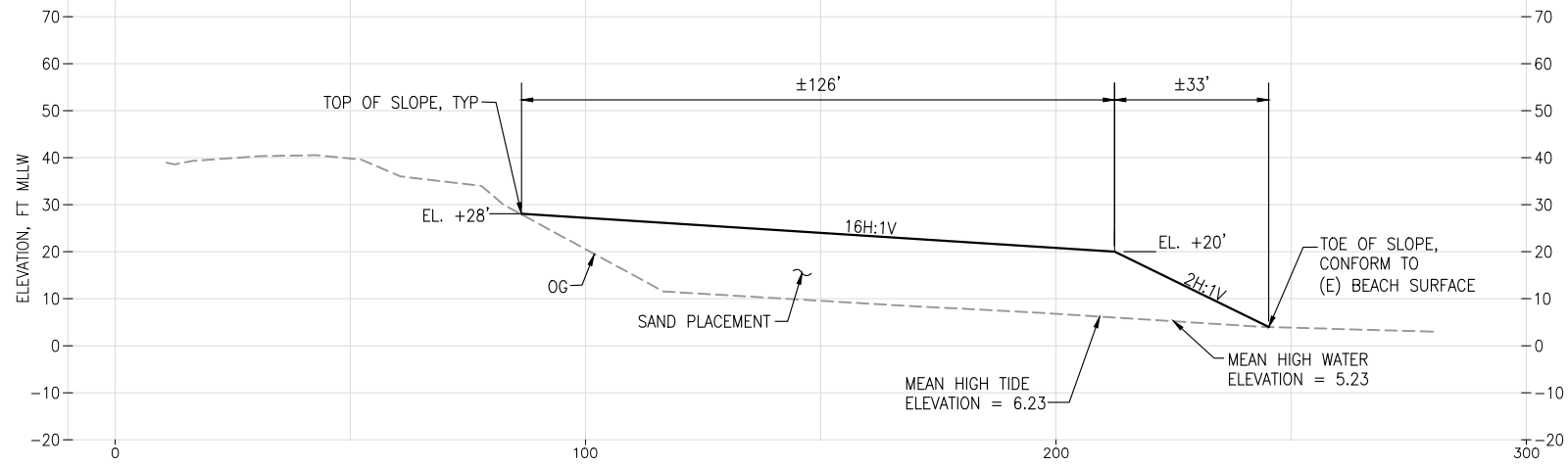
CONTRACT NO. WW-607 CITY AND COUNTY OF SAN FRANCISCO PUBLIC UTILITIES COMMISSION INFRASTRUCTURE DIVISION ENGINEERING MANAGEMENT BUREAU			
OCEAN BEACH IMMEDIATE ACTION PLAN AS-NEEDED			
NORTH OCEAN BEACH EXCAVATION SECTIONS - WINTER 2016			
PLAN NO. C-03.1		DRAWING/FILE NO. WW8765.1	
REVISIONS		REVISION NO. 1	



A SECTION - STA 24+25 (S-LINE)
 C-02.2 SCALE: 1" = 20'

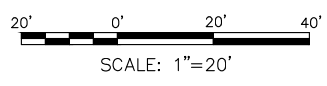


B SECTION - STA 25+25 (S-LINE)
 C-02.2 SCALE: 1" = 20'



C SECTION - STA 26+50 (S-LINE)
 C-02.2 SCALE: 1" = 20'

- PLOT: EXTENTS
 SCALE: 1:1
 BORDER: 22,34
 COLOR: No.
 RED 0.70MM
 YELLOW 0.20MM
 GREEN 0.25MM
 CYAN 0.40MM
 BLUE 0.50MM
 MAGENTA 0.20MM
 WHITE 0.35MM
 GRAY 0.15MM
 9 0.15MM
 10 1.00MM
 100 0.50MM
 210 0.50MM



**FOR THE SOLE USE OF THE DOCUMENT
 RECIPIENT - DO NOT CITE, COPY, OR
 CIRCULATE WITHOUT THE EXPRESS
 PERMISSION OF THE SFPUC.**

**ELEVATION
 DATUM**
 MLLW

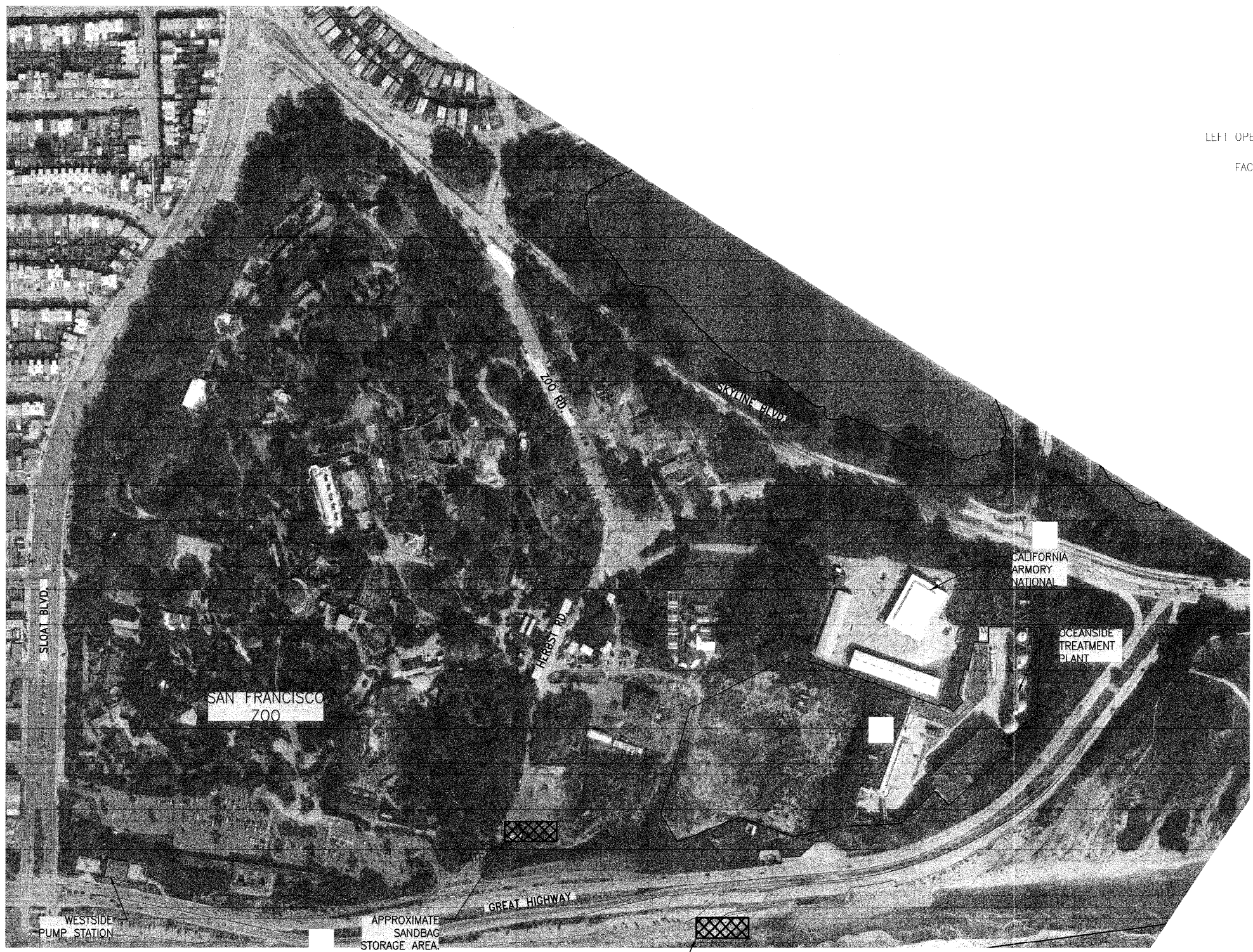
		2185 N. CALIFORNIA BLVD SUITE 500 WALNUT CREEK, CA 94598 (925) 944-5411	
PROJECT ENGINEER AJ	DRAWN NK	CHECKED / APPROVED	DRAWN
PROJECT MANAGER NN	DESIGNED AJ	SECTION MANAGER	DESIGNED
APPROVAL DT	CHECKED NN	MAINTENANCE ENGINEERING MANAGER	SCALE AS SHOWN DATE JAN 2016
1 1/8/16 T.O.-01 NEW DRAWING		APPROVED	APPROVED
NO.	DATE	DESCRIPTION	BY APPR'D
REVISIONS			

CONTRACT NO. WW-607
 CITY AND COUNTY OF SAN FRANCISCO
PUBLIC UTILITIES COMMISSION
 INFRASTRUCTURE DIVISION
 ENGINEERING MANAGEMENT BUREAU

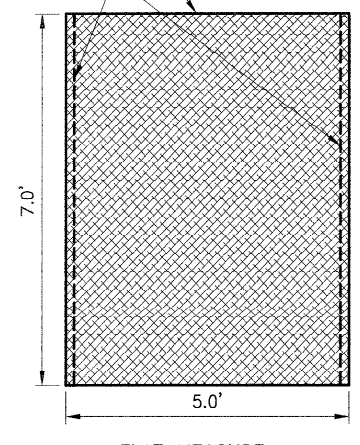
OCEAN BEACH IMMEDIATE ACTION PLAN AS-NEEDED

SOUTH OCEAN BEACH
 REACH 2 SECTIONS - WINTER 2016

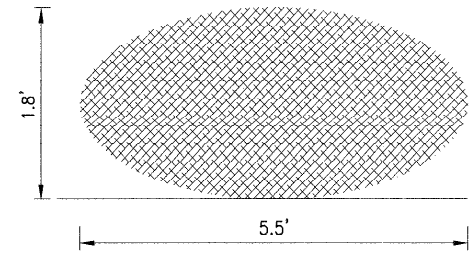
MANAGER, ENGINEERING MANAGEMENT BUREAU	DIVISION MANAGER, WASTEWATER ENTERPRISE
PLAN NO. C-03.2	DRAWING/FILE NO. WW8765.2
	REVISION NO. 1



LEFT OPEN FOR FIELD SEWING
FACTORY SEWN SEAMS



FLAT MEASURE



TYPICAL FILLED CROSS SECTION

SANDBAG
SCALE : N.T.S.



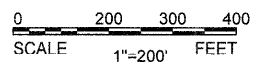
NOTE:

- SANDBAG SHALL BE MACCAFERRI MACBAG OS150 OR APPROVED EQUAL.
- CONTRACTOR IS RESPONSIBLE FOR FILLING, SEWING, AND STOCKPILING THE BAGS FOR USE.

NOTES:

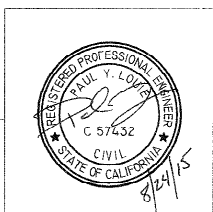
- ACCESS TO SANDBAG STORAGE AREA SHALL BE THROUGH THE IDENTIFIED GATE. CONTRACTOR SHALL BE AWARE OF THE ALLOWABLE TURNING MOVEMENTS WHEN ACCESSING THIS AREA. CONTRACTOR COORDINATE THIS WORK WITH THE CITY REPRESENTATIVE AT LEAST FIVE WORKING DAYS IN ADVANCE.

PLOT: EXTENTS
SCALE: 1:1
BORDER:
22.34
COLOR: No.
RED 0.70MM
YELLOW 0.20MM
GREEN 0.25MM
CYAN 0.40MM
BLUE 0.50MM
MAGENTA 0.20MM
WHITE 0.35MM
GRAY 0.15MM
9 0.15MM
10 1.00MM
100 0.50MM
210 0.50MM



FOR THE SOLE USE OF THE DOCUMENT
RECIPIENT - DO NOT CITE, COPY, OR
CIRCULATE WITHOUT THE EXPRESS
PERMISSION OF THE SFPUC.

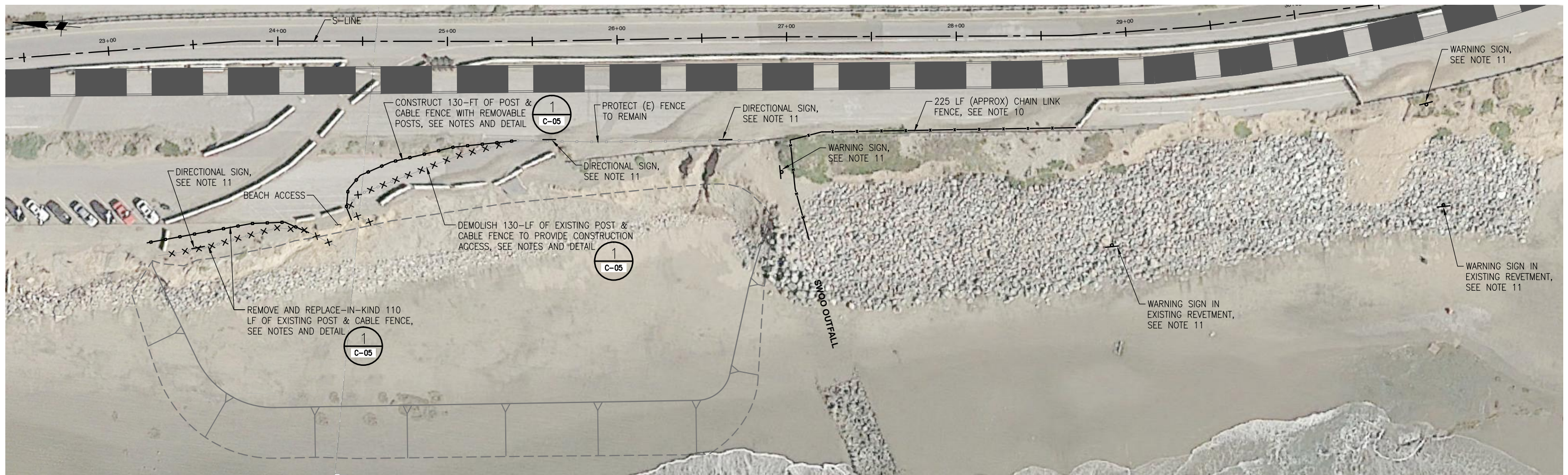
ELEVATION
DATUM
CITY DATUM



NO.	DATE	DESCRIPTION	BY	APPR'D
REVISIONS				

CONTRACT NO. WW-607

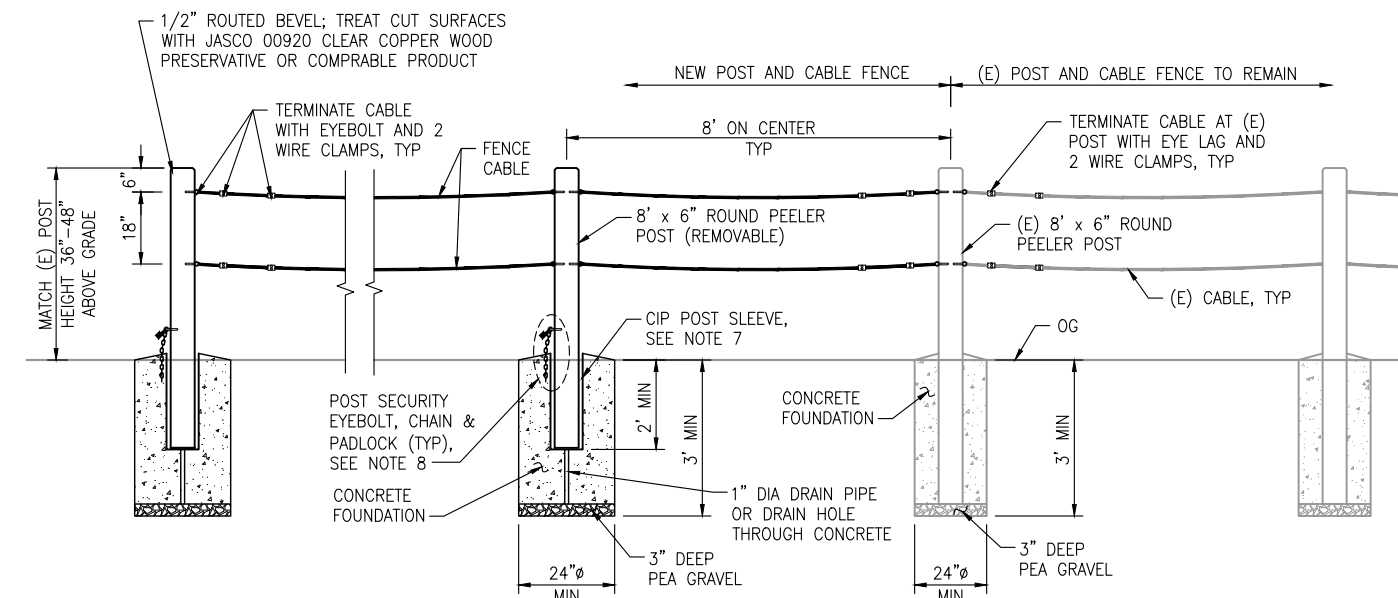
CITY AND COUNTY OF SAN FRANCISCO PUBLIC UTILITIES COMMISSION INFRASTRUCTURE DIVISION ENGINEERING MANAGEMENT BUREAU			
OCEAN BEACH IMMEDIATE ACTION PLAN AS-NEEDED			
SANDBAGS DETAILS			
CHECKED / APPROVED LAV/SH	DRAWN		
SECTION MANAGER C. Jones	DESIGNED		
WWE O&M MANAGER D.V. Garcia	SCALE AS SHOWN	DATE AUG 2015	
APPROVED [Signature]	APPROVED		
MANAGER, ENGINEERING MANAGEMENT BUREAU	WWE ENGINEERING MANAGER		
PLAN NO. C-04	DRAWING/FILE NO.	REVISION NO. 0	



PLAN
SCALE: 1" = 30'

NOTES:

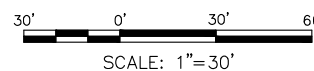
1. 8' x 6" ROUND PEELER POST, DOUG-FIR, ACQ GREEN PRESSURE TREATED.
2. 3/8" GALVANIZED BLACK VINYL-COATED WIRE CABLE (TOTAL OUTER DIAMETER = 7/16").
3. 3/8" G-450 (IMPORTED) WIRE ROPE CLAMP.
4. EYEBOLT AND POST SECURITY EYEBOLT: 3/8" x 2 1/2" GALVANIZED SHOULDER EYE TYPE LAG BOLT. LOCATE POST SECURITY EYEBOLT 6" ABOVE CONCRETE SURFACE.
5. COPPER NAPHTENATE OR EQUIVALENT FUNGI/INSECTICIDE WOOD PRESERVATIVE TREATMENT.
6. ALL CUT LUMBER ENDS ARE TO BE TREATED WITH COPPER NAPHTENATE OR EQUIVALENT FUNGI/INSECTICID.
7. EMBED REMOVABLE POSTS IN PVC SLEEVE AS SHOWN.
 - A. TOP OF SLEEVE SHALL BE FLUSH WITH THE CONCRETE SURFACE.
 - B. SLEEVE SHALL BE SCH 40 PVC AND SHALL HAVE 1" DIA HOLE IN BOTTOM FOR DRAINAGE. ALIGN DRAINPIPE WITH DRAIN HOLE.
 - C. SHIM POST AS NEEDED TO ENSURE SECURE FIT WITHIN POST SLEEVE. SHIMS MAY BE EXTERIOR-GRADE TIMBER OR POLYPROPYLENE. TRIM SHIMS FLUSH WITH TOP OF SLEEVE.
8. EMBED 3/16" GR 30 HOT DIP GALVANIZED CHAIN INTO CONCRETE FOOTING. LOCATE CHAIN 1" FROM PVC SLEEVE AND EMBED 5" DEEP INTO CONCRETE. PROVIDE 6" NOMINAL LENGTH OF CHAIN ABOVE CONCRETE SURFACE OR MINIMUM LENGTH THAT IS SUFFICIENT TO ALLOW SECURING TO POST SECURITY EYEBOLT WITH PADLOCK. PADLOCK SHALL BE KEYED, EXTERIOR-GRADE STAINLESS STEEL, AND SHALL BE APPROVED BY SFPUC PRIOR TO PROCUREMENT.
9. INSTALL WIRE ROPE CLAMPS AT TERMINAL END. INSTALL A WIRE ROPE CLAMP ON BOTH SIDES OF EVERY 8TH POST.
10. POST AND CABLE FENCE ALIGNMENT AND CHAIN LINK FENCE ALIGNMENT ARE SCHEMATIC AND WILL BE CONFIRMED IN THE FIELD IN COORDINATION WITH THE NPS AND SFPUC.
11. WARNING SIGNS SHALL BE 12" X 18" AND MOUNTED ON 2" DIA SCH 40 GALVANIZED STEEL POST. EMBED POST IN 24" DEEP X 8" DIA CONCRETE FOOTING. SIGN SHALL BE HAVE 36" VERTICAL CLEARANCE ABOVE GROUND SURFACE. DIRECTIONAL SIGNS SHALL BE MOUNTED TO TIMBER POSTS WITH 316 SS SCREWS.



NOTE: DIRECTIONAL SIGN NOT SHOWN FOR CLARITY.

ELEVATION

1 POST AND CABLE FENCE
C-05 NTS



FOR THE SOLE USE OF THE DOCUMENT RECIPIENT - DO NOT CITE, COPY, OR CIRCULATE WITHOUT THE EXPRESS PERMISSION OF THE SFPUC.

ELEVATION DATUM
MLLW



2 SIGNS
C-05 NTS

PLOT: EXTENTS
SCALE: 1:1
BORDER:
22,34
COLOR: No.
RED 0.70MM
YELLOW 0.20MM
GREEN 0.25MM
CYAN 0.40MM
BLUE 0.50MM
MAGENTA 0.20MM
WHITE 0.35MM
GRAY 0.15MM
9 0.15MM
10 1.00MM
100 0.50MM
210 0.50MM

		2185 N. CALIFORNIA BLVD SUITE 500 WALNUT CREEK, CA 94598 (925) 944-5411	
PROJECT ENGINEER	AJ	DRAWN	NK
PROJECT MANAGER	NN	DESIGNED	AJ
APPROVAL	DT	CHECKED	NN
1 1/8/16 T.O.-01 NEW DRAWING		AJ NN	
NO.	DATE	DESCRIPTION	BY
REVISIONS			

CONTRACT NO. WW-607 CITY AND COUNTY OF SAN FRANCISCO PUBLIC UTILITIES COMMISSION INFRASTRUCTURE DIVISION ENGINEERING MANAGEMENT BUREAU			
OCEAN BEACH IMMEDIATE ACTION PLAN AS-NEEDED			
SOUTH OCEAN BEACH POST & CABLE FENCE - WINTER 2016			
CHECKED / APPROVED	DRAWN		
SECTION MANAGER	DESIGNED		
MAINTENANCE ENGINEERING MANAGER	SCALE	AS SHOWN	DATE
			JAN 2016
APPROVED	APPROVED		
MANAGER, ENGINEERING MANAGEMENT BUREAU	DIVISION MANAGER, WASTEWATER ENTERPRISE		
PLAN NO.	C-05	DRAWING/FILE NO.	WW8766.1
		REVISION NO.	1