

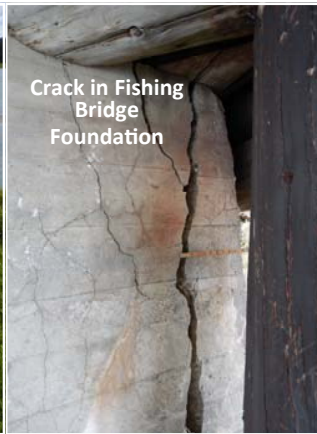


Fishing Bridge



Pelican Creek Bridge

Deteriorated Concrete and Exposed Reinforcing Bar



Crack in Fishing Bridge Foundation



Fishing Bridge Driving Surface

Yellowstone National Park

Idaho, Montana, Wyoming

National Park Service
U.S. Department of the Interior



Proposal to Reconstruct the East Entrance Road from Fishing Bridge to Indian Pond

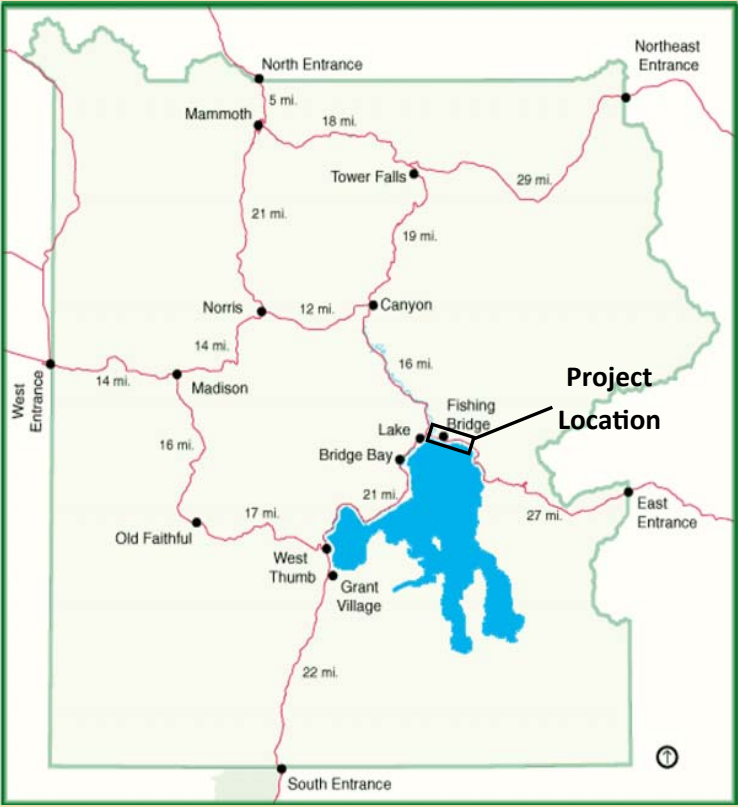
Project Scoping

February 2016

Dear Interested Party:

The National Park Service (NPS), in cooperation with the Federal Highway Administration (FHWA), is planning to reconstruct a segment of the East Entrance Road from Fishing Bridge to Indian Pond (3.2 miles) within the eastern portion of Yellowstone National Park. The project would reconstruct the road, associated parking areas and turnouts, and Pelican Creek Bridge. Fishing Bridge will also be considered for rehabilitation or replacement. This scoping notice is to inform you of the proposed project and to seek your input.

The East Entrance Road connects the central portion of Yellowstone and the Grand Loop Road system to U.S. Highway 14/20 and it provides an important connection to Cody and other communities in Central Wyoming. The segment of the East Entrance Road between Fishing Bridge and Indian Pond is in an advanced state of deterioration and has seen a substantial increase in vehicle use since the 1980's. The road also includes areas that do not meet modern engineering safety standards. Pelican Creek Bridge and Fishing Bridge, built in the 1930s, are beyond their design life and are in need of replacement or rehabilitation.



Fishing Bridge

The National Park Service encourages public participation throughout the NEPA process during which the public has two opportunities to formally comment on the project; once during initial project scoping and again following release of the Environmental Assessment. We are currently in the scoping phase of this project, and I invite you to voice your ideas, comments, or concerns in this effort. These comments will be considered during preparation of the Environmental Assessment. I look forward to hearing from you.

Sincerely,

Daniel N. Wenk
Superintendent
Yellowstone National Park

Why is the Project Needed?

The East Entrance Road segment between Fishing Bridge and Indian Pond is in an advanced state of deterioration and has seen an increase in vehicle use since the 1980s. The road also includes areas that do not meet engineering safety standards. Pelican Creek Bridge and Fishing Bridge, built in the 1930s, are beyond their design life and are in need of replacement or rehabilitation.



What Can Be Done?

The National Park Service (NPS) and the Federal Highway Administration (FHWA) are considering the following Alternatives for the Fishing Bridge to Indian Pond Project:

No Action Alternative (“status quo”) - The road, bridges, and parking areas would remain unchanged and would continue to deteriorate. Periodic maintenance would be performed by the park to maintain the road and bridges as much as possible.

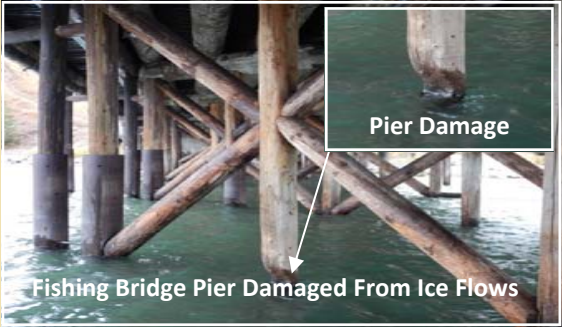
Build Alternative - This alternative would:

- Reconstruct the road from the Fishing Bridge area to Indian Pond to a consistent 30 foot width (11 foot travel lanes and 4 foot shoulders) consistent with the 24 miles already reconstructed.
- Reconstruction of General Store Parking Area
- Repave the Visitor Center Parking Area
- Construct a turn lanes within the Fishing Bridge developed area

- Explore four options for Fishing Bridge and Pelican Creek Bridge:
 - No repairs and implement vehicle weight and speed restrictions
 - Heavy rehabilitation
 - Replace the bridge(s) on its current alignment
 - Replace the bridge(s) on a new alignment

What is the Process?

An Environmental Assessment will be prepared in compliance with the National Environmental Policy Act and Section 106 of the National Historic Preservation Act. The park is reaching out to the public, asking them to share their comments, concerns, and ideas which will be used to aid in the development of a range of alternatives as part of the planning process.



- The Environmental Process will include the following steps (“*” indicates opportunities for public comment):
- Public Scoping (Closes March 15, 2016)*
 - Preparation of the Environmental Assessment
 - Public Review of the Environmental Assessment*
 - Analysis of Public Comments
 - Preparation of a decision document
 - Announcement of decision

What are the Resources of Concern?

The Environmental Assessment will analyze potential impacts to a number of resources including:

- Health and Safety
- Water Resources, Floodplains, and Wetlands
- Cultural and Historic Resources
- Wildlife and Species of Special Concern
- Visitor Use and Experience
- Geology, Soils, and Vegetation
- Park Operations



We Need Your Input!

The NPS and the FHWA are in the early stages of developing the proposed road reconstruction project. There may be other issues that are unknown at this time so we are asking for your input.

1. Do you have any ideas to share about issues/concerns, or are there any issues/concerns about the project that you think we should consider?
2. Are there any other alternatives that you think should be considered?
3. Do you have other comments and suggestions for us to consider in the environmental assessment?

How do I provide Input On this Project?

Please submit your comments online at the National Park Service Planning, Environment, and Public Comment Website: <http://parkplanning.nps.gov/FBIP>

If you are unable to submit your comments online through this website, then you may also submit written comments Attention To:

Fishing Bridge to Indian Pond Road Reconstruction
Yellowstone National Park
P.O. Box 168
Attn: Compliance Office
Yellowstone National Park, Wyoming 82190

You may also hand deliver written comments to the Albright Visitor Center at Yellowstone National Park.

Please provide all comments by March 15, 2016. If you wish to be added to the Park’s mailing list for future correspondence, please indicate that in your response.

Before including your address, phone number, e-mail address, or other personal identifying information in your comment, you should be aware that your entire comment (including your personal identifying information) may be made publicly available at any time. Although you can ask us in your comment to withhold your personal identifying information from public review, we cannot guarantee that we will be able to do so.

