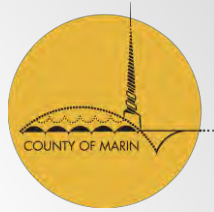


# Muir Woods Traffic and Transportation

**COUNTY OF MARIN – NATIONAL PARK SERVICE**

May 26, 2015

# Goals

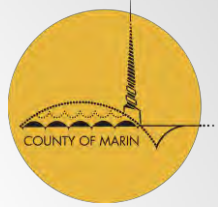


1. To protect, preserve and enhance the health of Redwood Creek watershed, including its salmonids.
2. To reduce traffic congestion at Muir Woods, on Muir Woods Road and in the local communities adjacent to and leading to Muir Woods.
3. To improve traffic and pedestrian safety and reduce environmental impacts that may arise from parking along Muir Woods Road.
4. To increase local transit and better manage buses, both commercial buses and public transit.

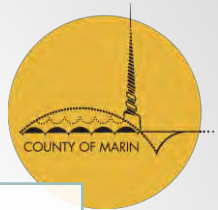


# Solutions

Part of a coordinated, sequenced effort



# Roadside Parking



## Draft MOU between Marin County & NPS

- Memorandum of Understanding drafted with input from public meetings, community representatives and stakeholders

## Creekside parking along the road eliminated

- Eliminated over 7 years. Road shoulder parking along Muir Woods Road south of the concrete bridge that is closest to the creek will be completely eliminated over a number of years through a phased ramp down

## Parking enforcement capability will be upgraded

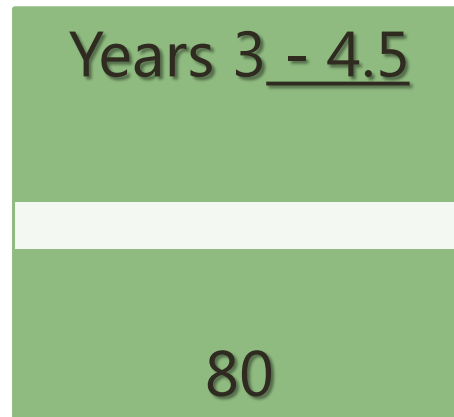
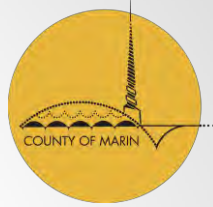
- National Park Service granted shared authority to issue tickets along road, additional dedicated enforcement officers
- Physical barriers and new signage for unsafe parking will be installed to reduce peak roadside parking from 400+ to 110 spaces, with further reductions over time

## Watershed health improved

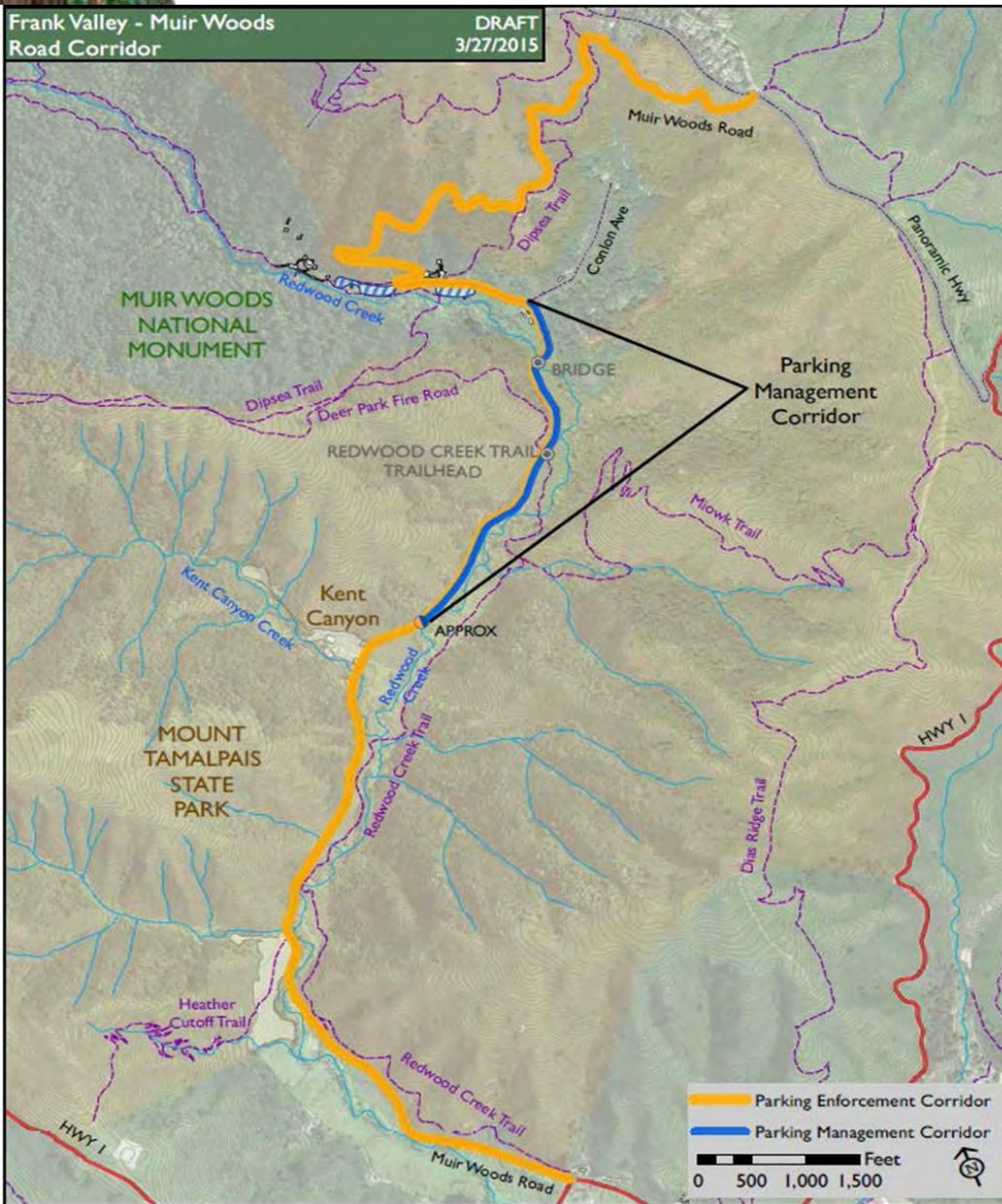
- Reduced shoulder parking and fewer vehicles near to creek
- Interim storm water best management practices will be implemented in roadside parking areas



# Roadside Parking Phasing



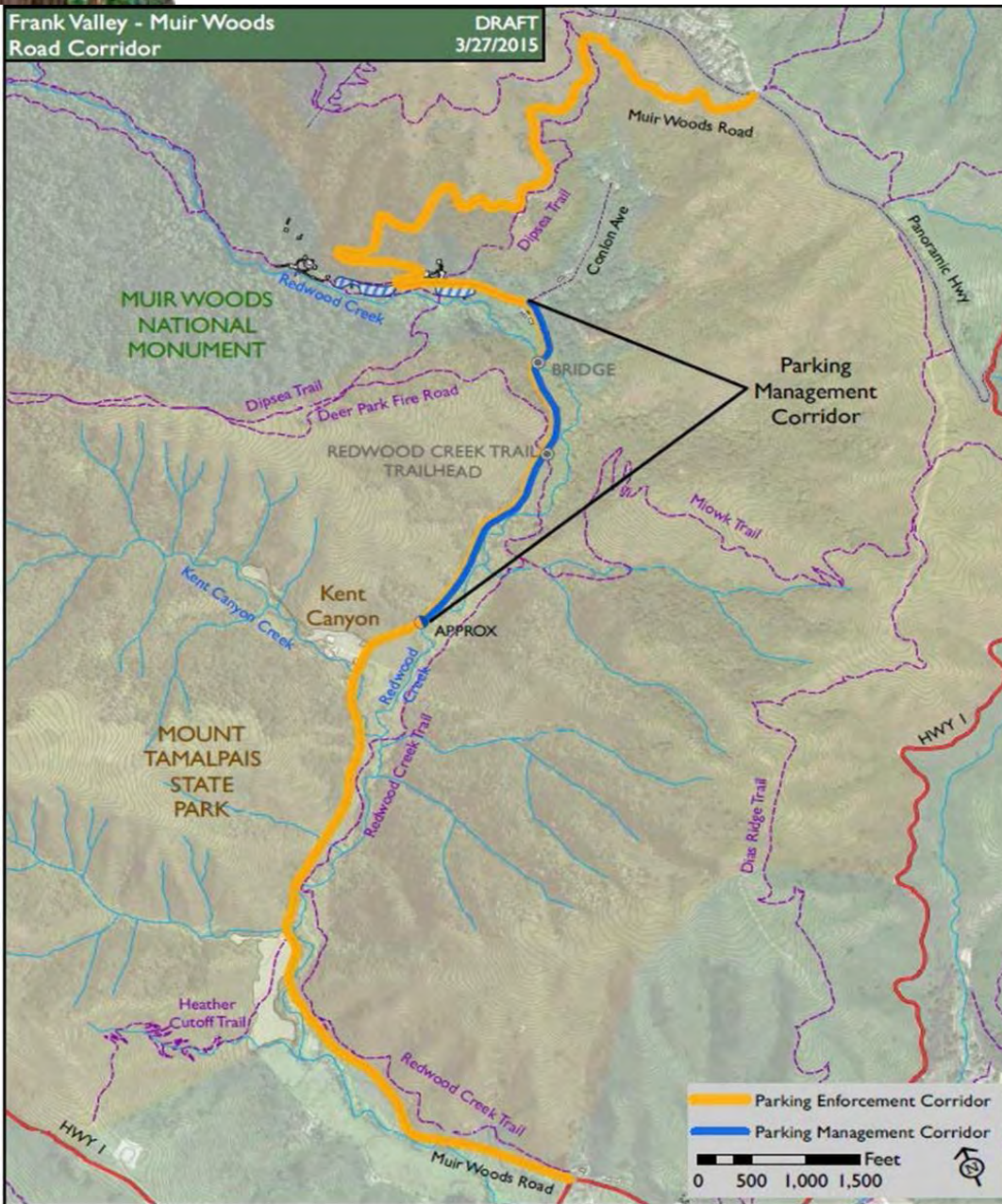
County's parking reductions will occur in three distinct phases, with specific actions and reductions in each that are sequenced to NPS actions to manage visitation.



## Years 1-2

- In the first months, new parking signs, authority granted to NPS to enforce
- Parking reservation system developed
- Physical barriers installed, additional officers
- Roadside parking reduced incrementally from 400+ down to 80 below the Bridge
- Interim storm water measures design and installation

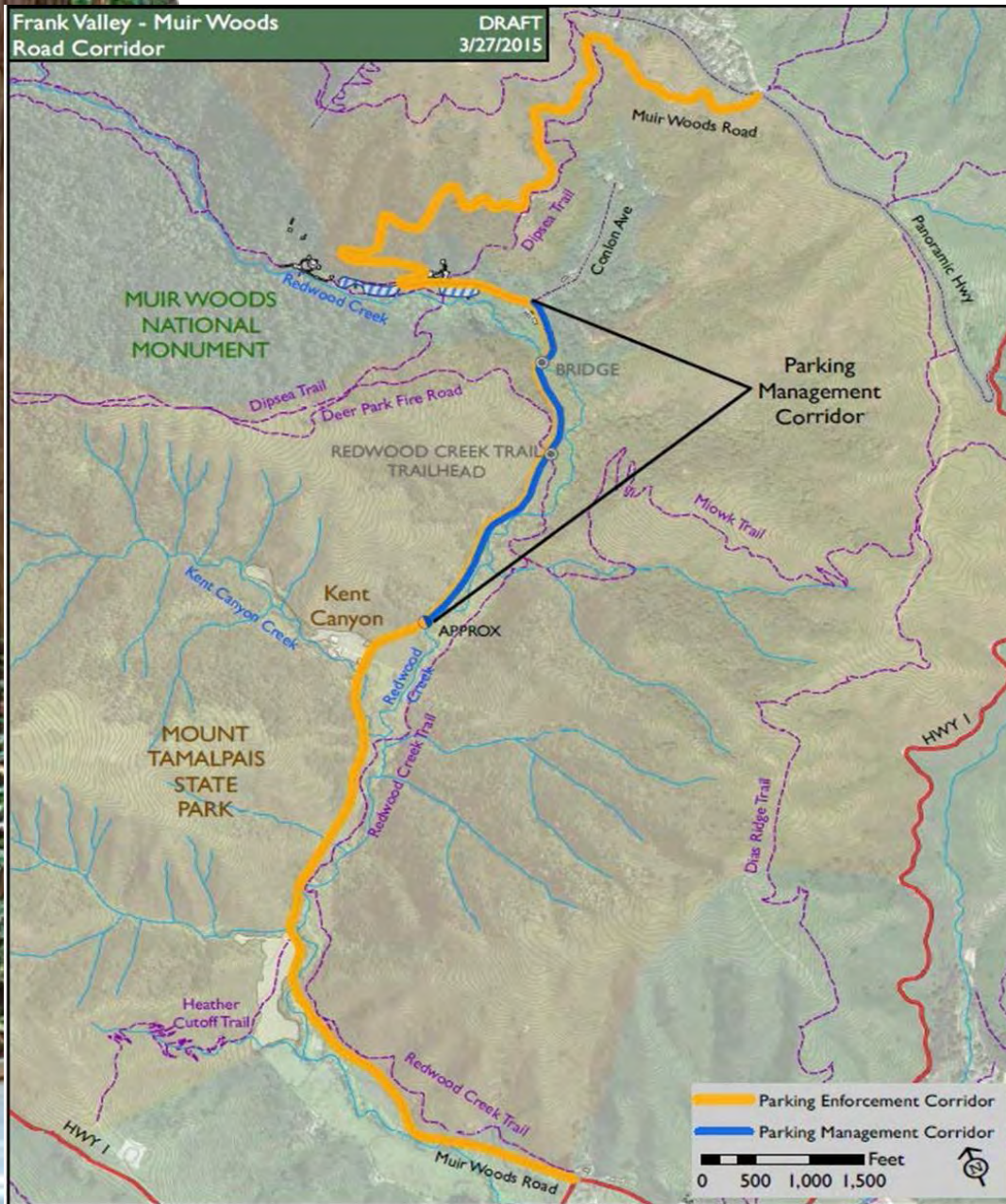




## Years 3 - 4.5

- Reservation System in place
- Roadside parking not to exceed 80 below the Bridge
- Parking permits strictly enforced





## Years 4.5 – 7

- Roadside parking not to exceed 40 below of Bridge
- No parking downstream of bridge following year 7.



# Visitation Management



## Experience improved and visitation levels limited

- To increase the quality of the visitor experience and in a way that reduces peak congestion and overall demand for parking
- Provides different experiences, accommodating busy summer weekends while ensuring quieter off season periods

## Transit Muir Woods will be increased

- Ongoing commitment to proven Muir Woods shuttle

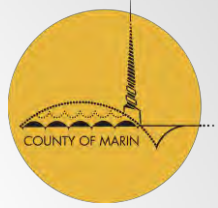
## Buses will be managed and controlled

- Bus sizes will be limited to 35 feet
- Arrival will be via reservation only

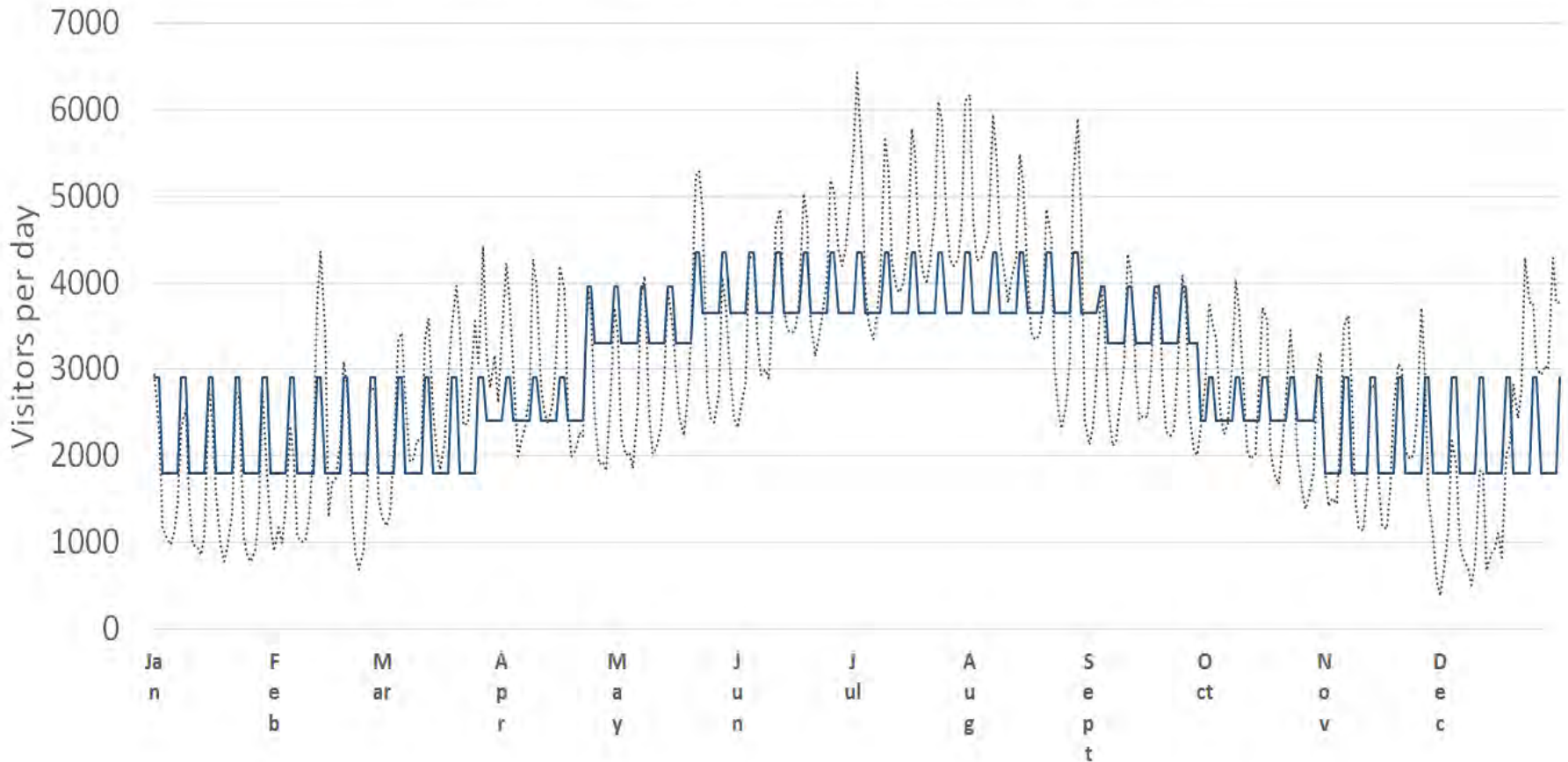
## Infrastructure and watershed health improved

- Pursuit of upgraded and more effective parking facilities
- Continued collaboration on habitat improvement projects along Redwood Creek

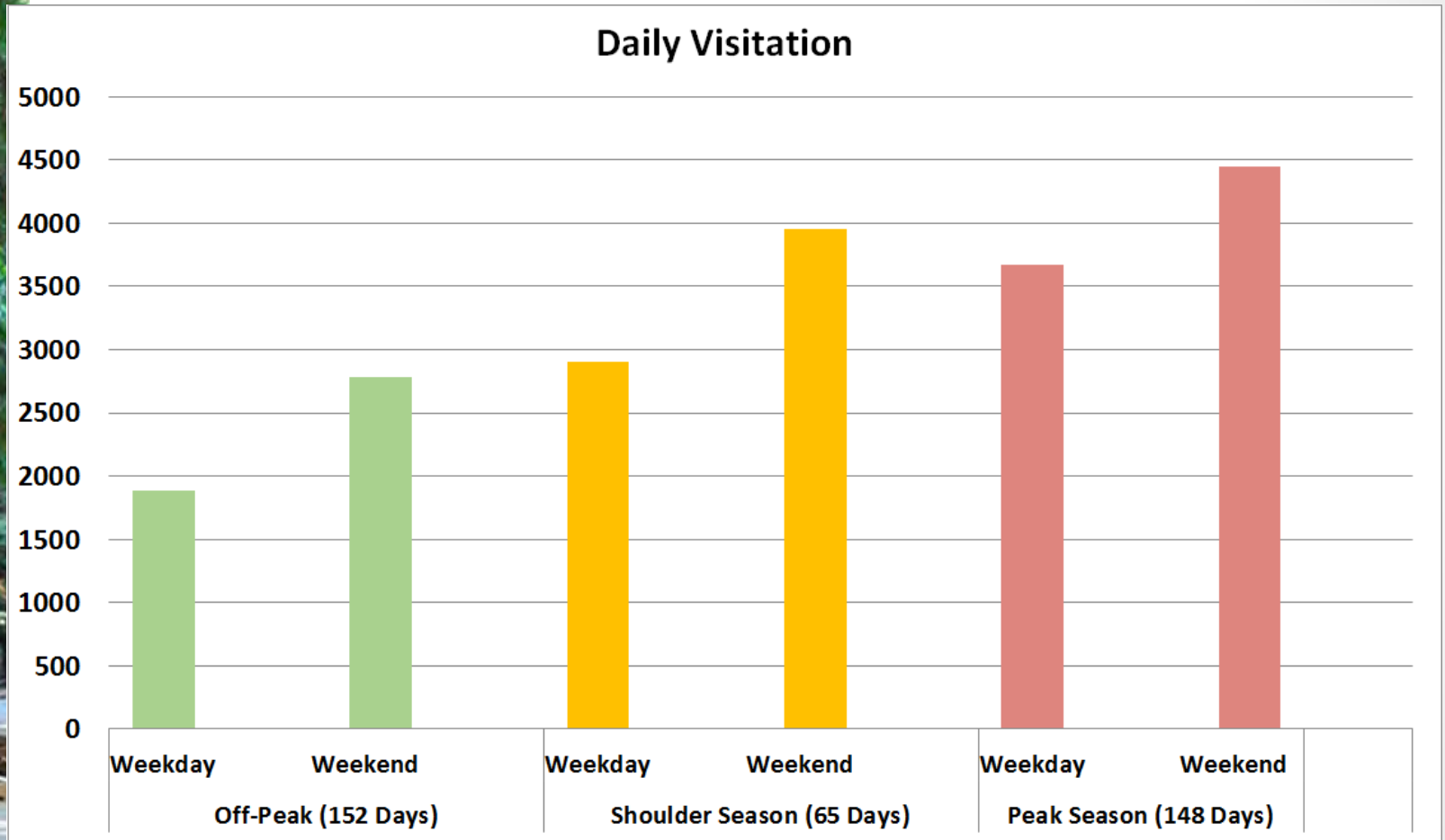
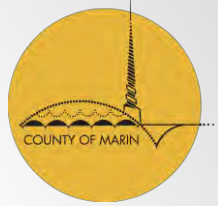
# Visitation Levels



..... 2017 Visitation without Reservation System  
— 2017 Max. Visitation with Reservation System



# Visitation Experiences



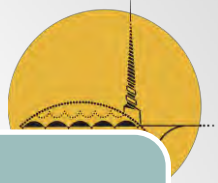
~40%

~20%

~40%



# Visitation Results



## The Traffic


- 20-30% reduction in MW-bound daily trips during peak season
- 40-50% reduction in MW-bound peak-hour trips during peak season

## The Experience

- Not an overwhelming level of people inside the Woods and outside
- Improved safety, reduced frustration and conflict
- More often quieter and contemplative visits – more inspiration!

## The Environment

- Reduced air pollutants, reduced noise
- Reduced roadside parking near Redwood Creek



Question and  
Answers