



FRANKLIN PARK



DOWNTOWNDC

OLIN

ZGF
EMMEY GUNDA FRASCA ARCHITECTS LLP

ACTIVATE THE PARK

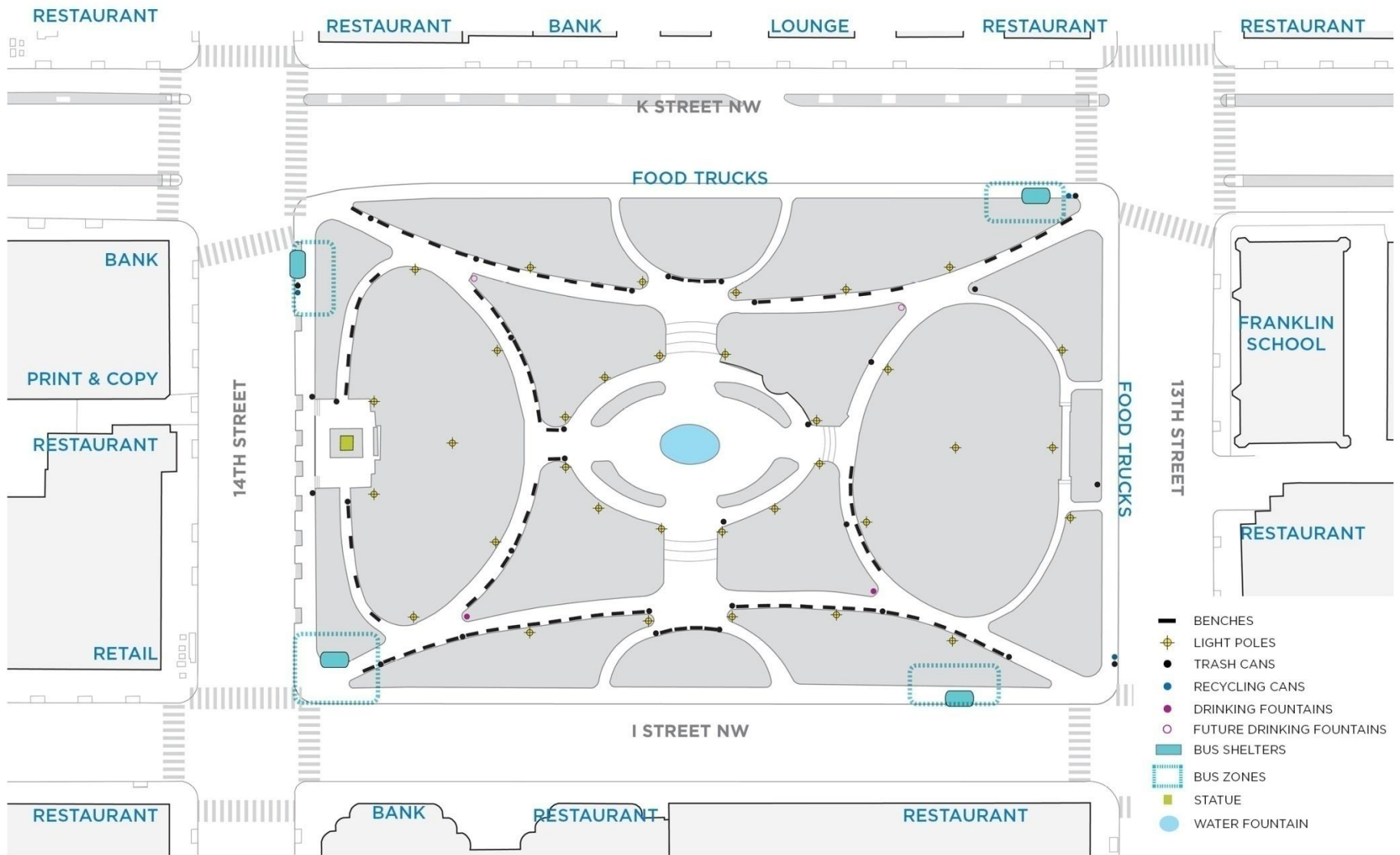
ENGAGE + CONNECT THE COMMUNITY

REVEAL HISTORY

INFUSE SUSTAINABILITY

MANAGE AND FINANCE FOR SUCCESS

PROJECT GOALS



OLIN + ZGF

PROPOSED PROGRAM



seasonal
plantings



historic
interpretation



cafe



open lawn



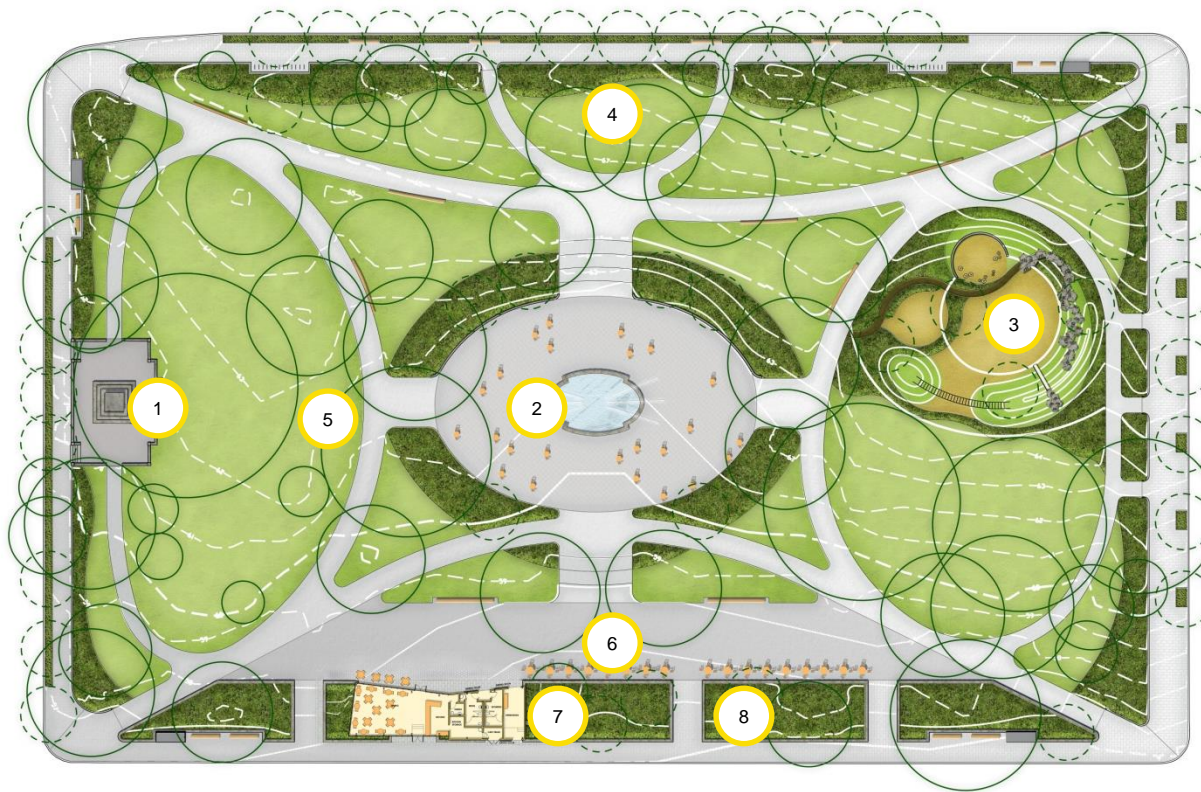
children's
play area



interactive
water feature

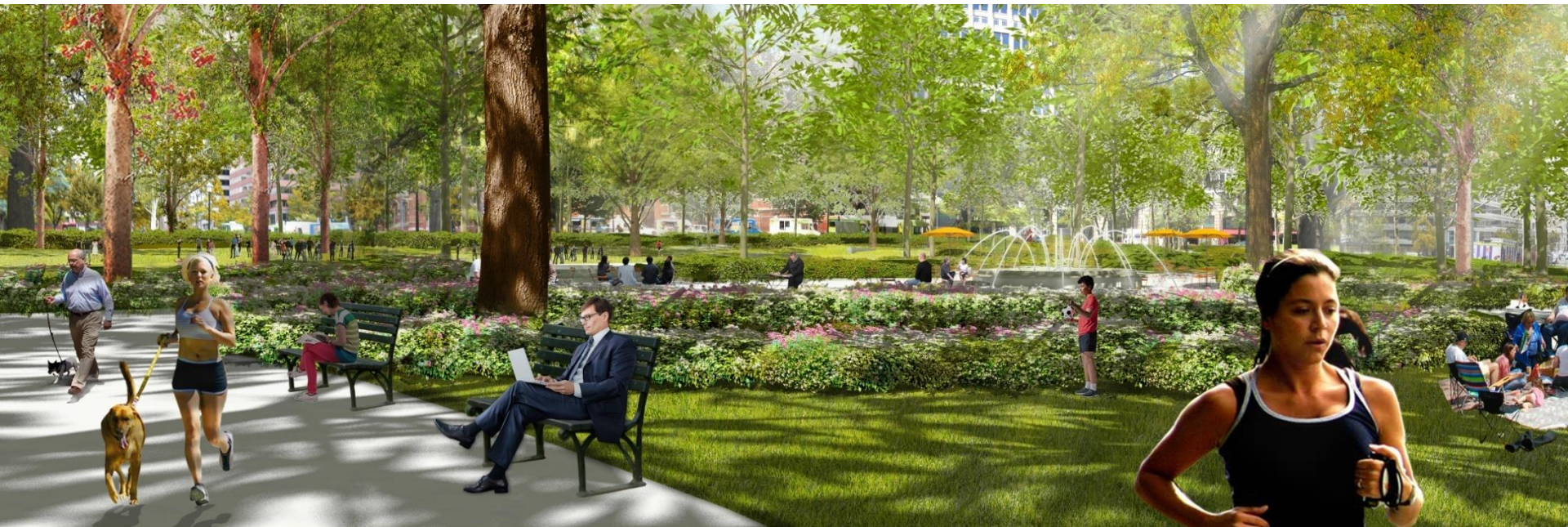


events



- 1 Commodore Barry Statue
- 2 Central Fountain and Plaza
- 3 Children's Garden
- 4 Seasonal Planting
- 5 Lawn
- 6 Terrace
- 7 Café/ Bathrooms and Operations
- 8 Rain Garden

OLIN + ZGF



REFRESH



PLAY



RELAX



GATHER

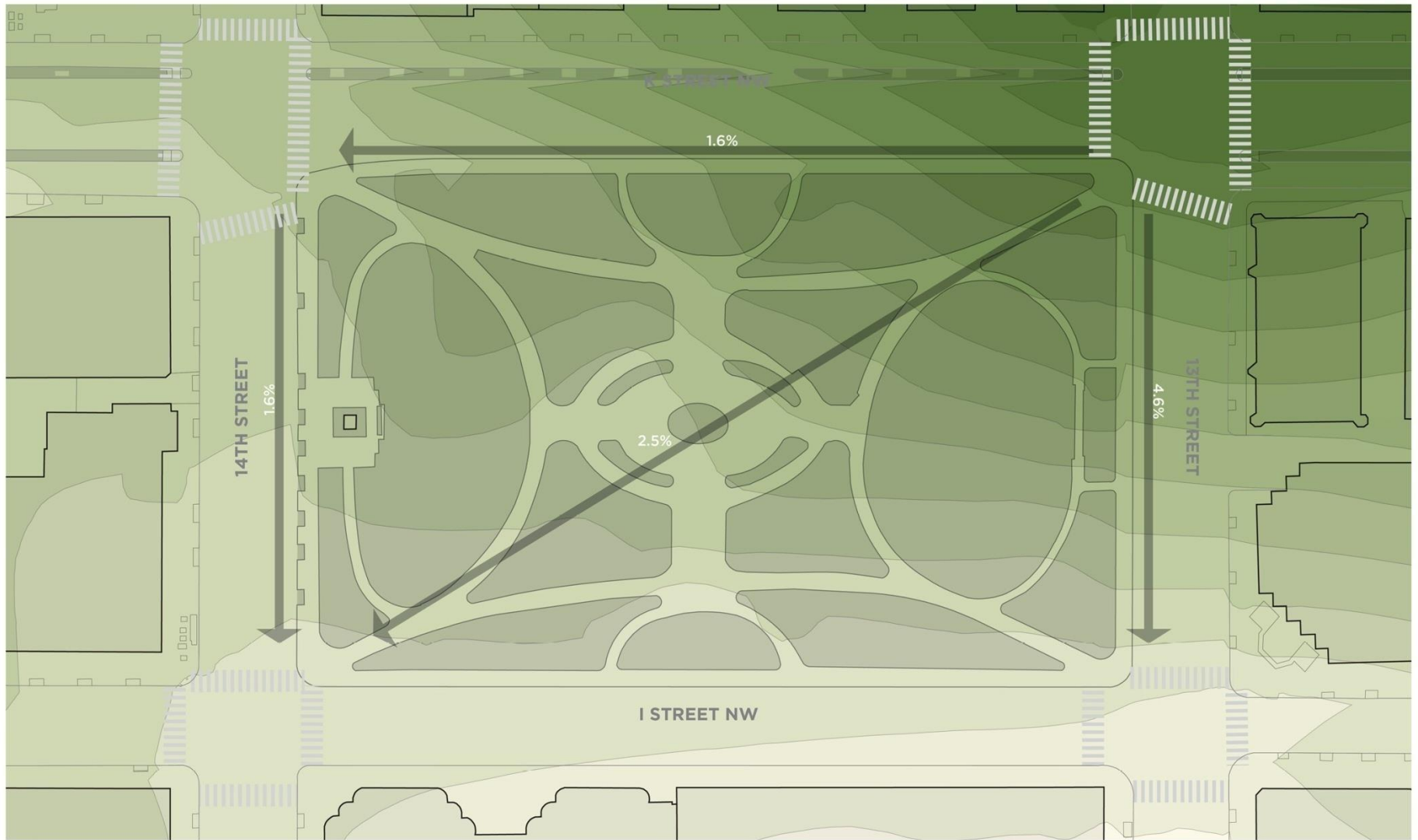
PAVING/PLANTING

CHILDREN'S GARDEN

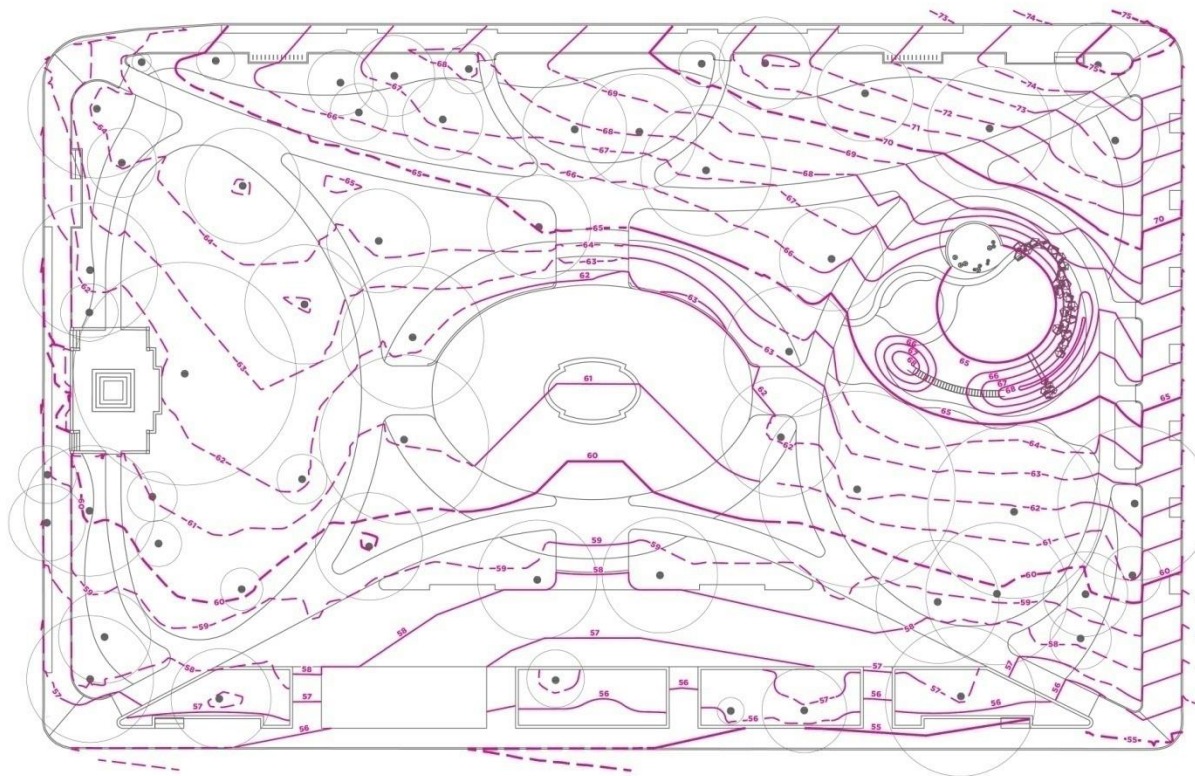
FOUNTAIN/CENTRAL PLAZA

CAFÉ/TERRACE

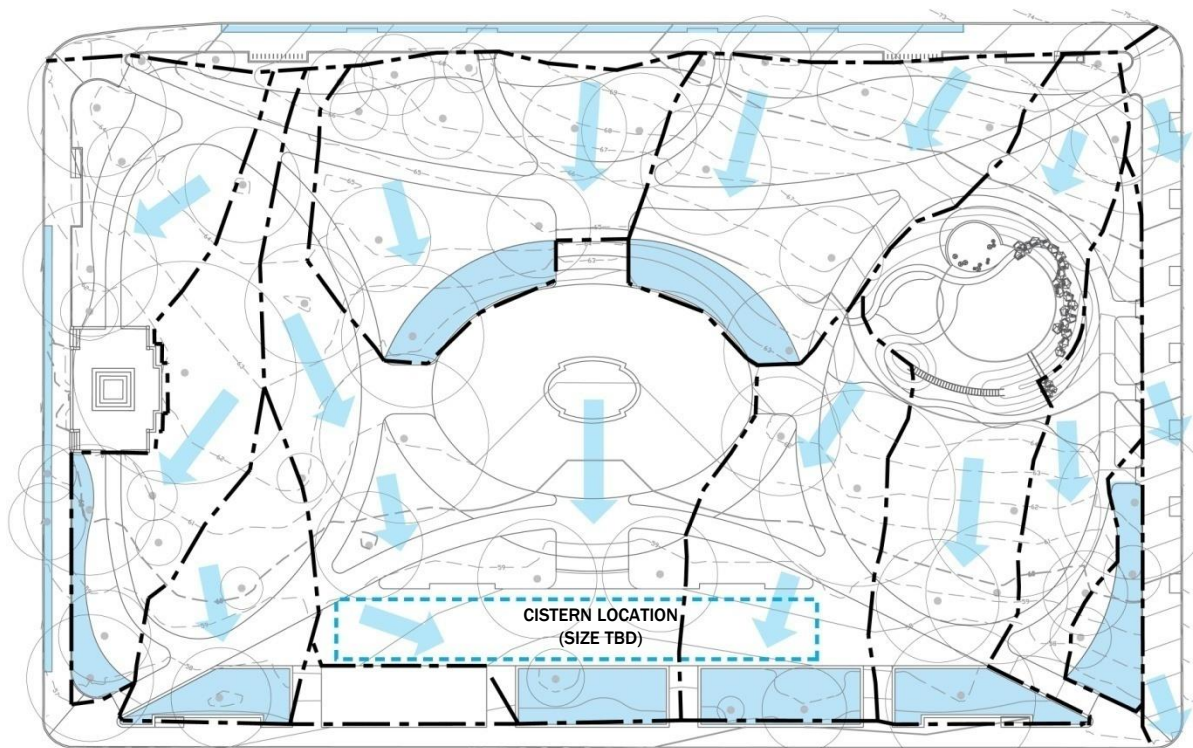
MAINTENANCE/OPERATIONS



OLIN + ZGF



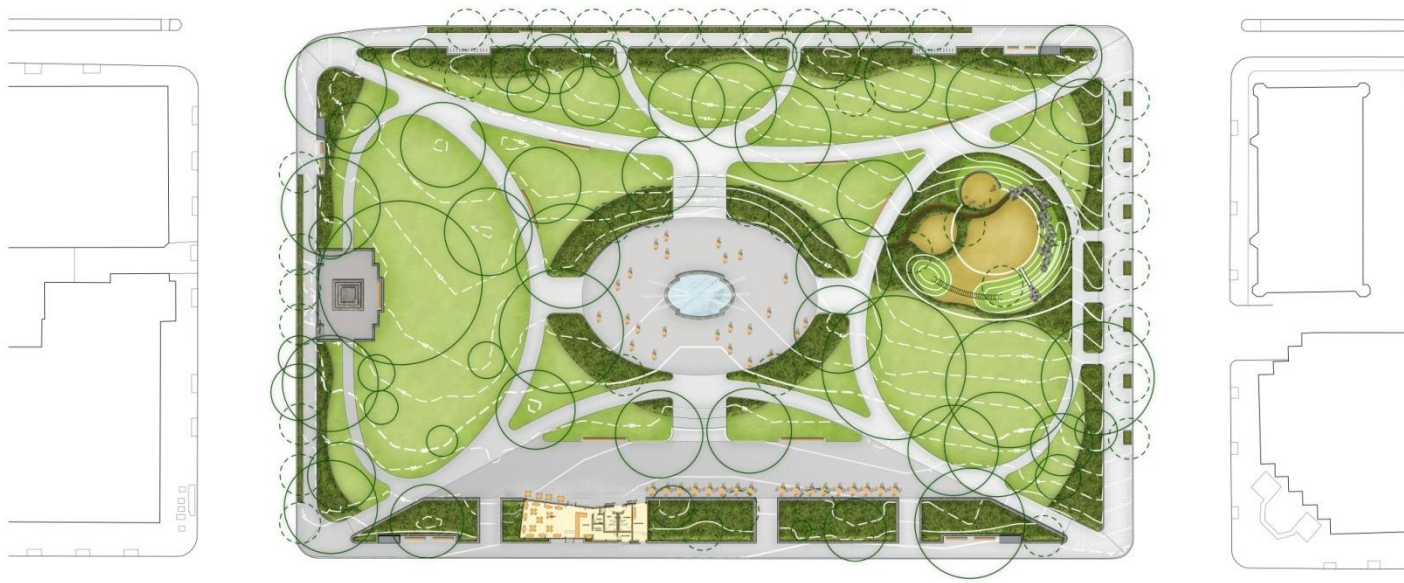
OLIN + ZGF



Note: DDOE requirements are achieved with design capacity of proposed rain gardens. Cistern is intended for stormwater capture, storage, and reuse for irrigation and café/restroom gray water.

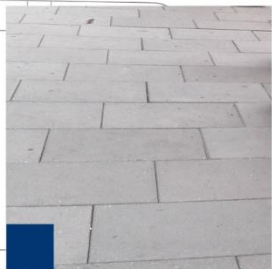
OLIN + ZGF

PAVING

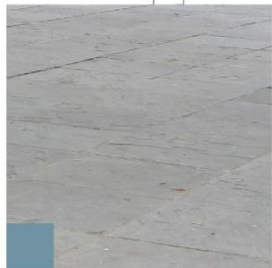


Design Goals:

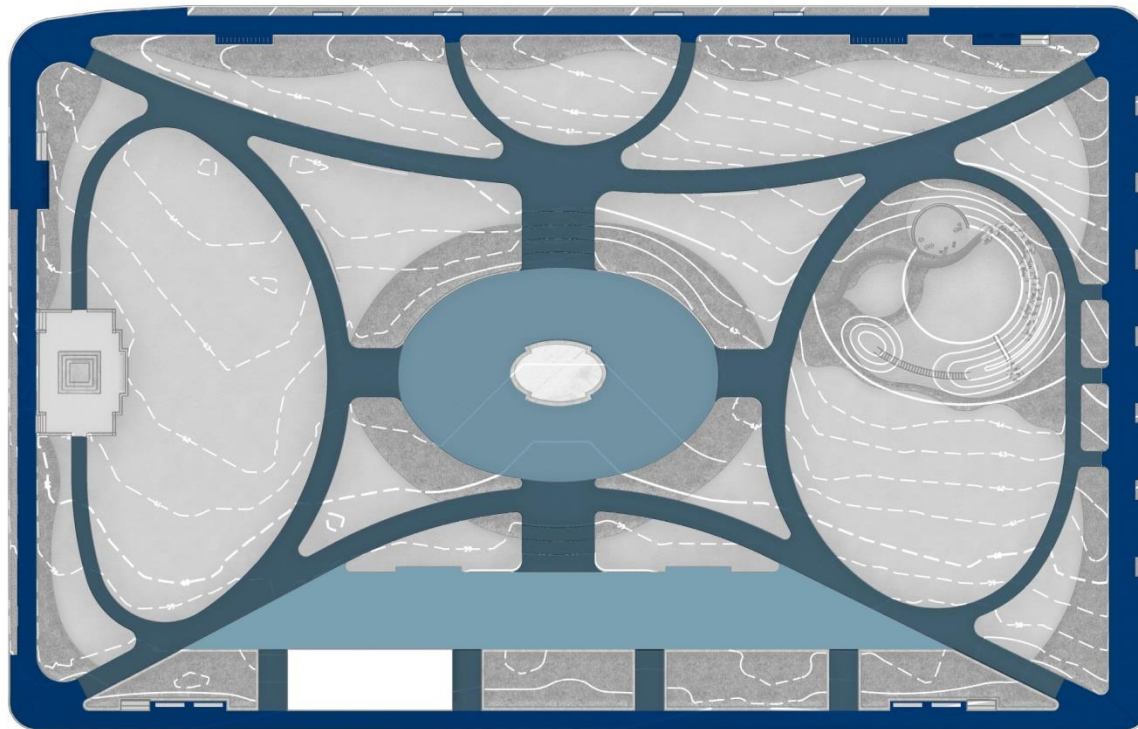
- Coordinate with DDOT and NPS standard materials
- Reuse bluestone
- Specify durable materials
- Cool palette



CONCRETE PAVER - DC STANDARD



BLUE STONE



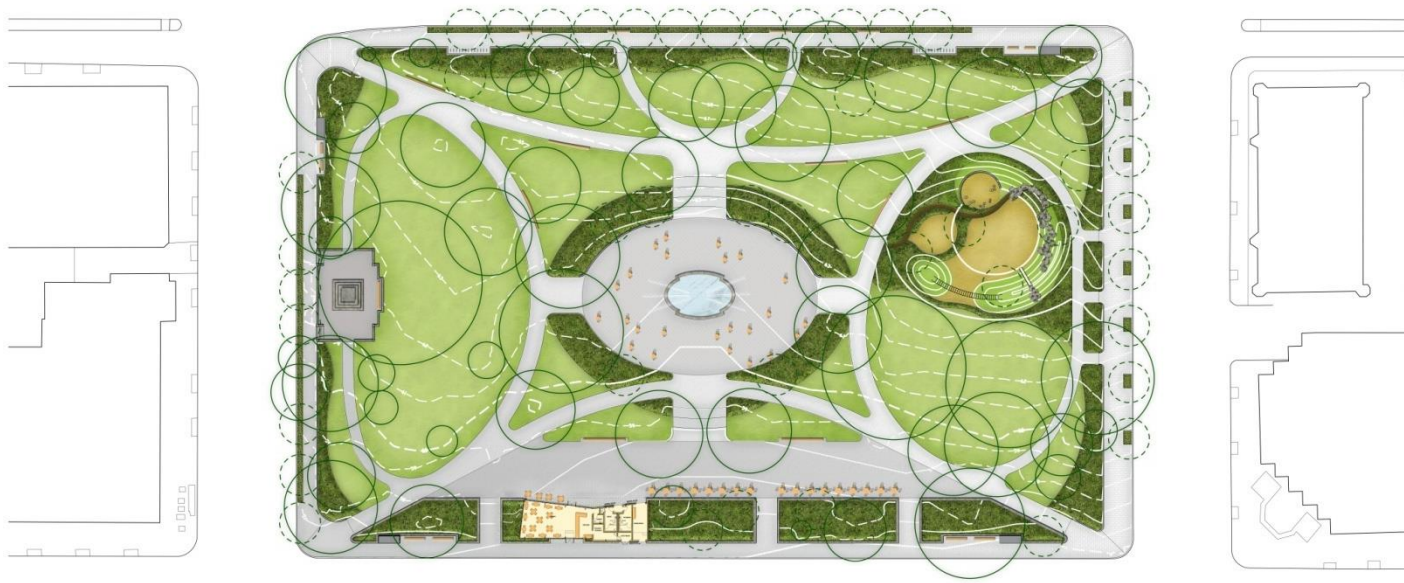
CONCRETE - EXPOSED AGGREGATE



HISTORICAL INTERPRETATION | ENGRAVING

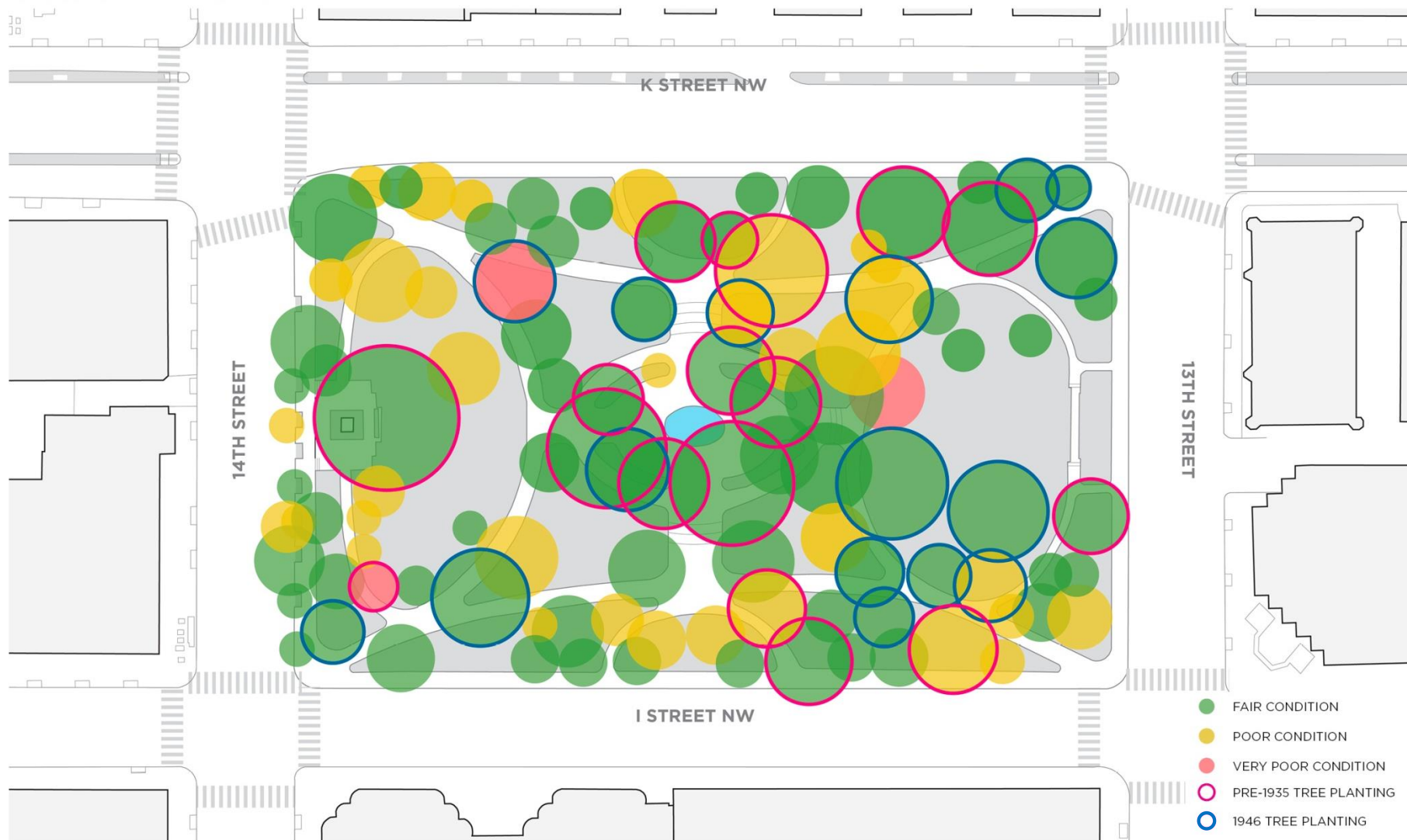
OLIN + ZGF

PLANTING



Design Goals:

- Incorporate planting with seasonal interest
- Use native/naturalized lower-maintenance species where possible
- Provide performative plantings for rain gardens
- Reference previous palettes – lush quality, color/texture, space making
- Provide a variety of sun/shade conditions

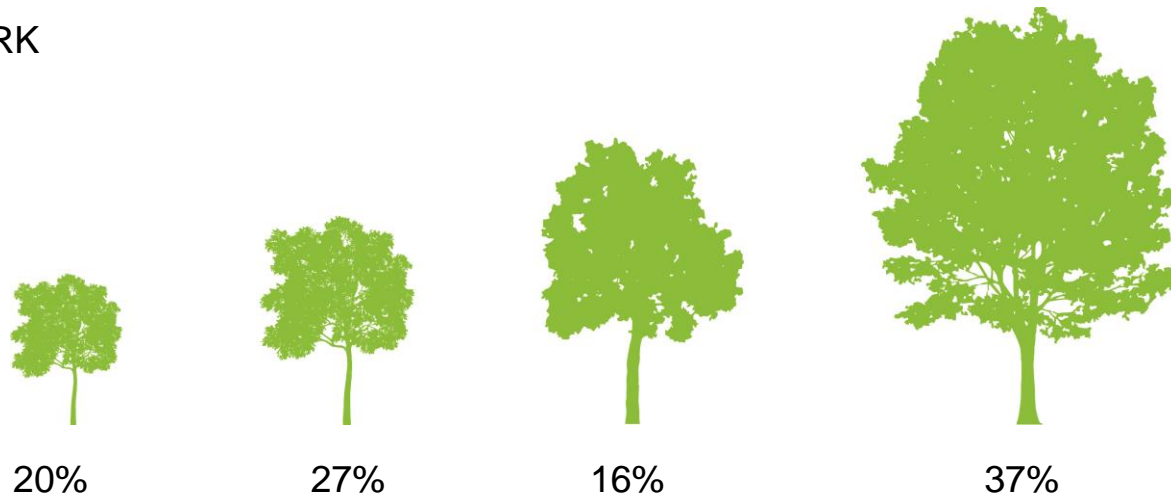


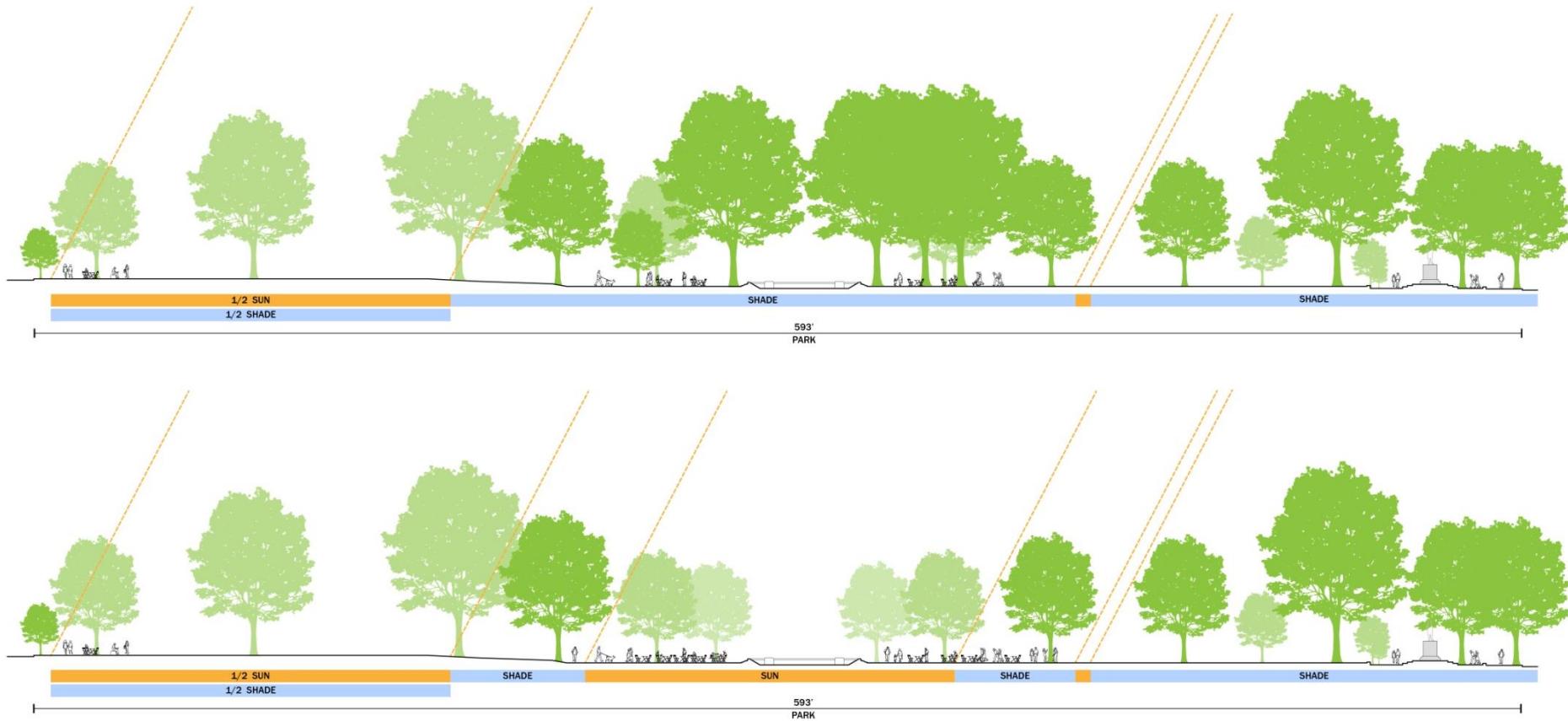
OLIN + ZGF

IDEAL AGE DISTRIBUTION

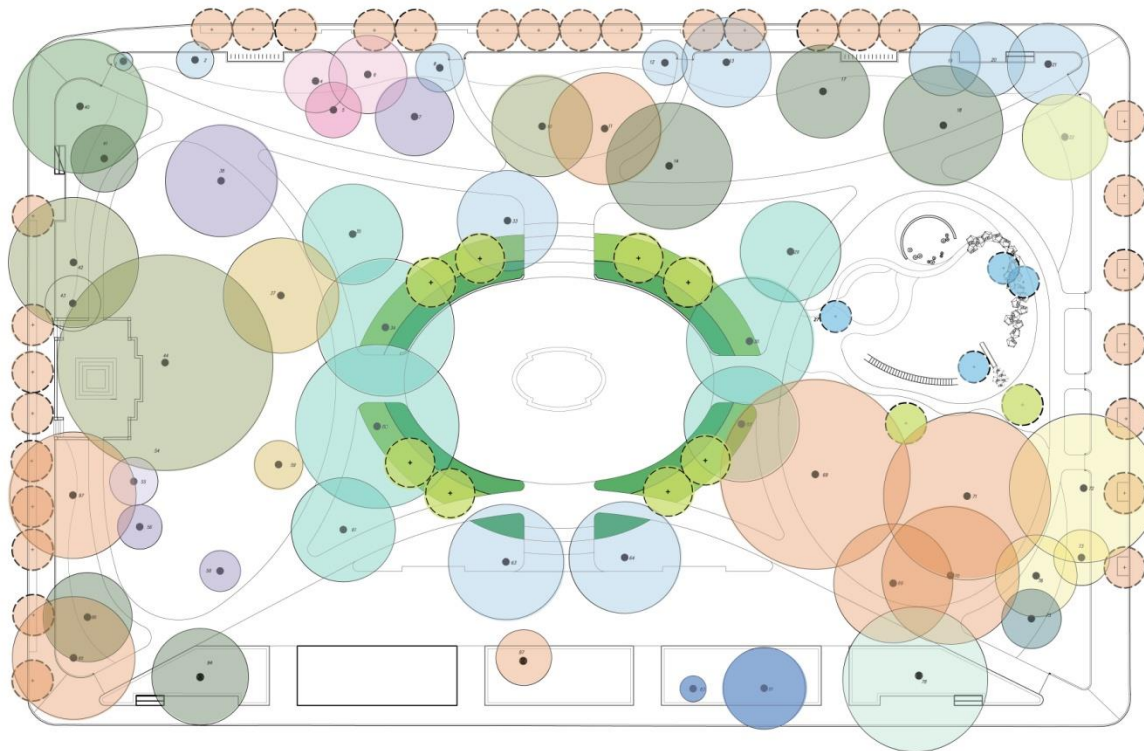


FRANKLIN PARK





NOTE: Demonstrates approximate afternoon sun angle at summer solstice



NATIVE/NATURALIZED SEASONAL INTEREST WATER RECEIVING



WILLOW OAK



AUTUMN BLAZE MAPLE



CAROLINA SILVERBELL

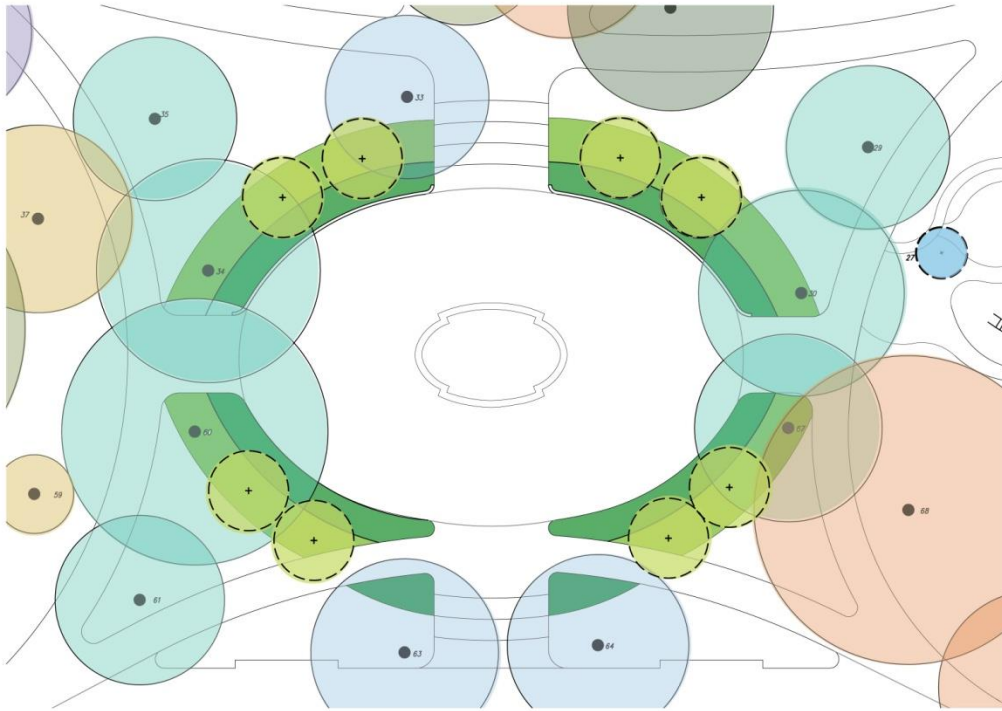
	QUERCUS PHELLOS, WILLOW OAK		MAGNOLIA ACUMINATA, CUCUMBER MAGNOLIA
	STYPHNOLOBIUM JAPONICUM, PAGODA TREE		MAGNOLIA SOULANGIANA, SAUCER MAGNOLIA
	LIRIODENDRON, TULIP TREE		QUERCUS RUBRA, RED MAPLE
	ZELKOVA SERRATA, ZELKOVA		PLATANUS ACERIFOLIA, LONDON PLANE
	QUERCUS ALBA, WHITE OAK		ULMUS AMERICANA, AMERICAN ELM
	QUERCUS PALUSTIS, PIN OAK		ULMUS RUBRA SLIPPERY ELM
	TILIA CORDATA, LINDEN		CEDRUS ATLANTICA, ATLAS CEDAR
	MALUS SPP, CRABAPPLE		CEDRUS DEODARA, DEODAR CEDAR
	EXISTING TREE		PROPOSED TREE

	ACER FREMONTII 'AUTUMN BLAZE', BLAZE RED MAPLE
	HALESIA CAROLINA CAROLINA SILVERBELL
	QUERCUS PHELLOS, WILLOW OAK
	HERITAGE PLANT

New plantings have been chosen with a variety of criteria in mind including favoring native species, being low-maintenance, rugged, seasonally interesting and appropriate to the micro-climate of their specific location in plan.

Additionally, favor was given to the selection of species that reflect and pay homage to trees and plants found on archival planting plans. Some "heritage plants" are now known to be invasive and were not considered. Listed below are some of the plants that are known to have been planted in the past.

Quercus phellos	Gleditsia triacanthos	Sophora japonica	Azalea spp.	Ligustrum (privet)
Carpinus betulus	Tilia americana	Fagus sylvatica	Osmanthus spp.	Narcissus spp
Quercus spp.	Magnolia stellata	Aesculus hippocastanum	Abelia grandiflora	Vinca minor
Halesia carolina	Ulmus campestris	Crataegus crus-galli	Contoneaster	
Malus spp.	Cornus florida	Sophora japonica	Euonymus coloratus	



SOPHORA JAPONICA - EXISTING



SOPHORA JAPONICA - FALL



PACHYSANDRA PROCUMBENS



ACER FREEMANII AUTUMN BLAZE- FALL



PHLOX STOLONIFERA



DAFFODIL 'ICE FOLLIES'



HELLEBORUS SPP.



CORNUS 'KELSYI', 24" - 30"



CORNUS KELSYI WITH CAREX



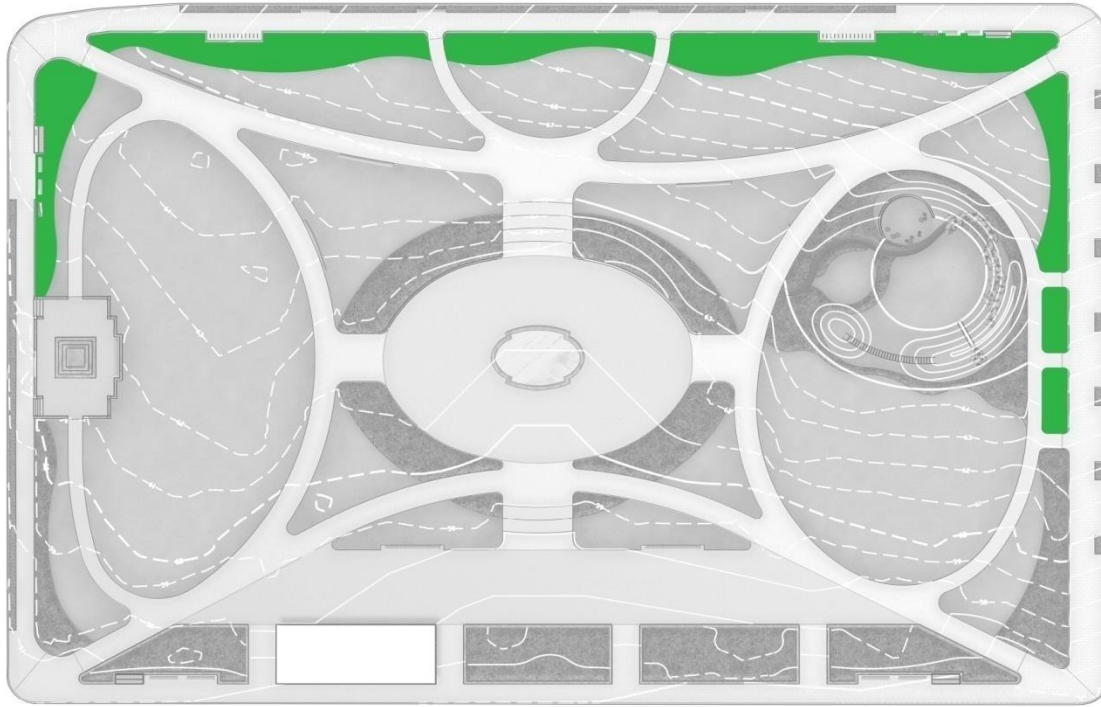
CAREX 'EVERGOLD'



TIARELLA SPP.



HOSTA SPP.



HELLEBORUS SPP.



EPIMEDIUM 'FRONLEITEN'



SALVIA SPP.



GERANIUM MACRORRHYZUM



DAFFODIL 'ICE FOLLIES'



HOSTA SPP.



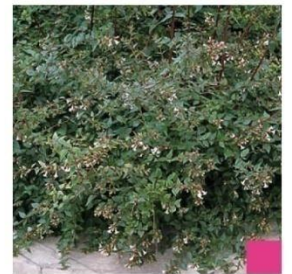
VINCA MINOR



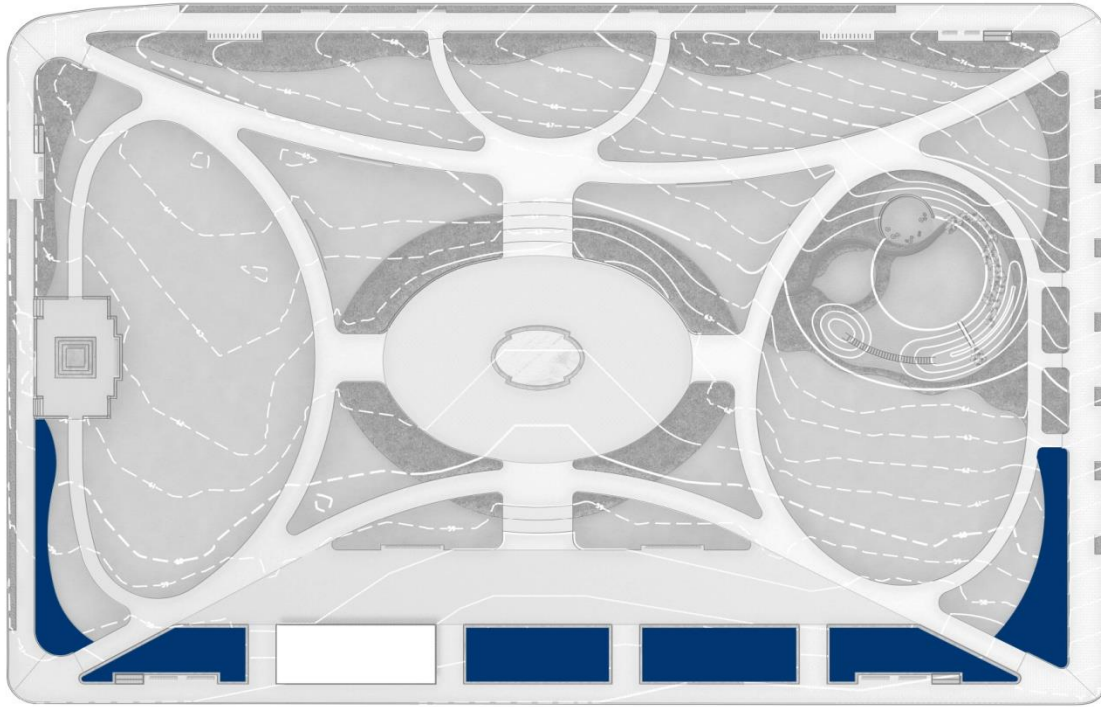
PACHYSANDRA PROCUMBENS



CEANOTHUS AMERICANUS



ABELIA GRANDIFLORA



FOTHERGILLA GARDENII



HYDRANGEA QUERCIFOLIA



TIARELLA SPP.



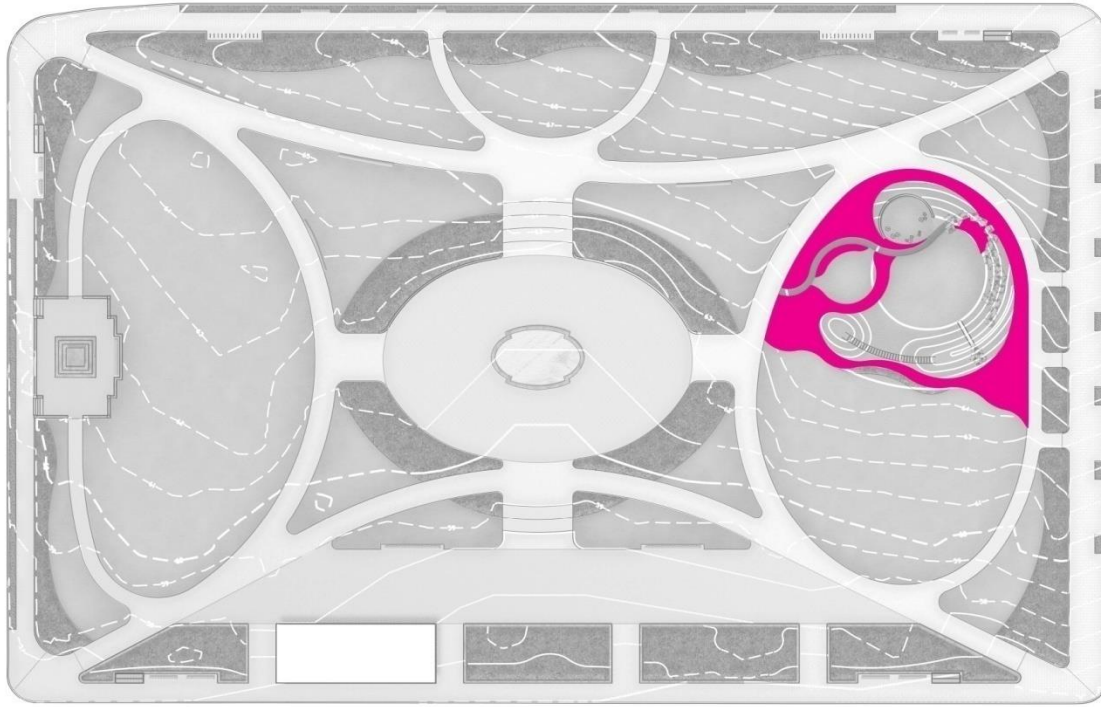
PHLOX STOLONIFERA



RHODODENDRON VICOSUM



FOTHERGILLA GARDENII



HALESIA CAROLINA



OSMANTHUS HETEROPHYLLUS 'ROTUNDIFOLIUS'



AZALEA VASEYI - early bloom



NEPETA 'SIX HILLS GIANT'



COTONEASTER DAMMERI



HOSTA SPP.



HAKONECHLOA MACRA



STIPA TENUISSIMA



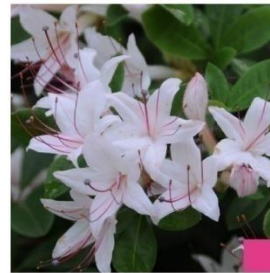
HYPERICUM CALYCNUM



OSTRICH FERN



RHODODENDRON ALABAMENSE - mid season bloom



RHODODENDRON ARORESCENS - late blooming



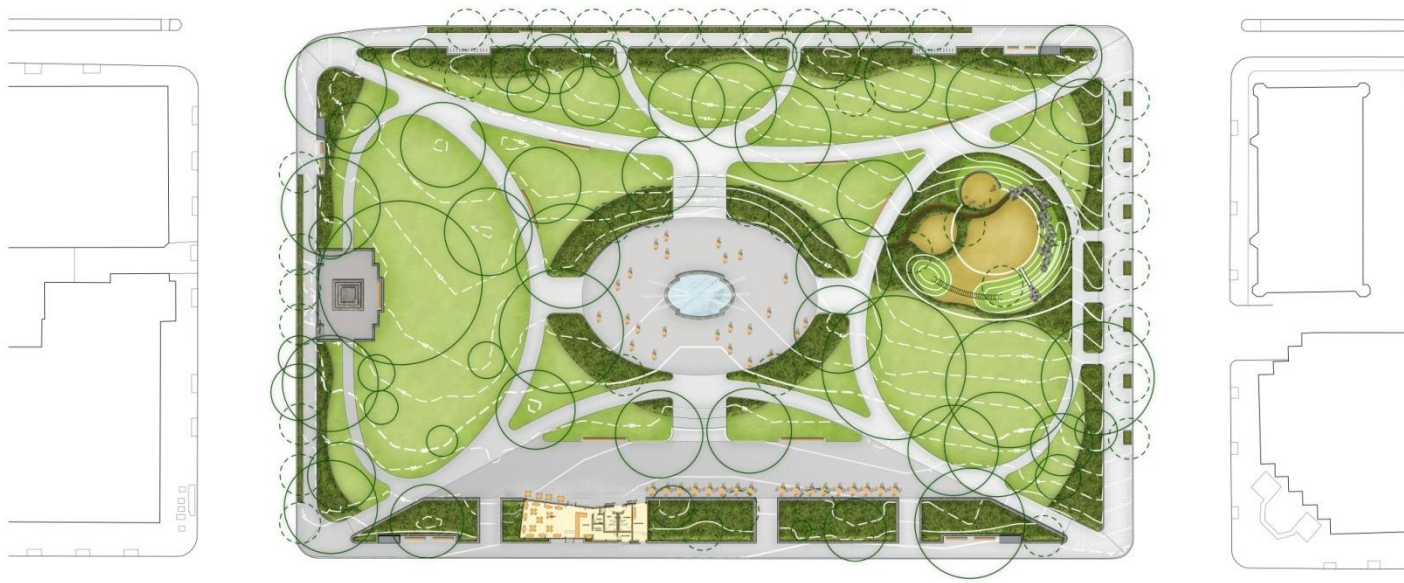
ALLIUM & BLUE OAT GRASS



LIRIOPE MUSCARI

CHILDREN'S GARDEN



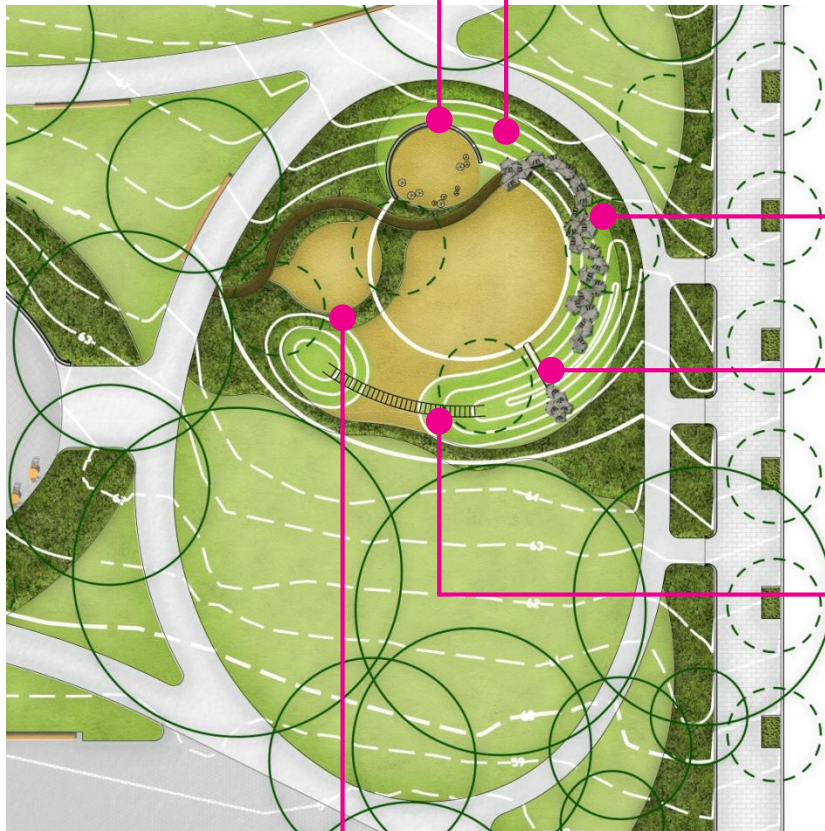


Design Goals:

- Children's garden where children from local school, childcare centers and local families can play
- Create space for interpretive and spontaneous play
- Cultivate imagination and promote environmental education
- Create sense of enclosure through planting and grading
- Reference larger environmental context / Rock Creek Park



CHILDREN'S GARDEN – POTOMAC WATERSHED



BOULDERS



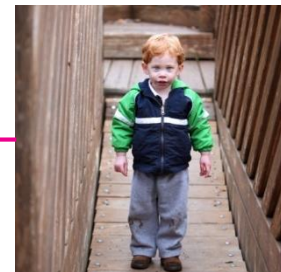
LANDFORM



SLIDE



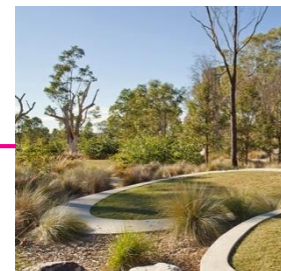
ENCLOSURE - WALL



BRIDGE



CLIMBING BARS



ENCLOSURE - PLANTING



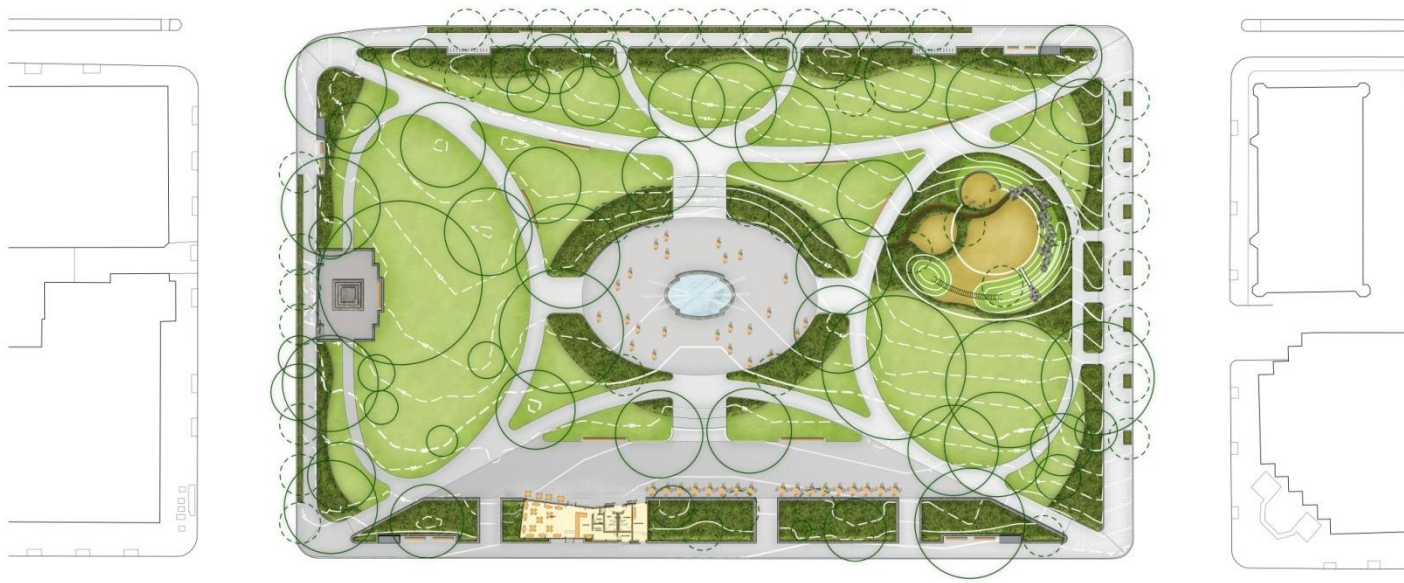
ENGINEERED WOOD FIBER



OLIN + ZGF

CENTRAL PLAZA & FOUNTAIN





Design Goals:

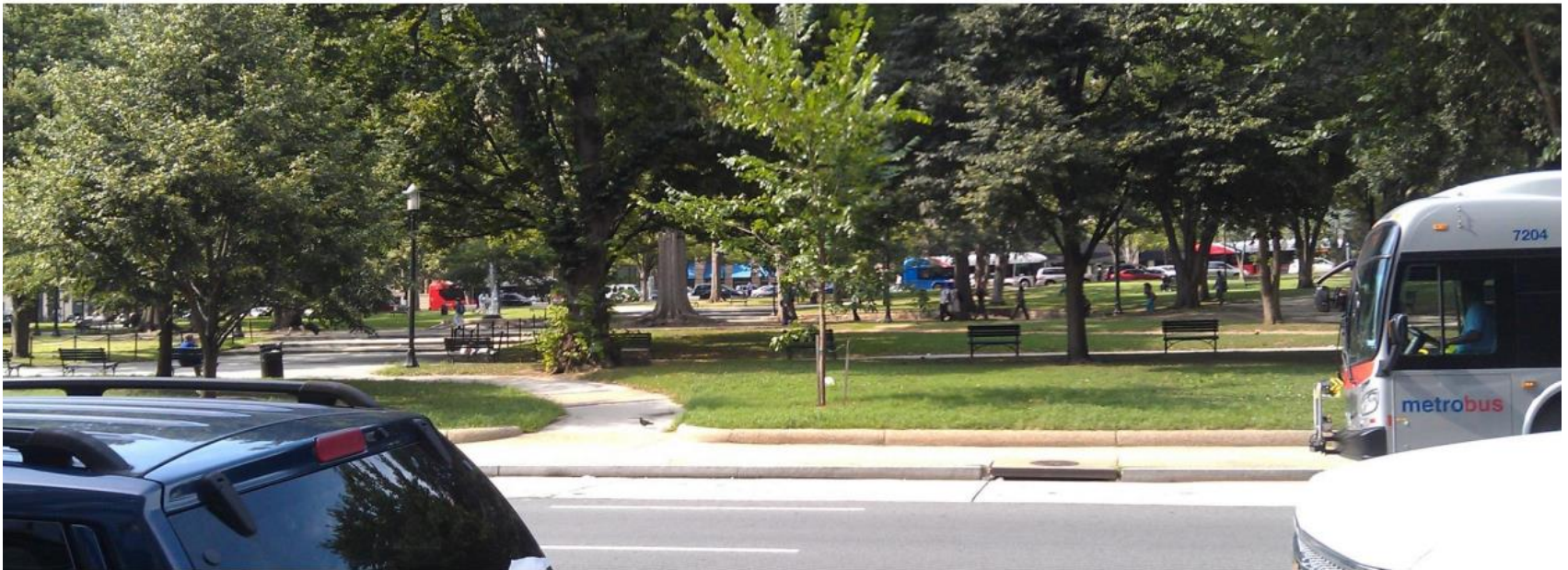
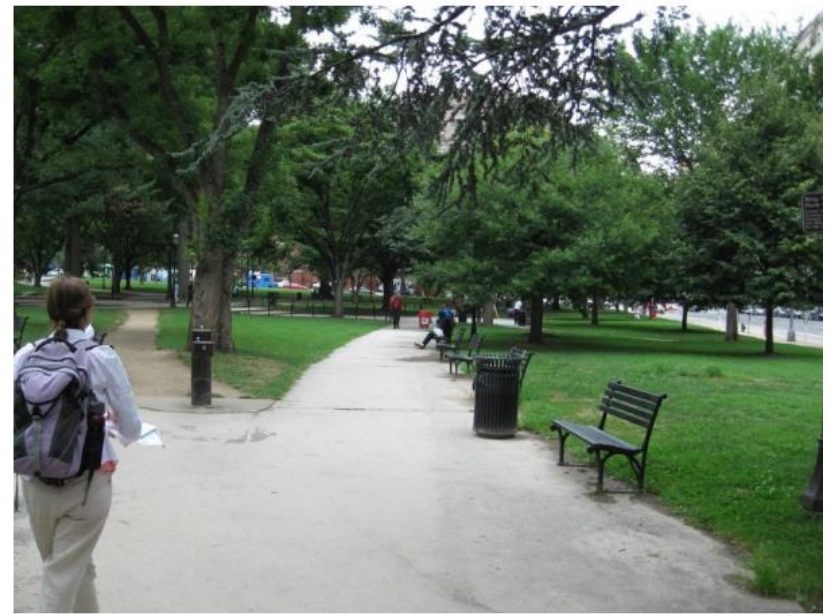
- Reuse historic coping/maintain form
- Make edge more engaging
- Bolder water display to draw in visitors







CAFÉ





Design Goals:

- Scaled appropriately, maximize transparency, complement park activity, support 18 hour use
- Focus toward the **Park** with acknowledgment of the Street
- The Building is **5 sided** – 4 Walls and the Roof

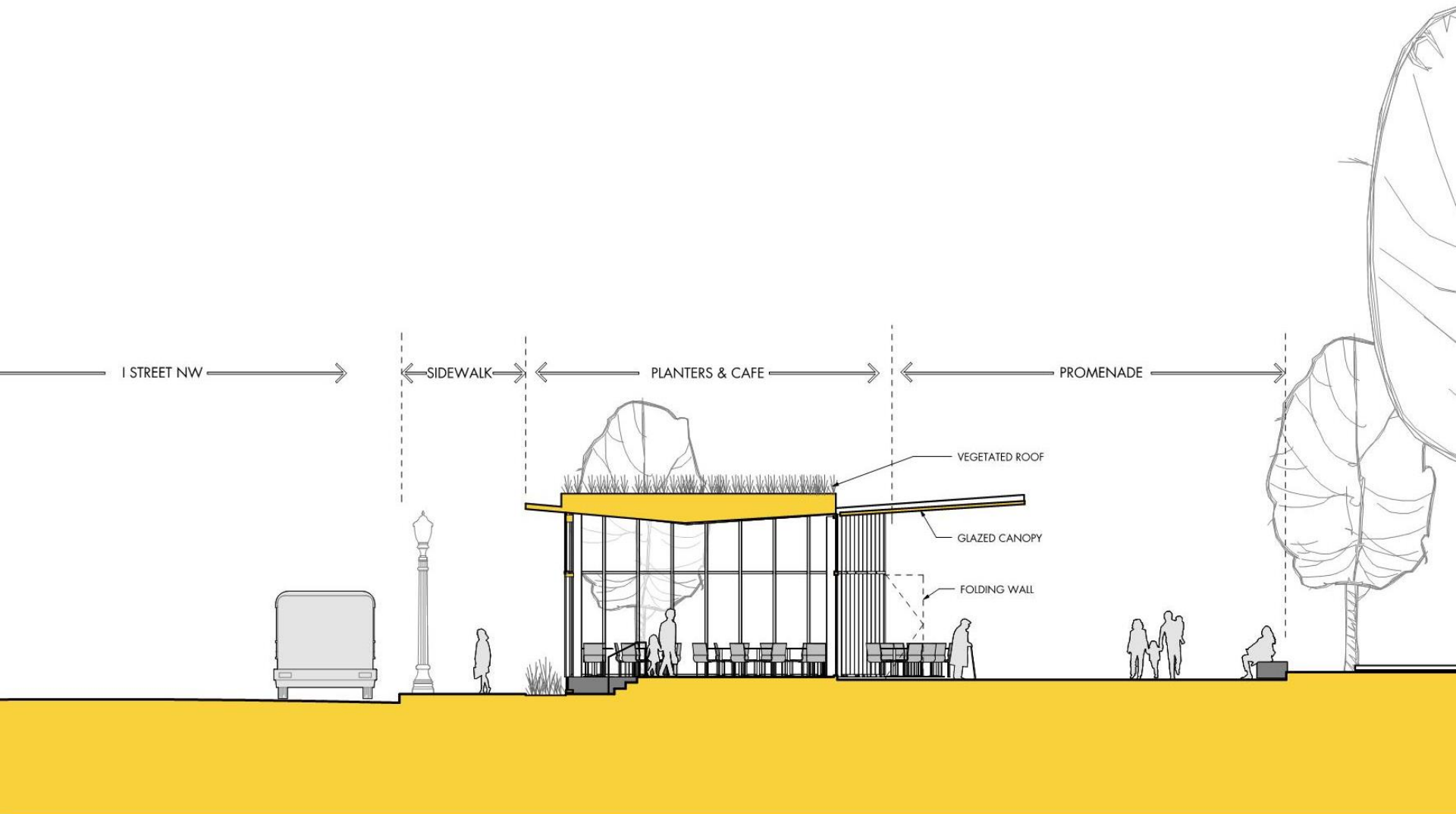
Contemporary Use of Materials – Stone, Wood, Glass

Sustainability Focus:

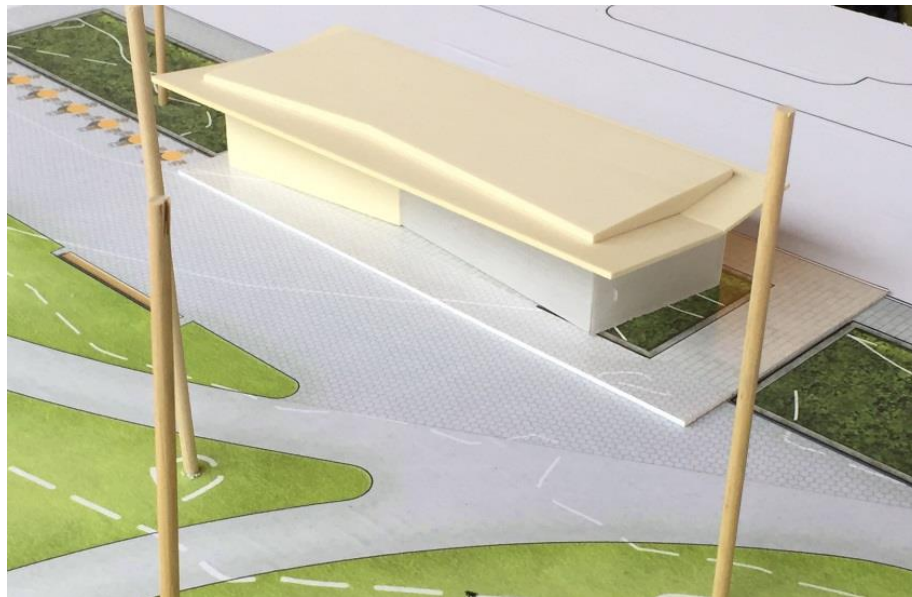
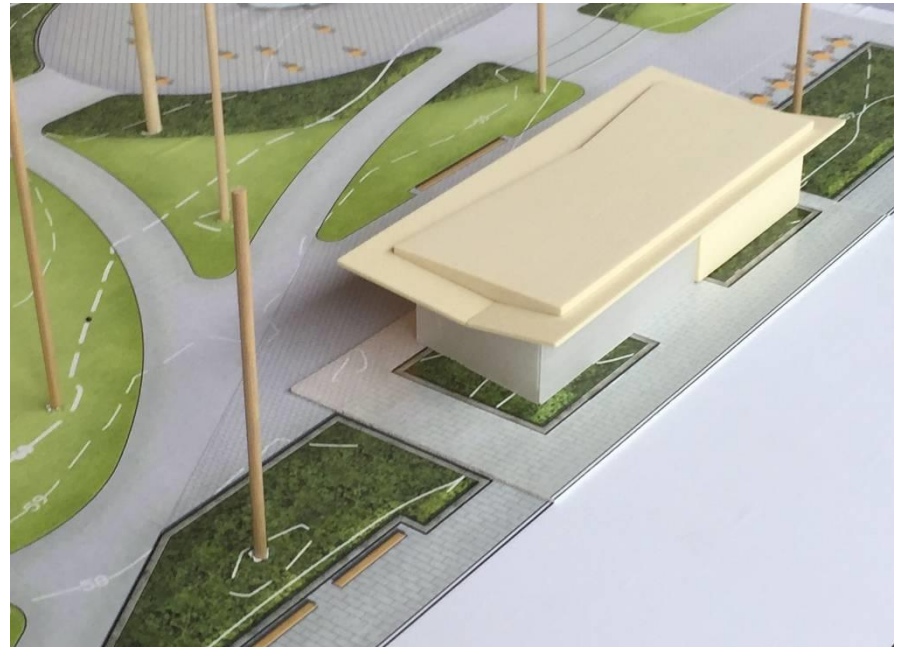
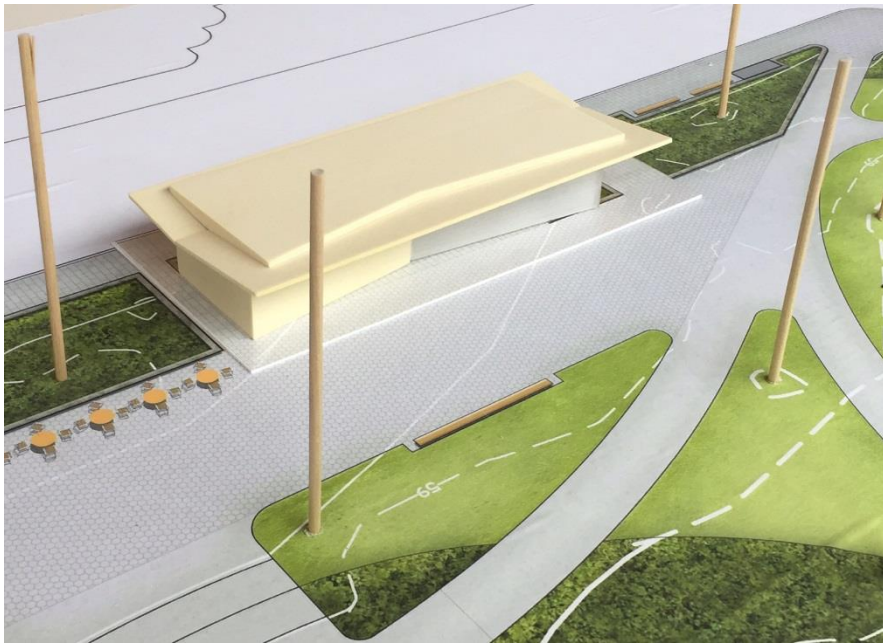
- Integrated Stormwater and Landscape
- Building is 4 Seasons, and Climate Responsive

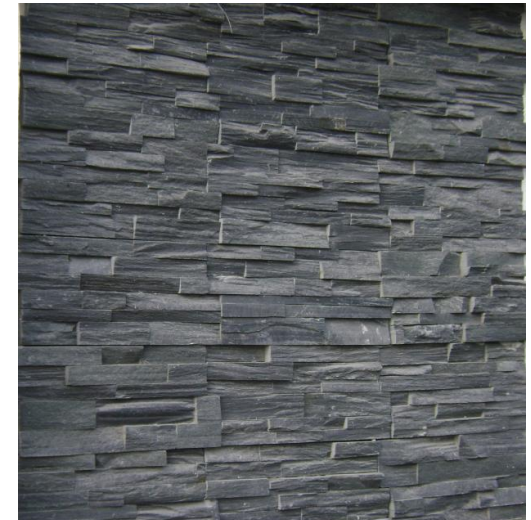
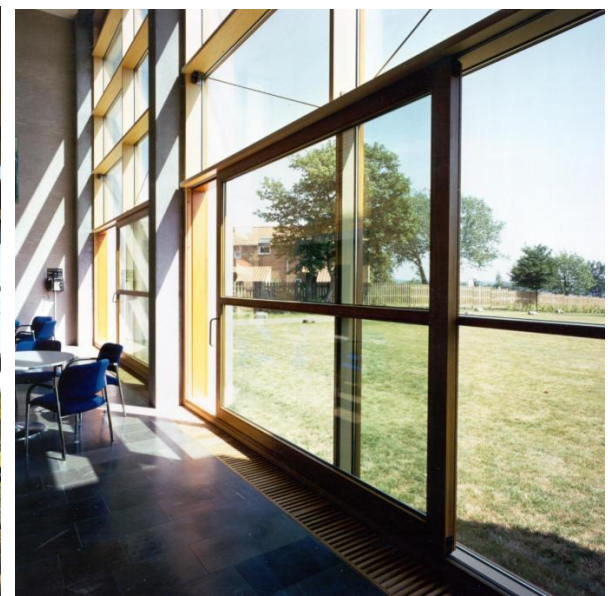














FRANKLIN PARK

VISION AND TRANSFORMATION PLAN