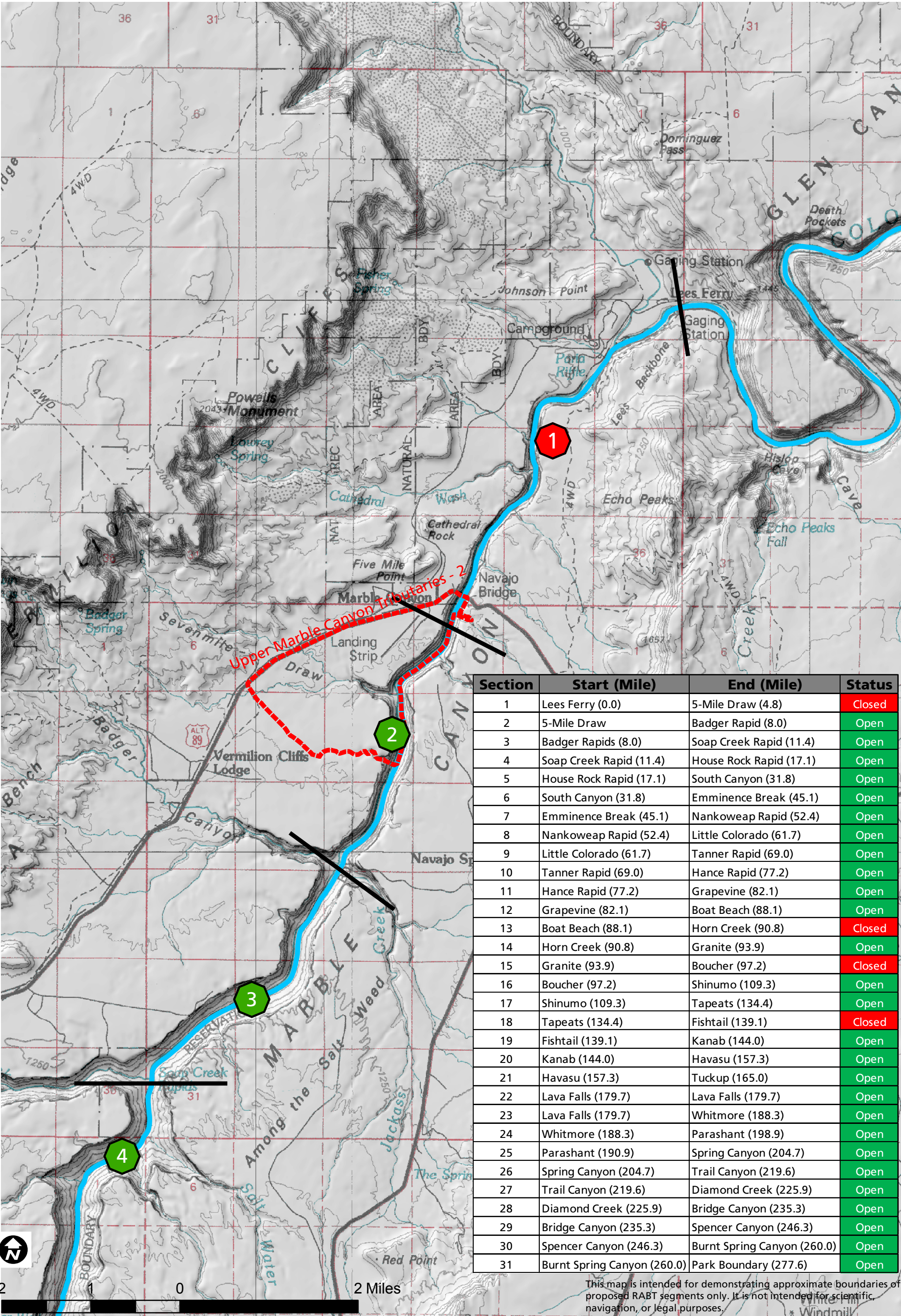




Alternative B RABT Segments

Map 1



Section	Start (Mile)	End (Mile)	Status
1	Lees Ferry (0.0)	5-Mile Draw (4.8)	Closed
2	5-Mile Draw	Badger Rapid (8.0)	Open
3	Badger Rapids (8.0)	Soap Creek Rapid (11.4)	Open
4	Soap Creek Rapid (11.4)	House Rock Rapid (17.1)	Open
5	House Rock Rapid (17.1)	South Canyon (31.8)	Open
6	South Canyon (31.8)	Emminence Break (45.1)	Open
7	Emminence Break (45.1)	Nankoweap Rapid (52.4)	Open
8	Nankoweap Rapid (52.4)	Little Colorado (61.7)	Open
9	Little Colorado (61.7)	Tanner Rapid (69.0)	Open
10	Tanner Rapid (69.0)	Hance Rapid (77.2)	Open
11	Hance Rapid (77.2)	Grapevine (82.1)	Open
12	Grapevine (82.1)	Boat Beach (88.1)	Open
13	Boat Beach (88.1)	Horn Creek (90.8)	Closed
14	Horn Creek (90.8)	Granite (93.9)	Open
15	Granite (93.9)	Boucher (97.2)	Closed
16	Boucher (97.2)	Shinumo (109.3)	Open
17	Shinumo (109.3)	Tapeats (134.4)	Open
18	Tapeats (134.4)	Fishtail (139.1)	Closed
19	Fishtail (139.1)	Kanab (144.0)	Open
20	Kanab (144.0)	Havasu (157.3)	Open
21	Havasu (157.3)	Tuckup (165.0)	Open
22	Lava Falls (179.7)	Lava Falls (179.7)	Open
23	Lava Falls (179.7)	Whitmore (188.3)	Open
24	Whitmore (188.3)	Parashant (198.9)	Open
25	Parashant (190.9)	Spring Canyon (204.7)	Open
26	Spring Canyon (204.7)	Trail Canyon (219.6)	Open
27	Trail Canyon (219.6)	Diamond Creek (225.9)	Open
28	Diamond Creek (225.9)	Bridge Canyon (235.3)	Open
29	Bridge Canyon (235.3)	Spencer Canyon (246.3)	Open
30	Spencer Canyon (246.3)	Burnt Spring Canyon (260.0)	Open
31	Burnt Spring Canyon (260.0)	Park Boundary (277.6)	Open

This map is intended for demonstrating approximate boundaries of proposed RABT segments only. It is not intended for scientific, navigation, or legal purposes.