



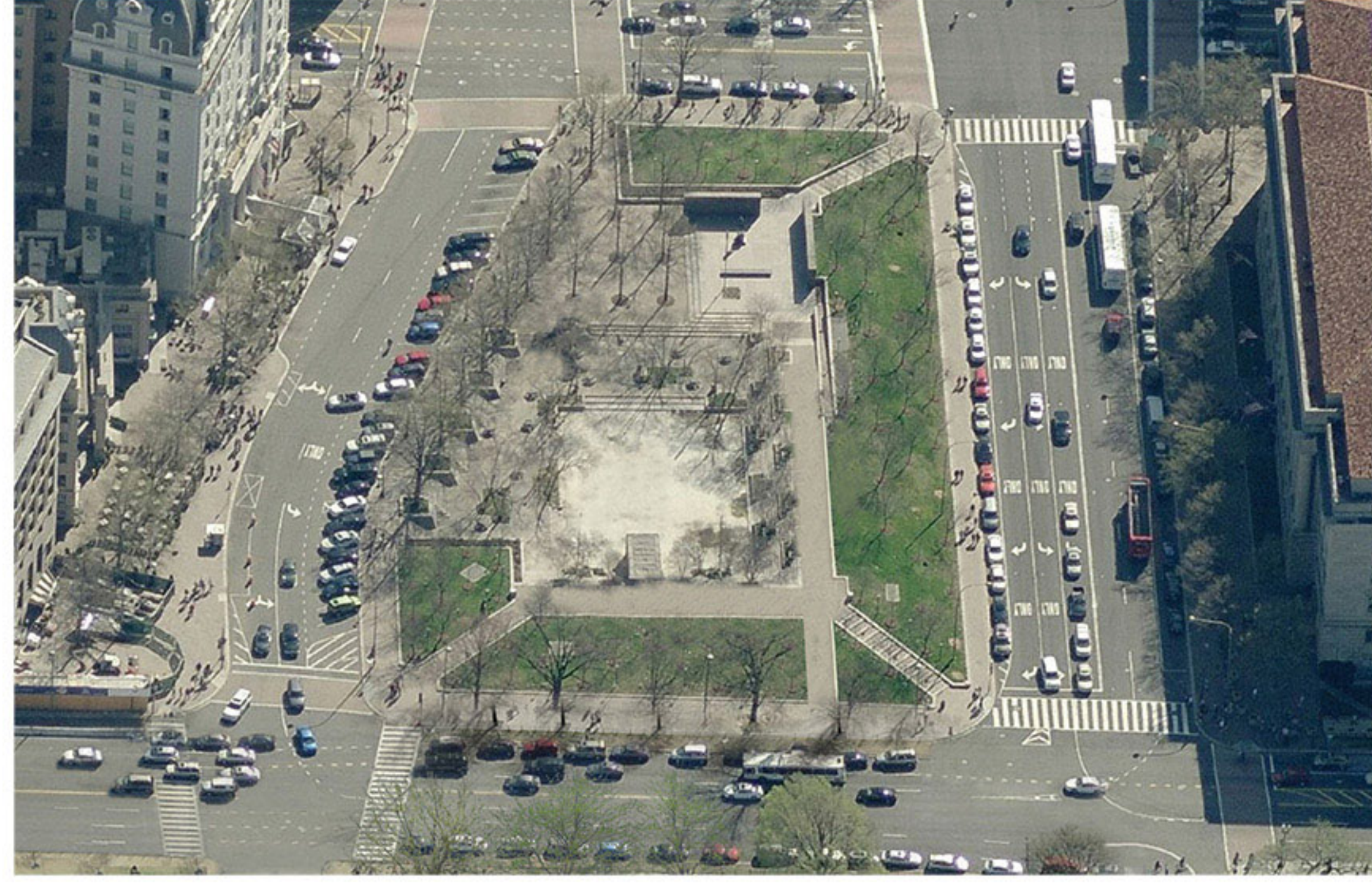
**The Weight of Sacrifice**

The fall sun settles on a soldier's etched features, enough to illuminate the small girl patting his horse. Above him 28 trees rise up from the earth flamed out in brazen red to mark the end of the Great War. He stands on the precipice of the battlefield, surveying the rising tide which has come to call his brothers from their havens of innocence. The figures before him emerge slowly, at first in low relief, and then pull further out of the morass as they cross the center of the wall. They all trudge onward, occasionally looking back at the life that was until they sink back in and down into the trenches.

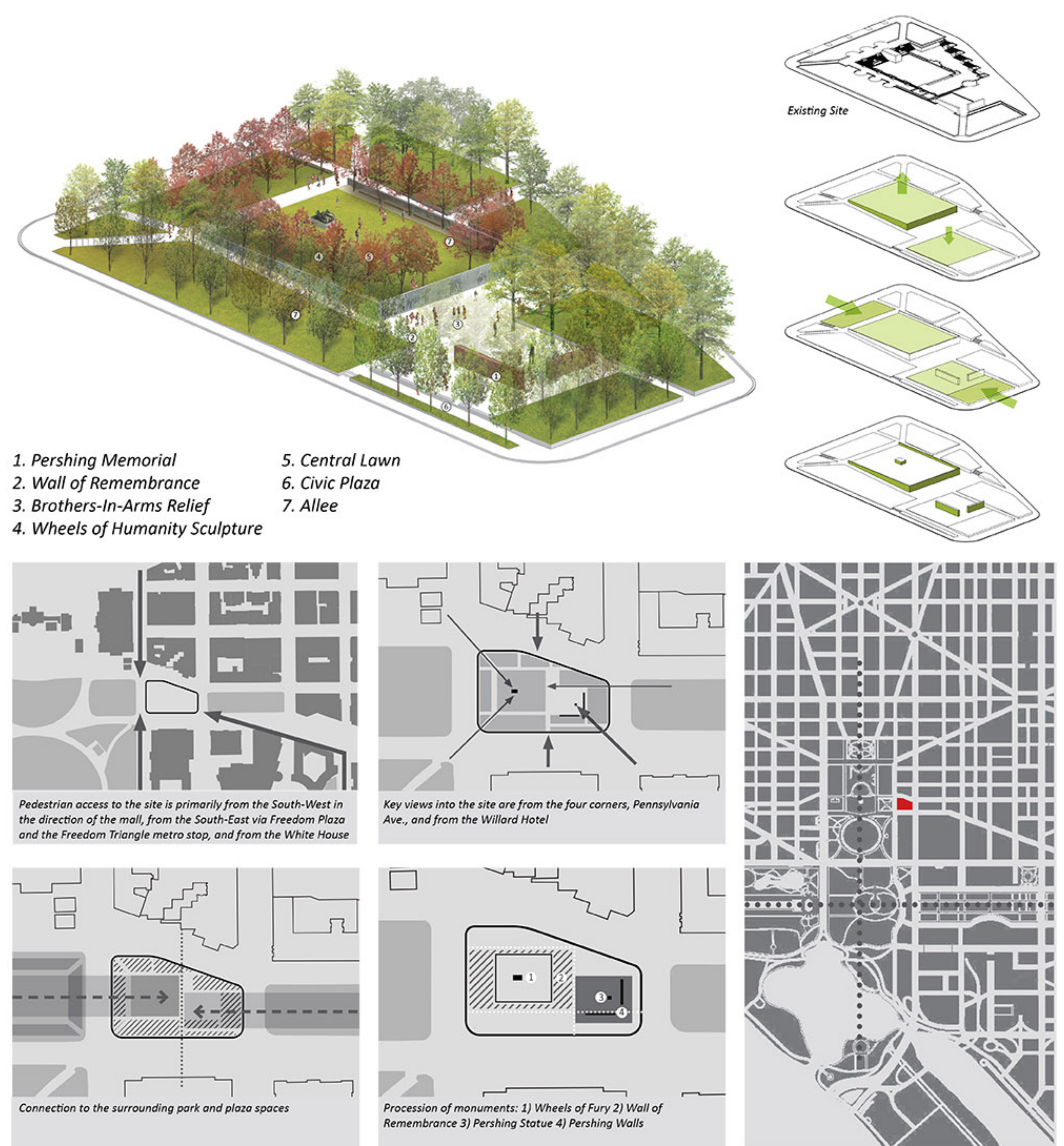
This is a moment frozen in time, captured in the darkened bronze form which has emerged from the soil to serve as a reminder of our actions. Along the North and South faces we see the emblazoned words of a generation gone by. 137 feet long, these walls gradually slip into the earth drawing their wisdom with them. Around the sculpted faces of the monument the remembrance unfolds. Each cubic foot of the memorial represents an American soldier lost in the war: 116,516 in all. Upon this unified mass spreads a verdant lawn. This is a space for freedom built upon the great weight of sacrifice.



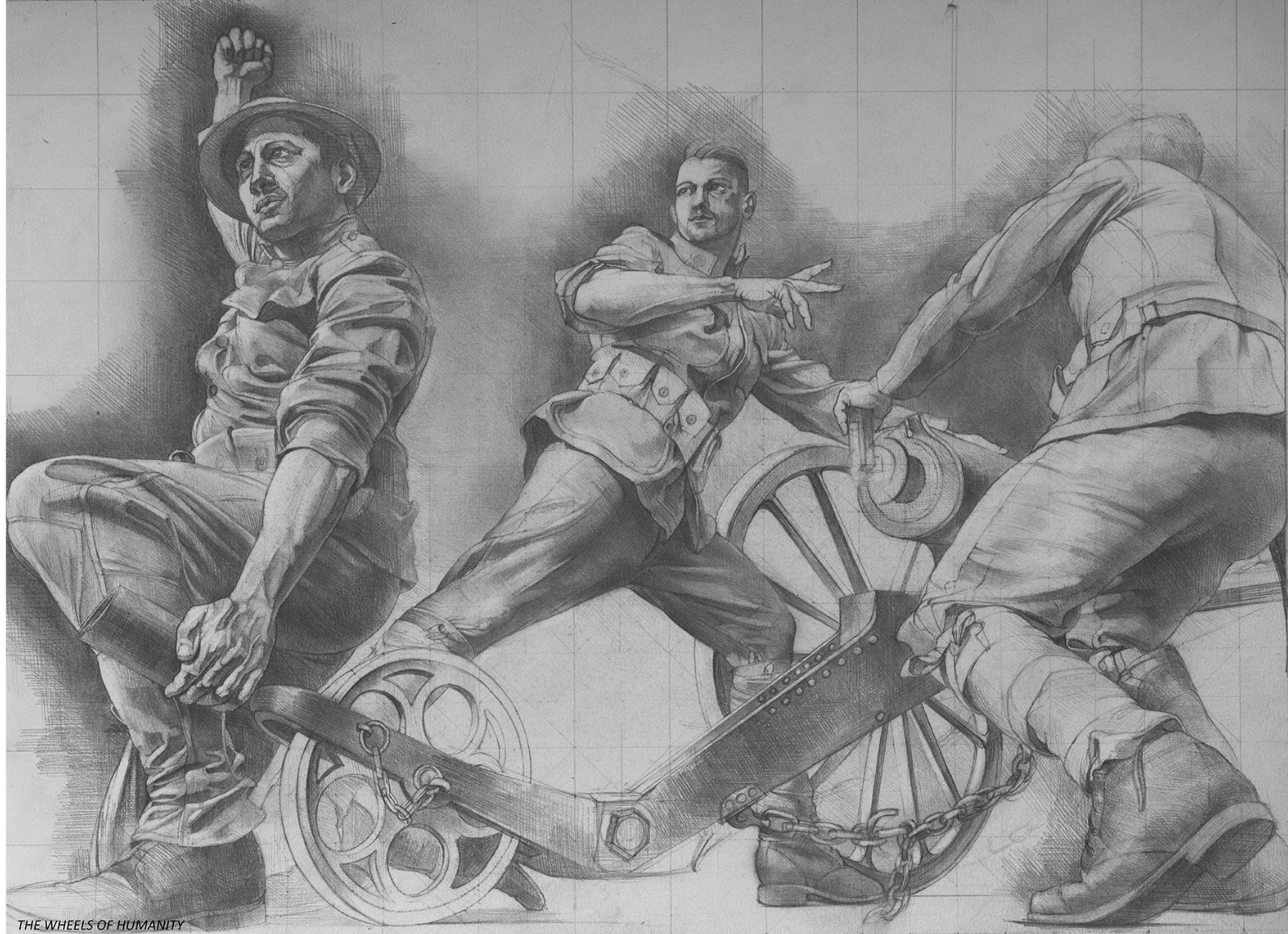
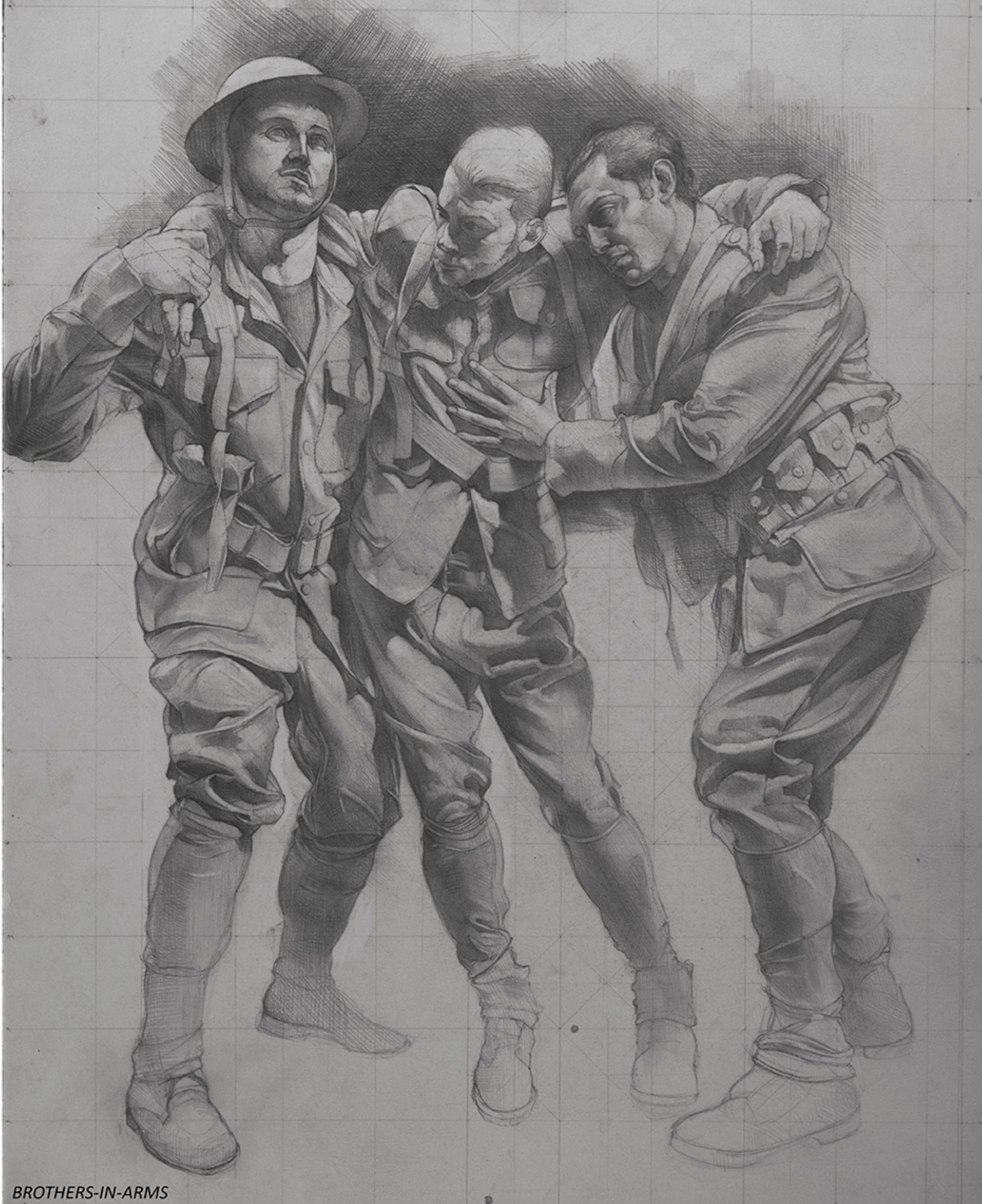
Existing Site











THE WALL OF REMEMBRANCE is a solemn tribute to the resilience of human bonds against the inexorable tide of war. The harmonious and processional beginning is opposed by the devastation of the composition on the right, swelling into forward-moving aggression with the charge into battle. One soldier poignantly looks back to the way things were, before the world consciousness was rearranged by the brutality of World War 1. The background landscape reflects the change, evolving from the innocent and celebratory troops surrounded by full-foliage trees to the ravaged scene of battlefield trenches stripped of any signs of life.

BROTHERS-IN-ARMS takes the focus as the central panel, representing redemption: the close and healing ties soldiers form as they face the horrors of battle together. The wounded soldier is lifted by his brother soldiers toward the future and the promise of healing.

THE WHEELS OF HUMANITY recreates the engine of war; gripped with the fury of battle, the soldiers forge ahead, but look backward for guidance.

These bronze panels, through their medium, stand for the timeless endeavor we face in the universal pursuit and right of freedom.

BROTHERS-IN-ARMS

THE WHEELS OF HUMANITY

WALL OF REMEMBRANCE



