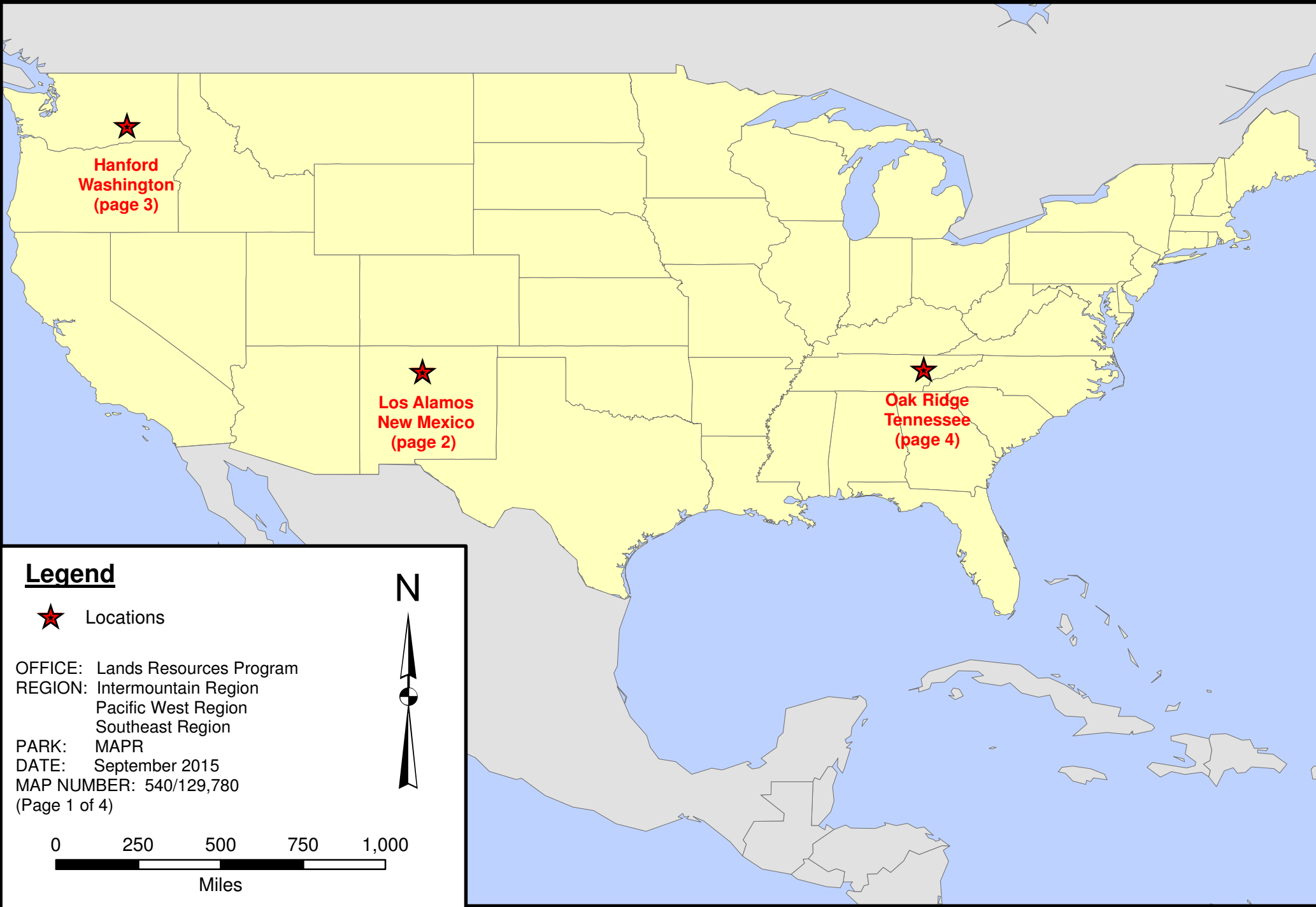


Department of Energy Sites within the Manhattan Project National Historical Park


National Park Service
U.S. Department of the Interior



Department of Energy Sites within the Manhattan Project National Historical Park (Los Alamos, New Mexico)

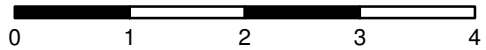


Legend




Department of Energy Sites within the Manhattan Project National Historical Park

OFFICE: Lands Resources Program
REGION: Intermountain Region
PARK: MAPR
DATE: September 2015
MAP NUMBER: 540/129,780
(Page 2 of 4)



0 1 2 3 4
Miles



N



Department of Energy Sites within the Manhattan Project National Historical Park (Hanford, Washington)

National Park Service
U.S. Department of the Interior

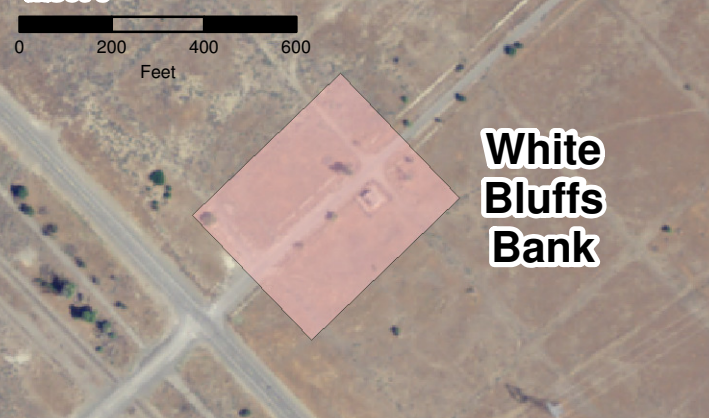


Inset 1



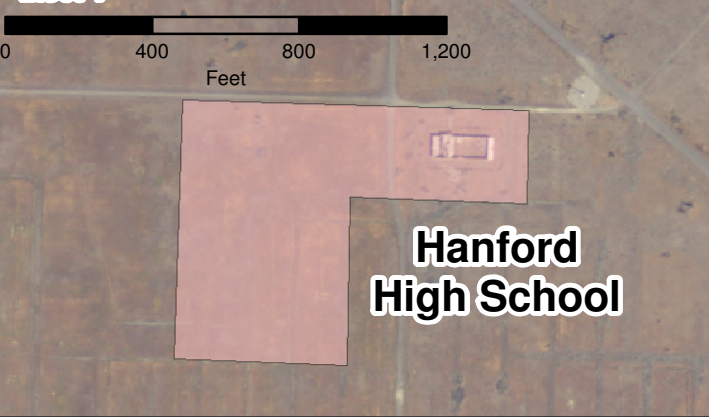
**Bruggemann's
Warehouse**

Inset 3



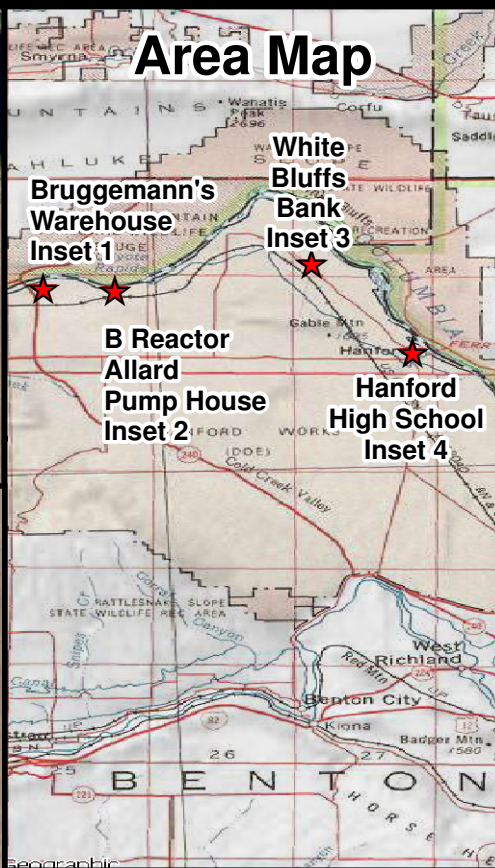
**White
Bluffs
Bank**

Inset 4




**Hanford
High School**

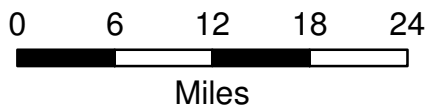
Area Map



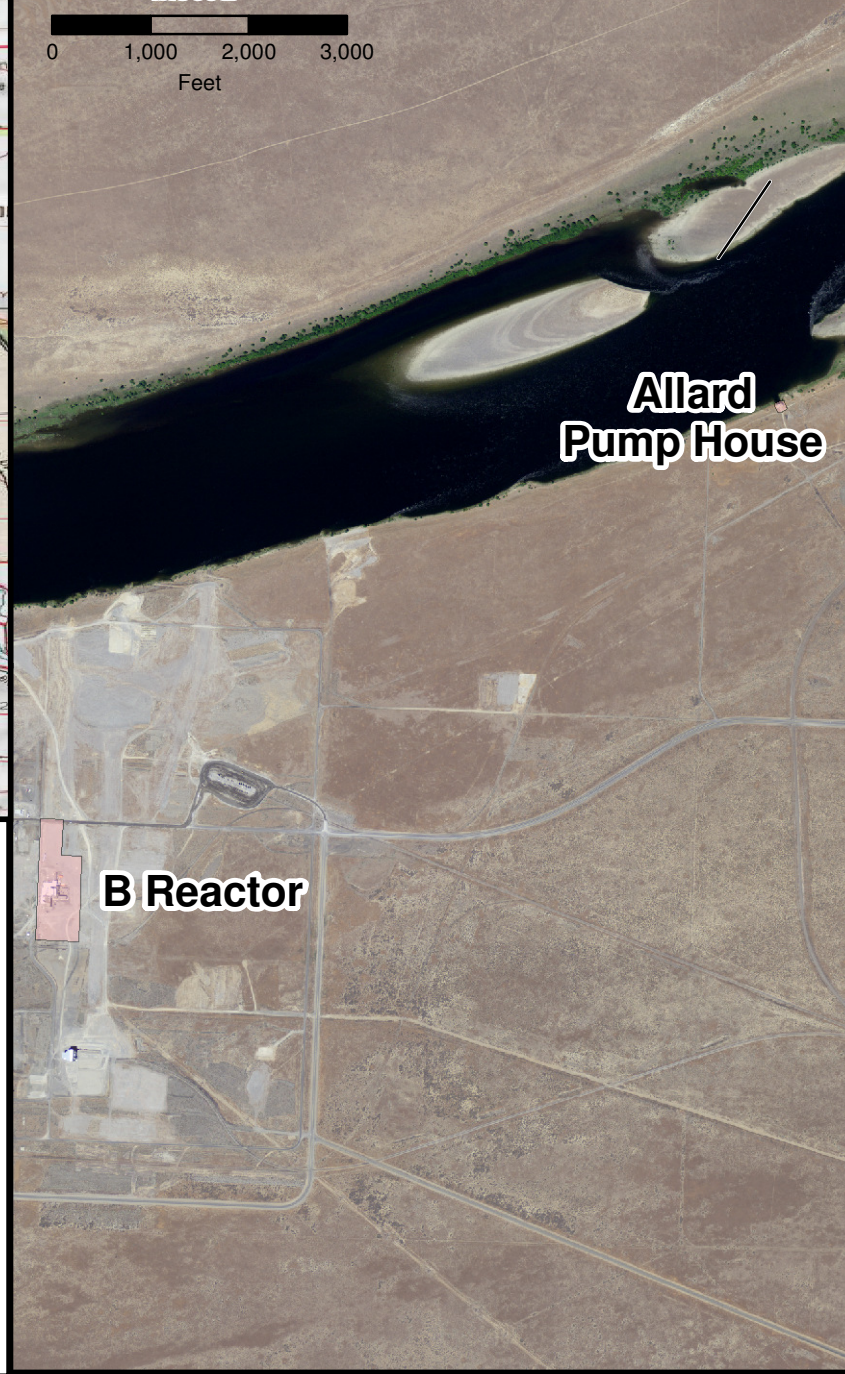
Legend

 Department of Energy
Sites within the
Manhattan Project
National Historical Park

OFFICE: Lands Resources Program
REGION: Pacific West Region
PARK: MAPR
DATE: September 2015
MAP NUMBER: 540/129,780
(Page 3 of 4)



Inset 2



**Allard
Pump House**


B Reactor

Department of Energy Sites within the Manhattan Project National Historical Park (Oak Ridge, Tennessee)

National Park Service
U.S. Department of the Interior



Legend

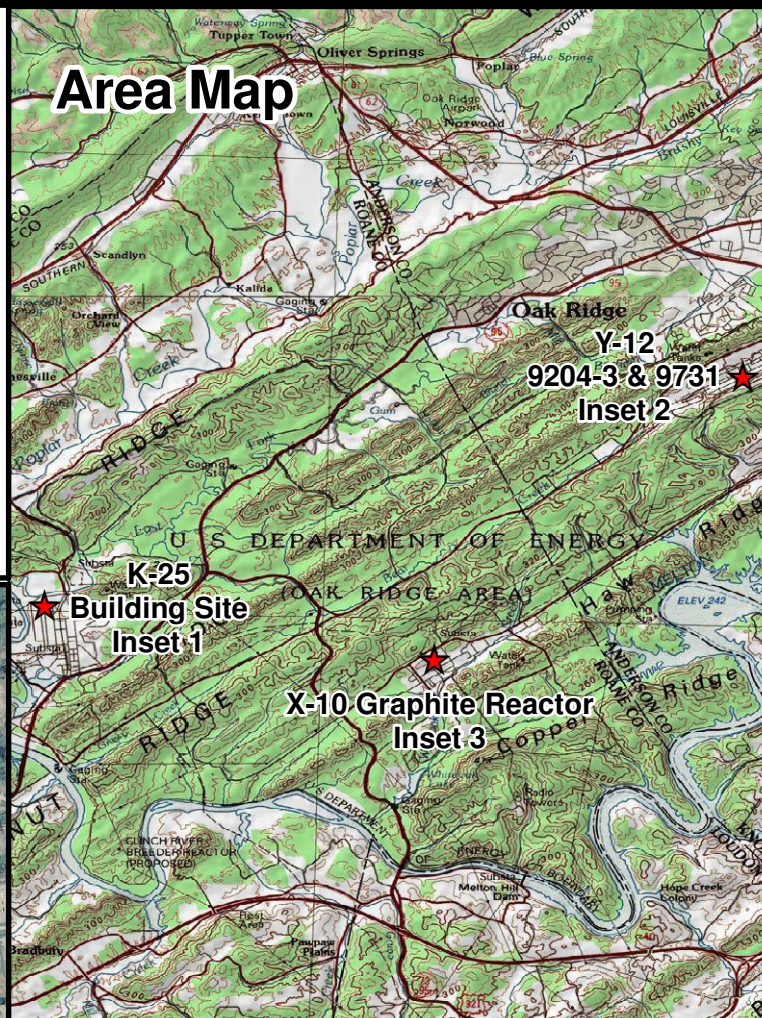
 Department of Energy
Sites within the
Manhattan Project
National Historical Park

OFFICE: Lands Resources Program
REGION: Southeast Region
PARK: MAPR
DATE: September 2015
MAP NUMBER: 540/129,780
(Page 4 of 4)



0 2 4 6 8
Miles

Area Map



Inset 1

K-25 Building Site



Inset 3

X-10 Graphite Reactor



Inset 2

Y-12 Building 9731

Y-12 Building 9204-3

